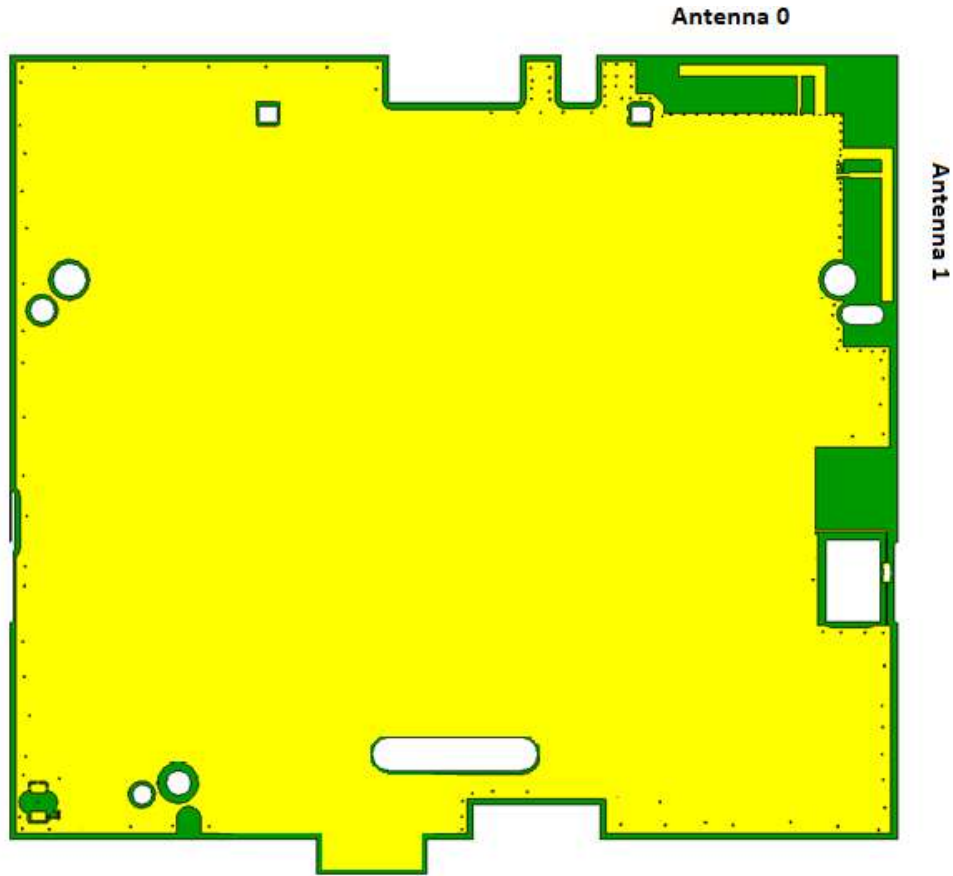


### Antenna Description

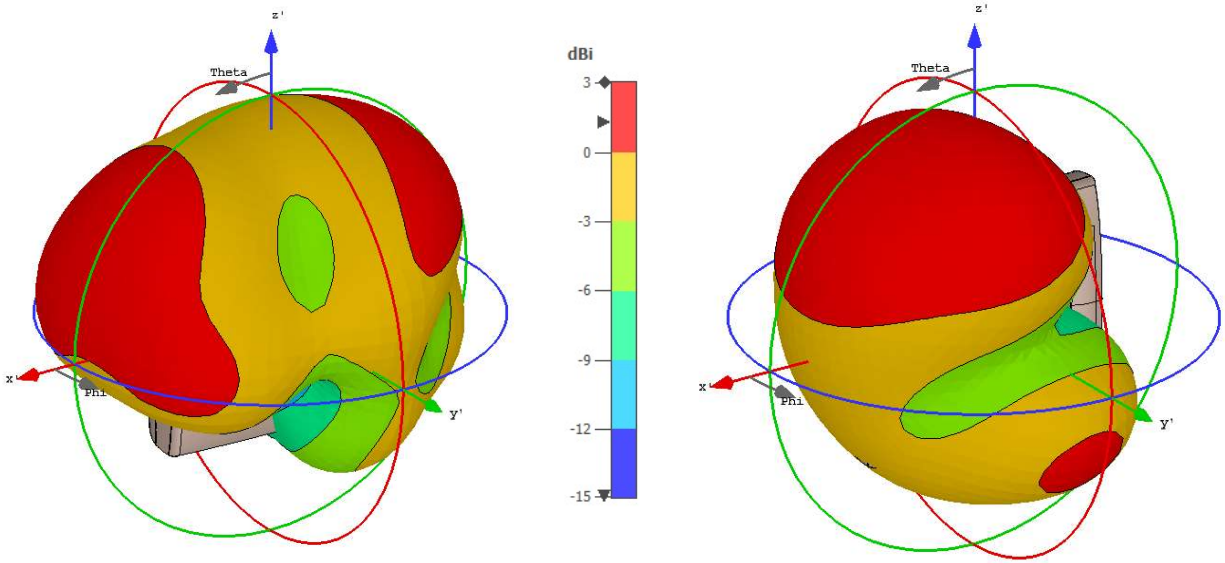
The product uses 2 antennas for diversity. Only one antenna used at any time (single stream). Both antennas are standard PIFA antennas etched on the PWB. Since the antennas are permanently attached PWB types, they meet the requirements of CFR 15.203.



The input impedance of both antennas is **50 Ω**. The efficiency of both antennas is the following:

Efficiency @ 2.44GHz	Antenna 0	Antenna 1
	-1.7dB 67.6%	-2.2dB 60.2%

## The Gain Patterns



Antenna 0 @ 2.44 GHz  
Efficiency = -1.7 dB  
Peak Gain = 1.3 dBi  
Mean Gain = -1.7 dBi

Antenna 1 @ 2.44 GHz  
Efficiency = -2.2 dB  
Peak Gain = 2.3 dBi  
Mean Gain = -2.2 dBi

