

FCC ID : HQXPC98317-03

PHOTO 9. EUT LABEL VIEW (MBK 520)



**MINUTEMAN**  
model:  
**MBK 520**

**INPUT**

AC 115V, 50/60Hz  
15A MAX

**OUTPUT**

AC 115V, 50/60Hz  
338W MAX

**SURGE OUT**

AC 115V, 50/60Hz  
1200W MAX

**FCC ID:**  
HQXPC98317-03

This device complies with part 15 of the FCC Rules. Operation is subject to the following two conditions: (1) This device must not cause harmful interference, and (2) this device must accept any interference received, including interference that may cause undesired operation.

P/N : 90000251  
S/N : AC05  
880201793

Backup

Surge only



ECC ID : HOXPC98317-03

PHOTO 7. EUT FRONT VIEW (MBK 520)



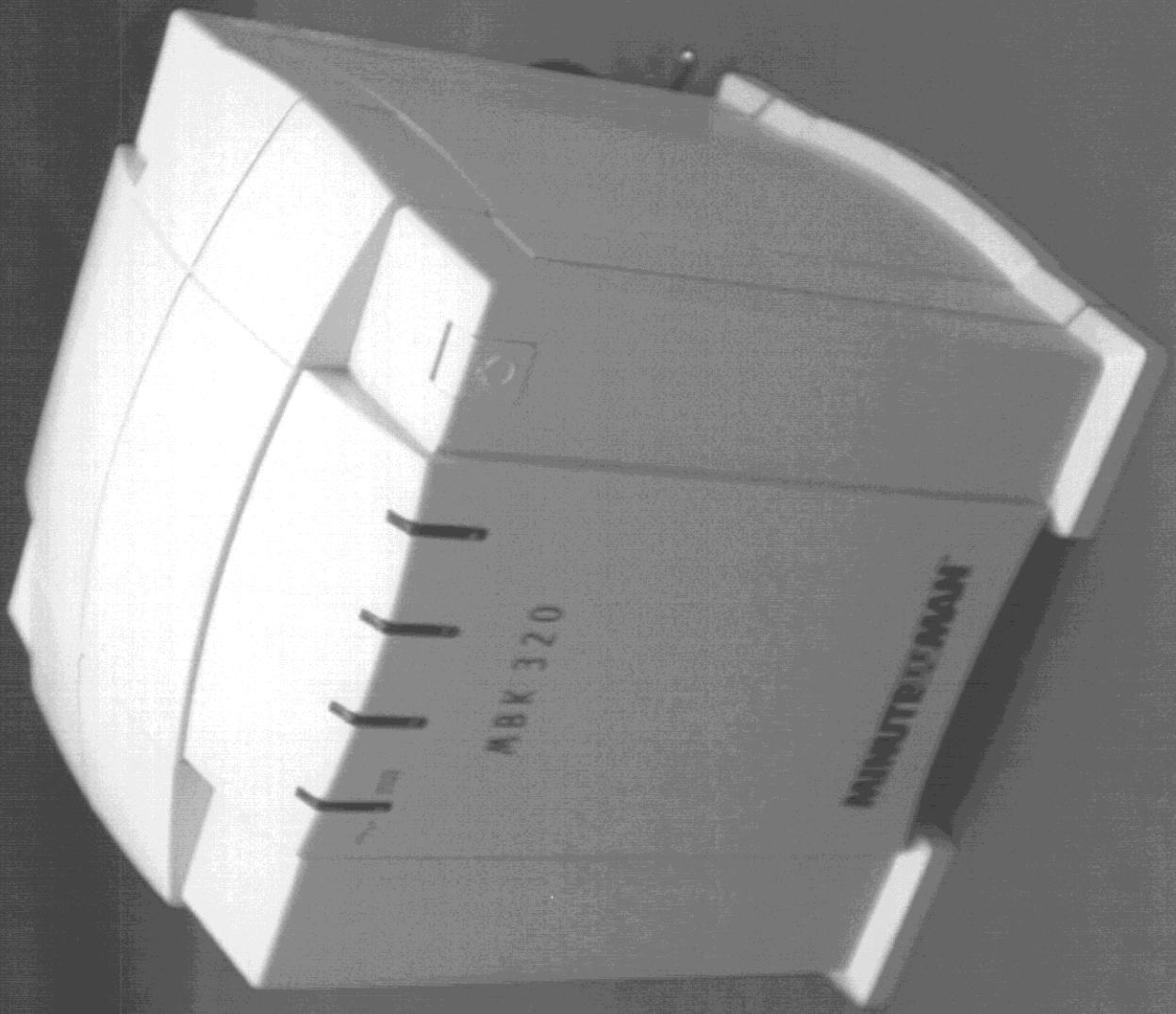
FCC ID : HOXPC98317-03

PHOTO 8. EUT REAR VIEW (MBK 520)



FCC ID: HOXPC98317-03

PHOTO 1. EUT FRONT VIEW (MBK 320)



FCC ID : HOXPC98317-03  
PHOTO 2. EUT REAR VIEW (MBK 320)



FCC ID : HQXPC98317-03

PHOTO 3. EUT LABEL VIEW (MBK 320)

**MINUTEMAN**  
model:  
**MBK 320**

**INPUT**

AC 115V, 50/60Hz  
15A MAX

**OUTPUT**

AC 115V, 50/60Hz  
208W MAX

**SURGE OUT**

AC 115V, 50/60Hz  
1200W MAX

**FCC ID:**  
**HQXPC98317-03**

This device complies with Part 15 of the FCC Rules. Operation is subject to the following two conditions: (1) This device may not cause harmful interference, and (2) this device must accept any interference that may be received, including interference that may cause undesired operation.

P/N : 90000250

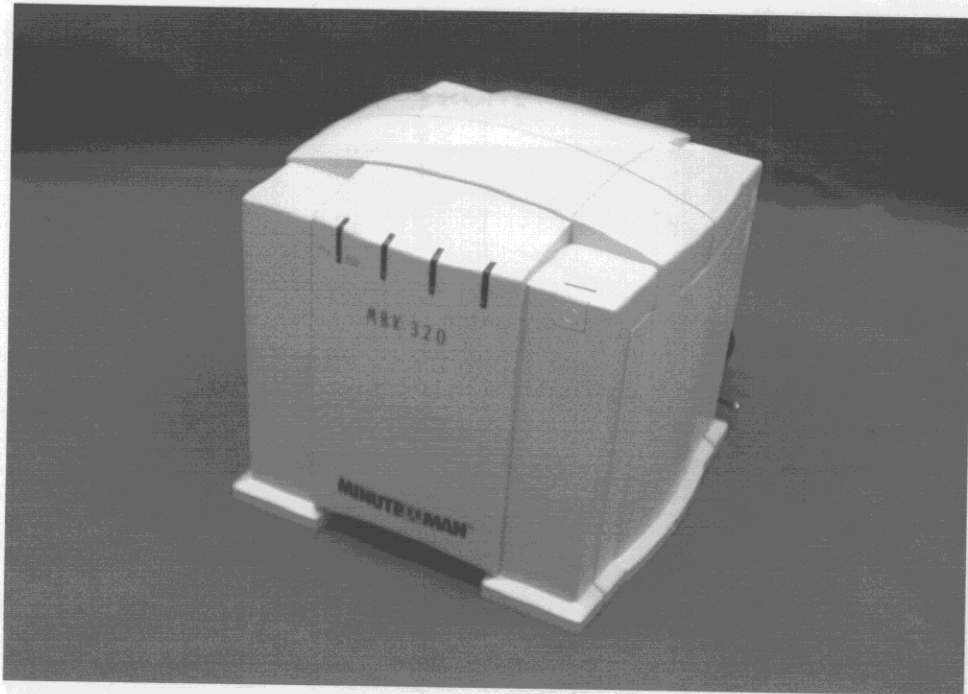
S/N : AC04

880200473

Surge only



APPENDIX A.  
PHOTOS OF EUT APPEARANCE  
MODEL NO. : MBK 320  
< EUT FRONT VIEW >

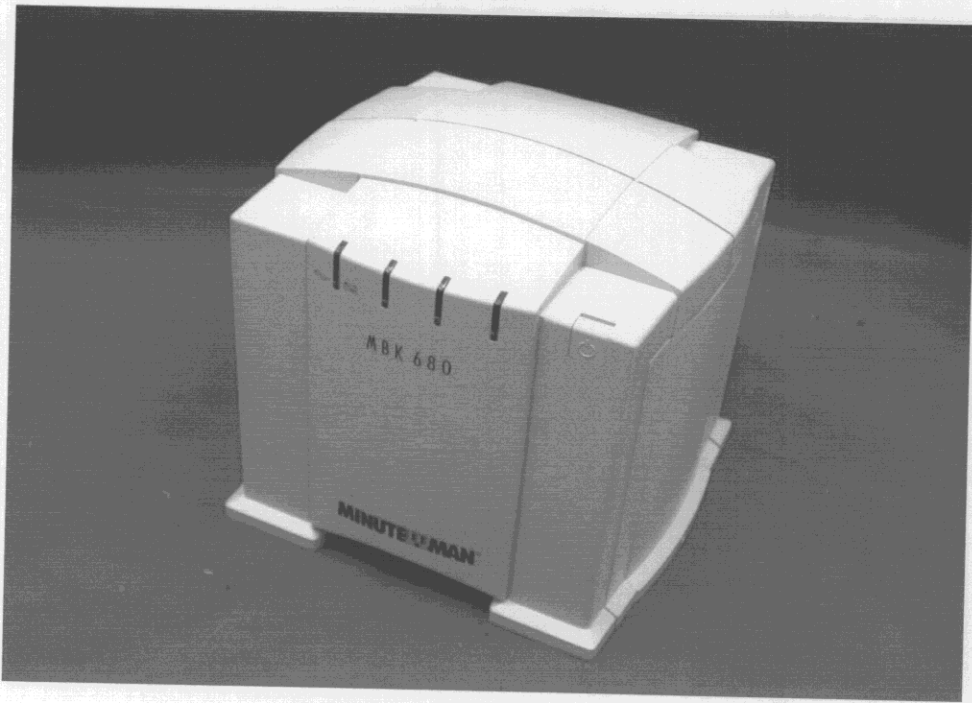


< EUT REAR VIEW >



**MODEL NO. : MBK 680**

**< EUT FRONT VIEW >**



**< EUT REAR VIEW >**





FCC ID : HOXPC98317-03

PHOTO 13. EUT FRONT VIEW (MBK 680)



FCC ID : HQXPC98317-03  
PHOTO 14. EUT REAR VIEW (MBK 680)



FCC ID : HQXPC98317-03  
PHOTO 15. EUT LABEL VIEW (MBK 680)

**MINUTEMAN**  
model:  
**MBK 680**

**INPUT**

AC 115V, 50/60Hz  
15A MAX

**OUTPUT**

AC 115V, 50/60Hz  
442W MAX

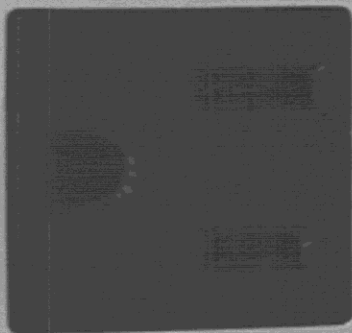
**SURGE OUT**

AC 115V, 50/60Hz  
1200W MAX

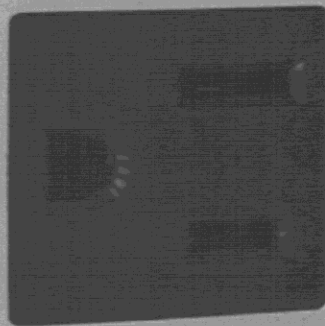
**FCC ID:**  
**HQXPC98317-03**

This device complies with Part 15 of the FCC Rules. Operation is subject to the following two conditions: (1) This device may not cause interference, and (2) this device must accept any interference received, including interference that may cause undesired operation.

P/N : 90000252  
S/N : AC06  
870900968



↑  
/ backup



Surge only

