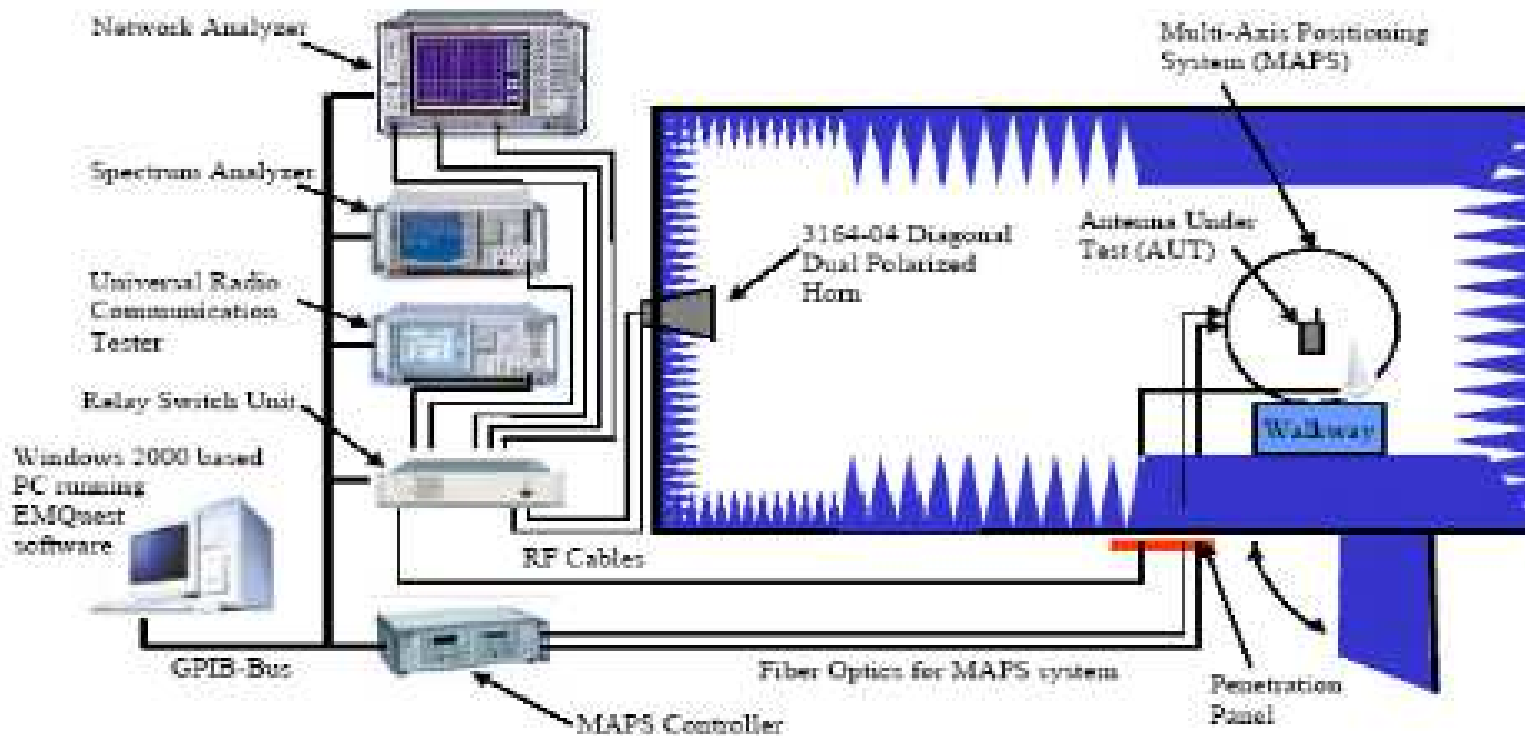


External TPMS BSE02 Antenna Test Report

2015.9.10

CW Cheng

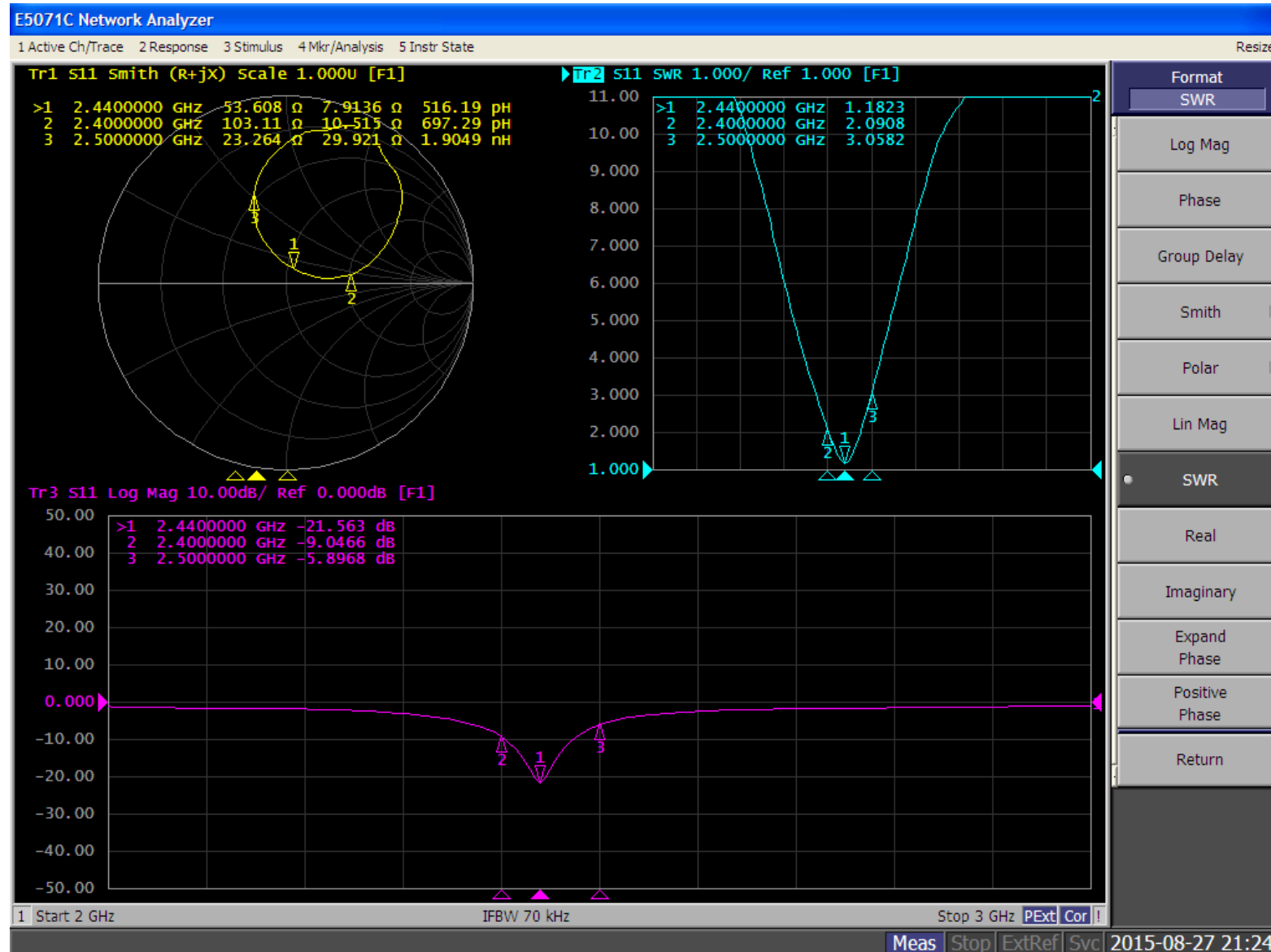
Typical AMS-8500 System Schematic



Laboratory Equipment

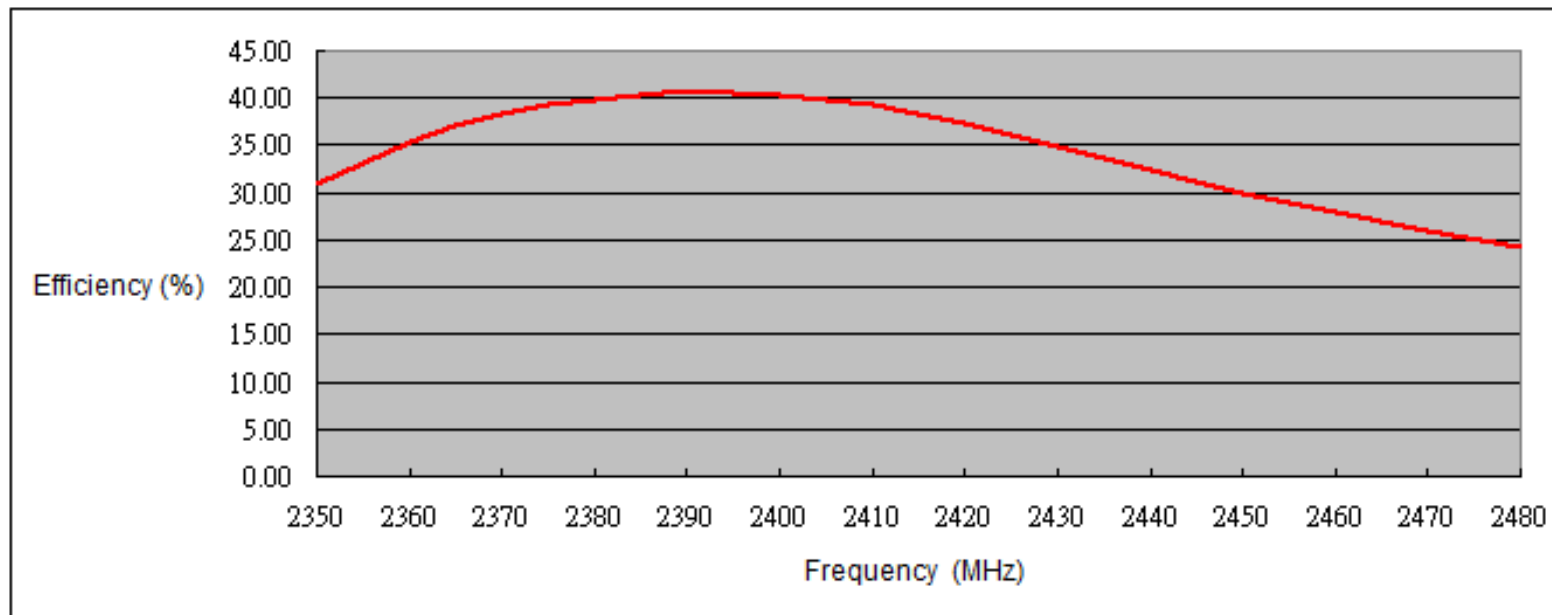


S11 - Sample 1

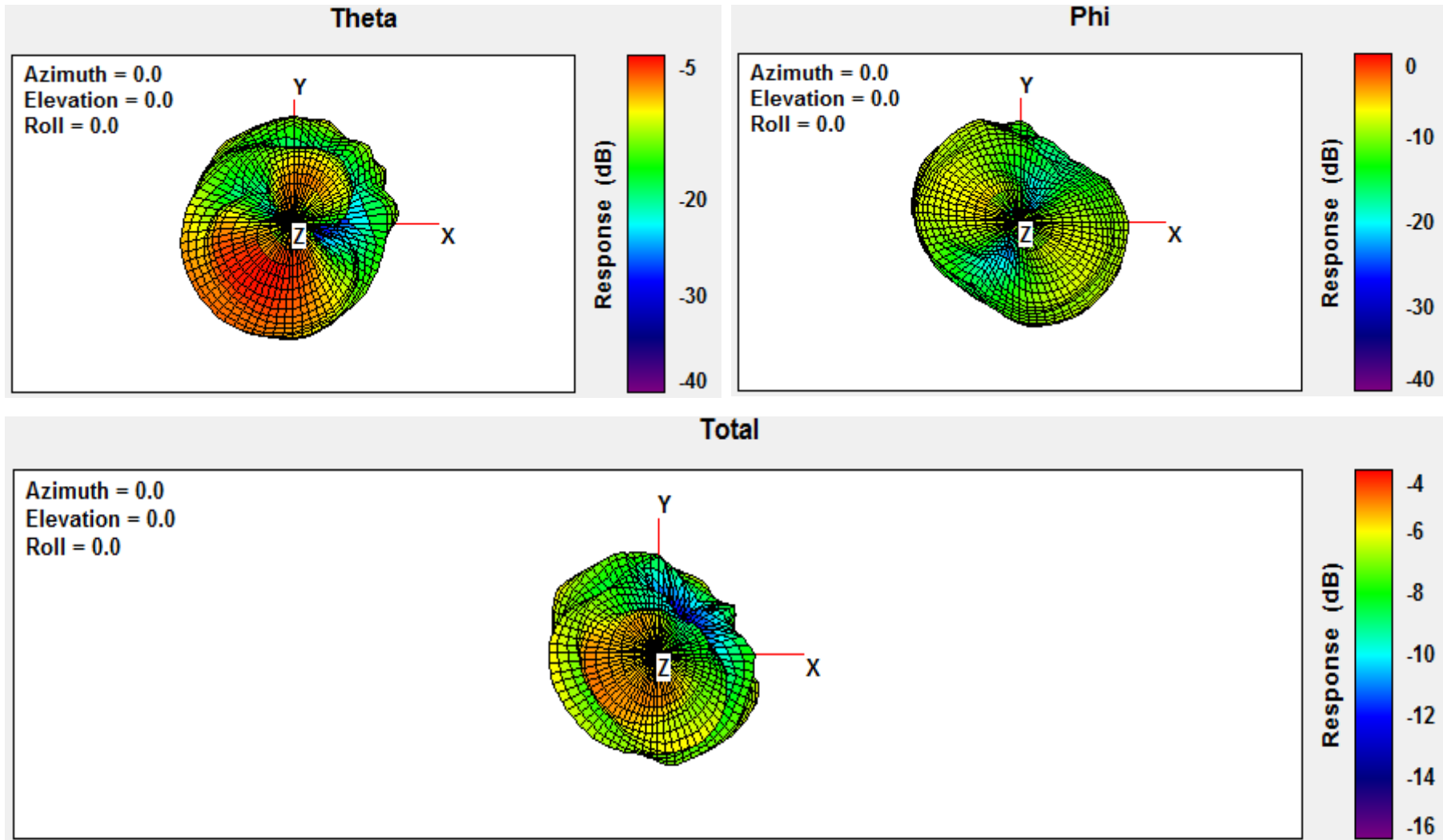


Antenna Efficiency (Sample 1)

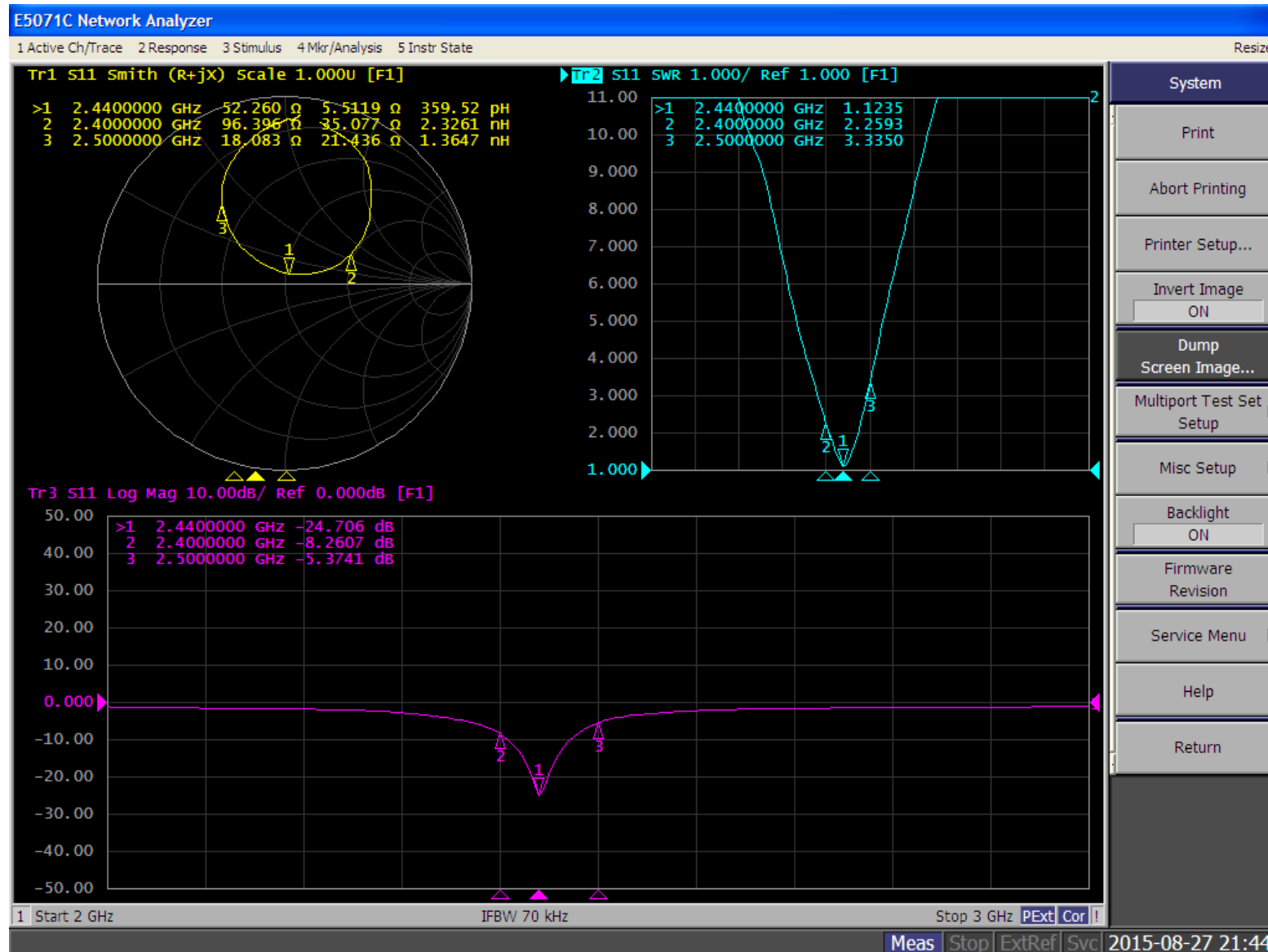
Frequency (MHz)	2350	2360	2370	2380	2390	2400	2410	2420	2430	2440	2450	2460	2470	2480
Tot. Rad. Pwr. (dBm)	-5.11	-4.51	-4.17	-4.00	-3.89	-3.94	-4.05	-4.29	-4.58	-4.90	-5.24	-5.54	-5.85	-6.17
Gain (dBi)	-1.42	-0.83	-0.51	-0.45	-0.42	-0.52	-0.68	-0.91	-1.16	-1.48	-1.83	-2.26	-2.61	-2.97
Efficiency (%)	30.83	35.44	38.30	39.83	40.84	40.37	39.35	37.25	34.81	32.38	29.93	27.93	26.02	24.17
Average Efficiency (%)	34.10													



Radiation pattern (Sample 1)

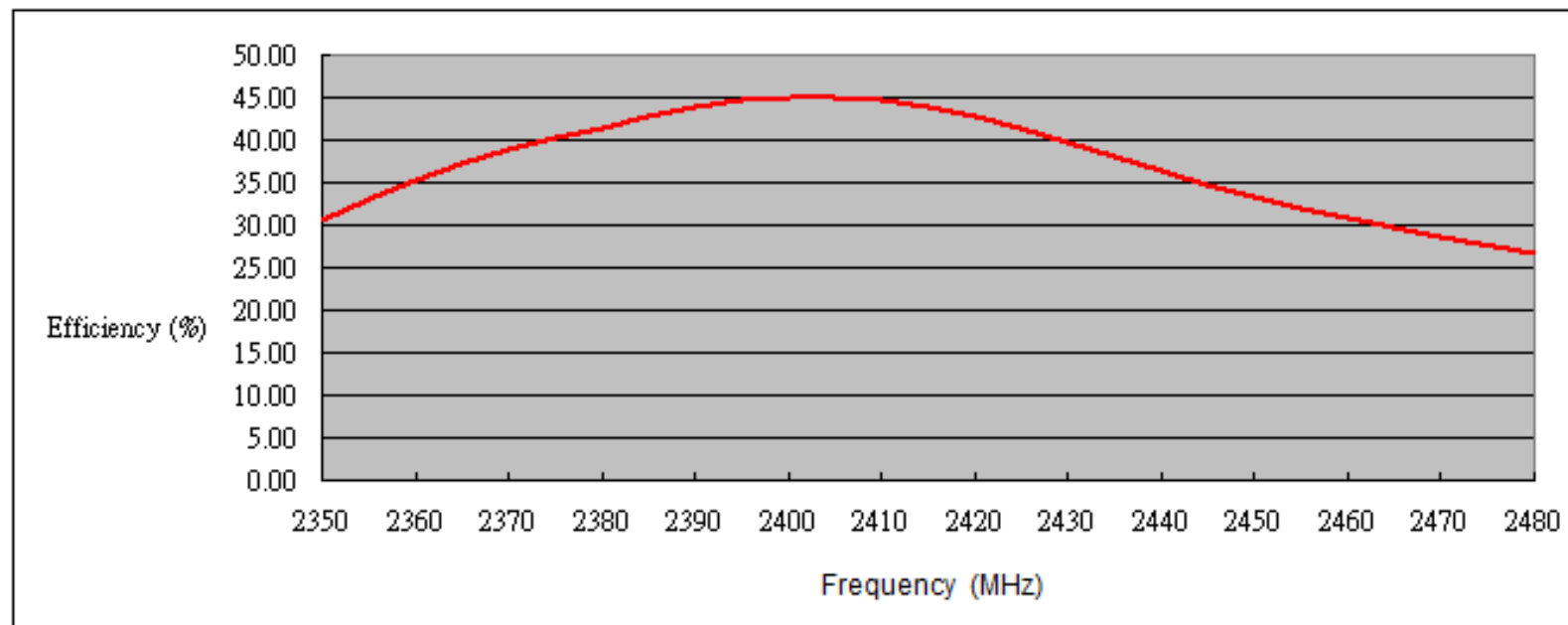


S11 - Sample 2



Antenna Efficiency (Sample 2)

Frequency (MHz)	2350	2360	2370	2380	2390	2400	2410	2420	2430	2440	2450	2460	2470	2480
Tot. Rad. Pwr. (dBm)	-5.17	-4.53	-4.10	-3.82	-3.58	-3.47	-3.49	-3.70	-4.02	-4.40	-4.79	-5.11	-5.46	-5.75
Gain (dBi)	-1.63	-1.09	-0.83	-0.71	-0.54	-0.46	-0.42	-0.67	-1.07	-1.58	-2.06	-2.43	-2.76	-3.05
Efficiency (%)	30.44	35.23	38.87	41.45	43.88	44.96	44.77	42.67	39.59	36.33	33.22	30.84	28.47	26.58
Average Efficiency (%)	36.95													



Radiation pattern (Sample 2)

