



Medical Imaging *RDE*

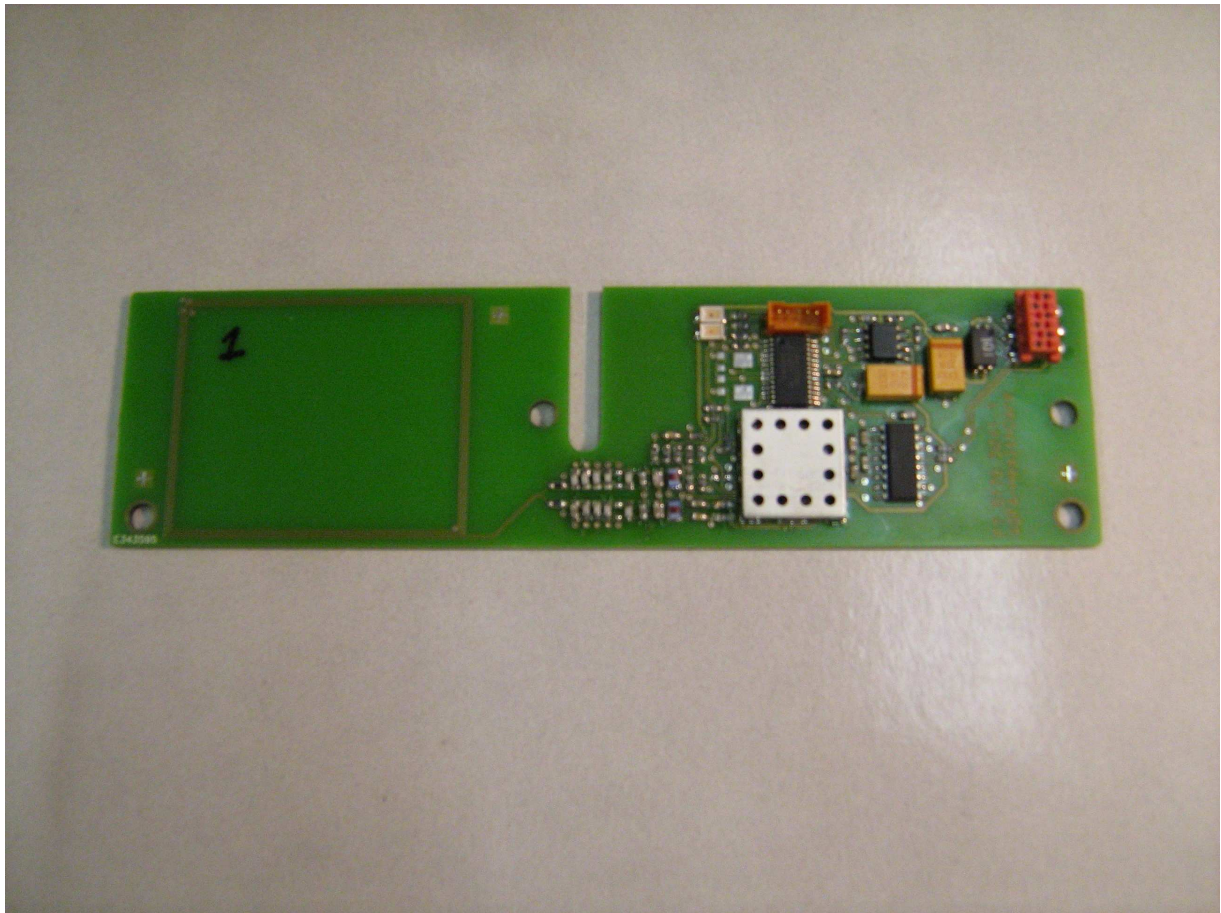
From: [Jan Vercammen \(6233\) – MI/TSP-HW/Electronics](#)

Date: April 21, 2011

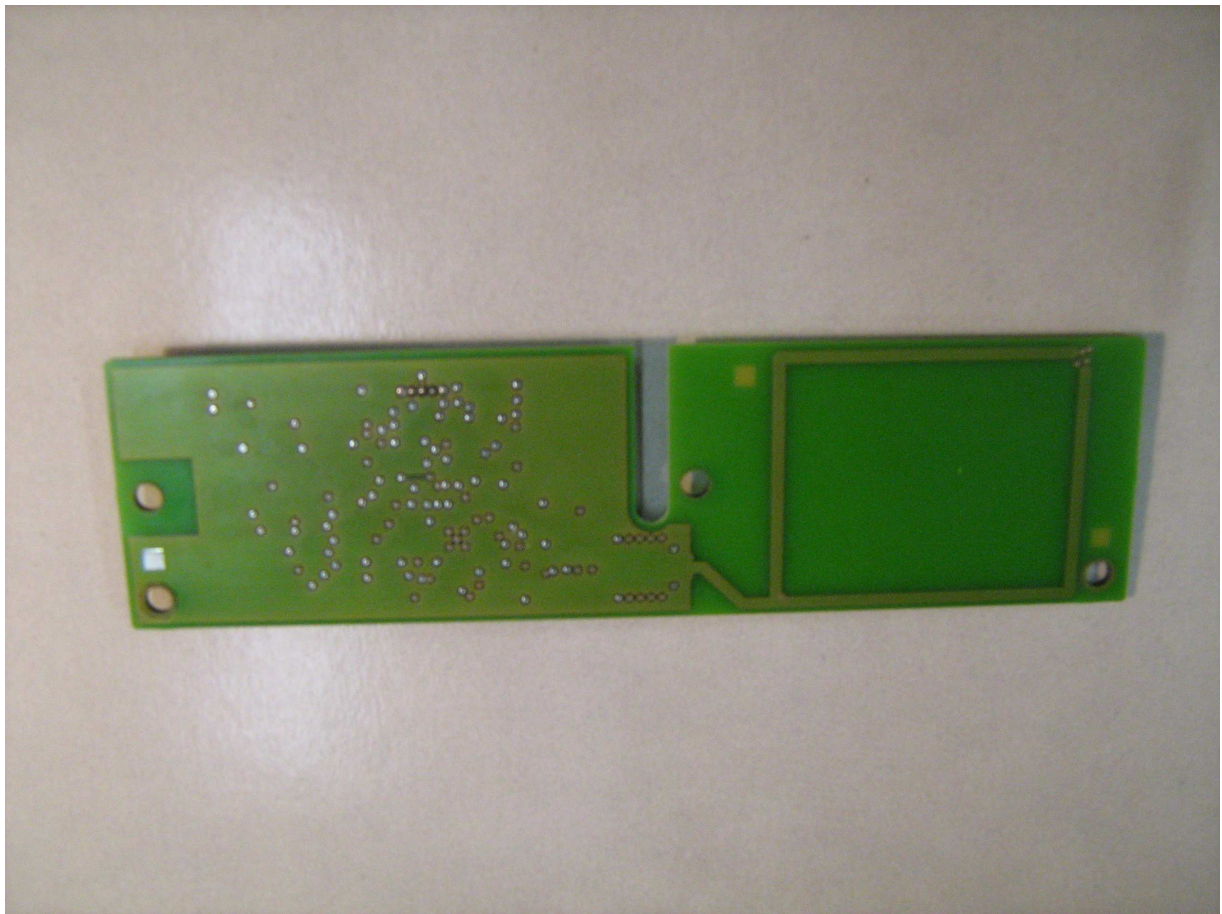
Concerning: Photo's Cirrus RFID reader (FCC ID: HPL5243)

Overview of photo session :

1. page 1: RFID tag reader PCB top assembly
2. page 2: RFID tag reader PCB bottom assembly



AGFA 
Medical Imaging *RDE*



END of Document