



Medical Imaging *RDE*

From: [Jan Vercammen \(6233\) – R&D Mortsel/Electronics](#)

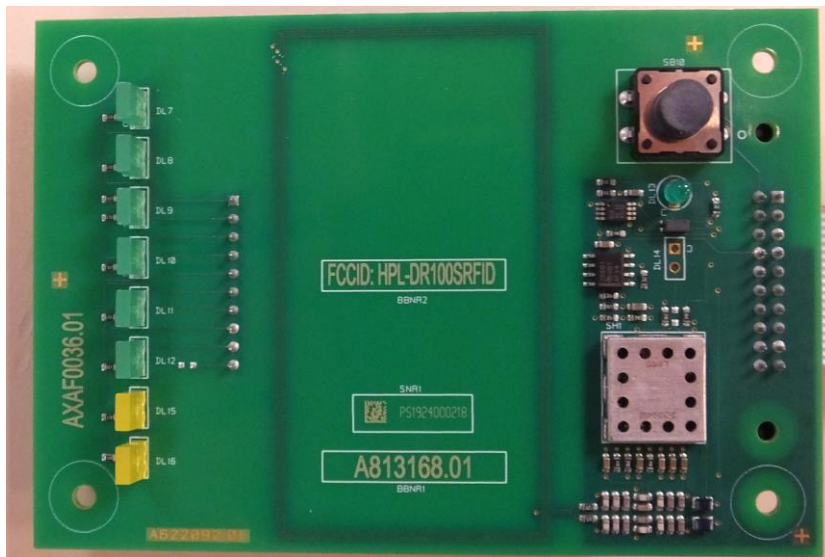
Date: July 10, 2019

Concerning: Location of FCC ID and part number (FCC ID: HPL-DR100SRFID)

The RFID tag reader is a small printed circuit board. It has three labels (bottom to top):

1. Part number label A813168.X, where the digit after the dot is the revision code index. The last index is 02 and is due to PCB assembly corrections (connector via solder fill improvement). The board index on the photo is 01, which is equivalent to index 02.
2. Board assembly serial number, the exact format of the serial number is dependent on the printed circuit board assembly manufacturer.
3. FCC ID identification: the text is FCC ID: HPL-DR100SRFID. A printed label or laser marked representation are possible. The example shown in the photograph could differ from production PCB.

Note: The exact font and size of the characters of all three will differ from the photograph taken. The FCC ID can be read with the naked eye, without the use of a magnifying device.



The host application will have an external, visible and permanent label that will contain the text:
"Contains FCC ID: HPL-RD100SRFID"

END of Document