

Intermec Technologies Corporation
6001 36th Avenue West
Everett, WA 98203-9280

425.356.1765 tel
425.348.2633 fax
www.intermec.com

December 5, 2002

Greg Kiemel
Director of Engineering
NW-EMC Laboratories Inc.

Dear Greg,

The compliance of the antenna system of our Model WA21 and WA22 Access Points with the integral antenna requirement of FCC Part 15.407 is achieved in two steps.

The first step is the antenna radom's fixed connection to the product enclosure. As you can see in the attached drawing the antenna base is screwed to the enclosure of the Access Point with a nut holding it from the inside. The only way the antenna base can be loosened is by opening up the Access Point, which would void the warranty and the users are clearly warned against that.

The second step is the connection of the antenna cable to the transmitter. The antenna cable is connected to the transmitter (even when the antenna base is loosened) through a Radiall custom connector, which can only be removed by the use of a custom designed insertion tool available to antenna manufacturers only. Any other attempt of removing the antenna results in destruction of the connector rendering the transmitter useless.

These facts are indicated in the attached radio replacement document prepared for Intermec Service employees. The users are only told, that they cannot open the products. Please let me know, if there are any other questions.

Sincerely,

Carl K. Turk, MSEE
Sr. EMC Engineer
Intermec Technologies, Corp.



7

6

5

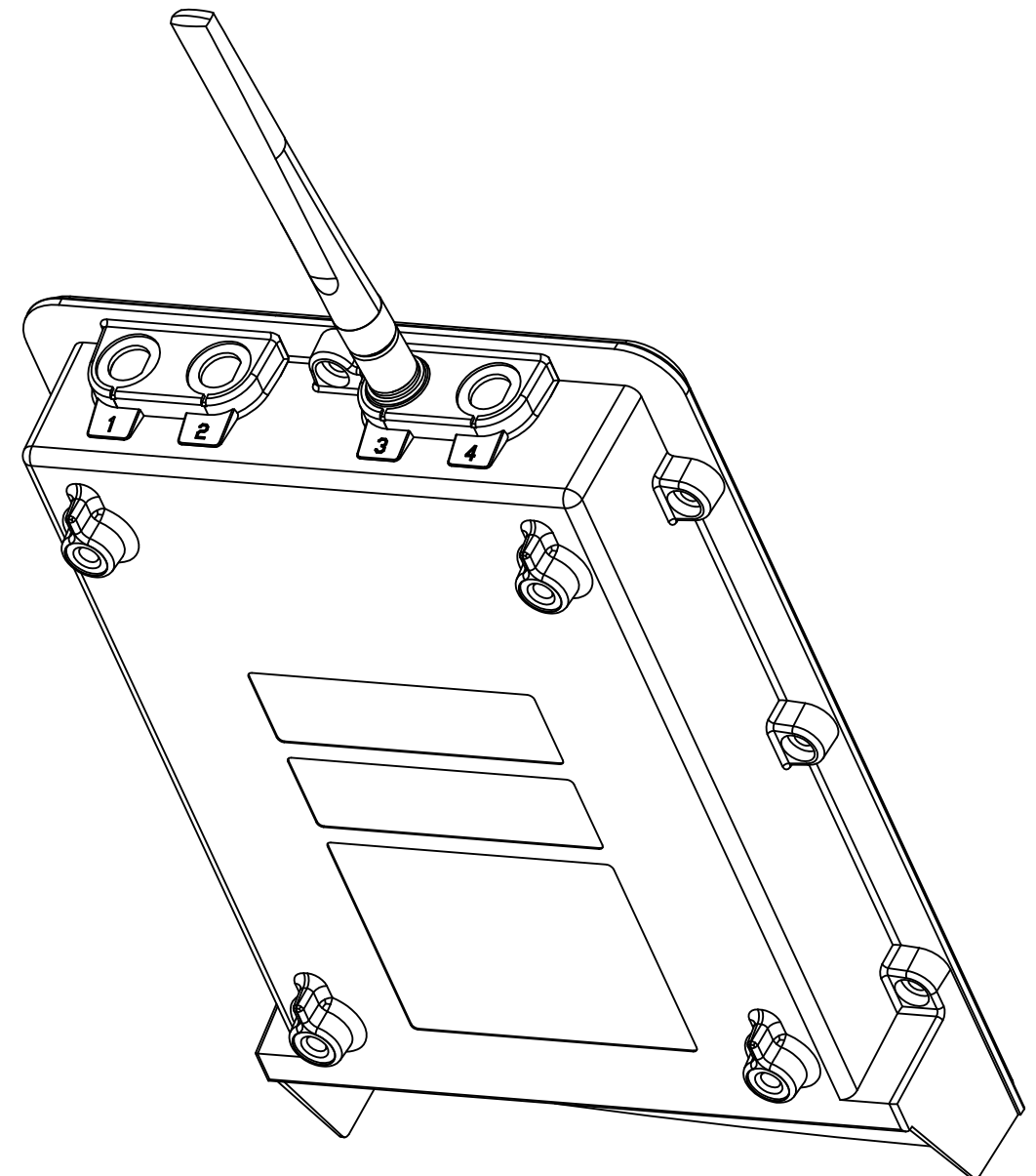
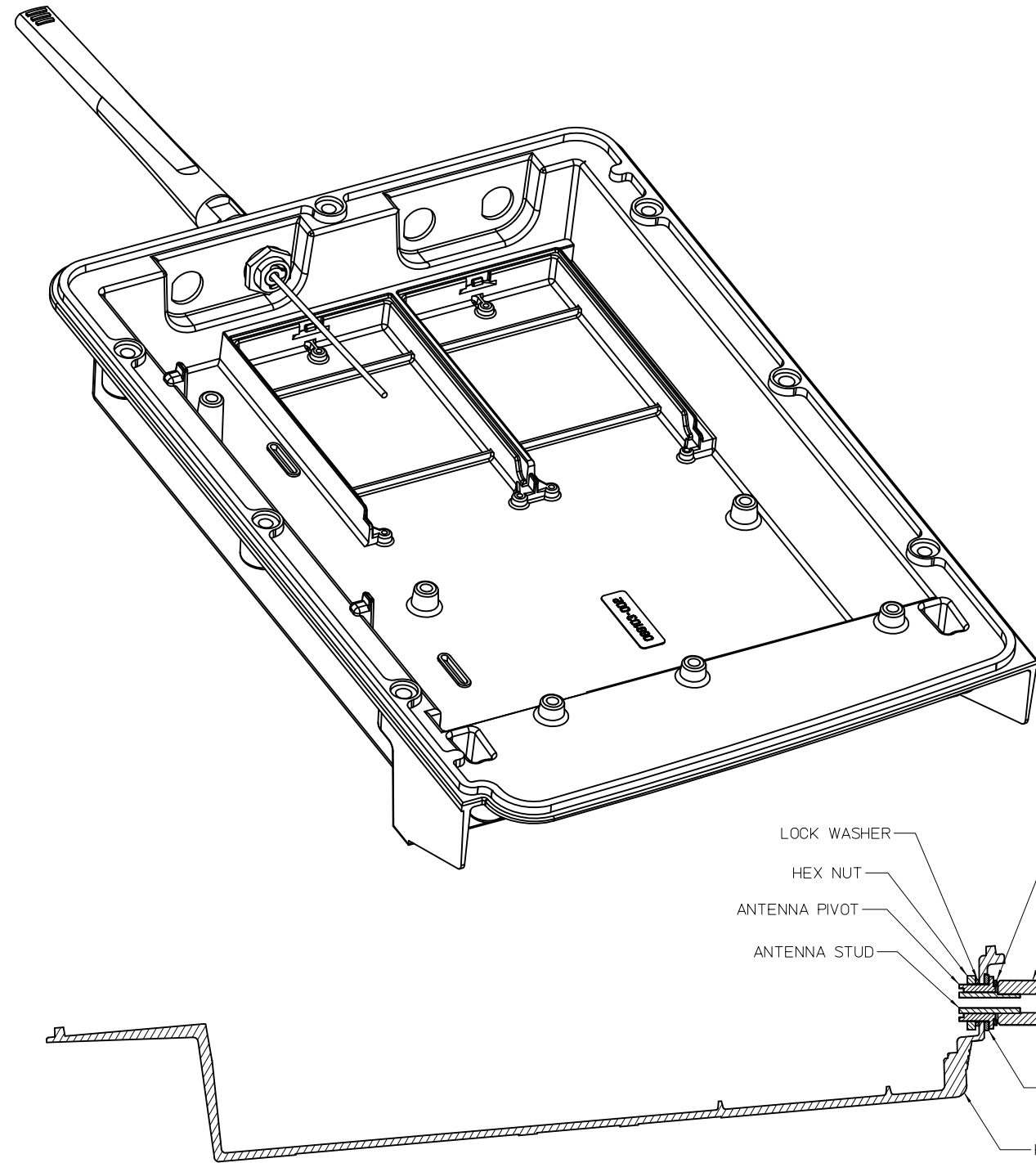
4

3

2

1

| REVISIONS | | | | | |
|-----------|-----|------|--------------------------|------|------------------|
| REV | ECN | ZONE | DESCRIPTION | DATE | DRAWN & APPROVED |
| 01 | | | INITIAL DRAWING CREATION | | |



LOCK WASHER
 HEX NUT
 ANTENNA PIVOT
 ANTENNA STUD
 SPRING WASHER
 ANTENNA BASE
 ANTENNA SHEATH
 RUBBER WASHER
 HOUSING

-001

| REVISION | REV STATUS OF SHEETS |
|----------|----------------------|
| 5 | |
| 4 | |
| 3 | |
| 2 | |
| 1 | SHEET |

NOTICE
 THIS DRAWING SHALL NOT BE DUPLICATED OR USED FOR ANY PURPOSE OTHER THAN THAT FOR WHICH PROVIDED. THE INFORMATION DISCLOSED HEREIN ORIGINATED BY AND IS THE PROPERTY OF INTERMEC TECHNOLOGIES CORPORATION AND EXCEPT FOR RIGHTS EXPRESSLY GRANTED BY WRITTEN CONSENT, SUCH INFORMATION SHALL NOT BE DISCLOSED OR DISSEMINATED WHOLE OR IN PART. INTERMEC TECHNOLOGIES CORPORATION RESERVES ALL PATENT, PROPRIETARY, DESIGN, USE, SALE, MANUFACTURING AND REPRODUCTION RIGHTS THERETO.

CAD DB.REF- /home/bzigler/spruce/dwg.fcc
 SYSTEM - HP-ME10

| APPROVALS | DATE |
|----------------|----------|
| DRAWN R.ZIGLER | 12-05-02 |
| CHECKED | |
| RESP ENG | |
| QA | |
| MFG ENG | |
| SAC | |
| CE/ID | |

UNLESS OTHERWISE SPECIFIED, DIMENSIONS ARE IN INCHES.

.X ±
 .XX ±
 .XXX ±
 ANGLES ±

Intermec Technologies Corporation
 6001 36TH AVENUE WEST
 EVERETT, WA 98203

TITLE NON-REMOVABLE ANTENNA,
 5GHZ

| SIZE | CAGE CODE | DRAWING NUMBER |
|------|-----------|----------------|
| D | 33825 | SKRZ120502-1 |

SCALE 1/1 USED ON WA21/22 SHEET 1 OF 1

7

6

5

4

3

2

1