

**Exhibit J: User Manual-WA21 & WA22**

**FCC ID: HN2MPCI3A-20**

# Important WA21/WA22 Information!

## Contents

For Users in the United States and Canada.....	2
For Users Outside of the United States and Canada .....	3
Pour les utilisateurs en dehors du Canada et des Etat-unis .....	3
Für Benutzer außerhalb von Kanada und den Vereinigten Staaten.....	4
Per gli utenti al di fuori del Canada o degli Stati Uniti .....	4
Para Usuarios Fuera de Canada o de los Estados Unidos.....	5
Para Usuários fora do Canadá ou dos Estados Unidos .....	5
<b>供美国和加拿大以外的用户使用 .....</b>	<b>6</b>

# For Users in the United States and Canada

Place this supplement in your manual.

## Federal Communications Commission Compliance

This device complies with Part 15 of the FCC Rules. Operation is subject to the following two conditions: (1) This device may not cause harmful interference, and (2) This device must accept any interference received, including interference that can cause undesired operation.

This equipment is intended for operation in a commercial environment, in compliance with the requirements for a Class A digital device, pursuant to Part 15 of the FCC Rules, and it must not be used in a residential environment; however, it has also been tested and found to comply with the more stringent requirements for a Class B device, pursuant to Part 15 of the FCC Rules. It generates, uses, and can radiate radio frequency energy. If not installed and used in accordance with the instruction manual, it may cause interference to radio communications. If this equipment causes interference, the user will be required to correct the interference at the user's own expense.



*Changes or modifications not expressly approved by Intermec could void the user's authority to operate this equipment.*



*Regulatory statements relating to the transceivers contained in this product are in a separate manual supplement accompanying the transceiver.*



In order to maintain compliance with FCC Rules, the input/output (I/O) cables that interconnect between the device and any peripheral must be as specified by Intermec.

## Industry Canada Compliance

This Class B digital apparatus meets all requirements of the Canadian Interference-Causing Equipment Regulations.

Cet appareil numérique de la classe B respecte toutes les exigences du Règlement sur le matériel brouilleur du Canada.

## Additional EMI/RFI Compliance

This device meets the Class B limit requirements of CISPR 22.

## Safety Agency Approvals

This device is UL and cUL Listed (UL 1950/C22.2 #950) and TÜV GS Licensed (EN 60950) for safety.

## **For Users Outside of the United States and Canada**

Place this supplement in your manual.

**C E** This product complies with EN55022, EN55024, and EN 60950 as required by the EMC Directive 89/336/EEC as amended by 92/31/EEC and by the Low Voltage Directive 73/23/EEC as amended by 93/68/EEC.

### **Safety Agency Approvals**

This device is UL and cUL Listed (UL 1950/C22.2 #950) and TÜV GS Licensed (EN 60950) for safety.

### **Additional EMI/RFI Compliance**

This device meets the Class B limit requirements of CISPR 22. This device complies with AS/NZS 3548 and other applicable rules under the Australian EMC framework.

## **Pour les utilisateurs en dehors du Canada et des Etat-unis**

Veillez placer ce supplément dans votre manuel.

### **Déclaration de conformité européenne**

**C E** Ce produit est conforme aux normes EN55022, EN55024 et EN 60950 tel qu'exigé par la directive de l'EMC n° 89/336/CEE amendée par l'article 92/31/CEE et par la directive sur la basse tension n° 73/23/CEE amendée par l'article 93/68/CEE.

### **Approbations d'agences pour la sécurité**

Cet appareil fait partie de la liste UL et cUL (UL 1950/C22.2 n° 950) et il est sous licence TÜV GS (EN 60950) en termes de sécurité.

### **Conformité additionnelle à la norme EMI/RFI**

Cet appareil respecte les limites imposées pour la Classe B par le CISPR 22.

# **Für Benutzer außerhalb von Kanada und den Vereinigten Staaten**

Legen Sie diese Ergänzung in Ihr Handbuch.

## **Europäische Übereinstimmungserklärung**

**CE** Dieses Produkt entspricht EN55022, EN55024, und EN 60950 in Übereinstimmung mit der EMC-Richtlinie 89/336/EWG, abgeändert durch 92/31/EWG, und der Richtlinie für Niederspannung 73/23/EWG, abgeändert durch 93/68/EWG.

## **Sicherheitszulassungen durch Prüfstellen**

Dieses Gerät ist in die UL- und die c-UL-Liste (UL 1950/C22.2 Nr. 950) aufgenommen und vom TÜV GS (EN 60950) gemäß der Sicherheitsnorm lizenziert.

## **Zusätzliche Elektromagnetische Störung-Übereinstimmung**

Dieses Gerät stimmt mit den Grenzbestimmungen der Klasse B von CISPR 22 überein.

# **Per gli utenti al di fuori del Canada o degli Stati Uniti**

Si prega di collocare questo supplemento nel manuale.

## **Dichiarazione europea di conformità**

**CE** Questo prodotto è conforme a EN55022, EN55024, e EN 60950 come richiesto dalla Direttiva EMC 89/336 CEE, modificata dalla 92/31/CEE e dalla Direttiva sulla bassa tensione 73/23/CEE, modificata dalla 93/68/CEE.

## **Approvazioni relative alla sicurezza**

Questo prodotto è conforme agli standard di sicurezza UL e cUL (UL 1950/CC22.2 n.950) e TÜV GS (EN 60950).

## **Ulteriore conformità con EMI/RFI**

Questo dispositivo è conforme ai limiti stabiliti in CISPR 22 per la Classe B.

## **Para Usuarios Fuera de Canada o de los Estados Unidos**

Por favor, coloque este suplemento dentro de su manual.

### **Declaración de conformidad europea**

**C** **€** Este producto cumple con las normas EN55022, EN55024, y EN 60950 de acuerdo a lo establecido por la directiva de EMC 89/336/CEE corregida por 92/31/CEE y por la directiva referente al bajo voltaje 73/23/CEE corregida por 93/68/CEE.

### **Aprobación de organismos de seguridad**

Este dispositivo está listado por UL y por cUL (UL 1950/C22.2#950) y está licenciado por TÜV GS (EN 60950) por razones de seguridad.

### **Conformidad adicional con EMI/RFI**

Este dispositivo cumple con los límites requeridos para la Clase B de CISPR 22.

## **Para Usuários fora do Canadá ou dos Estados Unidos**

Coloque este suplemento no seu manual.

### **Conformidade com a União Européia**

**C** **€** Este produto obedece o EN55022, EN55024, e EN 60950 como exigido pela Diretiva EMC 89/336/EEC como retificada pela 92/31/EEC e pela Diretiva de Baixa Voltagem 73/23/EEC como retificada pela 93/68/EEC.

### **Aprovações de Agência de Segurança**

Este dispositivo é listado na UL e cUL (UL 1950/C22.2#950) e licenciado pela TÜV GS (EN 60950) para questões de segurança.

### **Conformidades EMI/RFI Adicionais**

Este produto atende aos requisitos de limite Classe B do CISPR 22.

## 供美国和加拿大以外的用户使用

请将这一补充材料放在您的手册中。

### 安全机构批准情况

本产品符合UL (UL 1950 和 C22.2 #950) 以及 TÜV GS (EN 60950) 的安全规定。

### 其它 EMI/RFI 法规符合情况

这一装置符合 CISPR 22 的B类装置的限制要求。

WA21/WA22 Manual Supplement



\*072831-001\*

**Intermec**

Technologies Corporation  
6001 36th Avenue West  
Everett, WA 98203  
U.S.A.

[www.intermec.com](http://www.intermec.com)

© 2002 Intermec Technologies Corp.  
All Rights Reserved

# MobileLAN™ access WA21



6001 36th Avenue West  
Everett, WA 98203  
U.S.A.

[www.intermec.com](http://www.intermec.com)

© 2002 Intermec Technologies Corp.  
All Rights Reserved



MobileLAN access WA21 Quick Start Guide

\*072828-001\*

## Quick Start Guide



## Safety First

### Caution

Government regulatory agencies mandate that the antenna not be alterable. Therefore, the access point uses a custom antenna connector. Do not attempt to use a different antenna or you may damage the connector and the access point.

### Conseil

Les agences responsable de la réglementation gouvernementale exigent que l'antenne ne soit pas modifiable. Par conséquent, le point d'accès est doté d'un connecteur d'antenne personnalisé. Ne pas essayer d'utiliser une antenne différente au risque d'endommager le connecteur et le point d'accès.



**CAUTION**

## More Information

For more information on using the MobileLAN access WA21, please see the

- *MobileLAN access System Manual* (Part No. 067150).

- Intermec Web site at [www.intermec.com](http://www.intermec.com).

To order access point accessories and antennas, contact your local Intermec representative.

## About the WA21

Intermec's MobileLAN™ access family of access points delivers reliable and seamless wireless performance to almost any operational environment. The MobileLAN access WA21 is designed for standards-based connectivity and it may have up to two of the following radios installed:

- IEEE 802.11b
- IEEE 802.11a



The WA21 with an IEEE 802.11b radio installed is Wi-Fi certified for interoperability with other 802.11b wireless LAN devices.

This quick start guide helps you to understand the WA21 ports and LEDs. You can also use this quick start guide to learn how to install the WA21, how to connect the WA21 to power and to your network, and how to use the MobileLAN access Utility to configure its IP address. Once you assign the WA21 an IP address, you can continue configuring it using a Web browser interface or a Telnet session.

## Specifications

Physical dimensions 9.5 cm x 23.6 cm x 35.5 cm  
(3.75 in x 9.3 in x 14.0 in)

Weight 2.63 kg (5.8 lb)

Electrical rating ~100 to 240 V  
1.0 to 0.5A  
50 to 60 Hz

Power over Ethernet (optional) electrical rating 315 mA

Environmental rating IP 54

Operating temperature Standard -25°C to 70°C (-13°F to 158°F)  
Heater (optional) -30°C to 70°C (-22°F to 158°F)  
Heater and insulated bag (optional) -30°C to 0°C (-13°F to 32°F)

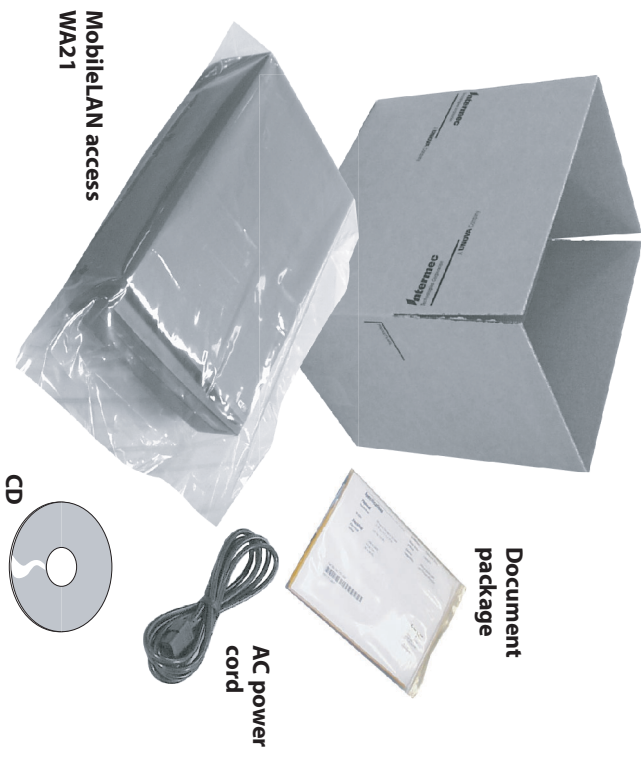
Storage temperature -40°C to 70°C (-40°F to 158°F)

Humidity 10 to 90%, non-condensing

### Patent information

Product is covered by one or more of the following patents: 4,910,794; 5,070,536; 5,295,154; 5,349,678; 5,394,436; 5,425,051; 5,428,636; 5,483,676; 5,504,746; 5,546,397; 5,574,979; 5,592,512; 5,680,633; 5,682,299; 5,696,903; 5,740,366; 5,790,536; 5,844,893; 5,862,171; 5,940,771; 5,960,344. There may be other U.S. and foreign patents pending.

## Out of the Box



MobileLAN access  
WA21



CD



AC power  
cord



Document  
package

**Note:** The WA21 does not ship with an antenna. For a list of antennas and antenna accessories, see the *MobileLAN access System Manual* (Part No. 067150).

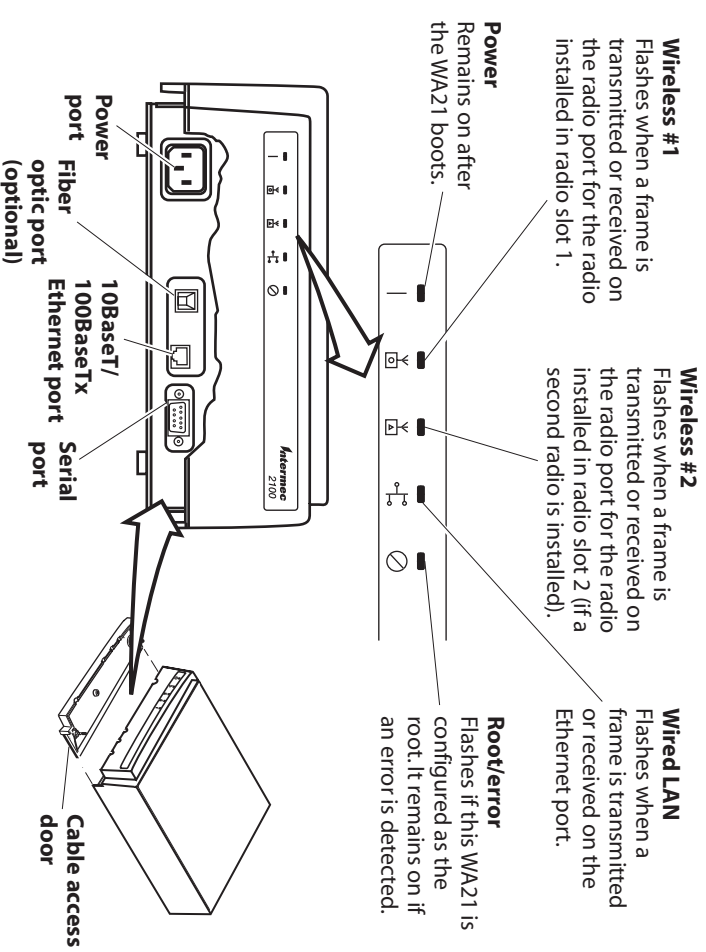


This product includes software developed by the OpenSSL Project for use in the OpenSSL Toolkit (<http://www.openssl.org>).  
This product includes cryptographic software written by Eric Young ([eyj@cryptosoft.com](mailto:eyj@cryptosoft.com)).



## 1 Defining the LEDs and Ports

To access the WA21 ports, unscrew the two thumbscrews that are on the front of the cable access door and then remove the door.



## 2 Setting an Initial IP Address

- 1 Install the MobileLAN access Utility on your PC by inserting the enclosed CD, clicking Install Software, and following the instructions that appear on your screen. You can also download the software from <http://mobilelan.intermec.com>.

**Note:** Your PC must be on the same Ethernet segment as the access point. Or, if your PC is communicating wirelessly with the access point, you must have an active radio connection.

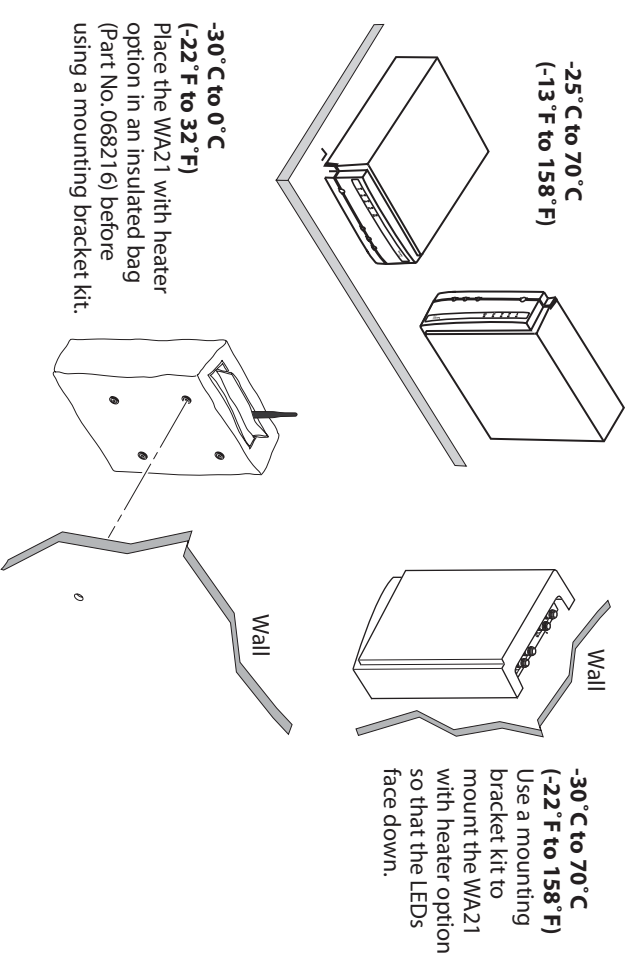
- 2 Start the utility.
- 3 Configure parameters A through C. See the screen to the right.
- 4 Click Set.
- 5 Reboot the access point by disconnecting it from and reconnecting it to a power source. The Status box lets you know when the new IP address is successfully set.

## 3 Mounting the WA21

You can place the WA21 either horizontally or vertically on a stable surface. You can also mount the WA21 to a wall or a beam using one of these mounting bracket kits:

- Mounting bracket kit (Part No. 068918)
- Rotating mounting bracket kit (Part No. 068751)

Depending on your operating temperature, you can use these mounting options:



**A** Click the down arrow and choose Set IP Address.

**B** Enter the Ethernet MAC address of the access point (printed on a label on the access point).

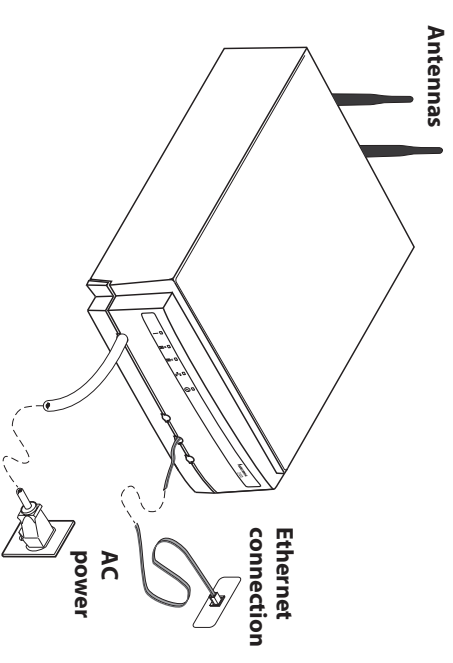
**C** Enter the new IP address of the access point.

### Congratulations!

Your wireless end devices can now begin transmitting data packets through the WA21 to your wired network. To continue configuring the access point, from the Actions menu choose Configure Access Point. Your Web browser application (e.g., Internet Explorer) starts and the Access Point Login screen appears.

## 3 Connecting the WA21

- 1 Attach antennas or antenna cables to the antenna connectors on the WA21. A variety of external antenna options are available.
- 2 Connect the WA21 to your network. You can either use an Ethernet cable to connect the Ethernet port to an Ethernet drop or you can use the fiber optic port option. For help connecting the WA21 to your fiber optic network, see "Connecting to Your Fiber Optic Network" in the *MobileLAN access System Manual*.
- 3 Connect the WA21 to power. You can either use an AC power cord or the power over Ethernet option. To use the power over Ethernet option, you need to use an Ethernet cable to connect the Ethernet port to a MobileLAN power bridge. For help, see the documentation that shipped with your power bridge.



## 5 Check for Software Upgrades

You should check the Intermec MobileLAN Web site at <http://mobilelan.intermec.com> for free software downloads and the latest documentation. To upgrade your access point software, follow the instructions in the *MobileLAN access System Manual*.

# MobileLAN™ access WA22



## Quick Start Guide



## Safety First



### CAUTION

**Caution**  
Government regulatory agencies mandate that the antenna not be alterable. Therefore, the access point uses a custom antenna connector. Do not attempt to use a different antenna or you may damage the connector and the access point.

**Conseil**  
Les agences responsables de la réglementation gouvernementale exigent que l'antenne ne soit pas modifiable. Par conséquent, le point d'accès est doté d'un connecteur d'antenne personnalisé. Ne pas essayer d'utiliser une antenne différente au risque d'endommager le connecteur et le point d'accès.

**Caution**  
You must use the appropriate Intermec power supply with these devices or equipment damage may occur.

**Conseil**  
Vous devez utiliser la source d'alimentation Intermec adéquate avec cet appareil sinon vous risquez d'endommager l'équipement.



### CAUTION



6001 36th Avenue West  
Everett, WA 98203  
U.S.A.

www.intermec.com

© 2002 Intermec Technologies Corp.  
All Rights Reserved



MobileLAN access WA22 Quick Start Guide

\*072829-001\*

To order access point accessories and antennas, contact your local Intermec representative.

• Intermec Web site at [www.intermec.com](http://www.intermec.com).

• *MobileLAN access System Manual* (Part No. 067150).

For more information on using the MobileLAN access WA22, please see the

Physical dimensions	3.8 cm x 16.0 cm x 25.0 cm (1.49 in x 6.27 in x 9.84 in)
Weight	526 g (1.16 lb)
Electrical rating	~100 to 240 V 1.0A 50 to 60 Hz
Operating temperature	-20°C to 65°C (-4°F to 149°F)
Storage temperature	-30°C to 70°C (-22°F to 158°F)
Humidity	10 to 90%, non-condensing

## Specifications

## About the WA22

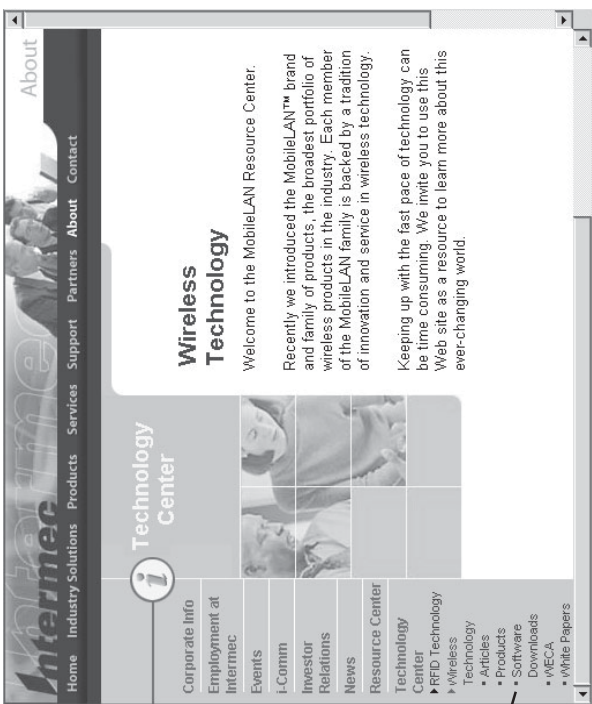
Intermec's MobileLAN™ access family of access points delivers reliable and seamless wireless performance to almost any operational environment. The MobileLAN access WA22 is designed for standards-based connectivity and it may have up to two of the following radios installed:

- IEEE 802.11b
- IEEE 802.11a



The WA22 with an IEEE 802.11b radio installed is Wi-Fi certified for interoperability with other 802.11b wireless LAN devices.

This quick start guide helps you to understand the WA22 ports and LEDs. You can also use this quick start guide to learn how to install the WA22, how to connect the WA22 to power and to your network, and how to use the MobileLAN access Utility to configure its IP address. Once you assign the WA22 an IP address, you can continue configuring it using a Web browser interface or a Telnet session.

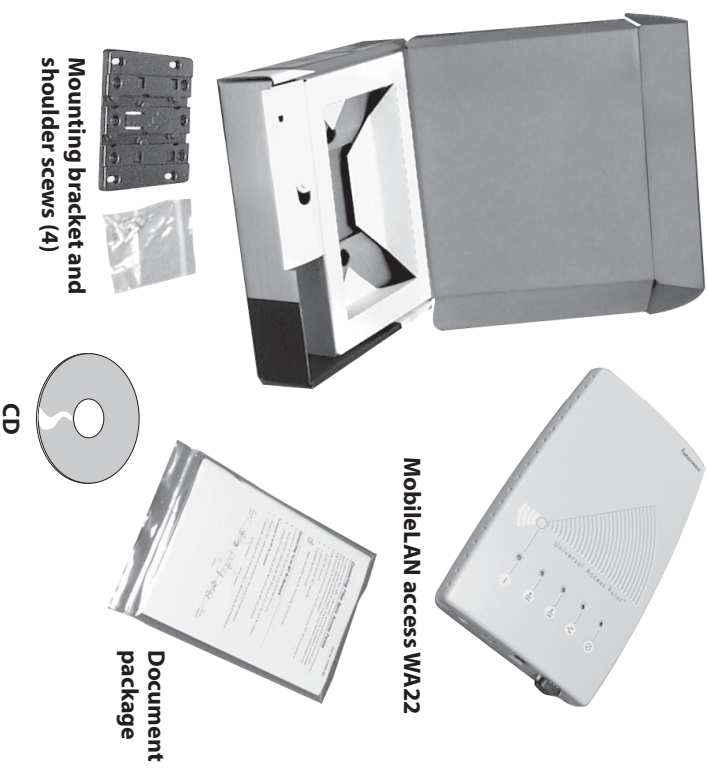


Click Software Downloads.

## Software Updates

You should check the Intermec MobileLAN Web site at <http://mobilelan.intermec.com> for free software downloads and the latest documentation. To upgrade your access point software, follow the instructions in the *MobileLAN access System Manual*.

## Out of the Box



MobileLAN access WA22

Document package

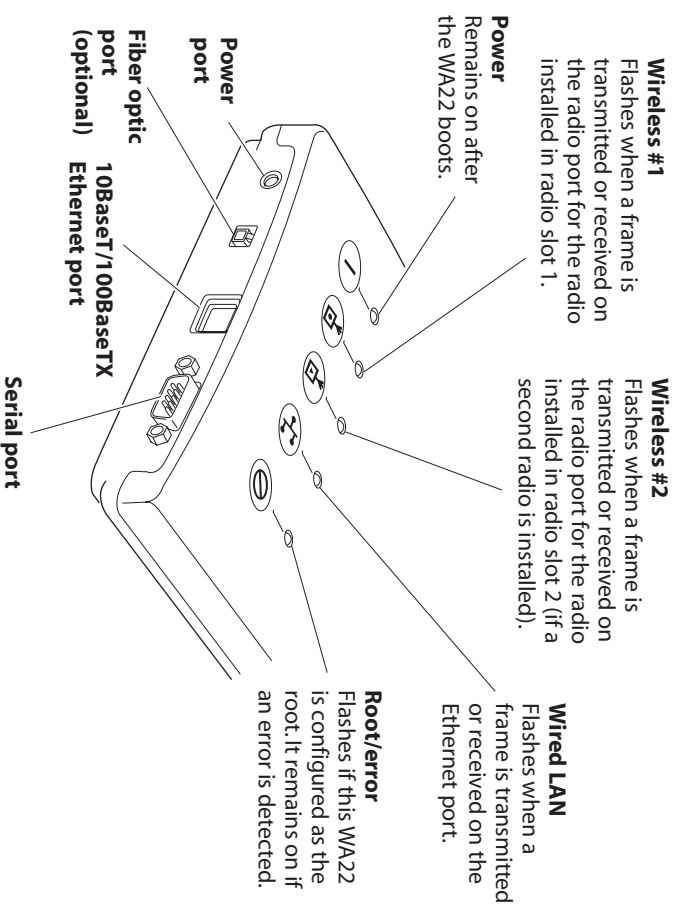
CD

Mounting bracket and shoulder screws (4)



**Note:** The WA22 does not ship with a power supply or an AC power cord. For a list of accessories, see the *MobileLAN access System Manual* (Part No. 067150) or contact your local Intermec representative.

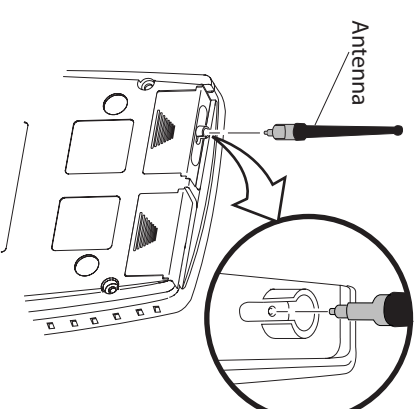
## 1 Defining the LEDs and Ports



## 2 Attaching an Antenna

- Carefully align the antenna with the antenna connector on the radio card in the WA22.
- Gently insert the antenna into the antenna connector until you feel the antenna click into place.

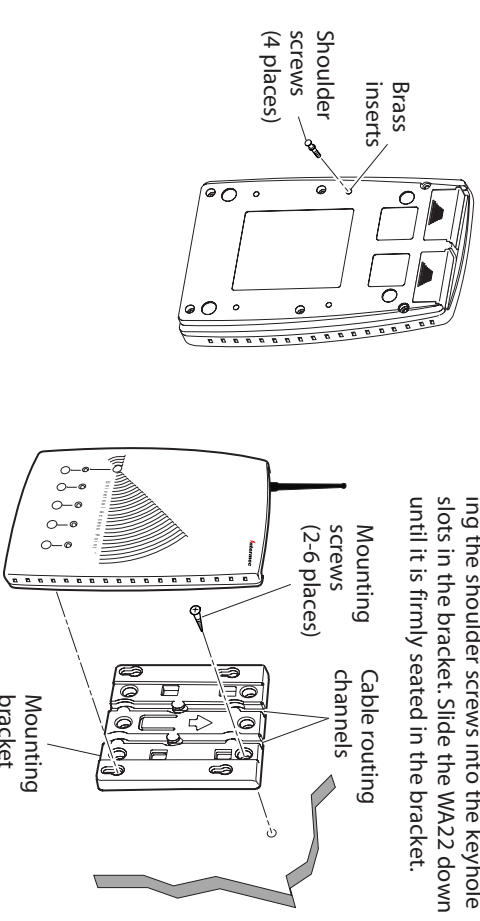
**Note:** Internec offers a variety of antennas and antenna accessories. For a complete list, see the *MobilELAN access System Manual*.



## Mounting the WA22 (continued)

### To use the wall bracket

- Insert one shoulder screw into each of the brass inserts and tighten securely.
- Using the mounting bracket as a template, mark the location of the mounting holes on the mounting surface.
- Drill the holes.
- Position the bracket on the wall with the arrow pointing up.
- Using mounting screws you provide, secure the bracket to the wall.
- Route the cables through the cable routing channels.
- Mount the WA22 in the bracket by inserting the shoulder screws into the keyhole slots in the bracket. Slide the WA22 down until it is firmly seated in the bracket.



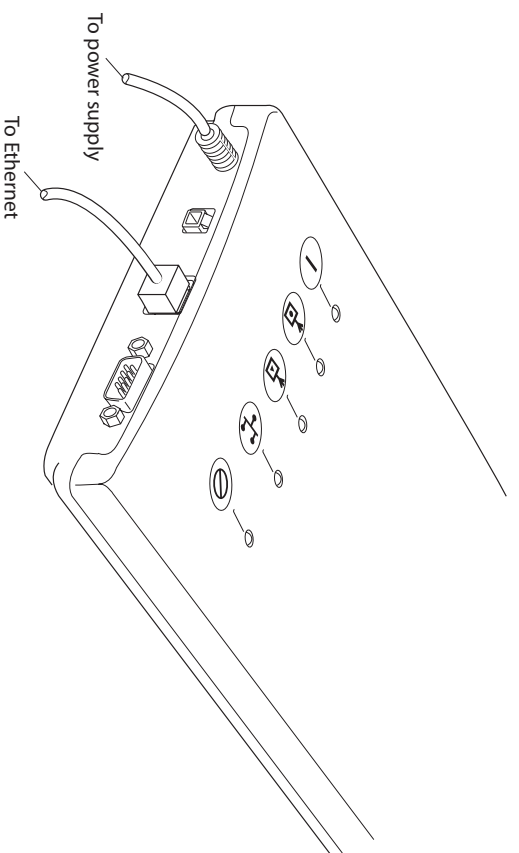
## 3 Mounting the WA22

You can place the WA22 on a stable surface or you can mount it to a wall or beam using the wall bracket.

**Note:** Internec offers a variety of mounting bracket kits. For a complete list, see the *MobilELAN access System Manual*.

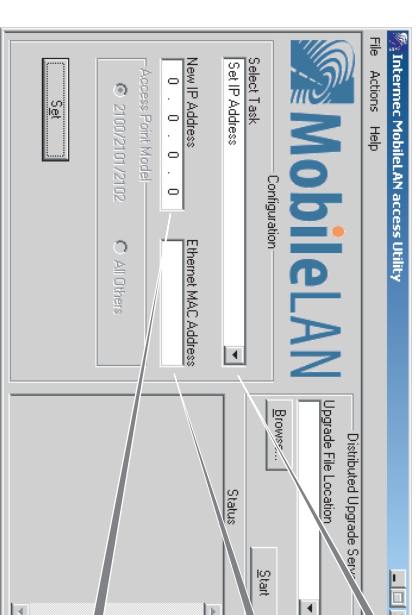
## 4 Connecting the WA22

- Connect the WA22 to your network. You can either use an Ethernet cable to connect the Ethernet port to an Ethernet drop, or you can use the fiber optic port option. For help connecting the WA22 to your fiber optic network, see "Connecting to Your Fiber Optic Network" in the *MobilELAN access System Manual*.
- Connect the WA22 to power. You can either use an AC power supply with the appropriate power cord or power over Ethernet. To use power over Ethernet, you use an Ethernet cable to connect the Ethernet port to a MobilELAN splitter, which is connected to a MobilELAN power bridge. For help, see the documentation that shipped with your splitter and/or power bridge.



## 5 Setting an Initial IP Address

- Install the MobilELAN access Utility on your PC by inserting the enclosed CD, clicking Install Software, and following the instructions that appear on your screen. You can also download the software from <http://mobilelan.internec.com>.  
**Note:** Your PC must be on the same Ethernet segment as the access point. Or, if your PC is communicating wirelessly with the access point, you must have an active radio connection.
- Start the utility.
- Configure parameters A through C. See the screen to the right.
- Click Set.
- Reboot the access point by disconnecting it from and reconnecting it to a power source. The Status box lets you know when the new IP address is successfully set.



- Click the down arrow and choose Set IP Address.
- Enter the Ethernet MAC address of the access point (printed on a label on the access point).
- Enter the new IP address of the access point.

### Congratulations!

Your wireless end devices can now begin transmitting data packets through the WA22 to your wired network. To continue configuring the access point, from the Actions menu choose Configure Access Point. Your Web browser application (e.g., Internet Explorer) starts and the Access Point Login screen appears.