

## **Exhibit O: User Guide 2**

**FCC ID: HN2MG18**

# Quick Start Guide

*P/N 962-054-029  
Revision B  
March 2001*

## 700 Series Mobile Computer



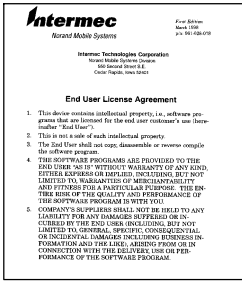
**Intermec**

A **UNOVA** Company

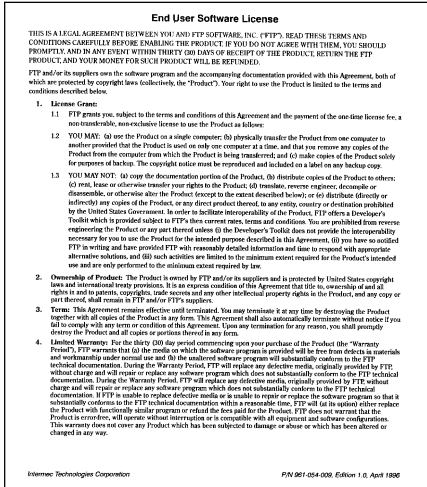
*P/N 962-054-029 Revision B*

\* 962054029 \*





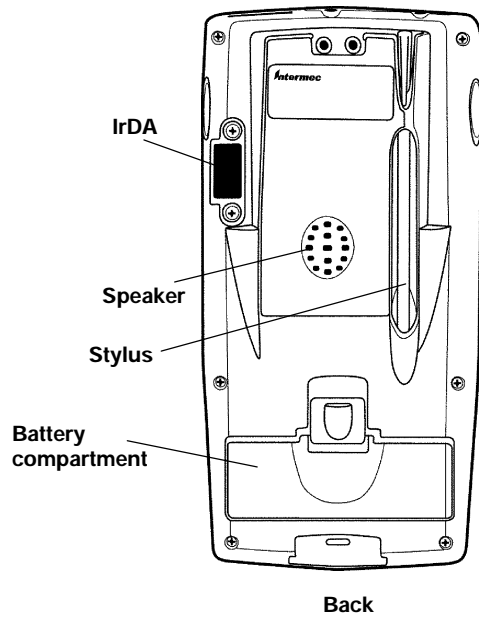
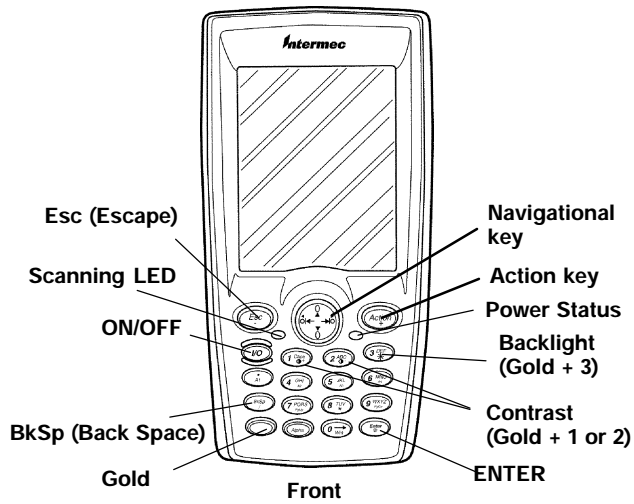
End User License Agreement



End User Software License

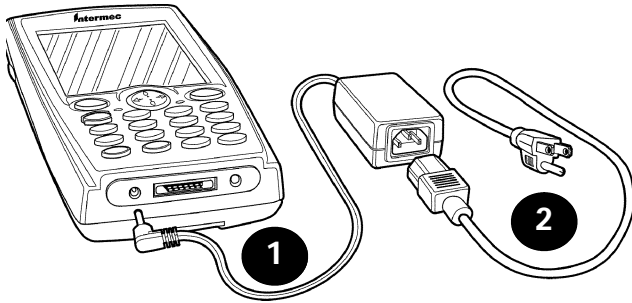
# Getting Started

## The Main Components



### Exterior Features

**First Thing Before Using: Charge the battery four hours.**



*Connecting to Charger*

## **Booting Your Computer**

The following steps outline the initial boot and Pocket PC load on your 700 Series Mobile Computer.

1. The bootloader which resides in flash, loads the operating system from the CompactFlash card into RAM.
2. The first time your computer is started you may have to calibrate your display screen. You need to calibrate the screen if it is too inaccurate to use the touch screen. Run through the tutorial, set your time zone region, and follow the prompts.

3. The AutoRun feature of Pocket PC searches for the AutoRun.exe in the \2577 folder on the CompactFlash card. If found, the program executes.  
If no applications are auto started then the "Today" screen appears.

### ***Pen Calibration Utility***

1. Press [Gold] and [0] to open the Start menu.
2. Use the navigational key to scroll down to settings and press [Enter]. You need to get to the System tab.
3. Press the down and/or right and left arrows (not tabs) until one of the items on the screen is highlighted.
4. Press the right tab until no items are highlighted.
5. Press the right arrow [Gold][right arrow] to bring up the System tab.
6. Press the up or down arrow until "Align Screen" highlights.
7. Press the [Enter] key once then again to start the align process..
8. Recalibrate the screen by touching all the targets at the center of the cross hairs.
9. Verify the calibration settings were saved and is now on target.