

# Schmid & Partner Engineering AG

Zeughausstrasse 43, 8004 Zurich, Switzerland, Phone +41 1 245 97 00, Fax +41 1 245 97 79

## Calibration Certificate

### 2450 MHz System Validation Dipole

Type:

**D2450V2**

Serial Number:

**706**

Place of Calibration:

**Zurich**

Date of Calibration:

**June 4, 2002**

Calibration Interval:

**24 months**

Schmid & Partner Engineering AG hereby certifies, that this device has been calibrated on the date indicated above. The calibration was performed in accordance with specifications and procedures of Schmid & Partner Engineering AG.

Wherever applicable, the standards used in the calibration process are traceable to international standards. In all other cases the standards of the Laboratory for EMF and Microwave Electronics at the Swiss Federal Institute of Technology (ETH) in Zurich, Switzerland have been applied.

Calibrated by:

*D. Keller*

Approved by:

*Thomas Keller*

# DASY3

## Dipole Validation Kit

Type: D2450V2

Serial: 706

Manufactured: May 28, 2002

Calibrated: June 4, 2002

## **1. Measurement Conditions**

The measurements were performed in the flat section of the new SAM twin phantom filled with head simulating solution of the following electrical parameters at 2450 MHz:

Relative permittivity	<b>38.3</b>	$\pm 5\%$
Conductivity	<b>1.90 mho/m</b>	$\pm 10\%$

The DASY3 System (Software version 3.1d) with a dosimetric E-field probe ET3DV6 (SN:1507, conversion factor 5.0 at 2450 MHz) was used for the measurements.

The dipole feedpoint was positioned below the center marking and oriented parallel to the body axis (the long side of the phantom). The standard measuring distance was 10mm from dipole center to the solution surface. The included distance holder was used during measurements for accurate distance positioning.

The coarse grid with a grid spacing of 20mm was aligned with the dipole. The 5x5x7 fine cube was chosen for cube integration. Probe isotropy errors were cancelled by measuring the SAR with normal and 90° turned probe orientations and averaging.

The dipole input power (forward power) was 250mW  $\pm 3\%$ . The results are normalized to 1W input power.

### **2.1. SAR Measurement with DASY3 System**

Standard SAR-measurements were performed according to the measurement conditions described in section 1. The results (see figure supplied) have been normalized to a dipole input power of 1W (forward power). The resulting averaged SAR-values measured with the dosimetric probe ET3DV6 SN:1507 and applying the worst-case extrapolation are:

averaged over 1 cm <sup>3</sup> (1 g) of tissue:	<b>57.6 mW/g</b>
averaged over 10 cm <sup>3</sup> (10 g) of tissue:	<b>26.6 mW/g</b>

### **2.2. SAR Measurement with DASY4 System**

Standard SAR-measurements were performed according to the measurement conditions described in section 1. The results (see figure supplied) have been normalized to a dipole input power of 1W (forward power). The resulting averaged SAR-values measured with the dosimetric probe ET3DV6 SN:1507 and applying the advanced extrapolation are:

averaged over 1 cm <sup>3</sup> (1 g) of tissue:	<b>54.4 mW/g</b>
averaged over 10 cm <sup>3</sup> (10 g) of tissue:	<b>25.4 mW/g</b>

### **3. Dipole impedance and return loss**

The impedance was measured at the SMA-connector with a network analyzer and numerically transformed to the dipole feedpoint. The transformation parameters from the SMA-connector to the dipole feedpoint are:

Electrical delay:	<b>1.143 ns</b>	(one direction)
Transmission factor:	<b>0.997</b>	(voltage transmission, one direction)

The dipole was positioned at the flat phantom sections according to section 1 and the distance holder was in place during impedance measurements.

Feedpoint impedance at 2450 MHz:	$\text{Re}\{Z\} = 49.6 \Omega$
----------------------------------	--------------------------------

	$\text{Im}\{Z\} = 1.4 \Omega$
--	-------------------------------

Return Loss at 2450 MHz	<b>- 36.3 dB</b>
-------------------------	------------------

### **4. Handling**

Do not apply excessive force to the dipole arms, because they might bend. Bending of the dipole arms stresses the soldered connections near the feedpoint leading to a damage of the dipole.

### **5. Design**

The dipole is made of standard semirigid coaxial cable. The center conductor of the feeding line is directly connected to the second arm of the dipole. The antenna is therefore short-circuited for DC-signals.

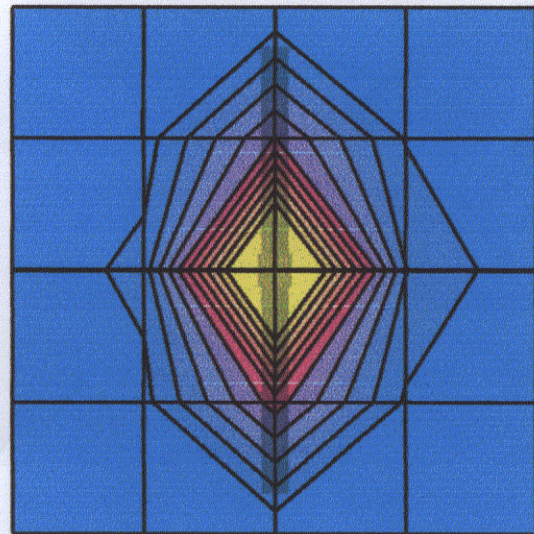
Small end caps have been added to the dipole arms in order to improve matching when loaded according to the position as explained in Section 1. The SAR data are not affected by this change. The overall dipole length is still according to the Standard.

### **6. Power Test**

After long term use with 40W radiated power, only a slight warming of the dipole near the feedpoint can be measured.

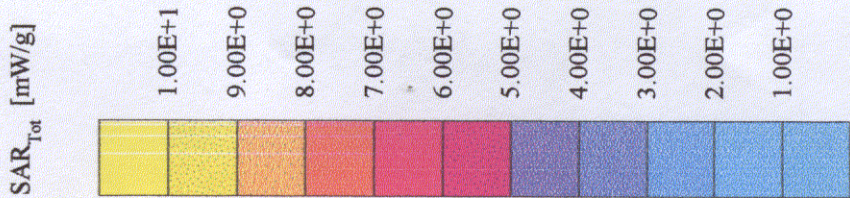
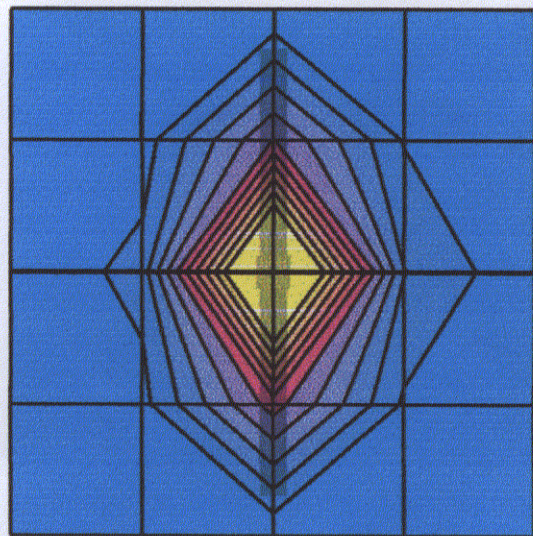
### Validation Dipole D2450V2 SN706, d = 10 mm

Frequency: 2450 MHz; Antenna Input Power: 250 [mW]  
SAM Phantom; Flat Section; Grid Spacing: Dx = 20.0, Dy = 20.0, Dz = 10.0  
Probe: ET3D6 - SN1507; ConvF(5.00,5.00) at 2450 MHz; IEEE1528 2450 MHz;  $\sigma = 1.90$  mho/m  $\epsilon_r = 38.3$   $\rho = 1.00$  g/cm<sup>3</sup>  
Cubes (2): Peak: 27.0 mW/g  $\pm 0.05$  dB, SAR (1g): 13.6 mW/g  $\pm 0.03$  dB, SAR (10g): 6.36 mW/g  $\pm 0.02$  dB, (Advanced extrapolation)  
Penetration depth: 6.9 (6.7, 7.1) [mm]  
Powerdrift: -0.01 dB



### Validation Dipole D2450V2 SN706, d = 10 mm

Frequency: 2450 MHz; Antenna Input Power: 250 [mW]  
SAM Phantom; Flat Section; Grid Spacing: Dx = 20.0, Dy = 20.0, Dz = 10.0  
Probe: ET3DV6 - SN1507; ConvF(5.00,5.00,5.00) at 2450 MHz; IEEE1528 2450 MHz:  $\sigma = 1.90$  mho/m  $\epsilon_r = 38.3$   $\rho = 1.00$  g/cm<sup>3</sup>  
Cubes (2): Peak: 29.6 mW/g  $\pm 0.05$  dB, SAR (1g): 14.4 mW/g  $\pm 0.03$  dB, SAR (10g): 6.66 mW/g  $\pm 0.02$  dB, (Worst-case extrapolation)  
Penetration depth: 6.6 (6.4, 7.1) [mm]  
Powerdrift: -0.01 dB



30 May 2002 16:04:33

CH1 S11 1 U FS

1: 49.566  $\omega$  1.4473  $\omega$  94.016 pH

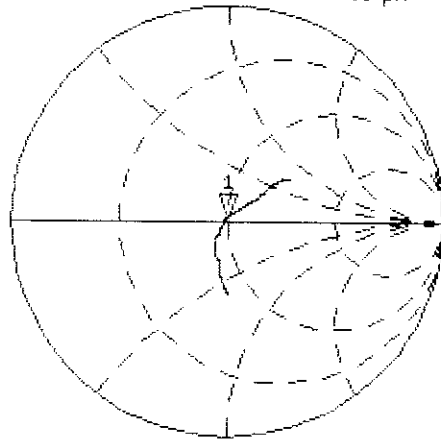
2 450.000 000 MHz

Del

PRM

Cor  
Avg  
16

↑

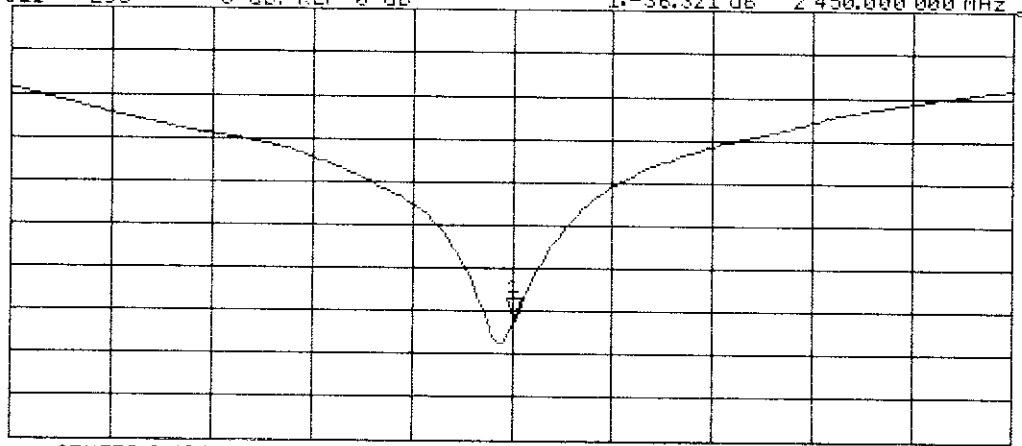


CH2 S11 LOG 5 dB/REF 0 dB

1: -36.321 dB 2 450.000 000 MHz

PRM  
Cor

↑



CENTER 2 450.000 000 MHz

SPAN 450.000 000 MHz