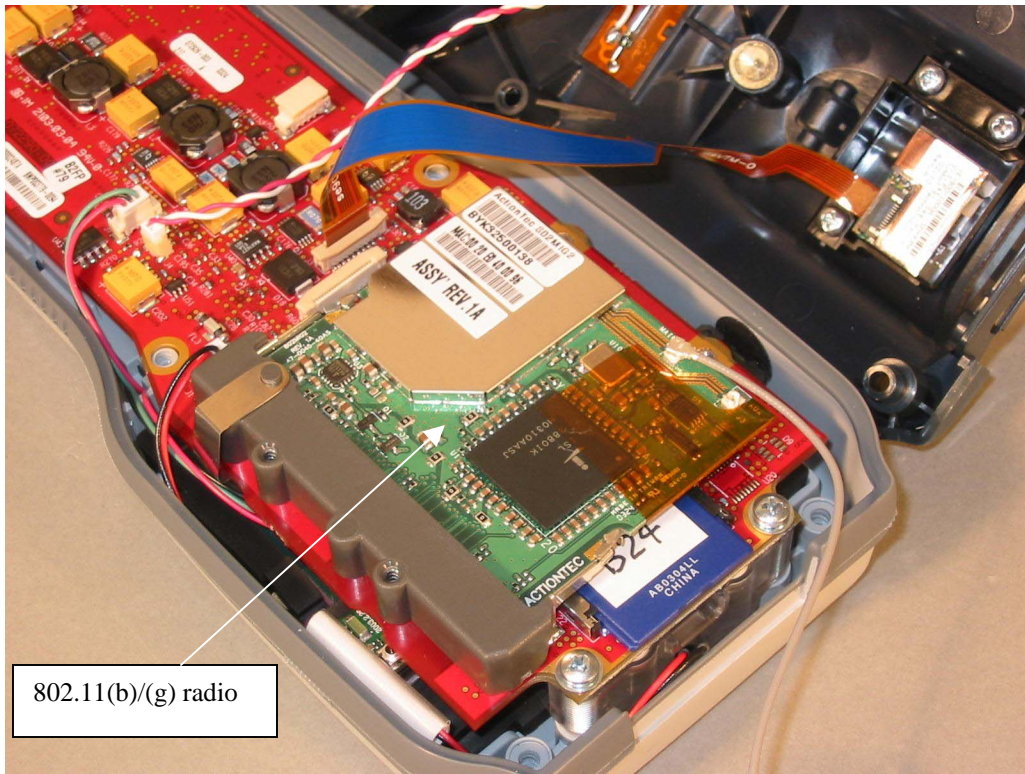
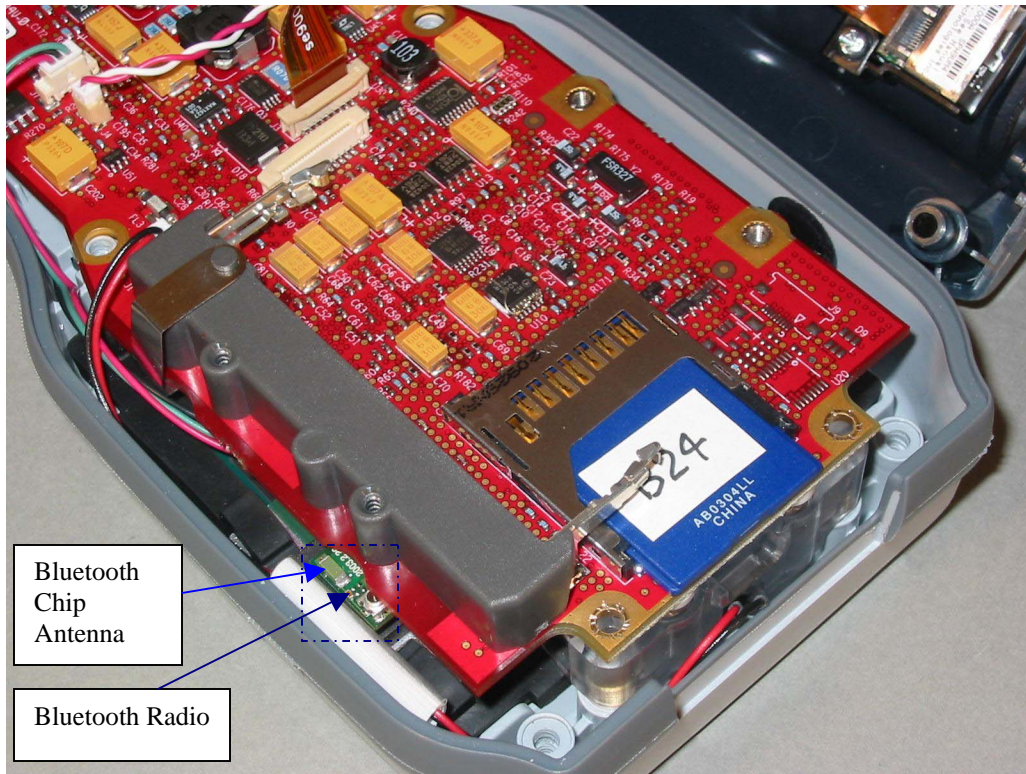


Internal View



Internal View with 802.11 antenna and shield removed

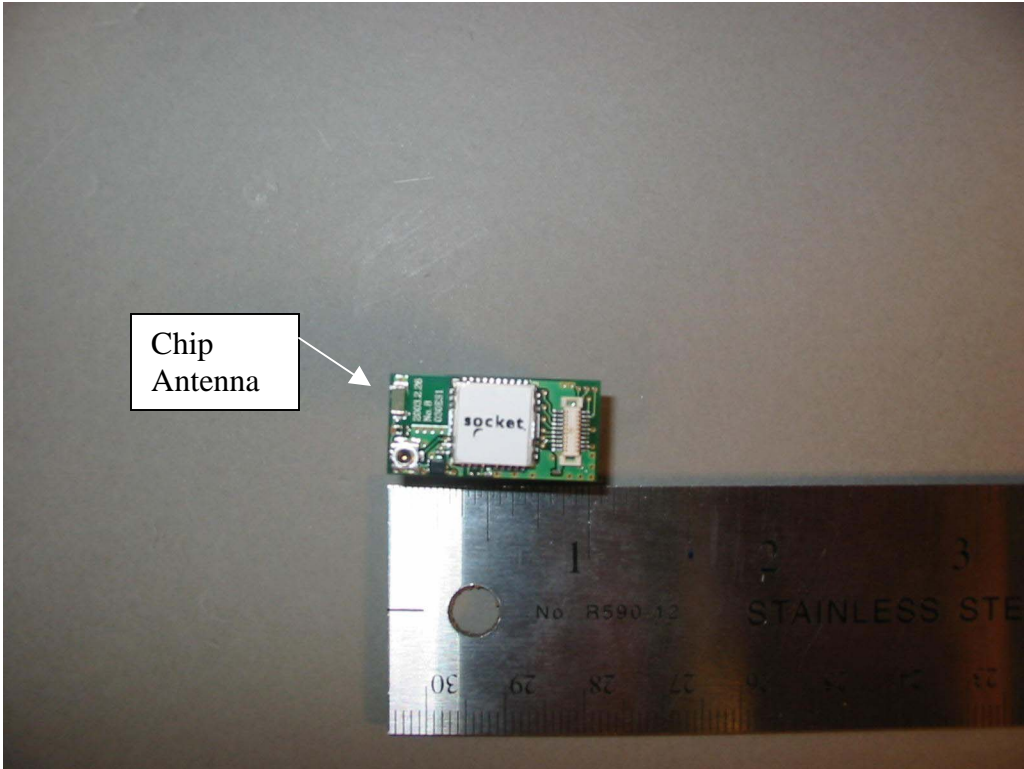


Bluetooth  
Chip  
Antenna

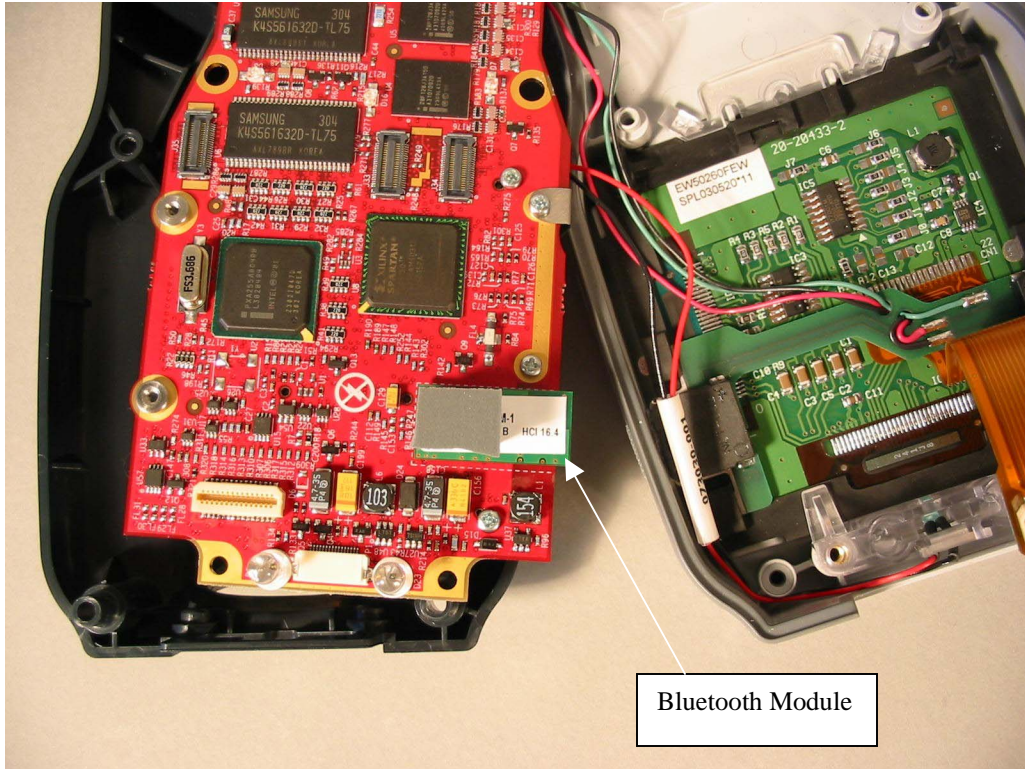
Bluetooth Radio

Internal View with 802.11(b) / (g) card removed





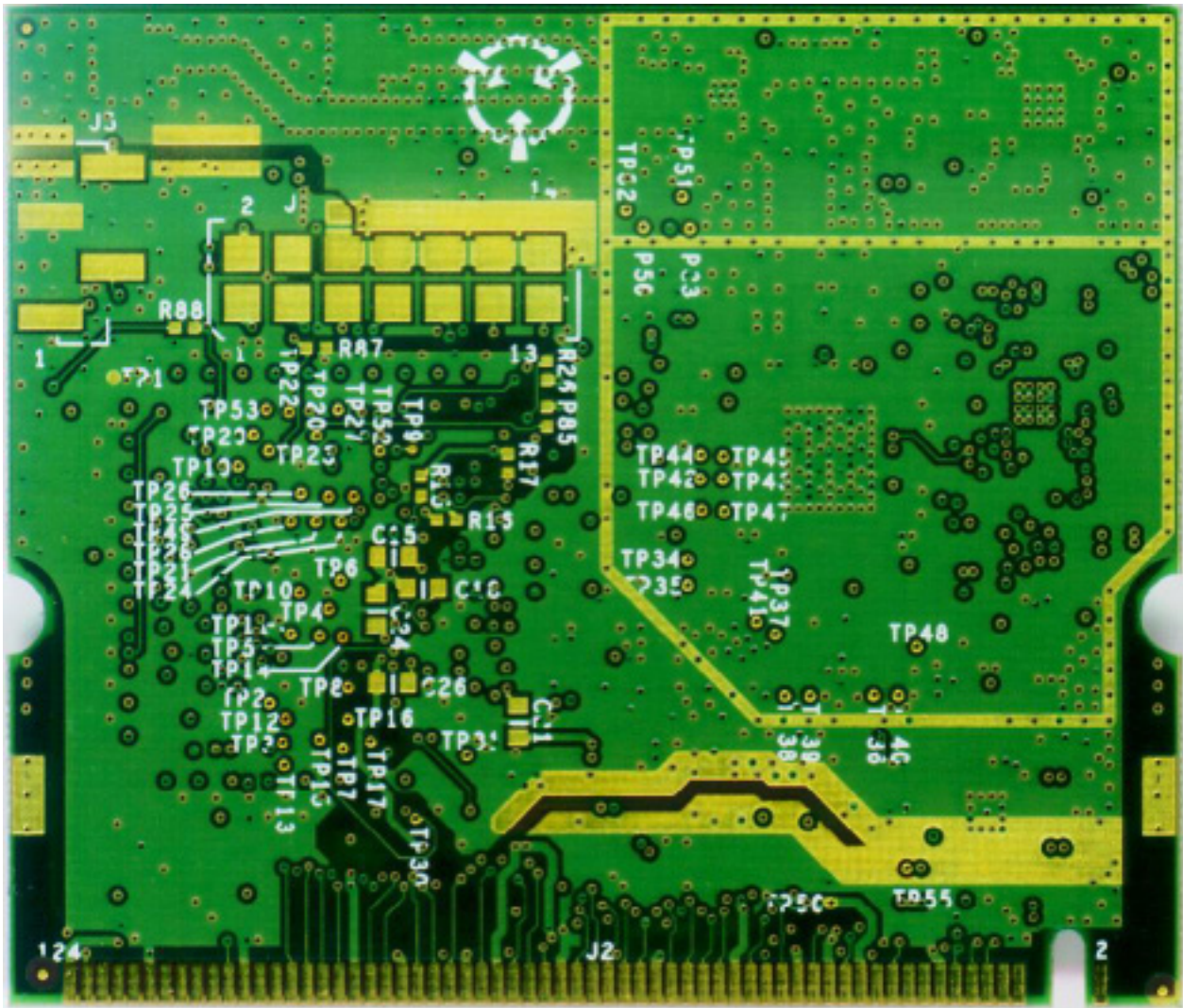
Bluetooth Radio module removed from EUT



Bluetooth Module

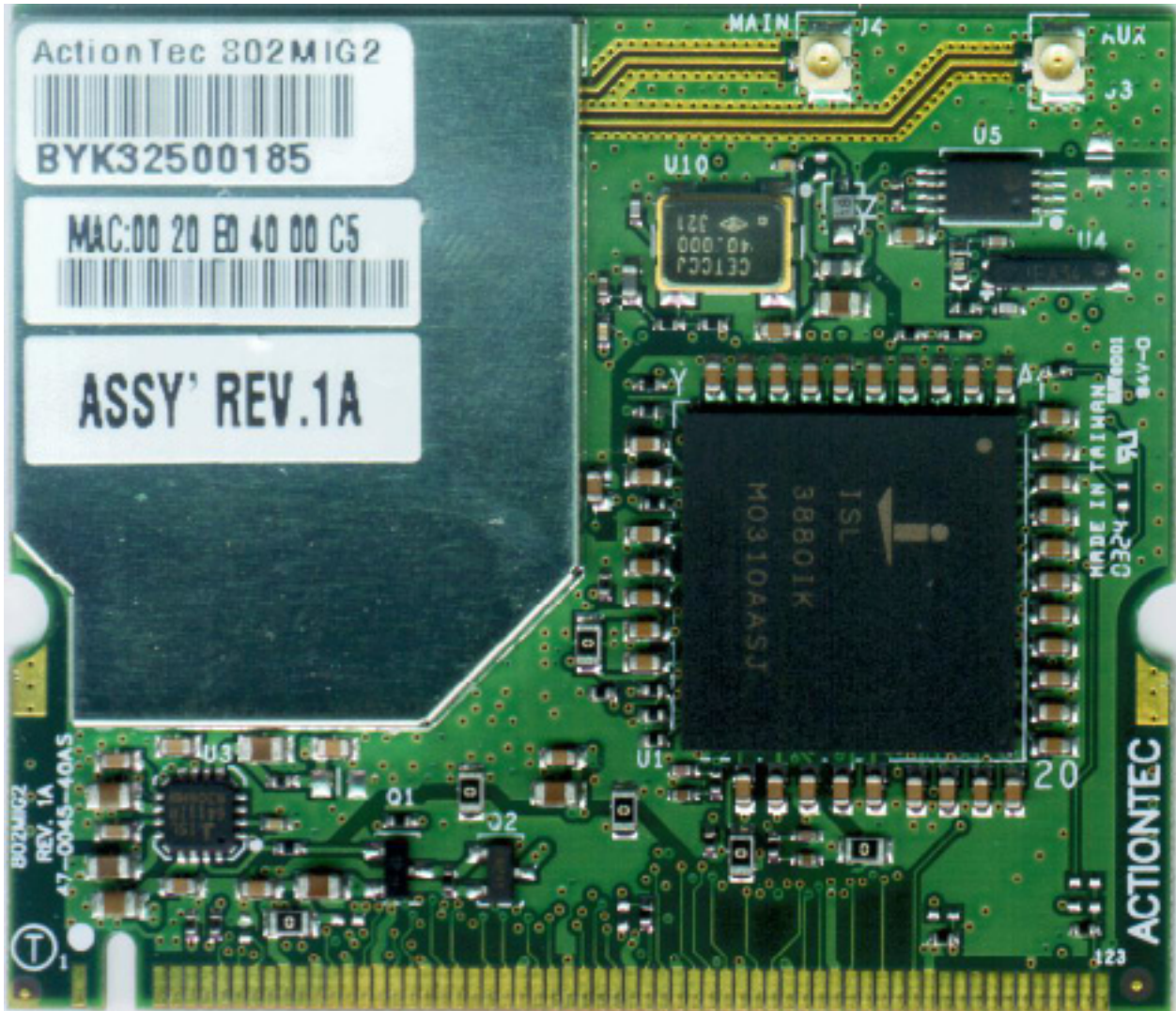
Internal View –Bluetooth Module located underneath System Board (802.11 radio is located on top of System board)

# 802.11(b) / (g) radio Card (Solder Side)





802.11(b) / (g) radio Card (Component Side)



**802.11(b) / (g) radio card with Shield Removed**

