

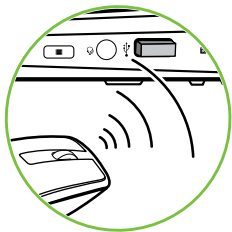
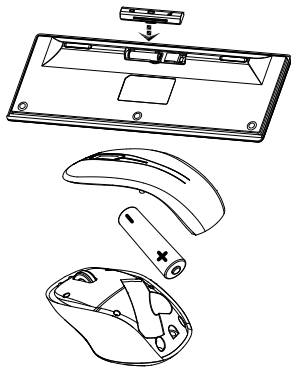
Aspire S 24

SETUP GUIDE D17W8

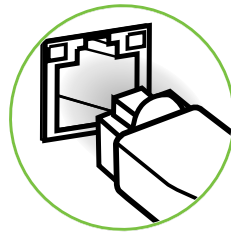
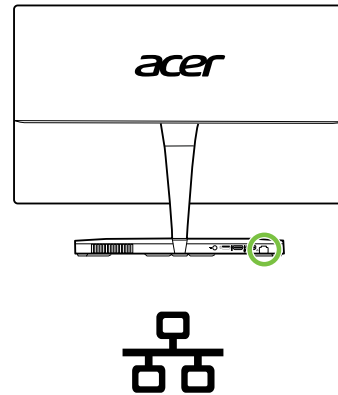


DC.BA911.001

1 Connect the keyboard and mouse

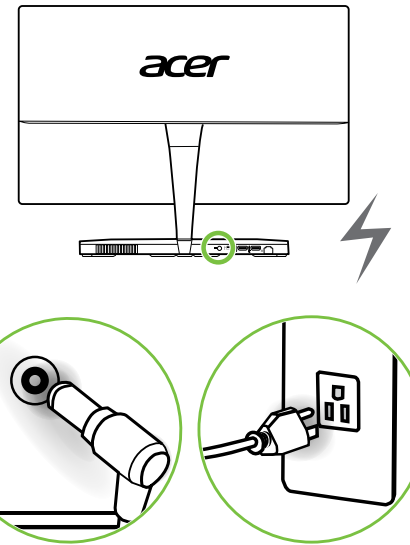


2 Connect the network

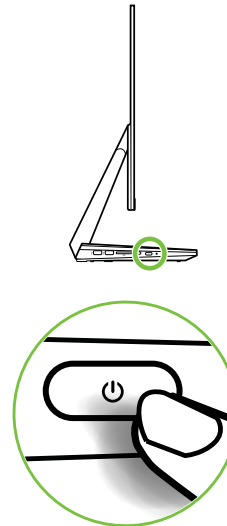


Please refer to the rear of this poster connecting to a wireless network.

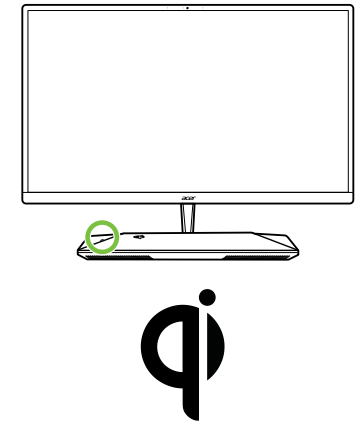
3 Connect the power cable



4 Turn on your computer



5 Wireless Charger LED indicator



Wireless Charger LED indicator:

Color	Status
Green	Flashing: Low-power charging. (≤ 5 Watt)
	Steady: Low-power charging complete.
Blue	Flashing: Middle-power charging. (≤ 15 Watt)
	Steady: Middle-power charging complete.
Red	Flashing: A metallic device has been detected in the wireless charging area. Remove the metallic device.
	Steady: The charging device detects charging abnormality.
Amber	Flashing: The low-power charging device on the charging area has poor receiver sensitivity
Purple	Flashing: The middle-power charging device on the charging area has poor receiver sensitivity.

Wireless charging area

Wireless charging output: Max up to 15W (Depends if the device supports 15W WPC wireless charging.)

Warranty on safety

1. Remove your WPC charging device from any metallic cases before recharging.
2. Do not place any aluminum or metallic products on the charging area.
3. Do not place any plastic cards (credit card) or storage media (hard disk drive) containing magnetic strips on the charging area.