

ASPIRE ONE *Series*
Quick Guide

ASPIRE ^{one} Series

Copyright © 2008. Acer Incorporated.
All Rights Reserved.
Aspire one Series Quick Guide
Original Issue: 12/2008

This company makes no representations or warranties, either expressed or implied, with respect to the contents hereof and specifically disclaims the implied warranties of merchantability or fitness for a particular purpose. Any liability for errors (such as typos or factual errors, etc.) contained in this publication is excluded.

Changes may be made periodically to the information in this publication without obligation to notify any person of such revisions or changes. Such changes will be incorporated in new editions of this manual or supplementary documents and publications. This company makes no representations or warranties, either expressed or implied, with respect to the contents hereof and specifically disclaims the implied warranties of merchantability or fitness for a particular purpose.

Record the model number, serial number, purchase date and place of purchase information in the space provided below. The serial number and model number are recorded on the label affixed to your computer. All correspondence concerning your unit should include the serial number, model number and purchase information.

No part of this publication may be reproduced, stored in a retrieval system, or transmitted, in any form or by any means, electronically, mechanically, by photocopy, recording or otherwise, without the prior written permission of Acer Incorporated.

Aspire one Series Notebook PC

Model number: _____

Serial number: _____

Date of purchase: _____

Place of purchase: _____

Acer and the Acer logo are registered trademarks of Acer Incorporated. Other companies' product names or trademarks are used herein for identification purposes only and belong to their respective companies.

Federal Communications Commission Declaration of Conformity

This device complies with Part 15 of the FCC Rules. Operation is subject to the following two conditions: (1) This device may not cause harmful interference, and (2) This device must accept any interference received, including interference that may cause undesired operation.

The following local manufacturer/importer is responsible for this declaration:

Product name:	Notebook PC
Model number:	KAV10
Machine type:	<i>Aspire one</i>
SKU number:	<i>Aspire one-xxxxx</i> ("x" = 0 - 9, a - z, or A - Z)
Name of responsible party:	Acer America Corporation
Address of responsible party:	333 West San Carlos St. San Jose, CA 95110 USA
Contact person:	Acer Representative
Tel:	1-254-298-4000
Fax:	1-254-298-4147

CE Declaration of Conformity

We,

Acer Computer (Shanghai) Limited
3F, No. 168 Xizang Medium Road, Huangpu District,
Shanghai, China

Contact person: Mr. Easy Lai

Tel: 886-2-8691-3089, Fax: 886-2-8691-3000

E-mail: easy_lai@acer.com.tw

Hereby declare that:

Product: Notebook PC

Trade name: Acer

Model number: KAV10

Machine type: *Aspire one*

SKU number: *Aspire one*-xxxxx ("x" = 0 - 9, a - z, or A - Z)

Is compliant with the essential requirements and other relevant provisions of the following EC directives, and that all the necessary steps have been taken and are in force to assure that production units of the same product will continue complying with the requirements.

EMC Directive 2004/108/EC as attested by conformity with the following harmonized standards:

- EN55022:1998 + A1:2000 + A2:2003, AS/NZS CISPR22:2002, Class B
- EN55024:1998 + A1:2001 + A2:2003
- EN55013:2001 + A1:2003 + A2:2005 (Applied to products with TV function)
- EN55020:2007 (Applied to products with TV function)
- EN61000-3-2:2000 + A2:2005, Class D
- EN61000-3-3:1995 + A1:2001 + A2:2005



Low Voltage Directive 2006/95/EC as attested by conformity with the following harmonized standards:

- EN60950-1:2001 + A11:2004
- EN60065:2002 (applies to product with TV function)

Council Decision 98/482/EC (CTR21) for pan- European single terminal connection to the Public Switched Telephone Network (PSTN).

RoHS Directive 2002/95/EC on the Restriction of the Use of certain Hazardous Substances in Electrical and Electronic Equipment.

R&TTE Directive 1999/5/EC as attested by conformity with the following harmonized standards:

- Article 3.1(a) Health and Safety
 - EN60950-1:2001+ A11:2004
 - EN50371:2002
- Article 3.1(b) EMC
 - EN301 489-1 V1.4.1
 - EN301 489-3 V1.4.1
 - EN301 489-17 V1.2.1
- Article 3.2 Spectrum Usages
 - EN300 220-3 V1.1.1
 - EN300 328 V1.6.1
 - EN300 440-2 V1.1.2
 - EN301 893 V1.2.3

CE Issued Date: 29 February 2008

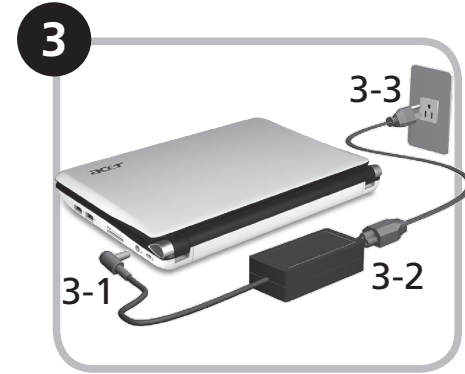
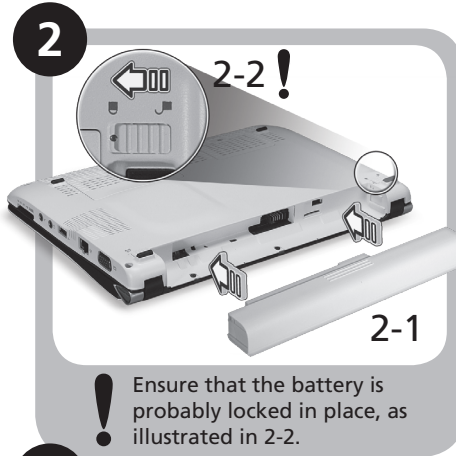
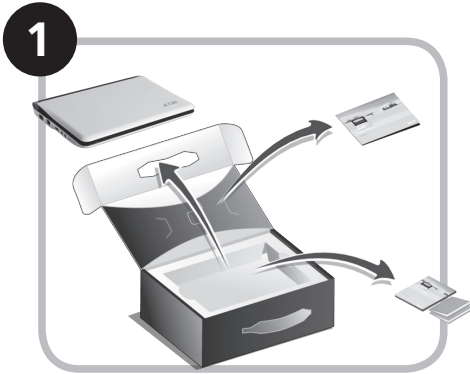
Easy Lai

Easy Lai / Director
Acer Computer (Shanghai) Limited

29 Feb 2008

Date

Just for starters



Illustrations are for reference only. Actual product specifications may vary.

First things first

We would like to thank you for making an Acer notebook your choice for meeting your mobile computing needs.

Your guides

To help you use your Acer notebook, we have designed a set of guides*:

First off, the Quick Guide helps you get started with setting up your computer.

The Application Manual introduces you to the basic features and functions of your new computer. For more on how your computer can help you to be more productive, please refer to the AcerSystem User Guide. This guide contains detailed information on such subjects as system utilities, data recovery, expansion options and troubleshooting. In addition it contains warranty information and the general regulations and safety notices for your notebook. It is available in Portable Document Format (PDF) and comes preloaded on your notebook. Information for your safety and comfort.



Note: Viewing the file requires Adobe Reader. If Adobe Reader is not installed on your computer, clicking on AcerSystem User Guide will run the Adobe Reader setup program first. Follow the instructions on the screen to complete the installation. For instructions on how to use Adobe Reader, access the Help and Support menu.



*** IMPORTANT NOTICE:** Please note that the guides mentioned herein, whether in printed or electronic form, are for your reference only and except as provided in the specific warranty information contained in the AcerSystem User Guide nothing contained in these guides shall constitute a representation or warranty by Acer with regard to the product you purchased. Acer expressly disclaims any liability for errors contained in the guides.


Network configuration

This guide will help you configure your LAN and wireless network settings to enable you to connect to the Internet.

Setting up LAN connection

Simply plug in the LAN cable to the Ethernet (RJ-45) port. Please refer to "Left view" on page 10 for the location of the Ethernet port.

Setting up wireless connection

1. Please switch on the wireless LAN using the switch on the front of your *Aspire one*.
2. Click the  icon on your system tray and choose the wireless access point you want to connect to.



Insert a 3G SIM card





Remove the battery and carefully insert a 3G SIM card into the 3G SIM card slot. Please refer to "Base view" on page 11 for the location of the 3G SIM card slot.

Your *Aspire* one tour

After setting up your computer as illustrated in the Just for Starters section, let us show you around your new Acer notebook.




Top view








#	Icon	Item	Description
1		Acer Crystal Eye webcam	Web camera for video communication
2		Microphone	Internal microphone for sound recording.
3		Display screen	Also called Liquid-Crystal Display (LCD), displays computer output.
4		Bluetooth communication switch/indicator	Enables/disables the Bluetooth function. Indicates the status of Bluetooth communication. (only for certain models)
5		Status indicators	Light-Emitting Diodes (LED) that light up to show the status of the computer's functions and components.
6		Keyboard	For entering data into your computer.
7		Touchpad	Touch-sensitive pointing device which functions like a computer mouse.
8		Power Indicator	Indicates the computer's power status.
9		Click buttons (left, and right)	The left and right buttons function like the left and right mouse buttons.
10		Wireless LAN communication indicator	Indicates the status of wireless LAN communication.
11		Power button/indicator	Turns the computer on and off.

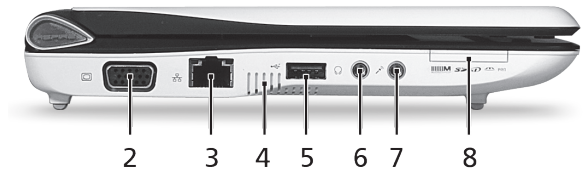
ASPIRE One Series

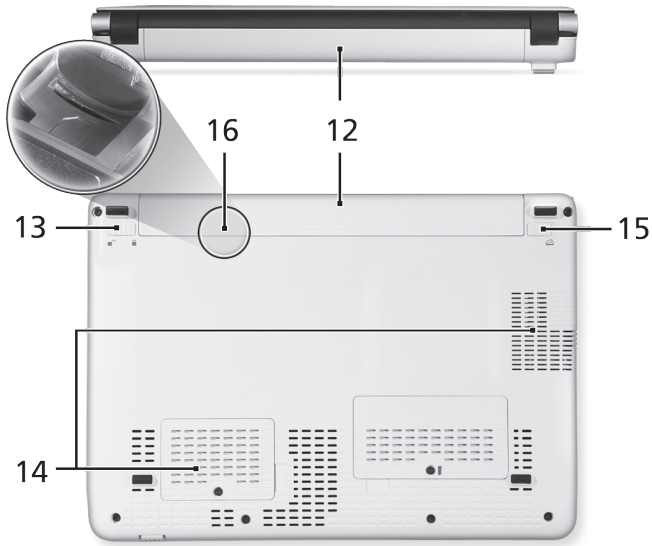
Closed front view

#	Icon	Item	Description
1		Wireless communication switch	Enables/disables the wireless function.

Left view

2		External display (VGA) port	Connects to line-out audio devices (e.g., speakers, headphones).
3		Ethernet (RJ-45) port	Connects to an Ethernet 10/100-based network.
4		Ventilation slots and cooling fan	Enable the computer to stay cool, even after prolonged use. Note: Do not cover or obstruct the opening of the fan.
5		USB 2.0 port	Connects to USB 2.0 devices (e.g., USB mouse).
6		Headphone/speaker/line-out jack	Connects to line-out audio devices (e.g., speakers, headphones).
7		Microphone-in jack	Accepts input from external microphones.
8		Multi-in-one card reader	Accepts Secure Digital (SD), MultiMediaCard (MMC), Memory Stick (MS), Memory Stick PRO (MS PRO), xD-Picture Card (xD). Note: Push to remove/install the card. Only one card can operate at any given time.





Right view

#	Icon	Item	Description
9		USB 2.0 port	Connects to USB 2.0 devices (e.g., USB mouse).
10		DC-in jack	Connects to an AC adapter.
11		Kensington lock slot	Connects to a Kensington-compatible computer security lock.

Rear & Base view

12		Battery bay	Houses the computer's battery pack. Note: The battery shown is for reference only. Your PC may have a different battery, depending on the model purchased.
13		Battery lock	Locks the battery in position.
14		Ventilation slots and cooling fan	Enables the computer to stay cool, even after prolonged use. Note: Do not cover or obstruct the opening of the fan.
15		Battery release latch	Releases the battery for removal.
16		3G SIM card slot	Accepts a 3G SIM card for 3G connectivity. (only for certain models)

