



A Test Lab Techno Corp.

Changan Lab : No. 140 -1, Changan Street, Bade City, Taoyuan County, Taiwan R.O.C.
Tel : +886--271-0188 / Fax : +886-3-271-0190




SAR EVALUATION REPORT

Test Report No.	: 0901FS12-03
Applicant	: Acer Inc.
FCC ID	: HLZUNDP-1C
Product Type	: Notebook Computer
Trade Mark	: acer
Model Number	: KAV10 , Aspire one , AOD 150
Dates of Test	: Jan. 14 ~ Jan. 15, 2009
Test Environment	: Ambient Temperature : 22 ± 2 ° C Relative Humidity : 40 - 70 %
Test Specification	: Standard C95.1-2005 IEEE Std. 1528-2003 2.1093;FCC/OET Bulletin 65 Supplement C [July 2001] FCC : SAR Measurement Requirements For 3-6GHz FCC : SAR Measurement Requirements For 802.11 a/b/g Transmitters FCC : KDB 447498 Mobile Portable RF Exposure
Max. SAR	: 0.040 W/kg Body SAR
Test Lab	: Chang-An Lab



1. The test operations have to be performed with cautious behavior, the test results are as attached.
2. The test results are under chamber environment of A Test Lab Techno Corp. A Test Lab Techno Corp. does not assume responsibility for any conclusions and generalizations drawn from the test results with regard to other specimens or samples.
3. The measurement report has to be written approval of A Test Lab Techno Corp. It may only be reproduced or published in full.


Country Huang 20090304
Measurement Center Manager


Sam Chuang 20090304
Testing Engineer



Contents

1. Description of Equipment Under Test (EUT)	3
2. Other Accessories	5
3. Introduction	6
4. SAR Definition	6
5. SAR Measurement Setup	7
6. System Components	9
6.1 DASY5 E-Field Probe System	9
6.2 Data Acquisition Electronic (DAE) System	12
6.3 Robot	12
6.4 Measurement Server	12
6.5 Device Holder for Transmitters	13
6.6 Oval Flat Phantom - ELI 4.0	14
6.7 Data Storage and Evaluation	14
7. Test Equipment List	17
8. Tissue Simulating Liquids	18
8.1 Ingredients	19
8.2 Recipes	19
8.3 Liquid Confirmation	20
9. Measurement Process	21
9.1 Device and Test Conditions	21
9.2 System Performance Check	22
9.3 Dosimetric Assessment Setup	24
9.4 Spatial Peak SAR Evaluation	26
10. Measurement Uncertainty	27
11. SAR Test Results Summary	29
11.1 802.11b Body SAR _ EUT with Notebook bottom to Phantom (0mm spacing)	29
11.2 802.11g Body SAR _ EUT with Notebook bottom to Phantom (0mm spacing)	30
11.3 Test Setup Photo	31
11.4 Std. C95.1-2005 RF Exposure Limit	32
12. Conclusion	33
13. References	34

Appendix

- Appendix A - System Performance Check
- Appendix B - SAR Measurement Data
- Appendix C - Calibration



1. Description of Equipment Under Test (EUT)

Applicant :

Acer Inc.

8F, 88, Sec.1, Hsin Tai Wu Rd. Hsichih Taipei Hsien 221 Taiwan, R.O.C.

Manufacturer : ATHEROS COMMUNICATIONS, INC.
Manufacturer Address : 5480 Great America Parkway Santa Clara, CA 95054, USA
FCC ID : HLZUNDP-1C
Model Name : Notebook Computer
Trade Mark : acer
Model Number : KAV10 , Aspire one, AOD 150
Test Device : Production Unit
Tx Frequency : 2412 - 2462 MHz (802.11b/802.11g)
Max. RF Conducted Power : 0.128 W (21.06 dBm) 802.11b Avg.
0.123 W (20.91 dBm) 802.11g Avg.
Max. SAR Measurement : 0.040 W/kg Body SAR
HW Version : NA
SW Version : v7.6.0.260
Antenna Type : Internal Type
Antenna Gain : -1.42 dBi
Device Category : Portable
RF Exposure Environment : General Population / Uncontrolled
Power Option : Standard
Application Type : Certification

The laptop is compliant with KDB 447498 Mobile Portable RF Exposure

This wireless portable device has been shown to be capable of compliance for localized specific absorption rate (SAR) for uncontrolled environment / general population exposure limits specified in Standard C95.1-2005 and had been tested in accordance with the measurement procedures specified in IEEE Std. 1528-2003.

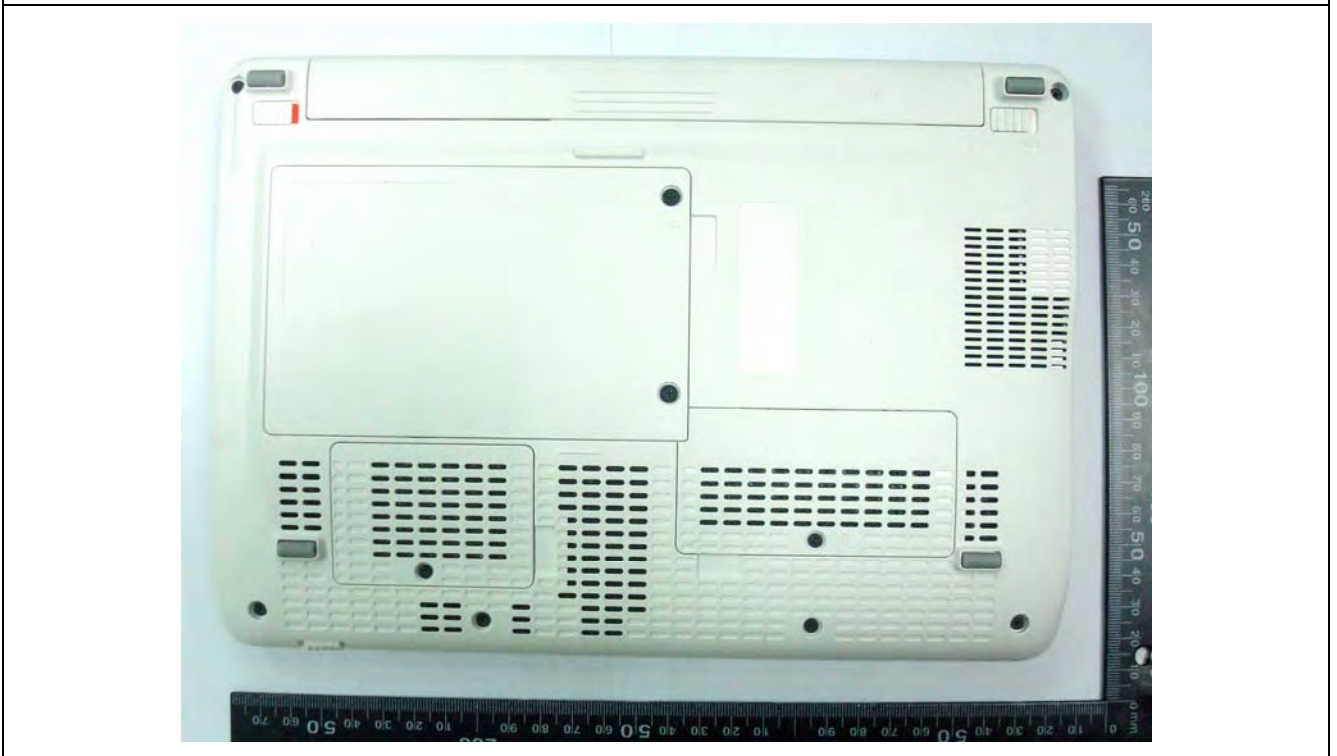


Figure 1. EUT Photo

2. Other Accessories

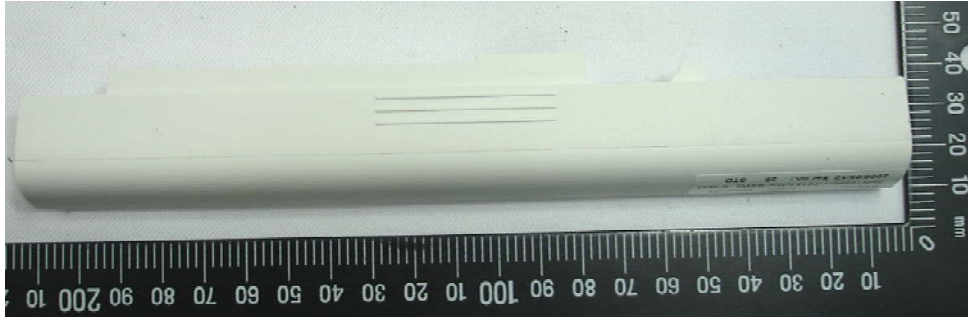


Figure 2. Battery (Li-Ion 11.1V , 2200mAh)



Figure 3. AC Adapter for Base



3. Introduction

The A Test Lab Techno Corp. has performed measurements of the maximum potential exposure to the user of Acer Inc. Trade Mark : acer Model(s) : KAV10 , Aspire one, AOD 150. The test procedures, as described in American National Standards, Institute C95.1-2005 [1] , FCC/OET Bulletin 65 Supplement C [July 2001] were employed and they specify the maximum exposure limit of 1.6mW/g as averaged over any 1 gram of tissue for portable devices being used within 20cm between user and EUT in the uncontrolled environment. A description of the product and operating configuration, detailed summary of the test results, methodology and procedures used in the equipment used are included within this test report.

4. SAR Definition

Specific Absorption Rate (SAR) is defined as the time derivative (rate) of the incremental energy (dw) absorbed by (dissipated in) an incremental mass (dm) contained in a volume element (dv) of a given density (ρ). It is also defined as the rate of RF energy absorption per unit mass at a point in an absorbing body (see Figure 2).

$$\text{SAR} = \frac{d}{dt} \left(\frac{dw}{dm} \right) = \frac{d}{dt} \left(\frac{dw}{\rho dv} \right)$$

Figure 4. SAR Mathematical Equation

SAR is expressed in units of Watts per kilogram (W/kg)

$$\text{SAR} = \frac{\sigma E^2}{\rho}$$

Where :

σ = conductivity of the tissue (S/m)

ρ = mass density of the tissue (kg/m³)

E = RMS electric field strength (V/m)

*Note :

The primary factors that control rate of energy absorption were found to be the wavelength of the incident field in relations to the dimensions and geometry of the irradiated organism, the orientation of the organism in relation to the polarity of field vectors, the presence of reflecting surfaces, and whether conductive contact is made by the organism with a ground plane [2]



5. SAR Measurement Setup

These measurements were performed with the automated near-field scanning system DASY5 from Schmid & Partner Engineering AG (SPEAG). The system is based on a high precision robot (working range greater than 0.9m) which positions the probes with a positional repeatability of better than $\pm 0.02\text{mm}$. Special E- and H-field probes have been developed for measurements close to material discontinuity, the sensors of which are directly loaded with a Schottky diode and connected via highly resistive lines (length = 300mm) to the data acquisition unit.

A cell controller system contains the power supply, robot controller, teach pendant (Joystick), and remote control, is used to drive the robot motors. The Measurement Server is based on a PC/104 CPU board with a 400MHz intel ULV Celeron, 128MB chipdisk and 128MB RAM. The necessary circuits for communication with either the DAE4 (or DAE3) electronic box as well as the 16-bit AD-converter system for optical detection and digital I/O interface are contained on the DASY5 I/O-board, which is directly connected to the PC/104 bus of the CPU board. The PC consists of the Intel Core(TM)2 CPU @1.86GHz computer with Windows XP system and SAR Measurement Software DASY5, Post Processor SEMCAD, monitor, mouse, and keyboard. The Staubli Robot is connected to the cell controller to allow software manipulation of the robot. A data acquisition electronic (DAE) circuit performs the signal amplification, signal multiplexing, AD-conversion, offset measurements, mechanical surface detection, collision detection...etc. is connected to the Electro-optical converter (EOC). The EOC performs the conversion from the optical into digital electric signal of the DAE and transfers data to the Measurement Server.

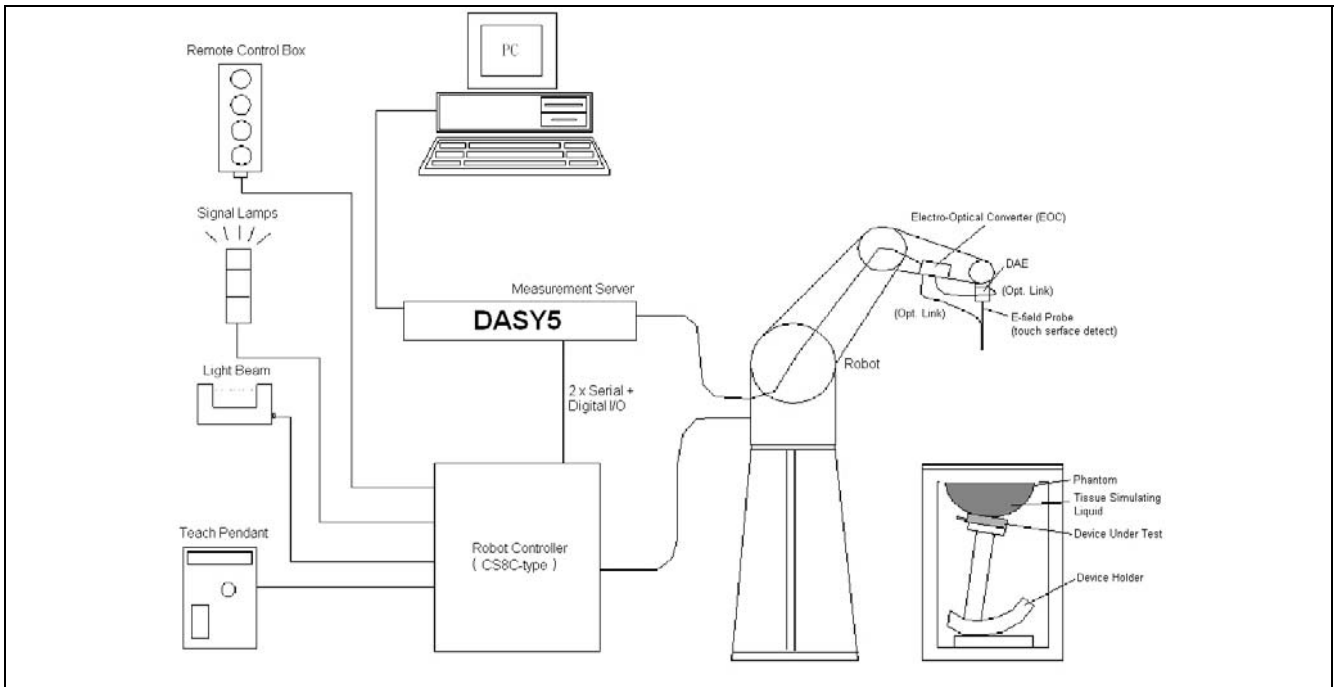


Figure 5. SAR Lab Test Measurement Setup

The DAE4 (or DAE3) consists of a highly sensitive electrometer-grade preamplifier with auto-zeroing, a channel and gain-switching multiplexer, a fast 16 bit AD-converter and a command decoder and control logic unit. Transmission to the PC-card is accomplished through an optical downlink for data and status information and an optical uplink for commands and clock lines. The mechanical probe mounting device includes two different sensor systems for frontal and sidewise probe contacts. They are also used for mechanical surface detection and probe collision detection. The robot uses its own controller with a built in VME-bus computer. The system is described in detail in [3] .



6. System Components

6.1 DASYS E-Field Probe System

The SAR measurements were conducted with the dosimetric probe (manufactured by SPEAG), designed in the classical triangular configuration [3] and optimized for dosimetric evaluation. The probe is constructed using the thick film technique; with printed resistive lines on ceramic substrates. The probe is equipped with an optical multi-fiber line ending at the front of the probe tip. It is connected to the EOC box on the robot arm and provides an automatic detection of the phantom surface. Half of the fibers are connected to a pulsed infrared transmitter, the other half to a synchronized receiver. As the probe approaches the surface, the reflection from the surface produces a coupling from the transmitting to the receiving fibers. This reflection increases first during the approach, reaches maximum and then decreases. If the probe is flatly touching the surface, the coupling is zero. The distance of the coupling maximum to the surface is independent of the surface reflectivity and largely independent of the surface to probe angle. The DASYS software reads the reflection during a software approach and looks for the maximum using a 2nd order fitting. The approach is stopped when reaching the maximum.

6.1.1 E-Field Probe Specification

Construction	<p>Symmetrical design with triangular core</p> <p>Built-in optical fiber for surface detection System</p> <p>Built-in shielding against static charges</p> <p>PEEK enclosure material</p> <p>(resistant to organic solvents, e.q., glycol)</p>
Calibration	<p>In air from 10 MHz to 6 GHz</p> <p>In brain and muscle simulating tissue at frequencies of 450MHz, 900MHz, 1800MHz, 2000MHz, 1950MHz, 2300MHz, 2450MHz, 2600MHz, 3500MHz, 5200MHz, 5500MHz and 5800MHz (accuracy $\pm 8\%$)</p> <p>Calibration for other liquids and frequencies upon request</p>
Frequency	<p>10 MHz to > 6 GHz; Linearity: ± 0.2 dB</p> <p>(30 MHz to 3 GHz)</p>
Directivity	<p>± 0.3 dB in brain tissue (rotation around probe axis)</p> <p>± 0.5 dB in brain tissue (rotation normal probe axis)</p>
Dynamic Range	<p>10μW/g to > 100mW/g; Linearity: ± 0.2dB</p>
Surface Detection	<p>± 0.2 mm repeatability in air and clear liquids over diffuse reflecting surface</p>
Dimensions	<p>Overall length: 330mm</p> <p>Tip length: 20mm</p> <p>Body diameter: 12mm</p> <p>Tip diameter: 2.5mm</p> <p>Distance from probe tip to dipole centers: 1.0mm</p>
Application	<p>General dosimetry up to 6GHz</p> <p>Compliance tests of mobile phones</p> <p>Fast automatic scanning in arbitrary phantoms</p>



Figure 6.
E-field Probe



Figure 7.
Probe setup on robot



6.1.2 E-Field Probe Calibration

Each probe is calibrated according to a dosimetric assessment procedure described in [4] with accuracy better than $\pm 10\%$. The spherical isotropy was evaluated with the procedure described in [5] and found to be better than $\pm 0.25\text{dB}$. The sensitivity parameters (NormX, NormY, and NormZ), the diode compression parameter (DCP) and the conversion factor (ConvF) of the probe are tested.

The free space E-field from amplified probe outputs is determined in a test chamber. This is performed in a TEM cell for frequencies below 1GHz, and in a wave guide above 1GHz for free space. For the free space calibration, the probe is placed in the volumetric center of the cavity and at the proper orientation with the field. The probe is then rotated 360 degrees.

E-field temperature correlation calibration is performed in a flat phantom filled with the appropriate simulated brain tissue. The measured free space E-field in the medium correlates to temperature rise in a dielectric medium. For temperature correlation calibration a RF transparent thermistor-based temperature probe is used in conjunction with the E-field probe.

$$\text{SAR} = C \frac{\Delta T}{\Delta t}$$

Where :

Δt = Exposure time (30 seconds),

C = Heat capacity of tissue (head or body),

ΔT = Temperature increase due to RF exposure.

Or

$$\text{SAR} = \frac{|E|^2 \sigma}{\rho}$$

Where :

σ = Simulated tissue conductivity,

ρ = Tissue density (kg/m^3).



6.2 Data Acquisition Electronic (DAE) System

Cell Controller

Processor : Intel Core(TM)2 CPU
Clock Speed : @ 1.86GHz
Operating System : Windows XP Professional

Data Converter

Features : Signal Amplifier, multiplexer, A/D converter, and control logic
Software : DASY5 v5.0 (Build 120) & SEMCAD X Version 13.2 Build 87
Connecting Lines : Optical downlink for data and status info
Optical uplink for commands and clock

6.3 Robot

Positioner : Stäubli Unimation Corp. Robot Model: TX90XL
Repeatability : ± 0.02 mm
No. of Axis : 6

6.4 Measurement Server

Processor : PC/104 with a 400MHz intel ULV Celeron
I/O-board : Link to DAE4(or DAE3)
16-bit A/D converter for surface detection system
Digital I/O interface
Serial link to robot
Direct emergency stop output for robot

6.5 Device Holder for Transmitters

In combination with the SAM Twin Phantom V4.0, the Mounting Device (POM) enables the rotation of the mounted transmitter in spherical coordinates whereby the rotation points is the ear opening. The devices can be easily, accurately, and repeat ably positioned according to the IEEE SCC34-SC2 and CENELEC specifications. The device holder can be locked at different phantom locations (left head, right head, and flat phantom).

*Note : A simulating human hand is not used due to the complex anatomical and geometrical structure of the hand that may produced infinite number of configurations [6] . To produce the worst-case condition (the hand absorbs antenna output power), the hand is omitted during the tests.

Larger DUT cannot be tested using this device holder. Instead a support of bigger polystyrene cubes and thin polystyrene plates is used to position the DUT in all relevant positions to find and measure spots with maximum SAR values. Therefore those devices are normally only tested at the flat part of the SAM.

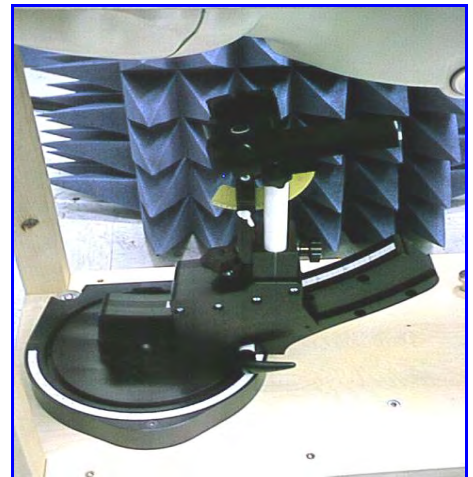


Figure 8. Device Holder

6.6 Oval Flat Phantom - ELI 4.0

The shell corresponds to the specifications of the Specific Anthropomorphic Mannequin (Oval Flat) phantom defined in IEEE 1528-2003, CENELEC 50361 and IEC 62209. It enables the dosimetric evaluation of wireless portable device usage as well as body mounted usage at the flat phantom region. A cover prevents evaporation of the liquid. Reference markings on the phantom allow the complete setup of all predefined phantom positions and measurement grids by manually teaching three points with the robot.

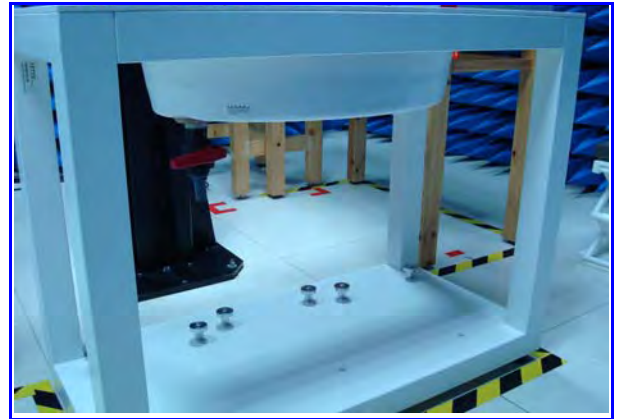


Figure 9. Oval Flat Phantom

Shell Thickness	2 ±0.2 mm
Filling Volume	Approx. 30 liters
Dimensions	190×600×400 mm (H×L×W)

Table 1. Specification of ELI 4.0

6.7 Data Storage and Evaluation

6.7.1 Data Storage

The DASY5 software stores the assessed data from the data acquisition electronics as raw data (in microvolt readings from the probe sensors), together with all the necessary software parameters for the data evaluation (probe calibration data, liquid parameters and device frequency and modulation data) in measurement files with the extension DA5. The post processing software evaluates the desired unit and format for output each time the data is visualized or exported. This allows verification of the complete software setup even after the measurement and allows correction of erroneous parameter settings. For example, if a measurement has been performed with an incorrect crest factor parameter in the device setup, the parameter can be corrected afterwards and the data can be reevaluated.



6.7.2 Data Evaluation

The DASY5 post processing software (SEMCAD) automatically executes the following procedures to calculate the field units from the microvolt readings at the probe connector. The parameters used in the evaluation are stored in the configuration modules of the software :

Probe parameters :	- Sensitivity	Norm _i , ai0, ai1, ai2
	- Conversion factor	ConvFi
	- Diode compression point	dcp _i
Device parameters :	- Frequency	f
	- Crest factor	cf
Media parameters :	- Conductivity	σ
	- Density	ρ

These parameters must be set correctly in the software. They can be found in the component documents or they can be imported into the software from the configuration files issued for the DASY components. In the direct measuring mode of the multimeter option, the parameters of the actual system setup are used. In the scan visualization and export modes, the parameters stored in the corresponding document files are used.

The first step of the evaluation is a linearization of the filtered input signal to account for the compression characteristics of the detector diode. The compensation depends on the input signal, the diode type and the DC-transmission factor from the diode to the evaluation electronics. If the exciting field is pulsed, the crest factor of the signal must be known to correctly compensate for peak power. The formula for each channel can be given as :

$$V_i = U_i + U_i^2 \cdot \frac{cf}{dcp_i}$$

- with V_i = compensated signal of channel i (i = x, y, z)
 U_i = input signal of channel i (i = x, y, z)
cf = crest factor of exciting field (DASY parameter)
dcp_i = diode compression point (DASY parameter)

From the compensated input signals the primary field data for each channel can be evaluated :

E-field probes :

$$E_i = \sqrt{\frac{V_i}{Norm_i \cdot ConvF}}$$

H-field probes :

$$H_i = \sqrt{V_i} \cdot \frac{a_{i0} + a_{i1}f + a_{i2}f^2}{f}$$



- with V_i = compensated signal of channel i (i = x, y, z)
 Norm_i = sensor sensitivity of channel i (i = x, y, z)
 $\mu\text{V}/(\text{V/m})^2$ for E-field Probes
 ConvF = sensitivity enhancement in solution
 a_{ij} = sensor sensitivity factors for H-field probes
 f = carrier frequency [GHz]
 E_i = electric field strength of channel i in V/m
 H_i = magnetic field strength of channel i in A/m

The RSS value of the field components gives the total field strength (Hermitian magnitude) :

$$E_{tot} = \sqrt{E_x^2 + E_y^2 + E_z^2}$$

The primary field data are used to calculate the derived field units.

$$SAR = E_{tot}^2 \cdot \frac{\sigma}{\rho \cdot 1000}$$

- with SAR = local specific absorption rate in mW/g
 E_{tot} = total field strength in V/m
 σ = conductivity in [mho/m] or [Siemens/m]
 ρ = equivalent tissue density in g/cm^3

* Note : that the density is set to 1, to account for actual head tissue density rather than the density of the tissue simulating liquid.

The power flow density is calculated assuming the excitation field to be a free space field.

$$P_{pwe} = \frac{E_{tot}^2}{3770} \quad \text{or} \quad P_{pwe} = \frac{H_{tot}^2}{37.7}$$

- with P_{pwe} = equivalent power density of a plane wave in mW/cm^2
 E_{tot} = total electric field strength in V/m
 H_{tot} = total magnetic field strength in A/m



7. Test Equipment List

Manufacturer	Name of Equipment	Type/Model	Serial Number	Calibration	
				Last Cal.	Due Date
SPEAG	Dosimetric E-Field Probe	EX3DV4	3578	May. 20, 2008	May. 20, 2009
SPEAG	2450MHz System Validation Kit	D2450V2	712	Jan. 30, 2008	Jan. 30, 2009
SPEAG	Data Acquisition Electronics	DAE4	779	Nov. 11, 2008	Nov. 11, 2009
SPEAG	Device Holder	N/A	N/A	NCR	NCR
SPEAG	Phantom ELI 4.0	QD OVA 001 BB	1036	NCR	NCR
SPEAG	Robot	Staubli TX90XL	F07/564ZA1/C/01	NCR	NCR
SPEAG	Software	DASY5 V5.0 Build 119	N/A	NCR	NCR
SPEAG	Software	SEMCAD V13.2 Build 87	N/A	NCR	NCR
SPEAG	Measurement Server	SE UMS 011 AA	1025	NCR	NCR
Agilent	ENA Series Network Analyzer	E5071B	MY42402996	Nov. 14, 2008	Nov. 14, 2009
Agilent	Dielectric Probe Kit	85070C	US99360094	NCR	NCR
R&S	Power Sensor	NRP-Z22	100179	Apr. 23, 2008	Apr. 23, 2009
Agilent	Signal Generator	E8257D	MY44320425	Jul. 03, 2008	Jul. 03, 2009
Agilent	Dual Directional Coupler	778D	50334	NCR	NCR
Mini-Circuits	Power Amplifier	ZHL-42W-SMA	D111103#5	NCR	NCR
Mini-Circuits	Power Amplifier	ZVE-8G-SMA	D042005 671800514	NCR	NCR

Table 2. Test Equipment List



8. Tissue Simulating Liquids

The mixture is calibrated to obtain proper dielectric constant (permittivity) and conductivity of the tissue.

The dielectric parameters of the liquids were verified prior to the SAR evaluation using an 85070C Dielectric Probe Kit and an 8720ES Network Analyzer.

IEEE SCC-34/SC-2 in 1528 recommended Tissue Dielectric Parameters

The head tissue dielectric parameters recommended by the IEEE SCC-34/SC-2 in 1528 have been incorporated in the following table. These head parameters are derived from planar layer models simulating the highest expected SAR for the dielectric properties and tissue thickness variations in human head. Other head and body tissue parameters that have not been specified in 1528 are derived from the tissue dielectric parameters computed from the 4-Cole-Cole equation and extrapolated according to the head parameter specified in 1528.

Target Frequency (MHz)	Head		Body	
	ϵ_r	σ (S/m)	ϵ_r	σ (S/m)
150	52.3	0.76	61.9	0.80
300	45.3	0.87	58.2	0.92
450	43.5	0.87	56.7	0.94
835	41.5	0.90	55.2	0.97
900	41.5	0.97	55.0	1.05
915	41.5	0.98	55.0	1.06
1450	40.5	1.20	54.0	1.30
1610	40.3	1.29	53.8	1.40
1800 - 2000	40.0	1.40	53.3	1.52
2300	-	-	52.9	1.80
2450	39.2	1.80	52.7	1.95
2600	-	-	52.5	2.16
3000	38.5	2.40	52.0	2.73
5200	36.0	4.66	49.0	5.30
5200	35.6	5.0	48.6	5.6
5800	35.3	5.27	48.2	6.00

(ϵ_r = relative permittivity, σ = conductivity and $\rho = 1000 \text{ kg/m}^3$)

Table 3. Tissue dielectric parameters for head and body phantoms



8.1 Ingredients

The following ingredients are used:

- Water: deionized water (pure H₂O), resistivity $\geq 16 \text{ M } \Omega$ -as basis for the liquid
- Sugar: refined white sugar (typically 99.7 % sucrose, available as crystal sugar in food shops)
-to reduce relative permittivity
- Salt: pure NaCl -to increase conductivity
- Cellulose: Hydroxyethyl-cellulose, medium viscosity (75-125 mPa.s, 2% in water, 20 °C), CAS # 54290 -to increase viscosity and to keep sugar in solution.
- Preservative: Preventol D-7 Bayer AG, D-51368 Leverkusen, CAS # 55965-84-9 -to prevent the spread of bacteria and molds
- DGBE: Diethylenglycol-monobutyl ether (DGBE), Fluka Chemie GmbH, CAS # 112-34-5 -to reduce relative permittivity

8.2 Recipes

The following tables give the recipes for tissue simulating liquids to be used in different frequency bands.

Note: The goal dielectric parameters (at 22 °C) must be achieved within a tolerance of $\pm 5\%$ for ϵ and $\pm 5\%$ for σ .

Liquid type	MSL 2450-B	
Ingredient	Weight (g)	Weight (%)
Water	686.35	68.64
DGBE	313.65	31.37
Salt	-	0.00
Total amount	1,000.00	100.00
Goal dielectric parameters		
Frequency [MHz]	2450	
Relative Permittivity	52.7	
Conductivity [S/m]	1.95	

8.3 Liquid Confirmation

8.3.1 Parameters

Liquid Verify								
Ambient Temperature : 22 ± 2 °C ; Relative Humidity : 40 -70%								
Liquid Type	Frequency	Temp (°C)	Parameters	Target Value	Measured Value	Deviation (%)	Limit (%)	Measured Date
2450MHz Body	2450MHz	22.0	ϵ_r	52.7	53.7	1.90	± 5	Jan. 14, 2009
			σ	1.95	1.91	-2.05	± 5	

Table 4. Measured Tissue dielectric parameters for head and body phantoms

8.3.2 Liquid Depth

The liquid level was during measurement 15cm ±0.5cm.

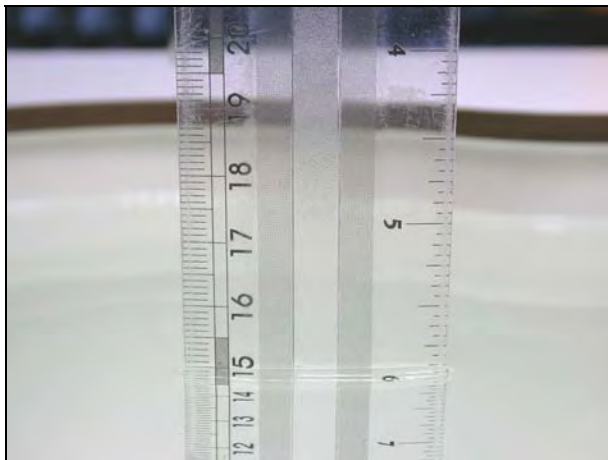


Figure 10. Head-Tissue-Simulating-Liquid



Figure 11. Body-Tissue-Simulating-Liquid



9. Measurement Process

9.1 Device and Test Conditions

The Test Device was provided by Acer Inc. for this evaluation. The spatial peak SAR values were assessed for the lowest, middle and highest channels defined by below table. The antenna(s), battery and accessories shall be those specified by the manufacturer. The battery shall be fully charged before each measurement and there shall be no external connections.

Frequency & Conducted power list

Usage	Operates with a built-in test mode by client				
Simulating human Head/Body	Body				
EUT Power Source	Li-Ion Battery				
Band	Rate	CH	Frequency (MHz)	Conducted power (dBm)	
				Before SAR Test	After SAR Test
802.11 b	1 M	1	2412	19.96	19.92
		6	2437	20.95	20.91
		11	2462	20.57	20.53
	11 M	1	2412	20.07	20.06
		6	2437	20.91	20.88
		11	2462	21.06	21.03
802.11 g	6 M	1	2412	20.73	20.70
		6	2437	20.67	20.65
		11	2462	20.08	20.05
	54 M	1	2412	20.91	21.89
		6	2437	20.85	20.83
		11	2462	20.44	20.42

9.2 System Performance Check

9.2.1 Symmetric Dipoles for System Validation

Construction	Symmetrical dipole with 1/4 balun enables measurement of feed point impedance with NWA matched for use near flat phantoms filled with head simulating solutions Includes distance holder and tripod adaptor Calibration Calibrated SAR value for specified position and input power at the flat phantom in head simulating solutions.
Frequency	450, 900, 1800, 2000, 2450, 5200MHz, 5800MHz
Return Loss	> 20 dB at specified validation position
Power Capability	> 100 W (f < 1GHz); > 40 W (f > 1GHz)
Options	Dipoles for other frequencies or solutions and other calibration conditions are available upon request
Dimensions	D450V2 : dipole length 270 mm; overall height 330 mm D900V2 : dipole length 149 mm; overall height 330 mm D1800V2 : dipole length 72 mm; overall height 300 mm D2000V2 : dipole length 65 mm; overall height 300 mm D2450V2 : dipole length 51.5 mm; overall height 300 mm D5GHzV2 : dipole length 20.6 mm; overall height 450 mm



Figure 12. Validation Kit



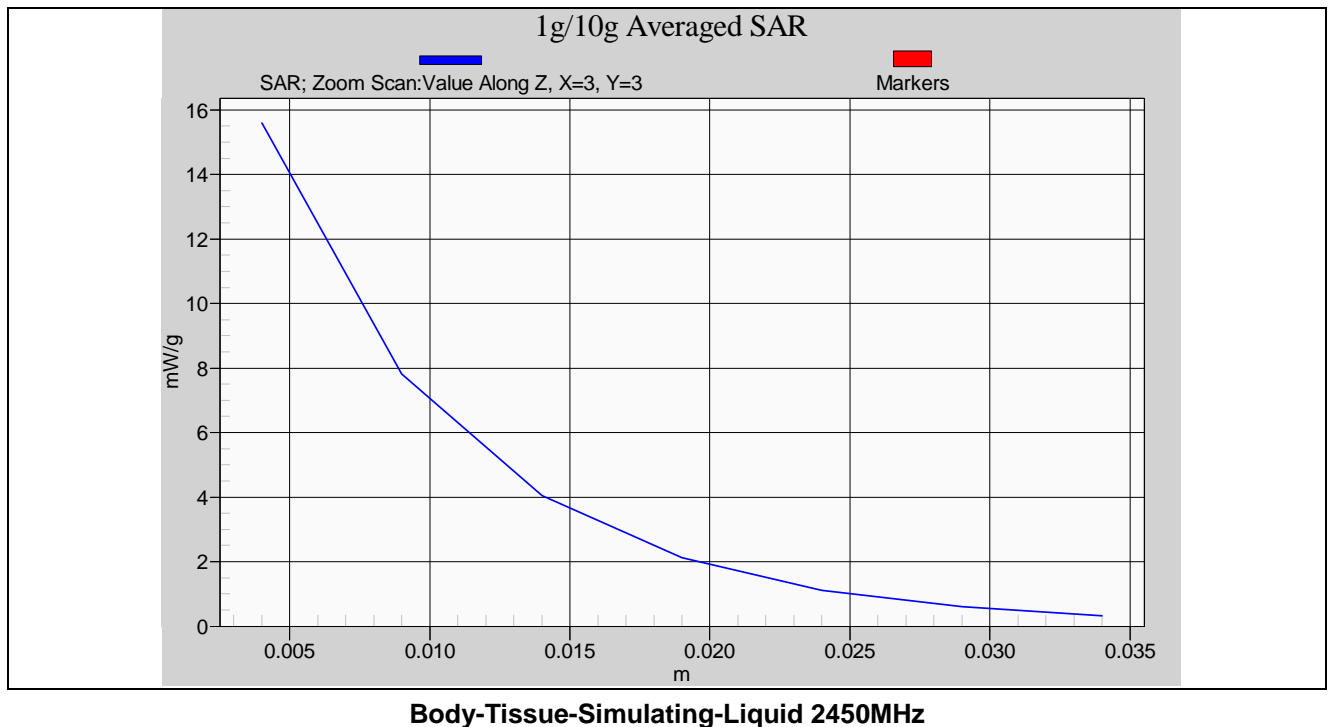
9.2.2 Validation

Prior to the assessment, the system validation kit was used to test whether the system was operating within its specifications of $\pm 7\%$. The validation was performed at 2450MHz.

Validation kit		Mixture Type	SAR _{1g} [mW/g]		SAR _{10g} [mW/g]	Date of Calibration	
D2450V2-SN712		Body	53.6		24.8	Jan. 30, 2008	
Frequency (MHz)	Power	SAR _{1g} (mW/g)	SAR _{10g} (mW/g)	Drift (dB)	Difference percentage		Date
					1g	10g	
2450 (Body)	250mW	13.5	6.19	0.062	0.7 %	-0.2 %	Jan. 14, 2009
	Normalize to 1 Watt	54	24.76				

Detail results see Appendix A.

Z-axis Plot of System Performance Check





9.3 Dosimetric Assessment Setup

9.3.1 Body-Worn Test Position

Body-Worn Configuration

Body-worn operating configurations should be tested with the belt-clips and holsters attached to the device and positioned against a flat phantom in normal use configurations. Devices with a headset output should be tested with a headset connected to the device.

Body-worn accessories may not always be supplied or available as options for some devices that are intended to be authorized for body-worn use. A separation distance of 1.5 cm between the back of the device and a flat phantom is recommended for testing body-worn SAR compliance under such circumstances.

For this test :

- The EUT is placed into the holster/belt clip and the holster is positioned against the surface of the phantom in a normal operating position.
- Since this EUT doesn't supply any body-worn accessory to the end user, a distance of 2 mm was tested to confirm the necessary "minimum SAR separation distance".
(* Note : This distance includes the 2 mm phantom shell thickness.)



9.3.2 Measurement Procedures

The evaluation was performed with the following procedures :

- Surface Check : A surface check job gathers data used with optical surface detection. It determines the distance from the phantom surface where the reflection from the optical detector has its peak. Any following measurement jobs using optical surface detection will then rely on this value. The surface check performs its search a specified number of times, so that the repeatability can be verified. The probe tip distance is 1.3mm to phantom inner surface during scans.
- Reference : The reference job measures the field at a specified reference position, at 4 mm from the selected section's grid reference point.
- Area Scan : The area scan is used as a fast scan in two dimensions to find the area of high field values, before doing a finer measurement around the hot spot. The sophisticated interpolation routines can find the maximum locations even in relatively coarse grids. When an area scan has measured all reachable points, it computes the field maxima found in the scanned area, within a range of the global maximum. Any following zoom scan within the same procedure will then perform fine scans around these maxima. The area covered the entire dimension of the EUT and the horizontal grid spacing was 15 mm x 15 mm.
- Zoom Scan : Zoom scans are used to assess the highest averaged SAR for cubic averaging volumes with 1 g and 10 g of simulated tissue. The zoom scan measures 5 x 5 x 7 points in a 32 x 32 x 30 mm cube whose base faces are centered around the maxima returned from a preceding area scan within the same procedure.
- Drift : The drift job measures the field at the same location as the most recent reference job within the same procedure, with the same settings. The drift measurement gives the field difference in dB from the last reference measurement. Several drift measurements are possible for each reference measurement. This allows monitoring of the power drift of the device in the batch process. If the value changed by more than 5%, the evaluation was repeated.



9.4 Spatial Peak SAR Evaluation

The DASY5 software includes all numerical procedures necessary to evaluate the spatial peak SAR values. Based on the Draft: SCC-34, SC-2, WG-2 - Computational Dosimetry, IEEE P1529/D0.0 (Draft Recommended Practice for Determining the Spatial-Peak Specific Absorption Rate (SAR) Associated with the Use of Wireless Handsets - Computational Techniques), a new algorithm has been implemented. The spatial-peak SAR can be computed over any required mass.

The base for the evaluation is a “cube” measurement in a volume of $(32 \times 32 \times 30) \text{mm}^3$ ($5 \times 5 \times 7$ points). The measured volume must include the 1g and 10g cubes with the highest averaged SAR values. For that purpose, the center of the measured volume is aligned to the interpolated peak SAR value of a previously performed area scan. If the 10g cube or both cubes are not entirely inside the measured volumes, the system issues a warning regarding the evaluated spatial peak values within the Postprocessing engine (SEMCAD). This means that if the measured volume is shifted, higher values might be possible. To get the correct values you can use a finer measurement grid for the area scan. In complicated field distributions, a large grid spacing for the area scan might miss some details and give an incorrectly interpolated peak location.

The entire evaluation of the spatial peak values is performed within the Postprocessing engine (SEMCAD). The system always gives the maximum values for the 1g and 10g cubes. The algorithm to find the cube with highest averaged SAR is divided into three stages:

Interpolation and Extrapolation

The probe is calibrated at the center of the dipole sensors which is located 1 to 2.7mm away from the probe tip. During measurements, the probe stops shortly above the phantom surface, depending on the probe and the surface detecting system. Both distances are included as parameters in the probe configuration file. The software always knows exactly how far away the measured point is from the surface. As the probe cannot directly measure at the surface, the values between the deepest measured point and the surface must be extrapolated.

In DASY5, the choice of the coordinate system defining the location of the measurement points has no influence on the uncertainty of the interpolation, Maxima Search and SAR extrapolation routines. The interpolation, Maxima Search and extrapolation routines are all based on the modified Quadratic Shepard's method [7].



10. Measurement Uncertainty

Measurement uncertainties in SAR measurements are difficult to quantify due to several variables including biological, physiological, and environmental. However, we estimate the measurement uncertainties in SAR to be less than $\pm 21.5\%$ [8] .

According to Std. C95.3 [9] , the overall uncertainties are difficult to assess and will vary with the type of meter and usage situation. However, accuracy's of ± 1 to 3 dB can be expected in practice, with greater uncertainties in near-field situations and at higher frequencies (shorter wavelengths), or areas where large reflecting objects are present. Under optimum measurement conditions, SAR measurement uncertainties of at least ± 2 dB can be expected.

According to CENELEC [10] , typical worst-case uncertainty of field measurements is ± 5 dB. For well-defined modulation characteristics the uncertainty can be reduced to ± 3 dB.



Uncertainty Component	Uncertainty Value	Probability Distribution	Divisor	c _i (1g)	c _i (10g)	Standard Uncertainty ±1% (1-g)	Standard Uncertainty ±1% (10-g)	v _i or V _{eff}
Measurement System								
Probe Calibration (k=1)	4.8	Normal	1	1	1	4.8	4.8	∞
Axial Isotropy	4.7	Rectangular	$\sqrt{3}$	$\sqrt{0.5}$	$\sqrt{0.5}$	1.9	1.9	∞
Hemispherical Isotropy	9.6	Rectangular	$\sqrt{3}$	$\sqrt{0.5}$	$\sqrt{0.5}$	3.9	3.9	∞
Boundary Effect	0.8	Rectangular	$\sqrt{3}$	1	1	0.5	0.5	∞
Linearity	4.7	Rectangular	$\sqrt{3}$	1	1	2.7	2.7	∞
System Detection Limit	1.0	Rectangular	$\sqrt{3}$	1	1	0.6	0.6	∞
Readout Electronics	1.0	Normal	1	1	1	1.0	1.0	∞
Response Time	1.0	Rectangular	$\sqrt{3}$	1	1	0.6	0.6	∞
Integration Time	1.9	Rectangular	$\sqrt{3}$	1	1	1.1	1.1	∞
RF Ambient Conditions	3.0	Rectangular	$\sqrt{3}$	1	1	1.7	1.7	∞
Probe Positioner Mechanical Tolerance	1.4	Rectangular	$\sqrt{3}$	1	1	0.8	0.8	∞
Probe Positioning with respect to Phantom Shell	2.9	Rectangular	$\sqrt{3}$	1	1	1.7	1.7	∞
Extrapolation, interpolation and integration Algorithms for Max. SAR Evaluation	4.5	Rectangular	$\sqrt{3}$	1	1	2.6	2.6	∞
Test sample Related								
Test sample Positioning	2.9	Normal	1	1	1	2.9	2.9	145
Device Holder Uncertainty	3.6	Normal	1	1	1	3.6	3.6	5
Output Power Variation – SAR drift measurement	5.0	Rectangular	$\sqrt{3}$	1	1	2.9	2.9	∞
Phantom and Tissue Parameters								
Phantom Uncertainty (shape and thickness tolerances)	4.0	Rectangular	$\sqrt{3}$	1	1	2.3	2.3	∞
Liquid Conductivity – deviation from target values	5.0	Rectangular	$\sqrt{3}$	0.64	0.43	1.8	1.2	∞
Liquid Conductivity – measurement uncertainty	5.0	Normal	1	0.64	0.43	3.2	2.2	∞
Liquid Permittivity - deviation from target values	5.0	Rectangular	$\sqrt{3}$	0.6	0.49	1.7	1.4	∞
Liquid Permittivity - measurement uncertainty	5.0	Normal	1	0.6	0.49	3.0	2.5	∞
Combined standard uncertainty		RSS				11.2	10.7	388
Expanded uncertainty (95% CONFIDENCE LEVEL)		k=2				22.4	21.5	

Table 5. Uncertainty Budget of DASY



11. SAR Test Results Summary

11.1 802.11b Body SAR _ EUT with Notebook bottom to Phantom (0mm spacing)

Ambient :

Temperature (°C) :

22 ± 2

Relative HUMIDITY (%) :

40 - 70

Liquid :

Mixture Type :

MSL2450

Liquid Temperature (°C) :

22.0

Depth of liquid (cm) :

15

Measurement :

Crest Factor :

1

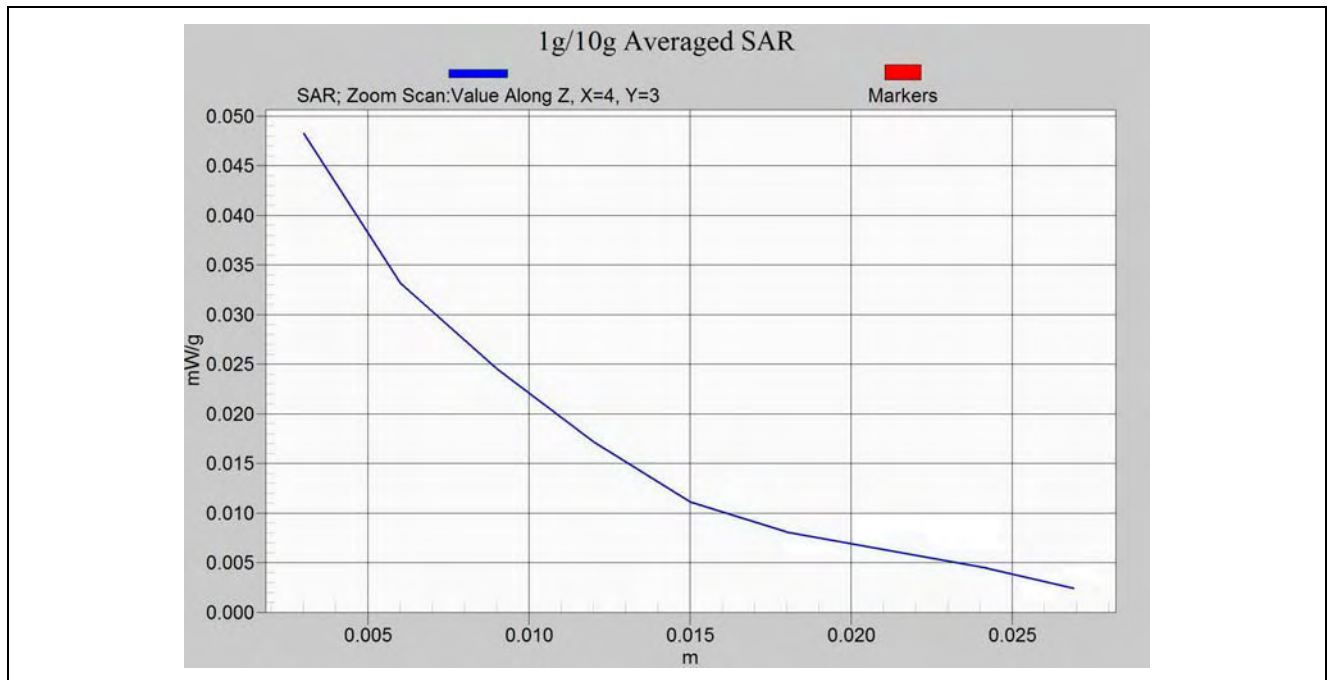
Probe S/N :

3578

Frequency (MHz)	Data Rate	Phantom Position	EUT to Phantom Setup	SAR _{1g} [mW/g]	Power Drift (dB)	Amb. Temp.	Remark
2412	11 M	Flat	Bottom	0.008	0.150	22.0	—
2437	11 M	Flat	Bottom	0.040	-0.168	22.0	—
2462	11 M	Flat	Bottom	0.031	0.046	22.0	—
Std. C95.1-2005 - Safety Limit Spatial Peak Uncontrolled Exposure/General Population				1.6 W/kg (mW/g) Averaged over 1 gram			

Detail results see Appendix B.

Z-axis Plot of SAR Measurement



SAR Measurement (Flat Section) _ 802.11b 11M / CH06



11.2 802.11g Body SAR _ EUT with Notebook bottom to Phantom (0mm spacing)

Ambient :

Temperature (°C) : 22 ± 2 Relative HUMIDITY (%) : 40 - 70

Liquid :

Mixture Type : MSL2450 Liquid Temperature (°C) : 22.0
 Depth of liquid (cm) : 15

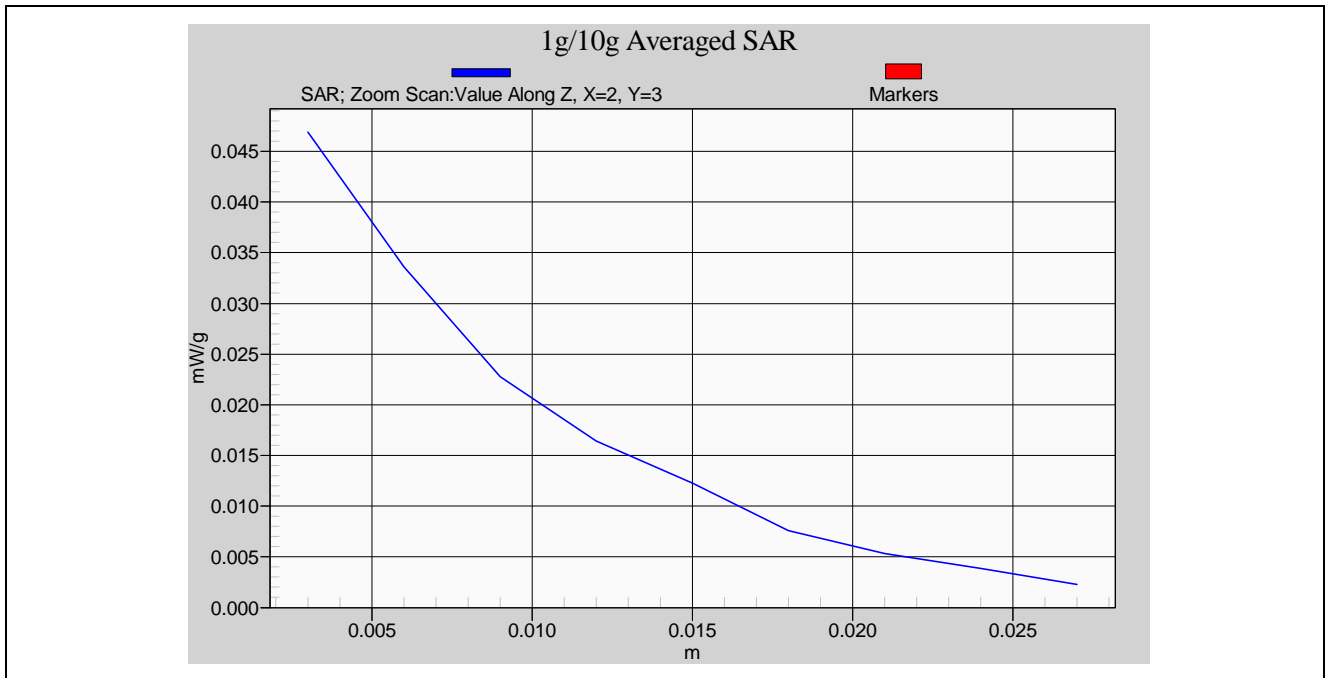
Measurement :

Crest Factor : 1 Probe S/N : 3578

Frequency (MHz)	Data Rate	Phantom Position	EUT to Phantom Setup	SAR _{1g} [mW/g]	Power Drift (dB)	Amb. Temp.	Remark
2412	54 M	Flat	Bottom	0.038	-0.113	22.0	—
2437	54 M	Flat	Bottom	0.007	0.015	22.0	—
2462	54 M	Flat	Bottom	0.016	0.136	22.0	—
Std. C95.1-2005 - Safety Limit Spatial Peak Uncontrolled Exposure/General Population				1.6 W/kg (mW/g) Averaged over 1 gram			

Detail results see Appendix B.

Z-axis Plot of SAR Measurement



SAR Measurement (Flat Section) _ 802.11g 54M / CH01

11.3 Test Setup Photo

11.3.1 EUT with Notebook bottom to Phantom (0mm spacing)



Figure 13. Body SAR Test Setup (Flat Section)



11.4 Std. C95.1-2005 RF Exposure Limit

Human Exposure	Population Uncontrolled Exposure (W/kg) or (mW/g)	Occupational Controlled Exposure (W/kg) or (mW/g)
Spatial Peak SAR* (head)	1.60	8.00
Spatial Peak SAR** (Whole Body)	0.08	0.40
Spatial Peak SAR*** (Partial-Body)	1.60	8.00
Spatial Peak SAR**** (Hands / Feet / Ankle / Wrist)	4.00	20.00

Table 6. Safety Limits for Partial Body Exposure

Notes :

- * The Spatial Peak value of the SAR averaged over any 1 gram of tissue. (defined as a tissue volume in the shape of a cube) and over the appropriate averaging time.
- ** The Spatial Average value of the SAR averaged over the whole - body.
- *** The Spatial Average value of the SAR averaged over the partial - body.
- **** The Spatial Peak value of the SAR averaged over any 10 grams of tissue. (defined as a tissue volume in the shape of a cube) and over the appropriate averaging time.

Population / Uncontrolled Environments : are defined as locations where there is the exposure of individuals who have no knowledge or control of their exposure.

Occupational / Controlled Environments : are defined as locations where there is exposure that may be incurred by persons who are aware of the potential for exposure, (i.e. as a result of employment or occupation).



12. Conclusion

The SAR test values found for the portable mobile device **Acer Inc. Trade Mark : acer Model (s): KAV10 , Aspire one, AOD 150** is below the maximum recommended level of 1.6 W/kg (mW/g).



13. References

- [1] Std. C95.1-2005, "American National Standard safety levels with respect to human exposure to radio frequency electromagnetic fields, 300KHz to 100GHz", New York.
- [2] NCRP, National Council on Radiation Protection and Measurements, "Biological Effects and Exposure Criteria for Radio frequency Electromagnetic Fields", NCRP report NO. 86, 1986.
- [3] T. Schmid, O. Egger, and N. Kuster, "Automatic E-field scanning system for dosimetric assessments", IEEE Transactions on Microwave Theory and Techniques, vol. 44, pp, 105-113, Jan. 1996.
- [4] K. Poković, T. Schmid, and N. Kuster, "Robust setup for precise calibration of E-field probes in tissue simulating liquids at mobile communications frequency", in ICECOM'97, Dubrovnik, October 15-17, 1997, pp.120-124.
- [5] K. Poković, T. Schmid, and N. Kuster, "E-field probe with improved isotropy in brain simulating liquids", in Proceedings of the ELMAR, Zadar, Croatia, 23-25 June, 1996, pp.172-175.
- [6] N. Kuster, and Q. Balzano, "Energy absorption mechanism by biological bodies in the near field of dipole antennas above 300MHz", IEEE Transaction on Vehicular Technology, vol. 41, no. 1, Feb. 1992, pp. 17-23.
- [7] Robert J. Renka, "Multivariate Interpolation Of Large Sets Of Scattered Data", University of North Texas ACM Transactions on Mathematical Software, vol. 14, no. 2, June 1988 , pp. 139-148.
- [8] N. Kuster, R. Kastle, T. Schmid, Dosimetric evaluation of mobile communications equipment with known precision, IEEE Transaction on Communications, vol. E80-B, no. 5, May 1997, pp. 645-652.
- [9] Std. C95.3-1991, "IEEE Recommended Practice for the Measurement of Potentially Hazardous Electromagnetic Fields - RF and Microwave, New York: IEEE", Aug. 1992.
- [10] CENELEC CLC/SC111B, European Prestandard (prENV 50166-2), Human Exposure to Electromagnetic Fields High-frequency: 10KHz-300GHz, Jan. 1995.



Appendix A - System Performance Check

See following attached pages for System Performance Check.



Test Laboratory: A Test Lab Techno Corp.

Date/Time: 1/14/2009 3:40:55 PM

System Performance Check at 2450MHz_20090114_Body

DUT: Dipole 2450 MHz; Type: D2450V2; Serial: D2450V2 - SN:712

Communication System: CW; Frequency: 2450 MHz; Duty Cycle: 1:1

Medium parameters used: $f = 2450$ MHz; $\sigma = 1.97$ mho/m; $\epsilon_r = 53.7$; $\rho = 1000$ kg/m³

Phantom section: Flat Section

Measurement Standard: DASY5 (IEEE/IEC)

DASY5 Configuration:

- Probe: EX3DV4 - SN3578; ConvF(6.55, 6.55, 6.55); Calibrated: 5/20/2008
- Sensor-Surface: 4mm (Mechanical Surface Detection)
- Electronics: DAE4 Sn779; Calibrated: 11/11/2008
- Phantom: ELI 4.0; Type: QDOVA001BB; Serial: 1036
- Measurement SW: DASY5, V5.0 Build 120; SEMCAD X Version 13.2 Build 87

System Performance Check at 2450MHz/Area Scan (61x61x1):

Measurement grid: dx=15mm, dy=15mm

Maximum value of SAR (interpolated) = 14.7 mW/g

System Performance Check at 2450MHz/Zoom Scan (7x7x7)/Cube 0:

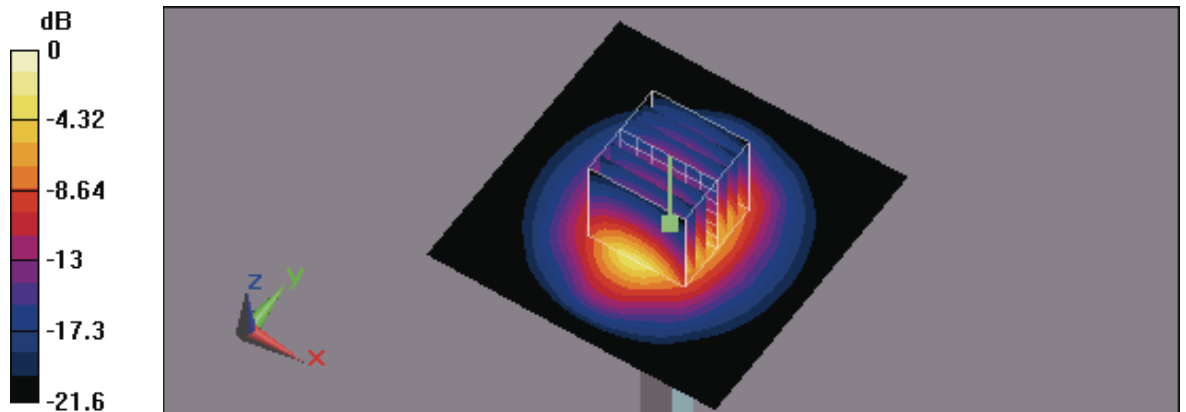
Measurement grid: dx=5mm, dy=5mm, dz=5mm

Reference Value = 85.2 V/m; Power Drift = 0.062 dB

Peak SAR (extrapolated) = 27.9 W/kg

SAR(1 g) = 13.5 mW/g; SAR(10 g) = 6.19 mW/g

Maximum value of SAR (measured) = 15.6 mW/g



0 dB = 15.6mW/g



Appendix B - SAR Measurement Data

See following attached pages for SAR Measurement Data.



Test Laboratory: A Test Lab Techno Corp.

Date/Time: 1/14/2009 6:19:12 PM

Flat_802.11b CH1_11M_Bottom Close Body

DUT: KAV10; Type: Notebook Computer; FCC ID:HLZUNDP-1C

Communication System: IEEE 802.11b; Frequency: 2412 MHz; Duty Cycle: 1:1
Medium parameters used: $f = 2412$ MHz; $\sigma = 1.93$ mho/m; $\epsilon_r = 53.8$; $\rho = 1000$ kg/m³
Phantom section: Flat Section
Measurement Standard: DASYS (IEEE/IEC)

DASY5 Configuration:

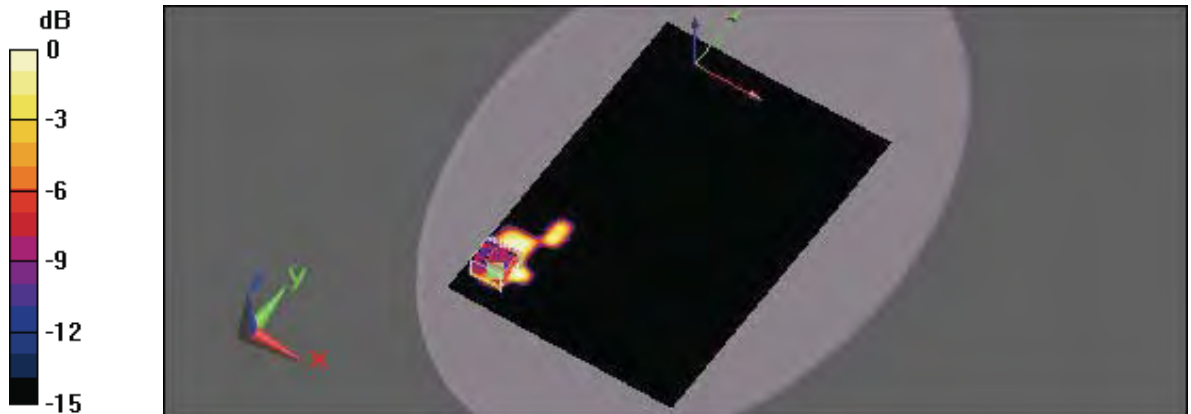
- Probe: EX3DV4 - SN3578; ConvF(6.55, 6.55, 6.55); Calibrated: 5/20/2008
- Sensor-Surface: 3mm (Mechanical Surface Detection)
- Electronics: DAE4 Sn779; Calibrated: 11/11/2008
- Phantom: ELI 4.0; Type: QDOVA001BB; Serial: 1036
- Measurement SW: DASYS, V5.0 Build 120; SEMCAD X Version 13.2 Build 87

Flat/Area Scan (151x221x1):

Measurement grid: dx=15mm, dy=15mm
Maximum value of SAR (interpolated) = 0.013 mW/g

Flat/Zoom Scan (7x7x9)/Cube 0:

Measurement grid: dx=5mm, dy=5mm, dz=3mm
Reference Value = 0.184 V/m; Power Drift = 0.15 dB
Peak SAR (extrapolated) = 0.019 W/kg
SAR(1 g) = 0.0079 mW/g; SAR(10 g) = 0.00456 mW/g
Maximum value of SAR (measured) = 0.010 mW/g



0 dB = 0.010mW/g



Test Laboratory: A Test Lab Techno Corp.

Date/Time: 1/15/2009 1:36:28 AM

Flat_802.11b CH6_11M_Bottom Close Body

DUT: KAV10; Type: Notebook Computer; FCC ID:HLZUNDP-1C

Communication System: IEEE 802.11b; Frequency: 2437 MHz; Duty Cycle: 1:1
Medium parameters used: $f = 2437$ MHz; $\sigma = 1.95$ mho/m; $\epsilon_r = 53.7$; $\rho = 1000$ kg/m³
Phantom section: Flat Section
Measurement Standard: DASYS (IEEE/IEC)

DASY5 Configuration:

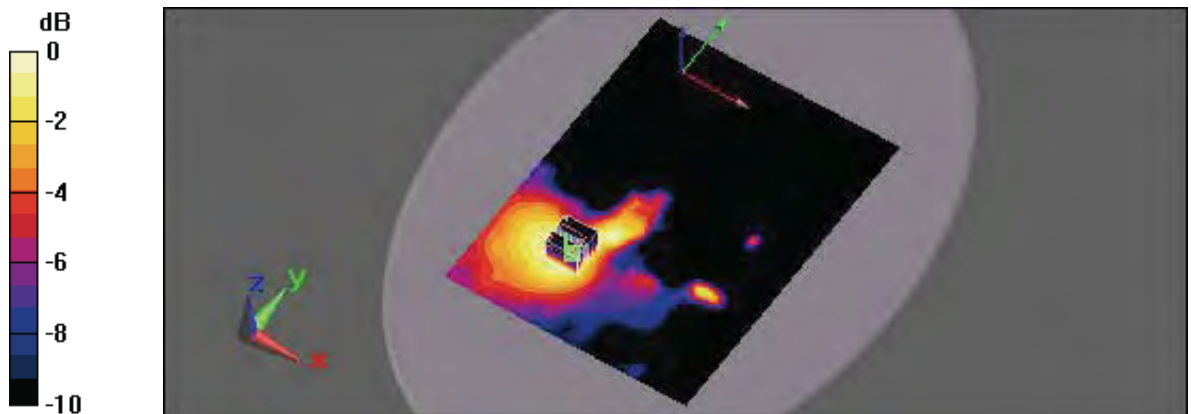
- Probe: EX3DV4 - SN3578; ConvF(6.55, 6.55, 6.55); Calibrated: 5/20/2008
- Sensor-Surface: 3mm (Mechanical Surface Detection)
- Electronics: DAE4 Sn779; Calibrated: 11/11/2008
- Phantom: ELI 4.0; Type: QDOVA001BB; Serial: 1036
- Measurement SW: DASYS, V5.0 Build 120; SEMCAD X Version 13.2 Build 87

Flat/Area Scan (151x201x1):

Measurement grid: dx=15mm, dy=15mm
Maximum value of SAR (interpolated) = 0.050 mW/g

Flat/Zoom Scan (7x7x9)/Cube 0:

Measurement grid: dx=5mm, dy=5mm, dz=3mm
Reference Value = 1.09 V/m; Power Drift = -0.168 dB
Peak SAR (extrapolated) = 0.074 W/kg
SAR(1 g) = 0.040 mW/g; SAR(10 g) = 0.024 mW/g
Maximum value of SAR (measured) = 0.048 mW/g





Test Laboratory: A Test Lab Techno Corp.

Date/Time: 1/15/2009 2:37:49 AM

Flat_802.11b CH11_11M_Bottom Close Body

DUT: KAV10; Type: Notebook Computer; FCC ID:HLZUNDP-1C

Communication System: IEEE 802.11b; Frequency: 2462 MHz; Duty Cycle: 1:1
Medium parameters used: $f = 2462 \text{ MHz}$; $\sigma = 1.98 \text{ mho/m}$; $\epsilon_r = 53.7$; $\rho = 1000 \text{ kg/m}^3$
Phantom section: Flat Section
Measurement Standard: DASYS (IEEE/IEC)

DASY5 Configuration:

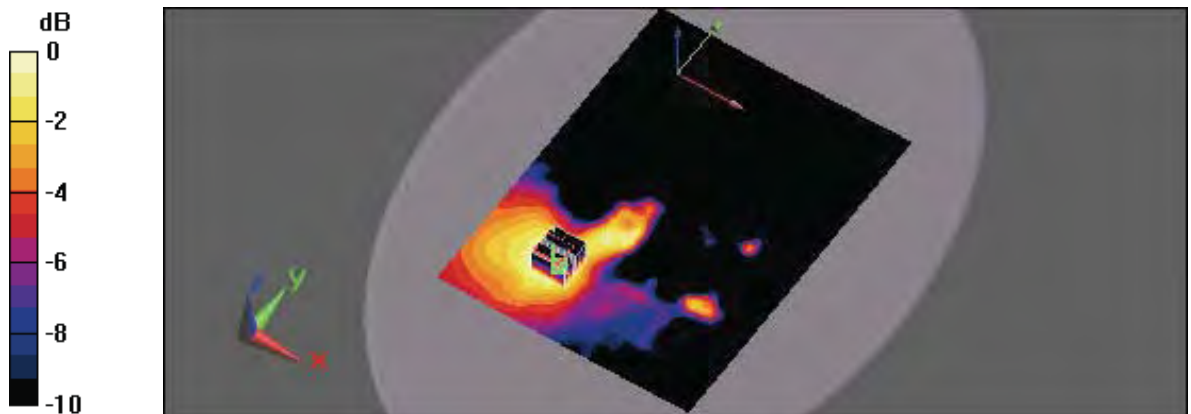
- Probe: EX3DV4 - SN3578; ConvF(6.55, 6.55, 6.55); Calibrated: 5/20/2008
- Sensor-Surface: 3mm (Mechanical Surface Detection)
- Electronics: DAE4 Sn779; Calibrated: 11/11/2008
- Phantom: ELI 4.0; Type: QDOVA001BB; Serial: 1036
- Measurement SW: DASYS, V5.0 Build 120; SEMCAD X Version 13.2 Build 87

Flat/Area Scan (151x201x1):

Measurement grid: $dx=15\text{mm}$, $dy=15\text{mm}$
Maximum value of SAR (interpolated) = 0.038 mW/g

Flat/Zoom Scan (7x7x9)/Cube 0:

Measurement grid: $dx=5\text{mm}$, $dy=5\text{mm}$, $dz=3\text{mm}$
Reference Value = 1.45 V/m; Power Drift = 0.046 dB
Peak SAR (extrapolated) = 0.059 W/kg
SAR(1 g) = 0.031 mW/g; SAR(10 g) = 0.018 mW/g
Maximum value of SAR (measured) = 0.038 mW/g



0 dB = 0.038mW/g



Test Laboratory: A Test Lab Techno Corp.

Date/Time: 1/14/2009 11:31:45 PM

Flat_802.11g CH1_54M_Bottom Close Body

DUT: KAV10; Type: Notebook Computer; FCC ID:HLZUNDP-1C

Communication System: IEEE 802.11g; Frequency: 2412 MHz; Duty Cycle: 1:1
Medium parameters used: $f = 2412$ MHz; $\sigma = 1.93$ mho/m; $\epsilon_r = 53.8$; $\rho = 1000$ kg/m³
Phantom section: Flat Section
Measurement Standard: DASYS (IEEE/IEC)

DASY5 Configuration:

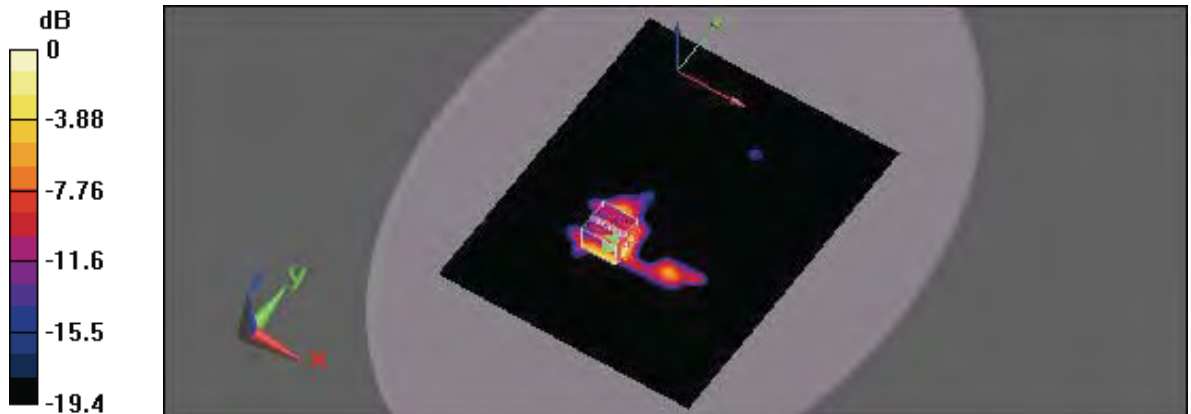
- Probe: EX3DV4 - SN3578; ConvF(6.55, 6.55, 6.55); Calibrated: 5/20/2008
- Sensor-Surface: 3mm (Mechanical Surface Detection)
- Electronics: DAE4 Sn779; Calibrated: 11/11/2008
- Phantom: ELI 4.0; Type: QDOVA001BB; Serial: 1036
- Measurement SW: DASYS, V5.0 Build 120; SEMCAD X Version 13.2 Build 87

Flat/Area Scan (151x191x1):

Measurement grid: dx=15mm, dy=15mm
Maximum value of SAR (interpolated) = 0.031 mW/g

Flat/Zoom Scan (7x7x9)/Cube 0:

Measurement grid: dx=5mm, dy=5mm, dz=3mm
Reference Value = 0.575 V/m; Power Drift = -0.113 dB
Peak SAR (extrapolated) = 0.069 W/kg
SAR(1 g) = 0.038 mW/g; SAR(10 g) = 0.022 mW/g
Maximum value of SAR (measured) = 0.047 mW/g





Test Laboratory: A Test Lab Techno Corp.

Date/Time: 1/14/2009 9:04:58 PM

Flat_802.11g CH6_54M_Bottom Close Body

DUT: KAV10; Type: Notebook Computer; FCC ID:HLZUNDP-1C

Communication System: IEEE 802.11g; Frequency: 2437 MHz; Duty Cycle: 1:1
Medium parameters used: $f = 2437$ MHz; $\sigma = 1.95$ mho/m; $\epsilon_r = 53.7$; $\rho = 1000$ kg/m³
Phantom section: Flat Section
Measurement Standard: DASYS (IEEE/IEC)

DASY5 Configuration:

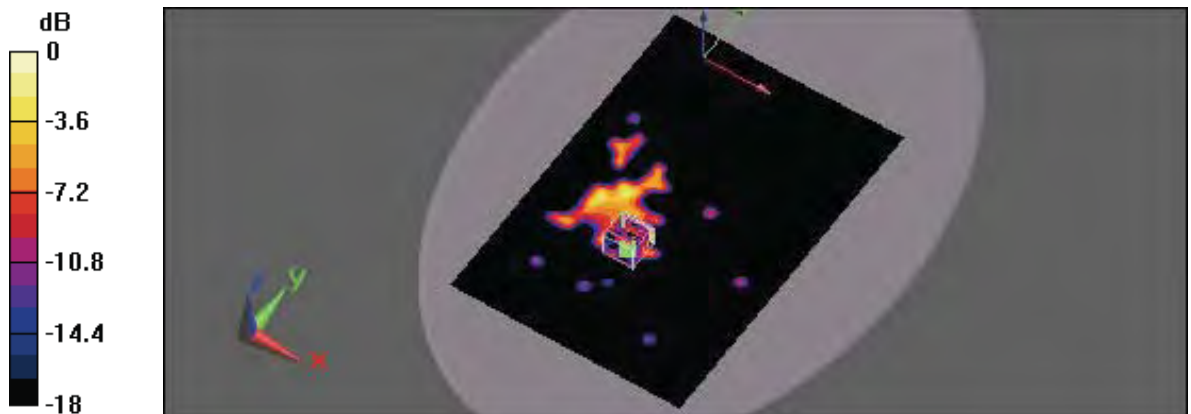
- Probe: EX3DV4 - SN3578; ConvF(6.55, 6.55, 6.55); Calibrated: 5/20/2008
- Sensor-Surface: 3mm (Mechanical Surface Detection)
- Electronics: DAE4 Sn779; Calibrated: 11/11/2008
- Phantom: ELI 4.0; Type: QDOVA001BB; Serial: 1036
- Measurement SW: DASYS, V5.0 Build 120; SEMCAD X Version 13.2 Build 87

Flat/Area Scan (151x221x1):

Measurement grid: dx=15mm, dy=15mm
Maximum value of SAR (interpolated) = 0.0084 mW/g

Flat/Zoom Scan (7x7x9)/Cube 0:

Measurement grid: dx=5mm, dy=5mm, dz=3mm
Reference Value = 0.611 V/m; Power Drift = 0.015 dB
Peak SAR (extrapolated) = 0.019 W/kg
SAR(1 g) = 0.00672 mW/g; SAR(10 g) = 0.00252 mW/g
Maximum value of SAR (measured) = 0.013 mW/g



0 dB = 0.013mW/g



Test Laboratory: A Test Lab Techno Corp.

Date/Time: 1/14/2009 10:38:17 PM

Flat_802.11g CH11_54M_Bottom Close Body

DUT: KAV10; Type: Notebook Computer; FCC ID:HLZUNDP-1C

Communication System: IEEE 802.11g; Frequency: 2462 MHz; Duty Cycle: 1:1
Medium parameters used: $f = 2462$ MHz; $\sigma = 1.98$ mho/m; $\epsilon_r = 53.7$; $\rho = 1000$ kg/m³
Phantom section: Flat Section
Measurement Standard: DASYS (IEEE/IEC)

DASY5 Configuration:

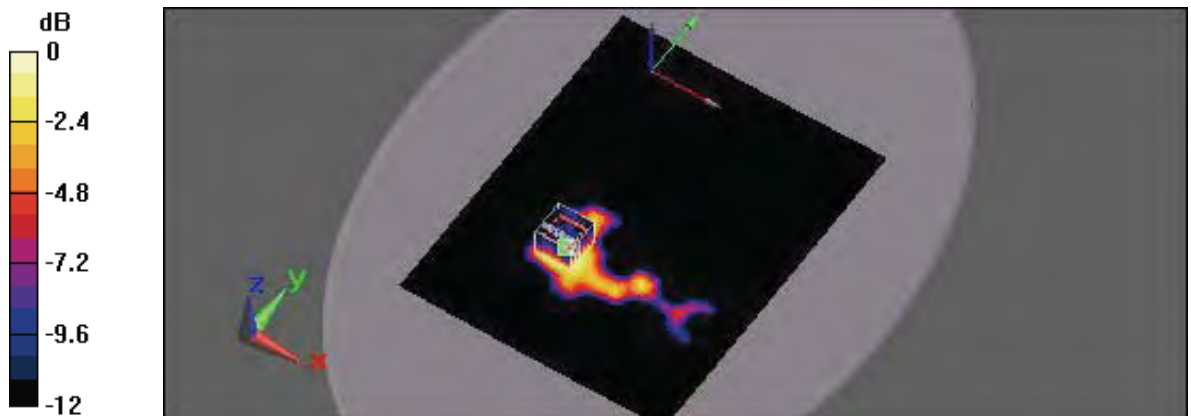
- Probe: EX3DV4 - SN3578; ConvF(6.55, 6.55, 6.55); Calibrated: 5/20/2008
- Sensor-Surface: 3mm (Mechanical Surface Detection)
- Electronics: DAE4 Sn779; Calibrated: 11/11/2008
- Phantom: ELI 4.0; Type: QDOVA001BB; Serial: 1036
- Measurement SW: DASYS, V5.0 Build 120; SEMCAD X Version 13.2 Build 87

Flat/Area Scan (151x191x1):

Measurement grid: dx=15mm, dy=15mm
Maximum value of SAR (interpolated) = 0.021 mW/g

Flat/Zoom Scan (7x7x9)/Cube 0:

Measurement grid: dx=5mm, dy=5mm, dz=3mm
Reference Value = 0.607 V/m; Power Drift = 0.136 dB
Peak SAR (extrapolated) = 0.032 W/kg
SAR(1 g) = 0.016 mW/g; SAR(10 g) = 0.00874 mW/g
Maximum value of SAR (measured) = 0.020 mW/g



0 dB = 0.020mW/g



Appendix C - Calibration

All of the instruments Calibration information are listed below.

- Dipole _ D2450V2 SN:712 Calibration No.D2450V2-712_Jan08
- Probe _ EX3DV4 SN:3578 Calibration No.EX3-3578_May08
- DAE _ DAE4 SN:779 Calibration No.DAE4-779_Nov08



Accredited by the Swiss Accreditation Service (SAS)
The Swiss Accreditation Service is one of the signatories to the EA
Multilateral Agreement for the recognition of calibration certificates

Accreditation No.: **SCS 108**

Client **ATL (Auden)**

Certificate No: **D2450V2-712_Jan08**

CALIBRATION CERTIFICATE

Object **D2450V2 - SN: 712**

Calibration procedure(s) **QA CAL-05.v7
Calibration procedure for dipole validation kits**

Calibration date: **January 30, 2008**

Condition of the calibrated item **In Tolerance**

This calibration certificate documents the traceability to national standards, which realize the physical units of measurements (SI).
The measurements and the uncertainties with confidence probability are given on the following pages and are part of the certificate.

All calibrations have been conducted in the closed laboratory facility: environment temperature (22 ± 3)°C and humidity < 70%.

Calibration Equipment used (M&TE critical for calibration)

Primary Standards	ID #	Cal Date (Calibrated by, Certificate No.)	Scheduled Calibration
Power meter EPM-442A	GB37480704	04-Oct-07 (METAS, No. 217-00736)	Oct-08
Power sensor HP 8481A	US37292783	04-Oct-07 (METAS, No. 217-00736)	Oct-08
Reference 20 dB Attenuator	SN: 5086 (20g)	07-Aug-07 (METAS, No 217-00718)	Aug-08
Reference 10 dB Attenuator	SN: 5047.2 (10r)	07-Aug-07 (METAS, No 217-00718)	Aug-08
Reference Probe ES3DV2	SN: 3025	26-Oct-07 (SPEAG, No. ES3-3025_Oct07)	Oct-08
DAE4	SN 601	03-Jan-08 (SPEAG, No. DAE4-601_Jan08)	Jan-09

Secondary Standards	ID #	Check Date (in house)	Scheduled Check
Power sensor HP 8481A	MY41092317	18-Oct-02 (SPEAG, in house check Oct-07)	In house check: Oct-08
RF generator R&S SMT-06	100005	4-Aug-99 (SPEAG, in house check Oct-07)	In house check: Oct-09
Network Analyzer HP 8753E	US37390585 S4206	18-Oct-01 (SPEAG, in house check Oct-07)	In house check: Oct-08

	Name	Function	Signature
Calibrated by:	Claudio Leubler	Laboratory Technician	

Approved by:	Katja Pokovic	Technical Manager	
--------------	---------------	-------------------	--

Issued: January 31, 2008

This calibration certificate shall not be reproduced except in full without written approval of the laboratory.



Accredited by the Swiss Accreditation Service (SAS)
The Swiss Accreditation Service is one of the signatories to the EA
Multilateral Agreement for the recognition of calibration certificates

Accreditation No.: **SCS 108**

Glossary:

TSL	tissue simulating liquid
ConvF	sensitivity in TSL / NORM x,y,z
N/A	not applicable or not measured

Calibration is Performed According to the Following Standards:

- a) IEEE Std 1528-2003, "IEEE Recommended Practice for Determining the Peak Spatial-Averaged Specific Absorption Rate (SAR) in the Human Head from Wireless Communications Devices: Measurement Techniques", December 2003
- b) IEC 62209-1, "Procedure to measure the Specific Absorption Rate (SAR) for hand-held devices used in close proximity to the ear (frequency range of 300 MHz to 3 GHz)", February 2005
- c) Federal Communications Commission Office of Engineering & Technology (FCC OET), "Evaluating Compliance with FCC Guidelines for Human Exposure to Radiofrequency Electromagnetic Fields; Additional Information for Evaluating Compliance of Mobile and Portable Devices with FCC Limits for Human Exposure to Radiofrequency Emissions", Supplement C (Edition 01-01) to Bulletin 65

Additional Documentation:

- d) DASY4 System Handbook

Methods Applied and Interpretation of Parameters:

- *Measurement Conditions:* Further details are available from the Validation Report at the end of the certificate. All figures stated in the certificate are valid at the frequency indicated.
- *Antenna Parameters with TSL:* The dipole is mounted with the spacer to position its feed point exactly below the center marking of the flat phantom section, with the arms oriented parallel to the body axis.
- *Feed Point Impedance and Return Loss:* These parameters are measured with the dipole positioned under the liquid filled phantom. The impedance stated is transformed from the measurement at the SMA connector to the feed point. The Return Loss ensures low reflected power. No uncertainty required.
- *Electrical Delay:* One-way delay between the SMA connector and the antenna feed point. No uncertainty required.
- *SAR measured:* SAR measured at the stated antenna input power.
- *SAR normalized:* SAR as measured, normalized to an input power of 1 W at the antenna connector.
- *SAR for nominal TSL parameters:* The measured TSL parameters are used to calculate the nominal SAR result.

Measurement Conditions

DASY system configuration, as far as not given on page 1.

DASY Version	DASY4	V4.7
Extrapolation	Advanced Extrapolation	
Phantom	Modular Flat Phantom V5.0	
Distance Dipole Center - TSL	10 mm	with Spacer
Zoom Scan Resolution	dx, dy, dz = 5 mm	
Frequency	2450 MHz \pm 1 MHz	

Head TSL parameters

The following parameters and calculations were applied.

	Temperature	Permittivity	Conductivity
Nominal Head TSL parameters	22.0 °C	39.2	1.80 mho/m
Measured Head TSL parameters	(22.0 \pm 0.2) °C	37.8 \pm 6 %	1.82 mho/m \pm 6 %
Head TSL temperature during test	(21.5 \pm 0.2) °C	-----	-----

SAR result with Head TSL

SAR averaged over 1 cm³ (1 g) of Head TSL	condition	
SAR measured	250 mW input power	13.9 mW / g
SAR normalized	normalized to 1W	55.6 mW / g
SAR for nominal Head TSL parameters ¹	normalized to 1W	54.3 mW / g \pm 17.0 % (k=2)

SAR averaged over 10 cm³ (10 g) of Head TSL	condition	
SAR measured	250 mW input power	6.44 mW / g
SAR normalized	normalized to 1W	25.8 mW / g
SAR for nominal Head TSL parameters ¹	normalized to 1W	25.4 mW / g \pm 16.5 % (k=2)

¹ Correction to nominal TSL parameters according to d), chapter "SAR Sensitivities"

Body TSL parameters

The following parameters and calculations were applied.

	Temperature	Permittivity	Conductivity
Nominal Body TSL parameters	22.0 °C	52.7	1.95 mho/m
Measured Body TSL parameters	(22.0 ± 0.2) °C	52.4 ± 6 %	1.98 mho/m ± 6 %
Body TSL temperature during test	(21.5 ± 0.2) °C	-----	-----

SAR result with Body TSL

SAR averaged over 1 cm ³ (1 g) of Body TSL	condition	
SAR measured	250 mW input power	13.4 mW / g
SAR normalized	normalized to 1W	53.6 mW / g
SAR for nominal Body TSL parameters ²	normalized to 1W	53.1 mW / g ± 17.0 % (k=2)

SAR averaged over 10 cm ³ (10 g) of Body TSL	condition	
SAR measured	250 mW input power	6.20 mW / g
SAR normalized	normalized to 1W	24.8 mW / g
SAR for nominal Body TSL parameters ²	normalized to 1W	24.7 mW / g ± 16.5 % (k=2)

² Correction to nominal TSL parameters according to d), chapter "SAR Sensitivities"

Appendix

Antenna Parameters with Head TSL

Impedance, transformed to feed point	$53.3 \Omega + 4.7 j\Omega$
Return Loss	- 25.2 dB

Antenna Parameters with Body TSL

Impedance, transformed to feed point	$49.9 \Omega + 7.2 j\Omega$
Return Loss	- 22.8 dB

General Antenna Parameters and Design

Electrical Delay (one direction)	1.148 ns
----------------------------------	----------

After long term use with 100W radiated power, only a slight warming of the dipole near the feedpoint can be measured.

The dipole is made of standard semirigid coaxial cable. The center conductor of the feeding line is directly connected to the second arm of the dipole. The antenna is therefore short-circuited for DC-signals.

No excessive force must be applied to the dipole arms, because they might bend or the soldered connections near the feedpoint may be damaged.

Additional EUT Data

Manufactured by	SPEAG
Manufactured on	July 05, 2002

DASY4 Validation Report for Head TSL

Date/Time: 30.01.2008 12:18:11

Test Laboratory: SPEAG, Zurich, Switzerland

DUT: Dipole 2450 MHz; Type: D2450V2; Serial: D2450V2 - SN712

Communication System: CW-2450; Frequency: 2450 MHz; Duty Cycle: 1:1

Medium: HSL U10 BB;

Medium parameters used: $f = 2450$ MHz; $\sigma = 1.82$ mho/m; $\epsilon_r = 37.8$; $\rho = 1000$ kg/m³

Phantom section: Flat Section

Measurement Standard: DASY4 (High Precision Assessment)

DASY4 Configuration:

- Probe: ES3DV2 - SN3025 (HF); ConvF(4.41, 4.41, 4.41); Calibrated: 26.10.2007
- Sensor-Surface: 4mm (Mechanical Surface Detection)
- Electronics: DAE4 Sn601; Calibrated: 03.01.2008
- Phantom: Flat Phantom 5.0 (front); Type: QD000P50AA; ;
- Measurement SW: DASY4, V4.7 Build 55; Postprocessing SW: SEMCAD, V1.8 Build 172

Pin = 250 mW; d = 10 mm/Zoom Scan (7x7x7)/Cube 0:

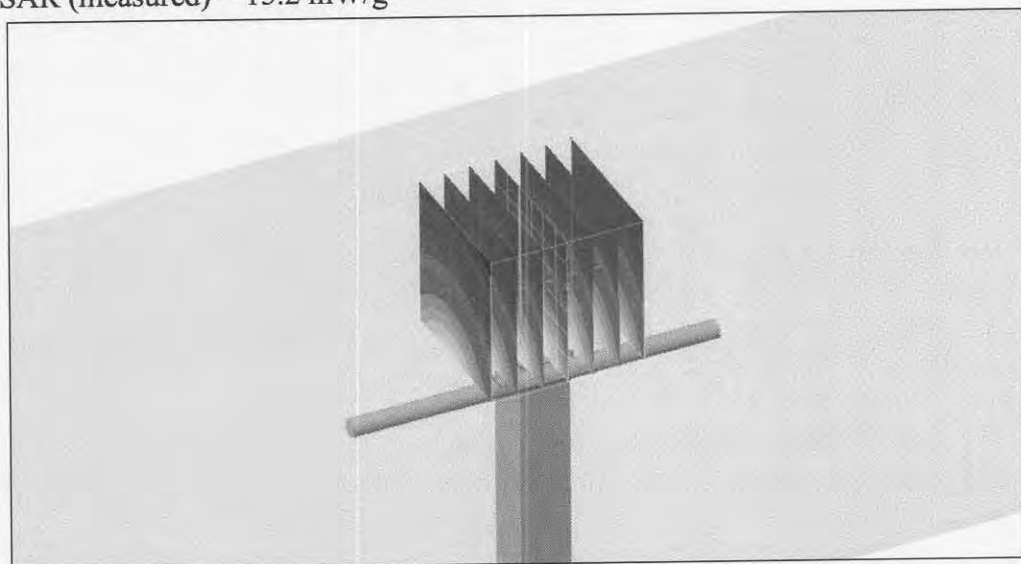
Measurement grid: dx=5mm, dy=5mm, dz=5mm

Reference Value = 91.1 V/m; Power Drift = 0.063 dB

Peak SAR (extrapolated) = 29.9 W/kg

SAR(1 g) = 13.9 mW/g; SAR(10 g) = 6.44 mW/g

Maximum value of SAR (measured) = 15.2 mW/g



0 dB = 15.2mW/g

Impedance Measurement Plot for Head TSL

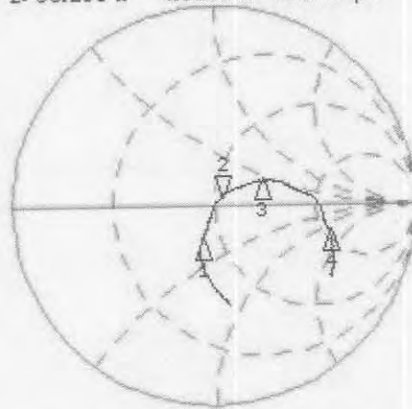
30 Jan 2008 11:15:29

CH1 S11 1 U FS

2: 53.266 Ω 4.6563 Ω 302.48 pF

2 450.000 000 MHz

*
De1
Cor



CH1 Markers

1: 41.463 Ω
-15.084 Ω
2.30000 GHz
3: 76.125 Ω
19.742 Ω
2.60000 GHz
4: 160.66 Ω
-64.391 Ω
3.00000 GHz

Avg
16

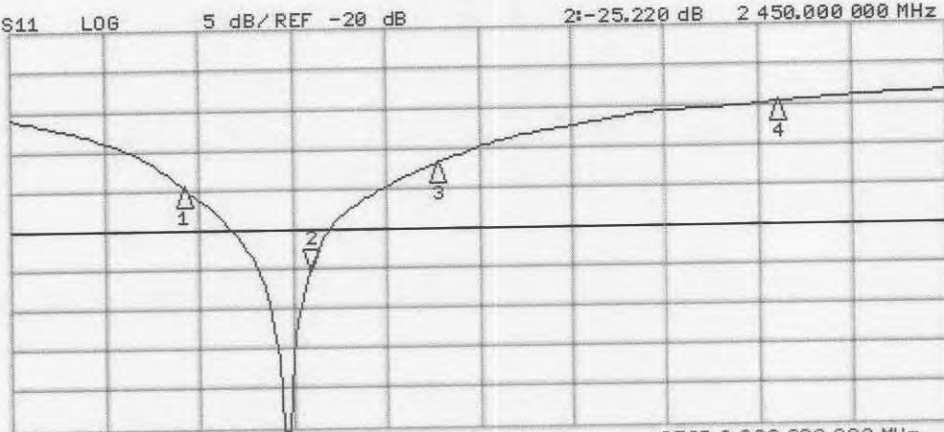
↑

CH2 S11 LOG 5 dB/REF -20 dB 2:-25.220 dB 2 450.000 000 MHz

Cor

Avg
16

↑



CH2 Markers

1:-14.569 dB
2.30000 GHz
3:-11.819 dB
2.60000 GHz
4:-4.7133 dB
3.00000 GHz

START 2 100.000 000 MHz

STOP 3 200.000 000 MHz

DASY4 Validation Report for Body TSL

Date/Time: 23.01.2008 12:30:46

Test Laboratory: SPEAG, Zurich, Switzerland

DUT: Dipole 2450 MHz; Type: D2450V2; Serial: D2450V2 - SN712

Communication System: CW-2450; Frequency: 2450 MHz; Duty Cycle: 1:1

Medium: MSL U10 BB;

Medium parameters used: $f = 2450$ MHz; $\sigma = 1.99$ mho/m; $\epsilon_r = 52.5$; $\rho = 1000$ kg/m³

Phantom section: Flat Section

Measurement Standard: DASY4 (High Precision Assessment)

DASY4 Configuration:

- Probe: ES3DV2 - SN3025 (HF); ConvF(4.02, 4.02, 4.02); Calibrated: 26.10.2007
- Sensor-Surface: 4mm (Mechanical Surface Detection)
- Electronics: DAE4 Sn601; Calibrated: 03.01.2008
- Phantom: Flat Phantom 5.0 (front); Type: QD000P50AA; ;
- Measurement SW: DASY4, V4.7 Build 55; Postprocessing SW: SEMCAD, V1.8 Build 172

Pin = 250 mW; d = 10 mm/Zoom Scan (7x7x7)/Cube 0:

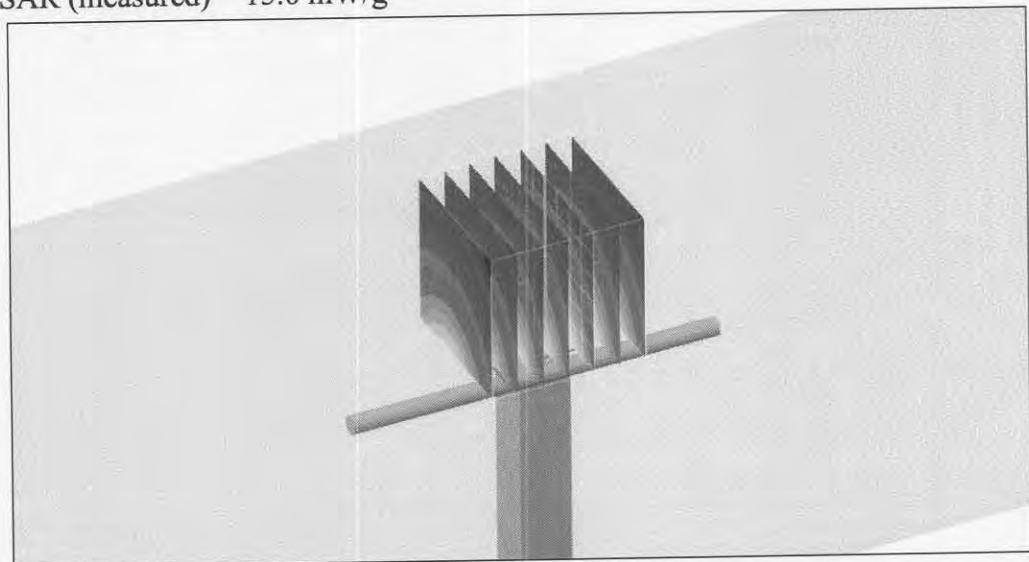
Measurement grid: dx=5mm, dy=5mm, dz=5mm

Reference Value = 83.3 V/m; Power Drift = 0.070 dB

Peak SAR (extrapolated) = 28.0 W/kg

SAR(1 g) = 13.4 mW/g; SAR(10 g) = 6.2 mW/g

Maximum value of SAR (measured) = 15.0 mW/g



0 dB = 15.0mW/g

Impedance Measurement Plot for Body TSL

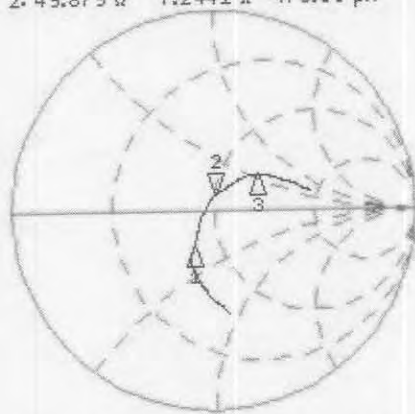
23 Jan 2008 11:26:00

CH1 S11 1 U FS

2: 49.879 Ω 7.2441 Ω 470.59 pF

2 450.000 000 MHz

*
Del
Cor



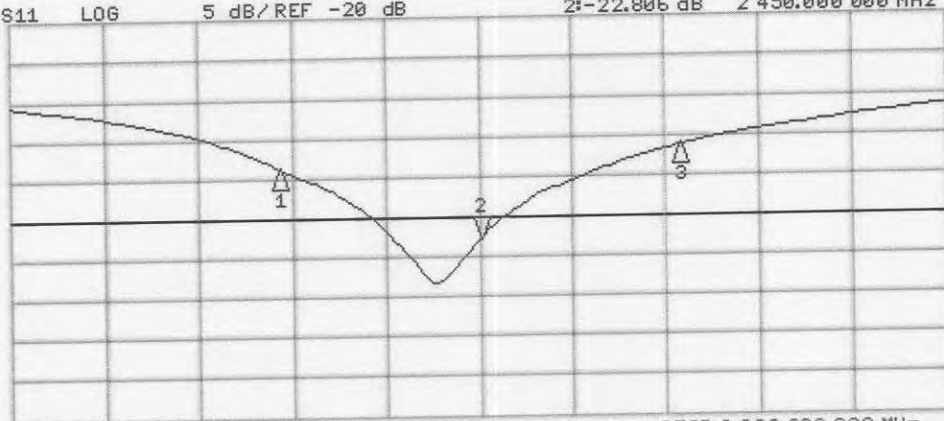
CH1 Markers
1: 38.588 Ω
-14.555 Ω
2.30000 GHz
3: 70.723 Ω
27.059 Ω
2.60000 GHz

Avg
16

↑

CH2 S11 LOG 5 dB/REF -20 dB 2:-22.806 dB 2 450.000 000 MHz

Cor



CH2 Markers
1:-13.723 dB
2.30000 GHz
3:-11.198 dB
2.60000 GHz

Avg
16

↑

START 2 100.000 000 MHz

STOP 2 800.000 000 MHz