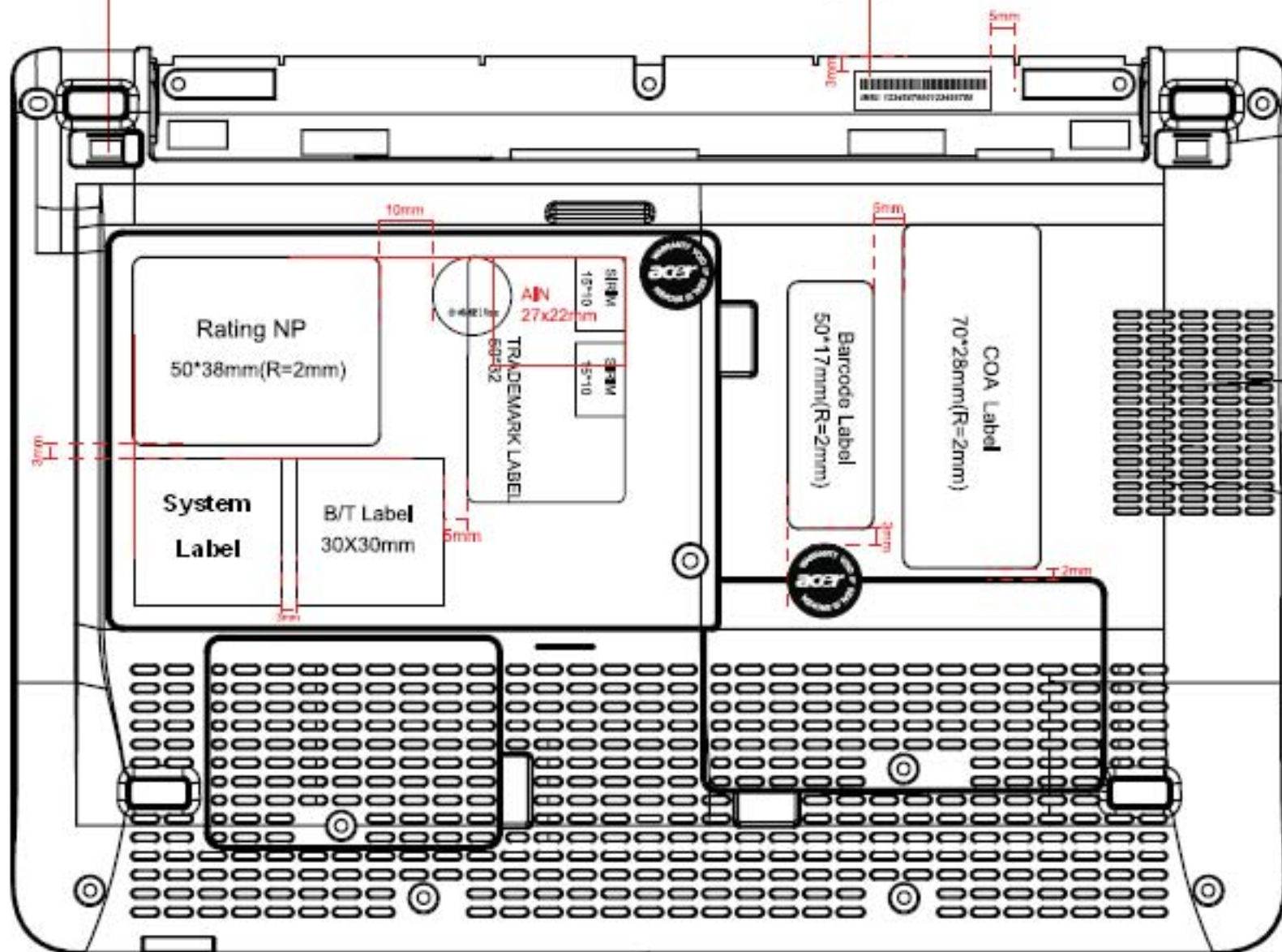
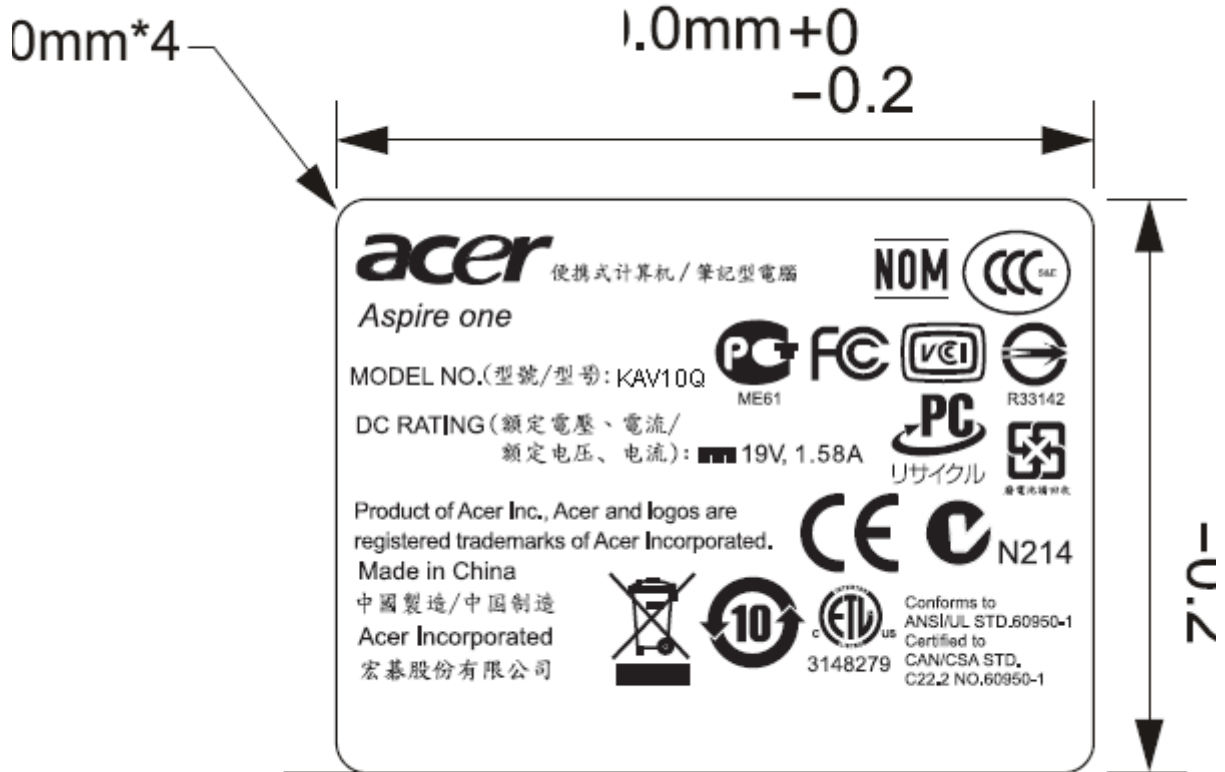
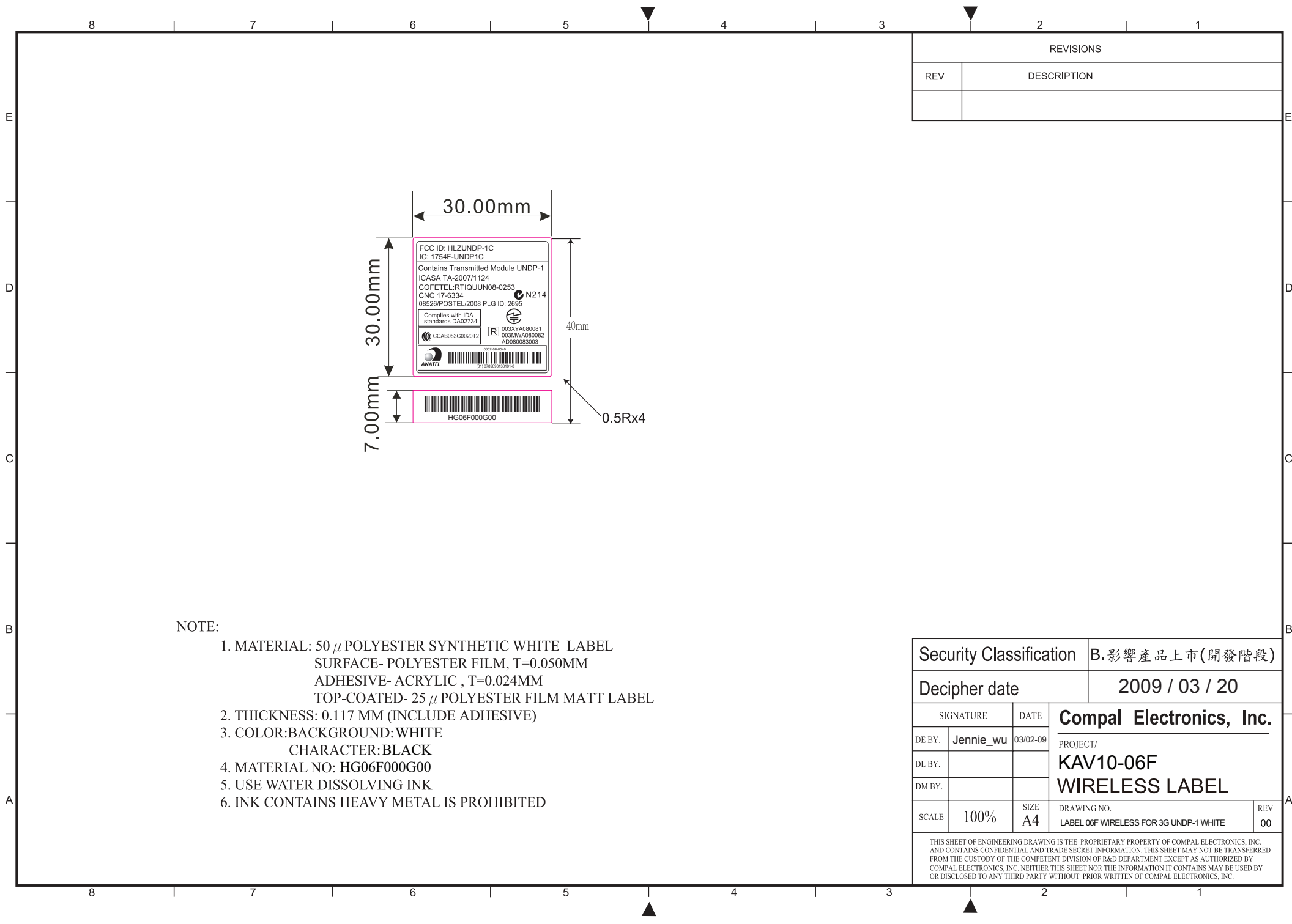


BATTERY KNOB MYLAR  
HH06F000600

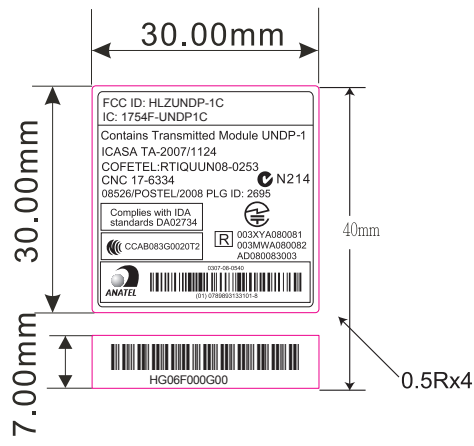
IMEI Label Printed in CIT  
52\*8mm







REVISIONS	
REV	DESCRIPTION



- NOTE:
1. MATERIAL: 50  $\mu$  POLYESTER SYNTHETIC WHITE LABEL  
 SURFACE- POLYESTER FILM, T=0.050MM  
 ADHESIVE- ACRYLIC , T=0.024MM  
 TOP-COATED- 25  $\mu$  POLYESTER FILM MATT LABEL
  2. THICKNESS: 0.117 MM (INCLUDE ADHESIVE)
  3. COLOR:BACKGROUND: WHITE  
 CHARACTER: BLACK
  4. MATERIAL NO: HG06F000G00
  5. USE WATER DISSOLVING INK
  6. INK CONTAINS HEAVY METAL IS PROHIBITED

Security Classification		B.影響產品上市(開發階段)		
Decipher date		2009 / 03 / 20		
SIGNATURE		DATE	<b>Compal Electronics, Inc.</b> PROJECT/ <b>KAV10-06F</b> <b>WIRELESS LABEL</b>	
DE BY.	Jennie_wu	03/02-09		
DL BY.				
DM BY.				
SCALE	100%	SIZE A4	DRAWING NO. LABEL 06F WIRELESS FOR 3G UNDP-1 WHITE	REV 00
THIS SHEET OF ENGINEERING DRAWING IS THE PROPRIETARY PROPERTY OF COMPAL ELECTRONICS, INC. AND CONTAINS CONFIDENTIAL AND TRADE SECRET INFORMATION. THIS SHEET MAY NOT BE TRANSFERRED FROM THE CUSTODY OF THE COMPETENT DIVISION OF R&D DEPARTMENT EXCEPT AS AUTHORIZED BY COMPAL ELECTRONICS, INC. NEITHER THIS SHEET NOR THE INFORMATION IT CONTAINS MAY BE USED BY OR DISCLOSED TO ANY THIRD PARTY WITHOUT PRIOR WRITTEN OF COMPAL ELECTRONICS, INC.				

8 7 6 5 4 3 2 1

REVISIONS	
REV	DESCRIPTION

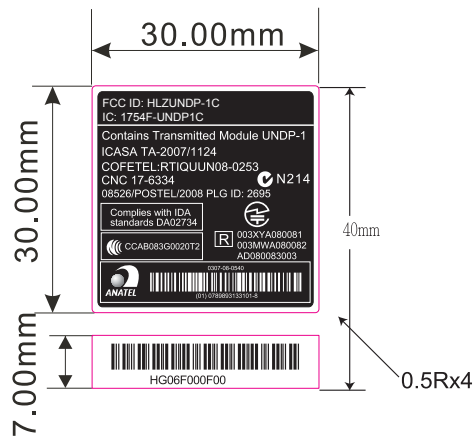
E

D

C

B

A

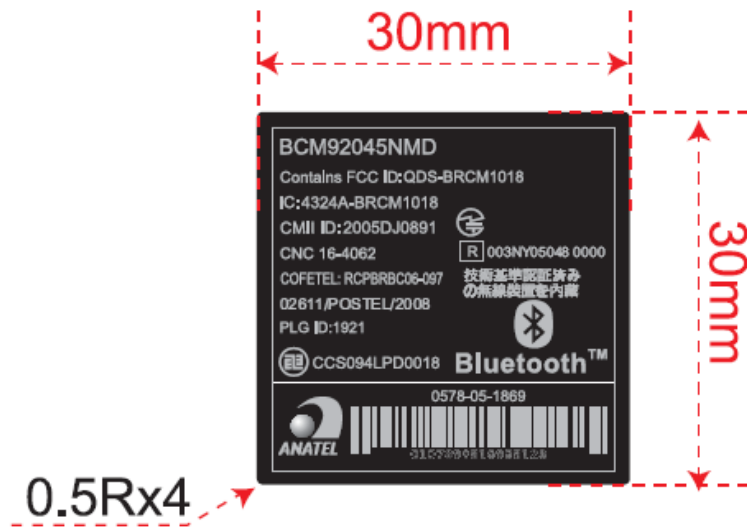


NOTE:

1. MATERIAL: 50  $\mu$  POLYESTER SYNTHETIC WHITE LABEL  
SURFACE- POLYESTER FILM, T=0.050MM  
ADHESIVE- ACRYLIC , T=0.024MM  
TOP-COATED- 25  $\mu$  POLYESTER FILM MATT LABEL
2. THICKNESS: 0.117 MM (INCLUDE ADHESIVE)
3. COLOR:BACKGROUND:BLACK  
CHARACTER:SILVER
4. MATERIAL NO: HG06F000F00
5. USE WATER DISSOLVING INK
6. INK CONTAINS HEAVY METAL IS PROHIBITED

Security Classification		B.影響產品上市(開發階段)	
Decipher date		2009 / 03 / 20	
SIGNATURE		DATE	<b>Compal Electronics, Inc.</b> PROJECT/ <b>KAV10-06F</b> <b>WIRELESS LABEL</b>
DE BY.	Jennie_wu	03/02-09	
DL BY.			
DM BY.			
SCALE	100%	SIZE A4	DRAWING NO. LABEL 06F WIRELESS FOR 3G UNDP-1
		REV	00
THIS SHEET OF ENGINEERING DRAWING IS THE PROPRIETARY PROPERTY OF COMPAL ELECTRONICS, INC. AND CONTAINS CONFIDENTIAL AND TRADE SECRET INFORMATION. THIS SHEET MAY NOT BE TRANSFERRED FROM THE CUSTODY OF THE COMPETENT DIVISION OF R&D DEPARTMENT EXCEPT AS AUTHORIZED BY COMPAL ELECTRONICS, INC. NEITHER THIS SHEET NOR THE INFORMATION IT CONTAINS MAY BE USED BY OR DISCLOSED TO ANY THIRD PARTY WITHOUT PRIOR WRITTEN OF COMPAL ELECTRONICS, INC.			

8 7 6 5 4 3 2 1



BT LABEL T60H928.11  
PN:HCZK3013010