

Test Mode UNII-2A, Nominal Bandwidth / Channel: 160 MHz / 5250 MHz

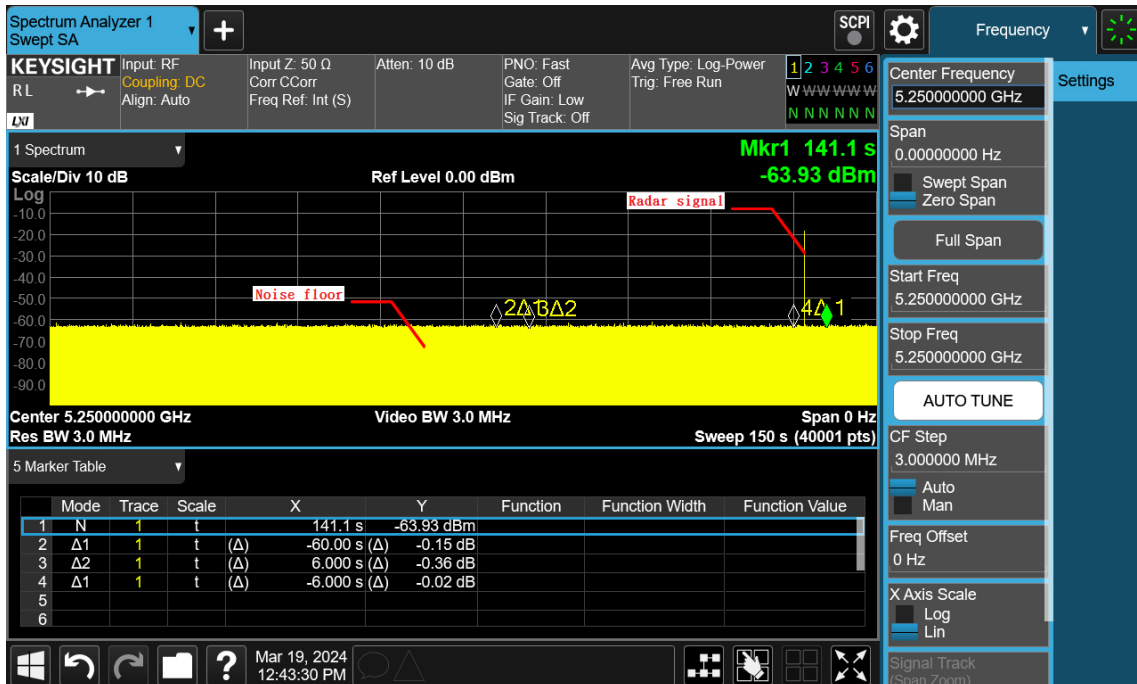
Initial Channel Availability Check Time



Radar Burst at the Beginning of the Channel Availability Check Time



Radar Burst at the End of the Channel Availability Check Time

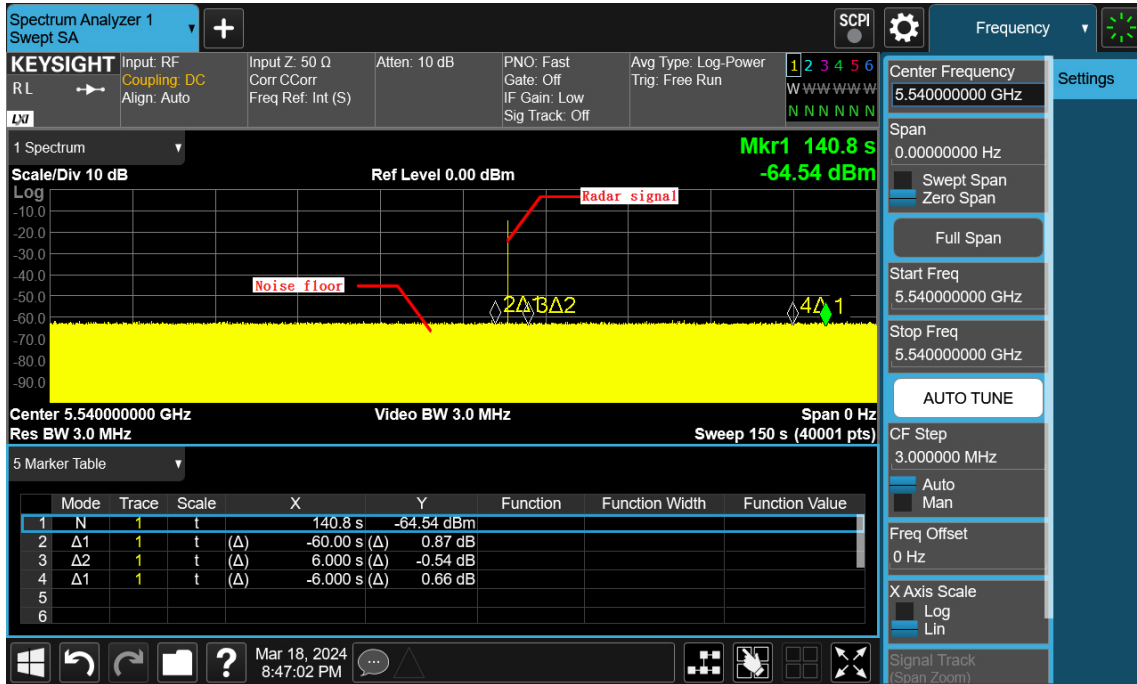


Test Mode UNII-2C, Nominal Bandwidth / Channel: 20 MHz / 5540 MHz

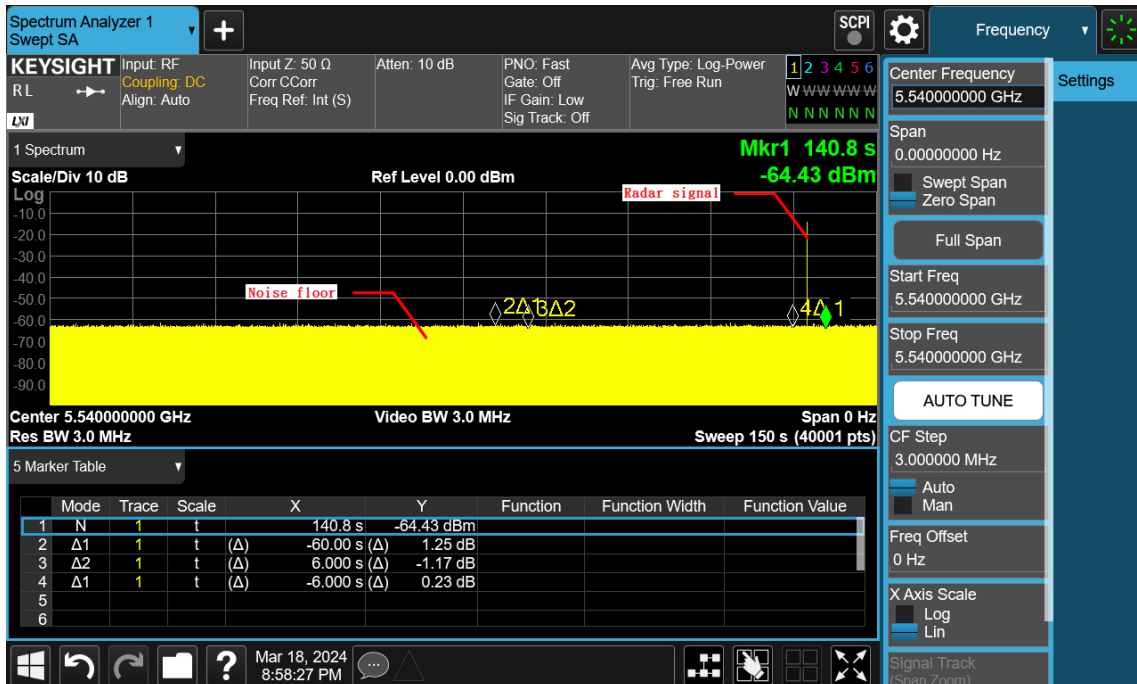
Initial Channel Availability Check Time



Radar Burst at the Beginning of the Channel Availability Check Time

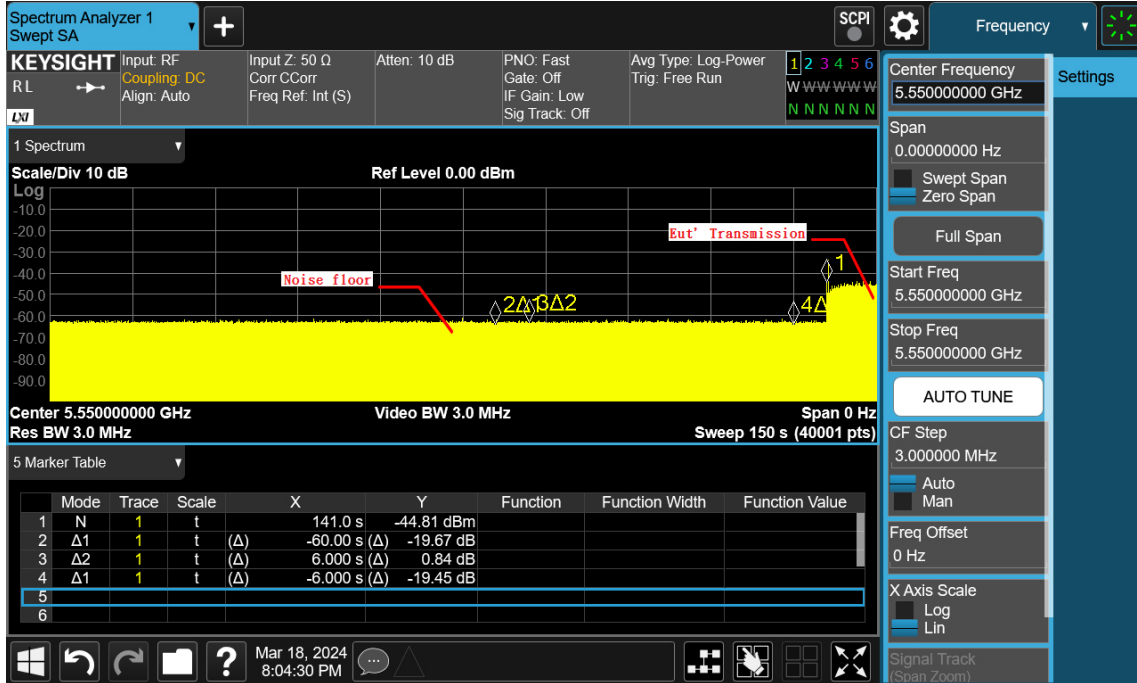


Radar Burst at the End of the Channel Availability Check Time

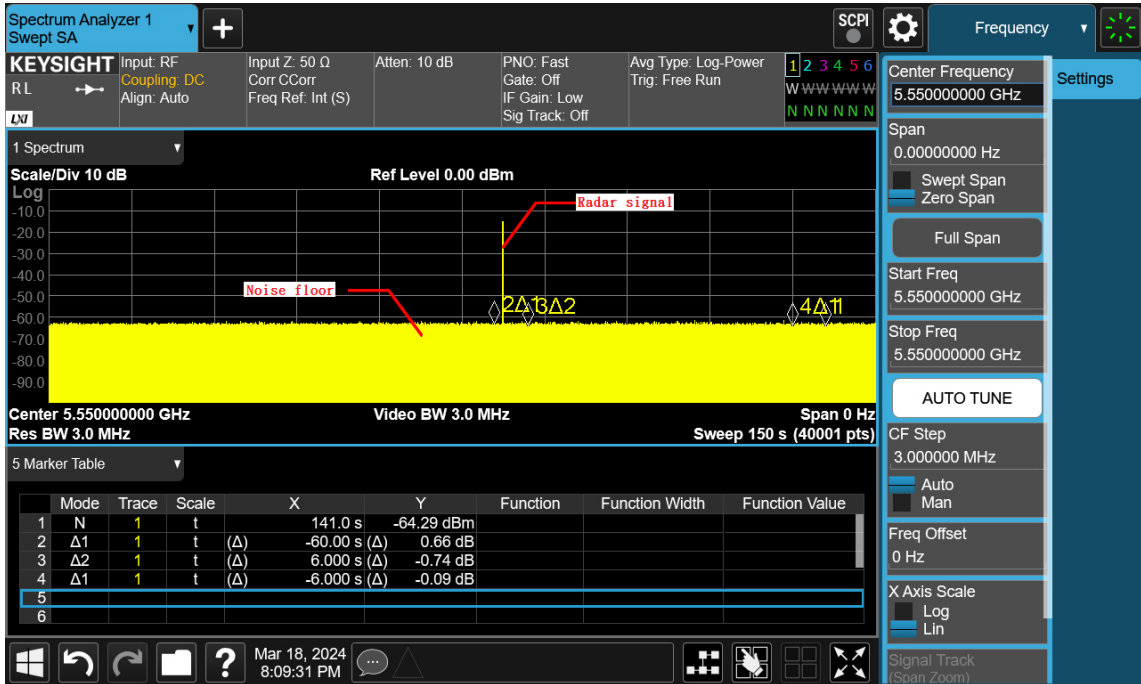


Test Mode UNII-2C, Nominal Bandwidth / Channel: 40 MHz / 5550 MHz

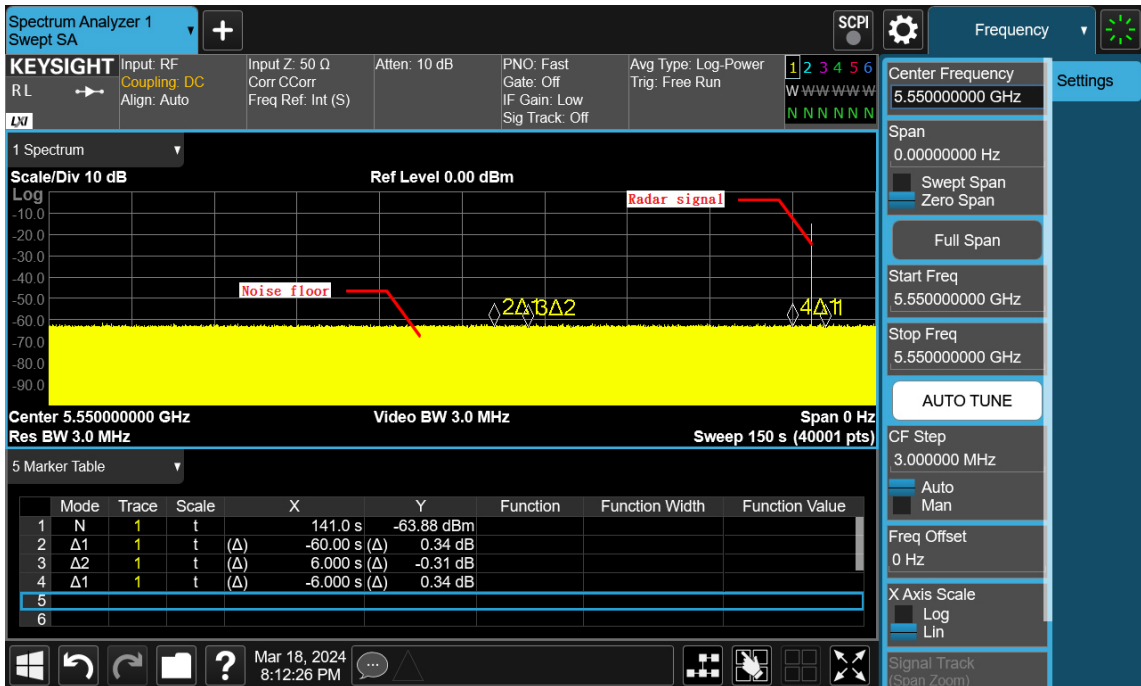
Initial Channel Availability Check Time



Radar Burst at the Beginning of the Channel Availability Check Time



Radar Burst at the End of the Channel Availability Check Time

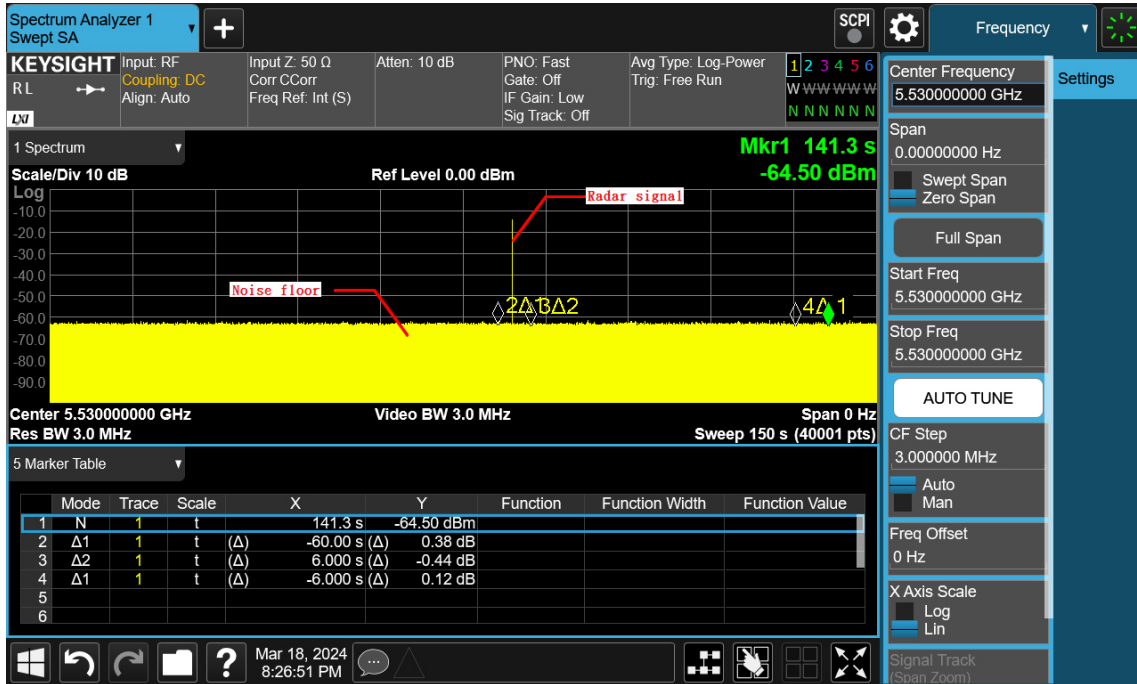


Test Mode UNII-2C, Nominal Bandwidth / Channel: 80 MHz / 5530 MHz

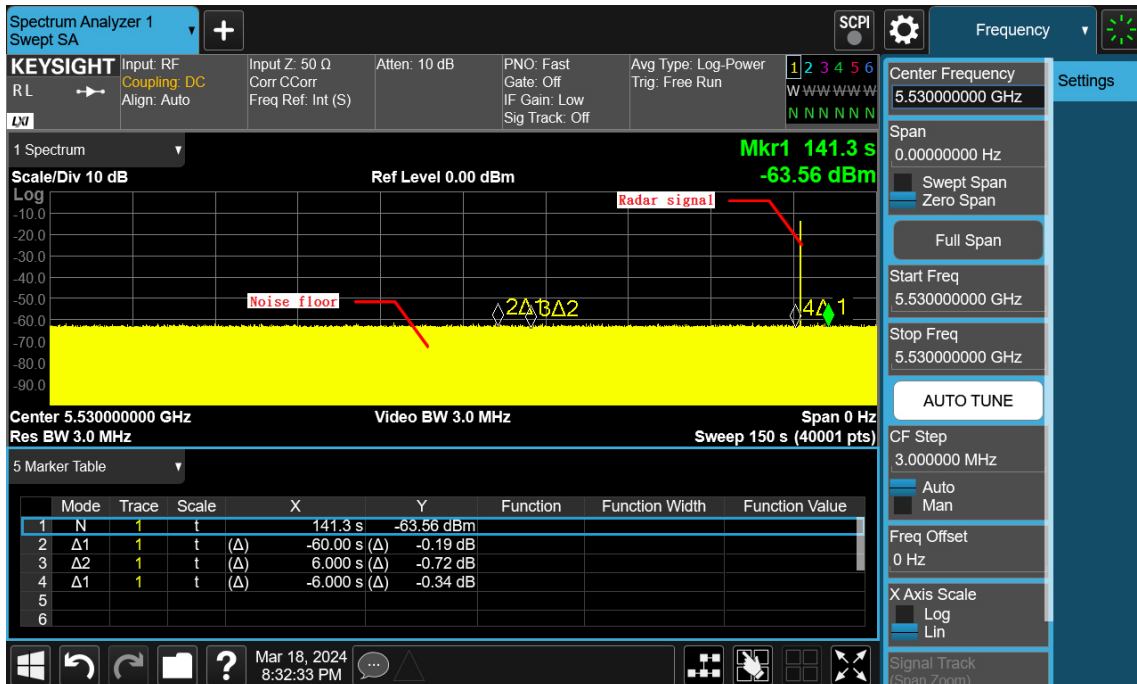
Initial Channel Availability Check Time



Radar Burst at the Beginning of the Channel Availability Check Time



Radar Burst at the End of the Channel Availability Check Time



Test Mode UNII-2C, Nominal Bandwidth / Channel: 160 MHz / 5570 MHz

Initial Channel Availability Check Time

