



Quick Start Guide
快速入門指南

Acer Halo Smart Speaker

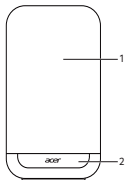
Listen to how it can help

宏碁智慧音箱

智慧小助理，聲控日常大小事

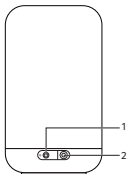
MODEL: HSP3100G

■ A Closer Look



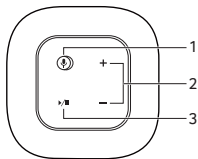
Front

1. LED display*
2. RGB lighting



Back

1. AUX IN jack
2. DC-in jack



Top

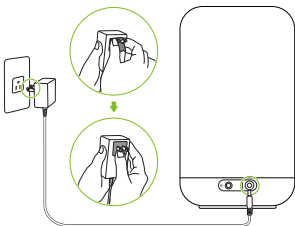
1. Microphone on/off
2. Volume up/down
3. Play/Pause

* The LED display function depends on the different models.

■ Plug In And Power On

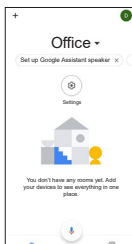
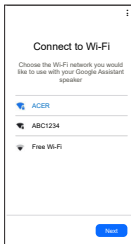
- Insert the power adapter cable into the DC-in jack on the back side of your Smart Speaker.
- Install the included plug as shown in the figure and then plug it into a power outlet.*
- The microphone is ON by default.

* The plug type may vary by regions.



■ Get Started

1. Connect your mobile device to the Wi-Fi network that you'll use for your smart speaker.
2. Get the latest version of the Google Home app and Google app.
3. Make sure your device has Android 5.0 or higher.
4. On your phone or tablet, open the Google Home app. Follow the steps.



■ Using Google Assistant

Easily enjoy music, plan your day, find answers and more, hands-free. Just say, "Hey Google" to get started.

THINGS TO TRY	Example voice commands
Play and control music	Play some music / Increase volume / Pause / Stop
Set reminders	Remind me to buy a cake at 5 PM on Friday
Ask questions	What time is it in London?
Set an alarm	Wake me up at 7 AM every day
Check the weather	What's the weather today?
Plan your day	What is my agenda today?
Control smart home devices	Turn on the lights

Learn more about what Google Assistant can do at:
<http://assistant.google.com/discover/>



■ Personalize The Display

You can have the key messages on the display at a glance, for example:

- Date
- Time
- Timer
- Weather
- Temperature
- Volume

Furthermore, your display can be customized with animations, designed icons or special texts/numbers to share with others. To learn more about it, please visit www.acer.com.

■ Bluetooth Pairing

After finished speaker setup and connect to internet through Google Home app.

Just say "Hey Google, Bluetooth Pairing" and follow voice instruction to pair speaker with your device.

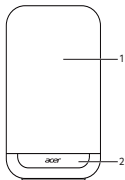


Acer Support

NOTE

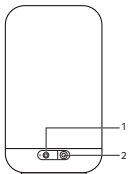
- All images in this document are for reference only. Actual product may vary from image.
- Please visit Acer website for up-to-date information, help and downloads.
- Google, Android, Google Play and Google Home are trademarks of Google LLC.
- Google Assistant is not available in certain languages and countries.
- Apple and iPhone are trademarks of Apple Inc., registered in the U.S. and other countries.

■ 認識您的智慧音箱



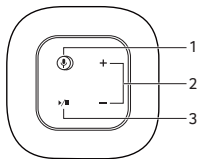
前視圖

1. LED 顯示幕 *
2. RGB 彩色燈光



後視圖

1. AUX 音源輸入插孔
2. DC 電源插孔



上視圖

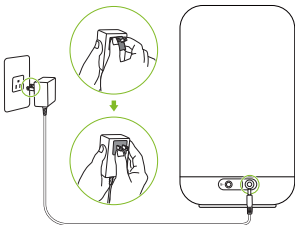
1. 麥克風開啓 / 關閉
2. 音量調高 / 調低
3. 播放 / 暫停

* LED 顯示幕功能會因型號不同而有所差異。

■ 插入電源並開啓

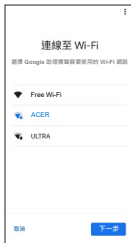
- 將電源變壓器纜線插入智慧音箱背面的 DC 電源插孔。
- 如圖所示安裝隨附的插頭，然後將其插入電源插座。*
- 麥克風預設為開啓狀態。

* 插頭類型可能因地區而異。



■ 開始使用

1. 將行動裝置連上「Google 助理」裝置使用的 Wi-Fi 網路。
2. 取得最新版的「Google Home」應用程式和「Google app」。
3. 請確認您的裝置為 Android 5.0 以上版本。
4. 在您的手機或平板電腦上開啓「Google Home」應用程式。按照畫面上的步驟操作。



■ 使用 Google 助理

免動手就能輕鬆完成居家生活大小事。主要品牌行動號招：只要說出「Ok Google」即可。

我想要這樣做	你可以這樣說
放音樂	放點音樂來聽 / 提高音量 / 暫停 / 停止
提醒我	提醒我晚上 7:00 要去買牛奶
問問題	倫敦幾點鐘了？
設鬧鐘	明天早上 7:00 叫我起床
報天氣	今天天氣如何？
播放與控制音樂 / 媒體	我今天的行事曆有什麼？
控制智慧家電裝置	開燈

想要進一步了解 Google 助理的功能，請造訪：
https://assistant.google.com/intl/zh_tw/



■ 設計個人化的 LED 顯示幕

您可以一目了然地在 LED 顯示幕上顯示重要訊息，例如：

- 日期
- 時間
- 定時器
- 氣象
- 溫度
- 音量

此外，您可以設計動畫、圖示或富藏含義的文字 / 數字來客制化獨一無二的顯示幕，還可以與他人分享。要了解更多資訊，請造訪：www.acer.com。

■ 藍牙配對

智慧音箱設置完成後，透過 Google Home 應用程式連接至網際網路。
只需說「Hey Google，藍牙配對」，然後按照語音提示將智慧音箱與您的裝置配對即可。



Acer 服務支援

注意

- 本指南中的所有圖片僅供參考用。實際產品可能與圖片有所差異。
- 請造訪 Acer 網站以獲取最新資訊、幫助和下載。
- 「Google」、「Android」、「Google Play」和「Google Home」是 Google LLC 的商標。
- 某些語言和國家 / 地區無法使用 Google 助理。
- Apple 和 iPhone 均為 Apple Inc. 在美國及其他國家和地區註冊的商標。

Safety Instructions And Regulations

安全指示與規範

English

■ Information for your safety and comfort

Safety instructions

Read these instructions carefully. Keep this document for future reference. Follow all warnings and instructions marked on the product.

Turning the product off before cleaning

Unplug this product from the wall outlet before cleaning. Do not use liquid cleaners or aerosol cleaners. Use a damp cloth for cleaning.

CAUTION for plug as disconnecting device

Observe the following guidelines when connecting and disconnecting power to the power adapter unit: Install the power adapter unit before connecting the power cord to the AC power outlet.

Unplug the power cord before removing the power adapter unit from the smart speaker.

CAUTION for accessibility

Be sure that the power outlet you plug the power cord into is easily accessible and located as close to the equipment operator as possible. When you need to disconnect power to the equipment, be sure to unplug the power cord from the electrical outlet.

Warnings

- Do not use this product near water.
- Do not place this product on an unstable cart, stand or table. If the product falls, it could be seriously damaged.
- Slots and openings are provided for ventilation to ensure reliable operation of the product and to protect it from overheating. These openings must not be blocked or covered. The openings should never be blocked by placing the product on a bed, sofa, rug or other similar surface. This product should never be placed near or over a radiator or heat register, or in a built-in installation unless proper ventilation is provided.
- Never push objects of any kind into this product through cabinet slots as they may touch dangerous voltage points or short-out parts that could result in a fire or electric shock. Never spill liquid of any kind onto or into the product.
- To avoid damage of internal components, do not place the product on a vibrating surface.

- Never use it under sporting, exercising, or any vibrating environment which will probably cause unexpected short current or damage devices.

Safe listening

Follow these instructions, suggested by hearing experts, to protect your hearing.

- Gradually increase the volume until you can hear it clearly and comfortably and without distortion.
- After setting the volume level, do not increase it after you ears adjust.
- Limit the amount of time listening to music at high volume.
- Avoid turning up the volume to block out noisy surroundings.
- Turn the volume down if you can't hear people speaking near you.

Using electrical power

- This product should be operated from the type of power indicated on the marking label. If you are not sure of the type of power available, consult your dealer or local power company.
- Do not allow anything to rest on the power cord. Do not locate this product where people will walk on the cord.
- If an extension cord is used with this product, make sure that the total ampere rating of the equipment plugged into the extension cord does not exceed the extension cord ampere rating. Also, make sure that the total rating of all products plugged into the wall outlet does not exceed the fuse rating.
- Do not overload a power outlet, strip or receptacle by plugging in too many devices. The overall system load must not exceed 80% of the branch circuit rating. If power strips are used, the load should not exceed 80% of the power strip's input rating.
- This product's power supply is equipped with a three-wire grounded plug. The plug only fits in a grounded power outlet. Make sure the power outlet is properly grounded before inserting the power supply plug. Do not insert the plug into a non-grounded power outlet. Contact your electrician for details.

Product servicing

Do not attempt to service this product yourself, as opening or removing covers may expose you to dangerous voltage points or other risks. Refer all servicing to qualified service personnel.

Unplug this product from the wall outlet and refer servicing to qualified service personnel when:

- The power cord or plug is damaged, cut or frayed.
- Liquid was spilled into the product.
- The product was exposed to rain or water.
- The product has been dropped or the case has been damaged.

- The product exhibits a distinct change in performance, indicating a need for service.
- The product does not operate normally after following the operating instructions.

NOTE

Adjust only those controls that are covered by the operating instructions, since improper adjustment of other controls may result in damage and will often require extensive work by a qualified technician to restore the product to normal condition.

Additional safety information

Your device and its enhancements may contain small parts. Keep them out of the reach of small children.

Disposal instructions



Do not throw this electronic device into the trash when discarding.

To minimize pollution and ensure utmost protection of the global environment, please recycle. For more information on the Waste from Electrical and Electronics Equipment (WEEE) regulations, visit www.acer-group.com/public/Sustainability

Tips and information for comfortable use

Smart Speaker users may complain of headaches after prolonged use. Users are also at risk of physical injury after long hours of listening, bad posture, poor habits, stress, inadequate working conditions, personal health and other factors greatly increase the risk of physical injury.

Incorrect product usage may lead to carpal tunnel syndrome, tendonitis, tenosynovitis or other musculoskeletal disorders. The following symptoms may appear in the hands, wrists, arms, shoulders, neck or back:

- Numbness, or a burning or tingling sensation.
- Aching, soreness or tenderness.
- Pain, swelling or throbbing.
- Stiffness or tightness.
- Coldness or weakness.

If you have these symptoms, or any other recurring or persistent discomfort and/or pain related to speaker use, consult a physician immediately and inform your company's health and safety department.

The following section provides tips for more comfortable product use.

■ Regulations and safety notices

FCC notice

This device has been tested and found to comply with the limits for a Class B digital device pursuant to Part 15 of the FCC rules. These limits are designed to provide reasonable protection against harmful interference in a residential installation. This device generates, uses, and can radiate radio frequency energy and, if not installed and used in accordance with the instructions, may cause harmful interference to radio communications.

However, there is no guarantee that interference will not occur in a particular installation. If this device does cause harmful interference to radio or television reception, which can be determined by turning the device off and on, the user is encouraged to try to correct the interference by one or more of the following measures:

- Reorient or relocate the receiving antenna.
- Increase the separation between the device and receiver.
- Connect the device into an outlet on a circuit different from that to which the receiver is connected.
- Consult the dealer or an experienced radio/television technician for help.

Changes or modifications not expressly approved by the party responsible for compliance could void the user's authority to operate the equipment.

Radiation Exposure Statement

This equipment complies with FCC/IC radiation exposure limits set forth for an uncontrolled environment. This equipment should be installed and operated with minimum distance 20cm between the radiator & your body.

Operations in the 5.15-5.25GHz band are restricted to indoor use only.

Notice: Shielded cables

All connections to other electronic devices must be made using shielded cables to maintain compliance with FCC regulations. In compliance with FCC regulations, use shielded cables to connect to other electronic devices.

Notice: Peripheral devices

Only peripherals (input/output devices, terminals, etc.) certified to comply with the Class B limits may be attached to this equipment. Operation with non-certified peripherals is likely to result in interference to radio and TV reception.

Caution

Acer cannot be held responsible for unauthorized modifications made by the user and the consequences thereof, which may alter the conformity of the product.

Operation conditions

This device complies with Part 15 of the FCC Rules. Operation is subject to the following two conditions: (1) this device may not cause harmful interference, and (2) this device must accept any interference received, including interference that may cause undesired operation.

Notice: Canadian users

This device contains licence-exempt transmitter(s)/receiver(s) that comply with Innovation, Science and Economic Development Canada's licence-exempt RSS(s). Operation is subject to the following two conditions: (1) this device may not cause interference, and (2) this device must accept any interference, including interference that may cause undesired operation of the device.

CAN ICES-3(B)/NMB-3(B)

Remarque à l'intention des utilisateurs canadiens

Cet appareil numérique de la classe B est conforme à la norme NMB-003 du Canada.

Notice for European Union

List of applicable countries

	AT	BE	BG	HR	CY	CZ	DK
	EE	FI	FR	DE	EL	HU	IE
	IT	LV	LT	LU	MT	NL	PL
	PT	RO	SK	SI	ES	SE	

This product must be used in strict accordance with the regulations and constraints in the country of use. For further information, contact the local office in the country of use. Please see https://europa.eu/european-union/about-eu/countries_en for the latest country list.

This equipment complies with the essential requirements of the European Union directive 2014/53/EU. See Statements of European Union Compliance, and more details refer to the attached Declaration of Conformity.

Compliant with Russian / Ukraine regulatory certification



For Power Adapter:

Manufacturer's name: Dongguan Dongsong Electronic Co.,Ltd
Manufacturer's address: Baizhoubian Village, East District, Dongguan, Guangdong, China
Commercial registration number: 914419006730843337
Model identifier: DYS824-160150W-K
Input: 100-240V.a.c. 50/60Hz 0.7A MAX
Output: 16.0Vd.c. 1.5A 24.0W
Average active efficiency: 88.53%
Efficiency at low load (10%): 83.79%
No-load power consumption: 0.06W



EU Declaration of Conformity

We,

Acer Incorporated

8F, 88, Sec. 1, Xintai 5th Rd., Xizhi, New Taipei City 221, Taiwan
Contact Person: Mr. RU Jan, E-mail: ru.jan@acer.com

And,

Acer Italy s.r.l.

Viale delle Industrie 1/A, 20020 Arese (MI), Italy
Tel: +39-02-939-921 ,Fax: +39-02 9399-2913
www.acer.it

Product: Halo Smart Speaker
Trade Name: Acer
Regulatory Model Number: HSP3100G
Marketing Number: Acer Halo Smart Speaker 3100Gx (“x”=0~9, a~z, A~Z or Blank)

We, Acer Incorporated, hereby declare under our sole responsibility that the product described above is in conformity with the relevant Union harmonization legislations: Directive 2014/53/EU on Radio Equipment, RoHS Directive 2011/65/EU and ErP Directive 2009/125/EC. The following harmonized standards and/or other relevant standards have been applied:

- Electromagnetic compatibility

• EN 55032:2015, Class B	• EN 55035:2017	• Draft EN 301 489-17
• EN IEC 61000-3-2:2019	• EN 301 489-1 V2.2.3(2019-12)	V3.2.2(2019-12)
• EN 61000-3-3:2013	• EN 301 489-3 V2.1.1(2019-03)	

- Radio frequency spectrum usage

• EN 300 328 V2.2.2	• EN 300 440 V2.1.1	• EN 301 893 V2.1.1
---------------------	---------------------	---------------------

- Healthy and Safety

• EN 62311:2020	• EN 62368-1: 2014+A11:2017
-----------------	-----------------------------

- RoHS

• EN 50581:2012

- ErP

• Regulation (EU) No. 801/2013; EN 50564:2011

Radio Equipment Type: HSP3100G

Operation frequency and radio-frequency power are listed as below:

Type of Wireless	Operating Frequency	Maximum RF power(EIRP)
BLUETOOTH	2402-2480MHz	8.4 dBm
WLAN	2412-2472MHz	18.8 dBm
	5180-5320MHz	18.0 dBm
	5500-5700MHz	19.5 dBm
	5725-5850MHz	12.3 dBm

Year to begin affixing CE marking: 2020.



RU Jan / Sr. Manager
Acer Incorporated (Taipei, Taiwan)

Sep. 11, 2020

Date

Note: Open the Start Menu and search for 'Acer Documents' for help with setting up a network connection, using the touchpad, and other information which is important for your health and safety.

■ 安全與舒適性的相關資訊

安全指示

請仔細閱讀本安全指示。請妥善保管本文件以便日後的查詢使用。務必遵守標示在本產品上的所有警告與指示訊息。

在清潔之前，請先關掉產品電源

在清潔之前，請拔下電源變壓器的插頭。請勿使用液體或噴霧清潔劑。請使用乾淨的乾布擦拭本產品。

電源中斷注意事項

在連接及中斷電源變壓器的電源時，請注意下列事項：請先安裝電源變壓器，然後再連接至 AC 電源插座。

請先拔除插座的電源線，然後再將電源變壓器從智慧音箱拔除。

電源使用注意事項

請確定要連接的電源插座位在方便取得的位置，並盡可能靠近使用者。需要中斷裝置電源時，請確定拔除電源插座連線。

警告

- 請勿在有水處使用本產品。
- 請勿將本產品置於不穩定的推車、支架或桌子上。若本產品掉落，可能會造成嚴重損壞。
- 產品上的縫隙及開口有通風功效，可確保產品穩定運作並避免過熱。因此請勿擋住或蓋住開口。亦請勿放在床鋪、沙發、地毯及其他相似表面上。請勿將本產品置於散熱器、暖氣設備附近、上方或裝置內部，除非已提供適當的通風設備。
- 請勿將任何種類的物體塞入本產品的縫隙中，以免接觸到危險的高壓點或短路部分，而造成火災或電擊。請勿潑灑任何種類的液體於本產品的上方或內部。
- 為避免損壞內部零件，請勿將本產品置於震動的表面上。
- 請勿在從事體育活動、運動，或任何震動的環境下使用本產品，這可能會導致產品意外短路或損壞。

保護聽力

請遵循聽力專家的建議，以保護您的聽力。

- 逐漸增加音量，直到您能清晰舒適地聆聽音樂。
- 請勿在耳朵已習慣的音量設定後又增加音量。
- 限制用高音量聆聽音樂的時間。

- 避免藉由提高音量來阻隔周遭的雜音。
- 若您無法聽見他人對您說的話，請降低音量。

電力使用

- 本產品僅可使用標籤上所規定的電壓進行操作。如果您不確定該使用何種電源，請向經銷商或當地電力公司尋求協助。
- 請勿在電源線上面放置任何物品。請勿將本產品放置在人會踩踏到電源線的地方。
- 使用延長線時，請注意插在同一延長線的電器設備使用電量不可超過延長線的電流負荷量。同時，同一插座的耗電量也不可超過保險絲的負荷量。
- 請勿將電源插座、延長線或插座與太多裝置連接，以免負荷量過重。整體的系統負載量不得超過分支電路功率的 80%。如果使用的是延長線，則其負載量不應超過延長線輸入功率的 80%。
- 本產品隨附的電源變壓器配有三線式接地插頭。該插頭僅能插在接地插座上。請確認該插座已確實接地再插上電源變壓器的插頭。請勿將插頭插在尚未接地的插座上。若需要任何專業建議，請諮詢電器技師。

產品維護

請勿嘗試自行維修產品，因為打開或拆開蓋板可能有觸電或其他危險。任何維修服務請洽詢合格的服務專員。

遇到下列情況時，請先拔除牆上的插頭，再連絡合格的維修人員：

- 當電源線或插頭損壞、裂開、或磨損時。
- 當液體潑濺到產品上時。
- 當產品淋到雨或水時。
- 當產品掉落或外殼受損時。
- 產品出現明顯的效能異常時，表示需要維修。
- 依照手冊操作指示的情況下，產品仍無法正常操作。

注意

您只能調整操作指示中提及的控制項，未正確調整其他控制項可能會造成毀損，且需要由合格的維修人員進行經常性的維修，才能讓產品恢復正常狀態。

額外的安全資訊

您的裝置與其配件可能含有小零件。請放置在兒童無法拿取之處。

環保聲明



丟棄此電子裝置時，請勿丟入垃圾桶中。

為減少汙染及確保能保護全球環境，請回收本產品。如需更多廢電機電子設備 (WEEE) 規定的資訊，請至 www.acer-group.com/public/Sustainability

使用舒適性的提示與資訊

使用者可能會抱怨因長時間使用智慧音箱而產生頭痛的問題。使用者也會因長時間聆聽、不當姿勢、不良習慣、壓力、不舒適的工作環境、個人健康與其他要素等等，而增加身體受傷的發生機率。不正確的產品使用方式可能導致腕隧道症候群、肌腱炎、韌鞘炎或其他肌肉與骨骼的不適。下列症狀可能出現在手部、腕部、手臂、肩膀、頸部或背部：

- 麻木、灼熱或刺痛感。
- 疼痛、痠痛或觸痛感。
- 強烈不適感、腫脹或抽痛。
- 僵硬感或緊繃感。
- 感到寒冷或虛弱。

如果您有以上症狀或與任何跟使用音箱有關而造成循環或持續的不舒適感與疼痛，請立即洽詢內科醫生，並通知您服務單位內的健康與安全管理部門。

為更正正確舒適地使用本產品，請遵循以下建議。

■ 規範和安全注意事項

FCC 注意事項

本產品經過測試並判定符合 B 級數位設備限制，且遵照 FCC 條例第 15 節。這些條件之訂定，乃為合理保護住家安裝環境不受有害干擾。本產品會產生、使用並發射無線電頻率能量，若您未按指示來安裝與使用，可能會對無線電通訊造成有害干擾。

然而，FCC 也不保證任何一種安裝方式都不會造成干擾。如果本產品對收音機或電視接收造成有害干擾（可經由打開或關閉本產品而確認），則使用者可嘗試利用下列方式進行調整：

- 重新調整接收天線的角度與位置。
- 增加裝置與接收器之間的距離。
- 裝置與接收器的電源插座不要共用。
- 如需協助，請洽詢經銷商或專業的收音機 / 電視技術人員。

未經主管機關明確核准的變更或修改將導致使用者喪失操作本設備的權利。

輻射暴露聲明

本裝置符合針對不受控制之環境所制定的 FCC/IC 輻射暴露限制。此裝置應於電暖器及您的身體之間距離至少 20 公分處安裝及操作。

在 5.15 至 5.25 GHz 頻段範圍內的操作僅限於室內使用。

公告：屏蔽纜線

與其他電子裝置的所有連接必須使用屏蔽纜線，以確保符合 FCC 規定。為了符合 FCC 規定，請使用屏蔽纜線連接到其他電子裝置。

公告：週邊裝置

本產品僅能安裝符合 B 級限制的合格週邊裝置（輸入 / 輸出裝置、端子等）。使用不合格的週邊裝置可能對收音機和電視訊號的接收產生干擾。

警告

Acer 對於使用者在未經授權下對本產品進行的任何修改及後續結果概不負責，此類修改將讓產品不再符合規定。

使用條件

本產品符合 FCC 條例第 15 節限制。操作時，請遵循下列兩項條件：(1) 本產品不得產生傷害性干擾，且 (2) 本產品必須接受任何接收到的干擾訊號，包括可能導致非預期操作的干擾。

公告：加拿大使用者

本產品包含符合加拿大創新，科學和經濟發展局免授權 RSS 標準的免授權發送器 / 接收器。操作時，請遵循下列兩項條件：(1) 本產品不得產生傷害性干擾，且 (2) 本產品必須接受任何接收到的干擾訊號，包括可能導致非預期操作的干擾。

CAN ICES-3(B)/NMB-3(B)

Remarque à l'intention des utilisateurs canadiens

Cet appareil numérique de la classe B est conforme à la norme NMB-003 du Canada.

公告：歐盟

適用國家清單

	AT	BE	BG	HR	CY	CZ	DK
	EE	FI	FR	DE	EL	HU	IE
	IT	LV	LT	LU	MT	NL	PL
	PT	RO	SK	SI	ES	SE	

本產品必須確實遵守各國的使用法規及限制。相關詳細資訊，請洽當地辦事處。關於最新的國家清單，請至 https://europa.eu/european-union/about-eu/countries_en。

本產品符合歐盟 2014/53/EU 指令的基本需求。請參閱「歐盟法規遵循聲明」，並參閱隨附的「符合聲明」以瞭解詳細資訊。

台灣

取得審驗證明之低功率射頻器材，非經核准，公司、商號或使用者均不得擅自變更頻率、加大功率或變更原設計之特性及功能。

低功率射頻器材之使用不得影響飛航安全及干擾合法通信；經發現有干擾現象時，應立即停用，並改善至無干擾時方得繼續使用。前述合法通信，指依電信管理法規定作業之無線電通信。低功率射頻器材須忍受合法通信或工業、科學及醫療用電波輻射性電機設備之干擾。

符合俄羅斯 / 烏克蘭法規認證



商品名稱：宏碁智慧音箱

型號：HSP3100G

額定電壓：16 伏特

生產國別：中國製造

產品功能 / 方法：參考使用手冊

進口商 / 委製商：宏碁股份有限公司

進口商 / 委製商地址：新北市汐止區新台五路一段 88 號 8 樓

進口商 / 委製商電話：(02)-2696-0099

緊急處理方法：洽購經銷商或服務專線：(02)-2696-0099

臺灣 RoHS

本產品符合臺灣 RoHS 標準 CNS15663

設備名稱：宏碁智慧音箱		型號 (型式)：HSP3100G				
Equipment name: Acer Halo Smart Speaker		Type designation (Type): HSP3100G				
單元 Unit	限用物質及其化學符號 Restricted substances and its chemical symbols					
	鉛 Lead (Pb)	汞 Mercury (Hg)	鎘 Cadmium (Cd)	六價鉻 Hexavalent chromium (Cr ⁺⁶)	多溴聯苯 Polybrominated biphenyls (PBB)	多溴二苯醚 Polybrominated diphenyl ethers (PBDE)
變壓器	○	○	○	○	○	○
電路板組件	—	○	○	○	○	○
塑膠外殼	○	○	○	○	○	○
揚聲器組件	○	○	○	○	○	○

備考 1: 「超出 0.1 wt %」及「超出 0.01 wt %」係指限用物質之百分比含量超出百分比含量基準值。
Note 1: "Exceeding 0.1 wt %" and "exceeding 0.01 wt %" indicate that the percentage content of the restricted substance exceeds the reference percentage value of presence condition.

備考 2: 「○」係指該項限用物質之百分比含量未超出百分比含量基準值。
Note 2: "○" indicates that the percentage content of the restricted substance does not exceed the percentage of reference value of presence.

備考 3: 「—」係指該項限用物質為排除項目。
Note 3: The "—" indicates that the restricted substance corresponds to the exemption.

- French:

Le présent appareil est conforme aux CNR d'Industrie Canada applicables aux appareils radio exempts de licence. L'exploitation est autorisée aux deux conditions suivantes :

(1) l'appareil ne doit pas produire de brouillage, et

(2) l'utilisateur de l'appareil doit accepter tout brouillage radioélectrique subi, même si le brouillage est susceptible d'en compromettre le fonctionnement." Déclaration d'exposition aux radiations

Cet équipement est conforme aux limites d'exposition aux rayonnements FCC / IC définies pour un environnement non contrôlé. Cet équipement doit être installé et utilisé avec une distance minimale de 20 cm entre le radiateur et votre corps. Les opérations dans la bande 5,15-5,25 GHz sont limitées à une utilisation en intérieur uniquement.