

Chapter 7: The Fingerprint Reader

Security settings

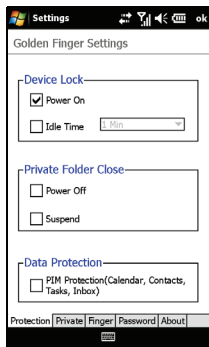
Your Acer M900DF Smartphone has an integrated fingerprint reader that you can use to secure your phone and personal information or as a navigation device. To start using the security features of your phone, you will need to enroll your fingerprint as described in **“Set up fingerprint security”** on **page 19**.

Once you have successfully enrolled your fingerprint, you will be able set up a private folder and other security settings.

To set up security, tap **Start > Settings > Golden Finger** and swipe your enrolled finger or enter your password (default is four zeroes: 0000). Tap the **Protection** tab to adjust the settings.

From the Protection tab, you can choose to require a fingerprint when starting up your Acer M900DF Smartphone and how long to wait before locking the phone again. You can also elect to protect your personal information.

Select the **Finger** tab to enroll another finger. From the **Password** tab, you can change the default password and enter a hint to remind you.





Note: The password should be between four and 12 alphanumeric characters. Ensure it is a password you won't forget and that other people won't be able to guess easily.

Private Folder

Your Acer M900DF Smartphone supports a Private Folder that is only accessible via a fingerprint or password. To set up the private folder, tap **Start** > **Settings** > **Golden Finger** > **Private** tab.



Important: You can only have one private folder on the phone. If you wish to set up a new private folder, you will need to delete any existing folder first.

From this tab you can give your private folder a name, set how large it will be and where it will be located. Tap **Create** to create the folder with the parameters you set.

To open the private folder, you can simply tap **Private Folder** at the bottom of the Home page.

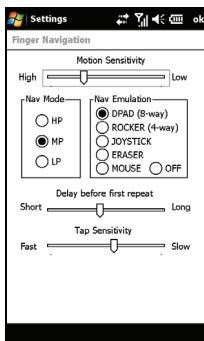


Navigate with the fingerprint reader

To enable the fingerprint reader navigation features, tap **Start** > **Settings** > **System** tab > **Finger Navigation**. You can use the fingerprint reader to navigate around the screen by sliding your finger across the reader. The navigation feature can perform many of the same actions as a mouse on a computer.

Once you've moved the cursor to the desired location, tap the fingerprint reader lightly to activate a link, launch a program or do any other function that would normally be done by right-clicking a mouse.

The top slider adjusts the sensitivity of the fingerprint reader, controlling how fast the mouse or cursor moves when the reader detects finger motion. Higher sensitivity settings will result in faster mouse/cursor motion with relatively less finger motion.



Nav Mode determines the performance mode, which controls how quickly readings are taken as you slide your finger on the reader.

Mode	Description
HP	Higher Performance: Requires higher power and drains the battery faster.
MP	Medium Performance: Offers the optimal balance between performance and battery life.
LP	Lower Performance: Offers the best battery life.

The *Nav Emulation* feature has the following settings:

Mode	Description
DPAD	Gives you 8-way directional control. It simulates the up, down, left and right arrow keys on the keyboard.
Rocker	Mimics a 4-way rocker control, which allows motion in only one direction at any time.
Joystick	Emulates a 4-way joystick using simulated arrow key presses.

Mode	Description
Touch stick	Delivers mouse movement in any direction with instant automatic motion repeat and has tapping enabled (has a similar action to a touch stick embedded in a notebook keyboard).
Mouse	Delivers mouse movement in any direction and has tapping enabled.
Off	Navigation features will not be used.

When you select DPAD, Rocker or Joystick emulation, a *Delay before first repeat* control will be displayed. Use this control to set the delay between the first motion and repeat motions.



.....
Tip: When the slider is moved fully over towards “Long”, the time delay is infinite, and you must remove your finger from the reader before another motion is generated.

The *Tap Sensitivity* control is used to adjust tap settings. The default value that should be acceptable to a wide range of users. If you move the slider towards “Slow,” you can rest your finger on the reader for a longer period while still being able to tap.



.....
Tip: To disable tapping, move the slider all the way over to “Fast.” This effectively disabled tapping since it is impossible to tap that quickly.

Chapter 8: Advanced Operation

Put your Acer M900DF Smartphone in flight mode

You can enter flight mode to turn off telephone, Bluetooth and WLAN functions and use the Acer M900DF Smartphone as a handheld device during a flight. Check with your airline to make sure this is permitted onboard.


Some airlines may provide wireless Internet services on board that can be accessed via the WLAN feature. Check prior to your departure whether this service is available on your flight.

Switch your Acer M900DF Smartphone off during takeoff and landing as it may interfere with aircraft electronic systems.

Enter flight mode

1. Access the Comm. Manager (refer to **“Comm. Manager”** on page 66).
2. Tap Flight Mode **ON** to turn off all phone, Bluetooth and WLAN functions.



Tip: Press and hold  for five seconds to exit flight mode and re-activate wireless connections (note: only connections that were enabled prior to entering flight mode will be re-activated).



Comm. Manager

Your Acer M900DF Smartphone features phone, Bluetooth and WLAN functions. This section will explain how to activate and set basic phone, Bluetooth and wireless network (WLAN) connection settings through the Comm. Manager screen.



Tip: Tap and hold the name of any communication type to open its associated Settings page.

Use the Comm. Manager

To access the Comm. Manager, tap any of the communication icons at the top of the screen or **Start > Programs > Comm. Manager**.

Activate or deactivate connections

You can choose to activate one or all connections from the Comm. Manager window.

Each connection icon will be highlighted when turned on.

Adjust connection settings

This section will show you how to adjust detailed settings for your phone, wireless and Bluetooth connections.

Phone connections

Once you have inserted a SIM card, the Acer M900DF Smartphone will automatically detect your network provider.

For all phone settings, tap **Settings > Phone**. Here you can adjust ringtone, security, services, network and CB (Cell Broadcast) settings.

Adjust phone connection settings

You can use the Connection Wizard to configure country and network settings for your phone connection, as well as create customized phone connections.

1. Tap **Start** > **Settings** > **Connections** tab > **Connection Wizard**.
2. Select your country and network operator from the lists.
3. Tap **OK** to confirm and save.

To detect these settings automatically, tap **Search**.

To edit network parameters, tap **Edit**.

Once all settings are complete, tap **OK** to confirm and save.

Create and edit new phone connections

If your country is not listed, or you want to create a customized GPRS or CSD connection, refer to 'Creating a new connection' in the Phone Data Manager Help menus for detailed information on how to do this.

Select a network

You can set the Acer M900DF Smartphone to detect your network automatically or set it manually.

Detect a network automatically:

1. Tap **Start** > **Settings** > **Phone** > **Network** tab.
2. Select **Automatic** from the **Network Selection** list.
3. Tap **Find Network**. Your network will be automatically detected.

Select a network manually:

1. Tap **Start** > **Settings** > **Phone** > **Network** tab.
2. Select **Manual** from the **Network Selection** list. A list of available networks will appear.

3. Select a network from the list and tap **OK**.

When your current network is unavailable, tap **Select** to select another network to use.



.....
Note: Contact your service provider should you have any problems obtaining voice mail and the text message service center numbers.
.....

Adjust wireless network settings

You can use your Acer M900DF Smartphone to connect to a wireless local area network (WLAN) to exchange information with your PC or network and access the Internet.

If there are multiple WLANs available, your Acer M900DF Smartphone will prompt you to choose a network when you activate the WLAN function. Select a network and specify whether it will be used primarily for **Work** or **The Internet**. The Acer M900DF Smartphone will save your settings and connect to your chosen network.

Wireless power management

When activated, wireless connections use considerable battery power so we recommend customizing power management options to get the most out of your battery.



.....
Note: When battery power is lower than 20 percent, a notification message will appear asking if you want to continue using wireless functions or not.
.....

You can create, view and edit all available wireless networks in your area, and configure network adapter card settings.

View wireless networks

1. Tap **Start > Settings > Connections** tab > **Wi-Fi > Wireless** tab.
2. Scroll through the list to view all available networks.
3. Tap the **Networks to access** list to sort by **All available**, **Only access points** or **Only computer-to-computer** connections.

Create new wireless network connections

1. Tap the **Start > Settings > Connections** tab > **Wi-Fi > Wireless** tab.
2. Tap **Menu > Add New...** from the list.
3. Enter all required information to configure the wireless network. Refer to the Help menus to guide you through the configuration screens for each setting.

Edit wireless network connections

1. Tap the **Start > Settings > Connections** tab > **Wi-Fi > Wireless** tab.
2. Select a connection from the list.
3. Tap **Menu > Edit**.
4. Enter all required information to configure the wireless network. Refer to the Help menus to guide you through the configuration screens for each setting.

Adjust network adapter settings

1. Tap **Start > Settings > Connections** tab > **Wi-Fi > Network Adapters** tab.
2. Select a network adapter from the list.
3. Tap **Edit**.
4. Select to use a server-assigned IP address or enter a specific IP address.
5. Tap **OK** to confirm and save.

Adjust Bluetooth settings

You can create and adjust Bluetooth connections, accessibility settings and service settings to get the most out of the Acer M900DF Smartphone's Bluetooth functions.

Bluetooth connections

You can use Bluetooth to exchange information between your Acer M900DF Smartphone and other mobile devices.

For all Bluetooth settings, tap **Settings** > **Connection** tab > **Bluetooth**. Here you can adjust Bluetooth profiles, status, accessibility, and services settings. You can also view version information.

Create new bluetooth connections

The simplest way to set up and configure a new Bluetooth connection is to use the Bluetooth Manager.

1. Tap **Start** > **Settings** > **Connections** tab > **Bluetooth** > **Devices** tab.
2. Tap **Add new device...** Your Acer M900DF Smartphone will search for devices in range.
3. Select the device you want to connect to.
4. Tap **Next** and follow all onscreen instructions to set up the connection.

Adjusting Bluetooth visibility

1. Tap the **Start** > **Settings** > **Connections** tab > **Bluetooth** > **Mode** tab.
2. Select whether to turn the Bluetooth function **On** or **Off** and whether the device should be visible to other devices or not.
3. Tap **OK** to confirm and save.

Setting up COM ports

1. Tap the **Start > Settings > Connections** tab > **Bluetooth > COM Ports** tab.
2. Follow the onscreen instructions to register the connected Bluetooth devices as an effective COM port.

Phone settings

Many phone settings are automatically configured by your Acer M900DF Smartphone when you insert a SIM card. The device will communicate with your service provider and automatically obtain all necessary settings, such as network name, voice mail and text message center numbers.

You can, however, view and modify these settings yourself if necessary, through the Phone Settings screen.

Tap **Start > Settings > Personal** tab > **Phone**.

Configure caller options

You can configure certain caller options to keep control over your incoming and outgoing calls.

Bar outgoing or incoming calls using call barring; choose who to display your identity to with caller ID; specify a number to which calls can be forwarded if you are unavailable using call forwarding; choose to be notified if an incoming call is waiting using call waiting.

Set up caller ID

1. Tap **Start > Settings > Personal** tab > **Phone > Services** tab.
2. Select **Caller ID** from the list and tap **Get Settings**.
3. Select who to provide your caller ID to.
4. Tap **OK** to confirm and save.

Set up call forwarding

1. Tap **Start** > **Settings** > **Personal** tab > **Phone** > **Services** tab.
2. Select **Call Forwarding** from the list and tap **Get Settings**.
3. Specify whether to forward all calls or only under certain conditions. Tap the checkboxes to select the option you require and enter number(s) to which the calls will be forwarded.
4. Tap **OK** to confirm and save.

Set up call waiting

1. Tap **Start** > **Settings** > **Personal** tab > **Phone** > **Services** tab.
2. Select **Call Waiting** from the list and tap **Get Settings**.
3. Select whether to be notified or not when a call is waiting.
4. Tap **OK** to confirm and save.



.....
Note: Refer to the Help menus for more detailed information on adjusting phone settings.
.....

Choose a profile and ring tone

A profile contains settings for alert notification, device volume, ring type and tone.

1. Tap **Start** > **Programs** > **Phone** > **Sound Profiles**. There are three profiles:

Profile	Description
Normal	The default profile. Call alert levels are set to medium.
Vibrate	Intended for discreet use. Call alert is muted and set to vibrate.
Silent	Call alert is muted and vibrate is turned off.

2. Select a profile and use the lists and sliders to adjust settings to customize your profile.
3. Tap **Advance** to set further options for each profile.

4. Tap **OK** to confirm and save.

Manage contacts

Your Acer M900DF Smartphone features an address book that allows you to save contacts to either the internal memory or onto your SIM card.

Further options are explained in this section that are accessible via the Contact screen menu. To access the menu, tap **Menu** and use the 3-way rocker key to scroll up and down the menu.

Add and edit contacts

To add a new contact:

1. Enter the telephone number on the Phone screen.
2. Tap **Menu > Save to Contacts**.
3. Tap **<New Contact>** and select whether this is a **SIM Contact** or **Outlook Contact**.
4. Enter the required information.
5. Tap the **Notes** tab to enter any additional information for the contact.
6. Tap **OK** to save.

You can choose to save contacts directly to your SIM card. This is useful if you use your SIM card with multiple phones and you always need your address book to hand.



.....
Note: You can only enter a contact name and telephone number when creating a new SIM contact. If more information is required, create a regular phone contact.
.....

Edit a contact

1. Tap **Start > Contacts**.
2. Tap on the contact you want to edit.

3. Tap **Menu > Edit**.
4. Edit the contact information and tap **OK** to save.

Copy contacts

You can copy contacts stored in internal memory to your SIM card, and vice versa.

Copy a contact from internal memory to the SIM card



.....
Note: Copying a contact from internal memory to your SIM will only copy the contact's name and phone number. Names longer than 14 characters will be truncated.
.....

1. Tap **Start > Contacts**.
2. Tap the internal memory contact you want to save.
3. Tap **Menu > Copy Contact > To SIM**.
4. Edit the information as required.
5. Tap **OK** to save the contact to your SIM card.

Copy a contact from the SIM card to internal memory

1. Tap **Start > Contacts**.
2. Tap the SIM contact you want to save.
3. Tap **Menu > Copy Contact > To Contacts**.
4. Edit the information as required.
5. Tap **OK** to save the contact to your internal memory.

Send contacts via text or beam

You can send your contacts details to other phones using text messaging or via beam.

Send contacts via message

1. Tap **Start > Contacts**.
2. Select a contact.
3. Tap **Menu > Send Contact > Messages**.
4. Select the contact information you want to send and tap **Done**.
5. Specify a recipient and tap **Send**.

Send contacts via beam

1. Tap **Start > Contacts**.
2. Select a contact.
3. Tap **Menu > Send Contact > Beam**.
4. Select the Bluetooth device to send the contact to.

Delete contacts

To free up space on either the internal memory or on your SIM card, you can delete contacts from your address book.

1. Tap **Start > Contacts**.
2. Select a contact.
3. Tap **Menu > Delete Contact**.
4. Tap **Yes** to permanently delete the contact.

Assign a ring tone and picture to specific contacts

You can assign a specific ringtone and picture to a particular contact so they are easily identifiable when they call.

1. Tap **Start > Contacts**.
2. Tap on the contact you wish to assign a ringtone/picture to.
3. Tap **Menu > Edit**.

4. Tap **Select a picture...** to open My Pictures. Tap the desired picture to assign a picture to the contact.
5. Scroll to **Ringtone** and tap the field. Select a ringtone from the drop-down list.
6. Tap **OK** to confirm and save.

Namecard Manager

Namecard Manager is an application that integrates optical character recognition and a contact list with the camera function. It provides tools for converting data on namecards to a digital format that can be integrated into a unified Contact list.

Tap **Start > Programs > Multimedia > Namecard Manager**.

Recognize namecard information

Place the namecard on a flat surface and tap **Recognize** to display the namecard on the screen. Press the Camera button halfway down to focus on the namecard and all the way down to take a photo.



Tip: Before taking the picture, the following pointers help to improve recognition quality.

If the original name card is a landscape design, it is recommended to rotate the Acer M900DF Smartphone before taking the picture.

Hold the camera lens 10 to 12 cm above the namecard.

Move the camera up and down so that the namecard is framed by the red markers in the four corners of the screen.

Tap **Language** to select the language used on the namecard and **Identify** to run OCR and insert the details into the contact list.

You may modify the recognized text by tapping on a field. The image of the namecard will be repositioned so you can confirm the contents. Select the field to modify and correct any errors using the keyboard or onscreen keyboard.

Manage namecard information

Tap **Manage** to open the namecard database.



Note: The database only stores images and information for namecards that have already been recognized.

Tap the “Wand” icon in the upper right-hand corner of the screen to open a letter table. Tap a letter to display the information for all the namecards filed under that letter.

Select a namecard to expand its contents and view the original picture of the namecard.

Tap **Menu** to show the menu:

- **New:** Create a new digital name card.
- **Import:** Import and recognize an existing picture of a namecard. Supported formats are BMP, JPG and PNG.
- **Edit:** Modify the name card information.
- **Delete:** Delete the selected name card.

SIM Manager

SIM Manager allows you to manage your SIM phonebook and to copy the phonebook entries to Contacts. To start SIM Manager, tap **Start > Programs > Phone > SIM Manager**.

The standard display mode is to show your SIM contacts and Contacts entries at the same time. You may change this by tapping **SIM**, **Contact** or **Standard** at the bottom of the screen.

You can sort your contacts by tapping **Name** or **Pos** (only for SIM contacts) at the top of the list of contacts.

Tap and hold on a contact to **Dial** that contact's number, **Send SMS**, **Edit**, **Delete** or **Copy to Contact/SIM**.

Tap **Menu** at the bottom of the screen to reveal:

New SIM Contact: Add a new phonebook entry to the SIM card.

Refresh: Refresh the contact lists.

SMS Management: Enter the SMS management screen.

SIM Information: View your SIM card information.

My Phone Numbers: Displays the information of the inserted SIM card

About: View the version and copyright information of SIM Manager.

Copy contact information

You can copy contact information to/from the Contacts list from/to the SIM card. You may copy individual contacts, multiple contacts or all contacts.

- To copy all contacts, tap the box alongside Name: Tap and hold any contact and select **Copy to Contact/SIM**.
- To copy multiple contacts, tap the box alongside each contact: Tap and hold any contact and select **Copy to Contact/SIM**.
- To copy a single contact, tap and hold any contact, and select **Copy to Contact/SIM**.

SMS Management

Tap **Menu > SMS Management** to enter the SMS management screen and display SMS content on the SIM card.

Double tap the number in the Pos column to view the corresponding SMS.

To delete an SMS, select the SMS and then **Del selected SMS**.

Connect to a PC and install software

You can use Microsoft ActiveSync (on Windows XP) or the Windows Mobile Device Center (on Windows Vista) to synchronize the information on your computer with the information on your Acer M900DF Smartphone, comparing and updating data on both locations. This serves as backup data in case something happens to your Acer M900DF Smartphone.

Connect to a PC

The packaged mini USB sync cable enables you to synchronize the information on your Acer M900DF Smartphone with the data on your computer using ActiveSync.

Plug the mini USB sync cable into the mini USB connector on your Acer M900DF Smartphone. Plug the USB client connector into an available USB port on your computer.



Configure USB to PC settings

You can enable advanced networking to enhance your USB to PC connection, should you be experiencing any problems synchronizing your data with ActiveSync.

1. Tap **Start > Settings > Connections tab > USB to PC.**
2. Check the **Enable advanced network functionality** checkbox to enable.

3. Tap **OK** to confirm and save.

Other functions

Manage your calendar

You can set appointments and event reminders with the calendar feature.

Set a new appointment:

1. Tap **Start > Calendar**.
2. Tap **Menu > New Appointment**.
3. Enter appointment information and reminder frequency.
4. Tap **OK** to confirm and save.

To edit an appointment, tap the entry and then tap **Edit** to open the appointment entry screen.

Create tasks

Tasks can be set to remind you of specific things you must do and the completion deadlines.

Create a new task

1. Tap **Start > Programs > Tasks**.
2. Tap **Menu > New Task**.
3. Enter all task information, start and due dates and how often to be reminded.
4. Tap **OK** to confirm and save.

To edit an appointment, tap the entry and then tap **Menu > Edit** to open the task entry screen.



.....
Note: For more information on other options available in the calendar and task screens, refer to the Help menus.
.....

Browse the Internet

In order to browse the Internet with your Acer M900DF Smartphone, you must be connected to a 3G or wireless network or to a computer with an Internet connection via ActiveSync.

Tap **Start** > **Internet Explorer** to open the browser.

To adjust your browser settings, tap **Menu** > **Tools** > **Options**.

Start Windows Live:

1. Tap **Start** > **Programs** > **Windows Live**.
2. Sign in with your email address and password and your contacts list appears.

Multimedia playback

Your Acer M900DF Smartphone comes supplied with a variety of programs that you can use to enjoy multimedia content.

FM Tuner

FM Tuner allows you to listen to your favorite local radio stations and save them to an easily-accessible list of favorites.

To start FM Tuner tap **Start** > **Programs** > **Multimedia** > **FM Tuner**.

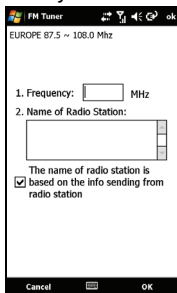
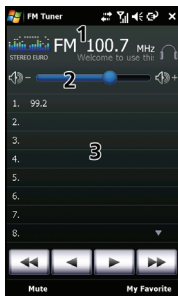


.....
Note: You will need to connect your headset to enjoy radio programs.
.....

The FM Tuner screen indicates the frequency the tuner is receiving (1), volume level (2) and your defined favorites (3).

Tap the frequency display to open a number pad that allows you to enter a different frequency.

Tap **My Favorite** to manage your list of favorite radio stations. To add a favorite, select the position in the list that you'd like to add the favorite at, and tap **+** to open the frequency allocation window. Enter the frequency using the keyboard.



Important: There are restrictions on the range of frequencies that may be legally listened to in many countries. The FM Tuner on your Acer M900DF Smartphone has three predefined geographical regions: EUROPE, JAPAN and USA. You may only set a frequency within the range specified for each region.

Use Windows Media Player

You can use Windows Media Player to play videos you have taken with your Acer M900DF Smartphone as well as other media files, such as MP3 music files.

The following formats are supported:

Type	Formats
Audio	WMA, MP3, WAV, AAC
Video	WMV

Play video or audio files

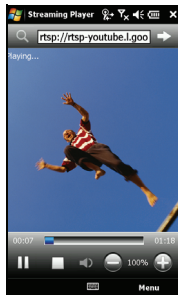
1. Tap **Start > Programs > File Explorer**.
2. Locate the file to playback, and tap once to play it in Windows Media Player.

Streaming Player

Steaming Player allows you to view streamed video off the Internet directly on your phone.

If you try to open an audio or movie video that is not supported by Microsoft Windows Media Player, for example RTSP or HTTP, the system will automatically switch to Streaming Player.

Alternatively tap **Start > Programs > Multimedia > Streaming Player** to manually launch the player. You can enter the address of the content you wish to access in the address bar.



Tap anywhere on the playback window to display the content full-screen. Tap the screen again to return to the normal display mode.

Satellite Data Update



.....
Warning: Satellite Data Update is not supported in the USA.
.....

Tap **Start > Programs > GPS > Satellite Data Update.**

You may need to log into your provider's server to download instant satellite data and enable the GPS function.



.....
Note: All the following connections allow your Acer M900DF Smartphone to download the latest GPS data. If there is more than one connection available, the system will automatically select the best connection, in the following order: Sync connection to PC; WLAN; GPRS (not supported when roaming).
.....

The system will update GPS data automatically based on a schedule.

Check the automatic update checkbox.

Set the date and time.

You will see the expiration date of the GPS data. On the due date, a warning message will appear to remind you.

Alternatively, tap the **Download Button** to update the GPS data manually.



.....
Important: You may be charged additional fees when connecting over GPRS.
.....

Personalize your Acer M900DF Smartphone

This section takes you through all settings that can be adjusted under the **Personal** tab in the **Settings** screen.

Adjust the volume

To adjust the volume, tap  at the top of the Home screen. The volume control appears.

- Use the upper slider to adjust the ring volume.
- Use the lower slider to adjust system volume.
- Use the icons at the top of the screen to turn all sounds on, set to vibrate only or mute all sounds.
- If you adjust the volume during a call, the speaker volume will be adjusted.

Configure start menu programs

You can select the programs you most frequently use and put them in the Start menu as shortcuts.

1. Tap **Start > Settings > Personal tab > Menus**.
2. Select the programs to appear in the Start menu from the list.
3. Tap **OK** to confirm and save.

Configure sounds and notifications

You can specify sounds to play for certain events or when certain actions are performed.

1. Tap **Start > Settings > Personal tab > Sounds & Notifications > Sounds** tab.
2. Select to enable sounds for events or programs. You can also specify to enable sounds when tapping the screen or pressing buttons.

3. Tap the **Notifications** tab.
4. Select an event from the list and the notification options for that event are displayed.
5. Adjust the settings.
6. Repeat steps 4 and 5 to adjust notification options for other events.
7. Tap **OK** to confirm and save.

Configure backlight settings

You can specify the appearance and conditions under which the screen backlight will be on or off.

1. Tap **Start > Settings > System** tab > **Backlight > Battery Power** tab.
2. Select the timing for the backlight to turn on and off when your Acer M900DF Smartphone is running on battery power.
3. Tap the **External Power** tab. Select the timing of the backlight to turn on or off when your Acer M900DF Smartphone is running on external power.
4. Tap the **Backlight Level** tab. Adjust the backlight brightness level and automatic level selection options.
5. Tap **OK** to confirm and save.



Tip: Backlight settings greatly affect battery life. Configure these settings carefully to ensure that you get the most out of your battery.

Manage system certificates

System certificates are used to positively identify your Acer M900DF Smartphone to other systems.

Tap **Start > Settings > System** tab > **Certificates** to view all certificates.

Set the clock and alarms

You can set the current date and time for two locations, and set multiple alarms.

Refer to **“Set the date and time” on page 52** for information on how to set the time and date.

Set alarms

1. Tap **Start > Settings > System tab > Clock & Alarms > Alarms tab**.
2. Tap the checkbox to activate an alarm.
3. Tap **Description** and enter a name for the alarm.
4. Select the day and time for the alarm.
5. Tap **OK** to confirm and save.

Adjust microphone volume

You can adjust the microphone volume level and activate the Automatic Gain Control (AGC) feature.

1. Tap **Start > Settings > System tab > Microphone**.
2. Move the slider to adjust the microphone volume.
3. Tap **OK** to confirm and save.

Configure regional settings

You can adjust regional settings for number, currency, date and time formats to match those used in your country.

1. Tap **Start > Settings > System tab > Regional Settings**.
2. Tap the **Region, Number, Currency, Date and Time** tabs to view information for your region. Adjust any if necessary.
3. Tap **OK** to confirm and save.

Power saving options

1. Tap **Start > Settings > System tab > Power > Advanced** tab.

2. Select the interval after which your Acer M900DF Smartphone will turn off if not in use. You can specify two intervals: one for when on battery power, and one for when on external power.

View power status

Tap **Start** > **Settings** > **System** tab > **Power** > **Battery** tab to view battery power status.

Remove programs

You can remove programs you have installed on your Acer M900DF Smartphone to free up extra storage memory.



.....
Note: You can only remove programs you have installed, you cannot remove programs installed during manufacture.
.....

1. Tap **Start** > **Settings** > **System** tab > **Remove Programs**.
2. Tap the program you want to remove from the list.
3. Tap **Remove** and the program will be uninstalled.

Configure screen options

You can change orientation, align the screen, enable ClearType and adjust text size to make viewing your Acer M900DF Smartphone as comfortable as possible.

1. Tap **Start** > **Settings** > **System** tab > **Screen** > **General** tab.
2. Select screen orientation and tap **Align Screen** if you need to re-align the screen.
3. Tap the **ClearType** tab. Select to enable ClearType.
4. Tap the **Text Size** tab. Move the slider to adjust text size.
5. Tap **OK** to confirm and save.

Reset your Acer M900DF Smartphone

You may have to perform a reset if your Acer M900DF Smartphone fails to respond when buttons are pressed or the screen is tapped.



Note: Before performing a reset, ensure that your Acer M900DF Smartphone is not locked. Press any key or tap the screen to see if the fingerprint screen opens.

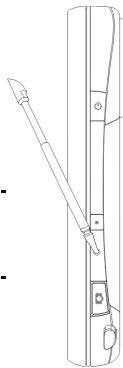
Soft reset

A soft reset allows your Acer M900DF Smartphone to get a fresh start, similar to rebooting your computer. All data and settings information are retained after resetting.



Important: To reduce the risk of damage to your Acer M900DF Smartphone, only use the supplied stylus to reset the device.

Using the tip of your stylus, lightly press the **Reset** button inside the hole on the side of your Acer M900DF Smartphone.



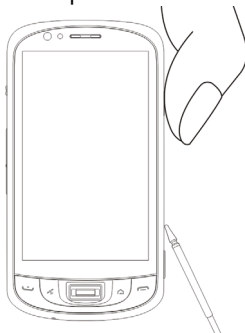
Cold boot

A cold boot will clear the RAM of your Acer M900DF Smartphone. It is similar to turning a computer off and then turning it back on.



Important: To reduce risking damage to your Acer M900DF Smartphone, only use the supplied stylus to reset the device.

Hold down the power button and use the tip of your stylus to lightly press the **Reset** button inside the hole on the side of your Acer M900DF Smartphone.



Clean boot



Warning! You should only perform a clean boot when all other reset options have failed to restore your Acer M900DF Smartphone to an operational state.

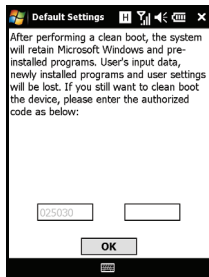
A clean boot will restore your Acer M900DF Smartphone to the state it was when you got it from the factory.



Warning! This will erase all your personal information, any contacts stored on your phone and any programs you installed.

If your screen is responding to stylus input: Go to **Start > Programs > Utilities > Default Settings**. Read the warning information and enter the security code in the empty textbox. Tap **OK** to proceed.

If your screen is not responding to stylus input: Press the reset button while holding the power button down. When you see the Acer screen, press and hold the Record button. You will see a screen asking you to confirm the clean boot, press the camera button to confirm. If you do not press the camera button, your Acer M900DF Smartphone will reboot to as normal.



Chapter 9: Accessories and Tips

This chapter shows you how to use accessories with your Acer M900DF Smartphone, as well as provide useful tips for when you are using your Acer M900DF Smartphone.

Use the stereo headset

Your Acer M900DF Smartphone comes packaged with a stereo headset with built-in microphone for handsfree use when making calls.

To use the headset, plug it into the mini USB port in the side of the unit.

When the headset is plugged in, all audio is routed to the headset, and the speakers are turned off.

- To answer an incoming call, press the silver button on the microphone.
- Adjust the volume with the integrated volume wheel.
- End the call by pressing the silver button again.


Use a Bluetooth headset

Your Acer M900DF Smartphone's Bluetooth functions make it fully compatible with all Bluetooth headsets. This allows you to use the unit handsfree when making calls, without the inconvenience of wires.

To set up your Bluetooth headset:

1. Turn on Bluetooth using the Comm. Manager (please see **"Comm. Manager"** on page 66).

2. Connect to the headset as described in **“Create new bluetooth connections” on page 70.**
3. Tap the icon for your Bluetooth headset.
4. Enter your headset passkey and tap **OK** or press the **OK** button.
5. Tap **Finish** to complete setup.

When you want to answer an incoming call, press the “answer” button on your Bluetooth headset. Press  or **End** to end the call.



Tip: As well as being essential for handsfree operation when driving, you can also use your Bluetooth headset when at home or in the office, to avoid carrying your Acer M900DF Smartphone around with you at all times. In ideal conditions, Bluetooth range is up to 10 metres, or 30 feet.

Use your Acer M900DF Smartphone as a modem

When connected to your PC, your Acer M900DF Smartphone can function as a modem via GPRS or UMTS.

You can also use a USB connection or the Bluetooth function of your Acer M900DF Smartphone to connect to your PC or laptop and act as a modem. You must first set up an ISP connection on your PC or laptop.

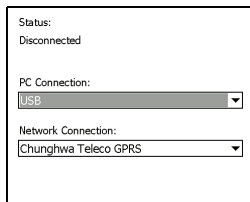
1. Click **Start > Settings > Control Panel.**
2. Click **Network Connections > Create a new connection.**
3. Click **Next** to begin the New Connection Wizard.
4. Select **Connect to the Internet** and click **Next.**
5. Select **Set up my connection manually** and click **Next.**
6. Select **Connect to a dial-up modem** and click **Next.**

7. Enter the name of your ISP (Internet Service Provider) and click **Next**.
8. Enter your ISP's phone number. The number must begin with '*99#'. Click **Next**.
9. Select one option from the Connection Availability screen and click **Next**.
10. Enter your username and password and click **Next**.
11. Click **Finish** to complete the setup.

You can now establish a Bluetooth connection between your PC and your Acer M900DF Smartphone. When you attempt to access the Internet on your PC, the Acer M900DF Smartphone will dial the ISP number specified to establish a connection.

Use a USB connection

1. Close ActiveSync if it is running. This helps Internet sharing to function properly.
2. Tap **Start > Programs > Internet Sharing**.
3. Select USB from the PC connection drop-down menu.
4. Select your network connection type from the network connection drop-down menu.
5. Tap **Connect**.



Your Acer M900DF Smartphone will now act as a modem.

Use a Bluetooth connection

You can also use Bluetooth to link your PC to your Acer M900DF Smartphone to connect to the Internet. Ensure that Bluetooth is enabled from the Comm. Manager (refer to **“Comm. Manager” on page 66**), and that other devices can discover your Acer M900DF Smartphone. To do this, open the

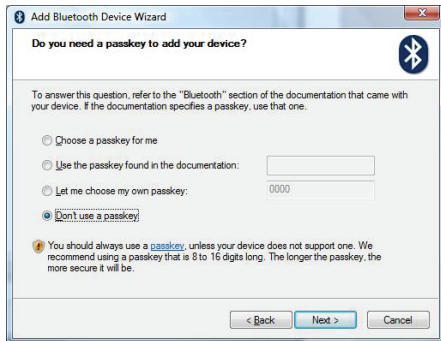
Comm. Manager, tap **Settings > Bluetooth > Mode** tab, and check **Make this device visible to other devices**.

Ensure that your computer's Bluetooth adapter is switched on.

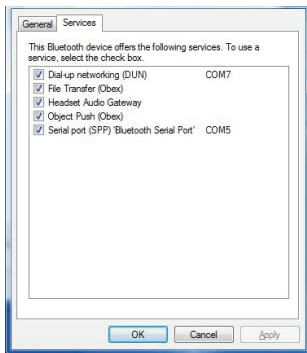
- Open **Bluetooth Places** and click **Add...**, then follow the steps of the Add Bluetooth Device Wizard.
- Double click on your Acer M900DF Smartphone device name.



- Select **Let me choose my own passkey** when requested, and enter a passkey.



- Your Acer M900DF Smartphone will ask to allow pairing, and for the Passkey. Enter the same code you entered above and tap **OK**.
- Windows will automatically connect to your Acer M900DF Smartphone and detect what services are available.



Insert a micro SD card

Your Acer M900DF Smartphone features a memory expansion slot that accepts a micro SD card to expand memory and storage capacity.

Open the micro SD reader cover and insert the micro SD card into the slot. Make sure the gold connectors are facing upwards. Push the card in until it clicks into place.

Appendix

FAQ, troubleshooting and error messages

This section lists frequently asked questions that may arise during the use of your Acer M900DF Smartphone, and gives easy answers and solutions to these questions.

Aspect	Question	Answer
Audio	Why is there no sound coming from the device?	<p>If the headset is plugged into the device, the speaker is automatically shut off. Disconnect the headset.</p> <p>Check that the device volume setting is not muted. Tap any of the icons at the top of the Home screen.</p> <p>Check that the volume control is not at its lowest setting.</p>
Touch screen	Why is the touch screen not responding to my stylus taps?	The screen may have lost its alignment. Go to Start > Settings > System tab > Screen to re-align the screen.
Multimedia files	Why can't I view my picture files?	You may be trying to view an image that is not supported. Refer to "Supported formats" on page 57 for more information.
	Why can't I view my video files?	You may be trying to view a video that is not supported. Refer to "Supported formats" on page 57 for more information.

Aspect	Question	Answer
	Why can't I play my music files?	You may be trying to play a file that is not supported. Refer to "Multimedia playback" on page 81 for more information.
System information and performance	How do I check the OS version of my device?	Tap Start > Settings > System tab > System Information to check the OS version and other hardware and software information.
	How do I restore the system back to its default factory settings?	Perform a clean boot. Refer to "Clean boot" on page 90 for more information.
	What should I do if the system stops functioning normally or crashes?	Perform a reset. Refer to "Soft reset" on page 89 for more information.
Power	I couldn't turn on the device.	The battery power may be depleted. Recharge the device. Refer to "Charge the battery" on page 17 for more information.
	Even when fully recharged, the battery seems to run down very quickly.	Check power saving options. Tap Start > Settings > System tab > Power to configure power saving options.

Error messages

Error message	Description
Connection canceled	Operation canceled by the user.
Service unavailable - please try again later	The network is not stable, or server has not responded. Try again later.
Connection unavailable - please check your network settings	<p>No path to the destination is available. Please check the settings in Start > Settings > Connections tab.</p> <ol style="list-style-type: none">1. If your Smartphone is connected to your PC via USB, check both the PC's network settings and ActiveSync settings (when connected via USB, neither Wi-Fi nor GPRS/3G is used).2. If Wi-Fi is enabled, check the Wi-Fi settings from Start > Settings > Connections tab > Comm. Manager (when Wi-Fi is enabled, GPRS/3G will not be used). <p>Note: You might need to log into the wireless environment.</p> <ol style="list-style-type: none">3. If you are using a GPRS/3G network, check the settings from Start -> Settings -> Connections Page -> Connections. If the Acer M900DF Smartphone is currently roaming, and the Exclude international GPRS/3G roaming is checked, you will need to uncheck it. <p>Notes:</p> <ol style="list-style-type: none">1. Try using Internet Explorer to connect to a website to verify your network connection.2. When the wireless signal is weak, the data connection may be unstable. Please try again later.

Specifications

Performance

- Qualcomm 8250 1.0 GHz
- System memory:
 - 256 MB of SDRAM
 - 512 MB of Flash ROM
 - 8 GB of MoviNand
- Windows Mobile 7.0 for Pocket PC Phone Edition

Display

- 3.8" TFT touchscreen
- 800 x 480 resolution
- 65K color support

Multimedia

- Formats supported

Type	Formats
Audio playback	WMA, MP3, WAV, AAC, AMR
Ringtone	SP-MIDI, MIDI, MMF, AMR, AWB, RMI, MP3, AAC
Video recording	3GP, MPEG-4, H.263, AVI, WMV
Video playback	3GP, MPEG-4, WMV, H.263, H.264

Connectivity

- Bluetooth 2.1+EDR
- IEEE Wi-Fi 802.11 b/g WLAN
- GSM 850 / 900 / 1800 / 1900

- UMTS 850 / 1900 / 2100
- HSDPA / HSUPA / EDGE / GPRS

Camera

- 5 megapixel auto-focus

Battery

- High density, rechargeable 1530 mAh Lithium Polymer battery (changeable)



.....
Note: Length of battery operation will depend on power consumption which is based on system resource use. For example, constantly using the backlight or using power-demanding applications will shorten battery life between charges.

Design and ergonomics

- Stylish, light and robust design

Height	119 mm
Width	62 mm
Thickness	17.2 mm
Weight	190 g (including battery and stylus)

Warnings and precautions

- Do not use this product near water.
- Do not place this product on an unstable cart, stand or table. If the product falls, it could be seriously damaged.
- Slots and openings are provided for ventilation to ensure reliable operation of the product and to protect it from overheating. These openings must not be blocked or covered. The openings should never be blocked by placing the product on a bed, sofa, rug or other similar surface. This product should never be placed near or over a radiator or heat register, or in a built-in installation unless proper ventilation is provided.
- Never push objects of any kind into this product through cabinet slots as they may touch dangerous voltage points or short-out parts that could result in a fire or electric shock. Never spill liquid of any kind onto or into the product.
- To avoid damage of internal components and to prevent battery leakage, do not place the product on a vibrating surface.
- Never use this product when engaging in sporting activities, exercising, or in any vibrating environment which may cause a short circuit or damage, and even a risk of explosion from the battery pack.

CAUTION when listening to music

To protect your hearing, follow these instructions.

- Increase the volume gradually until you can hear clearly and comfortably.
- Do not increase the volume level after your ears have adjusted.

- Do not listen to music at high volumes for extended periods.
- Do not increase the volume to block out noisy surroundings.
- Decrease the volume if you can't hear people speaking near you.

Battery information

This product uses a Lithium Polymer battery. Do not use it in a humid, wet and/or corrosive environment. Do not put, store or leave your product in or near a heat source, in a high temperature location, in strong direct sunlight, in a microwave oven or in a pressurized container, and do not expose it to temperatures over 60 °C (140 °F). Failure to follow these guidelines may cause the battery to leak acid, become hot, explode or ignite and cause injury and/or damage. Do not pierce, open or disassemble the battery. If the battery leaks and you come into contact with the leaked fluids, rinse thoroughly with water and seek medical attention immediately. For safety reasons, and to prolong the lifetime of the battery, charging will not occur at low (below 0 °C/32 °F) or high (over 40 °C/104 °F) temperatures.

The full performance of a new battery is achieved only after two or three complete charge and discharge cycles. The battery can be charged and discharged hundreds of times, but it will eventually wear out. When the talk and standby times are noticeably shorter than normal, buy a new battery. Use only Acer approved batteries, and recharge your battery only with Acer approved chargers designated for this device.

Unplug the charger from the electrical plug and the device when not in use. Do not leave a fully charged battery connected to the ac charger, since overcharging may shorten its lifetime. If left unused, a fully charged battery will lose its charge over time. If the battery is completely discharged, it

may take a few minutes before the charging indicator appears on the display or before any calls can be made.

Use the battery only for its intended purpose. Never use any charger or battery that is damaged.

Do not short-circuit the battery. Accidental short-circuiting can occur when a metallic object such as a coin, clip, or pen causes direct connection of the positive (+) and negative (-) terminals of the battery. (These look like metal strips on the battery.)

This might happen, for example, when you carry a spare battery in your pocket or purse. Short-circuiting the terminals may damage the battery or the connecting object.

Leaving the battery in hot or cold places, such as in a closed car in summer or winter conditions, will reduce the capacity and lifetime of the battery. Always try to keep the battery between 15 °C and 25 °C (59 °F and 77 °F). A device with a hot or cold battery may not work temporarily, even when the battery is fully charged. Battery performance is particularly limited in temperatures well below freezing.

Do not dispose of batteries in a fire as they may explode. Batteries may also explode if damaged. Dispose of batteries according to local regulations. Please recycle when possible. Do not dispose as household waste.

Replacing the battery pack

Your Acer M900DF Smartphone uses lithium batteries. Replace the battery with the same type as that which came bundled with your product. Use of another battery may present a risk of fire or explosion.



.....
Warning! Batteries may explode if not handled properly. Do not disassemble or dispose of them in fire. Keep them away from children. Follow local regulations when disposing of used batteries.
.....

Additional safety information

Your device and its enhancements may contain small parts. Keep them out of the reach of small children.

Operating environment



.....
Warning! For safety reasons, turn off all wireless or radio transmitting devices when using your Acer x960 Smartphone device under the following conditions. These devices may include, but are not limited to: wireless LAN (WLAN), Bluetooth and/or 3G.
.....

Remember to follow any special regulations in force in any area, and always switch off your device when its use is prohibited or when it may cause interference or danger. Use the device only in its normal operating positions. This device meets RF exposure guidelines when used normally, and it and its antenna are positioned at least 1.5 cm (5/8") away from your body. Do not cover the antenna with metal and you should position the device at the above-stated distance from your body. To successfully transmit data files or messages, this device requires a good quality connection to the network. In some cases, transmission of data files or messages may be delayed until such a connection is available. Ensure that the above separation distance instructions are followed until the transmission is completed. Parts of the device are magnetic. Metallic materials may be attracted to the device, and persons with hearing aids should not hold the device to the ear with the hearing aid. Do not place credit cards or other magnetic storage media near the device, because information stored on them may be erased.

Medical devices

Operation of any radio transmitting equipment, including wireless phones, may interfere with the functionality of inade-

quately protected medical devices. Consult a physician or the manufacturer of the medical device to determine if they are adequately shielded from external RF energy or if you have any questions. Switch off your device in health care facilities when any regulations posted in these areas instruct you to do so. Hospitals or health care facilities may be using equipment that could be sensitive to external RF transmissions.

Pacemakers. Pacemaker manufacturers recommend that a minimum separation of 15.3 cm (6") be maintained between wireless devices and a pacemaker to avoid potential interference with the pacemaker. These recommendations are consistent with the independent research by and recommendations of Wireless Technology Research. Persons with pacemakers should do the following:

- Always keep the device more than 15.3 cm (6") from the pacemaker.
- Not carry the device near your pacemaker when the device is switched on. If you suspect interference, switch off your device, and move it.

Hearing aids. Some digital wireless devices may interfere with some hearing aids. If interference occurs, consult your service provider.

Vehicles

RF signals may affect improperly installed or inadequately shielded electronic systems in motor vehicles such as electronic fuel injection systems, electronic antiskid (antilock) braking systems, electronic speed control systems, and air bag systems. For more information, check with the manufacturer, or its representative, of your vehicle or any equipment that has been added. Only qualified personnel should service the device, or install the device in a vehicle. Faulty installation or service may be dangerous and may invalidate any warranty that may apply to the device. Check regularly that all wireless equipment in

your vehicle is mounted and operating properly. Do not store or carry flammable liquids, gases, or explosive materials in the same compartment as the device, its parts, or enhancements. For vehicles equipped with an air bag, remember that air bags inflate with great force. Do not place objects, including installed or portable wireless equipment in the area over the air bag or in the air bag deployment area. If in-vehicle wireless equipment is improperly installed, and the air bag inflates, serious injury could result. Using your device while flying in aircraft is prohibited. Switch off your device before boarding an aircraft. The use of wireless teledevices in an aircraft may be dangerous to the operation of the aircraft, disrupt the wireless telephone network, and may be illegal.

Potentially explosive environments



Switch off your device when in any area with a potentially explosive atmosphere and obey all signs and instructions. Potentially explosive atmospheres include areas where you would normally be advised to turn off your vehicle engine. Sparks in such areas could cause an explosion or fire resulting in bodily injury or even death. Switch off the device at refueling points such as near gas pumps at service stations. Observe restrictions on the use of radio equipment in fuel depots, storage, and distribution areas; chemical plants; or where blasting operations are in progress. Areas with a potentially explosive atmospheres are often, but not always, clearly marked. They include below deck on boats, chemical transfer or storage facilities, vehicles using liquefied petroleum gas (such as propane or butane), and areas where the air contains chemicals or particles such as grain, dust or metal powders.

Follow any restrictions. Do not use the device where blasting is in progress.

Emergency calls

Important: Wireless phones, including this device, operate using radio signals, wireless networks, landline networks, and user-programmed functions. Because of this, connections in all conditions cannot be guaranteed. You should never rely solely on any wireless device for essential communications like medical emergencies.

To make an emergency call:

1. If the device is not on, switch it on. Check for adequate signal strength. Some networks may require that a valid SIM card is properly inserted in the device.
2. Press  as many times as needed to clear the display and ready the device for calls.
3. Enter the official emergency number for your present location. Emergency numbers vary by location.
4. Press .

If certain features are in use, you may first need to turn those features off before you can make an emergency call. Consult this guide or your service provider for more information.

When making an emergency call, give all the necessary information as accurately as possible. Your wireless device may be the only means of communication at the scene of an accident. Do not end the call until given permission to do so.

Disposal and recycling information

Do not throw this electronic device into the trash when discarding.

To minimize pollution and ensure utmost protection of the global environment, please recycle. For more information on the Waste from Electrical and Electronics Equipment (WEEE)

regulations, visit
<http://www.acer-group.com/public/Sustainability/sustainability01.htm>



Mercury advisory

For projectors or electronic products containing an LCD/CRT monitor or display:

Lamp(s) inside this product contain mercury and must be recycled or disposed of according to local, state or federal laws. For more information, contact the Electronic Industries Alliance at www.eiae.org. For lamp-specific disposal information, check www.lamprecycle.org.



Taking care of your Acer M900DF Smartphone

1. **DO** take care not to scratch the screen of your Acer M900DF Smartphone. Keep the screen clean. When working with your Acer M900DF Smartphone, use the supplied stylus or plastic-tipped pens intended for use with touch-sensitive screens. Never use an actual pen or pencil or other sharp object on the screen surface.
2. **DO NOT** expose your Acer M900DF Smartphone to rain or moisture. Do not let water enter the circuitry through the front panel buttons or expansion slots. In general, treat your Acer M900DF Smartphone as you would a mobile phone or other small electronic device.

3. **DO** be careful not to drop your Acer M900DF Smartphone or subject it to any strong impact. Do not place your Acer M900DF Smartphone in your back pocket.
4. **DO NOT** expose your Acer M900DF Smartphone to extreme temperatures. For example, do not leave your Acer M900DF Smartphone on the dashboard of a car on a hot day or when temperatures are below freezing point. Also, keep it away from heaters and other sources of heat.
5. **DO NOT** use or store your Acer M900DF Smartphone in any location that is dusty, damp or wet.
6. **DO** use a soft, damp cloth to clean your Acer M900DF Smartphone. If the surface of the screen becomes soiled, clean it with a soft cloth moistened with diluted window-cleaning solution.
7. **DO NOT** press down on the screen with force, otherwise you may crack the screen.

Safety regulations

LCD pixel statement

The LCD unit is produced with high-precision manufacturing techniques. Nevertheless, some pixels may occasionally misfire or appear as black or red dots. This has no effect on the recorded image and does not constitute a malfunction.

Radio device regulatory notice



.....
Note: Regulatory information below is for models with wireless LAN and/or Bluetooth only.
.....

General

This product complies with the radio frequency and safety standards of any country or region in which it has been approved for wireless use. Depending on configuration, this product may or may not contain wireless radio devices (such as wireless LAN and/or Bluetooth modules). Information below is for products with such devices.

FCC INTERFERENCE STATEMENT

This mobile device meets the guidelines for exposure to radio waves. Your mobile device is a radio transmitter and receiver. It is designed not to exceed the limits for exposure to radio waves recommended by international guidelines.

This equipment has been tested and found to comply with the limits for a Class B digital device, pursuant to Part 15 of the FCC Rules. These limits are designed to provide reasonable protection against harmful interference in a residential installation. This equipment generates, uses and can radiate radio frequency energy and, if not installed and used in accordance

with the instructions, may cause harmful interference to radio communications. However, there is no guarantee that interference will not occur in a particular installation. If this equipment does cause harmful interference to radio or television reception, which can be determined by turning the equipment off and on, the user is encouraged to try to correct the interference by one or more of the following measures:

- Reorient or relocate the receiving antenna.
- Increase the separation between the equipment and receiver.
- Connect the equipment into an outlet on a circuit different from that to which the receiver is connected.
- Consult the dealer or an experienced radio/TV technician for help.

This mobile phone complies with part 15 of the FCC Rules. Operation is subject to the following two conditions: (1) This device may not cause harmful interference, and (2) this device must accept any interference received, including interference that may cause undesired operation.

RF exposure warning:

- The equipment complies with FCC RF exposure limits set forth for an uncontrolled environment.
- The equipment must not be co-located or operated in conjunction with any other antenna or transmitter.

Max. SAR Measurement

PCS1900: 1.09 W/kg

A

ActiveSync

synchronizing 80

application buttons 36

B

backlight settings 86

battery

charging 17

information 103

installing 16

Bluetooth

connections 70

headset 93

sending contacts 75

settings 67

C

calendar 80

call barring 71

call forwarding 72

call history 27

dialing a call history

number 27

options 34

call waiting 72

caller ID 71

calls

answering 31

ending 31

from other applications

27

on-screen options 31

putting on hold 31

rejecting 31

swapping between 31

using the on-screen dial

pad 26

camera

editing photo 59

icons and indicators 55

information 103

shooting a video 57

supported formats 57

switching cameras in a

video call 31

taking a photo 57

turning on and off 31

clock and alarms 87

connecting to a PC 79

connections

managing 71

connectivity 102

contacts

adding and editing 73

assigning ring tones 73

deleting 75

making calls to a con-

tact 26

D

date and time

setting 52

design 103

display 102

E

error messages 99

F

FAQs 99

flight mode 65, 68

G

GPRS 51, 67, 94

H

help

menus 8

sources 8

I

input options 41

input settings 40

international numbers 32

L

LED indicators 14, 17

M

microphone volume 87

MMS messages 45

N

naming 53

network

selecting 67

O

on-screen dial pad 26

on-screen keyboard 37

P

performance 102

personalizing 52

phone

connections 66, 67

settings 71

photos & videos

editing 59

power management 68

profiles 72

Q

QWERTY keyboard 38

R

regional settings 87

ring tones 72

S

safety regulations 104

screen options 88

SD card 98

SIM Card

Entering PIN Code 18

Installing 15

SIM toolkit 76

software

list 104

removing 88

sounds and notifications 85

speakerphone 32

specifications 102

Start menu 85

status icons 51

stylus 35

symbol key 40

system certificates 86

T

tasks 80

troubleshooting 99

turning on 18

U

unpacking 11

USB connector 102

V

video calls

the video call screen 29

views

left 14

Voice Call / Video Call Menu

29

voice calls

the voice call screen 28

volume

adjusting 85

W

Windows Media Player 81

WLAN

settings 68

word completion 40