

ALSAS-10U VER 2.3.6 APREL Laboratories
SAR Test Report-WCDMA Band V RMCReport Date : 03-Mar-2009
Measurement Date : 03-Mar-2009

Product Data

Device Name : Mobile Phone
Type : Other
Model : M900
Frequency : 850.00 MHz
Max. Transmit Pwr : 2 W
Drift Time : 0 min(s)
Length : 119.2 mm
Width : 62.2 mm
Depth : 17.9 mm
Antenna Type : Internal

Phantom Data

Type : Uni-Phantom
Size (mm) : 280 x 280 x 200
Location : Center

Tissue Data

Type : BODY
Serial No. : 322-B
Frequency : 835.00 MHz
Last Calib. Date : 03-Mar-2009
Temperature : 21.50 °C
Ambient Temp. : 22.30 °C
Humidity : 51.00 RH%
Epsilon : 56.01 F/m
Sigma : 0.94 S/m
Density : 1000.00 kg/cu. m

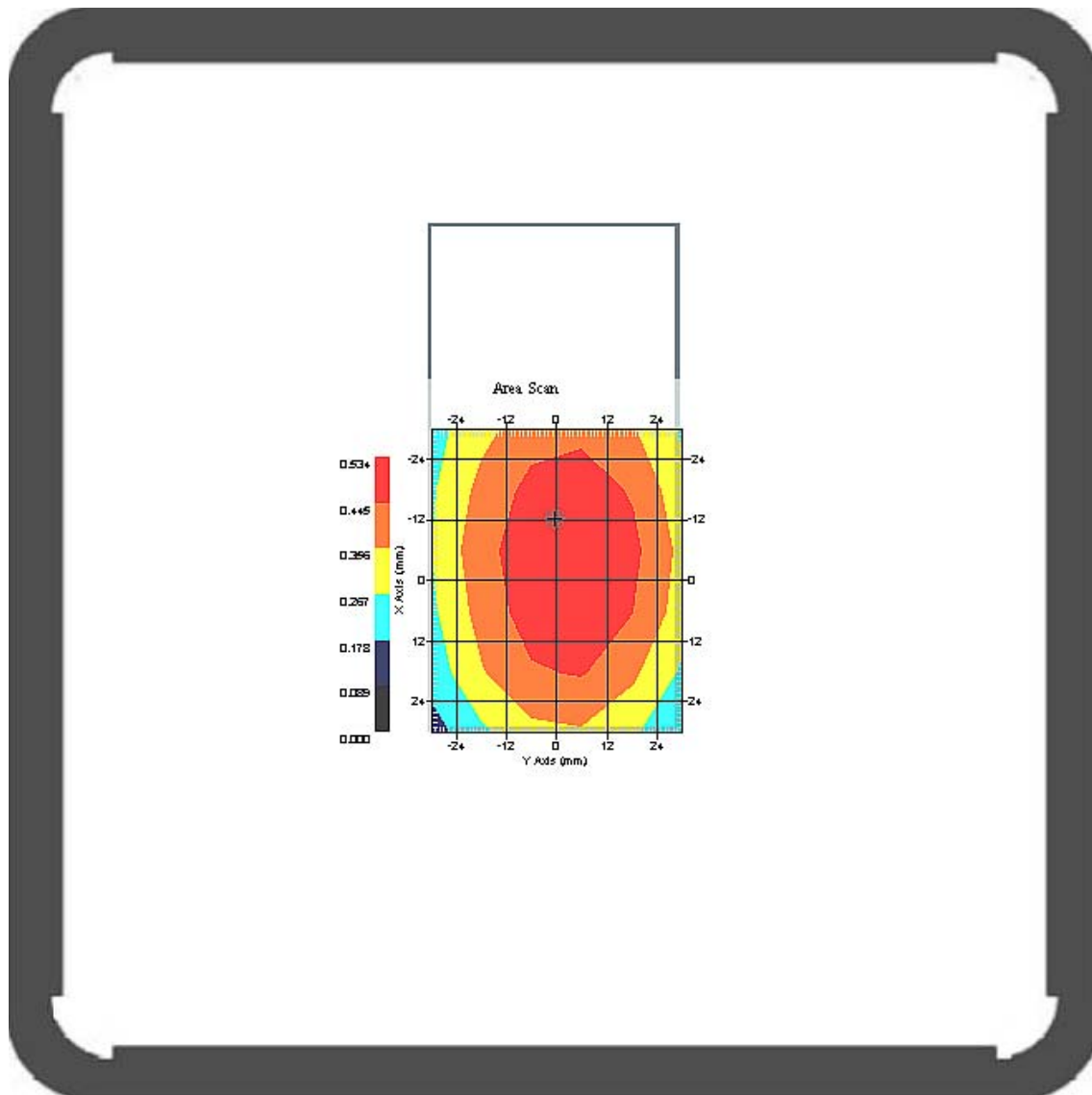
Probe Data

Name : Probe 265
Model : E020
Type : E-Field Triangle
Serial No. : 265
Last Calib. Date : 09-May-2008
Frequency : 835.00 MHz
Duty Cycle Factor: 1
Conversion Factor: 6.6
Probe Sensitivity: 1.20 1.20 1.20 $\mu\text{V}/(\text{V}/\text{m})^2$
Compression Point: 95.00 mV
Offset : 1.56 mm

Measurement Data

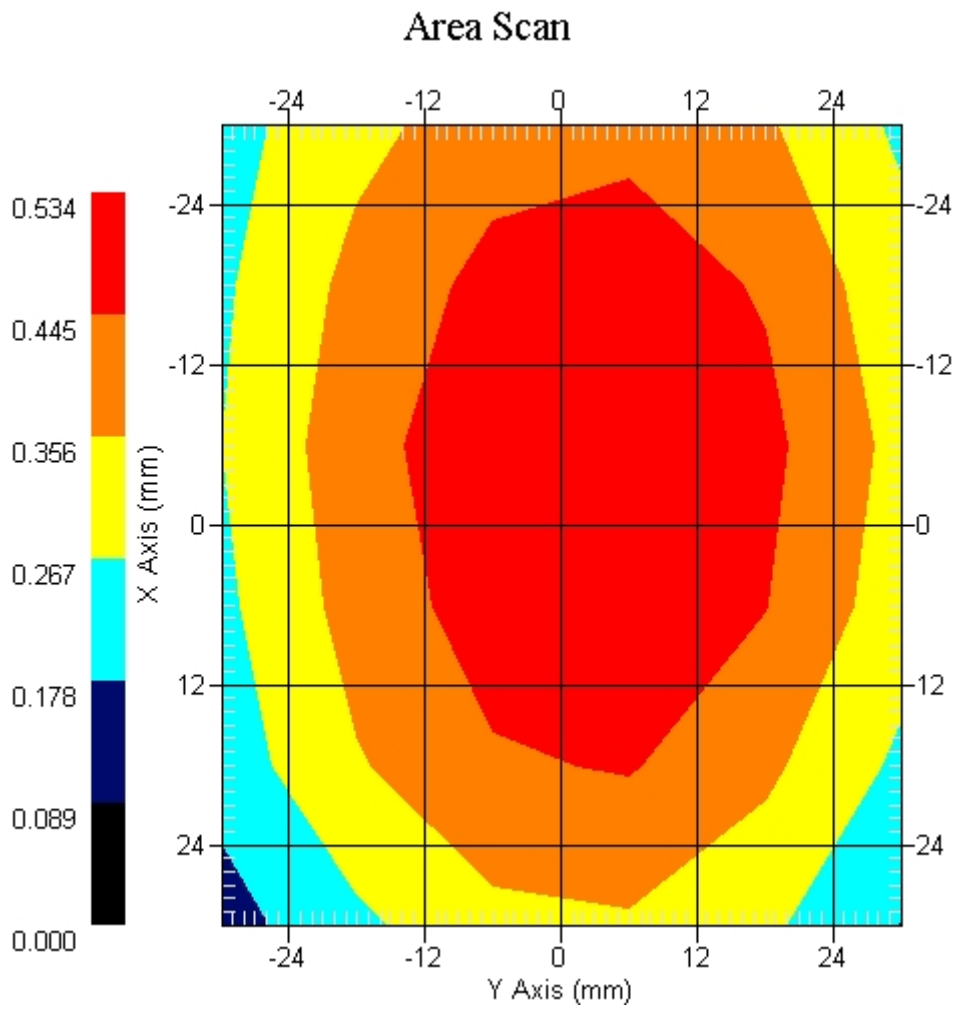
Crest Factor : 1
 Tissue Temp. : 21.50 °C
 Ambient Temp. : 22.30 °C
 Area Scan : 6x6x1 : Measurement x=12mm, y=12mm, z=4mm
 Zoom Scan : 5x5x8 : Measurement x=8mm, y=8mm, z=4mm
 Power Drift-Start : 0.470 W/kg
 Power Drift-Finish: 0.491 W/kg
 Power Drift (%) : 4.398

DUT Position : Touch
 Channel : 4132



1 gram SAR value : 0.513 W/kg
 10 gram SAR value : 0.381 W/kg
 Area Scan Peak SAR : 0.533 W/kg
 Zoom Scan Peak SAR : 0.660 W/kg

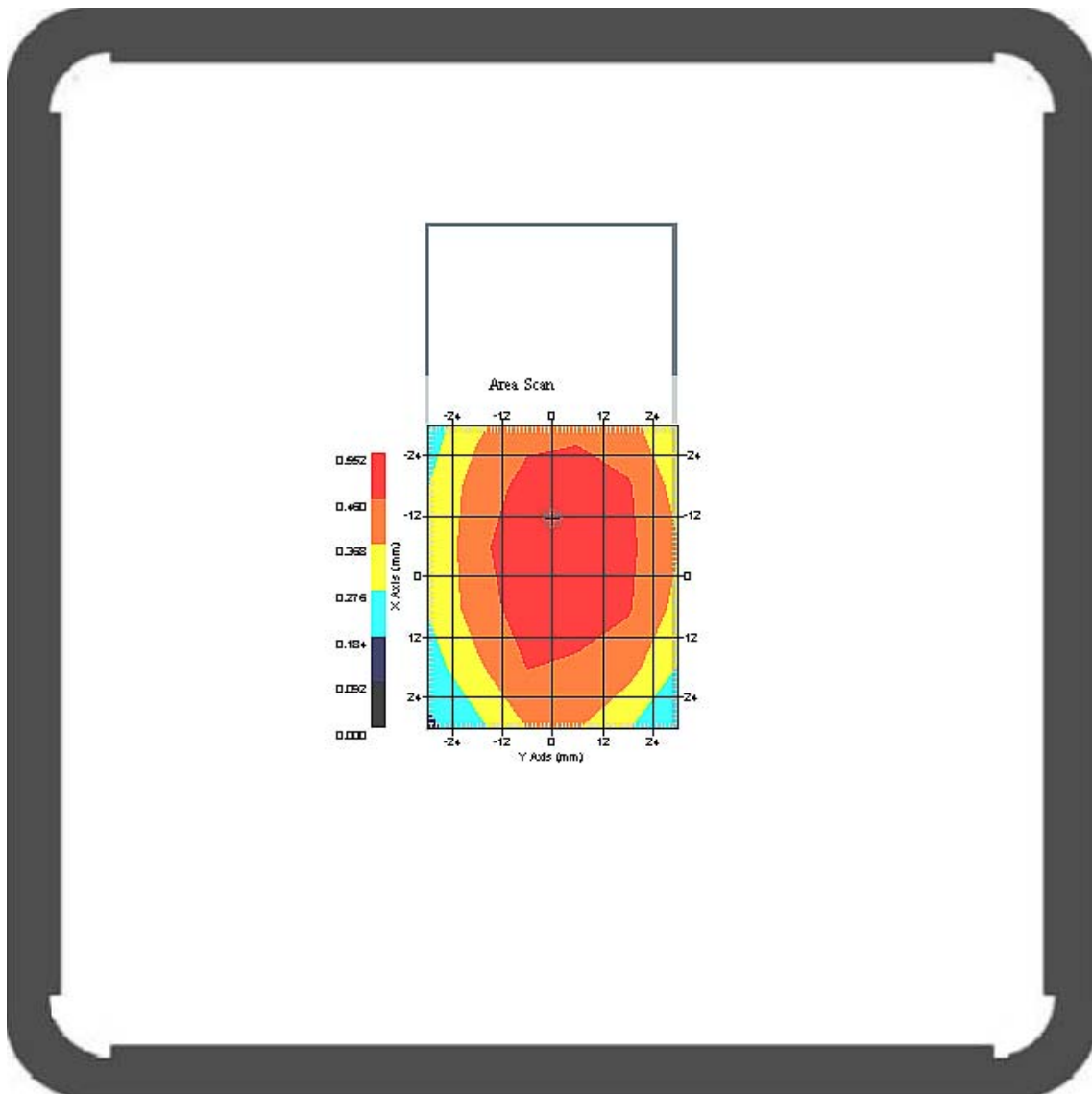
This is previous page plot (zoom in)



Measurement Data

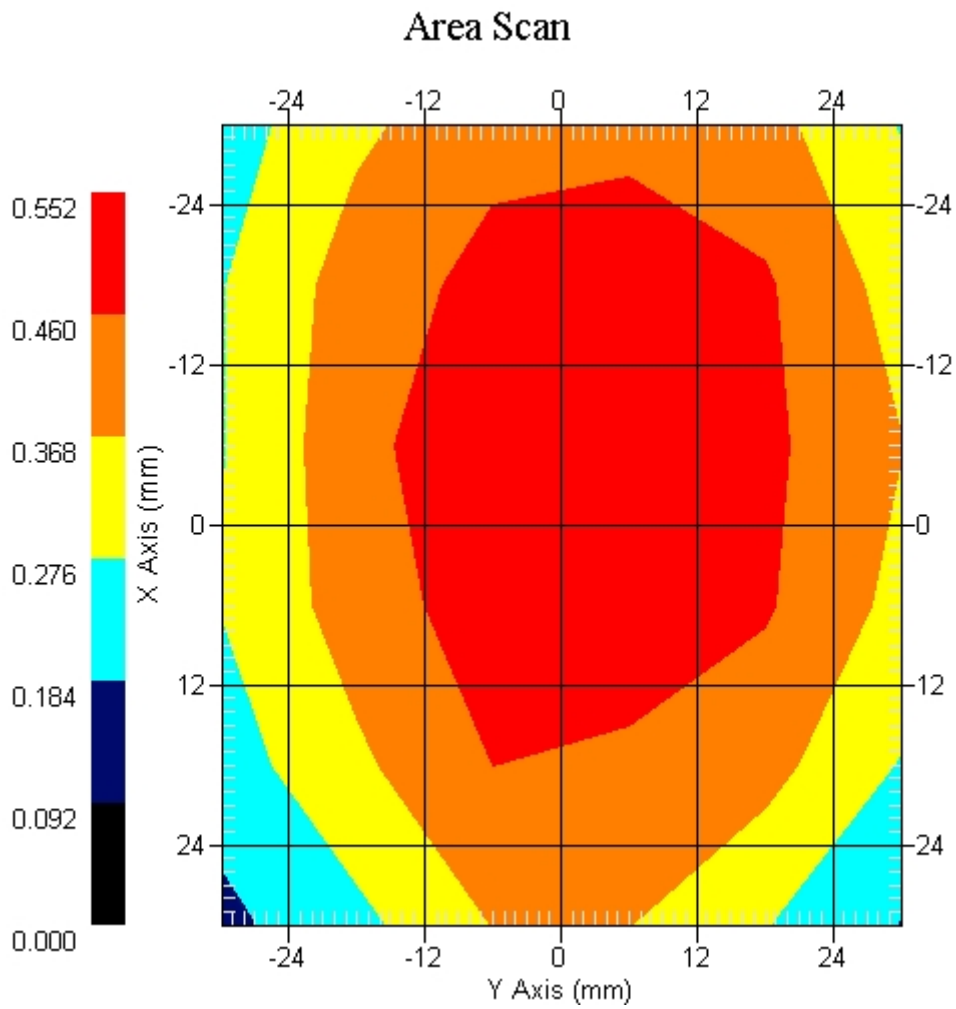
Crest Factor : 1
 Tissue Temp. : 21.50 °C
 Ambient Temp. : 22.30 °C
 Area Scan : 6x6x1 : Measurement x=12mm, y=12mm, z=4mm
 Zoom Scan : 5x5x8 : Measurement x=8mm, y=8mm, z=4mm
 Power Drift-Start : 0.487 W/kg
 Power Drift-Finish: 0.504 W/kg
 Power Drift (%) : 3.475

DUT Position : Touch
 Channel : 4183



1 gram SAR value : 0.531 W/kg
 10 gram SAR value : 0.398 W/kg
 Area Scan Peak SAR : 0.550 W/kg
 Zoom Scan Peak SAR : 0.683 W/kg

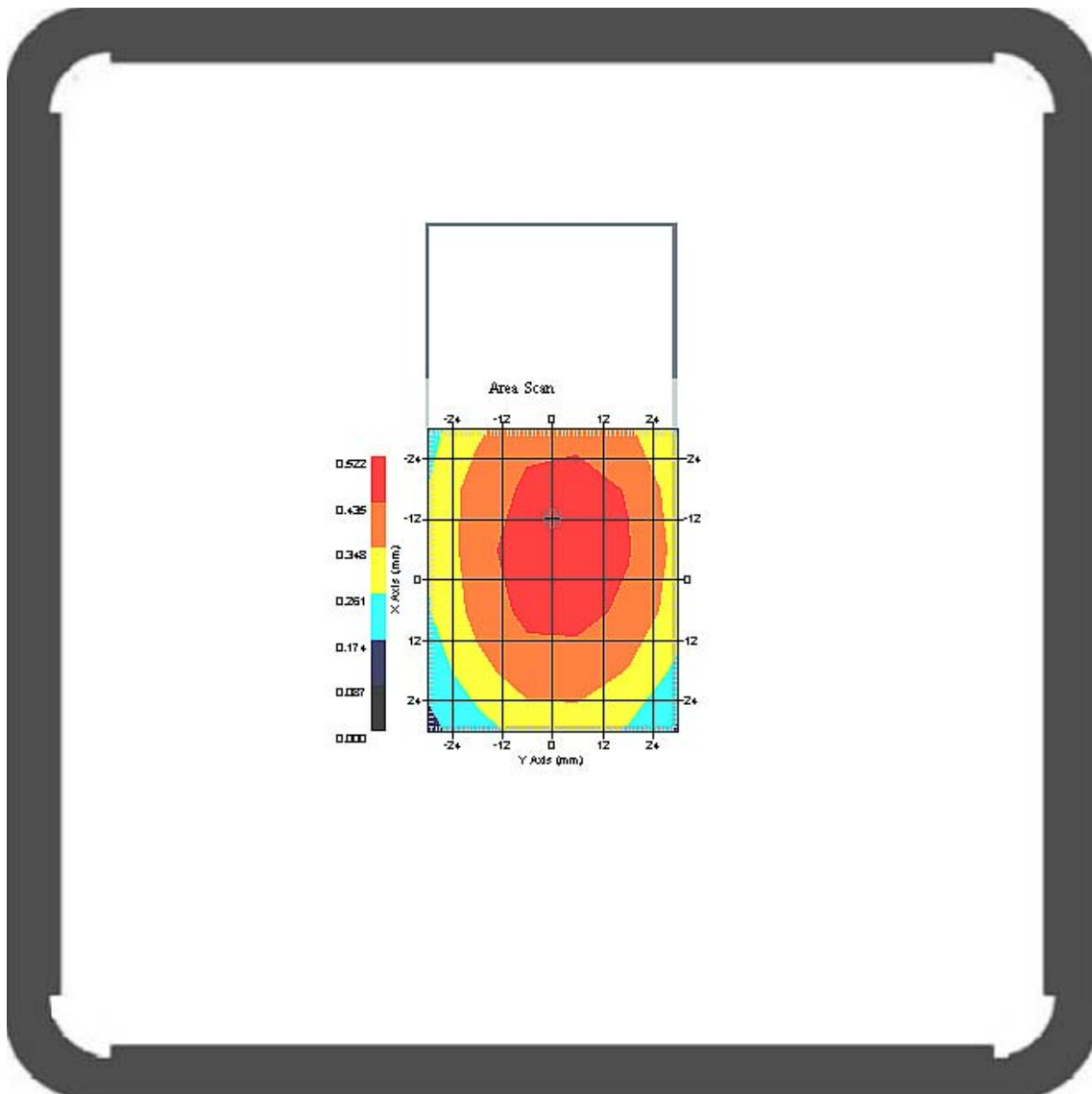
This is previous page plot (zoom in)



Measurement Data

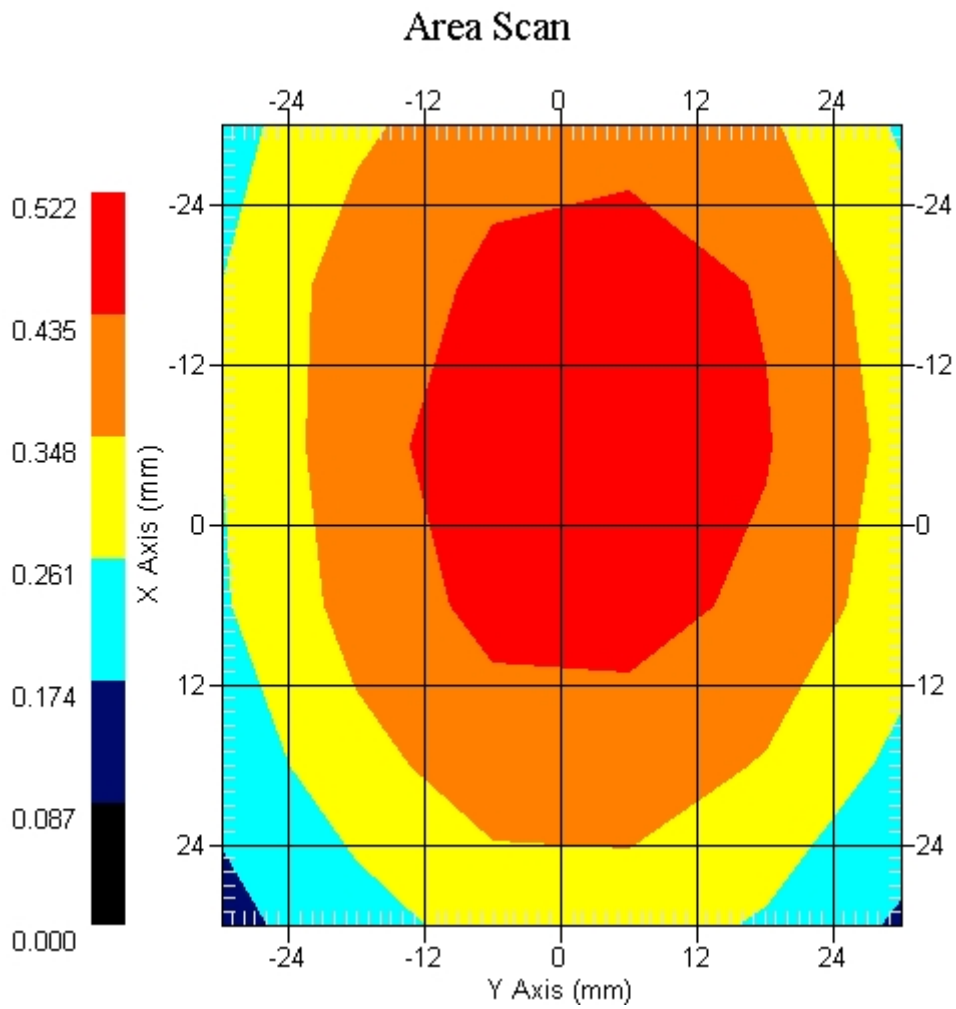
Crest Factor : 1
 STissue Temp. : 21.50 °C
 Ambient Temp. : 22.30 °C
 Area Scan : 6x6x1 : Measurement x=12mm, y=12mm, z=4mm
 Zoom Scan : 5x5x8 : Measurement x=8mm, y=8mm, z=4mm
 Power Drift-Start : 0.485 W/kg
 Power Drift-Finish: 0.470 W/kg
 Power Drift (%) : -3.131

DUT Position : Touch
 Channel : 4233



1 gram SAR value : 0.501 W/kg
 10 gram SAR value : 0.365 W/kg
 Area Scan Peak SAR : 0.520 W/kg
 Zoom Scan Peak SAR : 0.645 W/kg

This is previous page plot (zoom in)



ALSAS-10U VER 2.3.6 APREL Laboratories
SAR Test Report-WCDMA Band V HSDPAReport Date : 03-Mar-2009
Measurement Date : 03-Mar-2009

Product Data

Device Name : Mobile Phone
Type : Std Form Cell Phone
Model : M900
Frequency : 850.00 MHz
Max. Transmit Pwr : 2 W
Drift Time : 0 min(s)
Length : 119.2 mm
Width : 62.2 mm
Depth : 17.9 mm
Antenna Type : Internal

Phantom Data

Type : Uni-Phantom
Size (mm) : 280 x 280 x 200
Location : Center

Tissue Data

Type : BODY
Serial No. : 322-B
Frequency : 835.00 MHz
Last Calib. Date : 03-Mar-2009
Temperature : 21.50 °C
Ambient Temp. : 22.30 °C
Humidity : 51.00 RH%
Epsilon : 56.01 F/m
Sigma : 0.94 S/m
Density : 1000.00 kg/cu. m

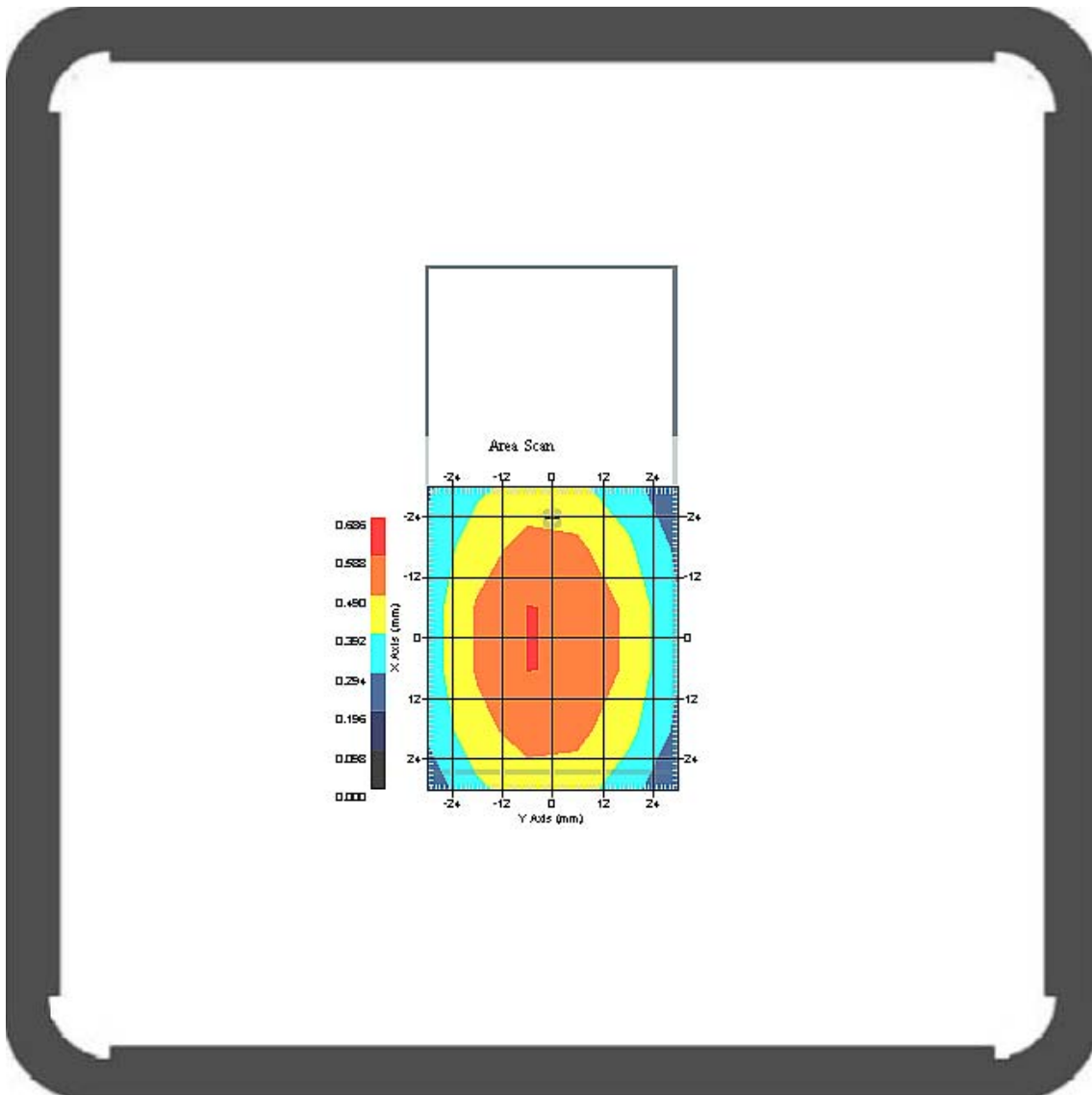
Probe Data

Name : Probe 265
Model : E020
Type : E-Field Triangle
Serial No. : 265
Last Calib. Date : 09-May-2008
Frequency : 835.00 MHz
Duty Cycle Factor: 1
Conversion Factor: 6.6
Probe Sensitivity: 1.20 1.20 1.20 $\mu\text{V}/(\text{V}/\text{m})^2$
Compression Point: 95.00 mV
Offset : 1.56 mm

Measurement Data

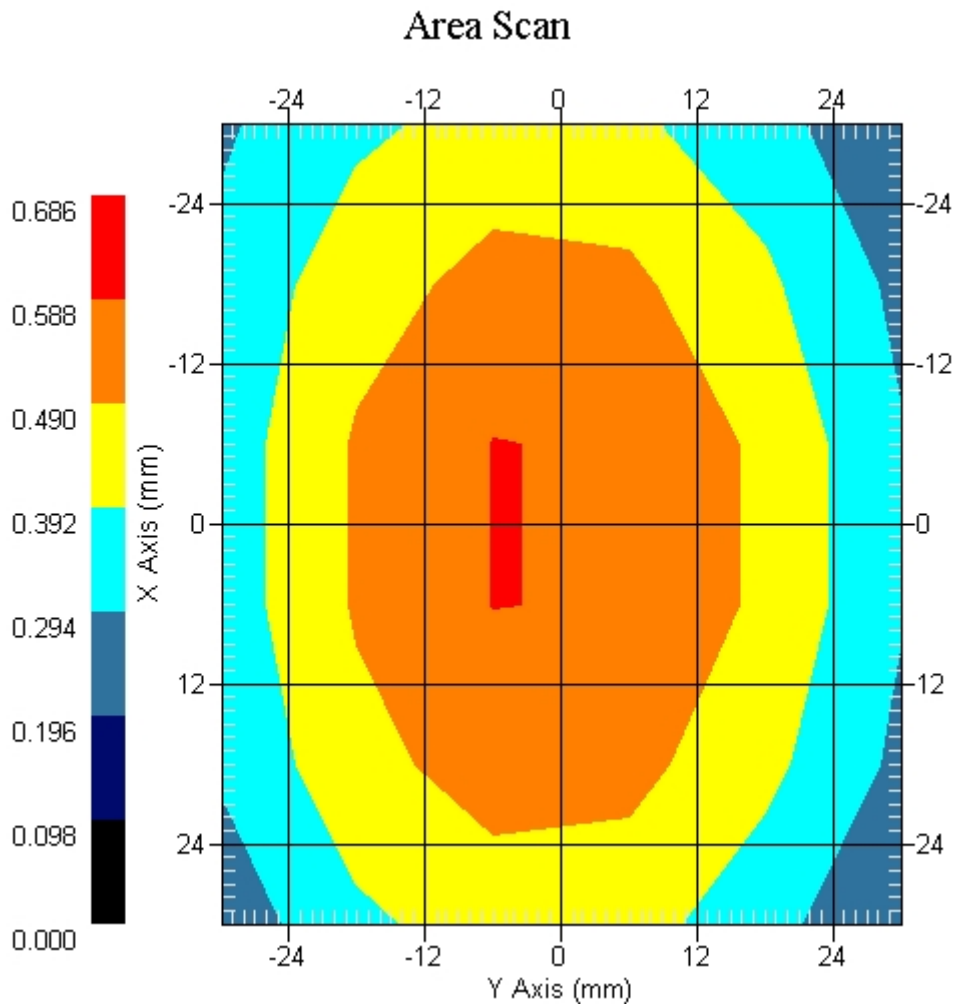
Crest Factor : 1
 Tissue Temp. : 21.50 °C
 Ambient Temp. : 22.30 °C
 Area Scan : 6x6x1 : Measurement x=12mm, y=12mm, z=4mm
 Zoom Scan : 5x5x8 : Measurement x=8mm, y=8mm, z=4mm
 Power Drift-Start : 0.562 W/kg
 Power Drift-Finish: 0.555 W/kg
 Power Drift (%) : -1.296

DUT Position : Touch
 Channel : 4183



1 gram SAR value : 0.575 W/kg
 10 gram SAR value : 0.431 W/kg
 Area Scan Peak SAR : 0.590 W/kg
 Zoom Scan Peak SAR : 0.723 W/kg

This is previous page plot (zoom in)



ALSAS-10U VER 2.3.6 APREL Laboratories
SAR Test Report-WCDMA Band V HSUPAReport Date : 03-Mar-2009
Measurement Date : 03-Mar-2009

Product Data

Device Name : Mobile Phone
Type : Std Form Cell Phone
Model : M900
Frequency : 850.00 MHz
Max. Transmit Pwr : 2 W
Drift Time : 0 min(s)
Length : 119.2 mm
Width : 62.2 mm
Depth : 17.9 mm
Antenna Type : Internal

Phantom Data

Type : Uni-Phantom
Size (mm) : 280 x 280 x 200
Location : Center

Tissue Data

Type : BODY
Serial No. : 322-B
Frequency : 835.00 MHz
Last Calib. Date : 03-Mar-2009
Temperature : 21.50 °C
Ambient Temp. : 22.30 °C
Humidity : 51.00 RH%
Epsilon : 56.01 F/m
Sigma : 0.94 S/m
Density : 1000.00 kg/cu. m

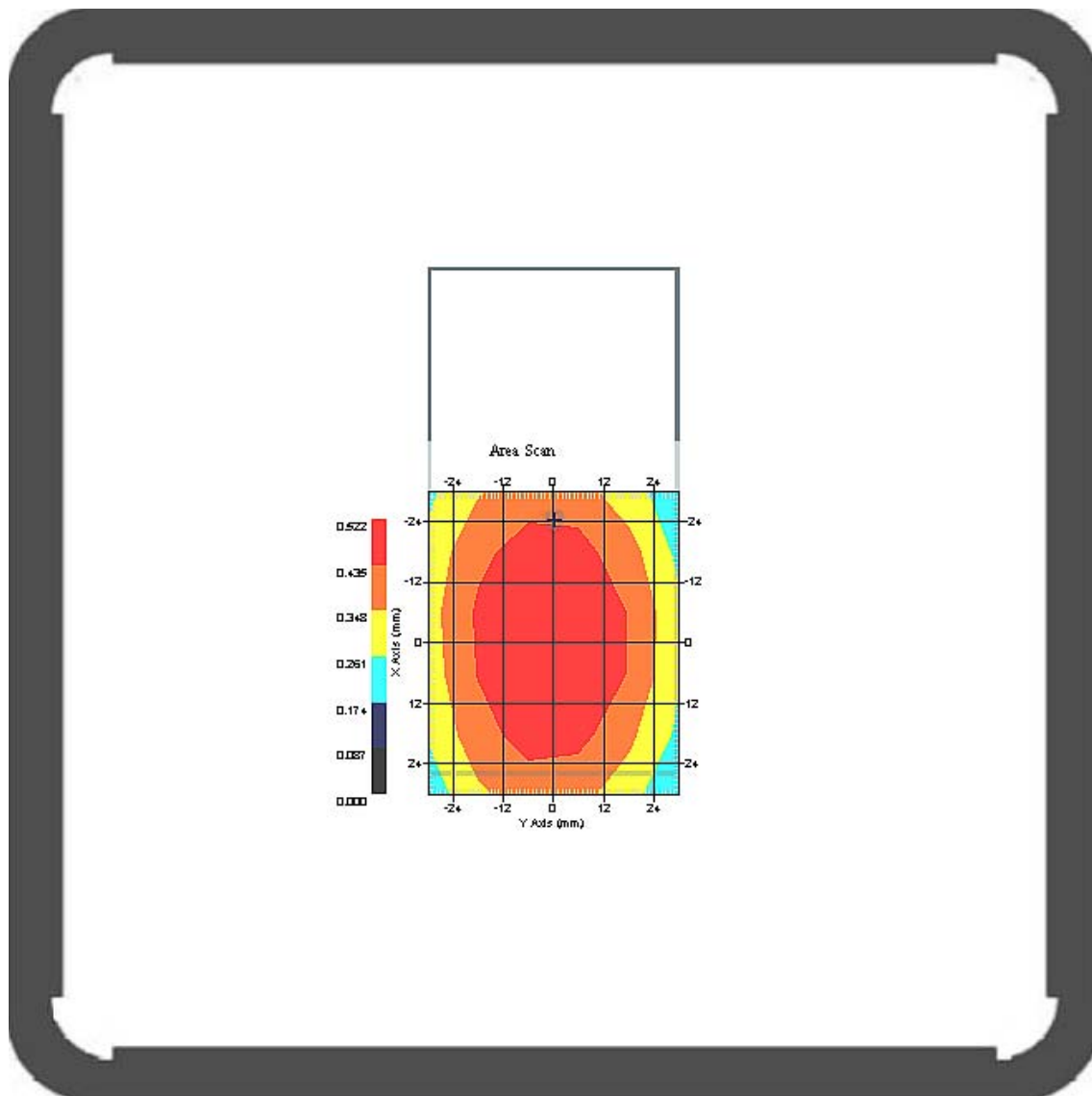
Probe Data

Name : Probe 265
Model : E020
Type : E-Field Triangle
Serial No. : 265
Last Calib. Date : 09-May-2008
Frequency : 835.00 MHz
Duty Cycle Factor: 1
Conversion Factor: 6.6
Probe Sensitivity: 1.20 1.20 1.20 $\mu\text{V}/(\text{V}/\text{m})^2$
Compression Point: 95.00 mV
Offset : 1.56 mm

Measurement Data

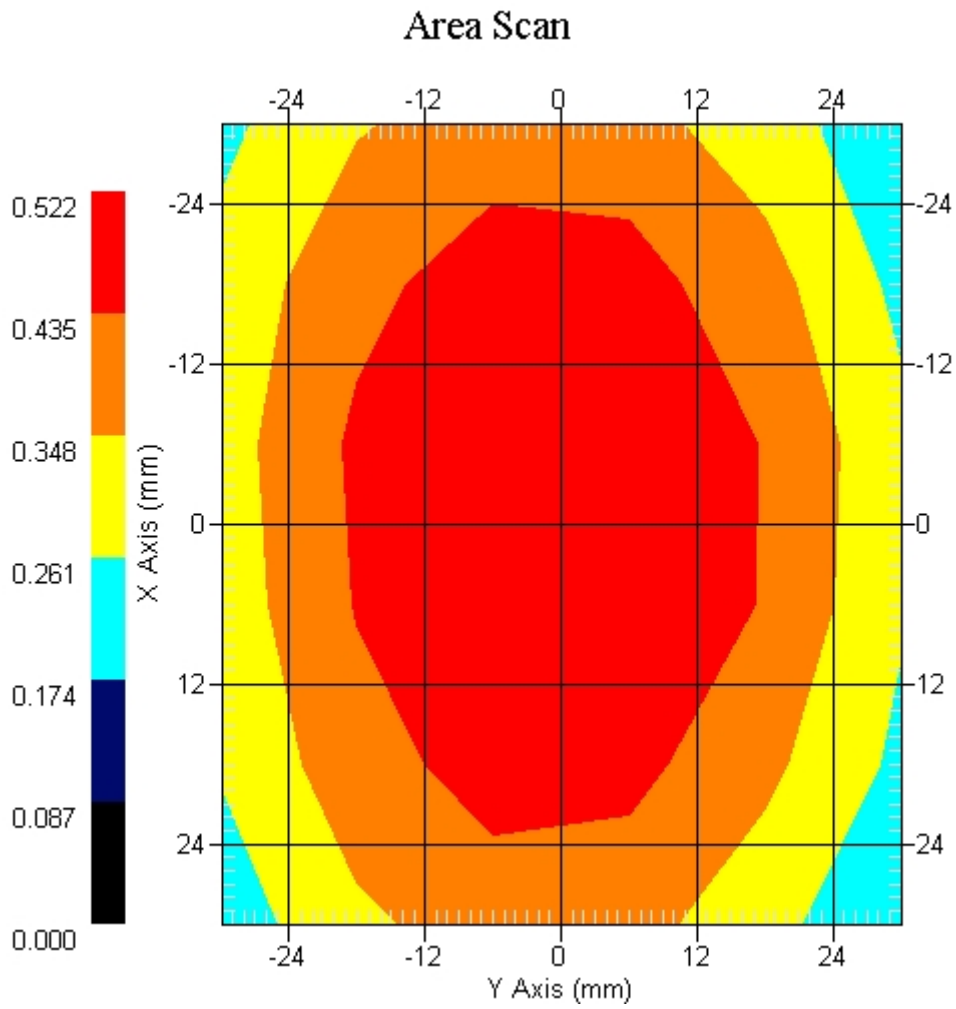
Crest Factor : 1
 Tissue Temp. : 21.50 °C
 Ambient Temp. : 22.30 °C
 Area Scan : 6x6x1 : Measurement x=12mm, y=12mm, z=4mm
 Zoom Scan : 5x5x8 : Measurement x=8mm, y=8mm, z=4mm
 Power Drift-Start : 0.514 W/kg
 Power Drift-Finish: 0.506 W/kg
 Power Drift (%) : -1.461

DUT Position : Touch
 Channel : 4183

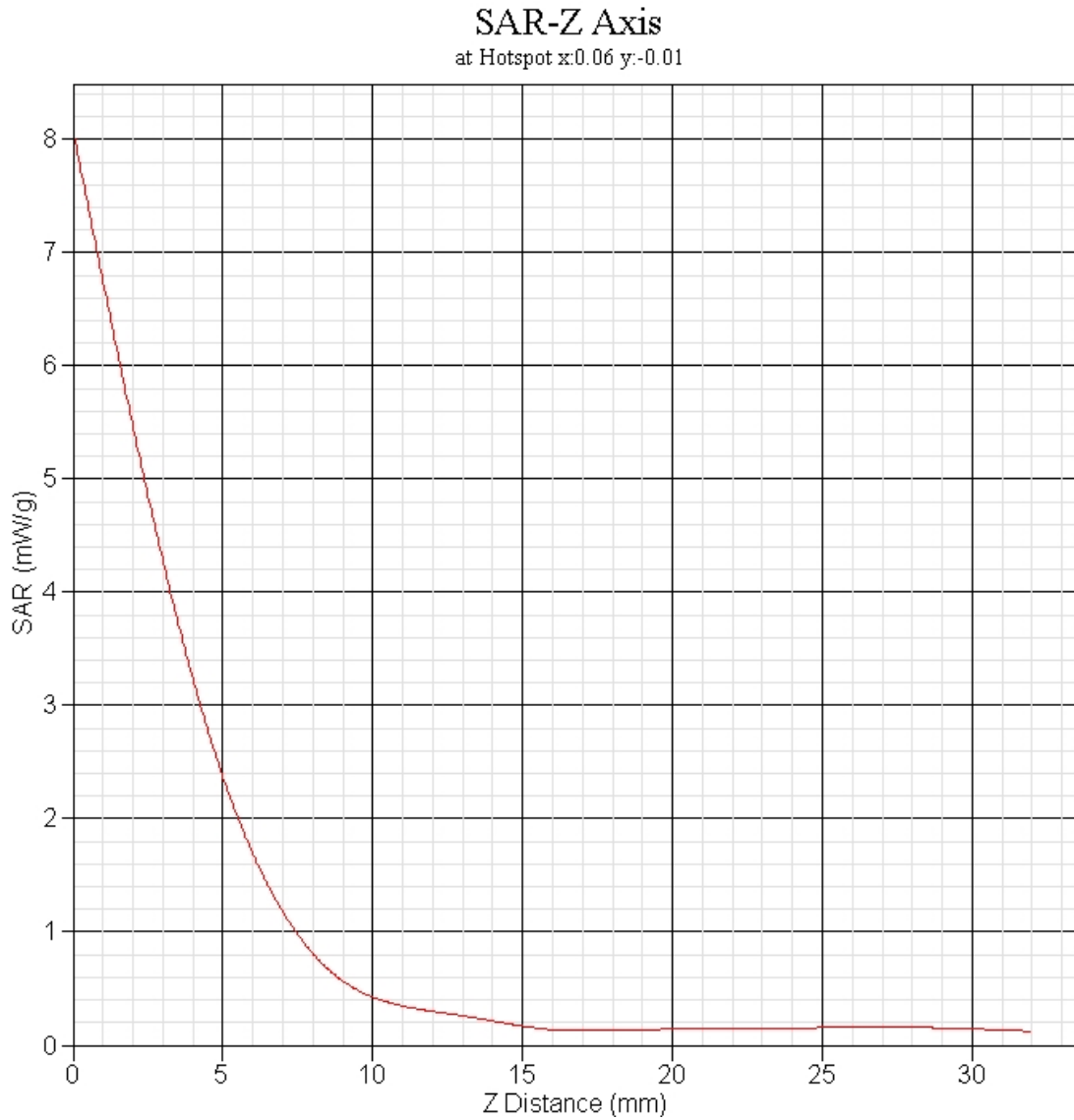


1 gram SAR value : 0.506 W/kg
 10 gram SAR value : 0.378 W/kg
 Area Scan Peak SAR : 0.520 W/kg
 Zoom Scan Peak SAR : 0.679 W/kg

This is previous page plot (zoom in)



WCDMA Band V EUT Body-worn, Z-Axis plot
Channel: 4183



SAR measurement Data

ALSAS-10U VER 2.3.6 APREL Laboratories

SAR Test Report-WCDMA Band II

Report Date : 04-Mar-2009
Measurement Date : 04-Mar-2009

Product Data

Device Name : Mobile Phone
Type : Std Form Cell Phone
Model : M900
Frequency : 1900.00 MHz
Max. Transmit Pwr : 1 W
Drift Time : 0 min(s)
Length : 119.2 mm
Width : 62.2 mm
Depth : 17.9 mm
Antenna Type : Internal

Phantom Data

Type : SAM-Left
Size (mm) : 280 x 280 x 280
Location : Left

Tissue Data

Type : HEAD
Serial No. : 324-H
Frequency : 1900.00 MHz
Last Calib. Date : 04-Mar-2009
Temperature : 21.30 °C
Ambient Temp. : 22.10 °C
Humidity : 52.00 RH%
Epsilon : 40.24 F/m
Sigma : 1.43 S/m
Density : 1000.00 kg/cu. m

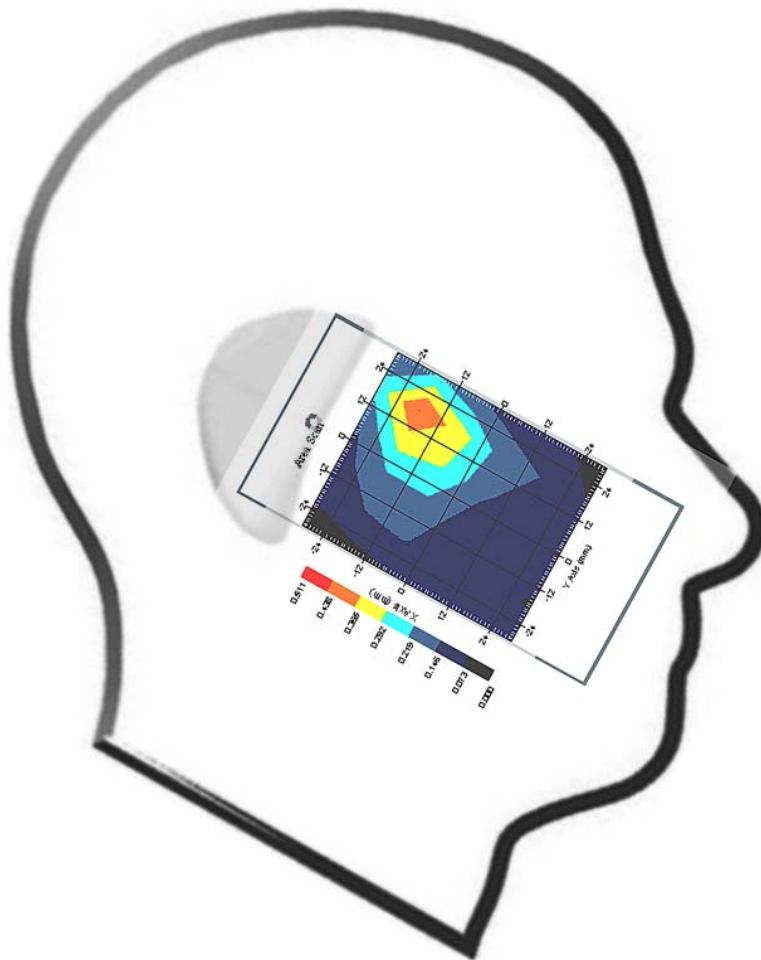
Probe Data

Name : Probe 265
Model : E020
Type : E-Field Triangle
Serial No. : 265
Last Calib. Date : 09-May-2008
Frequency : 1900.00 MHz
Duty Cycle Factor: 1
Conversion Factor: 4.51
Probe Sensitivity: 1.20 1.20 1.20 $\mu\text{V}/(\text{V}/\text{m})^2$
Compression Point: 95.00 mV
Offset : 1.56 mm

Measurement Data

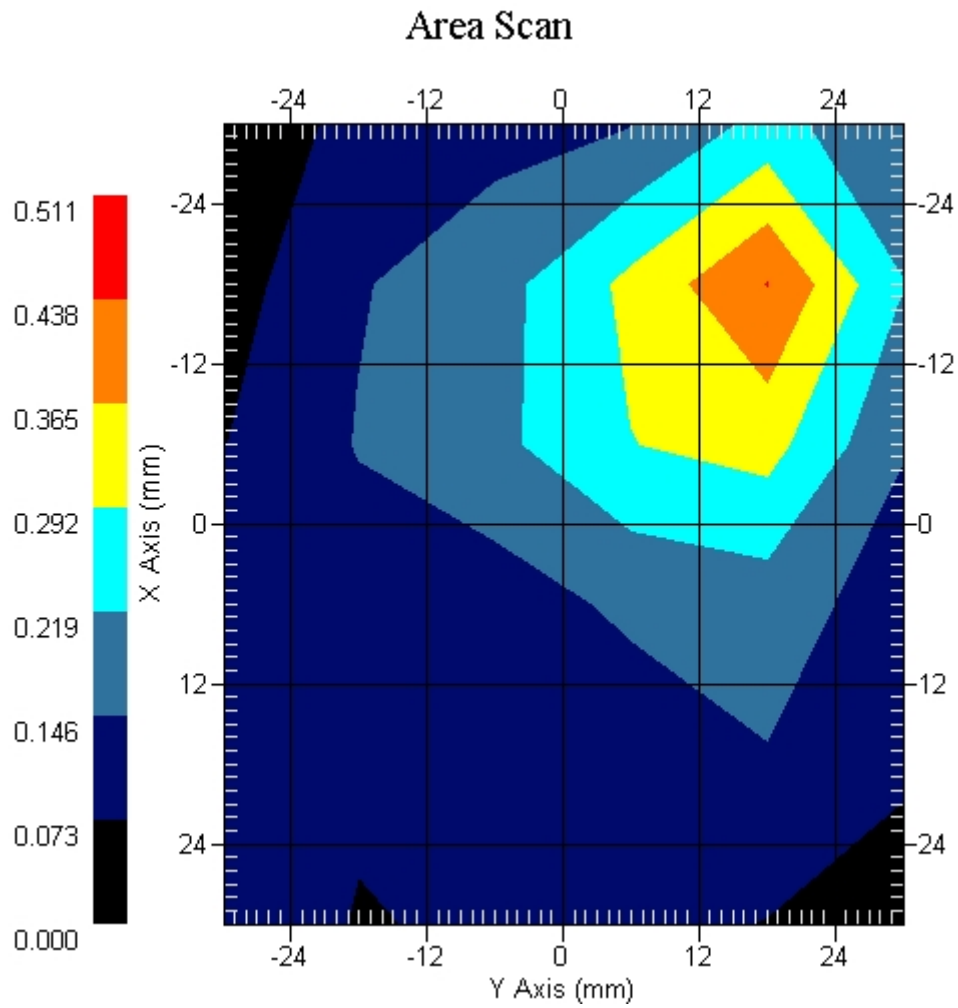
Crest Factor : 1
Tissue Temp. : 21.30 °C
Ambient Temp. : 22.10 °C
Area Scan : 6x6x1 : Measurement x=12mm, y=12mm, z=4mm
Zoom Scan : 5x5x8 : Measurement x=8mm, y=8mm, z=4mm
Power Drift-Start : 0.054 W/kg
Power Drift-Finish: 0.053 W/kg
Power Drift (%) : -2.701

DUT Position : Touch
Channel : 9262



1 gram SAR value : 0.326 W/kg
10 gram SAR value : 0.266 W/kg
Area Scan Peak SAR : 0.440 W/kg
Zoom Scan Peak SAR : 0.650 W/kg

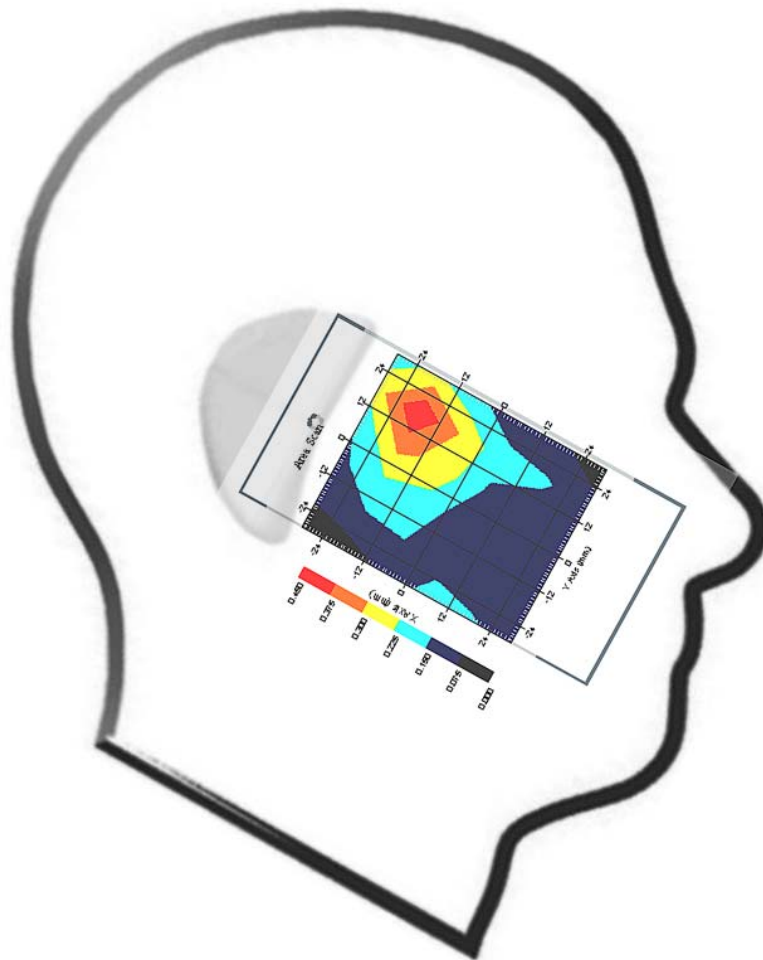
This is previous page plot (zoom in)



Measurement Data

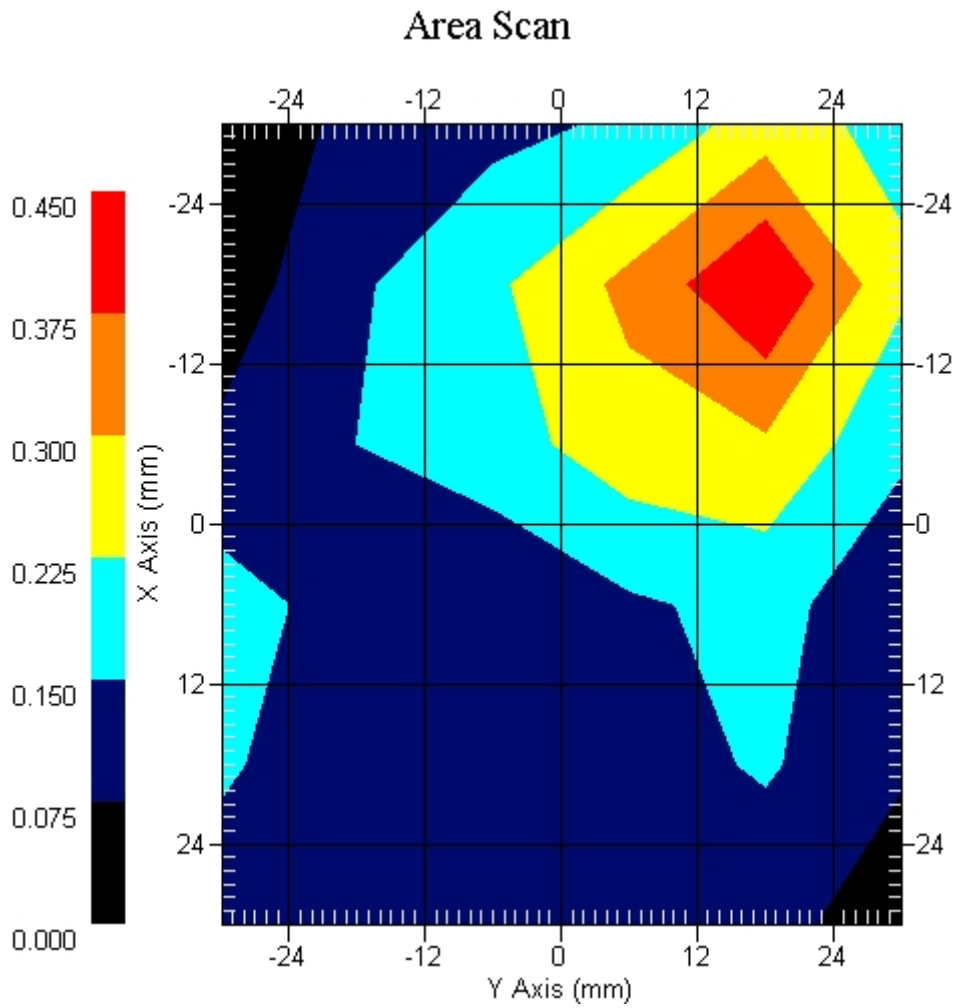
Crest Factor : 1
 Tissue Temp. : 21.30 °C
 Ambient Temp. : 22.10 °C
 Area Scan : 6x6x1 : Measurement x=12mm, y=12mm, z=4mm
 Zoom Scan : 5x5x8 : Measurement x=8mm, y=8mm, z=4mm
 Power Drift-Start : 0.056 W/kg
 Power Drift-Finish: 0.056 W/kg
 Power Drift (%) : 0.692

DUT Position : Touch
 Channel : 9400



1 gram SAR value : 0.432 W/kg
 10 gram SAR value : 0.285 W/kg
 Area Scan Peak SAR : 0.450 W/kg
 Zoom Scan Peak SAR : 0.650 W/kg

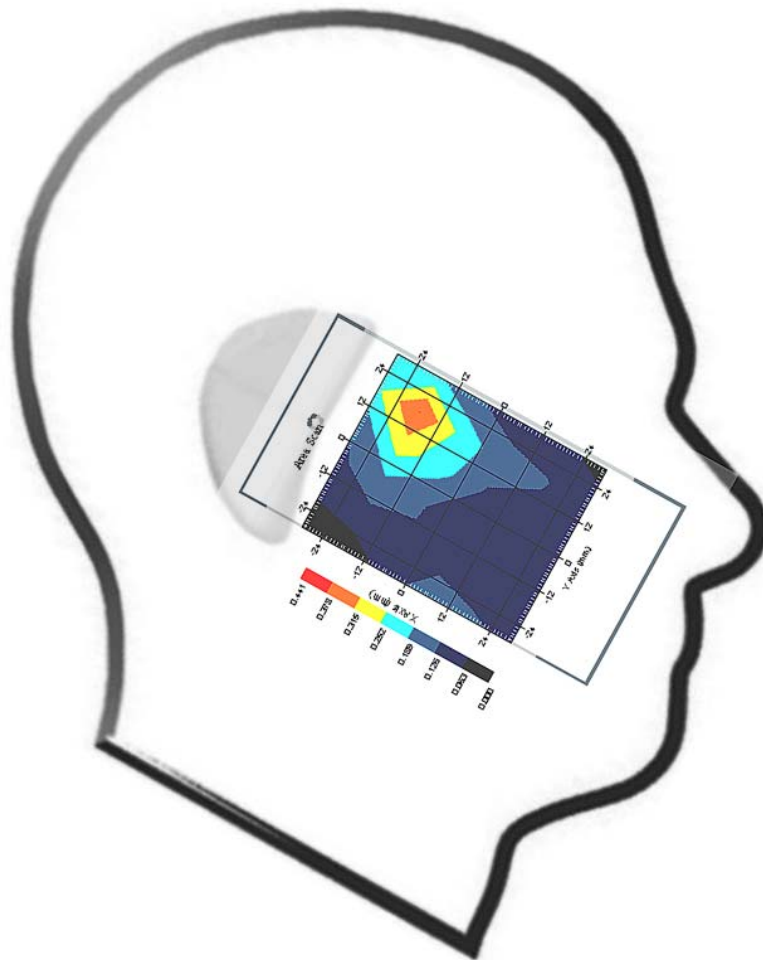
This is previous page plot (zoom in)



Measurement Data

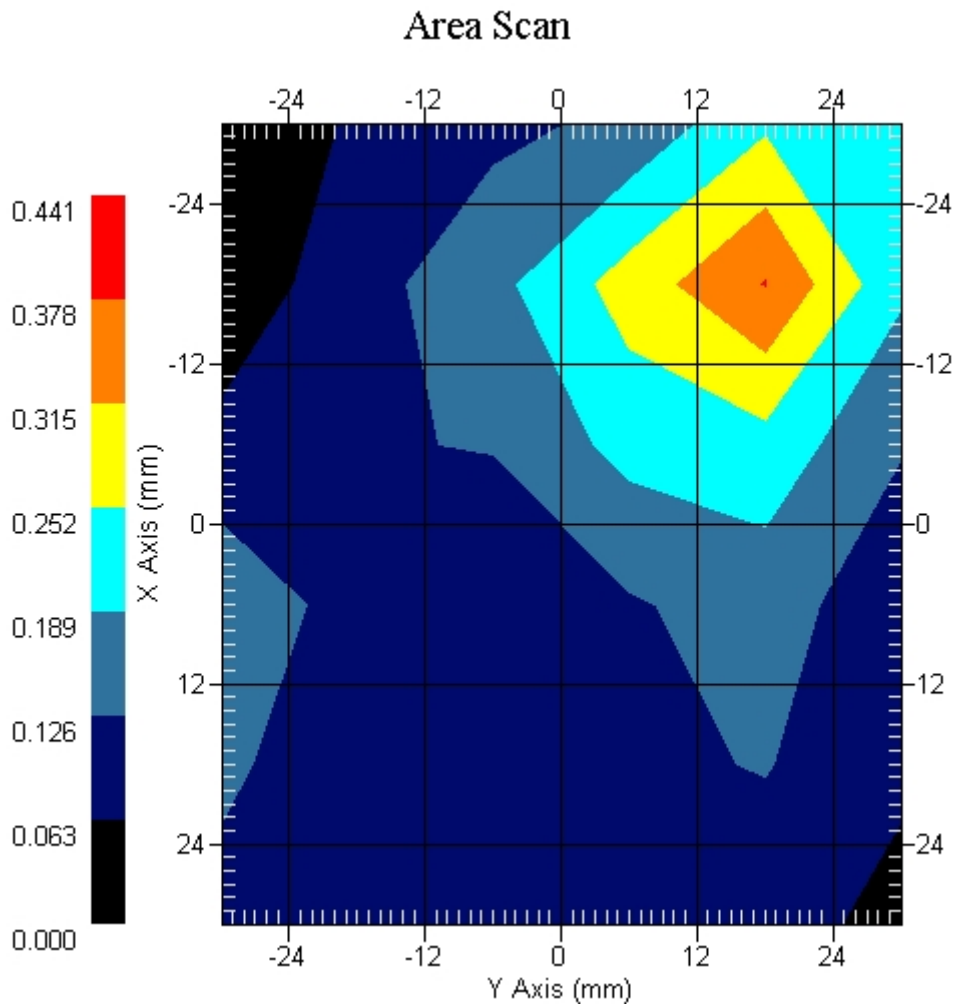
Crest Factor : 1
Tissue Temp. : 21.30 °C
Ambient Temp. : 22.10 °C
Area Scan : 6x6x1 : Measurement x=12mm, y=12mm, z=4mm
Zoom Scan : 5x5x8 : Measurement x=8mm, y=8mm, z=4mm
Power Drift-Start : 0.058 W/kg
Power Drift-Finish: 0.058 W/kg
Power Drift (%) : -0.731

DUT Position : Touch
Channel : 9538



1 gram SAR value : 0.375 W/kg
10 gram SAR value : 0.226 W/kg
Area Scan Peak SAR : 0.380 W/kg
Zoom Scan Peak SAR : 0.580 W/kg

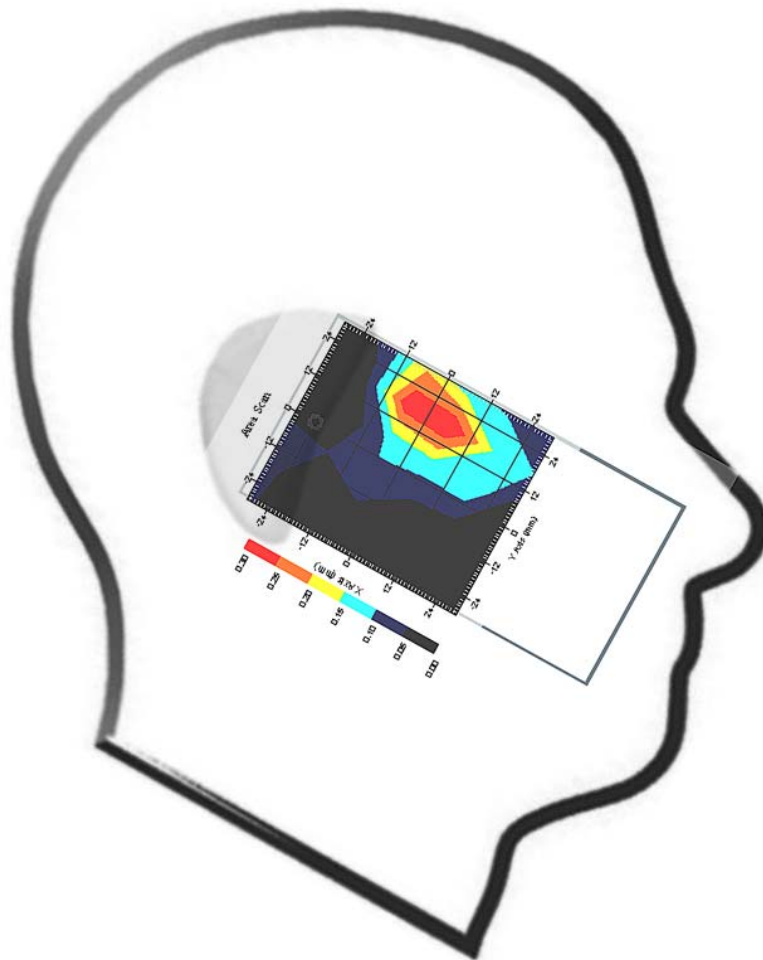
This is previous page plot (zoom in)



Measurement Data

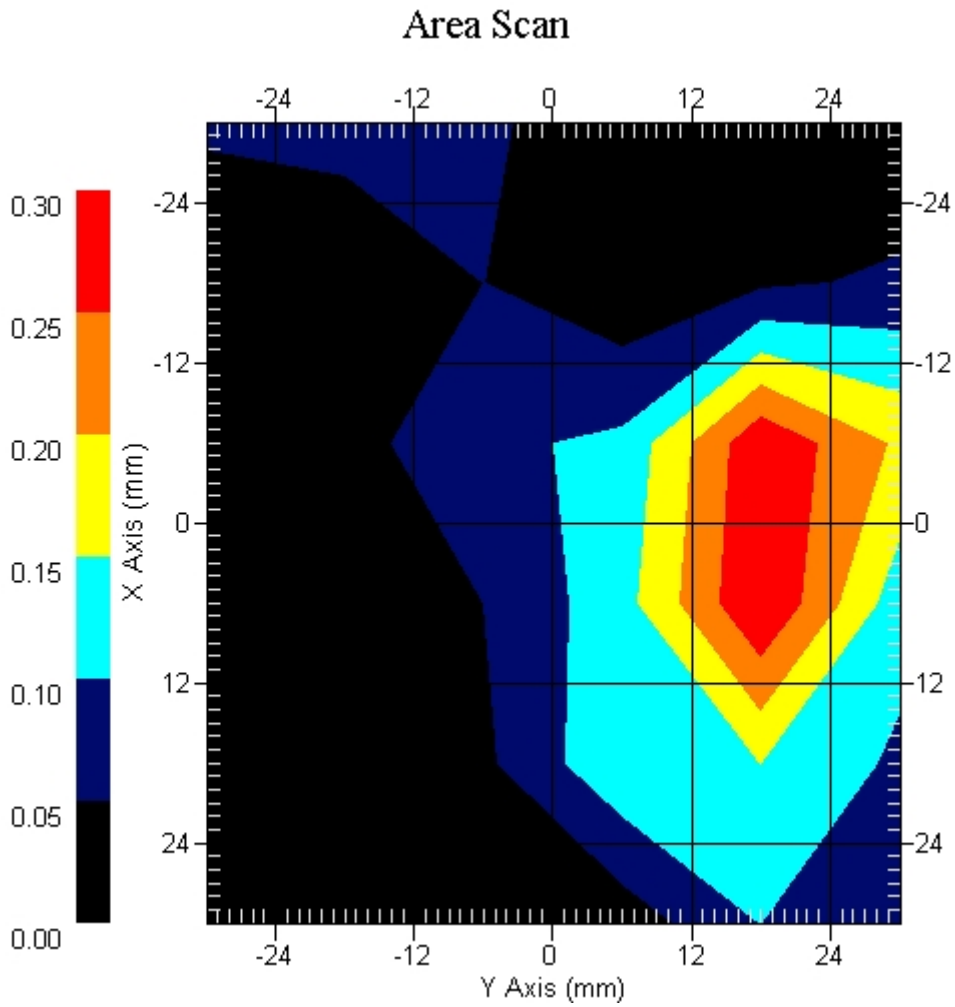
Crest Factor : 1
Tissue Temp. : 21.30 °C
Ambient Temp. : 22.10 °C
Area Scan : 6x6x1 : Measurement x=12mm, y=12mm, z=4mm
Zoom Scan : 5x5x8 : Measurement x=8mm, y=8mm, z=4mm
Power Drift-Start : 0.114 W/kg
Power Drift-Finish: 0.114 W/kg
Power Drift (%) : -0.992

DUT Position : 15° Tilt
Channel : 9262



1 gram SAR value : 0.251 W/kg
10 gram SAR value : 0.102 W/kg
Area Scan Peak SAR : 0.300 W/kg
Zoom Scan Peak SAR : 0.430 W/kg

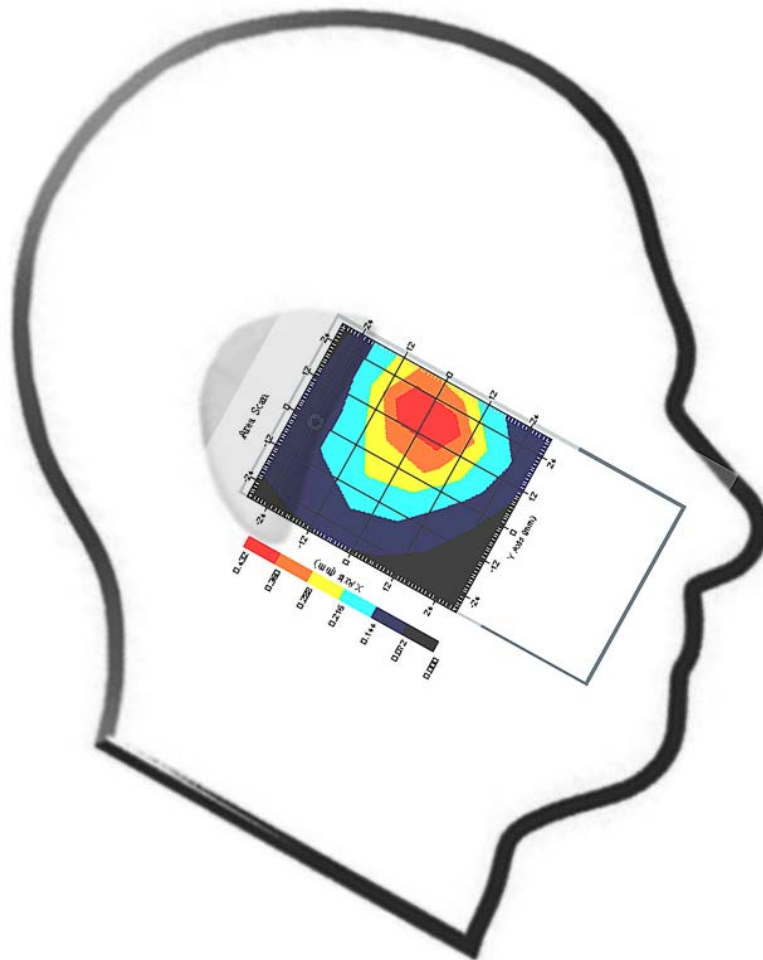
This is previous page plot (zoom in)



Measurement Data

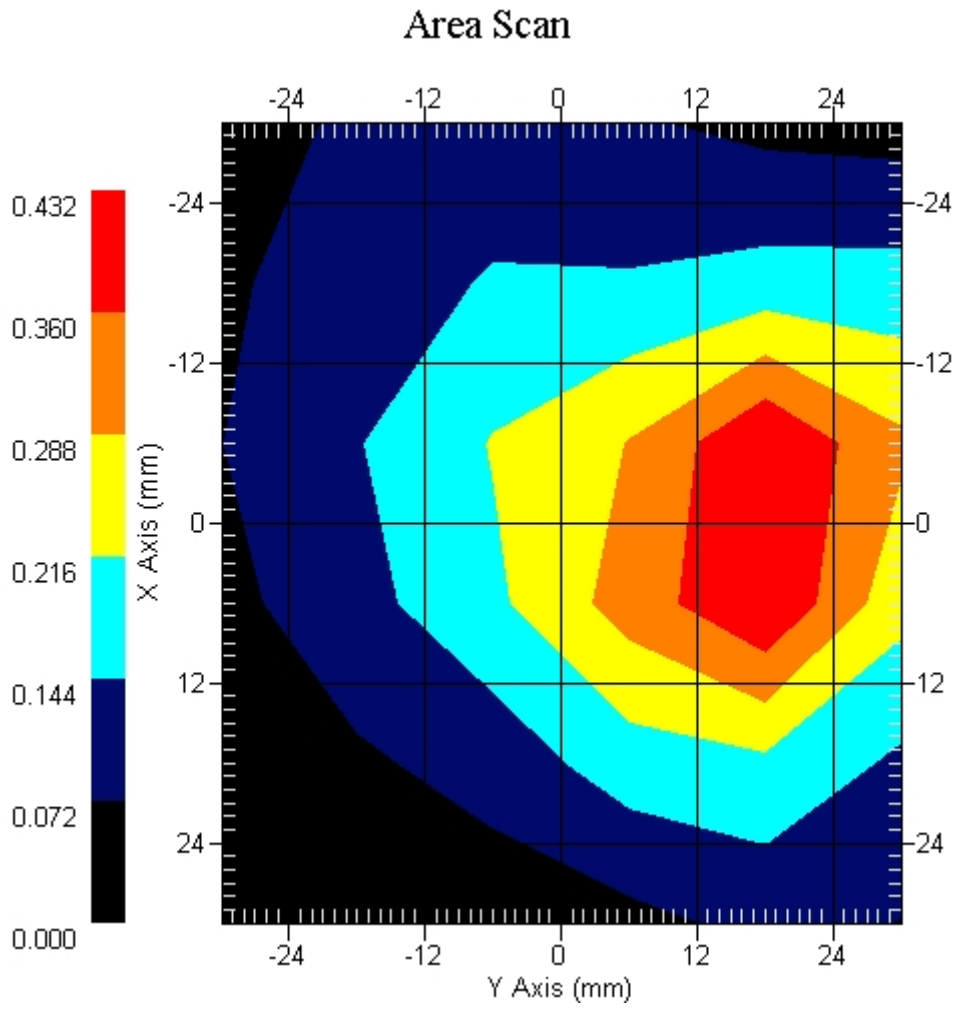
Crest Factor : 1
Tissue Temp. : 21.30 °C
Ambient Temp. : 22.10 °C
Area Scan : 6x6x1 : Measurement x=12mm, y=12mm, z=4mm
Zoom Scan : 5x5x8 : Measurement x=8mm, y=8mm, z=4mm
Power Drift-Start : 0.124 W/kg
Power Drift-Finish: 0.123 W/kg
Power Drift (%) : -1.015

DUT Position : 15° Tilt
Channel : 9400



1 gram SAR value : 0.271 W/kg
10 gram SAR value : 0.197 W/kg
Area Scan Peak SAR : 0.430 W/kg
Zoom Scan Peak SAR : 0.510 W/kg

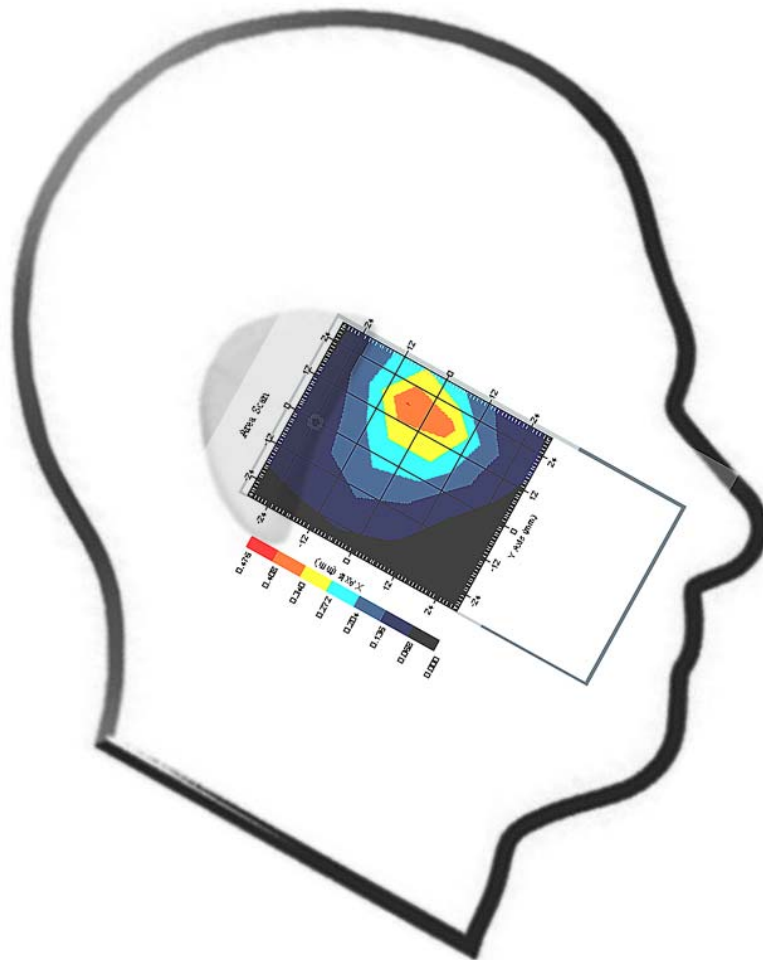
This is previous page plot (zoom in)



Measurement Data

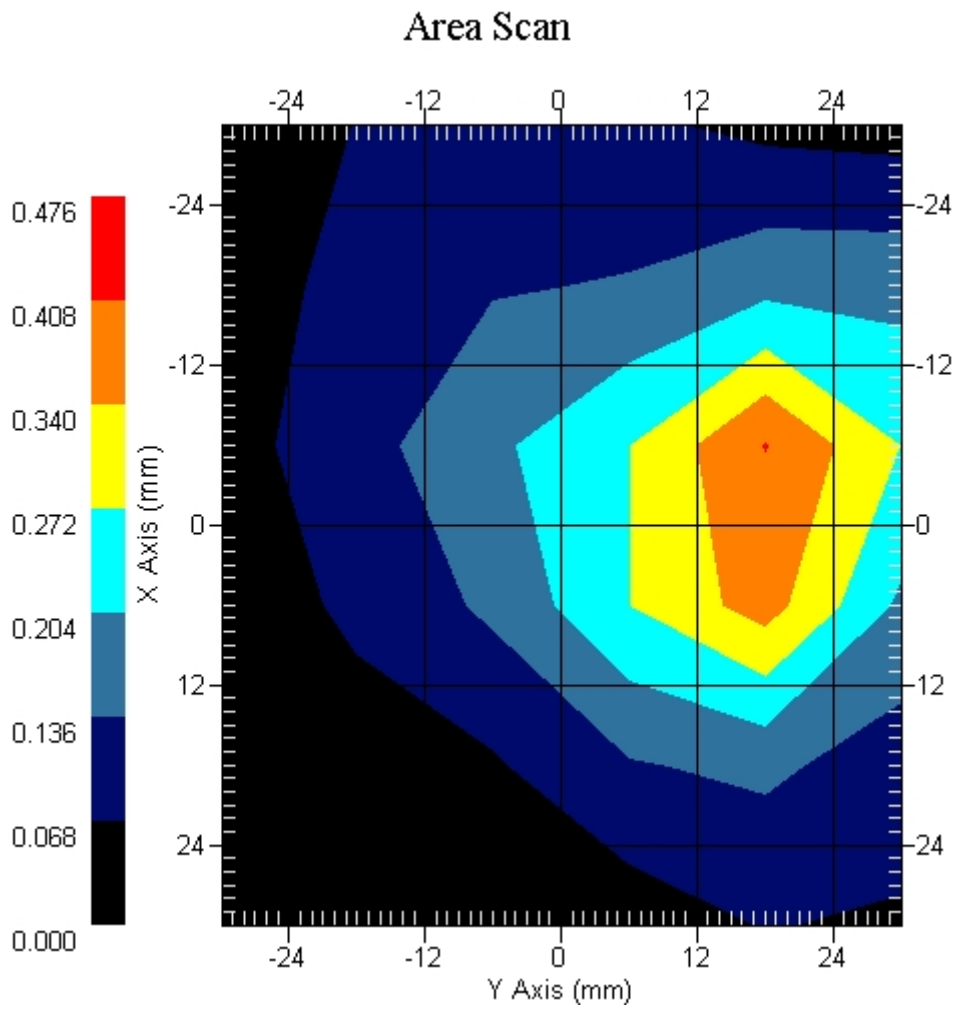
Crest Factor : 1
 Tissue Temp. : 21.30 °C
 Ambient Temp. : 22.10 °C
 Area Scan : 6x6x1 : Measurement x=12mm, y=12mm, z=4mm
 Zoom Scan : 5x5x8 : Measurement x=8mm, y=8mm, z=4mm
 Power Drift-Start : 0.103 W/kg
 Power Drift-Finish: 0.102 W/kg
 Power Drift (%) : -0.970

DUT Position : 15° Tilt
 Channel : 9538



1 gram SAR value : 0.258 W/kg
 10 gram SAR value : 0.188 W/kg
 Area Scan Peak SAR : 0.410 W/kg
 Zoom Scan Peak SAR : 0.497 W/kg

This is previous page plot (zoom in)



ALSAS-10U VER 2.3.6 APREL Laboratories
SAR Test Report-WCDMA Band IIReport Date : 04-Mar-2009
Measurement Date : 04-Mar-2009

Product Data

Device Name : Mobile Phone
Type : Std Form Cell Phone
Model : M900
Frequency : 1900.00 MHz
Max. Transmit Pwr : 1 W
Drift Time : 0 min(s)
Length : 119.2 mm
Width : 62.2 mm
Depth : 17.9 mm
Antenna Type : Internal

Phantom Data

Type : SAM-Right
Size (mm) : 280 x 280 x 280
Location : Right

Tissue Data

Type : HEAD
Serial No. : 324-H
Frequency : 1900.00 MHz
Last Calib. Date : 04-Mar-2009
Temperature : 21.30 °C
Ambient Temp. : 22.10 °C
Humidity : 52.00 RH%
Epsilon : 40.24 F/m
Sigma : 1.43 S/m
Density : 1000.00 kg/cu. m

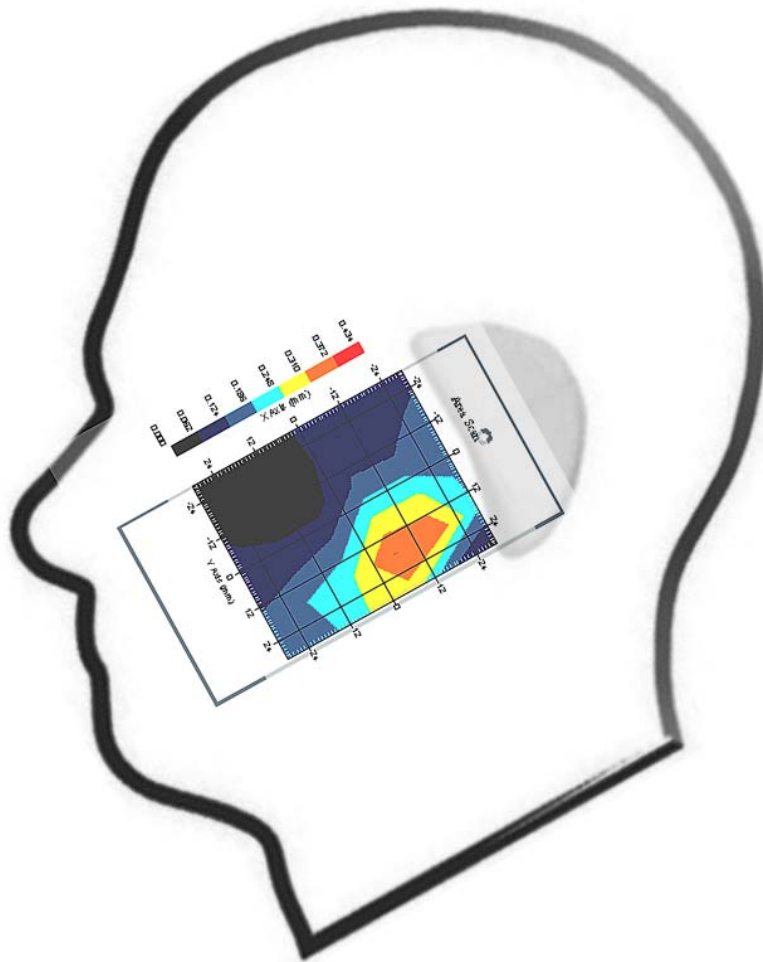
Probe Data

Name : Probe 265
Model : E020
Type : E-Field Triangle
Serial No. : 265
Last Calib. Date : 09-May-2008
Frequency : 1900.00 MHz
Duty Cycle Factor: 1
Conversion Factor: 4.51
Probe Sensitivity: 1.20 1.20 1.20 $\mu\text{V}/(\text{V}/\text{m})^2$
Compression Point: 95.00 mV
Offset : 1.56 mm

Measurement Data

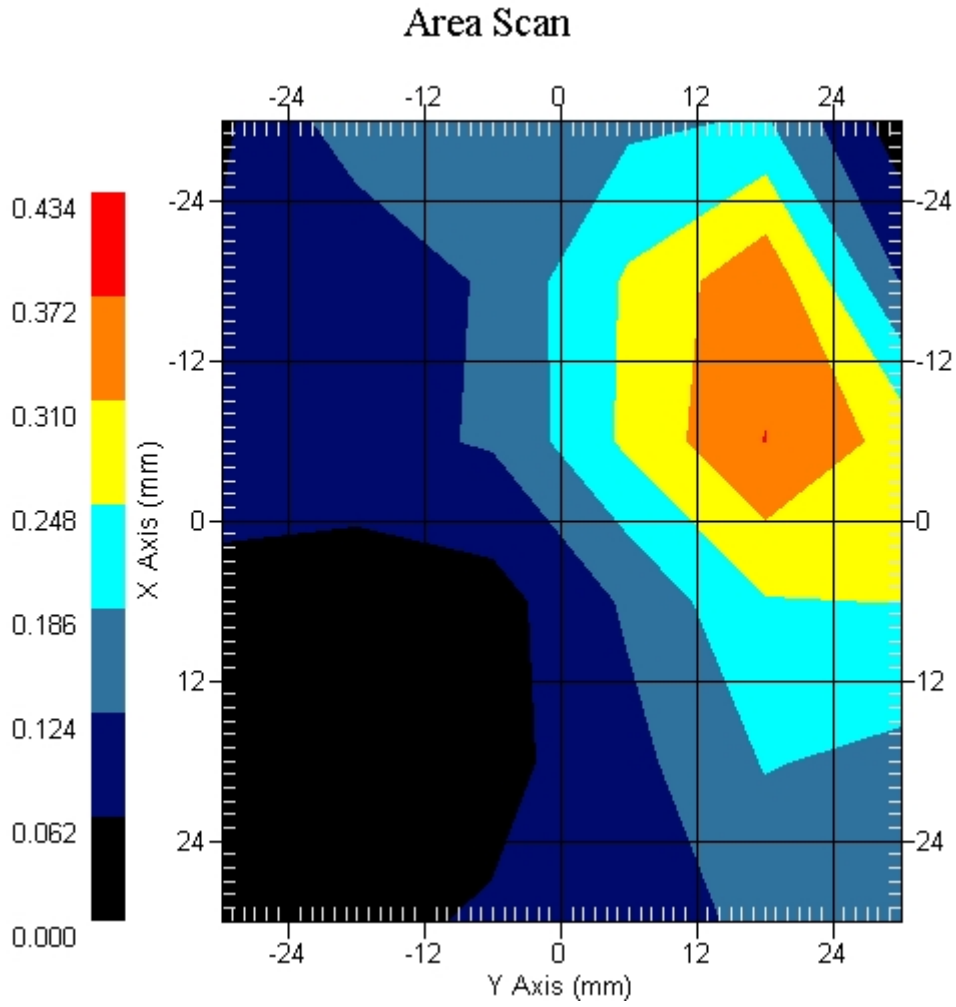
Crest Factor : 1
Tissue Temp. : 21.30 °C
Ambient Temp. : 22.10 °C
Area Scan : 6x6x1 : Measurement x=12mm, y=12mm, z=4mm
Zoom Scan : 5x5x8 : Measurement x=8mm, y=8mm, z=4mm
Power Drift-Start : 0.050 W/kg
Power Drift-Finish: 0.051 W/kg
Power Drift (%) : 1.233

DUT Position : Touch
Channel : 9262



1 gram SAR value : 0.364 W/kg
10 gram SAR value : 0.219 W/kg
Area Scan Peak SAR : 0.373 W/kg
Zoom Scan Peak SAR : 0.570 W/kg

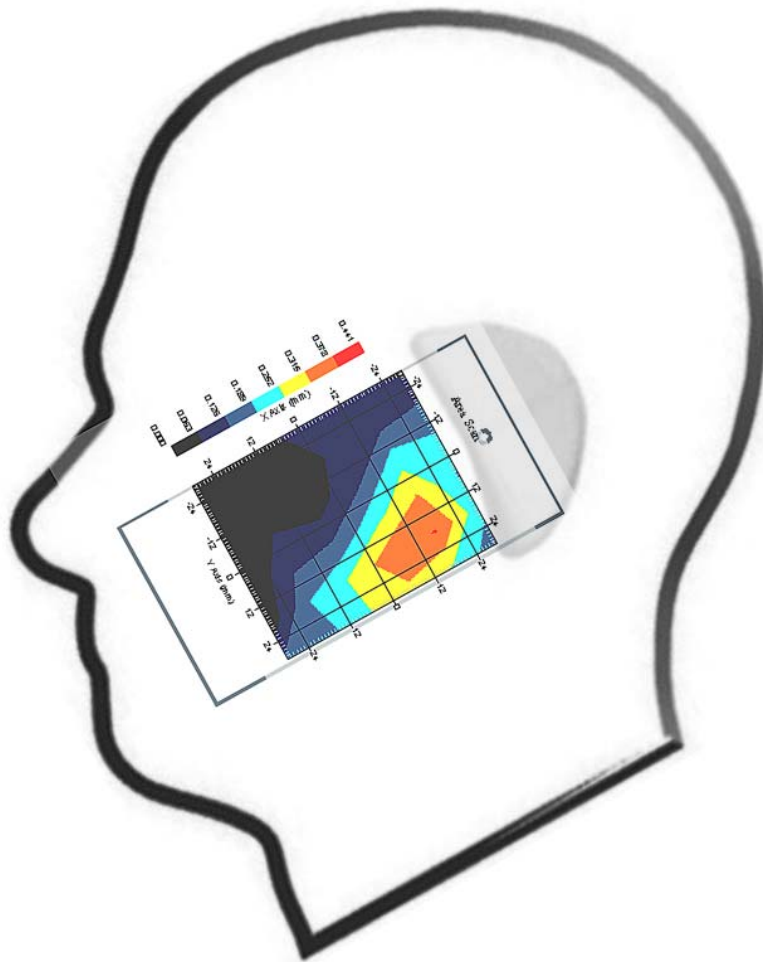
This is previous page plot (zoom in)



Measurement Data

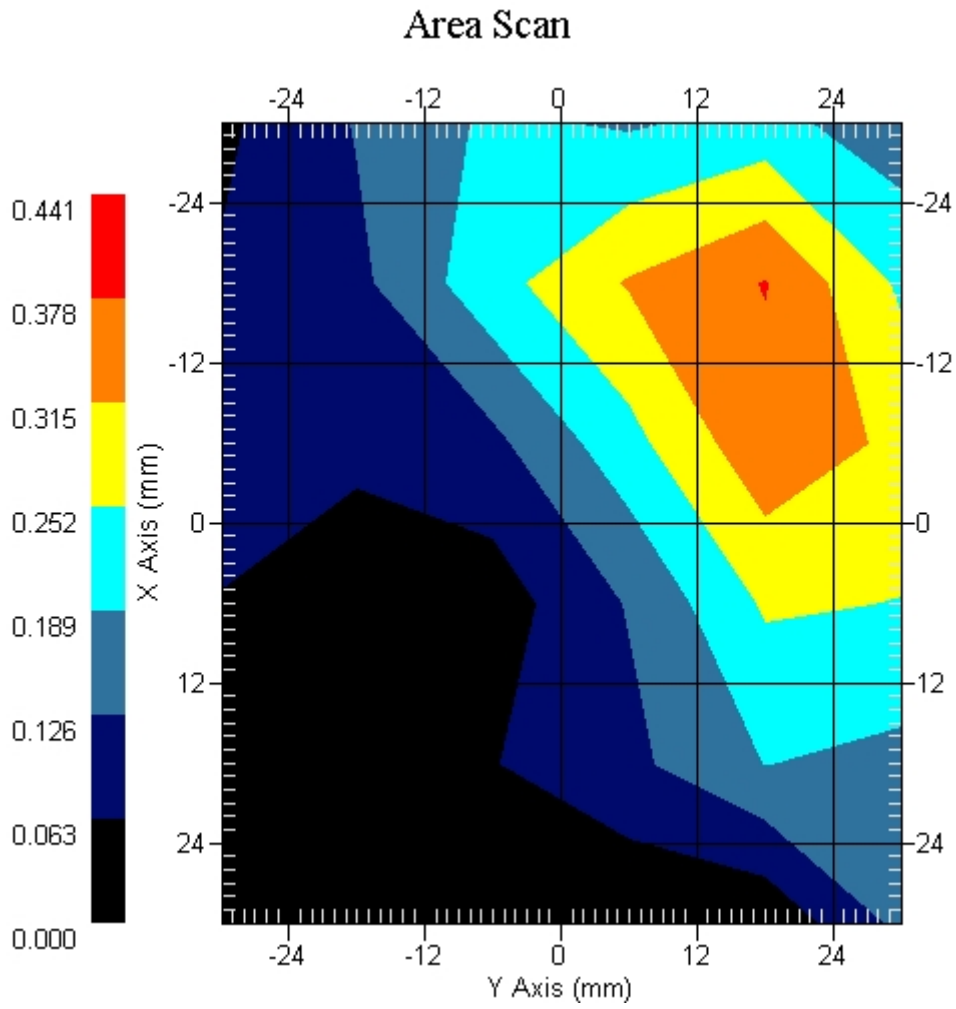
Crest Factor : 1
Tissue Temp. : 21.30 °C
Ambient Temp. : 22.10 °C
Area Scan : 6x6x1 : Measurement x=12mm, y=12mm, z=4mm
Zoom Scan : 5x5x8 : Measurement x=8mm, y=8mm, z=4mm
Power Drift-Start : 0.069 W/kg
Power Drift-Finish: 0.070 W/kg
Power Drift (%) : 1.449

DUT Position : Touch
Channel : 9400



1 gram SAR value : 0.375 W/kg
10 gram SAR value : 0.225 W/kg
Area Scan Peak SAR : 0.380 W/kg
Zoom Scan Peak SAR : 0.581 W/kg

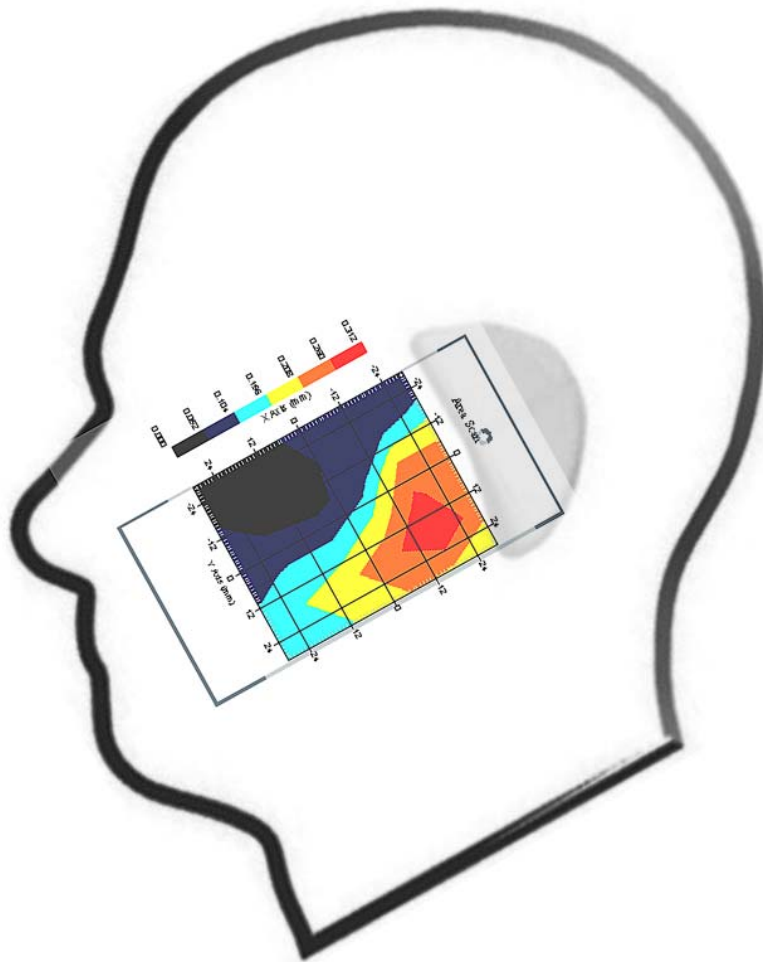
This is previous page plot (zoom in)



Measurement Data

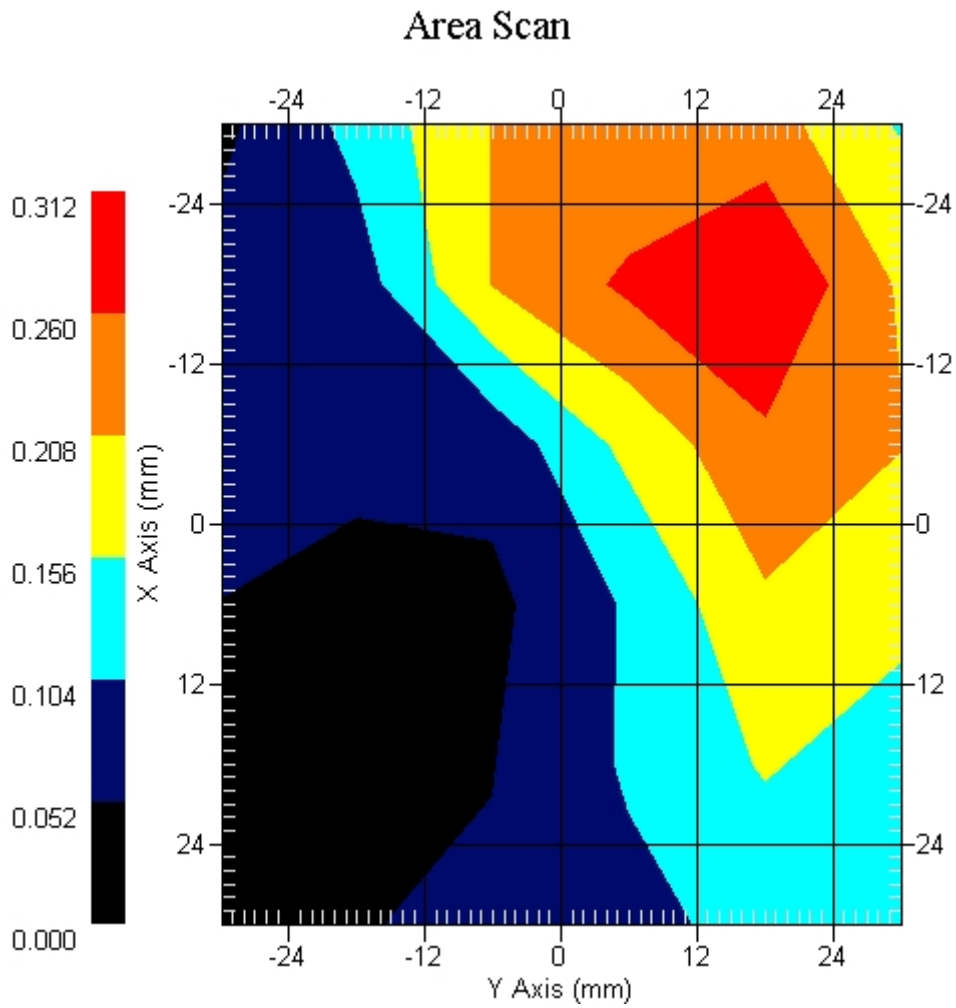
Crest Factor : 1
Tissue Temp. : 21.30 °C
Ambient Temp. : 22.10 °C
Area Scan : 6x6x1 : Measurement x=12mm, y=12mm, z=4mm
Zoom Scan : 5x5x8 : Measurement x=8mm, y=8mm, z=4mm
Power Drift-Start : 0.083 W/kg
Power Drift-Finish: 0.080 W/kg
Power Drift (%) : -3.614

DUT Position : Touch
Channel : 9538



1 gram SAR value : 0.301 W/kg
10 gram SAR value : 0.158 W/kg
Area Scan Peak SAR : 0.310 W/kg
Zoom Scan Peak SAR : 0.520 W/kg

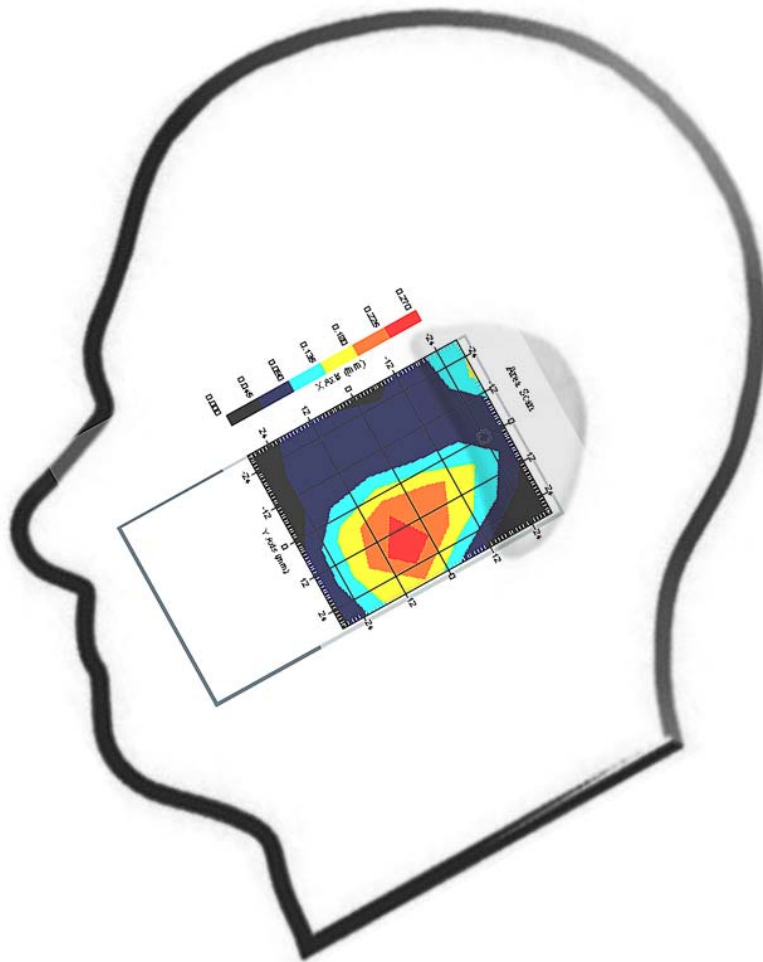
This is previous page plot (zoom in)



Measurement Data

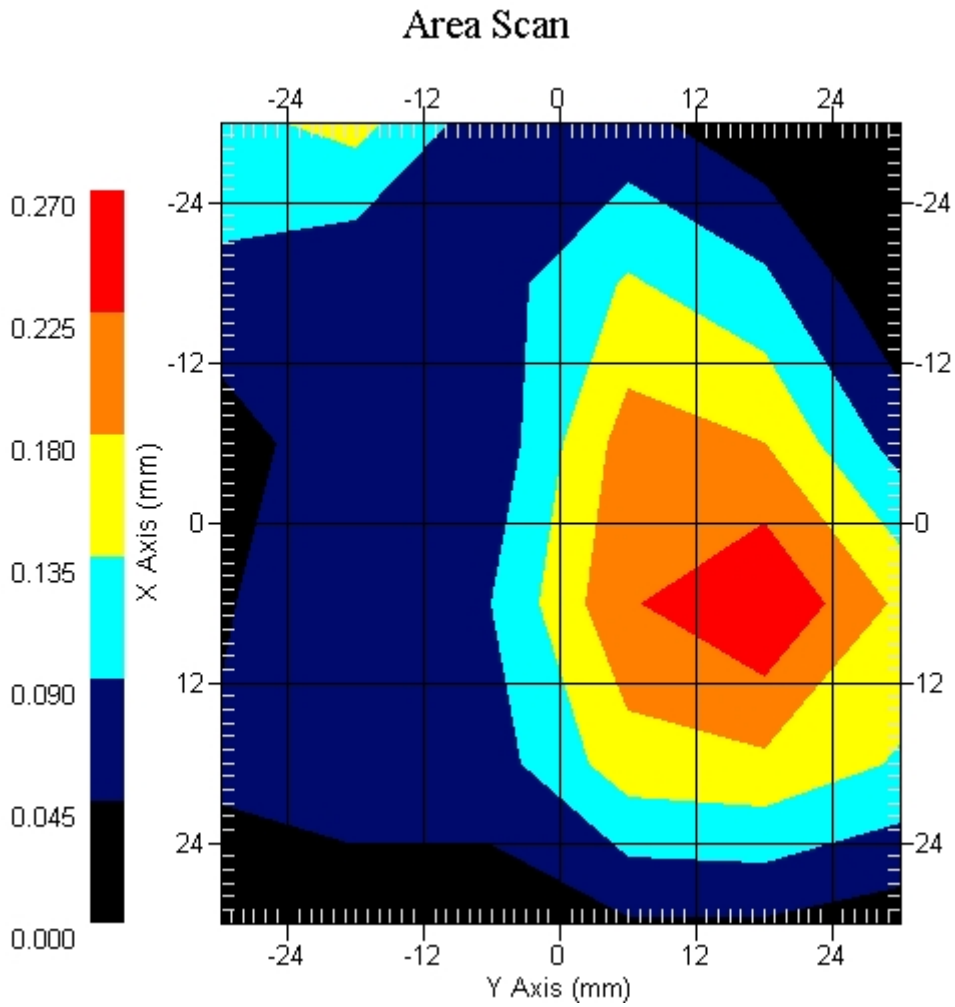
Crest Factor : 1
Tissue Temp. : 21.30 °C
Ambient Temp. : 22.10 °C
Area Scan : 6x6x1 : Measurement x=12mm, y=12mm, z=4mm
Zoom Scan : 5x5x8 : Measurement x=8mm, y=8mm, z=4mm
Power Drift-Start : 0.116 W/kg
Power Drift-Finish: 0.118 W/kg
Power Drift (%) : 1.807

DUT Position : 15° Tilt
Channel : 9262



1 gram SAR value : 0.202 W/kg
10 gram SAR value : 0.131 W/kg
Area Scan Peak SAR : 0.270 W/kg
Zoom Scan Peak SAR : 0.330 W/kg

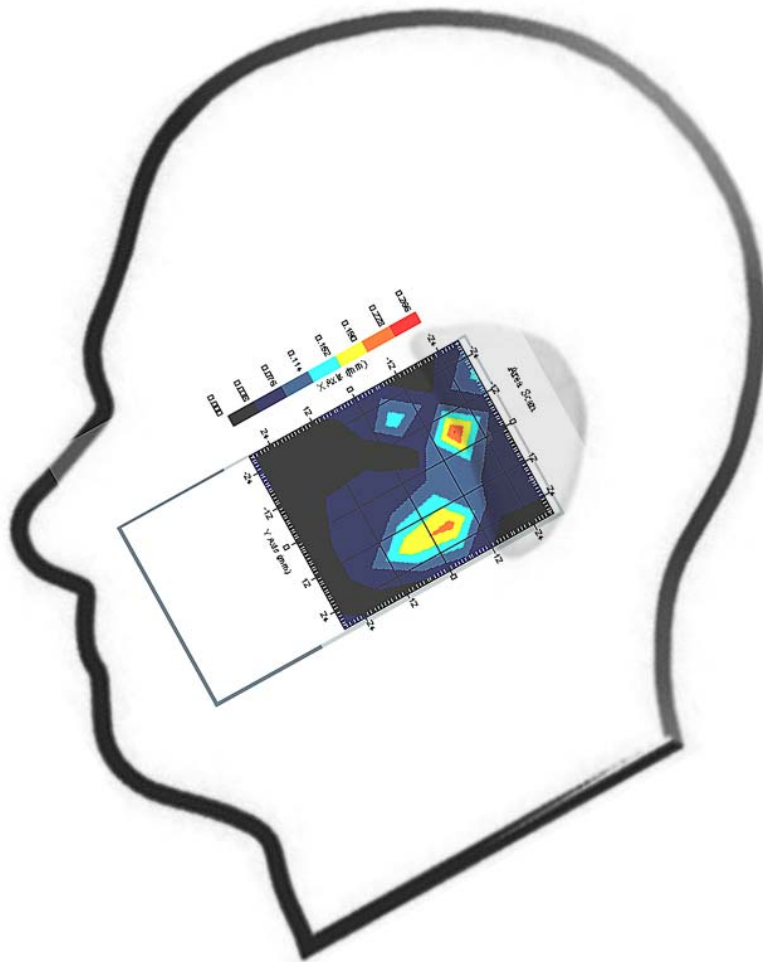
This is previous page plot (zoom in)



Measurement Data

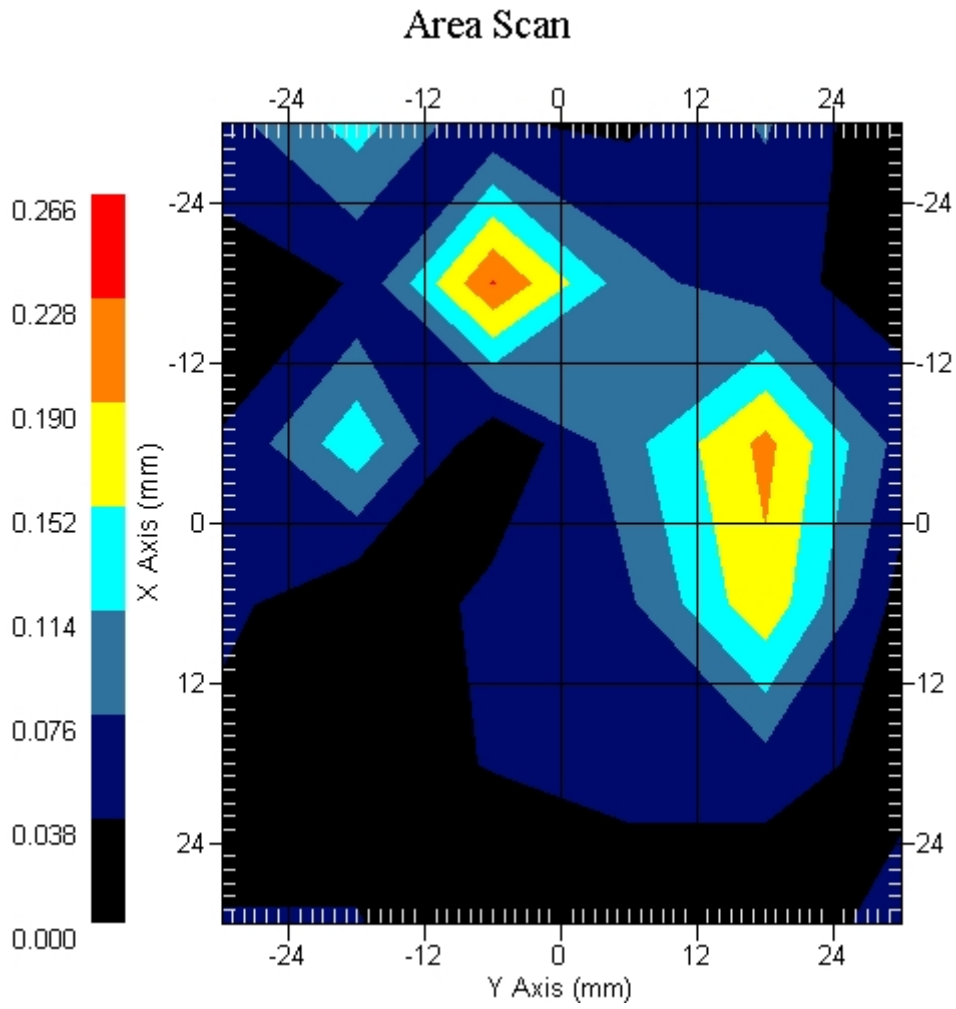
Crest Factor : 1
Tissue Temp. : 21.30 °C
Ambient Temp. : 22.10 °C
Area Scan : 6x6x1 : Measurement x=12mm, y=12mm, z=4mm
Zoom Scan : 5x5x8 : Measurement x=8mm, y=8mm, z=4mm
Power Drift-Start : 0.103 W/kg
Power Drift-Finish: 0.098 W/kg
Power Drift (%) : -4.854

DUT Position : 15° Tilt
Channel : 9400



1 gram SAR value : 0.167 W/kg
10 gram SAR value : 0.098 W/kg
Area Scan Peak SAR : 0.230 W/kg
Zoom Scan Peak SAR : 0.297 W/kg

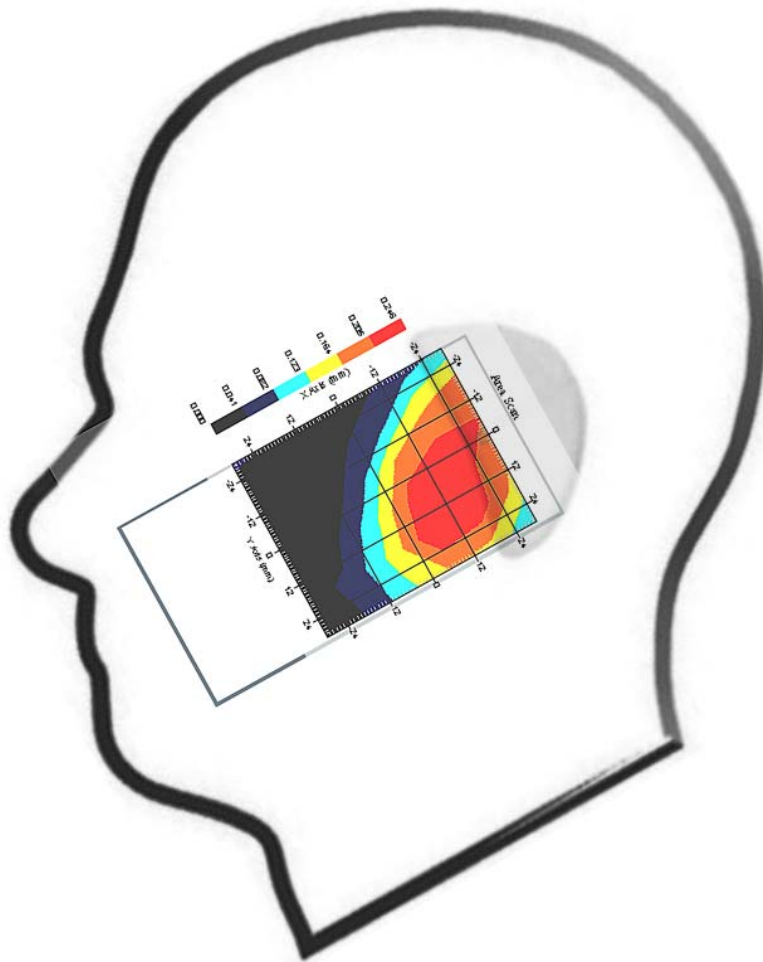
This is previous page plot (zoom in)



Measurement Data

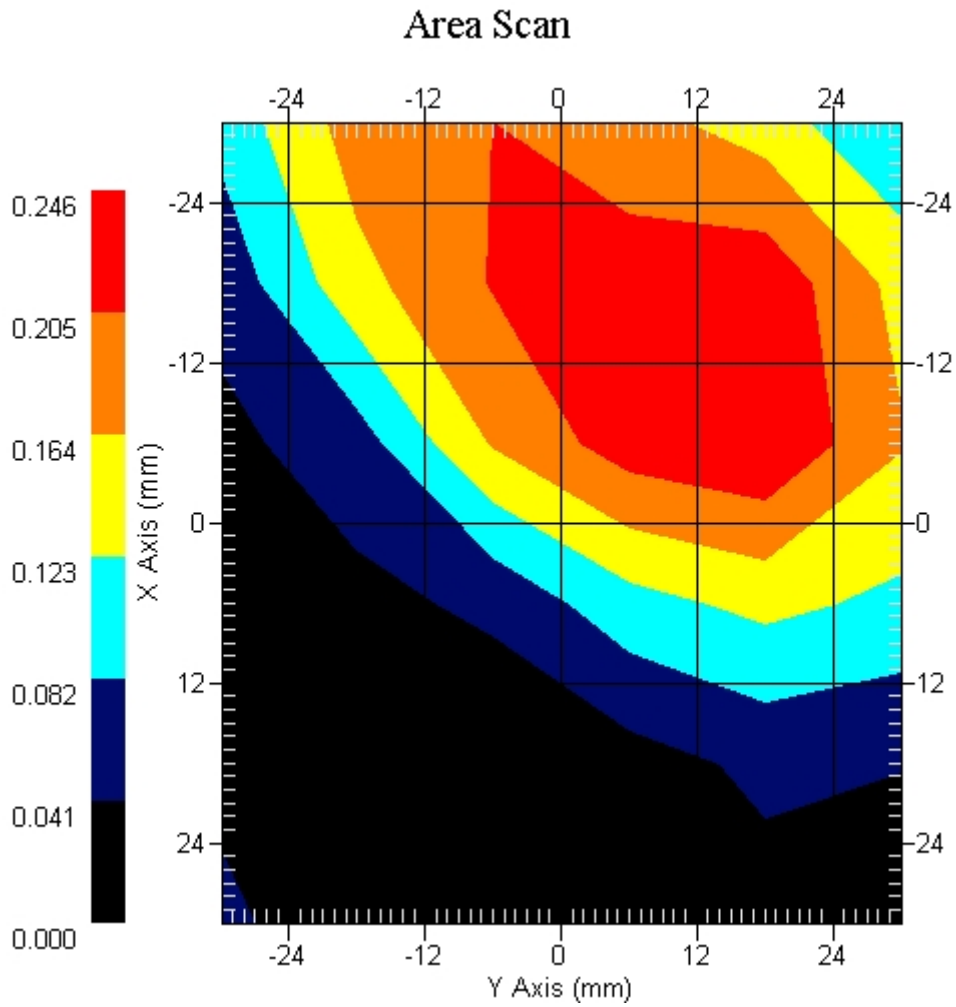
Crest Factor : 1
Tissue Temp. : 21.30 °C
Ambient Temp. : 22.10 °C
Area Scan : 6x6x1 : Measurement x=12mm, y=12mm, z=4mm
Zoom Scan : 5x5x8 : Measurement x=8mm, y=8mm, z=4mm
Power Drift-Start : 0.141 W/kg
Power Drift-Finish: 0.143 W/kg
Power Drift (%) : 1.215

DUT Position : 15° Tilt
Channel : 9538



1 gram SAR value : 0.183 W/kg
10 gram SAR value : 0.102 W/kg
Area Scan Peak SAR : 0.244 W/kg
Zoom Scan Peak SAR : 0.310 W/kg

This is previous page plot (zoom in)



ALSAS-10U VER 2.3.6 APREL Laboratories
SAR Test Report-WCDMA Band IIReport Date : 04-Mar-2009
Measurement Date : 04-Mar-2009

Product Data

Device Name : Mobile Phone
Type : Std Form Cell Phone
Model : M900
Frequency : 1900.00 MHz
Max. Transmit Pwr : 1 W
Drift Time : 0 min(s)
Length : 119.2 mm
Width : 62.2 mm
Depth : 17.9 mm
Antenna Type : Internal

Phantom Data

Type : Uni-Phantom
Size (mm) : 280 x 280 x 200
Location : Center

Tissue Data

Type : BODY
Serial No. : 324-B
Frequency : 1900.00 MHz
Last Calib. Date : 04-Mar-2009
Temperature : 21.30 °C
Ambient Temp. : 22.10 °C
Humidity : 52.00 RH%
Epsilon : 53.67 F/m
Sigma : 1.54 S/m
Density : 1000.00 kg/cu. m

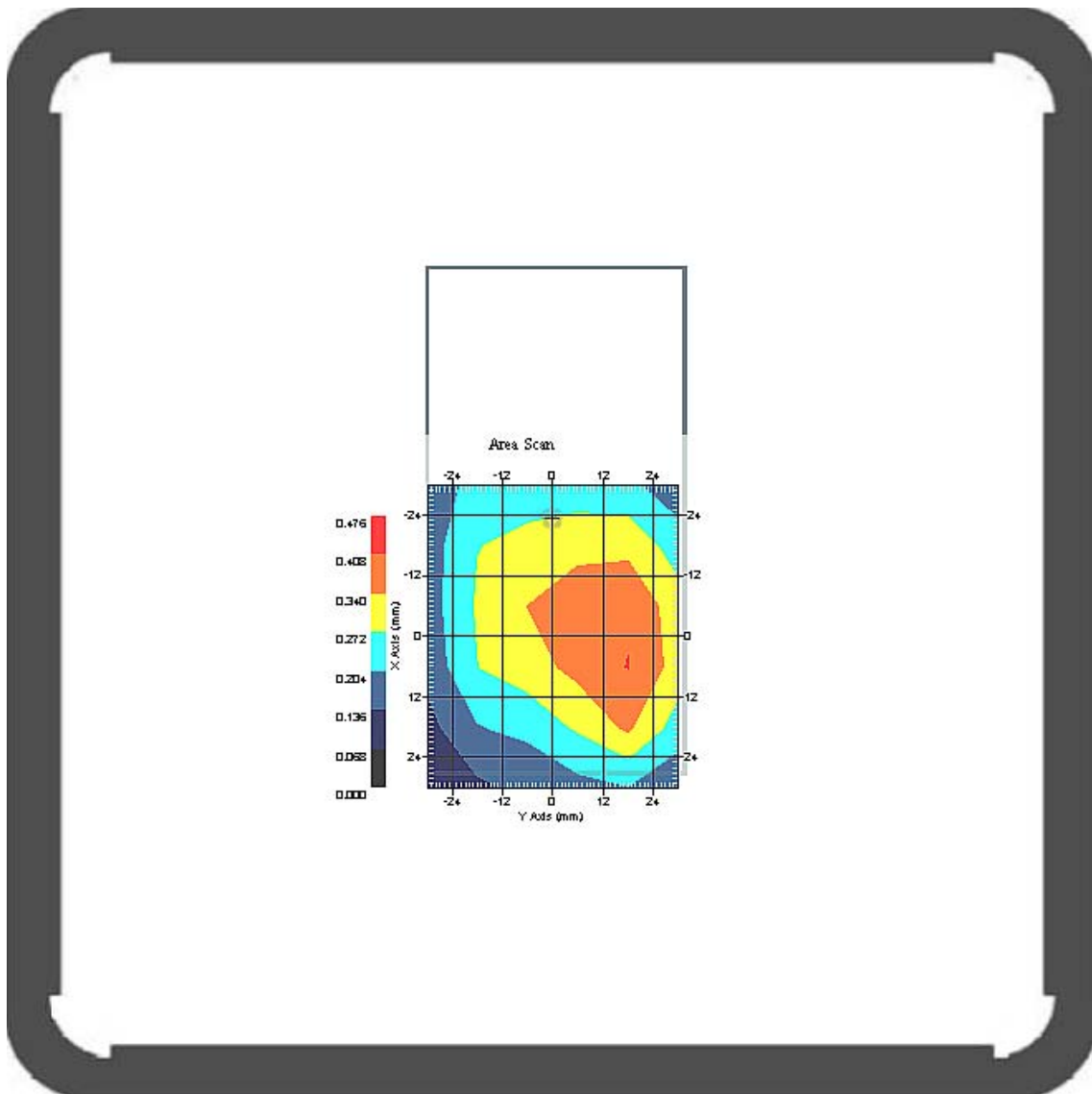
Probe Data

Name : Probe 265
Model : E020
Type : E-Field Triangle
Serial No. : 265
Last Calib. Date : 09-May-2008
Frequency : 1900.00 MHz
Duty Cycle Factor: 1
Conversion Factor: 5.1
Probe Sensitivity: 1.20 1.20 1.20 $\mu\text{V}/(\text{V}/\text{m})^2$
Compression Point: 95.00 mV
Offset : 1.56 mm

Measurement Data

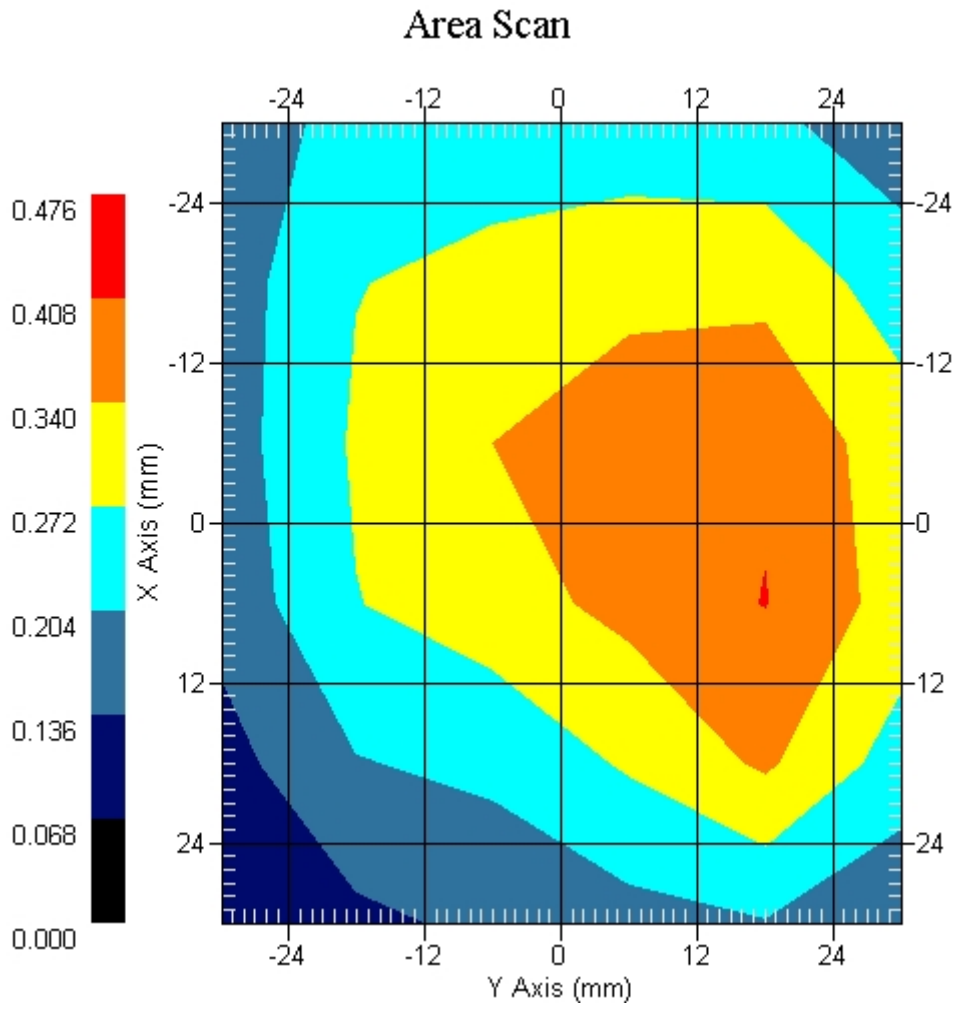
Crest Factor : 1
 Tissue Temp. : 21.30 °C
 Ambient Temp. : 22.10 °C
 Area Scan : 6x6x1 : Measurement x=12mm, y=12mm, z=4mm
 Zoom Scan : 5x5x8 : Measurement x=8mm, y=8mm, z=4mm
 Power Drift-Start : 0.200 W/kg
 Power Drift-Finish: 0.210 W/kg
 Power Drift (%) : 4.891

DUT Position : Touch
 Channel : 9262



1 gram SAR value : 0.371 W/kg
 10 gram SAR value : 0.230 W/kg
 Area Scan Peak SAR : 0.410 W/kg
 Zoom Scan Peak SAR : 0.670 W/kg

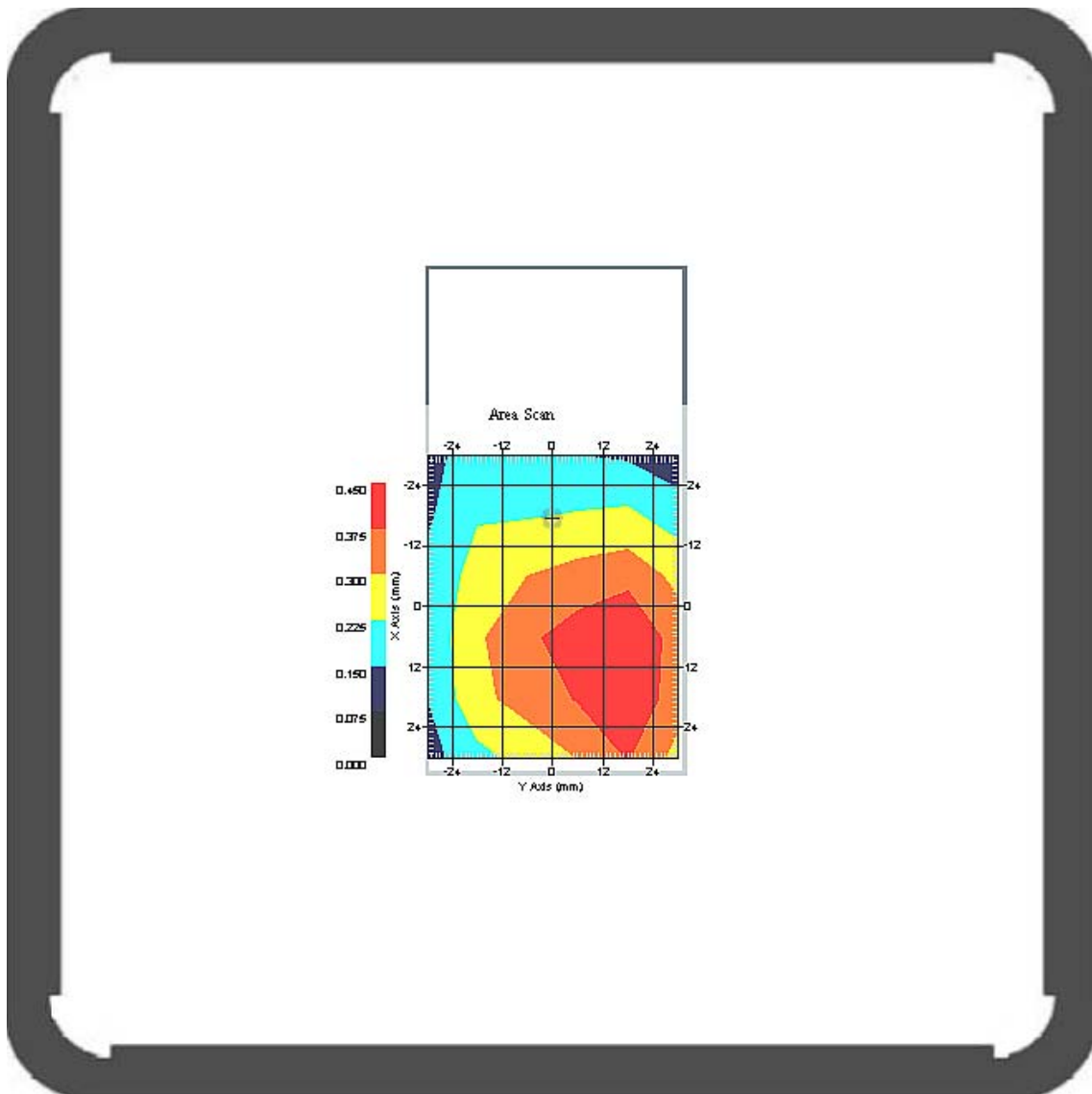
This is previous page plot (zoom in)



Measurement Data

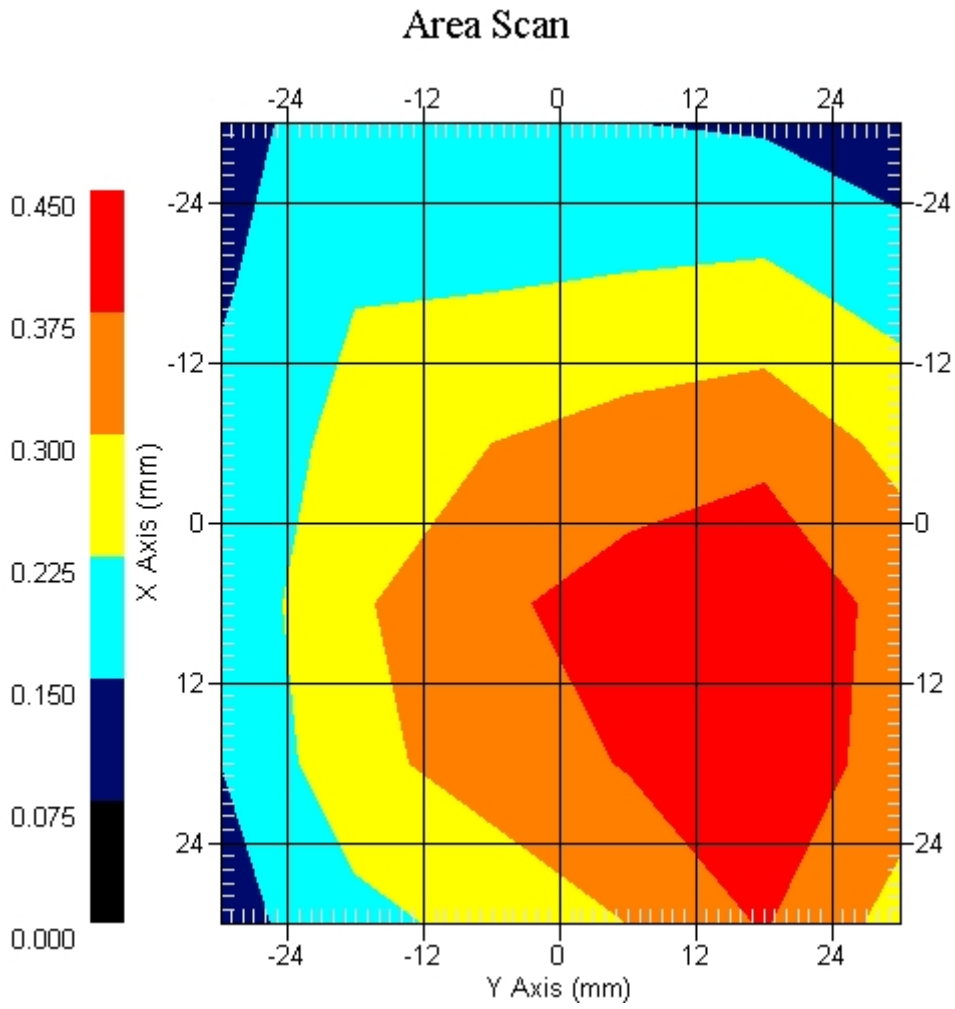
Crest Factor : 1
 Tissue Temp. : 21.30 °C
 Ambient Temp. : 22.10 °C
 Area Scan : 6x6x1 : Measurement x=12mm, y=12mm, z=4mm
 Zoom Scan : 5x5x8 : Measurement x=8mm, y=8mm, z=4mm
 Power Drift-Start : 0.200 W/kg
 Power Drift-Finish: 0.195 W/kg
 Power Drift (%) : -2.500

DUT Position : Touch
 Channel : 9400



1 gram SAR value : 0.413 W/kg
 10 gram SAR value : 0.263 W/kg
 Area Scan Peak SAR : 0.450 W/kg
 Zoom Scan Peak SAR : 0.720 W/kg

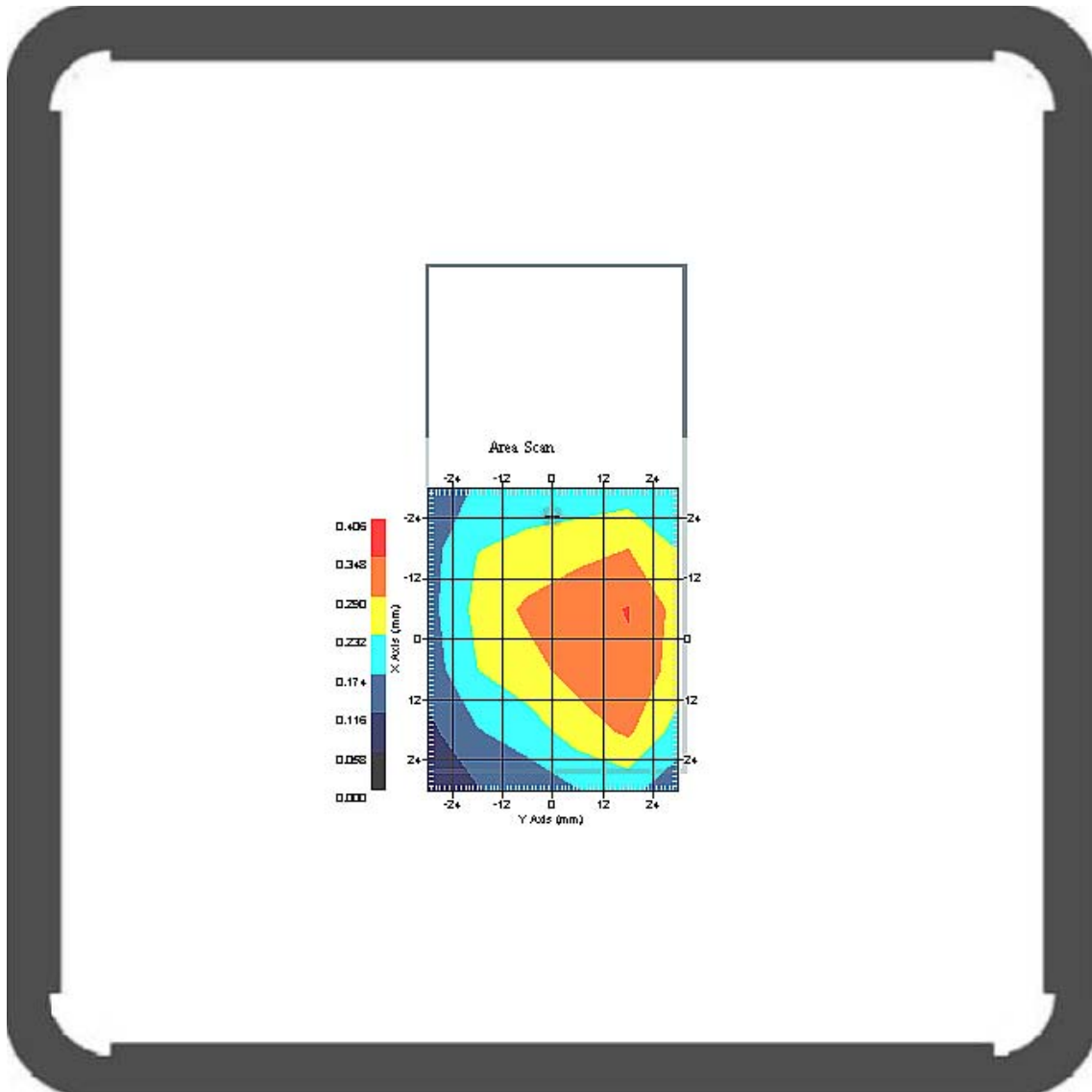
This is previous page plot (zoom in)



Measurement Data

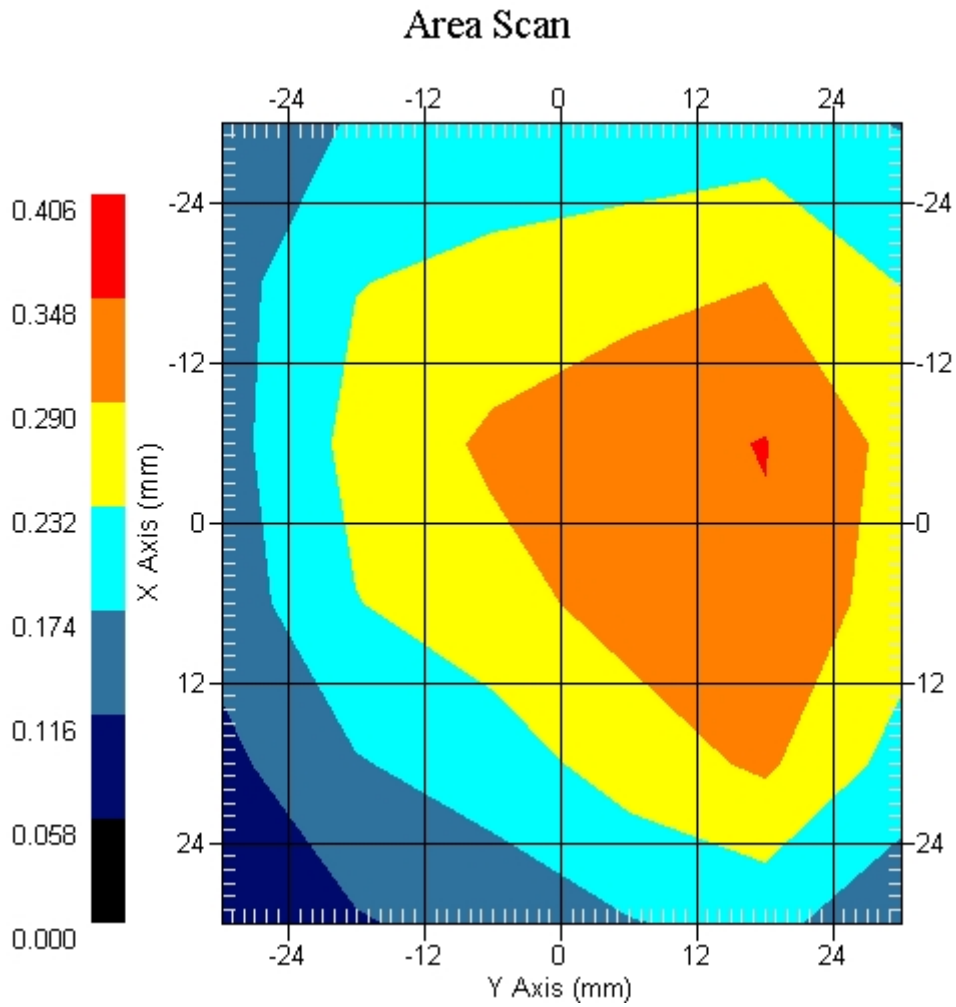
Crest Factor : 1
 Tissue Temp. : 21.30 °C
 Ambient Temp. : 22.10 °C
 Area Scan : 6x6x1 : Measurement x=12mm, y=12mm, z=4mm
 Zoom Scan : 5x5x8 : Measurement x=8mm, y=8mm, z=4mm
 Power Drift-Start : 0.156 W/kg
 Power Drift-Finish: 0.156 W/kg
 Power Drift (%) : -0.468

DUT Position : Touch
 Channel : 9538



1 gram SAR value : 0.353 W/kg
 10 gram SAR value : 0.183 W/kg
 Area Scan Peak SAR : 0.350 W/kg
 Zoom Scan Peak SAR : 0.630 W/kg

This is previous page plot (zoom in)



ALSAS-10U VER 2.3.6 APREL Laboratories
SAR Test Report-WCDMA Band II RMCReport Date : 04-Mar-2009
Measurement Date : 04-Mar-2009

Product Data

Device Name : Mobile Phone
Type : Std Form Cell Phone
Model : M900
Frequency : 1900.00 MHz
Max. Transmit Pwr : 1 W
Drift Time : 0 min(s)
Length : 119.2 mm
Width : 62.2 mm
Depth : 17.9 mm
Antenna Type : Internal

Phantom Data

Type : Uni-Phantom
Size (mm) : 280 x 280 x 200
Location : Center

Tissue Data

Type : BODY
Serial No. : 324-B
Frequency : 1900.00 MHz
Last Calib. Date : 04-Mar-2009
Temperature : 21.30 °C
Ambient Temp. : 22.10 °C
Humidity : 52.00 RH%
Epsilon : 53.67 F/m
Sigma : 1.54 S/m
Density : 1000.00 kg/cu. m

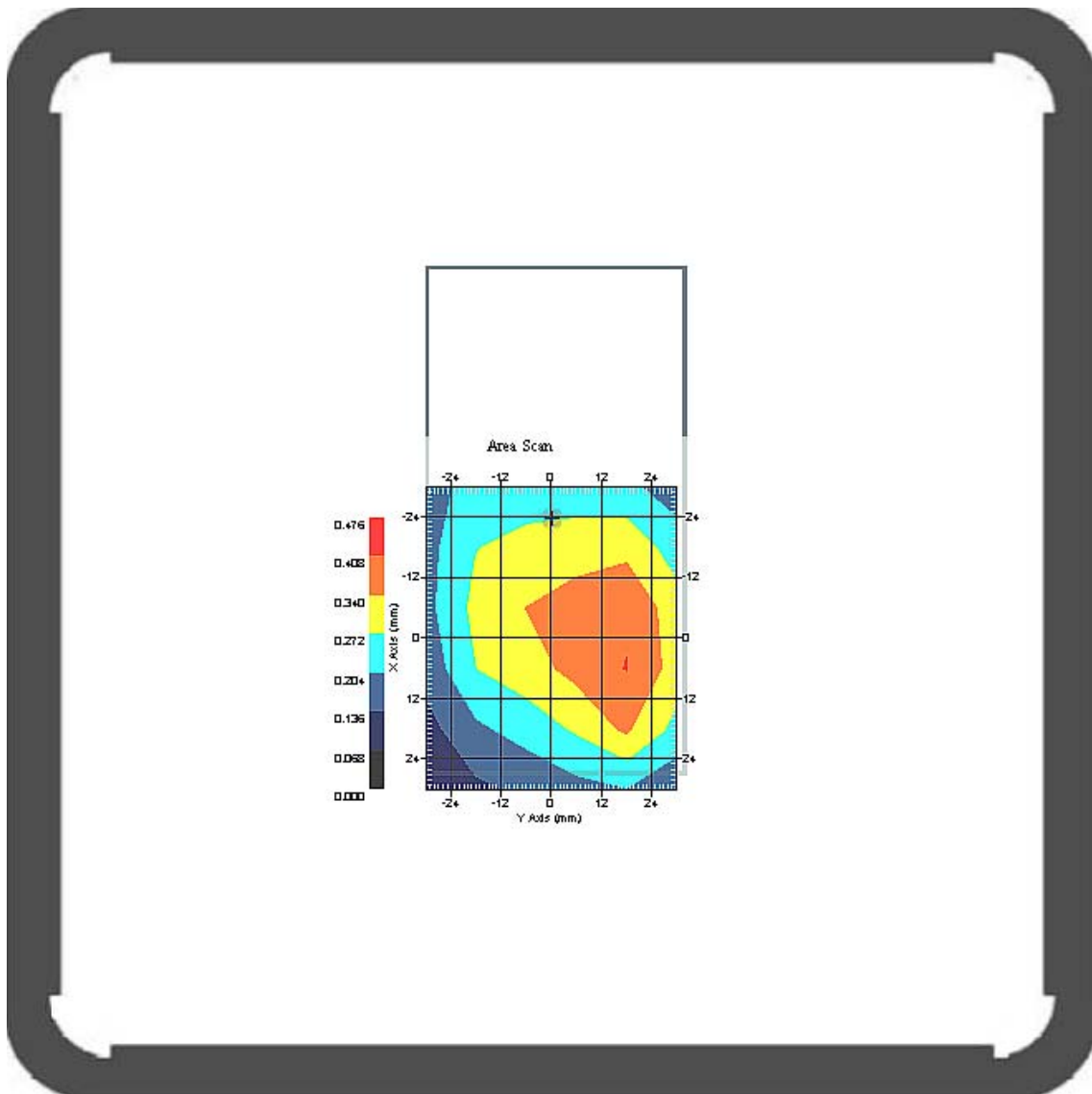
Probe Data

Name : Probe 265
Model : E020
Type : E-Field Triangle
Serial No. : 265
Last Calib. Date : 09-May-2008
Frequency : 1900.00 MHz
Duty Cycle Factor: 1
Conversion Factor: 5.1
Probe Sensitivity: 1.20 1.20 1.20 $\mu\text{V}/(\text{V}/\text{m})^2$
Compression Point: 95.00 mV
Offset : 1.56 mm

Measurement Data

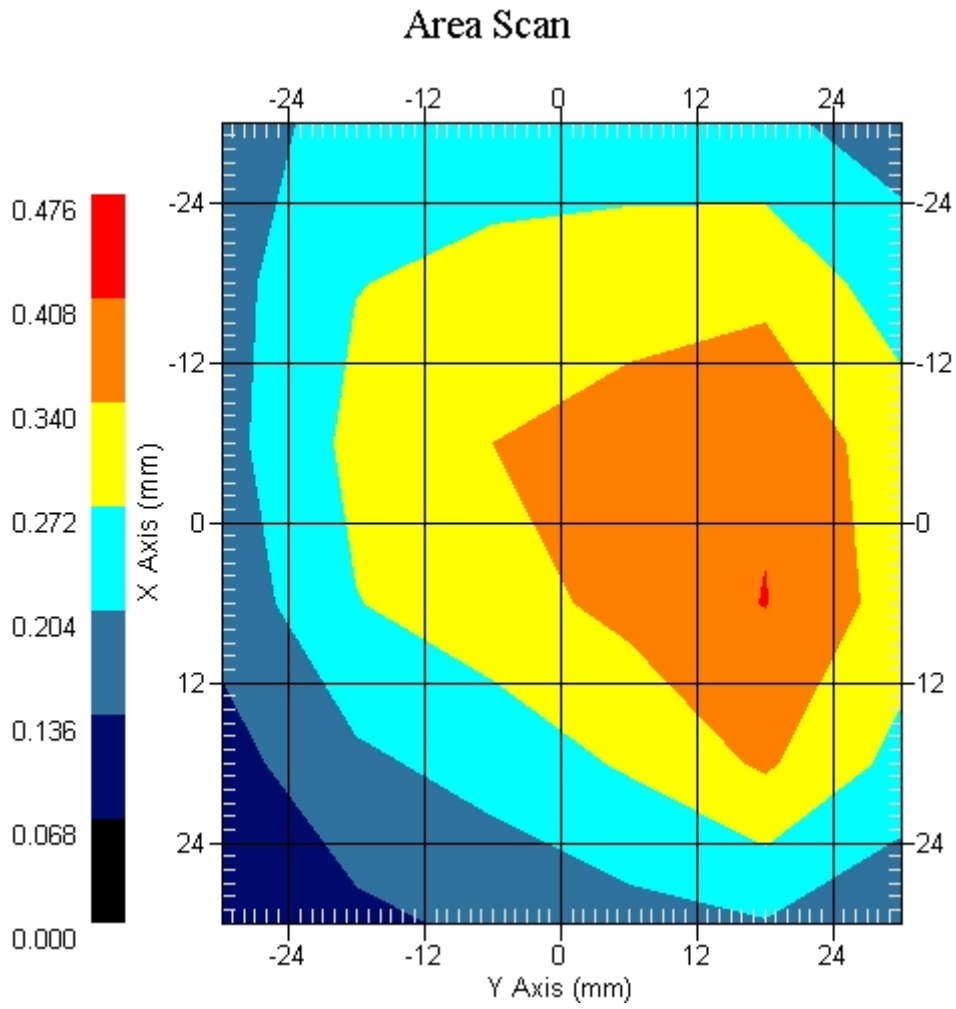
Crest Factor : 1
 Tissue Temp. : 21.30 °C
 Ambient Temp. : 22.10 °C
 Area Scan : 6x6x1 : Measurement x=12mm, y=12mm, z=4mm
 Zoom Scan : 5x5x8 : Measurement x=8mm, y=8mm, z=4mm
 Power Drift-Start : 0.213 W/kg
 Power Drift-Finish: 0.214 W/kg
 Power Drift (%) : 0.809

DUT Position : Touch
 Channel : 9262



1 gram SAR value : 0.376 W/kg
 10 gram SAR value : 0.231 W/kg
 Area Scan Peak SAR : 0.410 W/kg
 Zoom Scan Peak SAR : 0.650 W/kg

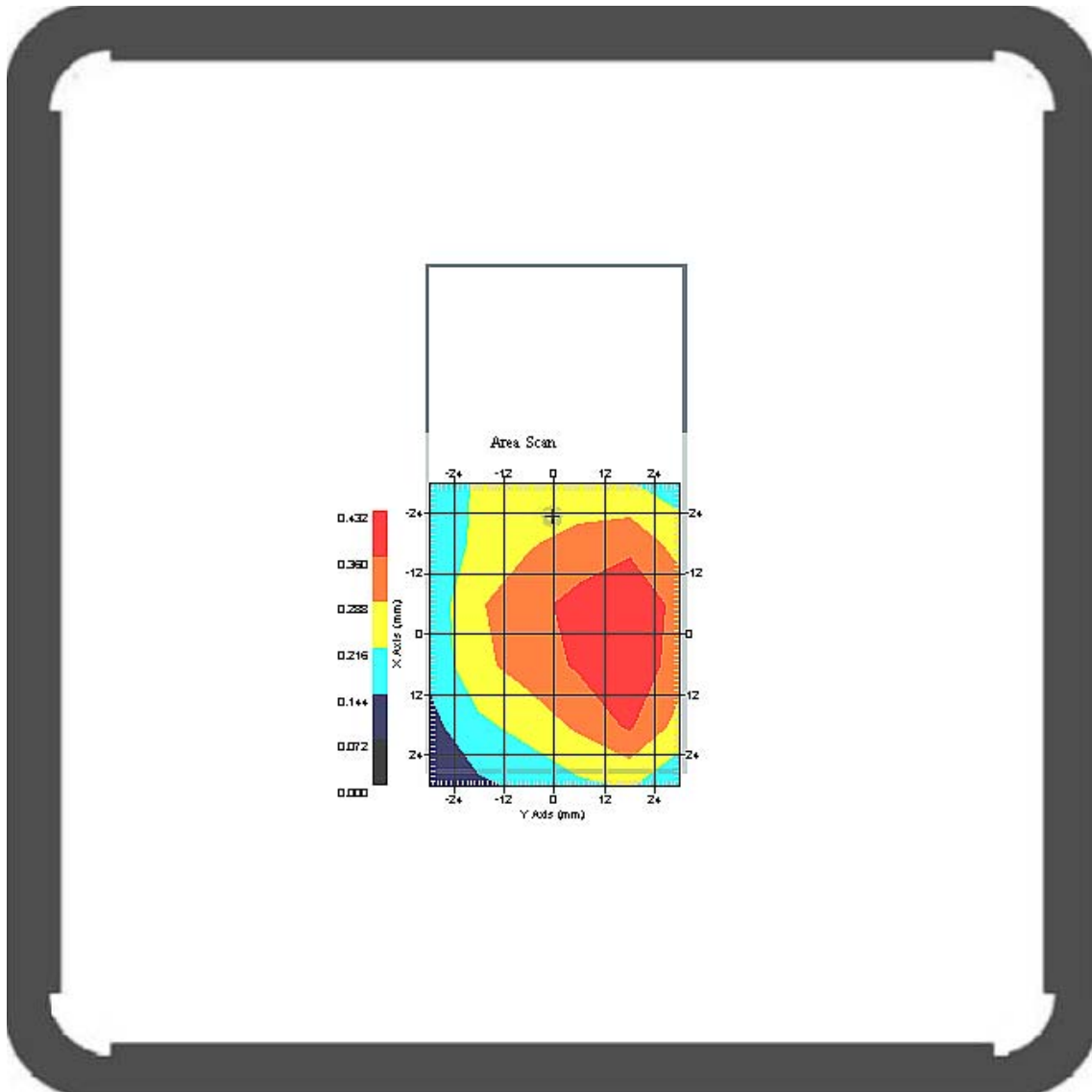
This is previous page plot (zoom in)



Measurement Data

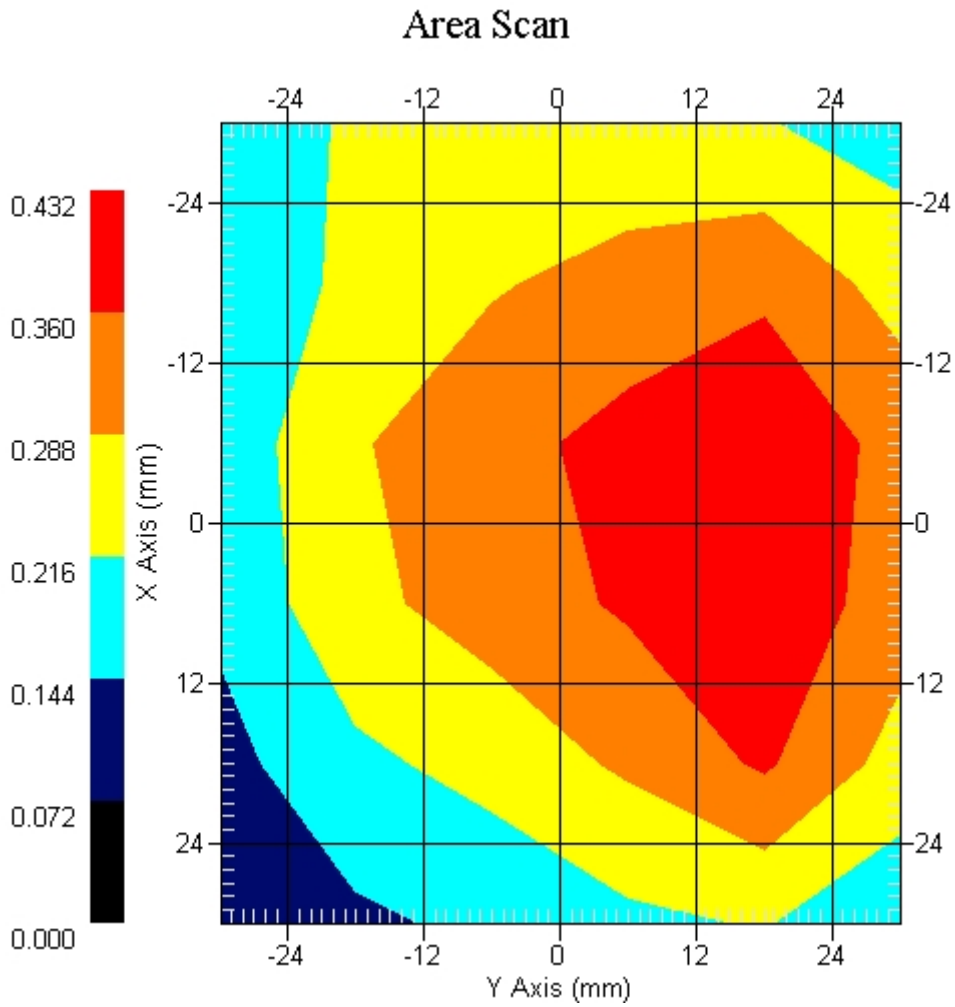
Crest Factor : 1
 Tissue Temp. : 21.30 °C
 Ambient Temp. : 22.10 °C
 Area Scan : 6x6x1 : Measurement x=12mm, y=12mm, z=4mm
 Zoom Scan : 5x5x8 : Measurement x=8mm, y=8mm, z=4mm
 Power Drift-Start : 0.186 W/kg
 Power Drift-Finish: 0.193 W/kg
 Power Drift (%) : 3.640

DUT Position : Touch
 Channel : 9400



1 gram SAR value : 0.389 W/kg
 10 gram SAR value : 0.241 W/kg
 Area Scan Peak SAR : 0.430 W/kg
 Zoom Scan Peak SAR : 0.670 W/kg

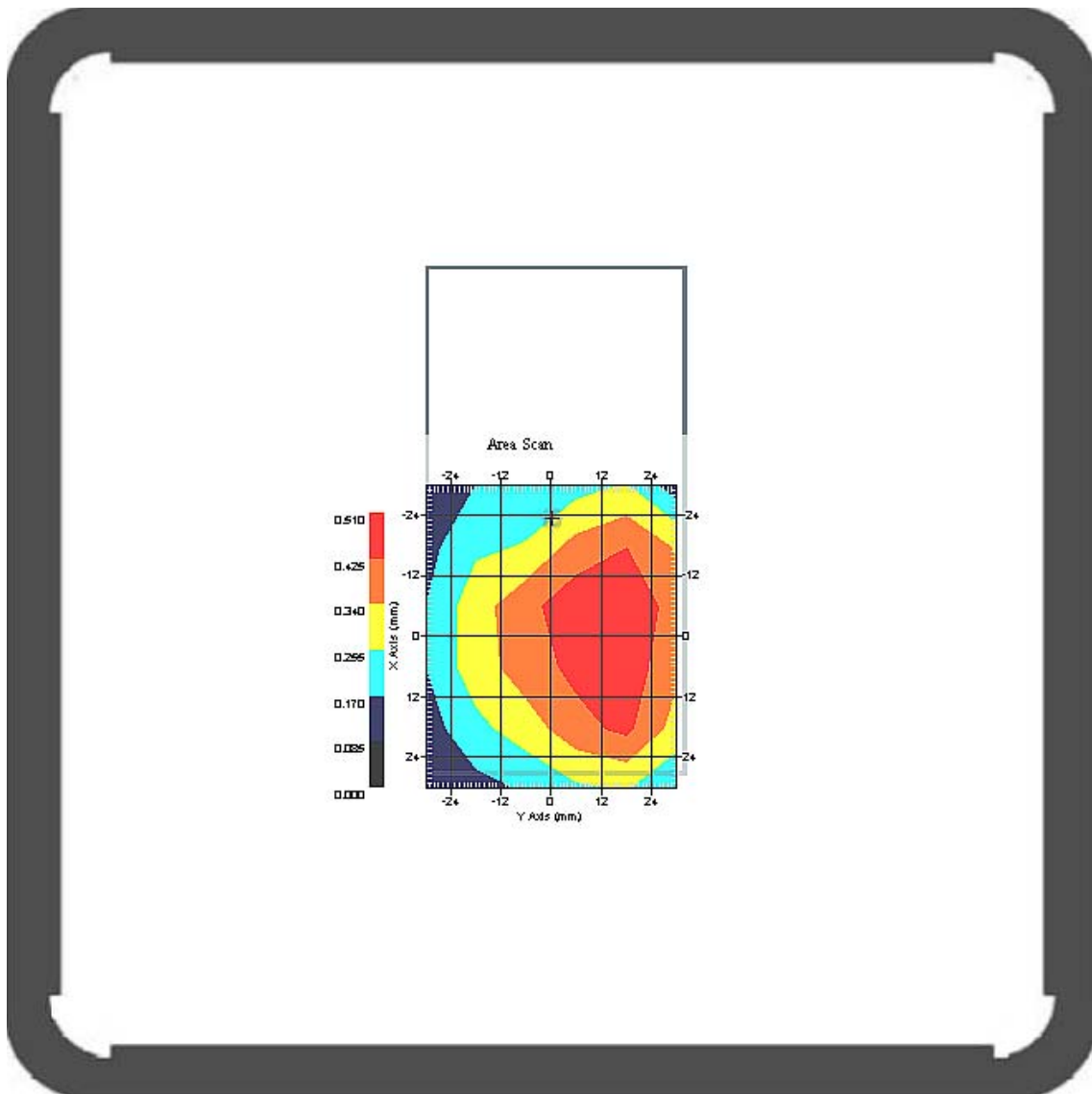
This is previous page plot (zoom in)



Measurement Data

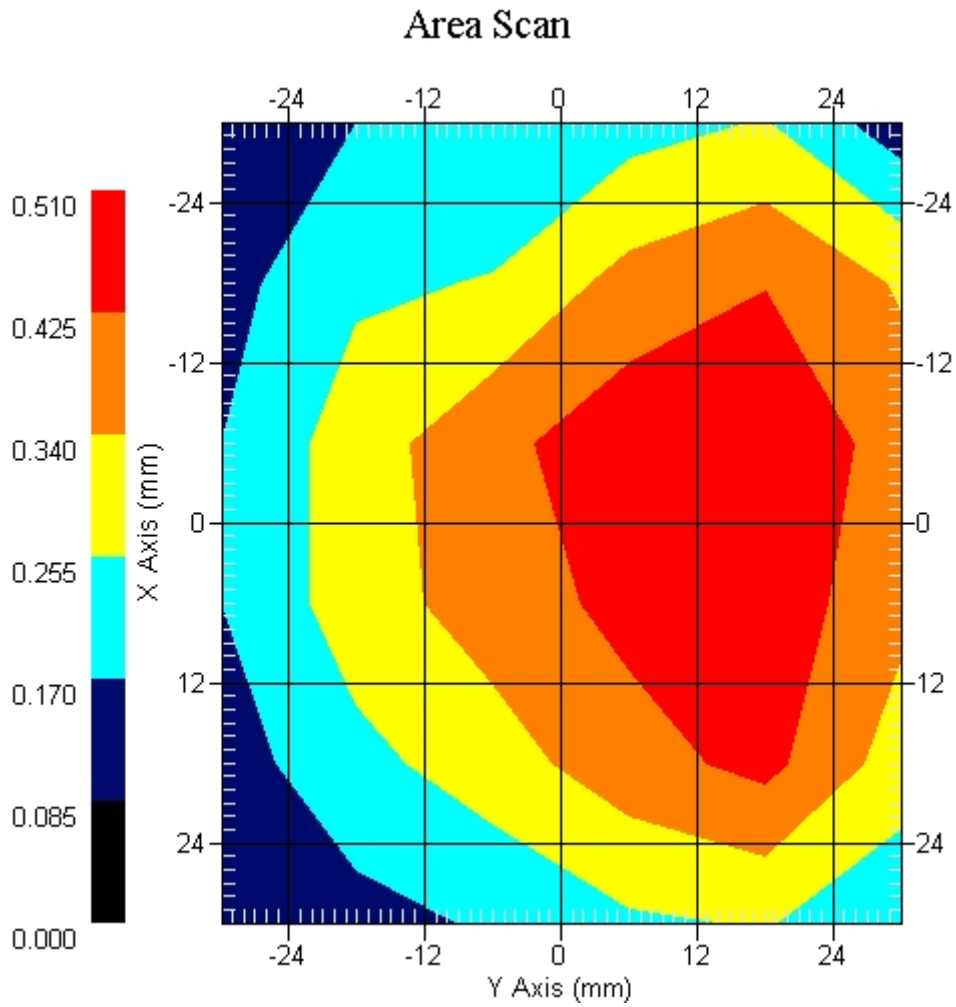
Crest Factor : 1
 Tissue Temp. : 21.30 °C
 Ambient Temp. : 22.10 °C
 Area Scan : 6x6x1 : Measurement x=12mm, y=12mm, z=4mm
 Zoom Scan : 5x5x8 : Measurement x=8mm, y=8mm, z=4mm
 Power Drift-Start : 0.162 W/kg
 Power Drift-Finish: 0.155 W/kg
 Power Drift (%) : -4.529

DUT Position : Touch
 Channel : 9538



1 gram SAR value : 0.467 W/kg
 10 gram SAR value : 0.311 W/kg
 Area Scan Peak SAR : 0.510 W/kg
 Zoom Scan Peak SAR : 0.820 W/kg

This is previous page plot (zoom in)



ALSAS-10U VER 2.3.6 APREL Laboratories
SAR Test Report-WCDMA Band II HSDPAReport Date : 04-Mar-2009
Measurement Date : 04-Mar-2009

Product Data

Device Name : Mobile Phone
Type : Std Form Cell Phone
Model : M900
Frequency : 1900.00 MHz
Max. Transmit Pwr : 1 W
Drift Time : 0 min(s)
Length : 119.2 mm
Width : 62.2 mm
Depth : 17.9 mm
Antenna Type : Internal

Phantom Data

Type : Uni-Phantom
Size (mm) : 280 x 280 x 200
Location : Center

Tissue Data

Type : BODY
Serial No. : 324-B
Frequency : 1900.00 MHz
Last Calib. Date : 04-Mar-2009
Temperature : 21.30 °C
Ambient Temp. : 22.10 °C
Humidity : 52.00 RH%
Epsilon : 53.67 F/m
Sigma : 1.54 S/m
Density : 1000.00 kg/cu. m

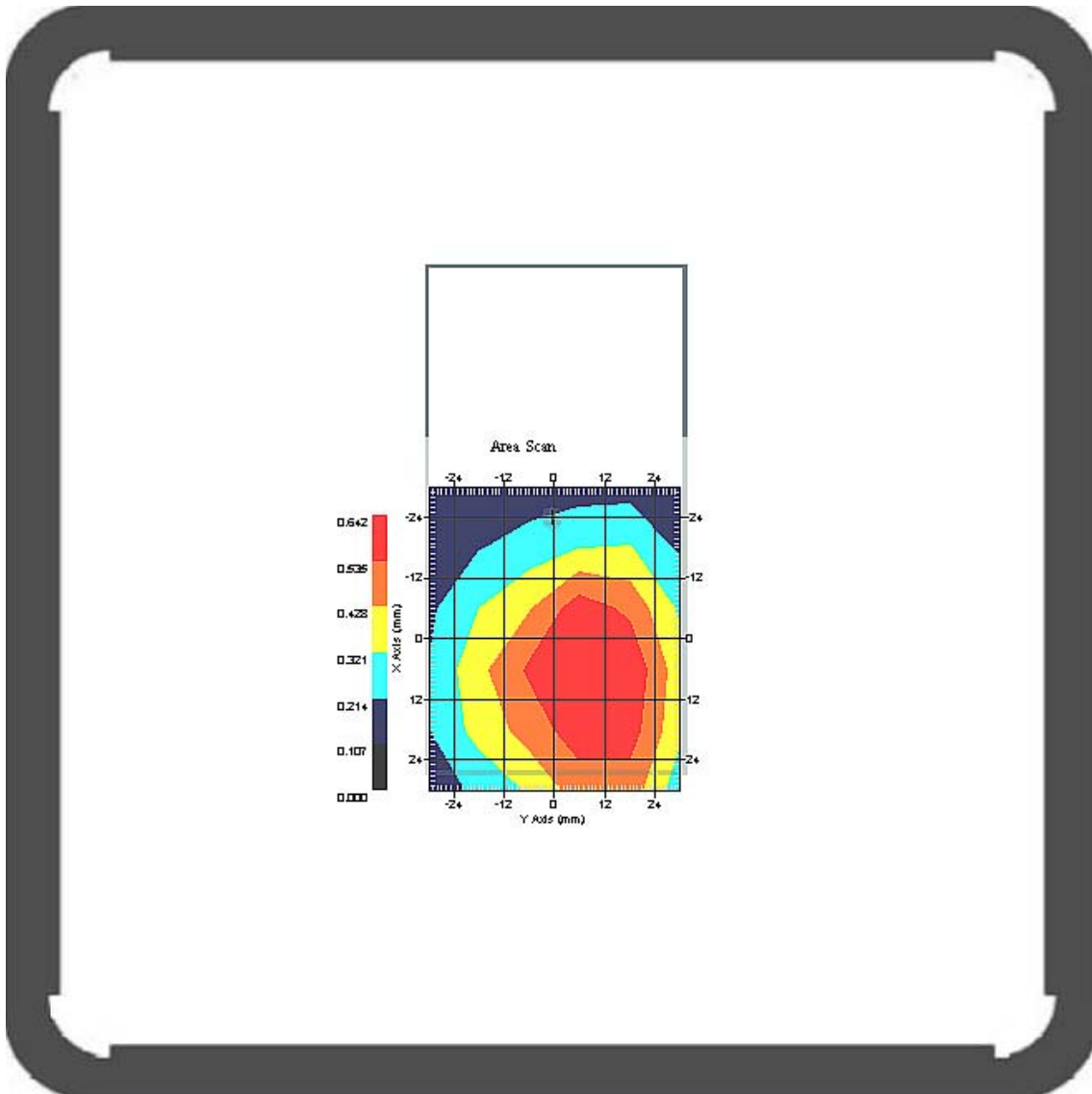
Probe Data

Name : Probe 265
Model : E020
Type : E-Field Triangle
Serial No. : 265
Last Calib. Date : 09-May-2008
Frequency : 1900.00 MHz
Duty Cycle Factor: 1
Conversion Factor: 5.1
Probe Sensitivity: 1.20 1.20 1.20 $\mu\text{V}/(\text{V}/\text{m})^2$
Compression Point: 95.00 mV
Offset : 1.56 mm

Measurement Data

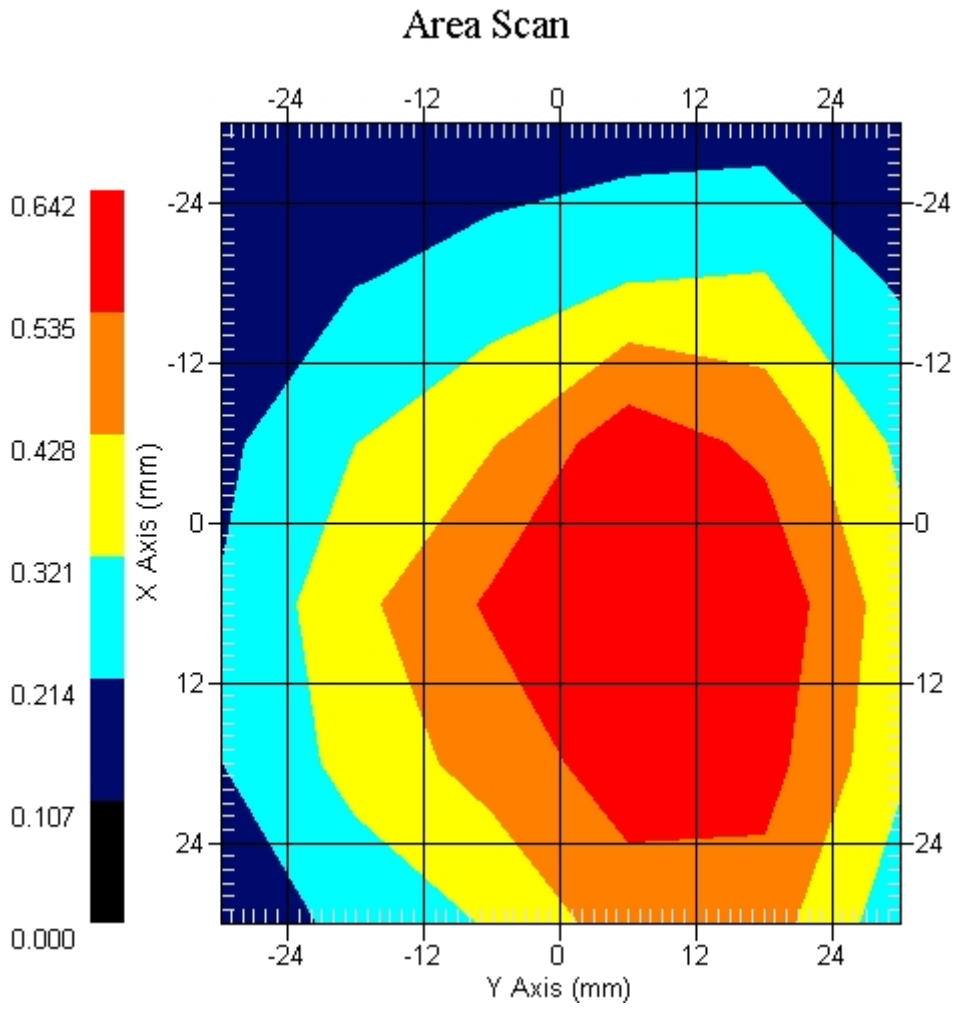
Crest Factor : 1
 Tissue Temp. : 21.30 °C
 Ambient Temp. : 22.10 °C
 Area Scan : 6x6x1 : Measurement x=12mm, y=12mm, z=4mm
 Zoom Scan : 5x5x8 : Measurement x=8mm, y=8mm, z=4mm
 Power Drift-Start : 0.219 W/kg
 Power Drift-Finish: 0.225 W/kg
 Power Drift (%) : 2.721

DUT Position : Touch
 Channel : 9538



1 gram SAR value : 0.583 W/kg
 10 gram SAR value : 0.428 W/kg
 Area Scan Peak SAR : 0.640 W/kg
 Zoom Scan Peak SAR : 0.970 W/kg

This is previous page plot (zoom in)



ALSAS-10U VER 2.3.6 APREL Laboratories
SAR Test Report-WCDMA Band II HSUPA

Report Date : 04-Mar-2009
Measurement Date : 04-Mar-2009

Product Data

Device Name : Mobile Phone
Type : Std Form Cell Phone
Model : M900
Frequency : 1900.00 MHz
Max. Transmit Pwr : 1 W
Drift Time : 0 min(s)
Length : 119.2 mm
Width : 62.2 mm
Depth : 17.9 mm
Antenna Type : Internal

Phantom Data

Type : Uni-Phantom
Size (mm) : 280 x 280 x 200
Location : Center

Tissue Data

Type : BODY
Serial No. : 324-B
Frequency : 1900.00 MHz
Last Calib. Date : 04-Mar-2009
Temperature : 21.30 °C
Ambient Temp. : 22.10 °C
Humidity : 52.00 RH%
Epsilon : 53.67 F/m
Sigma : 1.54 S/m
Density : 1000.00 kg/cu. m

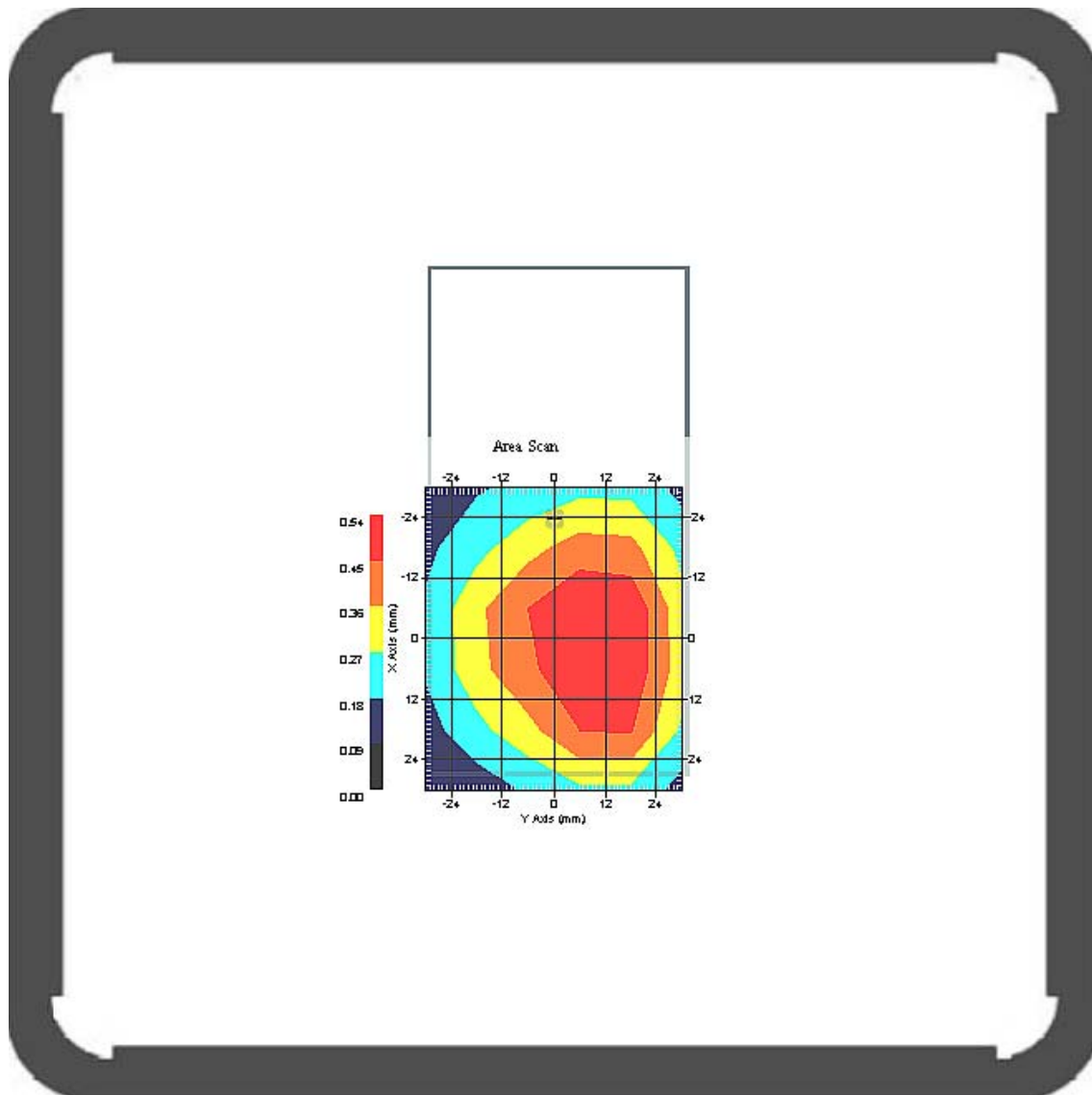
Probe Data

Name : Probe 265
Model : E020
Type : E-Field Triangle
Serial No. : 265
Last Calib. Date : 09-May-2008
Frequency : 1900.00 MHz
Duty Cycle Factor: 1
Conversion Factor: 5.1
Probe Sensitivity: 1.20 1.20 1.20 $\mu\text{V}/(\text{V}/\text{m})^2$
Compression Point: 95.00 mV
Offset : 1.56 mm

Measurement Data

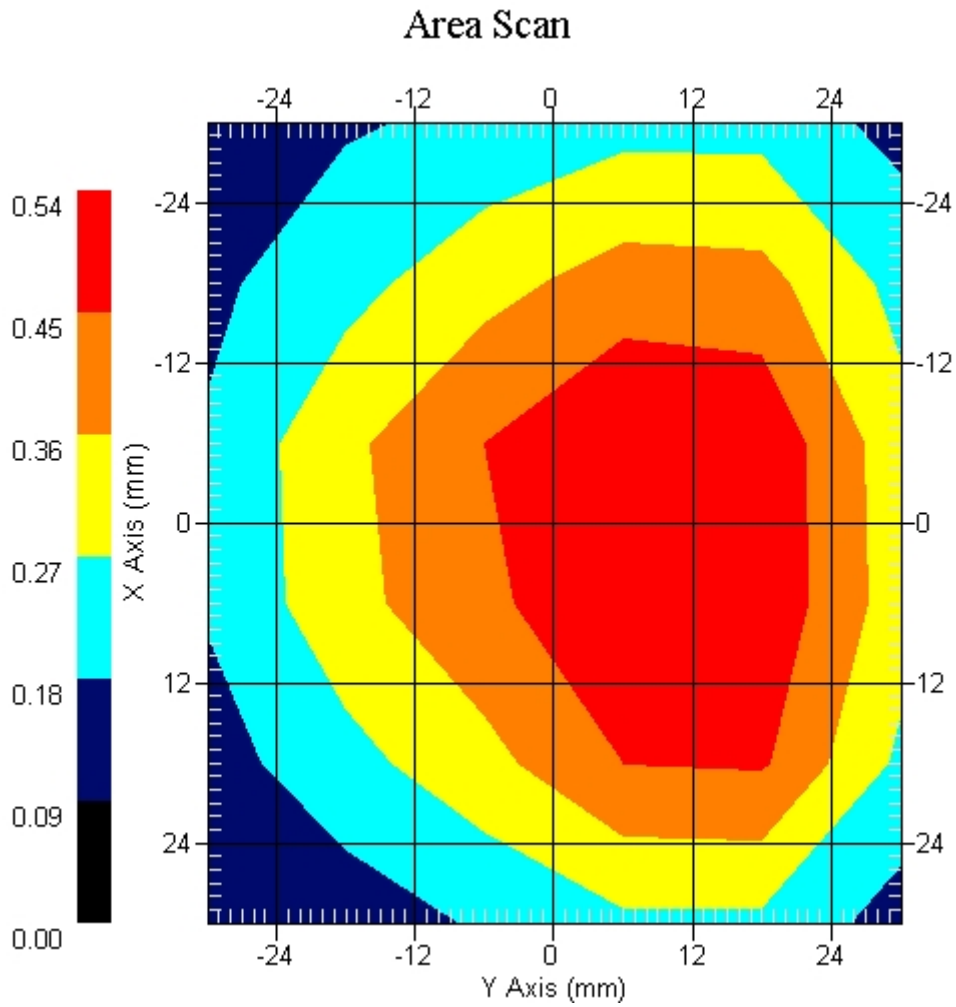
Crest Factor : 1
 Tissue Temp. : 21.30 °C
 Ambient Temp. : 22.10 °C
 Area Scan : 6x6x1 : Measurement x=12mm, y=12mm, z=4mm
 Zoom Scan : 5x5x8 : Measurement x=8mm, y=8mm, z=4mm
 Power Drift-Start : 0.169 W/kg
 Power Drift-Finish: 0.176 W/kg
 Power Drift (%) : 4.537

DUT Position : Touch
 Channel : 9538



1 gram SAR value : 0.479 W/kg
 10 gram SAR value : 0.348 W/kg
 Area Scan Peak SAR : 0.540 W/kg
 Zoom Scan Peak SAR : 0.860 W/kg

This is previous page plot (zoom in)



WCDMA Band II HSDPA EUT Body-worn, Z-Axis plot
Channel: 9538

SAR-Z Axis
at Hotspot x:28.01 y:-1.99

