

ALSAS-10U VER 2.3.6 APREL Laboratories
SAR Test Report-PCS 1900

Report Date : 02-Mar-2009
Measurement Date : 02-Mar-2009

Product Data

Device Name : Mobile Phone
Type : Std Form Cell Phone
Model : M900
Frequency : 1900.00 MHz
Max. Transmit Pwr : 1 W
Drift Time : 0 min(s)
Length : 119.2 mm
Width : 62.2 mm
Depth : 17.9 mm
Antenna Type : Internal

Phantom Data

Type : Uni-Phantom
Size (mm) : 280 x 280 x 200
Location : Center

Tissue Data

Type : BODY
Serial No. : 324-B
Frequency : 1900.00 MHz
Last Calib. Date : 02-Mar-2009
Temperature : 21.20 °C
Ambient Temp. : 22.00 °C
Humidity : 51.00 RH%
Epsilon : 54.27 F/m
Sigma : 1.56 S/m
Density : 1000.00 kg/cu. m

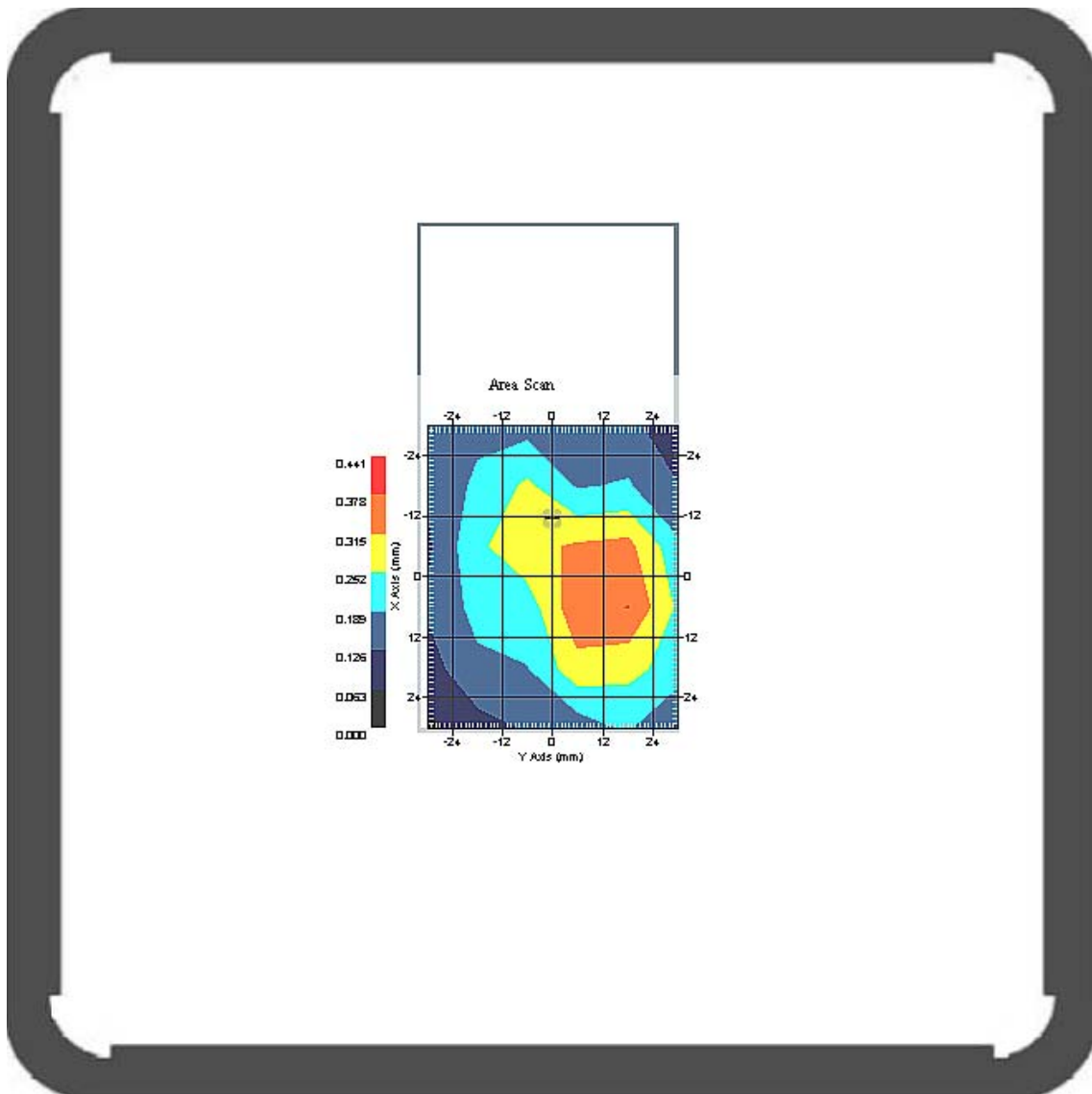
Probe Data

Name : Probe 265
Model : E020
Type : E-Field Triangle
Serial No. : 265
Last Calib. Date : 09-May-2008
Frequency : 1900.00 MHz
Duty Cycle Factor: 8
Conversion Factor: 5.1
Probe Sensitivity: 1.20 1.20 1.20 $\mu\text{V}/(\text{V}/\text{m})^2$
Compression Point: 95.00 mV
Offset : 1.56 mm

Measurement Data

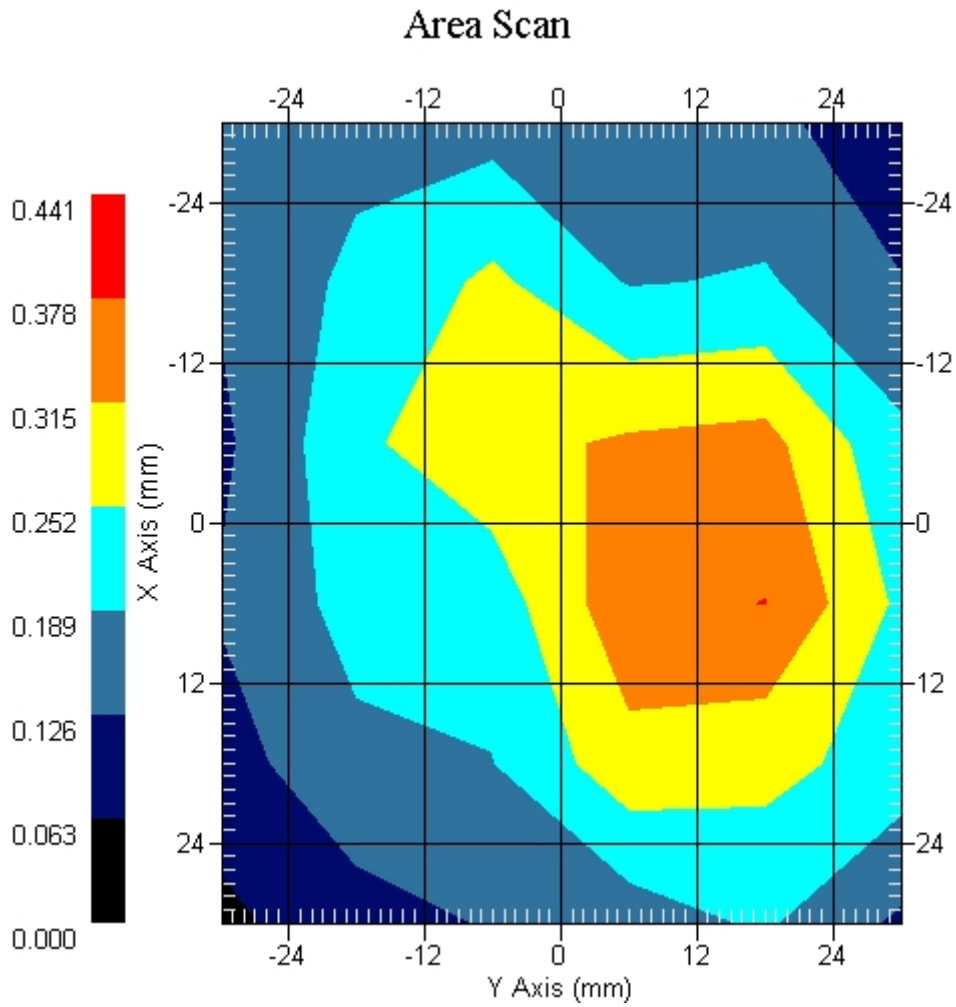
Crest Factor : 8
 Tissue Temp. : 21.20 °C
 Ambient Temp. : 22.00 °C
 Area Scan : 6x6x1 : Measurement x=12mm, y=12mm, z=4mm
 Zoom Scan : 5x5x8 : Measurement x=8mm, y=8mm, z=4mm
 Power Drift-Start : 0.207 W/kg
 Power Drift-Finish: 0.200 W/kg
 Power Drift (%) : -3.381

DUT Position : Touch
 Channel : 512



1 gram SAR value : 0.340 W/kg
 10 gram SAR value : 0.200 W/kg
 Area Scan Peak SAR : 0.379 W/kg
 Zoom Scan Peak SAR : 0.690 W/kg

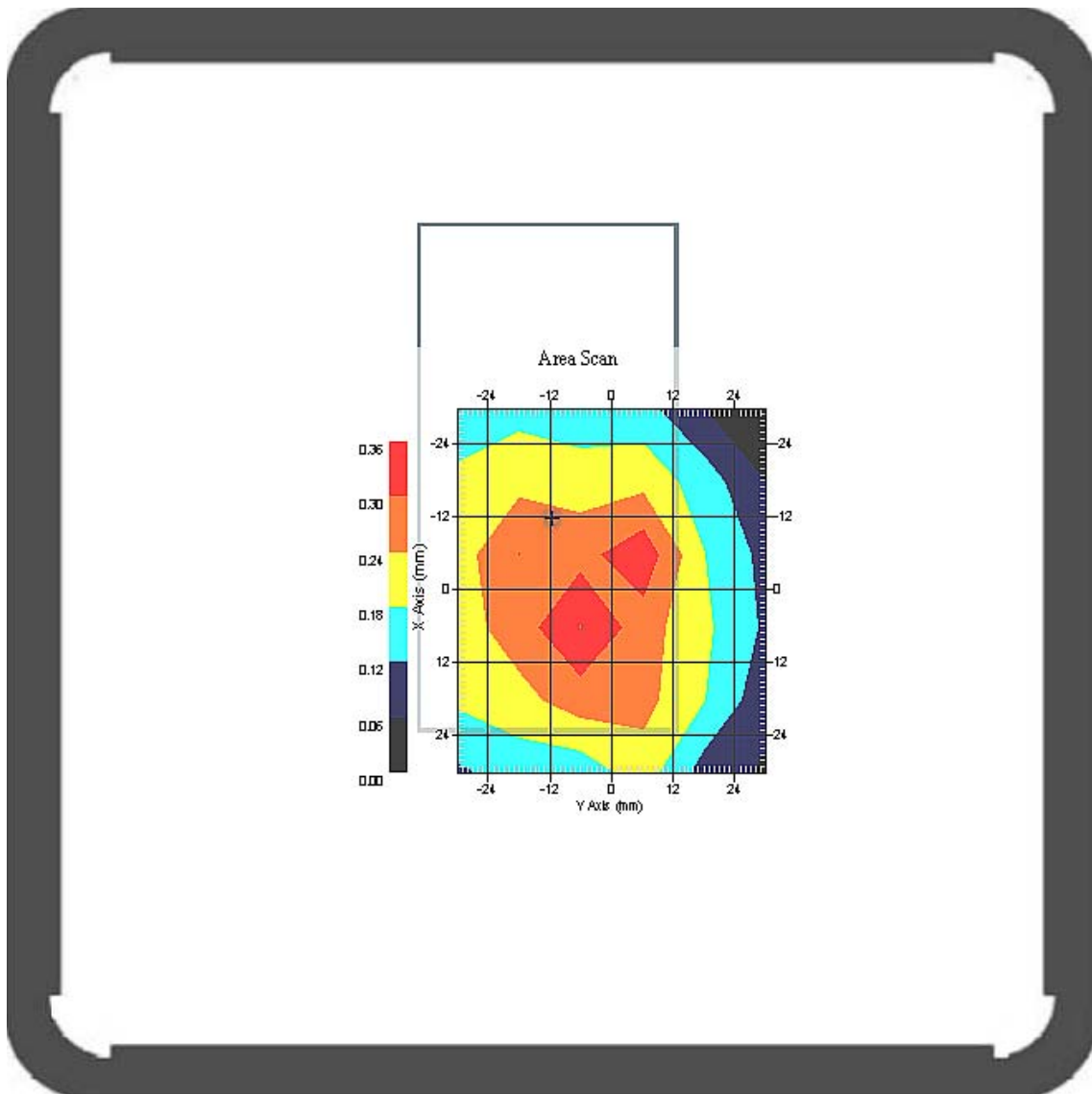
This is previous page plot (zoom in)



Measurement Data

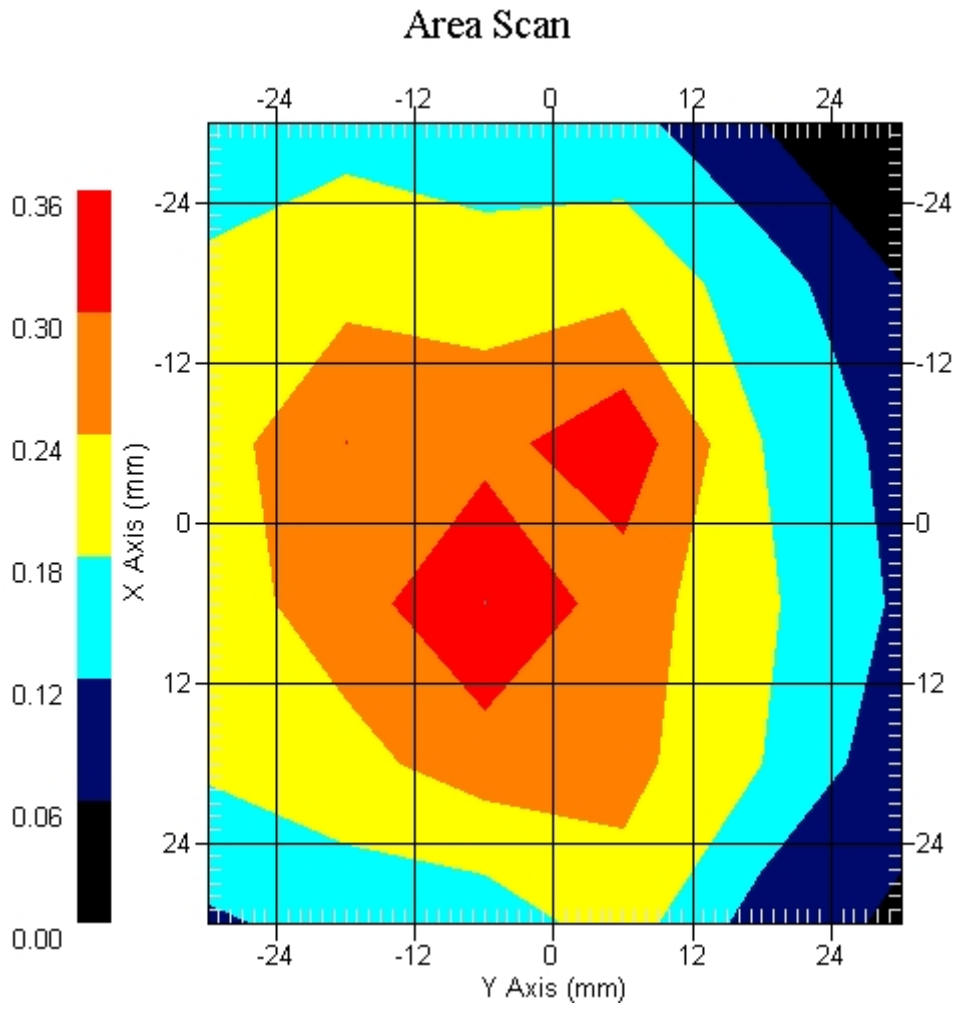
Crest Factor : 8
 Tissue Temp. : 21.20 °C
 Ambient Temp. : 22.00 °C
 Area Scan : 6x6x1 : Measurement x=12mm, y=12mm, z=4mm
 Zoom Scan : 5x5x8 : Measurement x=8mm, y=8mm, z=4mm
 Power Drift-Start : 0.201 W/kg
 Power Drift-Finish: 0.196 W/kg
 Power Drift (%) : -2.487

DUT Position : Touch
 Channel : 661



1 gram SAR value : 0.263 W/kg
 10 gram SAR value : 0.154 W/kg
 Area Scan Peak SAR : 0.332 W/kg
 Zoom Scan Peak SAR : 0.580 W/kg

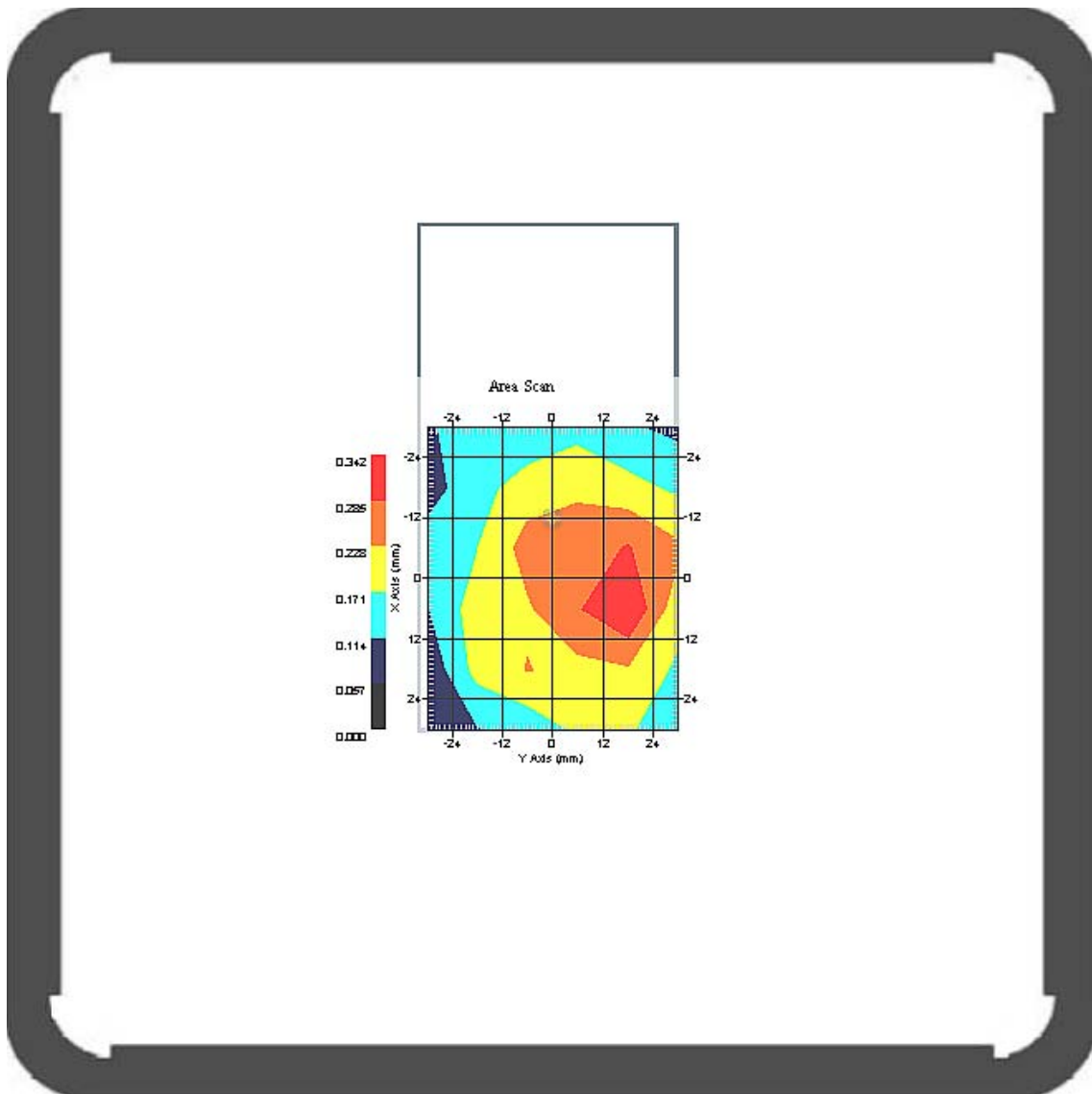
This is previous page plot (zoom in)



Measurement Data

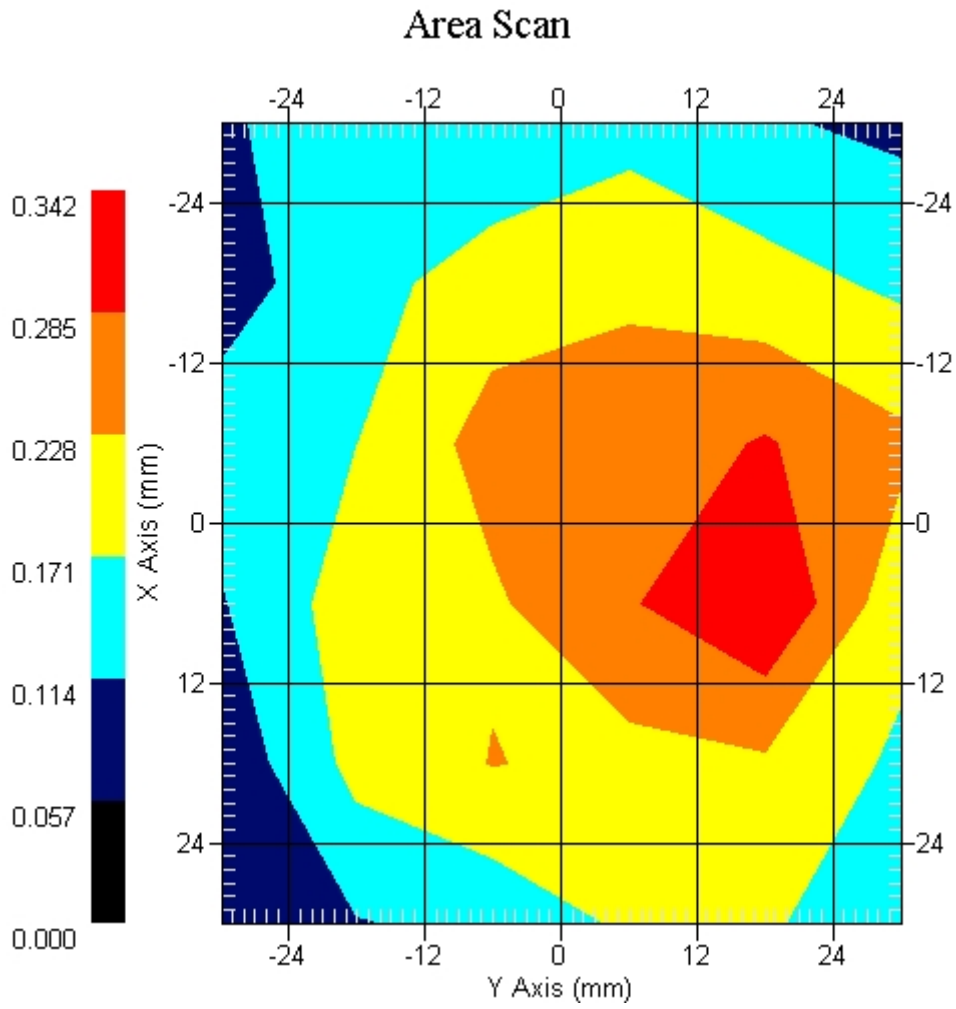
Crest Factor : 8
 Tissue Temp. : 21.20 °C
 Ambient Temp. : 22.00 °C
 Area Scan : 6x6x1 : Measurement x=12mm, y=12mm, z=4mm
 Zoom Scan : 5x5x8 : Measurement x=8mm, y=8mm, z=4mm
 Power Drift-Start : 0.172 W/kg
 Power Drift-Finish: 0.168 W/kg
 Power Drift (%) : -2.325

DUT Position : Touch
 Channel : 810



1 gram SAR value : 0.303 W/kg
 10 gram SAR value : 0.172 W/kg
 Area Scan Peak SAR : 0.340 W/kg
 Zoom Scan Peak SAR : 0.630 W/kg

This is previous page plot (zoom in)



ALSAS-10U VER 2.3.6 APREL Laboratories
SAR Test Report-PCS 1900 GPRS 2 Slot

Report Date : 02-Mar-2009
Measurement Date : 02-Mar-2009

Product Data

Device Name : Mobile Phone
Type : Std Form Cell Phone
Model : M900
Frequency : 1900.00 MHz
Max. Transmit Pwr : 1 W
Drift Time : 0 min(s)
Length : 119.2 mm
Width : 62.2 mm
Depth : 17.9 mm
Antenna Type : Internal

Phantom Data

Type : Uni-Phantom
Size (mm) : 280 x 280 x 200
Location : Center

Tissue Data

Type : BODY
Serial No. : 324-B
Frequency : 1900.00 MHz
Last Calib. Date : 02-Mar-2009
Temperature : 21.20 °C
Ambient Temp. : 22.00 °C
Humidity : 51.00 RH%
Epsilon : 54.27 F/m
Sigma : 1.56 S/m
Density : 1000.00 kg/cu. m

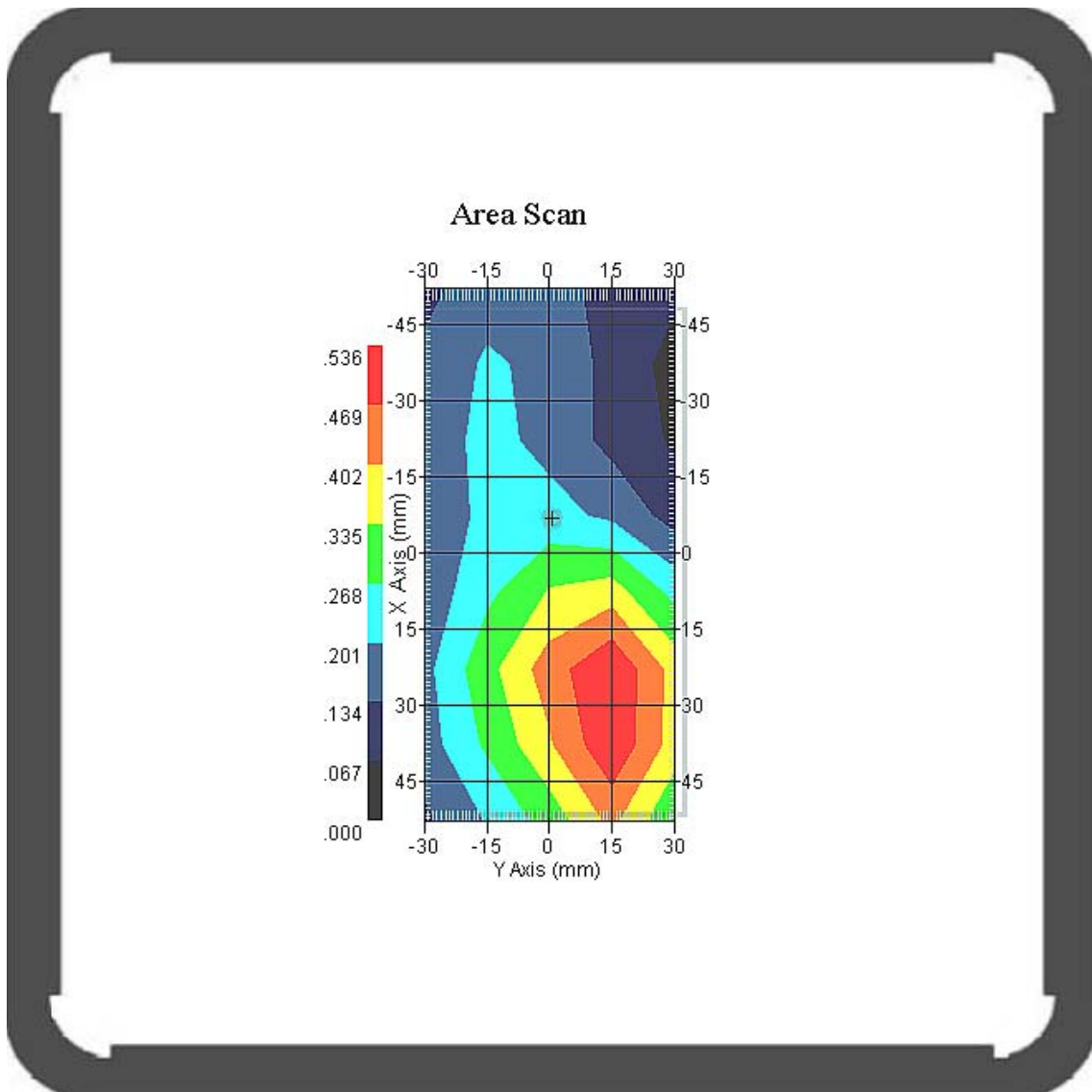
Probe Data

Name : Probe 265
Model : E020
Type : E-Field Triangle
Serial No. : 265
Last Calib. Date : 09-May-2008
Frequency : 1900.00 MHz
Duty Cycle Factor: 4
Conversion Factor: 5.1
Probe Sensitivity: 1.20 1.20 1.20 $\mu\text{V}/(\text{V}/\text{m})^2$
Compression Point: 95.00 mV
Offset : 1.56 mm

Measurement Data

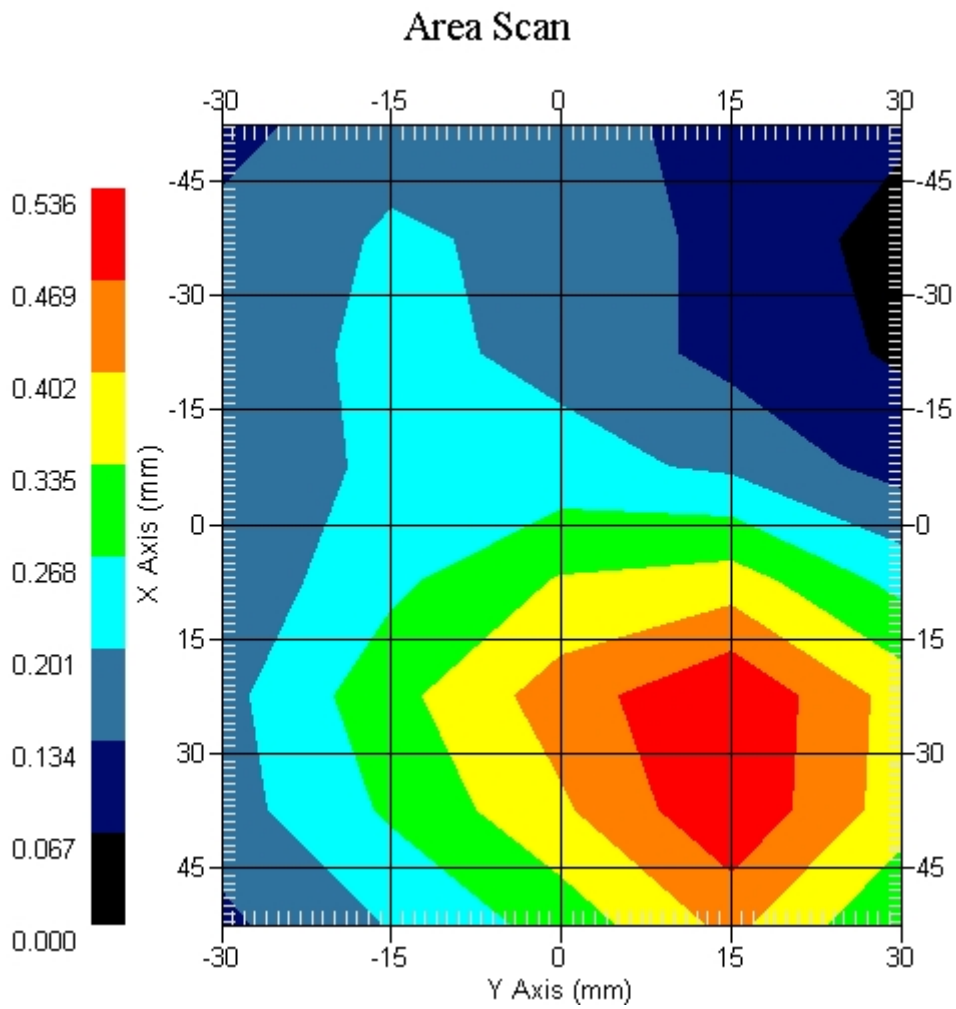
Crest Factor : 4
 Tissue Temp. : 21.30 °C
 Ambient Temp. : 22.10 °C
 Area Scan : 6x6x1 : Measurement x=12mm, y=12mm, z=4mm
 Zoom Scan : 5x5x8 : Measurement x=8mm, y=8mm, z=4mm
 Power Drift-Start : 0.193 W/kg
 Power Drift-Finish: 0.200 W/kg
 Power Drift (%) : 3.512

DUT Position : Touch
 Channel : 661



1 gram SAR value : 0.525 W/kg
 10 gram SAR value : 0.332 W/kg
 Area Scan Peak SAR : 0.533 W/kg
 Zoom Scan Peak SAR : 0.800 W/kg

This is previous page plot (zoom in)



ALSAS-10U VER 2.3.6 APREL Laboratories
SAR Test Report-PCS 1900 GPRS 3 Slot

Report Date : 02-Mar-2009
Measurement Date : 02-Mar-2009

Product Data

Device Name : Mobile Phone
Type : Std Form Cell Phone
Model : M900
Frequency : 1900.00 MHz
Max. Transmit Pwr : 1 W
Drift Time : 0 min(s)
Length : 119.2 mm
Width : 62.2 mm
Depth : 17.9 mm
Antenna Type : Internal

Phantom Data

Type : Uni-Phantom
Size (mm) : 280 x 280 x 200
Location : Center

Tissue Data

Type : BODY
Serial No. : 324-B
Frequency : 1900.00 MHz
Last Calib. Date : 02-Mar-2009
Temperature : 21.20 °C
Ambient Temp. : 22.00 °C
Humidity : 51.00 RH%
Epsilon : 54.27 F/m
Sigma : 1.56 S/m
Density : 1000.00 kg/cu. m

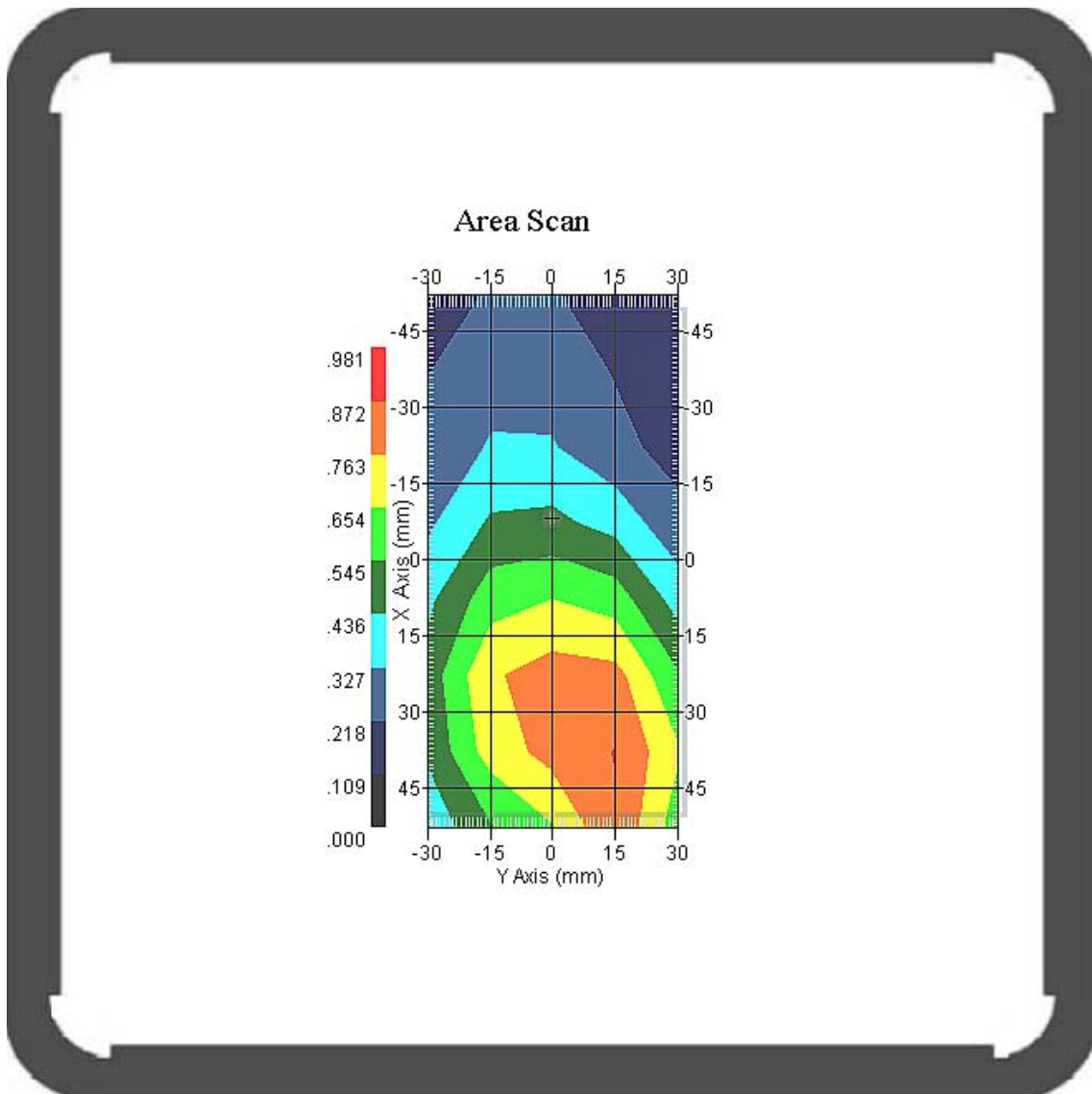
Probe Data

Name : Probe 265
Model : E020
Type : E-Field Triangle
Serial No. : 265
Last Calib. Date : 09-May-2008
Frequency : 1900.00 MHz
Duty Cycle Factor: 2.66
Conversion Factor: 5.1
Probe Sensitivity: 1.20 1.20 1.20 $\mu\text{V}/(\text{V}/\text{m})^2$
Compression Point: 95.00 mV
Offset : 1.56 mm

Measurement Data

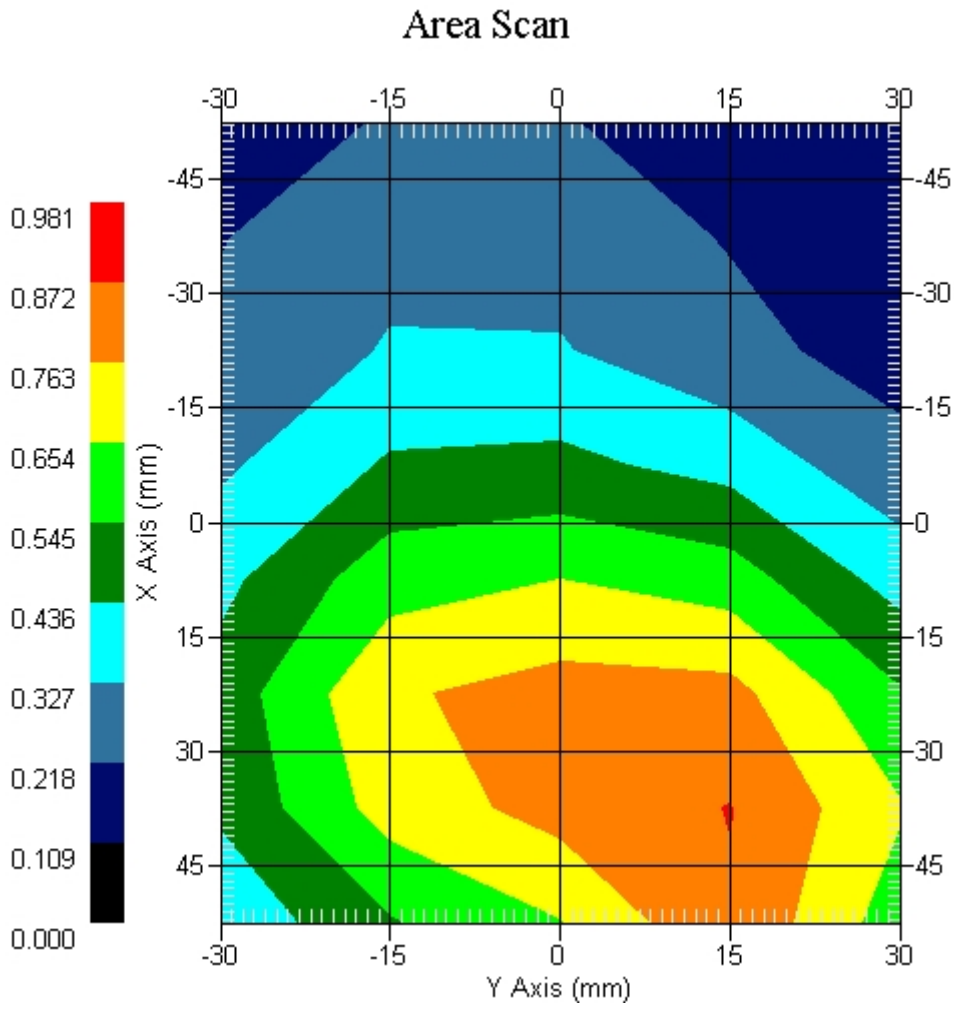
Crest Factor : 2.66
 Tissue Temp. : 21.30 °C
 Ambient Temp. : 22.10 °C
 Area Scan : 6x6x1 : Measurement x=12mm, y=12mm, z=4mm
 Zoom Scan : 5x5x8 : Measurement x=8mm, y=8mm, z=4mm
 Power Drift-Start : 0.389 W/kg
 Power Drift-Finish: 0.391 W/kg
 Power Drift (%) : 0.387

DUT Position : Touch
 Channel : 512



1 gram SAR value : 0.869 W/kg
 10 gram SAR value : 0.561 W/kg
 Area Scan Peak SAR : 0.875 W/kg
 Zoom Scan Peak SAR : 1.281 W/kg

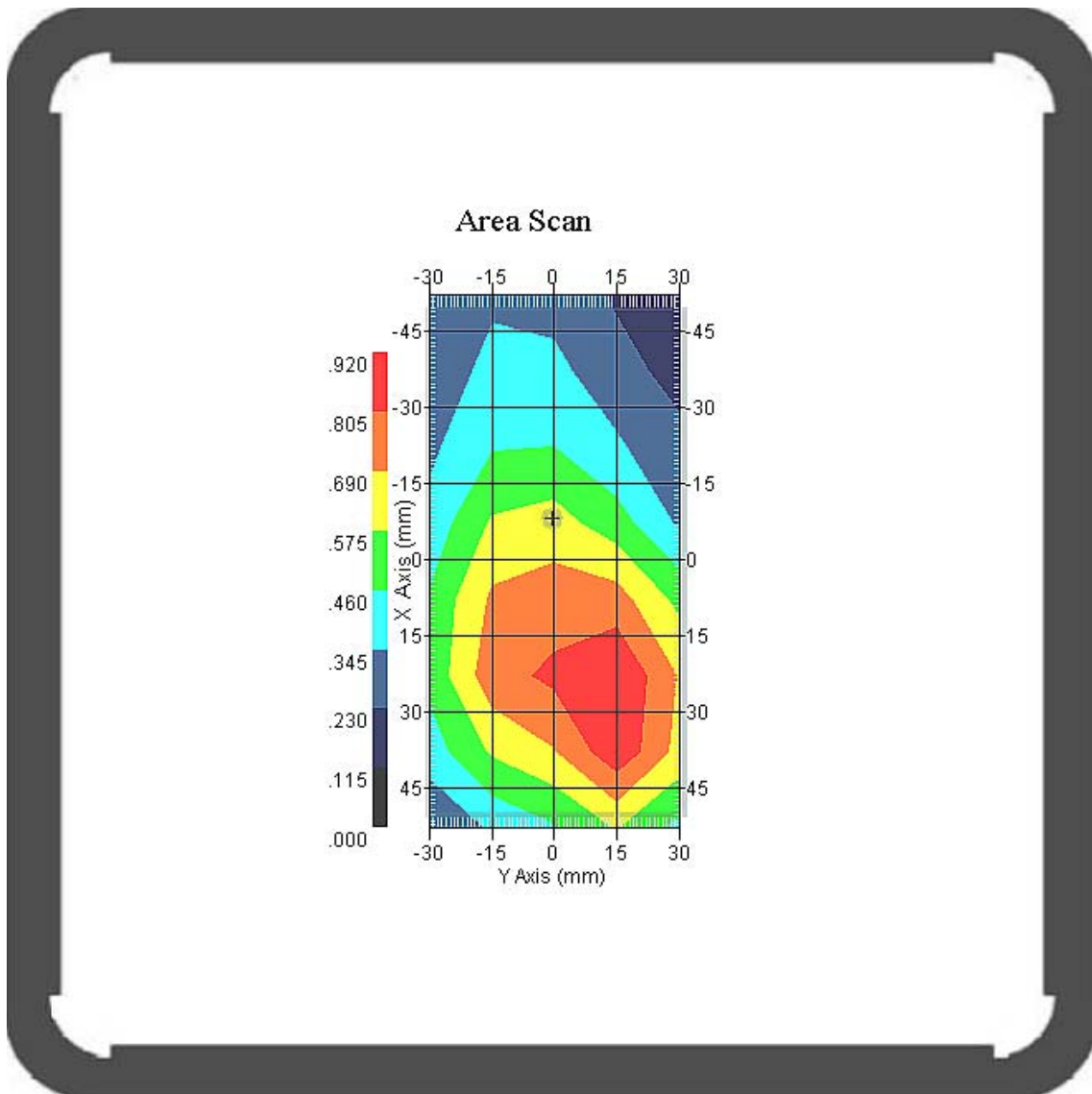
This is previous page plot (zoom in)



Measurement Data

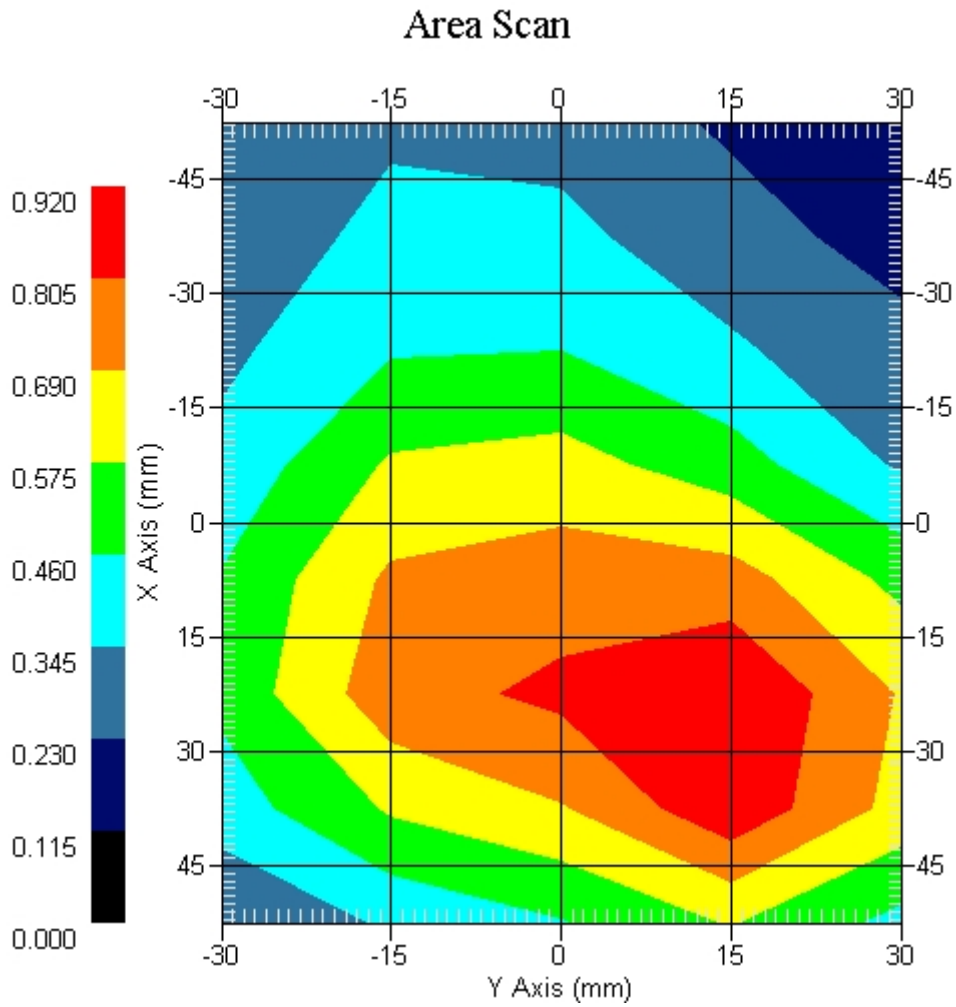
Crest Factor : 2.66
 Tissue Temp. : 21.30 °C
 Ambient Temp. : 22.10 °C
 Area Scan : 6x6x1 : Measurement x=12mm, y=12mm, z=4mm
 Zoom Scan : 5x5x8 : Measurement x=8mm, y=8mm, z=4mm
 Power Drift-Start : 0.497 W/kg
 Power Drift-Finish: 0.517 W/kg
 Power Drift (%) : 4.032

DUT Position : Touch
 Channel : 661



1 gram SAR value : 0.921 W/kg
 10 gram SAR value : 0.608 W/kg
 Area Scan Peak SAR : 0.920 W/kg
 Zoom Scan Peak SAR : 1.342 W/kg

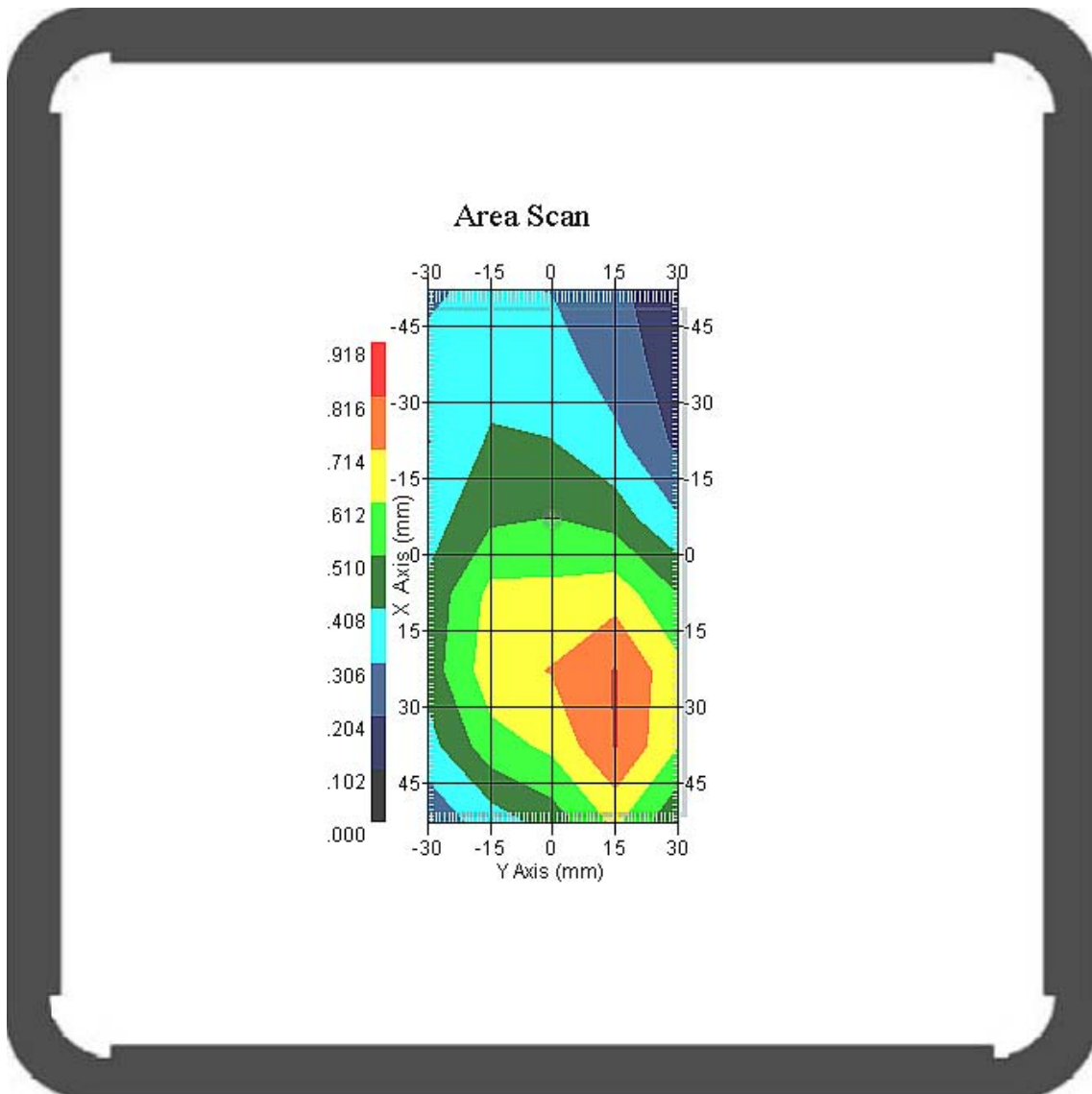
This is previous page plot (zoom in)



Measurement Data

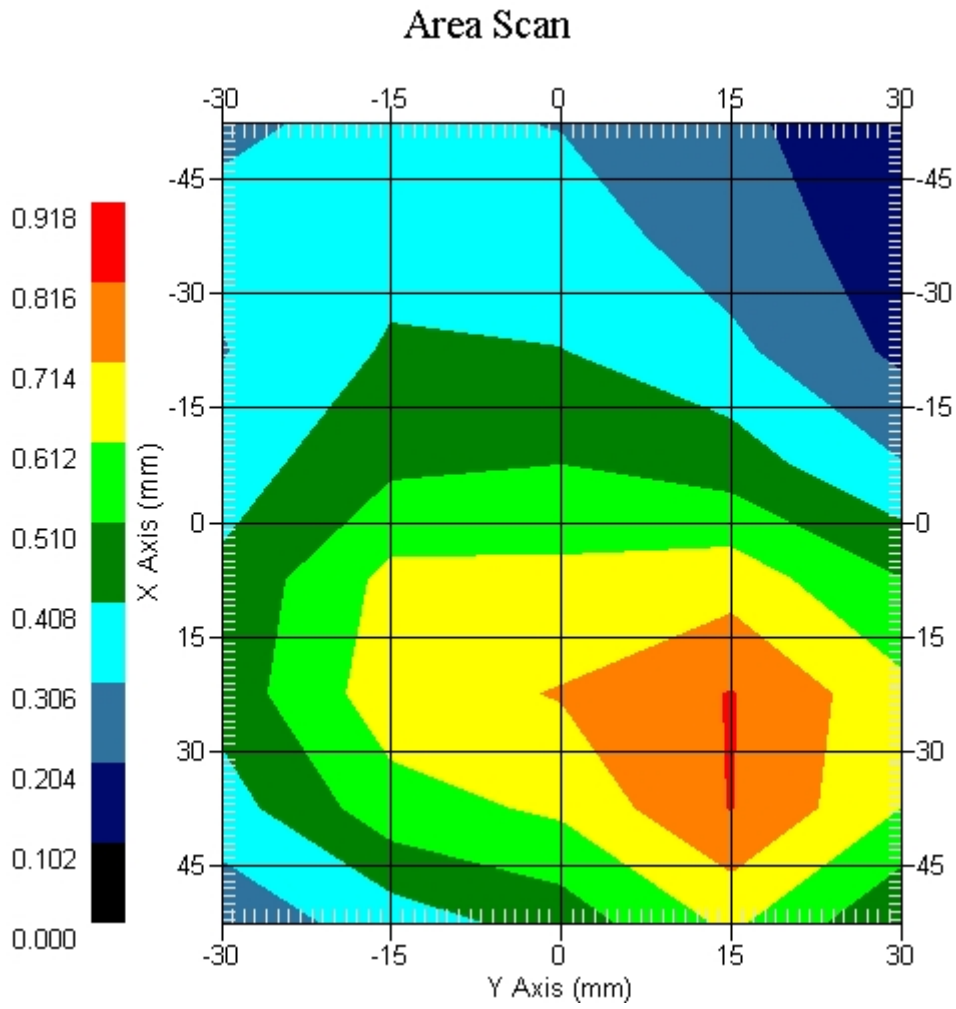
Crest Factor : 2.66
 Tissue Temp. : 21.30 °C
 Ambient Temp. : 22.10 °C
 Area Scan : 6x6x1 : Measurement x=12mm, y=12mm, z=4mm
 Zoom Scan : 5x5x8 : Measurement x=8mm, y=8mm, z=4mm
 Power Drift-Start : 0.472 W/kg
 Power Drift-Finish: 0.457 W/kg
 Power Drift (%) : -3.238

DUT Position : Touch
 Channel : 810



1 gram SAR value : 0.812 W/kg
 10 gram SAR value : 0.535 W/kg
 Area Scan Peak SAR : 0.820 W/kg
 Zoom Scan Peak SAR : 1.259 W/kg

This is previous page plot (zoom in)



ALSAS-10U VER 2.3.6 APREL Laboratories
SAR Test Report-PCS 1900 EGPRS 3 Slot

Report Date : 02-Mar-2009
Measurement Date : 02-Mar-2009

Product Data

Device Name : Mobile Phone
Type : Std Form Cell Phone
Model : M900
Frequency : 1900.00 MHz
Max. Transmit Pwr : 1 W
Drift Time : 0 min(s)
Length : 119.2 mm
Width : 62.2 mm
Depth : 17.9 mm
Antenna Type : Internal

Phantom Data

Type : Uni-Phantom
Size (mm) : 280 x 280 x 200
Location : Center

Tissue Data

Type : BODY
Serial No. : 324-B
Frequency : 1900.00 MHz
Last Calib. Date : 02-Mar-2009
Temperature : 21.20 °C
Ambient Temp. : 22.00 °C
Humidity : 51.00 RH%
Epsilon : 54.27 F/m
Sigma : 1.56 S/m
Density : 1000.00 kg/cu. m

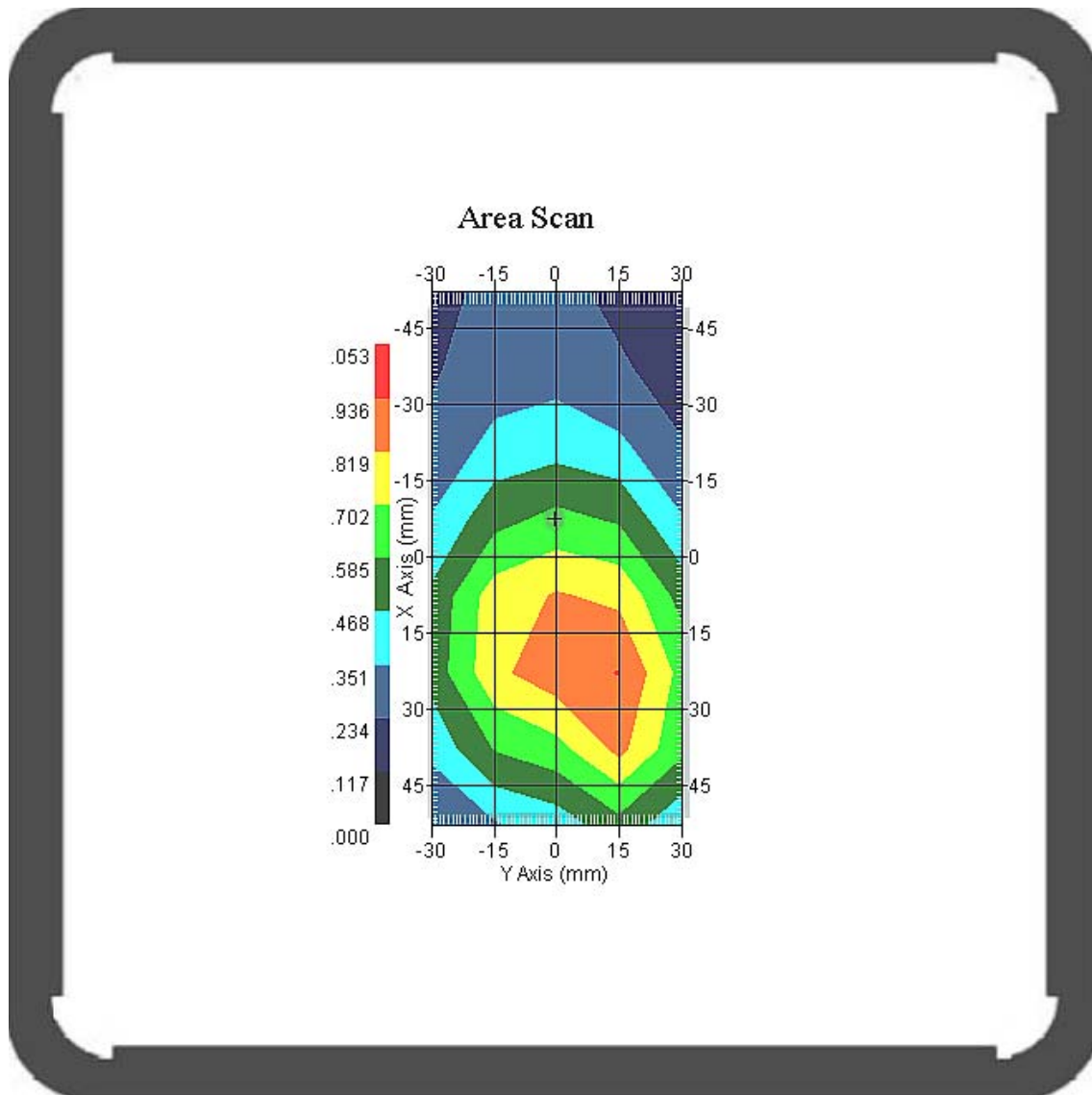
Probe Data

Name : Probe 265
Model : E020
Type : E-Field Triangle
Serial No. : 265
Last Calib. Date : 09-May-2008
Frequency : 1900.00 MHz
Duty Cycle Factor: 2.66
Conversion Factor: 5.1
Probe Sensitivity: 1.20 1.20 1.20 $\mu\text{V}/(\text{V}/\text{m})^2$
Compression Point: 95.00 mV
Offset : 1.56 mm

Measurement Data

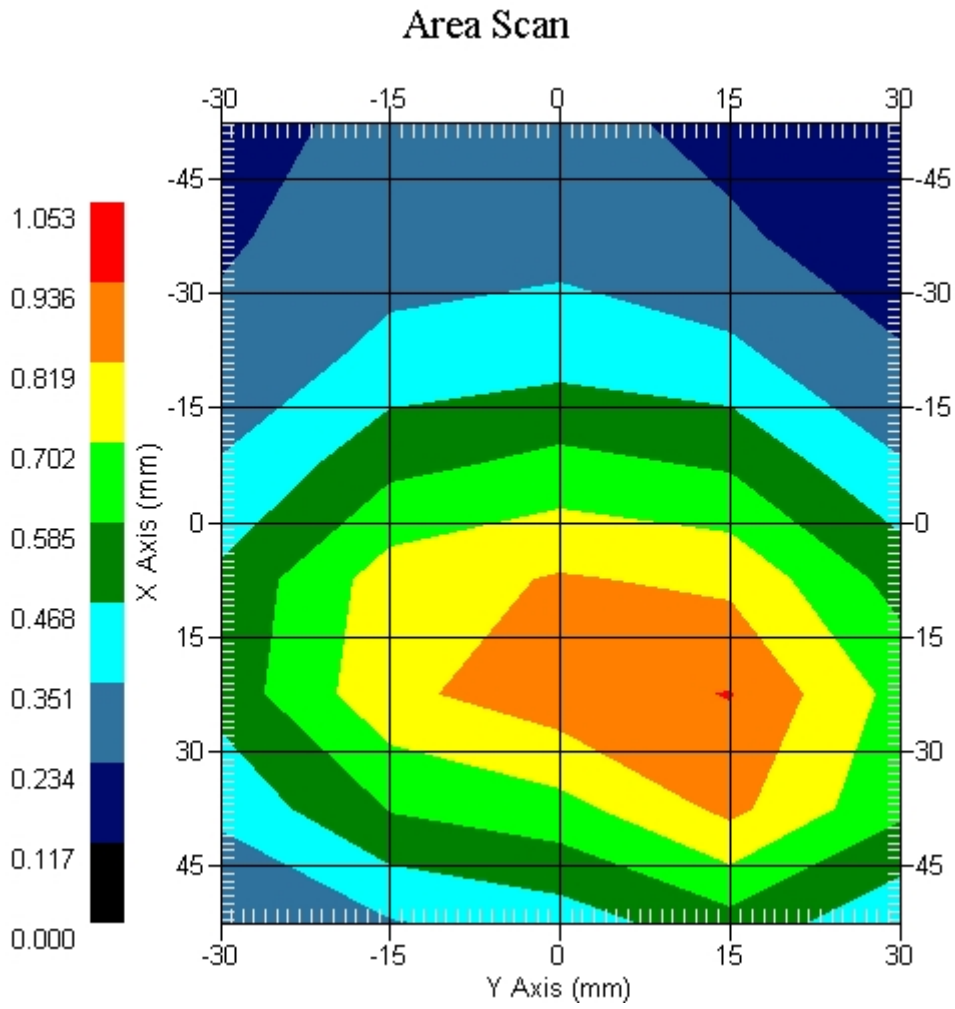
Crest Factor : 2.66
 Tissue Temp. : 21.30 °C
 Ambient Temp. : 22.10 °C
 Area Scan : 6x6x1 : Measurement x=12mm, y=12mm, z=4mm
 Zoom Scan : 5x5x8 : Measurement x=8mm, y=8mm, z=4mm
 Power Drift-Start : 0.457 W/kg
 Power Drift-Finish: 0.448 W/kg
 Power Drift (%) : -1.969

DUT Position : Touch
 Channel : 661

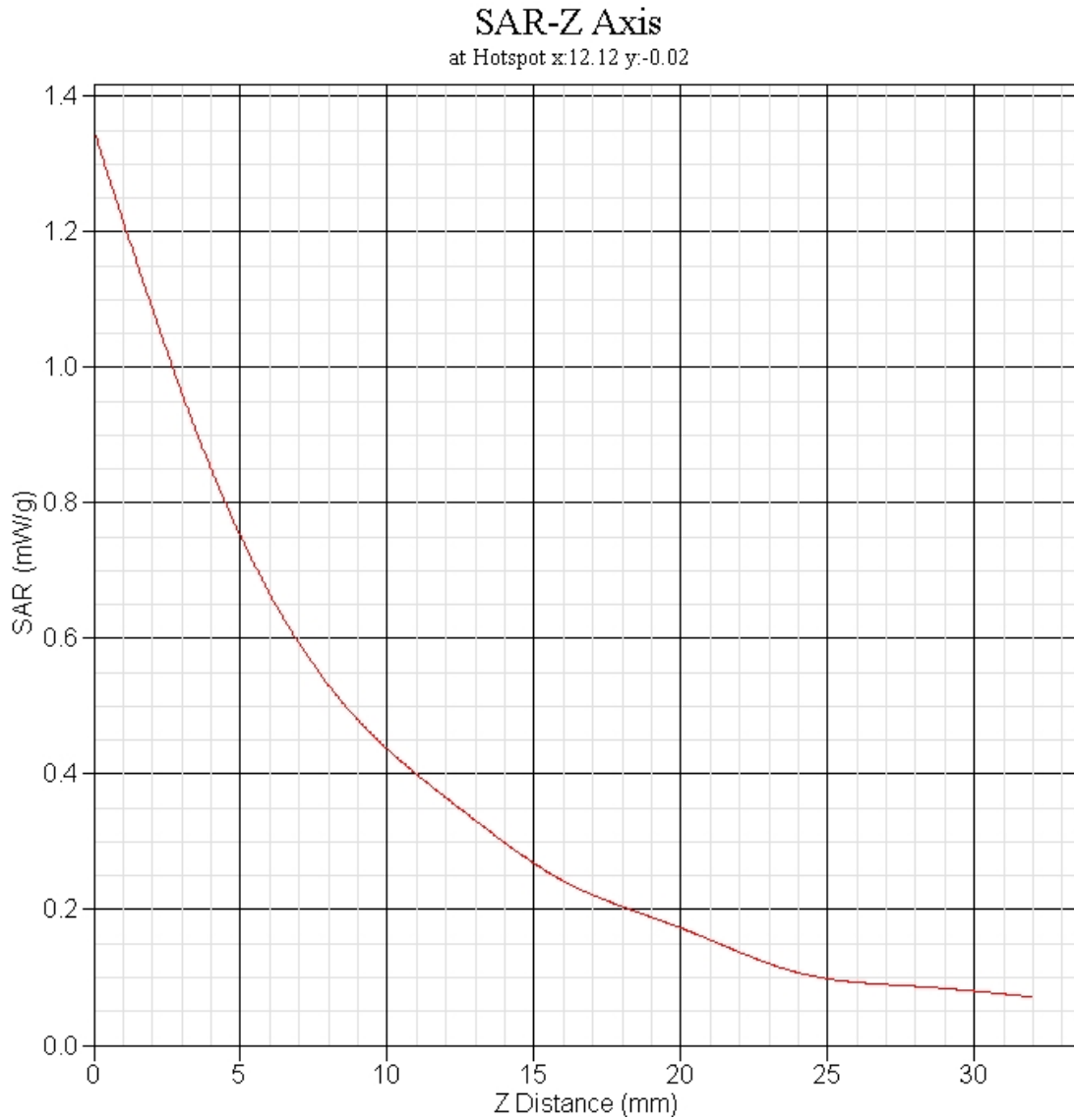


1 gram SAR value : 0.854 W/kg
 10 gram SAR value : 0.523 W/kg
 Area Scan Peak SAR : 1.040 W/kg
 Zoom Scan Peak SAR : 1.355 W/kg

This is previous page plot (zoom in)



PCS 1900 GPRS 3 Slot EUT Body-worn, Z-Axis plot
Channel: 661



ALSAS-10U VER 2.3.6 APREL Laboratories
SAR Test Report-WCDMA Band V

Report Date : 03-Mar-2009
Measurement Date : 03-Mar-2009

Product Data

Device Name : Mobile Phone
Type : Other
Model : M900
Frequency : 850.00 MHz
Max. Transmit Pwr : 2 W
Drift Time : 0 min(s)
Length : 119.2 mm
Width : 62.2 mm
Depth : 17.9 mm
Antenna Type : Internal

Phantom Data

Type : SAM-Left
Size (mm) : 280 x 280 x 280
Location : Left

Tissue Data

Type : HEAD
Serial No. : 322-H
Frequency : 835.00 MHz
Last Calib. Date : 02-Feb-2009
Temperature : 21.50 °C
Ambient Temp. : 22.30 °C
Humidity : 51.00 RH%
Epsilon : 43.54 F/m
Sigma : 0.91 S/m
Density : 1000.00 kg/cu. m

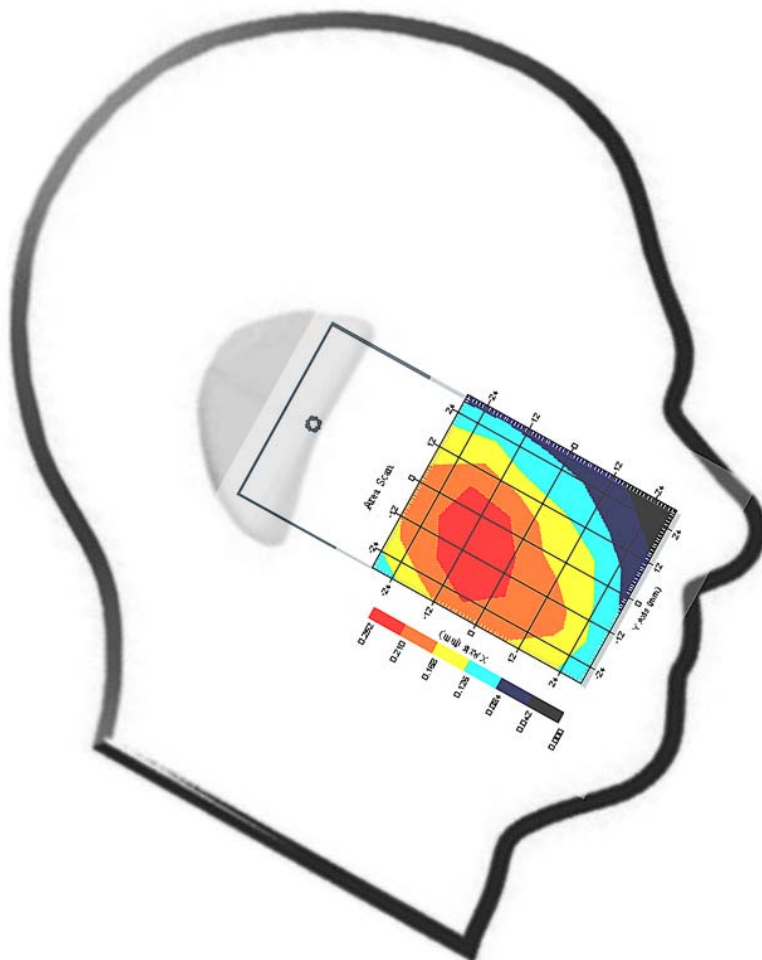
Probe Data

Name : Probe 265
Model : E020
Type : E-Field Triangle
Serial No. : 265
Last Calib. Date : 09-May-2008
Frequency : 835.00 MHz
Duty Cycle Factor: 1
Conversion Factor: 6.2
Probe Sensitivity: 1.20 1.20 1.20 $\mu\text{V}/(\text{V}/\text{m})^2$
Compression Point: 95.00 mV
Offset : 1.56 mm

Measurement Data

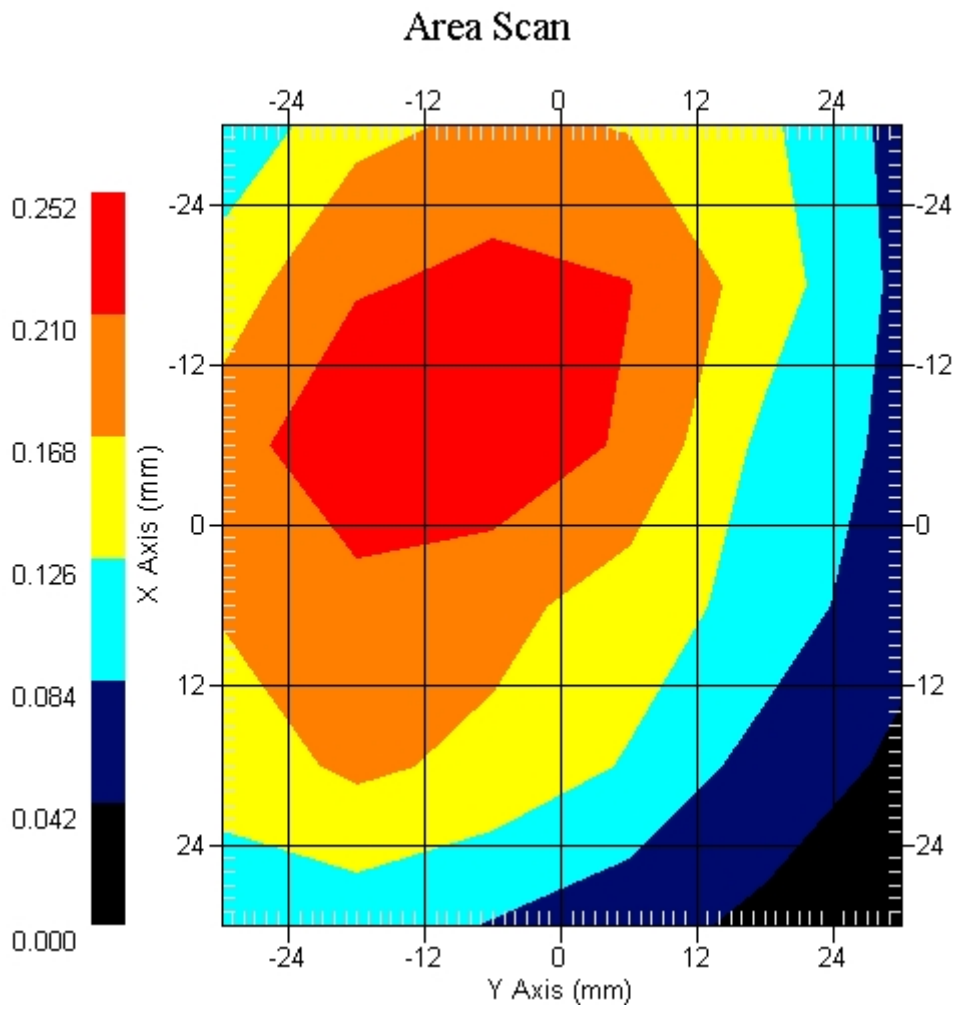
Crest Factor : 1
Tissue Temp. : 21.50 °C
Ambient Temp. : 22.30 °C
Area Scan : 6x6x1 : Measurement x=12mm, y=12mm, z=4mm
Zoom Scan : 5x5x8 : Measurement x=8mm, y=8mm, z=4mm
Power Drift-Start : 0.016 W/kg
Power Drift-Finish: 0.016 W/kg
Power Drift (%) : -0.361

DUT Position : Touch
Channel : 4132



1 gram SAR value : 0.188 W/kg
10 gram SAR value : 0.131 W/kg
Area Scan Peak SAR : 0.250 W/kg
Zoom Scan Peak SAR : 0.320 W/kg

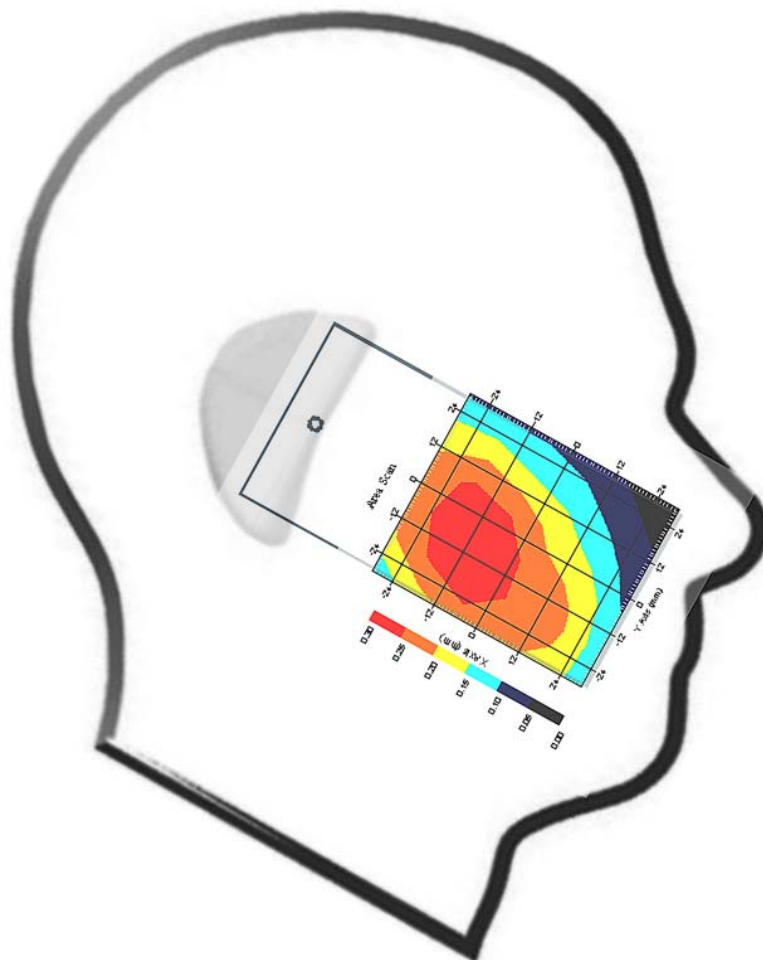
This is previous page plot (zoom in)



Measurement Data

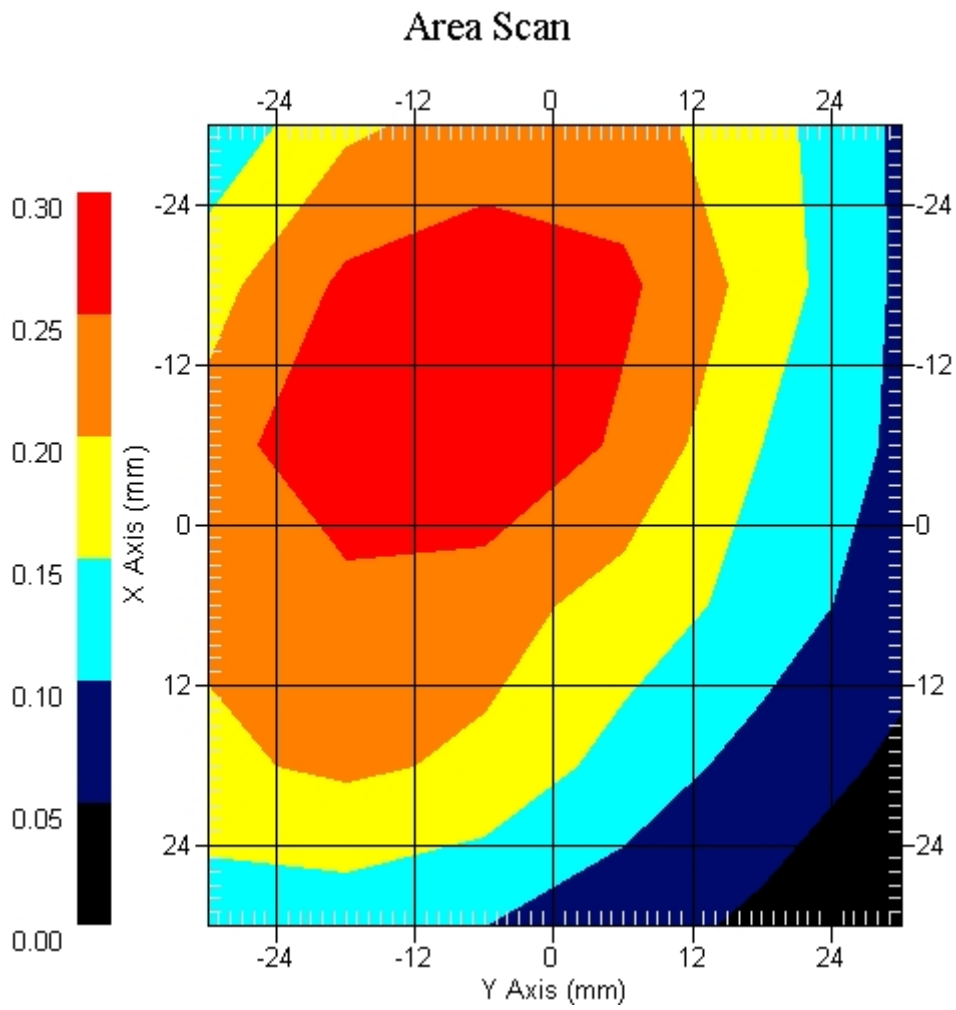
Crest Factor : 1
Tissue Temp. : 21.50 °C
Ambient Temp. : 22.30 °C
Area Scan : 6x6x1 : Measurement x=12mm, y=12mm, z=4mm
Zoom Scan : 5x5x8 : Measurement x=8mm, y=8mm, z=4mm
Power Drift-Start : 0.015 W/kg
Power Drift-Finish: 0.015 W/kg
Power Drift (%) : -0.842

DUT Position : Touch
Channel : 4183



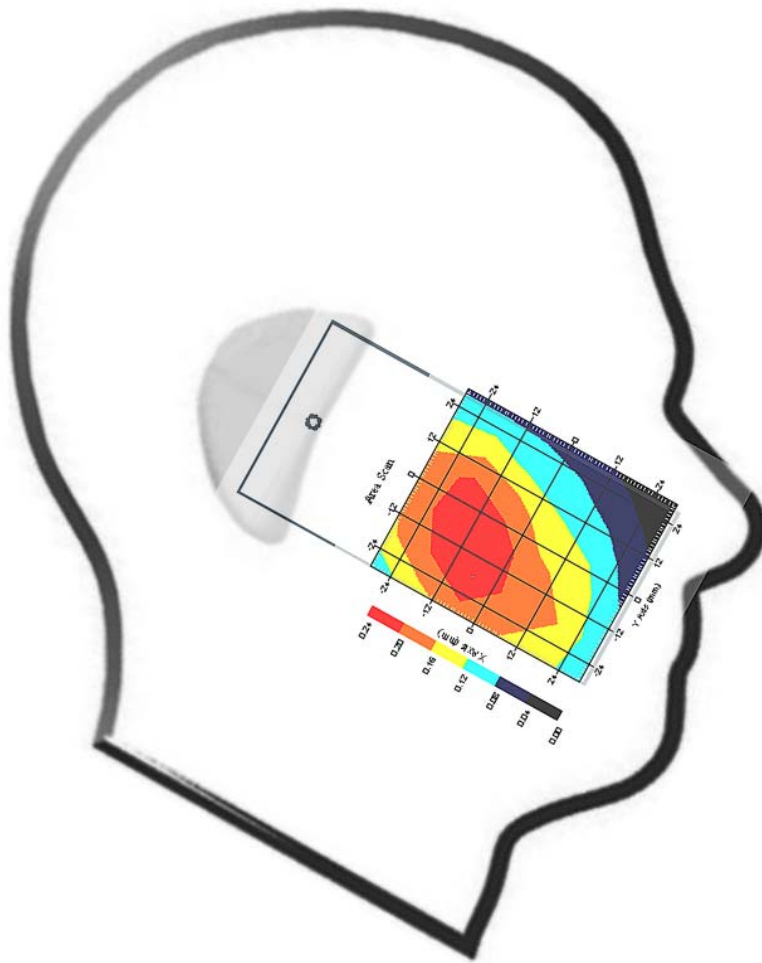
1 gram SAR value : 0.229 W/kg
10 gram SAR value : 0.178 W/kg
Area Scan Peak SAR : 0.300 W/kg
Zoom Scan Peak SAR : 0.363 W/kg

This is previous page plot (zoom in)



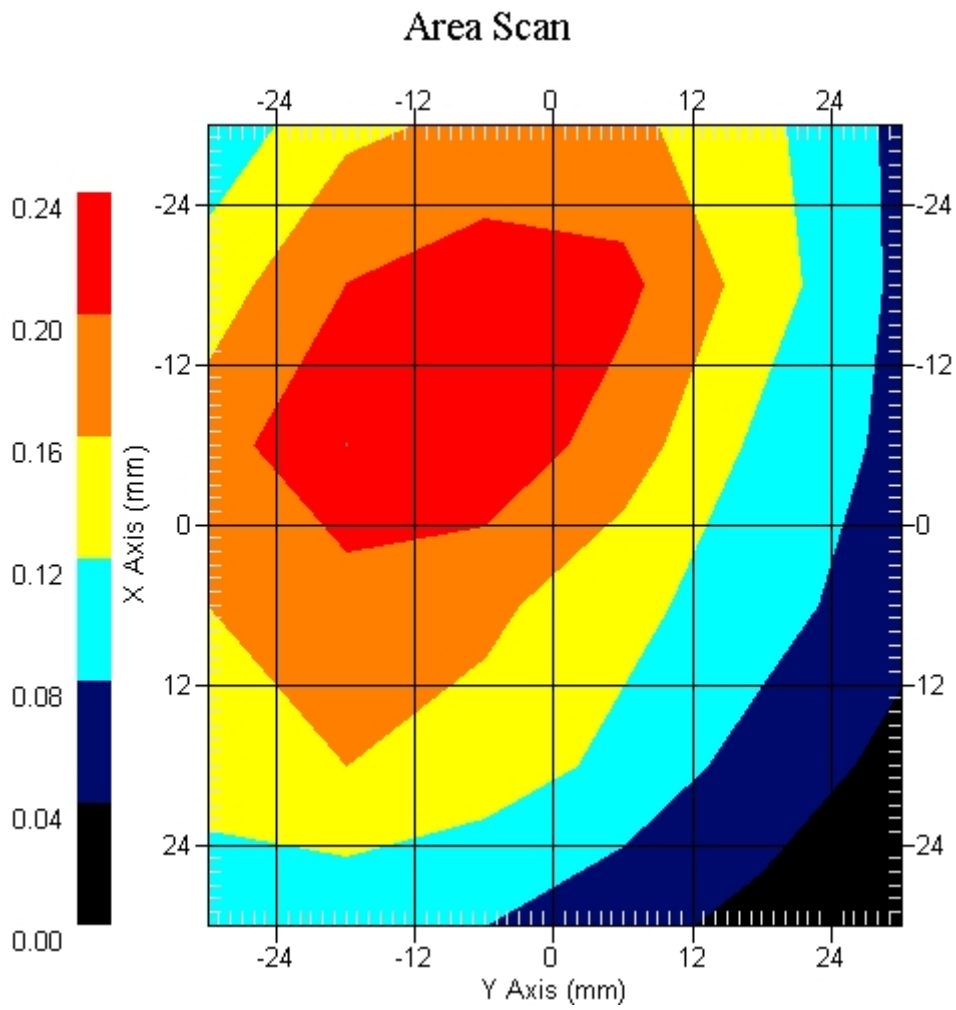
Crest Factor : 1
Tissue Temp. : 21.50 °C
Ambient Temp. : 22.30 °C
Area Scan : 6x6x1 : Measurement x=12mm, y=12mm, z=4mm
Zoom Scan : 5x5x8 : Measurement x=8mm, y=8mm, z=4mm
Power Drift-Start : 0.012 W/kg
Power Drift-Finish: 0.012 W/kg
Power Drift (%) : 0.828

DUT Position : Touch
Channel : 4233



1 gram SAR value : 0.176 W/kg
10 gram SAR value : 0.125 W/kg
Area Scan Peak SAR : 0.240 W/kg
Zoom Scan Peak SAR : 0.310 W/kg

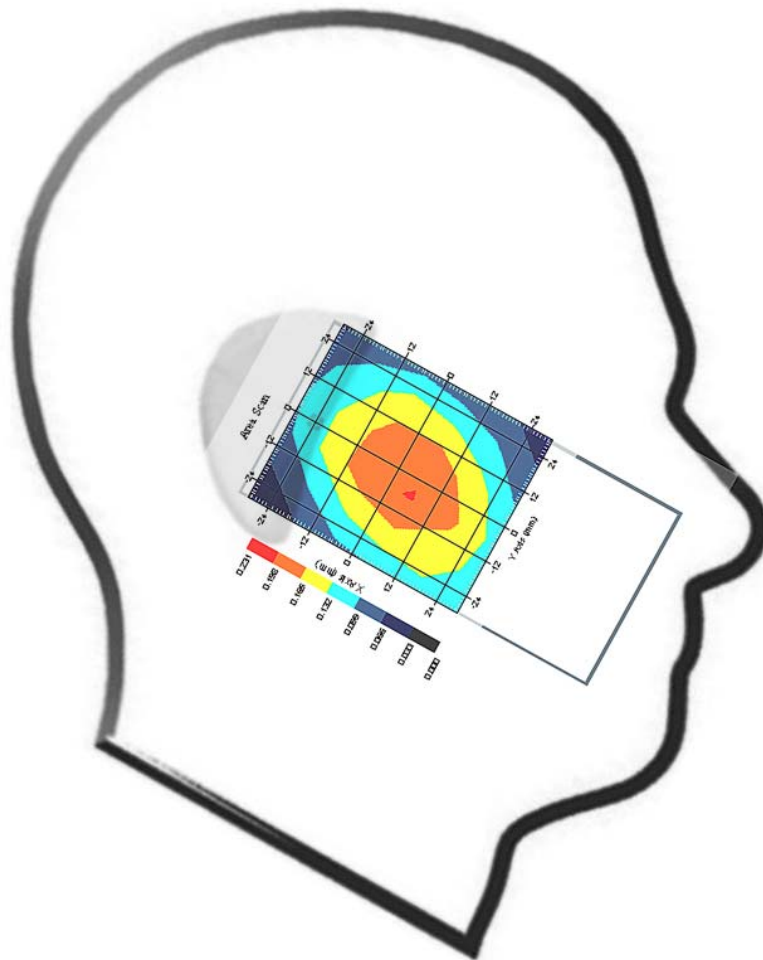
This is previous page plot (zoom in)



Measurement Data

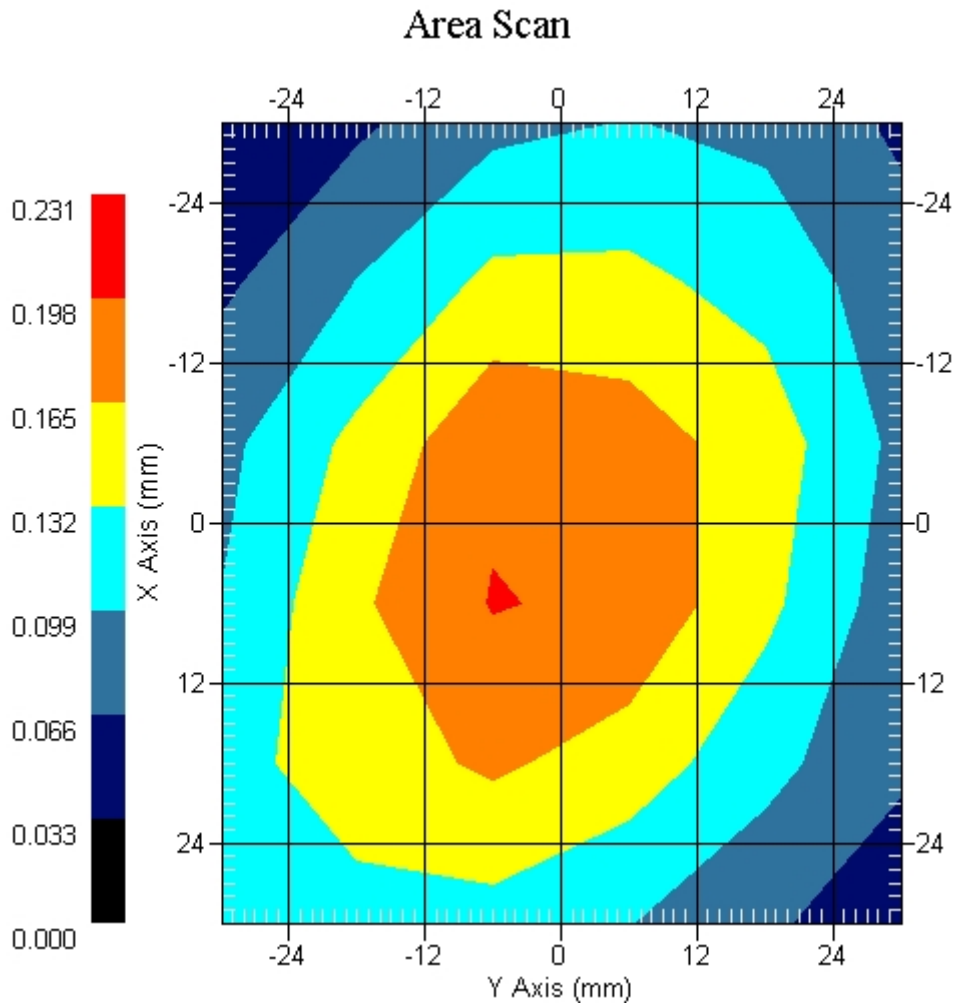
Crest Factor : 1
Tissue Temp. : 21.50 °C
Ambient Temp. : 22.30 °C
Area Scan : 6x6x1 : Measurement x=12mm, y=12mm, z=4mm
Zoom Scan : 5x5x8 : Measurement x=8mm, y=8mm, z=4mm
Power Drift-Start : 0.084 W/kg
Power Drift-Finish: 0.082 W/kg
Power Drift (%) : -2.978

DUT Position : 15° Tilt
Channel : 4132



1 gram SAR value : 0.164 W/kg
10 gram SAR value : 0.102 W/kg
Area Scan Peak SAR : 0.200 W/kg
Zoom Scan Peak SAR : 0.210 W/kg

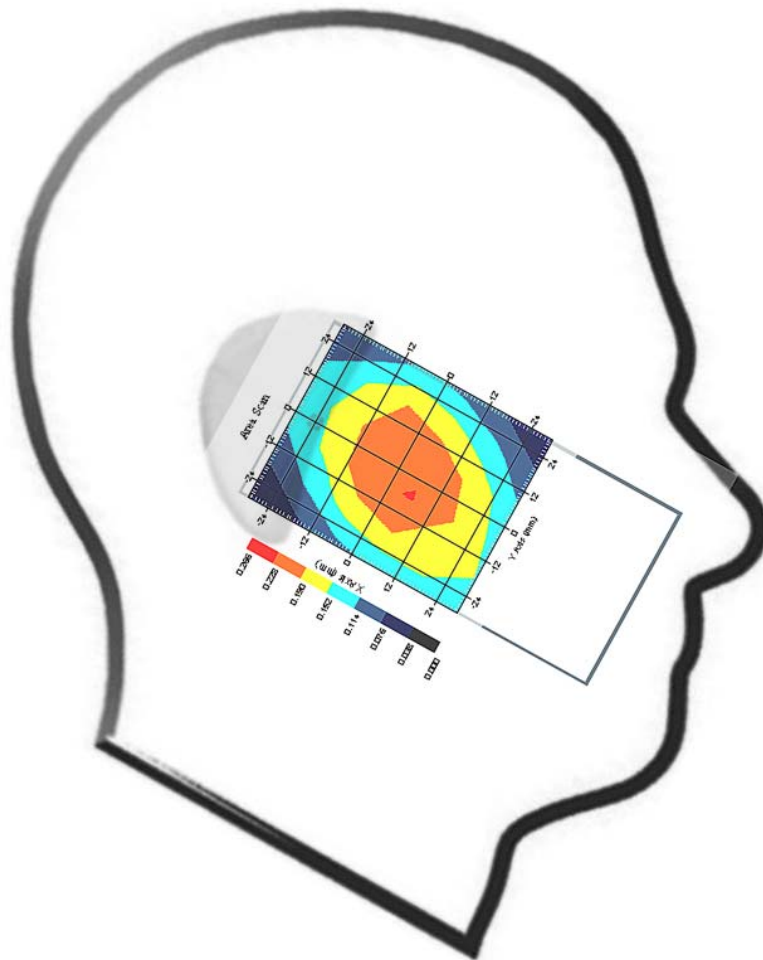
This is previous page plot (zoom in)



Measurement Data

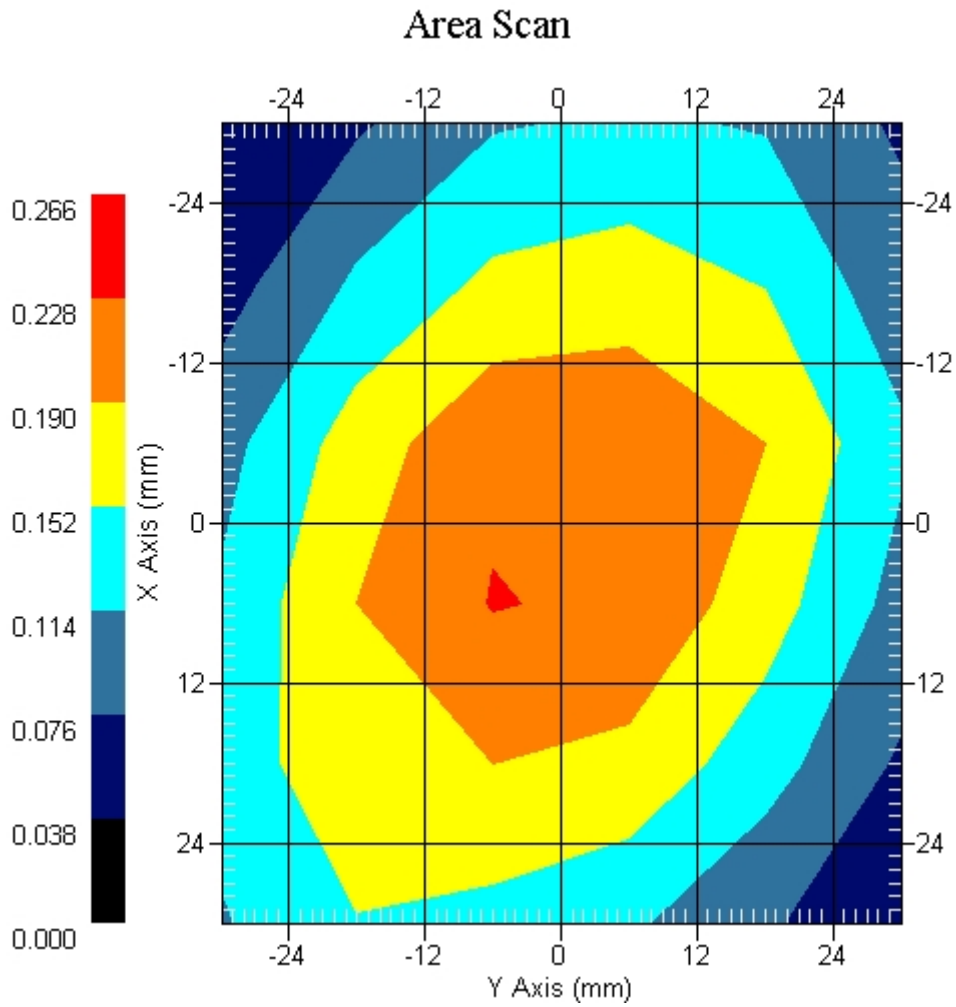
Crest Factor : 1
 Tissue Temp. : 21.50 °C
 Ambient Temp. : 22.30 °C
 Area Scan : 6x6x1 : Measurement x=12mm, y=12mm, z=4mm
 Zoom Scan : 5x5x8 : Measurement x=8mm, y=8mm, z=4mm
 Power Drift-Start : 0.096 W/kg
 Power Drift-Finish: 0.096 W/kg
 Power Drift (%) : -0.054

DUT Position : 15° Tilt
 Channel : 4183



1 gram SAR value : 0.196 W/kg
 10 gram SAR value : 0.162 W/kg
 Area Scan Peak SAR : 0.230 W/kg
 Zoom Scan Peak SAR : 0.240 W/kg

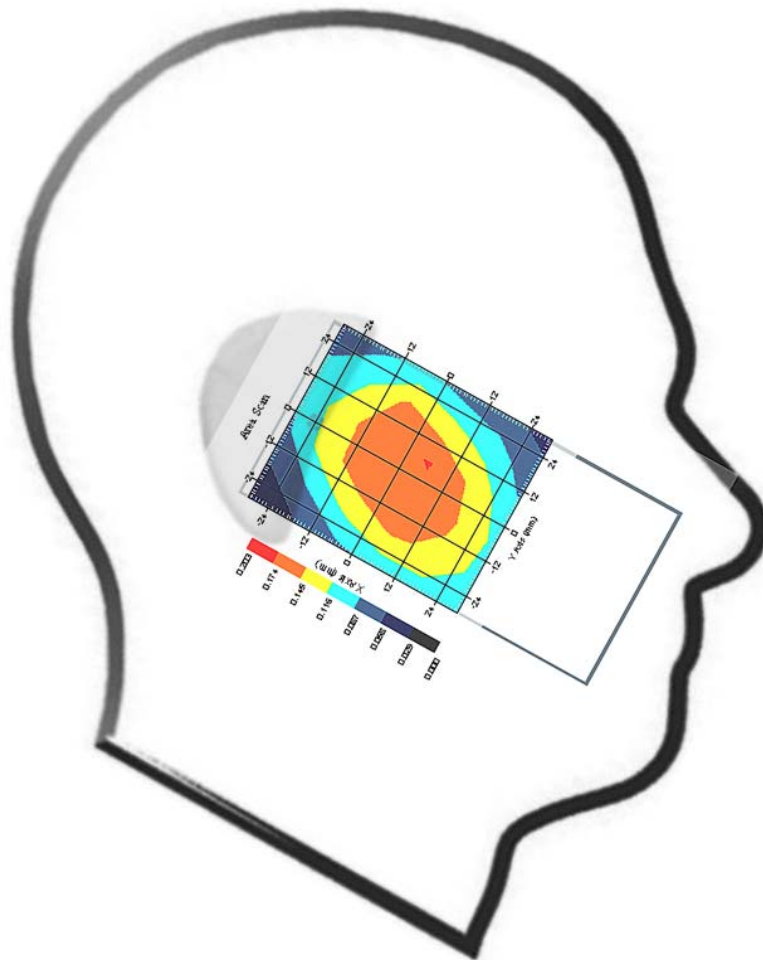
This is previous page plot (zoom in)



Measurement Data

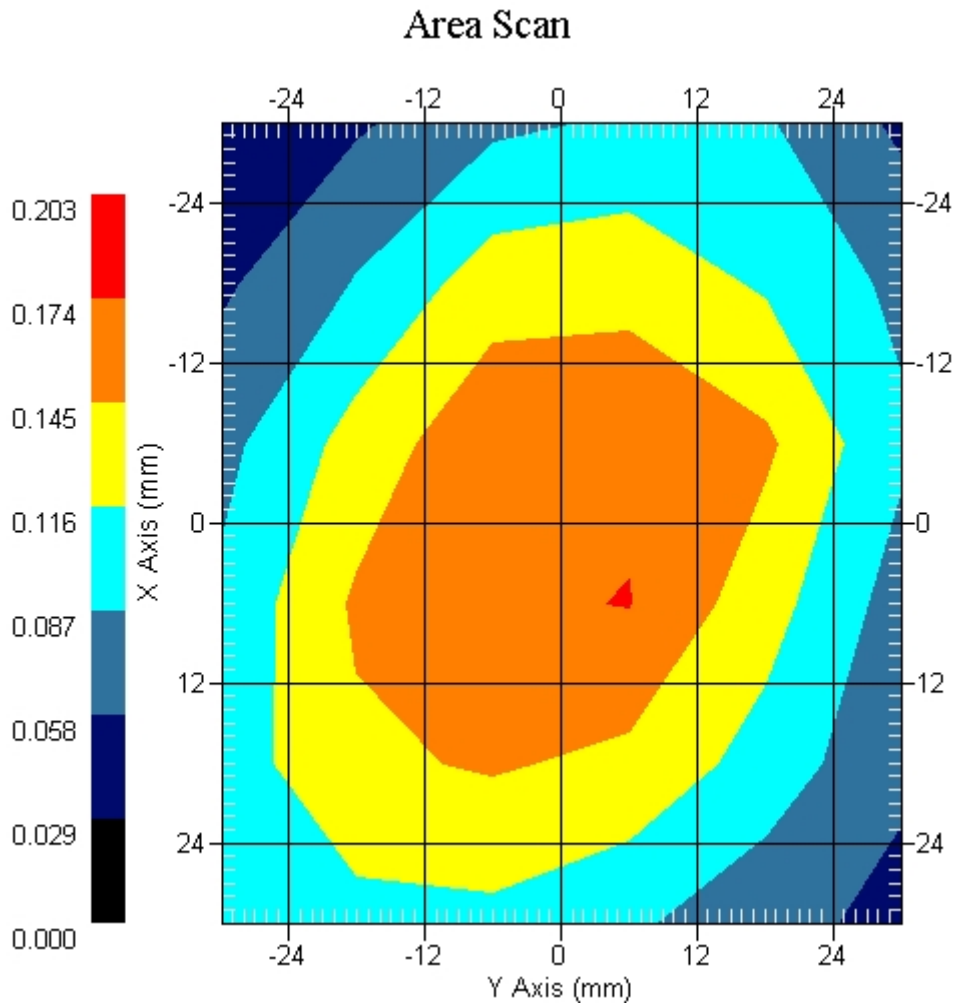
Crest Factor : 1
 Tissue Temp. : 21.50 °C
 Ambient Temp. : 22.30 °C
 Area Scan : 6x6x1 : Measurement x=12mm, y=12mm, z=4mm
 Zoom Scan : 5x5x8 : Measurement x=8mm, y=8mm, z=4mm
 Power Drift-Start : 0.012 W/kg
 Power Drift-Finish: 0.012 W/kg
 Power Drift (%) : -0.877

DUT Position : 15° Tilt
 Channel : 4233



1 gram SAR value : 0.145 W/kg
 10 gram SAR value : 0.074 W/kg
 Area Scan Peak SAR : 0.175 W/kg
 Zoom Scan Peak SAR : 0.190 W/kg

This is previous page plot (zoom in)



ALSAS-10U VER 2.3.6 APREL Laboratories
SAR Test Report-WCDMA Band VReport Date : 03-Mar-2009
Measurement Date : 03-Mar-2009

Product Data

Device Name : Mobile Phone
Type : Other
Model : M900
Frequency : 850.00 MHz
Max. Transmit Pwr : 2 W
Drift Time : 0 min(s)
Length : 119.2 mm
Width : 62.2 mm
Depth : 17.9 mm
Antenna Type : Internal

Phantom Data

Type : SAM-Right
Size (mm) : 280 x 280 x 280
Location : Right

Tissue Data

Type : HEAD
Serial No. : 322-H
Frequency : 835.00 MHz
Last Calib. Date : 02-Feb-2009
Temperature : 21.50 °C
Ambient Temp. : 22.30 °C
Humidity : 51.00 RH%
Epsilon : 43.54 F/m
Sigma : 0.91 S/m
Density : 1000.00 kg/cu. m

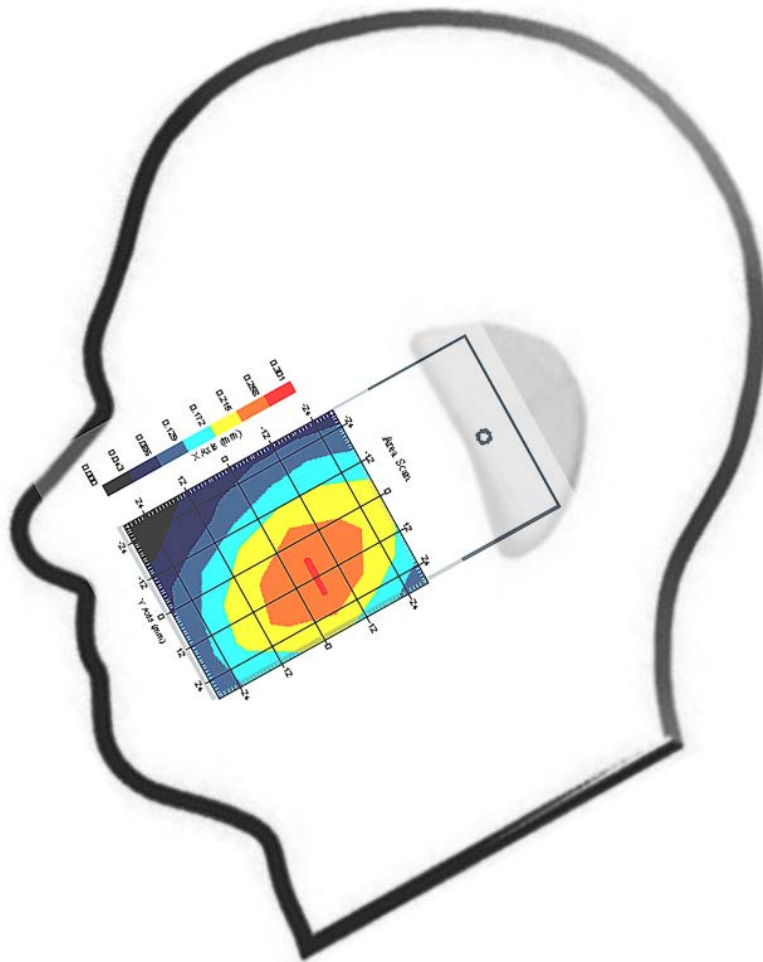
Probe Data

Name : Probe 265
Model : E020
Type : E-Field Triangle
Serial No. : 265
Last Calib. Date : 09-May-2008
Frequency : 835.00 MHz
Duty Cycle Factor: 1
Conversion Factor: 6.2
Probe Sensitivity: 1.20 1.20 1.20 $\mu\text{V}/(\text{V}/\text{m})^2$
Compression Point: 95.00 mV
Offset : 1.56 mm

Measurement Data

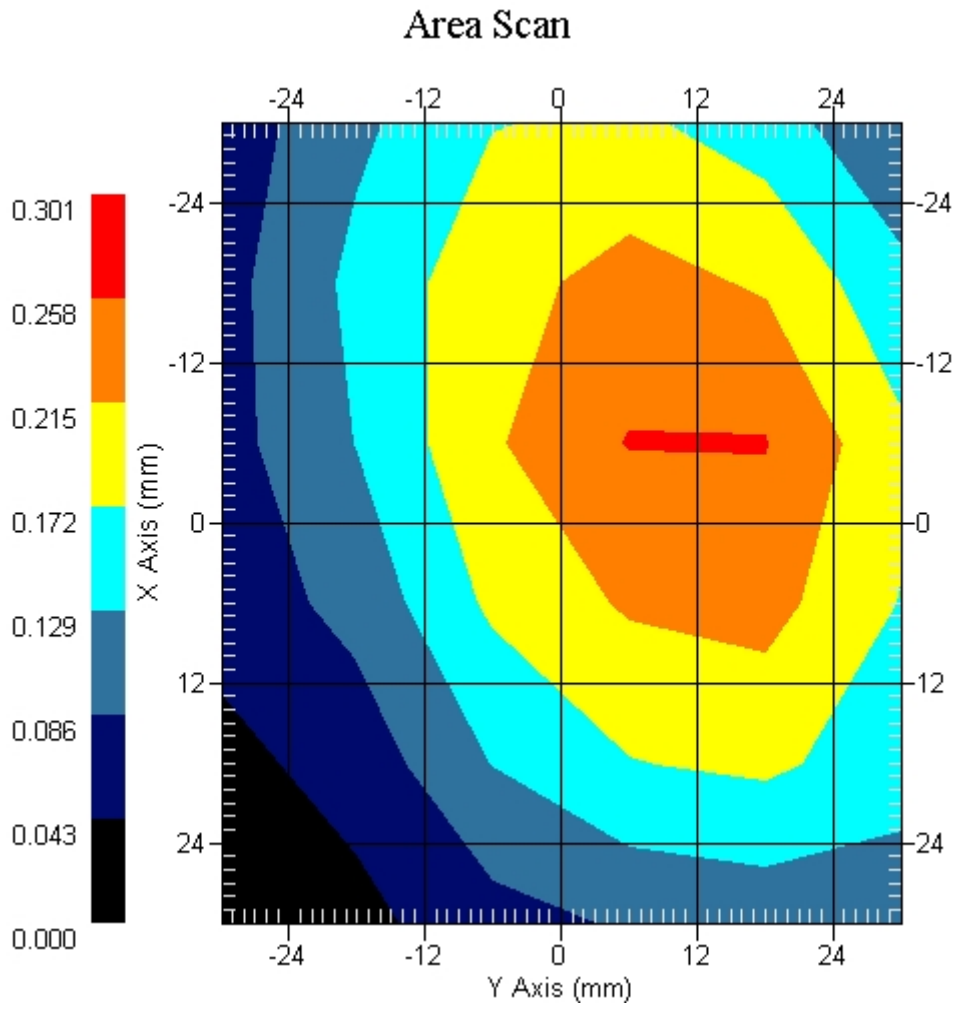
Crest Factor : 1
 Tissue Temp. : 21.50 °C
 Ambient Temp. : 22.30 °C
 Area Scan : 6x6x1 : Measurement x=12mm, y=12mm, z=4mm
 Zoom Scan : 5x5x8 : Measurement x=8mm, y=8mm, z=4mm
 Power Drift-Start : 0.030 W/kg
 Power Drift-Finish: 0.030 W/kg
 Power Drift (%) : 0.955

DUT Position : Touch
 Channel : 4132



1 gram SAR value : 0.182 W/kg
 10 gram SAR value : 0.140 W/kg
 Area Scan Peak SAR : 0.260 W/kg
 Zoom Scan Peak SAR : 0.331 W/kg

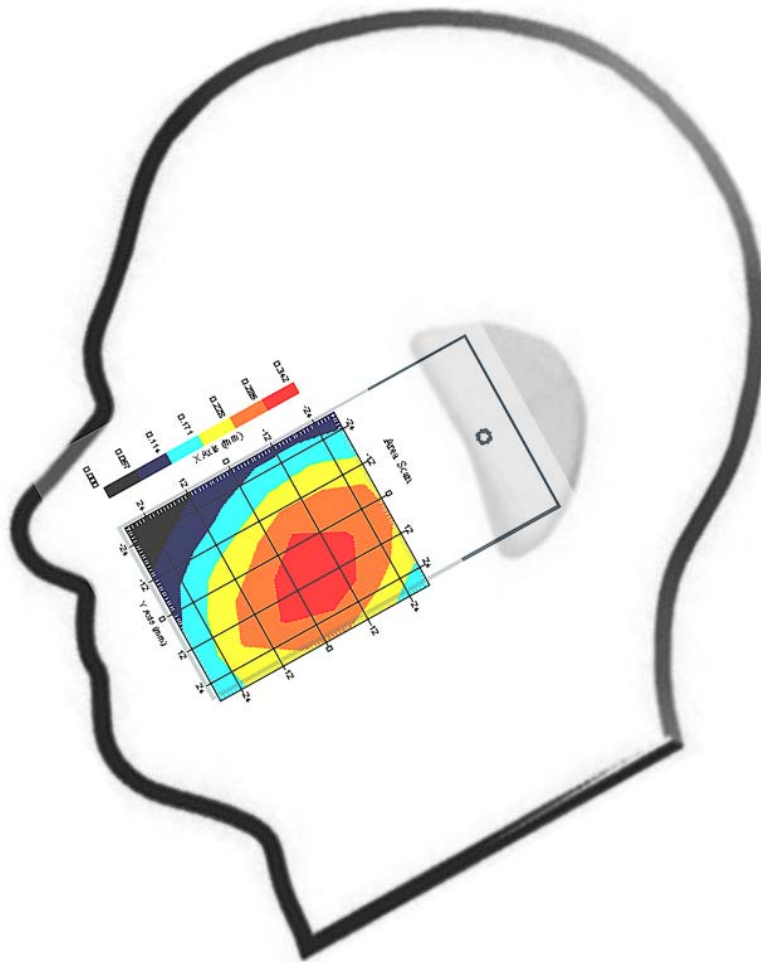
This is previous page plot (zoom in)



Measurement Data

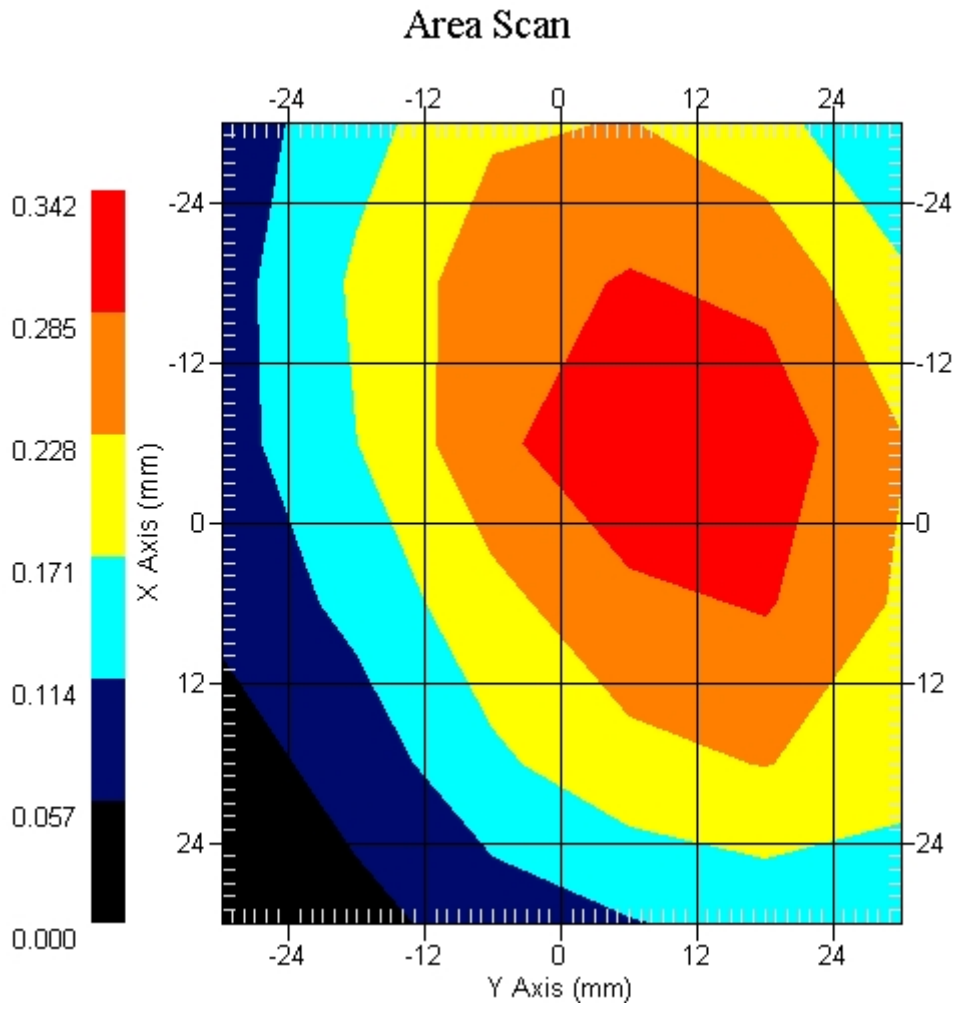
Crest Factor : 1
Tissue Temp. : 21.50 °C
Ambient Temp. : 22.30 °C
Area Scan : 6x6x1 : Measurement x=12mm, y=12mm, z=4mm
Zoom Scan : 5x5x8 : Measurement x=8mm, y=8mm, z=4mm
Power Drift-Start : 0.037 W/kg
Power Drift-Finish: 0.038 W/kg
Power Drift (%) : 2.702

DUT Position : Touch
Channel : 4183



1 gram SAR value : 0.243 W/kg
10 gram SAR value : 0.201 W/kg
Area Scan Peak SAR : 0.340 W/kg
Zoom Scan Peak SAR : 0.396 W/kg

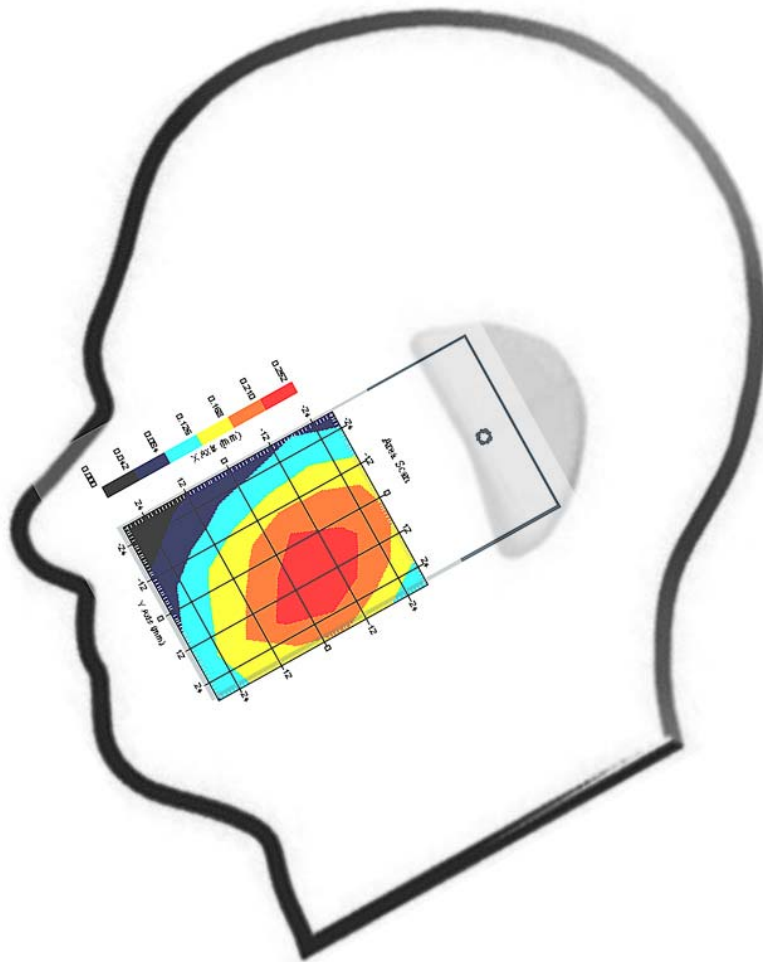
This is previous page plot (zoom in)



Measurement Data

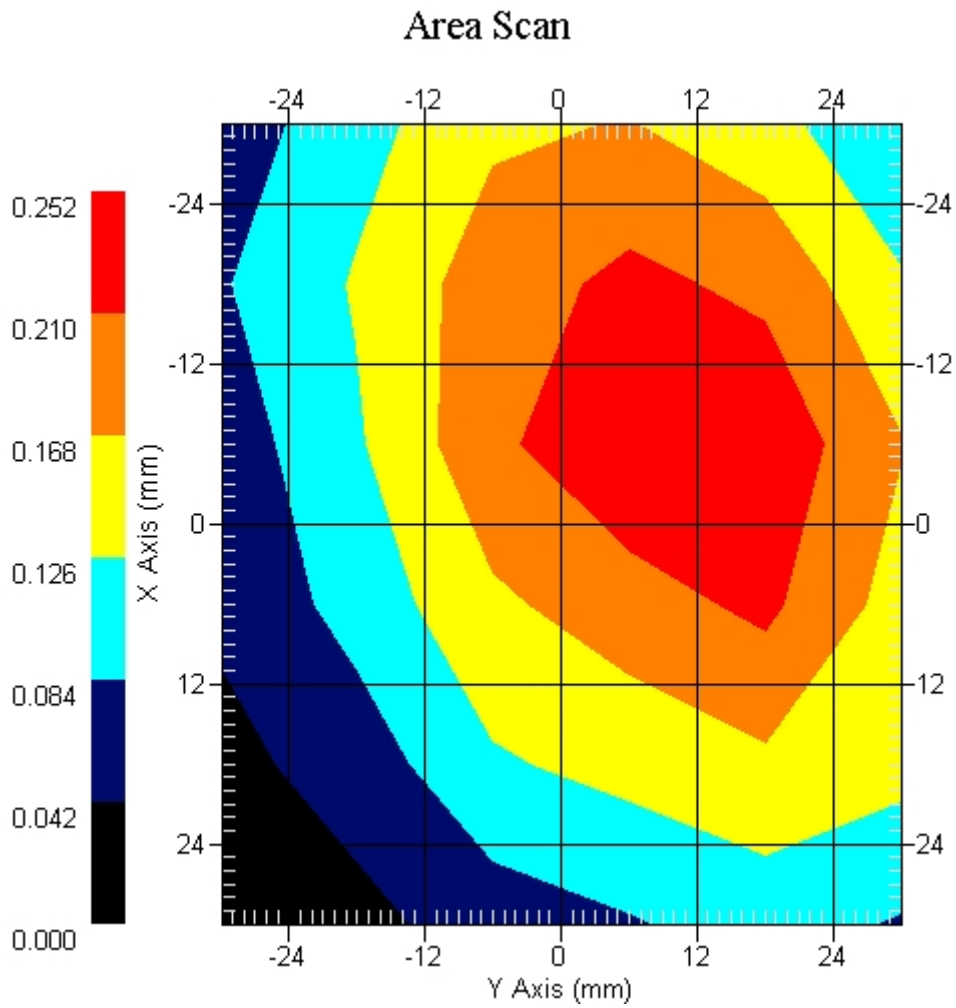
Crest Factor : 1
Tissue Temp. : 21.50 °C
Ambient Temp. : 22.30 °C
Area Scan : 6x6x1 : Measurement x=12mm, y=12mm, z=4mm
Zoom Scan : 5x5x8 : Measurement x=8mm, y=8mm, z=4mm
Power Drift-Start : 0.028 W/kg
Power Drift-Finish: 0.028 W/kg
Power Drift (%) : -0.007

DUT Position : Touch
Channel : 4233



1 gram SAR value : 0.185 W/kg
10 gram SAR value : 0.133 W/kg
Area Scan Peak SAR : 0.250 W/kg
Zoom Scan Peak SAR : 0.321 W/kg

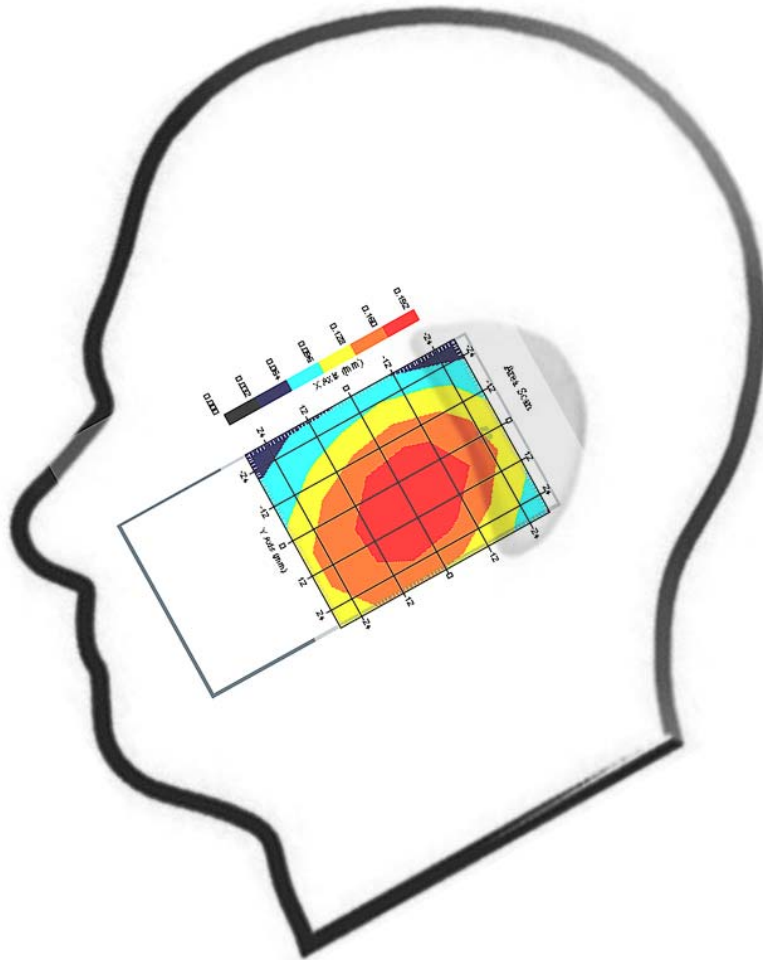
This is previous page plot (zoom in)



Measurement Data

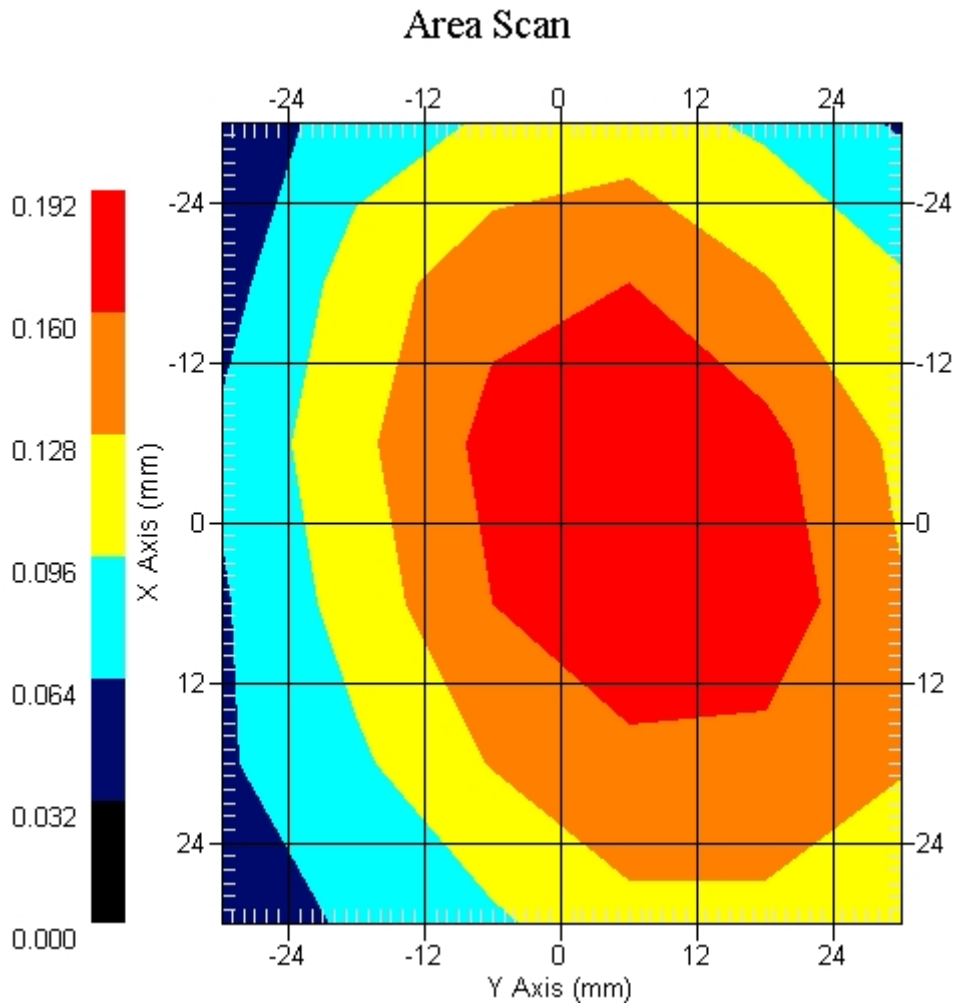
Crest Factor : 1
Tissue Temp. : 21.50 °C
Ambient Temp. : 22.30 °C
Area Scan : 6x6x1 : Measurement x=12mm, y=12mm, z=4mm
Zoom Scan : 5x5x8 : Measurement x=8mm, y=8mm, z=4mm
Power Drift-Start : 0.096 W/kg
Power Drift-Finish: 0.099 W/kg
Power Drift (%) : 2.950

DUT Position : 15° Tilt
Channel : 4132



1 gram SAR value : 0.168 W/kg
10 gram SAR value : 0.095 W/kg
Area Scan Peak SAR : 0.190 W/kg
Zoom Scan Peak SAR : 0.210 W/kg

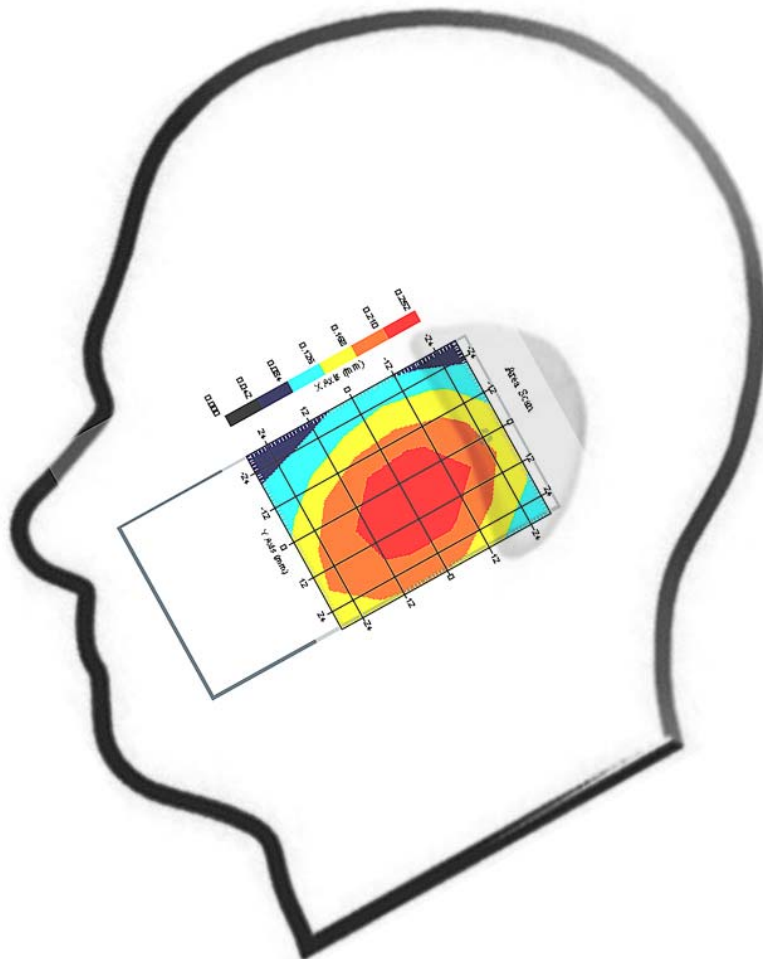
This is previous page plot (zoom in)



Measurement Data

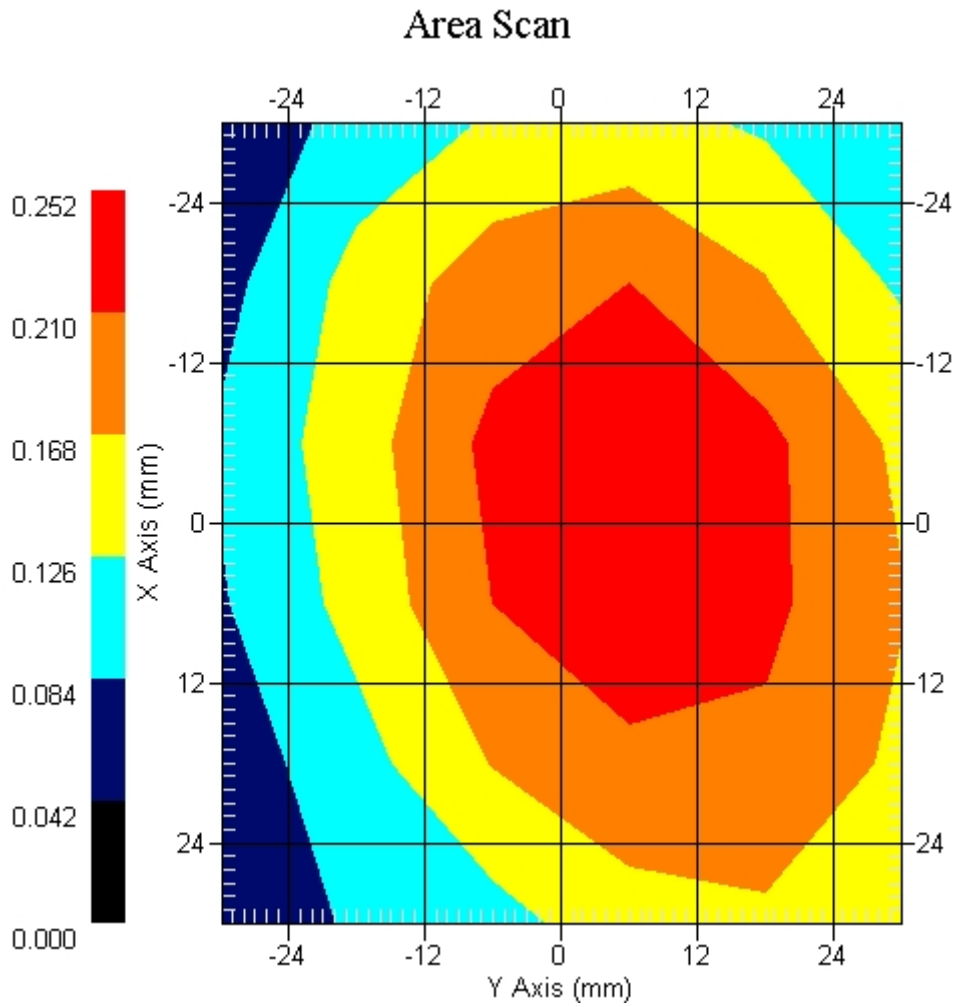
Crest Factor : 1
Tissue Temp. : 21.50 °C
Ambient Temp. : 22.30 °C
Area Scan : 6x6x1 : Measurement x=12mm, y=12mm, z=4mm
Zoom Scan : 5x5x8 : Measurement x=8mm, y=8mm, z=4mm
Power Drift-Start : 0.094 W/kg
Power Drift-Finish: 0.095 W/kg
Power Drift (%) : 1.063

DUT Position : 15° Tilt
Channel : 4183



1 gram SAR value : 0.191 W/kg
10 gram SAR value : 0.122 W/kg
Area Scan Peak SAR : 0.248 W/kg
Zoom Scan Peak SAR : 0.250 W/kg

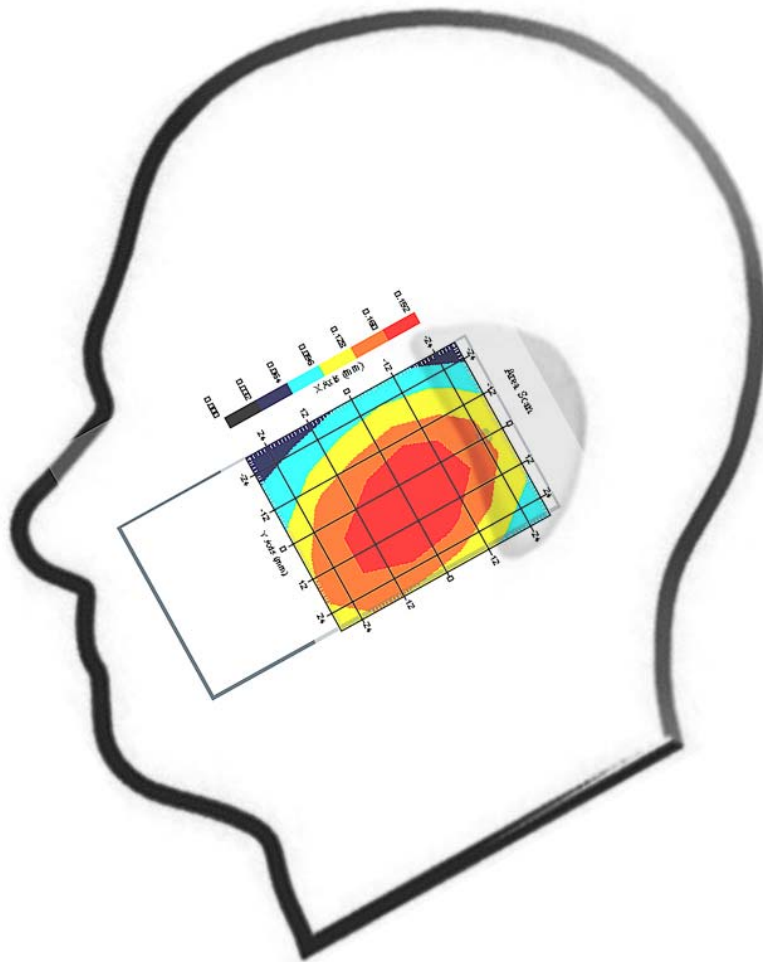
This is previous page plot (zoom in)



Measurement Data

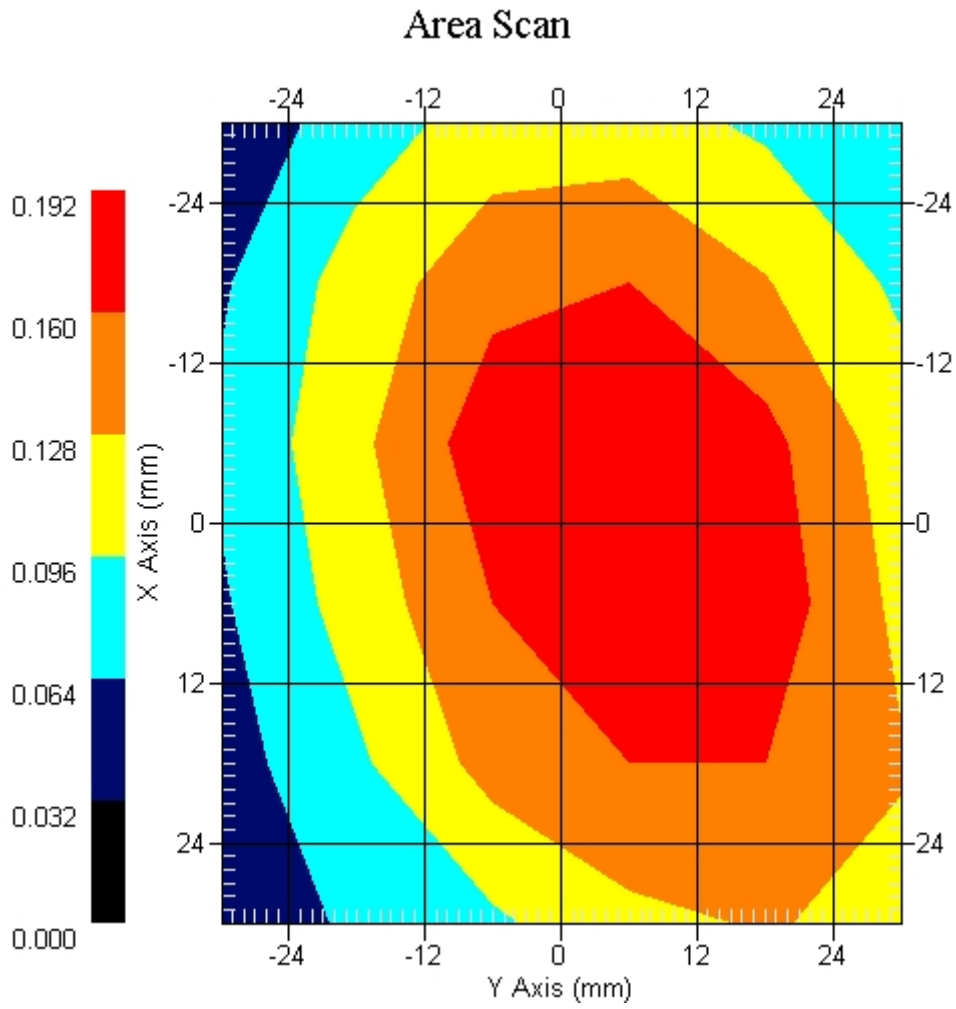
Crest Factor : 1
 Tissue Temp. : 21.50 °C
 Ambient Temp. : 22.30 °C
 Area Scan : 6x6x1 : Measurement x=12mm, y=12mm, z=4mm
 Zoom Scan : 5x5x8 : Measurement x=8mm, y=8mm, z=4mm
 Power Drift-Start : 0.095 W/kg
 Power Drift-Finish: 0.091 W/kg
 Power Drift (%) : -3.656

DUT Position : 15° Tilt
 Channel : 4233



1 gram SAR value : 0.172 W/kg
 10 gram SAR value : 0.096 W/kg
 Area Scan Peak SAR : 0.190 W/kg
 Zoom Scan Peak SAR : 0.215 W/kg

This is previous page plot (zoom in)



ALSAS-10U VER 2.3.6 APREL Laboratories
SAR Test Report-WCDMA Band VReport Date : 03-Mar-2009
Measurement Date : 03-Mar-2009

Product Data

Device Name : Mobile Phone
Type : Other
Model : M900
Frequency : 850.00 MHz
Max. Transmit Pwr : 2 W
Drift Time : 0 min(s)
Length : 119.2 mm
Width : 62.2 mm
Depth : 17.9 mm
Antenna Type : Internal

Phantom Data

Type : Uni-Phantom
Size (mm) : 280 x 280 x 200
Location : Center

Tissue Data

Type : BODY
Serial No. : 322-B
Frequency : 835.00 MHz
Last Calib. Date : 03-Mar-2009
Temperature : 21.50 °C
Ambient Temp. : 22.30 °C
Humidity : 51.00 RH%
Epsilon : 56.01 F/m
Sigma : 0.94 S/m
Density : 1000.00 kg/cu. m

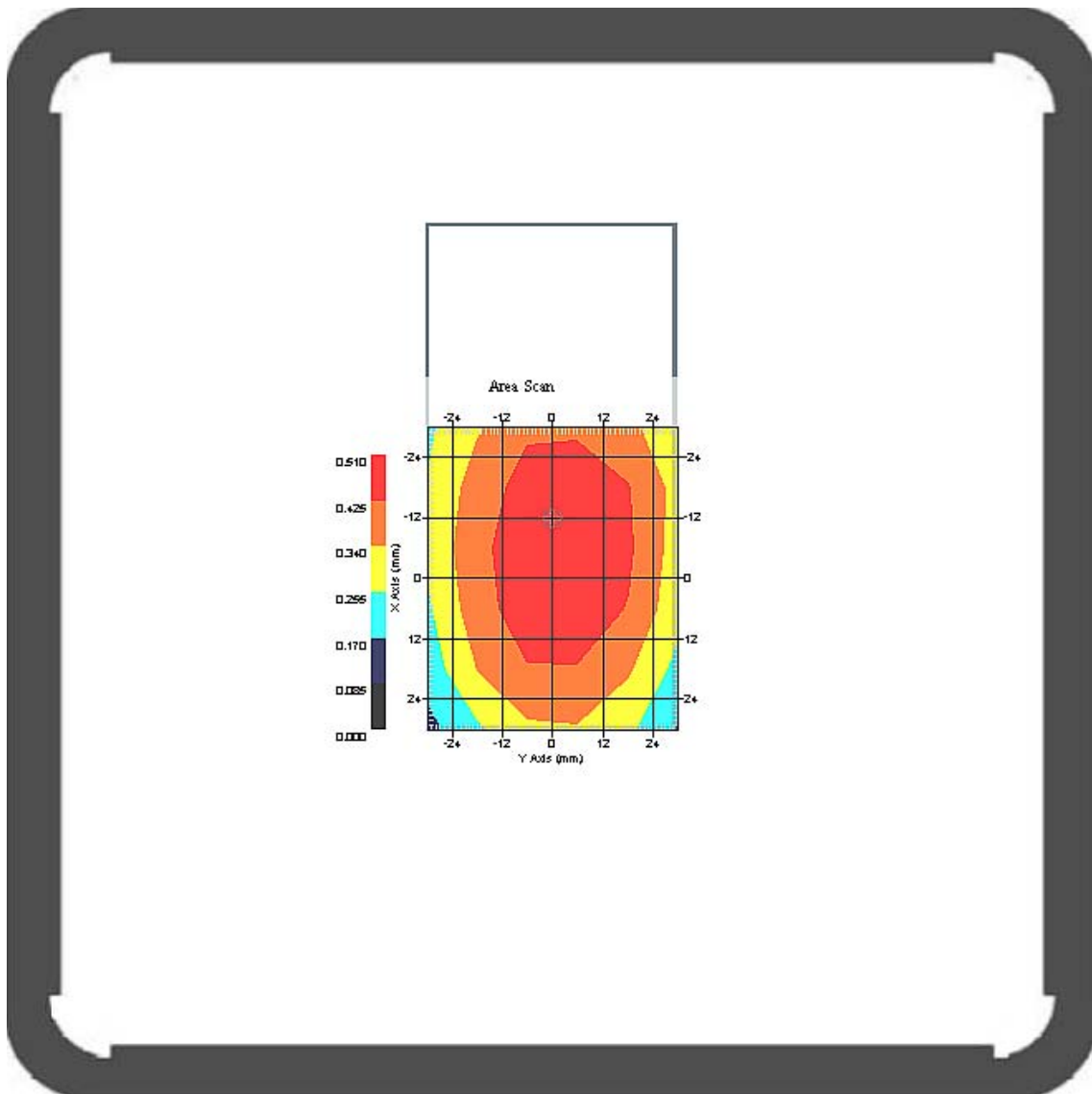
Probe Data

Name : Probe 265
Model : E020
Type : E-Field Triangle
Serial No. : 265
Last Calib. Date : 09-May-2008
Frequency : 835.00 MHz
Duty Cycle Factor: 1
Conversion Factor: 6.6
Probe Sensitivity: 1.20 1.20 1.20 $\mu\text{V}/(\text{V}/\text{m})^2$
Compression Point: 95.00 mV
Offset : 1.56 mm

Measurement Data

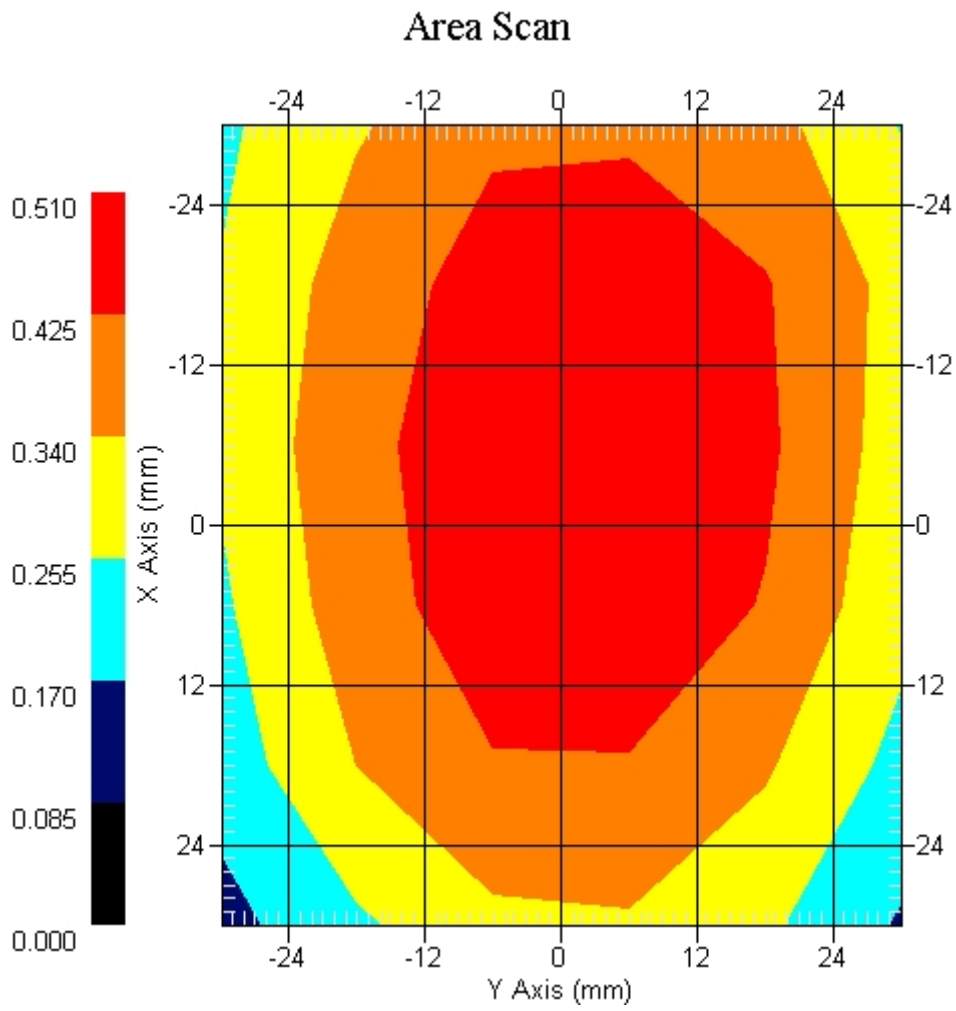
Crest Factor : 1
 Tissue Temp. : 21.50 °C
 Ambient Temp. : 22.30 °C
 Area Scan : 6x6x1 : Measurement x=12mm, y=12mm, z=4mm
 Zoom Scan : 5x5x8 : Measurement x=8mm, y=8mm, z=4mm
 Power Drift-Start : 0.502 W/kg
 Power Drift-Finish: 0.493 W/kg
 Power Drift (%) : -1.792

DUT Position : Touch
 Channel : 4132



1 gram SAR value : 0.493 W/kg
 10 gram SAR value : 0.356 W/kg
 Area Scan Peak SAR : 0.510 W/kg
 Zoom Scan Peak SAR : 0.636 W/kg

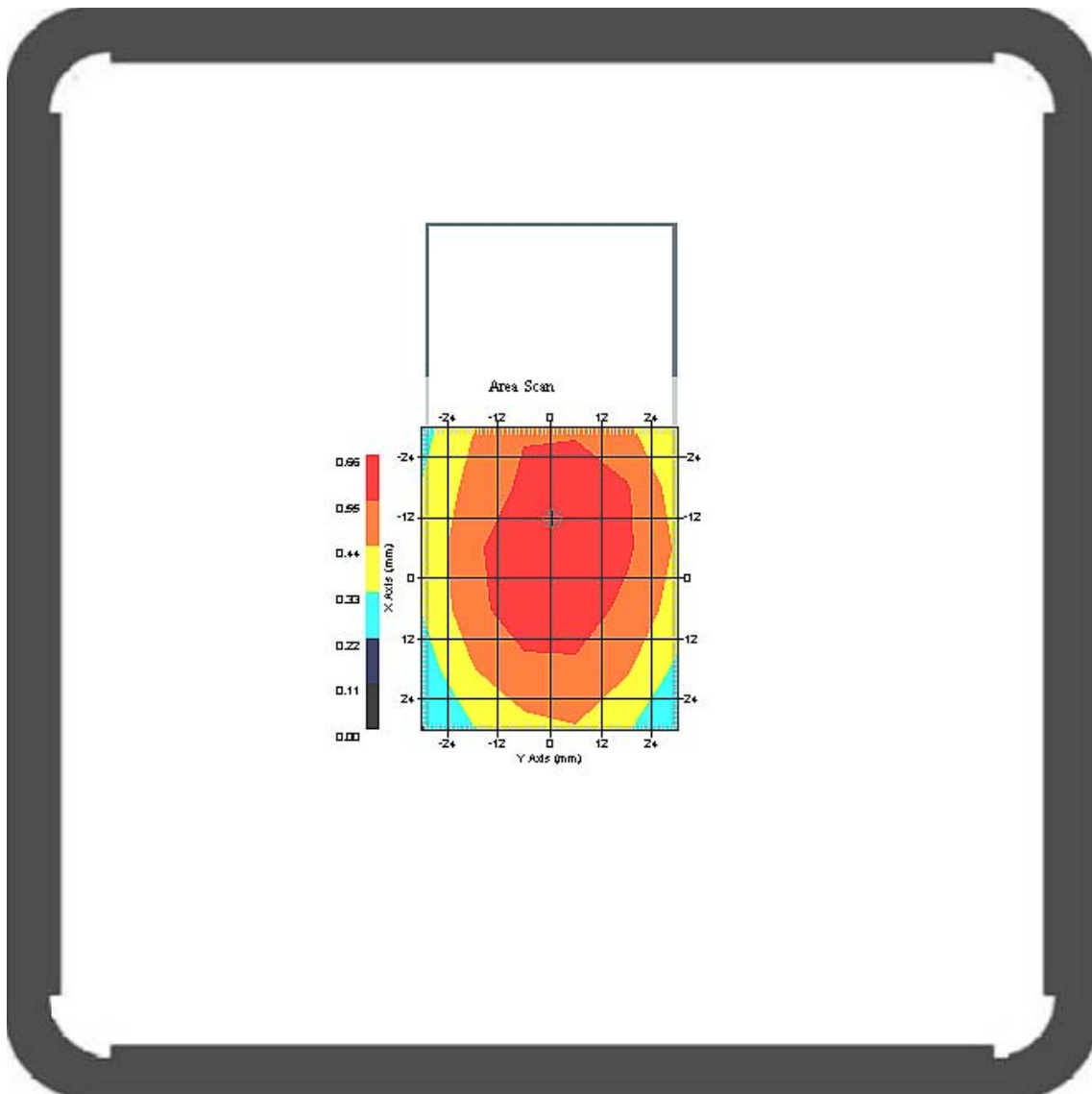
This is previous page plot (zoom in)



Measurement Data

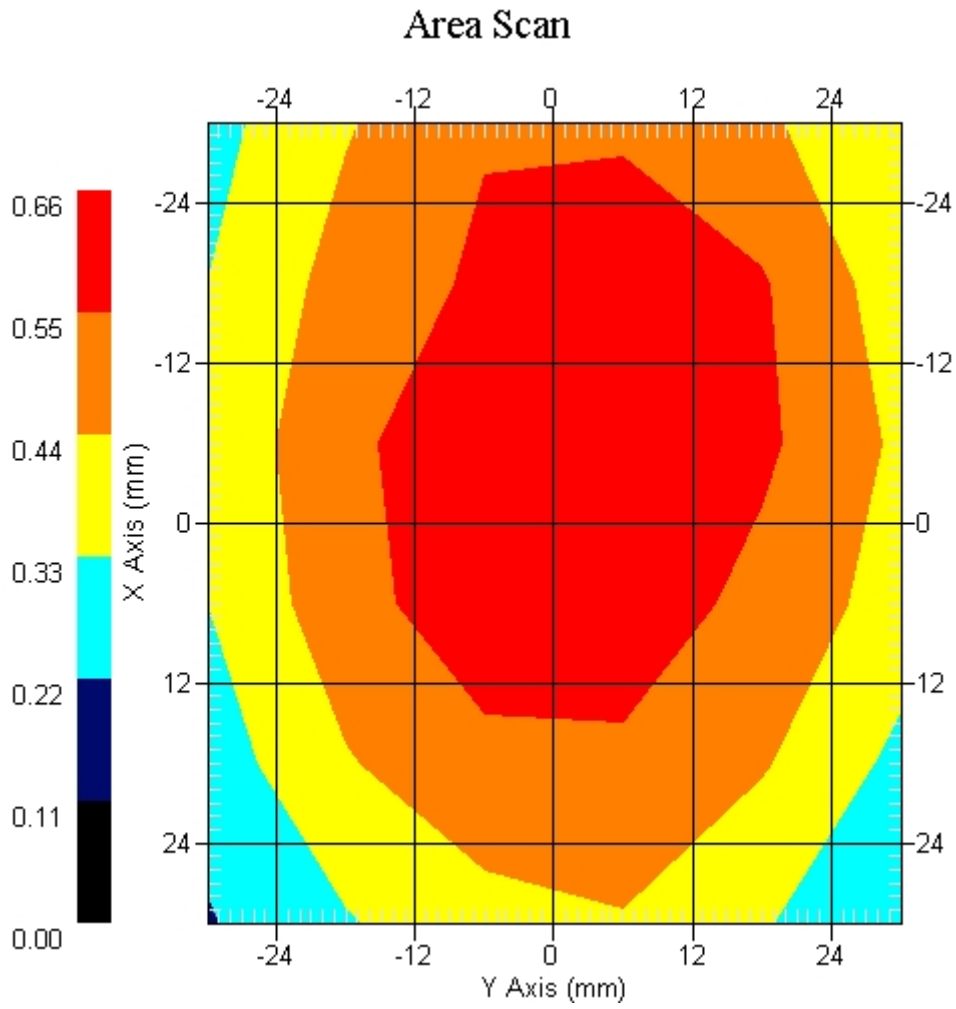
Crest Factor : 1
 Tissue Temp. : 21.50 °C
 Ambient Temp. : 22.30 °C
 Area Scan : 6x6x1 : Measurement x=12mm, y=12mm, z=4mm
 Zoom Scan : 5x5x8 : Measurement x=8mm, y=8mm, z=4mm
 Power Drift-Start : 0.616 W/kg
 Power Drift-Finish: 0.616 W/kg
 Power Drift (%) : 0.024

DUT Position : Touch
 Channel : 4183



1 gram SAR value : 0.641 W/kg
 10 gram SAR value : 0.365 W/kg
 Area Scan Peak SAR : 0.660 W/kg
 Zoom Scan Peak SAR : 0.801 W/kg

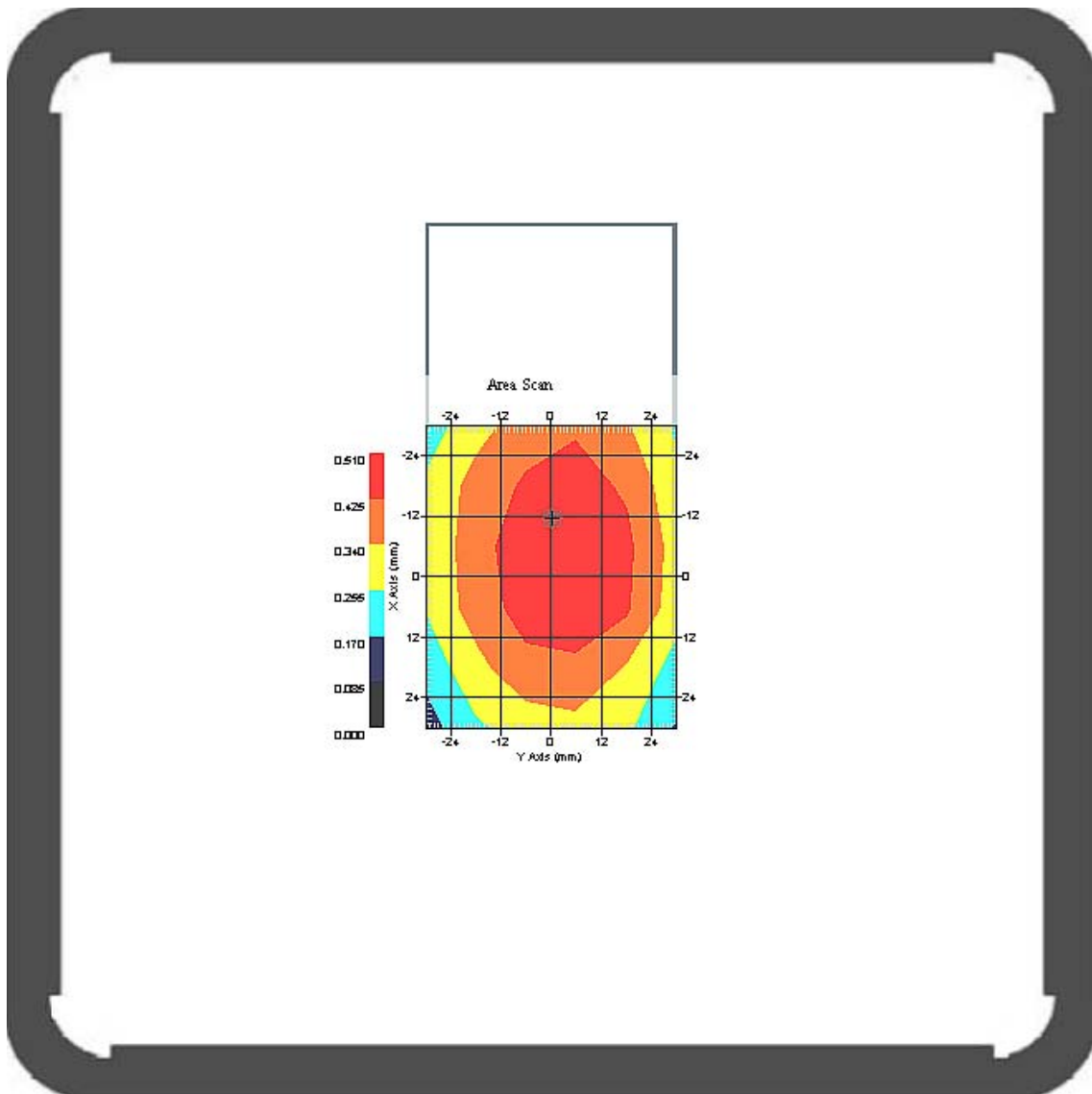
This is previous page plot (zoom in)



Measurement Data

Crest Factor : 1
 Tissue Temp. : 21.50 °C
 Ambient Temp. : 22.30 °C
 Area Scan : 6x6x1 : Measurement x=12mm, y=12mm, z=4mm
 Zoom Scan : 5x5x8 : Measurement x=8mm, y=8mm, z=4mm
 Power Drift-Start : 0.453 W/kg
 Power Drift-Finish: 0.453 W/kg
 Power Drift (%) : 0.926

DUT Position : Touch
 Channel : 4233



1 gram SAR value : 0.489 W/kg
 10 gram SAR value : 0.357 W/kg
 Area Scan Peak SAR : 0.510 W/kg
 Zoom Scan Peak SAR : 0.634 W/kg

This is previous page plot (zoom in)

