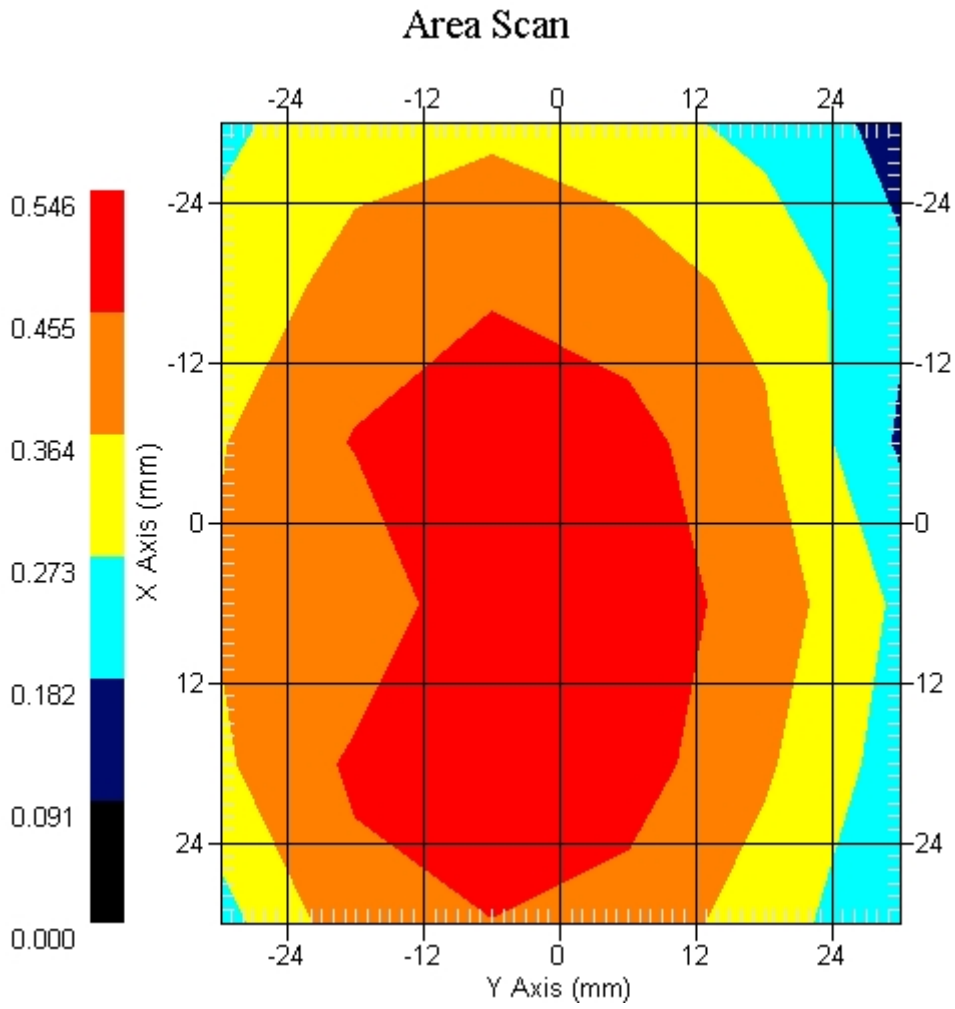


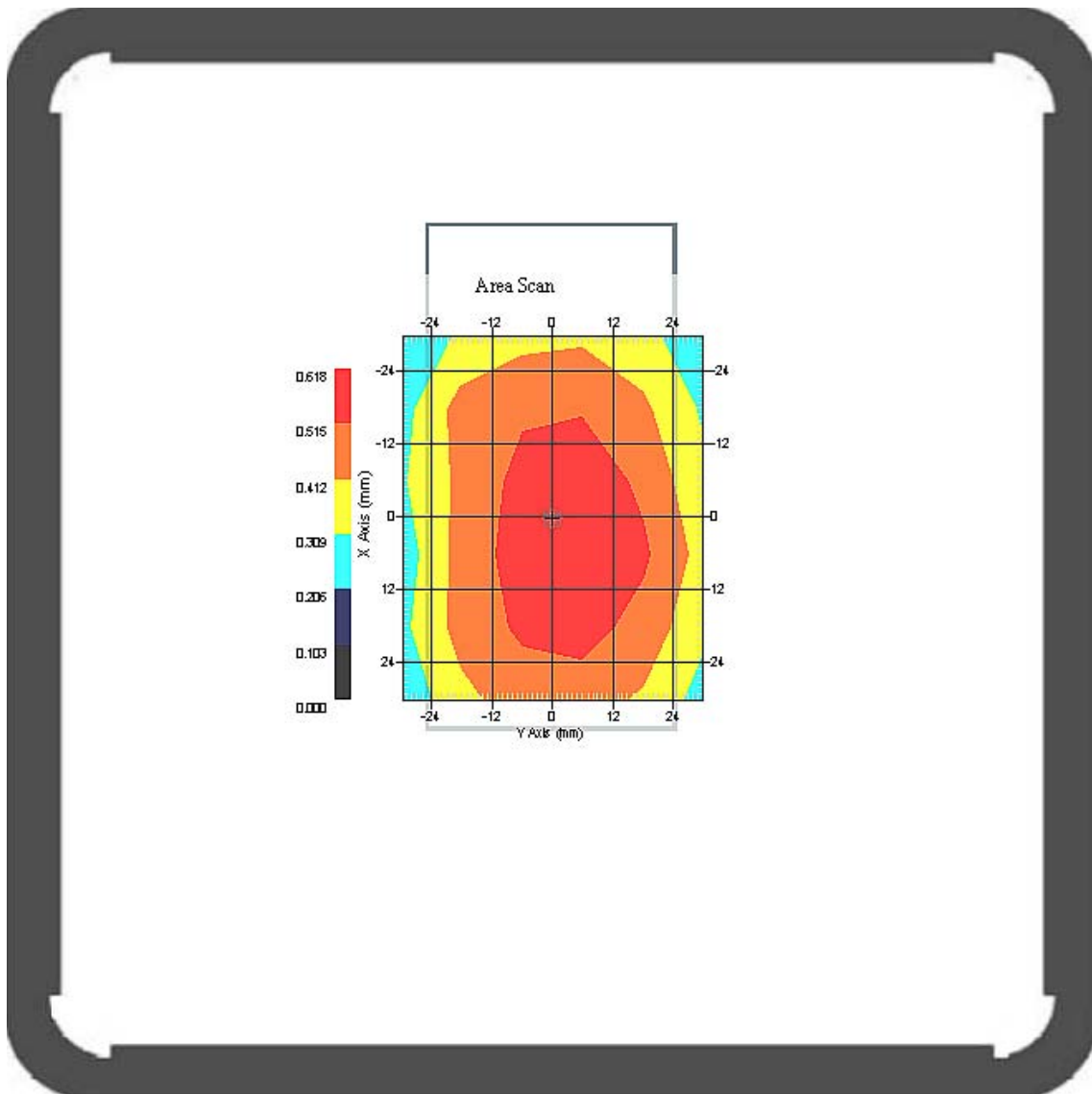
This is previous page plot (zoom in)



Measurement Data

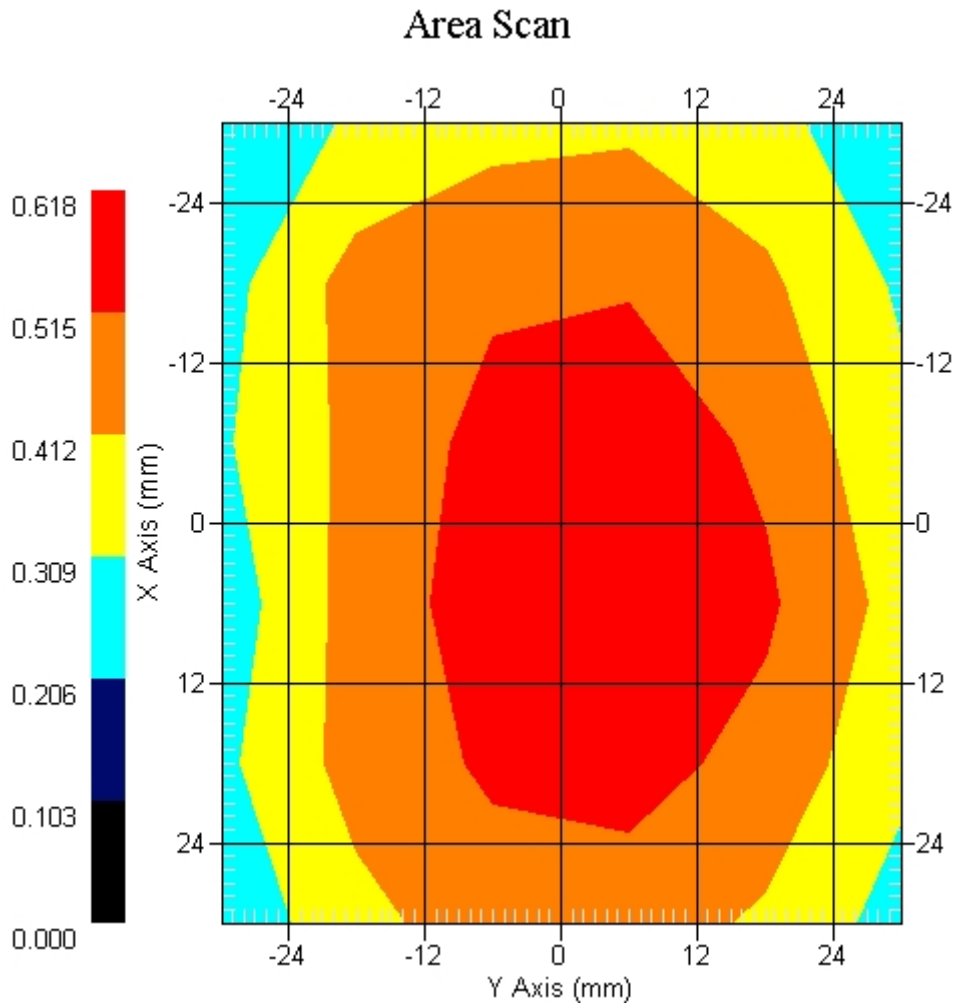
Crest Factor : 8
 Tissue Temp. : 21.60 °C
 Ambient Temp. : 22.30 °C
 Area Scan : 6x6x1 : Measurement x=12mm, y=12mm, z=4mm
 Zoom Scan : 5x5x8 : Measurement x=8mm, y=8mm, z=4mm
 Power Drift-Start : 0.597 W/kg
 Power Drift-Finish: 0.583 W/kg
 Power Drift (%) : -2.280

DUT Position : Touch
 Channel : 251



1 gram SAR value : 0.507 W/kg
 10 gram SAR value : 0.364 W/kg
 Area Scan Peak SAR : 0.615 W/kg
 Zoom Scan Peak SAR : 0.760 W/kg

This is previous page plot (zoom in)



ALSAS-10U VER 2.3.6 APREL Laboratories
SAR Test Report-GSM 850 GPRS 2 Slot

Report Date : 28-Feb-2009
Measurement Date : 28-Feb-2009

Product Data

Device Name : Mobile Phone
Type : Other
Model : M900
Frequency : 850.00 MHz
Max. Transmit Pwr : 2 W
Drift Time : 0 min(s)
Length : 119.2 mm
Width : 62.2 mm
Depth : 17.9mm
Antenna Type : Internal

Phantom Data

Type : Uni-Phantom
Size (mm) : 280 x 280 x 200
Location : Center

Tissue Data

Type : BODY
Serial No. : 322-B
Frequency : 835.00 MHz
Last Calib. Date : 28-Feb-2009
Temperature : 21.60 °C
Ambient Temp. : 22.30 °C
Humidity : 54.00 RH%
Epsilon : 55.94 F/m
Sigma : 0.98 S/m
Density : 1000.00 kg/cu. m

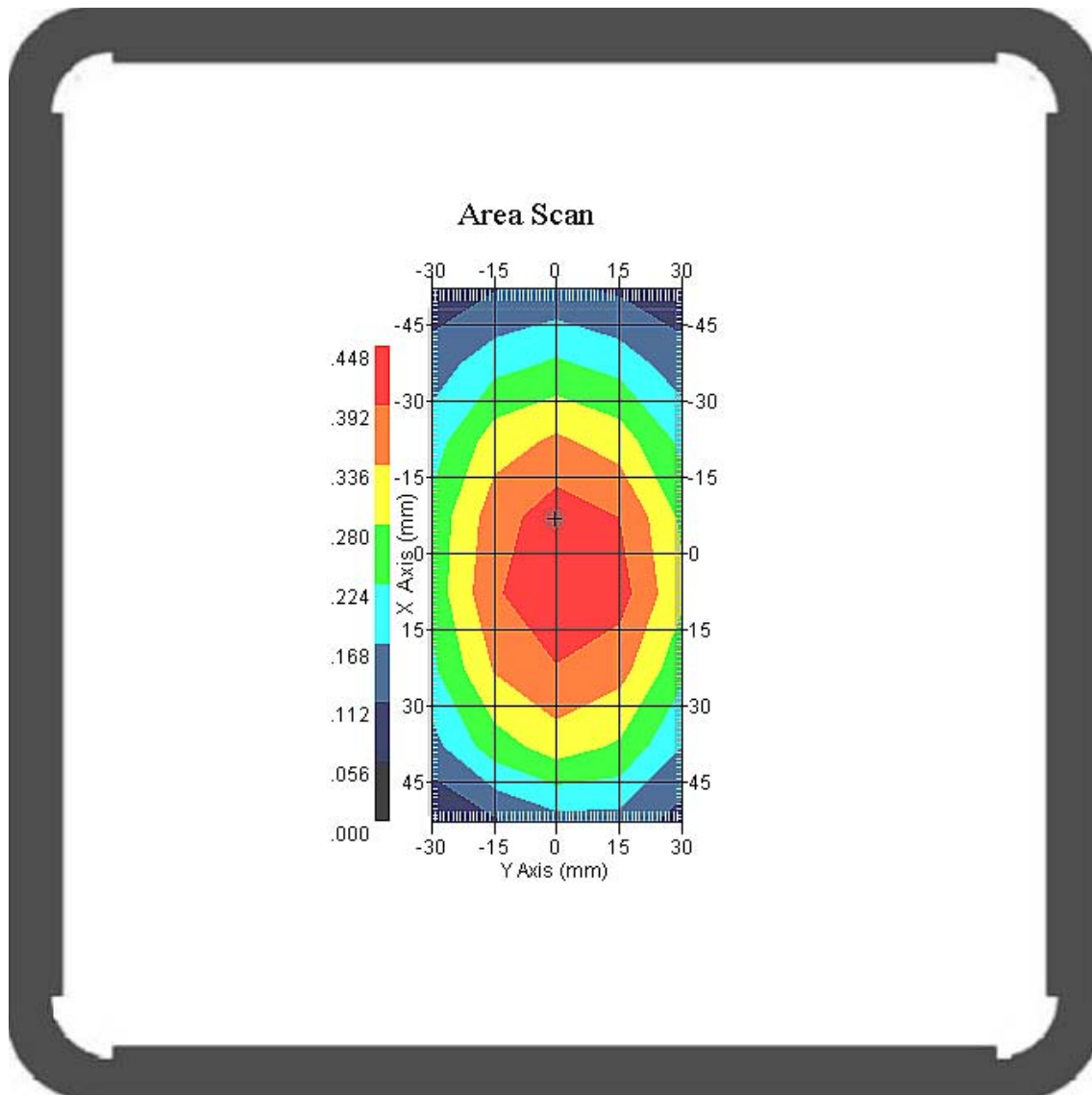
Probe Data

Name : Probe 265
Model : E020
Type : E-Field Triangle
Serial No. : 265
Last Calib. Date : 09-May-2008
Frequency : 835.00 MHz
Duty Cycle Factor: 4
Conversion Factor: 6.6
Probe Sensitivity: 1.20 1.20 1.20 $\mu\text{V}/(\text{V}/\text{m})^2$
Compression Point: 95.00 mV
Offset : 1.56 mm

Measurement Data

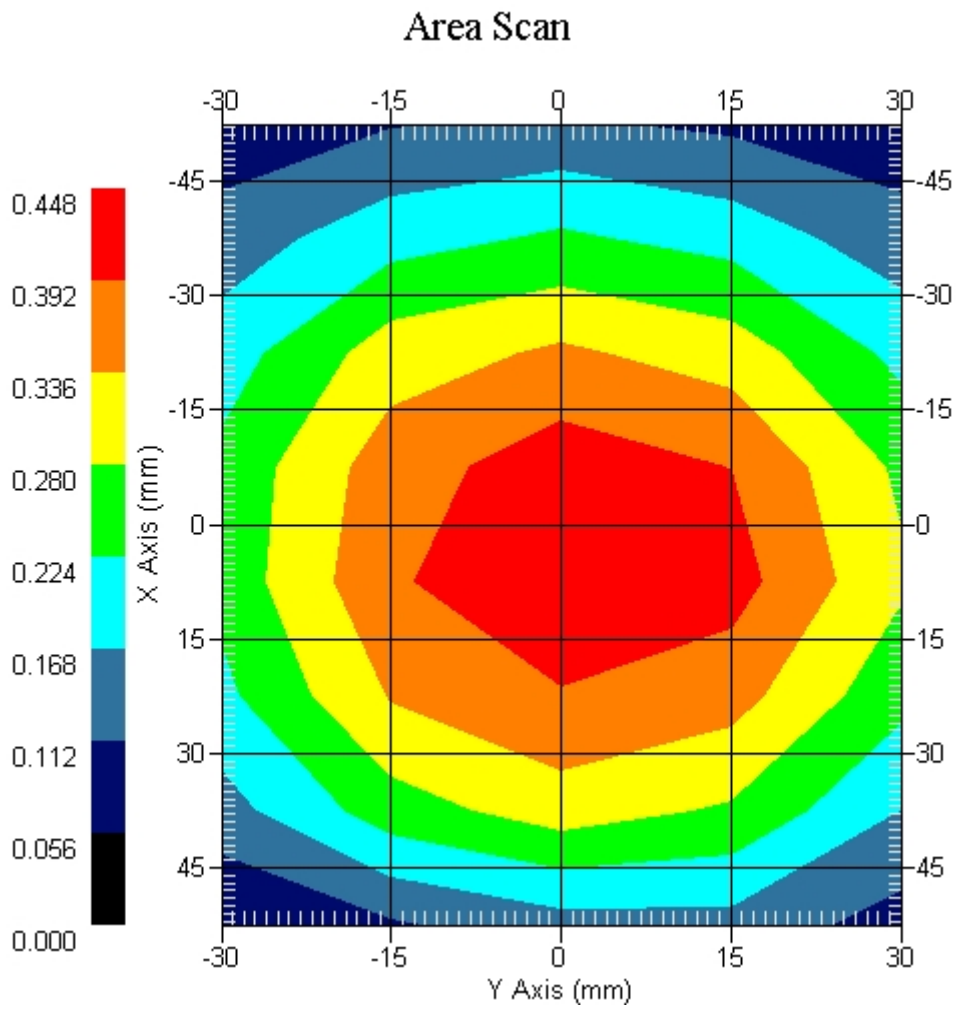
Crest Factor : 4
 Tissue Temp. : 21.60 °C
 Ambient Temp. : 22.30 °C
 Area Scan : 6x6x1 : Measurement x=12mm, y=12mm, z=4mm
 Zoom Scan : 5x5x8 : Measurement x=8mm, y=8mm, z=4mm
 Power Drift-Start : 0.381 W/kg
 Power Drift-Finish: 0.382 W/kg
 Power Drift (%) : 0.304

DUT Position : Touch
 Channel : 189



1 gram SAR value : 0.423 W/kg
 10 gram SAR value : 0.354 W/kg
 Area Scan Peak SAR : 0.446 W/kg
 Zoom Scan Peak SAR : 0.470 W/kg

This is previous page plot (zoom in)



ALSAS-10U VER 2.3.6 APREL Laboratories
SAR Test Report-GSM 850 GPRS 3 Slot

Report Date : 28-Feb-2009
Measurement Date : 28-Feb-2009

Product Data

Device Name : Mobile Phone
Type : Other
Model : M900
Frequency : 850.00 MHz
Max. Transmit Pwr : 2 W
Drift Time : 0 min(s)
Length : 119.2 mm
Width : 62.2 mm
Depth : 17.9mm
Antenna Type : Internal

Phantom Data

Type : Uni-Phantom
Size (mm) : 280 x 280 x 200
Location : Center

Tissue Data

Type : BODY
Serial No. : 322-B
Frequency : 835.00 MHz
Last Calib. Date : 28-Feb-2009
Temperature : 21.60 °C
Ambient Temp. : 22.30 °C
Humidity : 54.00 RH%
Epsilon : 55.94 F/m
Sigma : 0.98 S/m
Density : 1000.00 kg/cu. m

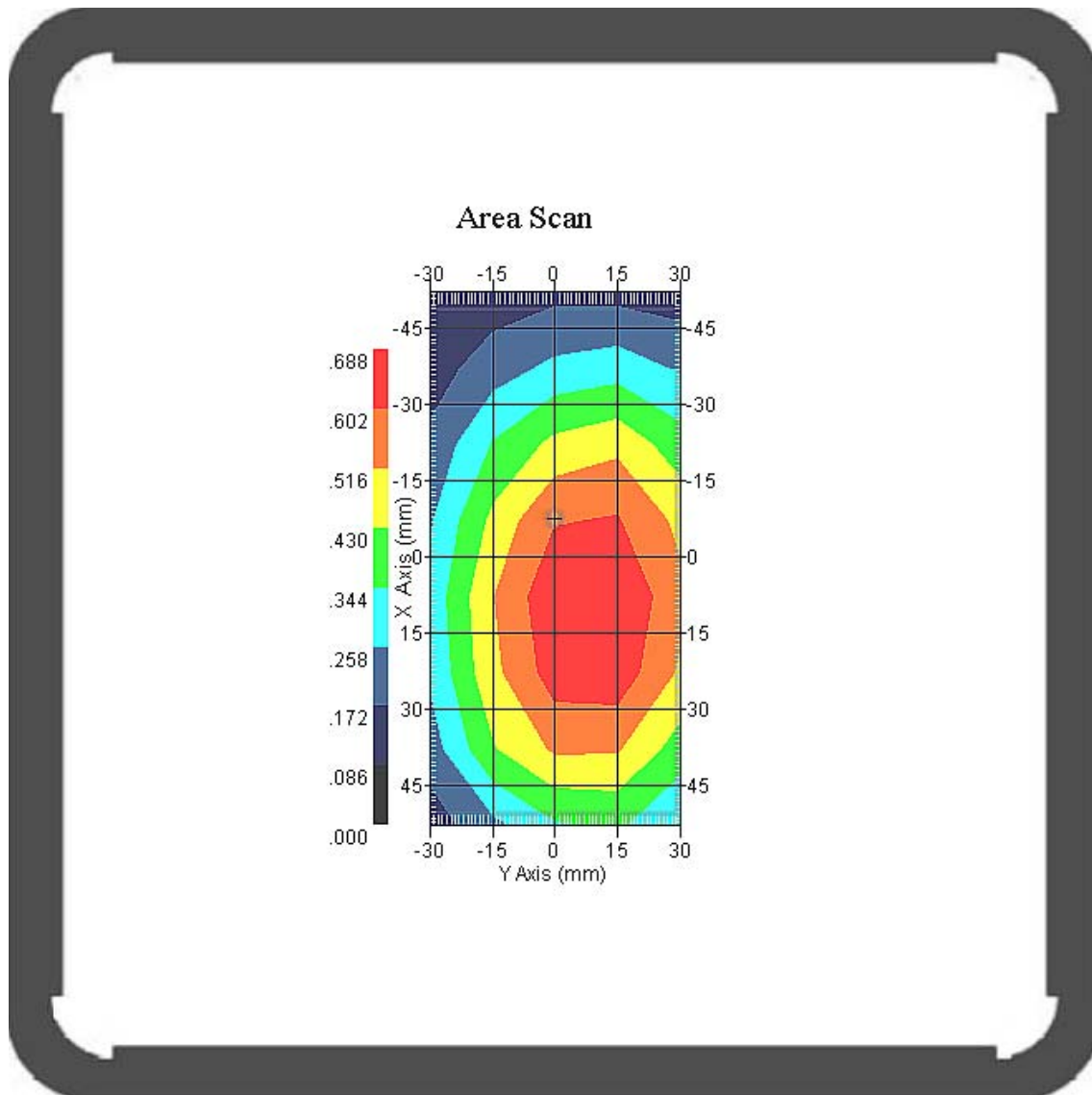
Probe Data

Name : Probe 265
Model : E020
Type : E-Field Triangle
Serial No. : 265
Last Calib. Date : 09-May-2008
Frequency : 835.00 MHz
Duty Cycle Factor: 2.66
Conversion Factor: 6.6
Probe Sensitivity: 1.20 1.20 1.20 $\mu\text{V}/(\text{V}/\text{m})^2$
Compression Point: 95.00 mV
Offset : 1.56 mm

Measurement Data

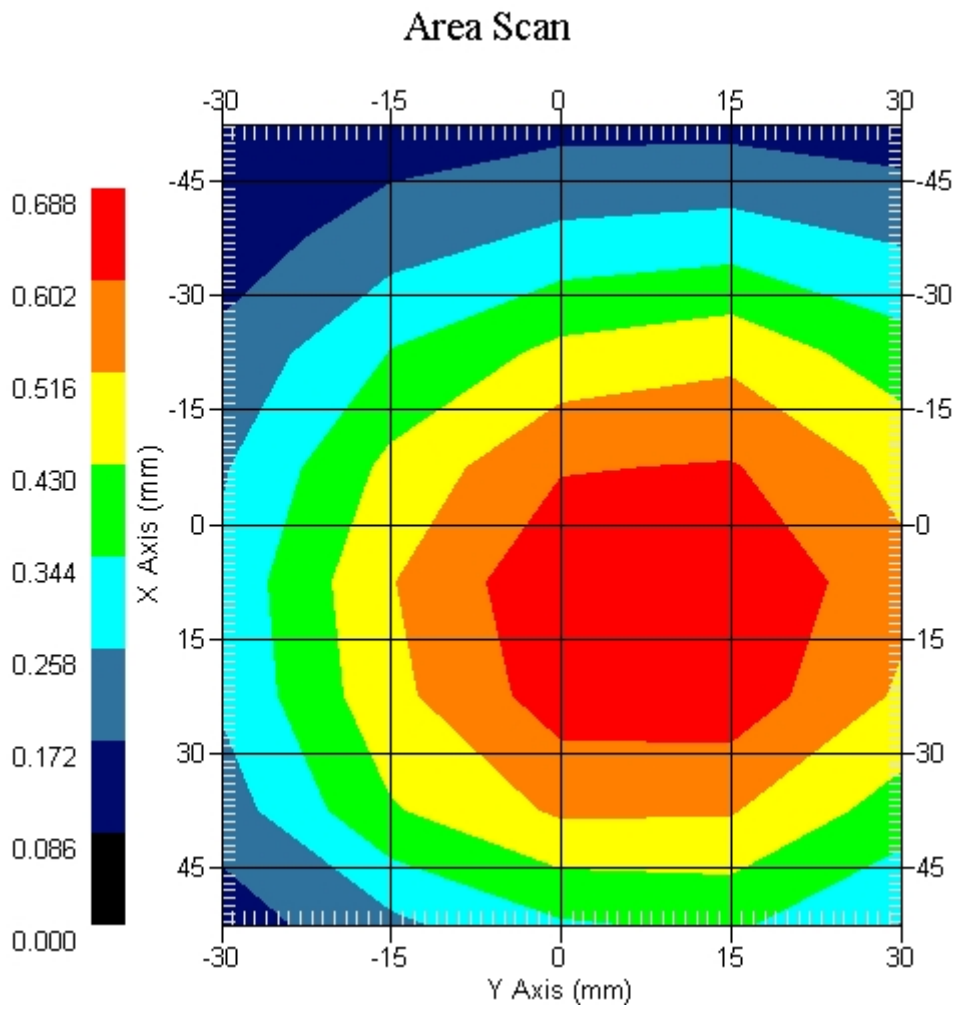
Crest Factor : 2.66
 Tissue Temp. : 21.60 °C
 Ambient Temp. : 22.30 °C
 Area Scan : 6x6x1 : Measurement x=12mm, y=12mm, z=4mm
 Zoom Scan : 5x5x8 : Measurement x=8mm, y=8mm, z=4mm
 Power Drift-Start : 0.527 W/kg
 Power Drift-Finish: 0.514 W/kg
 Power Drift (%) : -2.433

DUT Position : Touch
 Channel : 128



1 gram SAR value : 0.633 W/kg
 10 gram SAR value : 0.465 W/kg
 Area Scan Peak SAR : 0.684 W/kg
 Zoom Scan Peak SAR : 0.860 W/kg

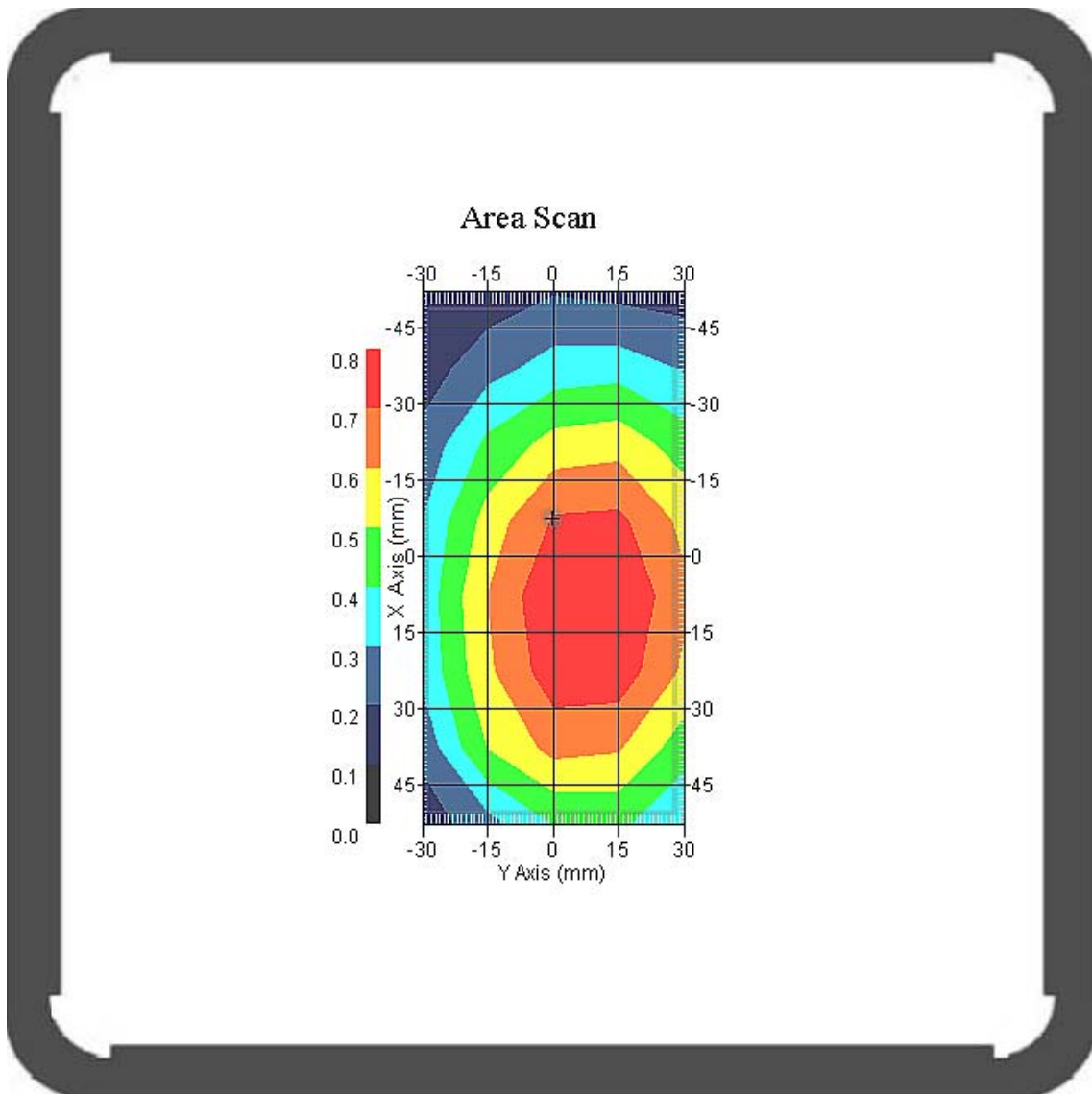
This is previous page plot (zoom in)



Measurement Data

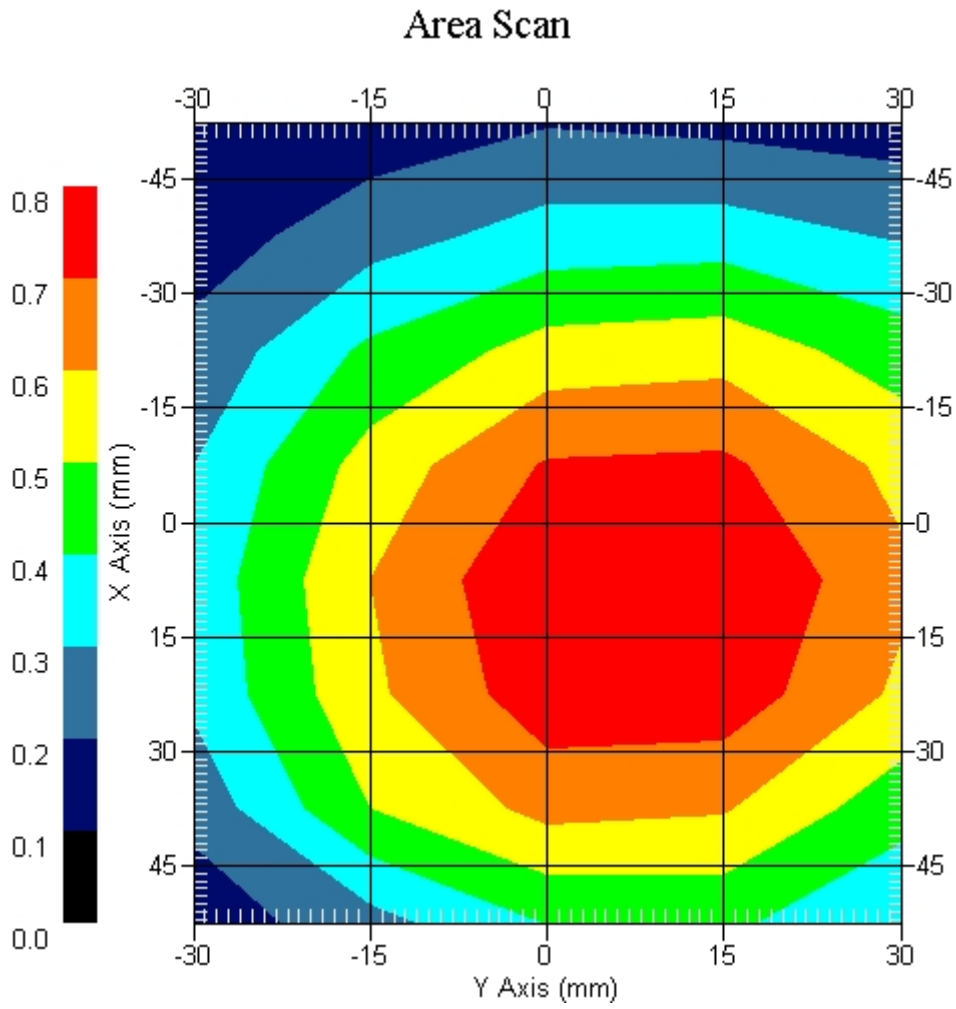
Crest Factor : 2.66
 Tissue Temp. : 21.60 °C
 Ambient Temp. : 22.30 °C
 Area Scan : 6x6x1 : Measurement x=12mm, y=12mm, z=4mm
 Zoom Scan : 5x5x8 : Measurement x=8mm, y=8mm, z=4mm
 Power Drift-Start : 0.589 W/kg
 Power Drift-Finish: 0.618 W/kg
 Power Drift (%) : 4.988

DUT Position : Touch
 Channel : 189



1 gram SAR value : 0.752 W/kg
 10 gram SAR value : 0.583 W/kg
 Area Scan Peak SAR : 0.800 W/kg
 Zoom Scan Peak SAR : 0.950 W/kg

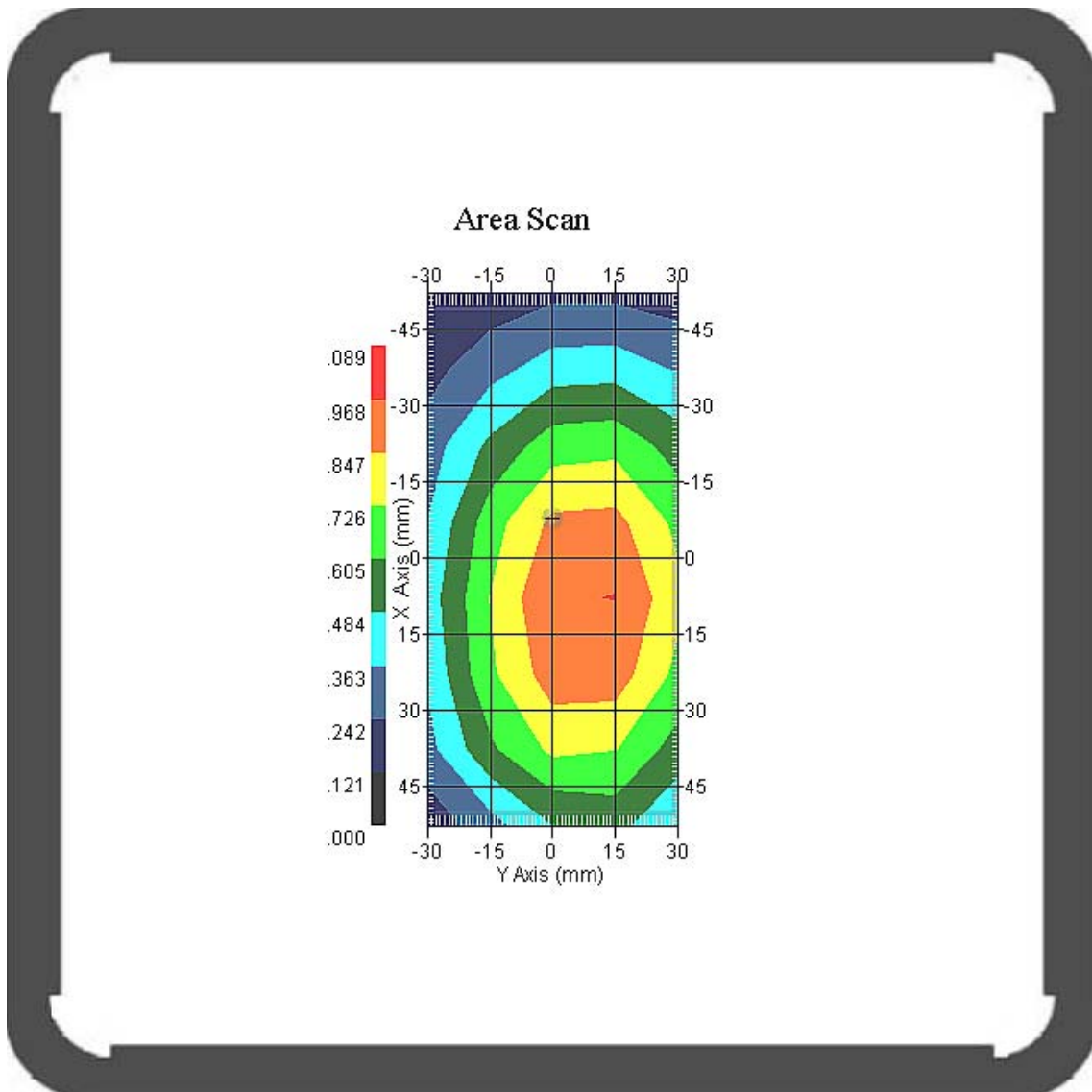
This is previous page plot (zoom in)



Measurement Data

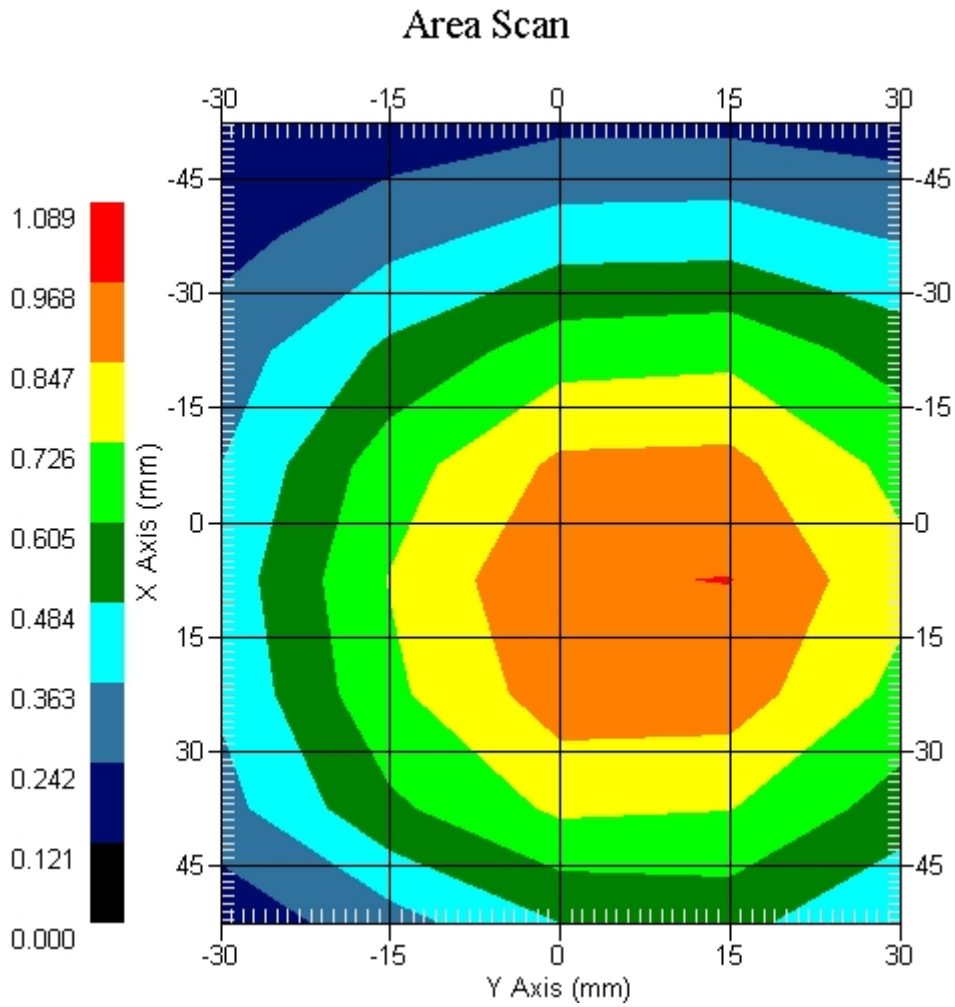
Crest Factor : 2.66
 Tissue Temp. : 21.60 °C
 Ambient Temp. : 22.30 °C
 Area Scan : 6x6x1 : Measurement x=12mm, y=12mm, z=4mm
 Zoom Scan : 5x5x8 : Measurement x=8mm, y=8mm, z=4mm
 Power Drift-Start : 0.770 W/kg
 Power Drift-Finish: 0.753 W/kg
 Power Drift (%) : -2.164

DUT Position : Touch
 Channel : 251



1 gram SAR value : 0.923 W/kg
 10 gram SAR value : 0.745 W/kg
 Area Scan Peak SAR : 0.970 W/kg
 Zoom Scan Peak SAR : 1.184 W/kg

This is previous page plot (zoom in)



ALSAS-10U VER 2.3.6 APREL Laboratories
SAR Test Report-GSM 850 EGPRS 3 Slot

Report Date : 28-Feb-2009
Measurement Date : 28-Feb-2009

Product Data

Device Name : Mobile Phone
Type : Std Form Cell Phone
Model : M900
Frequency : 850.00 MHz
Max. Transmit Pwr : 2 W
Drift Time : 0 min(s)
Length : 119.2 mm
Width : 62.2 mm
Depth : 17.9mm
Antenna Type : Internal

Phantom Data

Type : Uni-Phantom
Size (mm) : 280 x 280 x 200
Location : Center

Tissue Data

Type : BODY
Serial No. : 322-B
Frequency : 835.00 MHz
Last Calib. Date : 28-Feb-2009
Temperature : 21.60 °C
Ambient Temp. : 22.30 °C
Humidity : 54.00 RH%
Epsilon : 55.94 F/m
Sigma : 0.98 S/m
Density : 1000.00 kg/cu. m

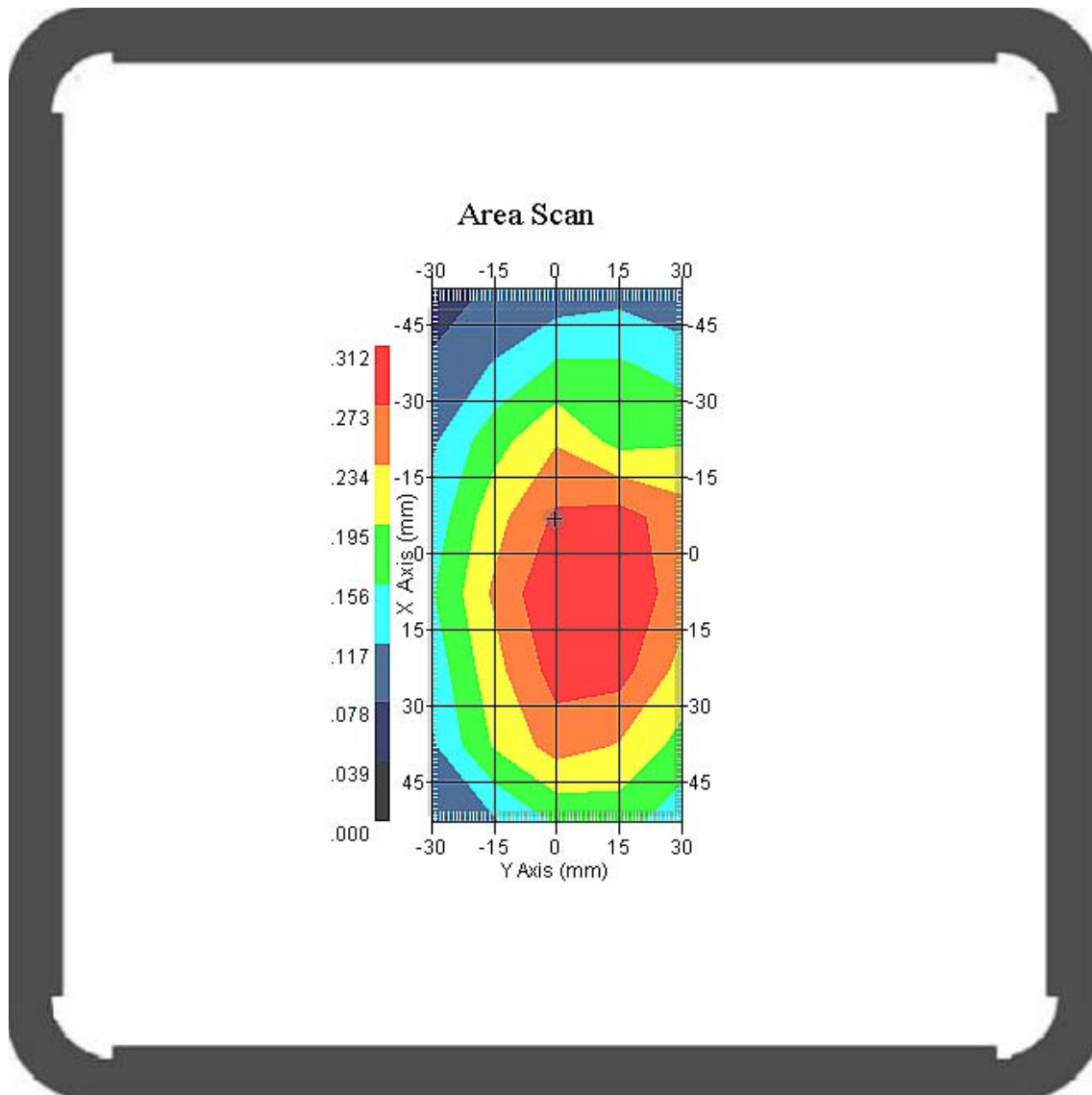
Probe Data

Name : Probe 265
Model : E020
Type : E-Field Triangle
Serial No. : 265
Last Calib. Date : 09-May-2008
Frequency : 835.00 MHz
Duty Cycle Factor: 4
Conversion Factor: 6.6
Probe Sensitivity: 1.20 1.20 1.20 $\mu\text{V}/(\text{V}/\text{m})^2$
Compression Point: 95.00 mV
Offset : 1.56 mm

Measurement Data

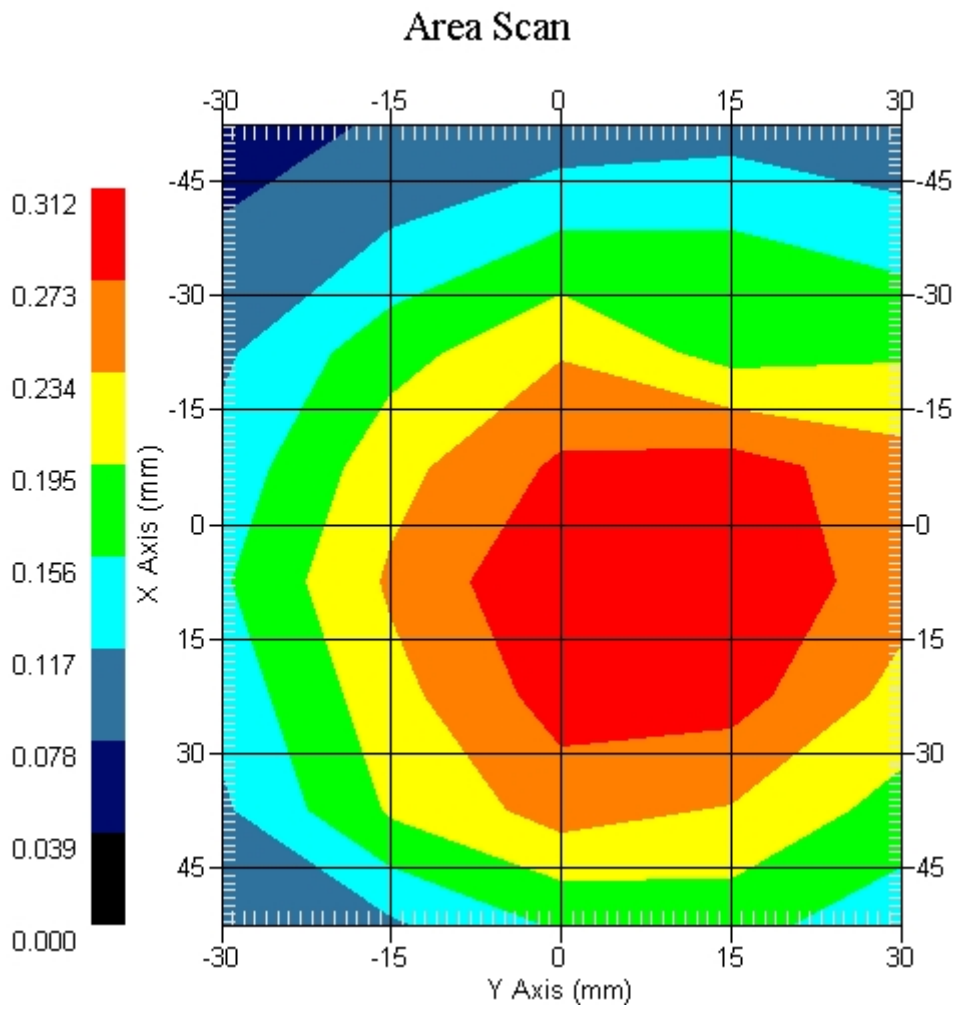
Crest Factor : 4
 Tissue Temp. : 21.50 °C
 Ambient Temp. : 22.30 °C
 Area Scan : 6x6x1 : Measurement x=12mm, y=12mm, z=4mm
 Zoom Scan : 5x5x8 : Measurement x=8mm, y=8mm, z=4mm
 Power Drift-Start : 0.262 W/kg
 Power Drift-Finish: 0.255 W/kg
 Power Drift (%) : -2.580

DUT Position : Touch
 Channel : 251



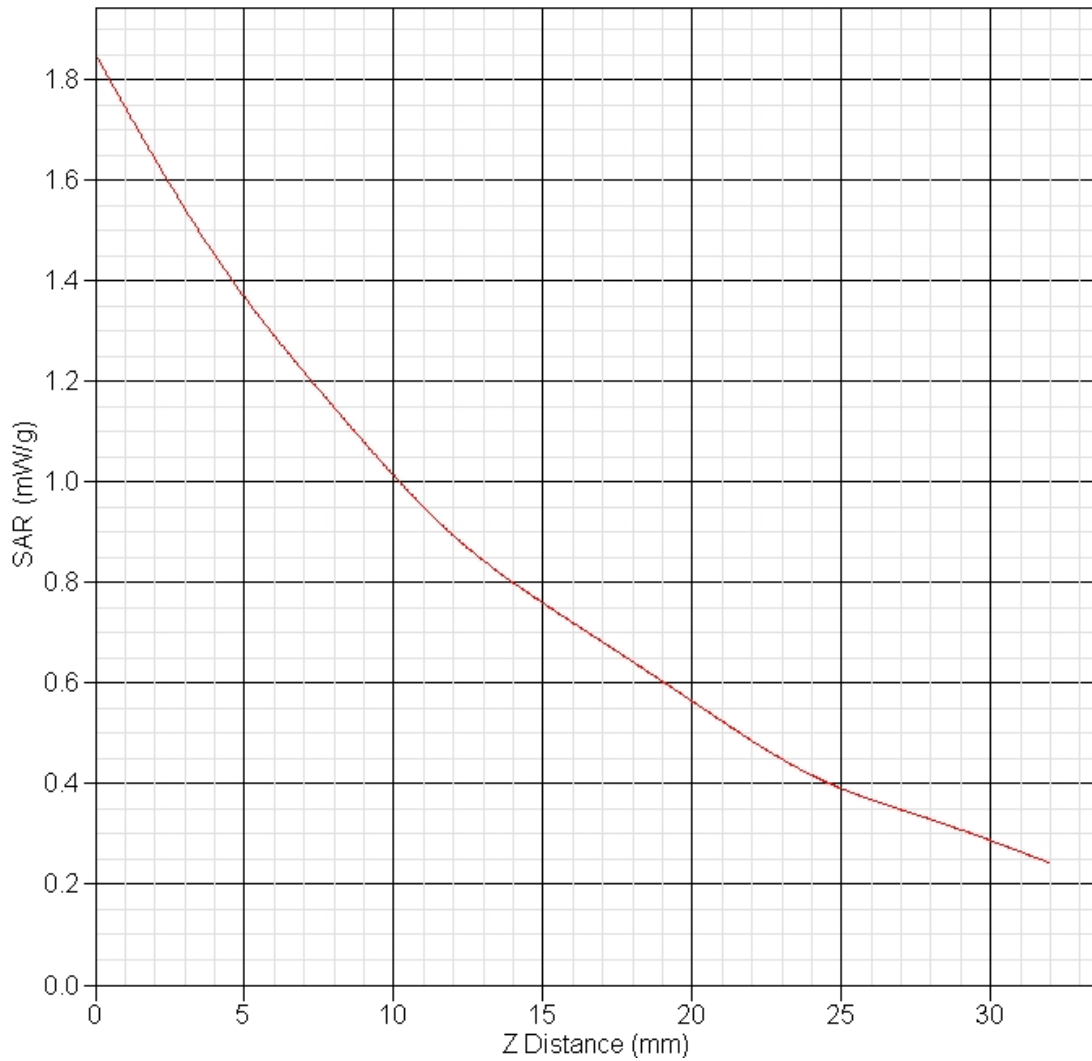
1 gram SAR value : 0.255 W/kg
 10 gram SAR value : 0.124 W/kg
 Area Scan Peak SAR : 0.310 W/kg
 Zoom Scan Peak SAR : 0.524 W/kg

This is previous page plot (zoom in)



GSM 850 GPRS 2 Slot EUT Body-worn, Z-Axis plot
Channel: 251

SAR-Z Axis
at Hotspot x:27.97 y:-6.01



SAR measurement Data

ALSAS-10U VER 2.3.6 APREL Laboratories

SAR Test Report-PCS 1900

Report Date : 02-Mar-2009
Measurement Date : 02-Mar-2009

Product Data

Device Name : Mobile Phone
Type : Std Form Cell Phone
Model : M900
Frequency : 1900.00 MHz
Max. Transmit Pwr : 1 W
Drift Time : 0 min(s)
Length : 119.2 mm
Width : 62.2 mm
Depth : 17.9 mm
Antenna Type : Internal

Phantom Data

Type : SAM-Left
Size (mm) : 280 x 280 x 280
Location : Left

Tissue Data

Type : HEAD
Serial No. : 324-H
Frequency : 1900.00 MHz
Last Calib. Date : 02-Mar-2009
Temperature : 21.20 °C
Ambient Temp. : 22.00 °C
Humidity : 51.00 RH%
Epsilon : 40.03 F/m
Sigma : 1.44 S/m
Density : 1000.00 kg/cu. m

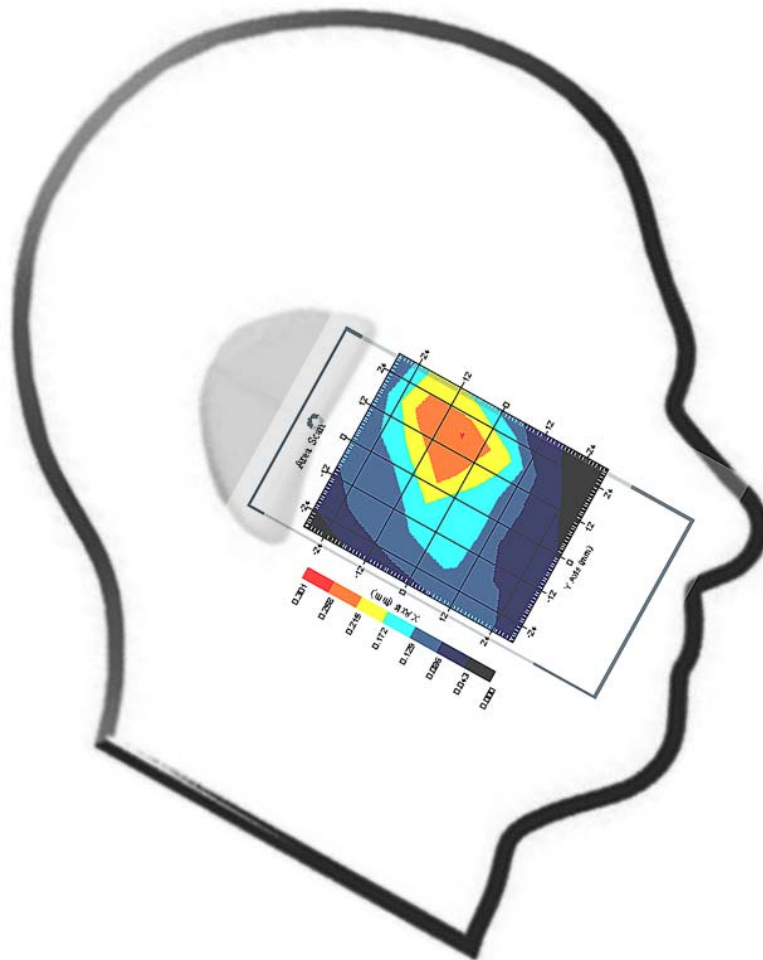
Probe Data

Name : Probe 265
Model : E020
Type : E-Field Triangle
Serial No. : 265
Last Calib. Date : 09-May-2008
Frequency : 1900.00 MHz
Duty Cycle Factor: 8
Conversion Factor: 4.51
Probe Sensitivity: 1.20 1.20 1.20 $\mu\text{V}/(\text{V}/\text{m})^2$
Compression Point: 95.00 mV
Offset : 1.56 mm

Measurement Data

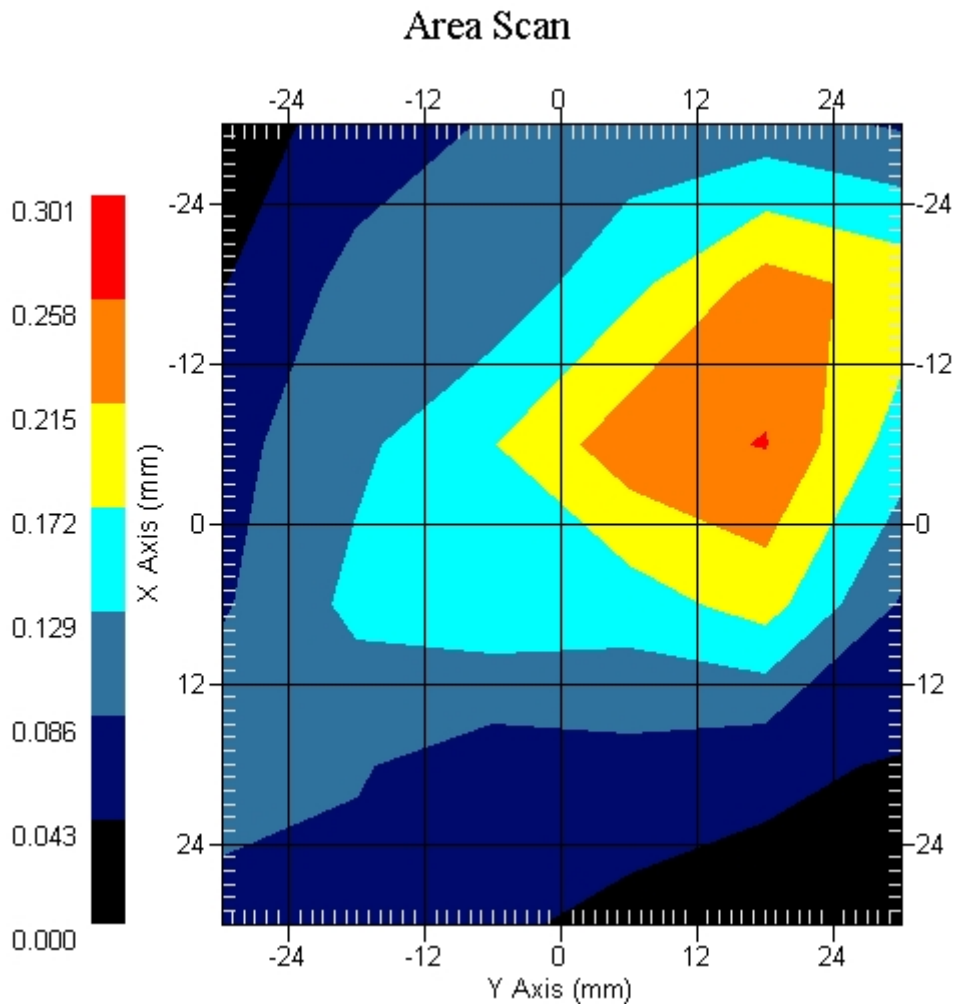
Crest Factor : 8
Tissue Temp. : 21.20 °C
Ambient Temp. : 22.00 °C
Area Scan : 6x6x1 : Measurement x=12mm, y=12mm, z=4mm
Zoom Scan : 5x5x8 : Measurement x=8mm, y=8mm, z=4mm
Power Drift-Start : 0.073 W/kg
Power Drift-Finish: 0.071 W/kg
Power Drift (%) : -4.109

DUT Position : Touch
Channel : 512



1 gram SAR value : 0.206 W/kg
10 gram SAR value : 0.181 W/kg
Area Scan Peak SAR : 0.260 W/kg
Zoom Scan Peak SAR : 0.390 W/kg

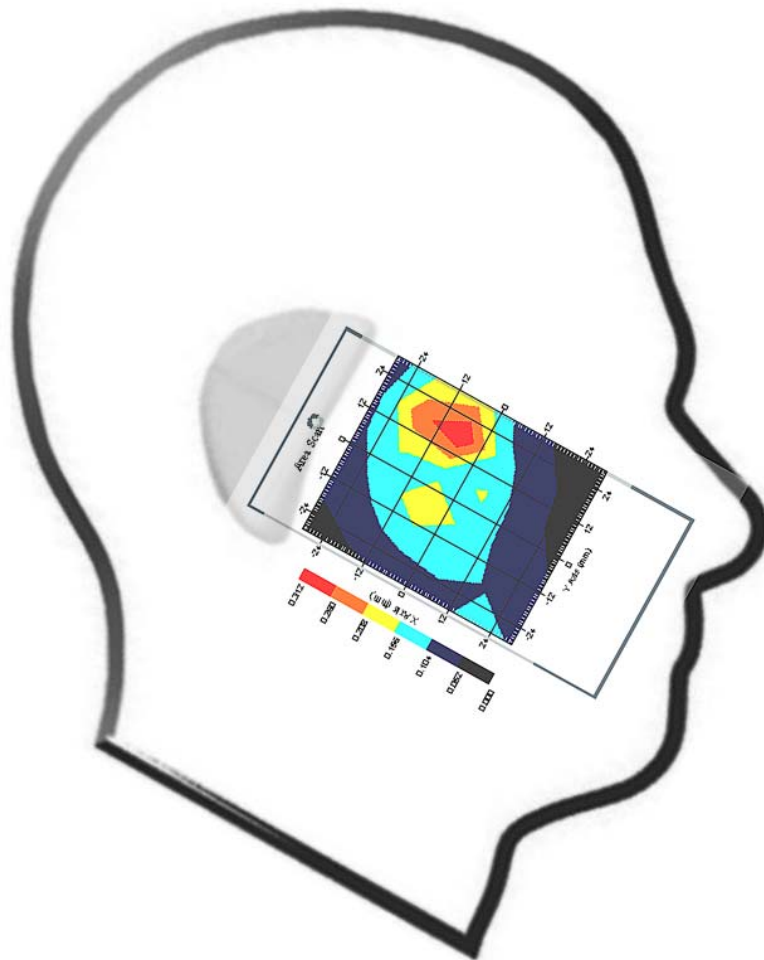
This is previous page plot (zoom in)



Measurement Data

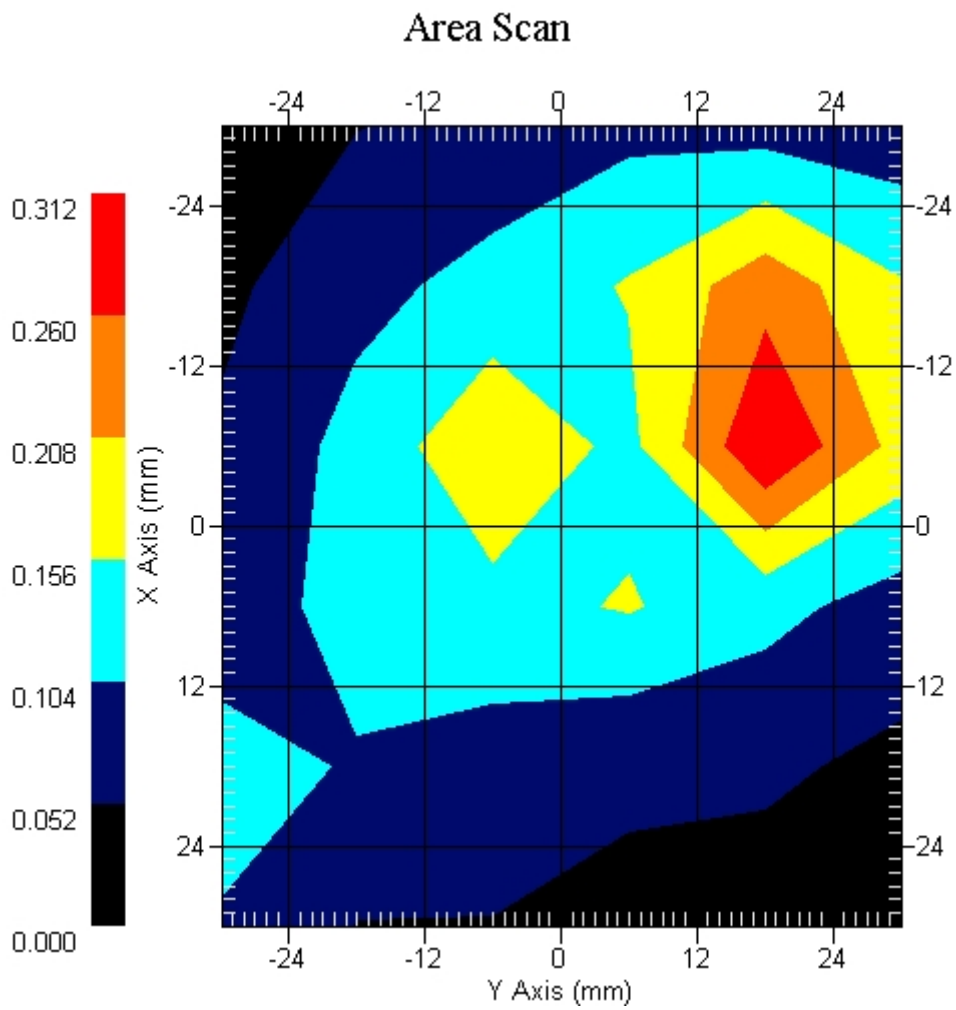
Crest Factor : 8
Tissue Temp. : 21.20 °C
Ambient Temp. : 22.00 °C
Area Scan : 6x6x1 : Measurement x=12mm, y=12mm, z=4mm
Zoom Scan : 5x5x8 : Measurement x=8mm, y=8mm, z=4mm
Power Drift-Start : 0.058 W/kg
Power Drift-Finish: 0.058 W/kg
Power Drift (%) : 0.254

DUT Position : Touch
Channel : 661



1 gram SAR value : 0.289 W/kg
10 gram SAR value : 0.210 W/kg
Area Scan Peak SAR : 0.310 W/kg
Zoom Scan Peak SAR : 0.440 W/kg

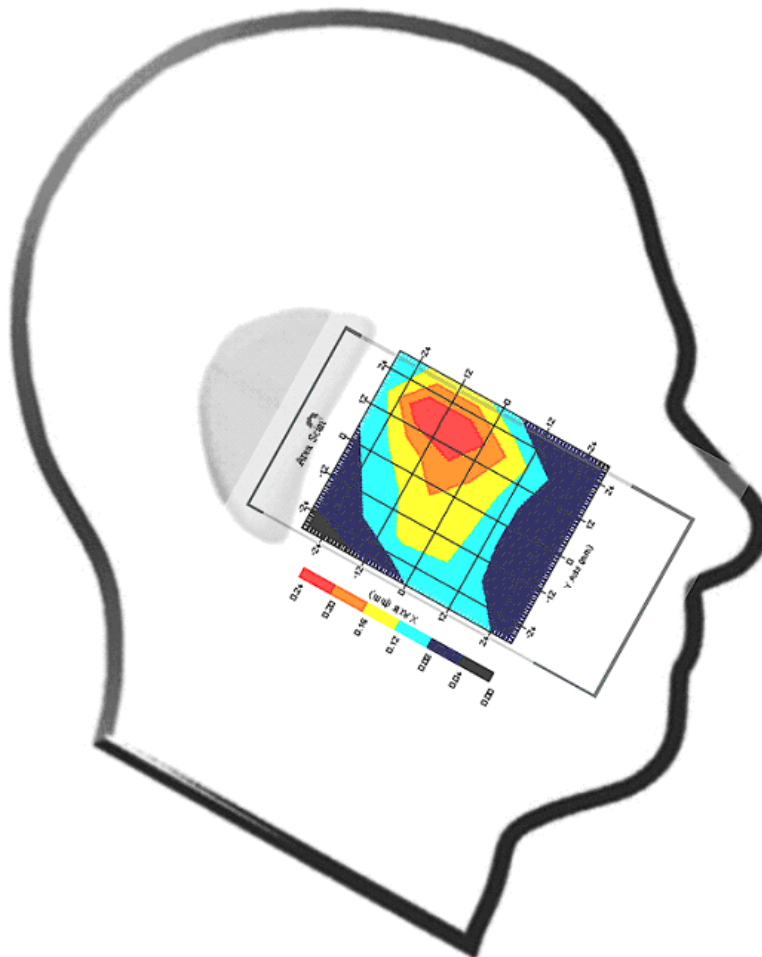
This is previous page plot (zoom in)



Measurement Data

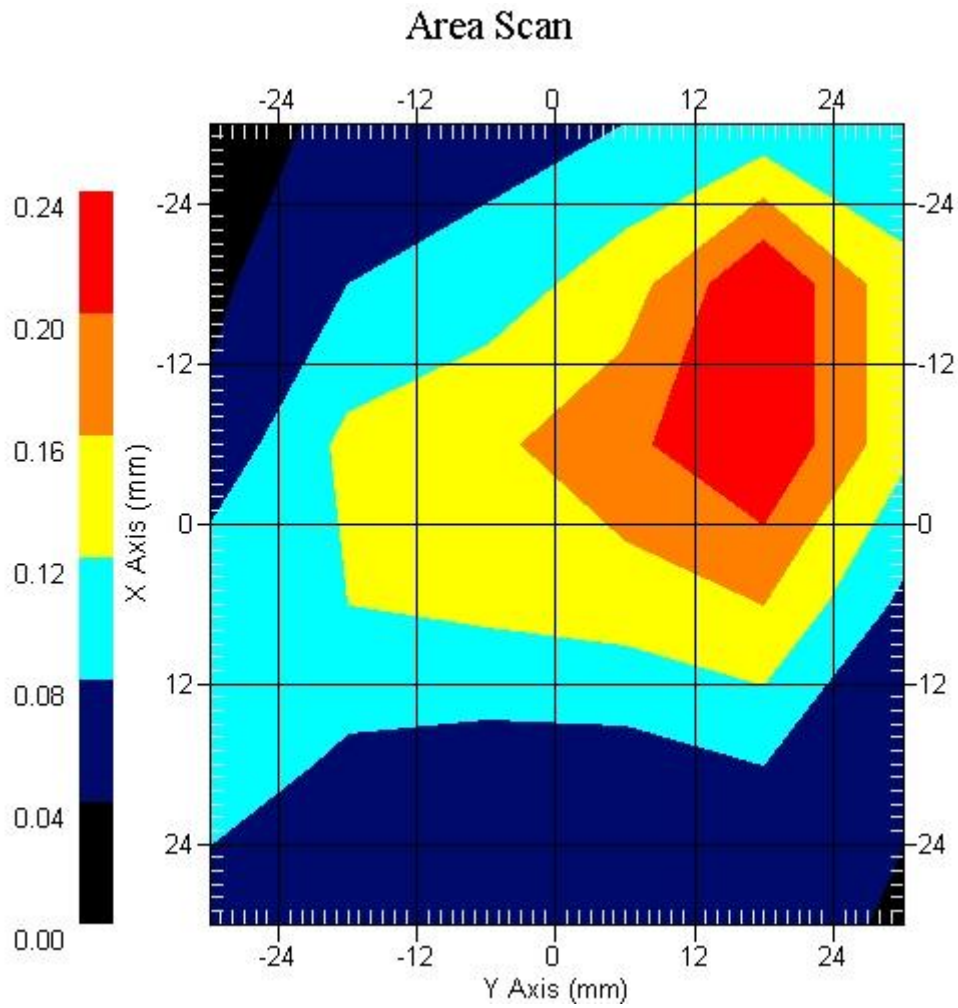
Crest Factor : 8
Tissue Temp. : 21.20 °C
Ambient Temp. : 22.00 °C
Area Scan : 6x6x1 : Measurement x=12mm, y=12mm, z=4mm
Zoom Scan : 5x5x8 : Measurement x=8mm, y=8mm, z=4mm
Power Drift-Start : 0.044 W/kg
Power Drift-Finish: 0.044 W/kg
Power Drift (%) : - 0.829

DUT Position : Touch
Channel : 810



1 gram SAR value : 0.221 W/kg
10 gram SAR value : 0.153 W/kg
Area Scan Peak SAR : 0.240 W/kg
Zoom Scan Peak SAR : 0.350 W/kg

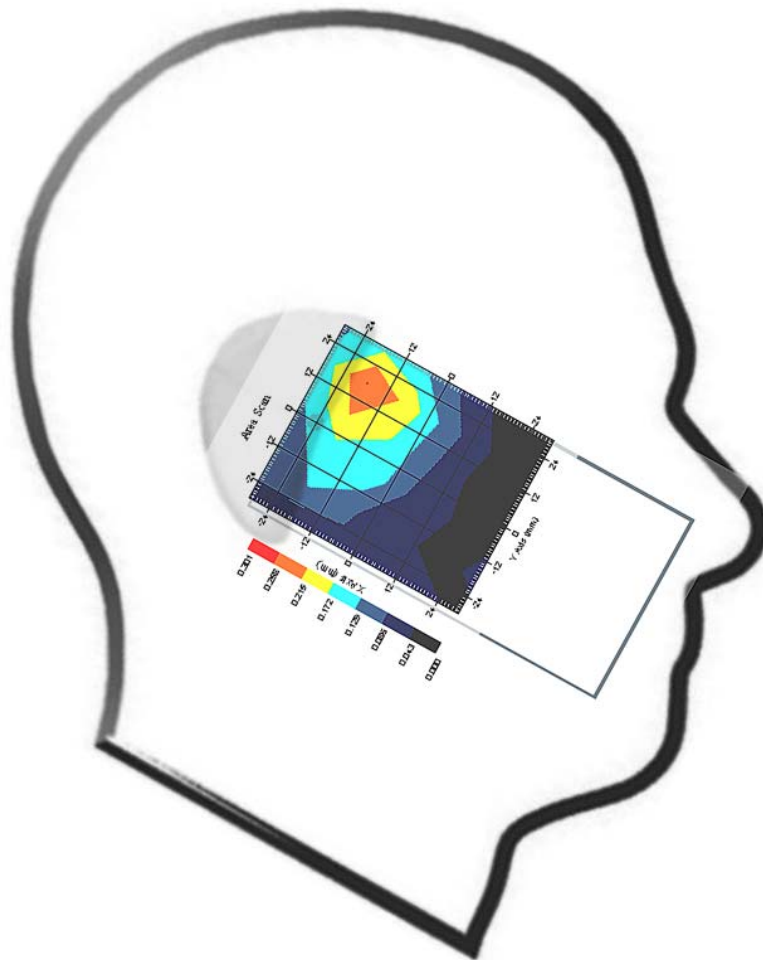
This is previous page plot (zoom in)



Measurement Data

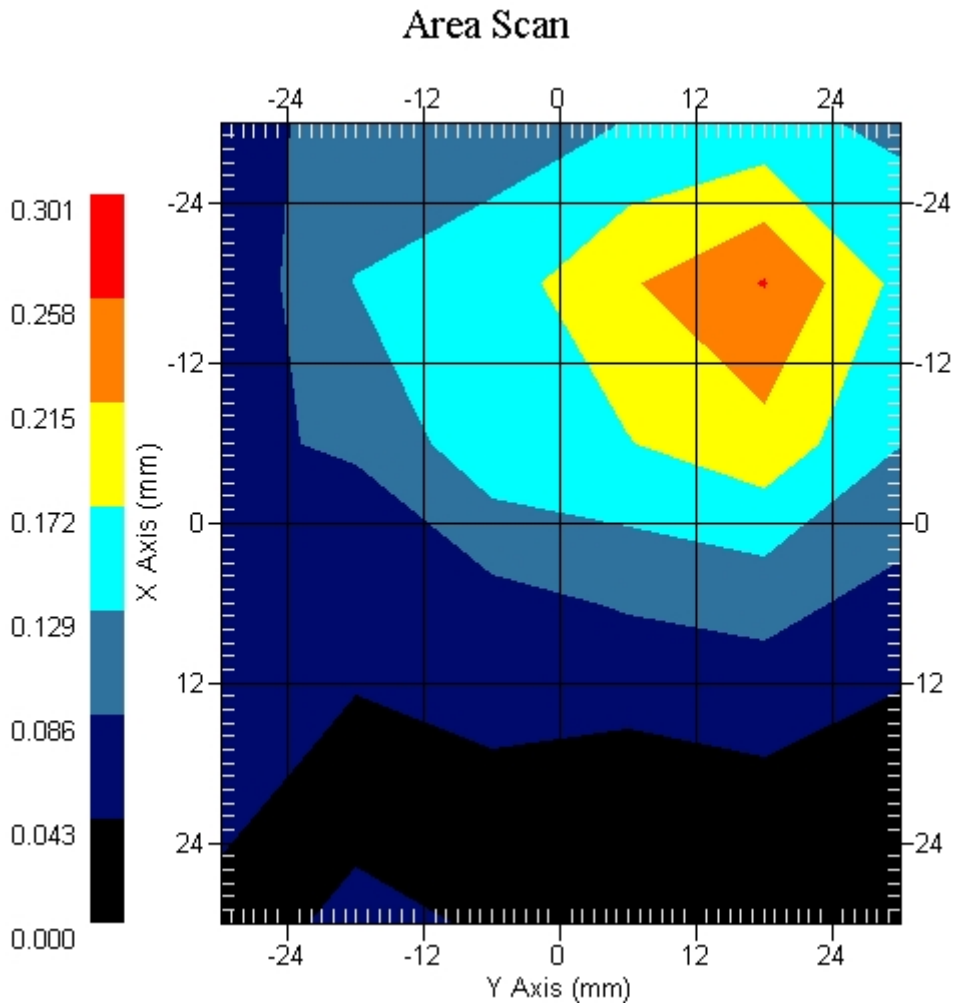
Crest Factor : 8
Tissue Temp. : 21.20 °C
Ambient Temp. : 22.00 °C
Area Scan : 6x6x1 : Measurement x=12mm, y=12mm, z=4mm
Zoom Scan : 5x5x8 : Measurement x=8mm, y=8mm, z=4mm
Power Drift-Start : 0.075 W/kg
Power Drift-Finish: 0.073 W/kg
Power Drift (%) : -2.666

DUT Position : 15° Tilt
Channel : 512



1 gram SAR value : 0.223 W/kg
10 gram SAR value : 0.168 W/kg
Area Scan Peak SAR : 0.260 W/kg
Zoom Scan Peak SAR : 0.370 W/kg

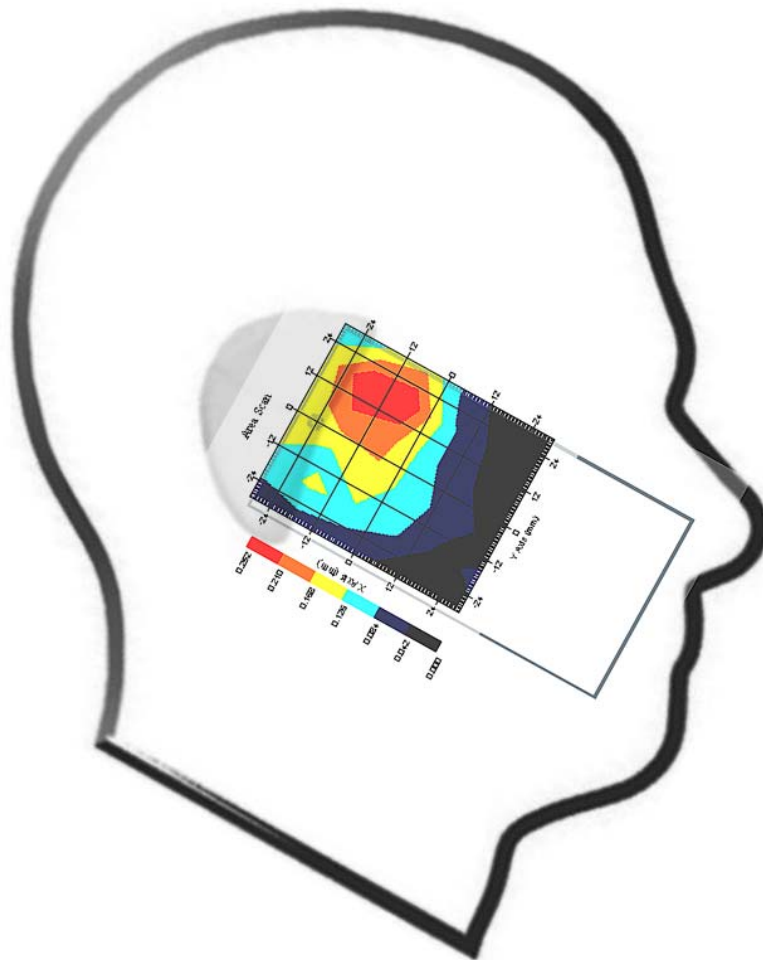
This is previous page plot (zoom in)



Measurement Data

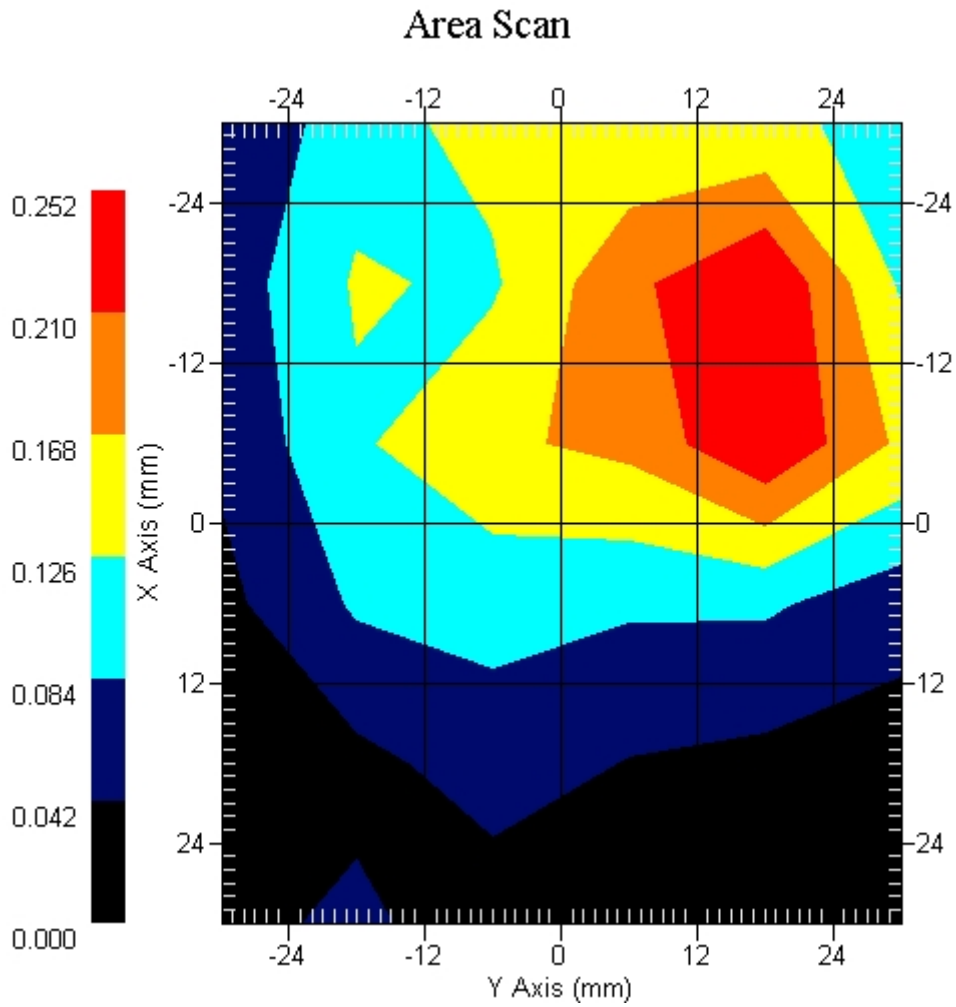
Crest Factor : 8
Tissue Temp. : 21.20 °C
Ambient Temp. : 22.00 °C
Area Scan : 6x6x1 : Measurement x=12mm, y=12mm, z=4mm
Zoom Scan : 5x5x8 : Measurement x=8mm, y=8mm, z=4mm
Power Drift-Start : 0.069 W/kg
Power Drift-Finish: 0.067 W/kg
Power Drift (%) : -2.898

DUT Position : 15° Tilt
Channel : 661



1 gram SAR value : 0.210 W/kg
10 gram SAR value : 0.141 W/kg
Area Scan Peak SAR : 0.250 W/kg
Zoom Scan Peak SAR : 0.360 W/kg

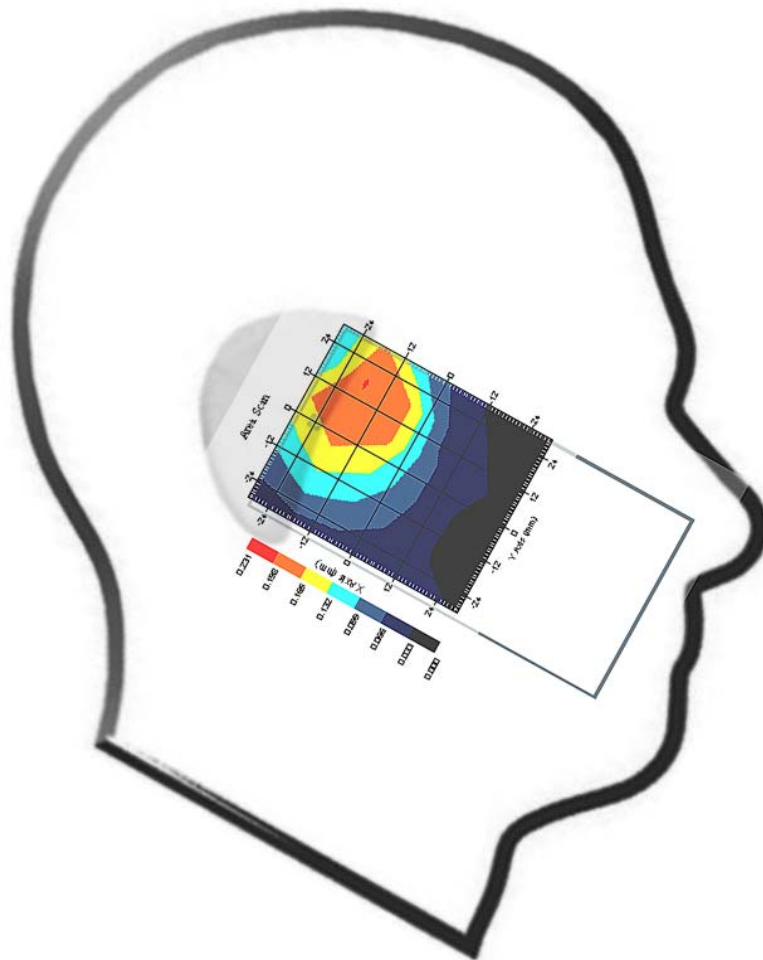
This is previous page plot (zoom in)



Measurement Data

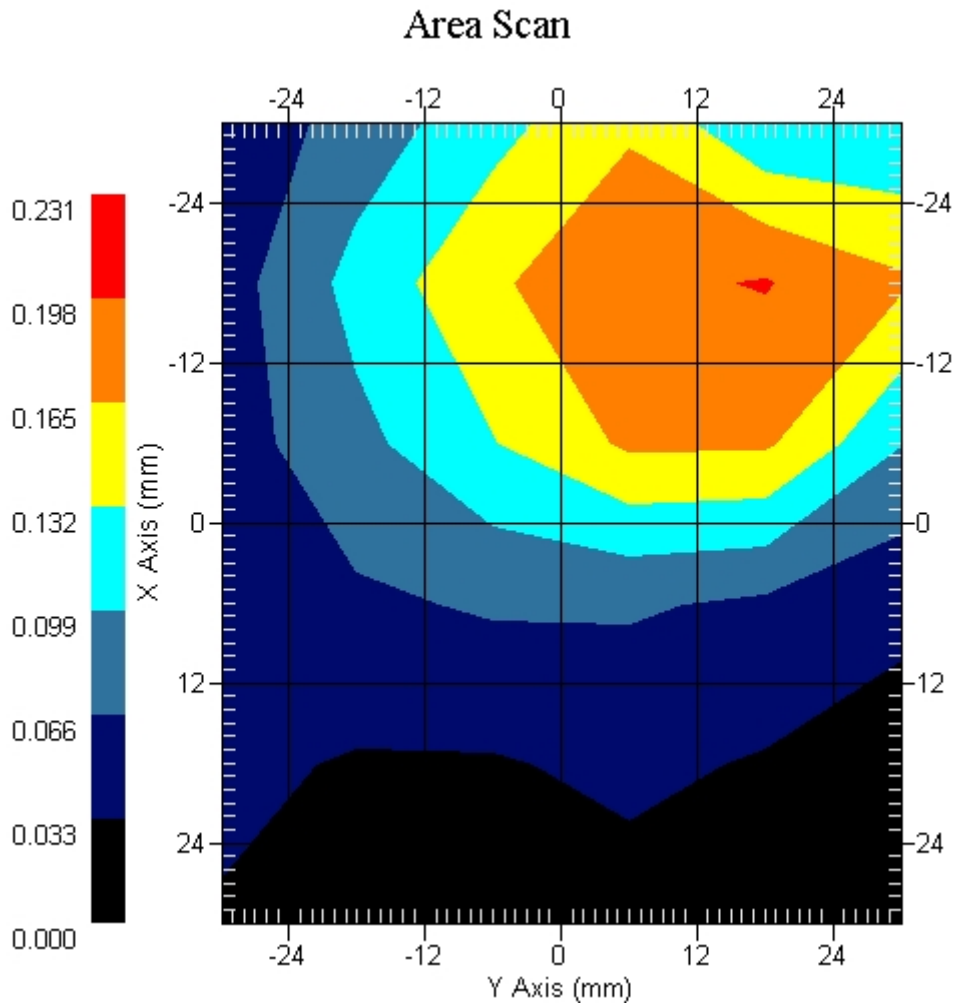
Crest Factor : 8
Tissue Temp. : 21.20 °C
Ambient Temp. : 22.00 °C
Area Scan : 6x6x1 : Measurement x=12mm, y=12mm, z=4mm
Zoom Scan : 5x5x8 : Measurement x=8mm, y=8mm, z=4mm
Power Drift-Start : 0.070 W/kg
Power Drift-Finish: 0.068 W/kg
Power Drift (%) : -2.857

DUT Position : 15° Tilt
Channel : 810



1 gram SAR value : 0.176 W/kg
10 gram SAR value : 0.131 W/kg
Area Scan Peak SAR : 0.200 W/kg
Zoom Scan Peak SAR : 0.390 W/kg

This is previous page plot (zoom in)



ALSAS-10U VER 2.3.6 APREL Laboratories
SAR Test Report-PCS 1900Report Date : 02-Mar-2009
Measurement Date : 02-Mar-2009

Product Data

Device Name : Mobile Phone
Type : Std Form Cell Phone
Model : M900
Frequency : 1900.00 MHz
Max. Transmit Pwr : 1 W
Drift Time : 0 min(s)
Length : 119.2 mm
Width : 62.2 mm
Depth : 17.9 mm
Antenna Type : Internal

Phantom Data

Type : SAM-Right
Size (mm) : 280 x 280 x 280
Location : Right

Tissue Data

Type : HEAD
Serial No. : 324-H
Frequency : 1900.00 MHz
Last Calib. Date : 02-Mar-2009
Temperature : 21.20 °C
Ambient Temp. : 22.00 °C
Humidity : 51.00 RH%
Epsilon : 40.03 F/m
Sigma : 1.44 S/m
Density : 1000.00 kg/cu. m

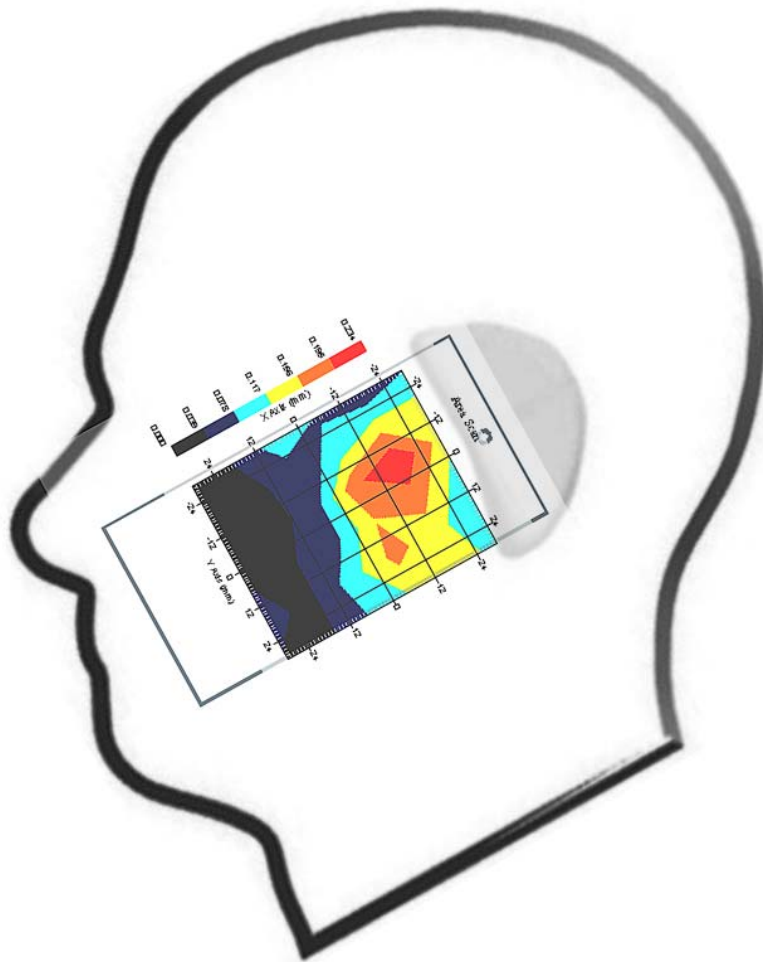
Probe Data

Name : Probe 265
Model : E020
Type : E-Field Triangle
Serial No. : 265
Last Calib. Date : 09-May-2008
Frequency : 1900.00 MHz
Duty Cycle Factor: 8
Conversion Factor: 4.51
Probe Sensitivity: 1.20 1.20 1.20 $\mu\text{V}/(\text{V}/\text{m})^2$
Compression Point: 95.00 mV
Offset : 1.56 mm

Measurement Data

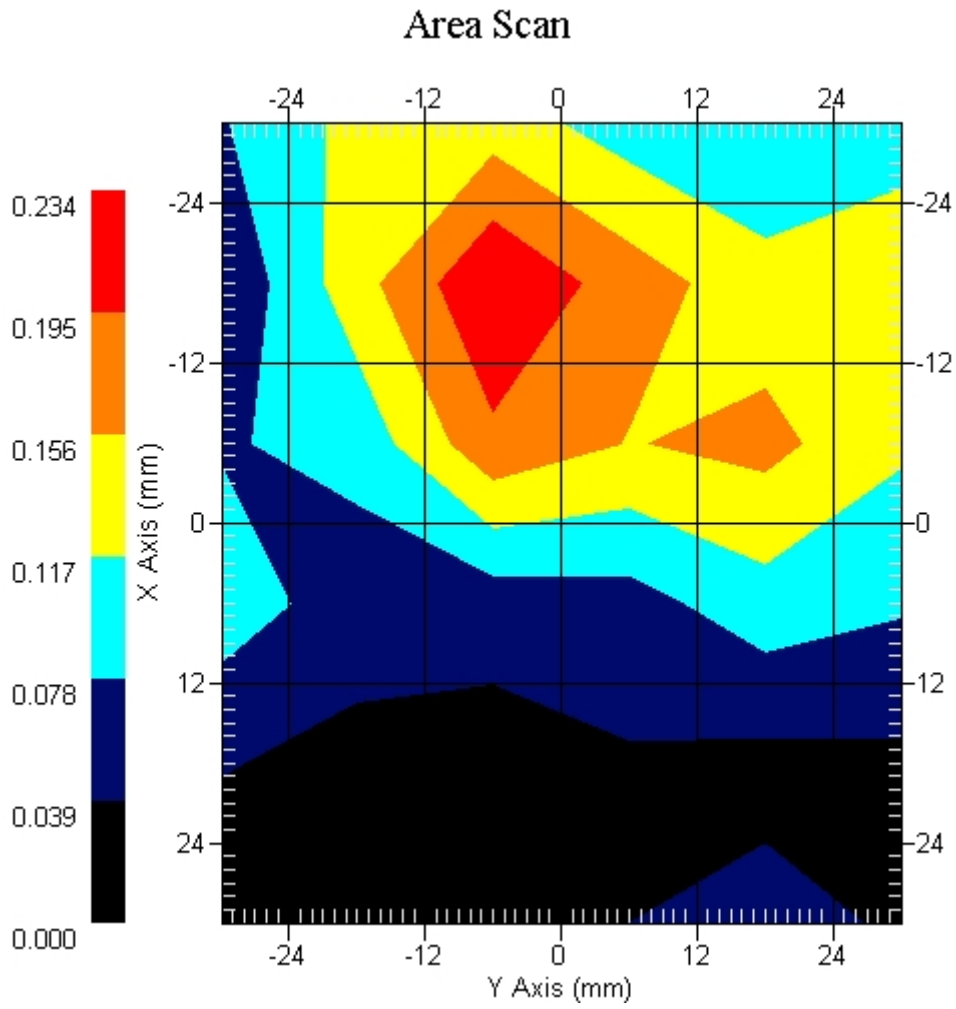
Crest Factor : 8
Tissue Temp. : 21.20 °C
Ambient Temp. : 22.00 °C
Area Scan : 6x6x1 : Measurement x=12mm, y=12mm, z=4mm
Zoom Scan : 5x5x8 : Measurement x=8mm, y=8mm, z=4mm
Power Drift-Start : 0.040 W/kg
Power Drift-Finish: 0.040 W/kg
Power Drift (%) : 0.712

DUT Position : Touch
Channel : 512



1 gram SAR value : 0.181 W/kg
10 gram SAR value : 0.156 W/kg
Area Scan Peak SAR : 0.231 W/kg
Zoom Scan Peak SAR : 0.370 W/kg

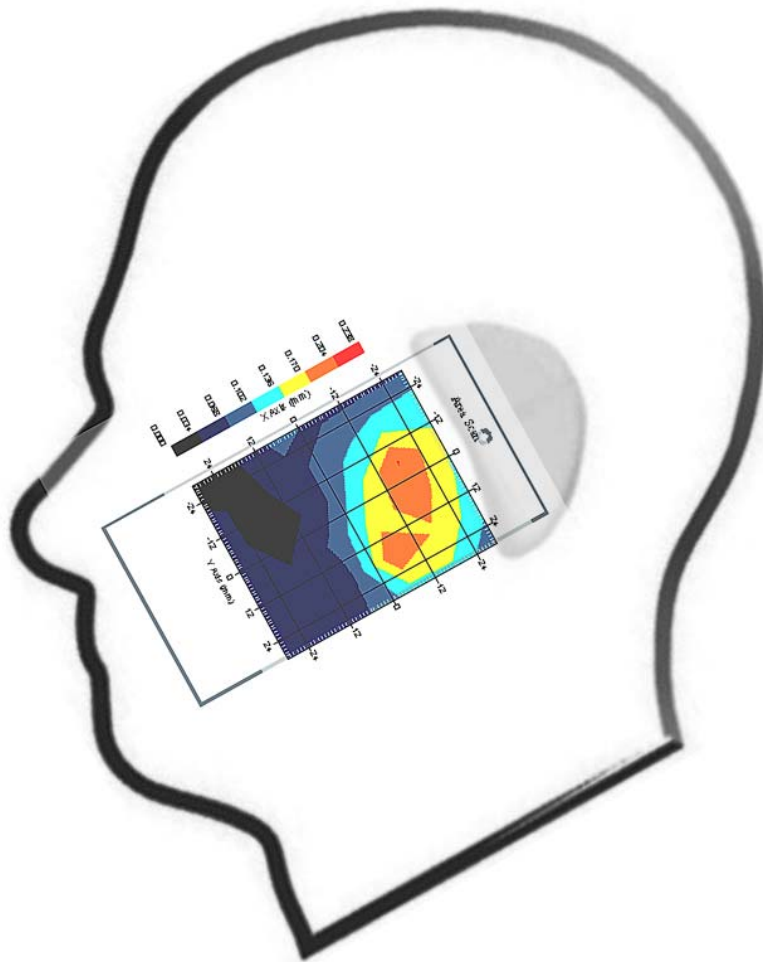
This is previous page plot (zoom in)



Measurement Data

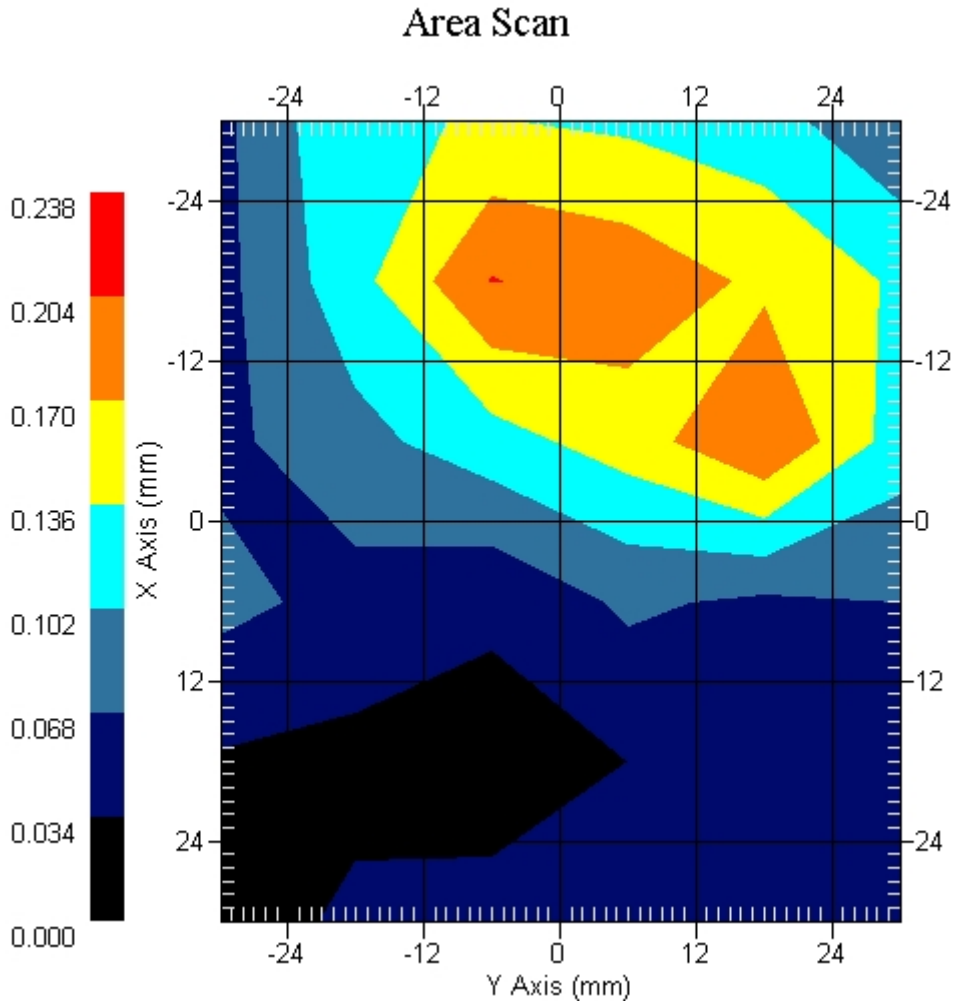
Crest Factor : 8
Tissue Temp. : 21.20 °C
Ambient Temp. : 22.00 °C
Area Scan : 6x6x1 : Measurement x=12mm, y=12mm, z=4mm
Zoom Scan : 5x5x8 : Measurement x=8mm, y=8mm, z=4mm
Power Drift-Start : 0.038 W/kg
Power Drift-Finish: 0.039 W/kg
Power Drift (%) : 2.631

DUT Position : Touch
Channel : 661



1 gram SAR value : 0.201 W/kg
10 gram SAR value : 0.139 W/kg
Area Scan Peak SAR : 0.205 W/kg
Zoom Scan Peak SAR : 0.340 W/kg

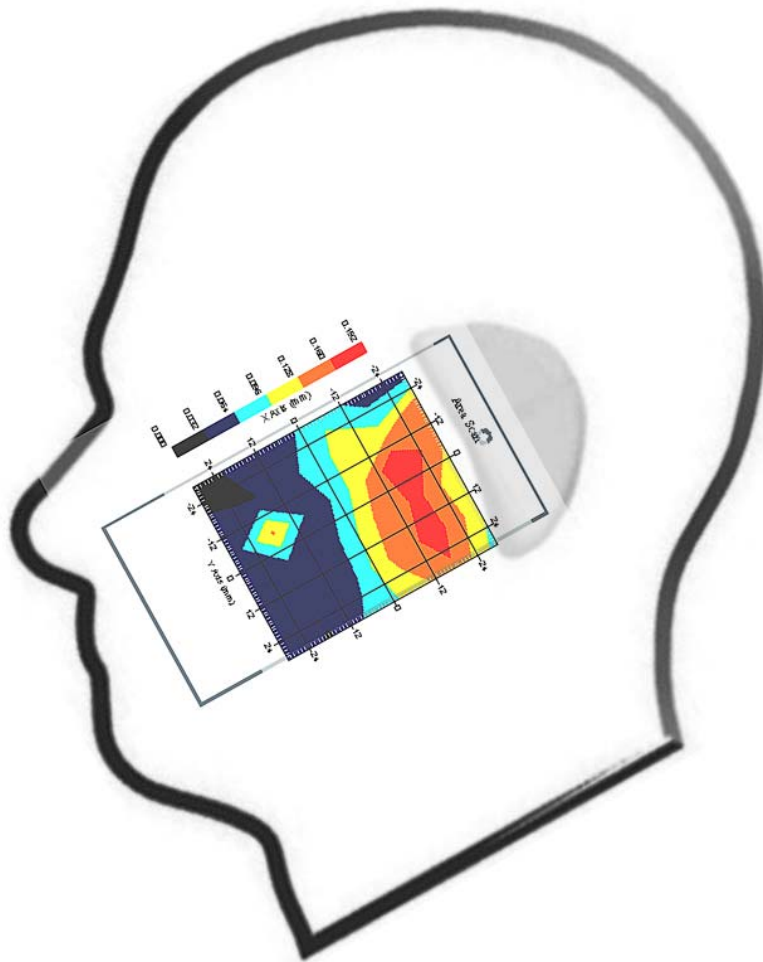
This is previous page plot (zoom in)



Measurement Data

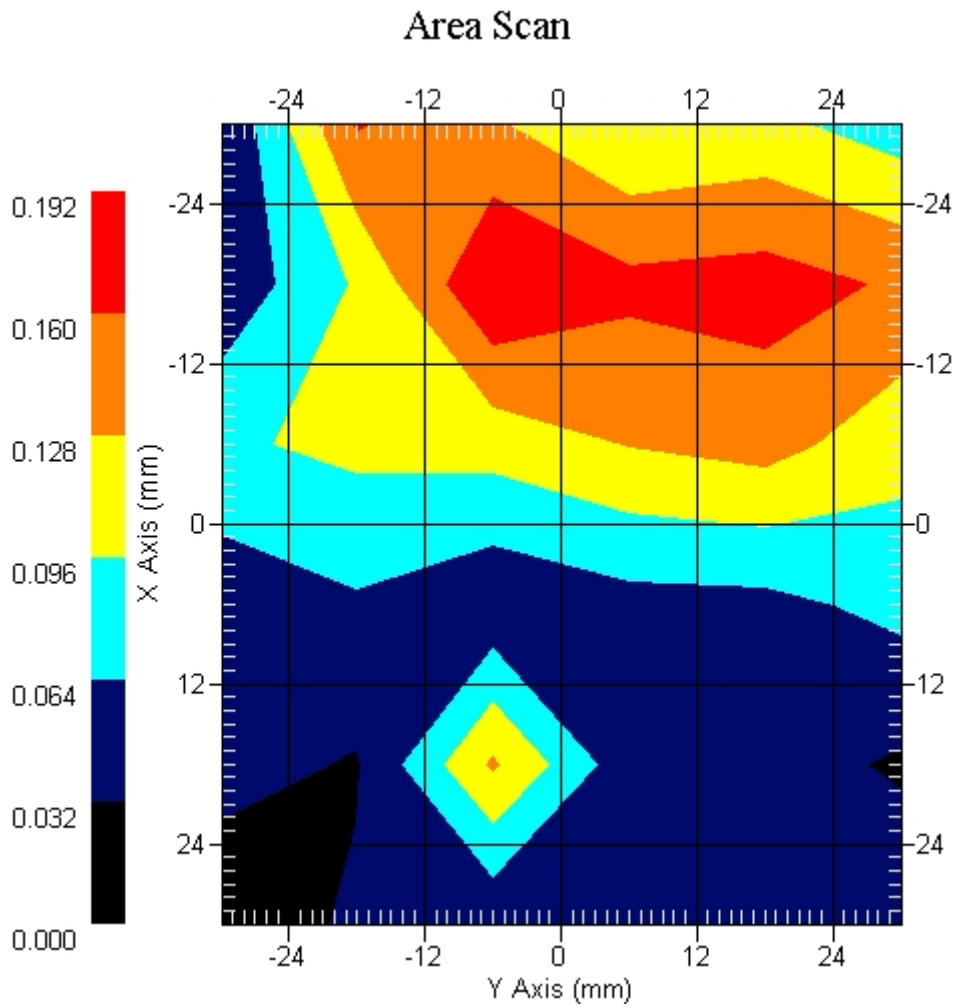
Crest Factor : 8
Tissue Temp. : 21.20 °C
Ambient Temp. : 22.00 °C
Area Scan : 6x6x1 : Measurement x=12mm, y=12mm, z=4mm
Zoom Scan : 5x5x8 : Measurement x=8mm, y=8mm, z=4mm
Power Drift-Start : 0.081 W/kg
Power Drift-Finish: 0.078 W/kg
Power Drift (%) : -3.703

DUT Position : Touch
Channel : 810



1 gram SAR value : 0.190 W/kg
10 gram SAR value : 0.133 W/kg
Area Scan Peak SAR : 0.192 W/kg
Zoom Scan Peak SAR : 0.300 W/kg

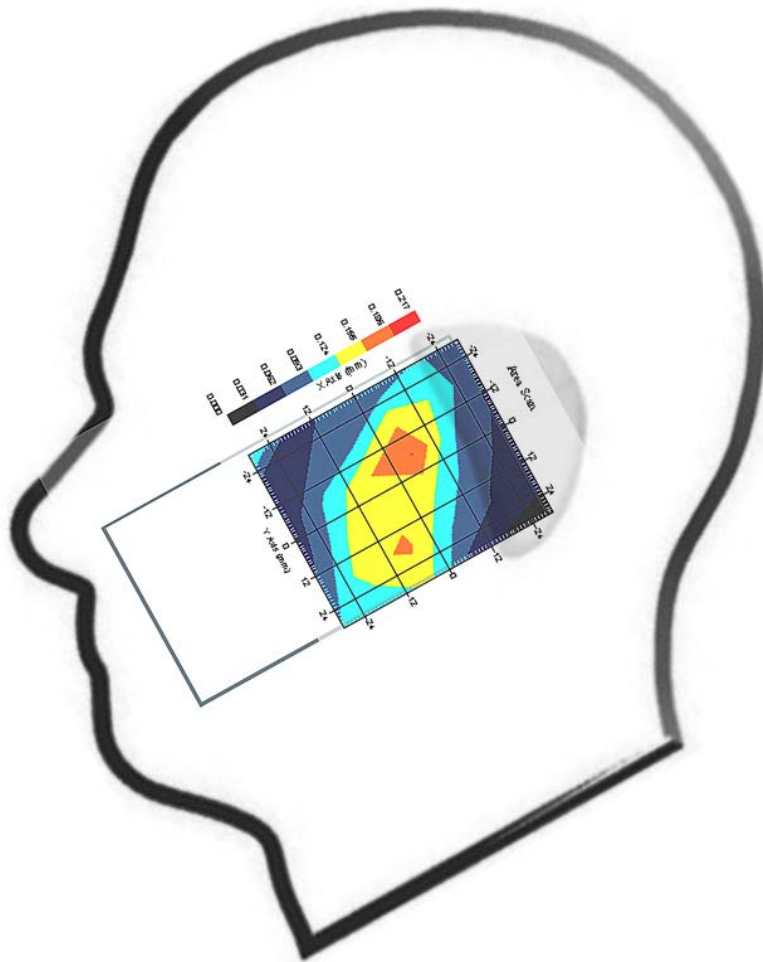
This is previous page plot (zoom in)



Measurement Data

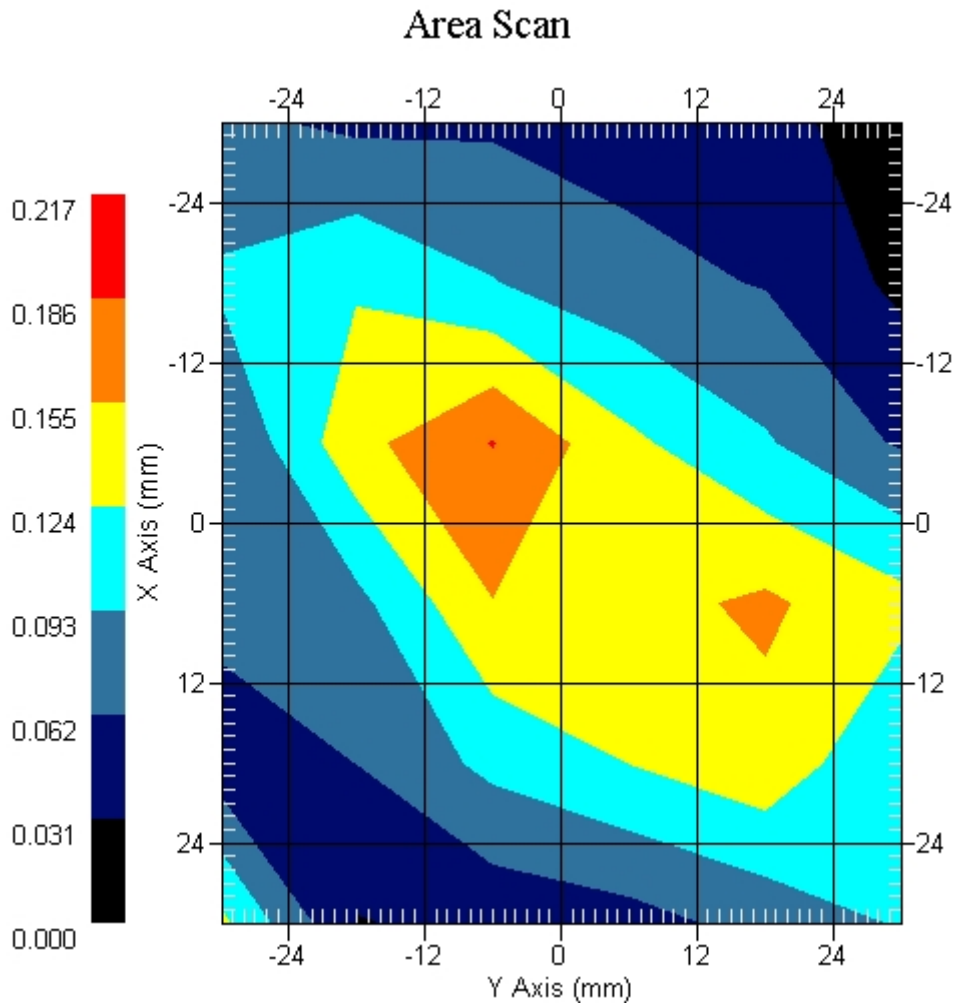
Crest Factor : 8
Tissue Temp. : 21.20 °C
Ambient Temp. : 22.00 °C
Area Scan : 6x6x1 : Measurement x=12mm, y=12mm, z=4mm
Zoom Scan : 5x5x8 : Measurement x=8mm, y=8mm, z=4mm
Power Drift-Start : 0.051 W/kg
Power Drift-Finish: 0.053 W/kg
Power Drift (%) : 3.551

DUT Position : 15° Tilt
Channel : 512



1 gram SAR value : 0.159 W/kg
10 gram SAR value : 0.102 W/kg
Area Scan Peak SAR : 0.187 W/kg
Zoom Scan Peak SAR : 0.320 W/kg

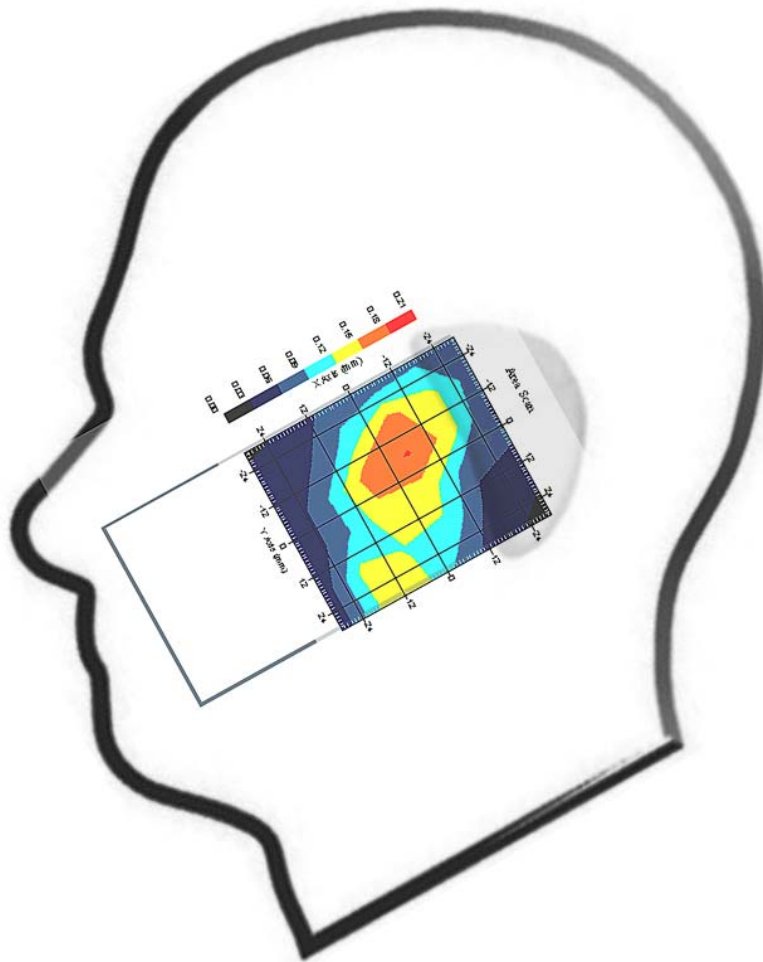
This is previous page plot (zoom in)



Measurement Data

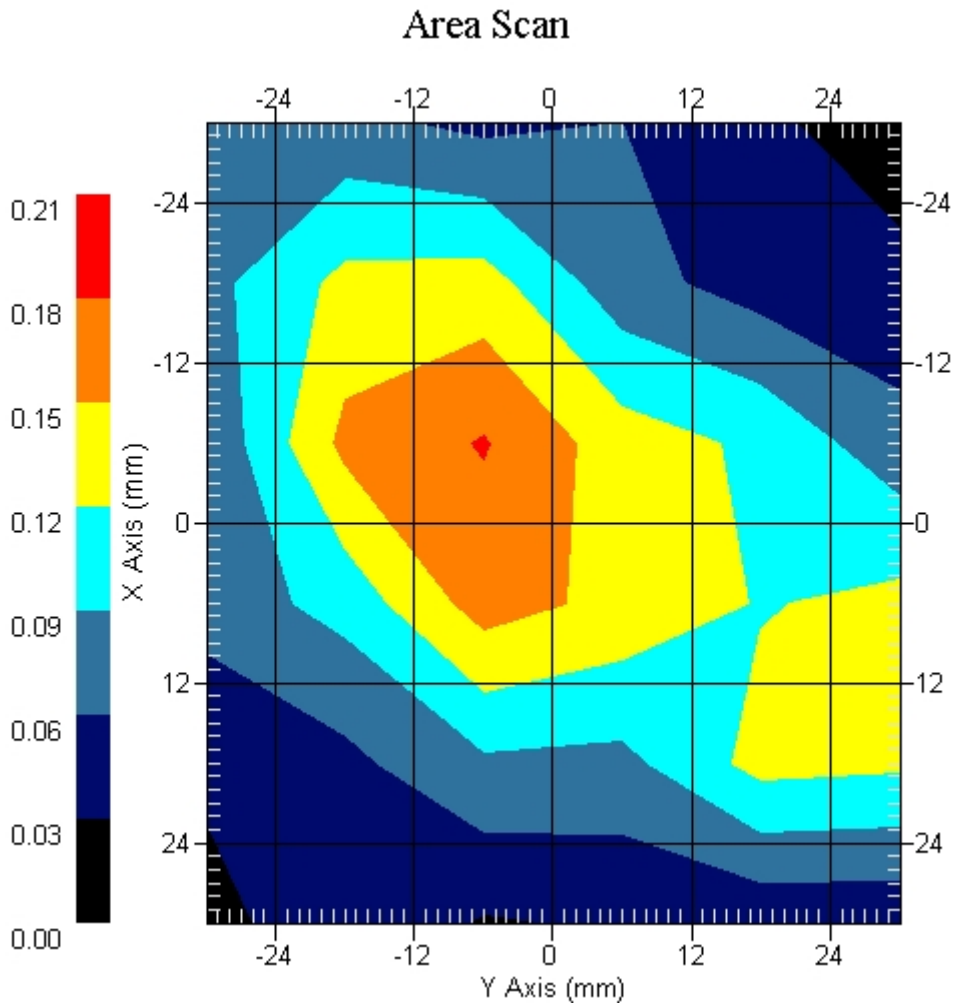
Crest Factor : 8
Tissue Temp. : 21.20 °C
Ambient Temp. : 22.00 °C
Area Scan : 6x6x1 : Measurement x=12mm, y=12mm, z=4mm
Zoom Scan : 5x5x8 : Measurement x=8mm, y=8mm, z=4mm
Power Drift-Start : 0.069 W/kg
Power Drift-Finish: 0.072 W/kg
Power Drift (%) : 4.347

DUT Position : 15° Tilt
Channel : 661



1 gram SAR value : 0.122 W/kg
10 gram SAR value : 0.084 W/kg
Area Scan Peak SAR : 0.182 W/kg
Zoom Scan Peak SAR : 0.130 W/kg

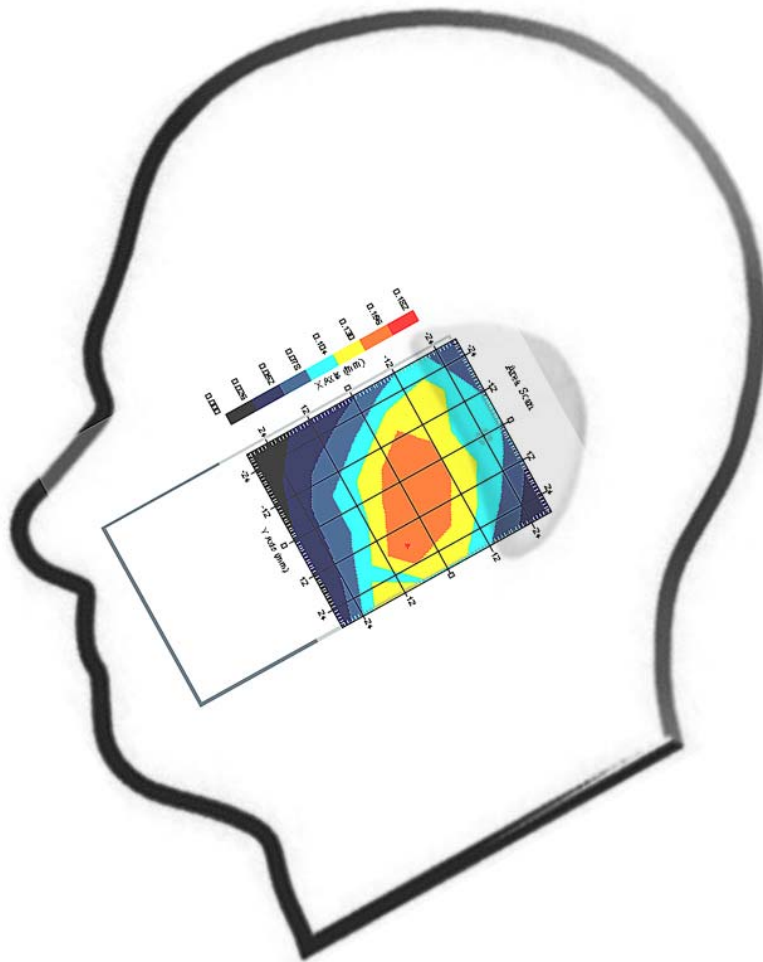
This is previous page plot (zoom in)



Measurement Data

Crest Factor : 8
Tissue Temp. : 21.20 °C
Ambient Temp. : 22.00 °C
Area Scan : 6x6x1 : Measurement x=12mm, y=12mm, z=4mm
Zoom Scan : 5x5x8 : Measurement x=8mm, y=8mm, z=4mm
Power Drift-Start : 0.051 W/kg
Power Drift-Finish: 0.053 W/kg
Power Drift (%) : 3.921

DUT Position : 15° Tilt
Channel : 810



1 gram SAR value : 0.155 W/kg
10 gram SAR value : 0.115 W/kg
Area Scan Peak SAR : 0.158 W/kg
Zoom Scan Peak SAR : 0.360 W/kg

This is previous page plot (zoom in)

