

ALSAS-10U VER 2.3.6 APREL Laboratories
SAR Test Report-WCDMA Band V RMCReport Date : 11-Feb-2009
Measurement Date : 11-Feb-2009

Product Data

Device Name : Smart Handheld
Type : Std Form Cell Phone
Model : acer & glofiish
Frequency : 850.00 MHz
Max. Transmit Pwr : 2 W
Drift Time : 0 min(s)
Length : 117.6 mm
Width : 63.5 mm
Depth : 12.9 mm
Antenna Type : Internal

Phantom Data

Type : Uni-Phantom
Size (mm) : 280 x 280 x 200
Location : Center

Tissue Data

Type : BODY
Serial No. : 322-B
Frequency : 835.00 MHz
Last Calib. Date : 11-Feb-2009
Temperature : 21.20 °C
Ambient Temp. : 21.80 °C
Humidity : 52.00 RH%
Epsilon : 55.87 F/m
Sigma : 0.94 S/m
Density : 1000.00 kg/cu. m

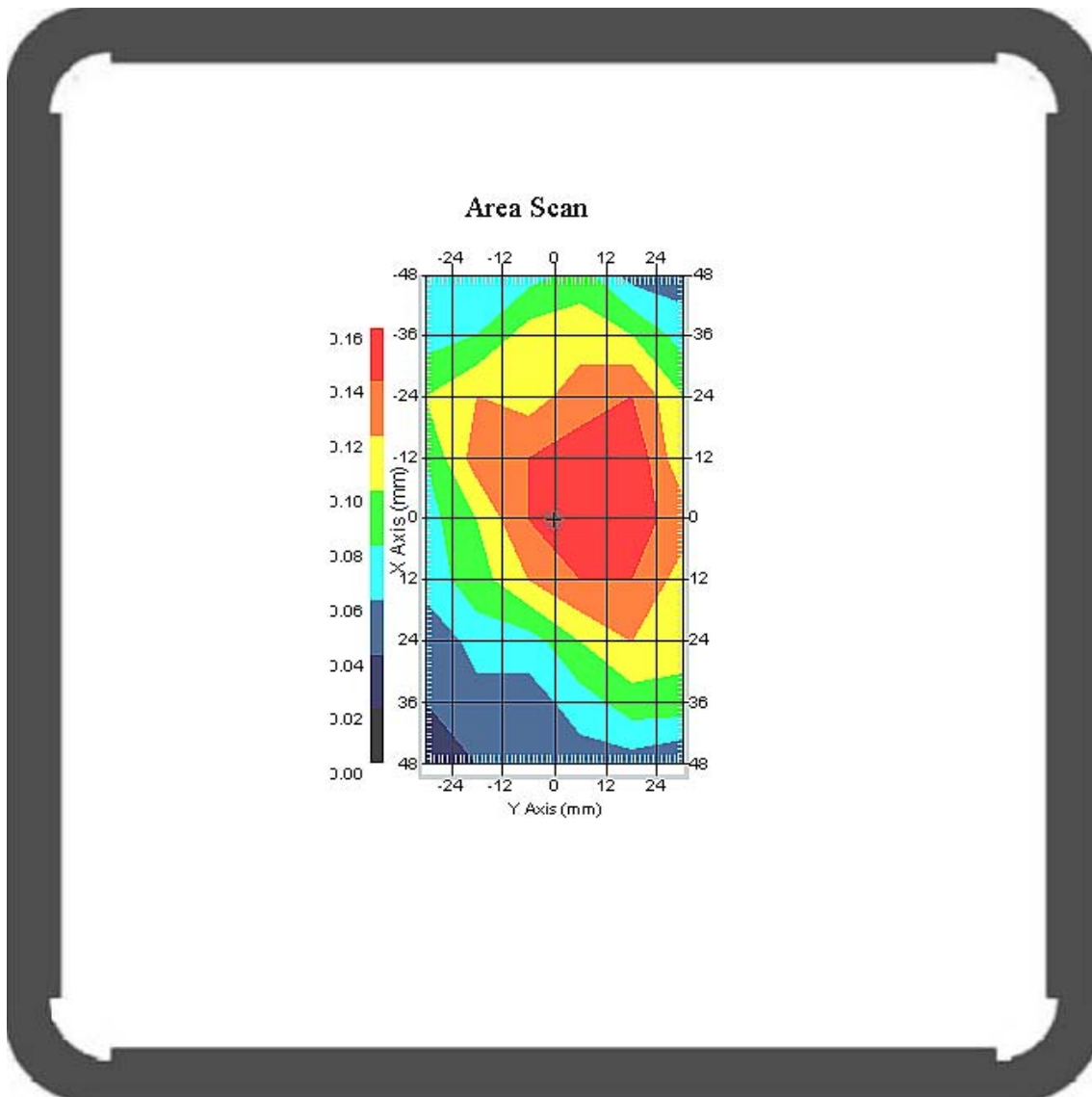
Probe Data

Name : Probe 265
Model : E020
Type : E-Field Triangle
Serial No. : 265
Last Calib. Date : 09-May-2008
Frequency : 835.00 MHz
Duty Cycle Factor: 1
Conversion Factor: 6.6
Probe Sensitivity: 1.20 1.20 1.20 $\mu\text{V}/(\text{V}/\text{m})^2$
Compression Point: 95.00 mV
Offset : 1.56 mm

Measurement Data

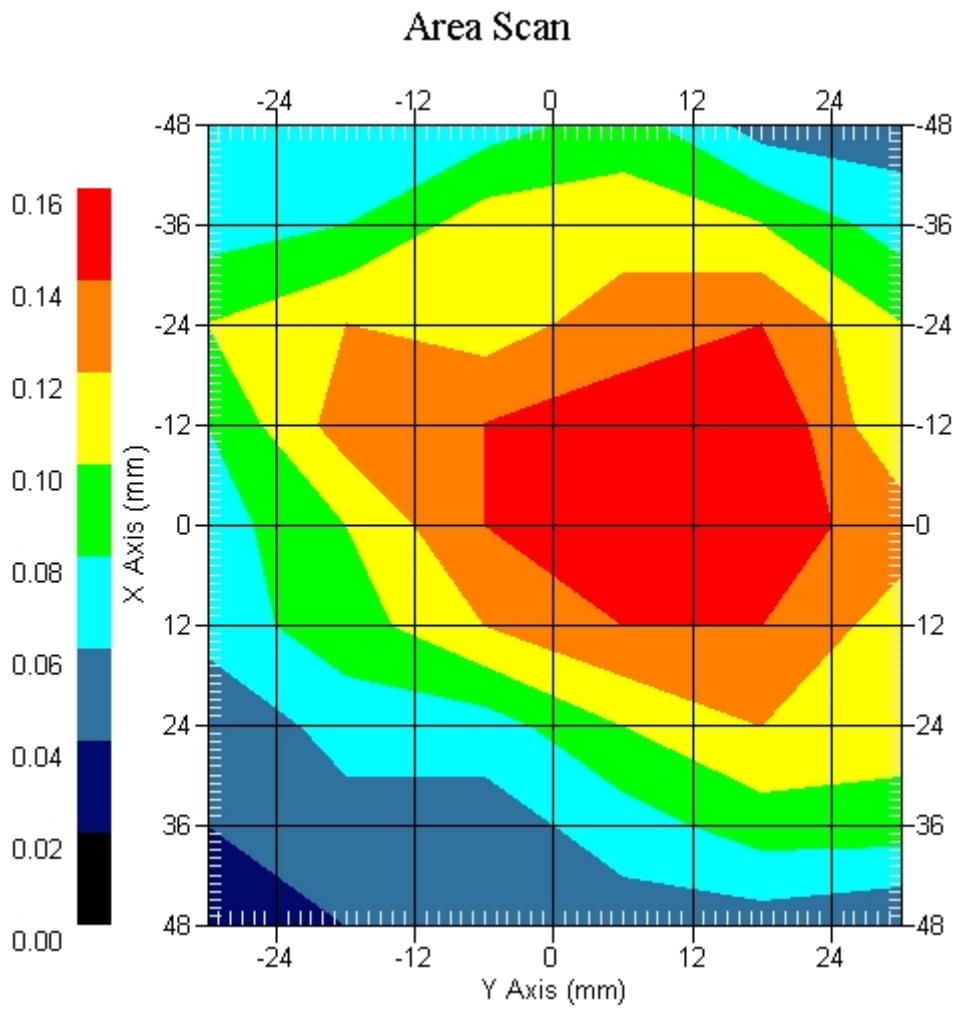
Crest Factor : 1
 Tissue Temp. : 21.20 °C
 Ambient Temp. : 21.80 °C
 Area Scan : 9x6x1 : Measurement x=12mm, y=12mm, z=4mm
 Zoom Scan : 5x5x8 : Measurement x=8mm, y=8mm, z=4mm
 Power Drift-Start : 0.115 W/kg
 Power Drift-Finish: 0.117 W/kg
 Power Drift (%) : 1.854

DUT Position : Touch
 Channel : 4132



1 gram SAR value : 0.151 W/kg
 10 gram SAR value : 0.102 W/kg
 Area Scan Peak SAR : 0.160 W/kg
 Zoom Scan Peak SAR : 0.250 W/kg

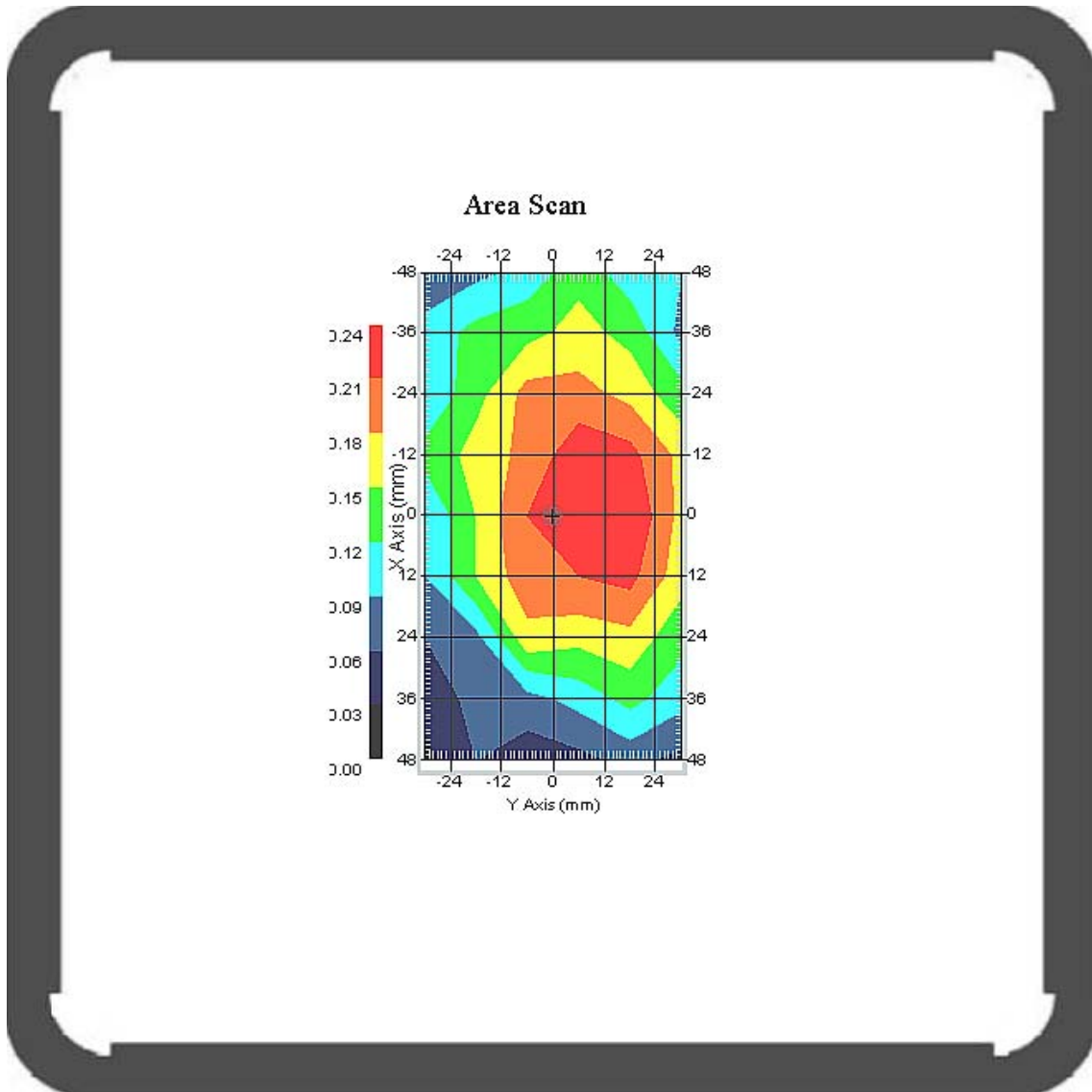
This is previous page plot (zoom in)



Measurement Data

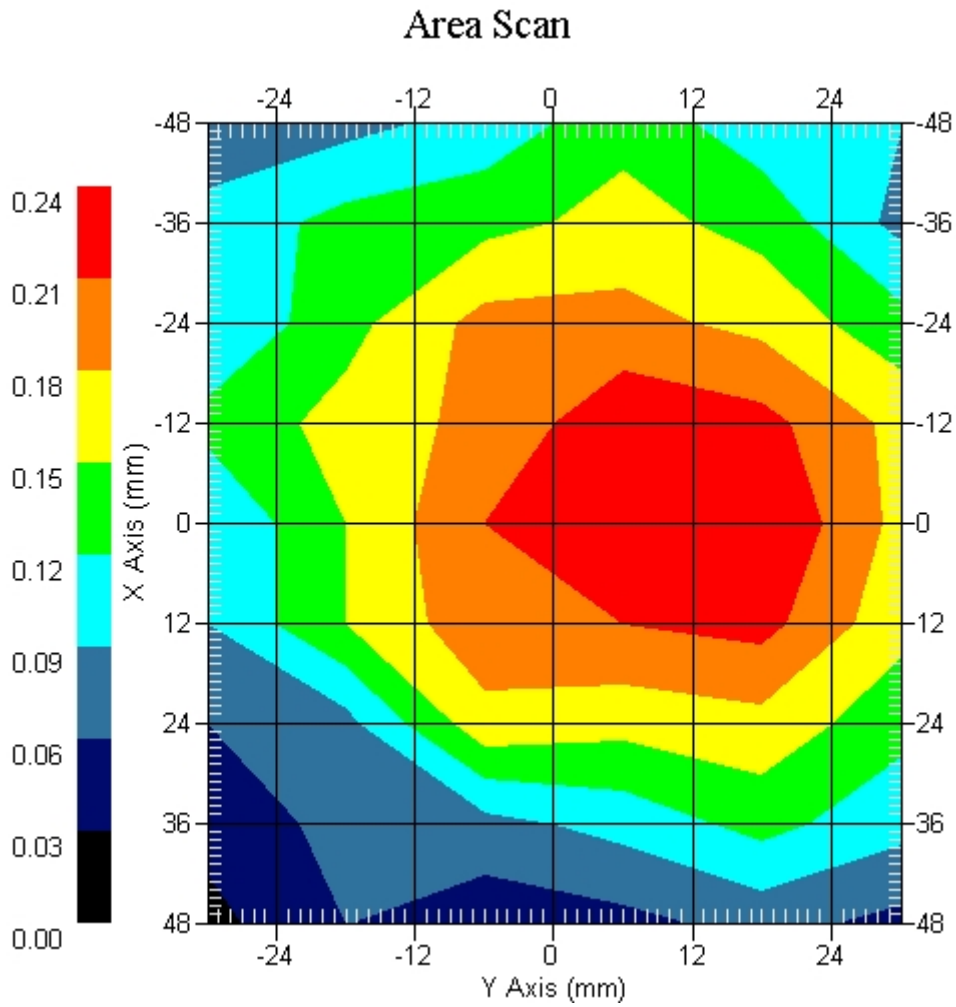
Crest Factor : 1
Tissue Temp. : 21.20 °C
Ambient Temp. : 21.80 °C
Area Scan : 9x6x1 : Measurement x=12mm, y=12mm, z=4mm
Zoom Scan : 5x5x8 : Measurement x=8mm, y=8mm, z=4mm
Power Drift-Start : 0.188 W/kg
Power Drift-Finish: 0.184 W/kg
Power Drift (%) : -2.127

DUT Position : Touch
Channel : 4183



1 gram SAR value : 0.224 W/kg
10 gram SAR value : 0.162 W/kg
Area Scan Peak SAR : 0.240 W/kg
Zoom Scan Peak SAR : 0.360 W/kg

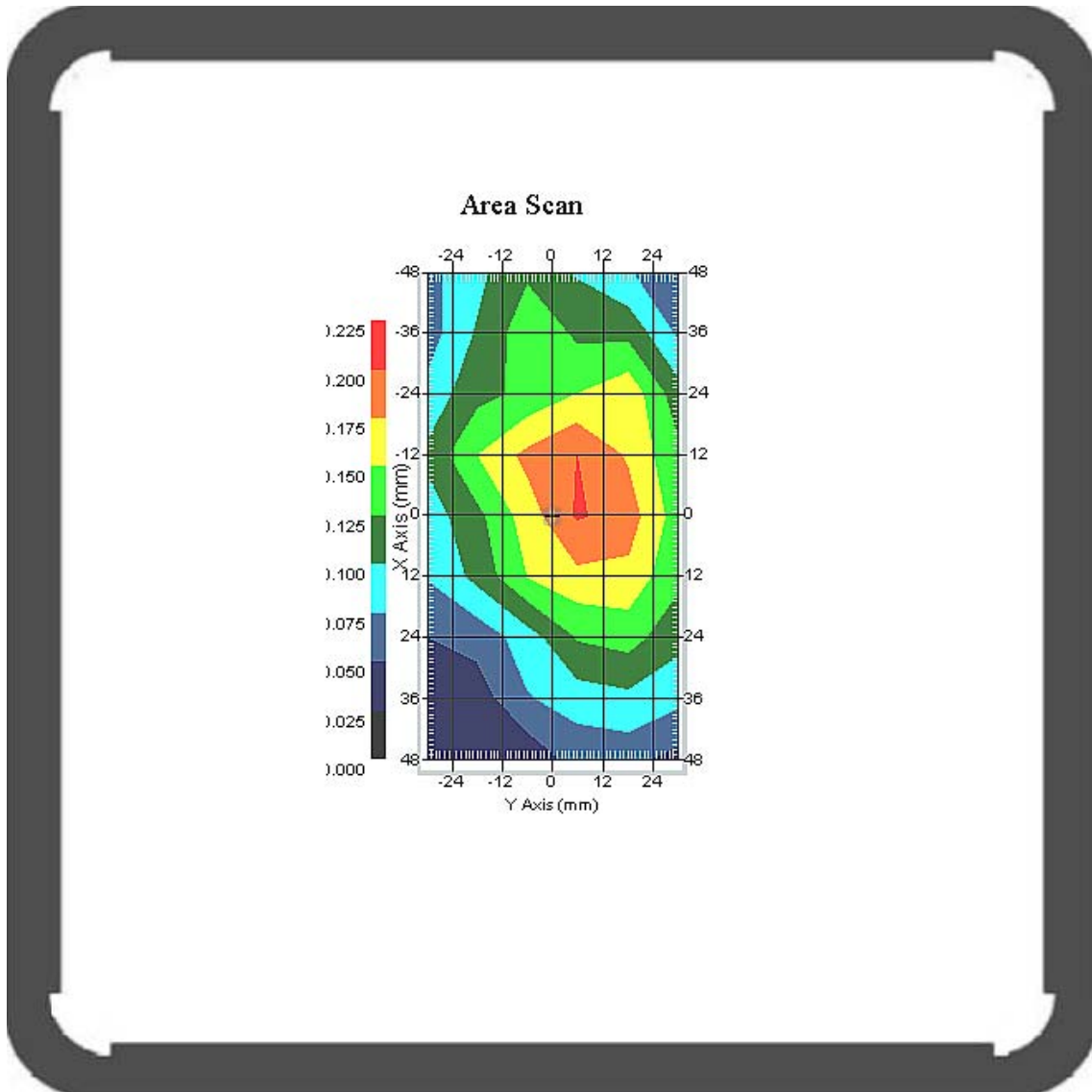
This is previous page plot (zoom in)



Measurement Data

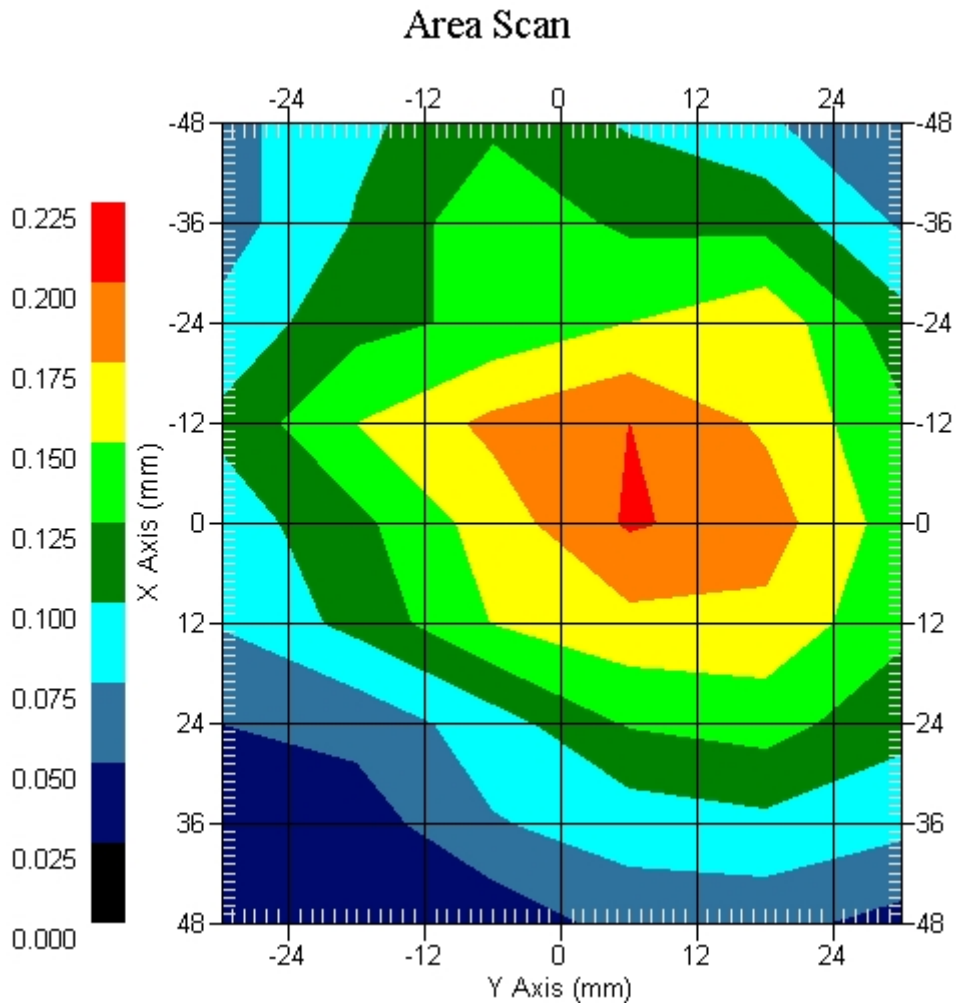
Crest Factor : 1
Tissue Temp. : 21.20 °C
Ambient Temp. : 21.80 °C
Area Scan : 9x6x1 : Measurement x=12mm, y=12mm, z=4mm
Zoom Scan : 5x5x8 : Measurement x=8mm, y=8mm, z=4mm
Power Drift-Start : 0.152 W/kg
Power Drift-Finish: 0.149 W/kg
Power Drift (%) : -1.973

DUT Position : Touch
Channel : 4233



1 gram SAR value : 0.193 W/kg
10 gram SAR value : 0.129 W/kg
Area Scan Peak SAR : 0.203 W/kg
Zoom Scan Peak SAR : 0.320 W/kg

This is previous page plot (zoom in)



ALSAS-10U VER 2.3.6 APREL Laboratories
 SAR Test Report-WCDMA Band V HSDPA

Report Date : 11-Feb-2009
 Measurement Date : 11-Feb-2009

Product Data

Device Name : Smart Handheld
 Type : Std Form Cell Phone
 Model : acer & glofiish
 Frequency : 850.00 MHz
 Max. Transmit Pwr : 2 W
 Drift Time : 0 min(s)
 Length : 117.6 mm
 Width : 63.5 mm
 Depth : 12.9 mm
 Antenna Type : Internal

Phantom Data

Type : Uni-Phantom
 Size (mm) : 280 x 280 x 200
 Location : Center

Tissue Data

Type : BODY
 Serial No. : 322-B
 Frequency : 835.00 MHz
 Last Calib. Date : 11-Feb-2009
 Temperature : 21.20 °C
 Ambient Temp. : 21.80 °C
 Humidity : 52.00 RH%
 Epsilon : 55.87 F/m
 Sigma : 0.94 S/m
 Density : 1000.00 kg/cu. m

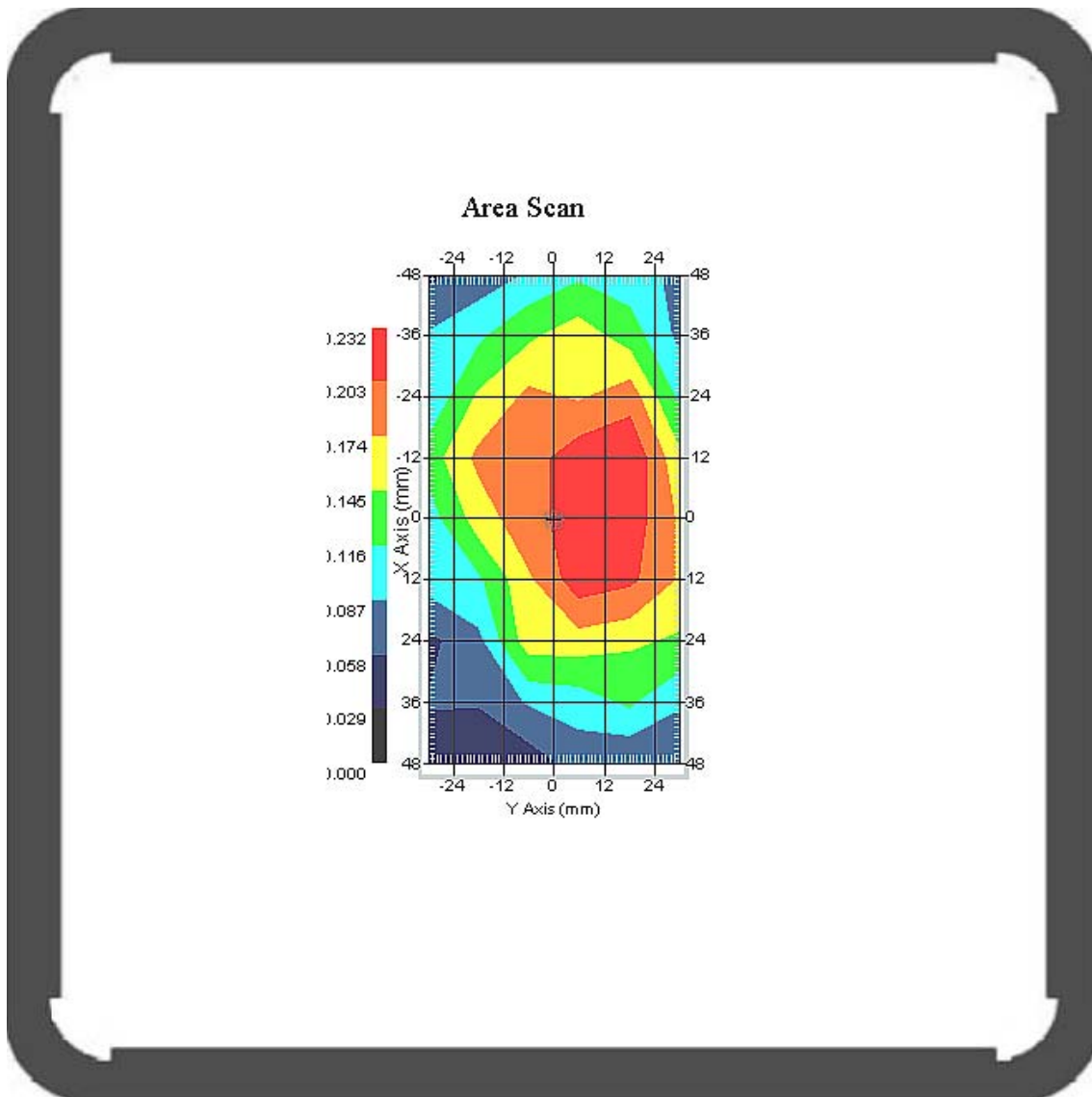
Probe Data

Name : Probe 265
 Model : E020
 Type : E-Field Triangle
 Serial No. : 265
 Last Calib. Date : 09-May-2008
 Frequency : 835.00 MHz
 Duty Cycle Factor: 1
 Conversion Factor: 6.6
 Probe Sensitivity: 1.20 1.20 1.20 $\mu\text{V}/(\text{V}/\text{m})^2$
 Compression Point: 95.00 mV
 Offset : 1.56 mm

Measurement Data

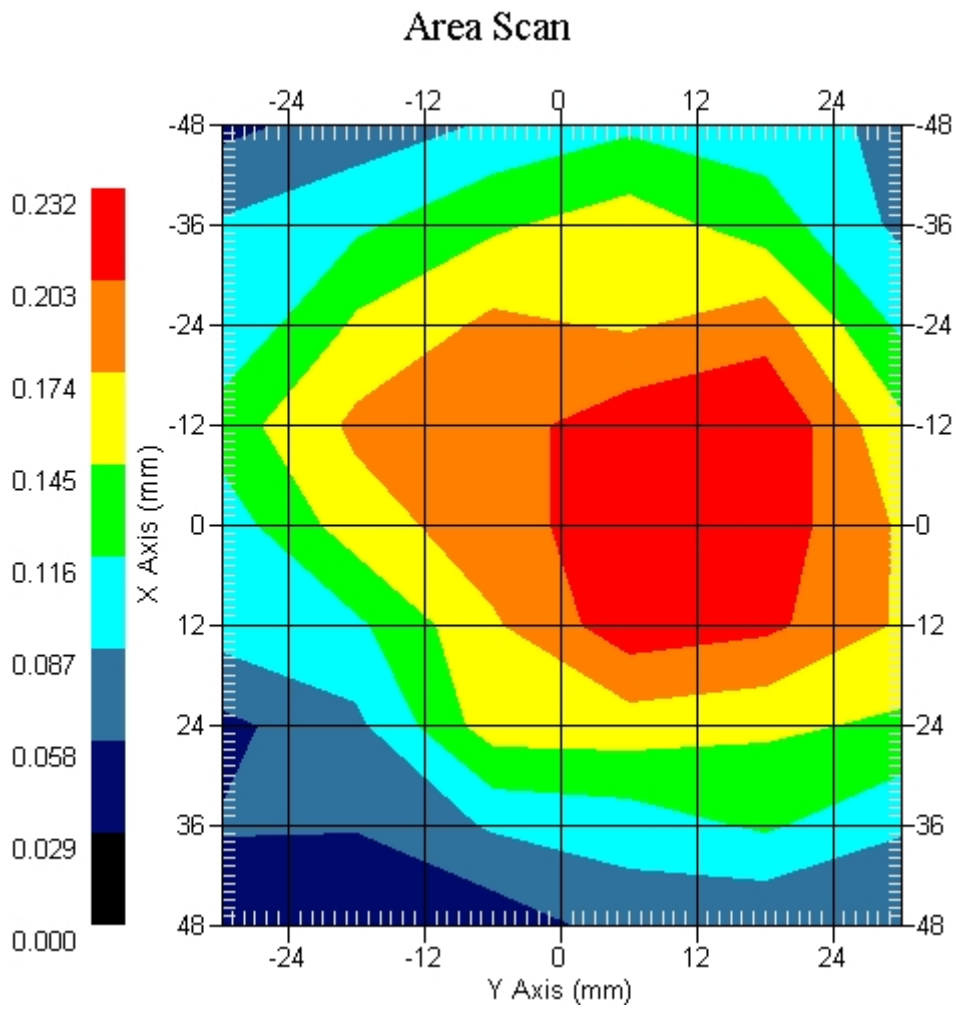
Crest Factor : 1
Tissue Temp. : 21.20 °C
Ambient Temp. : 21.80 °C
Area Scan : 9x6x1 : Measurement x=12mm, y=12mm, z=4mm
Zoom Scan : 5x5x8 : Measurement x=8mm, y=8mm, z=4mm
Power Drift-Start : 0.178 W/kg
Power Drift-Finish: 0.183 W/kg
Power Drift (%) : 2.808

DUT Position : Touch
Channel : 4183



1 gram SAR value : 0.223 W/kg
10 gram SAR value : 0.129 W/kg
Area Scan Peak SAR : 0.230 W/kg
Zoom Scan Peak SAR : 0.352 W/kg

This is previous page plot (zoom in)



ALSAS-10U VER 2.3.6 APREL Laboratories
 SAR Test Report-WCDMA Band V HSUPA

Report Date : 11-Feb-2009
 Measurement Date : 11-Feb-2009

Product Data

Device Name : Smart Handheld
 Type : Std Form Cell Phone
 Model : acer & glofiish
 Frequency : 850.00 MHz
 Max. Transmit Pwr : 2 W
 Drift Time : 0 min(s)
 Length : 117.6 mm
 Width : 63.5 mm
 Depth : 12.9 mm
 Antenna Type : Internal

Phantom Data

Type : Uni-Phantom
 Size (mm) : 280 x 280 x 200
 Location : Center

Tissue Data

Type : BODY
 Serial No. : 322-B
 Frequency : 835.00 MHz
 Last Calib. Date : 11-Feb-2009
 Temperature : 21.20 °C
 Ambient Temp. : 21.80 °C
 Humidity : 52.00 RH%
 Epsilon : 55.87 F/m
 Sigma : 0.94 S/m
 Density : 1000.00 kg/cu. m

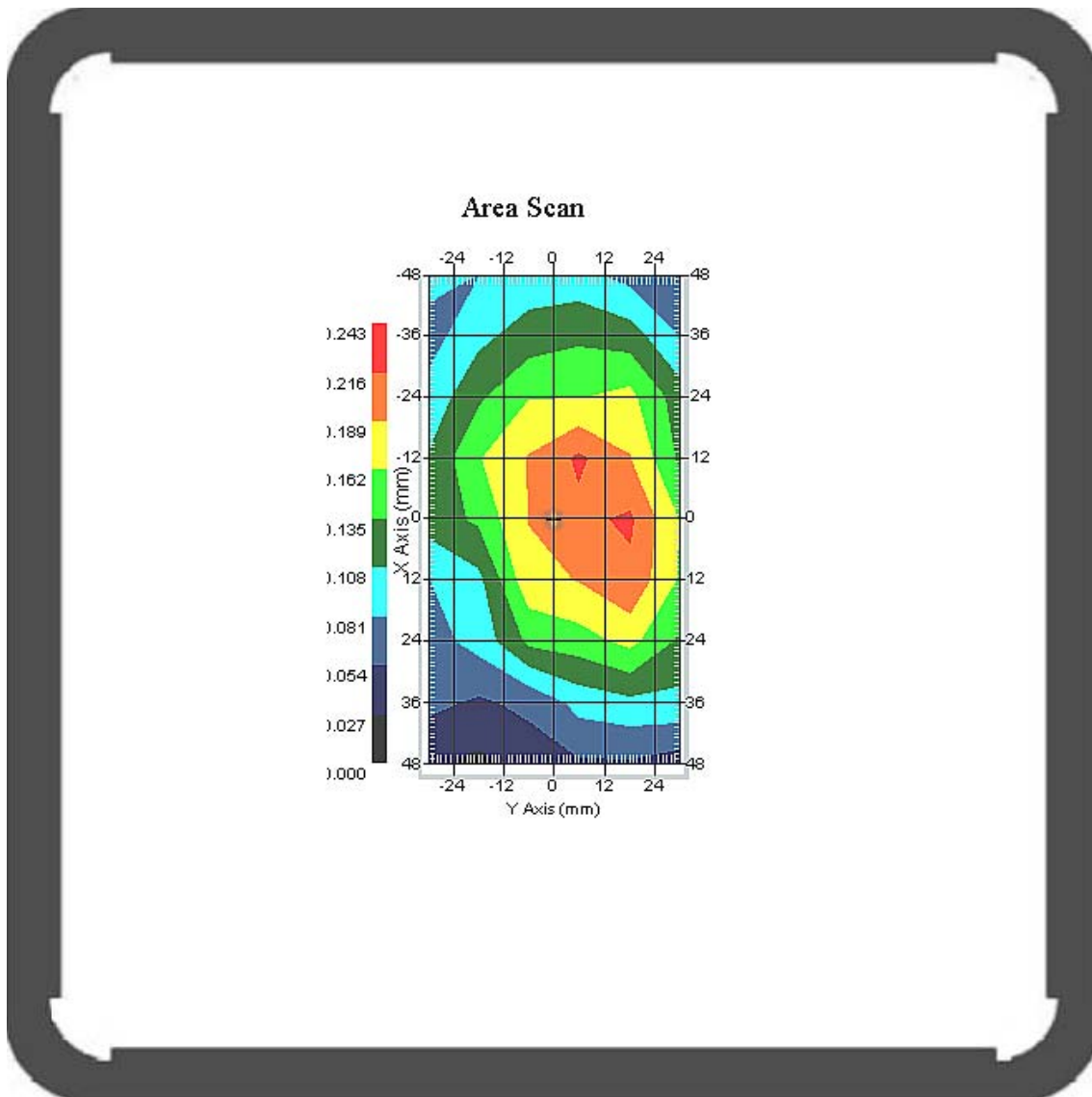
Probe Data

Name : Probe 265
 Model : E020
 Type : E-Field Triangle
 Serial No. : 265
 Last Calib. Date : 09-May-2008
 Frequency : 835.00 MHz
 Duty Cycle Factor: 1
 Conversion Factor: 6.6
 Probe Sensitivity: 1.20 1.20 1.20 $\mu\text{V}/(\text{V}/\text{m})^2$
 Compression Point: 95.00 mV
 Offset : 1.56 mm

Measurement Data

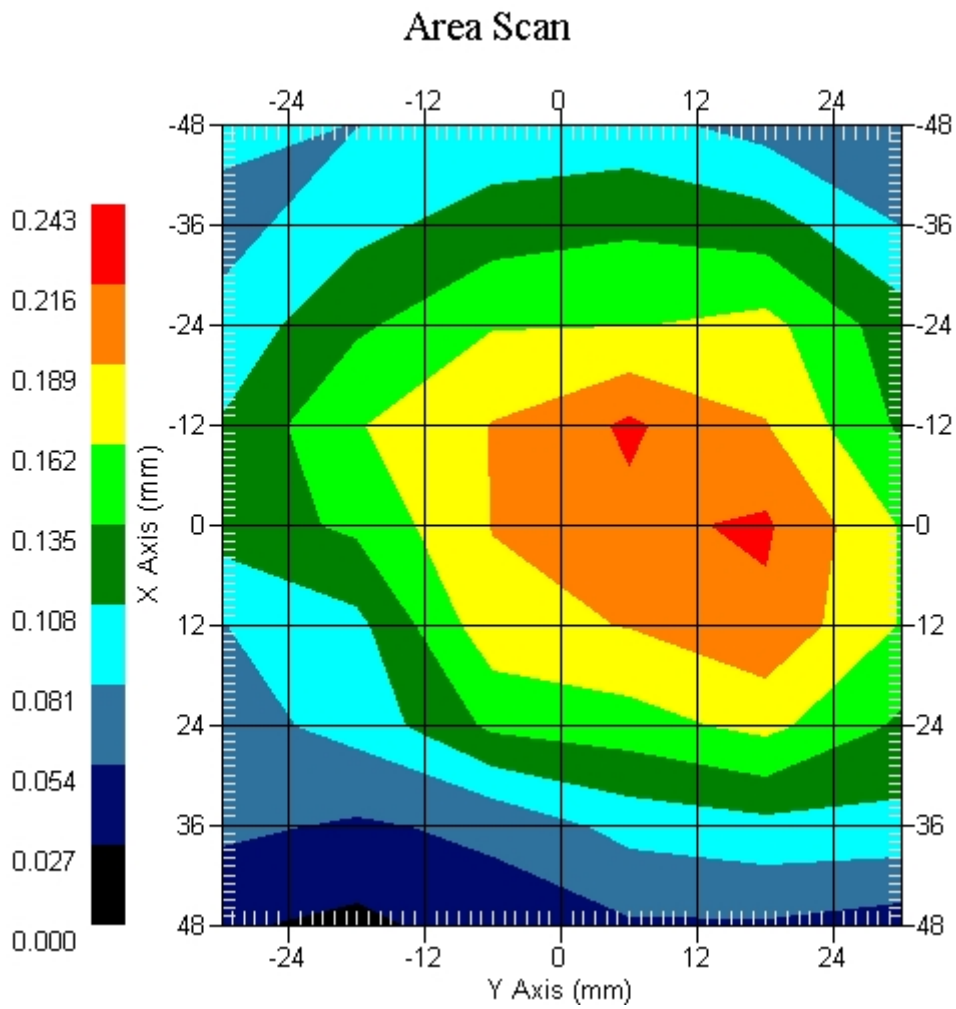
Crest Factor : 1
 Tissue Temp. : 21.20 °C
 Ambient Temp. : 21.80 °C
 Area Scan : 9x6x1 : Measurement x=12mm, y=12mm, z=4mm
 Zoom Scan : 5x5x8 : Measurement x=8mm, y=8mm, z=4mm
 Power Drift-Start : 0.163 W/kg
 Power Drift-Finish: 0.160 W/kg
 Power Drift (%) : -1.891

DUT Position : Touch
 Channel : 4183

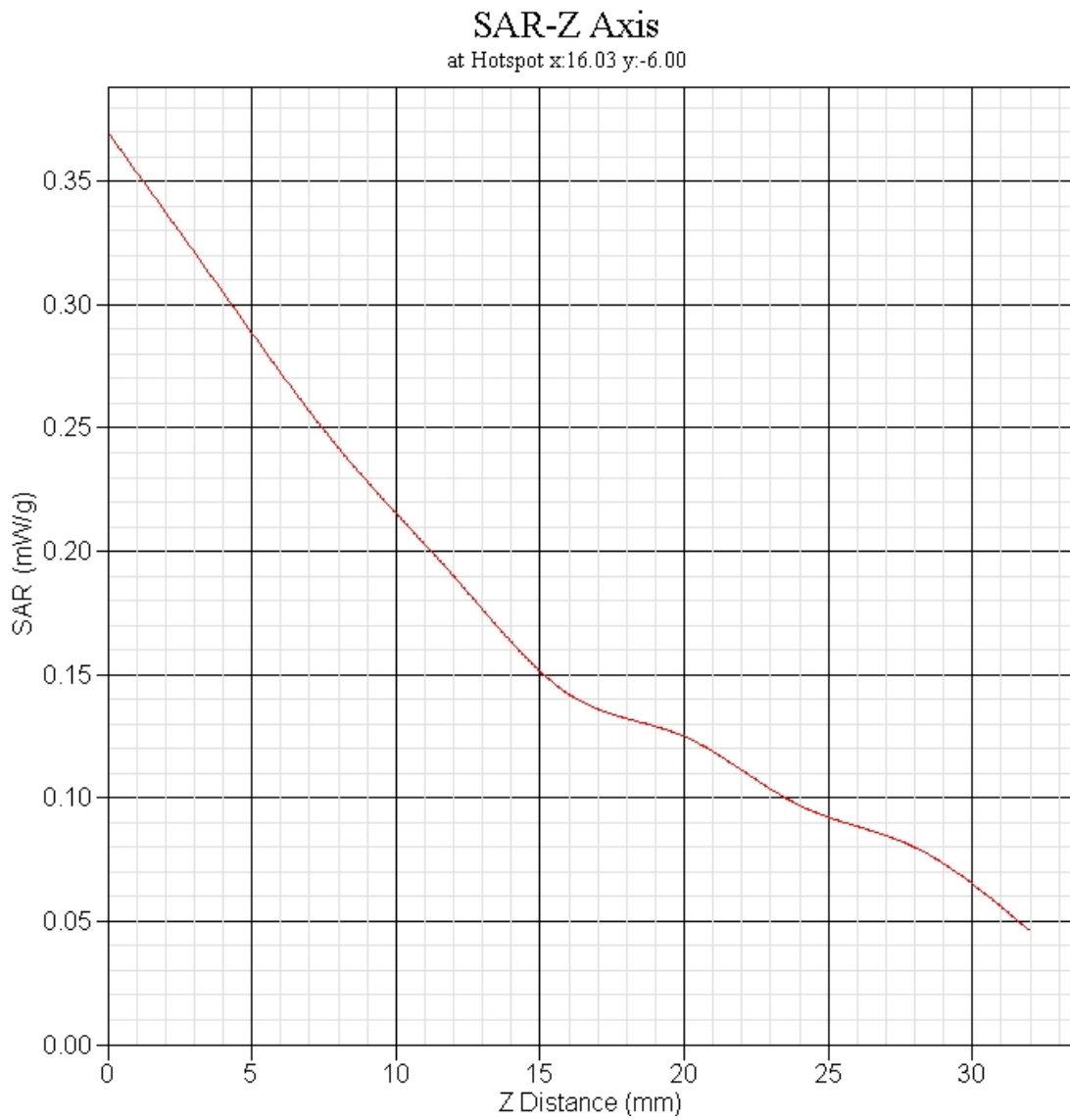


1 gram SAR value : 0.209 W/kg
 10 gram SAR value : 0.145 W/kg
 Area Scan Peak SAR : 0.220 W/kg
 Zoom Scan Peak SAR : 0.345 W/kg

This is previous page plot (zoom in)



WCDMA Band V EUT Left-Cheek, Z-Axis plot
Channel: 4183



SAR measurement Data

ALSAS-10U VER 2.3.6 APREL Laboratories

SAR Test Report-WCDMA Band II

Report Date : 23-Feb-2009
Measurement Date : 23-Feb-2009

Product Data

Device Name : Acer
Type : Std Form Cell Phone
Model : acer & glofiish
Frequency : 1900.00 MHz
Max. Transmit Pwr : 1 W
Drift Time : 0 min(s)
Length : 117.6 mm
Width : 63.5 mm
Depth : 12.9 mm
Antenna Type : Internal

Phantom Data

Type : SAM-Right
Size (mm) : 280 x 280 x 280
Location : Right

Tissue Data

Type : HEAD
Serial No. : 324-H
Frequency : 1900.00 MHz
Last Calib. Date : 23-Feb-2009
Temperature : 21.10 °C
Ambient Temp. : 21.90 °C
Humidity : 53.00 RH%
Epsilon : 40.26 F/m
Sigma : 1.43 S/m
Density : 1000.00 kg/cu. m

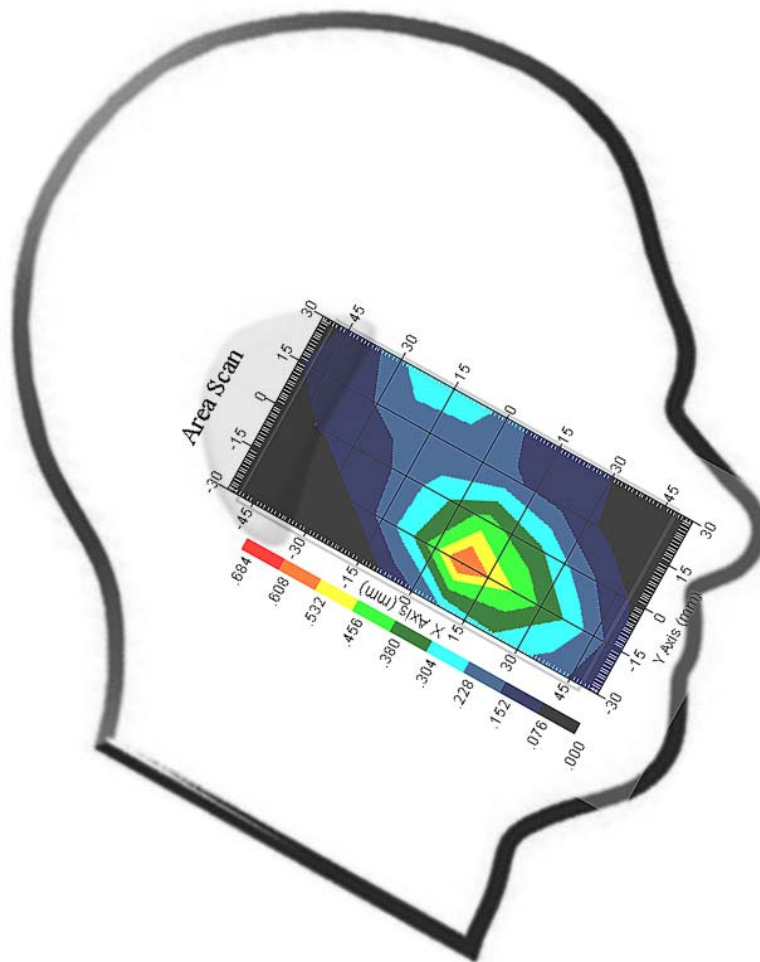
Probe Data

Name : Probe 265
Model : E020
Type : E-Field Triangle
Serial No. : 265
Last Calib. Date : 09-May-2008
Frequency : 1900.00 MHz
Duty Cycle Factor: 1
Conversion Factor: 4.51
Probe Sensitivity: 1.20 1.20 1.20 $\mu\text{V}/(\text{V}/\text{m})^2$
Compression Point: 95.00 mV
Offset : 1.56 mm

Measurement Data

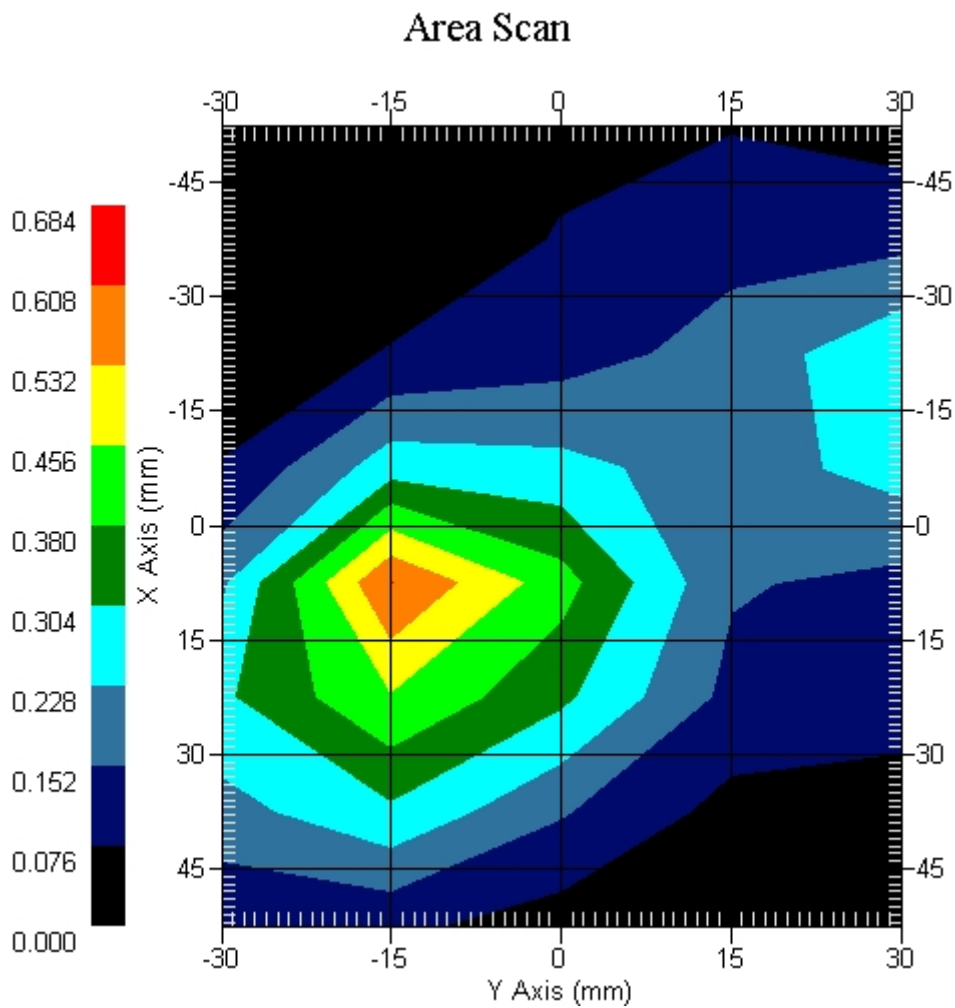
Crest Factor : 1
Tissue Temp. : 21.10 °C
Ambient Temp. : 21.90 °C
Area Scan : 7x5x1 : Measurement x=15mm, y=15mm, z=4mm
Zoom Scan : 5x5x8 : Measurement x=8mm, y=8mm, z=4mm
Power Drift-Start : 0.041 W/kg
Power Drift-Finish: 0.040 W/kg
Power Drift (%) : -2.439

DUT Position : Touch
Channel : 9262



1 gram SAR value : 0.589 W/kg
10 gram SAR value : 0.276 W/kg
Area Scan Peak SAR : 0.610 W/kg
Zoom Scan Peak SAR : 0.762 W/kg

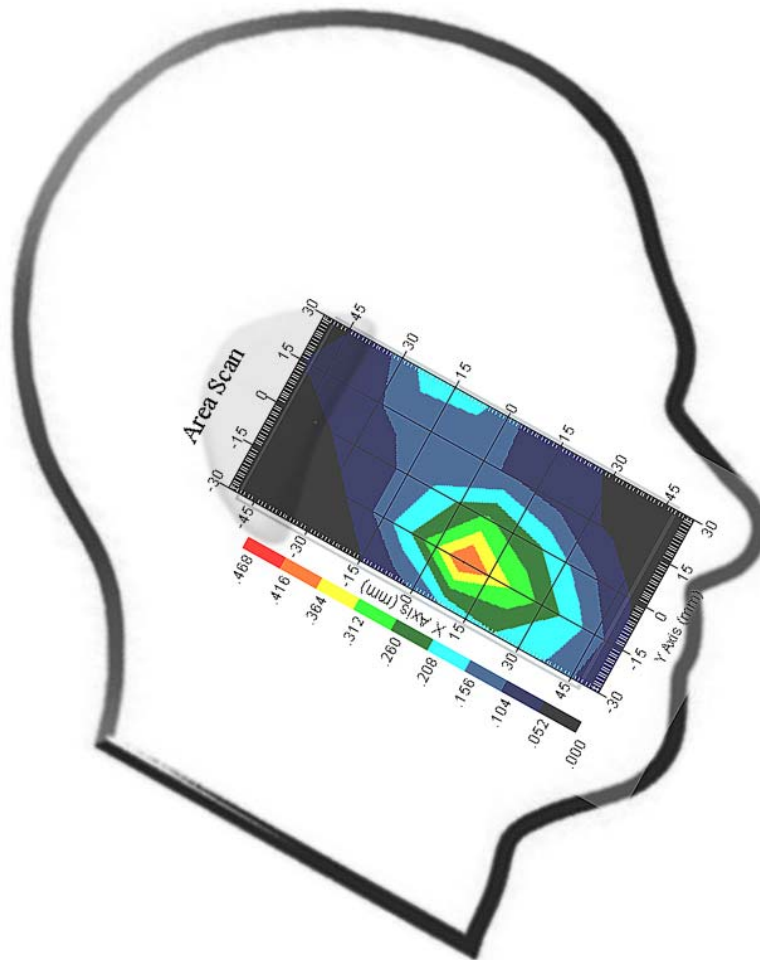
This is previous page plot (zoom in)



Measurement Data

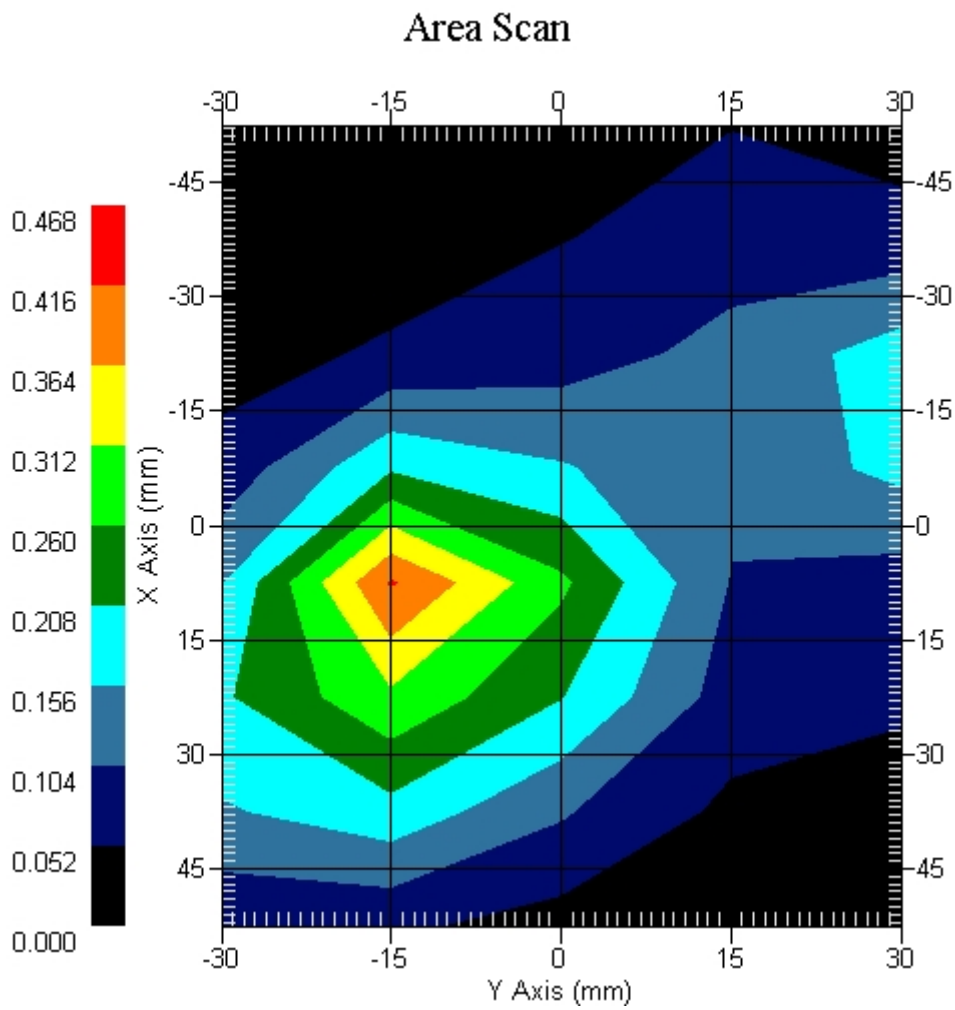
Crest Factor : 1
Tissue Temp. : 21.10 °C
Ambient Temp. : 21.90 °C
Area Scan : 8x5x1 : Measurement x=15mm, y=15mm, z=4mm
Zoom Scan : 5x5x8 : Measurement x=8mm, y=8mm, z=4mm
Power Drift-Start : 0.044 W/kg
Power Drift-Finish: 0.046 W/kg
Power Drift (%) : 3.285

DUT Position : Touch
Channel : 9400



1 gram SAR value : 0.382 W/kg
10 gram SAR value : 0.198 W/kg
Area Scan Peak SAR : 0.420 W/kg
Zoom Scan Peak SAR : 0.544 W/kg

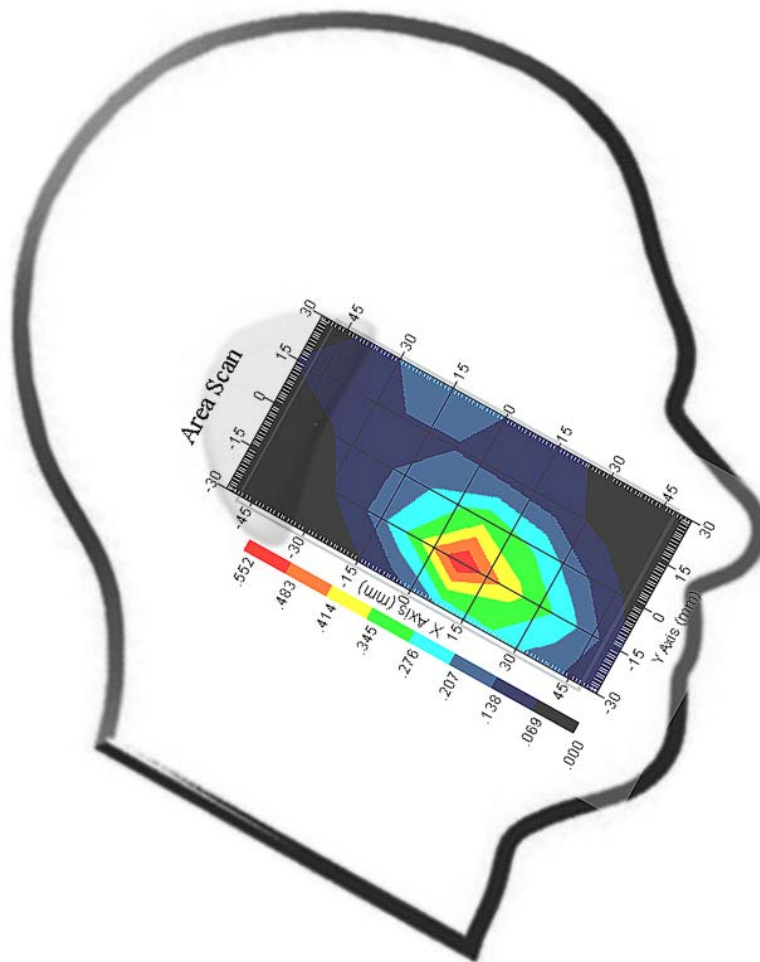
This is previous page plot (zoom in)



Measurement Data

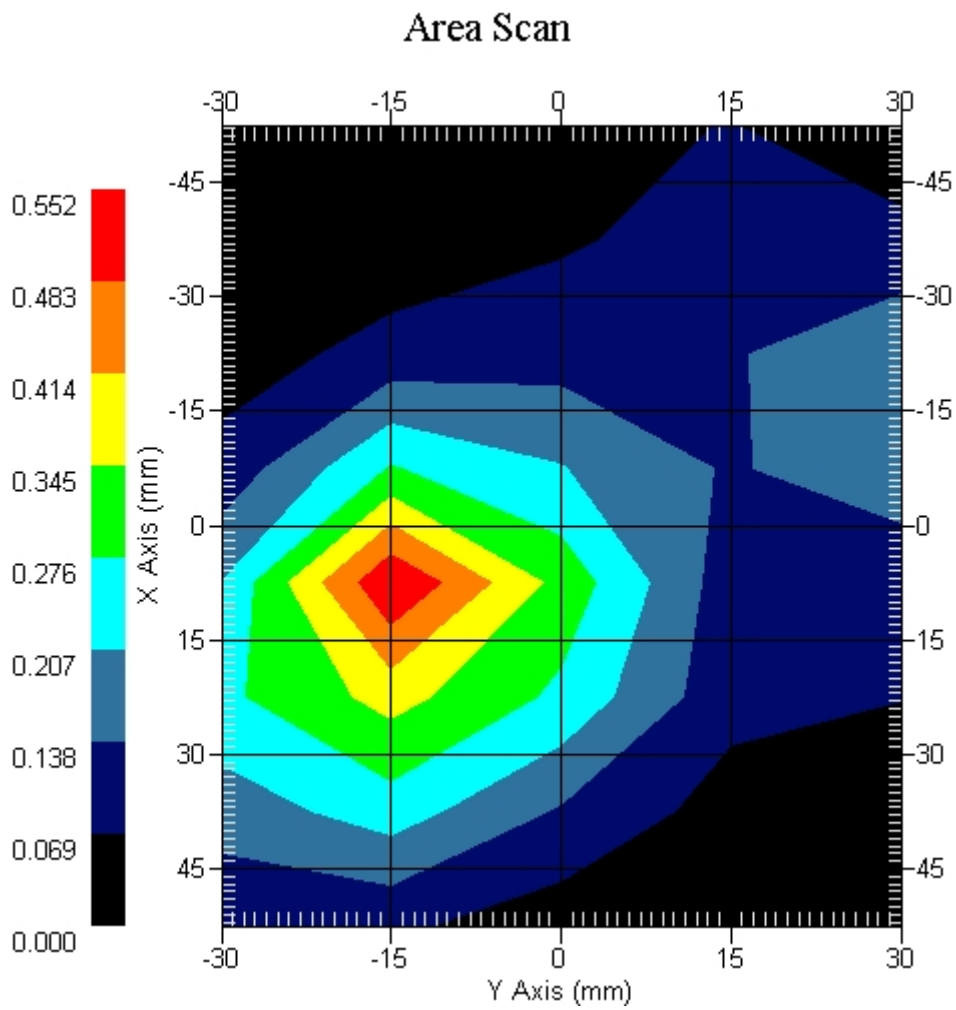
Crest Factor : 1
Tissue Temp. : 21.10 °C
Ambient Temp. : 21.90 °C
Area Scan : 8x5x1 : Measurement x=15mm, y=15mm, z=4mm
Zoom Scan : 5x5x8 : Measurement x=8mm, y=8mm, z=4mm
Power Drift-Start : 0.062 W/kg
Power Drift-Finish: 0.062 W/kg
Power Drift (%) : 0.612

DUT Position : Touch
Channel : 9538



1 gram SAR value : 0.525 W/kg
10 gram SAR value : 0.217 W/kg
Area Scan Peak SAR : 0.550 W/kg
Zoom Scan Peak SAR : 0.595 W/kg

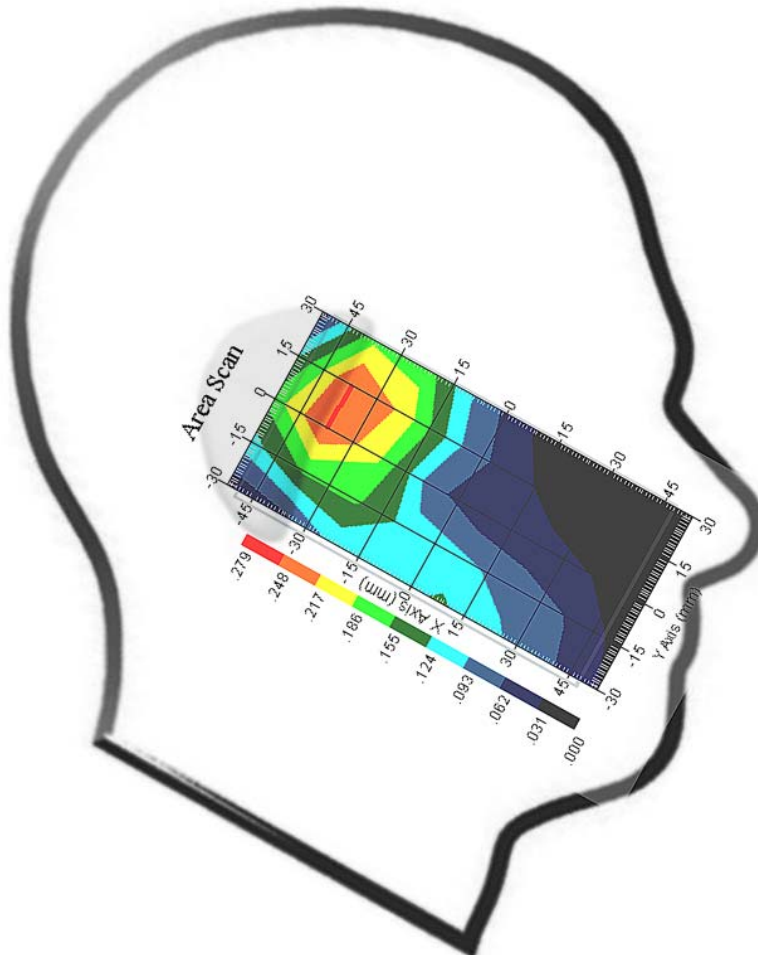
This is previous page plot (zoom in)



Measurement Data

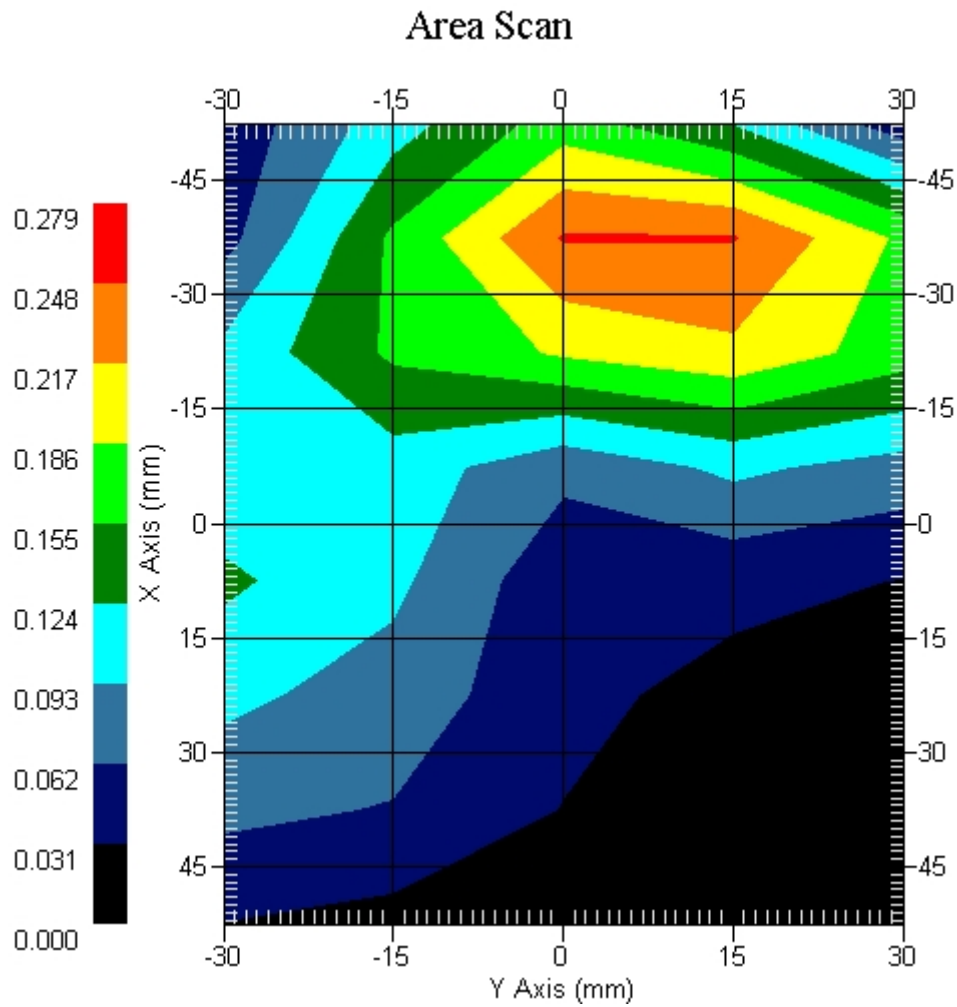
Crest Factor : 1
Scan Type : Complete
Tissue Temp. : 21.10 °C
Ambient Temp. : 21.90 °C
Area Scan : 8x5x1 : Measurement x=15mm, y=15mm, z=4mm
Zoom Scan : 5x5x8 : Measurement x=8mm, y=8mm, z=4mm
Power Drift-Start : 0.170 W/kg
Power Drift-Finish: 0.166 W/kg
Power Drift (%) : -2.325

DUT Position : 15° Tilt
Channel : 9262



1 gram SAR value : 0.236 W/kg
10 gram SAR value : 0.162 W/kg
Area Scan Peak SAR : 0.250 W/kg
Zoom Scan Peak SAR : 0.458 W/kg

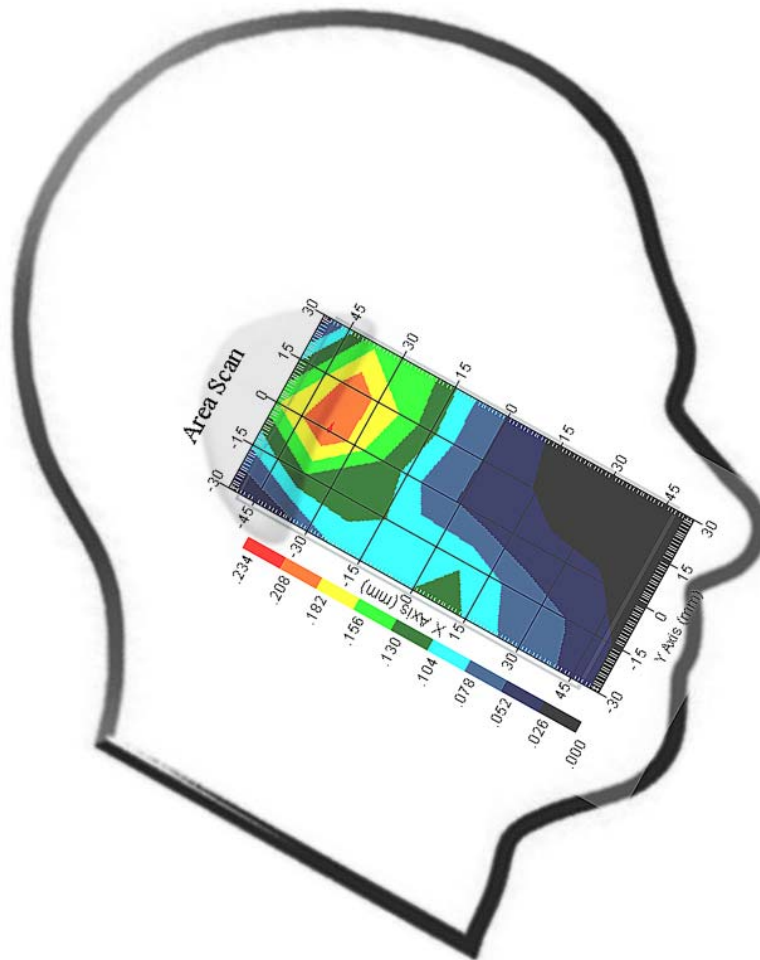
This is previous page plot (zoom in)



Measurement Data

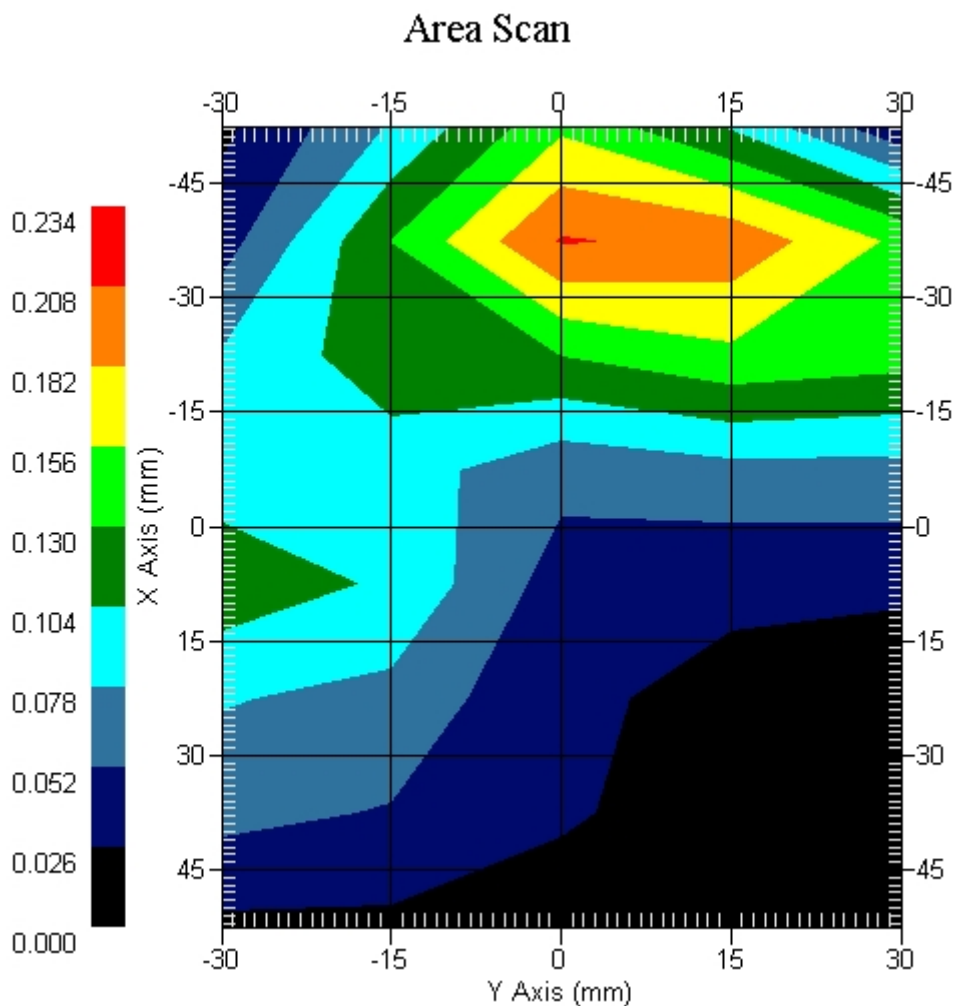
Crest Factor : 1
Tissue Temp. : 21.10 °C
Ambient Temp. : 21.90 °C
Area Scan : 8x5x1 : Measurement x=15mm, y=15mm, z=4mm
Zoom Scan : 5x5x8 : Measurement x=8mm, y=8mm, z=4mm
Power Drift-Start : 0.128 W/kg
Power Drift-Finish: 0.128 W/kg
Power Drift (%) : 0.828

DUT Position : 15° Tilt
Channel : 9400



1 gram SAR value : 0.185 W/kg
10 gram SAR value : 0.094 W/kg
Area Scan Peak SAR : 0.200 W/kg
Zoom Scan Peak SAR : 0.360 W/kg

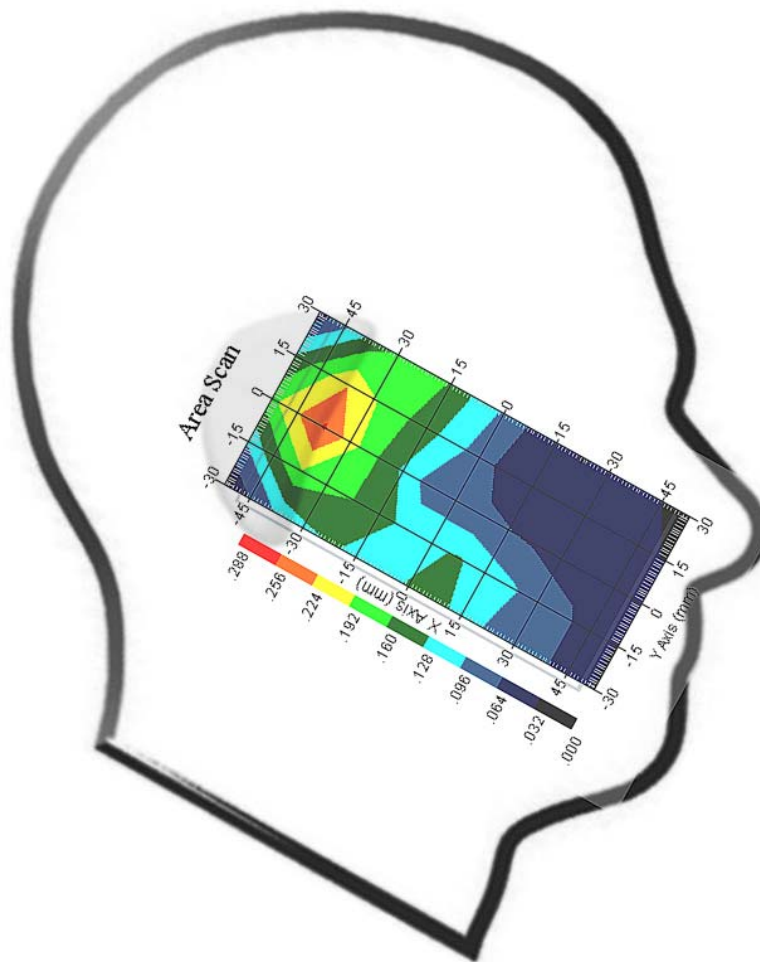
This is previous page plot (zoom in)



Measurement Data

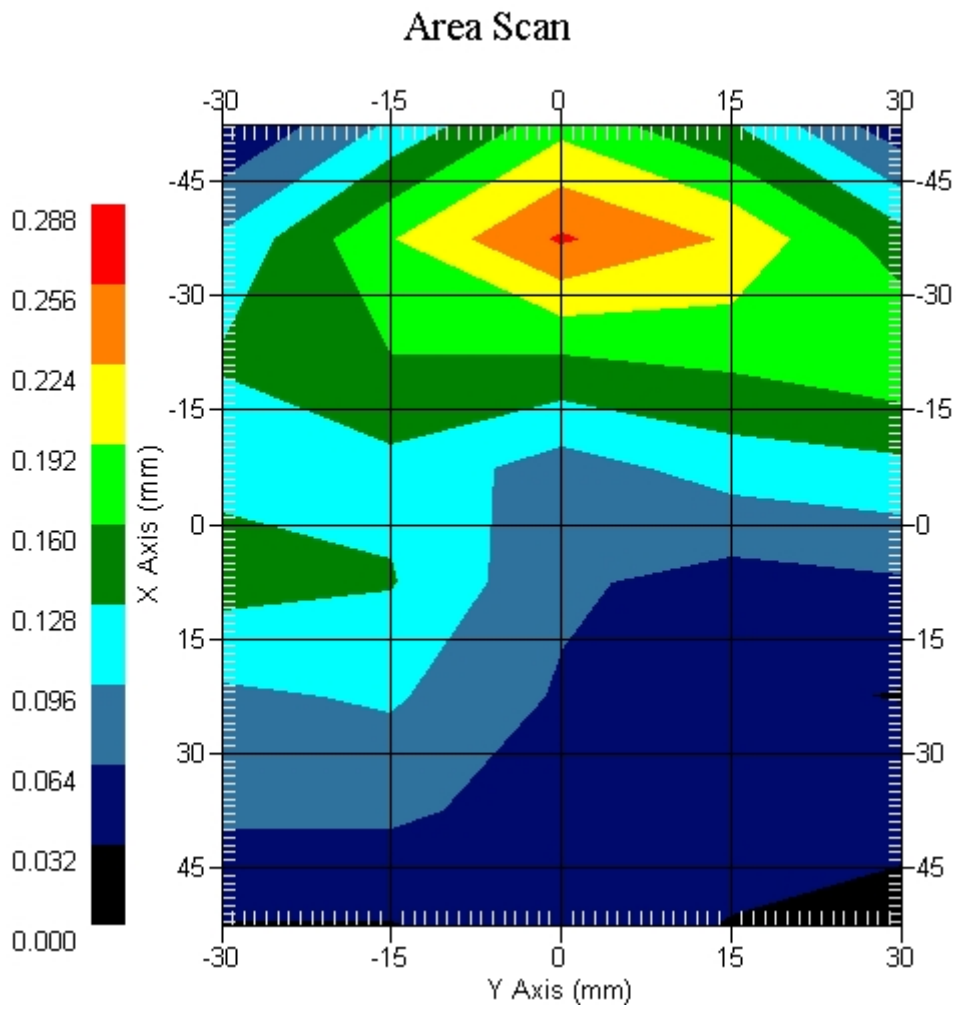
Crest Factor : 1
Tissue Temp. : 21.10 °C
Ambient Temp. : 21.90 °C
Area Scan : 8x5x1 : Measurement x=15mm, y=15mm, z=4mm
Zoom Scan : 5x5x8 : Measurement x=8mm, y=8mm, z=4mm
Power Drift-Start : 0.164 W/kg
Power Drift-Finish: 0.164 W/kg
Power Drift (%) : -0.007

DUT Position : 15° Tilt
Channel : 9538



1 gram SAR value : 0.245 W/kg
10 gram SAR value : 0.183 W/kg
Area Scan Peak SAR : 0.260 W/kg
Zoom Scan Peak SAR : 0.480 W/kg

This is previous page plot (zoom in)



ALSAS-10U VER 2.3.6 APREL Laboratories

SAR Test Report-WCDMA Band II

Report Date : 23-Feb-2009
Measurement Date : 23-Feb-2009

Product Data

Device Name : Acer
Type : Std Form Cell Phone
Model : acer & glofiish
Frequency : 1900.00 MHz
Max. Transmit Pwr : 1 W
Drift Time : 0 min(s)
Length : 117.6 mm
Width : 63.5 mm
Depth : 12.9 mm
Antenna Type : Internal

Phantom Data

Type : SAM-Right
Size (mm) : 280 x 280 x 280
Location : Right

Tissue Data

Type : HEAD
Serial No. : 324-H
Frequency : 1900.00 MHz
Last Calib. Date : 23-Feb-2009
Temperature : 21.10 °C
Ambient Temp. : 21.90 °C
Humidity : 53.00 RH%
Epsilon : 40.26 F/m
Sigma : 1.43 S/m
Density : 1000.00 kg/cu. m

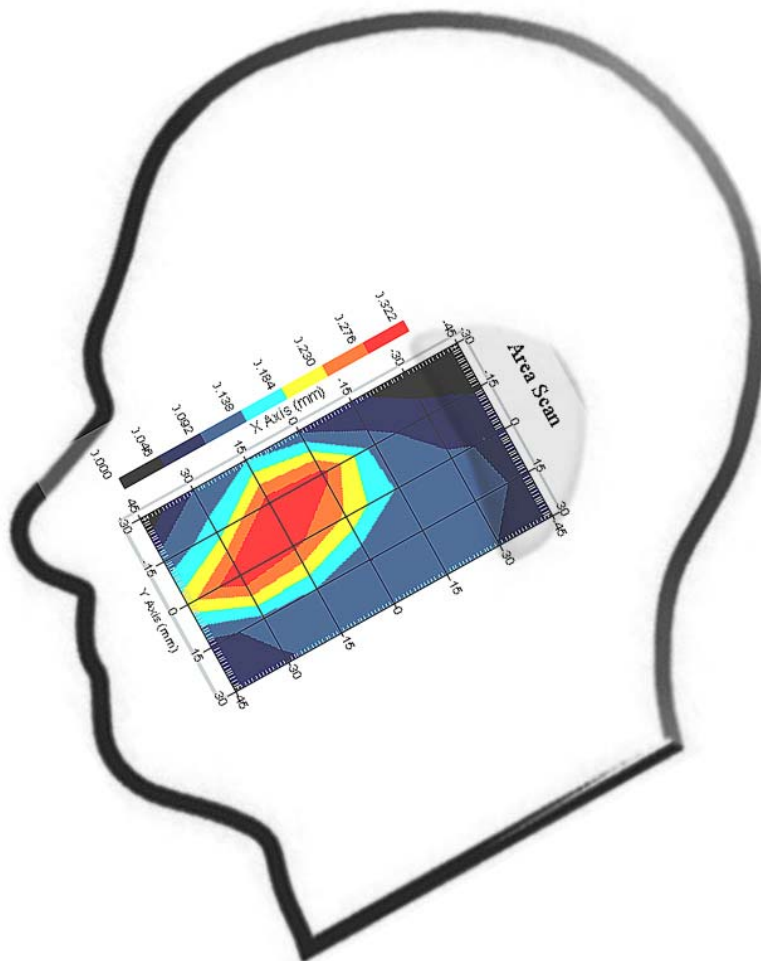
Probe Data

Name : Probe 265
Model : E020
Type : E-Field Triangle
Serial No. : 265
Last Calib. Date : 09-May-2008
Frequency : 1900.00 MHz
Duty Cycle Factor: 1
Conversion Factor: 4.51
Probe Sensitivity: 1.20 1.20 1.20 $\mu\text{V}/(\text{V}/\text{m})^2$
Compression Point: 95.00 mV
Offset : 1.56 mm

Measurement Data

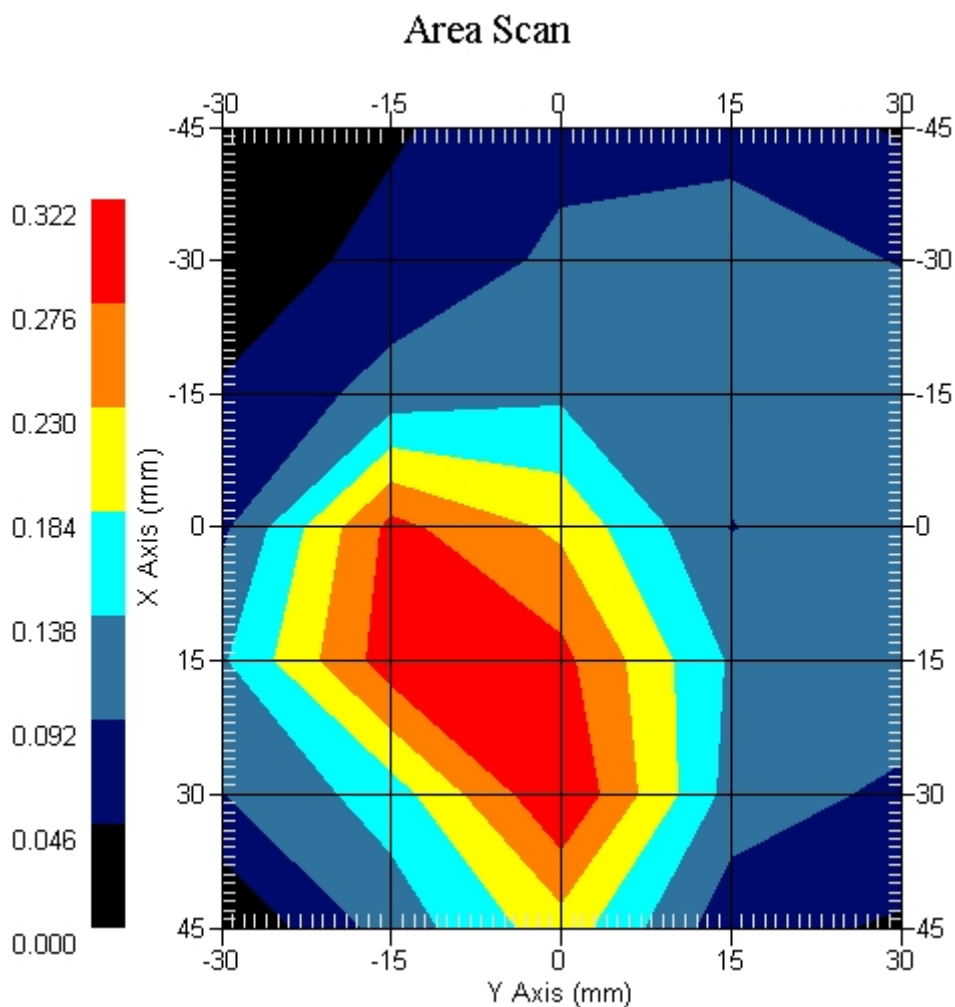
Crest Factor : 1
Tissue Temp. : 21.10 °C
Ambient Temp. : 21.90 °C
Area Scan : 7x5x1 : Measurement x=15mm, y=15mm, z=4mm
Zoom Scan : 5x5x8 : Measurement x=8mm, y=8mm, z=4mm
Power Drift-Start : 0.041 W/kg
Power Drift-Finish: 0.040 W/kg
Power Drift (%) : -2.439

DUT Position : Touch
Channel : 9262



1 gram SAR value : 0.302 W/kg
10 gram SAR value : 0.218 W/kg
Area Scan Peak SAR : 0.320 W/kg
Zoom Scan Peak SAR : 0.416 W/kg

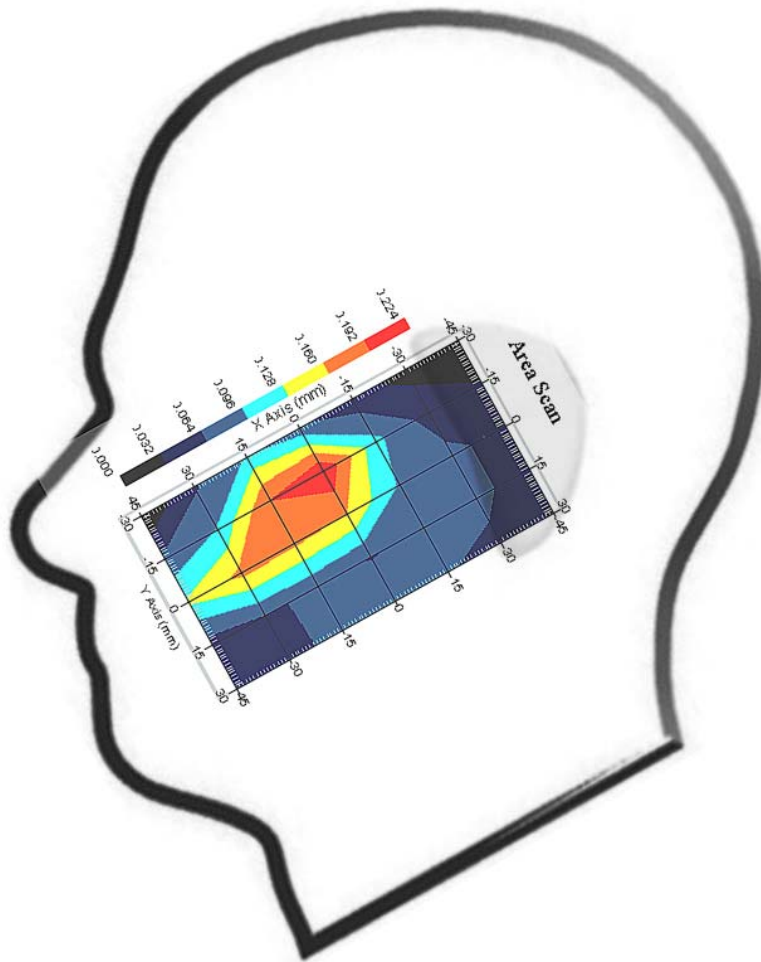
This is previous page plot (zoom in)



Measurement Data

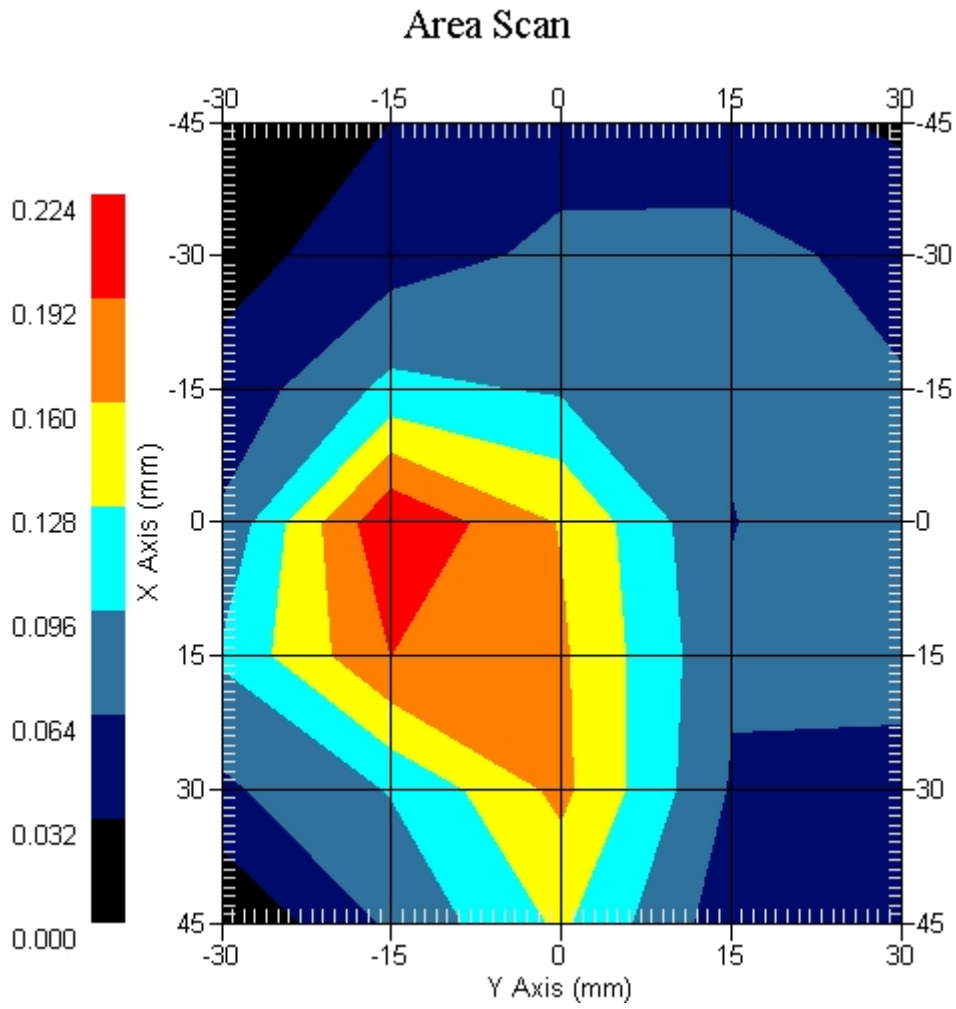
Crest Factor : 1
Tissue Temp. : 21.10 °C
Ambient Temp. : 21.90 °C
Area Scan : 7x5x1 : Measurement x=15mm, y=15mm, z=4mm
Zoom Scan : 5x5x8 : Measurement x=8mm, y=8mm, z=4mm
Power Drift-Start : 0.035 W/kg
Power Drift-Finish: 0.035 W/kg
Power Drift (%) : -0.235

DUT Position : Touch
Channel : 9400



1 gram SAR value : 0.205 W/kg
10 gram SAR value : 0.118 W/kg
Area Scan Peak SAR : 0.221 W/kg
Zoom Scan Peak SAR : 0.320 W/kg

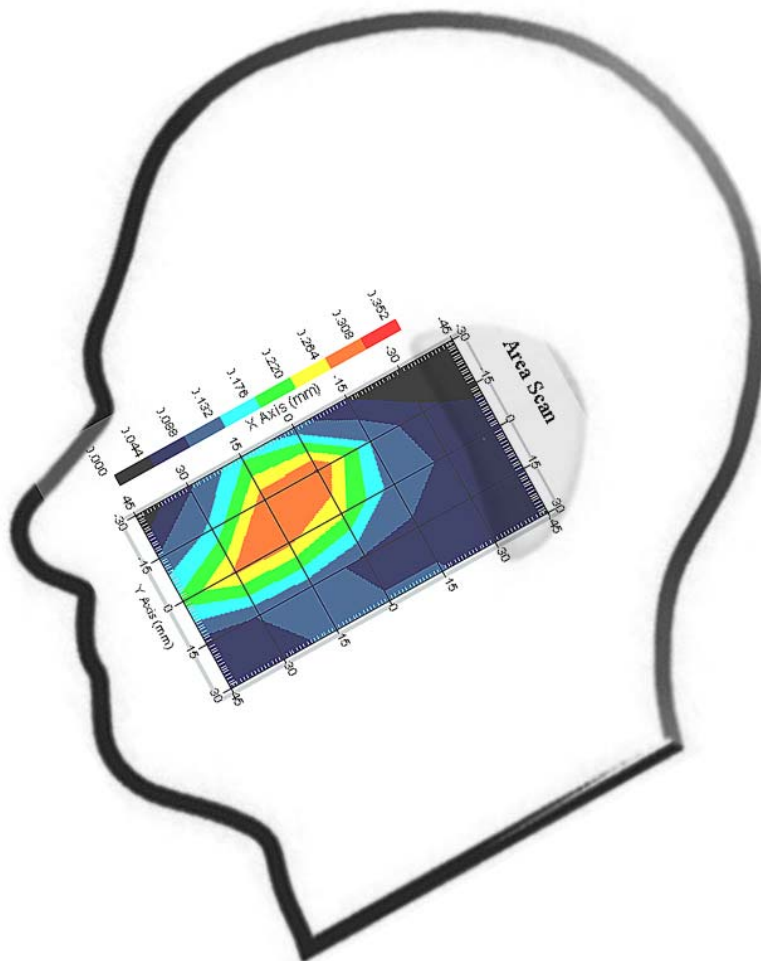
This is previous page plot (zoom in)



Measurement Data

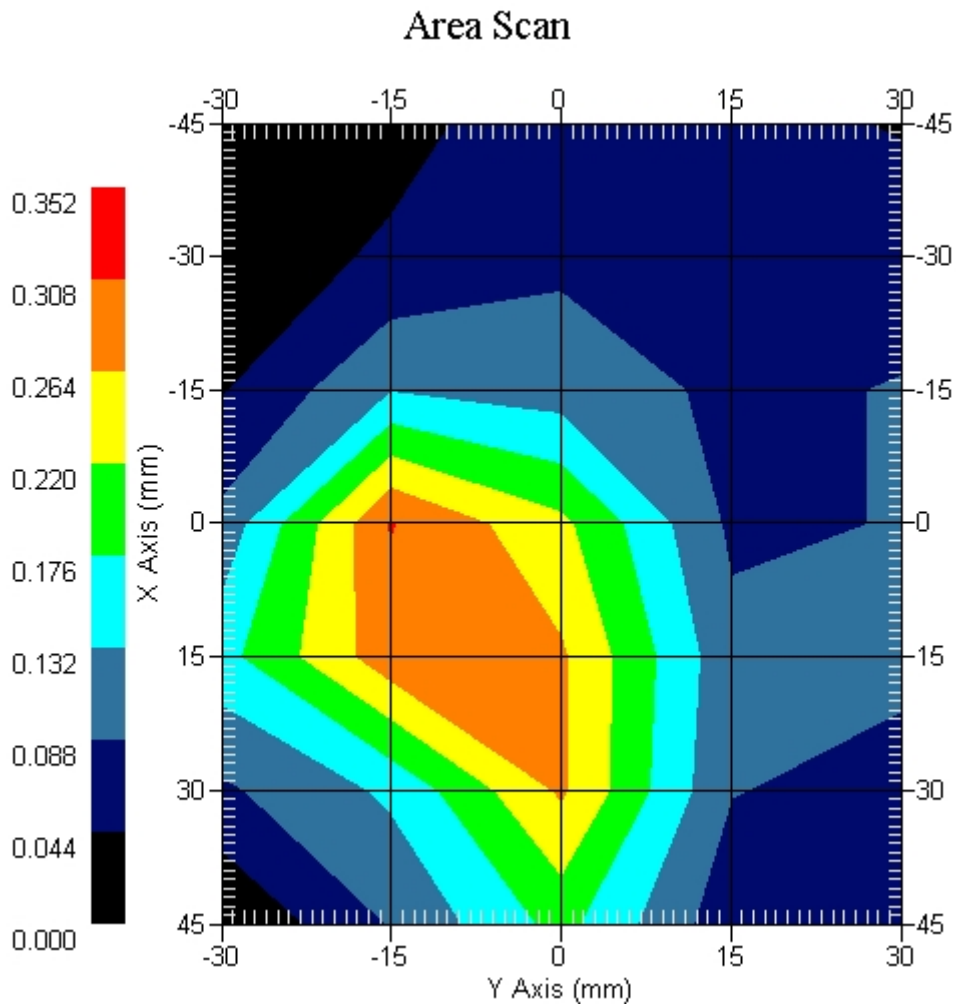
Crest Factor : 1
Tissue Temp. : 21.10 °C
Ambient Temp. : 21.90 °C
Area Scan : 7x5x1 : Measurement x=15mm, y=15mm, z=4mm
Zoom Scan : 5x5x8 : Measurement x=8mm, y=8mm, z=4mm
Power Drift-Start : 0.044 W/kg
Power Drift-Finish: 0.045 W/kg
Power Drift (%) : 2.272

DUT Position : Touch
Channel : 9538



1 gram SAR value : 0.286 W/kg
10 gram SAR value : 0.193 W/kg
Area Scan Peak SAR : 0.310 W/kg
Zoom Scan Peak SAR : 0.387 W/kg

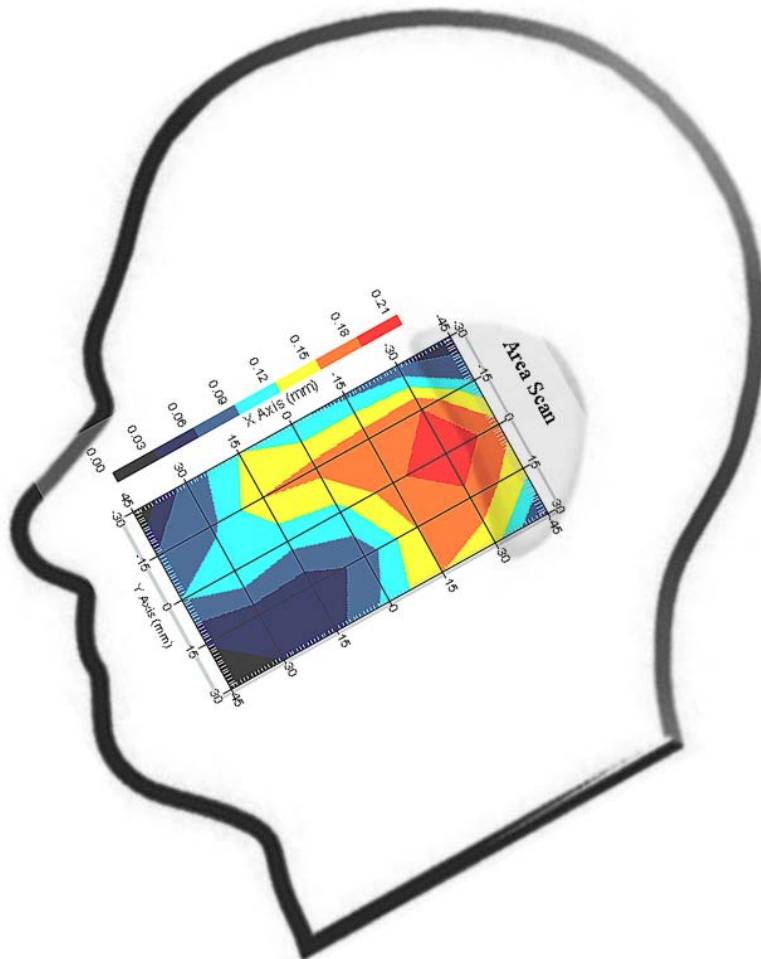
This is previous page plot (zoom in)



Measurement Data

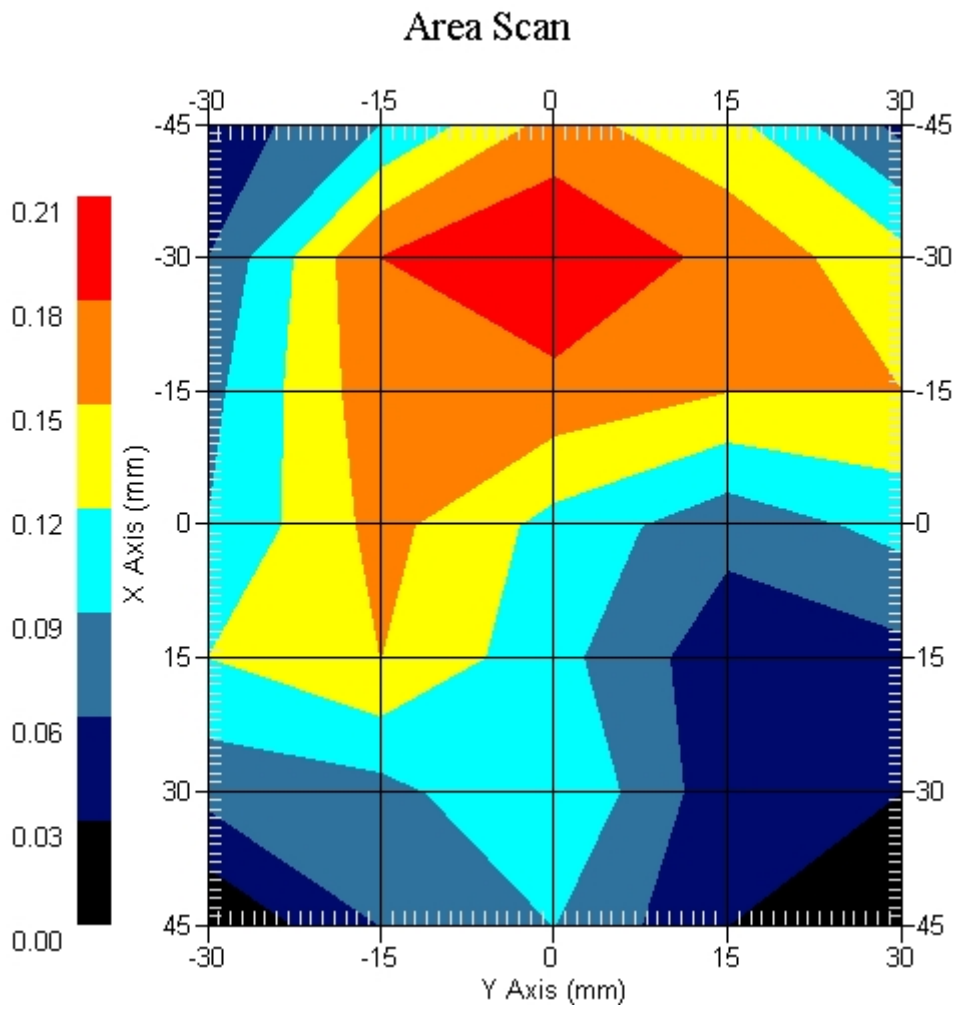
Crest Factor : 1
Tissue Temp. : 21.10 °C
Ambient Temp. : 21.90 °C
Area Scan : 7x5x1 : Measurement x=15mm, y=15mm, z=4mm
Zoom Scan : 5x5x8 : Measurement x=8mm, y=8mm, z=4mm
Power Drift-Start : 0.186 W/kg
Power Drift-Finish: 0.191 W/kg
Power Drift (%) : 2.559

DUT Position : 15° Tilt
Channel : 9262



1 gram SAR value : 0.193 W/kg
10 gram SAR value : 0.137 W/kg
Area Scan Peak SAR : 0.210 W/kg
Zoom Scan Peak SAR : 0.269 W/kg

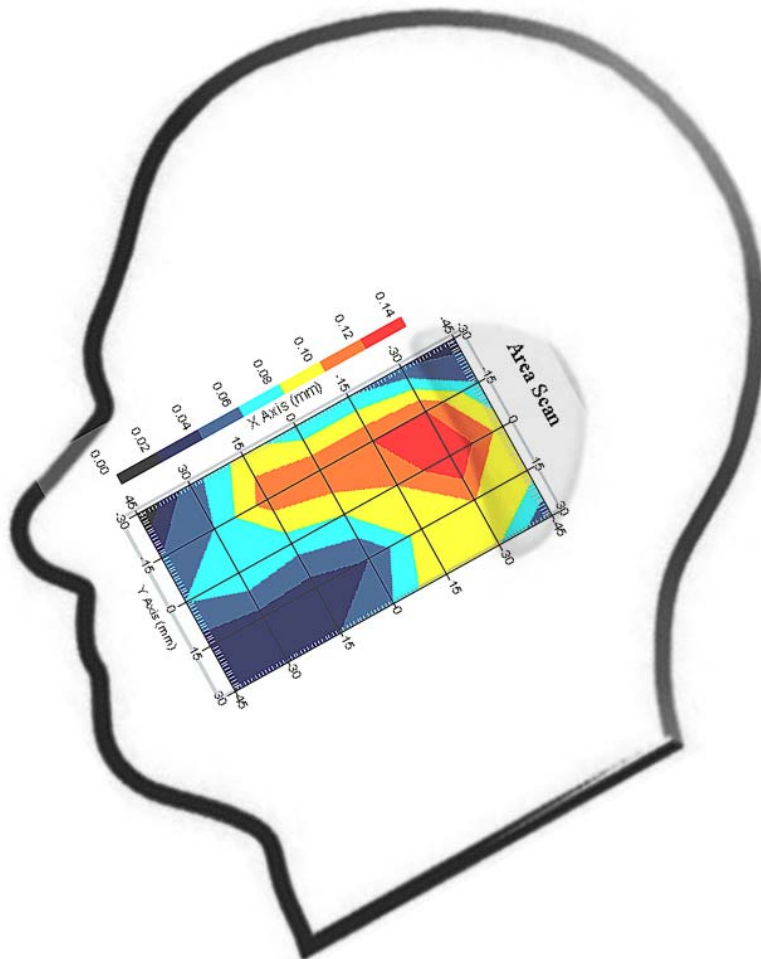
This is previous page plot (zoom in)



Measurement Data

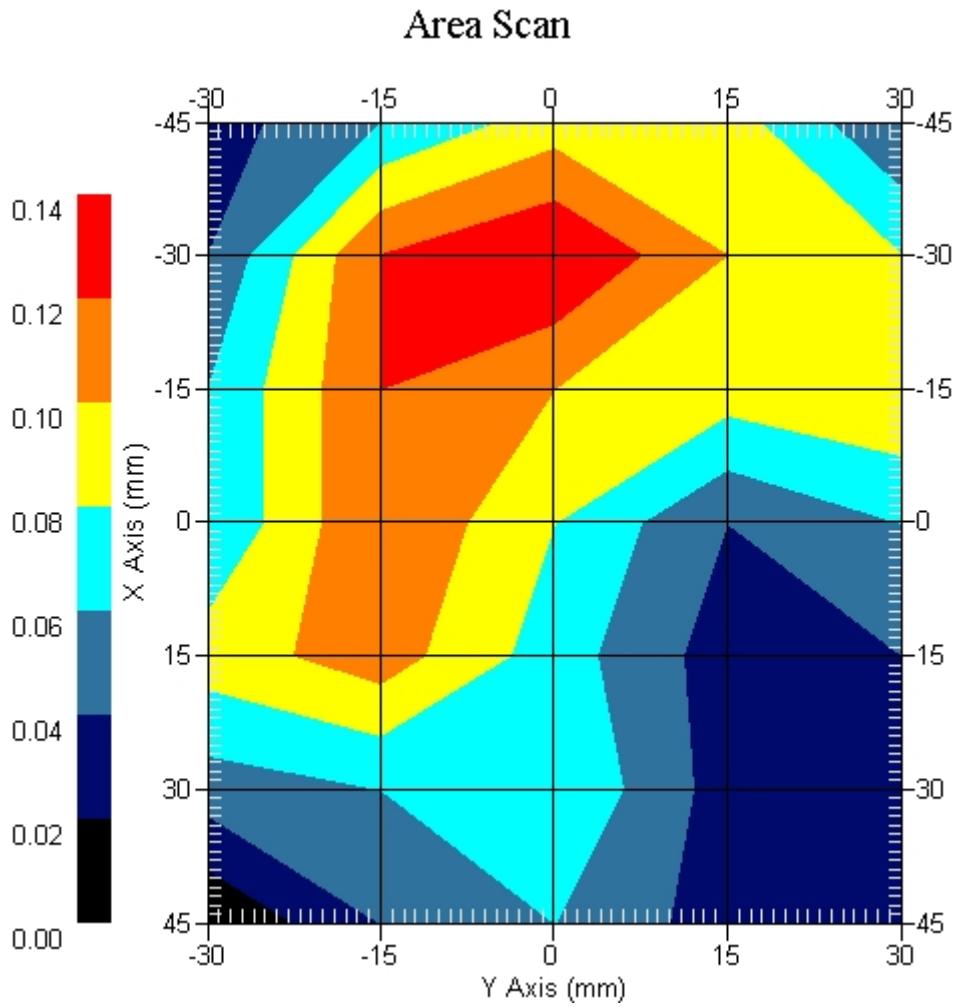
Crest Factor : 1
Tissue Temp. : 21.10 °C
Ambient Temp. : 21.90 °C
Area Scan : 7x5x1 : Measurement x=15mm, y=15mm, z=4mm
Zoom Scan : 5x5x8 : Measurement x=8mm, y=8mm, z=4mm
Power Drift-Start : 0.125 W/kg
Power Drift-Finish: 0.122 W/kg
Power Drift (%) : -2.400

DUT Position : 15° Tilt
Channel : 9400



1 gram SAR value : 0.126 W/kg
10 gram SAR value : 0.072 W/kg
Area Scan Peak SAR : 0.140 W/kg
Zoom Scan Peak SAR : 0.193 W/kg

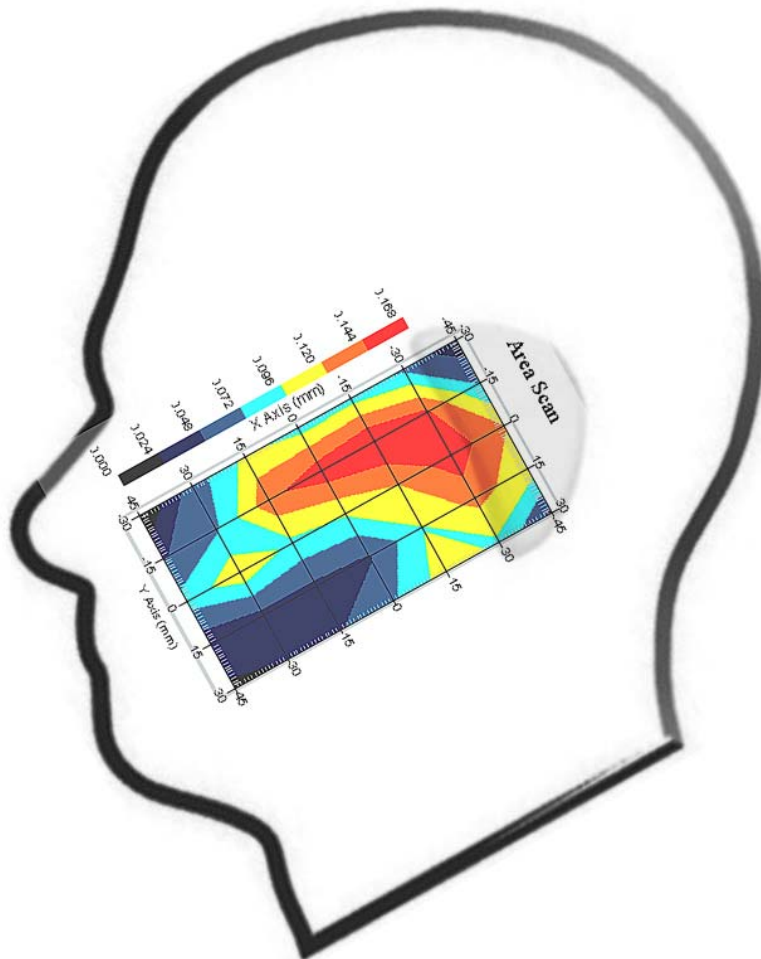
This is previous page plot (zoom in)



Measurement Data

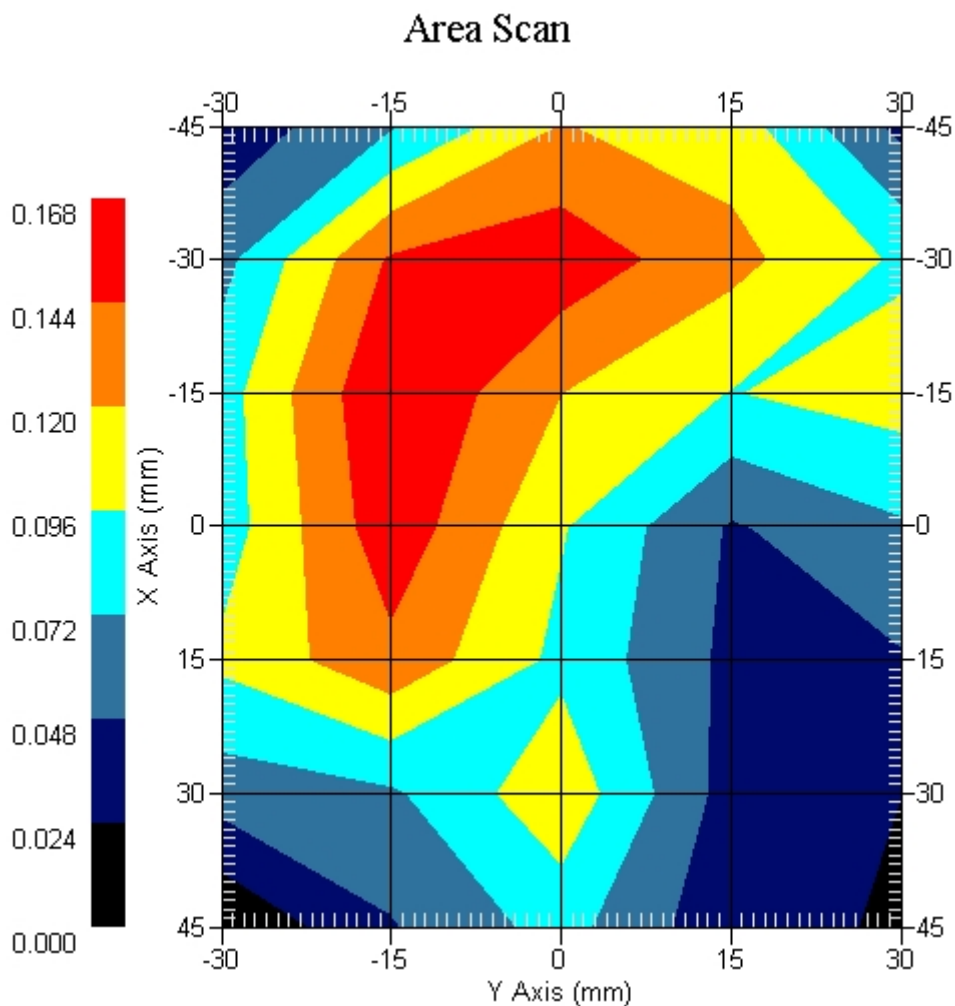
Crest Factor : 1
Tissue Temp. : 21.10 °C
Ambient Temp. : 21.90 °C
Area Scan : 7x5x1 : Measurement x=15mm, y=15mm, z=4mm
Zoom Scan : 5x5x8 : Measurement x=8mm, y=8mm, z=4mm
Power Drift-Start : 0.146 W/kg
Power Drift-Finish: 0.150 W/kg
Power Drift (%) : 2.691

DUT Position : 15° Tilt
Channel : 9538



1 gram SAR value : 0.157 W/kg
10 gram SAR value : 0.096 W/kg
Area Scan Peak SAR : 0.168 W/kg
Zoom Scan Peak SAR : 0.230 W/kg

This is previous page plot (zoom in)



ALSAS-10U VER 2.3.6 APREL Laboratories
SAR Test Report-WCDMA Band IIReport Date : 23-Feb-2009
Measurement Date : 23-Feb-2009

Product Data

Device Name : Acer
Type : Std Form Cell Phone
Model : acer & glofiish
Frequency : 1900.00 MHz
Max. Transmit Pwr : 1 W
Drift Time : 0 min(s)
Length : 117.6 mm
Width : 63.5 mm
Depth : 12.9 mm
Antenna Type : Internal

Phantom Data

Type : Uni-Phantom
Size (mm) : 280 x 280 x 200
Location : Center

Tissue Data

Type : BODY
Serial No. : 324-B
Frequency : 1900.00 MHz
Last Calib. Date : 23-Feb-2009
Temperature : 21.10 °C
Ambient Temp. : 21.90 °C
Humidity : 53.00 RH%
Epsilon : 54.22 F/m
Sigma : 1.57 S/m
Density : 1000.00 kg/cu. m

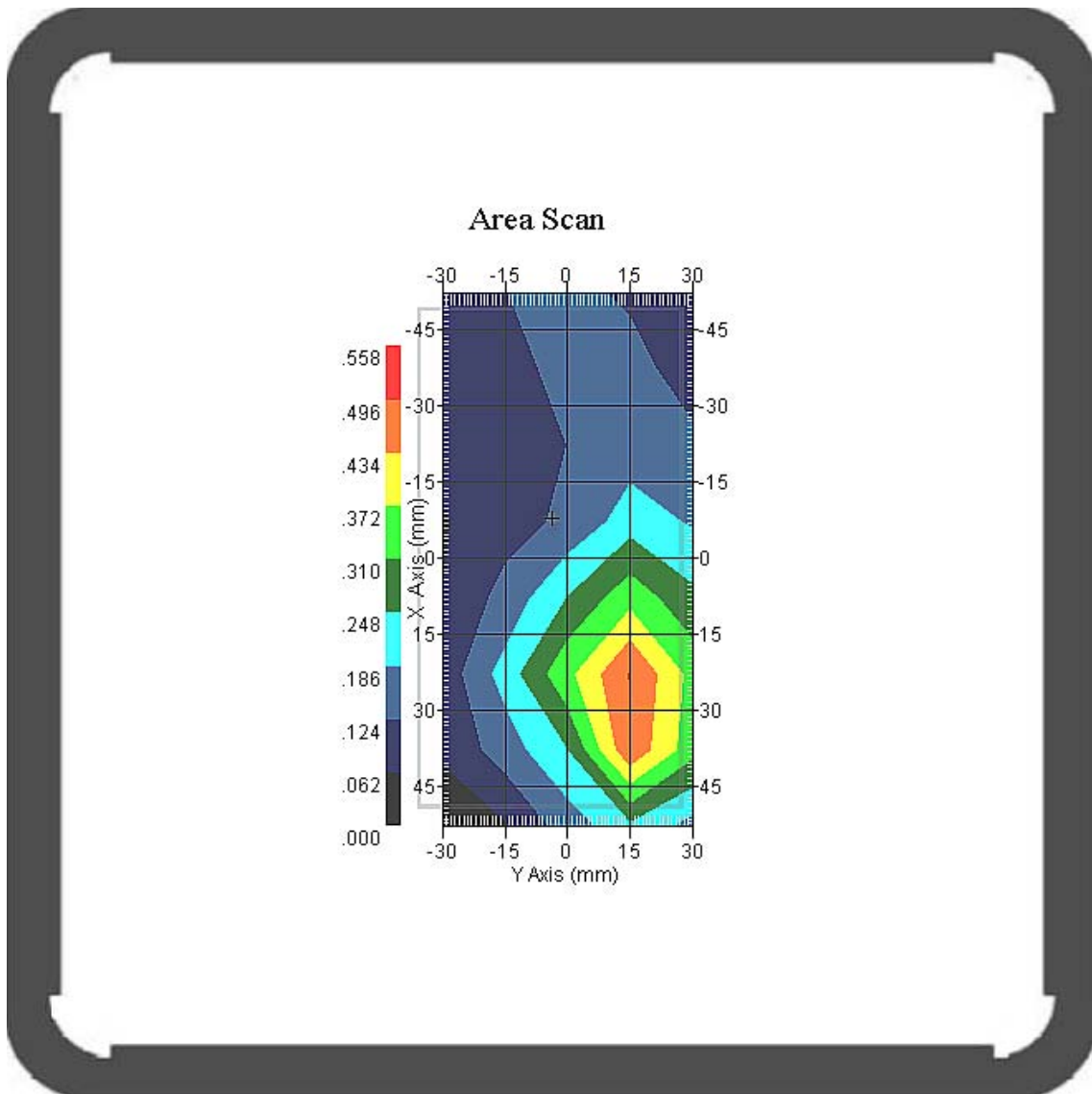
Probe Data

Name : Probe 265
Model : E020
Type : E-Field Triangle
Serial No. : 265
Last Calib. Date : 09-May-2008
Frequency : 1900.00 MHz
Duty Cycle Factor: 1
Conversion Factor: 5.1
Probe Sensitivity: 1.20 1.20 1.20 $\mu\text{V}/(\text{V}/\text{m})^2$
Compression Point: 95.00 mV
Offset : 1.56 mm

Measurement Data

Crest Factor : 1
 Tissue Temp. : 21.10 °C
 Ambient Temp. : 21.90 °C
 Area Scan : 8x5x1 : Measurement x=15mm, y=15mm, z=4mm
 Zoom Scan : 5x5x8 : Measurement x=8mm, y=8mm, z=4mm
 Power Drift-Start : 0.118 W/kg
 Power Drift-Finish: 0.121 W/kg
 Power Drift (%) : 2.610

DUT Position : Touch
 Channel : 9262



1 gram SAR value : 0.392 W/kg
 10 gram SAR value : 0.275 W/kg
 Area Scan Peak SAR : 0.498 W/kg
 Zoom Scan Peak SAR : 0.830 W/kg

This is previous page plot (zoom in)

