

ALSAS-10U VER 2.3.6 APREL Laboratories
SAR Test Report- PCS 1900 GPRS 2 SlotReport Date : 12-Feb-2009
Measurement Date : 12-Feb-2009

Product Data

Device Name : Acer
Type : Std Form Cell Phone
Model : acer & glofiish
Frequency : 1900.00 MHz
Max. Transmit Pwr : 1 W
Drift Time : 0 min(s)
Length : 117.6 mm
Width : 63.5 mm
Depth : 12.9 mm
Antenna Type : Internal

Phantom Data

Type : Uni-Phantom
Size (mm) : 280 x 280 x 200
Location : Center

Tissue Data

Type : BODY
Serial No. : 324-B
Frequency : 1900.00 MHz
Last Calib. Date : 12-Feb-2009
Temperature : 21.30 °C
Ambient Temp. : 22.10 °C
Humidity : 50.00 RH%
Epsilon : 52.33 F/m
Sigma : 1.53 S/m
Density : 1000.00 kg/cu. m

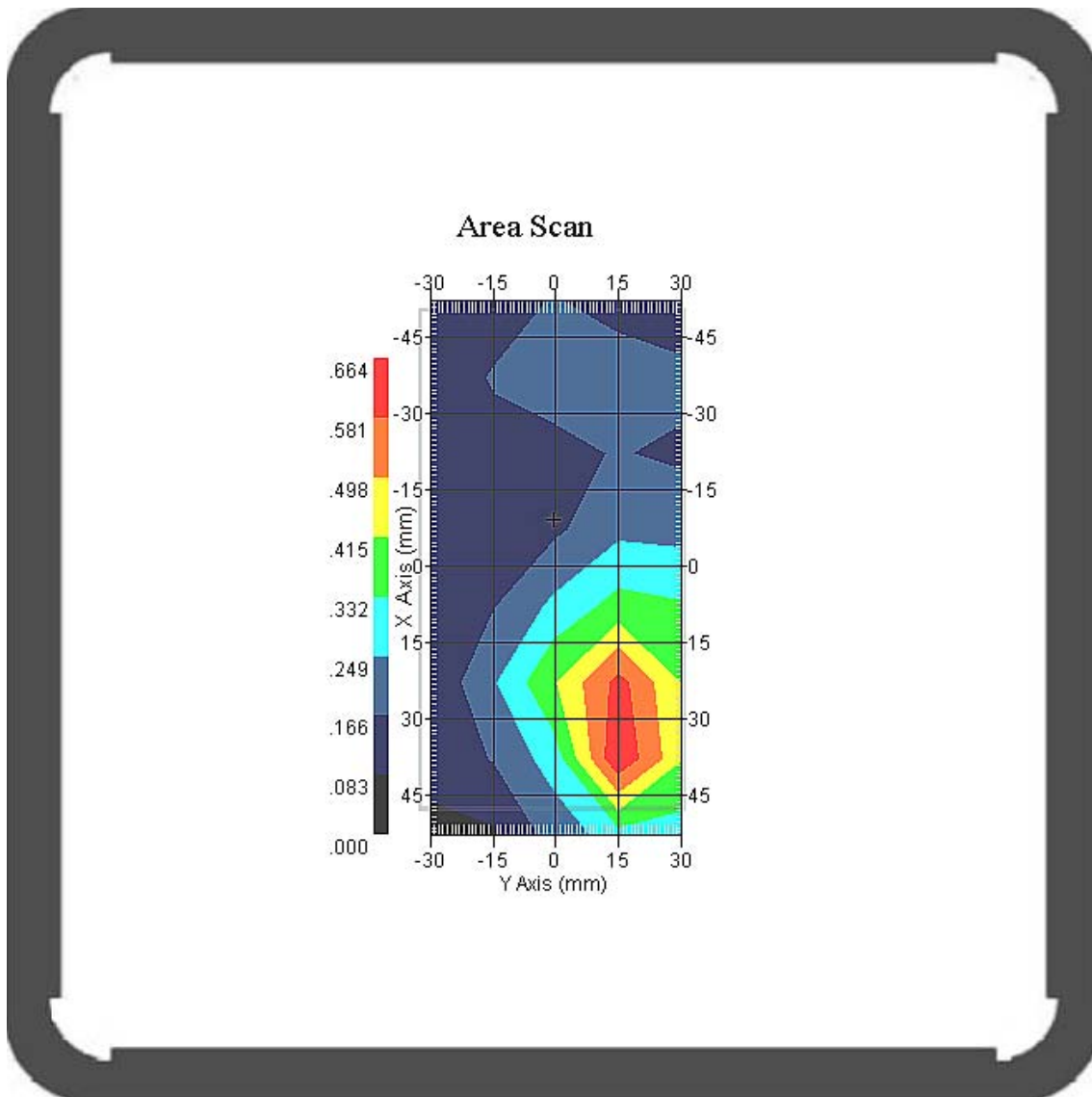
Probe Data

Name : Probe 265
Model : E020
Type : E-Field Triangle
Serial No. : 265
Last Calib. Date : 09-May-2008
Frequency : 1900.00 MHz
Duty Cycle Factor: 4
Conversion Factor: 5.1
Probe Sensitivity: 1.20 1.20 1.20 $\mu\text{V}/(\text{V}/\text{m})^2$
Compression Point: 95.00 mV
Offset : 1.56 mm

Measurement Data

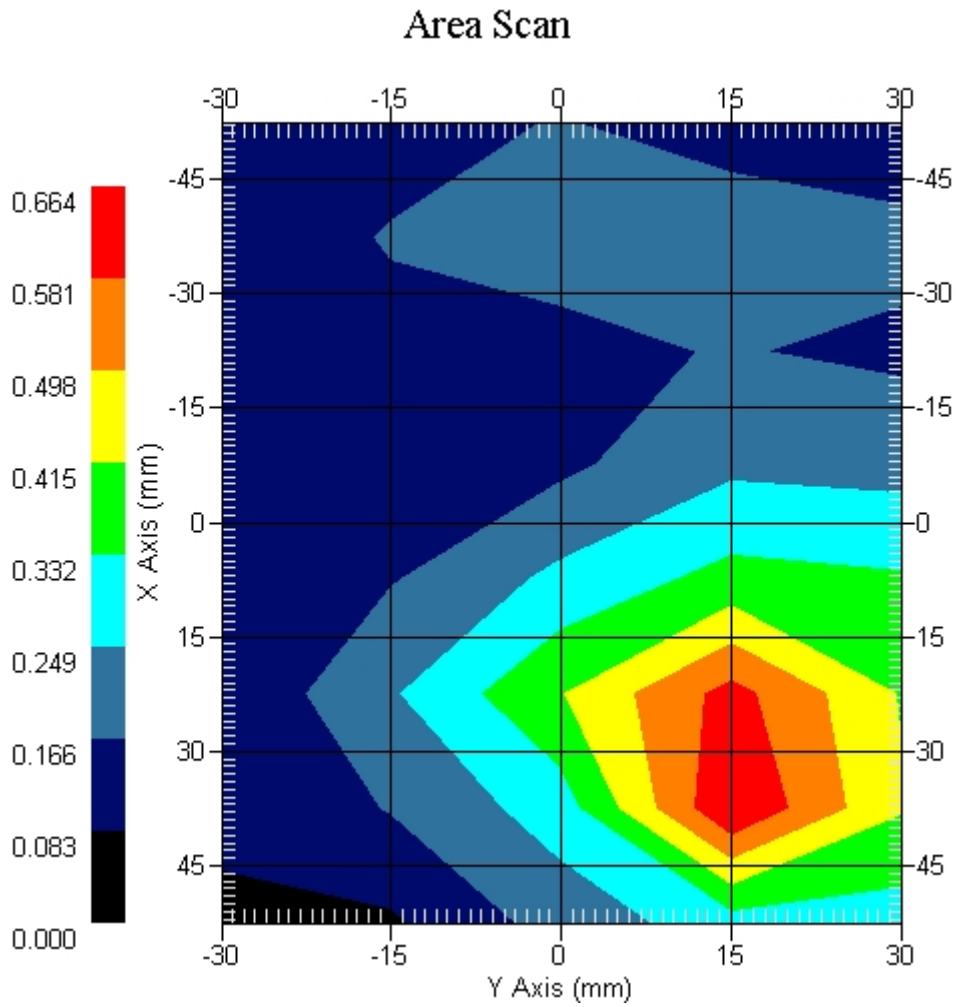
Crest Factor : 4
 Tissue Temp. : 21.30 °C
 Ambient Temp. : 22.10 °C
 Area Scan : 8x5x1 : Measurement x=15mm, y=15mm, z=4mm
 Zoom Scan : 5x5x8 : Measurement x=8mm, y=8mm, z=4mm
 Power Drift-Start : 0.128 W/kg
 Power Drift-Finish: 0.128 W/kg
 Power Drift (%) : -0.881

DUT Position : Touch
 Channel : 661



1 gram SAR value : 0.514 W/kg
 10 gram SAR value : 0.362 W/kg
 Area Scan Peak SAR : 0.660 W/kg
 Zoom Scan Peak SAR : 1.010 W/kg

This is previous page plot (zoom in)



ALSAS-10U VER 2.3.6 APREL Laboratories

SAR Test Report- PCS 1900 GPRS 3 Slot

Report Date : 12-Feb-2009
Measurement Date : 12-Feb-2009

Product Data

Device Name : Acer
Type : Std Form Cell Phone
Model : acer & glofiish
Frequency : 1900.00 MHz
Max. Transmit Pwr : 1 W
Drift Time : 0 min(s)
Length : 117.6 mm
Width : 63.5 mm
Depth : 12.9 mm
Antenna Type : Internal

Phantom Data

Type : Uni-Phantom
Size (mm) : 280 x 280 x 200
Location : Center

Tissue Data

Type : BODY
Serial No. : 324-B
Frequency : 1900.00 MHz
Last Calib. Date : 12-Feb-2009
Temperature : 21.30 °C
Ambient Temp. : 22.10 °C
Humidity : 50.00 RH%
Epsilon : 52.33 F/m
Sigma : 1.53 S/m
Density : 1000.00 kg/cu. m

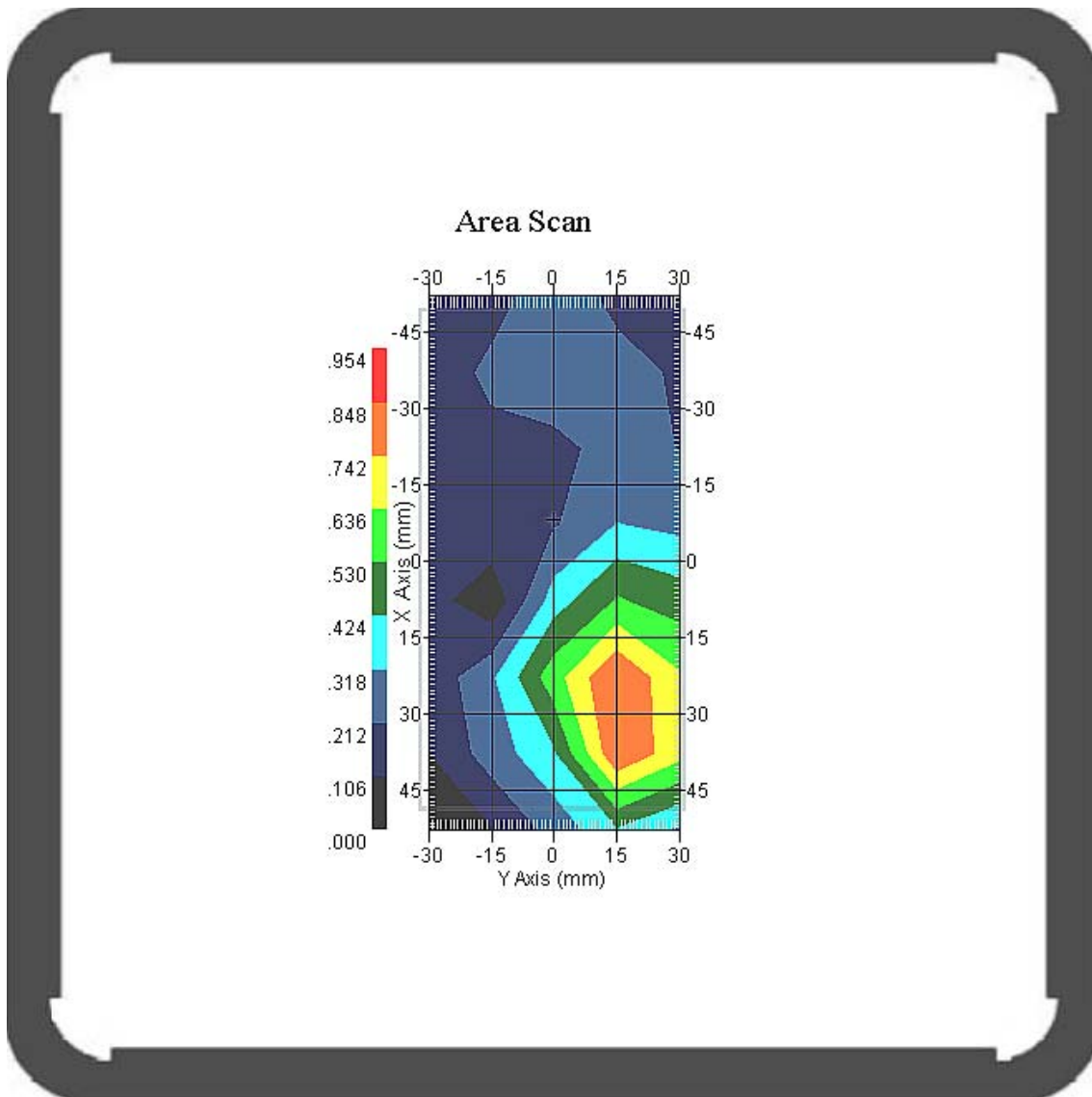
Probe Data

Name : Probe 265
Model : E020
Type : E-Field Triangle
Serial No. : 265
Last Calib. Date : 09-May-2008
Frequency : 1900.00 MHz
Duty Cycle Factor: 2.66
Conversion Factor: 5.1
Probe Sensitivity: 1.20 1.20 1.20 $\mu\text{V}/(\text{V}/\text{m})^2$
Compression Point: 95.00 mV
Offset : 1.56 mm

Measurement Data

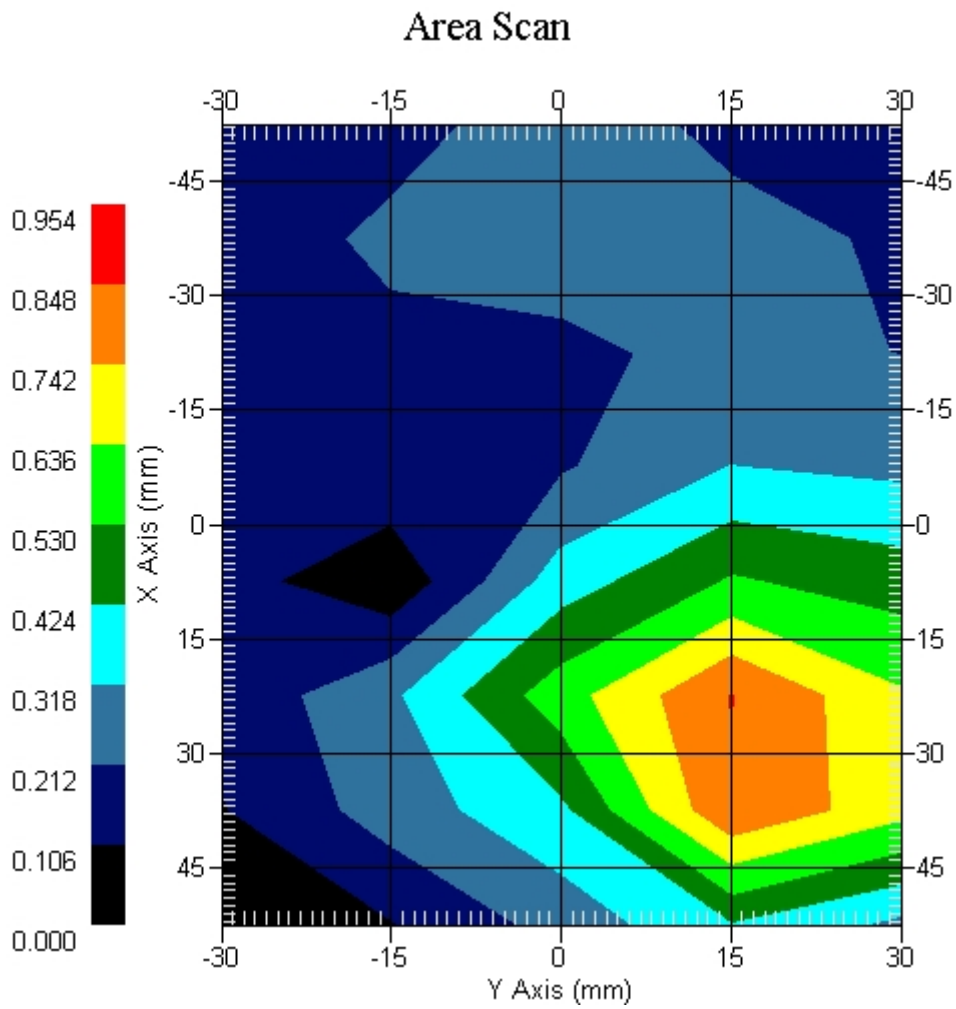
Crest Factor : 2.66
Tissue Temp. : 21.30 °C
Ambient Temp. : 22.10 °C
Area Scan : 8x5x1 : Measurement x=15mm, y=15mm, z=4mm
Zoom Scan : 5x5x8 : Measurement x=8mm, y=8mm, z=4mm
Power Drift-Start : 0.180 W/kg
Power Drift-Finish: 0.180 W/kg
Power Drift (%) : -0.075

DUT Position : Touch
Channel : 512



1 gram SAR value : 0.822 W/kg
10 gram SAR value : 0.621 W/kg
Area Scan Peak SAR : 0.950 W/kg
Zoom Scan Peak SAR : 1.470 W/kg

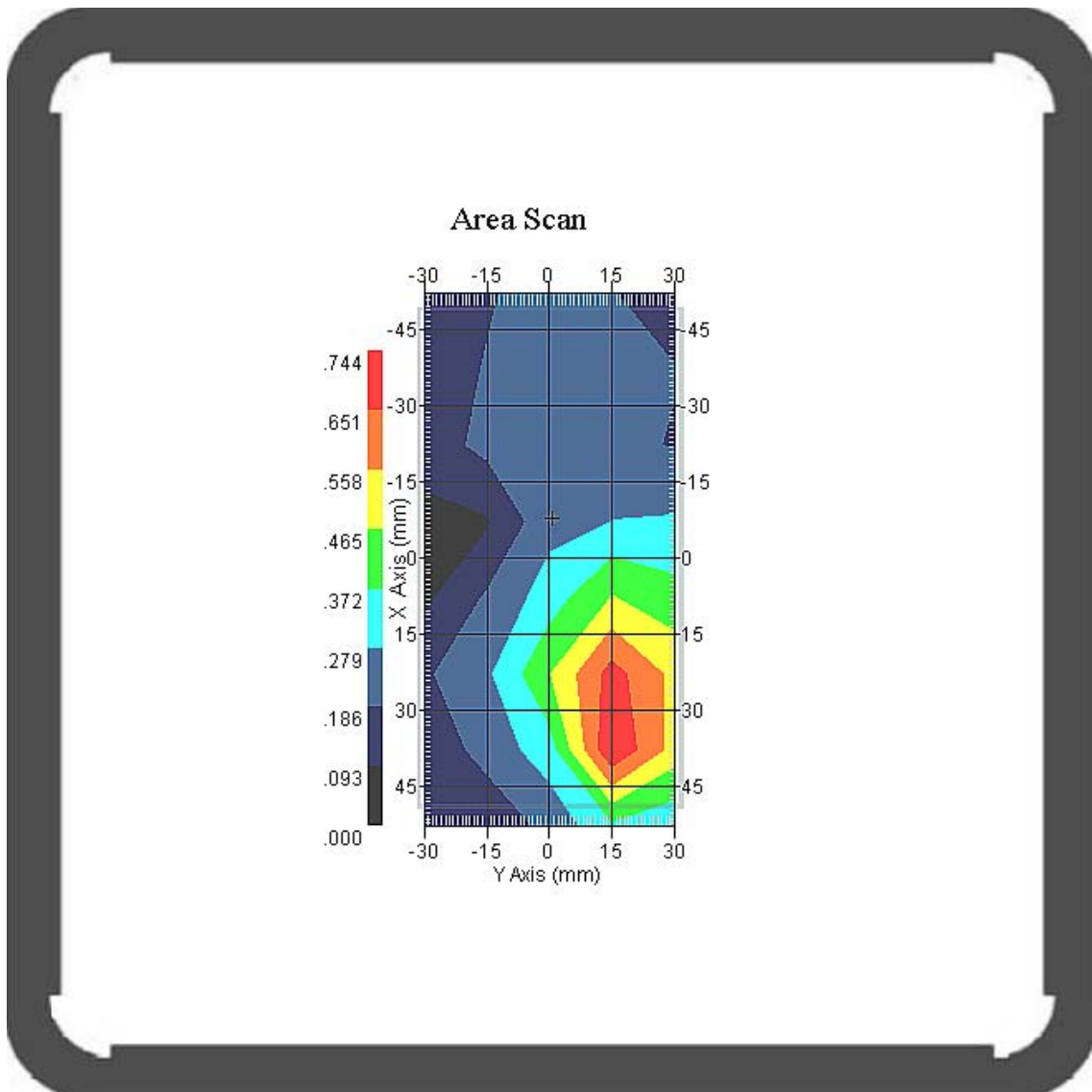
This is previous page plot (zoom in)



Measurement Data

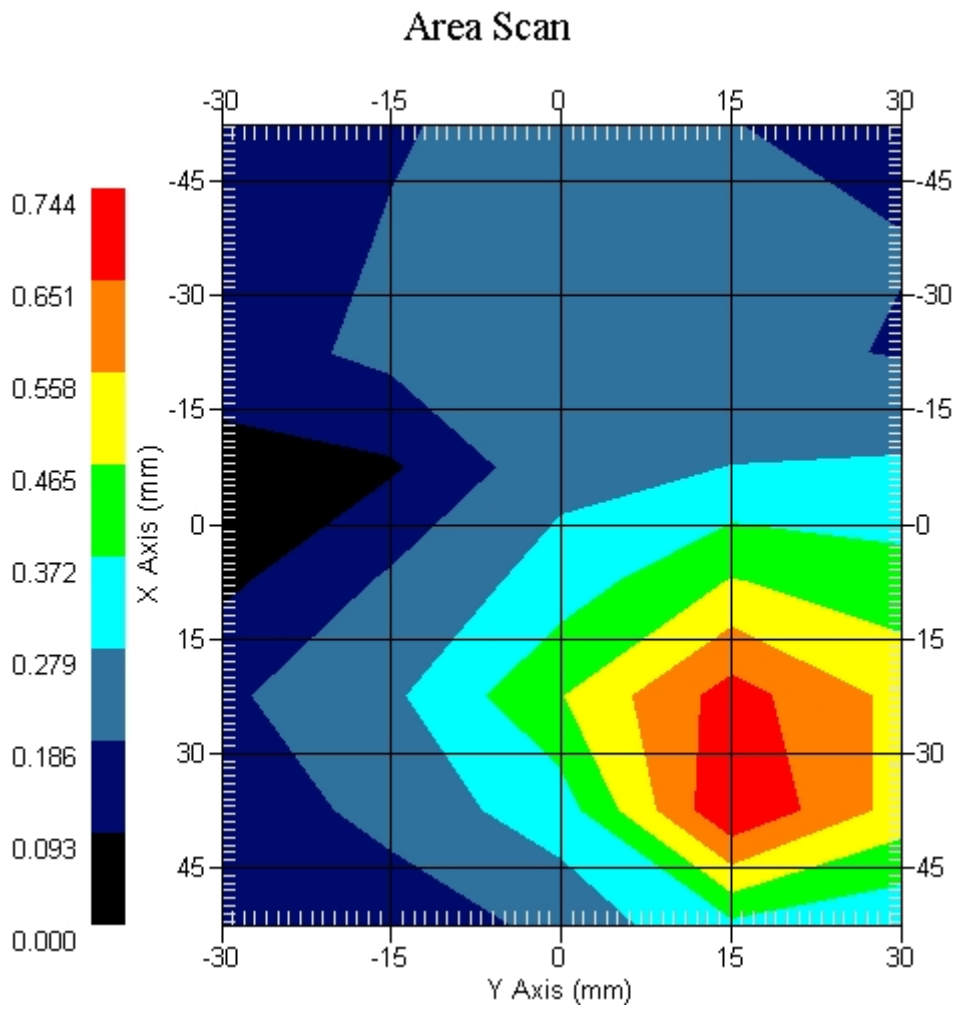
Crest Factor : 4
 Tissue Temp. : 21.30 °C
 Ambient Temp. : 22.10 °C
 Area Scan : 8x5x1 : Measurement x=15mm, y=15mm, z=4mm
 Zoom Scan : 5x5x8 : Measurement x=8mm, y=8mm, z=4mm
 Power Drift-Start : 0.197 W/kg
 Power Drift-Finish: 0.200 W/kg
 Power Drift (%) : 1.522

DUT Position : Touch
 Channel : 661



1 gram SAR value : 0.642 W/kg
 10 gram SAR value : 0.465 W/kg
 Area Scan Peak SAR : 0.740 W/kg
 Zoom Scan Peak SAR : 1.196 W/kg

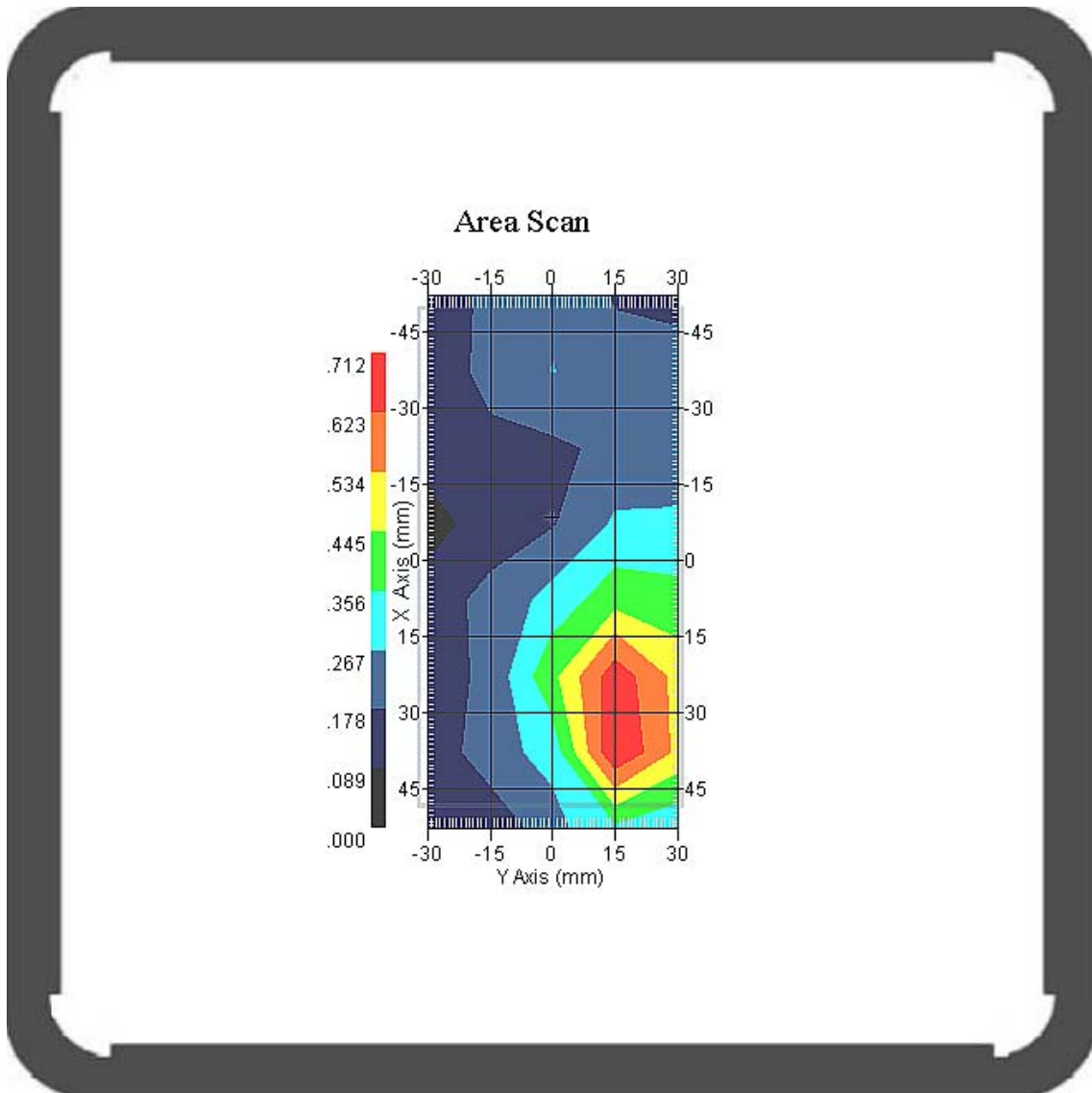
This is previous page plot (zoom in)



Measurement Data

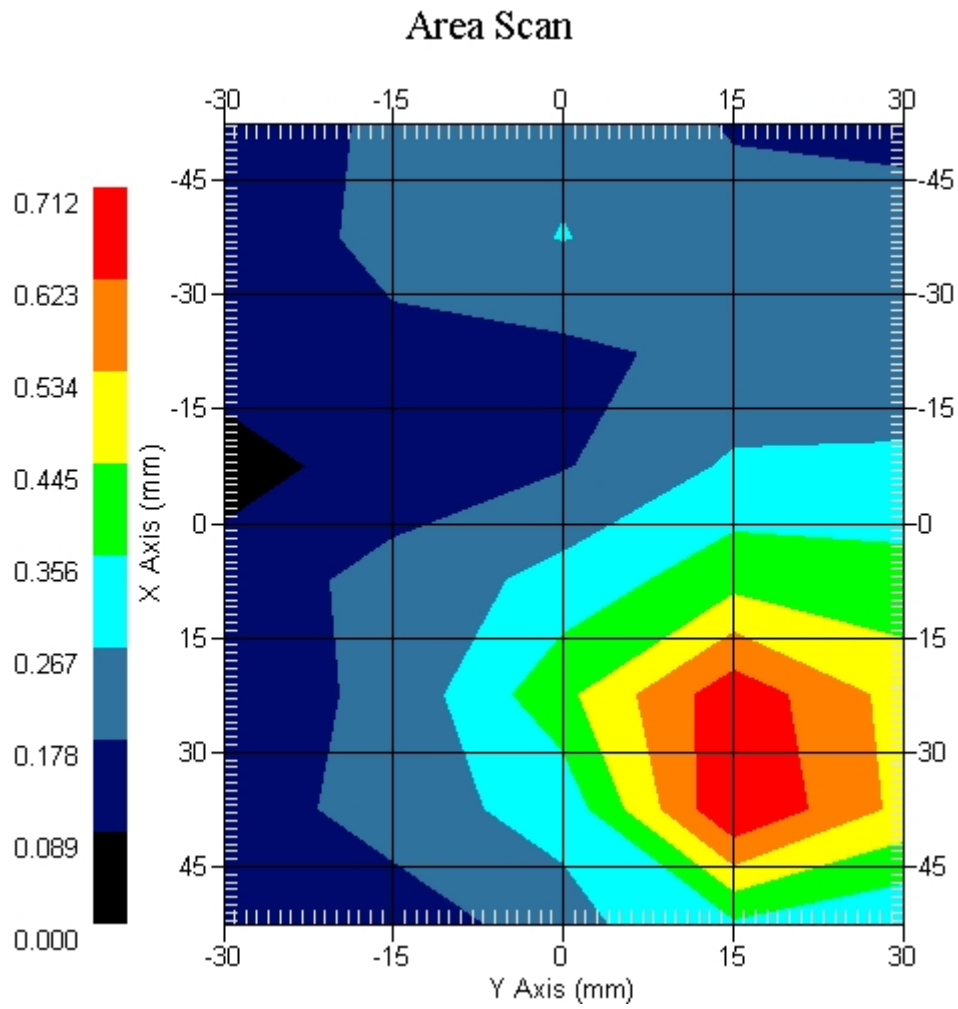
Crest Factor : 2.66
 Tissue Temp. : 21.30 °C
 Ambient Temp. : 22.10 °C
 Area Scan : 8x5x1 : Measurement x=15mm, y=15mm, z=4mm
 Zoom Scan : 5x5x8 : Measurement x=8mm, y=8mm, z=4mm
 Power Drift-Start : 0.190 W/kg
 Power Drift-Finish: 0.192 W/kg
 Power Drift (%) : 1.053

DUT Position : Touch
 Channel : 810



1 gram SAR value : 0.682 W/kg
 10 gram SAR value : 0.415 W/kg
 Area Scan Peak SAR : 0.710 W/kg
 Zoom Scan Peak SAR : 1.361 W/kg

This is previous page plot (zoom in)



ALSAS-10U VER 2.3.6 APREL Laboratories
SAR Test Report- PCS 1900 EGPRS 3 SlotReport Date : 12-Feb-2009
Measurement Date : 12-Feb-2009

Product Data

Device Name : Acer
Type : Std Form Cell Phone
Model : acer & glofiish
Frequency : 1900.00 MHz
Max. Transmit Pwr : 1 W
Drift Time : 0 min(s)
Length : 117.6 mm
Width : 63.5 mm
Depth : 12.9 mm
Antenna Type : Internal

Phantom Data

Type : Uni-Phantom
Size (mm) : 280 x 280 x 200
Location : Center

Tissue Data

Type : BODY
Serial No. : 324-B
Frequency : 1900.00 MHz
Last Calib. Date : 12-Feb-2009
Temperature : 21.30 °C
Ambient Temp. : 22.10 °C
Humidity : 50.00 RH%
Epsilon : 52.33 F/m
Sigma : 1.53 S/m
Density : 1000.00 kg/cu. m

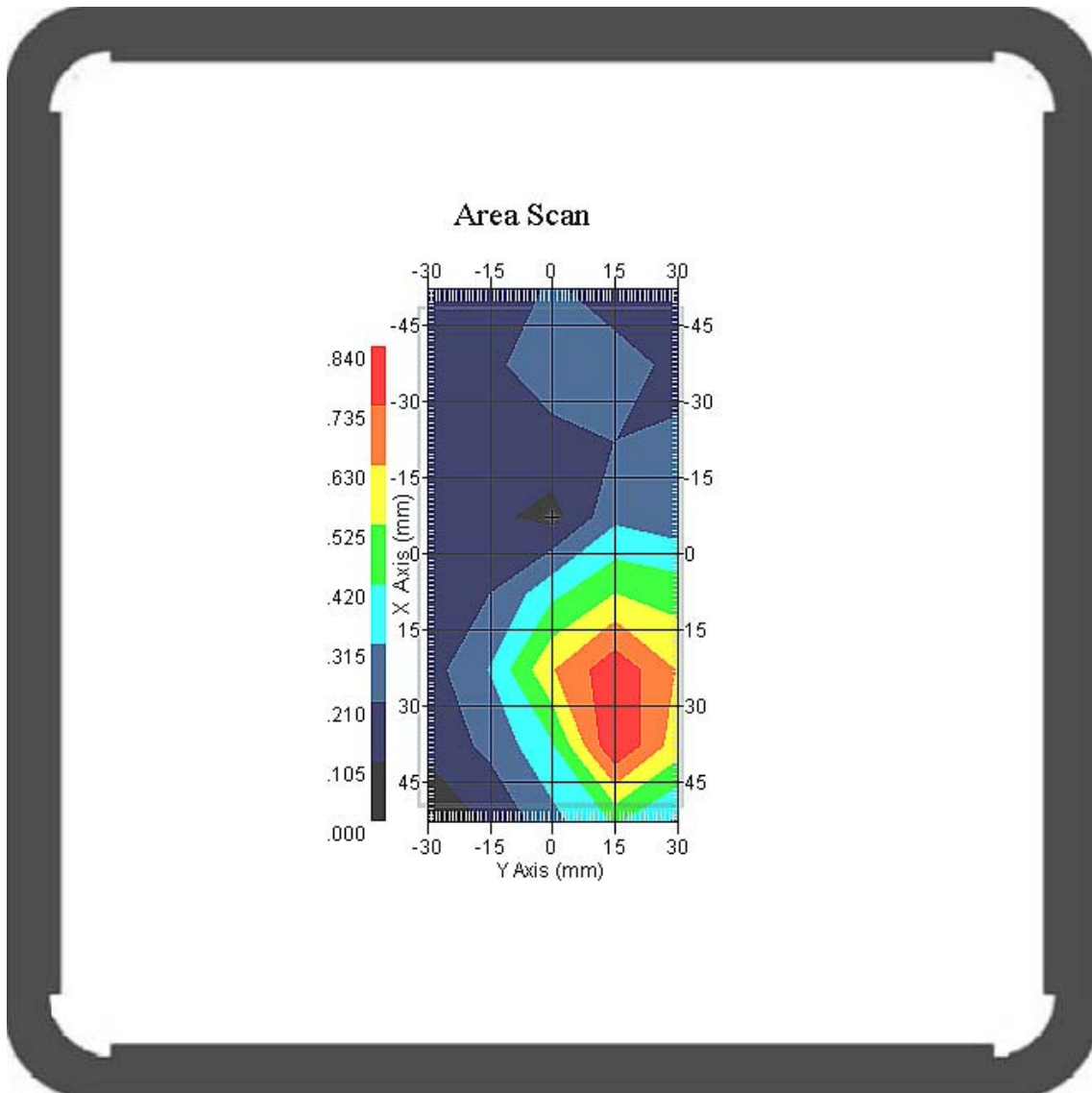
Probe Data

Name : Probe 265
Model : E020
Type : E-Field Triangle
Serial No. : 265
Last Calib. Date : 09-May-2008
Frequency : 1900.00 MHz
Duty Cycle Factor: 2.66
Conversion Factor: 5.1
Probe Sensitivity: 1.20 1.20 1.20 $\mu\text{V}/(\text{V}/\text{m})^2$
Compression Point: 95.00 mV
Offset : 1.56 mm

Measurement Data

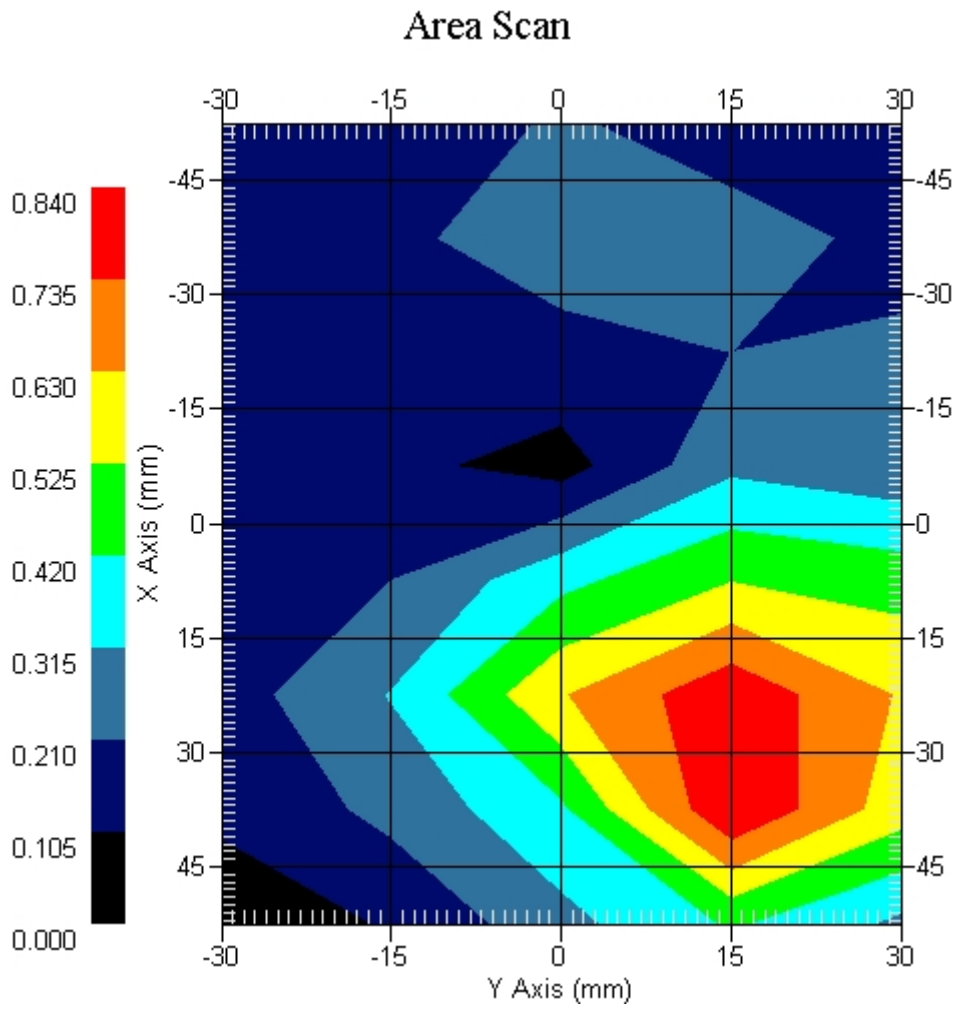
Crest Factor : 2.66
 Tissue Temp. : 21.30 °C
 Ambient Temp. : 22.10 °C
 Area Scan : 8x5x1 : Measurement x=15mm, y=15mm, z=4mm
 Zoom Scan : 5x5x8 : Measurement x=8mm, y=8mm, z=4mm
 Power Drift-Start : 0.176 W/kg
 Power Drift-Finish: 0.176 W/kg
 Power Drift (%) : -0.961

DUT Position : Touch
 Channel : 512

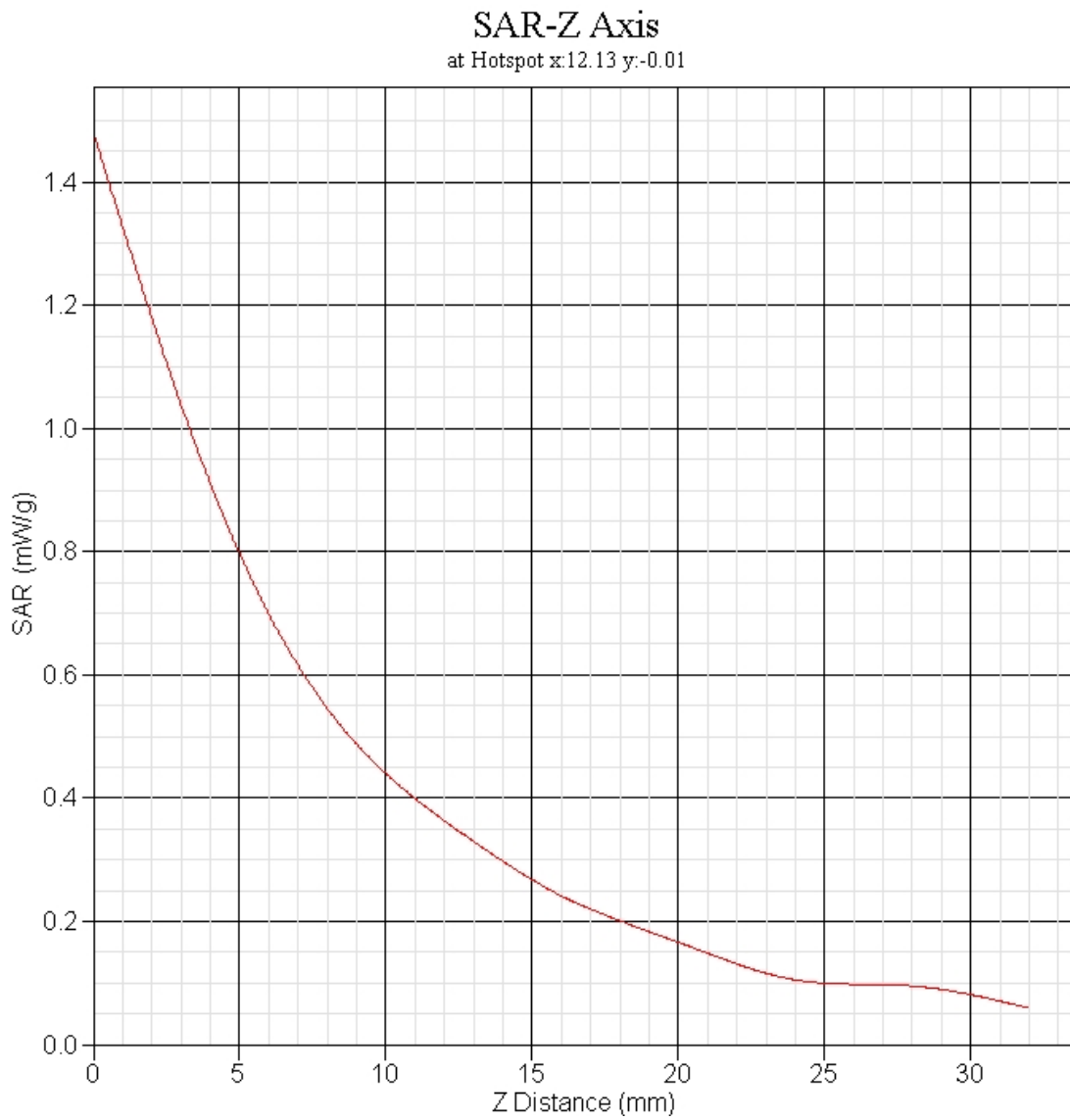


1 gram SAR value : 0.732 W/kg
 10 gram SAR value : 0.547 W/kg
 Area Scan Peak SAR : 0.840 W/kg
 Zoom Scan Peak SAR : 1.411 W/kg

This is previous page plot (zoom in)



PCS 1900 GPRS 2 Slot EUT Body-worn, Z-Axis plot
Channel: 512



ALSAS-10U VER 2.3.6 APREL Laboratories

SAR Test Report-WCDMA Band V

Report Date : 11-Feb-2009
Measurement Date : 11-Feb-2009

Product Data

Device Name : Smart Handheld
Type : Std Form Cell Phone
Model : acer & glofiish
Frequency : 850.00 MHz
Max. Transmit Pwr : 2 W
Drift Time : 0 min(s)
Length : 117.6 mm
Width : 63.5 mm
Depth : 12.9 mm
Antenna Type : Internal

Phantom Data

Type : SAM-Left
Size (mm) : 280 x 280 x 280
Location : Left

Tissue Data

Type : HEAD
Serial No. : 322-H
Frequency : 835.00 MHz
Last Calib. Date : 11-Feb-2009
Temperature : 21.20 °C
Ambient Temp. : 21.80 °C
Humidity : 52.00 RH%
Epsilon : 43.34 F/m
Sigma : 0.94 S/m
Density : 1000.00 kg/cu. m

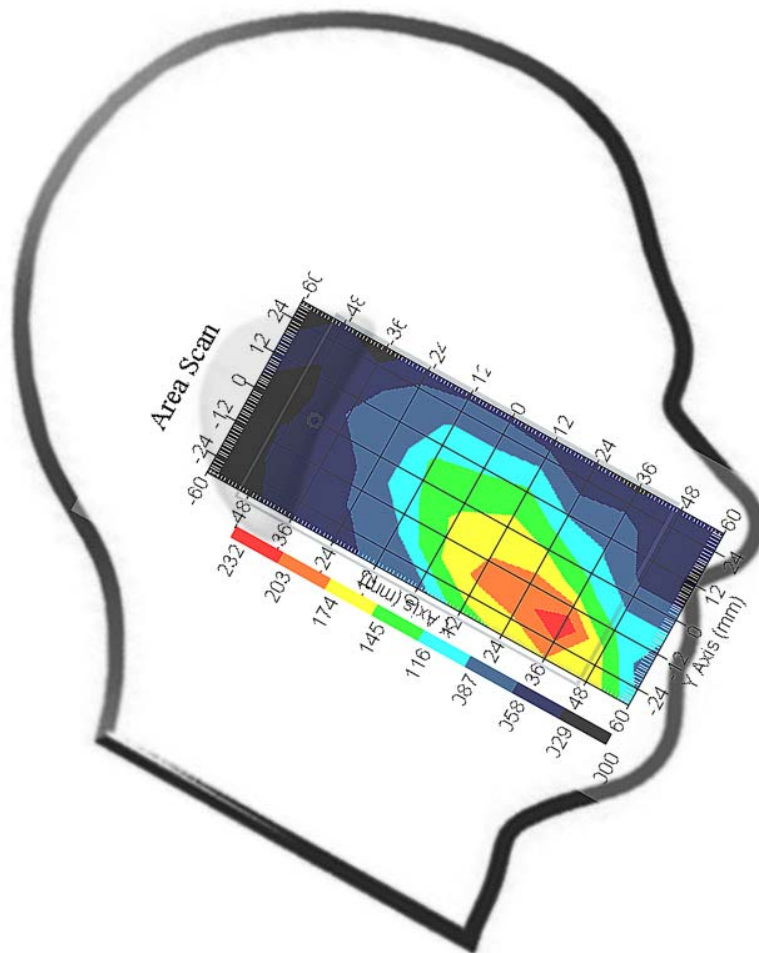
Probe Data

Name : Probe 265
Model : E020
Type : E-Field Triangle
Serial No. : 265
Last Calib. Date : 09-May-2008
Frequency : 835.00 MHz
Duty Cycle Factor: 1
Conversion Factor: 6.2
Probe Sensitivity: 1.20 1.20 1.20 $\mu\text{V}/(\text{V}/\text{m})^2$
Compression Point: 95.00 mV
Offset : 1.56 mm

Measurement Data

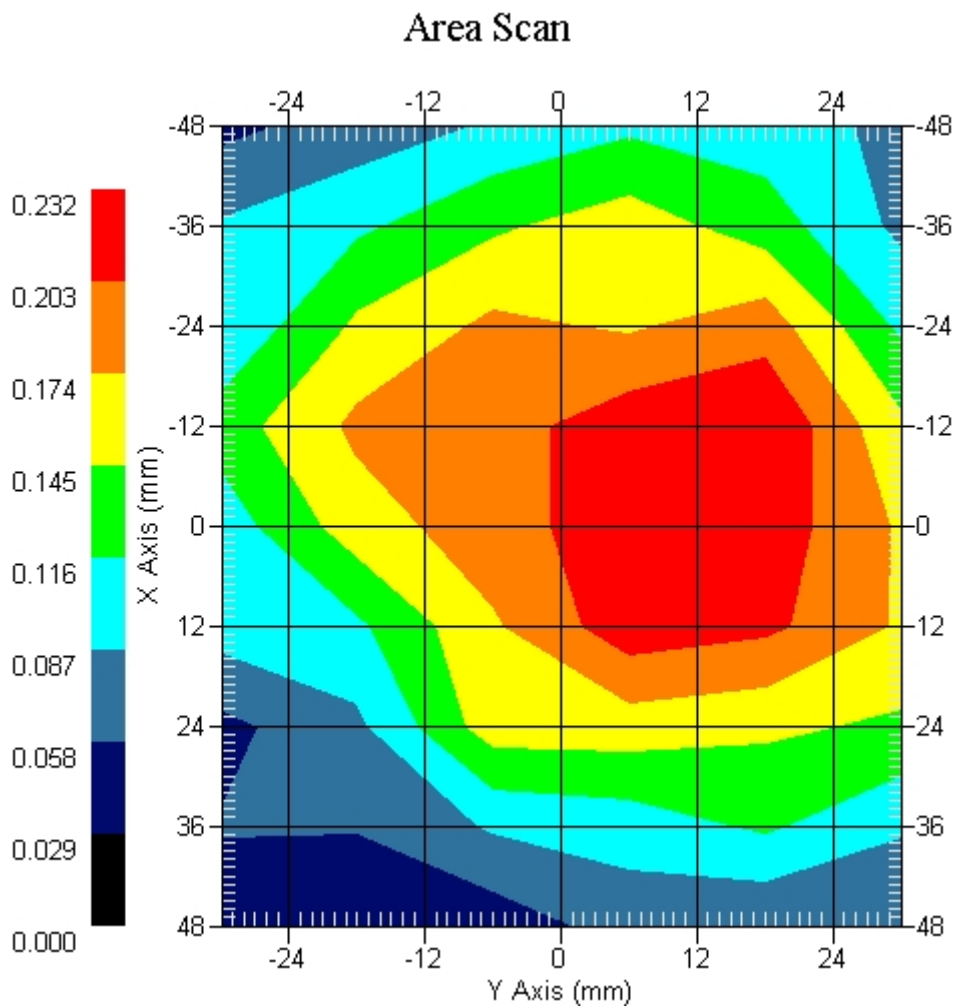
Crest Factor : 1
Tissue Temp. : 21.20 °C
Ambient Temp. : 21.80 °C
Area Scan : 11x6x1 : Measurement x=12mm, y=12mm, z=4mm
Zoom Scan : 5x5x8 : Measurement x=8mm, y=8mm, z=4mm
Power Drift-Start : 0.051 W/kg
Power Drift-Finish: 0.049 W/kg
Power Drift (%) : -3.921

DUT Position : Touch
Channel : 4132



1 gram SAR value : 0.217 W/kg
10 gram SAR value : 0.168 W/kg
Area Scan Peak SAR : 0.230 W/kg
Zoom Scan Peak SAR : 0.310 W/kg

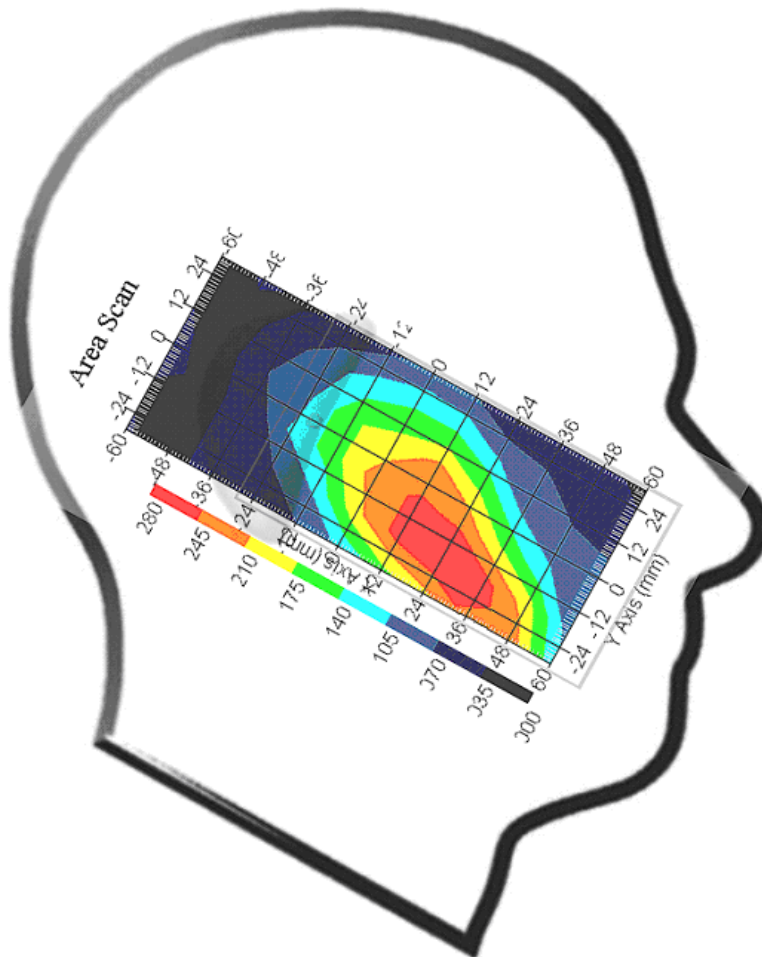
This is previous page plot (zoom in)



Measurement Data

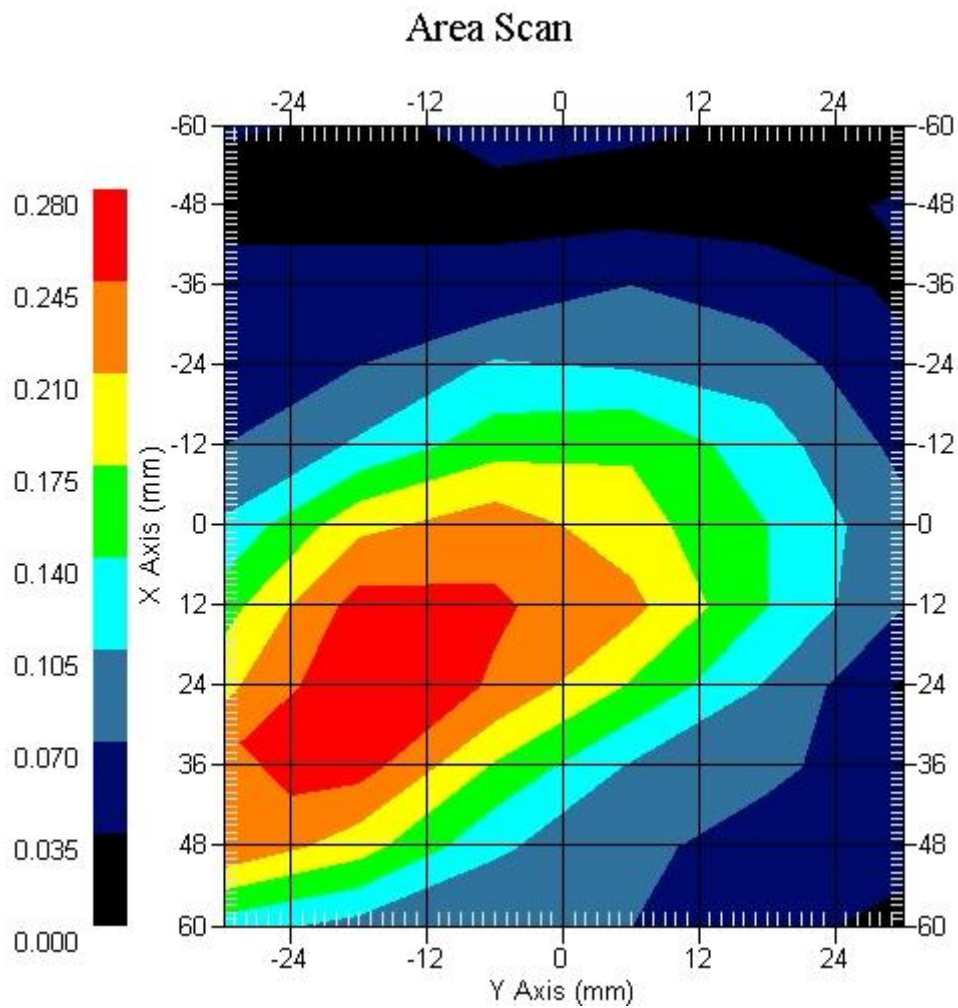
Crest Factor : 1
Tissue Temp. : 21.20 °C
Ambient Temp. : 21.80 °C
Area Scan : 11x6x1 : Measurement x=12mm, y=12mm, z=4mm
Zoom Scan : 5x5x8 : Measurement x=8mm, y=8mm, z=4mm
Power Drift-Start : 0.041 W/kg
Power Drift-Finish: 0.041 W/kg
Power Drift (%) : 0.106

DUT Position : Touch
Channel : 4183



1 gram SAR value : 0.265 W/kg
10 gram SAR value : 0.203 W/kg
Area Scan Peak SAR : 0.280 W/kg
Zoom Scan Peak SAR : 0.360 W/kg

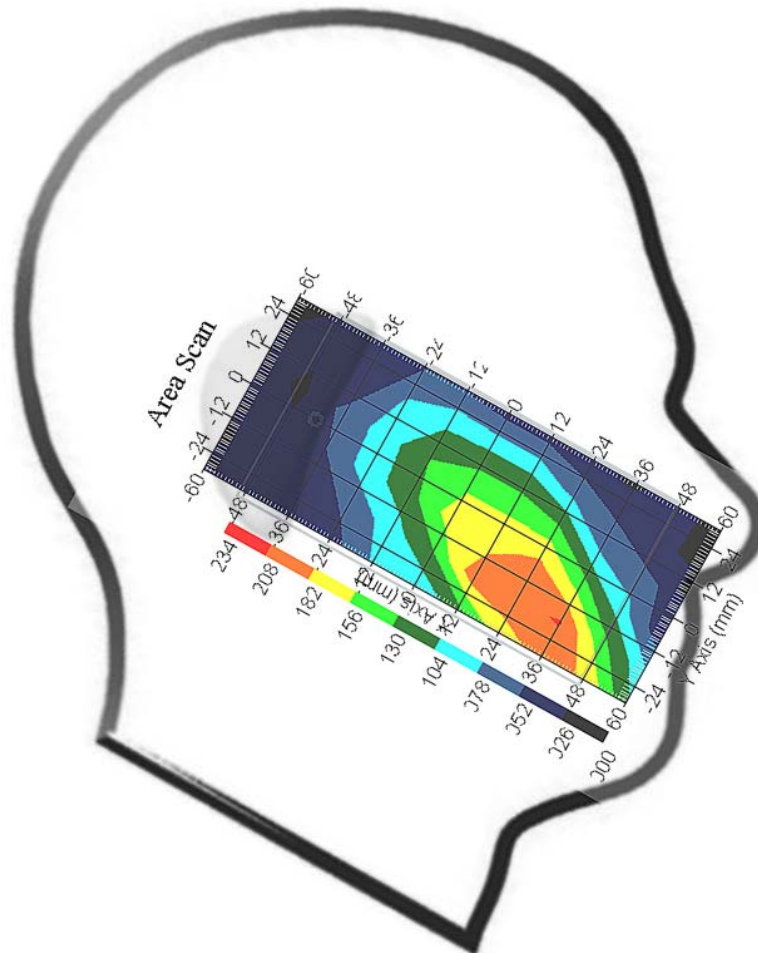
This is previous page plot (zoom in)



Measurement Data

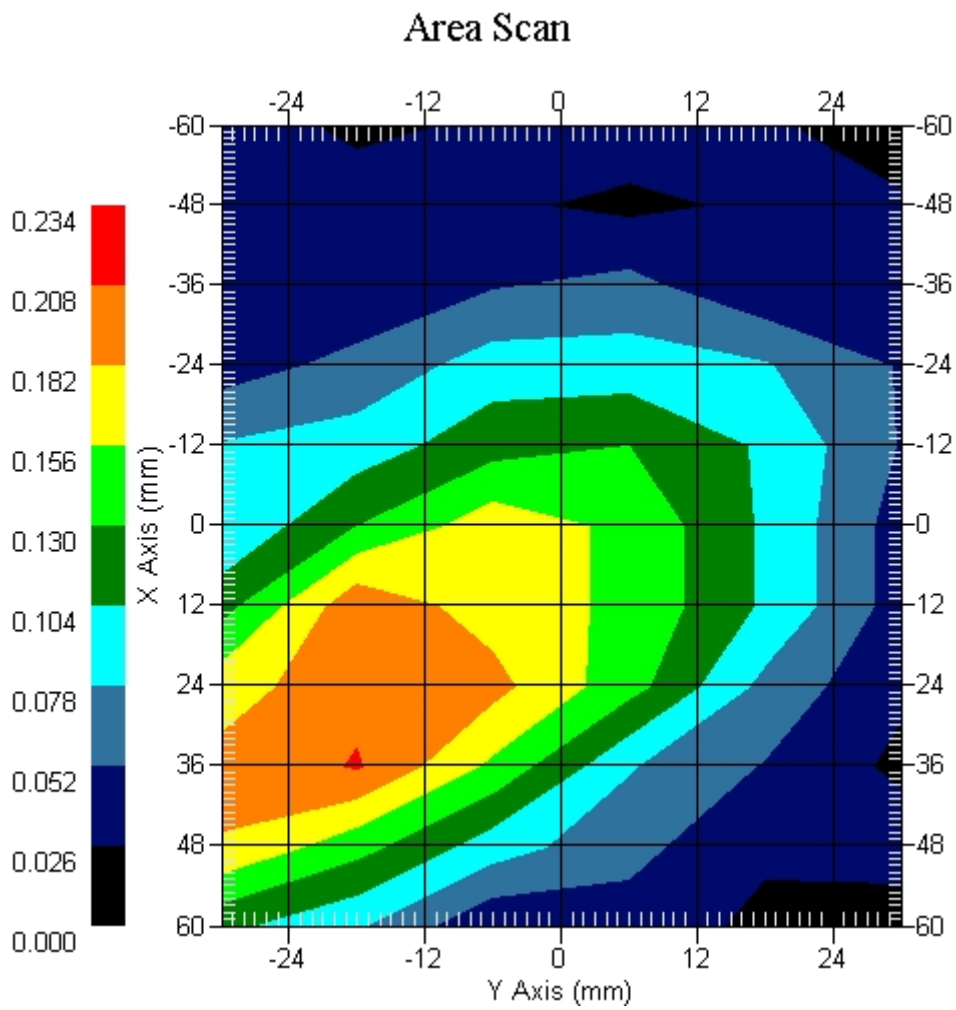
Crest Factor : 1
Tissue Temp. : 21.20 °C
Ambient Temp. : 21.80 °C
Area Scan : 11x6x1 : Measurement x=12mm, y=12mm, z=4mm
Zoom Scan : 5x5x8 : Measurement x=8mm, y=8mm, z=4mm
Power Drift-Start : 0.048 W/kg
Power Drift-Finish: 0.048 W/kg
Power Drift (%) : 0.398

DUT Position : Touch
Channel : 4233



1 gram SAR value : 0.201 W/kg
10 gram SAR value : 0.142 W/kg
Area Scan Peak SAR : 0.210 W/kg
Zoom Scan Peak SAR : 0.290 W/kg

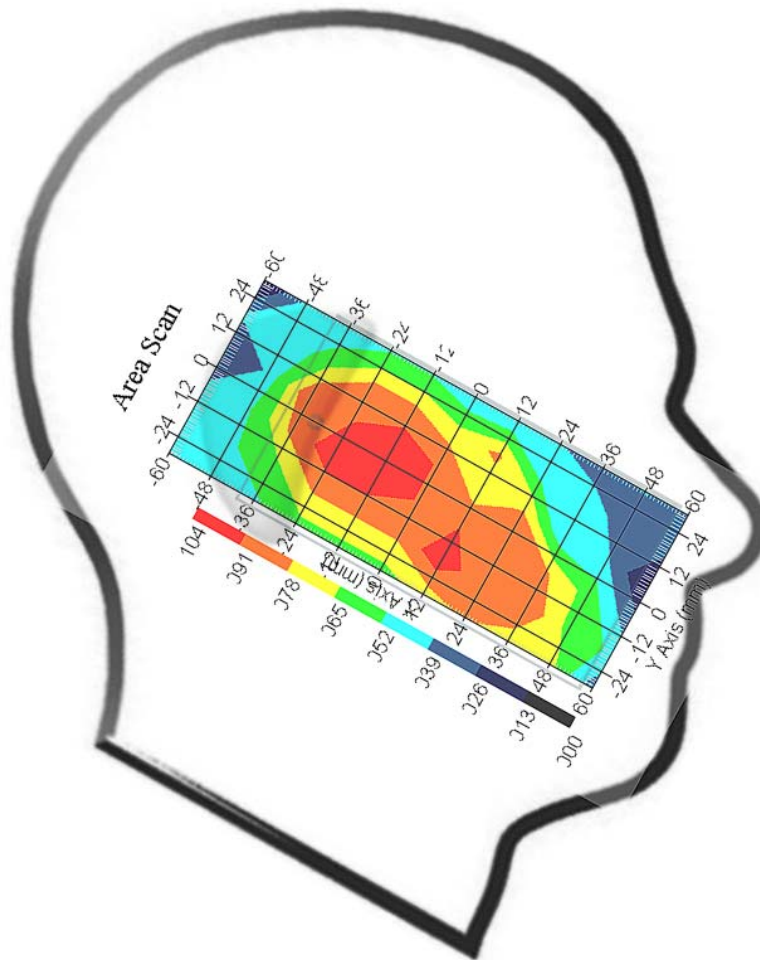
This is previous page plot (zoom in)



Measurement Data

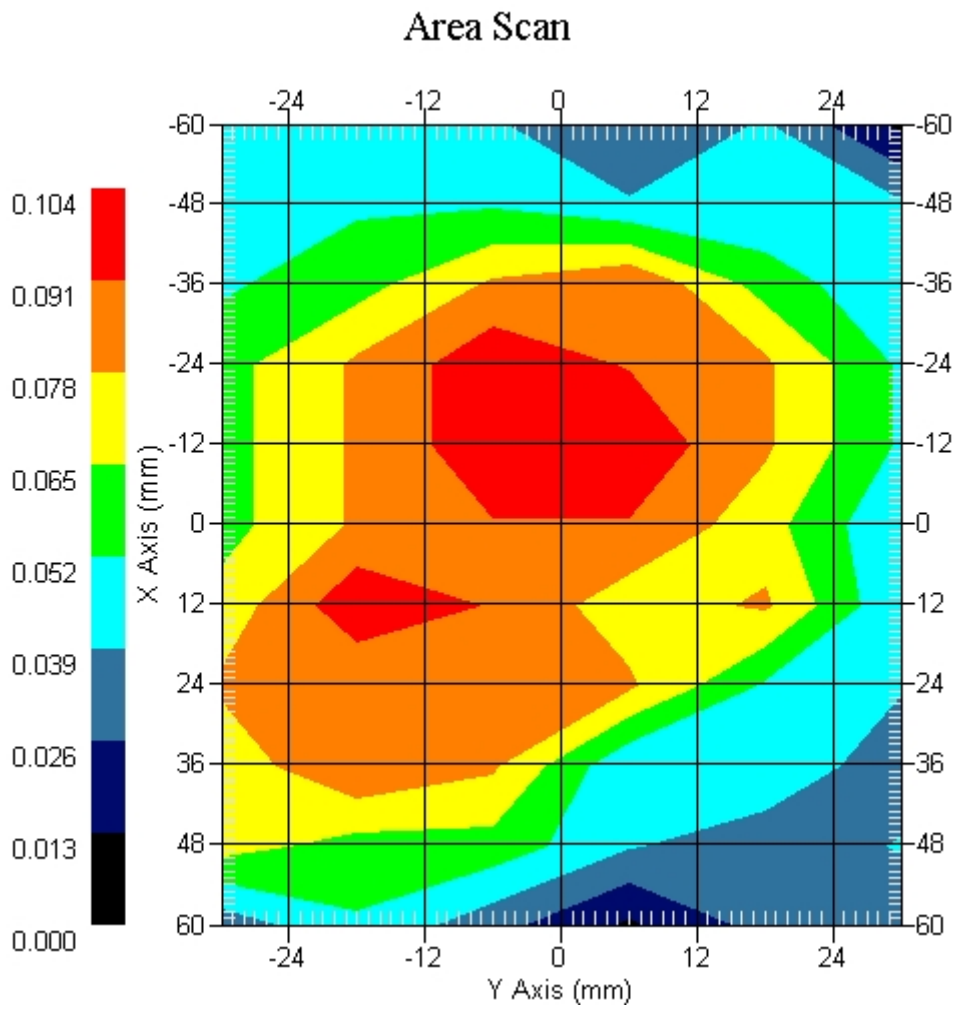
Crest Factor : 1
 Tissue Temp. : 21.20 °C
 Ambient Temp. : 21.80 °C
 Area Scan : 11x6x1 : Measurement x=12mm, y=12mm, z=4mm
 Zoom Scan : 5x5x8 : Measurement x=8mm, y=8mm, z=4mm
 Power Drift-Start : 0.058 W/kg
 Power Drift-Finish: 0.059 W/kg
 Power Drift (%) : 1.724

DUT Position : 15° Tilt
 Channel : 4132



1 gram SAR value : 0.075 W/kg
 10 gram SAR value : 0.058 W/kg
 Area Scan Peak SAR : 0.100 W/kg
 Zoom Scan Peak SAR : 0.119 W/kg

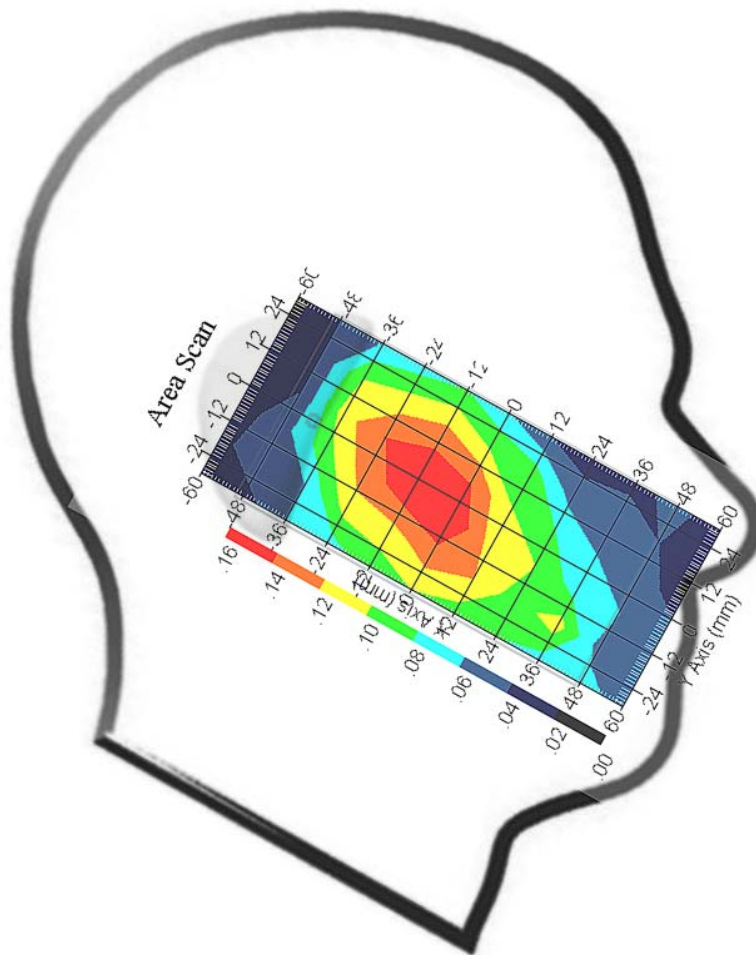
This is previous page plot (zoom in)



Measurement Data

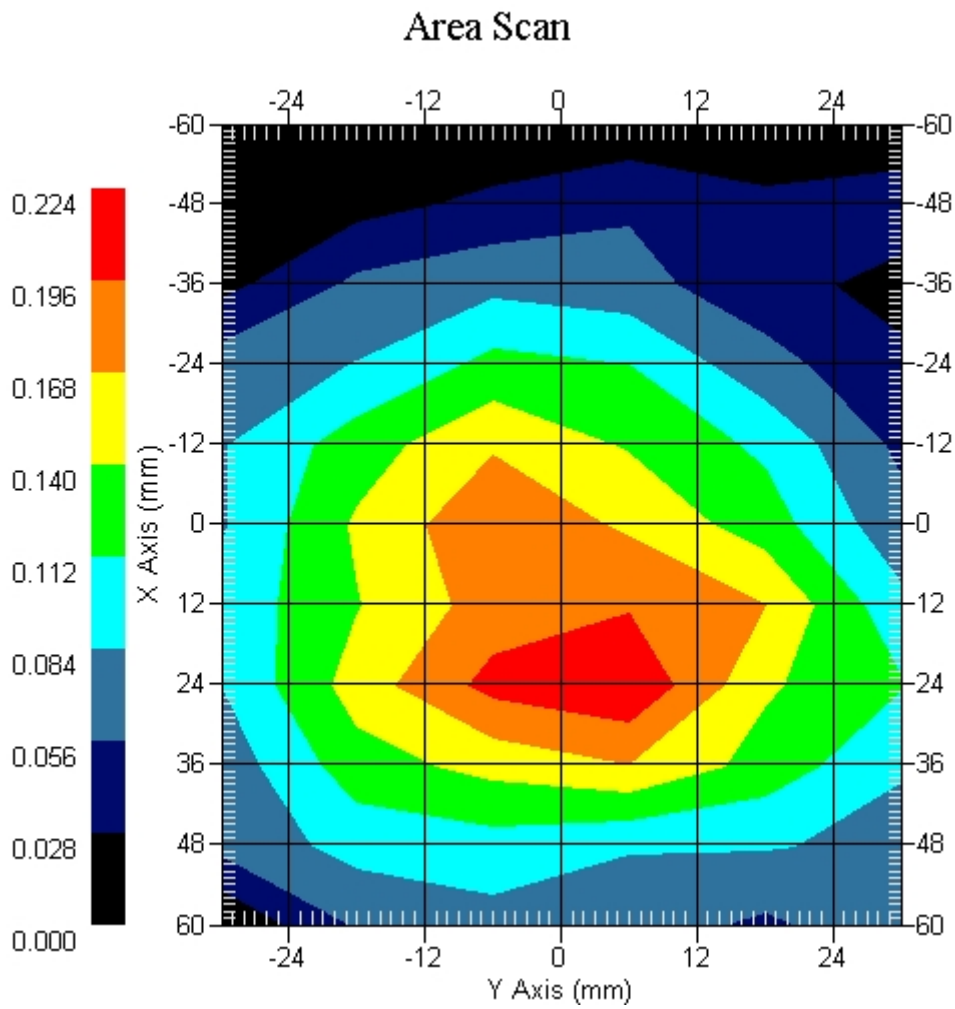
Crest Factor : 1
Tissue Temp. : 21.20 °C
Ambient Temp. : 21.80 °C
Area Scan : 11x6x1 : Measurement x=12mm, y=12mm, z=4mm
Zoom Scan : 5x5x8 : Measurement x=8mm, y=8mm, z=4mm
Power Drift-Start : 0.084 W/kg
Power Drift-Finish: 0.081 W/kg
Power Drift (%) : -3.571

DUT Position : 15° Tilt
Channel : 4183



1 gram SAR value : 0.137 W/kg
10 gram SAR value : 0.110 W/kg
Area Scan Peak SAR : 0.160 W/kg
Zoom Scan Peak SAR : 0.180 W/kg

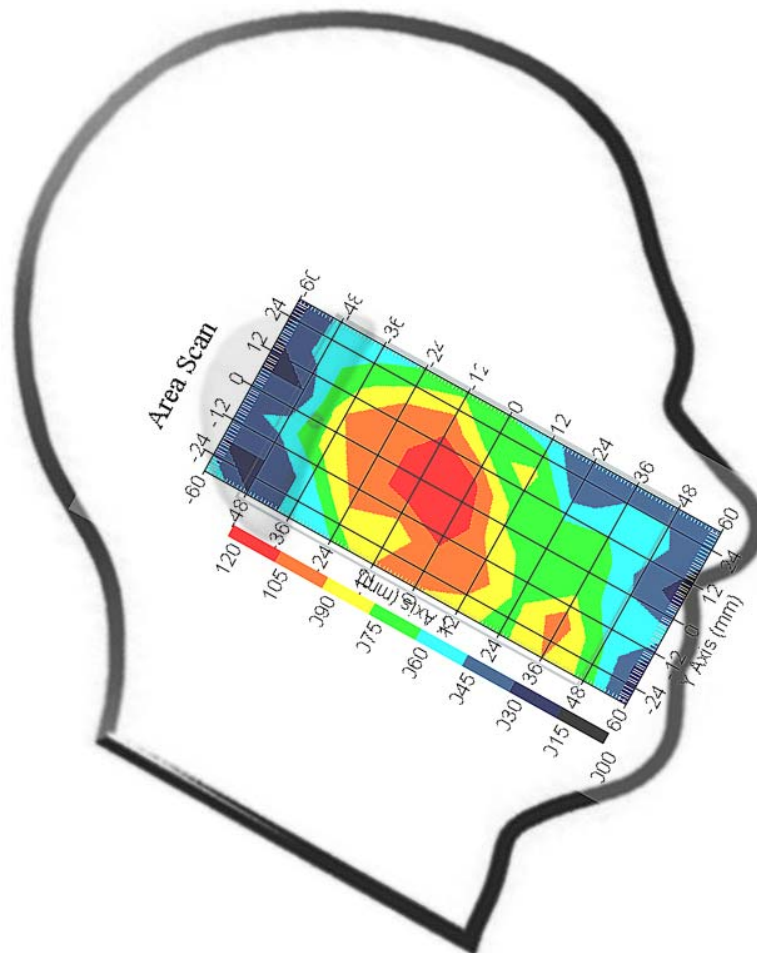
This is previous page plot (zoom in)



Measurement Data

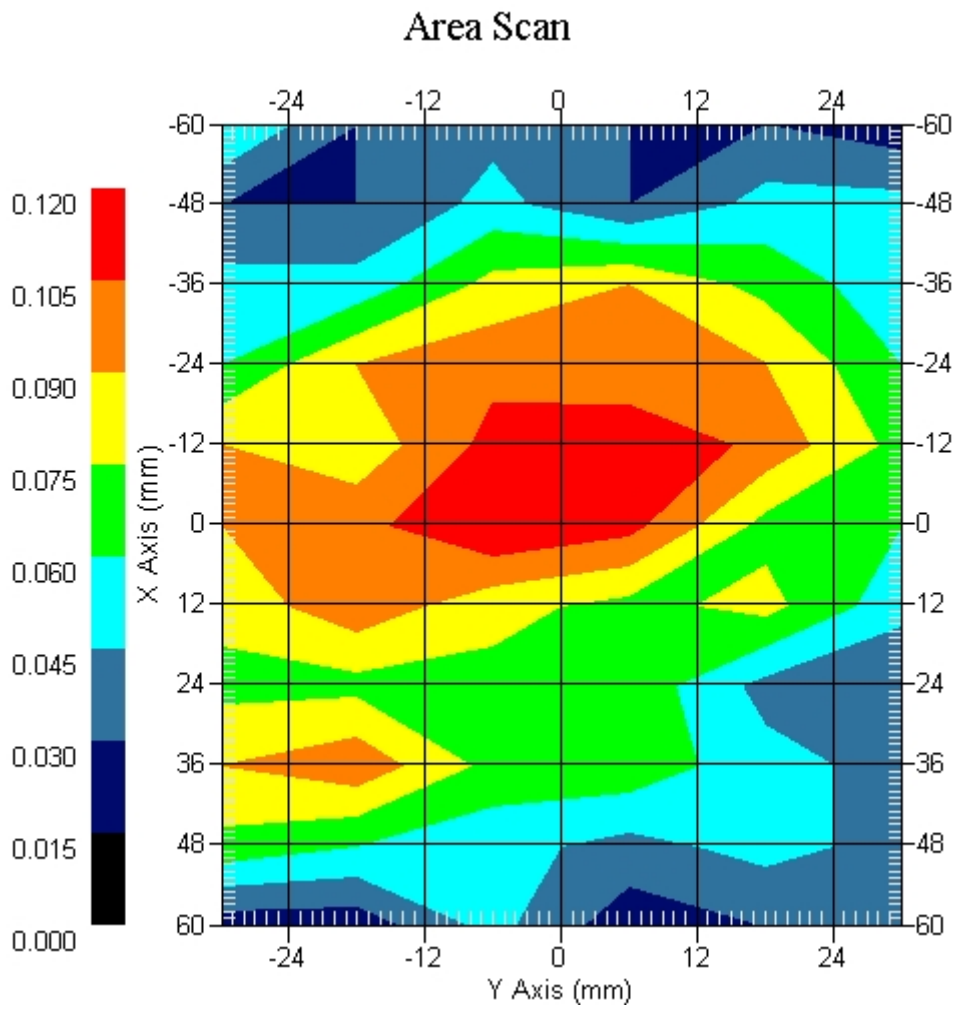
Crest Factor : 1
Tissue Temp. : 21.20 °C
Ambient Temp. : 21.80 °C
Area Scan : 11x6x1 : Measurement x=12mm, y=12mm, z=4mm
Zoom Scan : 5x5x8 : Measurement x=8mm, y=8mm, z=4mm
Power Drift-Start : 0.062 W/kg
Power Drift-Finish: 0.061 W/kg
Power Drift (%) : -2.642

DUT Position : 15° Tilt
Channel : 4233



1 gram SAR value : 0.098 W/kg
10 gram SAR value : 0.071 W/kg
Area Scan Peak SAR : 0.120 W/kg
Zoom Scan Peak SAR : 0.140 W/kg

This is previous page plot (zoom in)



ALSAS-10U VER 2.3.6 APREL Laboratories

SAR Test Report-WCDMA Band V

Report Date : 11-Feb-2009
Measurement Date : 11-Feb-2009

Product Data

Device Name : Smart Handheld
Type : Std Form Cell Phone
Model : acer & glofiish
Frequency : 850.00 MHz
Max. Transmit Pwr : 2 W
Drift Time : 0 min(s)
Length : 117.6 mm
Width : 63.5 mm
Depth : 12.9 mm
Antenna Type : Internal

Phantom Data

Type : SAM-Right
Size (mm) : 280 x 280 x 280
Location : Right

Tissue Data

Type : HEAD
Serial No. : 322-H
Frequency : 835.00 MHz
Last Calib. Date : 11-Feb-2009
Temperature : 21.20 °C
Ambient Temp. : 21.80 °C
Humidity : 52.00 RH%
Epsilon : 43.34 F/m
Sigma : 0.94 S/m
Density : 1000.00 kg/cu. m

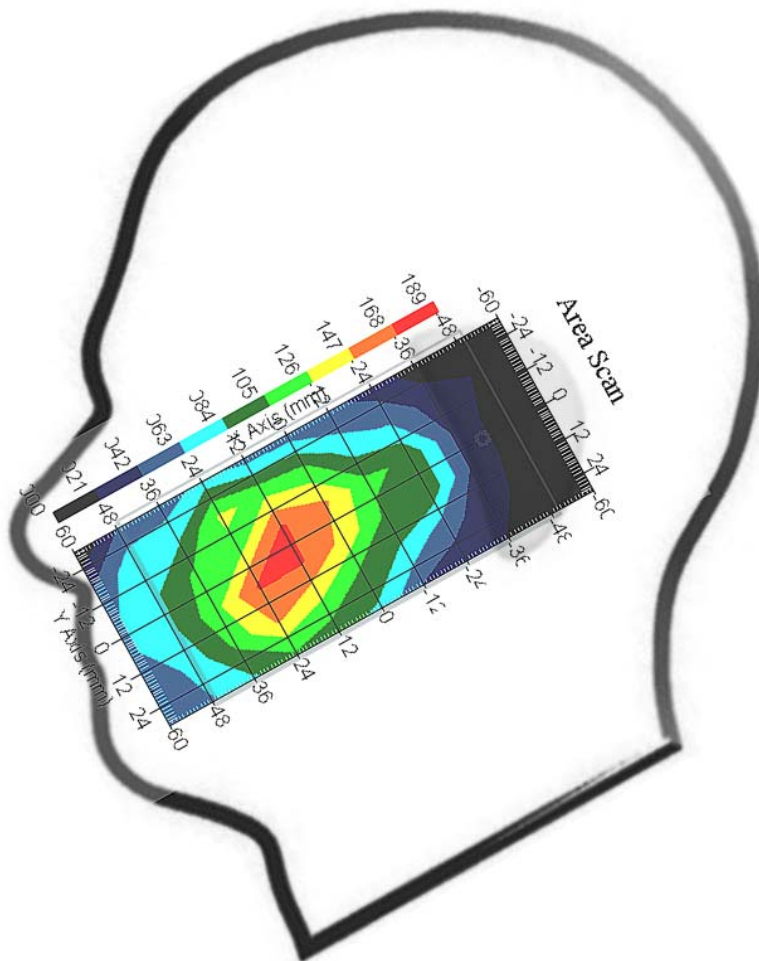
Probe Data

Name : Probe 265
Model : E020
Type : E-Field Triangle
Serial No. : 265
Last Calib. Date : 09-May-2008
Frequency : 835.00 MHz
Duty Cycle Factor: 1
Conversion Factor: 6.2
Probe Sensitivity: 1.20 1.20 1.20 $\mu\text{V}/(\text{V}/\text{m})^2$
Compression Point: 95.00 mV
Offset : 1.56 mm

Measurement Data

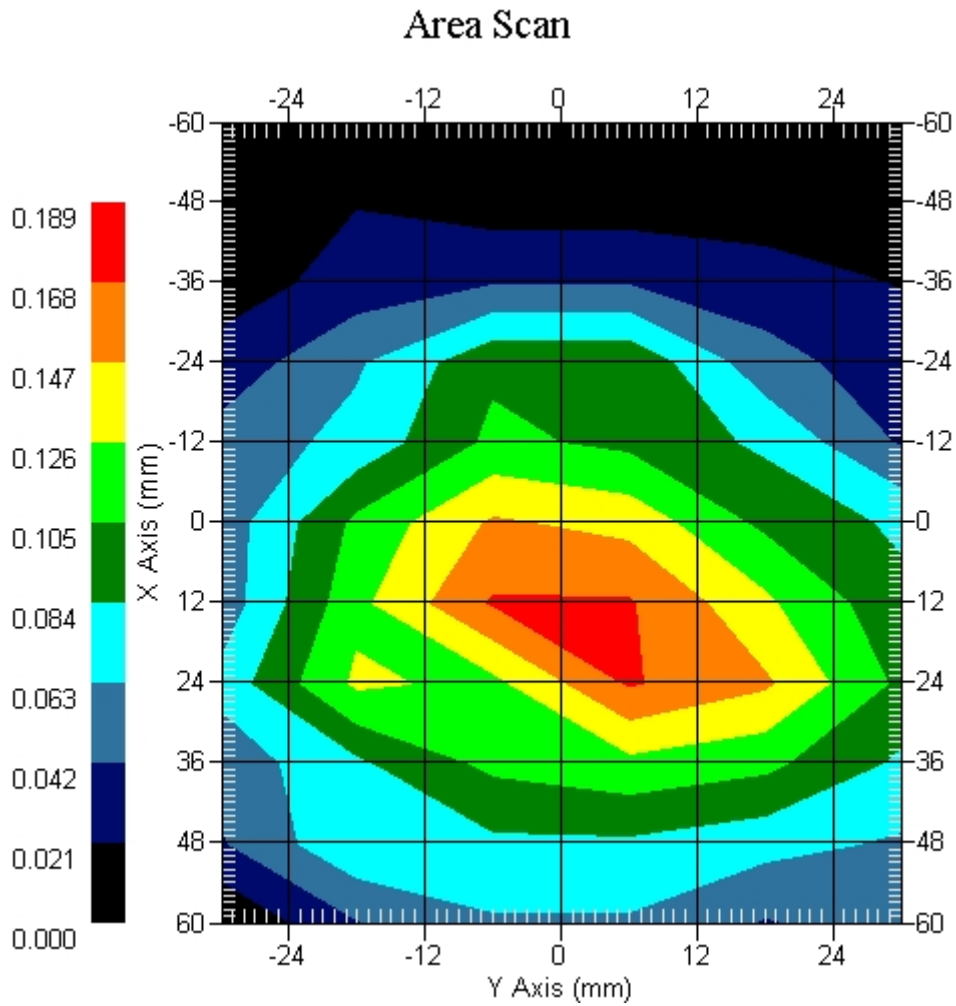
Crest Factor : 1
 Tissue Temp. : 21.20 °C
 Ambient Temp. : 21.80 °C
 Area Scan : 11x6x1 : Measurement x=12mm, y=12mm, z=4mm
 Zoom Scan : 5x5x8 : Measurement x=8mm, y=8mm, z=4mm
 Power Drift-Start : 0.031 W/kg
 Power Drift-Finish: 0.031 W/kg
 Power Drift (%) : -0.144

DUT Position : Touch
 Channel : 4132



1 gram SAR value : 0.162 W/kg
 10 gram SAR value : 0.123 W/kg
 Area Scan Peak SAR : 0.170 W/kg
 Zoom Scan Peak SAR : 0.250 W/kg

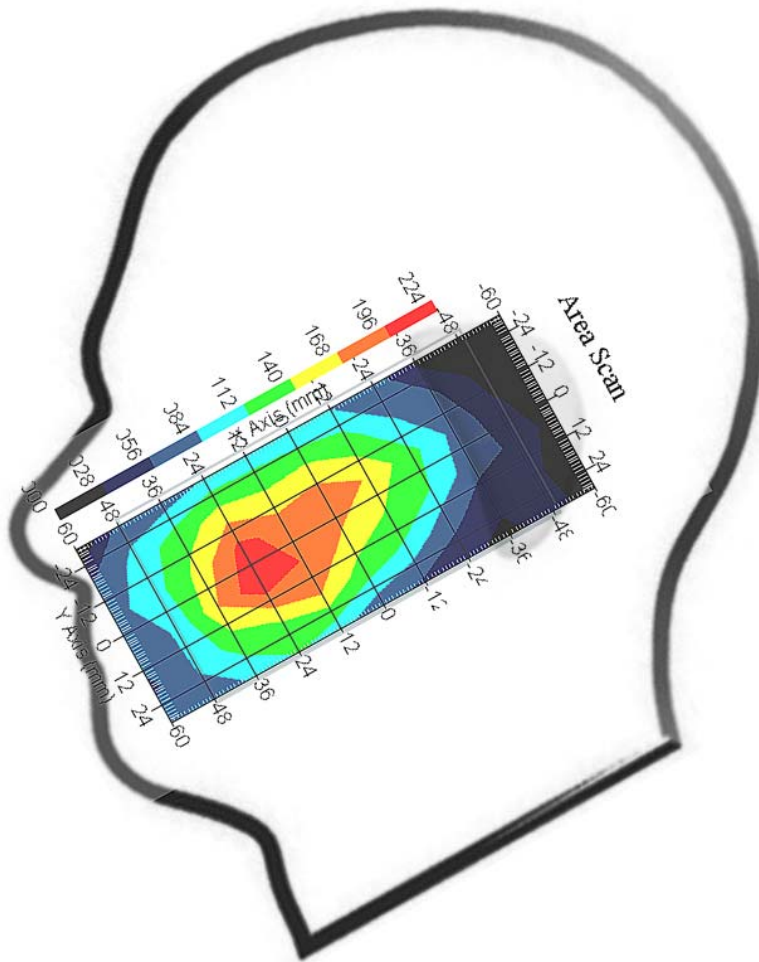
This is previous page plot (zoom in)



Measurement Data

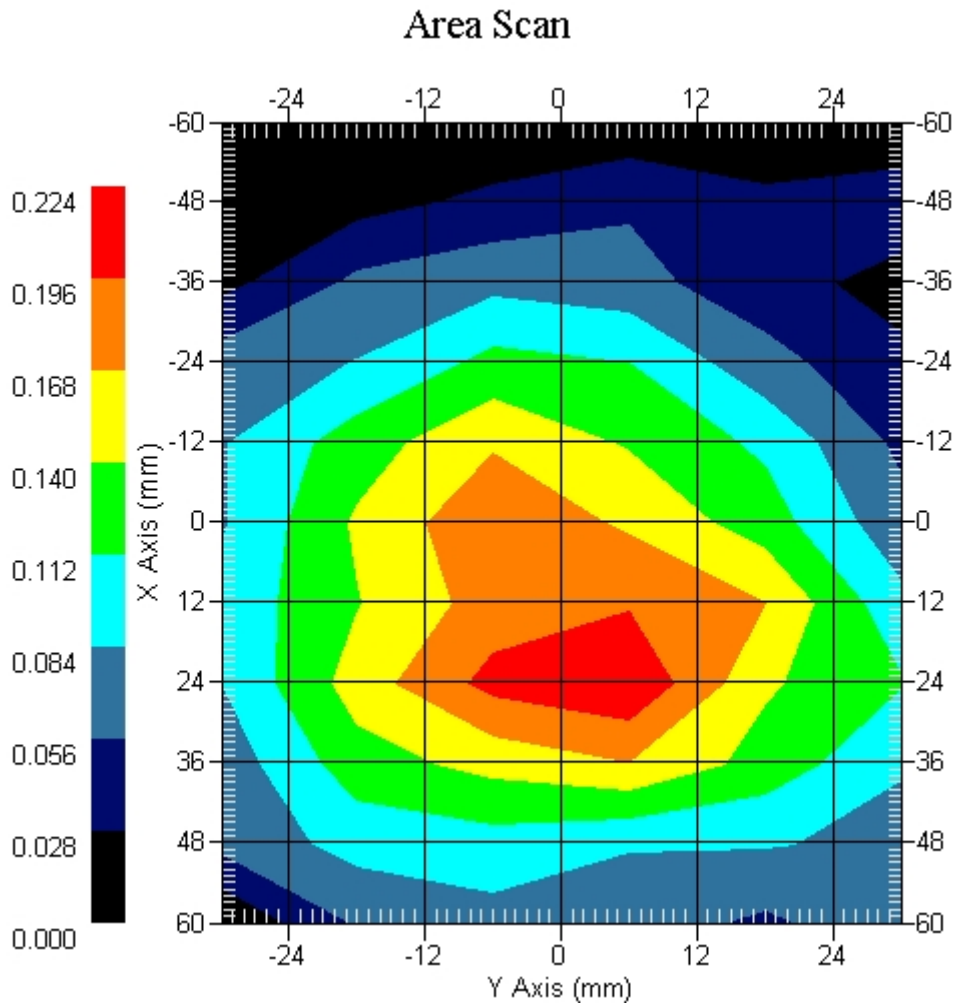
Crest Factor : 1
Tissue Temp. : 21.20 °C
Ambient Temp. : 21.80 °C
Area Scan : 11x6x1 : Measurement x=12mm, y=12mm, z=4mm
Zoom Scan : 5x5x8 : Measurement x=8mm, y=8mm, z=4mm
Power Drift-Start : 0.043 W/kg
Power Drift-Finish: 0.041 W/kg
Power Drift (%) : -3.792

DUT Position : Touch
Channel : 4183



1 gram SAR value : 0.213 W/kg
10 gram SAR value : 0.152 W/kg
Area Scan Peak SAR : 0.221 W/kg
Zoom Scan Peak SAR : 0.310 W/kg

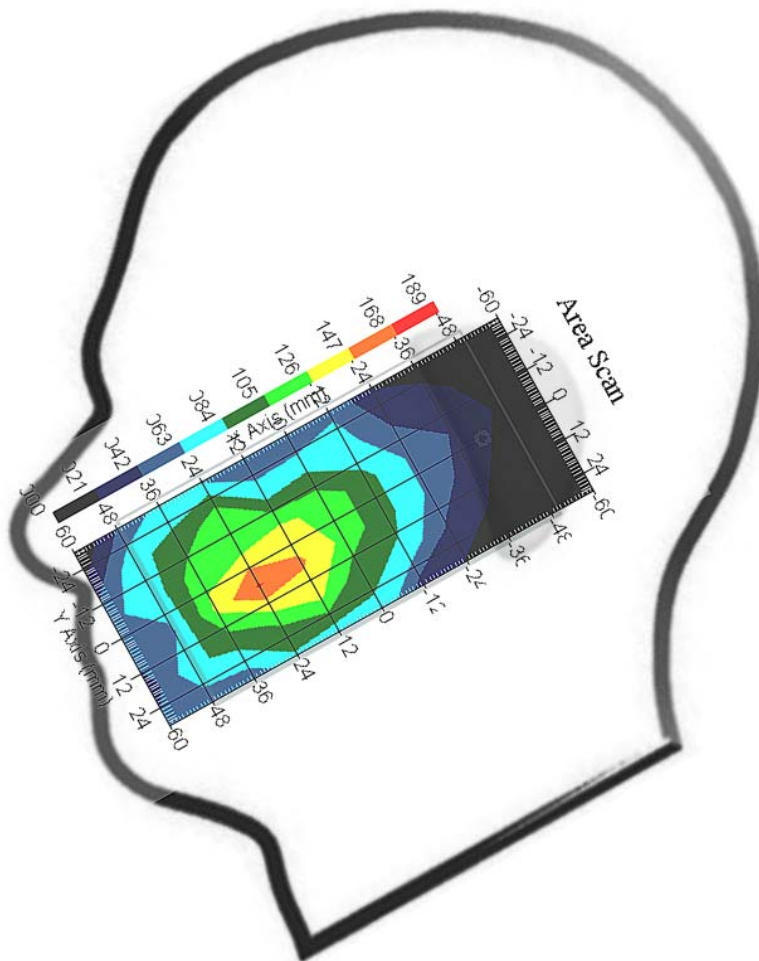
This is previous page plot (zoom in)



Measurement Data

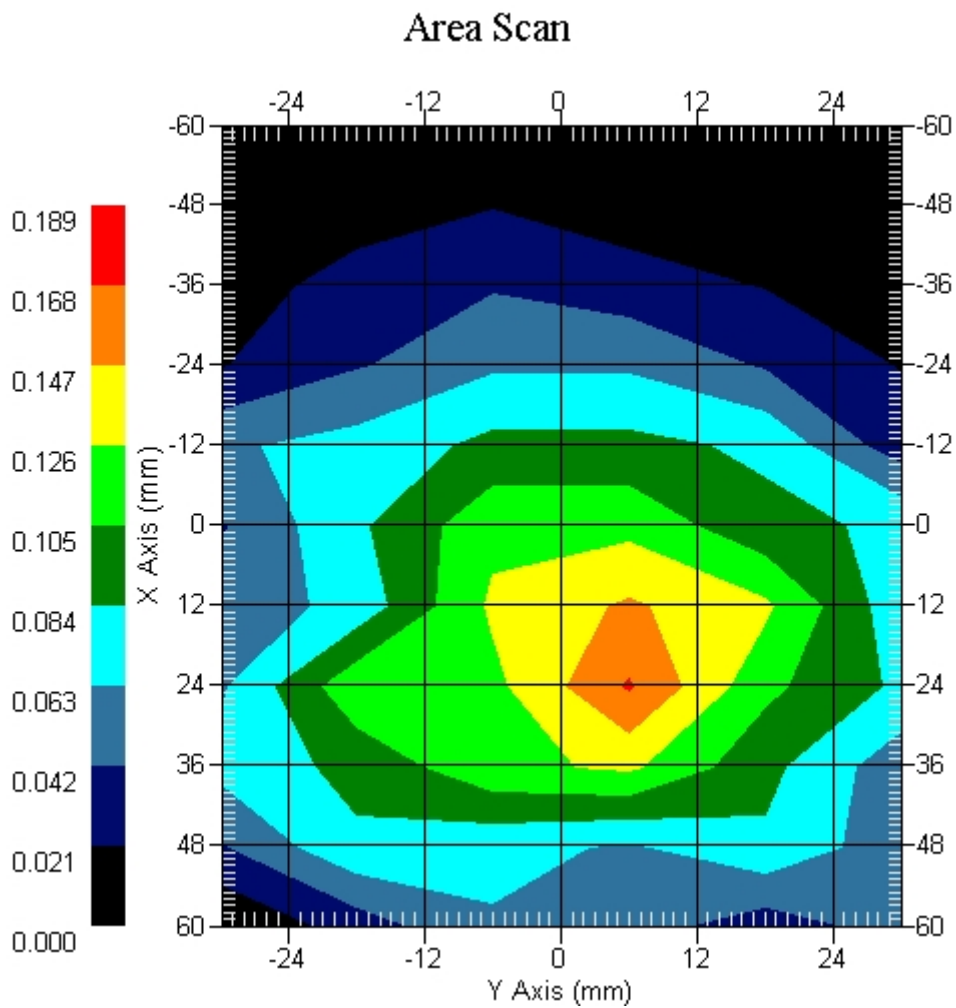
Crest Factor : 1
Tissue Temp. : 21.20 °C
Ambient Temp. : 21.80 °C
Area Scan : 11x6x1 : Measurement x=12mm, y=12mm, z=4mm
Zoom Scan : 5x5x8 : Measurement x=8mm, y=8mm, z=4mm
Power Drift-Start : 0.027 W/kg
Power Drift-Finish: 0.026 W/kg
Power Drift (%) : -1.353

DUT Position : Touch
Channel : 4233



1 gram SAR value : 0.165 W/kg
10 gram SAR value : 0.127 W/kg
Area Scan Peak SAR : 0.170 W/kg
Zoom Scan Peak SAR : 0.315 W/kg

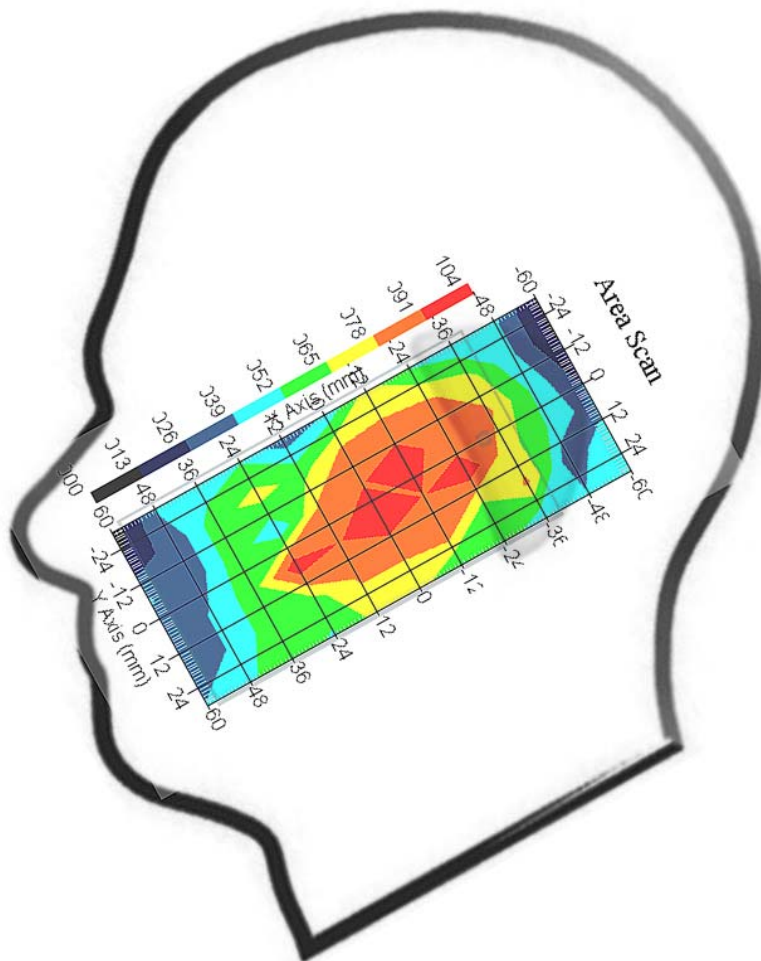
This is previous page plot (zoom in)



Measurement Data

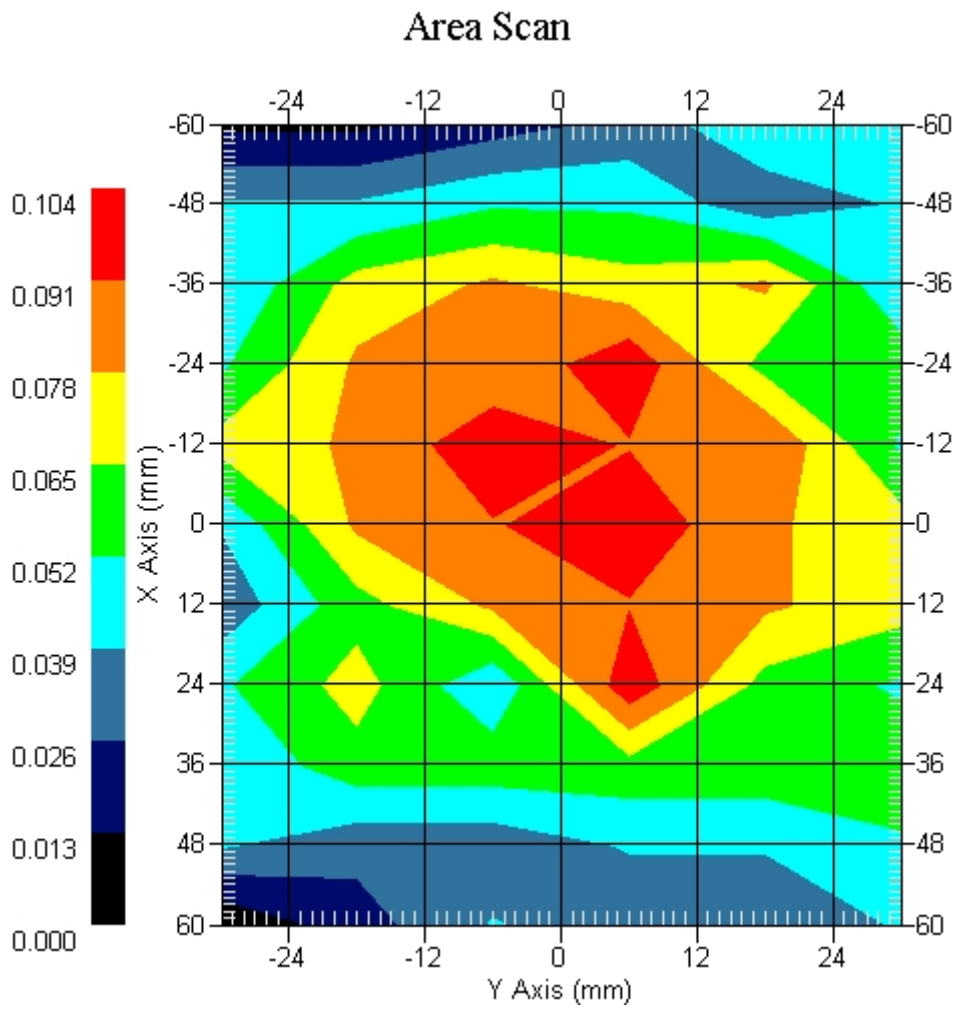
Crest Factor : 1
Tissue Temp. : 21.20 °C
Ambient Temp. : 21.80 °C
Area Scan : 11x6x1 : Measurement x=12mm, y=12mm, z=4mm
Zoom Scan : 5x5x8 : Measurement x=8mm, y=8mm, z=4mm
Power Drift-Start : 0.061 W/kg
Power Drift-Finish: 0.058 W/kg
Power Drift (%) : -4.918

DUT Position : 15° Tilt
Channel : 4132



1 gram SAR value : 0.081 W/kg
10 gram SAR value : 0.063 W/kg
Area Scan Peak SAR : 0.100 W/kg
Zoom Scan Peak SAR : 0.120 W/kg

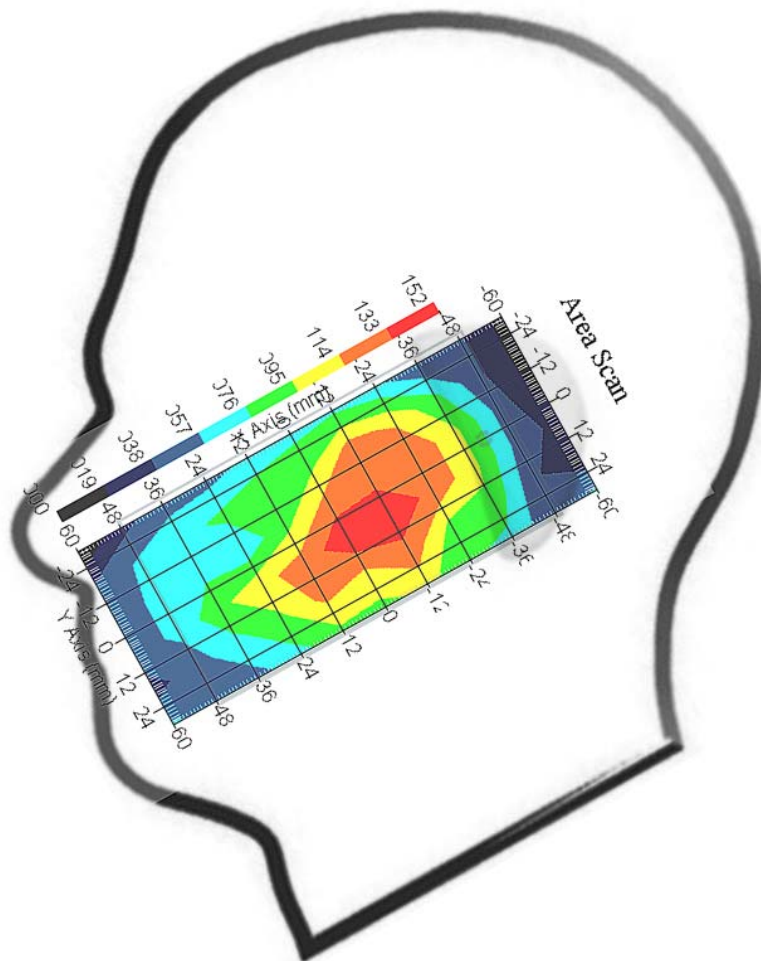
This is previous page plot (zoom in)



Measurement Data

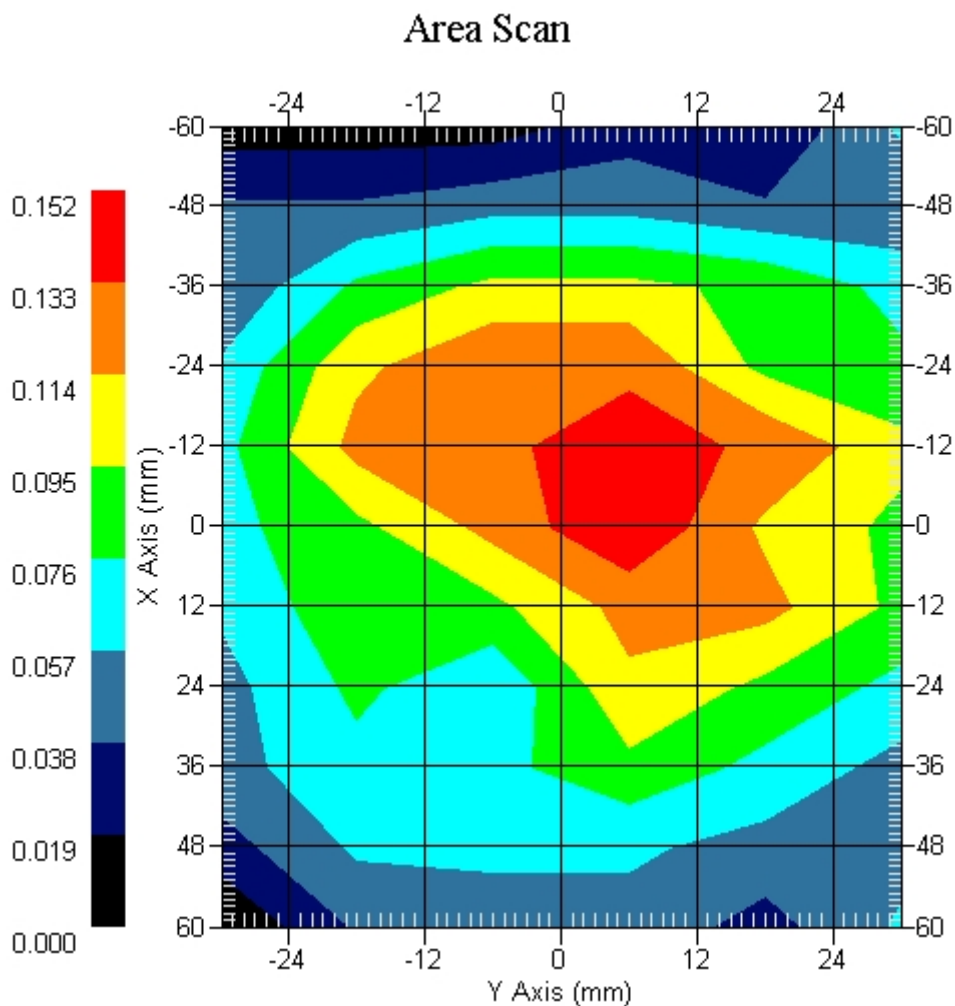
Crest Factor : 1
 Tissue Temp. : 21.20 °C
 Ambient Temp. : 21.80 °C
 Area Scan : 11x6x1 : Measurement x=12mm, y=12mm, z=4mm
 Zoom Scan : 5x5x8 : Measurement x=8mm, y=8mm, z=4mm
 Power Drift-Start : 0.070 W/kg
 Power Drift-Finish: 0.067 W/kg
 Power Drift (%) : -4.285

DUT Position : 15° Tilt
 Channel : 4183



1 gram SAR value : 0.122 W/kg
 10 gram SAR value : 0.101 W/kg
 Area Scan Peak SAR : 0.150 W/kg
 Zoom Scan Peak SAR : 0.170 W/kg

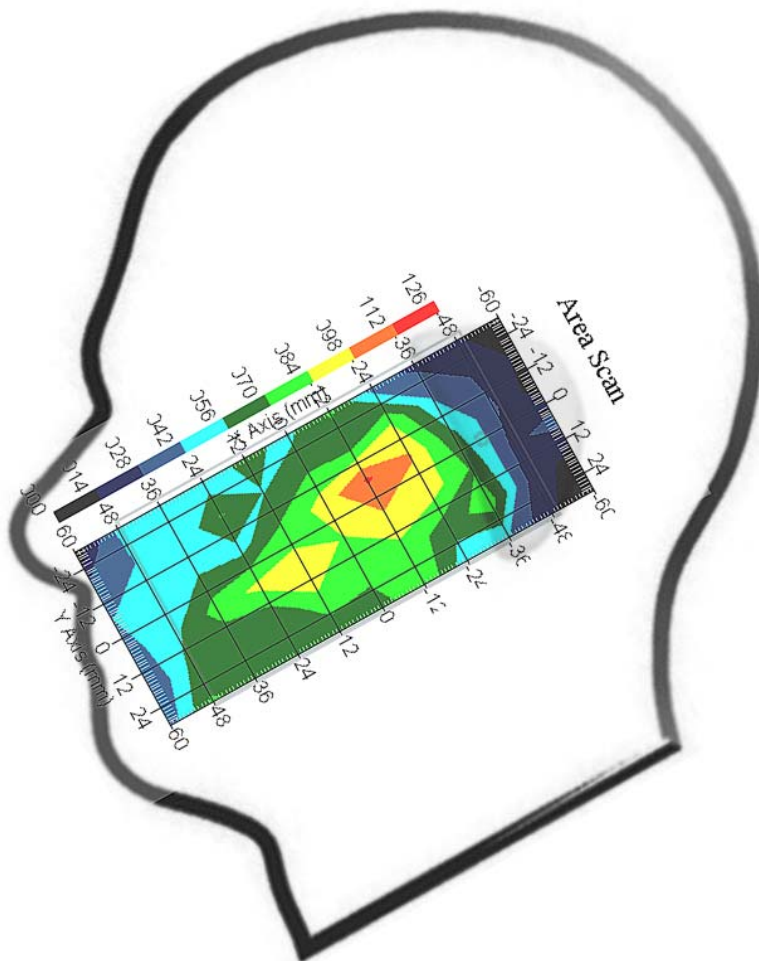
This is previous page plot (zoom in)



Measurement Data

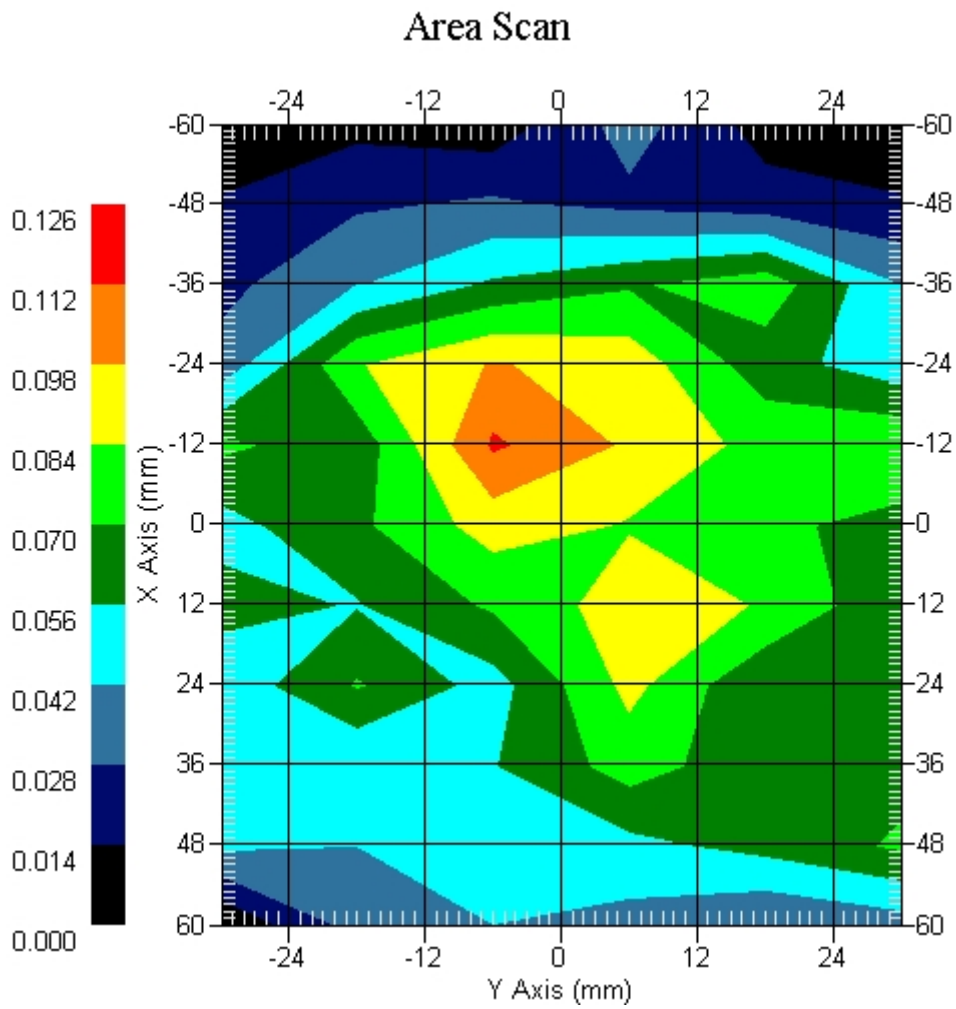
Crest Factor : 1
Tissue Temp. : 21.20 °C
Ambient Temp. : 21.80 °C
Area Scan : 11x6x1 : Measurement x=12mm, y=12mm, z=4mm
Zoom Scan : 5x5x8 : Measurement x=8mm, y=8mm, z=4mm
Power Drift-Start : 0.050 W/kg
Power Drift-Finish: 0.048 W/kg
Power Drift (%) : -4.000

DUT Position : 15° Tilt
Channel : 4233



1 gram SAR value : 0.094 W/kg
10 gram SAR value : 0.071 W/kg
Area Scan Peak SAR : 0.114 W/kg
Zoom Scan Peak SAR : 0.140 W/kg

This is previous page plot (zoom in)



ALSAS-10U VER 2.3.6 APREL Laboratories
SAR Test Report-WCDMA Band VReport Date : 11-Feb-2009
Measurement Date : 11-Feb-2009

Product Data

Device Name : Smart Handheld
Type : Std Form Cell Phone
Model : acer & glofiish
Frequency : 850.00 MHz
Max. Transmit Pwr : 2 W
Drift Time : 0 min(s)
Length : 117.6 mm
Width : 63.5 mm
Depth : 12.9 mm
Antenna Type : Internal

Phantom Data

Type : Uni-Phantom
Size (mm) : 280 x 280 x 200
Location : Center

Tissue Data

Type : BODY
Serial No. : 322-B
Frequency : 835.00 MHz
Last Calib. Date : 11-Feb-2009
Temperature : 21.20 °C
Ambient Temp. : 21.80 °C
Humidity : 52.00 RH%
Epsilon : 55.87 F/m
Sigma : 0.94 S/m
Density : 1000.00 kg/cu. m

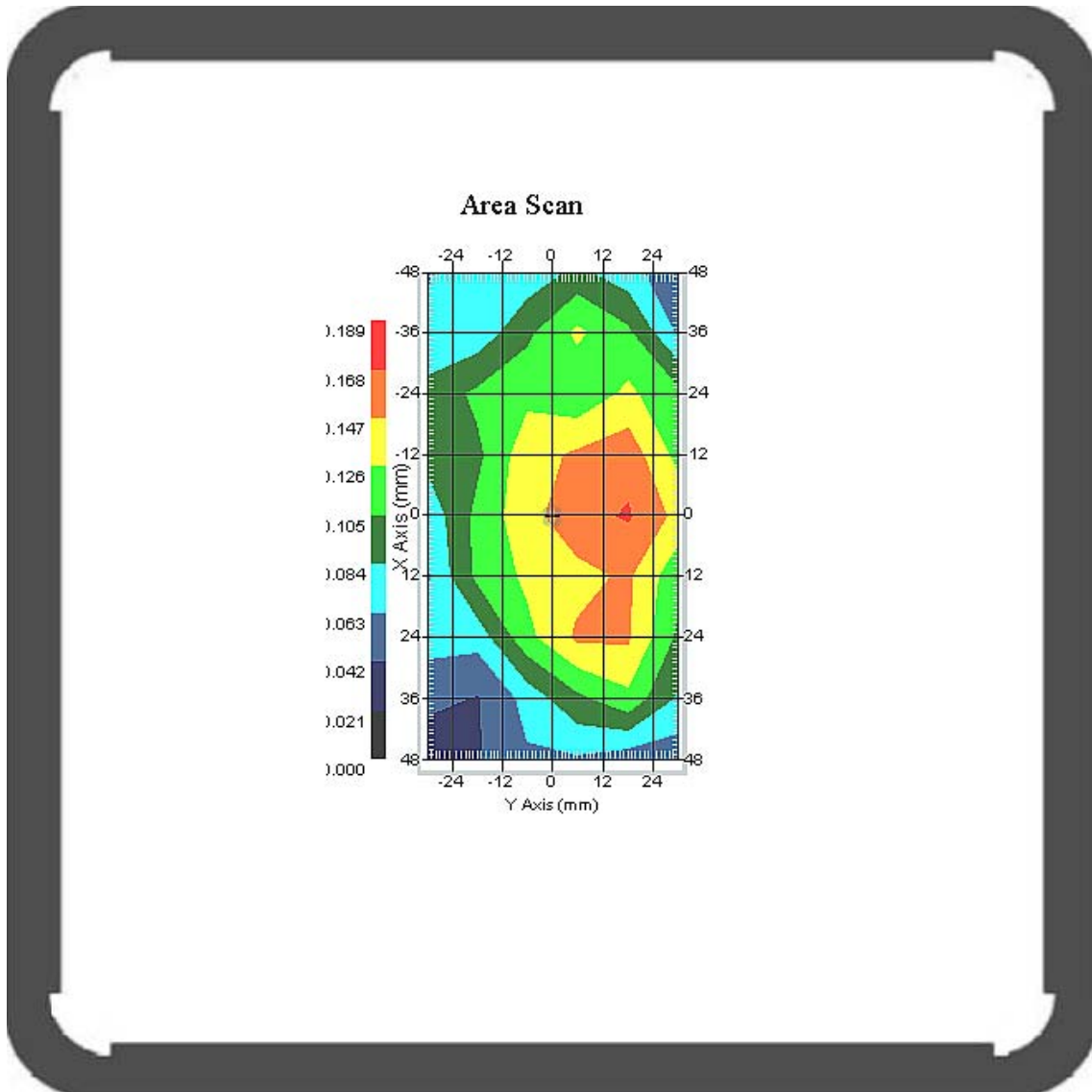
Probe Data

Name : Probe 265
Model : E020
Type : E-Field Triangle
Serial No. : 265
Last Calib. Date : 09-May-2008
Frequency : 835.00 MHz
Duty Cycle Factor: 1
Conversion Factor: 6.6
Probe Sensitivity: 1.20 1.20 1.20 $\mu\text{V}/(\text{V}/\text{m})^2$
Compression Point: 95.00 mV
Offset : 1.56 mm

Measurement Data

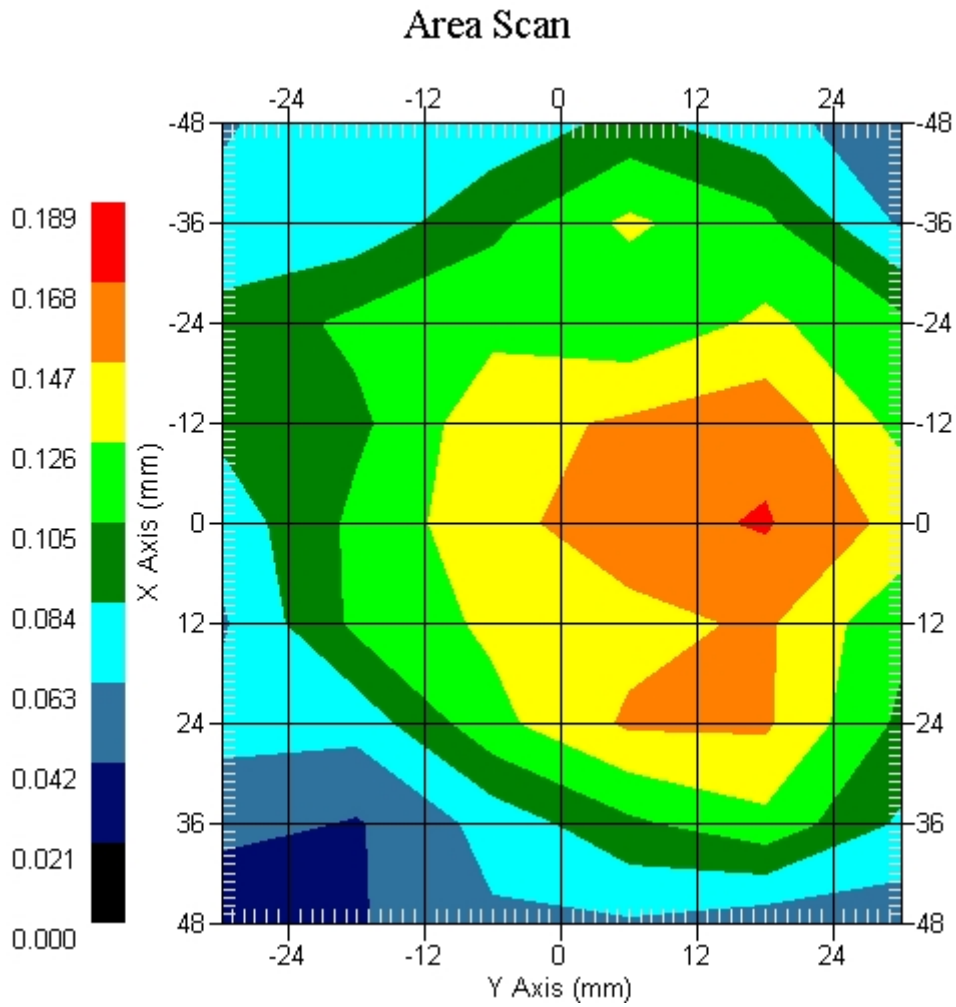
Crest Factor : 1
Tissue Temp. : 21.20 °C
Ambient Temp. : 21.80 °C
Area Scan : 9x6x1 : Measurement x=12mm, y=12mm, z=4mm
Zoom Scan : 5x5x8 : Measurement x=8mm, y=8mm, z=4mm
Power Drift-Start : 0.143 W/kg
Power Drift-Finish: 0.146 W/kg
Power Drift (%) : 2.468

DUT Position : Touch
Channel : 4132



1 gram SAR value : 0.161 W/kg
10 gram SAR value : 0.138 W/kg
Area Scan Peak SAR : 0.170 W/kg
Zoom Scan Peak SAR : 0.190 W/kg

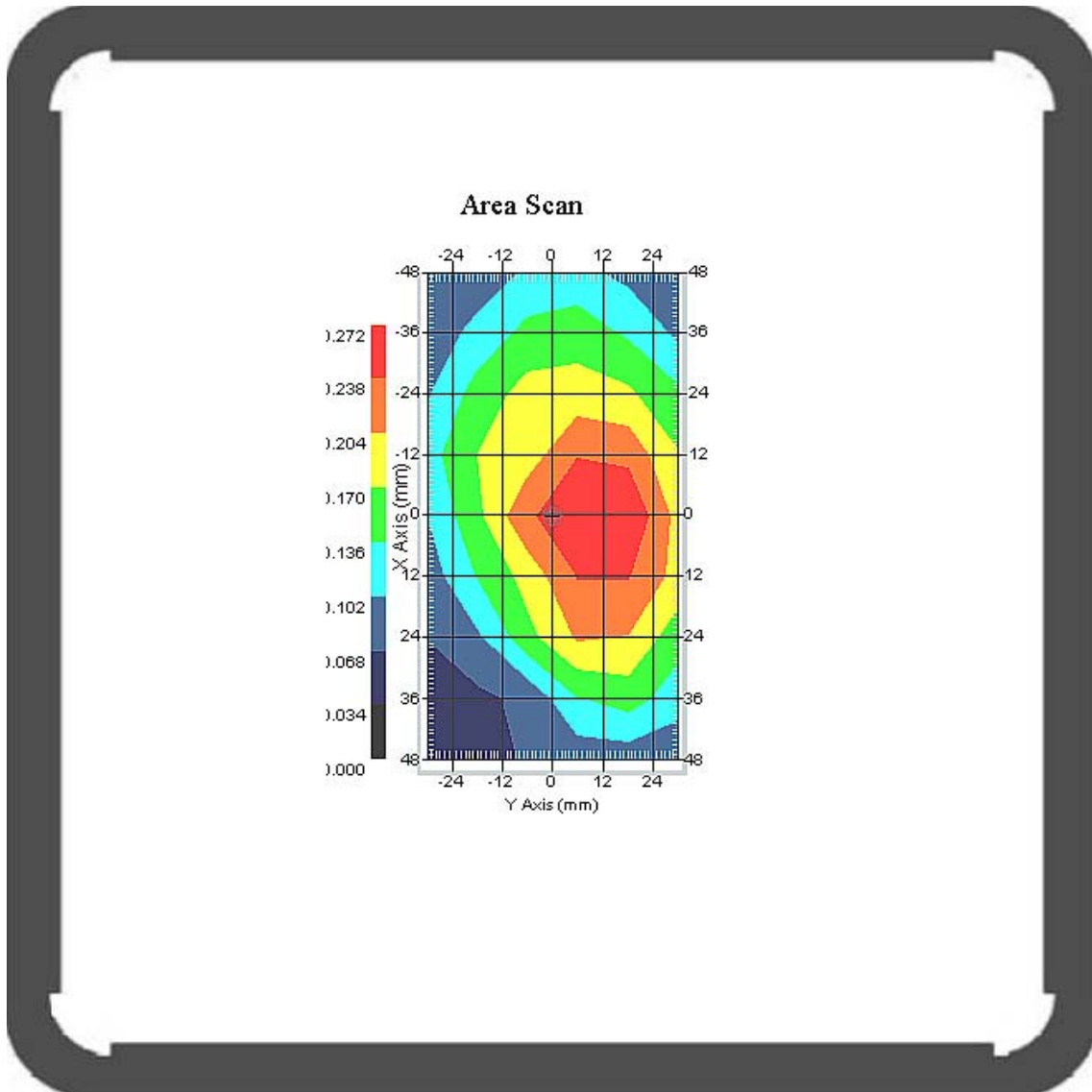
This is previous page plot (zoom in)



Measurement Data

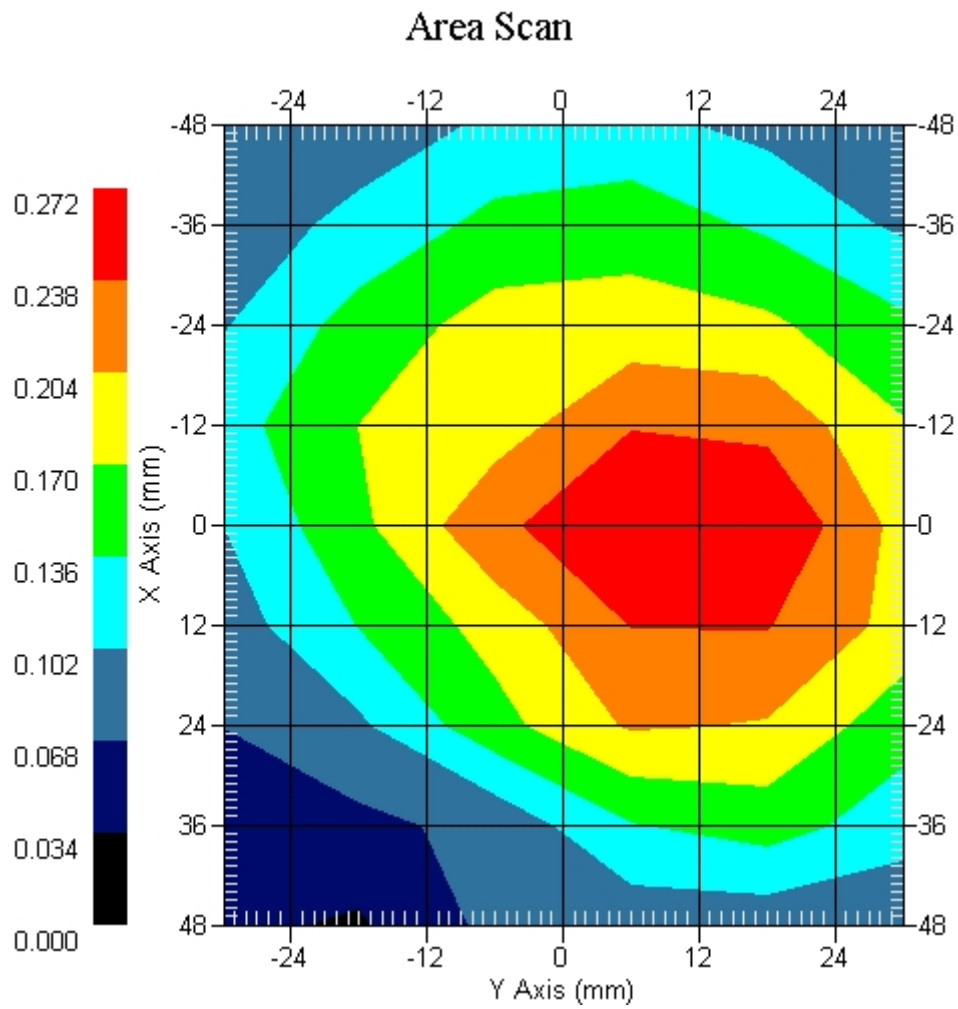
Crest Factor : 1
Tissue Temp. : 21.20 °C
Ambient Temp. : 21.80 °C
Area Scan : 9x6x1 : Measurement x=12mm, y=12mm, z=4mm
Zoom Scan : 5x5x8 : Measurement x=8mm, y=8mm, z=4mm
Power Drift-Start : 0.229 W/kg
Power Drift-Finish: 0.237 W/kg
Power Drift (%) : 3.223

DUT Position : Touch
Channel : 4183



1 gram SAR value : 0.244 W/kg
10 gram SAR value : 0.169 W/kg
Area Scan Peak SAR : 0.272 W/kg
Zoom Scan Peak SAR : 0.330 W/kg

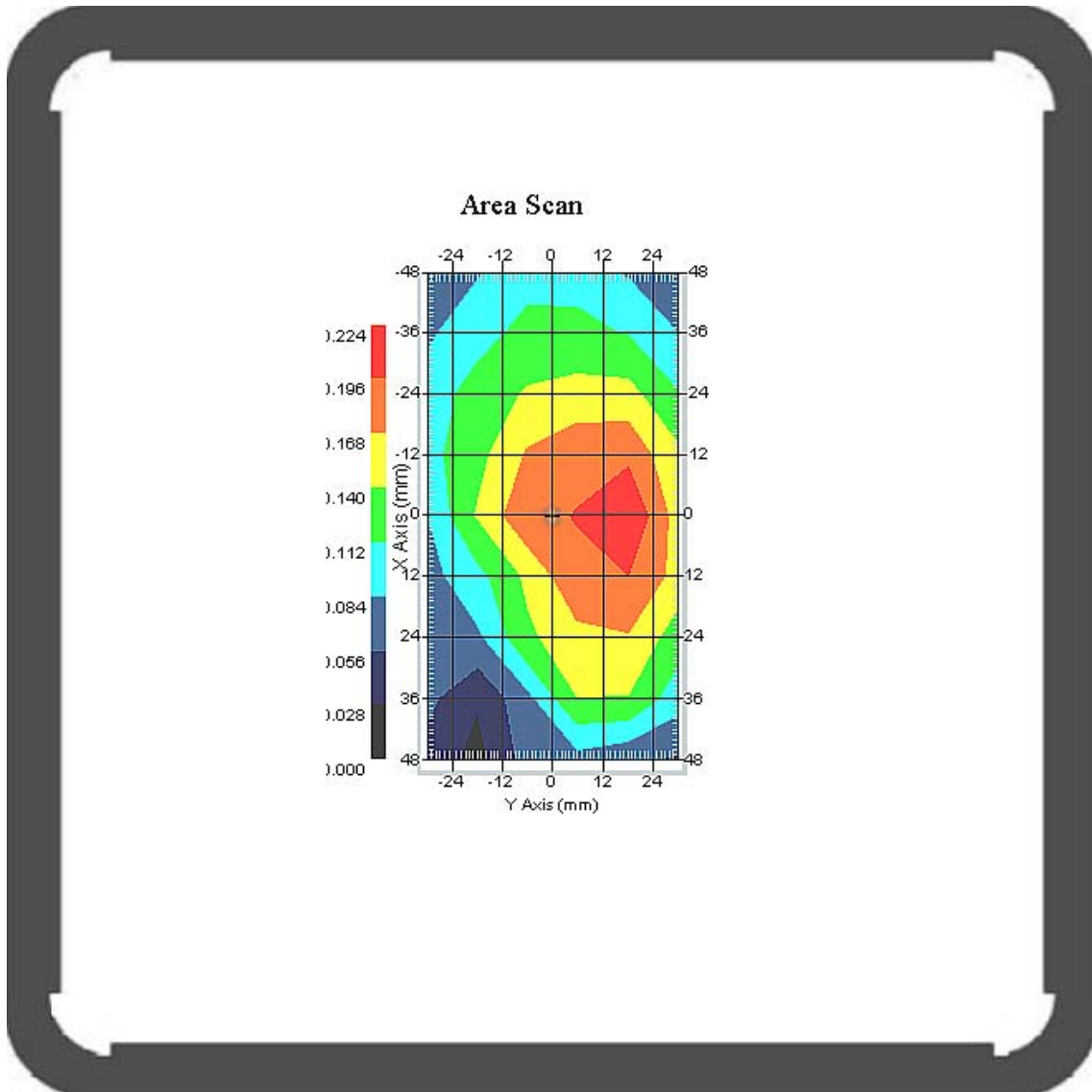
This is previous page plot (zoom in)



Measurement Data

Crest Factor : 1
Tissue Temp. : 21.20 °C
Ambient Temp. : 21.80 °C
Area Scan : 9x6x1 : Measurement x=12mm, y=12mm, z=4mm
Zoom Scan : 5x5x8 : Measurement x=8mm, y=8mm, z=4mm
Power Drift-Start : 0.186 W/kg
Power Drift-Finish: 0.186 W/kg
Power Drift (%) : 0.353

DUT Position : Touch
Channel : 4233



1 gram SAR value : 0.217 W/kg
10 gram SAR value : 0.158 W/kg
Area Scan Peak SAR : 0.224 W/kg
Zoom Scan Peak SAR : 0.240 W/kg

This is previous page plot (zoom in)

