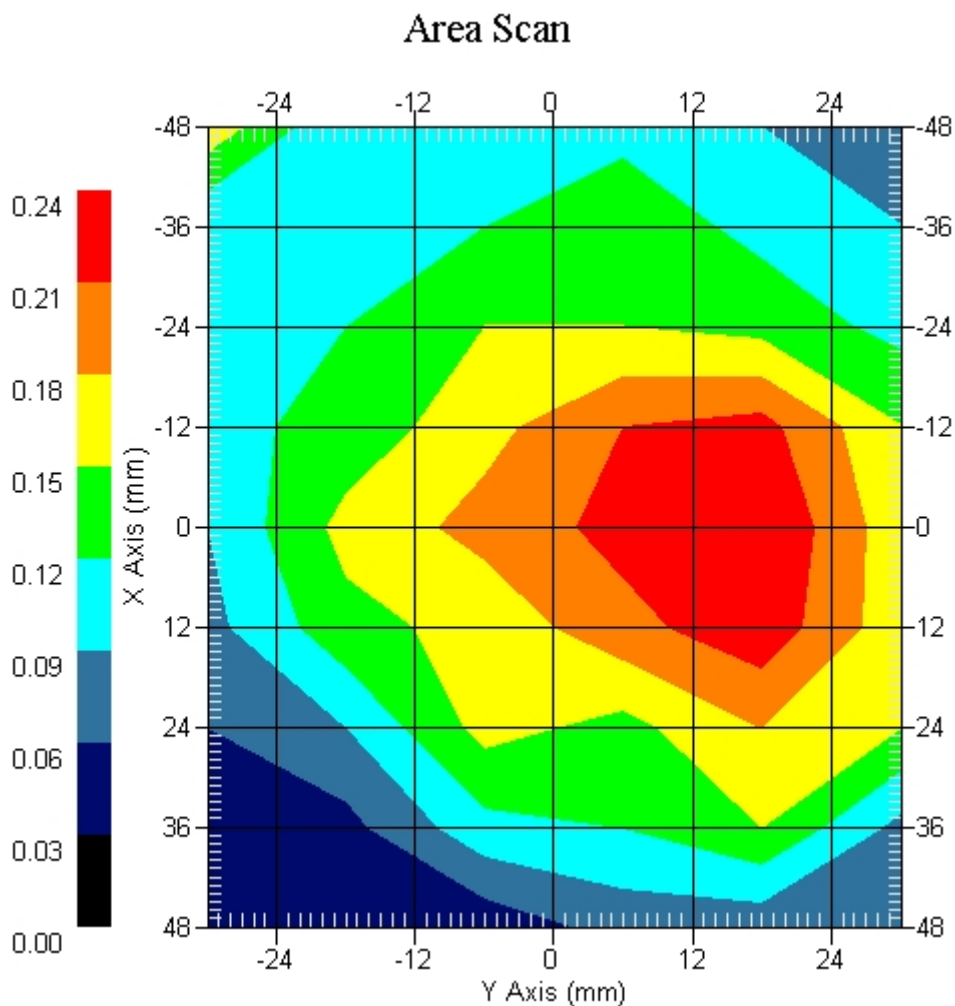


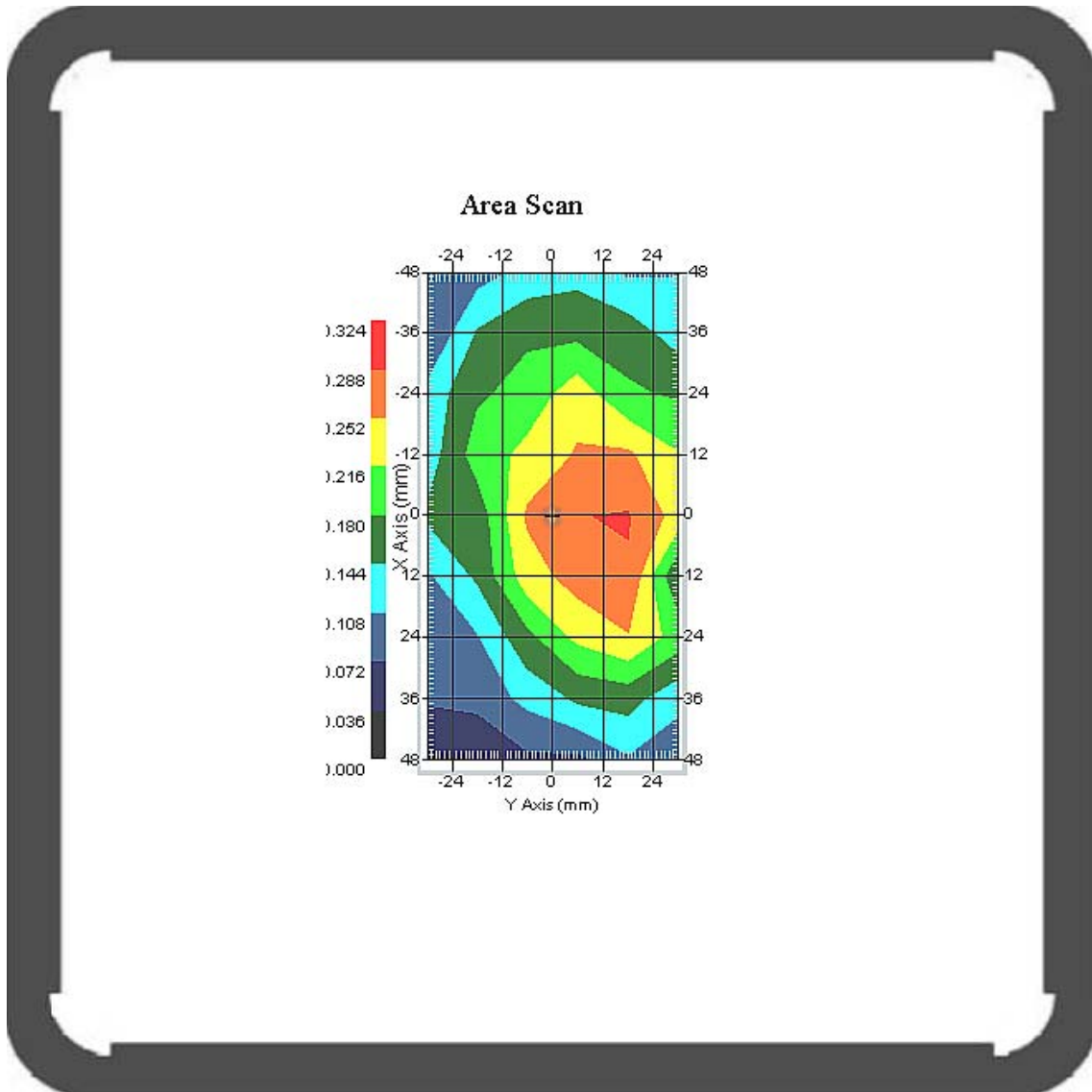
This is previous page plot (zoom in)



Measurement Data

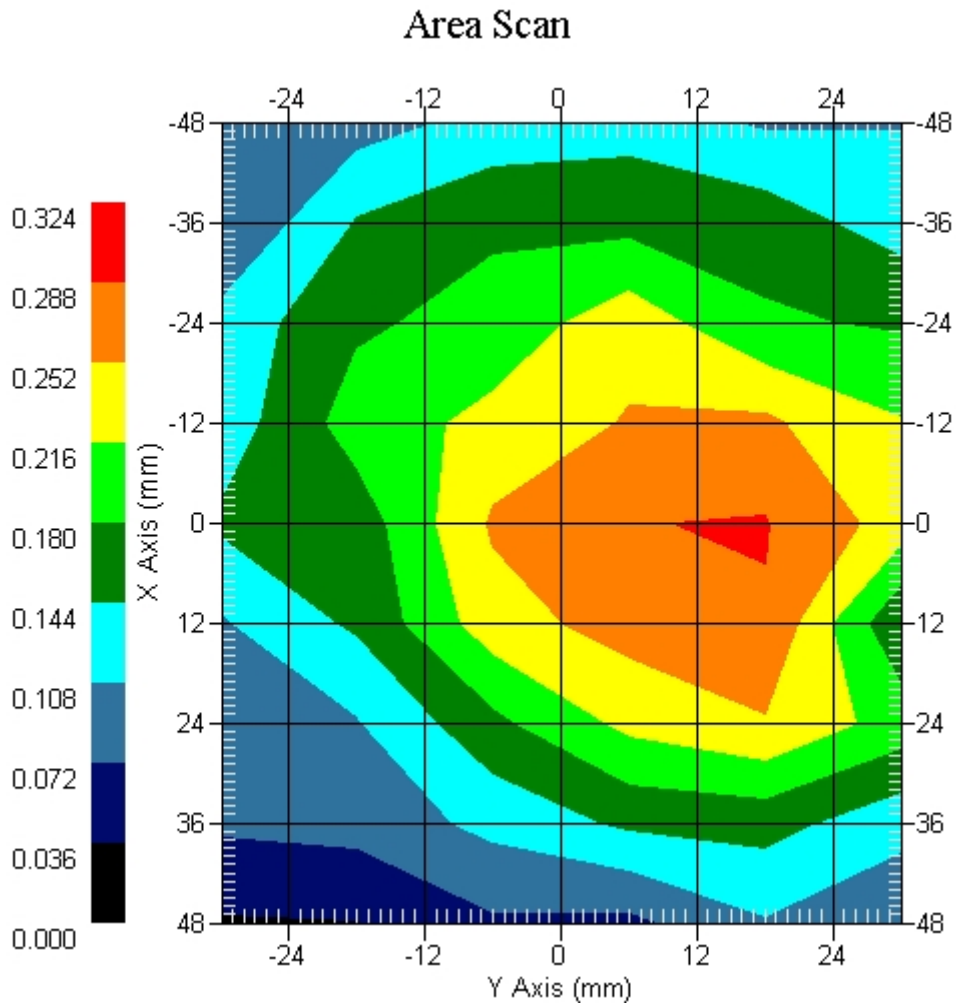
Crest Factor : 8  
Tissue Temp. : 21.10 °C  
Ambient Temp. : 21.80 °C  
Area Scan : 9x6x1 : Measurement x=12mm, y=12mm, z=4mm  
Zoom Scan : 5x5x8 : Measurement x=8mm, y=8mm, z=4mm  
Power Drift-Start : 0.257 W/kg  
Power Drift-Finish: 0.249 W/kg  
Power Drift (%) : -3.112

DUT Position : Touch  
Channel : 251



1 gram SAR value : 0.279 W/kg  
10 gram SAR value : 0.185 W/kg  
Area Scan Peak SAR : 0.290 W/kg  
Zoom Scan Peak SAR : 0.460 W/kg

This is previous page plot (zoom in)



## ALSAS-10U VER 2.3.6 APREL Laboratories

## SAR Test Report- GSM 850 GPRS 2 Slot

Report Date : 10-Feb-2009  
Measurement Date : 10-Feb-2009

## Product Data

Device Name : Smart Handheld  
Type : Std Form Cell Phone  
Model : acer & glofiish  
Frequency : 850.00 MHz  
Max. Transmit Pwr : 2 W  
Drift Time : 0 min(s)  
Length : 117.6 mm  
Width : 63.5 mm  
Depth : 12.9 mm  
Antenna Type : Internal

## Phantom Data

Type : Uni-Phantom  
Size (mm) : 280 x 280 x 200  
Location : Center

## Tissue Data

Type : BODY  
Serial No. : 322-B  
Frequency : 835.00 MHz  
Last Calib. Date : 10-Feb-2009  
Temperature : 21.10 °C  
Ambient Temp. : 21.80 °C  
Humidity : 52.00 RH%  
Epsilon : 55.91 F/m  
Sigma : 0.98 S/m  
Density : 1000.00 kg/cu. m

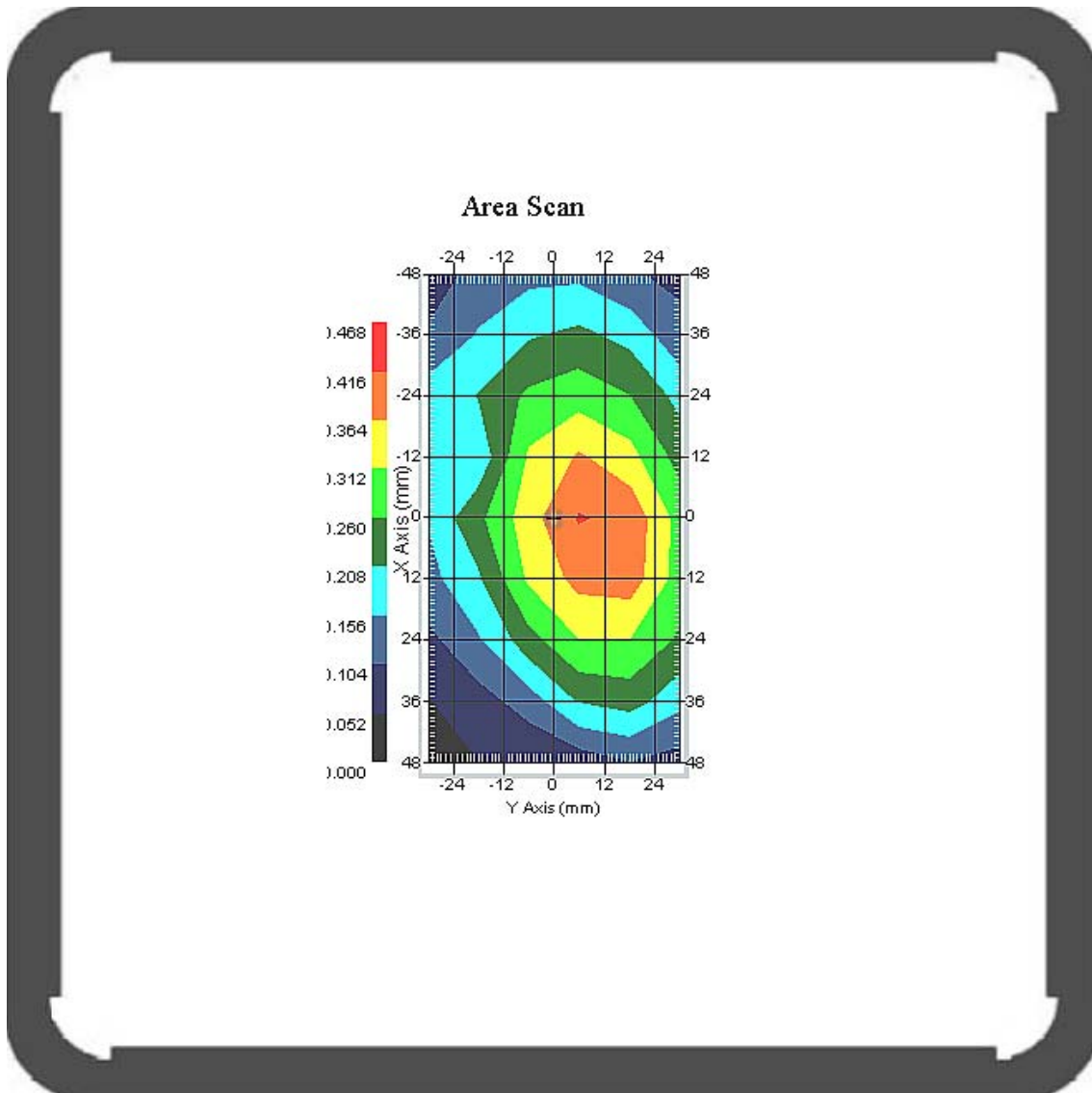
## Probe Data

Name : Probe 265  
Model : E020  
Type : E-Field Triangle  
Serial No. : 265  
Last Calib. Date : 09-May-2008  
Frequency : 835.00 MHz  
Duty Cycle Factor: 2.67  
Conversion Factor: 6.6  
Probe Sensitivity: 1.20 1.20 1.20  $\mu\text{V}/(\text{V}/\text{m})^2$   
Compression Point: 95.00 mV  
Offset : 1.56 mm

Measurement Data

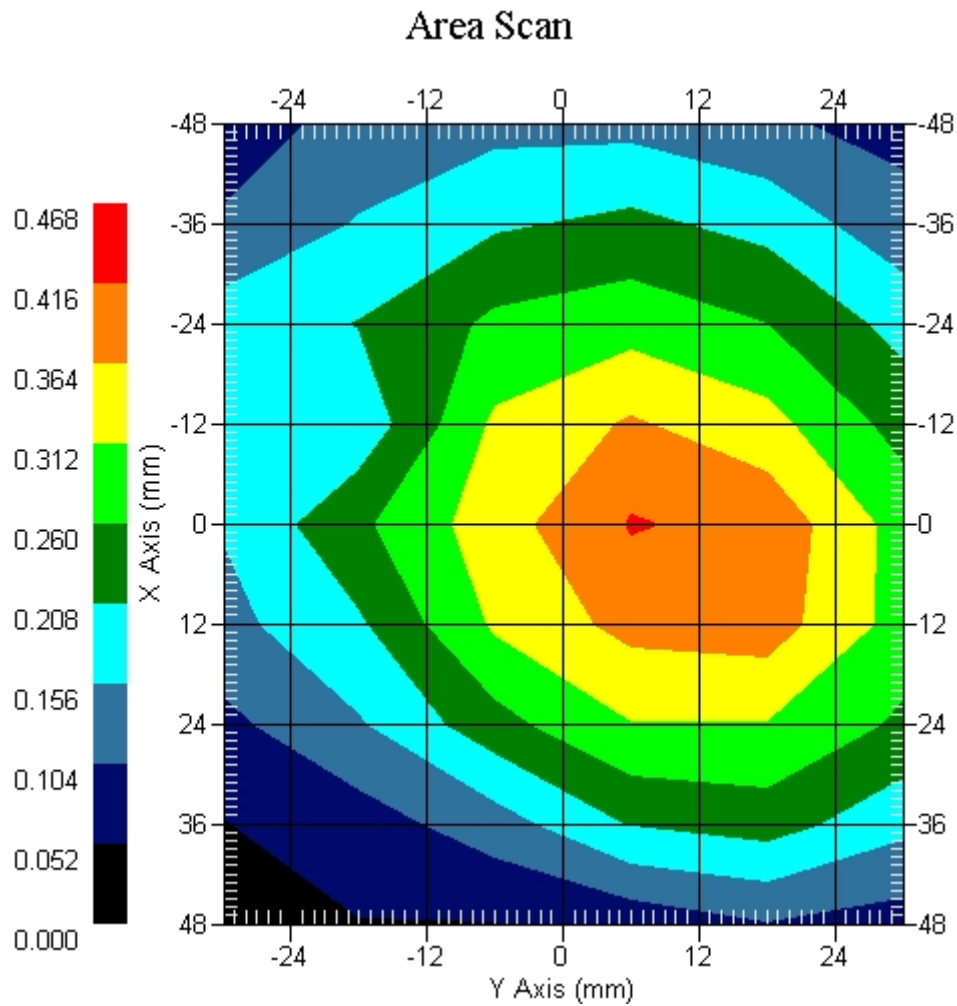
Crest Factor : 4  
Tissue Temp. : 21.10 °C  
Ambient Temp. : 21.80 °C  
Area Scan : 9x6x1 : Measurement x=12mm, y=12mm, z=4mm  
Zoom Scan : 5x5x8 : Measurement x=8mm, y=8mm, z=4mm  
Power Drift-Start : 0.212 W/kg  
Power Drift-Finish: 0.213 W/kg  
Power Drift (%) : 0.471

DUT Position : Touch  
Channel : 189



1 gram SAR value : 0.398 W/kg  
10 gram SAR value : 0.302 W/kg  
Area Scan Peak SAR : 0.420 W/kg  
Zoom Scan Peak SAR : 0.480 W/kg

This is previous page plot (zoom in)



ALSAS-10U VER 2.3.6 APREL Laboratories

SAR Test Report- GSM 850 GPRS 3 Slot

Report Date : 10-Feb-2009  
 Measurement Date : 10-Feb-2009

Product Data

Device Name : Smart Handheld  
 Type : Std Form Cell Phone  
 Model : acer & glofiish  
 Frequency : 850.00 MHz  
 Max. Transmit Pwr : 2 W  
 Drift Time : 0 min(s)  
 Length : 117.6 mm  
 Width : 63.5 mm  
 Depth : 12.9 mm  
 Antenna Type : Internal

Phantom Data

Type : Uni-Phantom  
 Size (mm) : 280 x 280 x 200  
 Location : Center

Tissue Data

Type : BODY  
 Serial No. : 322-B  
 Frequency : 835.00 MHz  
 Last Calib. Date : 10-Feb-2009  
 Temperature : 21.10 °C  
 Ambient Temp. : 21.80 °C  
 Humidity : 52.00 RH%  
 Epsilon : 55.91 F/m  
 Sigma : 0.98 S/m  
 Density : 1000.00 kg/cu. m

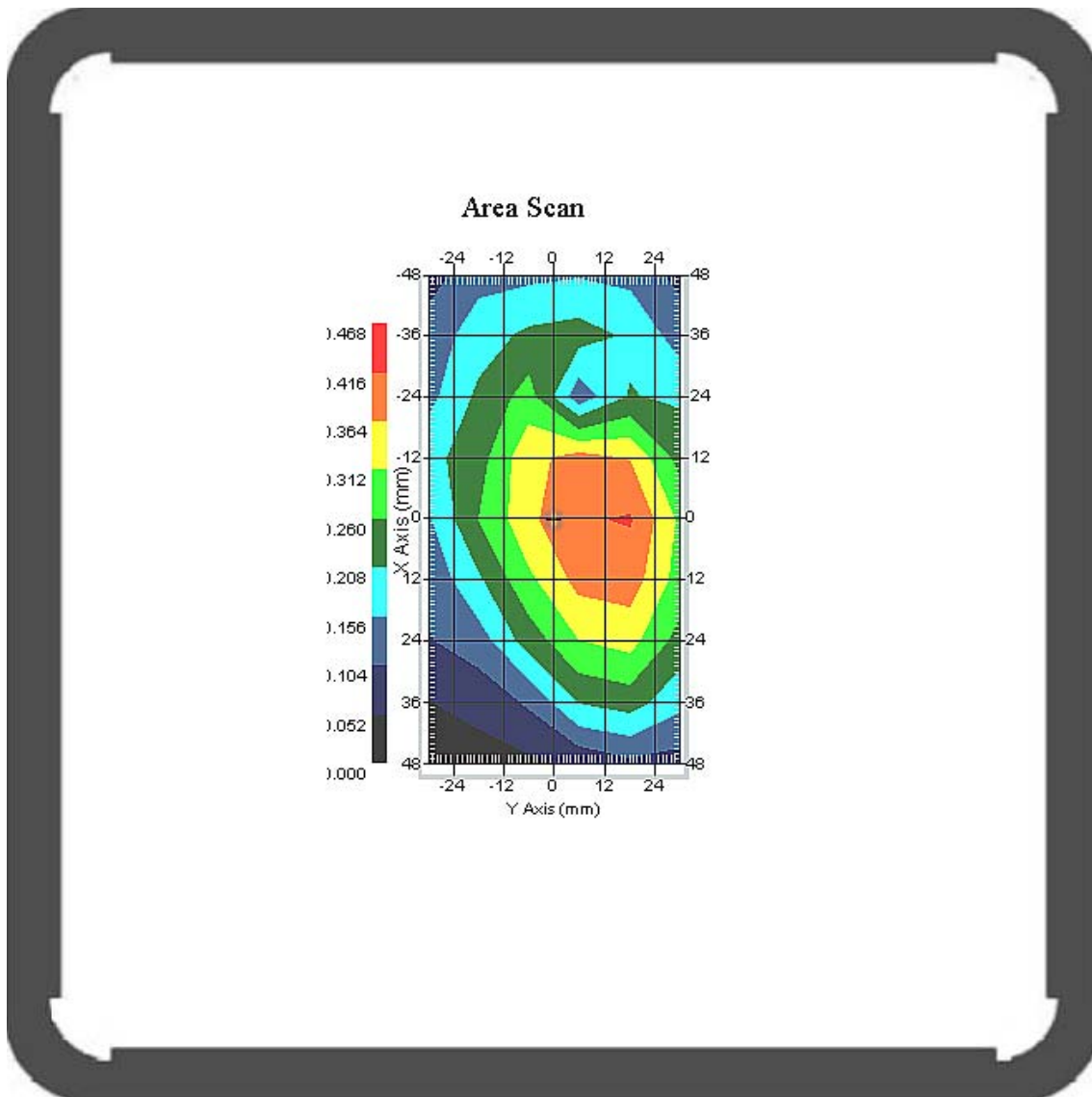
Probe Data

Name : Probe 265  
 Model : E020  
 Type : E-Field Triangle  
 Serial No. : 265  
 Last Calib. Date : 09-May-2008  
 Frequency : 835.00 MHz  
 Duty Cycle Factor: 2.67  
 Conversion Factor: 6.6  
 Probe Sensitivity: 1.20 1.20 1.20  $\mu\text{V}/(\text{V}/\text{m})^2$   
 Compression Point: 95.00 mV  
 Offset : 1.56 mm

Measurement Data

Crest Factor : 2.67  
 Tissue Temp. : 21.10 °C  
 Ambient Temp. : 21.80 °C  
 Area Scan : 9x6x1 : Measurement x=12mm, y=12mm, z=4mm  
 Zoom Scan : 5x5x8 : Measurement x=8mm, y=8mm, z=4mm  
 Power Drift-Start : 0.325 W/kg  
 Power Drift-Finish: 0.340 W/kg  
 Power Drift (%) : 4.649

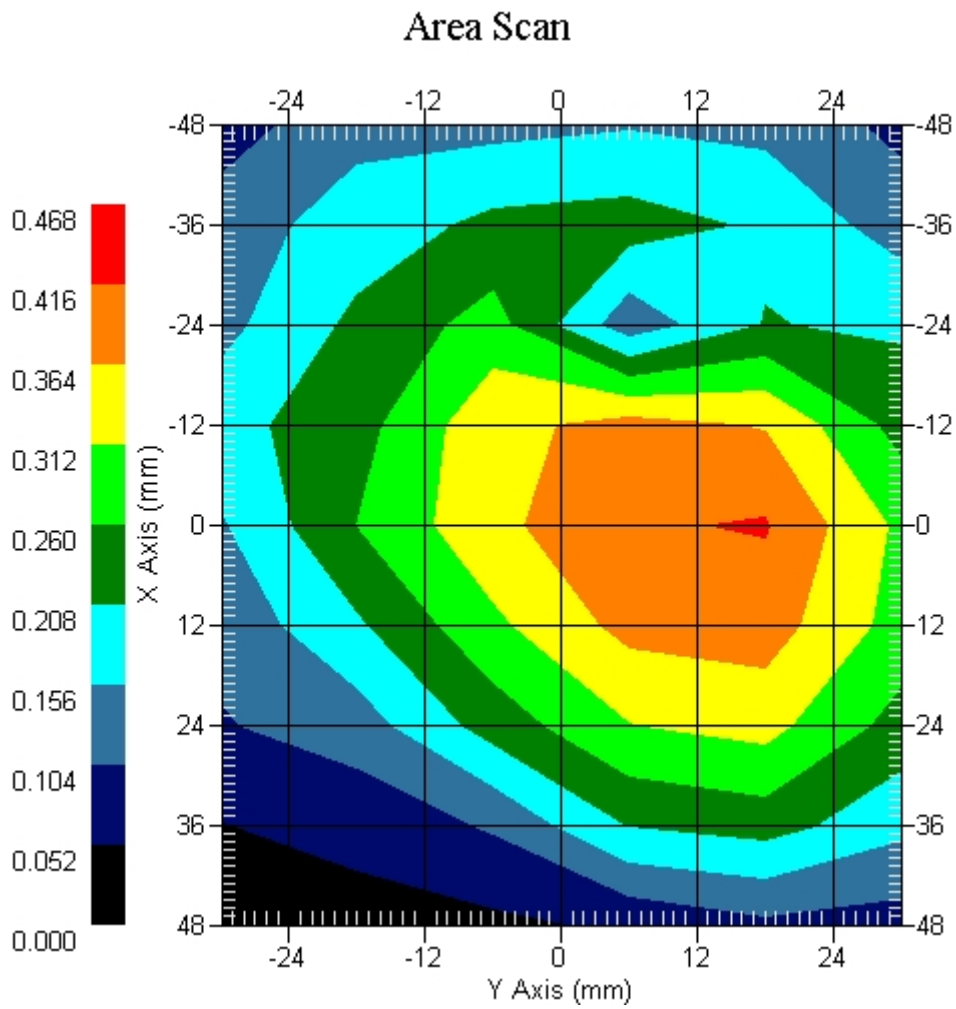
DUT Position : Touch  
 Channel : 128



1 gram SAR value : 0.298 W/kg  
 10 gram SAR value : 0.164 W/kg  
 Area Scan Peak SAR : 0.420 W/kg  
 Zoom Scan Peak SAR : 0.510 W/kg



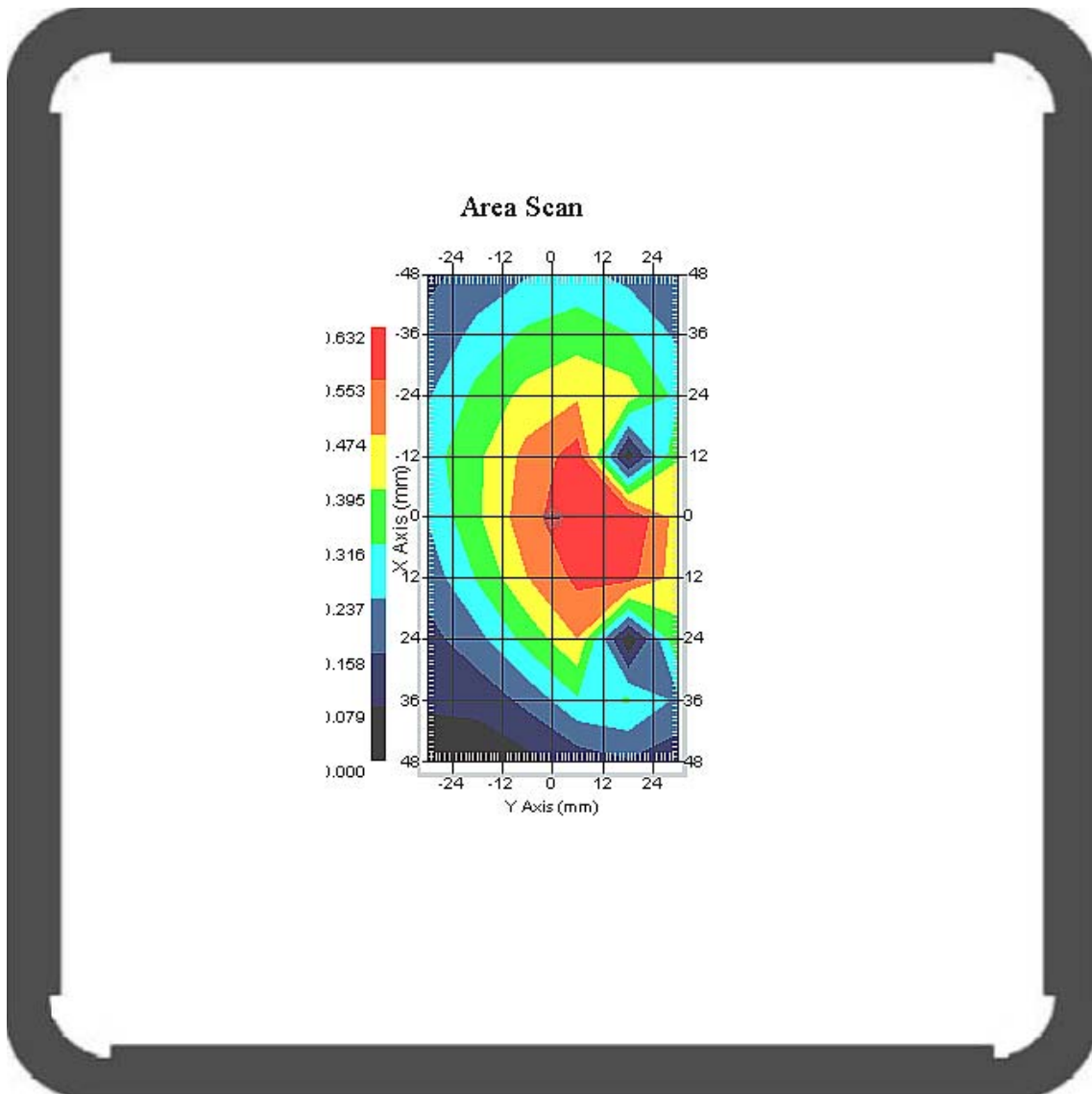
This is previous page plot (zoom in)



Measurement Data

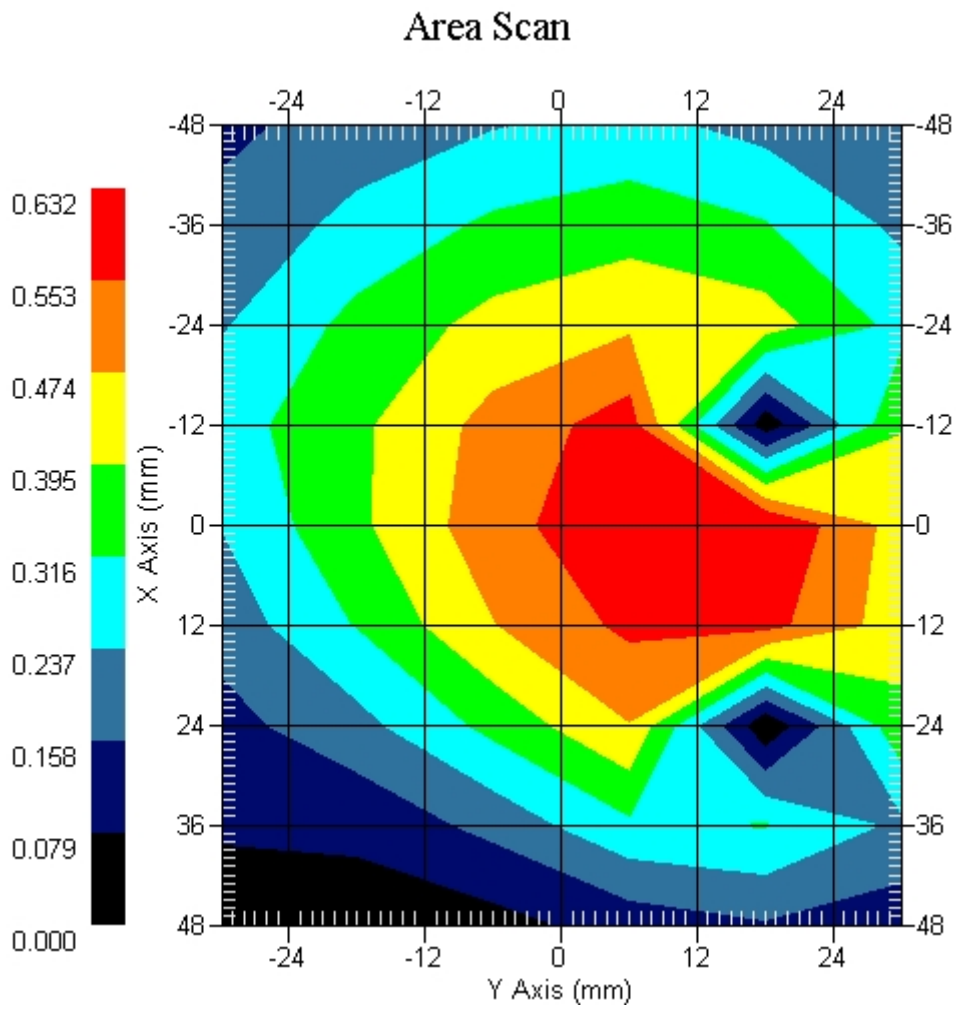
Crest Factor : 2.67  
Tissue Temp. : 21.10 °C  
Ambient Temp. : 21.80 °C  
Area Scan : 9x6x1 : Measurement x=12mm, y=12mm, z=4mm  
Zoom Scan : 5x5x8 : Measurement x=8mm, y=8mm, z=4mm  
Power Drift-Start : 0.472 W/kg  
Power Drift-Finish: 0.487 W/kg  
Power Drift (%) : 3.177

DUT Position : Touch  
Channel : 189



1 gram SAR value : 0.512 W/kg  
10 gram SAR value : 0.362 W/kg  
Area Scan Peak SAR : 0.630 W/kg  
Zoom Scan Peak SAR : 0.820 W/kg

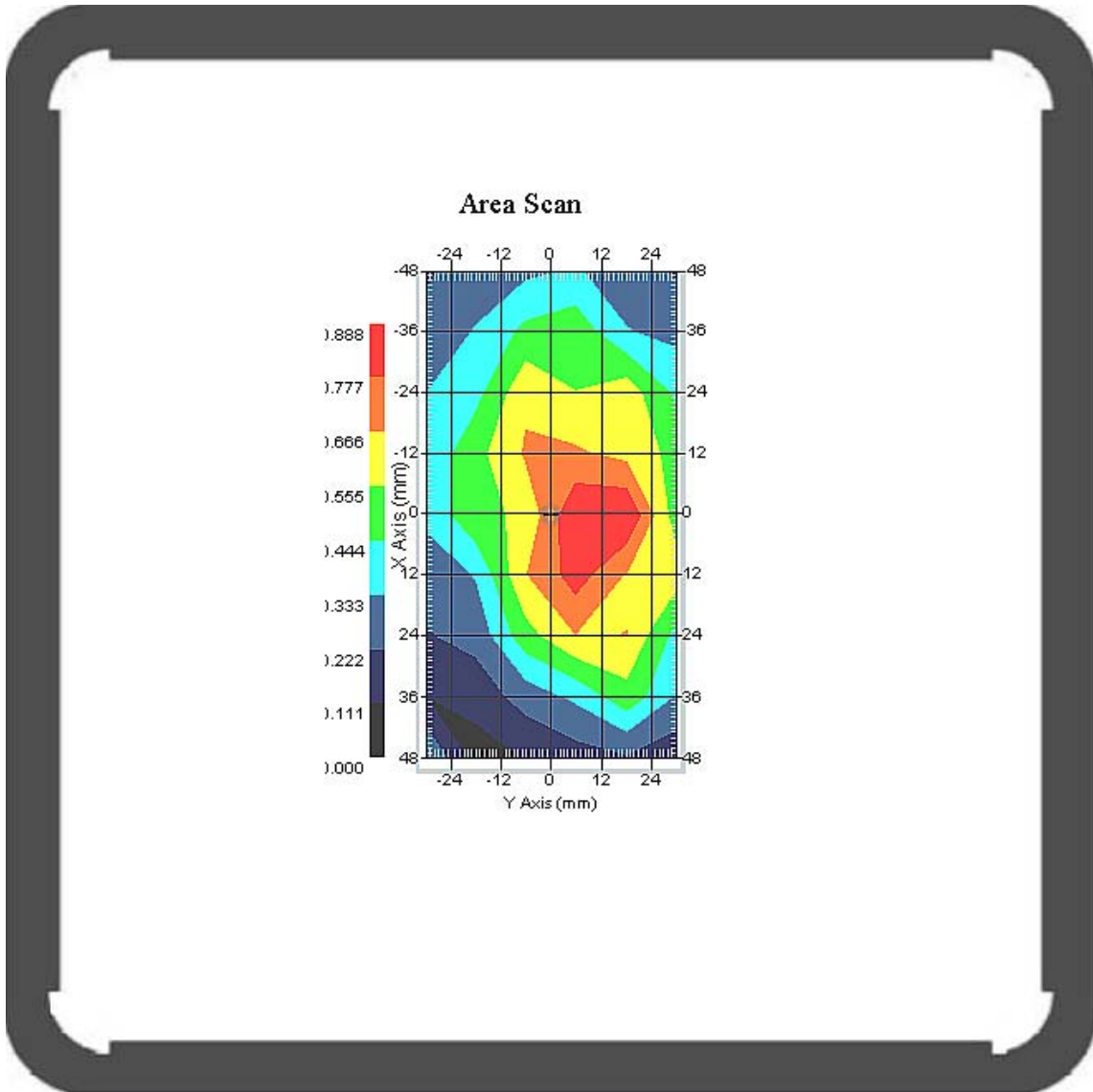
This is previous page plot (zoom in)



Measurement Data

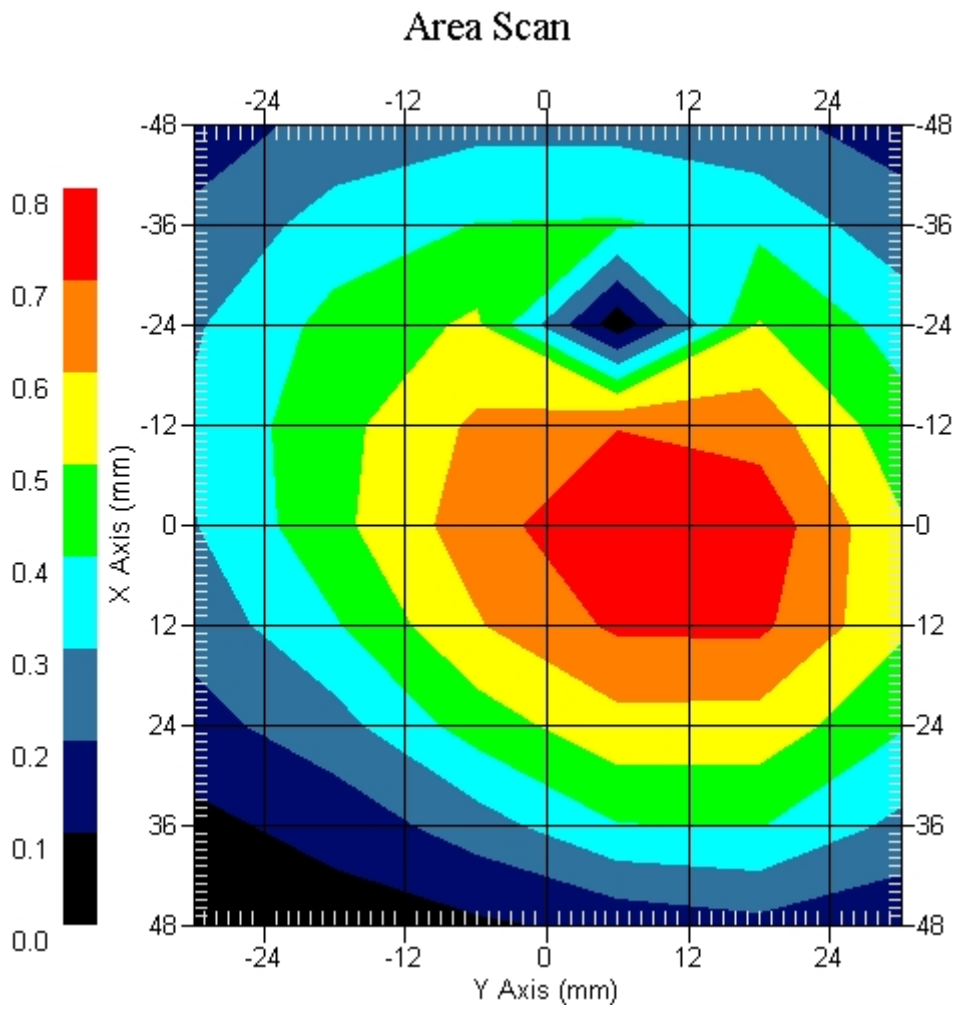
Crest Factor : 2.67  
Tissue Temp. : 21.10 °C  
Ambient Temp. : 21.80 °C  
Area Scan : 9x6x1 : Measurement x=12mm, y=12mm, z=4mm  
Zoom Scan : 5x5x8 : Measurement x=8mm, y=8mm, z=4mm  
Power Drift-Start : 0.602 W/kg  
Power Drift-Finish: 0.600 W/kg  
Power Drift (%) : -0.363

DUT Position : Touch  
Channel : 251



1 gram SAR value : 0.714 W/kg  
10 gram SAR value : 0.521 W/kg  
Area Scan Peak SAR : 0.887 W/kg  
Zoom Scan Peak SAR : 1.120 W/kg

This is previous page plot (zoom in)



## ALSAS-10U VER 2.3.6 APREL Laboratories

## SAR Test Report- GSM 850 EGPRS 3 Slot

Report Date : 10-Feb-2009  
Measurement Date : 10-Feb-2009

## Product Data

Device Name : Smart Handheld  
Type : Std Form Cell Phone  
Model : acer & glofiish  
Frequency : 850.00 MHz  
Max. Transmit Pwr : 2 W  
Drift Time : 0 min(s)  
Length : 117.6 mm  
Width : 63.5 mm  
Depth : 12.9 mm  
Antenna Type : Internal

## Phantom Data

Type : Uni-Phantom  
Size (mm) : 280 x 280 x 200  
Location : Center

## Tissue Data

Type : BODY  
Serial No. : 322-B  
Frequency : 835.00 MHz  
Last Calib. Date : 10-Feb-2009  
Temperature : 21.10 °C  
Ambient Temp. : 21.80 °C  
Humidity : 52.00 RH%  
Epsilon : 55.91 F/m  
Sigma : 0.98 S/m  
Density : 1000.00 kg/cu. m

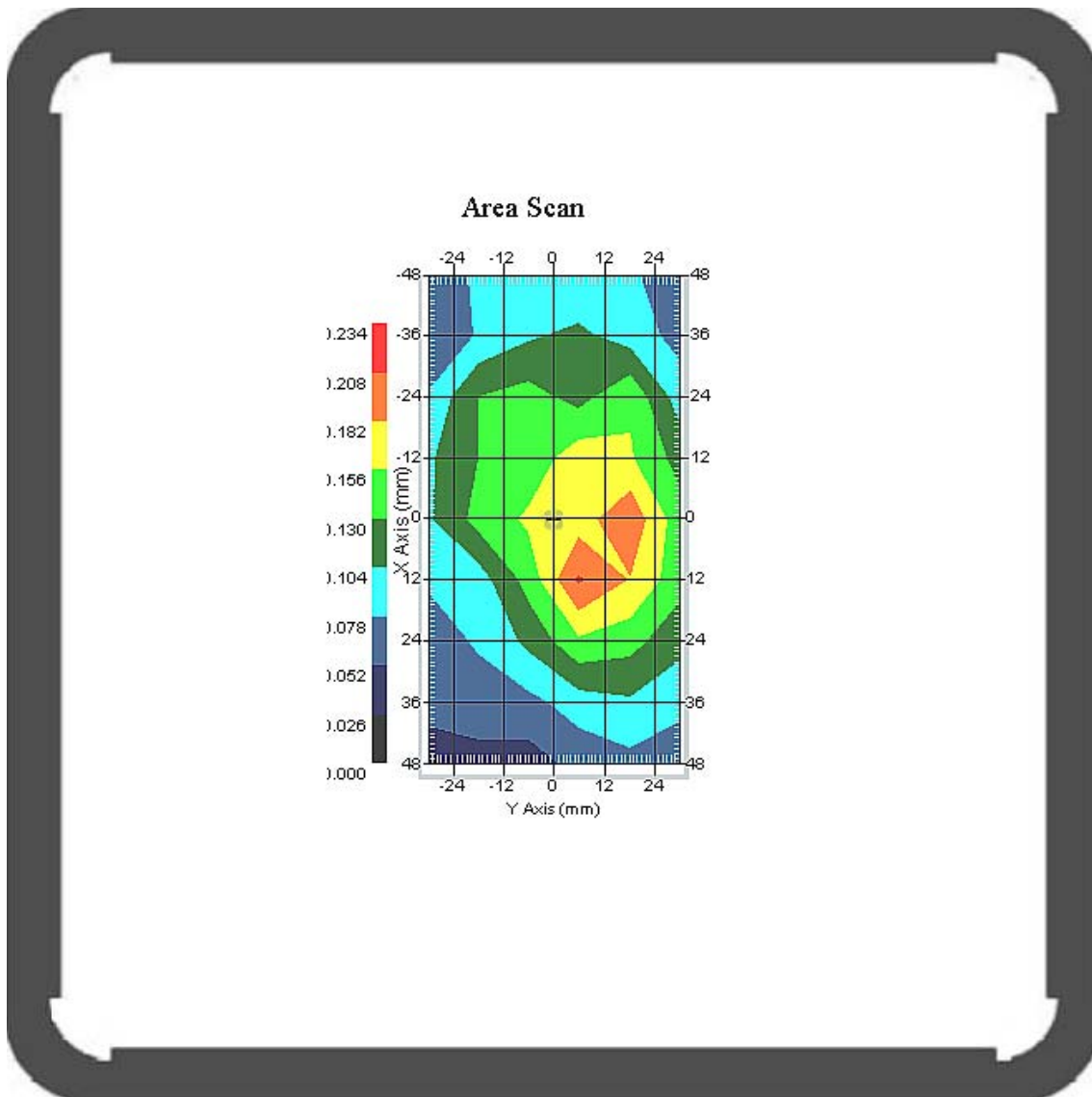
## Probe Data

Name : Probe 265  
Model : E020  
Type : E-Field Triangle  
Serial No. : 265  
Last Calib. Date : 09-May-2008  
Frequency : 835.00 MHz  
Duty Cycle Factor: 2.67  
Conversion Factor: 6.6  
Probe Sensitivity: 1.20 1.20 1.20  $\mu\text{V}/(\text{V}/\text{m})^2$   
Compression Point: 95.00 mV  
Offset : 1.56 mm

Measurement Data

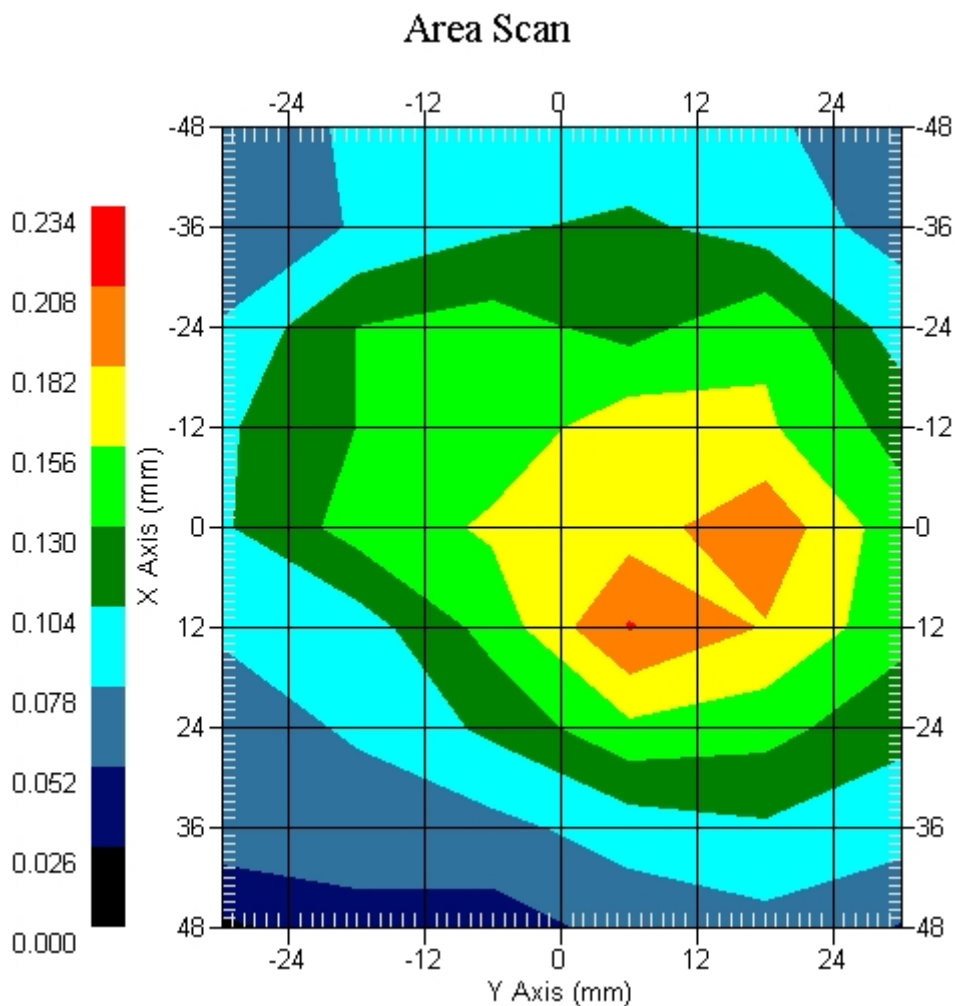
Crest Factor : 2.67  
 Tissue Temp. : 21.10 °C  
 Ambient Temp. : 21.80 °C  
 Area Scan : 9x6x1 : Measurement x=12mm, y=12mm, z=4mm  
 Zoom Scan : 5x5x8 : Measurement x=8mm, y=8mm, z=4mm  
 Power Drift-Start : 0.151 W/kg  
 Power Drift-Finish: 0.151 W/kg  
 Power Drift (%) : -0.035

DUT Position : Touch  
 Channel : 251



1 gram SAR value : 0.203 W/kg  
 10 gram SAR value : 0.135 W/kg  
 Area Scan Peak SAR : 0.210 W/kg  
 Zoom Scan Peak SAR : 0.329 W/kg

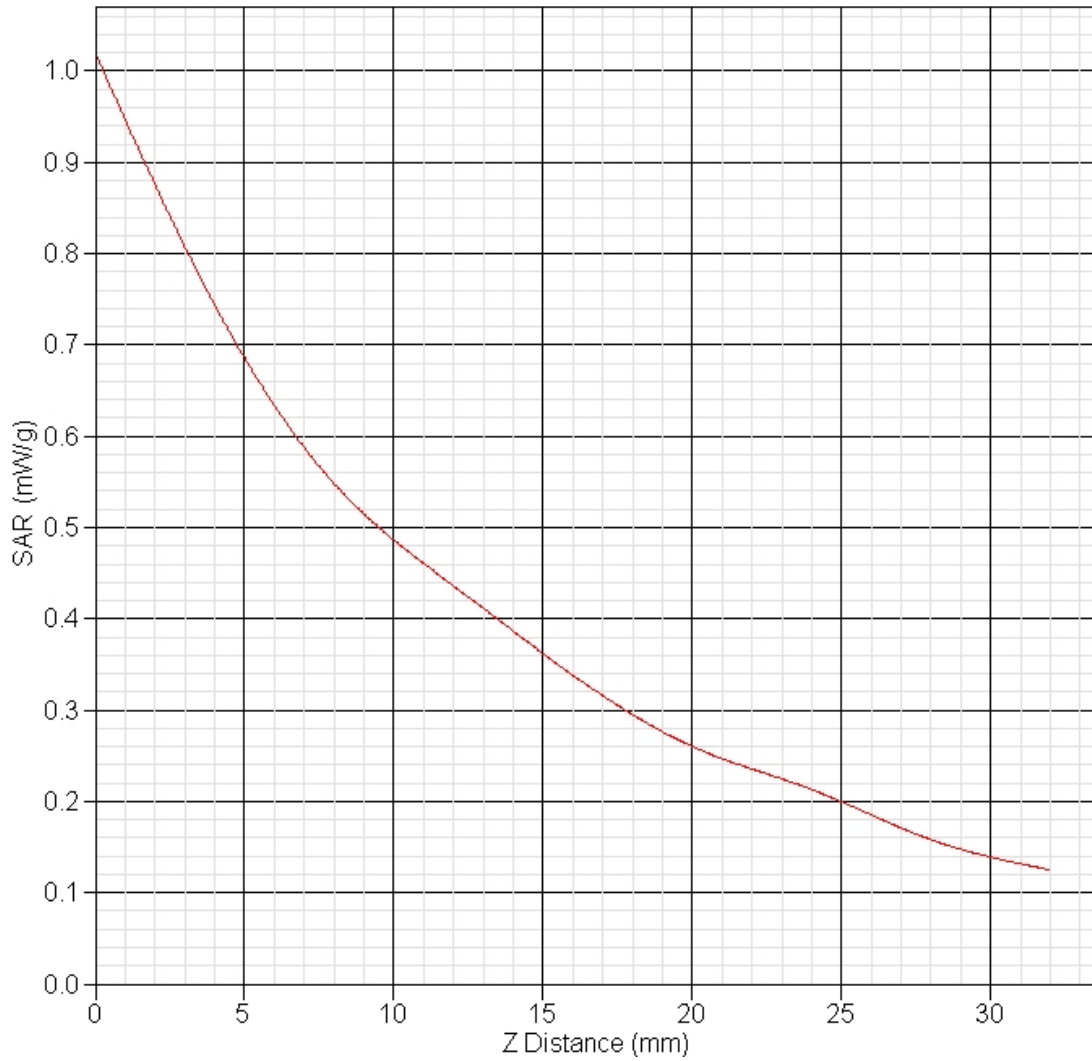
This is previous page plot (zoom in)





GSM 850 GPRS EUT Body-worn, Z-Axis plot  
Channel: 251

SAR-Z Axis  
at Hotspot x:27.97 y:-6.01



**SAR measurement Data**

ALSAS-10U VER 2.3.6 APREL Laboratories

SAR Test Report-PCS 1900

Report Date : 12-Feb-2009  
Measurement Date : 12-Feb-2009

## Product Data

Device Name : Smart Handheld  
Type : Std Form Cell Phone  
Model : acer & glofiish  
Frequency : 1900.00 MHz  
Max. Transmit Pwr : 1 W  
Drift Time : 0 min(s)  
Length : 117.6 mm  
Width : 63.5 mm  
Depth : 12.9 mm  
Antenna Type : Internal

## Phantom Data

Type : SAM-Left  
Size (mm) : 280 x 280 x 280  
Location : Left

## Tissue Data

Type : HEAD  
Serial No. : 324-H  
Frequency : 1900.00 MHz  
Last Calib. Date : 12-Feb-2009  
Temperature : 21.30 °C  
Ambient Temp. : 22.10 °C  
Humidity : 50.00 RH%  
Epsilon : 40.27 F/m  
Sigma : 1.40 S/m  
Density : 1000.00 kg/cu. m

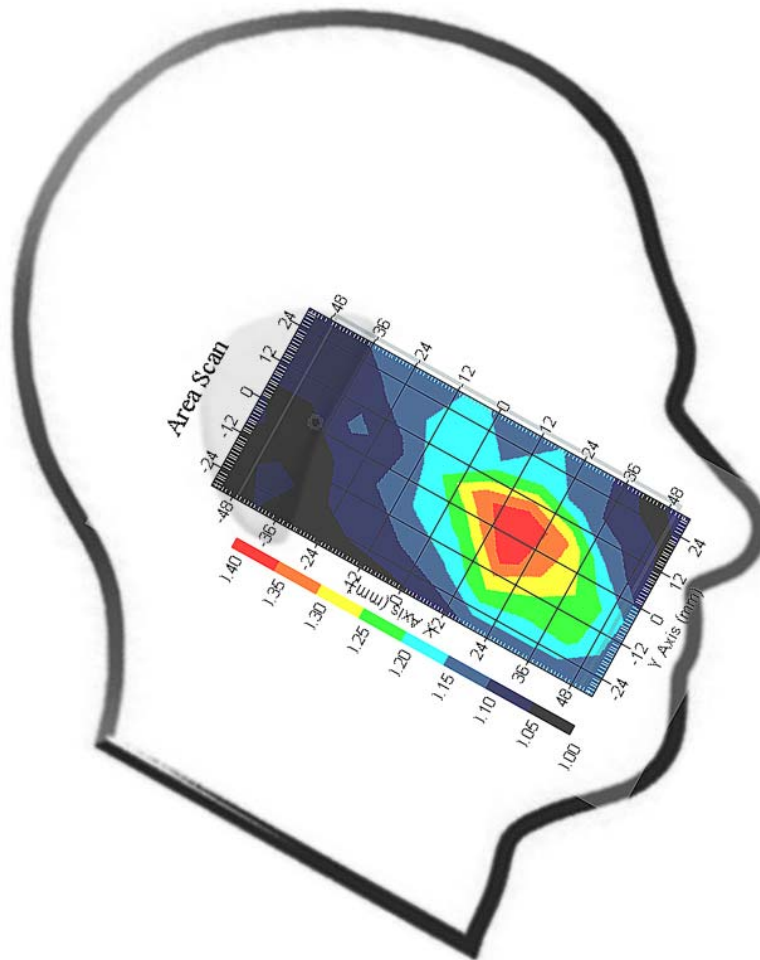
## Probe Data

Name : Probe 265  
Model : E020  
Type : E-Field Triangle  
Serial No. : 265  
Last Calib. Date : 09-May-2008  
Frequency : 1900.00 MHz  
Duty Cycle Factor: 8  
Conversion Factor: 4.51  
Probe Sensitivity: 1.20 1.20 1.20  $\mu\text{V}/(\text{V}/\text{m})^2$   
Compression Point: 95.00 mV  
Offset : 1.56 mm

Measurement Data

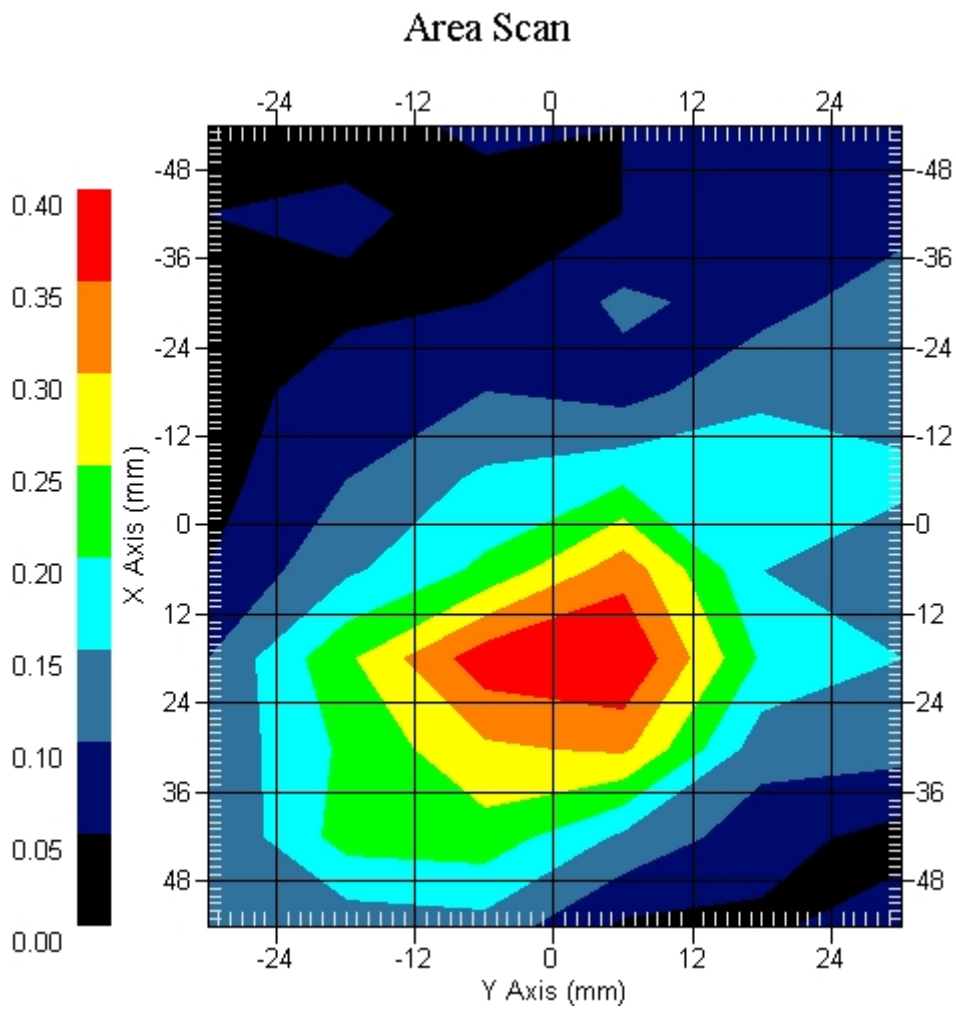
Crest Factor : 8  
Tissue Temp. : 21.30 °C  
Ambient Temp. : 22.10 °C  
Area Scan : 10x6x1 : Measurement x=12mm, y=12mm, z=4mm  
Zoom Scan : 5x5x8 : Measurement x=8mm, y=8mm, z=4mm  
Power Drift-Start : 0.056 W/kg  
Power Drift-Finish: 0.056 W/kg  
Power Drift (%) : -0.533

DUT Position : Touch  
Channel : 512



1 gram SAR value : 0.281 W/kg  
10 gram SAR value : 0.210 W/kg  
Area Scan Peak SAR : 0.400 W/kg  
Zoom Scan Peak SAR : 0.590 W/kg

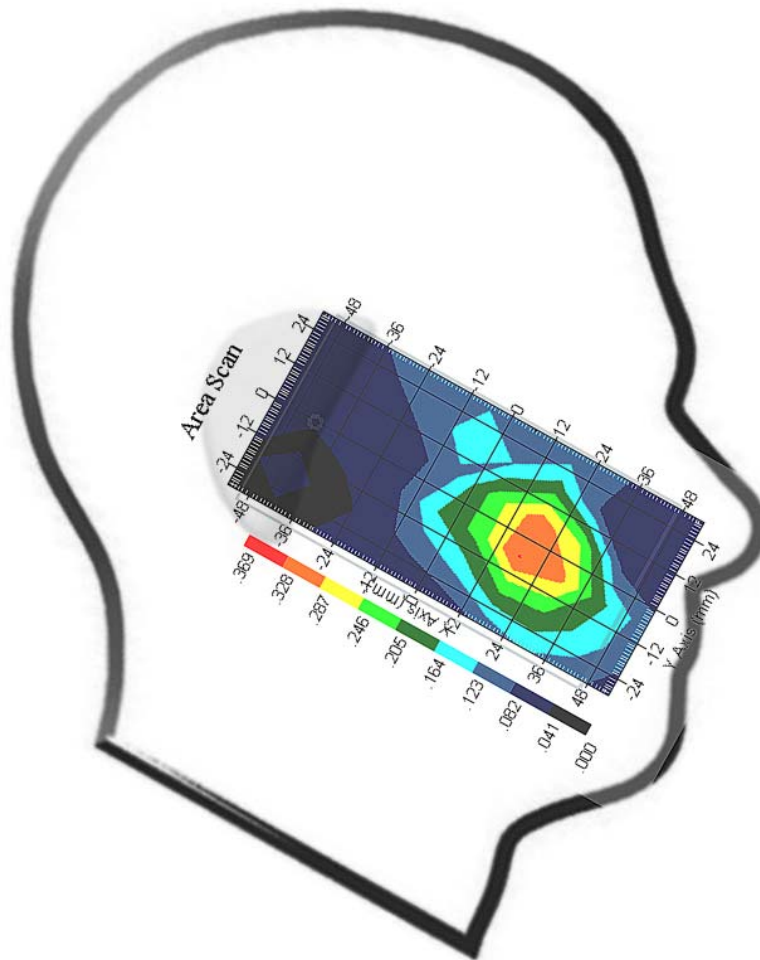
This is previous page plot (zoom in)



Measurement Data

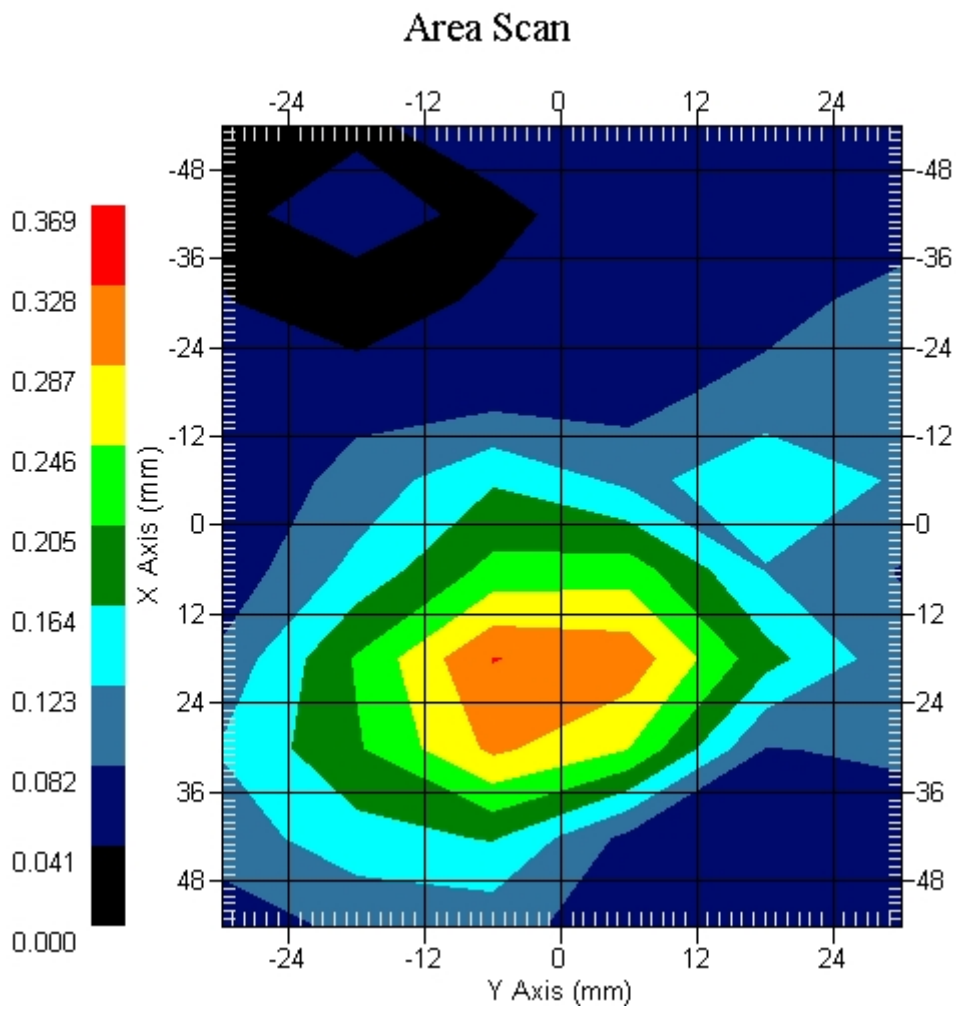
Crest Factor : 8  
Tissue Temp. : 21.30 °C  
Ambient Temp. : 22.10 °C  
Area Scan : 10x6x1 : Measurement x=12mm, y=12mm, z=4mm  
Zoom Scan : 5x5x8 : Measurement x=8mm, y=8mm, z=4mm  
Power Drift-Start : 0.043 W/kg  
Power Drift-Finish: 0.043 W/kg  
Power Drift (%) : 0.785

DUT Position : Touch  
Channel : 661



1 gram SAR value : 0.214 W/kg  
10 gram SAR value : 0.140 W/kg  
Area Scan Peak SAR : 0.329 W/kg  
Zoom Scan Peak SAR : 0.530 W/kg

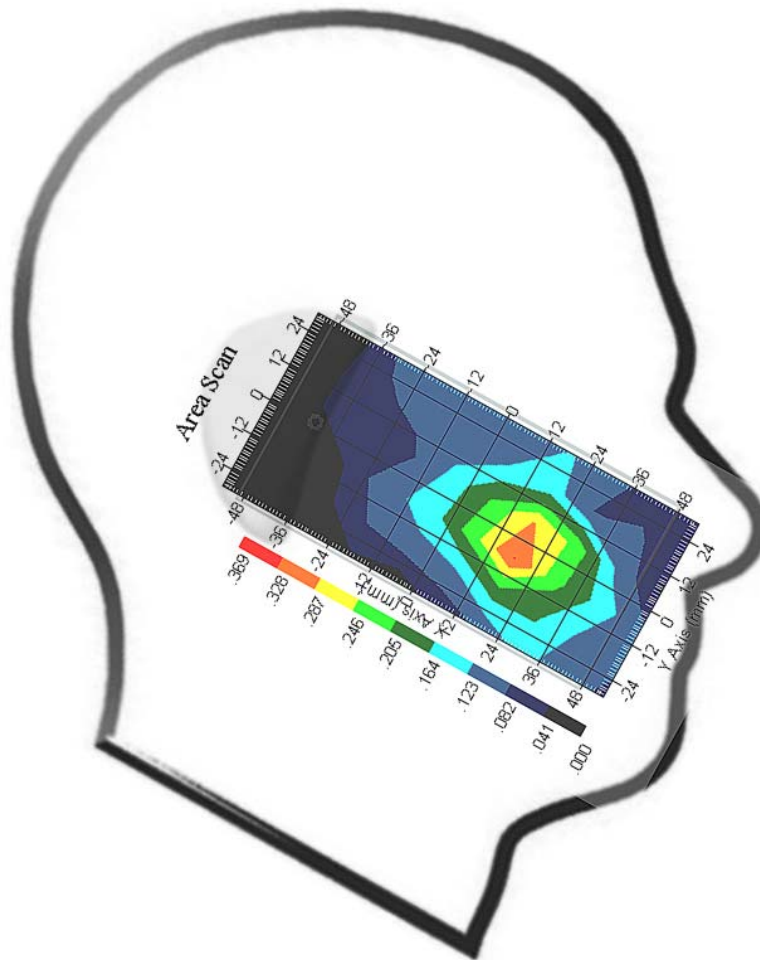
This is previous page plot (zoom in)



Measurement Data

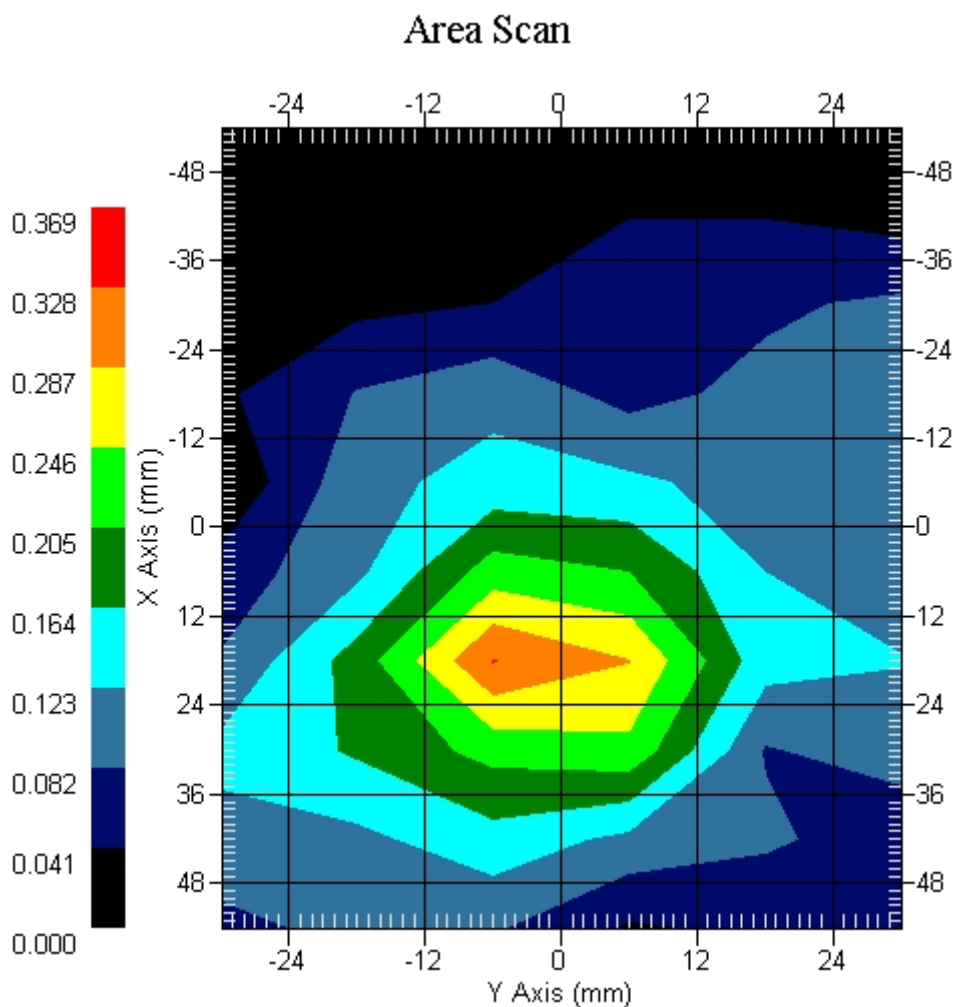
Crest Factor : 8  
Tissue Temp. : 21.30 °C  
Ambient Temp. : 22.10 °C  
Area Scan : 10x6x1 : Measurement x=12mm, y=12mm, z=4mm  
Zoom Scan : 5x5x8 : Measurement x=8mm, y=8mm, z=4mm  
Power Drift-Start : 0.069 W/kg  
Power Drift-Finish: 0.069 W/kg  
Power Drift (%) : -0.129

DUT Position : Touch  
Channel : 810



1 gram SAR value : 0.227 W/kg  
10 gram SAR value : 0.139 W/kg  
Area Scan Peak SAR : 0.329 W/kg  
Zoom Scan Peak SAR : 0.380 W/kg

This is previous page plot (zoom in)

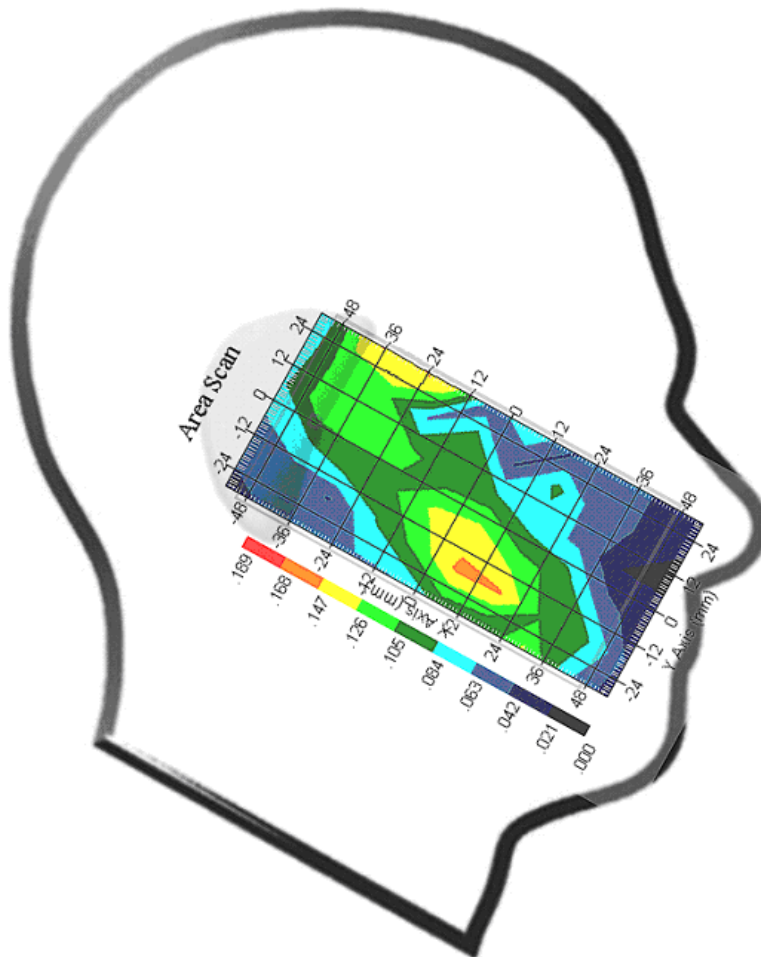




Measurement Data

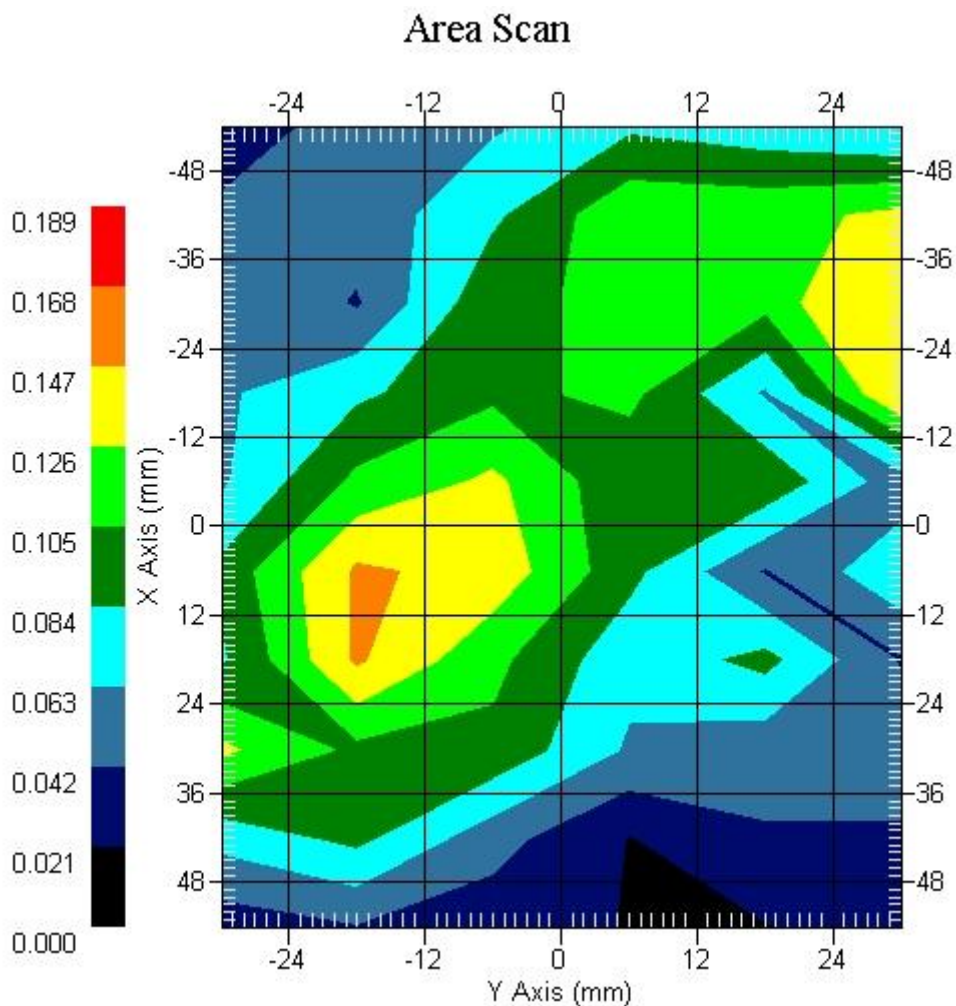
Crest Factor : 8  
Tissue Temp. : 21.30 °C  
Ambient Temp. : 22.10 °C  
Area Scan : 10x6x1 : Measurement x=12mm, y=12mm, z=4mm  
Zoom Scan : 5x5x8 : Measurement x=8mm, y=8mm, z=4mm  
Power Drift-Start : 0.108 W/kg  
Power Drift-Finish: 0.105 W/kg  
Power Drift (%) : -3.092

DUT Position : 15° Tilt  
Channel : 512



1 gram SAR value : 0.133 W/kg  
10 gram SAR value : 0.102 W/kg  
Area Scan Peak SAR : 0.160 W/kg  
Zoom Scan Peak SAR : 0.281 W/kg

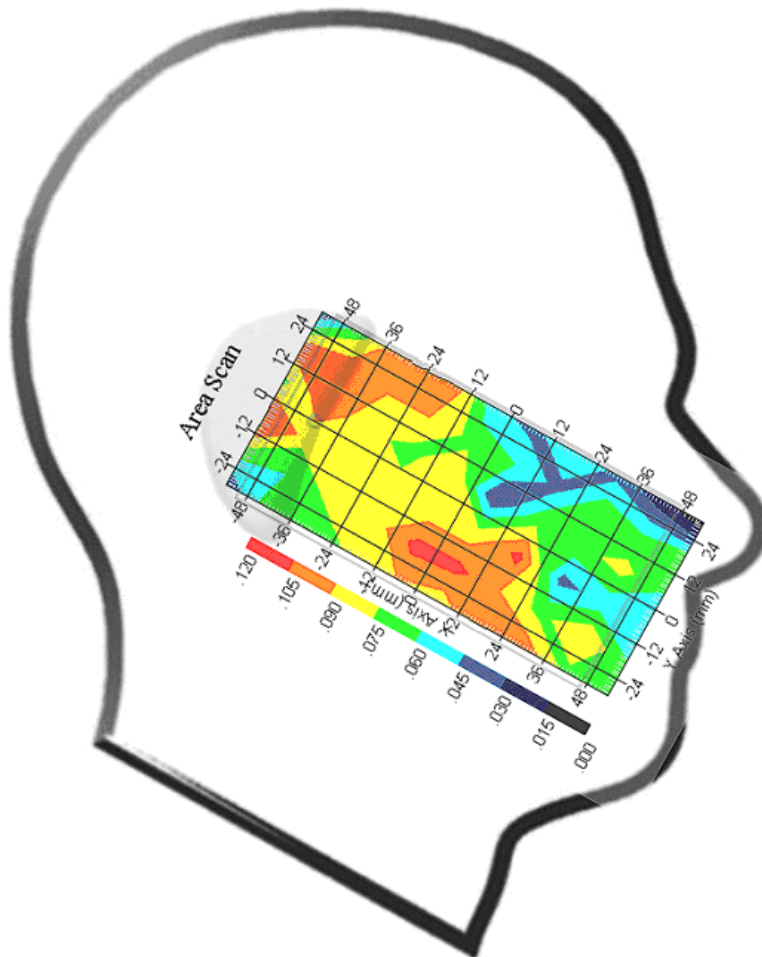
This is previous page plot (zoom in)



Measurement Data

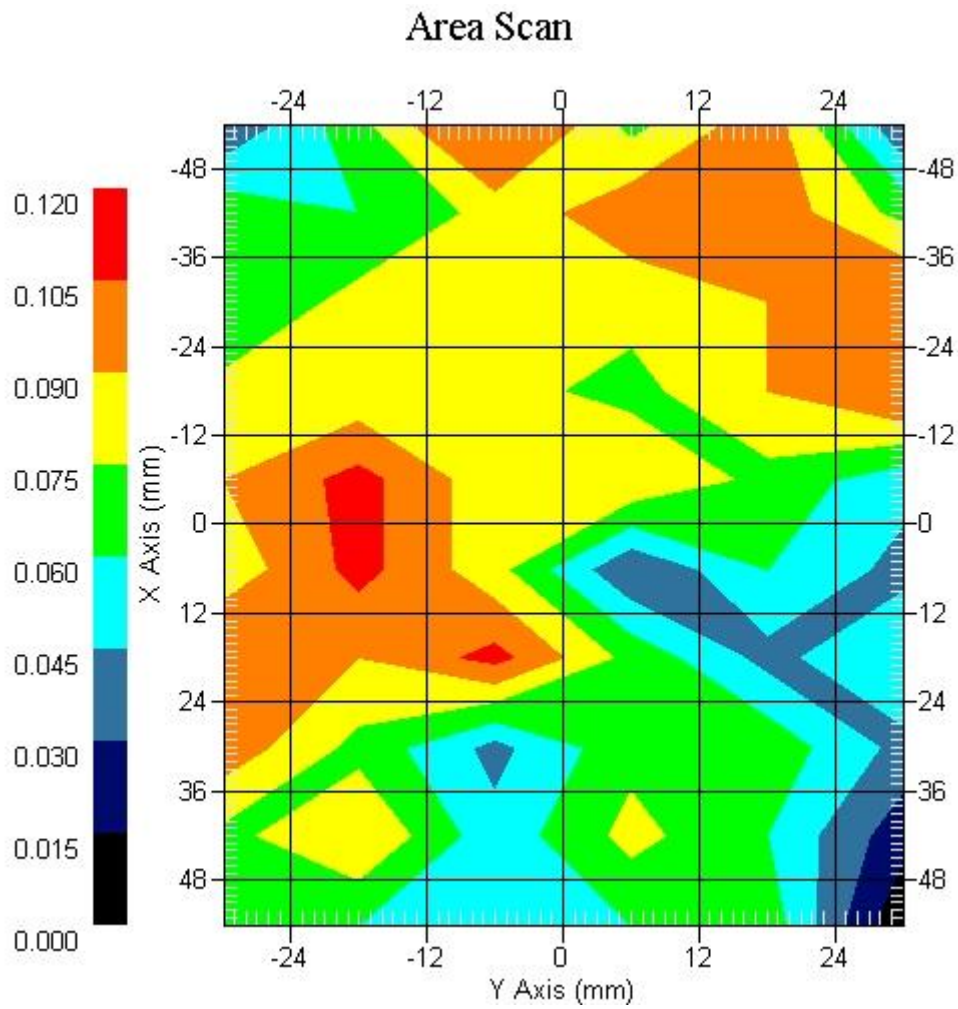
Crest Factor : 8  
Tissue Temp. : 21.30 °C  
Ambient Temp. : 22.10 °C  
Area Scan : 10x6x1 : Measurement x=12mm, y=12mm, z=4mm  
Zoom Scan : 5x5x8 : Measurement x=8mm, y=8mm, z=4mm  
Power Drift-Start : 0.089 W/kg  
Power Drift-Finish: 0.085 W/kg  
Power Drift (%) : -4.494

DUT Position : 15° Tilt  
Channel : 661



1 gram SAR value : 0.084 W/kg  
10 gram SAR value : 0.073 W/kg  
Area Scan Peak SAR : 0.120 W/kg  
Zoom Scan Peak SAR : 0.141 W/kg

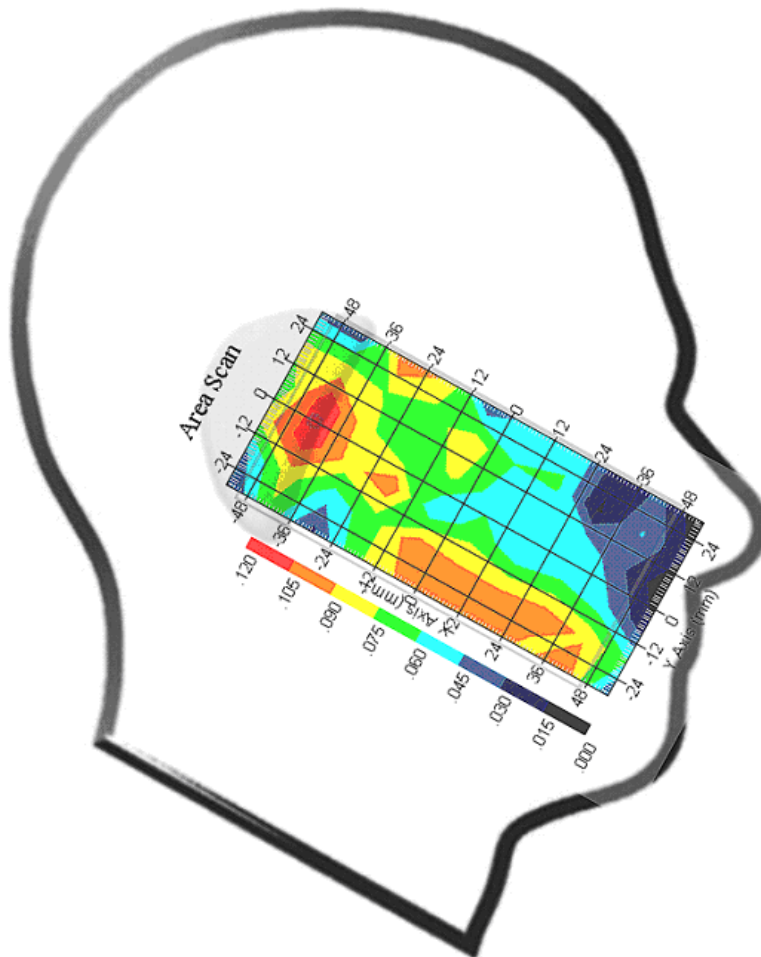
This is previous page plot (zoom in)



Measurement Data

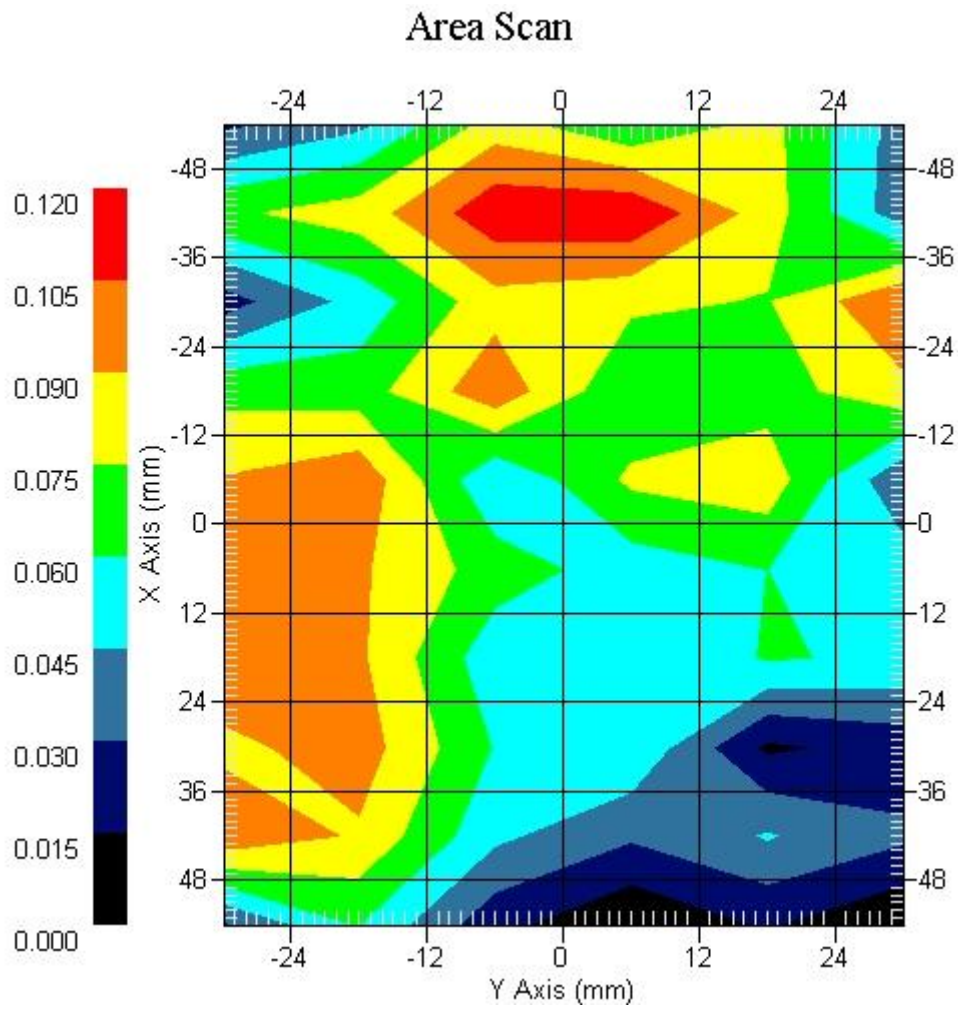
Crest Factor : 8  
Tissue Temp. : 21.30 °C  
Ambient Temp. : 22.10 °C  
Area Scan : 10x6x1 : Measurement x=12mm, y=12mm, z=4mm  
Zoom Scan : 5x5x8 : Measurement x=8mm, y=8mm, z=4mm  
Power Drift-Start : 0.106 W/kg  
Power Drift-Finish: 0.104 W/kg  
Power Drift (%) : -1.886

DUT Position : 15° Tilt  
Channel : 810



1 gram SAR value : 0.087 W/kg  
10 gram SAR value : 0.077 W/kg  
Area Scan Peak SAR : 0.118 W/kg  
Zoom Scan Peak SAR : 0.132 W/kg

This is previous page plot (zoom in)



## ALSAS-10U VER 2.3.6 APREL Laboratories

## SAR Test Report-PCS 1900

Report Date : 12-Feb-2009  
Measurement Date : 12-Feb-2009

## Product Data

Device Name : Smart Handheld  
Type : Std Form Cell Phone  
Model : acer & glofiish  
Frequency : 1900.00 MHz  
Max. Transmit Pwr : 1 W  
Drift Time : 0 min(s)  
Length : 117.6 mm  
Width : 63.5 mm  
Depth : 12.9 mm  
Antenna Type : Internal

## Phantom Data

Type : SAM-Right  
Size (mm) : 280 x 280 x 280  
Location : Right

## Tissue Data

Type : HEAD  
Serial No. : 324-H  
Frequency : 1900.00 MHz  
Last Calib. Date : 12-Feb-2009  
Temperature : 21.30 °C  
Ambient Temp. : 22.10 °C  
Humidity : 50.00 RH%  
Epsilon : 40.28 F/m  
Sigma : 1.40 S/m  
Density : 1000.00 kg/cu. m

## Probe Data

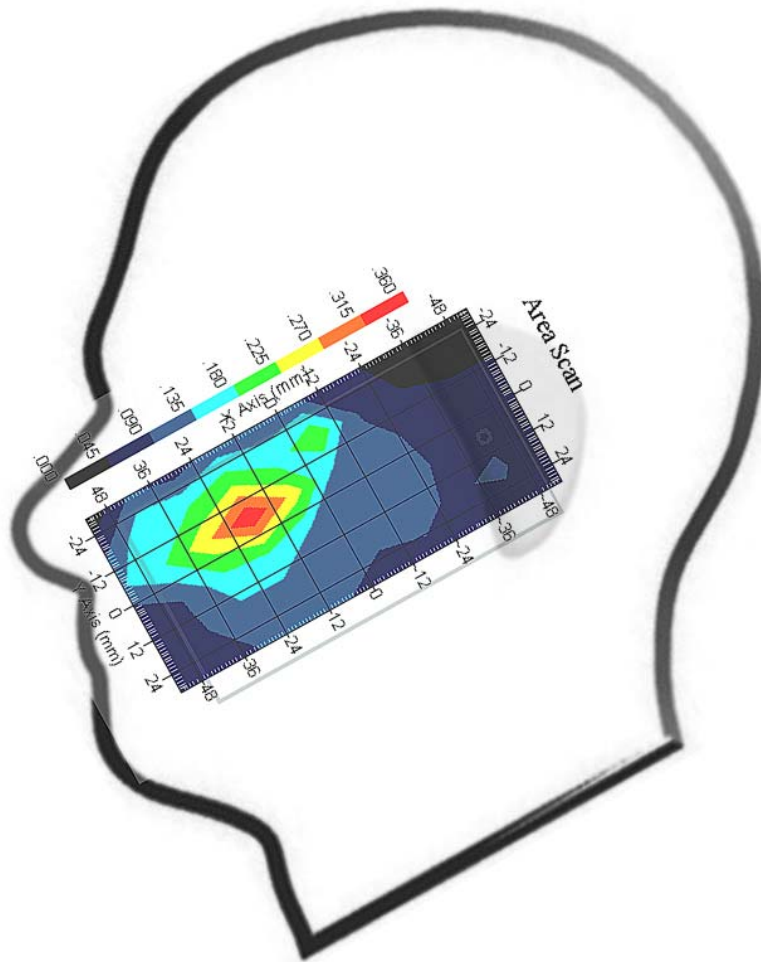
Name : Probe 265  
Model : E020  
Type : E-Field Triangle  
Serial No. : 265  
Last Calib. Date : 09-May-2008  
Frequency : 1900.00 MHz  
Duty Cycle Factor: 8  
Conversion Factor: 4.51  
Probe Sensitivity: 1.20 1.20 1.20  $\mu\text{V}/(\text{V}/\text{m})^2$   
Compression Point: 95.00 mV  
Offset : 1.56 mm



Measurement Data

Crest Factor : 8  
Tissue Temp. : 21.30 °C  
Ambient Temp. : 22.10 °C  
Area Scan : 10x6x1 : Measurement x=12mm, y=12mm, z=4mm  
Zoom Scan : 5x5x8 : Measurement x=8mm, y=8mm, z=4mm  
Power Drift-Start : 0.091 W/kg  
Power Drift-Finish: 0.089 W/kg  
Power Drift (%) : -2.197

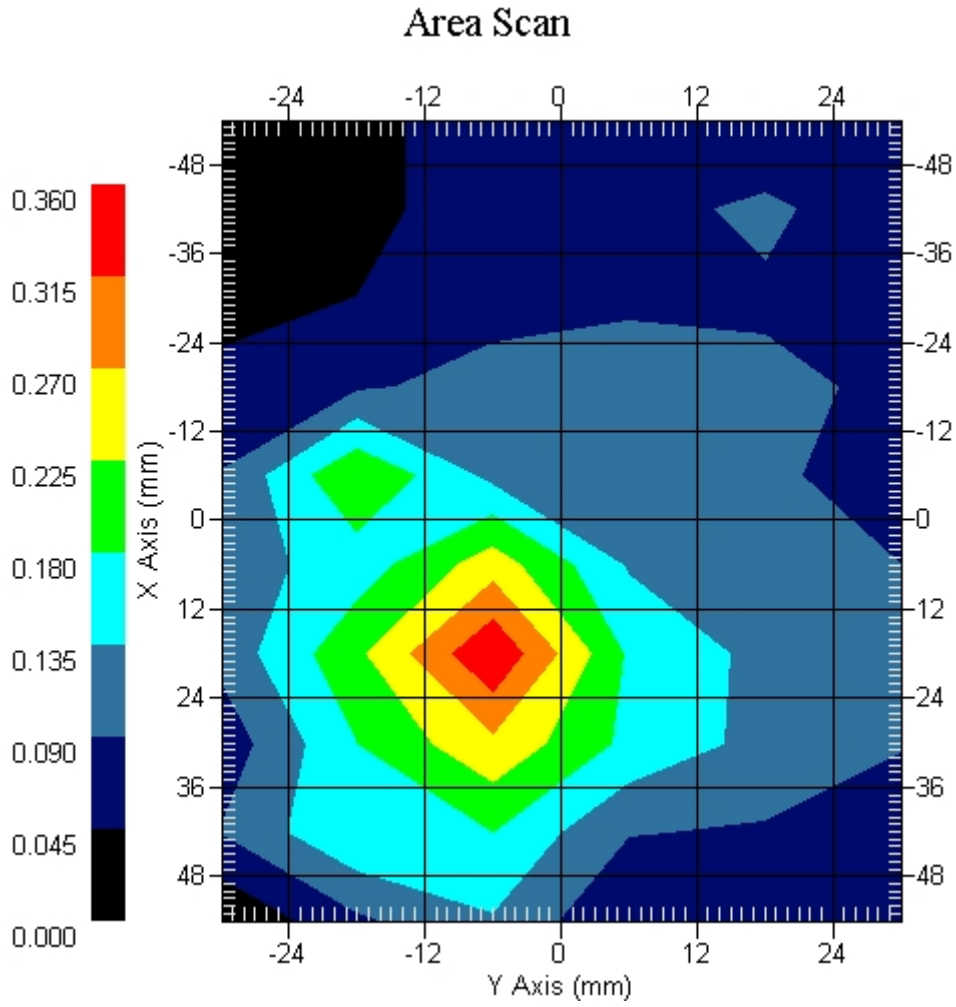
DUT Position : Touch  
Channel : 512



1 gram SAR value : 0.242 W/kg  
10 gram SAR value : 0.151 W/kg  
Area Scan Peak SAR : 0.356 W/kg  
Zoom Scan Peak SAR : 0.120 W/kg



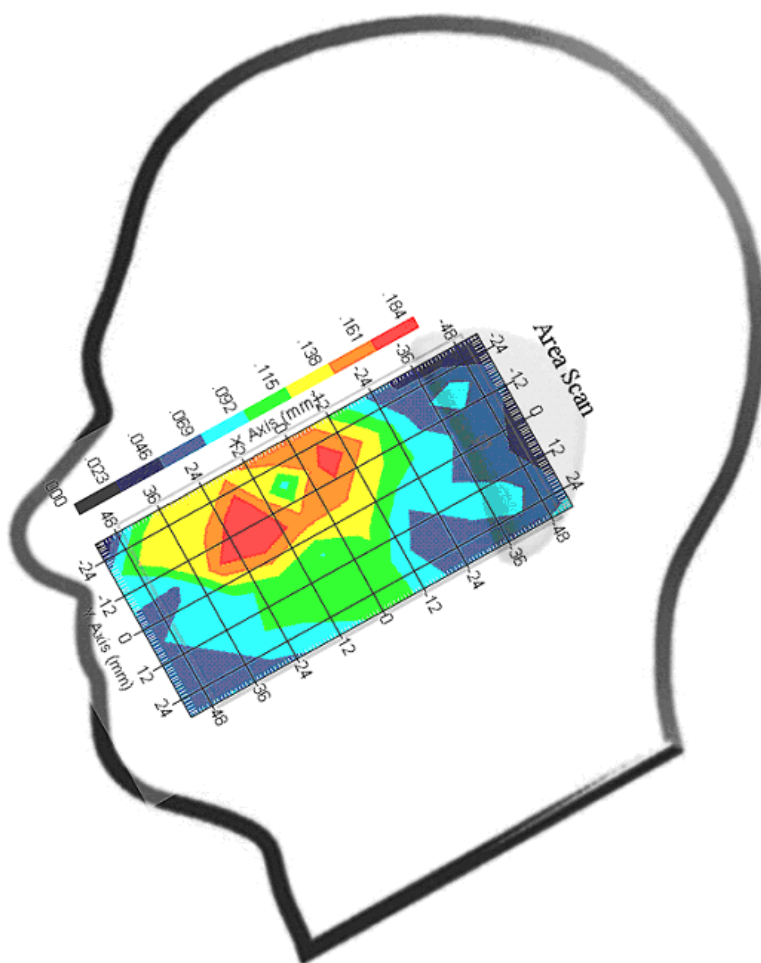
This is previous page plot (zoom in)



Measurement Data

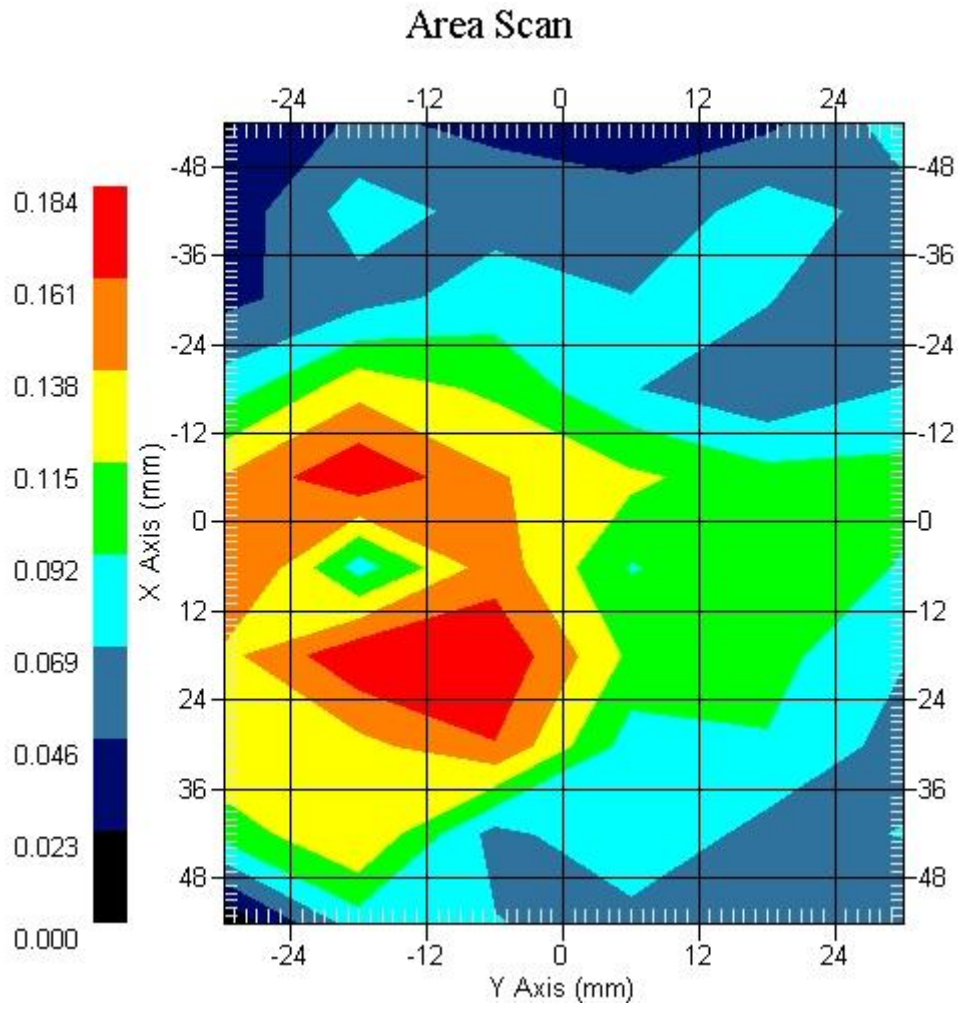
Crest Factor : 8  
 Tissue Temp. : 21.30 °C  
 Ambient Temp. : 22.10 °C  
 Area Scan : 10x6x1 : Measurement x=12mm, y=12mm, z=4mm  
 Zoom Scan : 5x5x8 : Measurement x=8mm, y=8mm, z=4mm  
 Power Drift-Start : 0.044 W/kg  
 Power Drift-Finish: 0.044 W/kg  
 Power Drift (%) : 0.175

DUT Position : Touch  
 Channel : 661



1 gram SAR value : 0.112 W/kg  
 10 gram SAR value : 0.091 W/kg  
 Area Scan Peak SAR : 0.180 W/kg  
 Zoom Scan Peak SAR : 0.230 W/kg

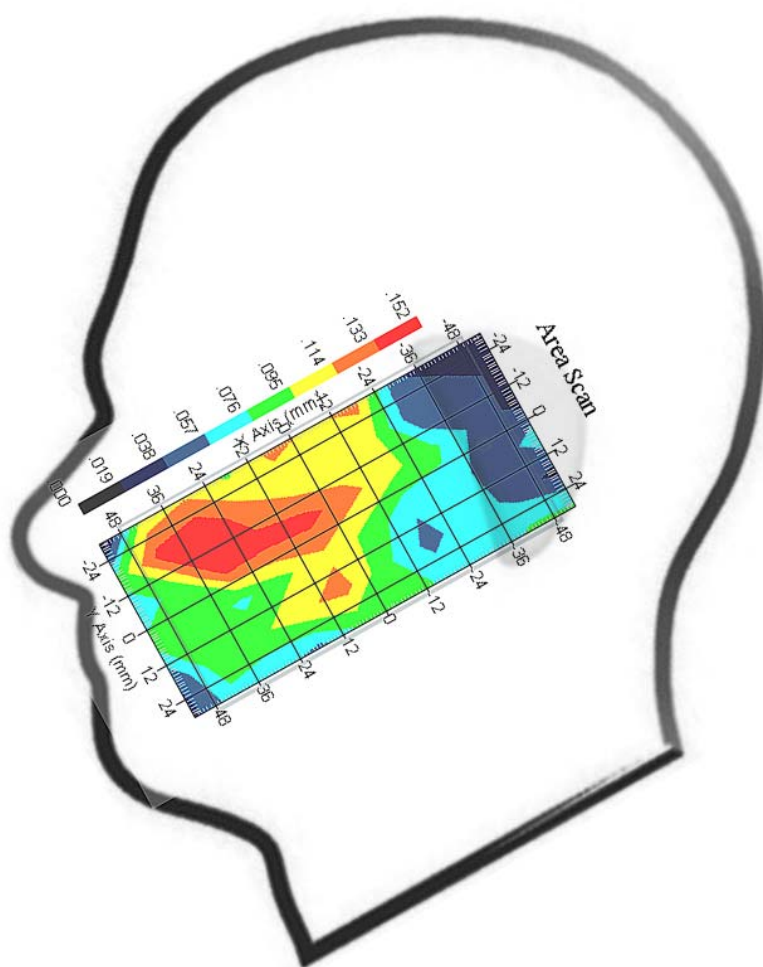
This is previous page plot (zoom in)



Measurement Data

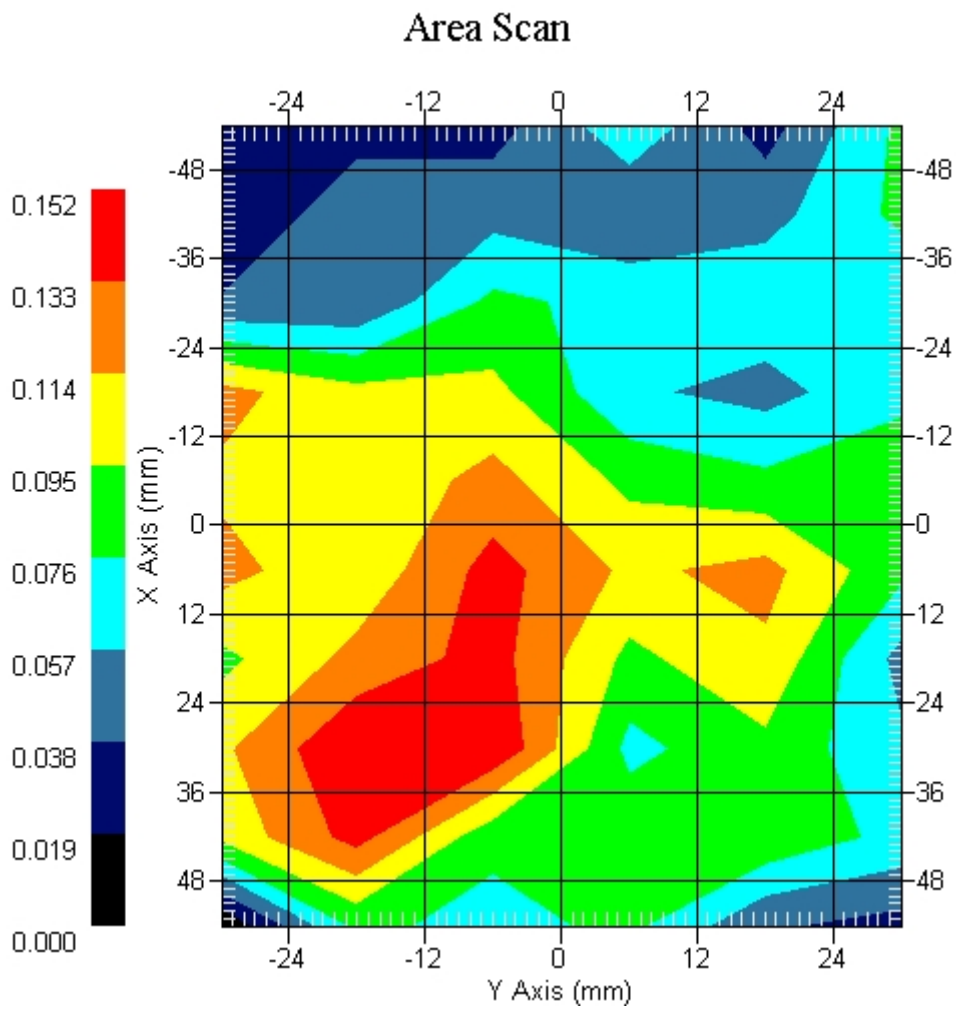
Crest Factor : 8  
 Tissue Temp. : 21.30 °C  
 Ambient Temp. : 22.10 °C  
 Area Scan : 10x6x1 : Measurement x=12mm, y=12mm, z=4mm  
 Zoom Scan : 5x5x8 : Measurement x=8mm, y=8mm, z=4mm  
 Power Drift-Start : 0.070 W/kg  
 Power Drift-Finish: 0.067 W/kg  
 Power Drift (%) : -3.633

DUT Position : Touch  
 Channel : 810



1 gram SAR value : 0.108 W/kg  
 10 gram SAR value : 0.076 W/kg  
 Area Scan Peak SAR : 0.150 W/kg  
 Zoom Scan Peak SAR : 0.212 W/kg

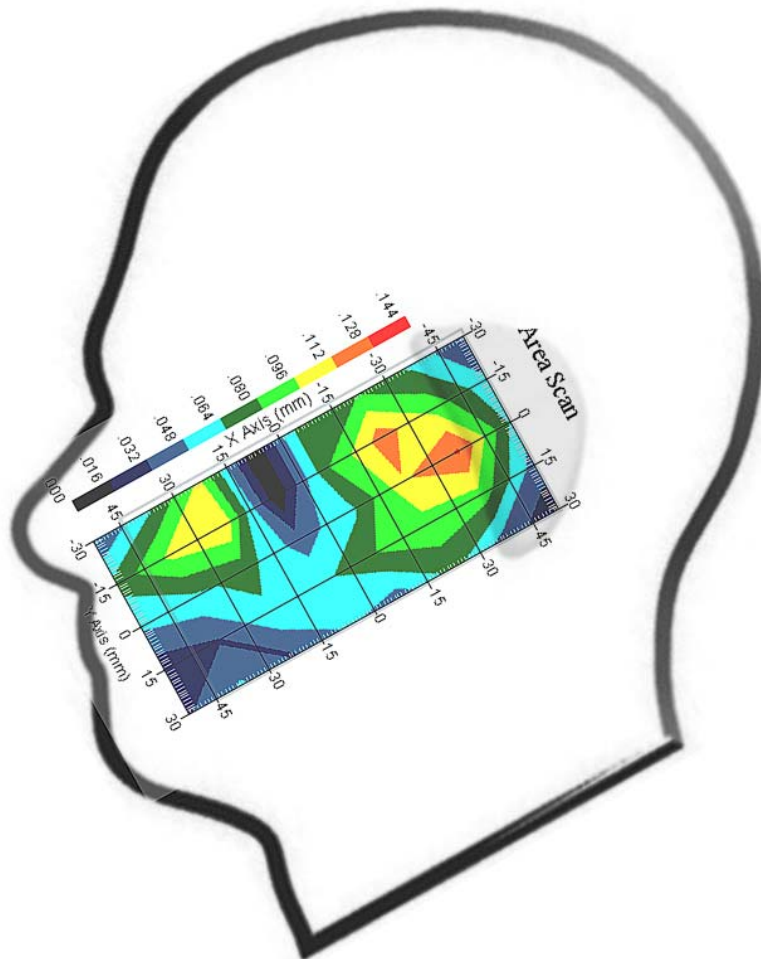
This is previous page plot (zoom in)



Measurement Data

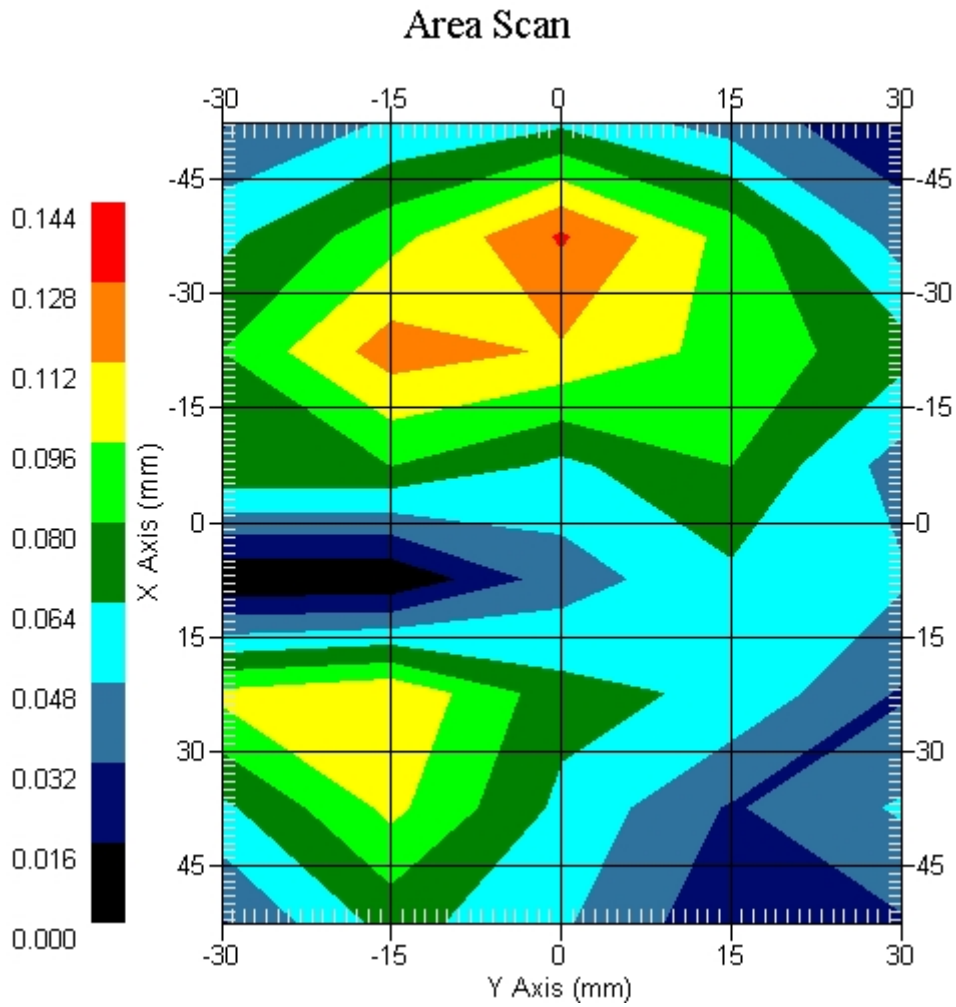
Crest Factor : 8  
Tissue Temp. : 21.30 °C  
Ambient Temp. : 22.10 °C  
Area Scan : 8x5x1 : Measurement x=15mm, y=15mm, z=4mm  
Zoom Scan : 5x5x8 : Measurement x=8mm, y=8mm, z=4mm  
Power Drift-Start : 0.102 W/kg  
Power Drift-Finish: 0.102 W/kg  
Power Drift (%) : -0.616

DUT Position : 15° Tilt  
Channel : 512



1 gram SAR value : 0.067 W/kg  
10 gram SAR value : 0.048 W/kg  
Area Scan Peak SAR : 0.130 W/kg  
Zoom Scan Peak SAR : 0.125 W/kg

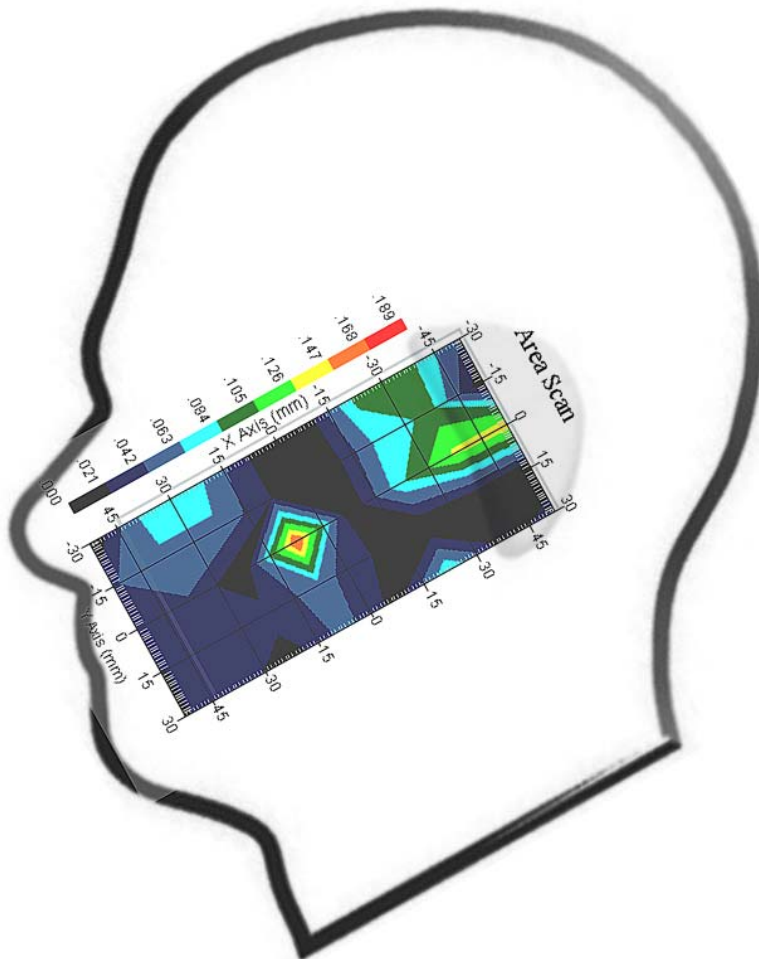
This is previous page plot (zoom in)



Measurement Data

Crest Factor : 8  
Tissue Temp. : 21.30 °C  
Ambient Temp. : 22.10 °C  
Area Scan : 8x5x1 : Measurement x=15mm, y=15mm, z=4mm  
Zoom Scan : 5x5x8 : Measurement x=8mm, y=8mm, z=4mm  
Power Drift-Start : 0.107 W/kg  
Power Drift-Finish: 0.107 W/kg  
Power Drift (%) : -0.354

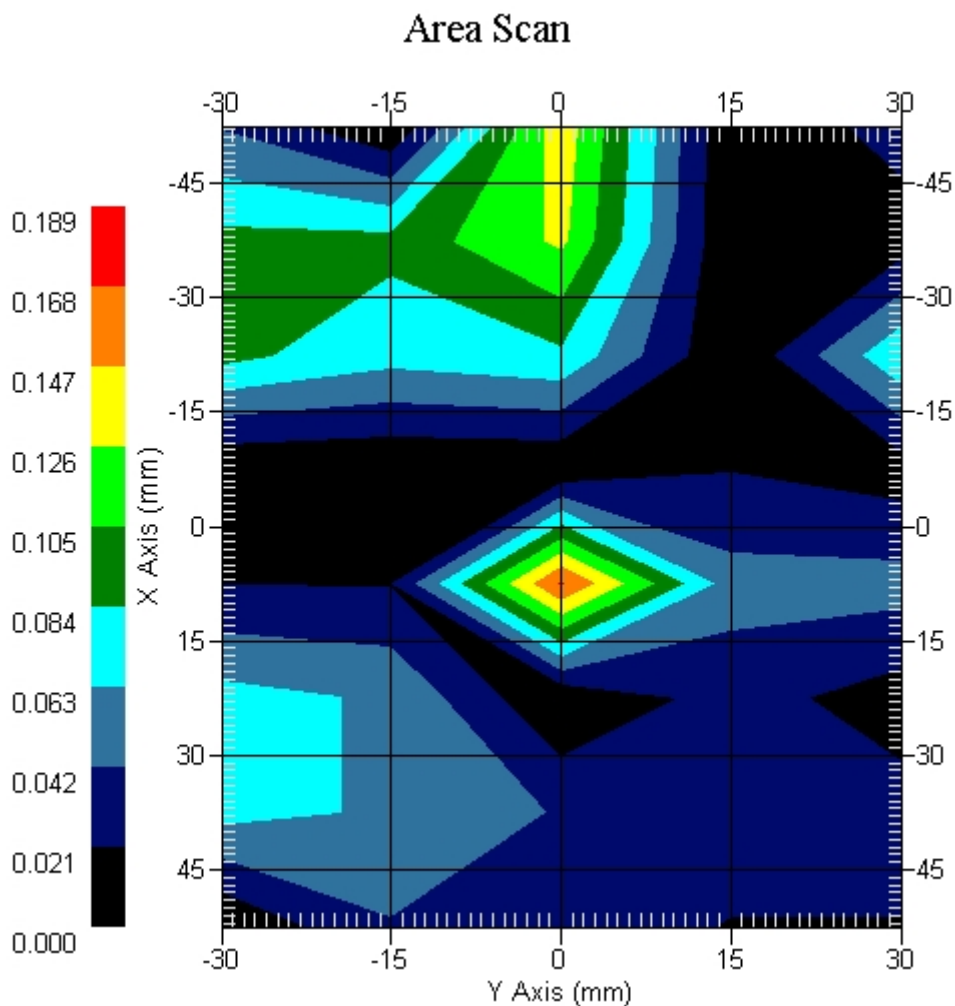
DUT Position : 15° Tilt  
Channel : 661



1 gram SAR value : 0.095 W/kg  
10 gram SAR value : 0.085 W/kg  
Area Scan Peak SAR : 0.170 W/kg  
Zoom Scan Peak SAR : 0.193 W/kg



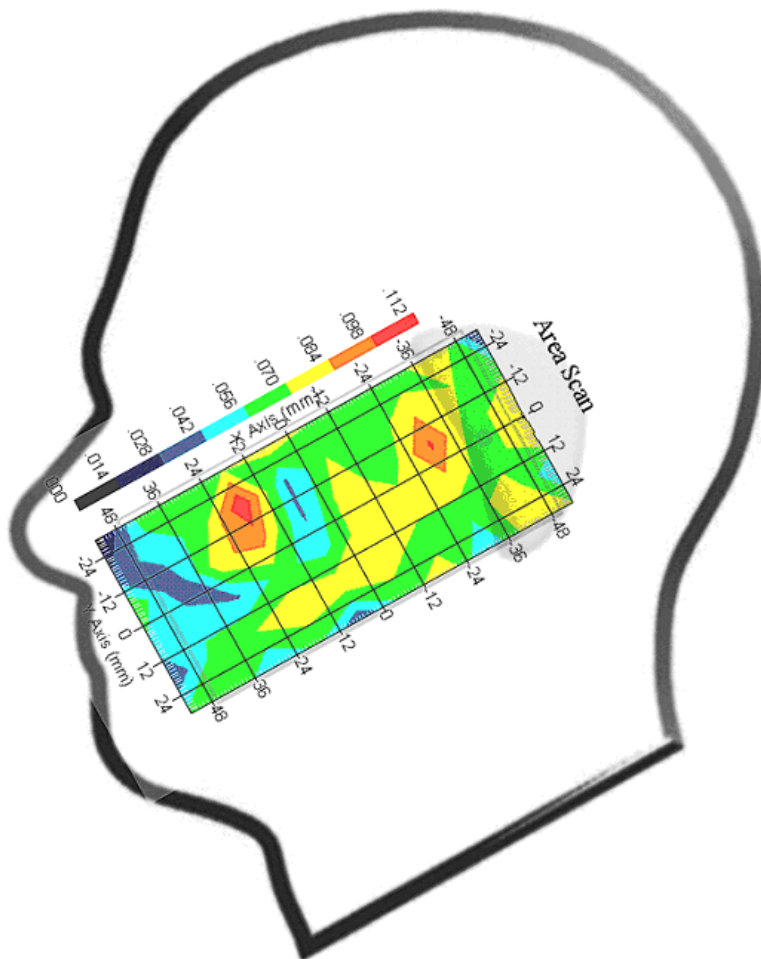
This is previous page plot (zoom in)



Measurement Data

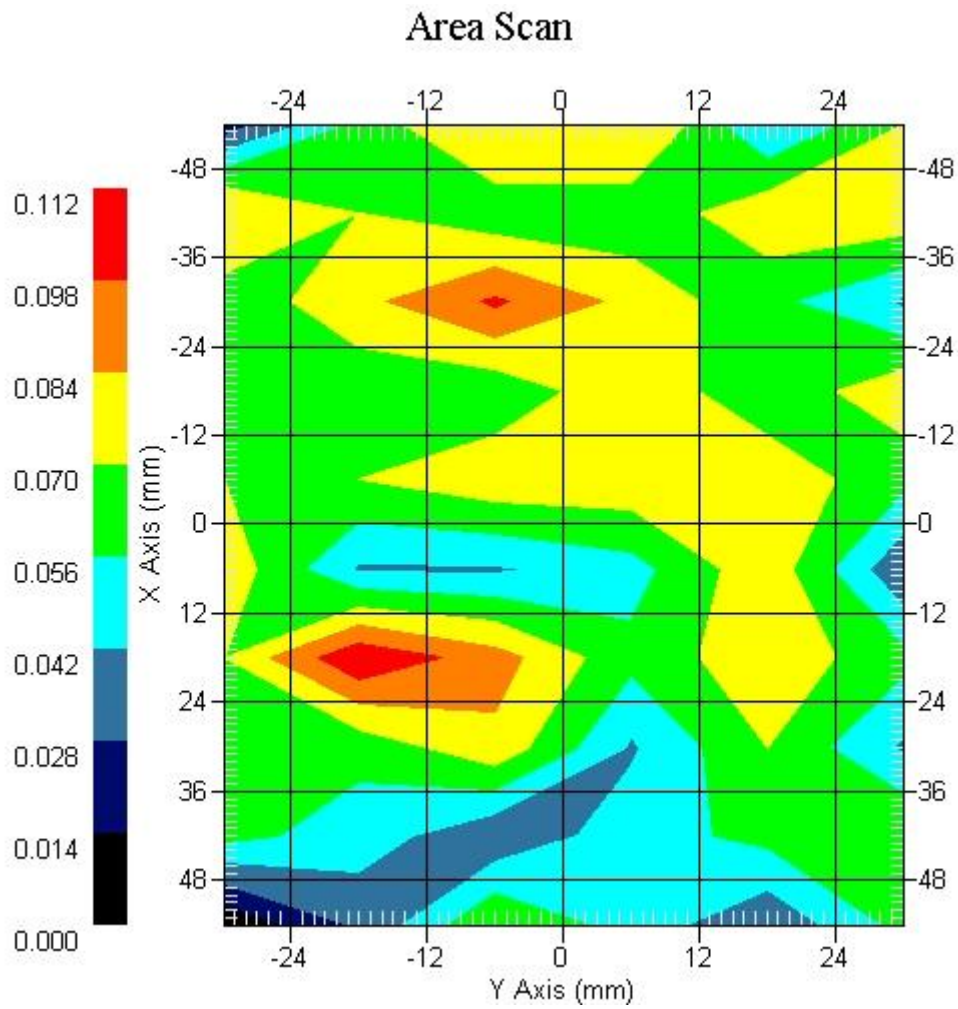
Crest Factor : 8  
Tissue Temp. : 21.30 °C  
Ambient Temp. : 22.10 °C  
Area Scan : 10x6x1 : Measurement x=12mm, y=12mm, z=4mm  
Zoom Scan : 5x5x8 : Measurement x=8mm, y=8mm, z=4mm  
Power Drift-Start : 0.060 W/kg  
Power Drift-Finish: 0.060 W/kg  
Power Drift (%) : 0.421

DUT Position : 15° Tilt  
Channel : 810



1 gram SAR value : 0.081 W/kg  
10 gram SAR value : 0.062 W/kg  
Area Scan Peak SAR : 0.110 W/kg  
Zoom Scan Peak SAR : 0.172 W/kg

This is previous page plot (zoom in)



ALSAS-10U VER 2.3.6 APREL Laboratories  
SAR Test Report-PCS 1900Report Date : 24-Feb-2009  
Measurement Date : 24-Feb-2009

## Product Data

Device Name : Acer  
Type : Std Form Cell Phone  
Model : acer & glofiish  
Frequency : 1900.00 MHz  
Max. Transmit Pwr : 1 W  
Drift Time : 0 min(s)  
Length : 117.6 mm  
Width : 63.5 mm  
Depth : 12.9 mm  
Antenna Type : Internal

## Phantom Data

Type : Uni-Phantom  
Size (mm) : 280 x 280 x 200  
Location : Center

## Tissue Data

Type : BODY  
Serial No. : 324-B  
Frequency : 1900.00 MHz  
Last Calib. Date : 12-Feb-2009  
Temperature : 21.30 °C  
Ambient Temp. : 22.20 °C  
Humidity : 52.00 RH%  
Epsilon : 52.33 F/m  
Sigma : 1.53 S/m  
Density : 1000.00 kg/cu. m

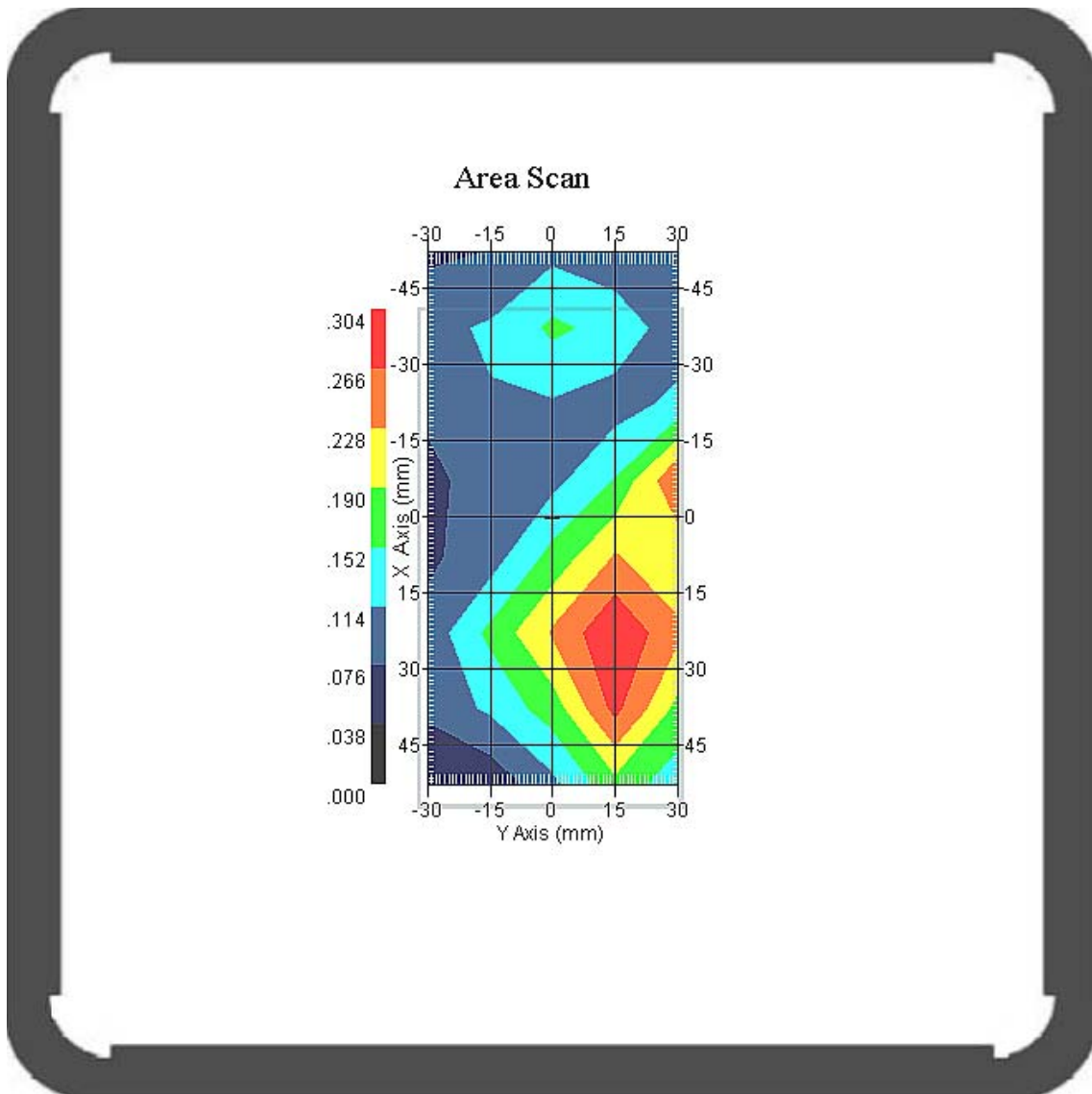
## Probe Data

Name : Probe 265  
Model : E020  
Type : E-Field Triangle  
Serial No. : 265  
Last Calib. Date : 09-May-2008  
Frequency : 1900.00 MHz  
Duty Cycle Factor: 8  
Conversion Factor: 5.1  
Probe Sensitivity: 1.20 1.20 1.20  $\mu\text{V}/(\text{V}/\text{m})^2$   
Compression Point: 95.00 mV  
Offset : 1.56 mm

Measurement Data

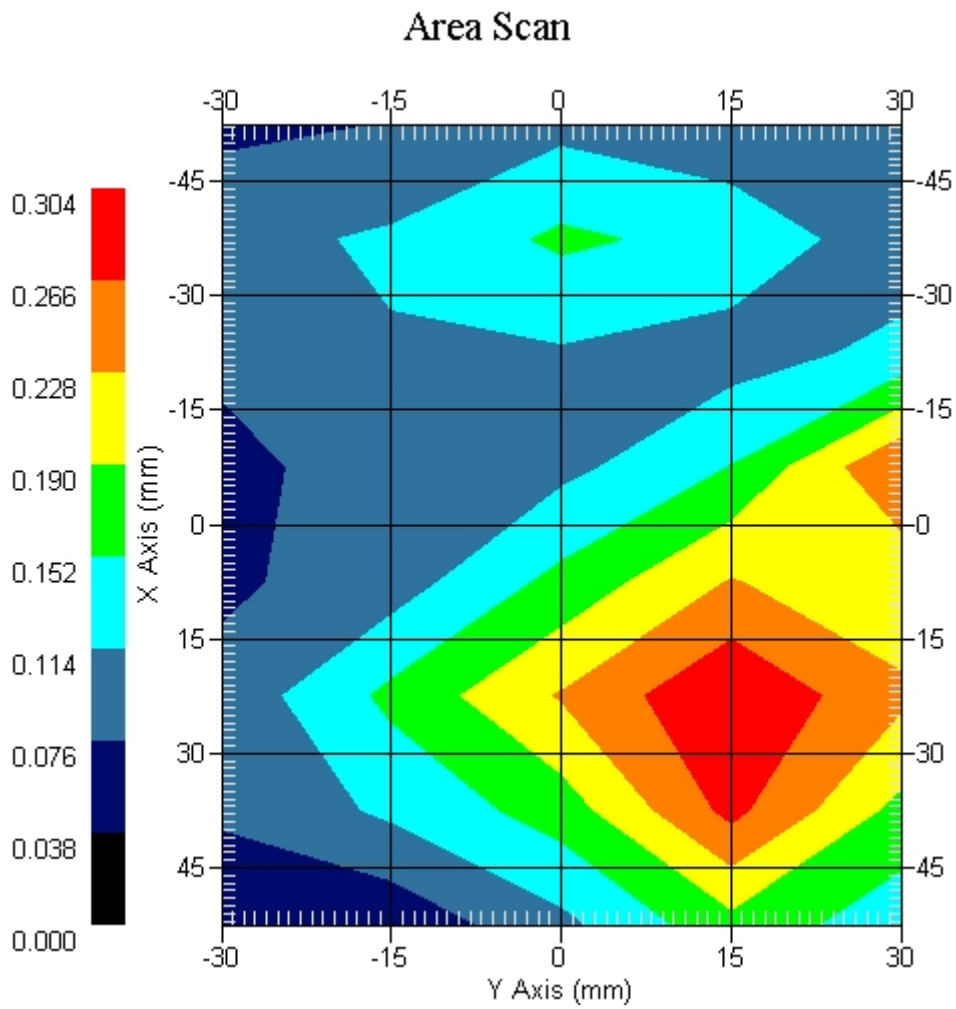
Crest Factor : 8  
Tissue Temp. : 21.30 °C  
Ambient Temp. : 22.10 °C  
Area Scan : 8x5x1 : Measurement x=15mm, y=15mm, z=4mm  
Zoom Scan : 5x5x8 : Measurement x=8mm, y=8mm, z=4mm  
Power Drift-Start : 0.138 W/kg  
Power Drift-Finish: 0.134 W/kg  
Power Drift (%) : -2.640

DUT Position : Touch  
Channel : 512



1 gram SAR value : 0.257 W/kg  
10 gram SAR value : 0.205 W/kg  
Area Scan Peak SAR : 0.301 W/kg  
Zoom Scan Peak SAR : 0.490 W/kg

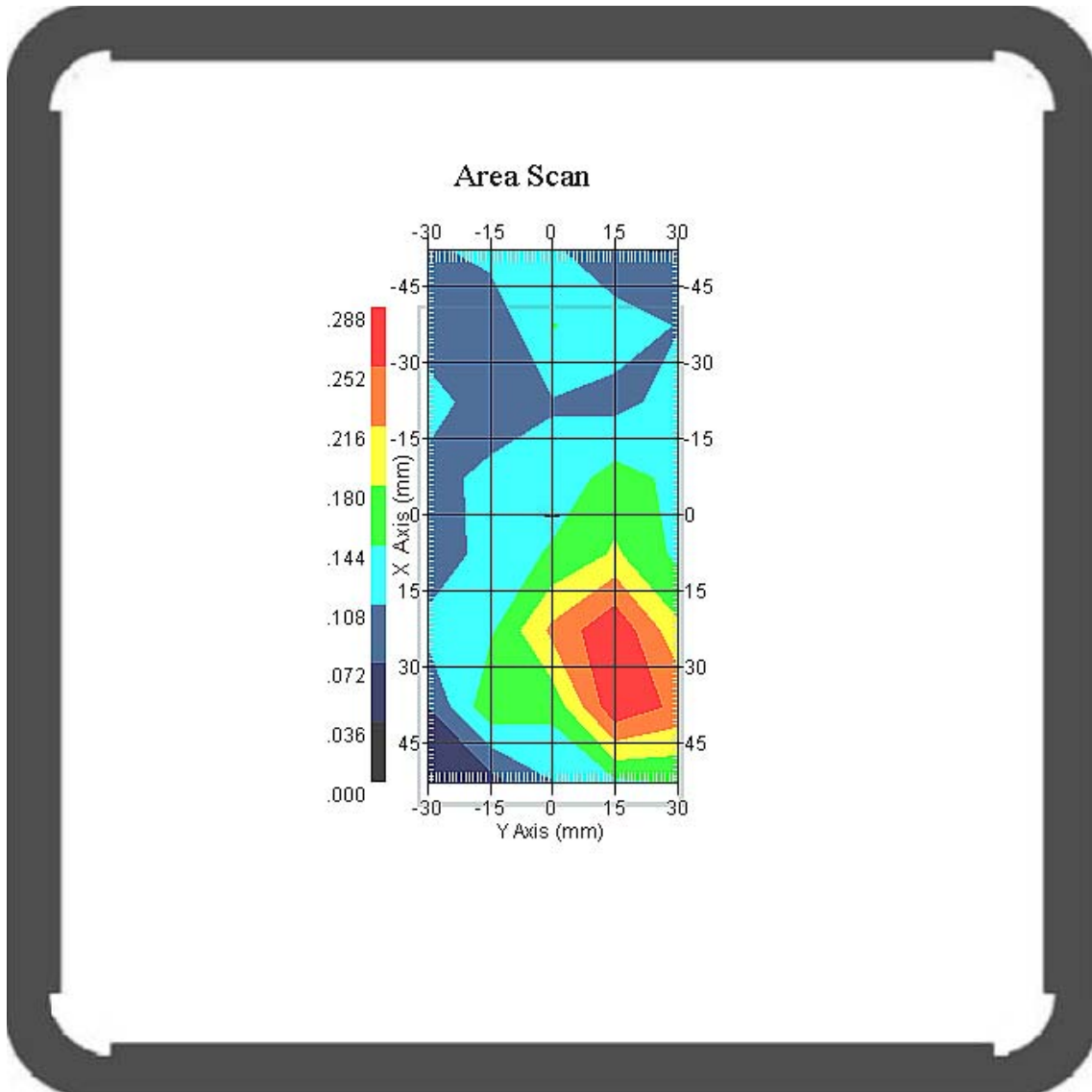
This is previous page plot (zoom in)



Measurement Data

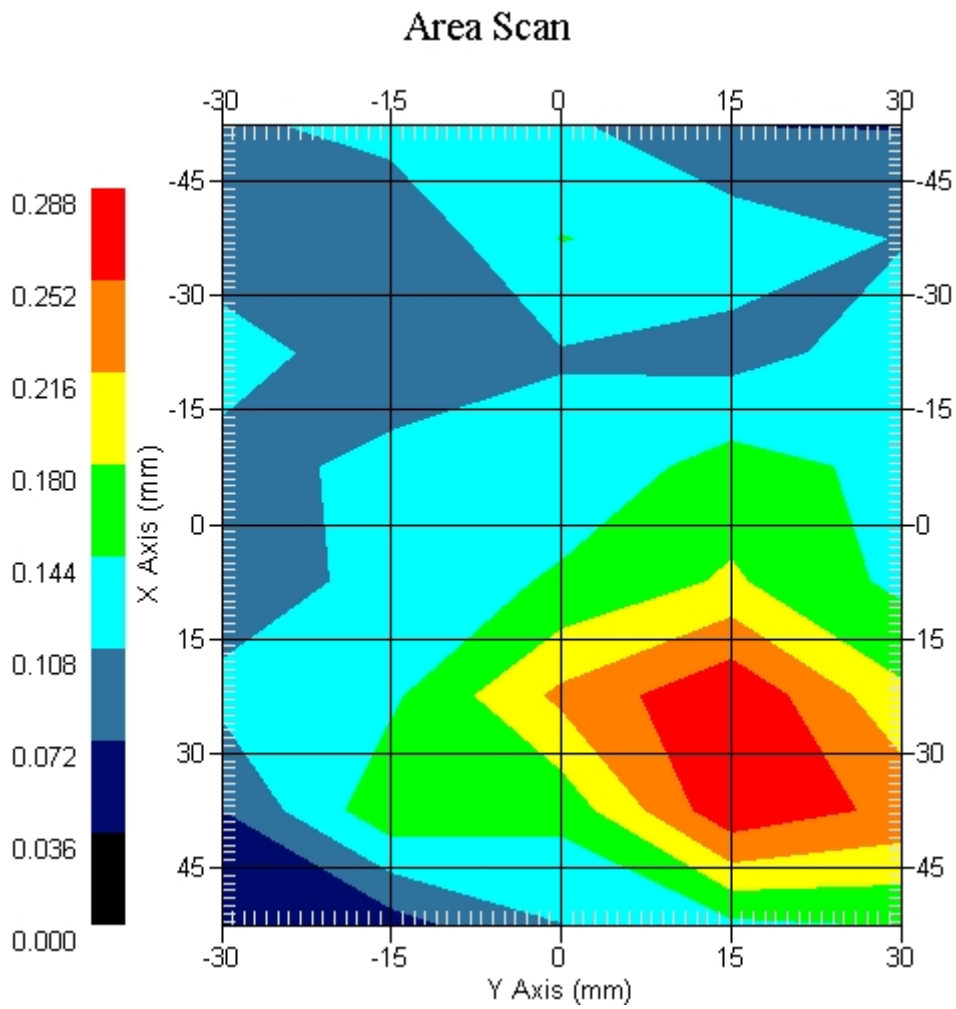
Crest Factor : 8  
Tissue Temp. : 21.30 °C  
Ambient Temp. : 22.10 °C  
Area Scan : 8x5x1 : Measurement x=15mm, y=15mm, z=4mm  
Zoom Scan : 5x5x8 : Measurement x=8mm, y=8mm, z=4mm  
Power Drift-Start : 0.102 W/kg  
Power Drift-Finish: 0.104 W/kg  
Power Drift (%) : 1.961

DUT Position : Touch  
Channel : 661



1 gram SAR value : 0.267 W/kg  
10 gram SAR value : 0.184 W/kg  
Area Scan Peak SAR : 0.284 W/kg  
Zoom Scan Peak SAR : 0.470 W/kg

This is previous page plot (zoom in)

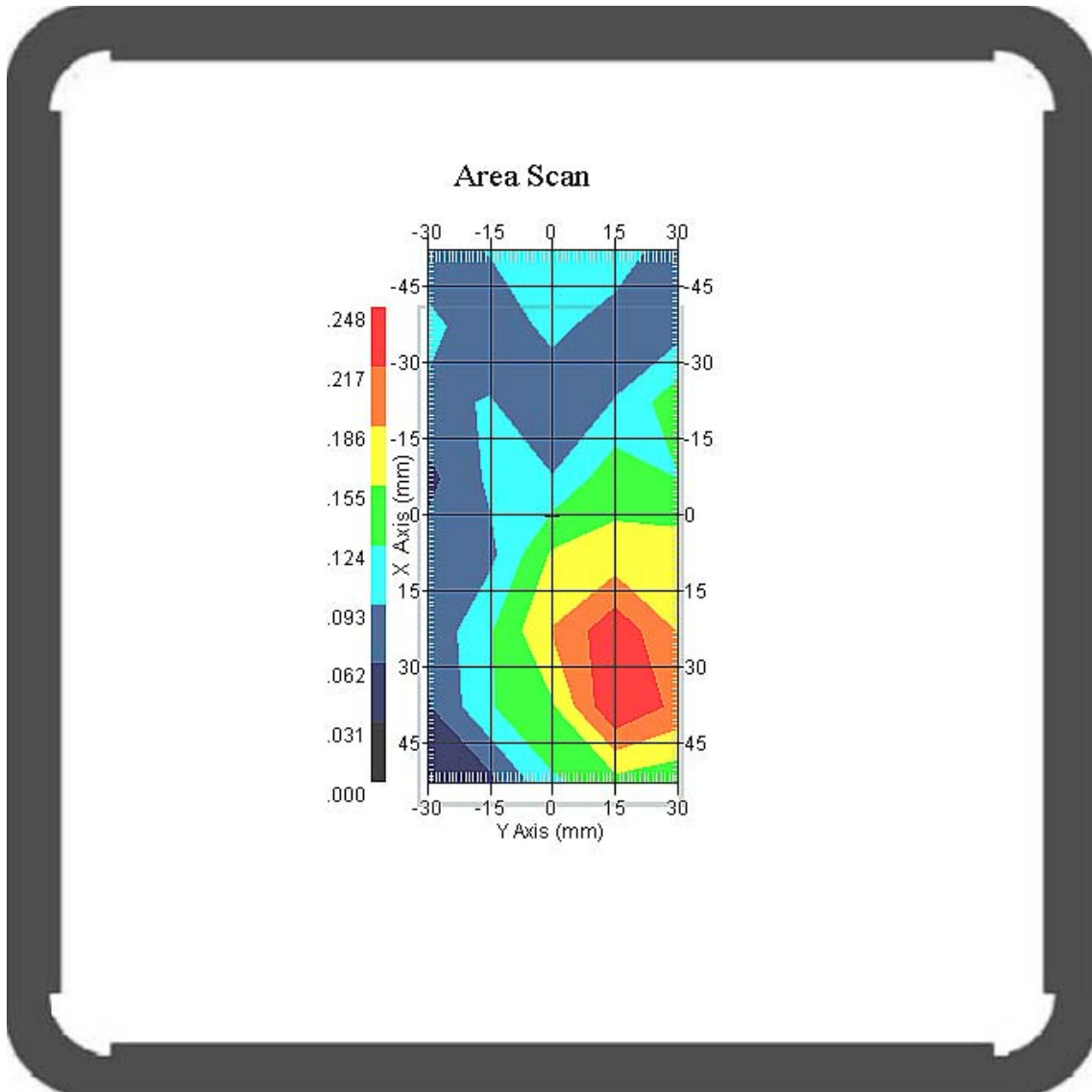




Measurement Data

Crest Factor : 8  
Tissue Temp. : 21.30 °C  
Ambient Temp. : 22.10 °C  
Area Scan : 8x5x1 : Measurement x=15mm, y=15mm, z=4mm  
Zoom Scan : 5x5x8 : Measurement x=8mm, y=8mm, z=4mm  
Power Drift-Start : 0.113 W/kg  
Power Drift-Finish: 0.115 W/kg  
Power Drift (%) : 1.770

DUT Position : Touch  
Channel : 810



1 gram SAR value : 0.230 W/kg  
10 gram SAR value : 0.161 W/kg  
Area Scan Peak SAR : 0.248 W/kg  
Zoom Scan Peak SAR : 0.390 W/kg

This is previous page plot (zoom in)

