

Test Laboratory: Sporton International Inc.

#### Device Under Test Properties

Manufacturer	Dimensions [mm]	IMEI	DUT Type
	326.0 x 228.0 x 15.0		Tablet

#### Exposure Conditions

Phantom Section	Position, Test Distance [mm]	Frequency [MHz]	Conversion Factor
5G	EDGE BOTTOM, 2.00	27550.0	1.0

#### Hardware Setup

Phantom	Medium	Probe, Calibration Date	DAE, Calibration Date
mmWave - xxxx	Air -	EUmmWV4 - SN9461_F1-78GHz, 2019-11-05	DAE4 Sn1424, 2020-01-24

#### Scans Setup

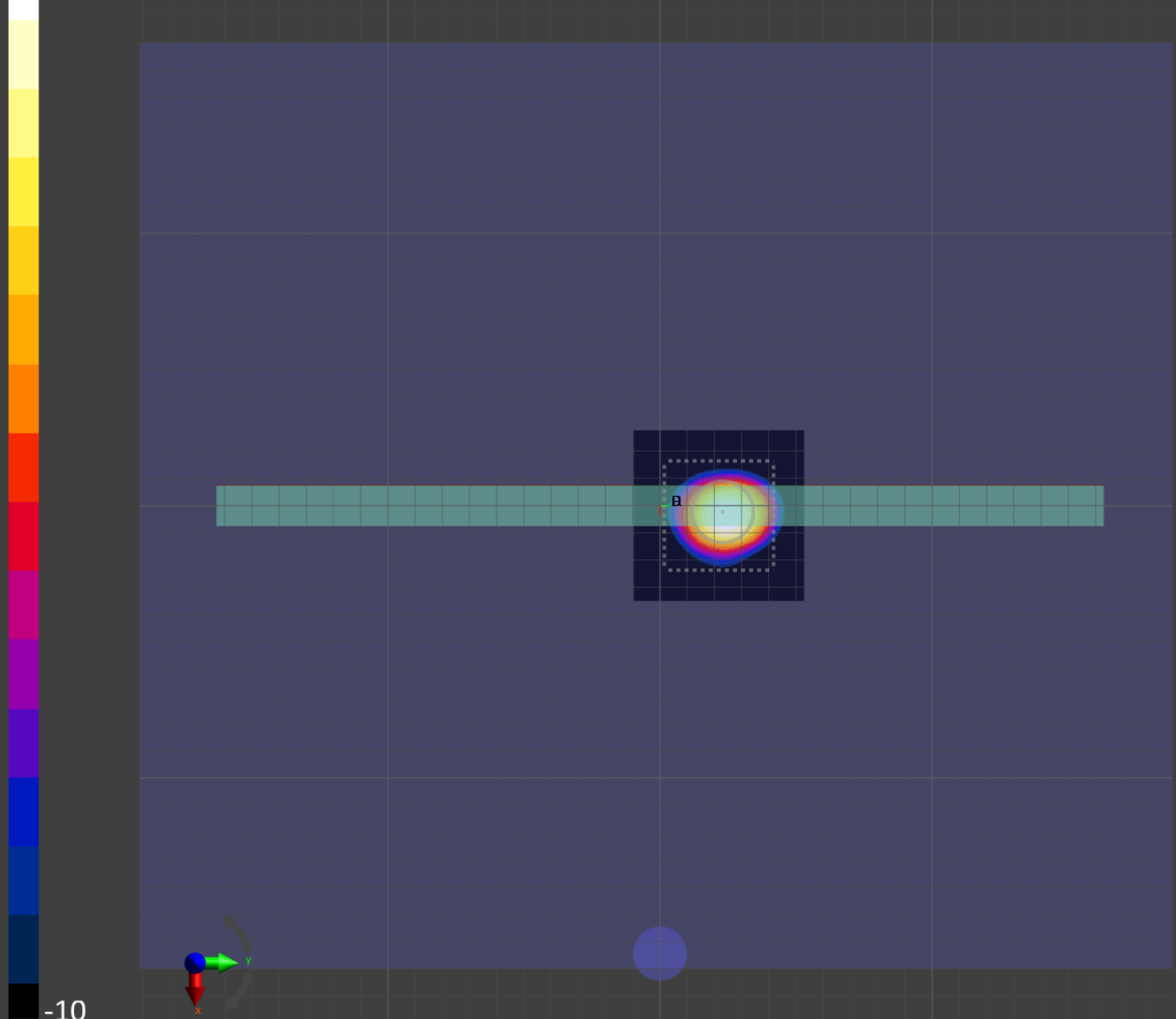
Grid Extents [mm]	60.0 x 60.0
Grid Steps [lambda]	0.25 x 0.25
Sensor Surface [mm]	2.0

#### Measurement Results

Date	2020-08-05, 03:16
Avg. Area [cm <sup>2</sup> ]	4.00
S <sub>avg inc</sub> [W/m <sup>2</sup> ]	4.68
S <sub>avg tot</sub> [W/m <sup>2</sup> ]	5.91
S <sub>peak</sub> [W/m <sup>2</sup> ]	15.7
E <sub>peak</sub> [V/m]	84.6
H <sub>peak</sub> [A/m]	0.232
Power Drift [dB]	-0.02

Averaged [4.0 cm<sup>2</sup>] |Re{S}|(x,y,z,f0) [dB(5.91W/m<sup>2</sup>)]

0



-10

Test Laboratory: Sporton International Inc.

#### Device Under Test Properties

Manufacturer	Dimensions [mm]	IMEI	DUT Type
	326.0 x 228.0 x 15.0		Tablet

#### Exposure Conditions

Phantom Section	Position, Test Distance [mm]	Frequency [MHz]	Conversion Factor
5G	EDGE BOTTOM, 2.00	38500.0	1.0

#### Hardware Setup

Phantom	Medium	Probe, Calibration Date	DAE, Calibration Date
mmWave - xxxx	Air -	EUmmWV4 - SN9461_F1-78GHz, 2019-11-05	DAE4 Sn1424, 2020-01-24

#### Scans Setup

Grid Extents [mm]	60.0 x 60.0
Grid Steps [lambda]	0.25 x 0.25
Sensor Surface [mm]	2.0

#### Measurement Results

Date	2020-08-28, 02:33
Avg. Area [cm <sup>2</sup> ]	4.00
S <sub>avg inc</sub> [W/m <sup>2</sup> ]	3.11
S <sub>avg tot</sub> [W/m <sup>2</sup> ]	4.16
S <sub>peak</sub> [W/m <sup>2</sup> ]	32.5
E <sub>peak</sub> [V/m]	116
H <sub>peak</sub> [A/m]	0.282
Power Drift [dB]	0.04

Averaged [4.0 cm<sup>2</sup>] |Re{S}|(x,y,z,f0) [dB(4.16W/m<sup>2</sup>)]

0



-10