

Test Laboratory: Sporton International Inc.

#### Device Under Test Properties

Manufacturer	Dimensions [mm]	IMEI	DUT Type
	100.0 x 100.0 x 100.0		Validation source

#### Exposure Conditions

Phantom Section	Position, Test Distance [mm]	Frequency [MHz]	Conversion Factor
5G	FRONT, 5.55	30000.0	1.0

#### Hardware Setup

Phantom	Medium	Probe, Calibration Date	DAE, Calibration Date
mmWave - xxxx	Air -	EUmmWV4 - SN9461_F1-78GHz, 2019-11-05	DAE4 Sn1424, 2020-01-24

#### Scans Setup

Grid Extents [mm]	60.0 x 60.0
Grid Steps [ $\lambda$ ]	0.25 x 0.25
Sensor Surface [mm]	5.55

#### Measurement Results

Date	2020-07-18, 00:16
Avg. Area [ $\text{cm}^2$ ]	4.00
$S_{\text{avg inc}}$ [ $\text{W}/\text{m}^2$ ]	32.1
$S_{\text{avg tot}}$ [ $\text{W}/\text{m}^2$ ]	32.7
$S_{\text{peak}}$ [ $\text{W}/\text{m}^2$ ]	46.4
$E_{\text{peak}}$ [V/m]	132
$H_{\text{peak}}$ [A/m]	0.356
Power Drift [dB]	-0.00

Averaged [4.0 cm<sup>2</sup>] |Re{S}|(x,y,z,f0) [dB(32.7W/m<sup>2</sup>)]

0



-20

Test Laboratory: Sporton International Inc.

#### Device Under Test Properties

Manufacturer	Dimensions [mm]	IMEI	DUT Type
	100.0 x 100.0 x 100.0		Validation source

#### Exposure Conditions

Phantom Section	Position, Test Distance [mm]	Frequency [MHz]	Conversion Factor
5G	FRONT, 5.55	30000.0	1.0

#### Hardware Setup

Phantom	Medium	Probe, Calibration Date	DAE, Calibration Date
mmWave - xxxx	Air -	EUmmWV4 - SN9461_F1-78GHz, 2019-11-05	DAE4 Sn1424, 2020-01-24

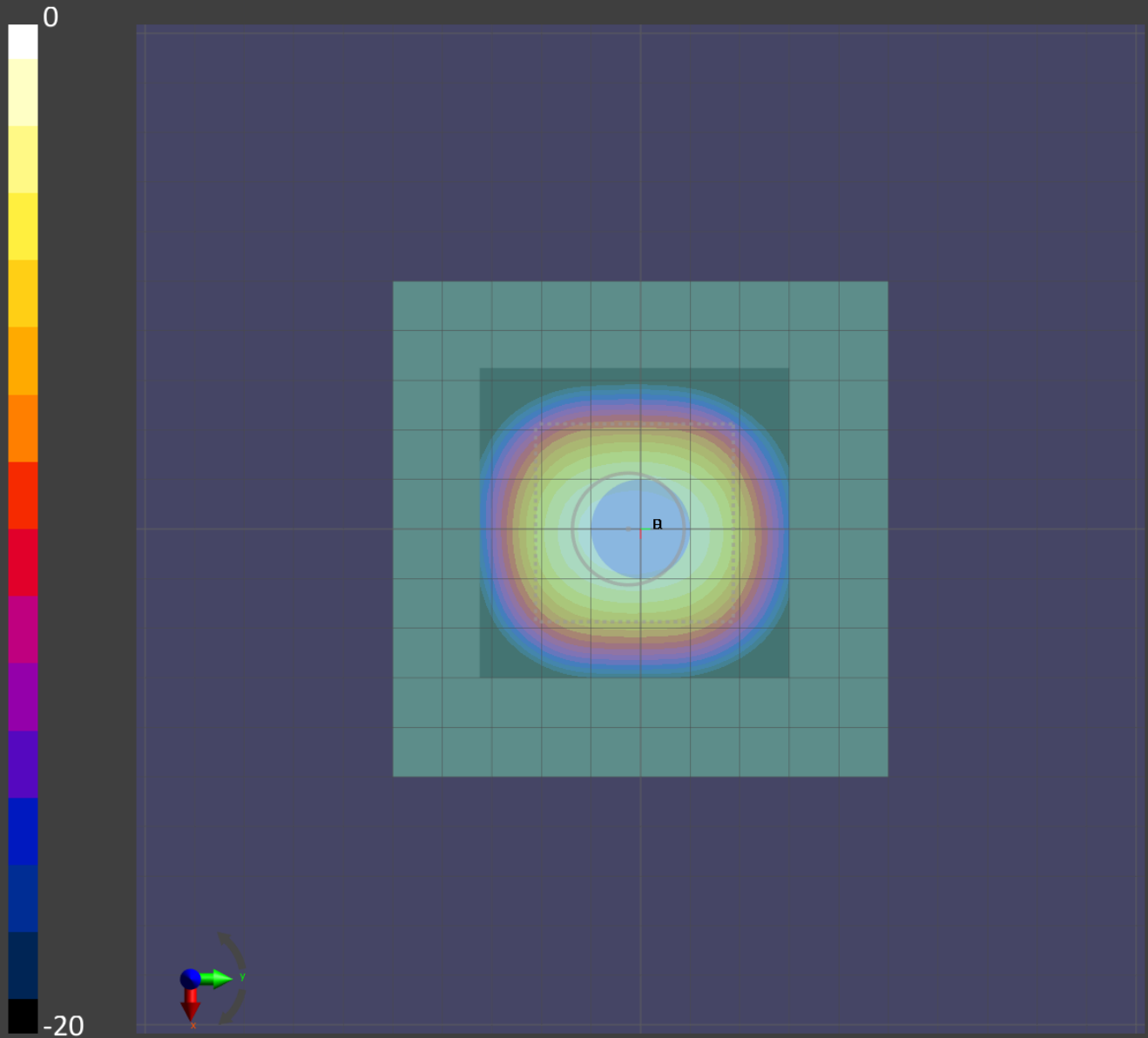
#### Scans Setup

Grid Extents [mm]	60.0 x 60.0
Grid Steps [lambda]	0.25 x 0.25
Sensor Surface [mm]	5.55

#### Measurement Results

Date	2020-08-01, 00:38
Avg. Area [cm <sup>2</sup> ]	4.00
S <sub>avg inc</sub> [W/m <sup>2</sup> ]	32.1
S <sub>avg tot</sub> [W/m <sup>2</sup> ]	32.6
S <sub>peak</sub> [W/m <sup>2</sup> ]	46.8
E <sub>peak</sub> [V/m]	132
H <sub>peak</sub> [A/m]	0.360
Power Drift [dB]	0.02

Averaged [4.0 cm<sup>2</sup>] |Re{S}|(x,y,z,f0) [dB(32.6W/m<sup>2</sup>)]



Test Laboratory: Sporton International Inc.

#### Device Under Test Properties

Manufacturer	Dimensions [mm]	IMEI	DUT Type
	100.0 x 100.0 x 100.0		Validation source

#### Exposure Conditions

Phantom Section	Position, Test Distance [mm]	Frequency [MHz]	Conversion Factor
5G	FRONT, 5.50	30000.0	1.0

#### Hardware Setup

Phantom	Medium	Probe, Calibration Date	DAE, Calibration Date
mmWave - xxxx	Air -	EUmmWV4 - SN9461_F1-78GHz, 2019-11-05	DAE4 Sn1424, 2020-01-24

#### Scans Setup

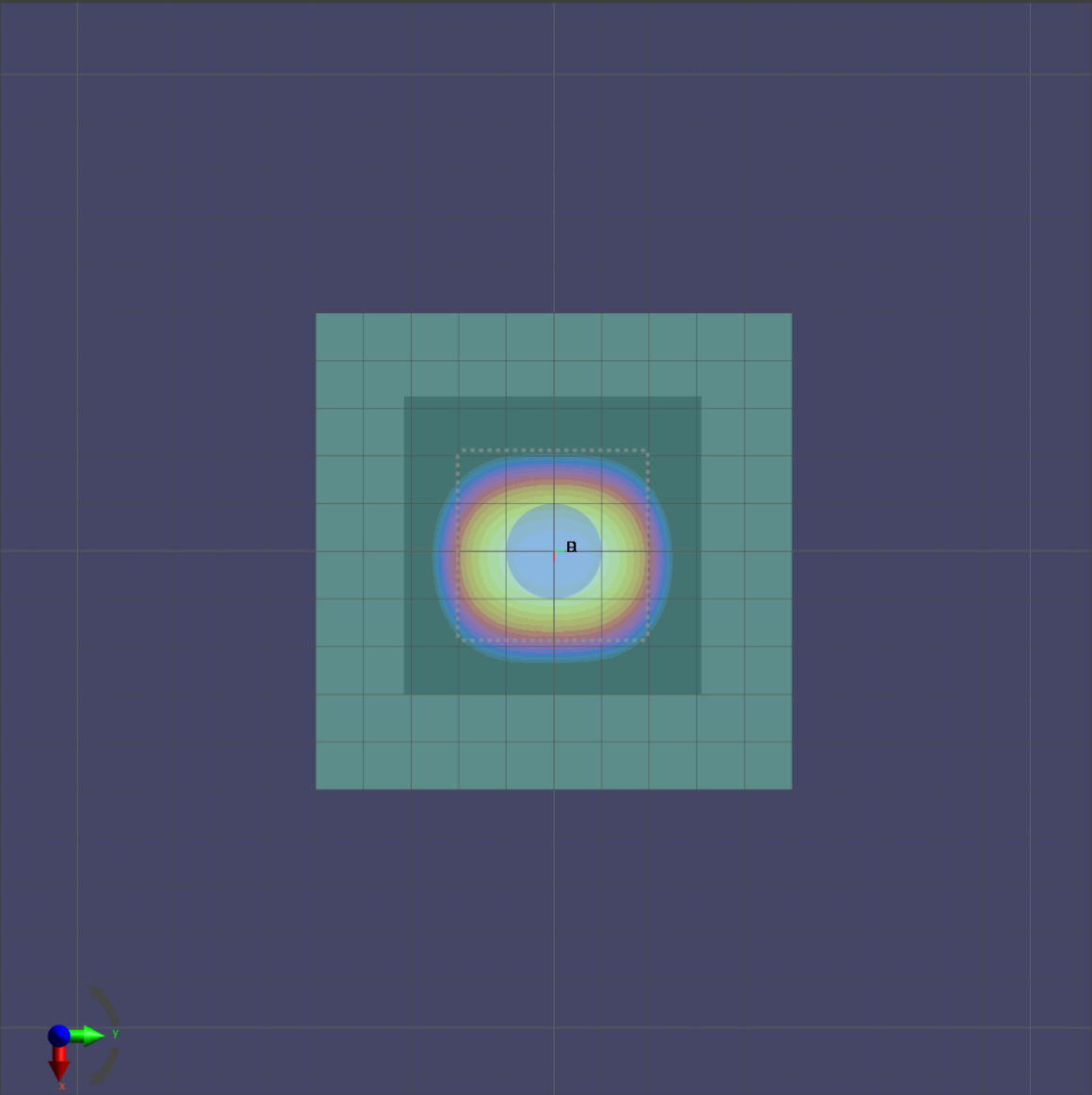
Grid Extents [mm]	60.0 x 60.0
Grid Steps [lambda]	0.25 x 0.25
Sensor Surface [mm]	5.5

#### Measurement Results

Date	2020-08-27, 10:23
Avg. Area [cm <sup>2</sup> ]	4.00
S <sub>avg inc</sub> [W/m <sup>2</sup> ]	31.0
S <sub>avg tot</sub> [W/m <sup>2</sup> ]	31.5
S <sub>peak</sub> [W/m <sup>2</sup> ]	46.2
E <sub>peak</sub> [V/m]	129
H <sub>peak</sub> [A/m]	0.361
Power Drift [dB]	-0.07

Averaged [4.0 cm<sup>2</sup>] |Re{S}|(x,y,z,f0) [dB(31.5W/m<sup>2</sup>)]

0



B

-10