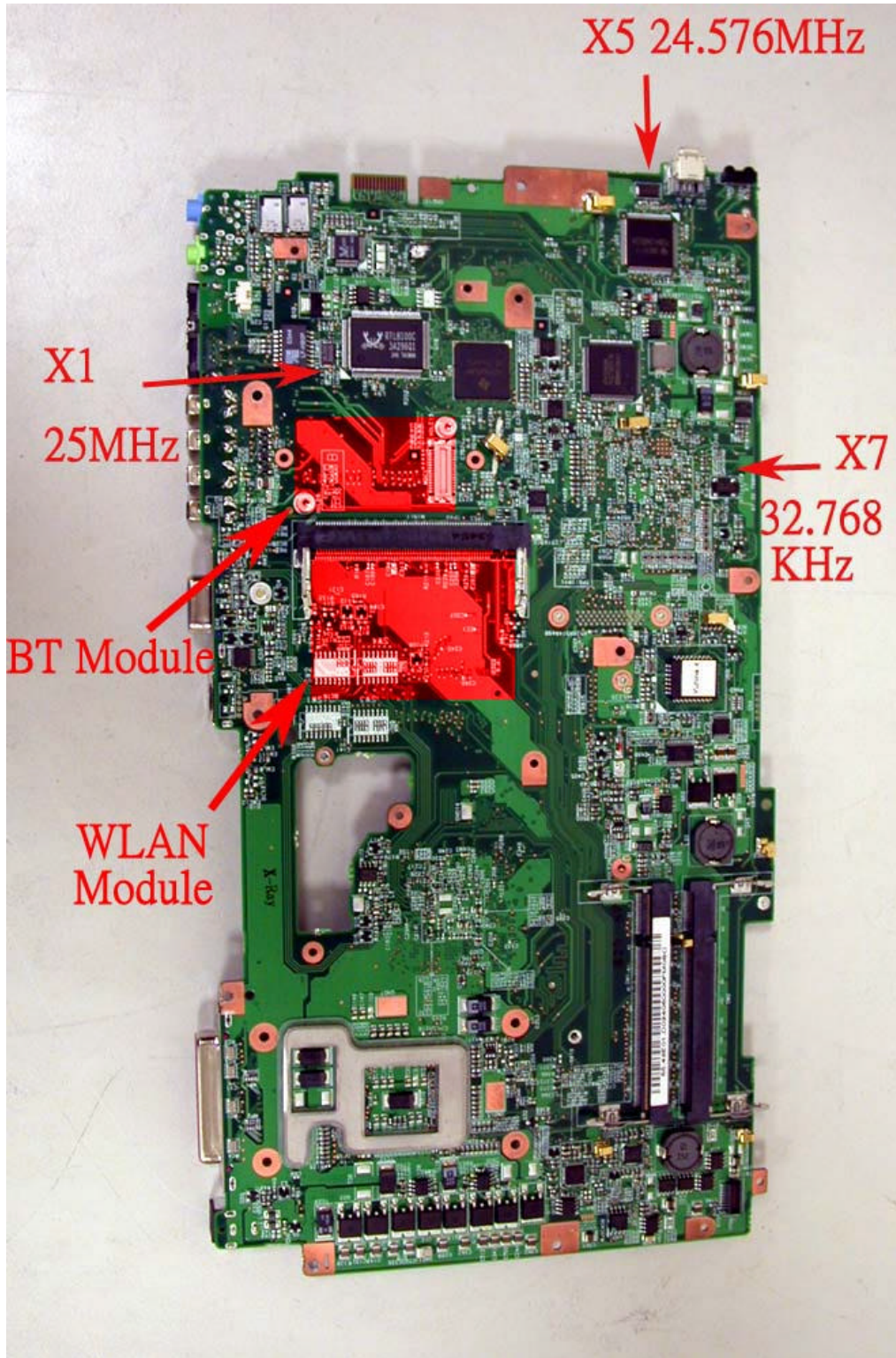
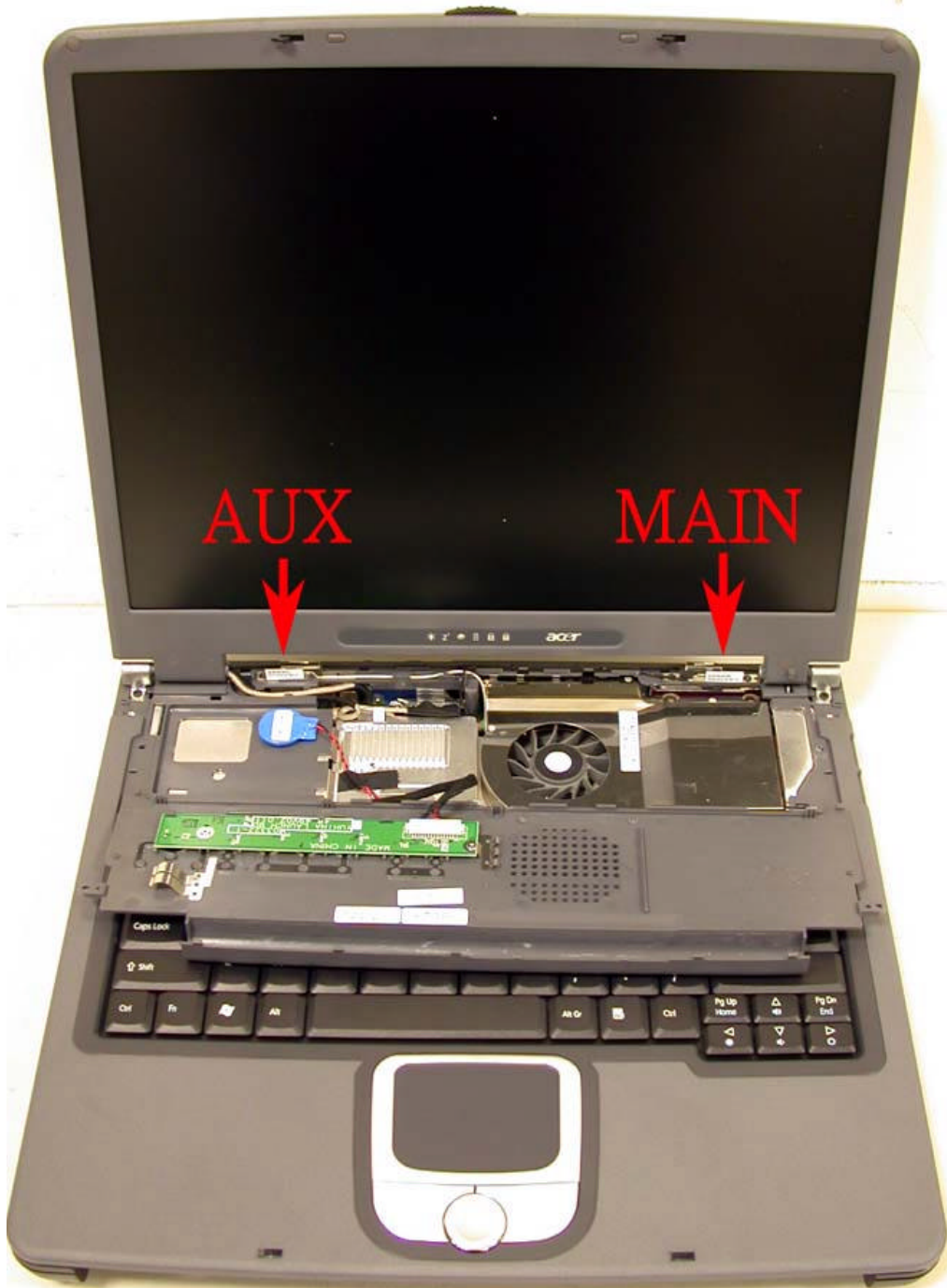


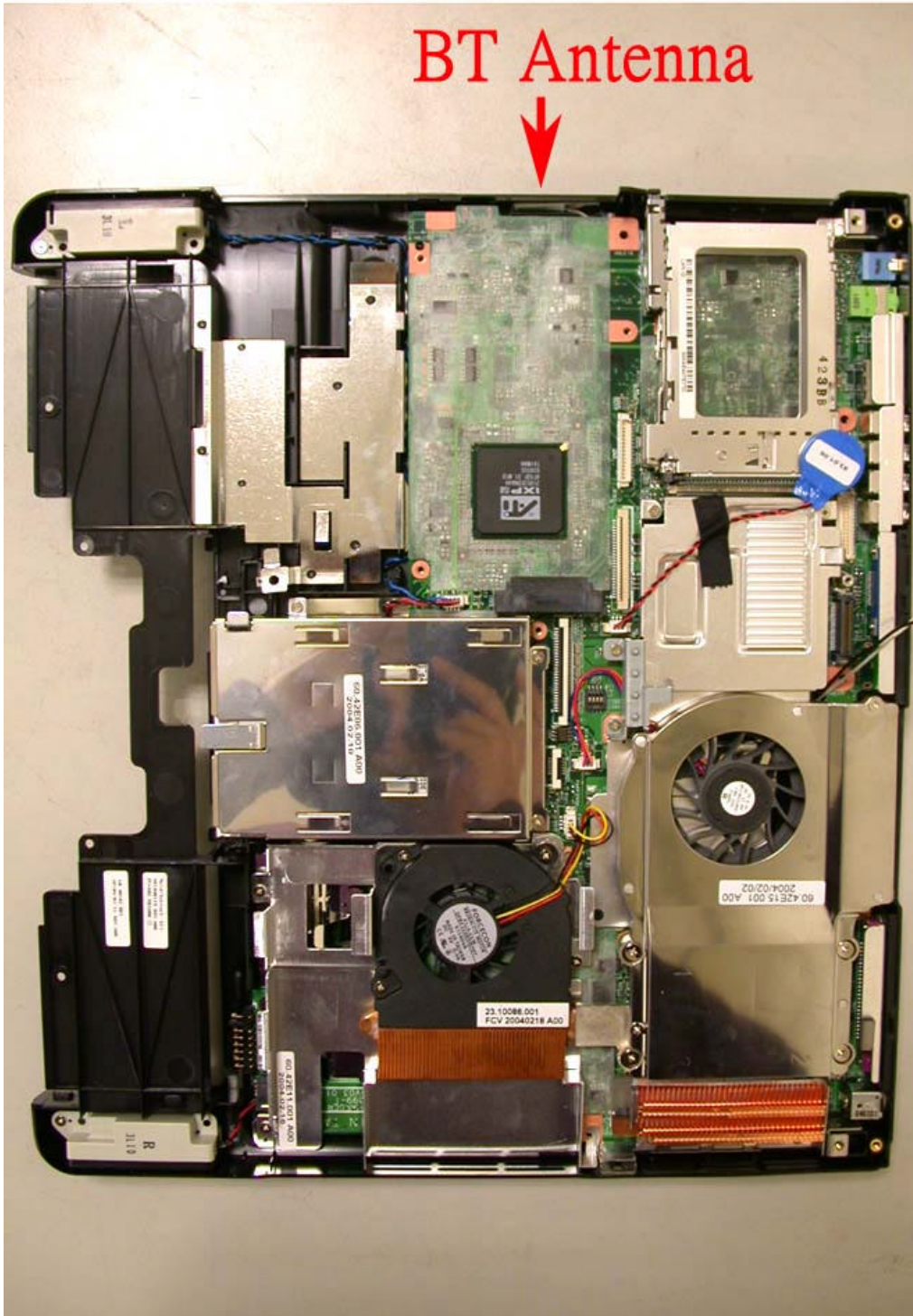
EUT-5



EUT-6



EUT-7

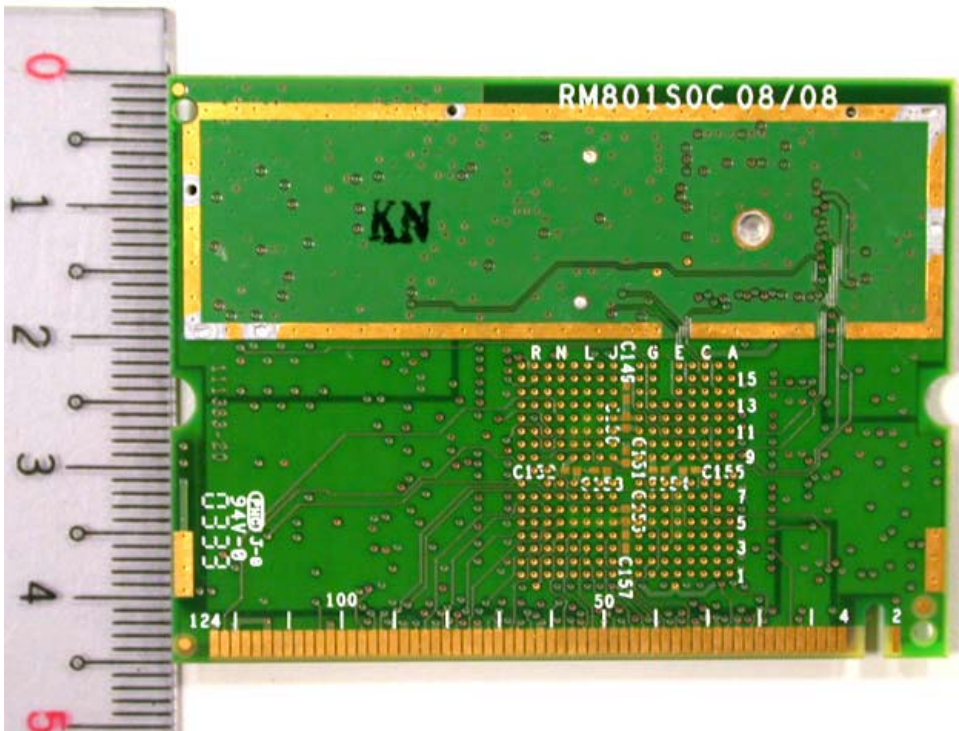
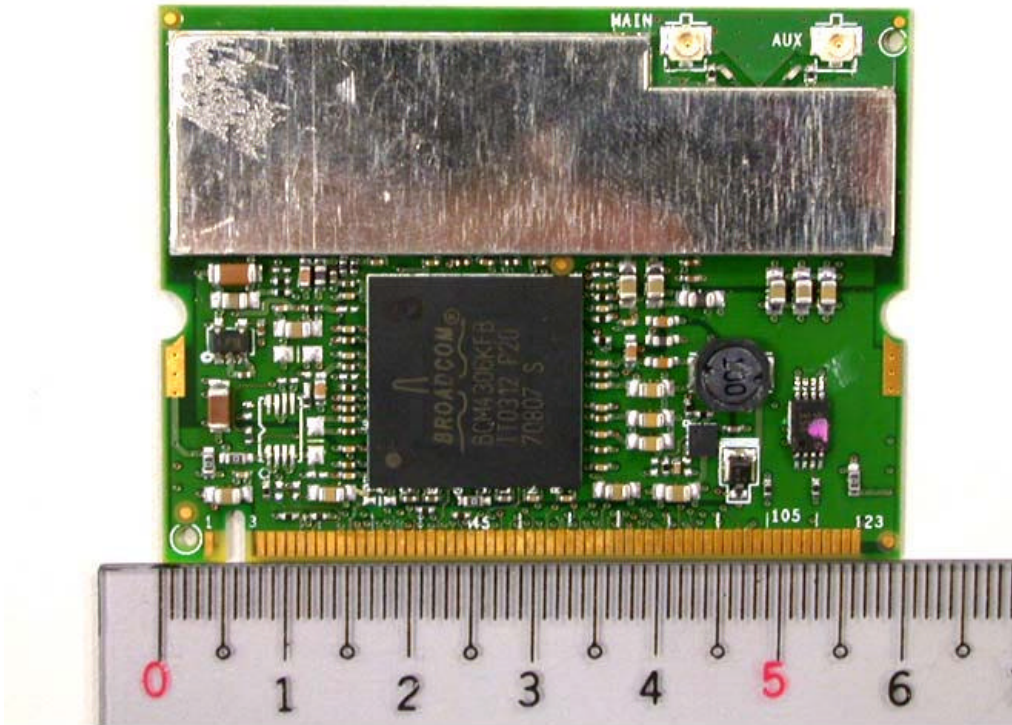


**International Standards Laboratory**

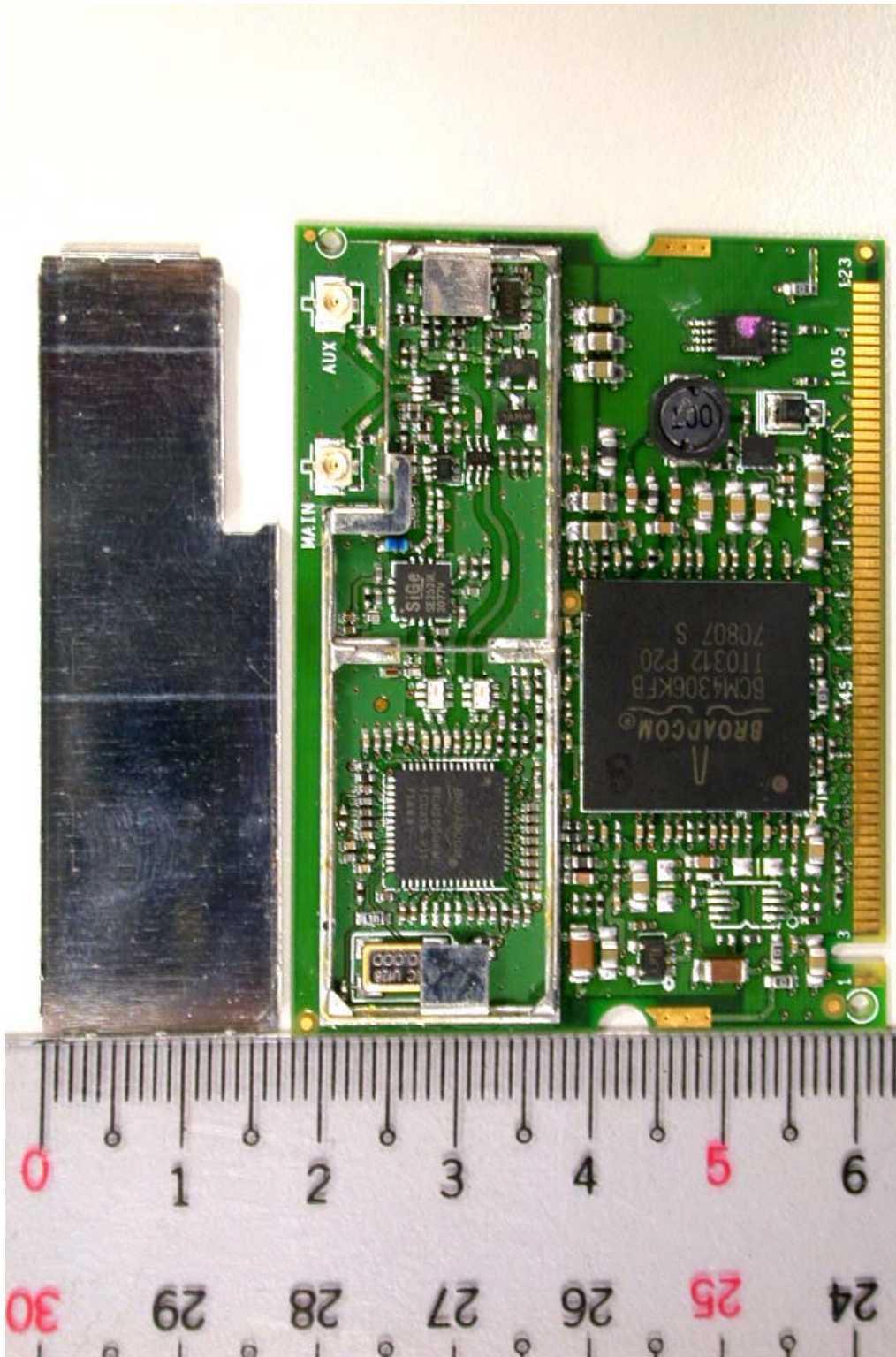
**Report Number: ISL-04LR015P**

HC LAB: NVLAP:200234-0; VCCI: R-341, C-354; NEMKO: ELA 113a, 113c; BSMI: SL2-IN-E-0037; SL2-R1-E-0037; CNLA: 1178  
LT LAB: NVLAP:200234-0; VCCI: R-1435, C-1440; NEMKO: ELA 113b, 113d; BSMI: SL2-IN-E-0013; CNLA: 0997

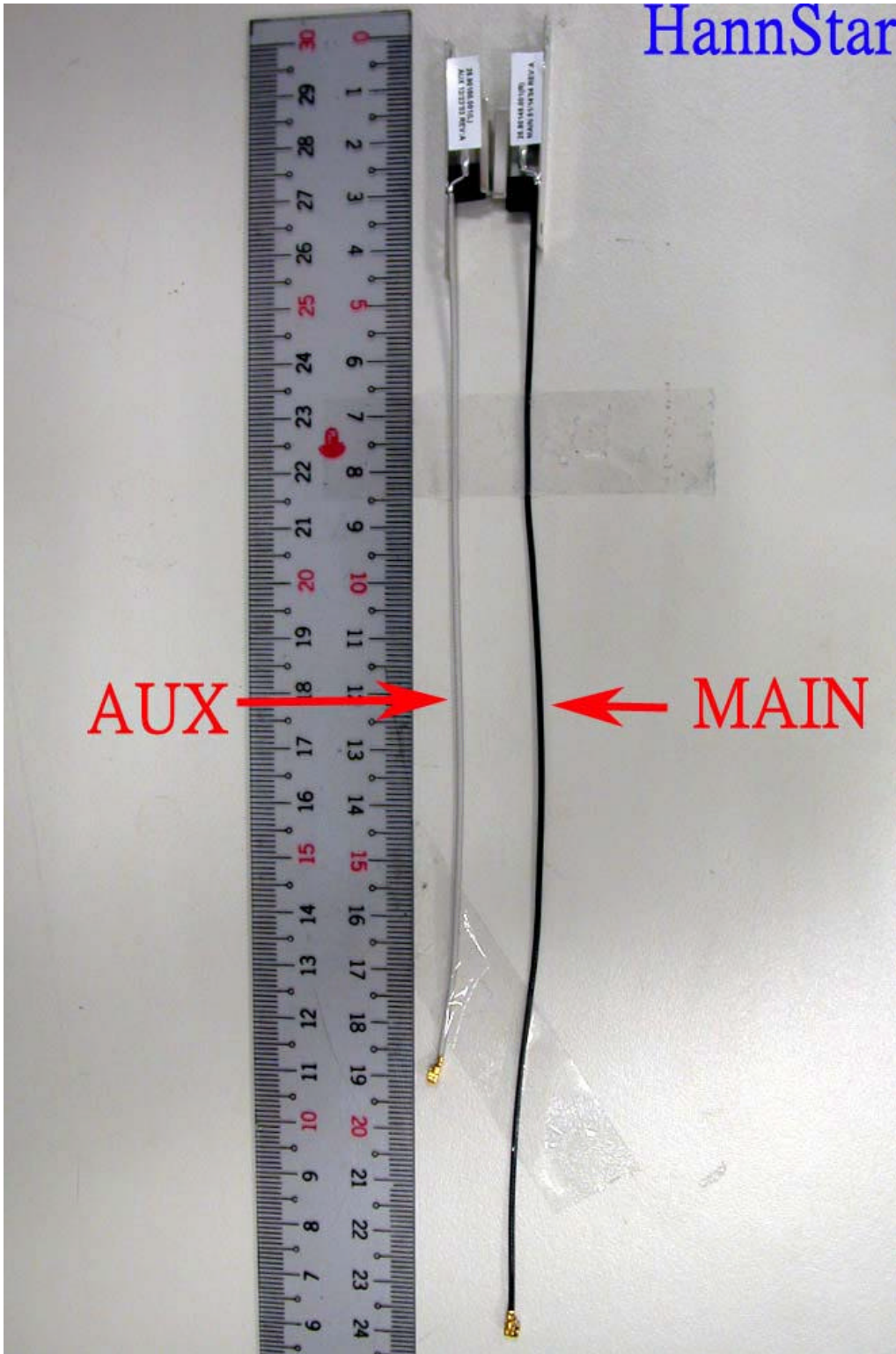
EUT-8



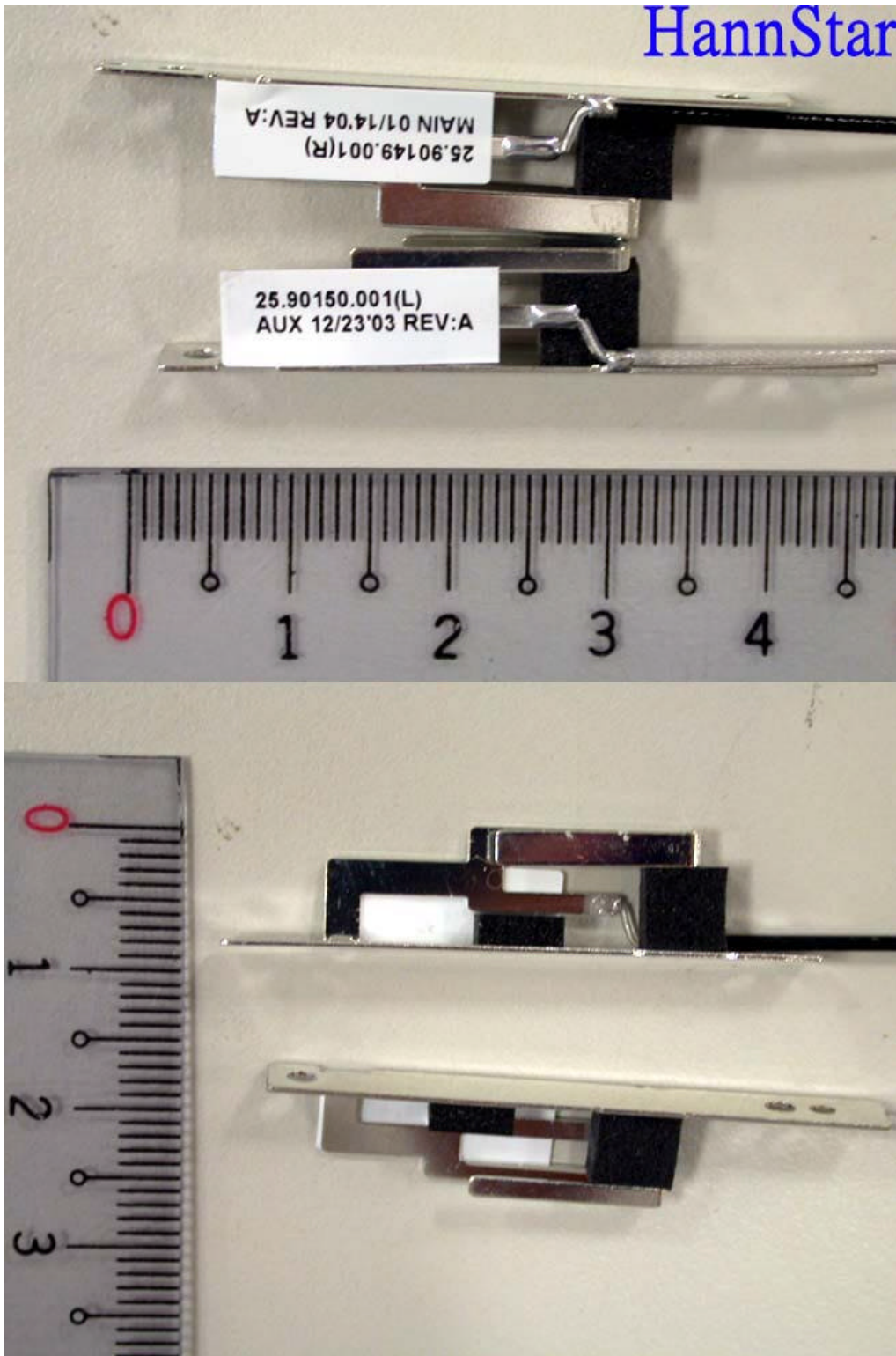
EUT-9



EUT-10

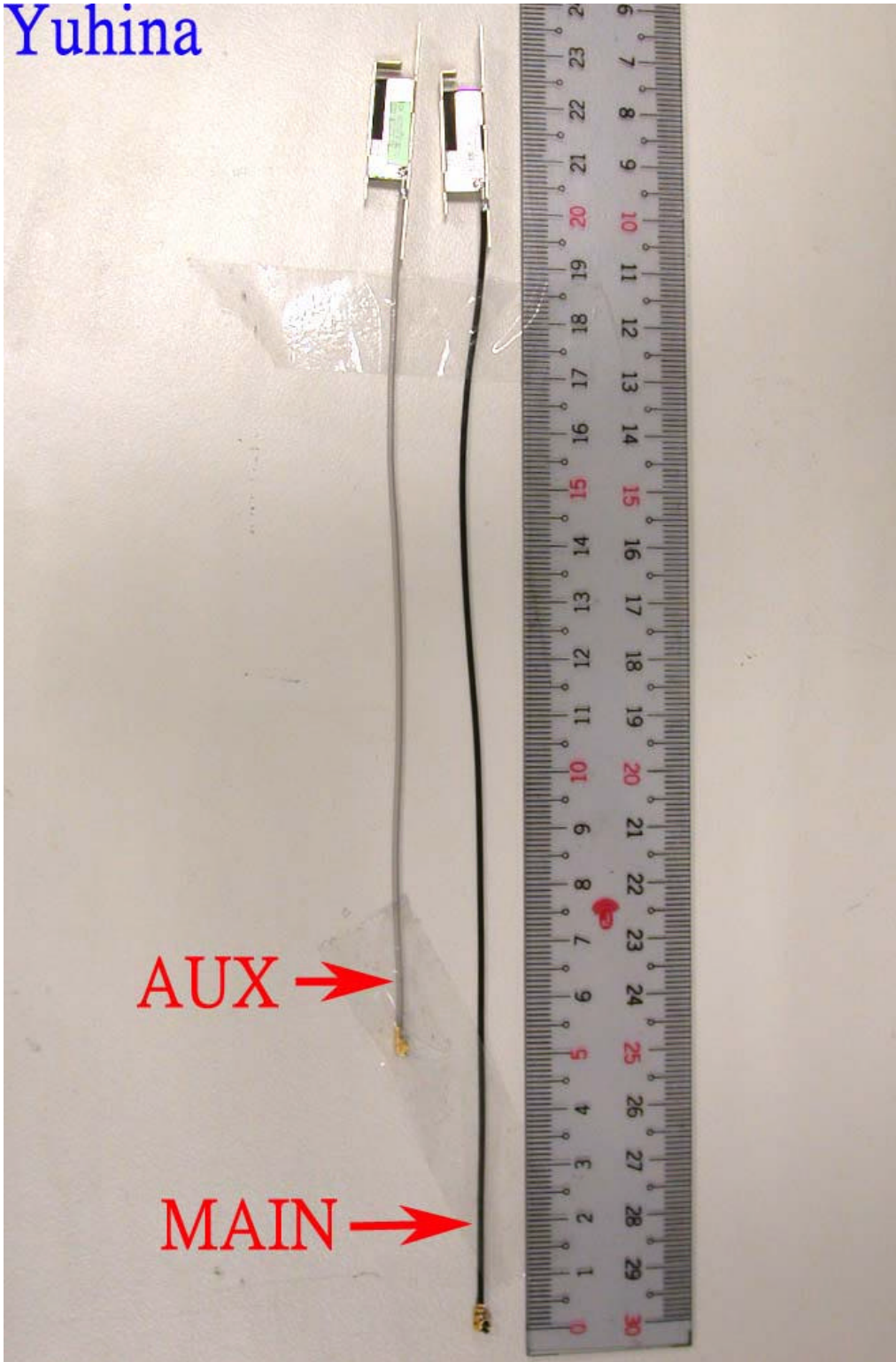


EUT-11



EUT-12

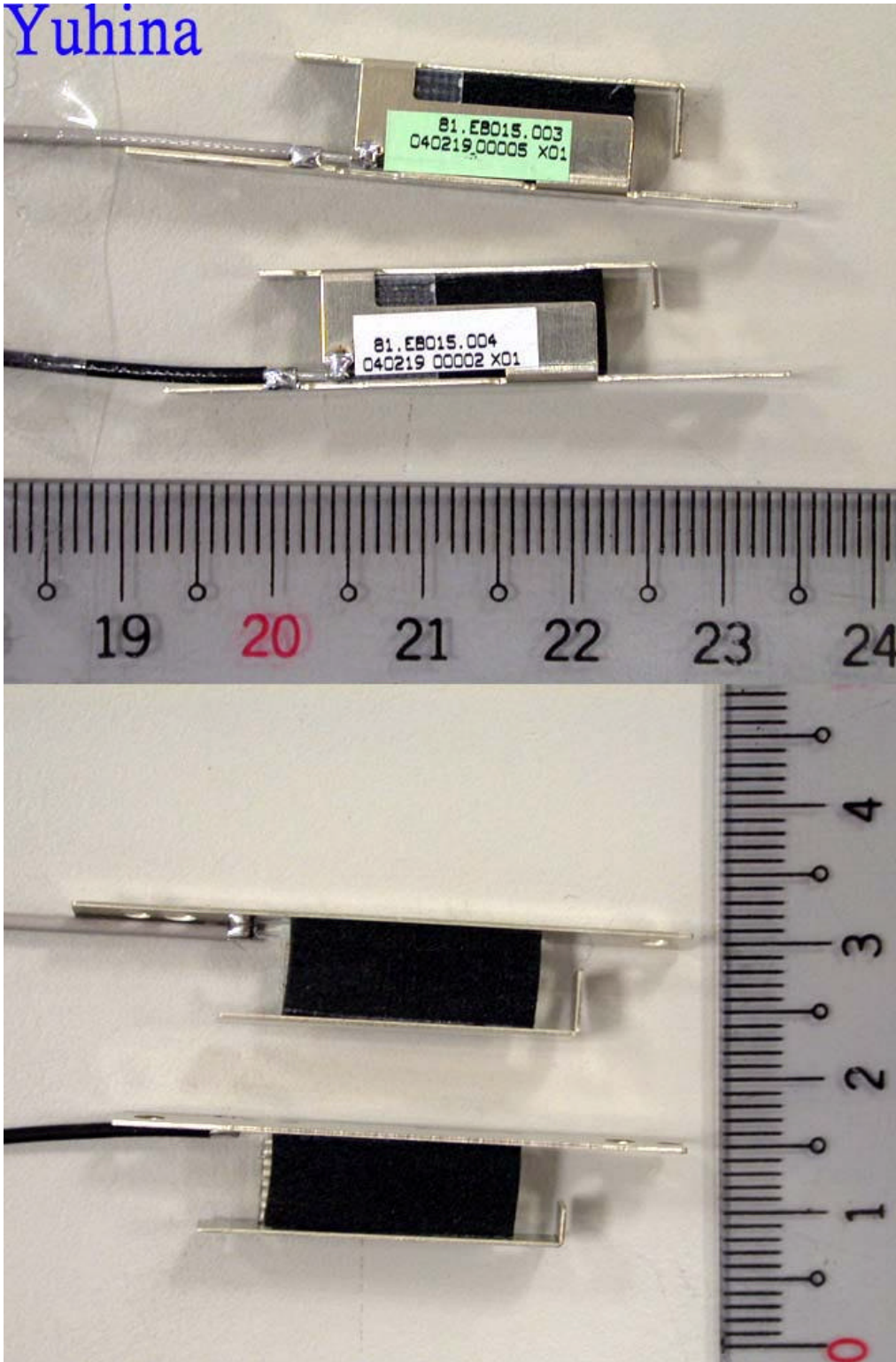
Yuhina



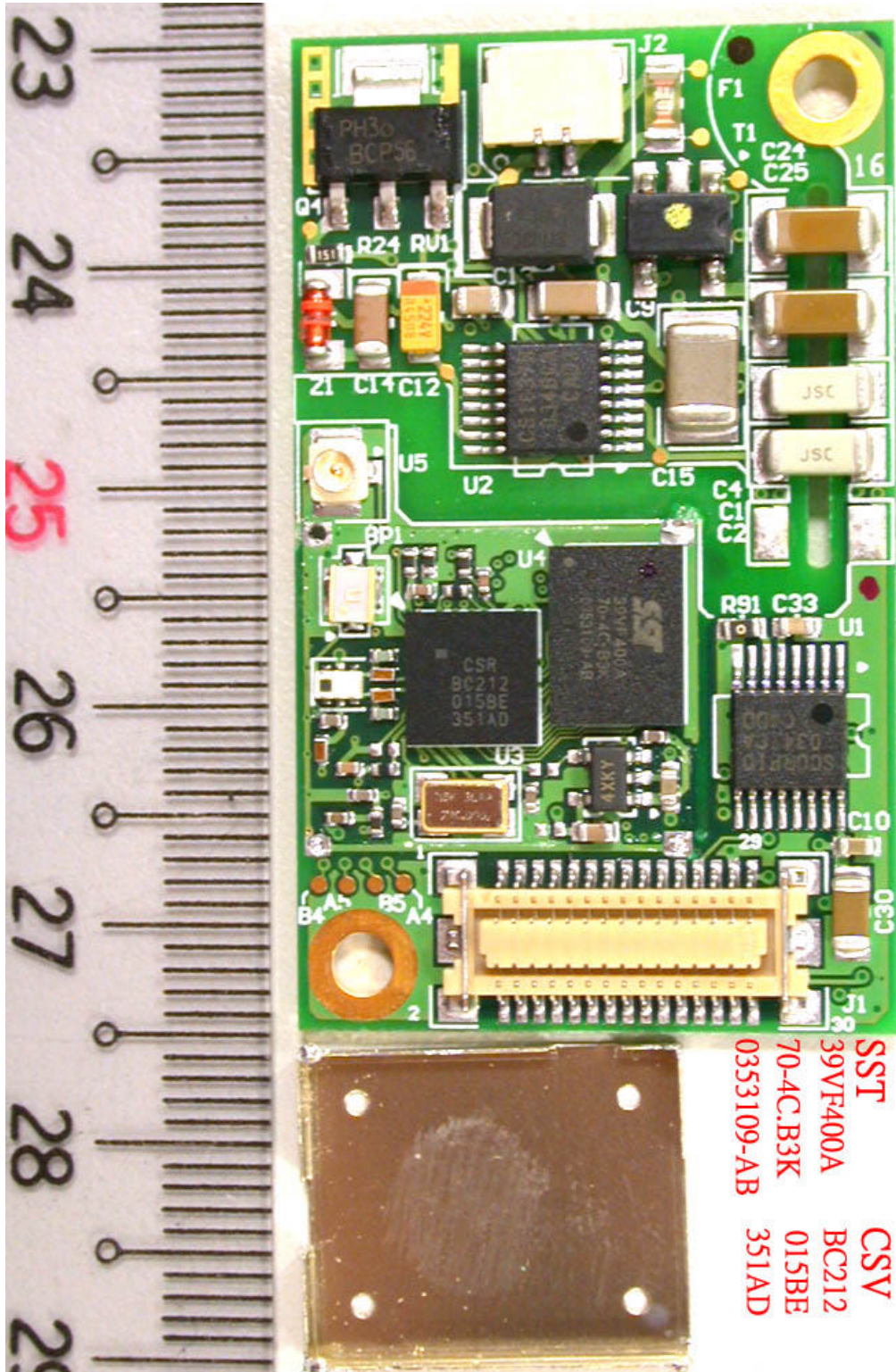


EUT-13

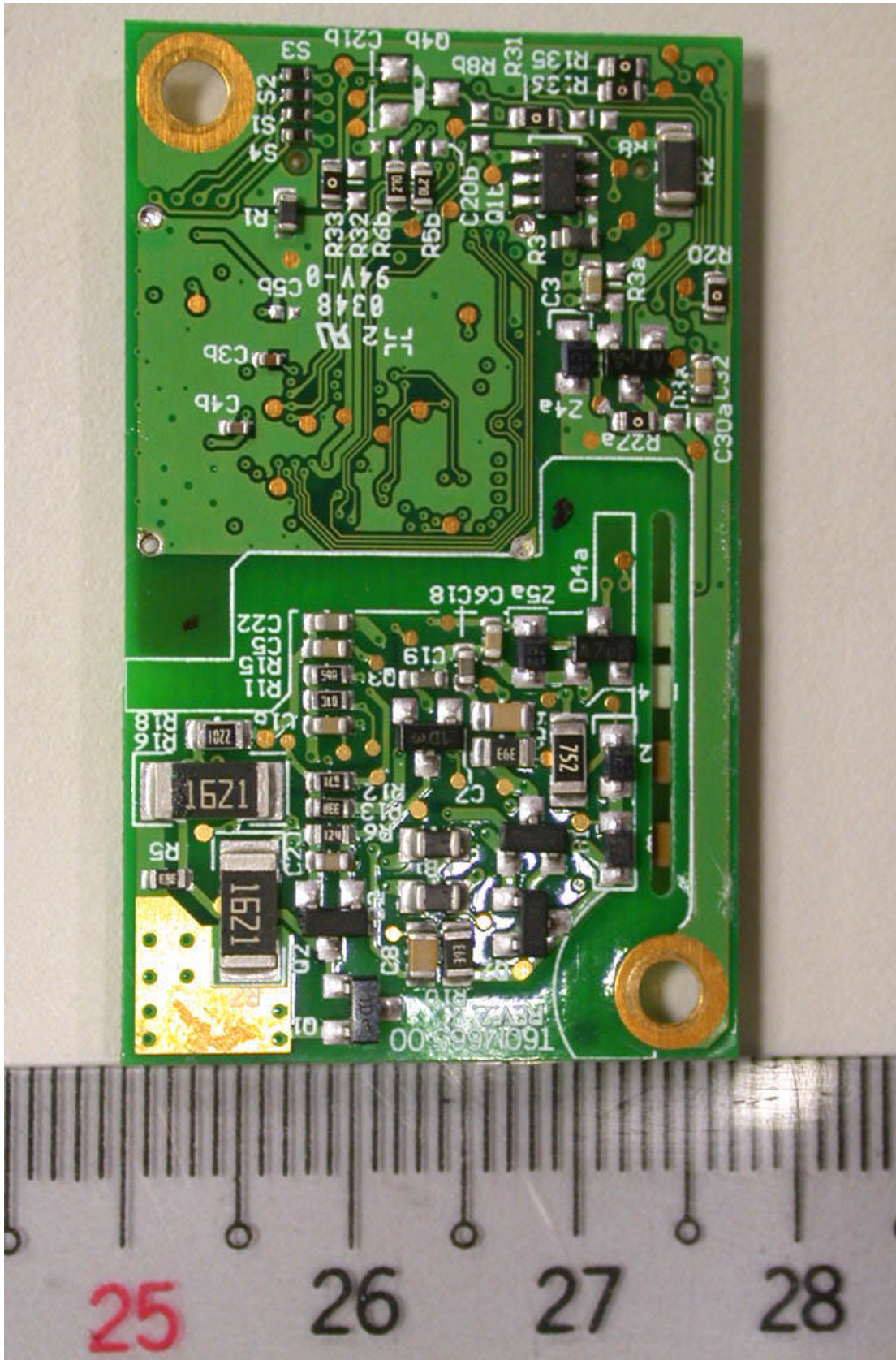
Yuhina



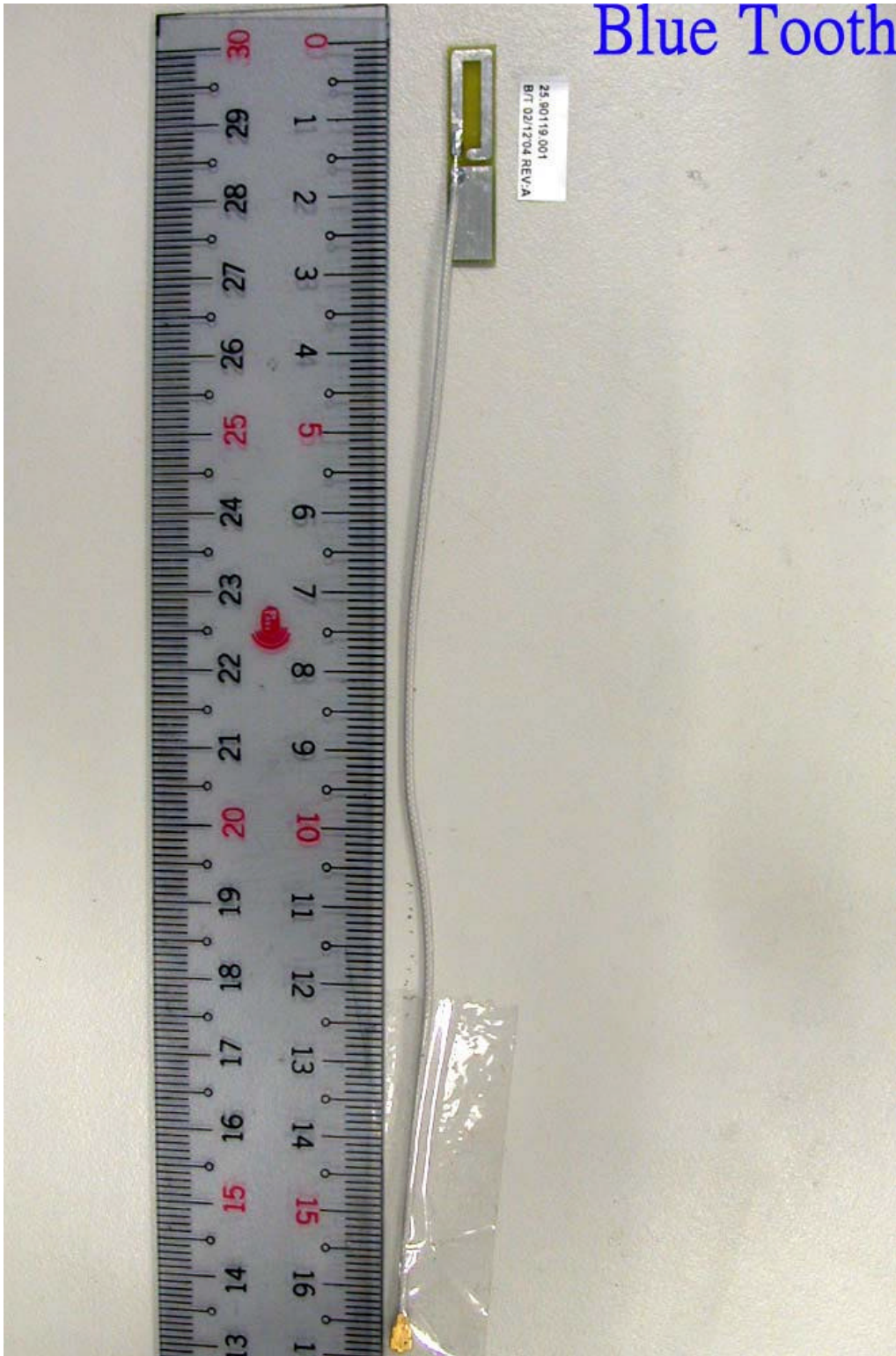
EUT-14



EUT-15



EUT-16



EUT-17

