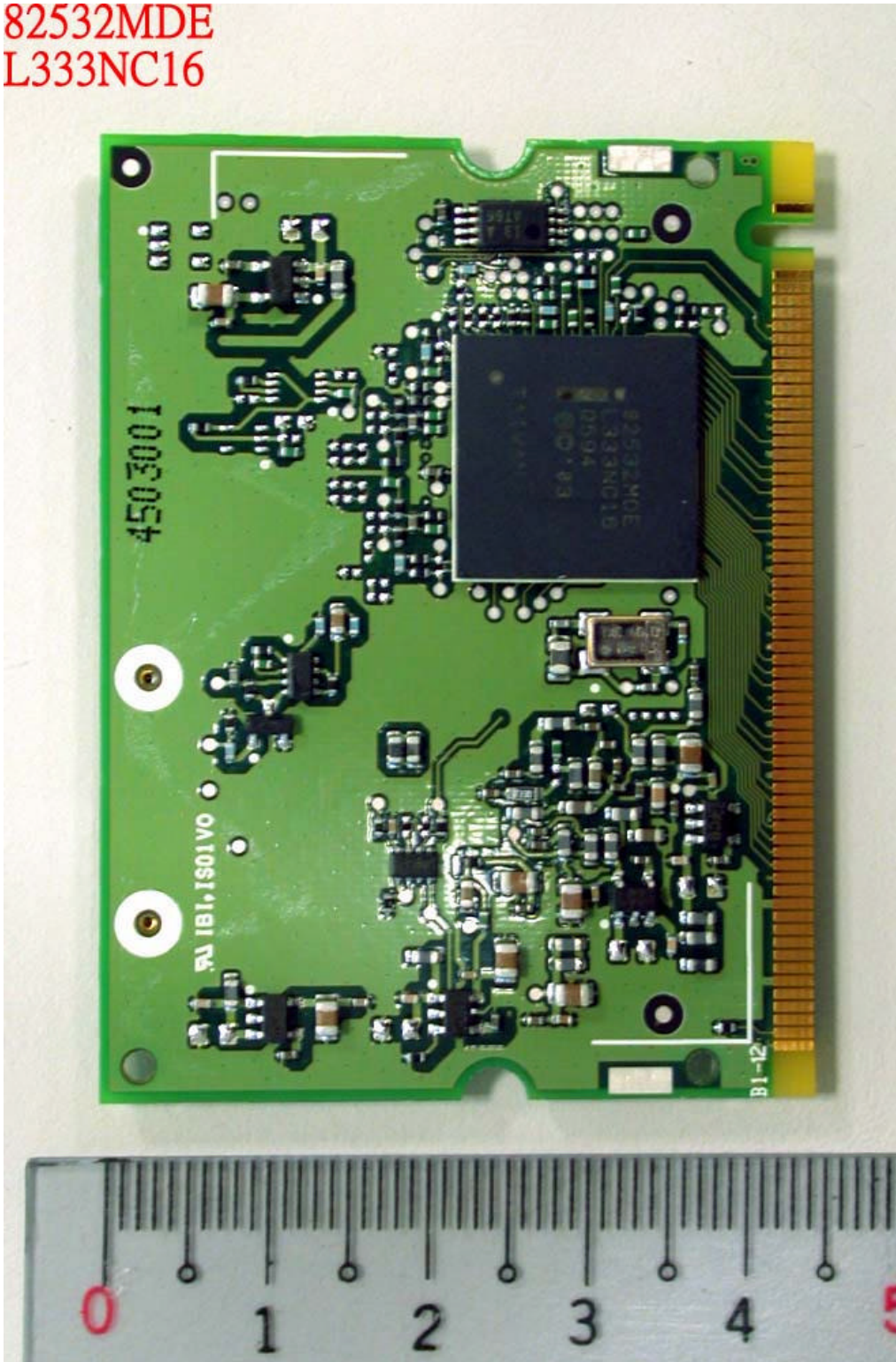
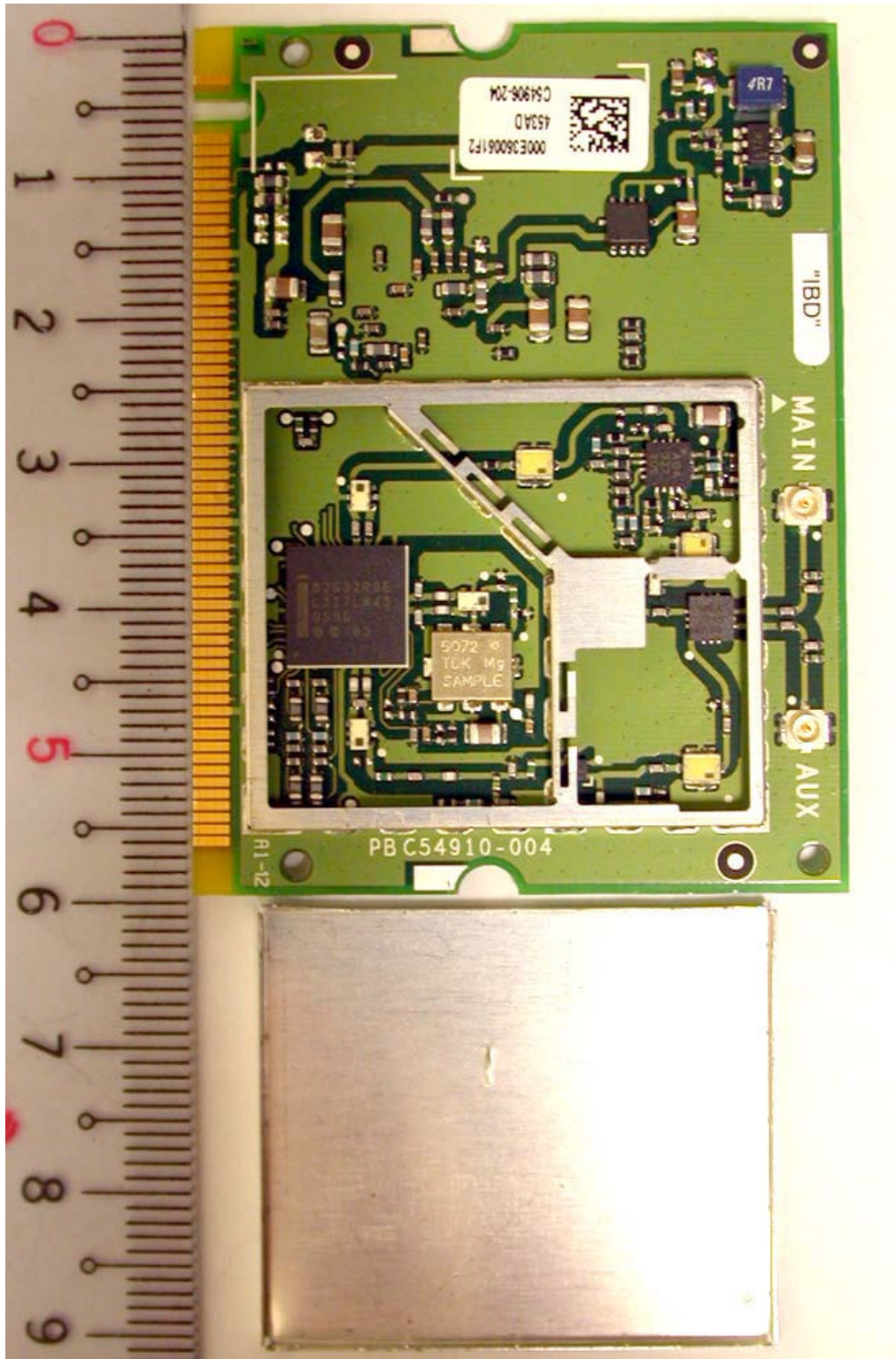


EUT-5

82532MDE  
L333NC16



EUT-6



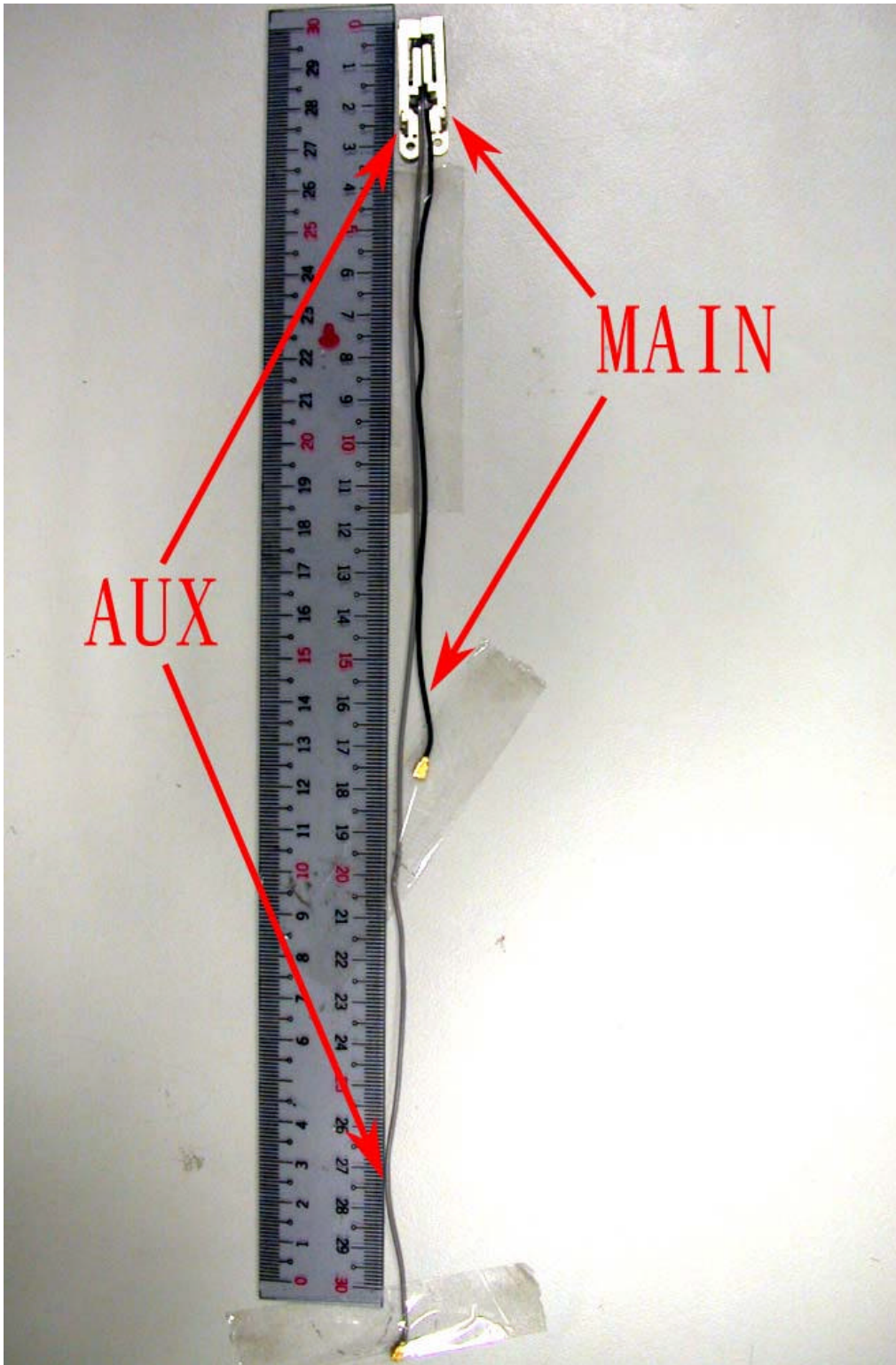
**International Standards Laboratory**

**Report Number: ISL-04LR028P**

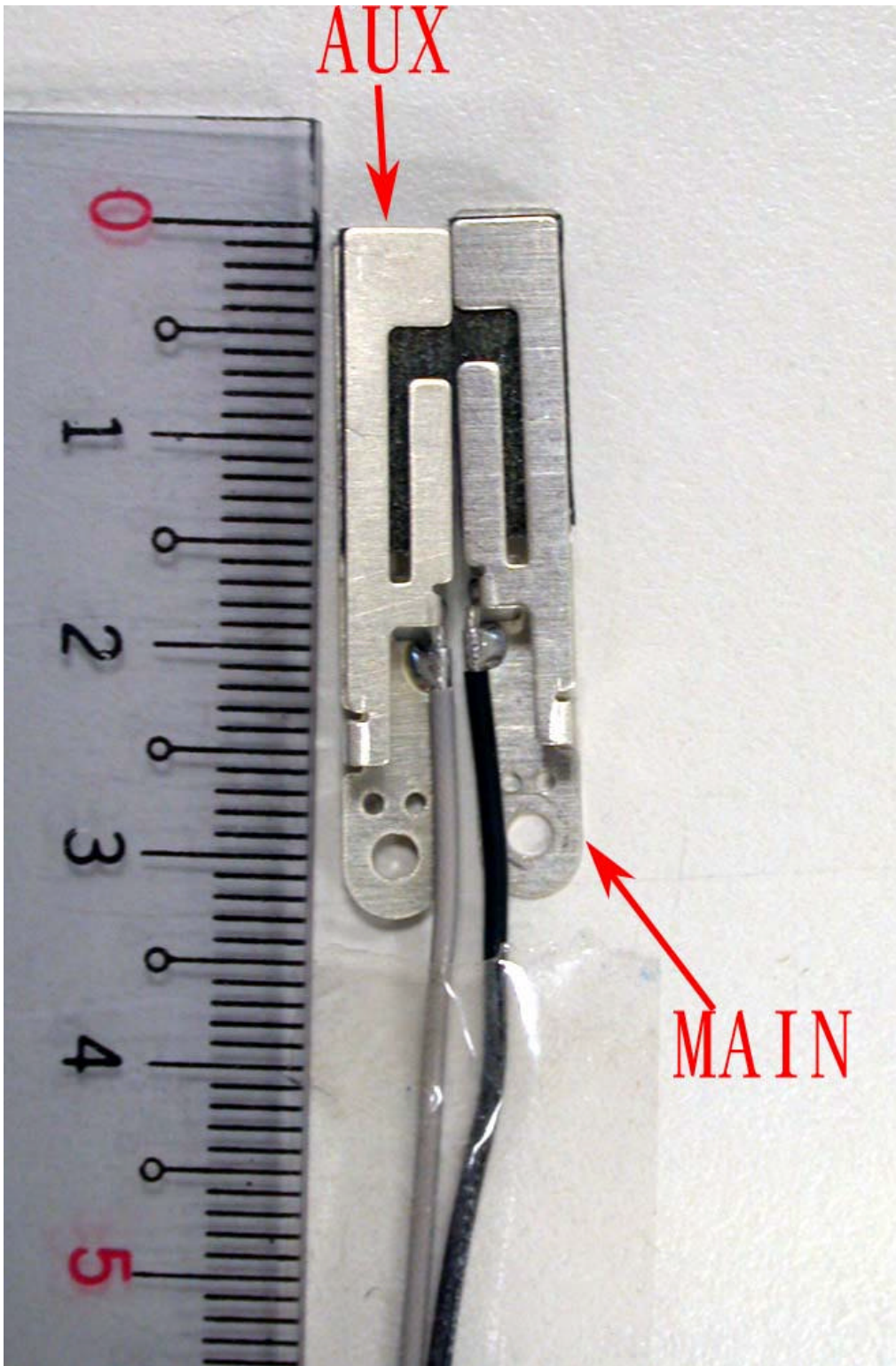
HC LAB:NVLAP:200234-0;VCCI: R-341,C-354;NEMKO:ELA 113a,113c;BSMI:SL2-IN-E-0037;SL2-R1-E-0037;CNLA:1178  
LT LAB:NVLAP:200234-0;VCCI: R-1435,C-1440;NEMKO:ELA 113b,113d;BSMI:SL2-IN-E-0013;CNLA:0997



EUT-7

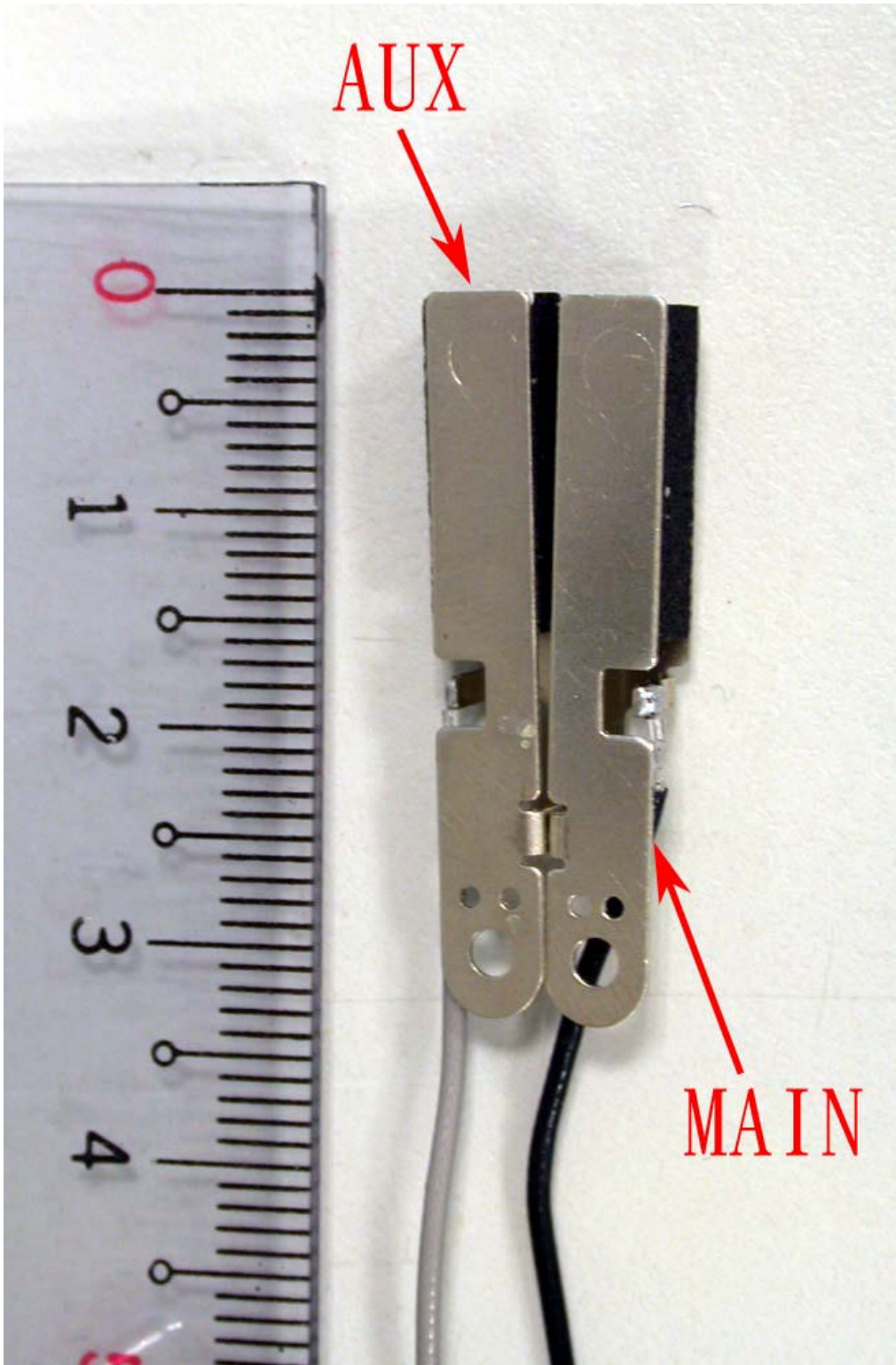


EUT-8

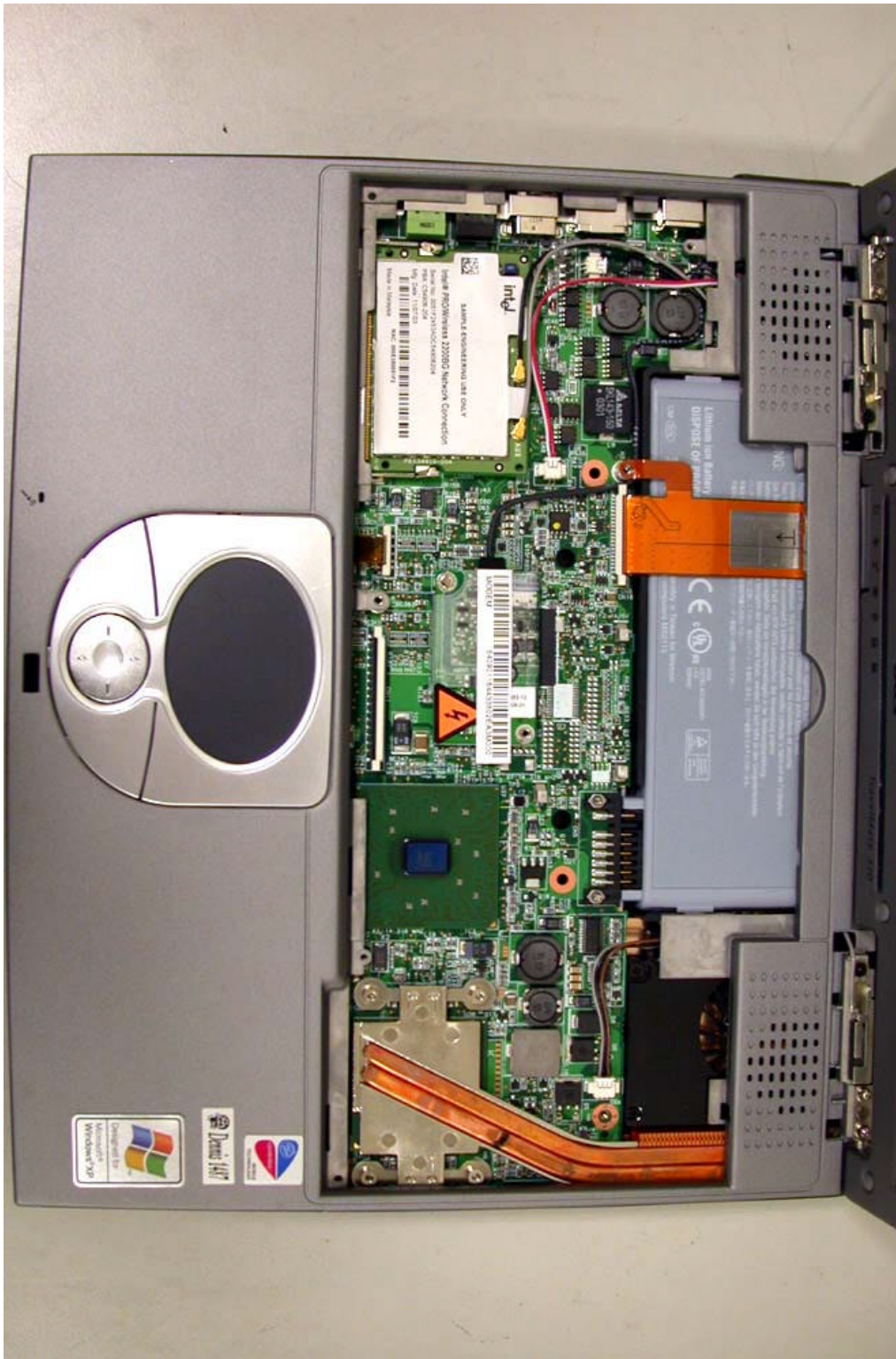




EUT-9



EUT-10



**International Standards Laboratory**

**Report Number: ISL-04LR028P**

**HC LAB:** NVLAP:200234-0; VCCI: R-341, C-354; NEMKO: ELA 113a, 113c; BSMI: SL2-IN-E-0037; SL2-R1-E-0037; CNLA: 1178  
**LT LAB:** NVLAP:200234-0; VCCI: R-1435, C-1440; NEMKO: ELA 113b, 113d; BSMI: SL2-IN-E-0013; CNLA: 0997