

Using system utilities

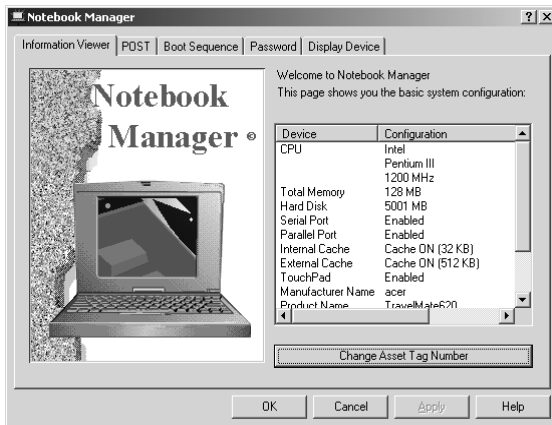
Notebook Manager

The computer has a built-in system setup program called Notebook Manager. The Windows-based Notebook Manager allows you to set passwords, the startup sequence of the drives, and power management settings. It also shows current hardware configurations.

To start the Notebook Manager, press **Fn-F2** or follow these steps:

- 1 Click on **Start, Programs, then Notebook Manager.**
- 2 Select the **Notebook Manager** application to run the program.

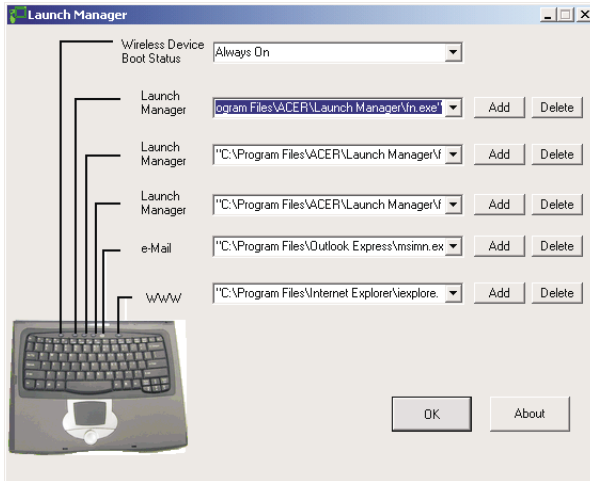
Click on **Help** for more information.



Launch Manager

Launch Manager allows you to set the five launch keys located above the keyboard. See "Launch Keys" on page 18 for the location of the launch key.


You can access the Launch Manager by clicking on **Start, Programs,** and then **Launch Manager** to start the application.




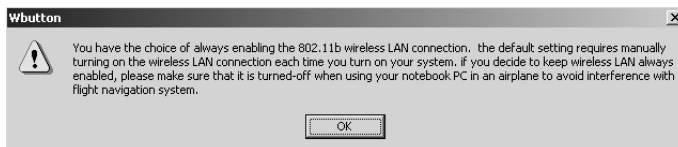
Launch Manager and 802.11b Wireless LAN



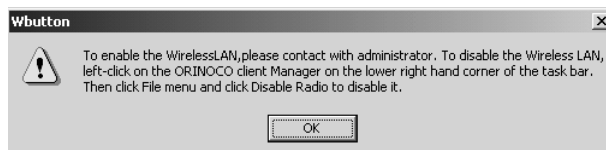
Note: For models with 802.11b Wireless LAN only.

By default, the 802.11b wireless LAN is set to “Always On”. You can manually switch off the 802.11b wireless LAN by pressing the  button. Manually turning off 802.11b wireless LAN does not change this default setting which is re-enabled when you restart your computer. You have to use the Launch Manager to set it to “Always Off”, so that when you turn on your computer, 802.11b wireless LAN will be off.

In Windows 2000 and XP, only the administrator can change the setting in the Launch Manager. For all other users, press the  button, then wait for the following dialog box to display.



Read this note and click on **OK**.



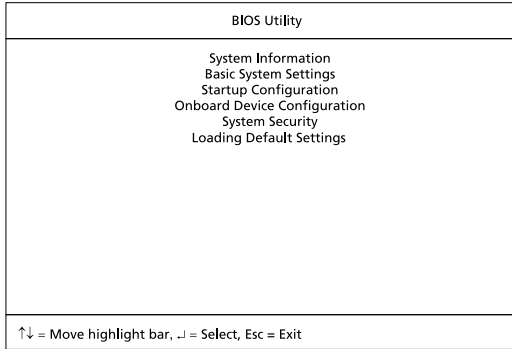
Read the instructions on how to turn off 802.11b wireless LAN and click on **OK**.

BIOS Utility

The BIOS Utility is a hardware configuration program built into your computer's BIOS (basic input/output system).

Your computer is already properly configured and optimized, and you do not need to run this utility. However, if you encounter configuration problems, you may need to run it.

To activate the BIOS Utility, press **F2** during the POST (power-on self-test) while the TravelMate logo is being displayed. See your online guide for more information.



3 Troubleshooting my computer

This chapter instructs you on how to deal with common system problems. Read it before calling a technician if a problem occurs. Solutions to more serious problems require opening up the computer. Do not attempt to open the computer by yourself. Contact your dealer or an authorized service center for assistance.

key link: www.acersupport.com

Frequently-asked questions

The following is a list of possible situations that may arise during the use of your computer. Easy answers and solutions are provided for each one.

I slid the power switch and opened the display, but the computer does not start or boot-up.

Look at the Power indicator:

- If it is not lit, no power is being applied to the computer. Check the following:
 - If you are running on battery power, it may be low and unable to power the computer. Connect the AC adapter to recharge the battery pack.
 - Make sure that the AC adapter is plugged in properly to the computer and to the power outlet.
- If it is lit, check the following:
 - If the Sleep indicator is lit, the computer is in Sleep mode. Press any key or tap on the touchpad to resume.
 - Is a non-bootable (non-system) diskette in the floppy drive? Remove or replace it with a system diskette and press **Ctrl-Alt-Del** to restart the system.
- The operating system files may be damaged or missing. Insert the startup disk you created during Windows setup into the floppy drive and press **Ctrl-Alt-Del** to restart the system. This will diagnose your system and make necessary fixes.

Nothing appears on the screen.

The computer's power management system automatically blanks the screen to save power. Press any key to turn the display back on.

If pressing a key does not turn the display back on, two things might be the cause:

- The brightness level might be too low. Press **Fn→** (increase) and **Fn←** (decrease) to adjust the brightness level.
- The display device might be set to an external monitor. Press the display toggle hot key **Fn-F5** to toggle the display back to the computer.

Image is not full-screen.

The computer display has a native resolution of 1024 x 768 (XGA) for the 13.3" and 14.1" and 1400 x 1050 (SXGA+) for the 15.0". If you set the resolution lower than this, the screen expands to fill the computer display. Right-click on your Windows desktop and select Properties to bring up the **Display Properties** dialog box. Then click on the Settings tab to make sure that the resolution is set to the appropriate resolution. Resolutions lower than the specified resolution are not full-screen on the computer or on an external monitor.

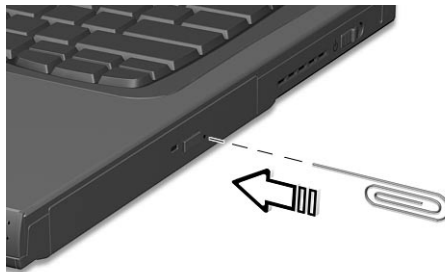
No audio is heard from the computer.

Check the following:

- The volume may be muted. In Windows, look at the volume control (speaker) icon on the taskbar. If it is crossed-out, click on the icon and deselect the Mute option.
- The speakers may be turned off. Press **Fn-F8** to turn the speakers on (this hot key also turns the speakers off).
- The volume level may be too low. In Windows, look at the volume control icon on the taskbar. You can also use the volume control buttons to adjust the volume. See "Hot keys" on page 16 for more detail.
- If headphones, earphones or external speakers are connected to the line-out port on the computer's rear panel, the internal speakers automatically turn off.

I want to eject the optical drive tray without turning on the power. I cannot eject the optical drive tray.

There is a mechanical eject button on the optical drive. Simply insert the tip of a pen or paperclip and push to eject the tray.



The keyboard does not respond.

Try attaching an external keyboard to the USB connector on the rear of the computer. If it works, contact your dealer or an authorized service center as the internal keyboard cable may be loose.

The infrared port does not work.

Check the following:

- Make sure that the infrared ports of the two devices are facing each other (+/- 15 degrees) a maximum of 1 meter apart.
- Make sure there is a clear path between the two infrared ports. Nothing should be blocking the ports.
- Make sure you have the appropriate software running on both devices (for file transfers) or you have the appropriate drivers (for printing to an infrared printer).
- During the POST, press **F2** to access the BIOS Utility and verify that the infrared port is enabled.
- Make sure both devices are IrDA-compliant.

The printer does not work.

Check the following:

- Make sure that the printer is connected to a power outlet and that it is turned on.
- Make sure that the printer cable is connected securely to the computer's parallel port and the corresponding port on the printer.
- During POST, press **F2** to access the BIOS Utility and verify that the parallel port is enabled.

I want to set up my location to use the internal modem.

To properly use your communications software (e.g., HyperTerminal), you need to set up your location:

- 1 Click on **Start, Settings, Control Panel**.
- 2 Double-click on **Modems**.
- 3 Click on **Dialing Properties** and begin setting up your location.

Refer to the Windows manual.

Troubleshooting tips

This notebook computer incorporates an advanced design that delivers onscreen error message reports to help you solve problems.

If the system reports an error message or an error symptom occurs, see "Error messages" on page 63. If the problem cannot be resolved, contact your dealer. See "Requesting service" on page 64.

Error messages

If you receive an error message, note the message and take the corrective action. The following table lists the error messages in alphabetical order together with the recommended course of action.

Error Messages	Corrective Action
CMOS Battery Bad	Contact your dealer or an authorized service center.
CMOS Checksum Error	Contact your dealer or an authorized service center.
Disk Boot Failure	Insert a system (bootable) diskette into the floppy drive (A:), then press Enter to reboot.
Equipment Configuration Error	Press F2 (during POST) to enter the BIOS Utility; then press Esc to exit and reconfigure the computer.
Hard Disk 0 Error	Contact your dealer or an authorized service center.
Hard Disk 0 Extended Type Error	Contact your dealer or an authorized service center.
I/O Parity Error	Contact your dealer or an authorized service center.
Keyboard Error or No Keyboard Connected	Contact your dealer or an authorized service center.
Keyboard Interface Error	Contact your dealer or an authorized service center.
Memory Size Mismatch	Press F2 (during POST) to enter the BIOS Utility; then press Esc to exit and reconfigure the computer.

If you still encounter problems after going through the corrective measures, please contact your dealer or an authorized service center for assistance. Some problems may be solved using the BIOS Utility.

Requesting service

International Traveler's Warranty (ITW)

Your computer is backed by an International Traveler's Warranty (ITW) that gives you security and peace of mind when traveling. Our worldwide network of service centers are there to give you a helping hand.

An ITW passport comes with your computer. This passport contains all you need to know about the ITW program. A list of available, authorized service centers is in this handy booklet. Read this passport thoroughly.

Always have your ITW passport on hand, especially when you travel to receive the benefits from our support centers. Place your proof-of-purchase in the flap located inside the front cover of the ITW passport.

If the country you are traveling in does not have an Acer-authorized ITW service site, you can still get in contact with our offices worldwide.

There are two ways to access Acer for technical support and information:

- Internet service worldwide (www.acersupport.com)
- Technical support numbers in various countries

You can view a list of technical support numbers by following these steps:

- 1 Click on **Start, Settings, Control Panel**.
- 2 Double-click on **System**.
- 3 Click on the **Support Information** button.

Before you call

Please have the following information available when you call Acer for online service, and please be at your computer when you call. With your support, we can reduce the amount of time a call takes and help solve your problems efficiently.

If there are error messages or beeps reported by your computer, write them down as they appear on the screen (or the number and sequence in the case of beeps).

You are required to provide the following information:

Name: _____

Address: _____

Telephone number: _____

Machine and model type: _____

Serial number: _____

Date of purchase: _____

Appendix A
Specifications

This appendix lists the general specifications of your computer.

Microprocessor

- Mobile Intel® Pentium® III Processor-M with 512 KB level 2 cache featuring the new Enhanced Intel® SpeedStep™ technology

Memory

- Main memory expandable to 1 GB
- Dual 144-pin soDIMM sockets
- PC-133 SDRAM (Synchronous Dynamic Random Access Memory) support
- 512 KB Flash ROM BIOS

Data storage

- One high-capacity, Enhanced-IDE hard disk
- One 5.25-inch internal removable optical drive (AcerMedia bay)

Display and video

- Thin-Film Transistor (TFT) liquid crystal display (LCD) displaying 16-bit high color up to 1024 x 786 eXtended Graphics Array (XGA) resolution for 13.3" and 14.1" and 1400 x 1050 Super eXtended Graphics Array + (SXGA+) resolution for 15"
- 4X AGP bus with 3D acceleration
- Simultaneous LCD and CRT display support
- Dual display capability
- S-video for output to a television or display device that supports S-video input
- "Automatic LCD dim" feature that automatically decides the best settings for your display and conserves power

Audio

- 16-bit AC'97 stereo audio with built-in wavetable synthesizer
- Dual speakers and microphone
- Separate audio ports for headphone-out, line-in and microphone-in devices

Keyboard and pointing device

- 84-/85-/88-key Windows keyboard

- Ergonomically-centered touchpad pointing device with 4-way scroll button

I/O ports

- One type II CardBus PC Card slot
- One RJ-45 jack (Ethernet 10/100)
- One RJ-11 phone jack (V.90)
- One DC-in jack
- One parallel port (ECP/EPP)
- One external monitor port
- One speaker/headphone-out jack (3.5mm mini jack)
- One audio line-in jack (3.5mm mini jack)
- Two USB ports
- One FIR port (IrDA)
- One expansion connector
- One Smart Card slot

Weight and dimensions

- 2.67 kg (5.9 lbs) with battery and optical drive
- 323 (W) x 265 (D) x 35 (H) mm

Environment

- Temperature
 - Operating: 5°C ~ 35°C
 - Non-operating: -20°C ~ 65°C
- Humidity (non-condensing)
 - Operating: 20% ~ 80% RH
 - Non-operating: 20% ~ 80% RH

System

- ACPI support
- DMI 2.0-compliant
- Microsoft Windows operating system

Power

- Battery pack
 - 3820-4000 mAH Li-Ion battery pack
 - 1-hour rapid charge/2.5-hour charge-in-use
- AC adapter
 - 70-Watt (Model= ADP-65DB rev.B)
 - Auto sensing 100~240Vac, 47~63Hz

Options

- 128/256/512-MB memory upgrade modules
- Additional Li-Ion battery pack
- Additional AC adapter
- DVD/CD-RW module (includes DVD playback software)
- EasyPort port replicator
- External battery charger
- InviLink 802.11b wireless LAN PC card
- Secondary hard drive
- Floppy drive module (AcerMedia bay)
- USB floppy drive
- DVD-CD/RW combo drive

Appendix B

Notices

This appendix lists the general notices of your computer.

FCC notice

This device has been tested and found to comply with the limits for a Class B digital device pursuant to Part 15 of the FCC Rules. These limits are designed to provide reasonable protection against harmful interference in a residential installation. This device generates, uses, and can radiate radio frequency energy and, if not installed and used in accordance with the instructions, may cause harmful interference to radio communications.

However, there is no guarantee that interference will not occur in a particular installation. If this device does cause harmful interference to radio or television reception, which can be determined by turning the device off and on, the user is encouraged to try to correct the interference by one or more of the following measures:

- Reorient or relocate the receiving antenna
- Increase the separation between the device and receiver
- Connect the device into an outlet on a circuit different from that to which the receiver is connected
- Consult the dealer or an experienced radio/television technician for help

Notice: Shielded cables

All connections to other computing devices must be made using shielded cables to maintain compliance with FCC regulations.

Notice: Peripheral devices

Only peripherals (input/output devices, terminals, printers, etc.) certified to comply with the Class B limits may be attached to this equipment. Operation with non-certified peripherals is likely to result in interference to radio and TV reception.

Caution

Changes or modifications not expressly approved by the manufacturer could void the user's authority, which is granted by the Federal Communications Commission, to operate this computer.

Use conditions

This part complies with Part 15 of the FCC Rules. Operation is subject to the following two conditions: (1) this device may not cause harmful interference, and (2) this device must accept any interference received, including interference that may cause undesired operation.

Notice: Canadian users

This Class B digital apparatus meets all requirements of the Canadian Interference-Causing Equipment Regulations.

Remarque à l'intention des utilisateurs canadiens

Cet appareil numérique de la classe B respecte toutes les exigences du Règlement sur le matériel brouilleur du Canada.

Modem notices

FCC

This equipment complies with Part 68 of the FCC rules. Located on the bottom side of the modem is a label that contains, among other information, the FCC Registration Number and Ringer Equivalence Number (REN) for this equipment. Upon request, you must provide this information to your telephone company.

If your telephone equipment causes harm to the telephone network, the telephone company may discontinue your service temporarily. If possible, they will notify you in advance. But, if advance notice is not practical, you will be notified as soon as possible. You will also be informed of your right to file a complaint with the FCC.

Your telephone company may make changes in its facilities, equipment, operations, or procedures that could affect the proper functioning of your equipment. If they do, you will be notified in advance to give you an opportunity to maintain uninterrupted telephone service.

If this equipment should fail to operate properly, disconnect the equipment from the phone line to determine if it is causing the problem. If the problem is with the equipment, discontinue use and contact your dealer or vendor.

CTR 21

This equipment has been approved [Council Decision 98/482/EC - "CTR 21"] for pan-European single terminal connection to the Public Switched Telephone Network (PSTN). However, due to differences between the individual PSTNs provided in different countries, the approval does not, of itself, give an unconditional assurance of successful operation on every PSTN termination point. In the event of problems, you should contact your equipment supplier in the first instance.

Important safety instructions

Read these instructions carefully. Save these instructions for future reference.

- 1 Follow all warnings and instructions marked on the product.
- 2 Unplug this product from the wall outlet before cleaning. Do not use liquid cleaners or aerosol cleaners. Use a damp cloth for cleaning.
- 3 Do not use this product near water.
- 4 Do not place this product on an unstable cart, stand, or table. The product may fall, causing serious damage to the product.
- 5 Slots and openings in the cabinet and the back or bottom are provided for ventilation; to ensure reliable operation of the product and to protect it from overheating, these openings must not be blocked or covered. The openings should never be blocked by placing the product on a bed, sofa, rug, or other similar surface. This product should never be placed near or over a radiator or heat register, or in a built-in installation unless proper ventilation is provided.
- 6 This product should be operated from the type of power indicated on the marking label. If you are not sure of the type of power available, consult your dealer or local power company.
- 7 Do not allow anything to rest on the power cord. Do not locate this product where persons will walk on the cord.
- 8 If an extension cord is used with this product, make sure that the total ampere rating of the equipment plugged into the extension cord does not exceed the extension cord ampere rating. Also, make sure that the total rating of all products plugged into the wall outlet does not exceed the fuse rating.
- 9 Never push objects of any kind into this product through cabinet slots as they may touch dangerous voltage points or short out parts that could result in a fire or electric shock. Never spill liquid of any kind on the product.
- 10 Do not attempt to service this product yourself, as opening or removing covers may expose you to dangerous voltage points or other risks. Refer all servicing to qualified service personnel.
- 11 Unplug this product from the wall outlet and refer servicing to qualified service personnel under the following conditions:
 - a When the power cord or plug is damaged or frayed
 - b If liquid has been spilled into the product
 - c If the product has been exposed to rain or water
 - d If the product does not operate normally when the operating instructions are followed. Adjust only those controls that are covered by the operating instructions since improper adjustment of other

- controls may result in damage and will often require extensive work by a qualified technician to restore the product to normal condition.
- e If the product has been dropped or the cabinet has been damaged
 - f If the product exhibits a distinct change in performance, indicating a need for service.
- 12 Replace the battery with the same type as the product's battery we recommend. Use of another battery may present a risk of fire or explosion. Refer battery replacement to a qualified serviceman.
 - 13 **Warning!** Batteries may explode if not handled properly. Do not disassemble or dispose of them in fire. Keep them away from children and dispose of used batteries promptly.
 - 14 Use only the proper type of power supply cord set (provided in your accessories box) for this unit. It should be a detachable type: UL listed/CSA certified, type SPT-2, rated 7A 125V minimum, VDE approved or its equivalent. Maximum length is 15 feet (4.6 meters).

Laser compliance statement

The CD or DVD drive used with this computer is a laser product. The CD or DVD drive's classification label (shown below) is located on the drive.

CLASS 1 LASER PRODUCT

CAUTION: INVISIBLE LASER RADIATION WHEN OPEN. AVOID EXPOSURE TO BEAM.

APPAREIL A LASER DE CLASSE 1 PRODUIT

LASERATTENTION: RADIATION DU FAISCEAU LASER INVISIBLE EN CAS D'OUVERTURE. EVITER TOUTE EXPOSITION AUX RAYONS.

LUOKAN 1 LASERLAITE LASER KLASSE 1

VORSICHT: UNSICHTBARE LASERSTRAHLUNG, WENN ABDECKUNG GEÖFFNET NICHT DEM STRAHL AUSSETZEN

PRODUCTO LÁSER DE LA CLASE I

ADVERTENCIA: RADIACIÓN LÁSER INVISIBLE AL SER ABIERTO. EVITE EXPONERSE A LOS RAYOS.

ADVARSEL: LASERSTRÅLING VEDÅBNING SE IKKE IND I STRÅLEN.

VARO! LAVATTAESSA OLET ALTTINA LASERSÄTEILYLLE.

WARNING: LASERSTRÅLNING NÅR DENNA DEL ÅR ÖPPNAD ÅLÅ TUIJOTA SÄTEESEENSTIRRA EJ IN I STRÅLEN

WARNING: LASERSTRÅLNING NAR DENNA DEL ÅR ÖPPNADSTIRRA EJ IN I STRÅLEN

ADVARSEL: LASERSTRÅLING NAR DEKSEL ÅPNESSTIRR IKKE INN I STRÅLEN

Lithium battery statement

CAUTION

Danger of explosion if battery is incorrectly replaced. Replace only with the same or equivalent type recommended by the manufacturer. Discard used batteries according to the manufacturer's instructions.

ADVARSEL!

Lithiumbatteri - Eksplosionsfare ved fejlagtig håndtering. Udskiftning må kun ske med batteri af samme fabrikat og type. Léver det brugte batteri tilbage til leverandøren.

ADVARSEL

Eksplosjonsfare ved feilaktig skifte av batteri. Benytt samme batteritype eller en tilsvarende type anbefalt av apparatfabrikanten. Brukte batterier kasseres i henhold til fabrikantens instruksjoner.

WARNING

Explosionsfara vid felaktigt batteribyte. Använd samma batterityp eller en ekvivalent typ som rekommenderas av apparattillverkaren. Kassera använt batteri enligt fabrikantens instruktion.

VAROITUS

Päristö voi räjähtää, jos se on virheellisesti asennettu. Vaihda paristö ainoastaan laitevalmistajan suositttelemaan tyyppiin. Hävitä käytetty paristö valmistajan ohjeiden mukaisesti.

VORSICHT!

Explosionsgefahr bei unsachgemäßen Austausch der Batterie Ersatz nur durch denselben oder einem vom Hersteller empfohlenem ähnlichen Typ. Entsorgung gebrauchter Batterien nach Angaben des Herstellers.

Year 2000 compliance statement

The TravelMate 620 series notebook computer carries the "Hardware NSTL Tested Year 2000 Compliant" logo, which certifies that this model has been tested by NSTL using the YMark2000 test, and has been found to meet NSTL's standards for Year 2000 hardware compliance.



For more details, check the Acer Year 2000 Resource Center Web site (global.acer.com/service/pcy2000.html)

Macrovision copyright protection notice

This product incorporates copyright protection technology that is protected by method claims of certain U.S. patents and other intellectual property rights owned by Macrovision Corporation and other rights owners. Use of this copyright protection technology must be authorized by Macrovision Corporation, and is intended for home and other limited viewing uses only unless otherwise authorized by Macrovision Corporation. Reverse engineering or disassembly is prohibited.

Apparatus Claims of U.S. Patent Nos. 4,631,603, 4,577,216, 4,819,098, and 4,907,093 licensed for limited viewing uses only.

Index

A

- AC adapter
 - caring for v
- AcerMedia drive 24
- audio 27
 - adjusting the volume 27
 - troubleshooting 60

B

- battery pack
 - caring for vi
 - charging indicator 12
- BIOS utility 55
- brightness
 - hotkeys 18

C

- caps lock 14
 - on indicator 13
- care
 - AC adapter v
 - battery pack vi
 - computer v
- CD-ROM
 - ejecting 25
 - ejecting manually 60
 - troubleshooting 60
- cleaning
 - computer vi
- computer
 - bringing to meetings 30
 - caring for v
 - cleaning vi
 - disconnecting 29
 - features 3, 10
 - indicators 12
 - keyboards 14
 - moving around 29
 - on indicator 12
 - performance 10
 - security 34
 - setting up a home office 31
 - taking home 30
 - traveling internationally 32

- traveling on local trips 32
- troubleshooting 58
- turning off iv
- Wireless Communication indicator 12

- connections
 - network 46
- connectivity options
 - port expansion devices 50

D

- display
 - hotkeys 17
 - troubleshooting 59, 60
- DVD 25
- DVD movies
 - playing 25

E

- email checking function 21
- error messages 63
- Euro 18

F

- FAQ. See frequently-asked questions
- frequently-asked questions 59
- front view 3

H

- hard disk 24
- help
 - online manual iv
 - online services 64
- Hibernation mode
 - hotkey 17
- hotkeys 16

I

- IEEE 1394 port 48
- indicator lights 12
- infrared 46
- ITW. See warranty

K

- keyboard 14
 - embedded numeric keypad 15
 - hotkeys 16
 - lock keys 14
 - troubleshooting 61
 - Windows keys 16

L

LEDs 12

M

media access

on indicator 12

memory

installing 50– 51

upgrading 50

messages

error 63

modem 45

N

network 46

Notebook Manager 53

hotkey 17

notice

DVD copyright protection 80

year 2000 compliance 79

num lock 14

on indicator 13

numeric keypad

embedded 15

num lock 15

O

online services 64

options

memory upgrade 50

P

password 40

types 40

PC Card 48

ejecting 49

inserting 49

ports 45

POST (power-on self-test) 56

printer

troubleshooting 61

problems 59

CD-ROM 60

display 59, 60

keyboard 61

printer 61

startup 59

troubleshooting 58

Q

questions

setting location for modem use

61

S

safety

CD-ROM 78

FCC notice 75

general instructions 76

modem notices 76

scroll lock 14

security

keylock 34

passwords 40

smart card 34

service

when to call vi

SmartCard 34

PlatinumKey 35

PlatinumPAS 34

PlatinumSecure 34

PlatinumSecure options 37

speakers

hotkey 18

troubleshooting 60

specifications 68

Standby mode

hotkey 17

status indicator 12

status indicators 12

storage 24

AcerMedia drive 24

hard disk 24

support

information 64

T

touchpad 22

hotkey 18

using 22– 23

travel

international flights 32

local trips 32

troubleshooting 58

tips 62

U

universal serial bus 47

V

view
 front 4
 left 4
 rear 6
 right 5
volume

adjusting 27

W

warranty
 International Traveler's Warrant-
 ty 64
Windows keys 16

