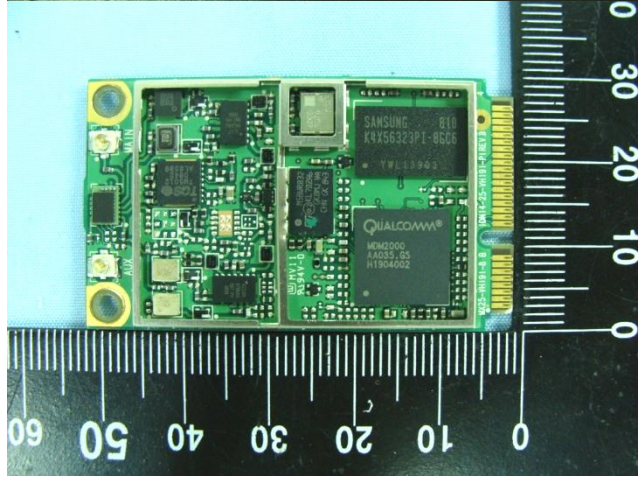
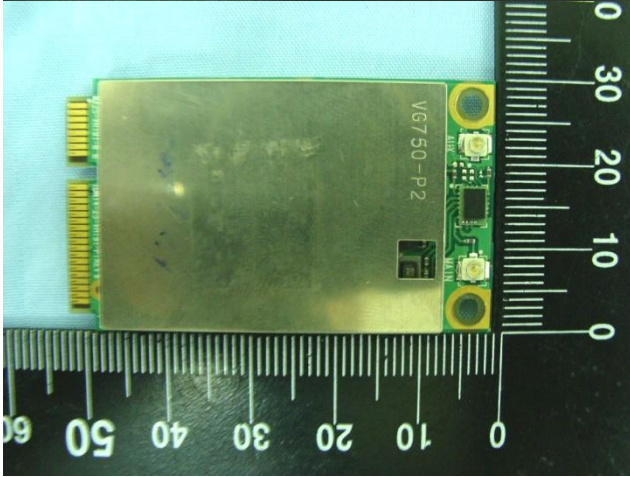
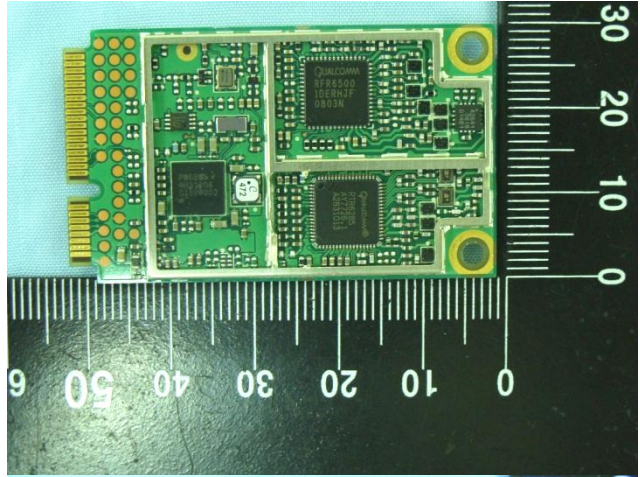
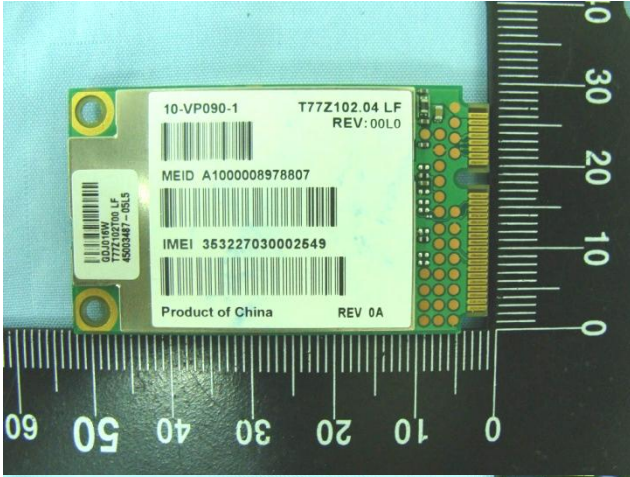


Appendix D - Product Photos

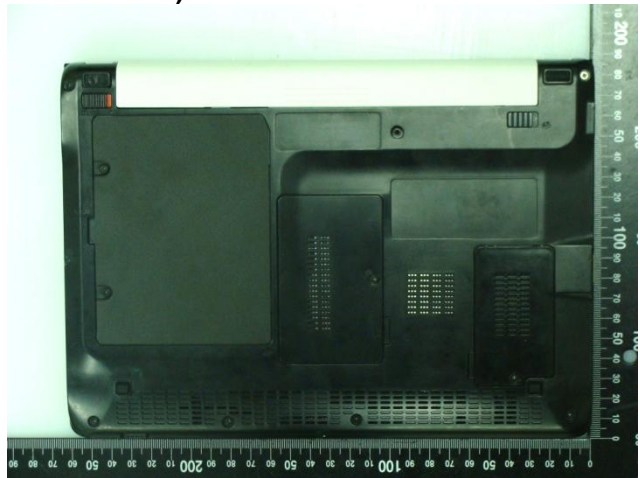
DUT:

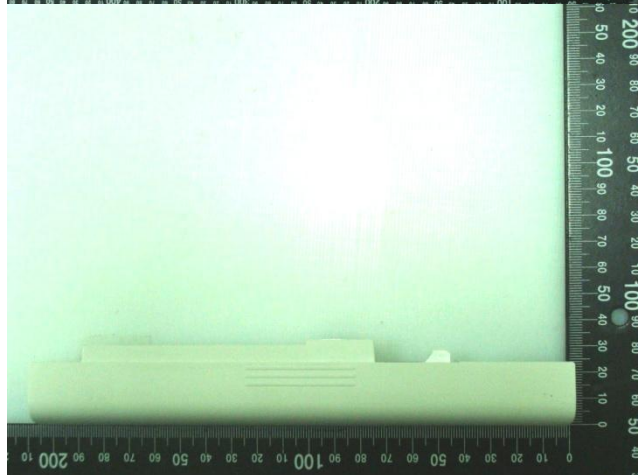
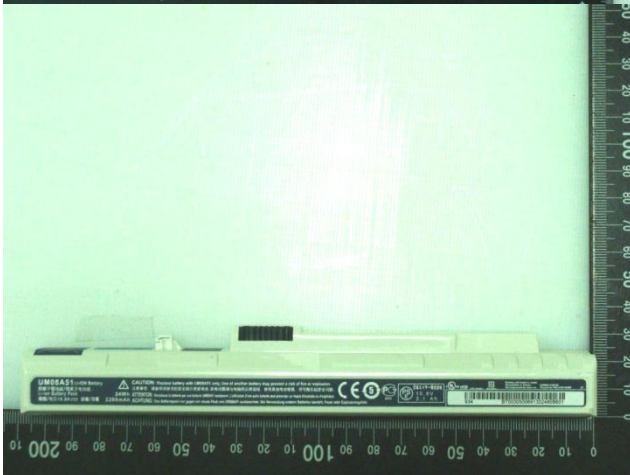
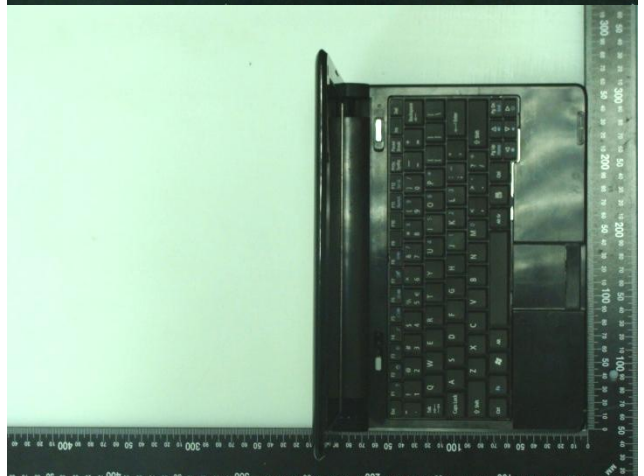
(Brand name: Acer, Gateway, PackardBell / Model name: Gobi2000)



Host notebook computer:

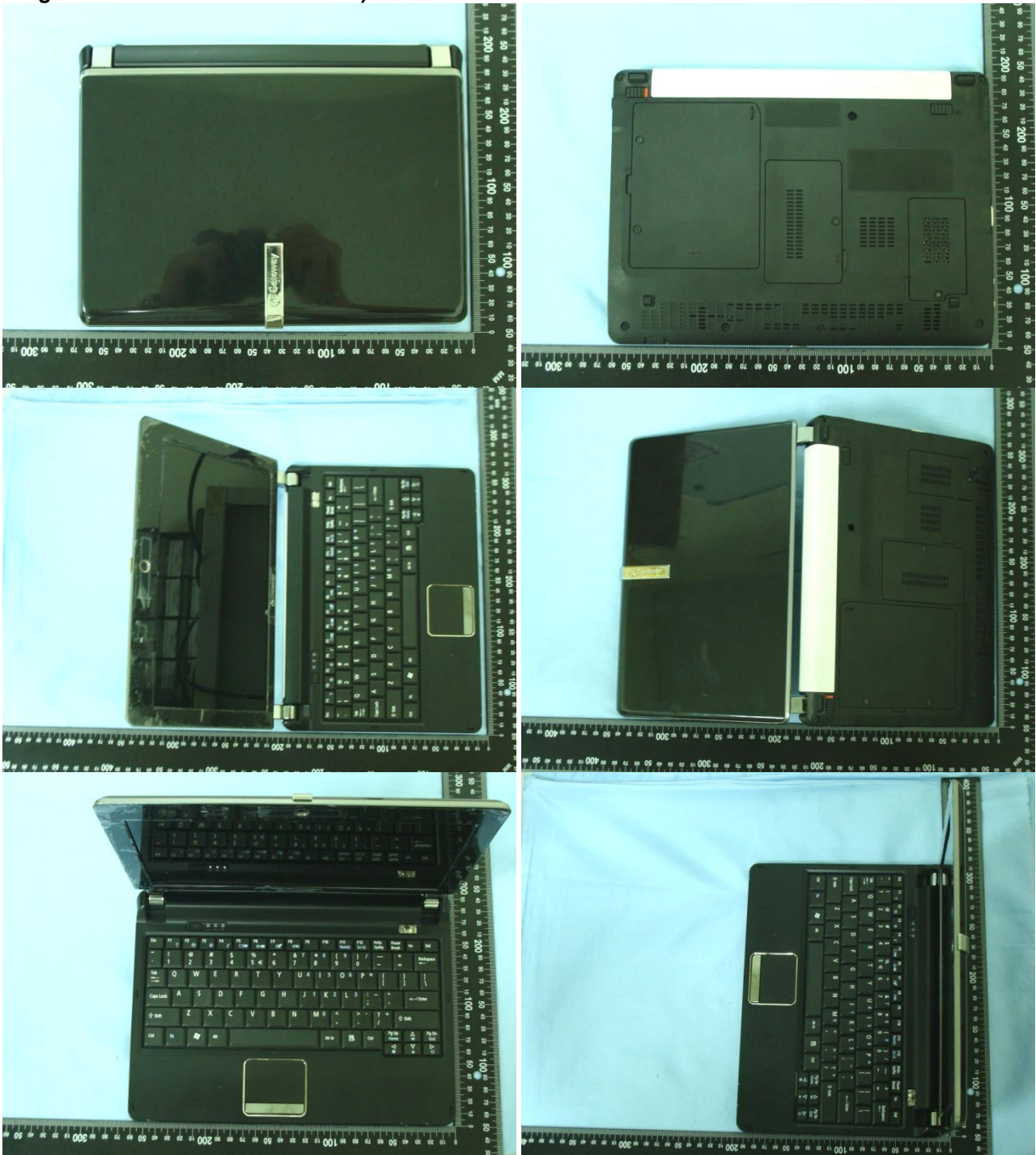
(Brand name: Acer, Gateway, PackardBell / Model name: KAV60 / Marketing name: Aspire one, AOD210, AOD250, LT20 is integrated with GSM/WCDMA antenna)

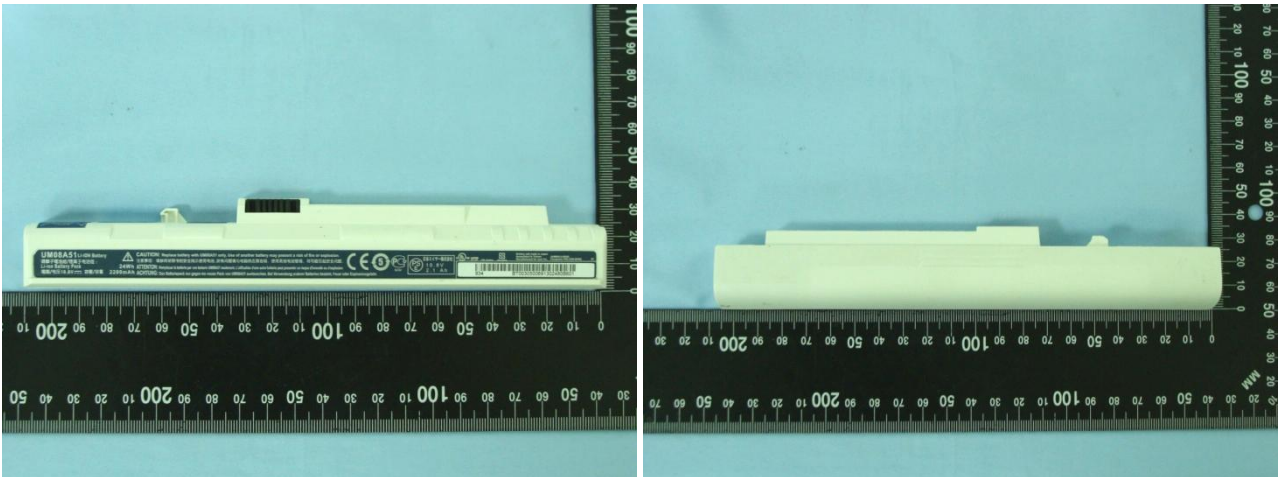




Host notebook computer:

(Brand name: Acer, Gateway, PackardBell / Model name: KAV80 / Marketing name: dot s, dot sr is integrated with CDMA2000 antenna)





Antenna Distance :

Brand name: Acer, Gateway, PackardBell / Model name: KAV60 / Marketing name: Aspire one, AOD210, AOD250, LT20 is integrated with GSM/WCDMA antenna



Brand name: Acer, Gateway, PackardBell / Model name: KAV80 / Marketing name: dot s, dot sr is integrated with CDMA2000 antenna



Appendix E - Test Setup Photos



Rear View - Bottom of DUT with Phantom 0cm Gap
(KAV60 with GSM/WCDMA Antenna)



Side View - Bottom of DUT with Phantom 0cm Gap
(KAV60 with GSM/WCDMA Antenna)



Rear View - Bottom of DUT with Phantom 0cm Gap
(KAV80 with CDMA2000 Antenna)



Side View - Bottom of DUT with Phantom 0cm Gap
(KAV80 with CDMA2000 Antenna)