

FCC SAR Test Report

APPLICANT : Acer Incorporated
EQUIPMENT : Smart HandHeld
BRAND NAME : Acer
MODEL NAME : T012, TM012
MARKETING NAME : Liquid Z320, Liquid M320
FCC ID : HLZDMZ320
STANDARD : FCC 47 CFR Part 2 (2.1093)
ANSI/IEEE C95.1-1992
IEEE 1528-2013

We, SPORTON INTERNATIONAL (XI'AN) INC., would like to declare that the tested sample has been evaluated in accordance with the procedures and had been in compliance with the applicable technical standards.

The test results in this report apply exclusively to the tested model / sample. Without written approval of SPORTON INTERNATIONAL (XI'AN) INC., the test report shall not be reproduced except in full.



Prepared by: Mark Qu / Manager



Approved by: Jones Tsai / Manager



SPORTON INTERNATIONAL (XI'AN) INC.

1F, Building A3, No. 39 Chuangye Rd., Xi'an Hi-tech Zone, Shanxi Province, P. R. China



Table of Contents

1. Statement of Compliance	4
2. Administration Data	5
3. Guidance Standard	5
4. Equipment Under Test (EUT) Information	6
4.1 General Information	6
5. RF Exposure Limits.....	7
5.1 Uncontrolled Environment.....	7
5.2 Controlled Environment.....	7
6. Specific Absorption Rate (SAR).....	8
6.1 Introduction	8
6.2 SAR Definition.....	8
7. System Description and Setup	9
8. Measurement Procedures	10
8.1 Spatial Peak SAR Evaluation.....	10
8.2 Power Reference Measurement.....	11
8.3 Area Scan	11
8.4 Zoom Scan.....	12
8.5 Volume Scan Procedures.....	12
8.6 Power Drift Monitoring.....	12
9. Test Equipment List	13
10. System Verification	14
10.1 Tissue Verification	14
10.2 System Performance Check Results.....	15
11. RF Exposure Positions	16
11.1 Ear and handset reference point	16
11.2 Definition of the cheek position.....	17
11.3 Definition of the tilt position.....	18
11.4 Body Worn Accessory	19
11.5 Wireless Router.....	19
12. Conducted RF Output Power (Unit: dBm).....	20
13. Bluetooth Exclusions Applied	26
14. Antenna Location	27
15. SAR Test Results	28
15.1 Head SAR	29
15.2 Hotspot SAR	31
15.3 Body Worn Accessory SAR.....	33
15.4 Repeated SAR Measurement	35
16. Simultaneous Transmission Analysis	36
16.1 Head Exposure Conditions	37
16.2 Hotspot Exposure Conditions.....	38
16.3 Body-Worn Accessory Exposure Conditions	39
17. Uncertainty Assessment	40
18. References	42
Appendix A. Plots of System Performance Check	
Appendix B. Plots of High SAR Measurement	
Appendix C. DASY Calibration Certificate	
Appendix D. Test Setup Photos	

Revision History

REPORT NO.	VERSION	DESCRIPTION	ISSUED DATE
FA562418	Rev. 01	Initial issue of report	Nov. 17, 2015

1. Statement of Compliance

The maximum results of Specific Absorption Rate (SAR) found during testing for **Acer Incorporated, Smart HandHeld, T012, TM012**, are as follows.

Equipment Class	Wireless Operated	Highest SAR Summary			
		Head (Separation 0mm)	Body-worn (Separation 10mm)	Wireless Router (Separation 10mm)	Highest Simultaneous Transmission 1g SAR (W/kg)
		1g SAR (W/kg)			
Licensed	WWAN	0.49	1.31	1.29	1.44
DTS	2.4GHz WLAN	0.54	0.13	0.13	1.44
DSS	2.4GHz Bluetooth		<0.10		1.35
Date of Testing:		2015/09/01 ~ 2015/11/09			

This device is in compliance with Specific Absorption Rate (SAR) for general population/uncontrolled exposure limits (1.6 W/kg) specified in FCC 47 CFR part 2 (2.1093) and ANSI/IEEE C95.1-1992, and had been tested in accordance with the measurement methods and procedures specified in IEEE 1528-2013 and FCC KDB publications.

2. Administration Data

Testing Laboratory	
Test Site	SPORTON INTERNATIONAL (XI'AN) INC.
Test Site Location	1F, Building A3, No. 39 Chuangye Rd., Xi'an Hi-tech Zone, Shanxi Province, P. R. China TEL: +86-029-8860-8767 FAX: +86-029-8860-8791

Applicant	
Company Name	Acer Incorporated
Address	8F., No. 88, Sec. 1, Xintai 5th Rd., Xizhi Dist., New Taipei City 22181, Taiwan (R.O.C)

Manufacturer	
Company Name	Shanghai HuaQin Telecom Technology CO., LTD
Address	Building 1, No.399, Keyuan Road, High-tech Park PudongZhangjiang, Shanghai, China

3. Guidance Standard

The Specific Absorption Rate (SAR) testing specification, method, and procedure for this device is in accordance with the following standards:

- FCC 47 CFR Part 2 (2.1093)
- ANSI/IEEE C95.1-1992
- IEEE 1528-2013
- FCC KDB 865664 D01 SAR Measurement 100 MHz to 6 GHz v01r04
- FCC KDB 865664 D02 SAR Reporting v01r02
- FCC KDB 447498 D01 General RF Exposure Guidance v06
- FCC KDB 648474 D04 SAR Evaluation Considerations for Wireless Handsets v01r03
- FCC KDB 248227 D01 802.11 Wi-Fi SAR v02r02
- FCC KDB 941225 D01 3G SAR Procedures v03r01
- FCC KDB 941225 D06 Hotspot Mode SAR v02r01

4. Equipment Under Test (EUT) Information

4.1 General Information

Product Feature & Specification	
Equipment Name	Smart HandHeld
Brand Name	Acer
Model Name	T012, TM012
Marketing Name	Liquid Z320, Liquid M320
FCC ID	HLZDMZ320
IMEI Code	SIM1:354636060008664 SIM2:354636060011148
Wireless Technology and Frequency Range	GSM850: 824.2 MHz ~ 848.8 MHz GSM1900: 1850.2 MHz ~ 1909.8 MHz WCDMA Band II: 1852.4 MHz ~ 1907.6 MHz WCDMA Band IV: 1712.4 MHz ~ 1752.6 MHz WCDMA Band V: 826.4 MHz ~ 846.6 MHz WLAN 2.4GHz Band: 2412 MHz ~ 2462 MHz Bluetooth: 2402 MHz ~ 2480 MHz
Mode	<ul style="list-style-type: none"> · GSM/GPRS/EGPRS · RMC/AMR 12.2Kbps · HSDPA · HSUPA · HSPA+ (16QAM uplink is not supported) · 802.11b/g/n/ HT20 · Bluetooth v3.0+EDR, Bluetooth v4.0-LE
GSM / (E)GPRS Transfer mode	Class B – EUT cannot support Packet Switched and Circuit Switched Network simultaneously but can automatically switch between Packet and Circuit Switched Network.
EUT Stage	Identical Prototype
Remark: <ol style="list-style-type: none"> 1. This device 2.4GHz supports hotspot operation and 802.11n-HT40 is not supported in 2.4GHz WLAN. 2. This device supported VoIP in GPRS, EGPRS, and WCDMA (e.g. 3rd party VoIP). 3. This device supports GRPS/EGPRS mode up to multi-slot class 12. 4. This device does not support DTM operation. 5. The dual SIM card mobile has 2 SIM slots and supports dual SIM dual Standby. The WWAN radio transmission will be enabled by either one SIM at a time (Single active). After pre-scan two SIM cards power, we found test result of the SIM1 was the worse, so we chose dual SIM1 card to perform all tests. 	

5. RF Exposure Limits

5.1 Uncontrolled Environment

Uncontrolled Environments are defined as locations where there is the exposure of individuals who have no knowledge or control of their exposure. The general population/uncontrolled exposure limits are applicable to situations in which the general public may be exposed or in which persons who are exposed as a consequence of their employment may not be made fully aware of the potential for exposure or cannot exercise control over their exposure. Members of the general public would come under this category when exposure is not employment-related; for example, in the case of a wireless transmitter that exposes persons in its vicinity.

5.2 Controlled Environment

Controlled Environments are defined as locations where there is exposure that may be incurred by persons who are aware of the potential for exposure, (i.e. as a result of employment or occupation). In general, occupational/controlled exposure limits are applicable to situations in which persons are exposed as a consequence of their employment, who have been made fully aware of the potential for exposure and can exercise control over their exposure. The exposure category is also applicable when the exposure is of a transient nature due to incidental passage through a location where the exposure levels may be higher than the general population/uncontrolled limits, but the exposed person is fully aware of the potential for exposure and can exercise control over his or her exposure by leaving the area or by some other appropriate means.

Limits for Occupational/Controlled Exposure (W/kg)

Whole-Body	Partial-Body	Hands, Wrists, Feet and Ankles
0.4	8.0	20.0

Limits for General Population/Uncontrolled Exposure (W/kg)

Whole-Body	Partial-Body	Hands, Wrists, Feet and Ankles
0.08	1.6	4.0

1. Whole-Body SAR is averaged over the entire body, partial-body SAR is averaged over any 1gram of tissue defined as a tissue volume in the shape of a cube. SAR for hands, wrists, feet and ankles is averaged over any 10 grams of tissue defined as a tissue volume in the shape of a cube.

6. Specific Absorption Rate (SAR)

6.1 Introduction

SAR is related to the rate at which energy is absorbed per unit mass in an object exposed to a radio field. The SAR distribution in a biological body is complicated and is usually carried out by experimental techniques or numerical modeling. The standard recommends limits for two tiers of groups, occupational/controlled and general population/uncontrolled, based on a person's awareness and ability to exercise control over his or her exposure. In general, occupational/controlled exposure limits are higher than the limits for general population/uncontrolled.

6.2 SAR Definition

The SAR definition is the time derivative (rate) of the incremental energy (dW) absorbed by (dissipated in) an incremental mass (dm) contained in a volume element (dv) of a given density (ρ). The equation description is as below:

$$SAR = \frac{d}{dt} \left(\frac{dW}{dm} \right) = \frac{d}{dt} \left(\frac{dW}{\rho dv} \right)$$

SAR is expressed in units of Watts per kilogram (W/kg)

$$SAR = \frac{\sigma |E|^2}{\rho}$$

Where: σ is the conductivity of the tissue, ρ is the mass density of the tissue and E is the RMS electrical field strength.

7. System Description and Setup

The DASY system used for performing compliance tests consists of the following items:



- A standard high precision 6-axis robot with controller, teach pendant and software. An arm extension for accommodating the data acquisition electronics (DAE).
- An isotropic Field probe optimized and calibrated for the targeted measurement.
- A data acquisition electronics (DAE) which performs the signal amplification, signal multiplexing, AD-conversion, offset measurements, mechanical surface detection, collision detection, etc. The unit is battery powered with standard or rechargeable batteries. The signal is optically transmitted to the EOC.
- The Electro-optical converter (EOC) performs the conversion from optical to electrical signals for the digital communication to the DAE. To use optical surface detection, a special version of the EOC is required. The EOC signal is transmitted to the measurement server.
- The function of the measurement server is to perform the time critical tasks such as signal filtering, control of the robot operation and fast movement interrupts.
- The Light Beam used is for probe alignment. This improves the (absolute) accuracy of the probe positioning.
- A computer running WinXP or Win7 and the DASY5 software.
- Remote control and teach pendant as well as additional circuitry for robot safety such as warning lamps, etc.
- The phantom, the device holder and other accessories according to the targeted measurement.

8. Measurement Procedures

The measurement procedures are as follows:

<Conducted power measurement>

- (a) For WWAN power measurement, use base station simulator to configure EUT WWAN transmission in conducted connection with RF cable, at maximum power in each supported wireless interface and frequency band.
- (b) Read the WWAN RF power level from the base station simulator.
- (c) For WLAN/BT power measurement, use engineering software to configure EUT WLAN/BT continuously transmission, at maximum RF power in each supported wireless interface and frequency band
- (d) Connect EUT RF port through RF cable to the power meter, and measure WLAN/BT output power

<SAR measurement>

- (a) Use base station simulator to configure EUT WWAN transmission in radiated connection, and engineering software to configure EUT WLAN/BT continuously transmission, at maximum RF power, in the highest power channel.
- (b) Place the EUT in the positions as Appendix D demonstrates.
- (c) Set scan area, grid size and other setting on the DASY software.
- (d) Measure SAR results for the highest power channel on each testing position.
- (e) Find out the largest SAR result on these testing positions of each band
- (f) Measure SAR results for other channels in worst SAR testing position if the reported SAR of highest power channel is larger than 0.8 W/kg

According to the test standard, the recommended procedure for assessing the peak spatial-average SAR value consists of the following steps:

- (a) Power reference measurement
- (b) Area scan
- (c) Zoom scan
- (d) Power drift measurement

8.1 Spatial Peak SAR Evaluation

The procedure for spatial peak SAR evaluation has been implemented according to the test standard. It can be conducted for 1g and 10g, as well as for user-specific masses. The DASY software includes all numerical procedures necessary to evaluate the spatial peak SAR value.

The base for the evaluation is a "cube" measurement. The measured volume must include the 1g and 10g cubes with the highest averaged SAR values. For that purpose, the center of the measured volume is aligned to the interpolated peak SAR value of a previously performed area scan.

The entire evaluation of the spatial peak values is performed within the post-processing engine (SEMCAD). The system always gives the maximum values for the 1g and 10g cubes. The algorithm to find the cube with highest averaged SAR is divided into the following stages:

- (a) Extraction of the measured data (grid and values) from the Zoom Scan
- (b) Calculation of the SAR value at every measurement point based on all stored data (A/D values and measurement parameters)
- (c) Generation of a high-resolution mesh within the measured volume
- (d) Interpolation of all measured values from the measurement grid to the high-resolution grid
- (e) Extrapolation of the entire 3-D field distribution to the phantom surface over the distance from sensor to surface
- (f) Calculation of the averaged SAR within masses of 1g and 10g

8.2 Power Reference Measurement

The Power Reference Measurement and Power Drift Measurements are for monitoring the power drift of the device under test in the batch process. The minimum distance of probe sensors to surface determines the closest measurement point to phantom surface. This distance cannot be smaller than the distance of sensor calibration points to probe tip as defined in the probe properties.

8.3 Area Scan

The area scan is used as a fast scan in two dimensions to find the area of high field values, before doing a fine measurement around the hot spot. The sophisticated interpolation routines implemented in DASY software can find the maximum found in the scanned area, within a range of the global maximum. The range (in dB) is specified in the standards for compliance testing. For example, a 2 dB range is required in IEEE standard 1528 and IEC 62209 standards, whereby 3 dB is a requirement when compliance is assessed in accordance with the ARIB standard (Japan), if only one zoom scan follows the area scan, then only the absolute maximum will be taken as reference. For cases where multiple maximums are detected, the number of zoom scans has to be increased accordingly.

Area scan parameters extracted from FCC KDB 865664 D01v01r04 SAR measurement 100 MHz to 6 GHz.

	≤ 3 GHz	> 3 GHz
Maximum distance from closest measurement point (geometric center of probe sensors) to phantom surface	5 ± 1 mm	$\frac{1}{2} \cdot \delta \cdot \ln(2) \pm 0.5$ mm
Maximum probe angle from probe axis to phantom surface normal at the measurement location	$30^\circ \pm 1^\circ$	$20^\circ \pm 1^\circ$
Maximum area scan spatial resolution: Δx_{Area} , Δy_{Area}	≤ 2 GHz: ≤ 15 mm $2 - 3$ GHz: ≤ 12 mm	$3 - 4$ GHz: ≤ 12 mm $4 - 6$ GHz: ≤ 10 mm
	When the x or y dimension of the test device, in the measurement plane orientation, is smaller than the above, the measurement resolution must be \leq the corresponding x or y dimension of the test device with at least one measurement point on the test device.	

8.4 Zoom Scan

Zoom scans are used to assess the peak spatial SAR values within a cubic averaging volume containing 1 gram and 10 gram of simulated tissue. The zoom scan measures points (refer to table below) within a cube whose base faces are centered on the maxima found in a preceding area scan job within the same procedure. When the measurement is done, the zoom scan evaluates the averaged SAR for 1 gram and 10 gram and displays these values next to the job's label.

Zoom scan parameters extracted from FCC KDB 865664 D01v01r04 SAR measurement 100 MHz to 6 GHz.

			≤ 3 GHz	> 3 GHz
Maximum zoom scan spatial resolution: $\Delta x_{\text{Zoom}}, \Delta y_{\text{Zoom}}$			≤ 2 GHz: ≤ 8 mm 2 – 3 GHz: ≤ 5 mm*	3 – 4 GHz: ≤ 5 mm* 4 – 6 GHz: ≤ 4 mm*
Maximum zoom scan spatial resolution, normal to phantom surface	uniform grid: $\Delta z_{\text{Zoom}}(n)$		≤ 5 mm	3 – 4 GHz: ≤ 4 mm 4 – 5 GHz: ≤ 3 mm 5 – 6 GHz: ≤ 2 mm
	graded grid	$\Delta z_{\text{Zoom}}(1)$: between 1 st two points closest to phantom surface	≤ 4 mm	3 – 4 GHz: ≤ 3 mm 4 – 5 GHz: ≤ 2.5 mm 5 – 6 GHz: ≤ 2 mm
		$\Delta z_{\text{Zoom}}(n>1)$: between subsequent points	$\leq 1.5 \cdot \Delta z_{\text{Zoom}}(n-1)$	
Minimum zoom scan volume	x, y, z		≥ 30 mm	3 – 4 GHz: ≥ 28 mm 4 – 5 GHz: ≥ 25 mm 5 – 6 GHz: ≥ 22 mm
Note: δ is the penetration depth of a plane-wave at normal incidence to the tissue medium; see draft standard IEEE P1528-2011 for details.				
* When zoom scan is required and the <i>reported</i> SAR from the <i>area scan based 1-g SAR estimation</i> procedures of KDB 447498 is ≤ 1.4 W/kg, ≤ 8 mm, ≤ 7 mm and ≤ 5 mm zoom scan resolution may be applied, respectively, for 2 GHz to 3 GHz, 3 GHz to 4 GHz and 4 GHz to 6 GHz.				

8.5 Volume Scan Procedures

The volume scan is used to assess overlapping SAR distributions for antennas transmitting in different frequency bands. It is equivalent to an oversized zoom scan used in standalone measurements. The measurement volume will be used to enclose all the simultaneous transmitting antennas. For antennas transmitting simultaneously in different frequency bands, the volume scan is measured separately in each frequency band. In order to sum correctly to compute the 1g aggregate SAR, the EUT remain in the same test position for all measurements and all volume scan use the same spatial resolution and grid spacing. When all volume scan were completed, the software, SEMCAD postprocessor can combine and subsequently superpose these measurement data to calculating the multiband SAR.

8.6 Power Drift Monitoring

All SAR testing is under the EUT install full charged battery and transmit maximum output power. In DASy measurement software, the power reference measurement and power drift measurement procedures are used for monitoring the power drift of EUT during SAR test. Both these procedures measure the field at a specified reference position before and after the SAR testing. The software will calculate the field difference in dB. If the power drifts more than 5%, the SAR will be retested.

9. Test Equipment List

Manufacturer	Name of Equipment	Type/Model	Serial Number	Calibration	
				Last Cal.	Due Date
SPEAG	835MHz System Validation Kit	D835V2	4d091	Nov. 21, 2014	Nov. 20, 2015
SPEAG	1750MHz System Validation Kit	D1750V2	1069	Nov. 21, 2014	Nov. 20, 2015
SPEAG	1900MHz System Validation Kit	D1900V2	5d118	Nov. 21, 2014	Nov. 20, 2015
SPEAG	2450MHz System Validation Kit	D2450V2	840	Nov. 19, 2014	Nov. 18, 2015
SPEAG	Data Acquisition Electronics	DAE4	1358	Aug. 27, 2015	Aug. 26, 2016
SPEAG	Data Acquisition Electronics	DAE4	1210	May 21, 2015	May 20, 2016
SPEAG	Dosimetric E-Field Probe	EX3DV4	3911	Oct. 01, 2015	Sep. 30, 2016
SPEAG	Dosimetric E-Field Probe	EX3DV4	3857	May 28, 2015	May 27, 2016
SPEAG	SAM Twin Phantom	QD 000 P40 CD	TP-1753	NCR	NCR
SPEAG	SAM Twin Phantom	QD 000 P40 CD	TP-1754	NCR	NCR
Agilent	Wireless Communication Test Set	E5515C	MY52102600	Dec. 09, 2014	Dec. 08, 2015
Agilent	ENA Series Network Analyzer	E5071C	MY46317418	Dec. 09, 2014	Dec. 08, 2015
Agilent	Dielectric Probe Kit	85070E	MY44300751	NCR	NCR
Anritsu	Power Sensor	MA2411B	0917070	Jan. 23, 2015	Jan. 22, 2016
Anritsu	Power Meter	ML2495A	1005002	Jan. 23, 2015	Jan. 22, 2016
Anritsu	Power Sensor	MA2411B	1207253	Jan. 28, 2015	Jan. 27, 2016
Anritsu	Power Meter	ML2495A	1218010	Jan. 28, 2015	Jan. 27, 2016
ARRA	Power Divider	A3200-2	NA	NA	NA
SPEAG	Phone Positioner	N/A	N/A	NCR	NCR
R&S	Signal Generator	SMBV100A	258305	Jan. 23, 2015	Jan. 22, 2016
R&S	Spectrum Analyzer	FSP7	101045	Dec. 09, 2014	Dec. 08, 2015
Agilent	Dual Directional Coupler	778D	50422	Note1	
Woken	Attenuation1	WK0602-XX	N/A	Note1	
PE	Attenuation2	PE7005-10	N/A	Note1	
PE	Attenuation3	PE7005-3	N/A	Note1	
AR	Amplifier	5S1G4	342137	Note1	

General Note:

- Prior to system verification and validation, the path loss from the signal generator to the system check source and the power meter, which includes the amplifier, cable, attenuator and directional coupler, was measured by the network analyzer. The reading of the power meter was offset by the path loss difference between the path to the power meter and the path to the system check source to monitor the actual power level fed to the system check source.

10. System Verification

10.1 Tissue Verification

The following tissue formulations are provided for reference only as some of the parameters have not been thoroughly verified. The composition of ingredients may be modified accordingly to achieve the desired target tissue parameters required for routine SAR evaluation.

Frequency (MHz)	Water (%)	Sugar (%)	Cellulose (%)	Salt (%)	Preventol (%)	DGBE (%)	Conductivity (σ)	Permittivity (ϵ_r)
For Head								
835	40.3	57.9	0.2	1.4	0.2	0	0.90	41.5
1800, 1900, 2000	55.2	0	0	0.3	0	44.5	1.40	40.0
2450	55.0	0	0	0	0	45.0	1.80	39.2
For Body								
835	50.8	48.2	0	0.9	0.1	0	0.97	55.2
1800, 1900, 2000	70.2	0	0	0.4	0	29.4	1.52	53.3
2450	68.6	0	0	0	0	31.4	1.95	52.7

<Tissue Dielectric Parameter Check Results>

Frequency (MHz)	Tissue Type	Liquid Temp. ($^{\circ}\text{C}$)	Conductivity (σ)	Permittivity (ϵ_r)	Conductivity Target (σ)	Permittivity Target (ϵ_r)	Delta (σ) (%)	Delta (ϵ_r) (%)	Limit (%)	Date
835	Head	22.5	0.907	42.283	0.90	41.50	0.78	1.89	± 5	2015/11/8
1750	Head	22.6	1.363	41.313	1.37	40.10	-0.51	3.02	± 5	2015/11/7
1900	Head	22.4	1.412	39.311	1.40	40.00	0.86	-1.72	± 5	2015/11/8
2450	Head	22.3	1.833	37.683	1.80	39.20	1.83	-3.87	± 5	2015/11/9
835	Body	22.3	1.013	55.937	0.97	55.20	4.43	1.34	± 5	2015/11/7
1750	Body	22.3	1.507	54.123	1.49	53.40	1.14	1.35	± 5	2015/11/7
1900	Body	22.5	1.572	52.321	1.52	53.30	3.42	-1.84	± 5	2015/11/6
2450	Body	22.8	1.931	51.252	1.95	52.70	-0.97	-2.75	± 5	2015/09/01
2450	Body	22.6	1.940	53.374	1.95	52.70	-0.51	1.28	± 5	2015/11/9

10.2 System Performance Check Results

Comparing to the original SAR value provided by SPEAG, the verification data should be within its specification of 10 %. Below table shows the target SAR and measured SAR after normalized to 1W input power. The table below indicates the system performance check can meet the variation criterion and the plots can be referred to Appendix A of this report.

Date	Frequency (MHz)	Tissue Type	Input Power (mW)	Dipole S/N	Probe S/N	DAE S/N	Measured 1g SAR (W/kg)	Targeted 1g SAR (W/kg)	Normalized 1g SAR (W/kg)	Deviation (%)
2015/11/8	835	Head	250	4d091	3911	1358	2.24	9.11	8.96	-1.65
2015/11/7	1750	Head	250	1069	3911	1358	9.27	37.10	37.08	-0.05
2015/11/8	1900	Head	250	5d118	3911	1358	9.57	40.10	38.28	-4.54
2015/11/9	2450	Head	250	840	3911	1358	13.50	52.30	54	3.25
2015/11/7	835	Body	250	4d091	3911	1358	2.31	9.60	9.24	-3.75
2015/11/7	1750	Body	250	1069	3911	1358	9.45	38.10	37.8	-0.79
2015/11/6	1900	Body	250	5d118	3911	1358	10.00	40.00	40	0.00
2015/09/01	2450	Body	250	840	3857	1210	12.90	51.00	51.6	1.18
2015/11/9	2450	Body	250	840	3911	1358	12.20	51.00	48.8	-4.31

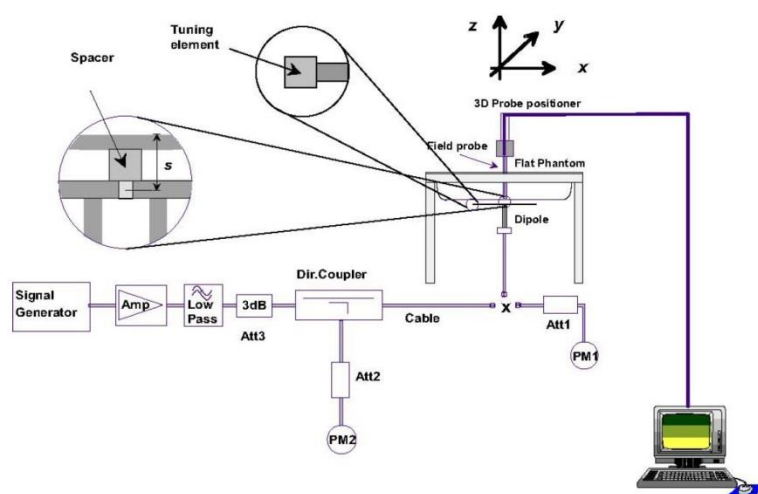


Fig 8.3.1 System Performance Check Setup



Fig 8.3.2 Setup Photo

11. RF Exposure Positions

11.1 Ear and handset reference point

Figure 9.1.1 shows the front, back, and side views of the SAM phantom. The center-of-mouth reference point is labeled "M," the left ear reference point (ERP) is marked "LE," and the right ERP is marked "RE." Each ERP is 15 mm along the B-M (back-mouth) line behind the entrance-to-ear-canal (EEC) point, as shown in Figure 9.1.2 The Reference Plane is defined as passing through the two ear reference points and point M. The line N-F (neck-front), also called the reference pivoting line, is normal to the Reference Plane and perpendicular to both a line passing through RE and LE and the B-M line (see Figure 9.1.3). Both N-F and B-M lines should be marked on the exterior of the phantom shell to facilitate handset positioning. Posterior to the N-F line the ear shape is a flat surface with 6 mm thickness at each ERP, and forward of the N-F line the ear is truncated, as illustrated in Figure 9.1.2. The ear truncation is introduced to preclude the ear lobe from interfering with handset tilt, which could lead to unstable positioning at the cheek.

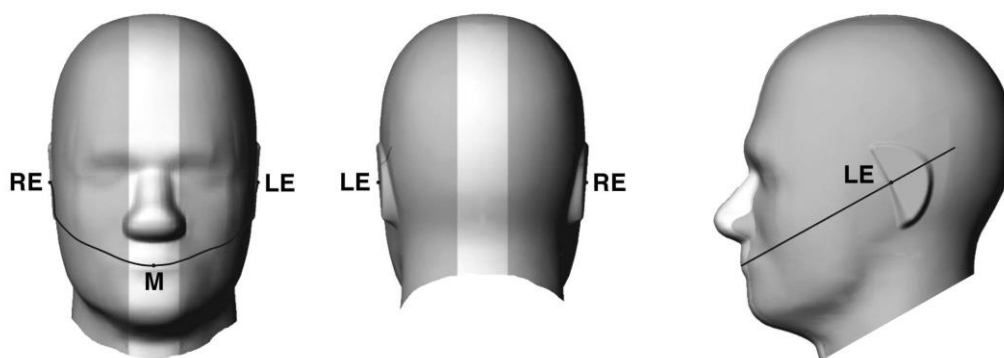


Fig 9.1.1 Front, back, and side views of SAM twin phantom

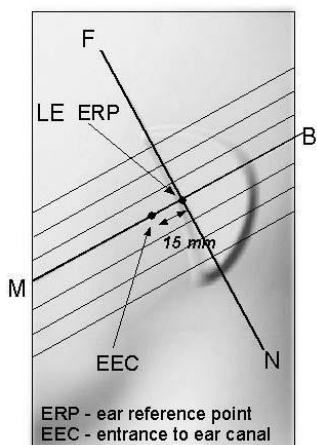


Fig 9.1.2 Close-up side view of phantom showing the ear region.

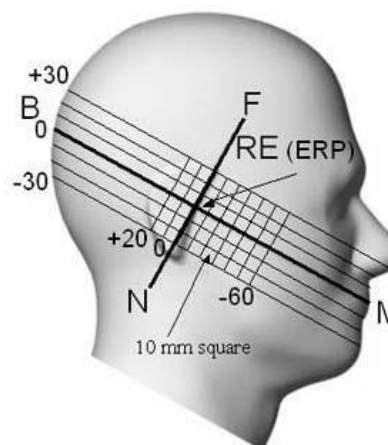


Fig 9.1.3 Side view of the phantom showing relevant markings and seven cross-sectional plane locations

11.2 Definition of the cheek position

1. Ready the handset for talk operation, if necessary. For example, for handsets with a cover piece (flip cover), open the cover. If the handset can transmit with the cover closed, both configurations must be tested.
2. Define two imaginary lines on the handset—the vertical centerline and the horizontal line. The vertical centerline passes through two points on the front side of the handset—the midpoint of the width w_t of the handset at the level of the acoustic output (point A in Figure 9.2.1 and Figure 9.2.2), and the midpoint of the width w_b of the bottom of the handset (point B). The horizontal line is perpendicular to the vertical centerline and passes through the center of the acoustic output (see Figure 9.2.1). The two lines intersect at point A. Note that for many handsets, point A coincides with the center of the acoustic output; however, the acoustic output may be located elsewhere on the horizontal line. Also note that the vertical centerline is not necessarily parallel to the front face of the handset (see Figure 9.2.2), especially for clamshell handsets, handsets with flip covers, and other irregularly-shaped handsets.
3. Position the handset close to the surface of the phantom such that point A is on the (virtual) extension of the line passing through points RE and LE on the phantom (see Figure 9.2.3), such that the plane defined by the vertical centerline and the horizontal line of the handset is approximately parallel to the sagittal plane of the phantom.
4. Translate the handset towards the phantom along the line passing through RE and LE until handset point A touches the pinna at the ERP.
5. While maintaining the handset in this plane, rotate it around the LE-RE line until the vertical centerline is in the plane normal to the plane containing B-M and N-F lines, i.e., the Reference Plane.
6. Rotate the handset around the vertical centerline until the handset (horizontal line) is parallel to the N-F line.
7. While maintaining the vertical centerline in the Reference Plane, keeping point A on the line passing through RE and LE, and maintaining the handset contact with the pinna, rotate the handset about the N-F line until any point on the handset is in contact with a phantom point below the pinna on the cheek. See Figure 9.2.3. The actual rotation angles should be documented in the test report.

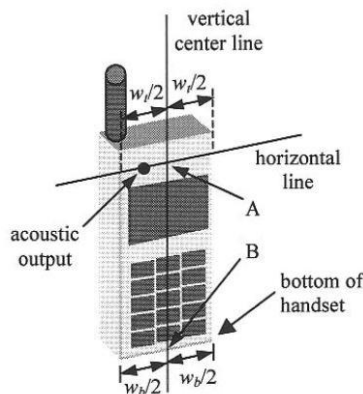


Fig 9.2.1 Handset vertical and horizontal reference lines—“fixed case”

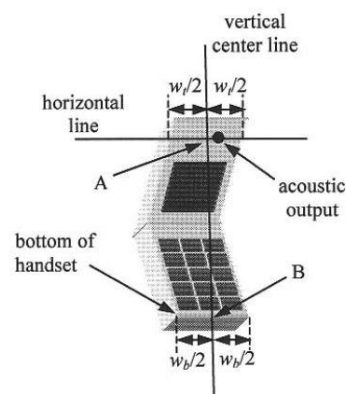


Fig 9.2.2 Handset vertical and horizontal reference lines—“clam-shell case”

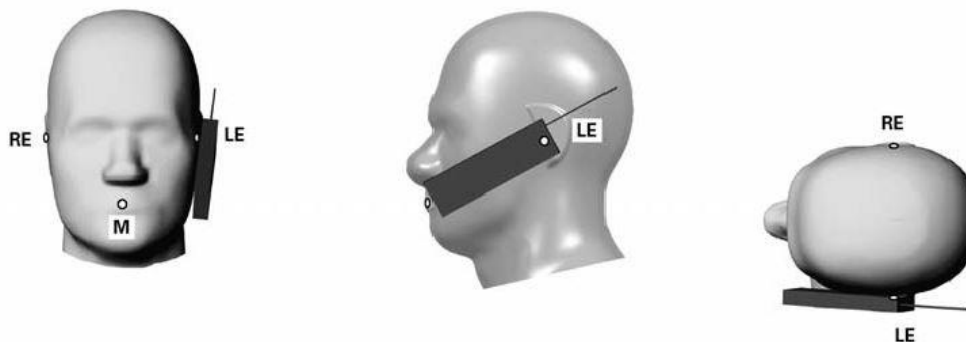


Fig 9.2.3 cheek or touch position. The reference points for the right ear (RE), left ear (LE), and mouth (M), which establish the Reference Plane for handset positioning, are indicated.

11.3 Definition of the tilt position

1. Ready the handset for talk operation, if necessary. For example, for handsets with a cover piece (flip cover), open the cover. If the handset can transmit with the cover closed, both configurations must be tested.
2. While maintaining the orientation of the handset, move the handset away from the pinna along the line passing through RE and LE far enough to allow a rotation of the handset away from the cheek by 15°.
3. Rotate the handset around the horizontal line by 15°.
4. While maintaining the orientation of the handset, move the handset towards the phantom on the line passing through RE and LE until any part of the handset touches the ear. The tilt position is obtained when the contact point is on the pinna. See Figure 9.3.1. If contact occurs at any location other than the pinna, e.g., the antenna at the back of the phantom head, the angle of the handset should be reduced. In this case, the tilt position is obtained if any point on the handset is in contact with the pinna and a second point

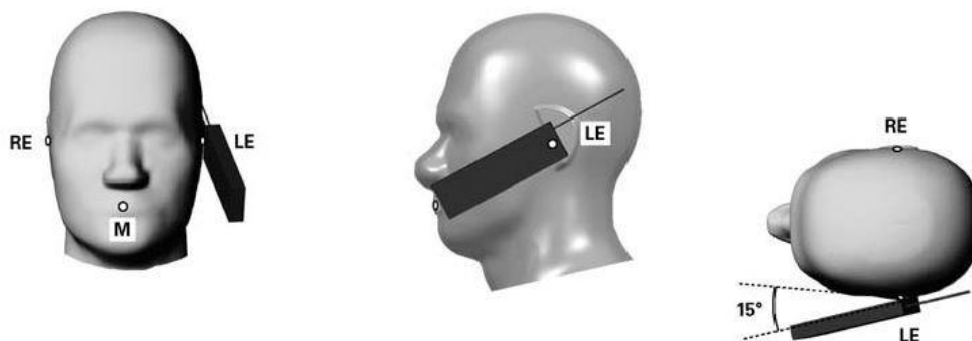


Fig 9.3.1 Tilt position. The reference points for the right ear (RE), left ear (LE), and mouth (M), which define the Reference Plane for handset positioning, are indicated.

11.4 Body Worn Accessory

Body-worn operating configurations are tested with the belt-clips and holsters attached to the device and positioned against a flat phantom in a normal use configuration (see Figure 9.4). Per KDB648474 D04v01r03, body-worn accessory exposure is typically related to voice mode operations when handsets are carried in body-worn accessories. The body-worn accessory procedures in FCC KDB 447498 D01v06 should be used to test for body-worn accessory SAR compliance, without a headset connected to it. This enables the test results for such configuration to be compatible with that required for hotspot mode when the body-worn accessory test separation distance is greater than or equal to that required for hotspot mode, when applicable. When the reported SAR for body-worn accessory, measured without a headset connected to the handset is $< 1.2 \text{ W/kg}$, the highest reported SAR configuration for that wireless mode and frequency band should be repeated for that body-worn accessory with a headset attached to the handset.

Accessories for body-worn operation configurations are divided into two categories: those that do not contain metallic components and those that do contain metallic components. When multiple accessories that do not contain metallic components are supplied with the device, the device is tested with only the accessory that dictates the closest spacing to the body. Then multiple accessories that contain metallic components are test with the device with each accessory. If multiple accessories share an identical metallic component (i.e. the same metallic belt-clip used with different holsters with no other metallic components) only the accessory that dictates the closest spacing to the body is tested.

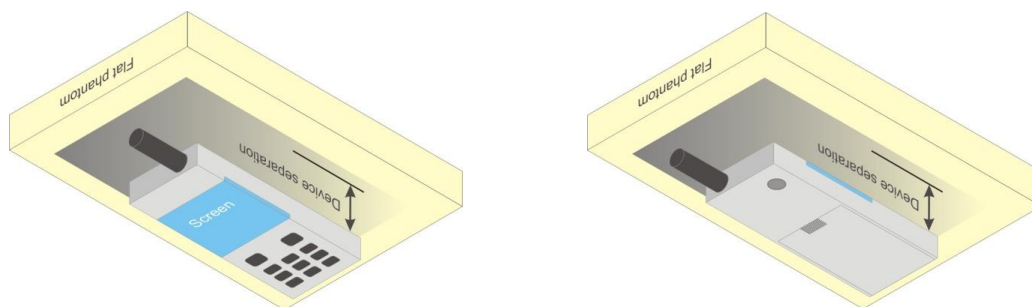


Fig 9.4 Body Worn Position

11.5 Wireless Router

Some battery-operated handsets have the capability to transmit and receive user through simultaneous transmission of WIFI simultaneously with a separate licensed transmitter. The FCC has provided guidance in FCC KDB Publication 941225 D06 v02r01 where SAR test considerations for handsets ($L \times W \geq 9 \text{ cm} \times 5 \text{ cm}$) are based on a composite test separation distance of 10mm from the front, back and edges of the device containing transmitting antennas within 2.5cm of their edges, determined from general mixed use conditions for this type of devices. Since the hotspot SAR results may overlap with the body-worn accessory SAR requirements, the more conservative configurations can be considered, thus excluding some body-worn accessory SAR tests.

When the user enables the personal wireless router functions for the handset, actual operations include simultaneous transmission of both the WIFI transmitter and another licensed transmitter. Both transmitters often do not transmit at the same transmitting frequency and thus cannot be evaluated for SAR under actual use conditions due to the limitations of the SAR assessment probes. Therefore, SAR must be evaluated for each frequency transmission and mode separately and spatially summed with the WIFI transmitter according to FCC KDB Publication 447498 D01v06 publication procedures. The "Portable Hotspot" feature on the handset was NOT activated during SAR assessments, to ensure the SAR measurements were evaluated for a single transmission frequency RF signal at a time.

12. Conducted RF Output Power (Unit: dBm)

<GSM Conducted Power>

1. Per KDB 447498 D01v06, the maximum output power channel is used for SAR testing and for further SAR test reduction.
2. Per KDB 941225 D01v03r01, considering the possibility of e.g. 3rd party VoIP operation for Head and body-worn SAR test reduction for GSM and GPRS and EDGE modes is determined by the source-based time-averaged output power including tune-up tolerance. The mode with highest specified time-averaged output power should be tested for SAR compliance in the applicable exposure conditions. For modes with the same specified maximum output power and tolerance, the higher number time-slot configuration should be tested. Therefore, the EUT was set in GPRS (4Tx slots) for GSM850, and the EUT was set in GPRS (2Tx slots) for GSM1900.
3. Per KDB 941225 D01v03r01, for Hotspot SAR test reduction for GPRS and EDGE modes is determined by the source-based time-averaged output power including tune-up tolerance, for modes with the same specified maximum output power and tolerance, the higher number time-slot configuration should be tested, therefore, the EUT was set in GPRS (4Tx slots) for GSM850, and the EUT was set in GPRS (2Tx slots) for GSM1900.

Band GSM850		Burst Average Power (dBm)			Tune-up Limit (dBm)	Frame-Average Power (dBm)			Tune-up Limit (dBm)
TX Channel		128	189	251		128	189	251	
Frequency (MHz)		824.2	836.4	848.8		824.2	836.4	848.8	
GSM (GMSK, 1 Tx slot)		31.99	32.04	32.07	33.00	22.99	23.04	23.07	24.00
GPRS (GMSK, 1 Tx slot)		31.94	31.96	31.98	33.00	22.94	22.96	22.98	24.00
GPRS (GMSK, 2 Tx slots)		30.44	30.74	30.48	31.00	24.44	24.74	24.48	25.00
GPRS (GMSK, 3 Tx slots)		28.89	28.84	28.92	30.00	24.63	24.58	24.66	25.74
GPRS (GMSK, 4 Tx slots)		27.54	27.51	27.50	29.00	24.54	24.51	24.50	26.00
EDGE (8PSK, 1 Tx slot)		26.07	26.06	25.99	27.00	17.07	17.06	16.99	18.00
EDGE (8PSK, 2 Tx slots)		25.90	25.86	25.87	26.50	19.90	19.86	19.87	20.50
EDGE (8PSK, 3 Tx slots)		25.13	25.11	25.16	26.00	20.87	20.85	20.90	21.74
EDGE (8PSK, 4 Tx slots)		24.42	24.42	24.45	25.50	21.42	21.42	21.45	22.50
Band GSM1900		Burst Average Power (dBm)			Tune-up Limit (dBm)	Frame-Average Power (dBm)			Tune-up Limit (dBm)
TX Channel		512	661	810		512	661	810	
Frequency (MHz)		1850.2	1880	1909.8		1850.2	1880	1909.8	
GSM (GMSK, 1 Tx slot)		28.86	28.95	29.04	30.00	19.86	19.95	20.04	21.00
GPRS (GMSK, 1 Tx slot)		28.85	28.84	28.98	30.00	19.85	19.84	19.98	21.00
GPRS (GMSK, 2 Tx slots)		26.85	26.88	27.01	28.00	20.85	20.88	21.01	22.00
GPRS (GMSK, 3 Tx slots)		24.54	24.78	24.84	26.00	20.28	20.52	20.58	21.74
GPRS (GMSK, 4 Tx slots)		23.30	23.41	23.49	24.50	20.30	20.41	20.49	21.50
EDGE (8PSK, 1 Tx slot)		24.91	24.96	25.11	26.00	15.91	15.96	16.11	17.00
EDGE (8PSK, 2 Tx slots)		24.75	24.84	25.02	25.50	18.75	18.84	19.02	19.50
EDGE (8PSK, 3 Tx slots)		23.34	23.34	23.50	24.50	19.08	19.08	19.24	20.24
EDGE (8PSK, 4 Tx slots)		22.32	22.39	22.59	23.50	19.32	19.39	19.59	20.50

Remark: The frame-averaged power is linearly scaled the maximum burst averaged power over 8 time slots.

The calculated method are shown as below:

Frame-averaged power = Maximum burst averaged power (1 Tx Slot) - 9 dB

Frame-averaged power = Maximum burst averaged power (2 Tx Slots) - 6 dB

Frame-averaged power = Maximum burst averaged power (3 Tx Slots) - 4.26 dB

Frame-averaged power = Maximum burst averaged power (4 Tx Slots) - 3 dB

<WCDMA Conducted Power>

1. The following tests were conducted according to the test requirements outlines in 3GPP TS 34.121 specification.
2. The procedures in KDB 941225 D01v03r01 are applied for 3GPP Rel. 6 HSPA to configure the device in the required sub-test mode(s) to determine SAR test exclusion.

A summary of these settings are illustrated below:

HSDPA Setup Configuration:

- a. The EUT was connected to Base Station Agilent E5515C referred to the Setup Configuration.
- b. The RF path losses were compensated into the measurements.
- c. A call was established between EUT and Base Station with following setting:
 - i. Set Gain Factors (β_c and β_d) and parameters were set according to each
 - ii. Specific sub-test in the following table, C10.1.4, quoted from the TS 34.121
 - iii. Set RMC 12.2Kbps + HSDPA mode.
 - iv. Set Cell Power = -86 dBm
 - v. Set HS-DSCH Configuration Type to FRC (H-set 1, QPSK)
 - vi. Select HSDPA Uplink Parameters
 - vii. Set Delta ACK, Delta NACK and Delta CQI = 8
 - viii. Set Ack-Nack Repetition Factor to 3
 - ix. Set CQI Feedback Cycle (k) to 4 ms
 - x. Set CQI Repetition Factor to 2
 - xi. Power Ctrl Mode = All Up bits
- d. The transmitted maximum output power was recorded.

Table C.10.1.4: β values for transmitter characteristics tests with HS-DPCCH

Sub-test	β_c	β_d	β_d (SF)	β_c/β_d	β_{hs} (Note 1, Note 2)	CM (dB) (Note 3)	MPR (dB) (Note 3)
1	2/15	15/15	64	2/15	4/15	0.0	0.0
2	12/15 (Note 4)	15/15 (Note 4)	64	12/15 (Note 4)	24/15	1.0	0.0
3	15/15	8/15	64	15/8	30/15	1.5	0.5
4	15/15	4/15	64	15/4	30/15	1.5	0.5

Note 1: Δ_{ACK} , Δ_{NACK} and $\Delta_{CQI} = 30/15$ with $\beta_{hs} = 30/15 * \beta_c$.

Note 2: For the HS-DPCCH power mask requirement test in clause 5.2C, 5.7A, and the Error Vector Magnitude (EVM) with HS-DPCCH test in clause 5.13.1A, and HSDPA EVM with phase discontinuity in clause 5.13.1AA, Δ_{ACK} and $\Delta_{NACK} = 30/15$ with $\beta_{hs} = 30/15 * \beta_c$, and $\Delta_{CQI} = 24/15$ with $\beta_{hs} = 24/15 * \beta_c$.

Note 3: CM = 1 for $\beta_c/\beta_d = 12/15$, $\beta_{hs}/\beta_c = 24/15$. For all other combinations of DPDCCH, DPCCH and HS-DPCCH the MPR is based on the relative CM difference. This is applicable for only UEs that support HSDPA in release 6 and later releases.

Note 4: For subtest 2 the β_c/β_d ratio of 12/15 for the TFC during the measurement period (TF1, TF0) is achieved by setting the signalled gain factors for the reference TFC (TF1, TF1) to $\beta_c = 11/15$ and $\beta_d = 15/15$.

Setup Configuration

HSUPA Setup Configuration:

- a. The EUT was connected to Base Station Agilent E5515C referred to the Setup Configuration.
- b. The RF path losses were compensated into the measurements.
- c. A call was established between EUT and Base Station with following setting * :
 - i. Call Configs = 5.2B, 5.9B, 5.10B, and 5.13.2B with QPSK
 - ii. Set the Gain Factors (β_c and β_d) and parameters (AG Index) were set according to each specific sub-test in the following table, C11.1.3, quoted from the TS 34.121
 - iii. Set Cell Power = -86 dBm
 - iv. Set Channel Type = 12.2k + HSPA
 - v. Set UE Target Power
 - vi. Power Ctrl Mode= Alternating bits
 - vii. Set and observe the E-TFCI
 - viii. Confirm that E-TFCI is equal to the target E-TFCI of 75 for sub-test 1, and other subtest's E-TFCI
- d. The transmitted maximum output power was recorded.

Table C.11.1.3: β values for transmitter characteristics tests with HS-DPCCH and E-DCH

Sub-test	β_c	β_d	β_d (SF)	β_c/β_d	β_{HS} (Note 1)	β_{ec}	β_{ed} (Note 5) (Note 6)	β_{ed} (SF)	β_{ed} (Codes)	CM (dB) (Note 2)	MPR (dB) (Note 2)	AG Index (Note 6)	E-TFCI
1	11/15 (Note 3)	15/15 (Note 3)	64	11/15 (Note 3)	22/15	209/25	1309/225	4	1	1.0	0.0	20	75
2	6/15	15/15	64	6/15	12/15	12/15	94/75	4	1	3.0	2.0	12	67
3	15/15	9/15	64	15/9	30/15	30/15	β_{ed1} : 47/15 β_{ed2} : 47/15	4 4	2	2.0	1.0	15	92
4	2/15	15/15	64	2/15	4/15	2/15	56/75	4	1	3.0	2.0	17	71
5	15/15 (Note 4)	15/15 (Note 4)	64	15/15 (Note 4)	30/15	24/15	134/15	4	1	1.0	0.0	21	81

Note 1: Δ_{ACK} , Δ_{NACK} and $\Delta_{CQI} = 30/15$ with $\beta_{hs} = 30/15 * \beta_c$.

Note 2: CM = 1 for $\beta_c/\beta_d = 12/15$, $\beta_{hs}/\beta_c = 24/15$. For all other combinations of DPDCH, DPCCH, HS-DPCCH, E-DPDCH and E-DPCCH the MPR is based on the relative CM difference.

Note 3: For subtest 1 the β_c/β_d ratio of 11/15 for the TFC during the measurement period (TF1, TF0) is achieved by setting the signalled gain factors for the reference TFC (TF1, TF1) to $\beta_c = 10/15$ and $\beta_d = 15/15$.

Note 4: For subtest 5 the β_c/β_d ratio of 15/15 for the TFC during the measurement period (TF1, TF0) is achieved by setting the signalled gain factors for the reference TFC (TF1, TF1) to $\beta_c = 14/15$ and $\beta_d = 15/15$.

Note 5: In case of testing by UE using E-DPDCH Physical Layer category 1, Sub-test 3 is omitted according to TS25.306 Table 5.1g.

Note 6: β_{ed} can not be set directly, it is set by Absolute Grant Value.

Setup Configuration

<WCDMA Conducted Power>
General Note:

1. Per KDB 941225 D01v03r01, SAR for Head / Hotspot / Body-worn exposure is measured using a 12.2 kbps RMC with TPC bits configured to all "1's".
2. Per KDB 941225 D01v03r01, RMC 12.2kbps setting is used to evaluate SAR. If the maximum output power and tune-up tolerance specified for production units in HSDPA / HSUPA is $\leq \frac{1}{4}$ dB higher than RMC 12.2Kbps or when the highest reported SAR of the RMC12.2Kbps is scaled by the ratio of specified maximum output power and tune-up tolerance of HSDPA / HSUPA to RMC12.2Kbps and the adjusted SAR is ≤ 1.2 W/kg, SAR measurement is not required for HSDPA / HSUPA.

Band		WCDMA Band V			Tune-up Limit (dBm)	WCDMA Band II			Tune-up Limit (dBm)
TX Channel		4132	4182	4233		9262	9400	9538	
Rx Channel		4357	4407	4458		9662	9800	9938	
Frequency (MHz)		826.4	836.4	846.6		1852.4	1880	1907.6	
3GPP Rel 99	AMR 12.2Kbps	23.57	23.88	23.86	24.00	21.20	21.63	21.44	21.80
3GPP Rel 99	RMC 12.2Kbps	23.58	23.89	23.88	24.00	21.23	21.64	21.46	21.80
3GPP Rel 6	HSDPA Subtest-1	21.98	22.09	22.08	23.00	19.70	20.03	20.00	21.00
3GPP Rel 6	HSDPA Subtest-2	21.93	22.04	22.05	23.00	19.66	20.08	19.94	21.00
3GPP Rel 6	HSDPA Subtest-3	22.01	22.01	22.02	22.50	19.74	20.04	19.99	20.50
3GPP Rel 6	HSDPA Subtest-4	21.97	21.99	22.01	22.50	19.70	20.08	19.96	20.50
3GPP Rel 6	HSUPA Subtest-1	21.30	21.54	21.52	22.00	19.68	19.99	19.85	20.00
3GPP Rel 6	HSUPA Subtest-2	20.75	20.97	20.94	21.00	19.22	19.53	19.43	20.00
3GPP Rel 6	HSUPA Subtest-3	21.11	21.31	21.28	22.00	19.03	19.27	19.18	20.00
3GPP Rel 6	HSUPA Subtest-4	21.42	21.65	21.63	22.00	19.74	20.04	19.89	20.50
3GPP Rel 6	HSUPA Subtest-5	21.25	21.50	21.47	22.00	19.77	20.07	19.96	20.50

Band		WCDMA Band IV			Tune-up Limit (dBm)
TX Channel		1312	1413	1513	
Rx Channel		1537	1638	1738	
Frequency (MHz)		1712.4	1732.6	1752.6	
3GPP Rel 99	AMR 12.2Kbps	21.20	21.48	21.43	21.80
3GPP Rel 99	RMC 12.2Kbps	21.22	21.50	21.46	21.80
3GPP Rel 6	HSDPA Subtest-1	19.87	19.97	20.05	20.50
3GPP Rel 6	HSDPA Subtest-2	19.87	19.95	20.00	20.50
3GPP Rel 6	HSDPA Subtest-3	19.94	20.01	20.06	20.50
3GPP Rel 6	HSDPA Subtest-4	19.91	19.98	20.01	20.50
3GPP Rel 6	HSUPA Subtest-1	20.04	20.15	20.11	20.50
3GPP Rel 6	HSUPA Subtest-2	19.15	19.29	19.25	20.00
3GPP Rel 6	HSUPA Subtest-3	19.24	19.46	19.42	20.00
3GPP Rel 6	HSUPA Subtest-4	19.16	19.37	19.30	20.00
3GPP Rel 6	HSUPA Subtest-5	19.98	20.12	20.08	20.50

<WLAN Conducted Power>**General Note:**

1. Per KDB 248227 D01v02r02, SAR test reduction is determined according to 802.11 transmission mode configurations and certain exposure conditions with multiple test positions. In the 2.4 GHz band, separate SAR procedures are applied to DSSS and OFDM configurations to simplify DSSS test requirements. For OFDM, in both 2.4 and 5 GHz bands, an initial test configuration must be determined for each standalone and aggregated frequency band, according to the transmission mode configuration with the highest maximum output power specified for production units to perform SAR measurements. If the same highest maximum output power applies to different combinations of channel bandwidths, modulations and data rates, additional procedures are applied to determine which test configurations require SAR measurement. When applicable, an initial test position may be applied to reduce the number of SAR measurements required for next to the ear, UMPC mini-tablet or hotspot mode configurations with multiple test positions.
2. For 2.4 GHz 802.11b DSSS, either the initial test position procedure for multiple exposure test positions or the DSSS procedure for fixed exposure position is applied; these are mutually exclusive. For 2.4 GHz and 5 GHz OFDM configurations, the initial test configuration is applied to measure SAR using either the initial test position procedure for multiple exposure test position configurations or the initial test configuration procedures for fixed exposure test conditions. Based on the reported SAR of the measured configurations and maximum output power of the transmission mode configurations that are not included in the initial test configuration, the subsequent test configuration and initial test position procedures are applied to determine if SAR measurements are required for the remaining OFDM transmission configurations. In general, the number of test channels that require SAR measurement is minimized based on maximum output power measured for the test sample(s).
3. For OFDM transmission configurations in the 2.4 GHz and 5 GHz bands, When the same maximum power is specified for multiple transmission modes in a frequency band, the largest channel bandwidth, lowest order modulation, lowest data rate and lowest order 802.11a/g/n/ac mode is used for SAR measurement, on the highest measured output power channel for each frequency band.
4. DSSS and OFDM configurations are considered separately according to the required SAR procedures. SAR is measured in the initial test position using the 802.11 transmission mode configuration required by the DSSS procedure or initial test configuration and subsequent test configuration(s) according to the OFDM procedures.18 The initial test position procedure is described in the following:
 - a. When the reported SAR of the initial test position is ≤ 0.4 W/kg, further SAR measurement is not required for the other test positions in that exposure configuration and 802.11 transmission mode combinations within the frequency band or aggregated band.
 - b. When the reported SAR of the test position is > 0.4 W/kg, SAR is repeated for the 802.11 transmission mode configuration tested in the initial test position to measure the subsequent next closet/smallest test separation distance and maximum coupling test position on the highest maximum output power channel, until the report SAR is ≤ 0.8 W/kg or all required test position are tested.
 - c. For all positions/configurations, when the reported SAR is > 0.8 W/kg, SAR is measured for these test positions/configurations on the subsequent next highest measured output power channel(s) until the reported SAR is ≤ 1.2 W/kg or all required channels are tested.

<2.4GHz WLAN>

	Mode	Channel	Frequency (MHz)	Data Rate	Average power (dBm)	Tune-Up Limit	Duty Cycle %
2.4GHz WLAN	802.11b	CH 1	2412	1Mbps	12.65	13.50	97.63
		CH 6	2437		14.11	15.00	
		CH 11	2462		14.92	15.50	
	802.11g	CH 1	2412	6Mbps	10.01	11.00	87.26
		CH 6	2437		11.24	12.00	
		CH 11	2462		12.23	13.00	
	802.11n-HT20	CH 1	2412	MCS0	8.10	9.00	86.49
		CH 6	2437		9.38	10.00	
		CH 11	2462		10.38	11.00	

13. Bluetooth Exclusions Applied

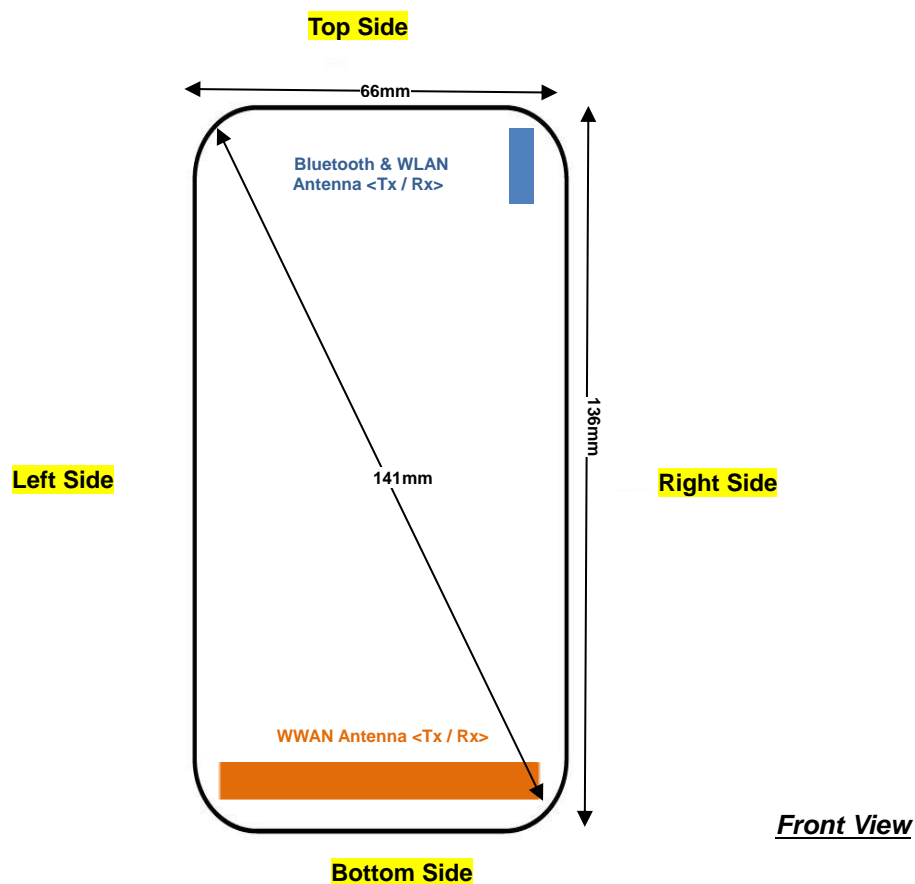
General Note:

For 2.4GHz Bluetooth SAR testing was selected 1Mbps, due to its highest average power.

Mode	Channel	Frequency (MHz)	Average power (dBm)			Tune-Up Limit
			1Mbps	2Mbps	3Mbps	
v3.0 with EDR	CH 00	2402	9.25	7.95	7.97	10.00
	CH 39	2441	9.65	8.27	8.50	
	CH 78	2480	9.32	8.16	8.17	

Mode	Channel	Frequency (MHz)	Average power (dBm)	Tune-Up Limit
			GFSK	
v4.0 with LE	CH 00	2402	-0.90	0
	CH 19	2440	-0.32	
	CH 39	2480	-0.59	

14. Antenna Location



Distance of the Antenna to the EUT surface/edge						
Antennas	Back	Front	Top Side	Bottom Side	Right Side	Left Side
WWAN	≤ 25mm	≤ 25mm	123mm	≤ 25mm	≤25mm	≤ 25mm
BT&WLAN	≤ 25mm	≤ 25mm	≤ 25mm	117mm	≤ 25mm	54mm

Positions for SAR tests; Hotspot mode						
Antennas	Back	Front	Top Side	Bottom Side	Right Side	Left Side
WWAN Main	Yes	Yes	No	Yes	Yes	Yes
BT&WLAN	Yes	Yes	Yes	No	Yes	No

General Note: Referring to KDB 941225 D06 v02r01, when the overall device length and width are ≥ 9cm*5cm, the test distance is 10 mm. SAR must be measured for all sides and surfaces with a transmitting antenna located within 25mm from that surface or edge.

15. SAR Test Results

General Note:

1. Per KDB 447498 D01v06, the reported SAR is the measured SAR value adjusted for maximum tune-up tolerance.
 - a. Tune-up scaling Factor = tune-up limit power (mW) / EUT RF power (mW), where tune-up limit is the maximum rated power among all production units.
 - b. For SAR testing of WLAN signal with non-100% duty cycle, the measured SAR is scaled-up by the duty cycle scaling factor which is equal to "1/(duty cycle)"
 - c. For WWAN/Bluetooth: Reported SAR(W/kg)= Measured SAR(W/kg)*Tune-up Scaling Factor
 - d. For WLAN: Reported SAR(W/kg)= Measured SAR(W/kg)* Duty Cycle scaling factor * Tune-up scaling factor
2. Per KDB 447498 D01v06, for each exposure position, testing of other required channels within the operating mode of a frequency band is not required when the *reported* 1-g or 10-g SAR for the mid-band or highest output power channel is:
 - ≤ 0.8 W/kg or 2.0 W/kg, for 1-g or 10-g respectively, when the transmission band is ≤ 100 MHz
 - ≤ 0.6 W/kg or 1.5 W/kg, for 1-g or 10-g respectively, when the transmission band is between 100 MHz and 200 MHz
 - ≤ 0.4 W/kg or 1.0 W/kg, for 1-g or 10-g respectively, when the transmission band is ≥ 200 MHz
3. Pre KDB648474 D04v01r03, when the reported SAR for a body-worn accessory, measured without a headset connected to the handset, is > 1.2 W/kg, the highest reported SAR configuration for that wireless mode and frequency band should be repeated for that body-worn accessory with a headset attached to the handset.

GSM Note:

1. Per KDB 941225 D01v03r01, considering the possibility of e.g. 3rd party VoIP operation for Head and body-worn SAR test reduction for GSM and GPRS and EDGE modes is determined by the source-based time-averaged output power including tune-up tolerance. The mode with highest specified time-averaged output power should be tested for SAR compliance in the applicable exposure conditions. For modes with the same specified maximum output power and tolerance, the higher number time-slot configuration should be tested. Therefore, the EUT was set in GPRS (4Tx slots) for GSM850, and the EUT was set in GPRS (2Tx slots) for GSM1900.
2. Per KDB 941225 D01v03r01, for Hotspot SAR test reduction for GPRS and EDGE modes is determined by the source-based time-averaged output power including tune-up tolerance, for modes with the same specified maximum output power and tolerance, the higher number time-slot configuration should be tested, therefore, the EUT was set in GPRS (4Tx slots) for GSM850, and the EUT was set in GPRS (2Tx slots) for GSM1900.

UMTS Note:

1. Per KDB 941225 D01v03r01, SAR for Head / Hotspot / Body-worn exposure is measured using a 12.2 kbps RMC with TPC bits configured to all "1's".
2. Per KDB 941225 D01v03r01, RMC 12.2kbps setting is used to evaluate SAR. If the maximum output power and tune-up tolerance specified for production units in HSDPA / HSUPA is $\leq \frac{1}{4}$ dB higher than RMC 12.2Kbps or when the highest reported SAR of the RMC12.2Kbps is scaled by the ratio of specified maximum output power and tune-up tolerance of HSDPA / HSUPA to RMC12.2Kbps and the adjusted SAR is ≤ 1.2 W/kg, SAR measurement is not required for HSDPA / HSUPA.

WLAN Note:

1. Per KDB 248227 D01v02r02, for 2.4GHz 802.11g/n SAR testing is not required when the highest reported SAR for DSSS is adjusted by the ratio of OFDM to DSSS specified maximum output power and the adjusted SAR is ≤ 1.2 W/kg.
2. When the reported SAR of the test position is > 0.4 W/kg, SAR is repeated for the 802.11 transmission mode configuration tested in the initial test position to measure the subsequent next closet/smallest test separation distance and maximum coupling test position on the highest maximum output power channel, until the report SAR is ≤ 0.8 W/kg or all required test position are tested.
3. For all positions / configurations, when the reported SAR is > 0.8 W/kg, SAR is measured for these test positions / configurations on the subsequent next highest measured output power channel(s) until the reported SAR is ≤ 1.2 W/kg or all required channels are tested.
4. During SAR testing the WLAN transmission was verified using a spectrum analyzer.

15.1 Head SAR

<GSM SAR>

Plot No.	Band	Mode	Test Position	Ch.	Freq. (MHz)	Average Power (dBm)	Tune-Up Limit (dBm)	Tune-up Scaling Factor	Power Drift (dB)	Measured 1g SAR (W/kg)	Reported 1g SAR (W/kg)
	GSM850	GPRS (4 Tx slots)	Right Cheek	128	824.2	27.54	29.00	1.400	0.06	0.19	0.266
	GSM850	GPRS (4 Tx slots)	Right Tilted	128	824.2	27.54	29.00	1.400	0.03	0.164	0.230
	GSM850	GPRS (4 Tx slots)	Left Cheek	128	824.2	27.54	29.00	1.400	0.04	0.191	0.267
	GSM850	GPRS (4 Tx slots)	Left Tilted	128	824.2	27.54	29.00	1.400	0.01	0.157	0.220
	GSM850	GPRS (4 Tx slots)	Left Cheek	189	836.4	27.51	29.00	1.409	0.06	0.231	0.326
01	GSM850	GPRS (4 Tx slots)	Left Cheek	251	848.8	27.50	29.00	1.413	0.07	0.325	0.459
02	GSM1900	GPRS (2 Tx slots)	Right Cheek	810	1909.8	27.01	28.00	1.256	0.04	0.261	0.328
	GSM1900	GPRS (2 Tx slots)	Right Tilted	810	1909.8	27.01	28.00	1.256	0.1	0.054	0.068
	GSM1900	GPRS (2 Tx slots)	Left Cheek	810	1909.8	27.01	28.00	1.256	0.06	0.172	0.216
	GSM1900	GPRS (2 Tx slots)	Left Tilted	810	1909.8	27.01	28.00	1.256	0.04	0.081	0.102
	GSM1900	GPRS (2 Tx slots)	Right Cheek	512	1850.2	26.85	28.00	1.303	0.09	0.252	0.328
	GSM1900	GPRS (2 Tx slots)	Right Cheek	661	1880	26.88	28.00	1.294	0.06	0.249	0.322

<WCDMA SAR>

Plot No.	Band	Mode	Test Position	Ch.	Freq. (MHz)	Average Power (dBm)	Tune-Up Limit (dBm)	Tune-up Scaling Factor	Power Drift (dB)	Measured 1g SAR (W/kg)	Reported 1g SAR (W/kg)
	WCDMA Band V	RMC 12.2Kbps	Right Cheek	4182	836.4	23.89	24.00	1.026	0.02	0.448	0.459
	WCDMA Band V	RMC 12.2Kbps	Right Tilted	4182	836.4	23.89	24.00	1.026	0.17	0.369	0.378
	WCDMA Band V	RMC 12.2Kbps	Left Cheek	4182	836.4	23.89	24.00	1.026	0.09	0.422	0.433
	WCDMA Band V	RMC 12.2Kbps	Left Tilted	4182	836.4	23.89	24.00	1.026	-0.02	0.34	0.349
	WCDMA Band V	RMC 12.2Kbps	Right Cheek	4132	826.4	23.58	24.00	1.102	0.08	0.345	0.380
03	WCDMA Band V	RMC 12.2Kbps	Right Cheek	4233	846.6	23.88	24.00	1.028	0.03	0.476	0.489
	WCDMA Band IV	RMC 12.2Kbps	Right Cheek	1413	1732.6	21.50	21.80	1.072	0.01	0.159	0.170
	WCDMA Band IV	RMC 12.2Kbps	Right Tilted	1413	1732.6	21.50	21.80	1.072	-0.05	0.084	0.090
	WCDMA Band IV	RMC 12.2Kbps	Left Cheek	1413	1732.6	21.50	21.80	1.072	-0.16	0.114	0.122
	WCDMA Band IV	RMC 12.2Kbps	Left Tilted	1413	1732.6	21.50	21.80	1.072	0.05	0.068	0.073
	WCDMA Band IV	RMC 12.2Kbps	Right Cheek	1312	1712.4	21.22	21.80	1.143	0.02	0.15	0.171
04	WCDMA Band IV	RMC 12.2Kbps	Right Cheek	1513	1752.6	21.46	21.80	1.081	0.07	0.178	0.192
	WCDMA Band II	RMC 12.2Kbps	Right Cheek	9400	1880	21.64	21.80	1.038	0.15	0.377	0.391
	WCDMA Band II	RMC 12.2Kbps	Right Tilted	9400	1880	21.64	21.80	1.038	0.07	0.082	0.085
	WCDMA Band II	RMC 12.2Kbps	Left Cheek	9400	1880	21.64	21.80	1.038	0.11	0.237	0.246
	WCDMA Band II	RMC 12.2Kbps	Left Tilted	9400	1880	21.64	21.80	1.038	0.12	0.112	0.116
05	WCDMA Band II	RMC 12.2Kbps	Right Cheek	9262	1852.4	21.23	21.80	1.140	0.09	0.357	0.407
	WCDMA Band II	RMC 12.2Kbps	Right Cheek	9538	1907.6	21.46	21.80	1.081	0.09	0.372	0.402

**<WLAN SAR>**

Plot No.	Band	Mode	Test Position	Ch.	Freq. (MHz)	Average Power (dBm)	Tune-Up Limit (dBm)	Tune-up Scaling Factor	Duty Cycle %	Duty Cycle Scaling Factor	MAX Area Scan SAR(W/kg)	Power Drift (dB)	Measured 1g SAR (W/kg)	Reported 1g SAR (W/kg)
	WLAN 2.4GHz	802.11b 1Mbps	Right Cheek	11	2462	14.92	15.50	1.143	97.63	1.024	0.225			
	WLAN 2.4GHz	802.11b 1Mbps	Right Tilted	11	2462	14.92	15.50	1.143	97.63	1.024	0.19			
	WLAN 2.4GHz	802.11b 1Mbps	Left Cheek	11	2462	14.92	15.50	1.143	97.63	1.024	0.641	0.12	0.374	0.438
	WLAN 2.4GHz	802.11b 1Mbps	Left Tilted	11	2462	14.92	15.50	1.143	97.63	1.024	0.287	0.08	0.185	0.217
06	WLAN 2.4GHz	802.11b 1Mbps	Left Cheek	1	2412	12.65	13.50	1.216	97.63	1.024		0.07	0.436	0.543
	WLAN 2.4GHz	802.11b 1Mbps	Left Cheek	6	2437	14.11	15.00	1.227	97.63	1.024		0.15	0.311	0.391

**15.2 Hotspot SAR****<GSM SAR>**

Plot No.	Band	Mode	Test Position	Gap (mm)	Ch.	Freq. (MHz)	Average Power (dBm)	Tune-Up Limit (dBm)	Tune-up Scaling Factor	Power Drift (dB)	Measured 1g SAR (W/kg)	Reported 1g SAR (W/kg)
	GSM850	GPRS (4 Tx slots)	Front	10mm	128	824.2	27.54	29.00	1.400	0.05	0.255	0.357
	GSM850	GPRS (4 Tx slots)	Back	10mm	128	824.2	27.54	29.00	1.400	0.04	0.5	0.700
	GSM850	GPRS (4 Tx slots)	Left side	10mm	128	824.2	27.54	29.00	1.400	0.05	0.398	0.557
	GSM850	GPRS (4 Tx slots)	Right side	10mm	128	824.2	27.54	29.00	1.400	0.03	0.389	0.544
	GSM850	GPRS (4 Tx slots)	Bottom side	10mm	128	824.2	27.54	29.00	1.400	0.03	0.031	0.043
	GSM850	GPRS (4 Tx slots)	Back	10mm	189	836.4	27.51	29.00	1.409	0.09	0.571	0.805
07	GSM850	GPRS (4 Tx slots)	Back	10mm	251	848.8	27.50	29.00	1.413	0.01	0.644	0.910
	GSM1900	GPRS (2 Tx slots)	Front	10mm	810	1909.8	27.01	28.00	1.256	-0.11	0.39	0.490
	GSM1900	GPRS (2 Tx slots)	Back	10mm	810	1909.8	27.01	28.00	1.256	-0.08	0.555	0.697
	GSM1900	GPRS (2 Tx slots)	Left side	10mm	810	1909.8	27.01	28.00	1.256	0.13	0.051	0.064
	GSM1900	GPRS (2 Tx slots)	Right side	10mm	810	1909.8	27.01	28.00	1.256	0.15	0.081	0.102
	GSM1900	GPRS (2 Tx slots)	Bottom side	10mm	810	1909.8	27.01	28.00	1.256	-0.04	0.583	0.732
	GSM1900	GPRS (2 Tx slots)	Back	10mm	512	1850.2	26.85	28.00	1.303	0.18	0.804	1.048
	GSM1900	GPRS (2 Tx slots)	Back	10mm	661	1880	26.88	28.00	1.294	0.02	0.622	0.805
08	GSM1900	GPRS (2 Tx slots)	Bottom side	10mm	512	1850.2	26.85	28.00	1.303	-0.01	0.822	1.071
	GSM1900	GPRS (2 Tx slots)	Bottom side	10mm	661	1880	26.88	28.00	1.294	0.11	0.648	0.839

<WCDMA SAR>

Plot No.	Band	Mode	Test Position	Gap (mm)	Ch.	Freq. (MHz)	Average Power (dBm)	Tune-Up Limit (dBm)	Tune-up Scaling Factor	Power Drift (dB)	Measured 1g SAR (W/kg)	Reported 1g SAR (W/kg)
	WCDMA Band V	RMC12.2Kbps	Front	10mm	4182	836.4	23.89	24.00	1.026	-0.01	0.483	0.495
	WCDMA Band V	RMC12.2Kbps	Back	10mm	4182	836.4	23.89	24.00	1.026	0.01	0.782	0.802
	WCDMA Band V	RMC12.2Kbps	Left side	10mm	4182	836.4	23.89	24.00	1.026	0.04	0.717	0.735
	WCDMA Band V	RMC12.2Kbps	Right side	10mm	4182	836.4	23.89	24.00	1.026	0.02	0.686	0.704
	WCDMA Band V	RMC12.2Kbps	Bottom side	10mm	4182	836.4	23.89	24.00	1.026	-0.09	0.047	0.048
	WCDMA Band V	RMC12.2Kbps	Back	10mm	4132	826.4	23.58	24.00	1.102	0.04	0.719	0.792
09	WCDMA Band V	RMC12.2Kbps	Back	10mm	4233	846.6	23.88	24.00	1.028	0.01	0.814	0.837
	WCDMA Band IV	RMC12.2Kbps	Front	10mm	1413	1732.6	21.50	21.80	1.072	0.02	0.474	0.508
	WCDMA Band IV	RMC12.2Kbps	Back	10mm	1413	1732.6	21.50	21.80	1.072	0.05	0.964	1.033
	WCDMA Band IV	RMC12.2Kbps	Left side	10mm	1413	1732.6	21.50	21.80	1.072	-0.17	0.058	0.062
	WCDMA Band IV	RMC12.2Kbps	Right side	10mm	1413	1732.6	21.50	21.80	1.072	0.11	0.068	0.073
	WCDMA Band IV	RMC12.2Kbps	Bottom side	10mm	1413	1732.6	21.50	21.80	1.072	0.09	0.689	0.738
	WCDMA Band IV	RMC12.2Kbps	Back	10mm	1312	1712.4	21.22	21.80	1.143	0.11	1.04	1.189
10	WCDMA Band IV	RMC12.2Kbps	Back	10mm	1513	1752.6	21.46	21.80	1.081	0.13	1.19	1.287
	WCDMA Band II	RMC12.2Kbps	Front	10mm	9400	1880	21.64	21.80	1.038	-0.02	0.604	0.627
	WCDMA Band II	RMC12.2Kbps	Back	10mm	9400	1880	21.64	21.80	1.038	0.01	0.878	0.911
	WCDMA Band II	RMC12.2Kbps	Left side	10mm	9400	1880	21.64	21.80	1.038	-0.08	0.072	0.075
	WCDMA Band II	RMC12.2Kbps	Right side	10mm	9400	1880	21.64	21.80	1.038	0.13	0.112	0.116
	WCDMA Band II	RMC12.2Kbps	Bottom side	10mm	9400	1880	21.64	21.80	1.038	-0.03	0.868	0.901
11	WCDMA Band II	RMC12.2Kbps	Back	10mm	9262	1852.4	21.23	21.80	1.140	0.06	1.08	1.231
	WCDMA Band II	RMC12.2Kbps	Back	10mm	9538	1907.6	21.46	21.80	1.081	-0.03	0.727	0.786
	WCDMA Band II	RMC12.2Kbps	Bottom side	10mm	9262	1852.4	21.23	21.80	1.140	-0.02	1.08	1.231
	WCDMA Band II	RMC12.2Kbps	Bottom side	10mm	9538	1907.6	21.46	21.80	1.081	-0.06	0.774	0.837

**<WLAN SAR>**

Plot No.	Band	Mode	Test Position	Gap (mm)	Ch.	Freq. (MHz)	Average Power (dBm)	Tune-Up Limit (dBm)	Tune-up Scaling Factor	Duty Cycle %	Duty Cycle Scaling Factor	MAX Area Scan SAR(W/kg)	Power Drift (dB)	Measured 1g SAR (W/kg)	Reported 1g SAR (W/kg)
	WLAN 2.4GHz	802.11b 1Mbps	Front	10mm	11	2472	14.92	15.50	1.143	97.63	1.024	0.0947			
	WLAN 2.4GHz	802.11b 1Mbps	Back	10mm	11	2472	14.92	15.50	1.143	97.63	1.024	0.0998	0.19	0.069	0.081
	WLAN 2.4GHz	802.11b 1Mbps	Right side	10mm	11	2472	14.92	15.50	1.143	97.63	1.024	0.0627			
	WLAN 2.4GHz	802.11b 1Mbps	Top side	10mm	11	2472	14.92	15.50	1.143	97.63	1.024	0.0451			
12	WLAN 2.4GHz	802.11b 1Mbps	Back	10mm	1	2412	12.65	13.50	1.216	97.63	1.024		0.11	0.106	0.132
	WLAN 2.4GHz	802.11b 1Mbps	Back	10mm	6	2437	14.11	15.00	1.227	97.63	1.024		0.06	0.076	0.096

15.3 Body Worn Accessory SAR

<GSM SAR>

Plot No.	Band	Mode	Test Position	Gap (mm)	Ch.	Freq. (MHz)	Average Power (dBm)	Tune-Up Limit (dBm)	Tune-up Scaling Factor	Power Drift (dB)	Measured 1g SAR (W/kg)	Reported 1g SAR (W/kg)
	GSM850	GPRS (4 Tx slots)	Front	10mm	128	824.2	27.54	29.00	1.400	0.05	0.255	0.357
	GSM850	GPRS (4 Tx slots)	Back	10mm	128	824.2	27.54	29.00	1.400	0.01	0.484	0.677
	GSM850	GPRS (4 Tx slots)	Back	10mm	189	836.4	27.51	29.00	1.409	-0.04	0.525	0.740
07	GSM850	GPRS (4 Tx slots)	Back	10mm	251	848.8	27.50	29.00	1.413	0.01	0.644	0.910
	GSM1900	GPRS (2 Tx slots)	Front	10mm	810	1909.8	27.01	28.00	1.256	-0.11	0.39	0.490
	GSM1900	GPRS (2 Tx slots)	Back	10mm	810	1909.8	27.01	28.00	1.256	-0.08	0.555	0.697
13	GSM1900	GPRS (2 Tx slots)	Back	10mm	512	1850.2	26.85	28.00	1.303	0.18	0.804	1.048
	GSM1900	GPRS (2 Tx slots)	Back	10mm	661	1880	26.88	28.00	1.294	0.02	0.622	0.805

<WCDMA SAR>

Plot No.	Band	Mode	Test Position	Gap (mm)	Headset	Ch.	Freq. (MHz)	Average Power (dBm)	Tune-Up Limit (dBm)	Tune-up Scaling Factor	Power Drift (dB)	Measured 1g SAR (W/kg)	Reported 1g SAR (W/kg)
	WCDMA Band V	RMC 12.2Kbps	Front	10mm	-	4182	836.4	23.89	24.00	1.026	-0.01	0.483	0.495
	WCDMA Band V	RMC 12.2Kbps	Back	10mm	-	4182	836.4	23.89	24.00	1.026	0.01	0.782	0.802
	WCDMA Band V	RMC 12.2Kbps	Back	10mm	-	4132	826.4	23.58	24.00	1.102	0.04	0.719	0.792
09	WCDMA Band V	RMC 12.2Kbps	Back	10mm	-	4233	846.6	23.88	24.00	1.028	0.01	0.814	0.837
	WCDMA Band IV	RMC 12.2Kbps	Front	10mm	-	1413	1732.6	21.50	21.80	1.072	0.02	0.474	0.508
	WCDMA Band IV	RMC 12.2Kbps	Back	10mm	-	1413	1732.6	21.50	21.80	1.072	0.05	0.964	1.033
	WCDMA Band IV	RMC 12.2Kbps	Back	10mm	-	1312	1712.4	21.22	21.80	1.143	0.11	1.04	1.189
	WCDMA Band IV	RMC 12.2Kbps	Back	10mm	-	1513	1752.6	21.46	21.80	1.081	0.13	1.19	1.287
14	WCDMA Band IV	RMC 12.2Kbps	Back	10mm	Headset	1513	1752.6	21.46	21.80	1.081	0.03	1.21	1.309
	WCDMA Band IV	RMC 12.2Kbps	Back	10mm	Headset	1312	1712.4	21.22	21.80	1.143	-0.04	1.05	1.200
	WCDMA Band IV	RMC 12.2Kbps	Back	10mm	Headset	1413	1732.6	21.50	21.80	1.072	0.07	0.942	1.009
	WCDMA Band II	RMC 12.2Kbps	Front	10mm	-	9400	1880	21.64	21.80	1.038	-0.02	0.604	0.627
	WCDMA Band II	RMC 12.2Kbps	Back	10mm	-	9400	1880	21.64	21.80	1.038	0.01	0.878	0.911
11	WCDMA Band II	RMC 12.2Kbps	Back	10mm	-	9262	1852.4	21.23	21.80	1.140	0.06	1.08	1.231
	WCDMA Band II	RMC 12.2Kbps	Back	10mm	-	9538	1907.6	21.46	21.80	1.081	-0.03	0.727	0.786
	WCDMA Band II	RMC 12.2Kbps	Back	10mm	Headset	9262	1852.4	21.23	21.80	1.140	-0.01	1.04	1.186
	WCDMA Band II	RMC 12.2Kbps	Back	10mm	Headset	9400	1880	21.64	21.80	1.038	0.19	0.888	0.921
	WCDMA Band II	RMC 12.2Kbps	Back	10mm	Headset	9538	1907.6	21.46	21.80	1.081	0.13	0.735	0.795

<WLAN SAR>

Plot No.	Band	Mode	Test Position	Gap (mm)	Ch.	Freq. (MHz)	Average Power (dBm)	Tune-Up Limit (dBm)	Tune-up Scaling Factor	Duty Cycle %	Duty Cycle Scaling Factor	MAX Area Scan SAR(W/kg)	Power Drift (dB)	Measured 1g SAR (W/kg)	Reported 1g SAR (W/kg)
	WLAN2.4GHz	802.11b 1Mbps	Front	10mm	11	2472	14.92	15.50	1.143	97.63	1.024	0.0947			
	WLAN2.4GHz	802.11b 1Mbps	Back	10mm	11	2472	14.92	15.50	1.143	97.63	1.024	0.0998	0.19	0.069	0.081
12	WLAN2.4GHz	802.11b 1Mbps	Back	10mm	1	2412	12.65	13.50	1.216	97.63	1.024		0.11	0.106	0.132
	WLAN2.4GHz	802.11b 1Mbps	Back	10mm	6	2437	14.11	15.00	1.227	97.63	1.024		0.06	0.076	0.096

<Bluetooth SAR>

Plot No.	Band	Mode	Test Position	Gap (mm)	Ch.	Freq. (MHz)	Average Power (dBm)	Tune-Up Limit (dBm)	Tune-up Scaling Factor	Power Drift (dB)	Measured 1g SAR (W/kg)	Reported 1g SAR (W/kg)
	Bluetooth	1Mbps	Front	10mm	39	2441	9.65	10.00	1.084	-0.033	0.032	0.035
	Bluetooth	1Mbps	Back	10mm	39	2441	9.65	10.00	1.084	0.032	0.033	0.036
15	Bluetooth	1Mbps	Back	10mm	0	2402	9.25	10.00	1.189	0.04	0.033	0.039
	Bluetooth	1Mbps	Back	10mm	78	2480	9.32	10.00	1.169	0.028	0.031	0.036

15.4 Repeated SAR Measurement

No.	Band	Mode	Test Position	Gap (mm)	Headset	Ch.	Freq. (MHz)	Average Power (dBm)	Tune-Up Limit (dBm)	Tune-up Scaling Factor	Power Drift (dB)	Measured 1g SAR (W/kg)	Ratio	Reported 1g SAR (W/kg)
1st	WCDMA Band V	RMC 12.2Kbps	Back	10mm	-	4233	846.6	23.88	24.00	1.028	0.01	0.814	1	0.837
2nd	WCDMA Band V	RMC 12.2Kbps	Back	10mm	-	4233	846.6	23.88	24.00	1.028	0.01	0.807	1.009	0.830
1st	WCDMA Band II	RMC 12.2Kbps	Back	10mm	-	9262	1852.4	21.23	21.80	1.140	0.06	1.08	1	1.231
2nd	WCDMA Band II	RMC 12.2Kbps	Back	10mm	-	9262	1852.4	21.23	21.80	1.140	0.06	1.01	1.069	1.152
1st	WCDMA Band IV	RMC 12.2Kbps	Back	10mm	Headset	1513	1752.6	21.46	21.80	1.081	0.03	1.21	1	1.309
2nd	WCDMA Band IV	RMC 12.2Kbps	Back	10mm	Headset	1513	1752.6	21.46	21.80	1.081	-0.07	1.18	1.025	1.276

General Note:

1. Per KDB 865664 D01v01r04, for each frequency band, repeated SAR measurement is required only when the measured SAR is $\geq 0.8\text{W/kg}$.
2. Per KDB 865664 D01v01r04, if the ratio among the repeated measurement is ≤ 1.2 and the measured SAR $< 1.45\text{W/kg}$, only one repeated measurement is required.
3. The ratio is the difference in percentage between original and repeated *measured SAR*.
4. All measurement SAR result is scaled-up to account for tune-up tolerance and is compliant.

16. Simultaneous Transmission Analysis

NO.	Simultaneous Transmission Configurations	Portable Handset			Note
		Head	Body-worn	Hotspot	
1.	GSM Voice + WLAN2.4GHz	Yes	Yes		
2.	GPRS/EDGE + WLAN2.4GHz	Yes	Yes	Yes	Hotspot
3.	WCDMA + WLAN2.4GHz	Yes	Yes	Yes	Hotspot
4.	GSM Voice + Bluetooth		Yes		
5.	GPRS/EDGE + Bluetooth		Yes		WWAN VoIP
6.	WCDMA+ Bluetooth		Yes		WWAN VoIP

General Note:

1. This device supported VoIP in EGPRS, WCDMA (e.g. 3rd party VoIP).
2. This device 2.4GHz WLAN supports Hotspot operation.
3. WLAN and Bluetooth share the same antenna, and cannot transmit simultaneously.
4. EUT will choose each GSM and WCDMA according to the network signal condition; therefore, they will not operate simultaneously at any moment.
5. The Reported SAR summation is calculated based on the same configuration and test position.
6. Per KDB 447498 D01v06, simultaneous transmission SAR is compliant if,
 - i) Scalar SAR summation < 1.6W/kg.
 - ii) $SPLSR = (SAR1 + SAR2)^{1.5} / (\min. \text{ separation distance, mm})$, and the peak separation distance is determined from the square root of $[(x1-x2)^2 + (y1-y2)^2 + (z1-z2)^2]$, where (x1, y1, z1) and (x2, y2, z2) are the coordinates of the extrapolated peak SAR locations in the zoom scan.
 - iii) If $SPLSR \leq 0.04$, simultaneously transmission SAR measurement is not necessary.
 - iv) Simultaneously transmission SAR measurement, and the reported multi-band SAR < 1.6W/kg.

16.1 Head Exposure Conditions

WWAN Band		Exposure Position	1	2	1+2 Summed 1g SAR (W/kg)	SPLSR	Case No
			WWAN	2.4GHz WLAN			
			1g SAR (W/kg)	1g SAR (W/kg)			
GSM	GSM850	Right Cheek	0.266	0.543	0.81		
		Right Tilted	0.230	0.543	0.77		
		Left Cheek	0.459	0.543	1.00		
		Left Tilted	0.220	0.543	0.76		
	GSM1900	Right Cheek	0.328	0.543	0.87		
		Right Tilted	0.068	0.543	0.61		
		Left Cheek	0.216	0.543	0.76		
		Left Tilted	0.102	0.543	0.65		
WCDMA	WCDMA V	Right Cheek	0.489	0.543	1.03		
		Right Tilted	0.378	0.543	0.92		
		Left Cheek	0.433	0.543	0.98		
		Left Tilted	0.349	0.543	0.89		
	WCDMA IV	Right Cheek	0.192	0.543	0.74		
		Right Tilted	0.090	0.543	0.63		
		Left Cheek	0.122	0.543	0.67		
		Left Tilted	0.073	0.543	0.62		
	WCDMA II	Right Cheek	0.407	0.543	0.95		
		Right Tilted	0.085	0.543	0.63		
		Left Cheek	0.246	0.543	0.79		
		Left Tilted	0.116	0.543	0.66		

16.2 Hotspot Exposure Conditions

WWAN Band		Exposure Position	1	2	1+2 Summed 1g SAR (W/kg)	SPLSR	Case No
			WWAN	2.4GHz WLAN			
			1g SAR (W/kg)	1g SAR (W/kg)			
GSM	GSM850	Front	0.357	0.132	0.49		
		Back	0.910	0.132	1.04		
		Left side	0.557		0.56		
		Right side	0.544	0.132	0.68		
		Top side		0.132	0.13		
		Bottom side	0.043		0.04		
	GSM1900	Front	0.490	0.132	0.62		
		Back	1.048	0.132	1.18		
		Left side	0.064		0.06		
		Right side	0.102	0.132	0.23		
		Top side		0.132	0.13		
		Bottom side	1.071		1.07		
WCDMA	WCDMA V	Front	0.495	0.132	0.63		
		Back	0.837	0.132	0.97		
		Left side	0.735		0.74		
		Right side	0.704	0.132	0.84		
		Top side		0.132	0.13		
		Bottom side	0.048		0.05		
	WCDMA IV	Front	0.508	0.132	0.64		
		Back	1.287	0.132	1.42		
		Left side	0.062		0.06		
		Right side	0.073	0.132	0.21		
		Top side		0.132	0.13		
		Bottom side	0.738		0.74		
	WCDMA II	Front	0.627	0.132	0.76		
		Back	1.231	0.132	1.36		
		Left side	0.075		0.08		
		Right side	0.116	0.132	0.25		
		Top side		0.132	0.13		
		Bottom side	1.231		1.23		

16.3 Body-Worn Accessory Exposure Conditions

WWAN Band		Exposure Position	1	2	3	1+2 Summed 1g SAR (W/kg)	1+3 Summed 1g SAR (W/kg)	SPLSR	Case No
			WWAN	2.4GHz WLAN	Bluetooth				
			1g SAR (W/kg)	1g SAR (W/kg)	Estimated 1g SAR (W/kg)				
GSM	GSM850	Front	0.357	0.132	0.035	0.49	0.39		
		Back	0.910	0.132	0.039	1.04	0.95		
	GSM1900	Front	0.490	0.132	0.035	0.62	0.53		
		Back	1.048	0.132	0.039	1.18	1.09		
WCDMA	WCDMA V	Front	0.495	0.132	0.035	0.63	0.53		
		Back	0.837	0.132	0.039	0.97	0.88		
	WCDMA IV	Front	0.508	0.132	0.035	0.64	0.54		
		Back	1.287	0.132	0.039	1.42	1.33		
		Back with Headset	1.309	0.132	0.039	1.44	1.35		
	WCDMA II	Front	0.627	0.132	0.035	0.76	0.66		
		Back	1.231	0.132	0.039	1.36	1.27		
		Back with Headset	1.186	0.132	0.039	1.32	1.23		

Test Engineer : Kat Yin

17. Uncertainty Assessment

The component of uncertainty may generally be categorized according to the methods used to evaluate them. The evaluation of uncertainty by the statistical analysis of a series of observations is termed a Type A evaluation of uncertainty. The evaluation of uncertainty by means other than the statistical analysis of a series of observation is termed a Type B evaluation of uncertainty. Each component of uncertainty, however evaluated, is represented by an estimated standard deviation, termed standard uncertainty, which is determined by the positive square root of the estimated variance.

A Type A evaluation of standard uncertainty may be based on any valid statistical method for treating data. This includes calculating the standard deviation of the mean of a series of independent observations; using the method of least squares to fit a curve to the data in order to estimate the parameter of the curve and their standard deviations; or carrying out an analysis of variance in order to identify and quantify random effects in certain kinds of measurement.

A type B evaluation of standard uncertainty is typically based on scientific judgment using all of the relevant information available. These may include previous measurement data, experience, and knowledge of the behavior and properties of relevant materials and instruments, manufacture's specification, data provided in calibration reports and uncertainties assigned to reference data taken from handbooks. Broadly speaking, the uncertainty is either obtained from an outdoor source or obtained from an assumed distribution, such as the normal distribution, rectangular or triangular distributions indicated in table below.

Uncertainty Distributions	Normal	Rectangular	Triangular	U-Shape
Multi-plying Factor ^(a)	1/ κ ^(b)	1/ $\sqrt{3}$	1/ $\sqrt{6}$	1/ $\sqrt{2}$

(a) standard uncertainty is determined as the product of the multiplying factor and the estimated range of variations in the measured quantity

(b) κ is the coverage factor

Table 17.1. Standard Uncertainty for Assumed Distribution

The combined standard uncertainty of the measurement result represents the estimated standard deviation of the result. It is obtained by combining the individual standard uncertainties of both Type A and Type B evaluation using the usual "root-sum-squares" (RSS) methods of combining standard deviations by taking the positive square root of the estimated variances.

Expanded uncertainty is a measure of uncertainty that defines an interval about the measurement result within which the measured value is confidently believed to lie. It is obtained by multiplying the combined standard uncertainty by a coverage factor. Typically, the coverage factor ranges from 2 to 3. Using a coverage factor allows the true value of a measured quantity to be specified with a defined probability within the specified uncertainty range. For purpose of this document, a coverage factor two is used, which corresponds to confidence interval of about 95 %. The DASY uncertainty Budget is shown in the following tables.

Error Description	Uncertainty Value (±%)	Probability	Divisor	(Ci) 1g	(Ci) 10g	Standard Uncertainty (1g) (±%)	Standard Uncertainty (10g) (±%)
Measurement System							
Probe Calibration	6.0	N	1	1	1	6.0	6.0
Axial Isotropy	4.7	R	1.732	0.7	0.7	1.9	1.9
Hemispherical Isotropy	9.6	R	1.732	0.7	0.7	3.9	3.9
Boundary Effects	1.0	R	1.732	1	1	0.6	0.6
Linearity	4.7	R	1.732	1	1	2.7	2.7
System Detection Limits	1.0	R	1.732	1	1	0.6	0.6
Modulation Response	3.2	R	1.732	1	1	1.8	1.8
Readout Electronics	0.3	N	1	1	1	0.3	0.3
Response Time	0.0	R	1.732	1	1	0.0	0.0
Integration Time	2.6	R	1.732	1	1	1.5	1.5
RF Ambient Noise	3.0	R	1.732	1	1	1.7	1.7
RF Ambient Reflections	3.0	R	1.732	1	1	1.7	1.7
Probe Positioner	0.4	R	1.732	1	1	0.2	0.2
Probe Positioning	2.9	R	1.732	1	1	1.7	1.7
Max. SAR Eval.	2.0	R	1.732	1	1	1.2	1.2
Test Sample Related							
Device Positioning	3.0	N	1	1	1	3.0	3.0
Device Holder	3.6	N	1	1	1	3.6	3.6
Power Drift	5.0	R	1.732	1	1	2.9	2.9
Power Scaling	0.0	R	1.732	1	1	0.0	0.0
Phantom and Setup							
Phantom Uncertainty	6.1	R	1.732	1	1	3.5	3.5
SAR correction	0.0	R	1.732	1	0.84	0.0	0.0
Liquid Conductivity Repeatability	0.2	N	1	0.78	0.71	0.1	0.1
Liquid Conductivity (target)	5.0	R	1.732	0.78	0.71	2.3	2.0
Liquid Conductivity (mea.)	2.5	R	1.732	0.78	0.71	1.1	1.0
Temp. unc. - Conductivity	3.4	R	1.732	0.78	0.71	1.5	1.4
Liquid Permittivity Repeatability	0.15	N	1	0.23	0.26	0.0	0.0
Liquid Permittivity (target)	5.0	R	1.732	0.23	0.26	0.7	0.8
Liquid Permittivity (mea.)	2.5	R	1.732	0.23	0.26	0.3	0.4
Temp. unc. - Permittivity	0.83	R	1.732	0.23	0.26	0.1	0.1
Combined Std. Uncertainty						11.4%	11.4%
Coverage Factor for 95 %						K=2	K=2
Expanded STD Uncertainty						22.9%	22.7%

Table 17.2. Uncertainty Budget for frequency range 300 MHz to 3 GHz

18. References

- [1] FCC 47 CFR Part 2 "Frequency Allocations and Radio Treaty Matters; General Rules and Regulations"
- [2] ANSI/IEEE Std. C95.1-1992, "IEEE Standard for Safety Levels with Respect to Human Exposure to Radio Frequency Electromagnetic Fields, 3 kHz to 300 GHz", September 1992
- [3] IEEE Std. 1528-2013, "IEEE Recommended Practice for Determining the Peak Spatial-Average Specific Absorption Rate (SAR) in the Human Head from Wireless Communications Devices: Measurement Techniques", Sep 2013
- [4] SPEAG DASY System Handbook
- [5] FCC KDB 248227 D01 v02r02, "SAR Guidance for IEEE 802.11 (WiFi) Transmitters", Oct 2015.
- [6] FCC KDB 447498 D01 v06, "Mobile and Portable Device RF Exposure Procedures and Equipment Authorization Policies", Oct 2015
- [7] FCC KDB 648474 D04 v01r03, "SAR Evaluation Considerations for Wireless Handsets", Oct 2015.
- [8] FCC KDB 941225 D01 v03r01, "3G SAR MEAUREMENT PROCEDURES", Oct 2015
- [9] FCC KDB 941225 D06 v02r01, "SAR Evaluation Procedures for Portable Devices with Wireless Router Capabilities", Oct 2015.
- [10] FCC KDB 865664 D01 v01r04, "SAR Measurement Requirements for 100 MHz to 6 GHz", Aug 2015.
- [11] FCC KDB 865664 D02 v01r02, "RF Exposure Compliance Reporting and Documentation Considerations" Oct 2015.



Appendix A. Plots of System Performance Check

The plots are shown as follows.

System Check_Head_835MHz_20151108

DUT: Dipole 835 MHz D835V2

Communication System: UID 0, CW; Frequency: 835 MHz; Duty Cycle: 1:1

Medium: HSL_835_2015/11/08 Medium parameters used: $f = 835 \text{ MHz}$; $\sigma = 0.907 \text{ S/m}$; $\epsilon_r = 42.283$;
 $\rho = 1000 \text{ kg/m}^3$

Ambient Temperature : $23.5 \text{ }^{\circ}\text{C}$; Liquid Temperature : $22.5 \text{ }^{\circ}\text{C}$

DASY5 Configuration:

- Probe: EX3DV4 - SN3911; ConvF(9.75, 9.75, 9.75); Calibrated: 2015/10/1;
- Sensor-Surface: 2mm (Mechanical Surface Detection)
- Electronics: DAE4 Sn1358; Calibrated: 2015/8/27
- Phantom: SAM1; Type: QD000P40CD; Serial: TP:1753
- Measurement SW: DASY52, Version 52.8 (8); SEMCAD X Version 14.6.10 (7331)

Pin=250mW/Area Scan (61x61x1): Interpolated grid: $dx=15\text{mm}$, $dy=15\text{mm}$

Maximum value of SAR (interpolated) = 2.83 W/kg

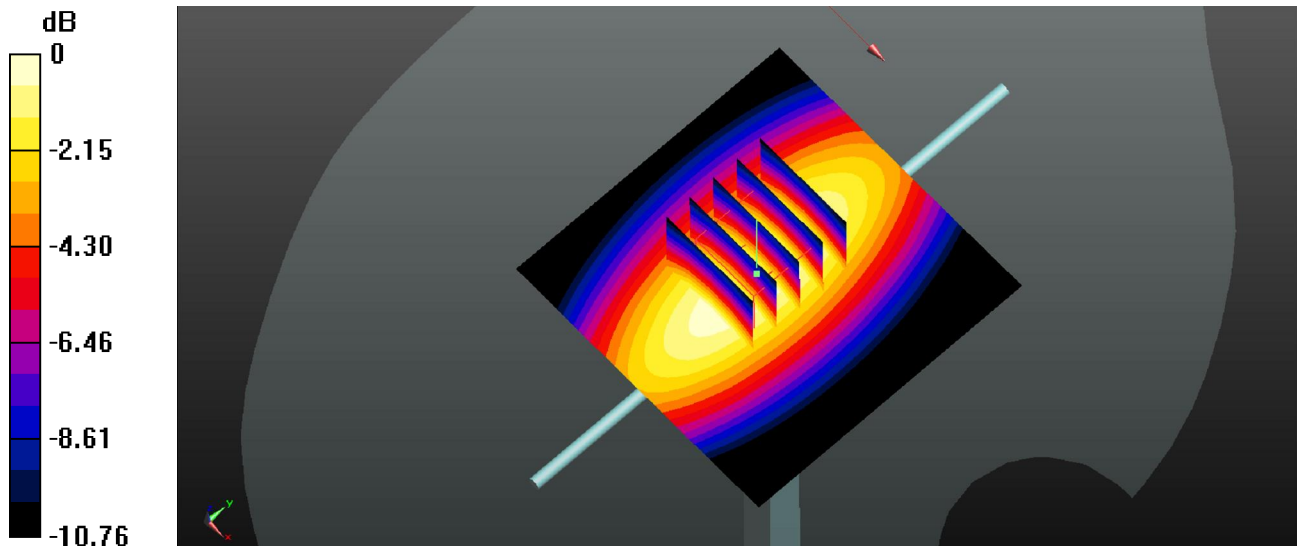
Pin=250mW/Zoom Scan (5x5x7)/Cube 0: Measurement grid: $dx=8\text{mm}$, $dy=8\text{mm}$, $dz=5\text{mm}$

Reference Value = 53.48 V/m ; Power Drift = 0.02 dB

Peak SAR (extrapolated) = 3.30 W/kg

SAR(1 g) = 2.24 W/kg ; SAR(10 g) = 1.47 W/kg

Maximum value of SAR (measured) = 2.83 W/kg



0 dB = 2.83 W/kg

System Check_Head_1750MHz_20151107

DUT: Dipole 1750 MHz D1750V2

Communication System: UID 0, CW; Frequency: 1750 MHz; Duty Cycle: 1:1

Medium: HSL_1750_2015/11/07 Medium parameters used: $f = 1750$ MHz; $\sigma = 1.363$ S/m; $\epsilon_r = 41.313$; $\rho = 1000$ kg/m³

Ambient Temperature : 23.5 °C ; Liquid Temperature : 22.6 °C

DASY5 Configuration:

- Probe: EX3DV4 - SN3911; ConvF(8.41, 8.41, 8.41); Calibrated: 2015/10/1;
- Sensor-Surface: 2mm (Mechanical Surface Detection)
- Electronics: DAE4 Sn1358; Calibrated: 2015/8/27
- Phantom: SAM1; Type: QD000P40CD; Serial: TP:1753
- Measurement SW: DASY52, Version 52.8 (8); SEMCAD X Version 14.6.10 (7331)

Pin=250mW/Area Scan (61x61x1): Interpolated grid: dx=15mm, dy=15mm

Maximum value of SAR (interpolated) = 12.4 W/kg

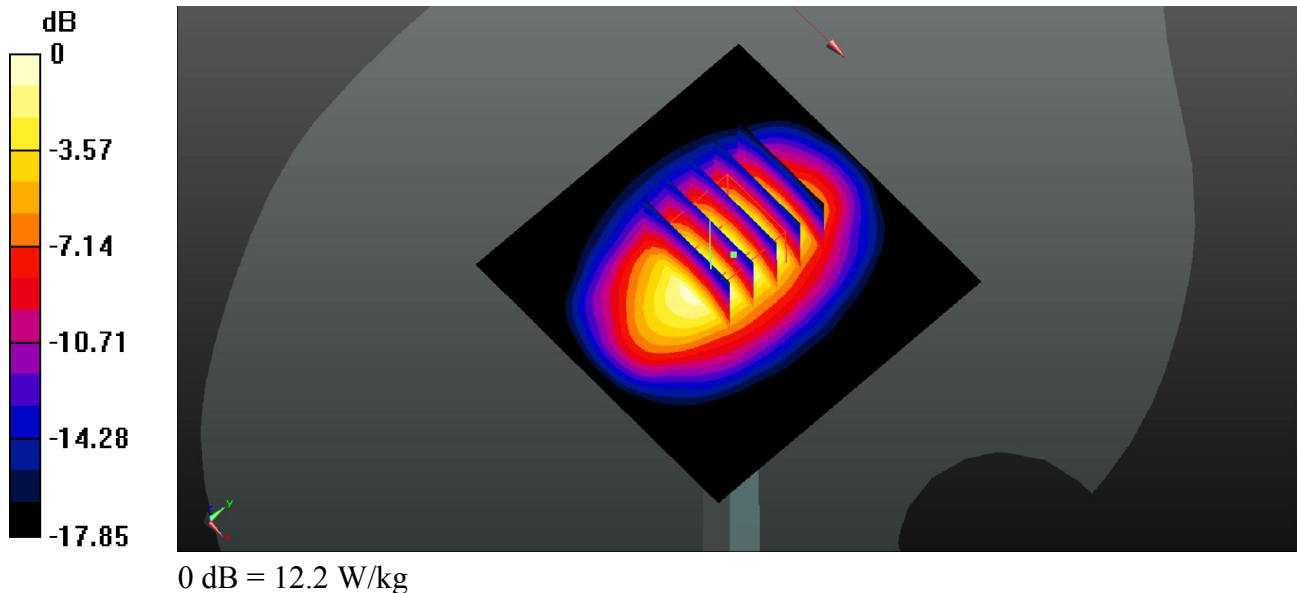
Pin=250mW/Zoom Scan (5x5x7)/Cube 0: Measurement grid: dx=8mm, dy=8mm, dz=5mm

Reference Value = 93.68 V/m; Power Drift = 0.12 dB

Peak SAR (extrapolated) = 15.7 W/kg

SAR(1 g) = 9.27 W/kg; SAR(10 g) = 4.67 W/kg

Maximum value of SAR (measured) = 12.2 W/kg



System Check_Head_1900MHz_20151108**DUT: Dipole 1900 MHz D1900V2**

Communication System: UID 0, CW; Frequency: 1900 MHz; Duty Cycle: 1:1

Medium: HSL_1900_2015/11/08 Medium parameters used: $f = 1900$ MHz; $\sigma = 1.412$ S/m; $\epsilon_r = 39.311$; $\rho = 1000$ kg/m³

Ambient Temperature : 23.8 °C ; Liquid Temperature : 22.4 °C

DASY5 Configuration:

- Probe: EX3DV4 - SN3911; ConvF(8.12, 8.12, 8.12); Calibrated: 2015/10/1;
- Sensor-Surface: 2mm (Mechanical Surface Detection)
- Electronics: DAE4 Sn1358; Calibrated: 2015/8/27
- Phantom: SAM2; Type: QD000P40CD; Serial: TP:1754
- Measurement SW: DASY52, Version 52.8 (8); SEMCAD X Version 14.6.10 (7331)

Pin=250mW/Area Scan (61x61x1): Interpolated grid: dx=15mm, dy=15mm

Maximum value of SAR (interpolated) = 13.7 W/kg

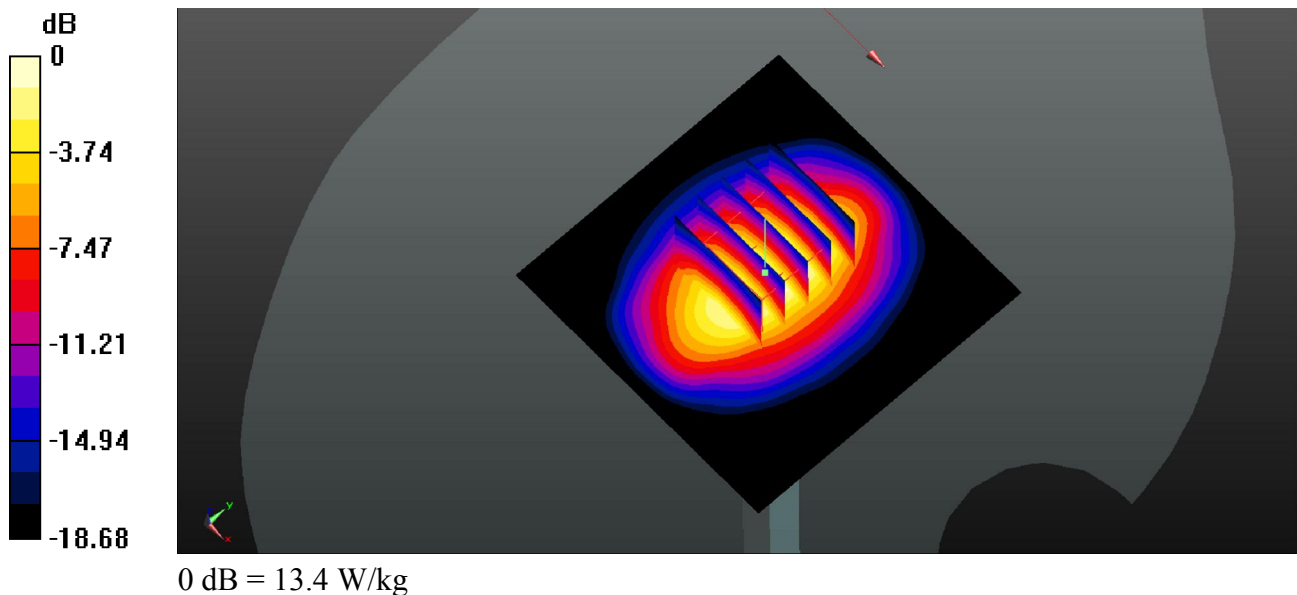
Pin=250mW/Zoom Scan (5x5x7)/Cube 0: Measurement grid: dx=8mm, dy=8mm, dz=5mm

Reference Value = 98.85 V/m; Power Drift = 0.08 dB

Peak SAR (extrapolated) = 17.7 W/kg

SAR(1 g) = 9.57 W/kg; SAR(10 g) = 4.93 W/kg

Maximum value of SAR (measured) = 13.4 W/kg



System Check_Head_2450MHz_20151109**DUT: Dipole 2450 MHz D2450V2**

Communication System: UID 0, CW; Frequency: 2450 MHz; Duty Cycle: 1:1

Medium: HSL_2450_2015/11/09 Medium parameters used: $f = 2450$ MHz; $\sigma = 1.833$ S/m; $\epsilon_r = 37.683$; $\rho = 1000$ kg/m³

Ambient Temperature : 23.7 °C ; Liquid Temperature : 22.3 °C

DASY5 Configuration:

- Probe: EX3DV4 - SN3911; ConvF(7.31, 7.31, 7.31); Calibrated: 2015/10/1;
- Sensor-Surface: 2mm (Mechanical Surface Detection)
- Electronics: DAE4 Sn1358; Calibrated: 2015/8/27
- Phantom: SAM1; Type: QD000P40CD; Serial: TP:1753
- Measurement SW: DASY52, Version 52.8 (8); SEMCAD X Version 14.6.10 (7331)

Pin=250mW/Area Scan (71x71x1): Interpolated grid: dx=12mm, dy=12mm

Maximum value of SAR (interpolated) = 21.6 W/kg

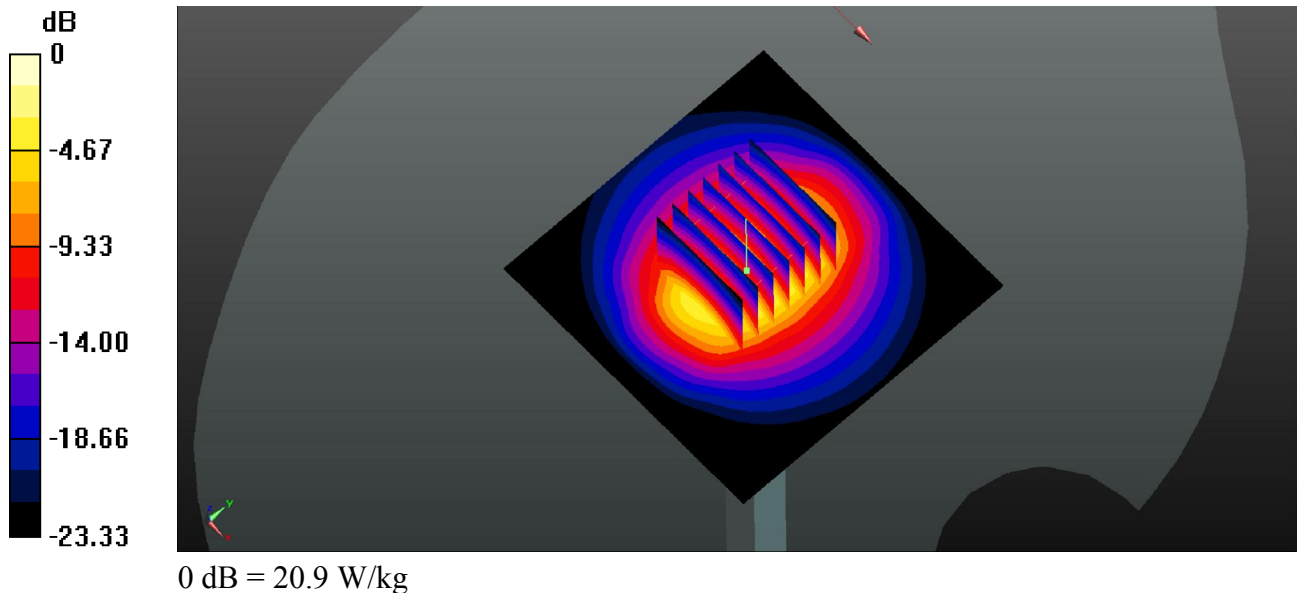
Pin=250mW/Zoom Scan (7x7x7)/Cube 0: Measurement grid: dx=5mm, dy=5mm, dz=5mm

Reference Value = 90.10 V/m; Power Drift = 0.04 dB

Peak SAR (extrapolated) = 28.4 W/kg

SAR(1 g) = 13.5 W/kg; SAR(10 g) = 6.13 W/kg

Maximum value of SAR (measured) = 20.9 W/kg



System Check_Body_835MHz_20151107

DUT: Dipole 835 MHz D835V2

Communication System: UID 0, CW; Frequency: 835 MHz; Duty Cycle: 1:1

Medium: MSL_835_2015/11/07 Medium parameters used: $f = 835$ MHz; $\sigma = 1.013$ S/m; $\epsilon_r = 55.937$;
 $\rho = 1000$ kg/m³

Ambient Temperature : 23.4 °C; Liquid Temperature : 22.3 °C

DASY5 Configuration:

- Probe: EX3DV4 - SN3911; ConvF(9.8, 9.8, 9.8); Calibrated: 2015/10/1;
- Sensor-Surface: 2mm (Mechanical Surface Detection)
- Electronics: DAE4 Sn1358; Calibrated: 2015/8/27
- Phantom: SAM1; Type: QD000P40CD; Serial: TP:1753
- Measurement SW: DASY52, Version 52.8 (8); SEMCAD X Version 14.6.10 (7331)

Pin=250mW/Area Scan (61x61x1): Interpolated grid: dx=15mm, dy=15mm

Maximum value of SAR (interpolated) = 2.92 W/kg

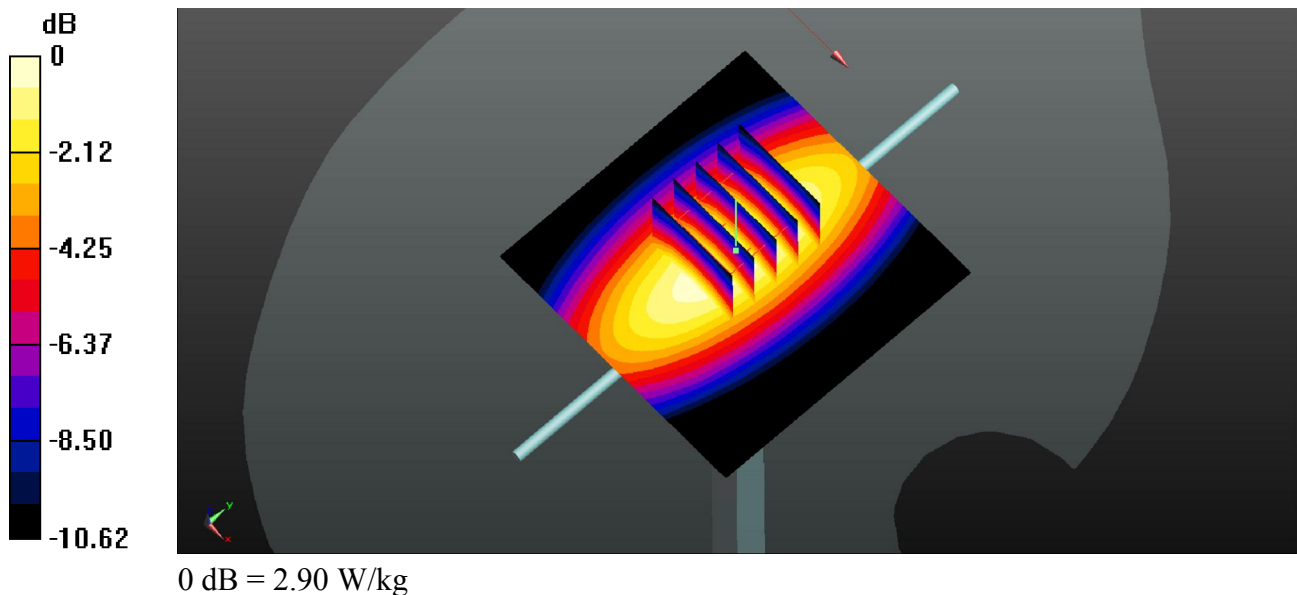
Pin=250mW/Zoom Scan (5x5x7)/Cube 0: Measurement grid: dx=8mm, dy=8mm, dz=5mm

Reference Value = 49.21 V/m; Power Drift = 0.01 dB

Peak SAR (extrapolated) = 3.39 W/kg

SAR(1 g) = 2.31 W/kg; SAR(10 g) = 1.52 W/kg

Maximum value of SAR (measured) = 2.90 W/kg



System Check_Body_1750MHz_20151107

DUT: Dipole 1750 MHz D1750V2

Communication System: UID 0, CW; Frequency: 1750 MHz; Duty Cycle: 1:1

Medium: MSL_1750_2015/11/07 Medium parameters used: $f = 1750$ MHz; $\sigma = 1.507$ S/m; $\epsilon_r = 54.123$; $\rho = 1000$ kg/m³

Ambient Temperature : 23.7 °C ; Liquid Temperature : 22.3 °C

DASY5 Configuration:

- Probe: EX3DV4 - SN3911; ConvF(8.01, 8.01, 8.01); Calibrated: 2015/10/1;
- Sensor-Surface: 2mm (Mechanical Surface Detection)
- Electronics: DAE4 Sn1358; Calibrated: 2015/8/27
- Phantom: SAM2; Type: QD000P40CD; Serial: TP:1754
- Measurement SW: DASY52, Version 52.8 (8); SEMCAD X Version 14.6.10 (7331)

Pin=250mW/Area Scan (61x61x1): Interpolated grid: dx=15mm, dy=15mm

Maximum value of SAR (interpolated) = 13.2 W/kg

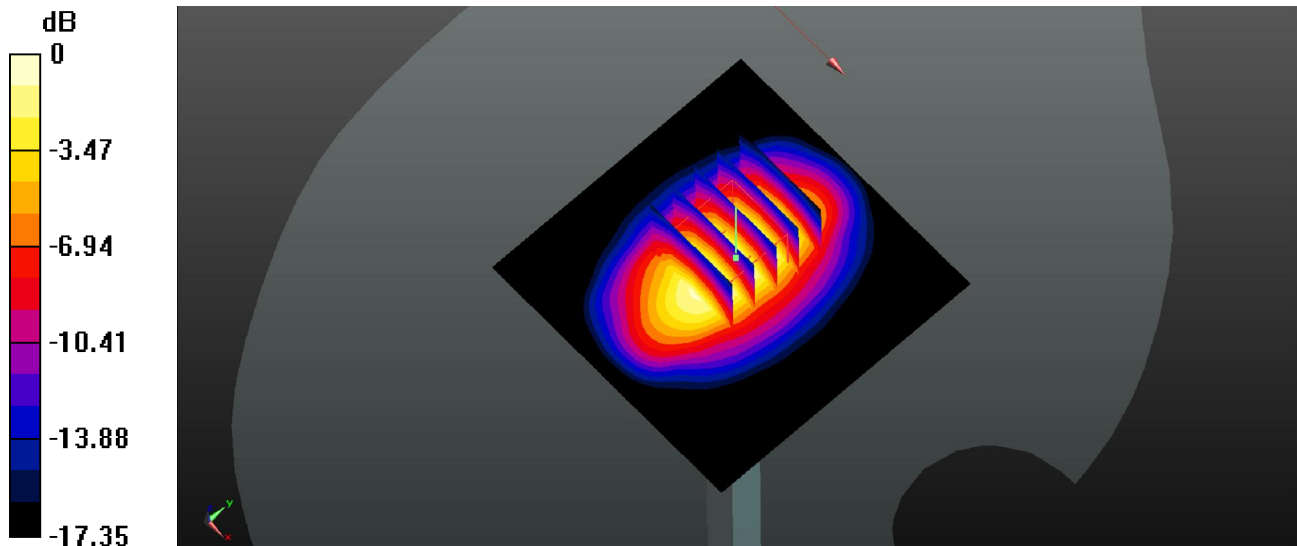
Pin=250mW/Zoom Scan (5x5x7)/Cube 0: Measurement grid: dx=8mm, dy=8mm, dz=5mm

Reference Value = 92.33 V/m; Power Drift = 0.12 dB

Peak SAR (extrapolated) = 16.6 W/kg

SAR(1 g) = 9.45 W/kg; SAR(10 g) = 5.02 W/kg

Maximum value of SAR (measured) = 13.0 W/kg



0 dB = 13.0 W/kg

System Check_Body_1900MHz_20151106

DUT: Dipole 1900 MHz D1900V2

Communication System: UID 0, CW; Frequency: 1900 MHz; Duty Cycle: 1:1

Medium: MSL_1900_2015/11/06 Medium parameters used: $f = 1900$ MHz; $\sigma = 1.572$ S/m; $\epsilon_r = 52.321$; $\rho = 1000$ kg/m³

Ambient Temperature : 23.9 °C ; Liquid Temperature : 22.5 °C

DASY5 Configuration:

- Probe: EX3DV4 - SN3911; ConvF(7.75, 7.75, 7.75); Calibrated: 2015/10/1;
- Sensor-Surface: 2mm (Mechanical Surface Detection)
- Electronics: DAE4 Sn1358; Calibrated: 2015/8/27
- Phantom: SAM1; Type: QD000P40CD; Serial: TP:1753
- Measurement SW: DASY52, Version 52.8 (8); SEMCAD X Version 14.6.10 (7331)

Pin=250mW/Area Scan (61x61x1): Interpolated grid: dx=15mm, dy=15mm

Maximum value of SAR (interpolated) = 14.2 W/kg

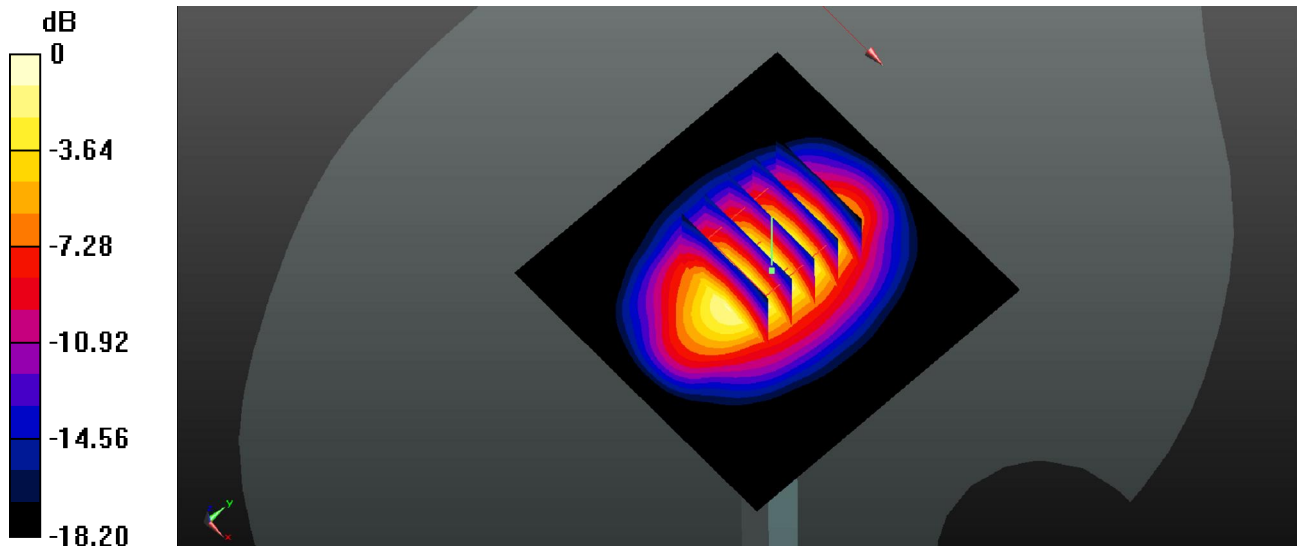
Pin=250mW/Zoom Scan (5x5x7)/Cube 0: Measurement grid: dx=8mm, dy=8mm, dz=5mm

Reference Value = 83.40 V/m; Power Drift = 0.08 dB

Peak SAR (extrapolated) = 18.1 W/kg

SAR(1 g) = 10 W/kg; SAR(10 g) = 5.19 W/kg

Maximum value of SAR (measured) = 14.2 W/kg



0 dB = 14.2 W/kg

System Check_Body_2450MHz_150901**DUT: D2450V2 - SN:840**

Communication System: CW; Frequency: 2450 MHz; Duty Cycle: 1:1

Medium: MSL_2450_150901 Medium parameters used: $f = 2450$ MHz; $\sigma = 1.931$ mho/m; $\epsilon_r =$

51.252 ; $\rho = 1000$ kg/m³

Ambient Temperature : 23.7 °C ; Liquid Temperature : 22.8 °C

DASY5 Configuration:

- Probe: EX3DV4 - SN3857; ConvF(7.29, 7.29, 7.29); Calibrated: 2015.05.28
- Sensor-Surface: 2mm (Mechanical Surface Detection)
- Electronics: DAE4 Sn1210; Calibrated: 2015.05.21
- Phantom: SAM1; Type: SAM; Serial: TP-1477
- Measurement SW: DASY52, Version 52.8 (8); SEMCAD X Version 14.4.5 (3634)

Pin=250mW/Area Scan (81x81x1): Measurement grid: dx=12mm, dy=12mm

Maximum value of SAR (interpolated) = 20.025 mW/g

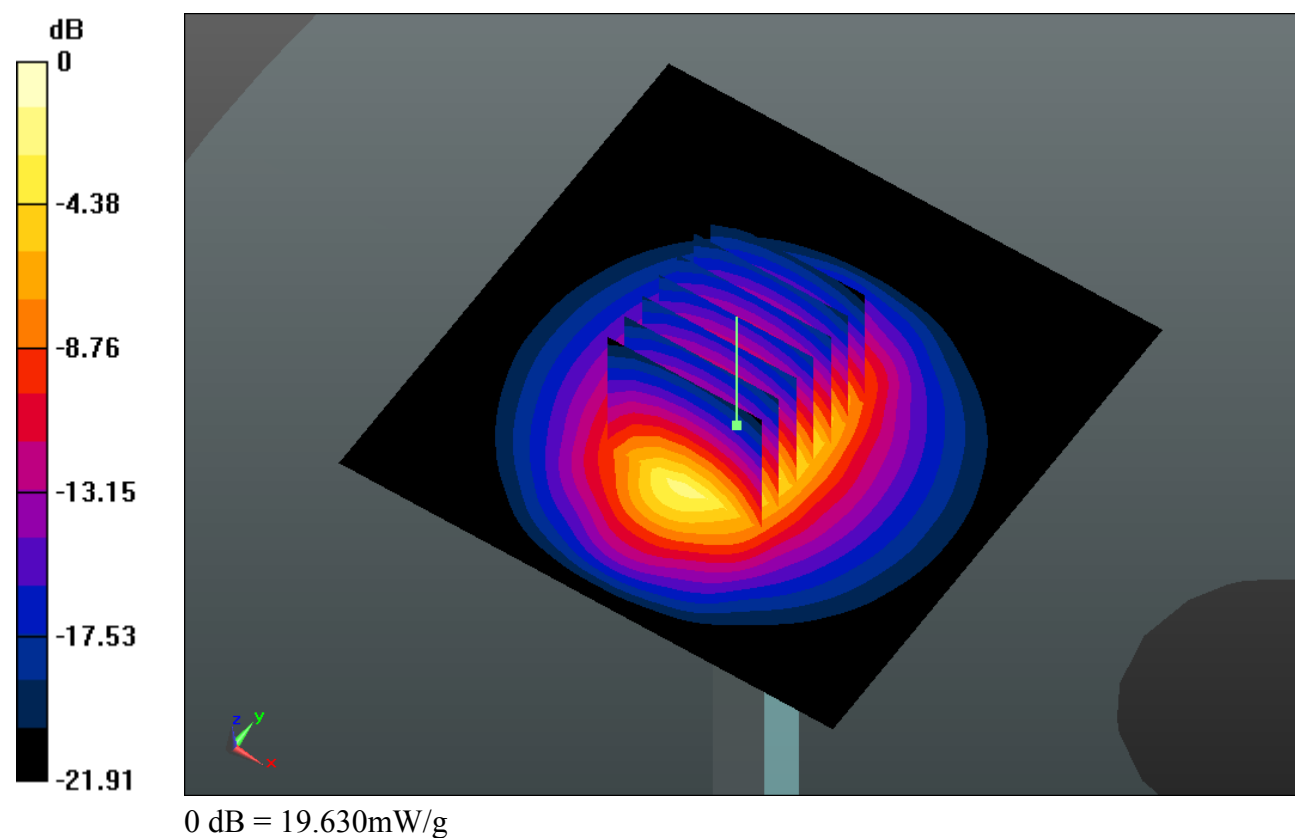
Pin=250mW/Zoom Scan (7x7x7)/Cube 0: Measurement grid: dx=5mm, dy=5mm, dz=5mm

Reference Value = 85.621 V/m; Power Drift = 0.03 dB

Peak SAR (extrapolated) = 26.619 W/kg

SAR(1 g) = 12.9 mW/g; SAR(10 g) = 6 mW/g

Maximum value of SAR (measured) = 19.630 mW/g



System Check_Body_2450MHz_20151109**DUT: Dipole 2450 MHz D2450V2**

Communication System: UID 0, CW; Frequency: 2450 MHz; Duty Cycle: 1:1

Medium: MSL_2450_2015/11/09 Medium parameters used: $f = 2450$ MHz; $\sigma = 1.94$ S/m; $\epsilon_r = 53.374$; $\rho = 1000$ kg/m³

Ambient Temperature : 23.5 °C ; Liquid Temperature : 22.6 °C

DASY5 Configuration:

- Probe: EX3DV4 - SN3911; ConvF(7.34, 7.34, 7.34); Calibrated: 2015/10/1;
- Sensor-Surface: 2mm (Mechanical Surface Detection)
- Electronics: DAE4 Sn1358; Calibrated: 2015/8/27
- Phantom: SAM2; Type: QD000P40CD; Serial: TP:1754
- Measurement SW: DASY52, Version 52.8 (8); SEMCAD X Version 14.6.10 (7331)

Pin=250mW/Area Scan (81x81x1): Interpolated grid: dx=12mm, dy=12mm

Maximum value of SAR (interpolated) = 18.3 W/kg

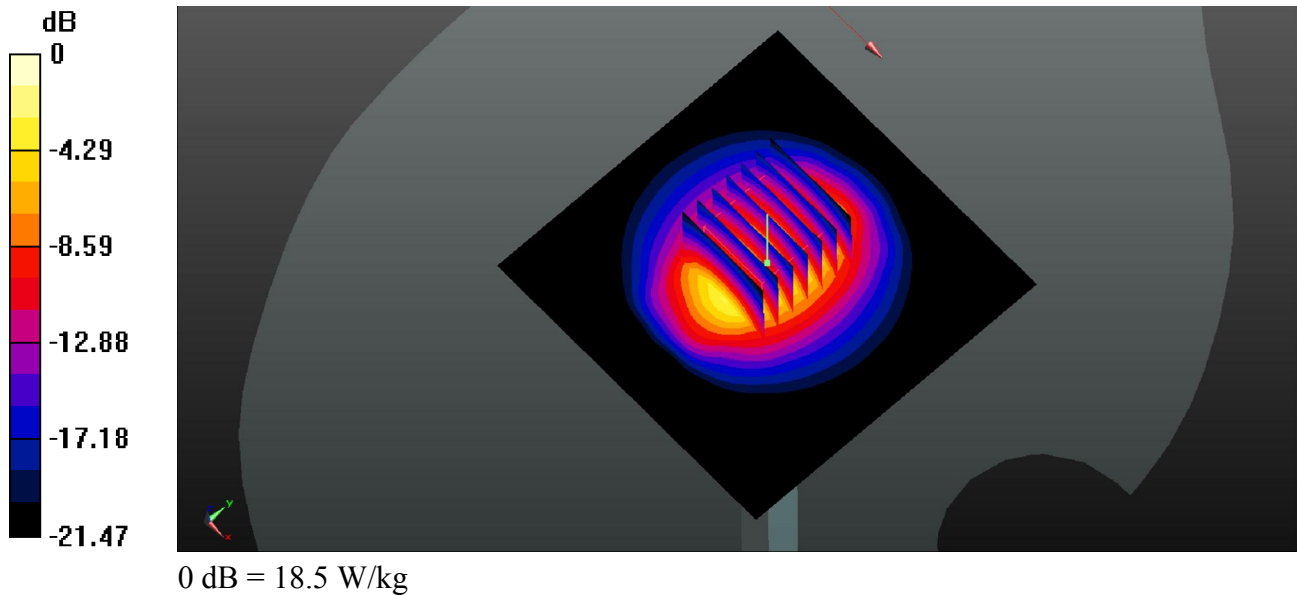
Pin=250mW/Zoom Scan (7x7x7)/Cube 0: Measurement grid: dx=5mm, dy=5mm, dz=5mm

Reference Value = 82.02 V/m; Power Drift = 0.10 dB

Peak SAR (extrapolated) = 24.5 W/kg

SAR(1 g) = 12.2 W/kg; SAR(10 g) = 5.68 W/kg

Maximum value of SAR (measured) = 18.5 W/kg





Appendix B. Plots of High SAR Measurement

The plots are shown as follows.

01_GSM850_GPRS (4 Tx slots)_Left Cheek_Ch251

Communication System: UID 0, GPRS (GMSK 4 Tx slot) (0); Frequency: 848.8 MHz; Duty Cycle: 1:2.08

Medium: HSL_835_2015/11/08 Medium parameters used: $f = 848.8$ MHz; $\sigma = 0.92$ S/m; $\epsilon_r = 42.122$; $\rho = 1000$ kg/m³

Ambient Temperature : 23.5 °C; Liquid Temperature : 22.5 °C

DASY5 Configuration:

- Probe: EX3DV4 - SN3911; ConvF(9.75, 9.75, 9.75); Calibrated: 2015/10/1;
- Sensor-Surface: 2mm (Mechanical Surface Detection)
- Electronics: DAE4 Sn1358; Calibrated: 2015/8/27
- Phantom: SAM1; Type: QD000P40CD; Serial: TP:1753
- Measurement SW: DASY52, Version 52.8 (8); SEMCAD X Version 14.6.10 (7331)

Ch251/Area Scan (61x111x1): Interpolated grid: dx=15mm, dy=15mm

Maximum value of SAR (interpolated) = 0.364 W/kg

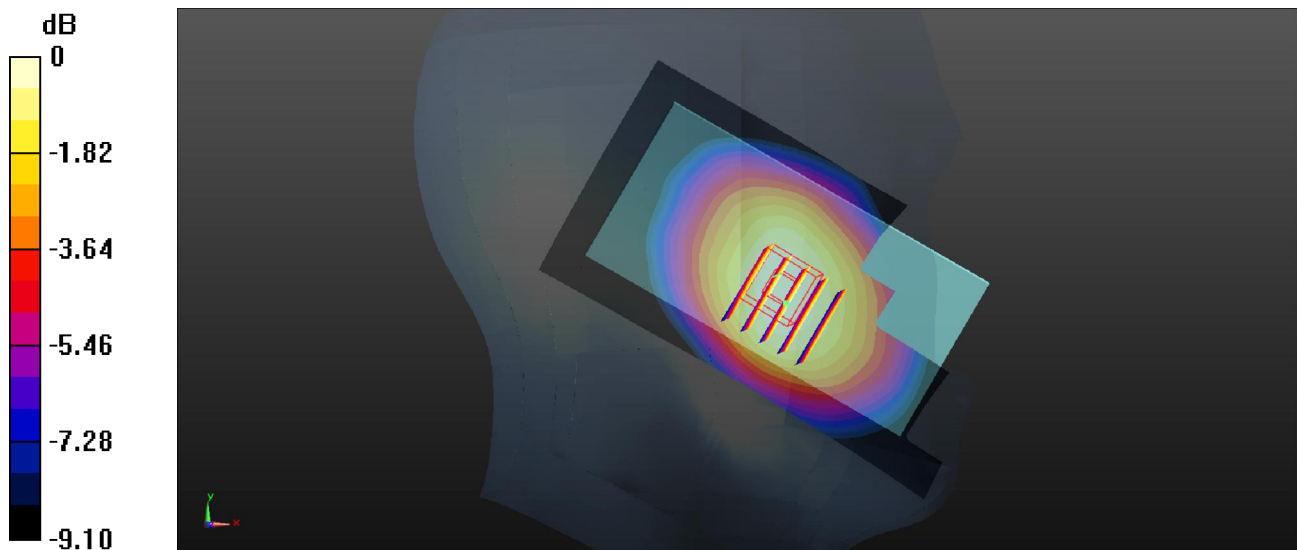
Ch251/Zoom Scan (5x5x7)/Cube 0: Measurement grid: dx=8mm, dy=8mm, dz=5mm

Reference Value = 6.337 V/m; Power Drift = 0.07 dB

Peak SAR (extrapolated) = 0.398 W/kg

SAR(1 g) = 0.325 W/kg; SAR(10 g) = 0.248 W/kg

Maximum value of SAR (measured) = 0.366 W/kg



0 dB = 0.366 W/kg

02_GSM1900_GPRS (2 Tx slots)_Right Cheek_Ch810

Communication System: UID 0, GPRS (GMSK 2 Tx slot) (0); Frequency: 1909.8 MHz; Duty Cycle: 1:4.15

Medium: HSL_1900_2015/11/08 Medium parameters used: $f = 1909.8$ MHz; $\sigma = 1.422$ S/m; $\epsilon_r = 39.308$; $\rho = 1000$ kg/m³

Ambient Temperature : 23.8 °C; Liquid Temperature : 22.4 °C

DASY5 Configuration:

- Probe: EX3DV4 - SN3911; ConvF(8.12, 8.12, 8.12); Calibrated: 2015/10/1;
- Sensor-Surface: 2mm (Mechanical Surface Detection)
- Electronics: DAE4 Sn1358; Calibrated: 2015/8/27
- Phantom: SAM2; Type: QD000P40CD; Serial: TP:1754
- Measurement SW: DASY52, Version 52.8 (8); SEMCAD X Version 14.6.10 (7331)

Ch810/Area Scan (61x111x1): Interpolated grid: dx=15mm, dy=15mm

Maximum value of SAR (interpolated) = 0.348 W/kg

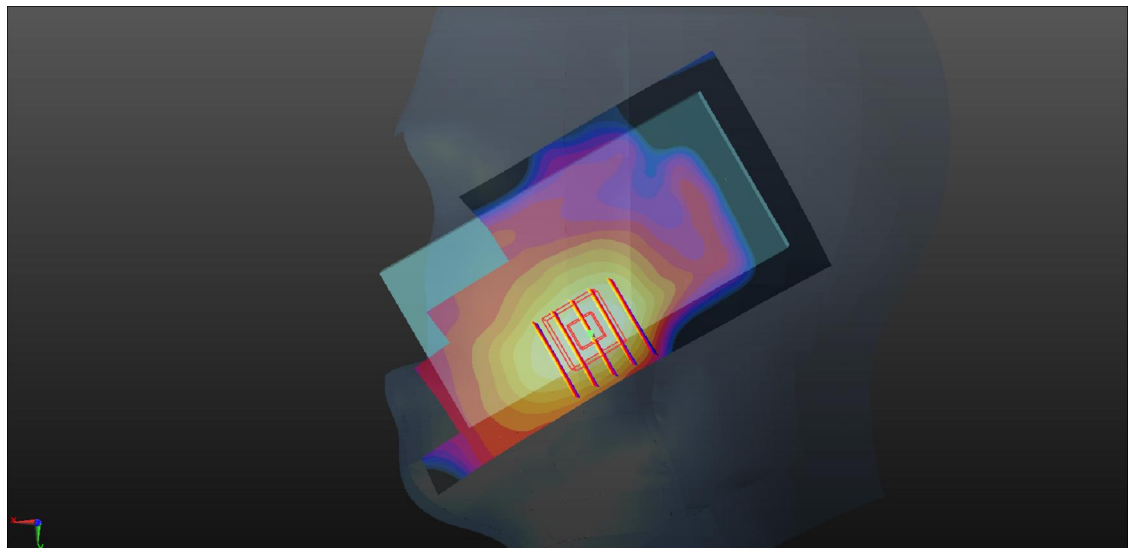
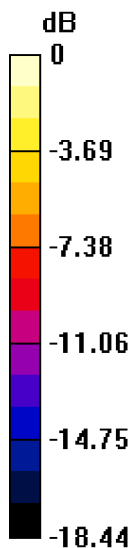
Ch810/Zoom Scan (5x5x7)/Cube 0: Measurement grid: dx=8mm, dy=8mm, dz=5mm

Reference Value = 4.213 V/m; Power Drift = 0.04 dB

Peak SAR (extrapolated) = 0.417 W/kg

SAR(1 g) = 0.261 W/kg; SAR(10 g) = 0.156 W/kg

Maximum value of SAR (measured) = 0.340 W/kg



0 dB = 0.340 W/kg

03_WCDMA V_RMC 12.2Kbps_Right Cheek_Ch4233

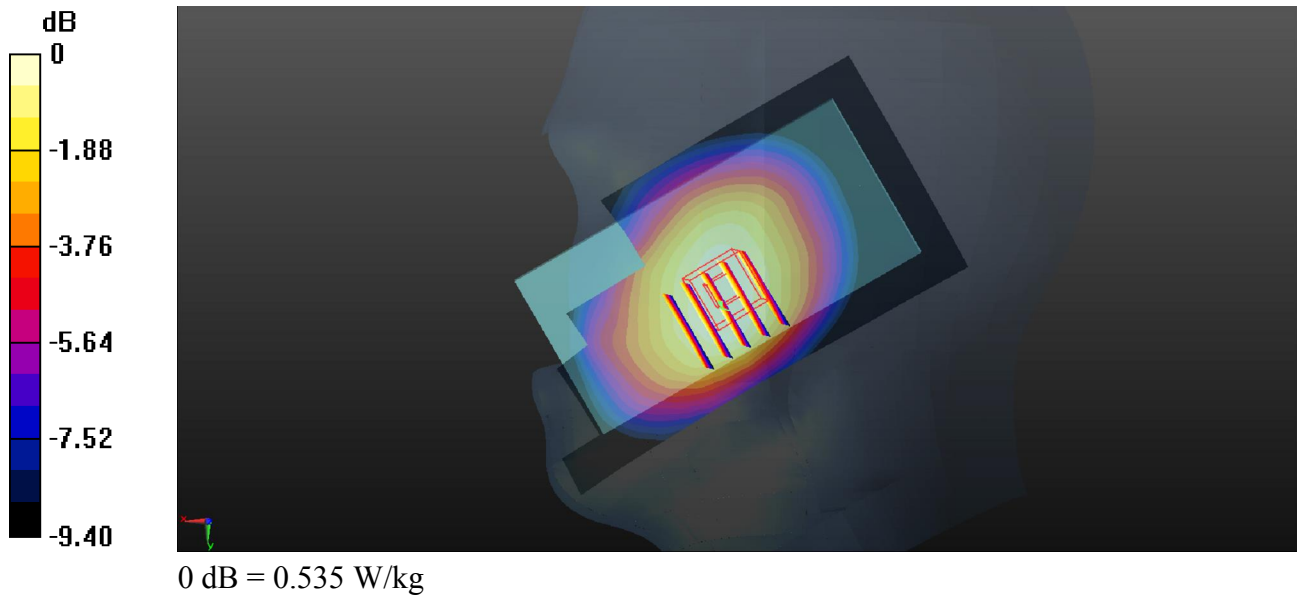
Communication System: UID 0, WCDMA (0); Frequency: 846.6 MHz; Duty Cycle: 1:1
Medium: HSL_835_2015/11/08 Medium parameters used: $f = 846.6$ MHz; $\sigma = 0.918$ S/m; $\epsilon_r = 42.142$; $\rho = 1000$ kg/m³
Ambient Temperature : 23.5 °C ; Liquid Temperature : 22.5 °C

DASY5 Configuration:

- Probe: EX3DV4 - SN3911; ConvF(9.75, 9.75, 9.75); Calibrated: 2015/10/1;
- Sensor-Surface: 2mm (Mechanical Surface Detection)
- Electronics: DAE4 Sn1358; Calibrated: 2015/8/27
- Phantom: SAM1; Type: QD000P40CD; Serial: TP:1753
- Measurement SW: DASY52, Version 52.8 (8); SEMCAD X Version 14.6.10 (7331)

Ch4233/Area Scan (61x111x1): Interpolated grid: dx=15mm, dy=15mm
Maximum value of SAR (interpolated) = 0.548 W/kg

Ch4233/Zoom Scan (5x5x7)/Cube 0: Measurement grid: dx=8mm, dy=8mm, dz=5mm
Reference Value = 7.109 V/m; Power Drift = 0.03 dB
Peak SAR (extrapolated) = 0.583 W/kg
SAR(1 g) = 0.476 W/kg; SAR(10 g) = 0.363 W/kg
Maximum value of SAR (measured) = 0.535 W/kg



04_WCDMA IV_RMC 12.2Kbps_Right Cheek_Ch1513

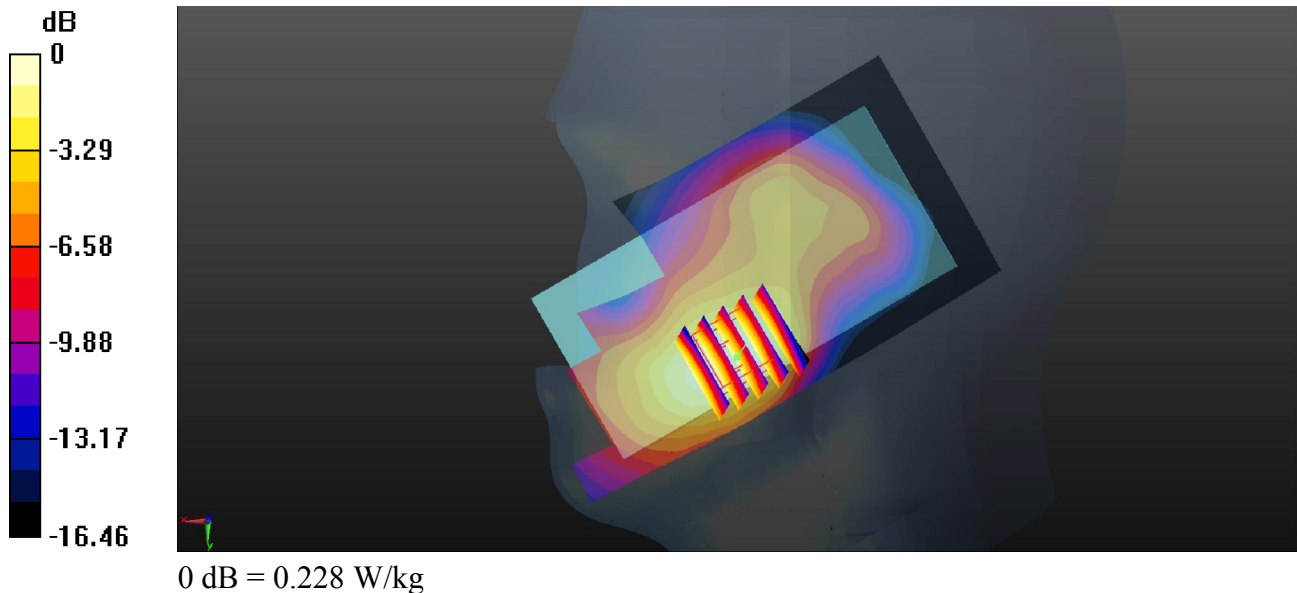
Communication System: UID 0, WCDMA (0); Frequency: 1752.6 MHz; Duty Cycle: 1:1
 Medium: HSL_1750_2015/11/07 Medium parameters used: $f = 1752.6$ MHz; $\sigma = 1.366$ S/m; $\epsilon_r = 41.297$; $\rho = 1000$ kg/m³
 Ambient Temperature : 23.5 °C ; Liquid Temperature : 22.6 °C

DASY5 Configuration:

- Probe: EX3DV4 - SN3911; ConvF(8.41, 8.41, 8.41); Calibrated: 2015/10/1;
- Sensor-Surface: 2mm (Mechanical Surface Detection)
- Electronics: DAE4 Sn1358; Calibrated: 2015/8/27
- Phantom: SAM1; Type: QD000P40CD; Serial: TP:1753
- Measurement SW: DASY52, Version 52.8 (8); SEMCAD X Version 14.6.10 (7331)

Ch1513/Area Scan (61x111x1): Interpolated grid: dx=15mm, dy=15mm
 Maximum value of SAR (interpolated) = 0.232 W/kg

Ch1513/Zoom Scan (5x5x7)/Cube 0: Measurement grid: dx=8mm, dy=8mm, dz=5mm
 Reference Value = 3.659 V/m; Power Drift = 0.07 dB
 Peak SAR (extrapolated) = 0.269 W/kg
SAR(1 g) = 0.178 W/kg; SAR(10 g) = 0.112 W/kg
 Maximum value of SAR (measured) = 0.228 W/kg



05_WCDMA II_RMC 12.2Kbps_Right Cheek_Ch9262

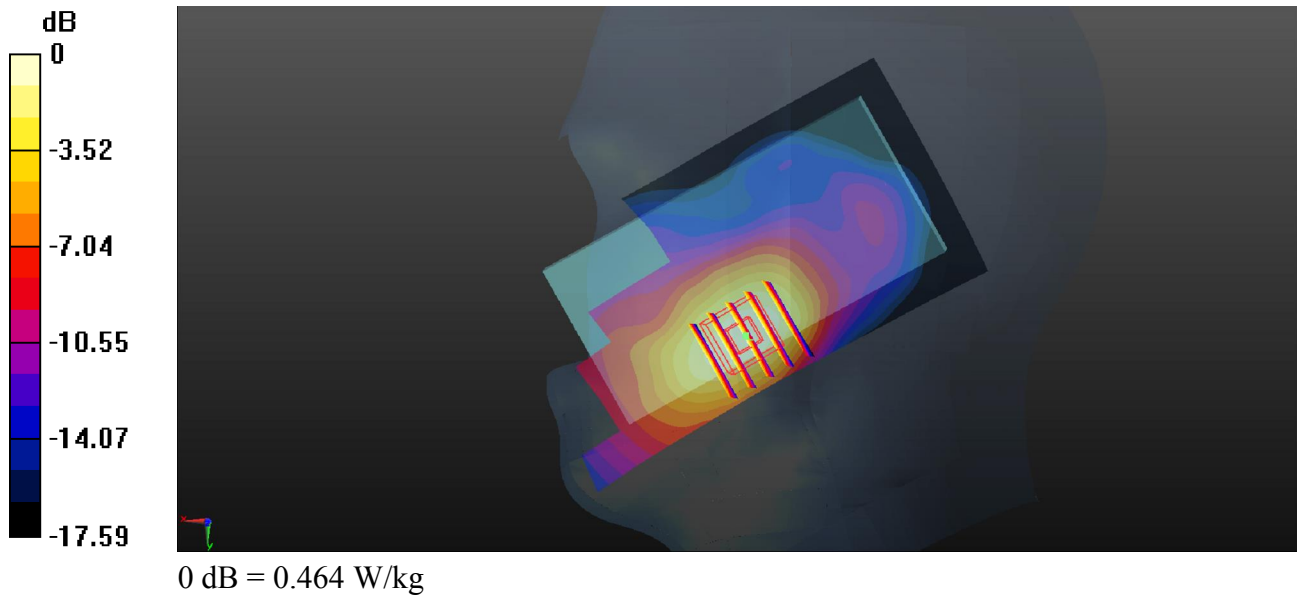
Communication System: UID 0, WCDMA (0); Frequency: 1852.4 MHz; Duty Cycle: 1:1
Medium: HSL_1900_2015/11/08 Medium parameters used: $f = 1852.4$ MHz; $\sigma = 1.353$ S/m; $\epsilon_r = 39.378$; $\rho = 1000$ kg/m³
Ambient Temperature : 23.8 °C ; Liquid Temperature : 22.4 °C

DASY5 Configuration:

- Probe: EX3DV4 - SN3911; ConvF(8.12, 8.12, 8.12); Calibrated: 2015/10/1;
- Sensor-Surface: 2mm (Mechanical Surface Detection)
- Electronics: DAE4 Sn1358; Calibrated: 2015/8/27
- Phantom: SAM2; Type: QD000P40CD; Serial: TP:1754
- Measurement SW: DASY52, Version 52.8 (8); SEMCAD X Version 14.6.10 (7331)

Ch9262/Area Scan (61x111x1): Interpolated grid: dx=15mm, dy=15mm
Maximum value of SAR (interpolated) = 0.486 W/kg

Ch9262/Zoom Scan (5x5x7)/Cube 0: Measurement grid: dx=8mm, dy=8mm, dz=5mm
Reference Value = 4.736 V/m; Power Drift = 0.09 dB
Peak SAR (extrapolated) = 0.559 W/kg
SAR(1 g) = 0.357 W/kg; SAR(10 g) = 0.217 W/kg
Maximum value of SAR (measured) = 0.464 W/kg



06_WLAN 2.4GHz_802.11b 1Mbps_Left Cheek_Ch1

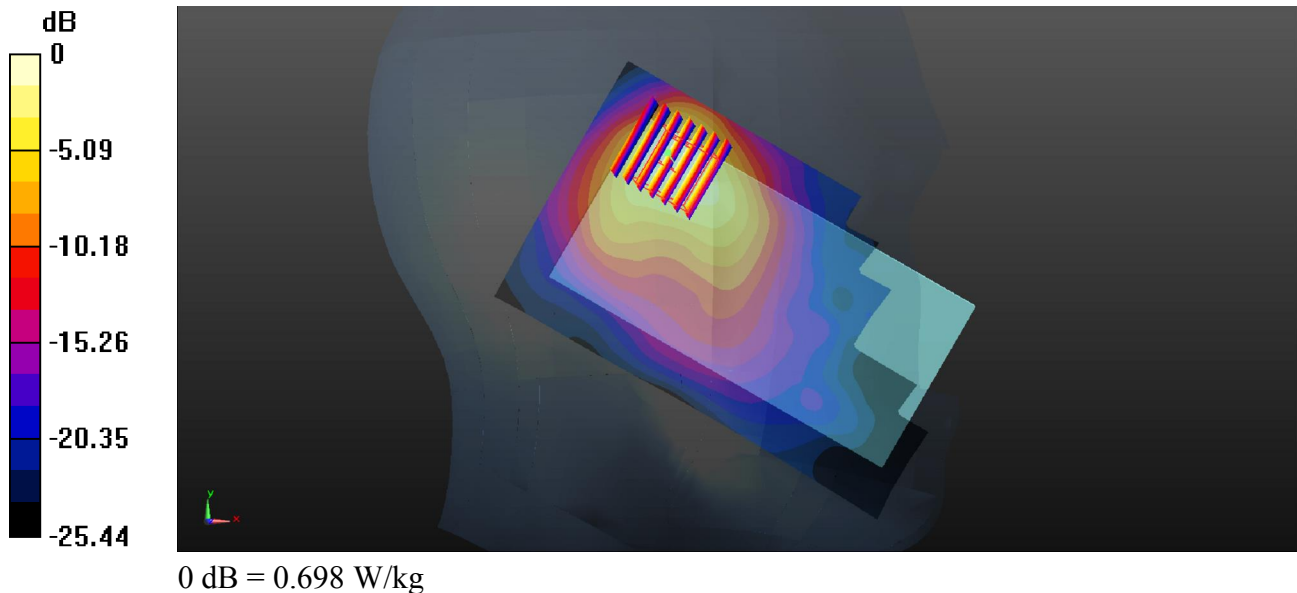
Communication System: UID 0, 802.11b (0); Frequency: 2412 MHz; Duty Cycle: 1:1.024
 Medium: HSL_2450_2015/11/09 Medium parameters used: $f = 2412$ MHz; $\sigma = 1.791$ S/m; $\epsilon_r = 37.846$; $\rho = 1000$ kg/m³
 Ambient Temperature : 23.7 °C ; Liquid Temperature : 22.3 °C

DASY5 Configuration:

- Probe: EX3DV4 - SN3911; ConvF(7.31, 7.31, 7.31); Calibrated: 2015/10/1;
- Sensor-Surface: 2mm (Mechanical Surface Detection)
- Electronics: DAE4 Sn1358; Calibrated: 2015/8/27
- Phantom: SAM1; Type: QD000P40CD; Serial: TP:1753
- Measurement SW: DASY52, Version 52.8 (8); SEMCAD X Version 14.6.10 (7331)

Ch1/Area Scan (81x141x1): Interpolated grid: $dx=12$ mm, $dy=12$ mm
 Maximum value of SAR (interpolated) = 0.766 W/kg

Ch1/Zoom Scan (7x7x7)/Cube 0: Measurement grid: $dx=5$ mm, $dy=5$ mm, $dz=5$ mm
 Reference Value = 8.612 V/m; Power Drift = 0.07 dB
 Peak SAR (extrapolated) = 1.09 W/kg
SAR(1 g) = 0.436 W/kg; SAR(10 g) = 0.204 W/kg
 Maximum value of SAR (measured) = 0.698 W/kg



07_GSM850_GPRS (4 Tx slots)_Back_10mm_Ch251

Communication System: UID 0, GPRS (GMSK 4 Tx slot) (0); Frequency: 848.8 MHz; Duty Cycle: 1:2.08

Medium: MSL_835_2015/11/07 Medium parameters used: $f = 848.8$ MHz; $\sigma = 1.027$ S/m; $\epsilon_r = 55.807$; $\rho = 1000$ kg/m³

Ambient Temperature : 23.4 °C; Liquid Temperature : 22.3 °C

DASY5 Configuration:

- Probe: EX3DV4 - SN3911; ConvF(9.8, 9.8, 9.8); Calibrated: 2015/10/1;
- Sensor-Surface: 2mm (Mechanical Surface Detection)
- Electronics: DAE4 Sn1358; Calibrated: 2015/8/27
- Phantom: SAM1; Type: QD000P40CD; Serial: TP:1753
- Measurement SW: DASY52, Version 52.8 (8); SEMCAD X Version 14.6.10 (7331)

Ch251/Area Scan (61x111x1): Interpolated grid: dx=15mm, dy=15mm

Maximum value of SAR (interpolated) = 0.736 W/kg

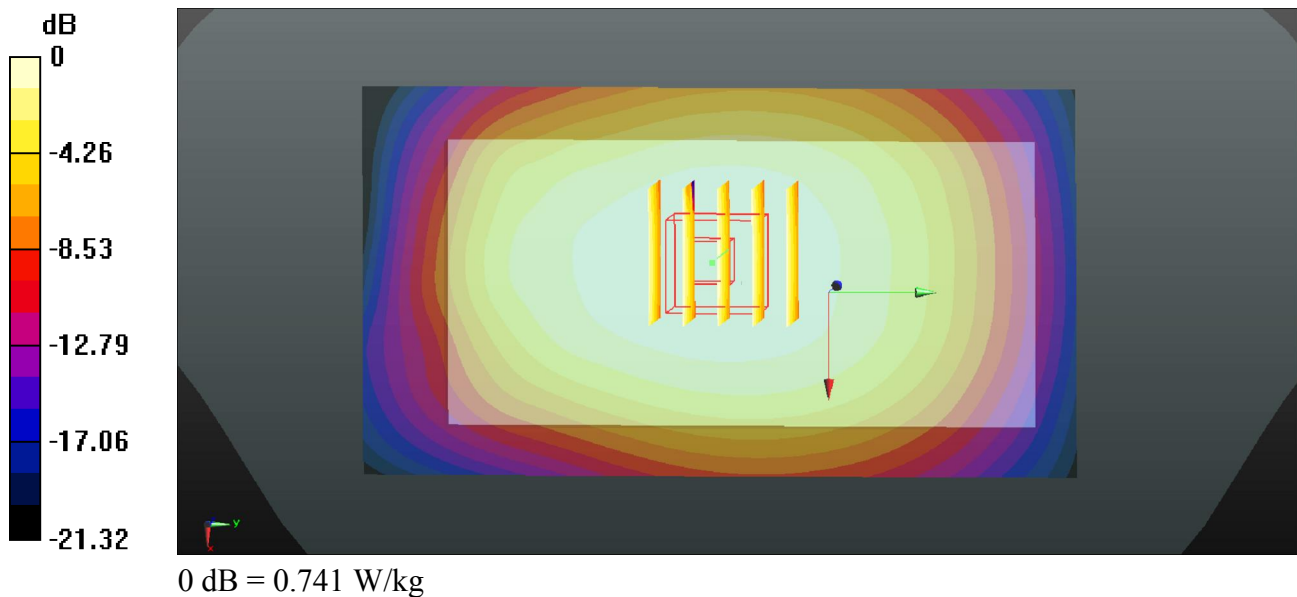
Ch251/Zoom Scan (5x5x7)/Cube 0: Measurement grid: dx=8mm, dy=8mm, dz=5mm

Reference Value = 25.34 V/m; Power Drift = 0.01 dB

Peak SAR (extrapolated) = 0.812 W/kg

SAR(1 g) = 0.644 W/kg; SAR(10 g) = 0.487 W/kg

Maximum value of SAR (measured) = 0.741 W/kg



08_GSM1900_GPRS (2 Tx slots)_Bottom side_10mm_Ch512

Communication System: UID 0, GPRS (GMSK 2 Tx slot) (0); Frequency: 1850.2 MHz; Duty Cycle: 1:4.15

Medium: MSL_1900_2015/11/06 Medium parameters used: $f = 1850.2$ MHz; $\sigma = 1.514$ S/m; $\epsilon_r = 52.489$; $\rho = 1000$ kg/m³

Ambient Temperature : 23.9 °C; Liquid Temperature : 22.5 °C

DASY5 Configuration:

- Probe: EX3DV4 - SN3911; ConvF(7.75, 7.75, 7.75); Calibrated: 2015/10/1;
- Sensor-Surface: 2mm (Mechanical Surface Detection)
- Electronics: DAE4 Sn1358; Calibrated: 2015/8/27
- Phantom: SAM1; Type: QD000P40CD; Serial: TP:1753
- Measurement SW: DASY52, Version 52.8 (8); SEMCAD X Version 14.6.10 (7331)

Ch512/Area Scan (31x61x1): Interpolated grid: dx=15mm, dy=15mm

Maximum value of SAR (interpolated) = 1.12 W/kg

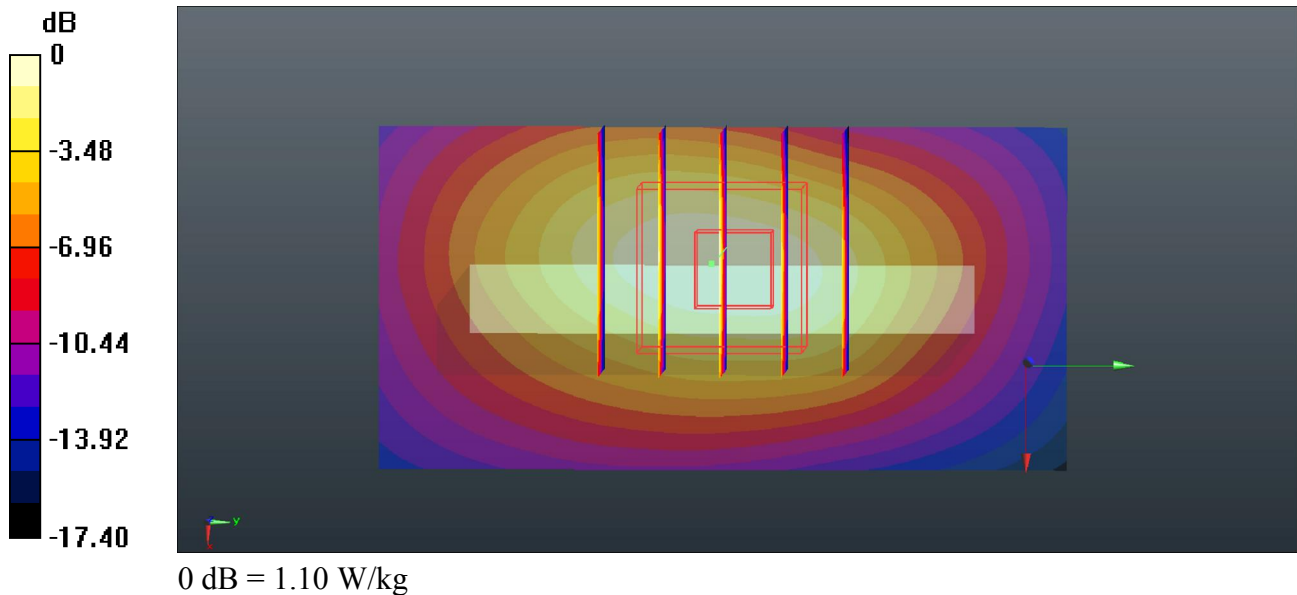
Ch512/Zoom Scan (5x5x7)/Cube 0: Measurement grid: dx=8mm, dy=8mm, dz=5mm

Reference Value = 10.12 V/m; Power Drift = -0.01 dB

Peak SAR (extrapolated) = 1.39 W/kg

SAR(1 g) = 0.822 W/kg; SAR(10 g) = 0.449 W/kg

Maximum value of SAR (measured) = 1.10 W/kg



09_WCDMA V_RMC 12.2Kbps_Back_10mm_Ch4233

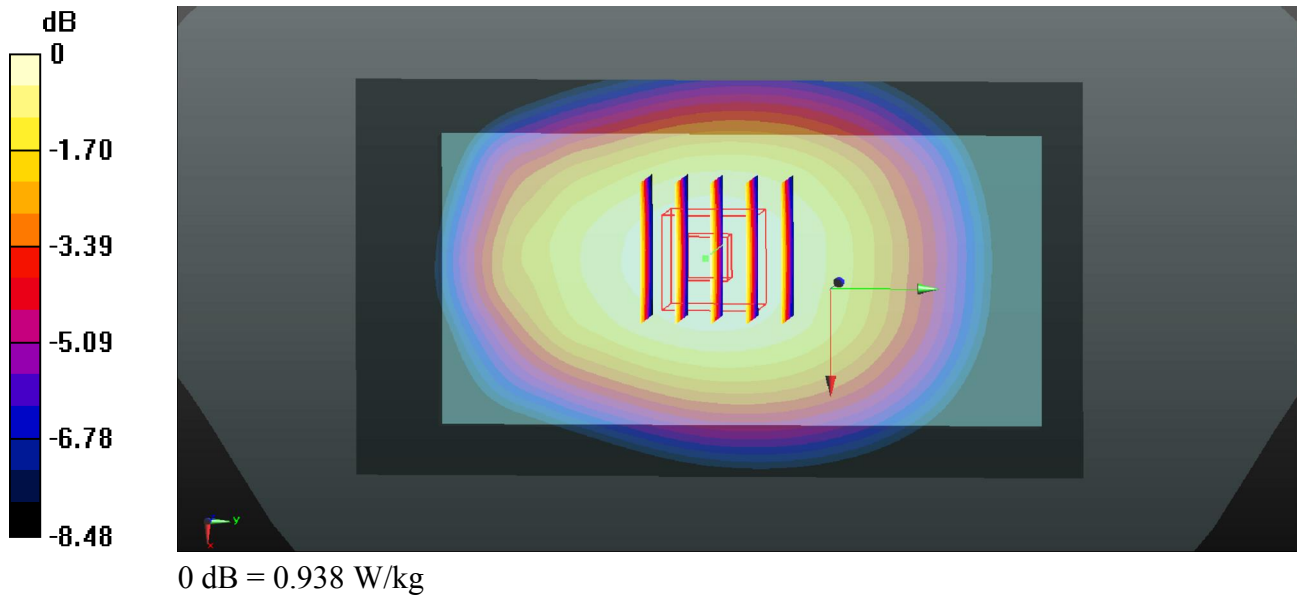
Communication System: UID 0, WCDMA (0); Frequency: 846.6 MHz; Duty Cycle: 1:1
Medium: MSL_835_2015/11/07 Medium parameters used: $f = 846.6$ MHz; $\sigma = 1.025$ S/m; $\epsilon_r = 55.827$; $\rho = 1000$ kg/m³
Ambient Temperature : 23.4 °C ; Liquid Temperature : 22.3 °C

DASY5 Configuration:

- Probe: EX3DV4 - SN3911; ConvF(9.8, 9.8, 9.8); Calibrated: 2015/10/1;
- Sensor-Surface: 2mm (Mechanical Surface Detection)
- Electronics: DAE4 Sn1358; Calibrated: 2015/8/27
- Phantom: SAM1; Type: QD000P40CD; Serial: TP:1753
- Measurement SW: DASY52, Version 52.8 (8); SEMCAD X Version 14.6.10 (7331)

Ch4233/Area Scan (61x111x1): Interpolated grid: dx=15mm, dy=15mm
Maximum value of SAR (interpolated) = 0.941 W/kg

Ch4233/Zoom Scan (5x5x7)/Cube 0: Measurement grid: dx=8mm, dy=8mm, dz=5mm
Reference Value = 28.49 V/m; Power Drift = 0.01 dB
Peak SAR (extrapolated) = 1.03 W/kg
SAR(1 g) = 0.814 W/kg; SAR(10 g) = 0.615 W/kg
Maximum value of SAR (measured) = 0.938 W/kg



10_WCDMA IV_RMC 12.2Kbps_Back_10mm_Ch1513

Communication System: UID 0, WCDMA (0); Frequency: 1752.6 MHz; Duty Cycle: 1:1
Medium: MSL_1750_2015/11/07 Medium parameters used: $f = 1752.6$ MHz; $\sigma = 1.51$ S/m; $\epsilon_r = 54.11$; $\rho = 1000$ kg/m³
Ambient Temperature : 23.7 °C ; Liquid Temperature : 22.3 °C

DASY5 Configuration:

- Probe: EX3DV4 - SN3911; ConvF(8.01, 8.01, 8.01); Calibrated: 2015/10/1;
- Sensor-Surface: 2mm (Mechanical Surface Detection)
- Electronics: DAE4 Sn1358; Calibrated: 2015/8/27
- Phantom: SAM2; Type: QD000P40CD; Serial: TP:1754
- Measurement SW: DASY52, Version 52.8 (8); SEMCAD X Version 14.6.10 (7331)

Ch1513/Area Scan (61x111x1): Interpolated grid: dx=15mm, dy=15mm

Maximum value of SAR (interpolated) = 1.65 W/kg

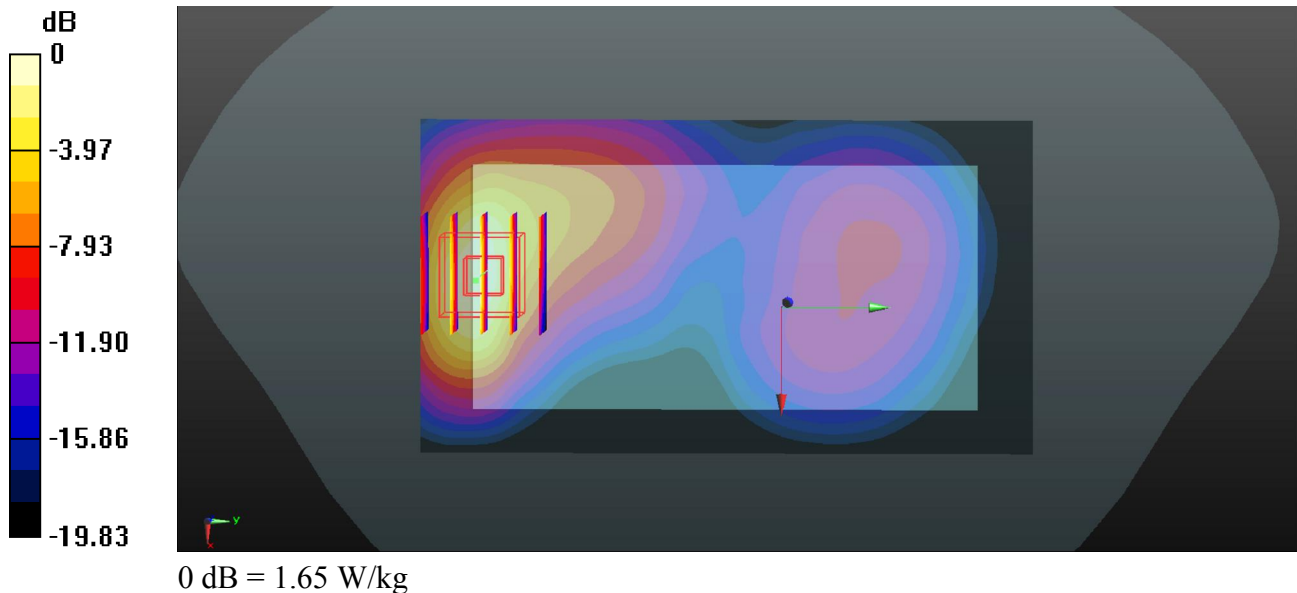
Ch1513/Zoom Scan (5x5x7)/Cube 0: Measurement grid: dx=8mm, dy=8mm, dz=5mm

Reference Value = 5.038 V/m; Power Drift = 0.13 dB

Peak SAR (extrapolated) = 2.03 W/kg

SAR(1 g) = 1.19 W/kg; SAR(10 g) = 0.620 W/kg

Maximum value of SAR (measured) = 1.65 W/kg



11_WCDMA II_RMC 12.2Kbps_Back_10mm_Ch9262

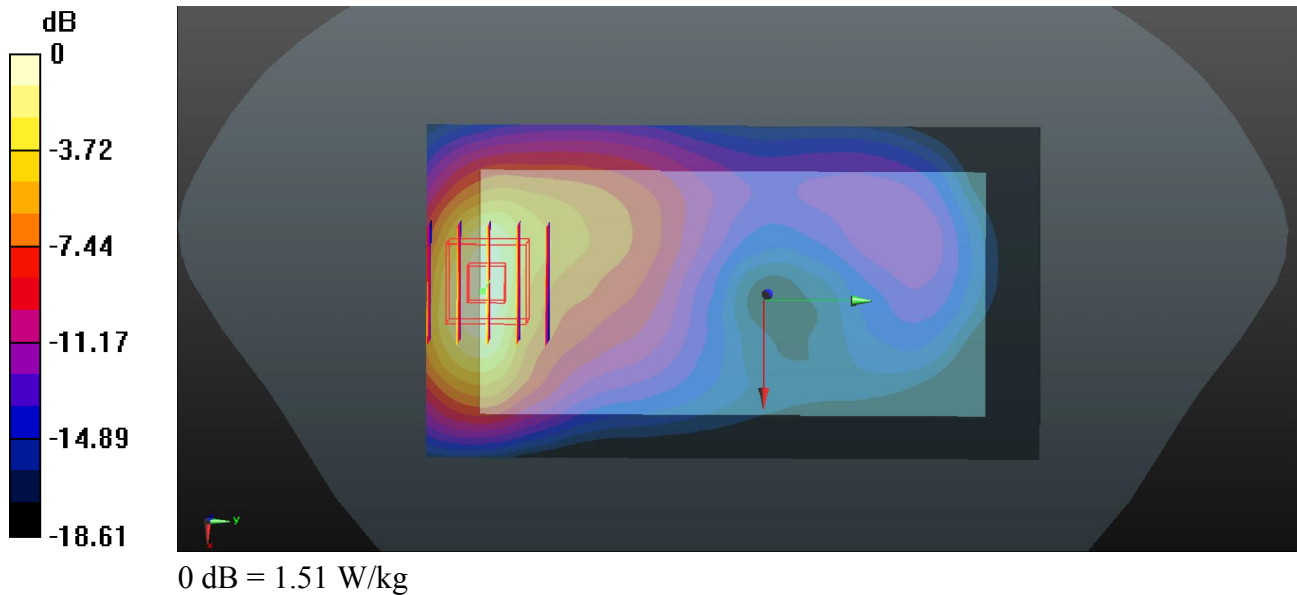
Communication System: UID 0, WCDMA (0); Frequency: 1852.4 MHz; Duty Cycle: 1:1
Medium: MSL_1900_2015/11/06 Medium parameters used: $f = 1852.4$ MHz; $\sigma = 1.517$ S/m; $\epsilon_r = 52.48$; $\rho = 1000$ kg/m³
Ambient Temperature : 23.9 °C; Liquid Temperature : 22.5 °C

DASY5 Configuration:

- Probe: EX3DV4 - SN3911; ConvF(7.75, 7.75, 7.75); Calibrated: 2015/10/1;
- Sensor-Surface: 2mm (Mechanical Surface Detection)
- Electronics: DAE4 Sn1358; Calibrated: 2015/8/27
- Phantom: SAM1; Type: QD000P40CD; Serial: TP:1753
- Measurement SW: DASY52, Version 52.8 (8); SEMCAD X Version 14.6.10 (7331)

Ch9262/Area Scan (61x111x1): Interpolated grid: dx=15mm, dy=15mm
Maximum value of SAR (interpolated) = 1.49 W/kg

Ch9262/Zoom Scan (5x5x7)/Cube 0: Measurement grid: dx=8mm, dy=8mm, dz=5mm
Reference Value = 4.744 V/m; Power Drift = 0.06 dB
Peak SAR (extrapolated) = 1.83 W/kg
SAR(1 g) = 1.08 W/kg; SAR(10 g) = 0.583 W/kg
Maximum value of SAR (measured) = 1.51 W/kg



12_WLAN 2.4GHz_802.11b 1Mbps_Back_10mm_Ch1

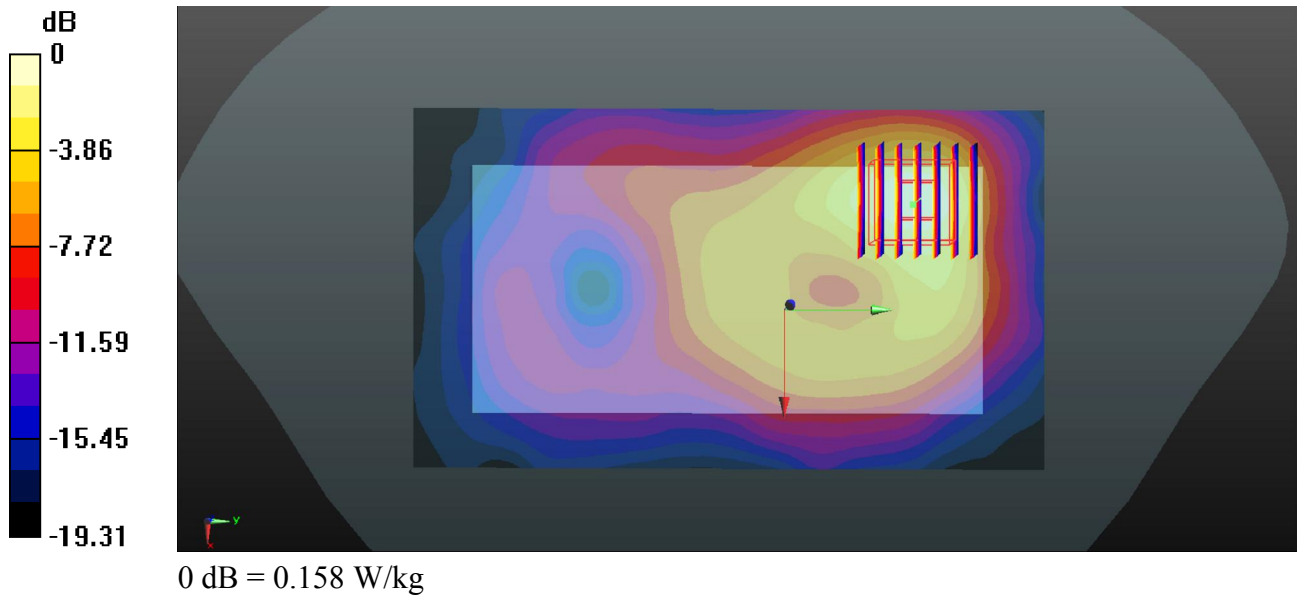
Communication System: UID 0, 802.11b (0); Frequency: 2412 MHz; Duty Cycle: 1:1.024
 Medium: MSL_2450_2015/11/09 Medium parameters used: $f = 2412 \text{ MHz}$; $\sigma = 1.868 \text{ S/m}$; $\epsilon_r = 53.464$; $\rho = 1000 \text{ kg/m}^3$
 Ambient Temperature : $23.5 \text{ }^\circ\text{C}$; Liquid Temperature : $22.6 \text{ }^\circ\text{C}$

DASY5 Configuration:

- Probe: EX3DV4 - SN3911; ConvF(7.34, 7.34, 7.34); Calibrated: 2015/10/1;
- Sensor-Surface: 2mm (Mechanical Surface Detection)
- Electronics: DAE4 Sn1358; Calibrated: 2015/8/27
- Phantom: SAM2; Type: QD000P40CD; Serial: TP:1754
- Measurement SW: DASY52, Version 52.8 (8); SEMCAD X Version 14.6.10 (7331)

Ch1/Area Scan (81x141x1): Interpolated grid: $dx=12\text{mm}$, $dy=12\text{mm}$
 Maximum value of SAR (interpolated) = 0.154 W/kg

Ch1/Zoom Scan (7x7x7)/Cube 0: Measurement grid: $dx=5\text{mm}$, $dy=5\text{mm}$, $dz=5\text{mm}$
 Reference Value = 4.318 V/m ; Power Drift = 0.11 dB
 Peak SAR (extrapolated) = 0.221 W/kg
SAR(1 g) = 0.106 W/kg ; SAR(10 g) = 0.053 W/kg
 Maximum value of SAR (measured) = 0.158 W/kg



13_GSM1900_GPRS (2 Tx slots)_Back_10mm_Ch512

Communication System: UID 0, GPRS (GMSK 2 Tx slot) (0); Frequency: 1850.2 MHz; Duty Cycle: 1:4.15

Medium: MSL_1900_2015/11/06 Medium parameters used: $f = 1850.2$ MHz; $\sigma = 1.514$ S/m; $\epsilon_r = 52.489$; $\rho = 1000$ kg/m³

Ambient Temperature : 23.9 °C; Liquid Temperature : 22.5 °C

DASY5 Configuration:

- Probe: EX3DV4 - SN3911; ConvF(7.75, 7.75, 7.75); Calibrated: 2015/10/1;
- Sensor-Surface: 2mm (Mechanical Surface Detection)
- Electronics: DAE4 Sn1358; Calibrated: 2015/8/27
- Phantom: SAM1; Type: QD000P40CD; Serial: TP:1753
- Measurement SW: DASY52, Version 52.8 (8); SEMCAD X Version 14.6.10 (7331)

Ch512/Area Scan (61x111x1): Interpolated grid: dx=15mm, dy=15mm

Maximum value of SAR (interpolated) = 0.942 W/kg

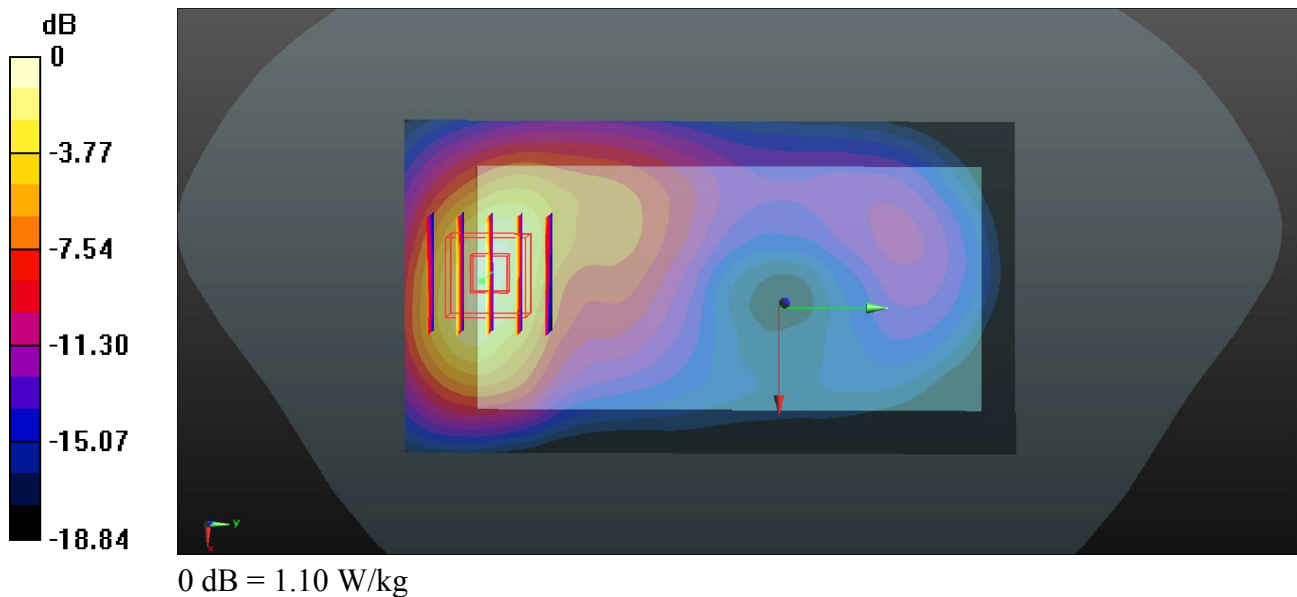
Ch512/Zoom Scan (5x5x7)/Cube 0: Measurement grid: dx=8mm, dy=8mm, dz=5mm

Reference Value = 4.049 V/m; Power Drift = 0.18 dB

Peak SAR (extrapolated) = 1.38 W/kg

SAR(1 g) = 0.804 W/kg; SAR(10 g) = 0.431 W/kg

Maximum value of SAR (measured) = 1.10 W/kg



14_WCDMA IV_RMC 12.2Kbps_Back_10mm_Ch1513_Headset

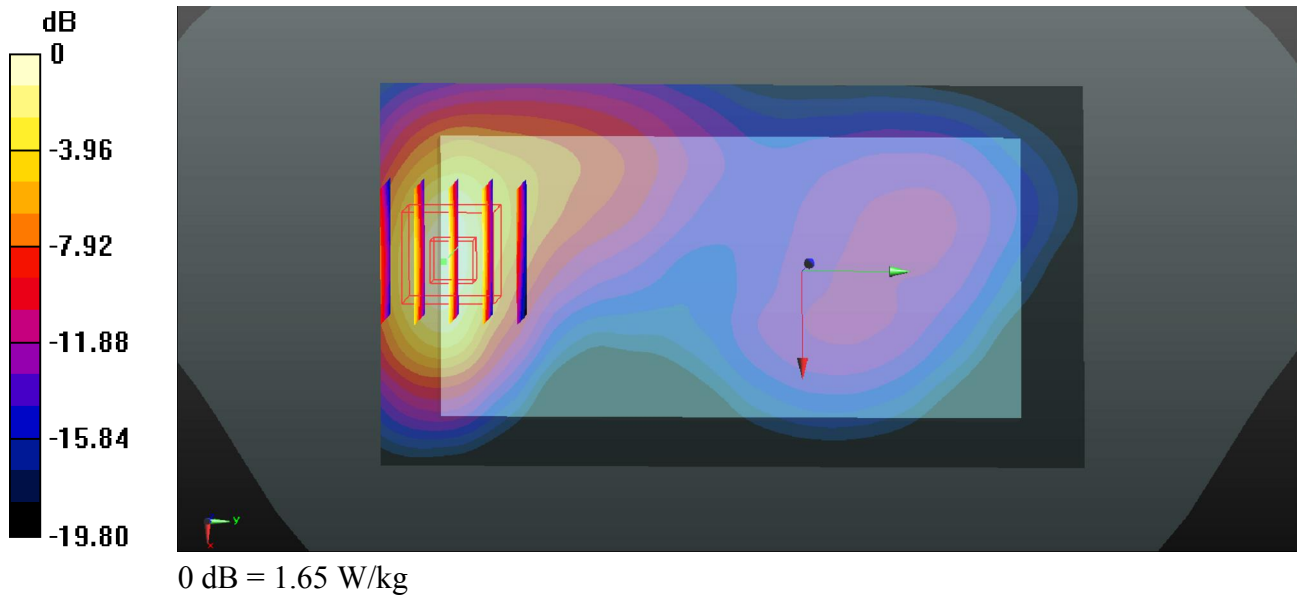
Communication System: UID 0, WCDMA (0); Frequency: 1752.6 MHz; Duty Cycle: 1:1
Medium: MSL_1750_2015/11/07 Medium parameters used: $f = 1752.6$ MHz; $\sigma = 1.51$ S/m; $\epsilon_r = 54.11$; $\rho = 1000$ kg/m³
Ambient Temperature : 23.7 °C ; Liquid Temperature : 22.3 °C

DASY5 Configuration:

- Probe: EX3DV4 - SN3911; ConvF(8.01, 8.01, 8.01); Calibrated: 2015/10/1;
- Sensor-Surface: 2mm (Mechanical Surface Detection)
- Electronics: DAE4 Sn1358; Calibrated: 2015/8/27
- Phantom: SAM2; Type: QD000P40CD; Serial: TP:1754
- Measurement SW: DASY52, Version 52.8 (8); SEMCAD X Version 14.6.10 (7331)

Ch1513/Area Scan (61x111x1): Interpolated grid: dx=15mm, dy=15mm
Maximum value of SAR (interpolated) = 1.62 W/kg

Ch1513/Zoom Scan (5x5x7)/Cube 0: Measurement grid: dx=8mm, dy=8mm, dz=5mm
Reference Value = 5.686 V/m; Power Drift = 0.03 dB
Peak SAR (extrapolated) = 2.06 W/kg
SAR(1 g) = 1.21 W/kg; SAR(10 g) = 0.632 W/kg
Maximum value of SAR (measured) = 1.65 W/kg



15_BT_1Mbps_Back 10mm_Ch0

Communication System: Bluetooth (0); Frequency: 2402 MHz; Duty Cycle: 1:1.2

Medium: MSL_2450_150901 Medium parameters used: $f = 2402$ MHz; $\sigma = 1.864$ mho/m; $\epsilon_r =$

51.469; $\rho = 1000$ kg/m³

Ambient Temperature : 23.7 °C; Liquid Temperature : 22.8 °C

DASY5 Configuration:

- Probe: EX3DV4 - SN3857; ConvF(7.29, 7.29, 7.29); Calibrated: 2015.05.28
- Sensor-Surface: 2mm (Mechanical Surface Detection)
- Electronics: DAE4 Sn1210; Calibrated: 2015.05.21
- Phantom: SAM2; Type: SAM; Serial: TP-1477
- Measurement SW: DASY52, Version 52.8 (8); SEMCAD X Version 14.4.5 (3634)

Ch0/Area Scan (81x131x1): Measurement grid: $dx=12$ mm, $dy=12$ mm

Maximum value of SAR (interpolated) = 0.050 mW/g

Ch0/Zoom Scan (7x7x7)/Cube 0: Measurement grid: $dx=5$ mm, $dy=5$ mm, $dz=5$ mm

Reference Value = 2.585 V/m; Power Drift = 0.04 dB

Peak SAR (extrapolated) = 0.066 W/kg

SAR(1 g) = 0.033 mW/g; SAR(10 g) = 0.014 mW/g

Maximum value of SAR (measured) = 0.050 mW/g

