

© 2014 All Rights Reserved

Acer Liquid Z220, Liquid M220 Quick Guide

Model: Z220, M220

This revision: 01/2015

## Product information

For detailed product information, please go to **www.acer.com**.

For service and support information, or to download the User Guide, drivers and applications, please follow the instructions below:

1. Go to **www.acer.com** and click **Support > DRIVERS AND MANUALS**.
2. Select appropriate items from **Group > Series > Products**.
3. Select the operating system from the drop-down menu.

Acer Liquid Z220, Liquid M220 Smartphone

Model number: \_\_\_\_\_

Serial number: \_\_\_\_\_

Date of purchase: \_\_\_\_\_

Place of purchase: \_\_\_\_\_

*Android is a trademark of Google Inc. Use of this trademark is subject to Google Permissions.*

# Unpacking your smartphone

Your new smartphone comes packed in a protective box. Carefully unpack the box and remove the contents. If any of the following items is missing or damaged, contact your dealer immediately:

- Your new Acer smartphone
- USB cable
- AC adapter
- Headset

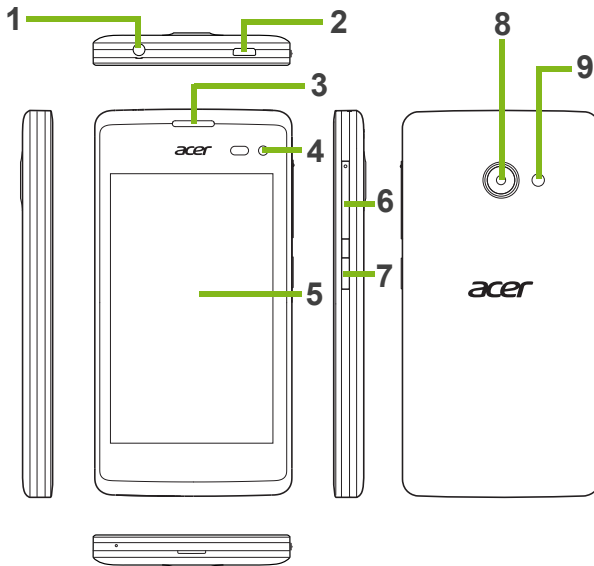


### Note

*In-box content varies depending on country and region.*

# Getting to know your smartphone

## Views

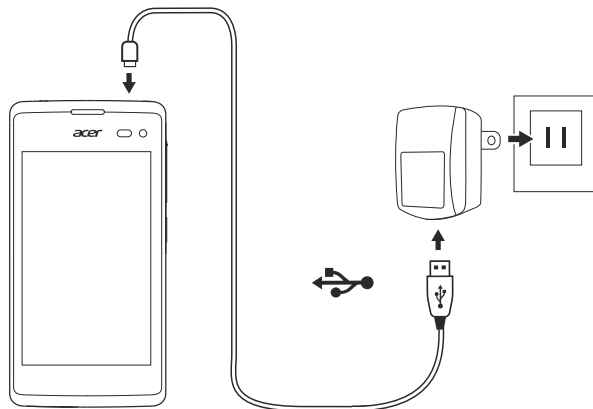


| No. | Item                  | Description   |
|-----|-----------------------|---|
| 1   | 3.5 mm headphone jack | Connects to stereo headphones.  |
| 2   | Micro USB connector   | Connects to a USB cable/charger.  |
| 3   | Smartphone speaker    | Emits audio from your smartphone; suitable for holding to your ear.                                   |
| 4   | Front-facing camera   | Use for self-portrait images and online video chat.   |
| 5   | Touchscreen           | 4-inch capacitive touchscreen to display data, smartphone content and enter information.              |
| 6   | Volume up/down button | Increases or decreases the smartphone volume.   |
| 7   | Power button          | Press to turn the screen on/off or enter sleep mode; press and hold to turn the smartphone on or off. |
| 8   | Camera                | A camera for taking high-resolution images.   |
| 9   | Flash                 | LED flash for camera.   |

## Charging the battery

For initial use, you need to charge your smartphone for eight hours. After that you can recharge the battery as needed.

Connect the AC adapter cord to the micro USB connector on your smartphone.



# Specifications



## Note

*Specifications may vary depending on region and configuration.*

## Performance

- 1.2 GHz dual-core processor
- System memory:
  - ROM 8 GB eMMC + RAM 1 GB
- Android operating system

## Display

- 4" TFT LCD, capacitive touchscreen
- 480 x 800 resolution

## Multimedia

Formats supported:

| Type            | Formats   |
|-----------------|---|
| Image           | JPEG, GIF, PNG, BMP                                     |
| Audio playback  | MP3, AMR, AAC LC, AAC+, eAAC+, Vorbis, FLAC, MIDI, WAVE |
| Ringtone        | MP3, AMR, AAC LC, AAC+, eAAC+, Vorbis, FLAC, MIDI, WAVE |
| Video recording | H.263, H.264, MPEG4                                     |
| Video playback  | H.263, H.264, MPEG4, VP8                                |

## USB connector

- Micro USB connector
- USB client
- DC power-in (5 V, 0.5 A)

## Connectivity

- Bluetooth 4.0
- IEEE 802.11b/g/n
- GSM 850 / 900 / 1800 / 1900 MHz
- HSPA / WCDMA
  - 850 MHz (B5) / 1900 MHz (B2)
- HSPA+ / GPRS / EDGE
- GPS

\*Frequency depends on model.

## Camera

- 5 MP rear camera (Auto focus)
- 2 MP front camera (Fixed focus)

## Expansion

- microSD memory card slot (up to 32 GB)

## Battery

- 1300 mAh Lithium-ion battery



### Note

*Length of battery operation will depend on power consumption which is based on system resource use. For example, constantly using the backlight or using power-demanding apps will shorten battery life between charges.*

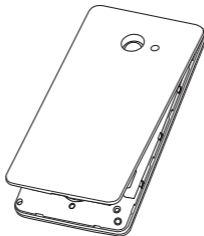
## Dimensions

|           |                      |
|-----------|----------------------|
| Height    | 125.3 mm             |
| Width     | 64 mm                |
| Thickness | 9.57 mm              |
| Weight    | 120 g (with battery) |

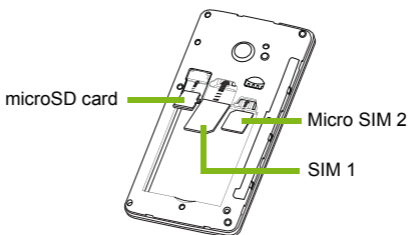
# Setting up for the first time

## Inserting the SIM cards and microSD card

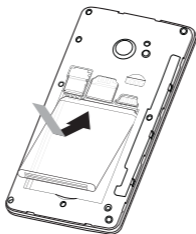
1. Turn off the phone by pressing and holding the power button.
2. Insert your fingernail into the notch located at the bottom of the phone and remove the cover as illustrated.



3. Insert the SIM or microSD card as shown.

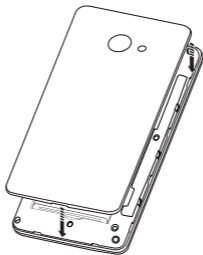


4. Align the gold-colored connectors on the battery with the connectors at the top of the battery compartment and insert the battery.





5. Replace the cover by aligning the tabs on the cover into the slots on the phone. Gently press the cover until it snaps in place.



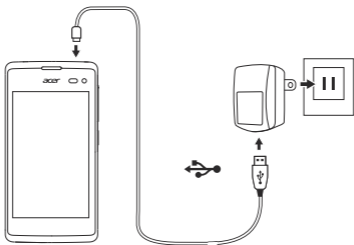
## Charging your phone

For initial use, you need to charge your smartphone for eight hours. After that you can recharge the battery as needed.

Connect the AC adapter cord to the micro USB connector on your smartphone. Plug the AC adapter into any AC outlet and charge the device.

It is normal for the phone to heat up when charging or during long periods of use.

All phones are factory tested before release.



## Resetting and restarting the phone

Open **Settings** from the Applications menu, then tap **Backup & reset**. Tap **Factory data reset** and then tap **Reset phone**. Tap **Erase everything** to format your phone.

If your phone is no longer responding, press and hold the power button and volume up button simultaneously for 8 to 10 seconds to reset the phone.

## Replacing the battery

Replace the battery with the same type as that which came bundled with your product. Use of another battery may present a risk of fire or explosion.



**Warning! Batteries may explode if not handled properly. Do not disassemble or dispose of them in fire. Keep them away from children. Follow local regulations when disposing of used batteries.**

## Disposal and recycling information



Do not throw this electronic device into the trash when discarding.

To minimize pollution and ensure utmost protection of the global environment, please recycle. For more information on the Waste from Electrical and Electronics Equipment (WEEE) regulations, visit

**[www.acer-group.com/public/Sustainability](http://www.acer-group.com/public/Sustainability)**

It is compliant with WEEE regulation

## RoHS compliance

This product is in compliance with Directive 2011/65/EU of the European Parliament and of the Council of 8 June 2011, on the restriction of the use of certain hazardous substances (RoHS) in electrical and electronic equipment and its amendments.

## FCC regulations

This device complies with part 15 of the FCC Rules. Operation is subject to the following two conditions: (1) This device may not cause harmful interference, and (2) this device must accept any interference received, including interference that may cause undesired operation.

This device has been tested and found to comply with the limits for a Class

B digital device, pursuant to Part 15 of the FCC Rules. These limits are designed to provide reasonable protection against harmful interference in a residential installation. This equipment generates, uses and can radiated radio frequency energy and, if not installed and used in accordance with the instructions, may cause harmful interference to radio communications. However, there is no guarantee that interference will not occur in a particular installation. If this equipment does cause harmful interference to radio or television reception, which can be determined by turning the equipment off and on, the user is encouraged to try to correct the interference by one or more of the following measures:

- Reorient or relocate the receiving antenna.
- Increase the separation between the equipment and receiver.
- Connect the equipment into an outlet on a circuit different from that to which the receiver is connected.
- Consult the dealer or an experienced radio/TV technician for help.

Changes or modifications not expressly approved by the party responsible for compliance could void the user's authority to operate the equipment.

## IC regulations

This device complies with Industry Canada license-exempt RSS standard(s). Operation is subject to the following two conditions:

- (1) this device may not cause interference, and
- (2) this device must accept any interference, including interference that may cause undesired operation of the device.

Le présent appareil est conforme aux CNR d'Industrie Canada applicables aux appareils radio exempts de licence. L'exploitation est autorisée aux deux conditions suivantes:

(1) l'appareil ne doit pas produire de brouillage, et

(2) l'utilisateur de l'appareil doit accepter tout brouillage radioélectrique subi, même si le brouillage est susceptible d'en compromettre le fonctionnement."

CAN ICES-3(B)/NMB-3(B)

## RF exposure information (SAR)

This device meets the FCC/IC requirements on the limitation of exposure of the general public to electromagnetic fields by way of health protection.

The unit of measurement for the FCC/IC limit is the "Specific Absorption Rate" (SAR). The SAR limit set by the FCC/IC is 1.6 W/kg, averaged over 1 g of tissue. The FCC and IC have granted an Equipment Authorization for this device with all reported SAR levels evaluated as in compliance with the FCC and IC RF exposure guidelines. SAR information on this device is on file with the FCC and can be found under the Display Grant section of [www.fcc.gov/oet/ea/fccid](http://www.fcc.gov/oet/ea/fccid) after searching on the FCC ID for your device, which can be found on the product labeling of your device.

For body-worn operation, this device has been tested use with accessories that contain no metal and that position the handset a minimum of 1.0 cm from the body. Use of other accessories may not ensure compliance with RF exposure. If you do not use a body-worn accessory and are not holding the device at the ear, position the handset a minimum of 1.0 cm from your body when the device is switched on.

During use, the actual SAR level is usually much lower than the maximum value. In general, the closer you are to a base station, the lower the transmission output of your device. To reduce exposure to RF energy, use a hands-free accessory or other similar option to keep this device away from your head and body.

This phone meets the FCC and IC requirements on the limitation of exposure of the general public to electromagnetic fields by way of health

protection.

The highest SAR value of this device is listed below:

|      | FCC (W/kg @1g) | IC (W/kg @1g) |
|------|----------------|---------------|
| Head | 0.77           | 0.77          |
| Body | 1.13           | 1.13          |