

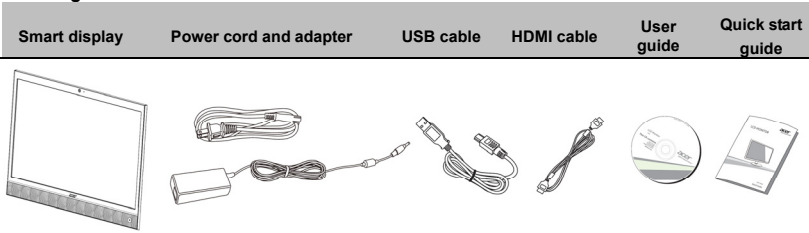
Acer Smart Display Quick Start Guide

Important safety instructions

Please read the following instructions carefully.

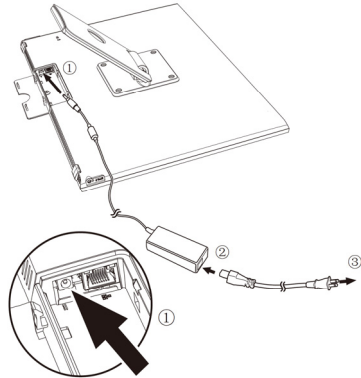
- To clean the smart display screen:
 - Turn off the smart display and unplug the power cord.
 - Spray a non-solvent cleaning solution onto a rag and clean the screen gently.
- Do not place the smart display near a window. Exposing the monitor to rain, moisture or sunlight can severely damage it.
- Do not apply pressure to the LCD screen. Excessive pressure may cause permanent damage to the display.
- Do not remove the cover or attempt to service this unit yourself. An authorized technician should perform servicing of any nature.
- Store the smart display in a room with a temperature of -20° to 60° C (-4° to 140° F). Storing the smart display outside this range may result in permanent damage.
- Immediately unplug your monitor and call an authorized technician if any of the following circumstances occur:
 - Monitor-to-PC signal cable is frayed or damaged.
 - Liquid spills onto the smart display or the monitor is exposed to rain.
 - The smart display or case is damaged.

Package contents



Connecting your monitor to a computer

- Turn off your computer and unplug your computer's power cord.
- Connect the HDMI cable to the HDMI input socket of the monitor, and the HDMI output socket of the graphics card on the computer.
- Optional: Connect the micro USB port of the smart display and the USB-out port on the computer with the USB cable.
- Connect the smart display's power adapter into the power port at the back of the monitor.
- Plug the power cords of your computer and your monitor into a nearby electrical outlet.
- Press and hold the power button until the smart display turns on.
- To switch to HDMI display, press and hold the power button to view the OSD, then tap **HDMI**.



Please refer to the **User Guide** for information about setting up your smart display.

Turning on for the first time

You will be asked some questions before you can use your monitor as a smart display.

To set up or access a Google account, connect your smart display to an Ethernet or Wi-Fi access point.

External controls



Power button

Turns the display on/off. Green indicates power on. Amber indicates standby/power saving mode.

When using the HDMI input, press and hold the power button to view the OSD. Use the touch screen to select or adjust an option.

To change the volume, press and hold the power button to view the OSD. Slide the Volume bar left or right, then tap the back icon in the lower-right corner of the OSD.

Regulations and safety notices

FCC notices

This device has been tested and found to comply with the limits for a Class B digital device pursuant to Part 15 of the FCC rules. These limits are designed to provide reasonable protection against harmful interference in a residential installation. This device generates, uses, and can radiate radio frequency energy and, if not installed and used in accordance with the instructions, may cause harmful interference to radio communications.

However, there is no guarantee that interference will not occur in a particular installation. If this device does cause harmful interference to radio or television reception, which can be determined by turning the device off and on, the user is encouraged to try to correct the interference by one or more of the following measures:

- Reorient or relocate the receiving antenna.
- Increase the separation between the device and receiver.
- Connect the device into an outlet on a circuit different from that to which the receiver is connected.
- Consult the dealer or an experienced radio/television technician for help.

CE declaration of conformity

Hereby, Acer Inc., declares that this LCD monitor is in compliance with the essential requirements and other relevant provisions of EMC Directive 2004/108/EC, Low Voltage Directive 2006/95/EC, R&TTE Directive 1999/5/EC and RoHS Directive 2002/95/EC, and Directive 2009/125/EC with regard to establishing a framework for the setting of ecodesign requirements for energy-related product.

Notice: Shielded cables

All connections to other computing devices must be made using shielded cables to maintain compliance with EMC regulations.

Notice: Peripheral devices

Only peripherals (input/output devices, terminals, printers, etc.) certified to comply with the Class B limits may be attached to this equipment. Operation with non-certified peripherals is likely to result in interference to radio and TV reception.

Caution

Changes or modifications not expressly approved by the manufacturer could void the user authority, which is granted by the Federal Communications Commission, to operate this product.

Operation conditions

This device complies with Part 15 of the FCC Rules. Operation is subject to the following two conditions:

(1) this device may not cause harmful interference, and (2) this device must accept any interference received, including interference that may cause undesired operation.

Notice: Canadian users

This Class B digital apparatus complies with Canadian ICES-003.

Cet appareil numérique de la classe B est conforme a la norme NMB-003 du Canada.

Operation is subject to the following two conditions: (1) This device may not cause interference, and (2) this device must accept any interference, including interference that may cause undesired operation of the device.

Le present appareil est conforme aux CNR d'Industrie Canada applicables aux appareils radio exempts de licence. L'exploitation est autorisee aux deux conditions suivantes: (1) l'appareil ne doit pas produire de brouillage, et (2) l'utilisateur de l'appareil doit accepter tout brouillage radioelectrique subi, meme si le brouillage est susceptible d'en.

RF exposure warning

This equipment must be installed and operated in accordance with provided instructions and the antenna(s) used for this transmitter must be installed to provide a separation distance of at least 20 cm from all persons and must not be co-located or operating in conjunction with any other antenna or transmitter. End-users and installers must be provide with antenna installation instructions and transmitter operating conditions for satisfying RF exposure compliance.









Disposal of waste equipment by user in private household in the European Union



This symbol on the product or on its packaging indicates that this product must not be disposed of with your other household waste. Instead, it is your responsibility to dispose of your waste equipment by handing it over to a designated collection point for the recycling of waste electrical and electronic equipment. The separate collection and recycling of your waste equipment at the time of disposal will help to conserve natural resources and ensure that it is recycled in a manner that protects human health and the environment. For more information about where you can drop off your waste equipment for recycling, please contact your local city office, your household waste disposal service or the shop where you purchased the product.

SPECIFICATIONS

English

Items		DA220HQL
LCD Panel	Driving system	TFT Color LCD
	Size	21.5"W (55cm)
	Pixel pitch	0.2652(H) x 0.2652(V)mm
	Brightness (cd/m ²)	200 / 250 (Min/Typ)
	Contrast	100,000,000:1 Max (ACM)
	Viewable angle	178° (H), 178° (V)
	Response time	12ms (G to G)
	Panel Type	VA
	H-Frequency	30kHz-80kHz
V-Frequency	55Hz-75Hz	
Display Colors		16.7 Million
Touch screen		Optical dual-touch screen
Dot Clock		173MHz
Max. Resolution		1920 x 1080
Power consumption (at 250 nits)	On Mode	27W (typical)
	Off Mode	0.5W (typical)
Speakers		1W x 2 (Only Audio-Input model)
Input Connector	HDMI 19pin	
	Micro USB connector (slave), Two USB connectors (host)	
	Headphone jack, Ethernet LAN	
Input Video Signal		HDMI Signal
CPU		Dual-Core ARM® Cortex™-A9 processor 1 GHz
System memory		1GB of RAM, 8GB of flash memory
Operating system		Google Android
Connectivity		Bluetooth 2.1+EDR & A2DP support, WiFi IEEE 802.11b/g/n
Camera		1.2-megapixel
Maximum Screen Size	Horizontal	476.64mm
	Vertical	248.25mm
Power Source		100-240Vac, 50-60Hz (AC adaptor)
Environmental Considerations		Operating Temperature: 0° to 40°C Storage Temperature: -20° to 60°C Operating Humidity: 20% to 85%
Dimensions (W x H x D)		513x360x54mm
Weight (N. W.)		4.8kg (net)
Mechanism specifications		Tilt: 15° to 75°
External Controls	Buttons	Power button
	Functions	Contrast Brightness ACM (On/Off)
*All specifications are subject to change without notice.		
Regulatory Compliance		
       		



Acer Incorporated
8F, 88, Sec. 1, Xintai 5th Rd., Xizhi
New Taipei City 221, Taiwan



Declaration of Conformity

We,

Acer Incorporated
8F, 88, Sec. 1, Xintai 5th Rd., Xizhi, New Taipei City 221, Taiwan
Contact Person: Mr. RU Jan, e-mail: ru_jan@acer.com.tw

And,

Acer Italy s.r.l
Via Lepetit, 40, 20020 Lainate (MI) Italy
Tel: +39-02-939-921 ,Fax: +39-02 9399-2913
www.acer.it

Hereby declare that:

Product:	Smart Display
Trade Name:	Acer
Model Number:	DA220HQL
SKU Number:	DA220HQL

Is compliant with the essential requirements and other relevant provisions of the following EC directives, and that all the necessary steps have been taken and are in force to assure that production units of the same product will continue comply with the requirements.

EMC Directive 2004/108/EC as attested by conformity with the following harmonized standards:

- EN55022, AS/NZS CISPR22 Class B.
- EN55024
- EN61000-3-2
- EN61000-3-3

R&TTE Directive 1999/5/EC as attested by conformity with the following harmonized standard:

- EN300 328 V1.7.1
- EN 301 489-1 V1.9.2; EN 301 489-17 V2.1.1

Low Voltage Directive 2006/95/EC as attested by conformity with the following harmonized standard:

- EN60950-1:2006+A11:2009+A1:2010+A12:2011

RoHS Directive 2002/95/EC on the Restriction of the Use of certain Hazardous Substances in Electrical and Electronic Equipment:

- The maximum concentration values of the restricted substances by weight in homogenous material are:

Lead	0.1%	Polybrominated Biphenyls (PBB's)	0.1%
Mercury	0.1%	Polybrominated Diphenyl Ethers (PBDE's)	0.1%
Hexavalent Chromium	0.1%	Cadmium	0.01%

Directive 2009/125/EC with regard to establishing a framework for the setting of ecodesign requirements for energy-related product.

Year to begin affixing CE marking 2012.

RU Jan / Sr. Manager
Regulation, Acer Inc.

Nov. 15, 2012

Date



Acer America Corporation
333 West San Carlos St., Suite 1500
San Jose, CA 95110, U. S. A.
Tel : 254-298-4000
Fax : 254-298-4147
www.acer.com



Federal Communications Commission Declaration of Conformity

This device complies with Part 15 of the FCC Rules. Operation is subject to the following two conditions: (1) this device may not cause harmful interference, and (2) this device must accept any interference received, including interference that may cause undesired operation.

The following local Manufacturer /Importer is responsible for this declaration:

Product:	Smart Display
Model Number:	DA220HQL
SKU Number:	DA220HQL
Name of Responsible Party:	Acer America Corporation
Address of Responsible Party:	333 West San Carlos St. Suite 1500 San Jose, CA 95110 U. S. A.
Contact Person:	Acer Representative
Phone No.:	254-298-4000
Fax No.:	254-298-4147