

Karis(ZBZ) Antenna Test Report

Provide by :

Reviewed by : David CF Dai

Date: 2024/02/29

Rev:1



OUTLINE

1. Experimental Setup
2. Configuration
3. Antenna Placement & Picture
4. Outline Drawing
5. Antenna Performance
6. Antenna 2D Radiation Pattern
7. Antenna Coverage
8. Conclusion



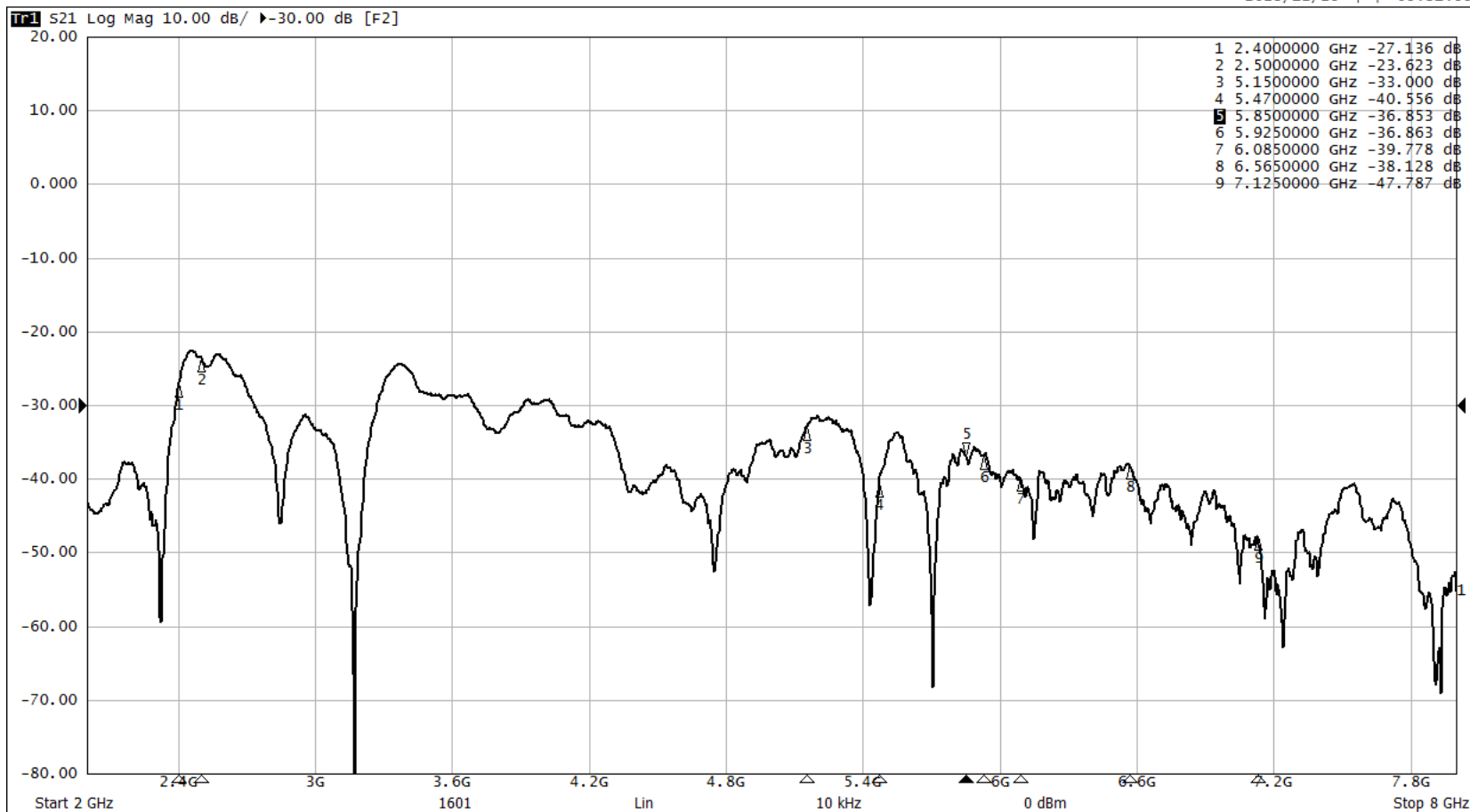
Open mode



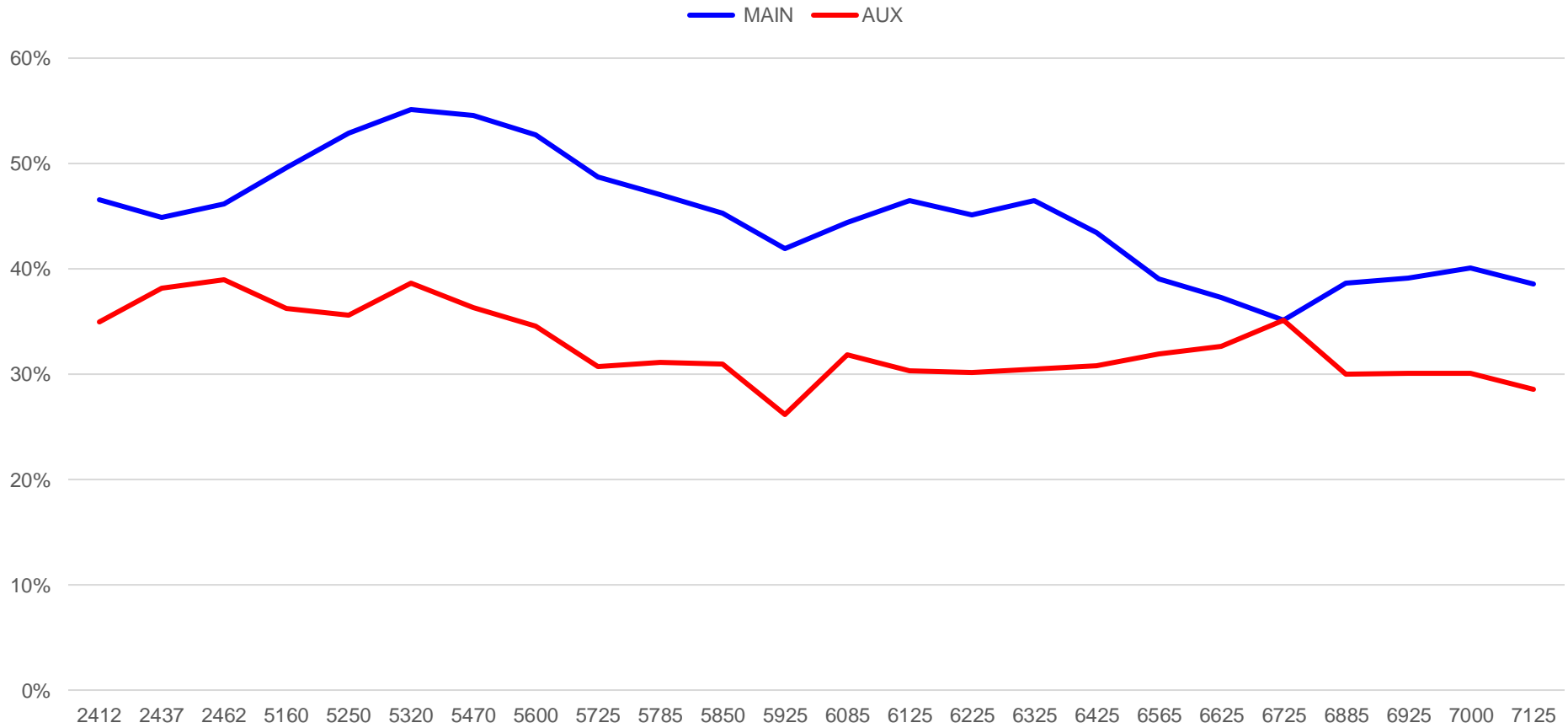
5. Measured Isolation

S21

2023/12/25 下午 05:31:55



5. Measured Efficiency



8. Conclusion

	VSWR	Efficiency (%)	3D Peak gain (dBi)	X-Y plane Peak gain (dBi)
WLAN	<2.5 @ 2.4~2.5 GHz	45~47 @ 2.4~2.5 GHz	2.4~2.61 @ 2.4~2.5 GHz	0.63~0.96 @ 2.4~2.5 GHz
	<2.5 @ 5.15~5.85 GHz	45~55 @ 5.15~5.85 GHz	1.5~2.98 @ 5.15~5.85 GHz	-3.64~-2.6 @ 5.15~5.85 GHz
MAIN	<2.5 @ 5.925~7.125 GHz	35~46 @ 5.925~7.125 GHz	1.94~2.83 @ 5.925~7.125 GHz	-3.75~-0.11 @ 5.925~7.125 GHz
WLAN	<2.5 @ 2.4~2.5 GHz	35~39 @ 2.4~2.5 GHz	2.37~2.38 @ 2.4~2.5 GHz	-3.05~-2.85 @ 2.4~2.5 GHz
	<2.5 @ 5.15~5.85 GHz	31~39 @ 5.15~5.85 GHz	2.05~2.96 @ 5.15~5.85 GHz	-2.35~-0.79 @ 5.15~5.85 GHz
AUX	<2.5 @ 5.925~7.125 GHz	26~35 @ 5.925~7.125 GHz	0.92~2.95 @ 5.925~7.125 GHz	-2.65~-0.76 @ 5.925~7.125 GHz



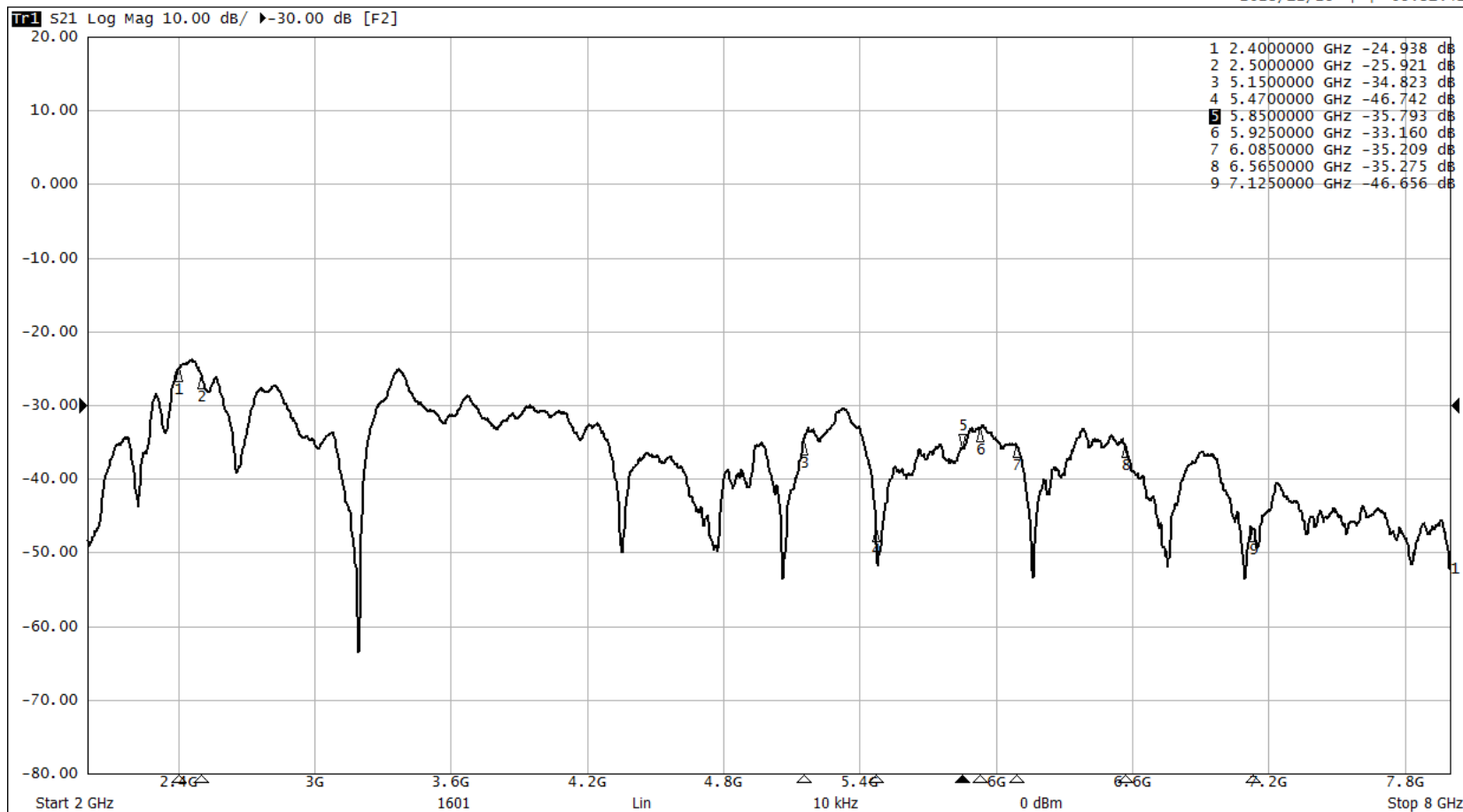
Table mode



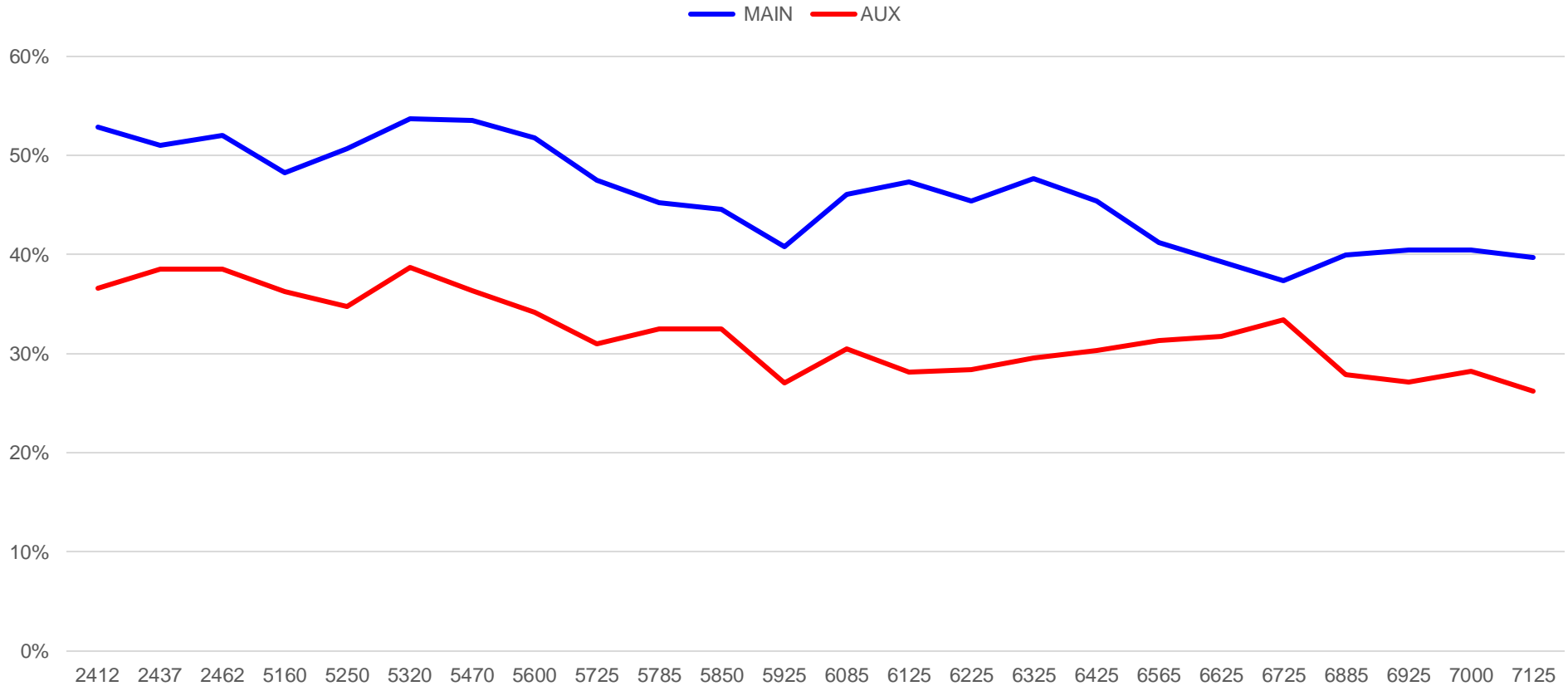
5. Measured Isolation

S21

2023/12/25 下午 05:31:41



5. Measured Efficiency



8. Conclusion

	VSWR	Efficiency (%)	3D Peak gain (dBi)	X-Y plane Peak gain (dBi)
WLAN	<2.5 @ 2.4~2.5 GHz	51~53 @ 2.4~2.5 GHz	2.52~2.9 @ 2.4~2.5 GHz	-1.57~-1.29 @ 2.4~2.5 GHz
	<2.5 @ 5.15~5.85 GHz	45~54 @ 5.15~5.85 GHz	1.66~2.76 @ 5.15~5.85 GHz	-3.95~-0.45 @ 5.15~5.85 GHz
MAIN	<2.5 @ 5.925~7.125 GHz	37~48 @ 5.925~7.125 GHz	1.15~2.75 @ 5.925~7.125 GHz	-2.29~-0.48 @ 5.925~7.125 GHz
WLAN	<2.5 @ 2.4~2.5 GHz	37~38 @ 2.4~2.5 GHz	1.79~2.18 @ 2.4~2.5 GHz	-3.7~-2.28 @ 2.4~2.5 GHz
	<2.5 @ 5.15~5.85 GHz	31~39 @ 5.15~5.85 GHz	1.86~2.9 @ 5.15~5.85 GHz	-0.85~-0.51 @ 5.15~5.85 GHz
AUX	<2.5 @ 5.925~7.125 GHz	26~33 @ 5.925~7.125 GHz	0.55~2.92 @ 5.925~7.125 GHz	-1.81~-0.49 @ 5.925~7.125 GHz

