

Constance_RTU(ZA0) C Build Antenna Test Report

Provide by: Yuchen

Reviewed by : Jason GC Wang

Date: 2022/12/20

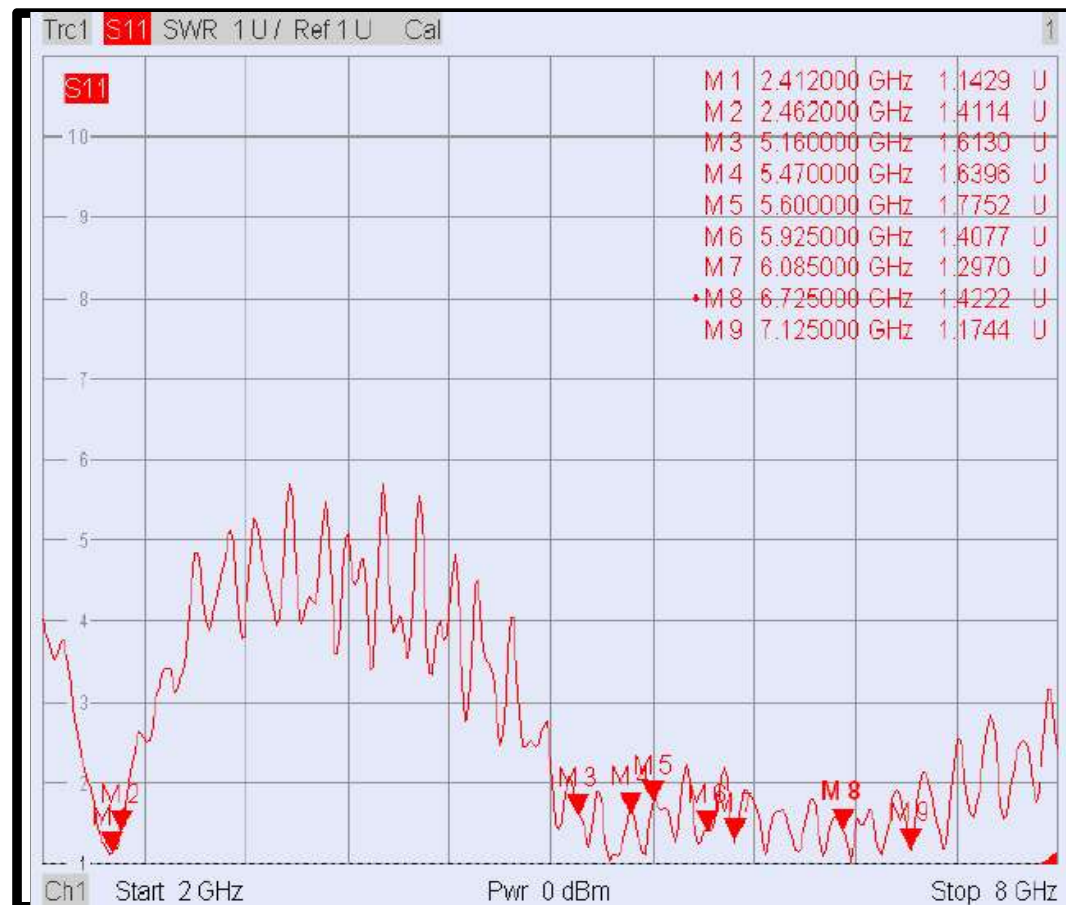
Rev:1



5. Measured Efficiency & VSWR(Open)

Frequency (MHZ)	X-Y Plane Peak Gain (dBi)	3D PEAK Gain (dBi)	Efficiency (%/ dB)	
2412	-2.36	2.88	48%	-3.14
2437	-2.96	2.61	47%	-3.27
2462	-4.01	2.59	47%	-3.28
5160	-2.29	2.19	31%	-5.10
5250	0.11	2.91	36%	-4.50
5320	-1.01	2.17	38%	-4.23
5470	-2.06	0.96	35%	-4.62
5600	-0.22	2.47	33%	-4.82
5725	0.33	1.50	36%	-4.47
5785	-0.06	0.88	34%	-4.75
5850	-0.42	1.78	32%	-4.90
5925	-0.49	0.98	32%	-4.95
6085	-4.13	0.18	28%	-5.59
6125	-3.20	0.95	28%	-5.46
6225	-3.40	1.66	32%	-4.99
6325	-0.76	0.89	28%	-5.48
6425	-1.05	1.36	28%	-5.56
6565	-0.50	2.05	29%	-5.44
6625	-0.41	2.12	29%	-5.44
6725	-1.73	1.50	28%	-5.59
6885	-1.22	2.48	28%	-5.58
6925	-0.13	2.32	28%	-5.58
7000	-0.56	2.39	26%	-5.90
7125	-0.64	2.09	24%	-6.20

WLAN Main / Black



5. Measured Efficiency & VSWR(Open)

Frequency (MHZ)	X-Y Plane Peak Gain (dBi)	3D PEAK Gain (dBi)	Efficiency (%/ dB)	
2412	-4.00	2.78	43%	-3.69
2437	-3.97	2.62	41%	-3.90
2462	-4.34	2.62	39%	-4.04
5160	-3.89	1.34	26%	-5.78
5250	-3.60	1.28	27%	-5.62
5320	-4.34	0.14	28%	-5.54
5470	-3.19	1.03	27%	-5.62
5600	-4.50	1.73	28%	-5.60
5725	-3.79	1.16	28%	-5.60
5785	-4.96	0.03	27%	-5.73
5850	-4.25	0.06	25%	-5.93
5925	-3.30	0.21	23%	-6.34
6085	-3.13	0.01	20%	-6.93
6125	-4.01	0.15	20%	-7.02
6225	-2.02	1.21	21%	-6.74
6325	-2.83	0.91	22%	-6.52
6425	-3.19	0.78	21%	-6.78
6565	-2.37	0.36	21%	-6.83
6625	-2.83	0.86	21%	-6.82
6725	-5.14	1.10	23%	-6.45
6885	-3.62	0.85	20%	-7.06
6925	-3.24	1.27	21%	-6.82
7000	-3.10	1.40	21%	-6.72
7125	-2.69	1.11	19%	-7.11

WLAN Aux / White



5. Measured Efficiency & VSWR(Tablet)

Frequency (MHZ)	X-Y Plane Peak Gain (dBi)	3D PEAK Gain (dBi)	Efficiency (%/ dB)	
2412	-2.27	2.83	36%	-4.48
2437	-2.66	2.77	35%	-4.58
2462	-3.66	2.85	35%	-4.60
5160	-2.03	-0.59	25%	-6.03
5250	-1.62	1.06	29%	-5.41
5320	-2.75	1.29	29%	-5.35
5470	-1.15	-0.34	25%	-6.03
5600	-0.52	0.24	27%	-5.62
5725	-2.10	0.74	29%	-5.33
5785	-3.13	0.09	28%	-5.51
5850	-2.99	0.52	26%	-5.80
5925	-2.89	0.17	25%	-5.97
6085	-3.75	0.13	25%	-6.09
6125	-2.97	0.52	25%	-6.05
6225	-2.97	0.67	27%	-5.68
6325	-2.70	0.02	24%	-6.20
6425	-2.83	0.38	24%	-6.24
6565	-2.63	0.15	25%	-6.10
6625	-2.15	0.18	25%	-6.06
6725	-2.02	0.35	24%	-6.24
6885	-1.36	0.54	24%	-6.17
6925	-1.05	0.62	25%	-6.08
7000	-1.94	0.42	23%	-6.33
7125	-1.39	0.68	21%	-6.83

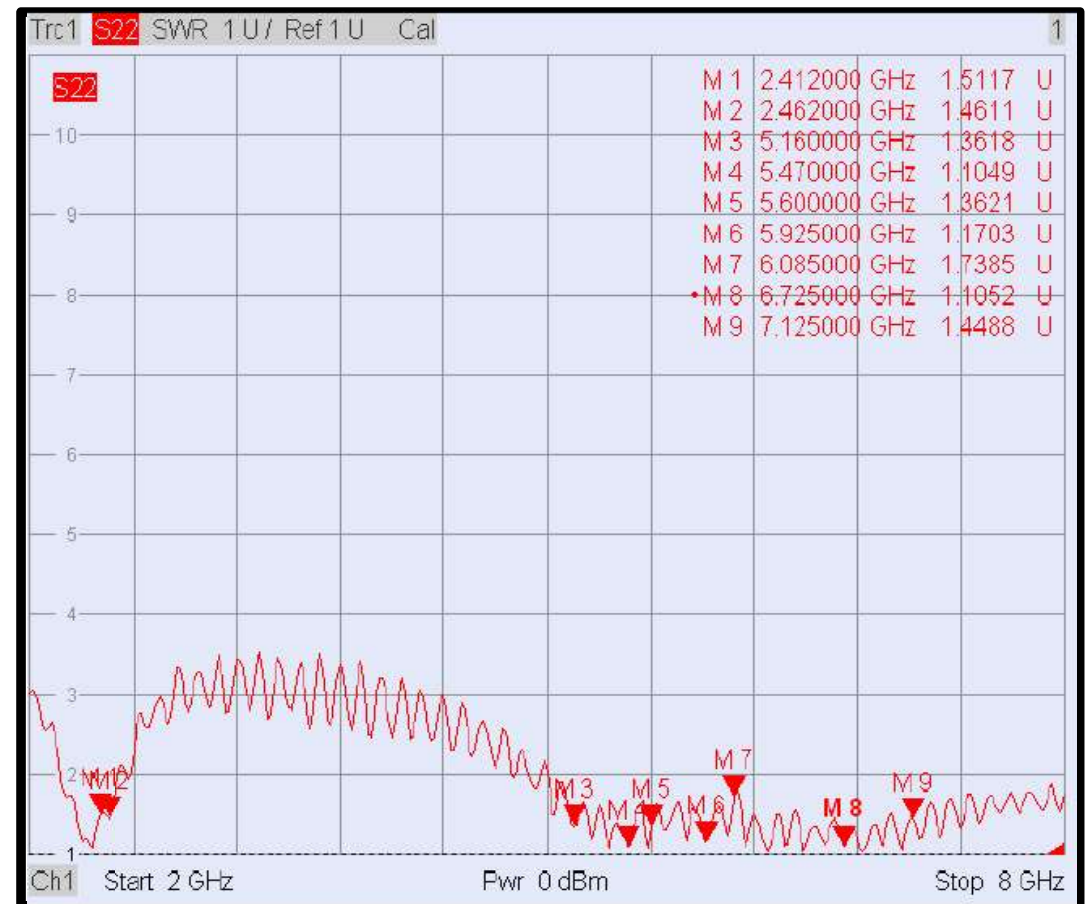
WLAN Main / Black



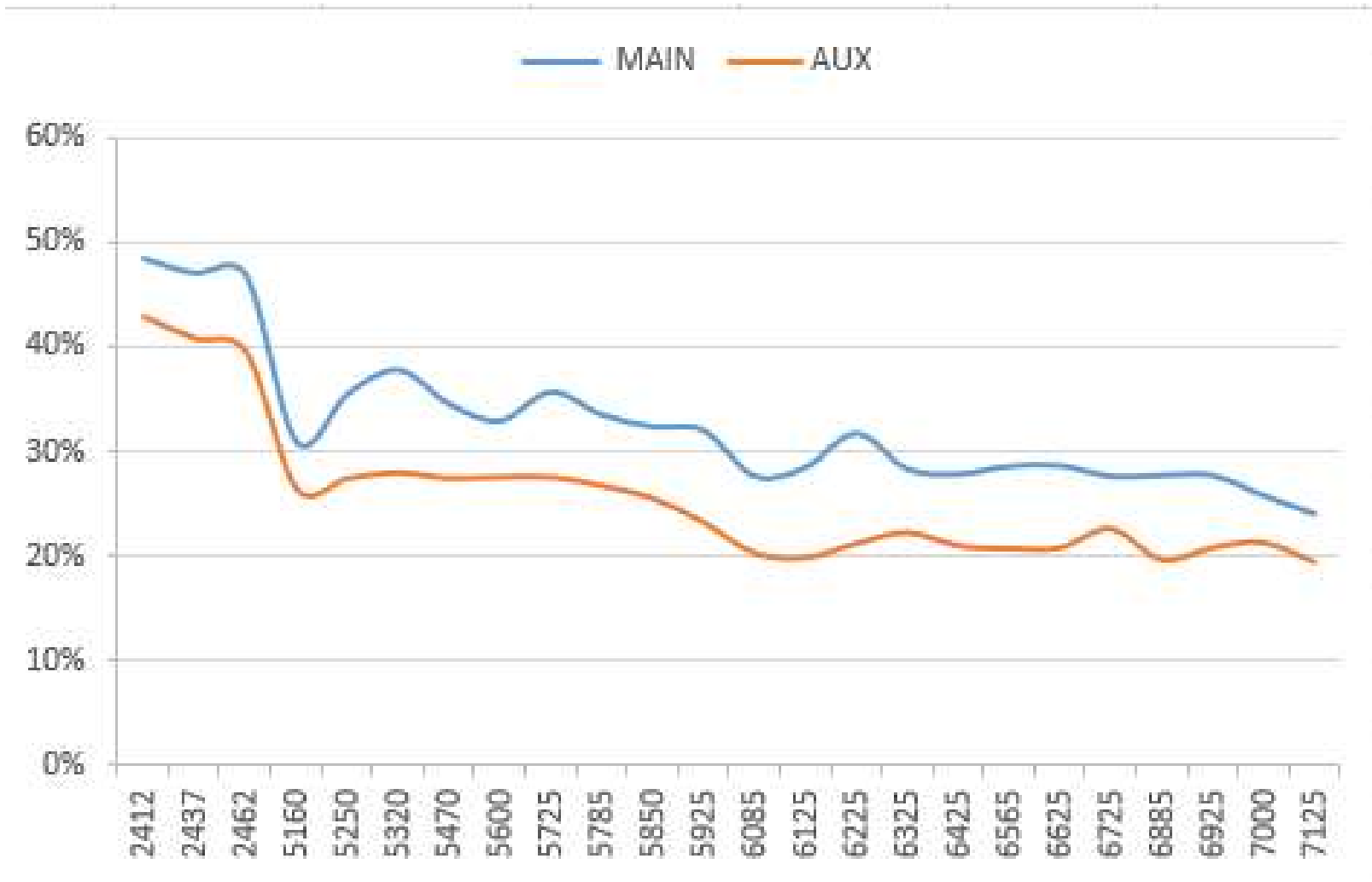
5. Measured Efficiency & VSWR(Tablet)

Frequency (MHZ)	X-Y Plane Peak Gain (dBi)	3D PEAK Gain (dBi)	Efficiency (%/ dB)	
2412	-4.79	2.84	31%	-5.10
2437	-5.29	2.97	31%	-5.10
2462	-4.96	2.59	32%	-5.00
5160	-3.86	-0.85	21%	-6.73
5250	-3.60	-0.36	24%	-6.22
5320	-3.36	-0.41	25%	-6.07
5470	-3.29	-1.01	24%	-6.15
5600	-3.93	-0.67	24%	-6.19
5725	-3.28	-0.66	23%	-6.36
5785	-4.71	0.03	22%	-6.61
5850	-4.69	0.06	20%	-7.06
5925	-2.99	0.37	21%	-6.88
6085	-3.83	0.38	18%	-7.37
6125	-4.14	0.09	18%	-7.51
6225	-3.76	0.77	19%	-7.22
6325	-3.63	0.24	18%	-7.37
6425	-3.86	0.14	18%	-7.47
6565	-4.42	0.83	18%	-7.48
6625	-5.16	0.63	19%	-7.23
6725	-4.22	0.03	20%	-7.02
6885	-4.24	0.47	18%	-7.57
6925	-3.53	0.35	19%	-7.30
7000	-3.86	0.63	18%	-7.40
7125	-3.53	0.45	16%	-7.93

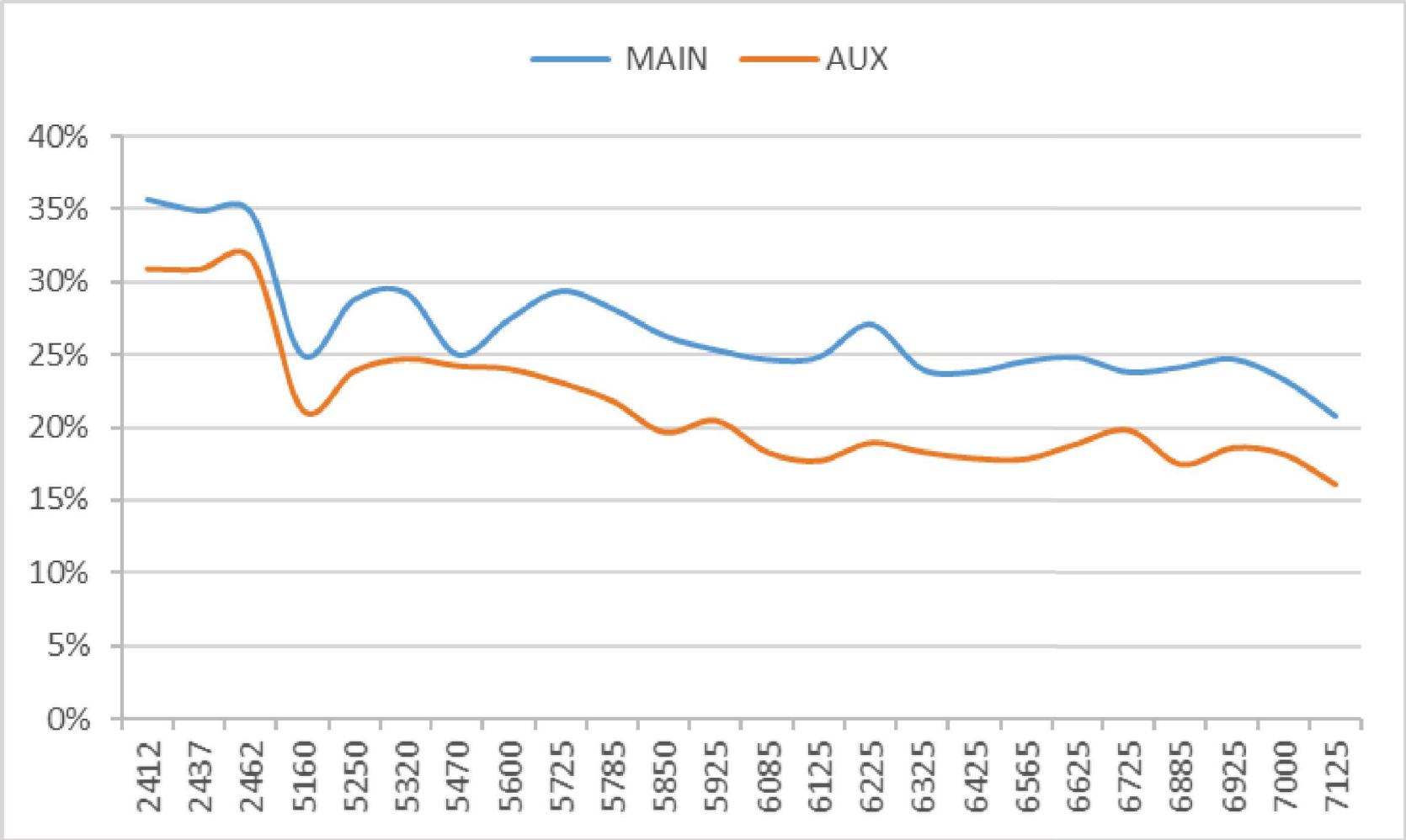
WLAN Aux / White



5. Measured Efficiency(Open)



5. Measured Efficiency (Tablet)



5. Measured Isolation(Open)

S21



5. Measured Isolation (Tablet)

S21

