

Note: antenna photo should include L type ruler

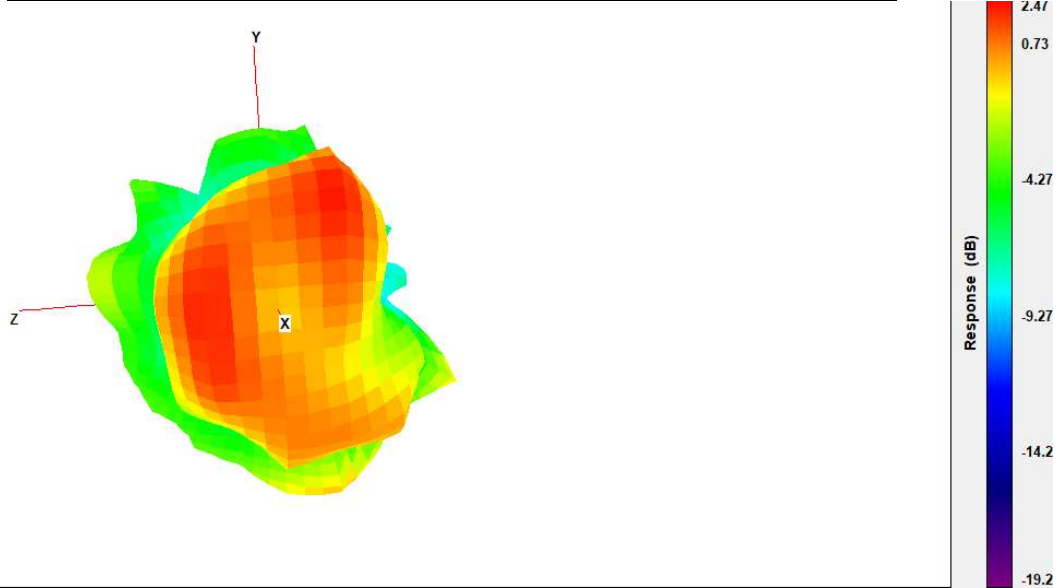
Section 3. Radiation characteristics of antenna loaded in Host Platform

Open Mode

Main Antenna

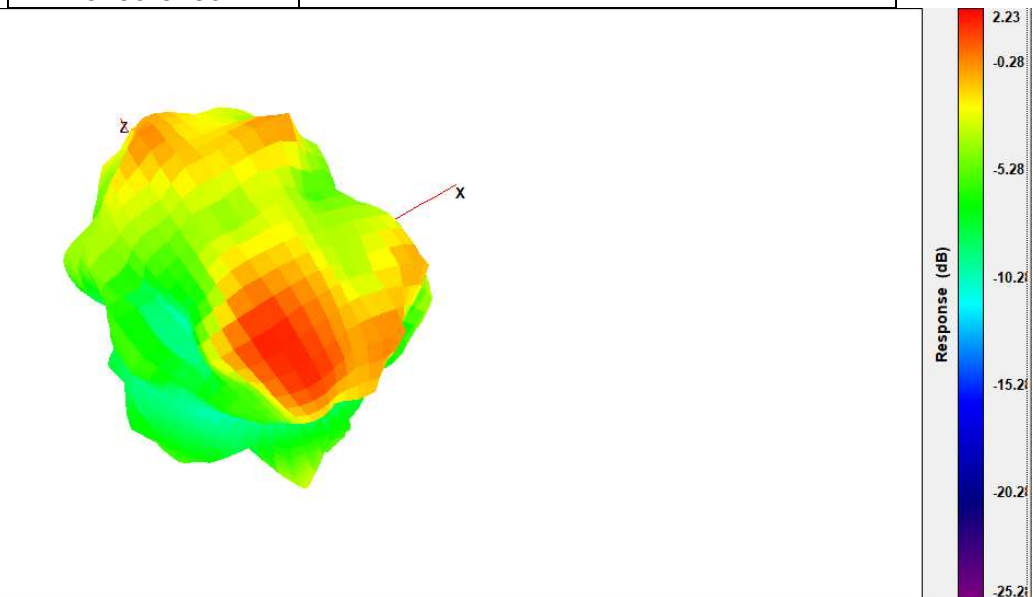
Main Antenna 3D Radiation Pattern 2400 – 2483.5 MHz

Frequency (MHz)	Peak Gain w/o Cable Loss (dBi)
2400-2483.5	2.47



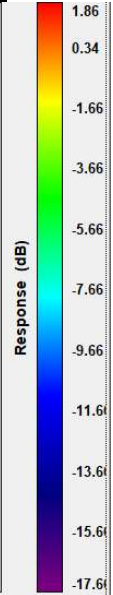
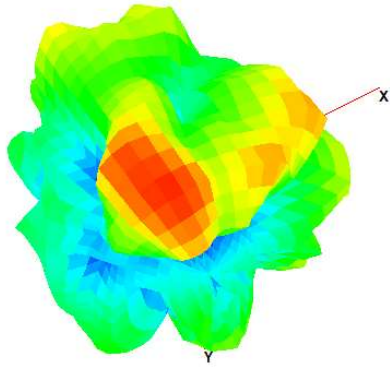
Main Antenna 3D Radiation Pattern 5150-5250 MHz

Frequency (MHz)	Peak Gain w/o Cable Loss (dBi)
5150-5250	2.23



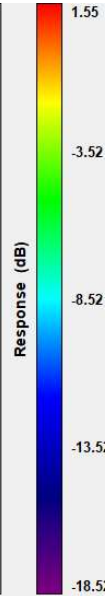
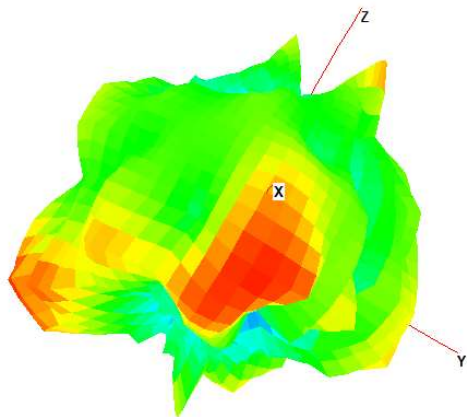
Main Antenna 3D Radiation Pattern 5250-5350 MHz

Frequency (MHz)	Peak Gain w/o Cable Loss (dBi)
5250-5350	1.86



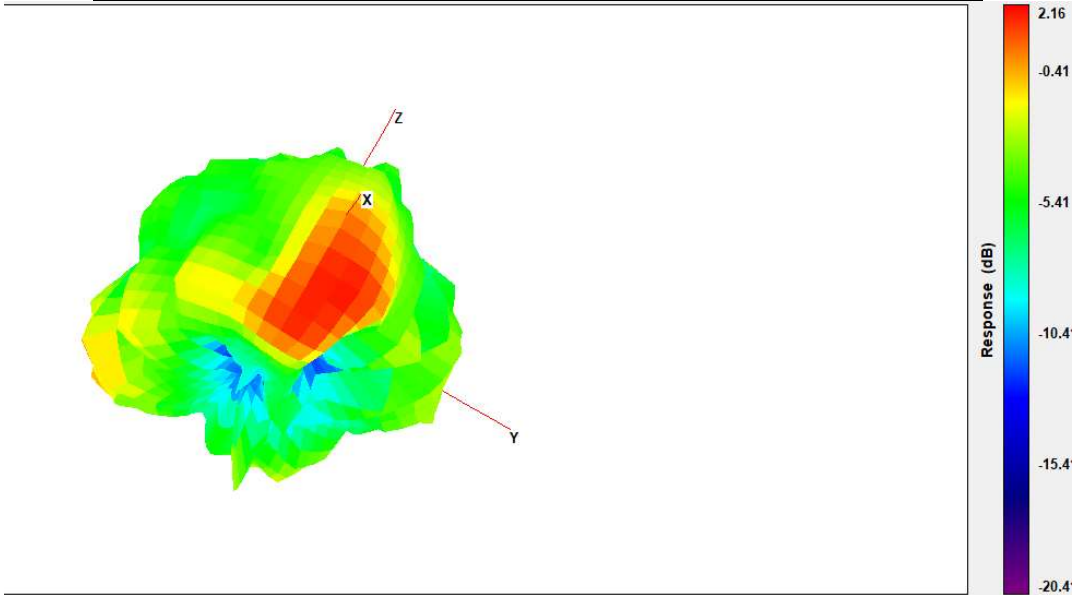
Main Antenna 3D Radiation Pattern 5470-5725 MHz

Frequency (MHz)	Peak Gain w/o Cable Loss (dBi)
5470-5725	1.55



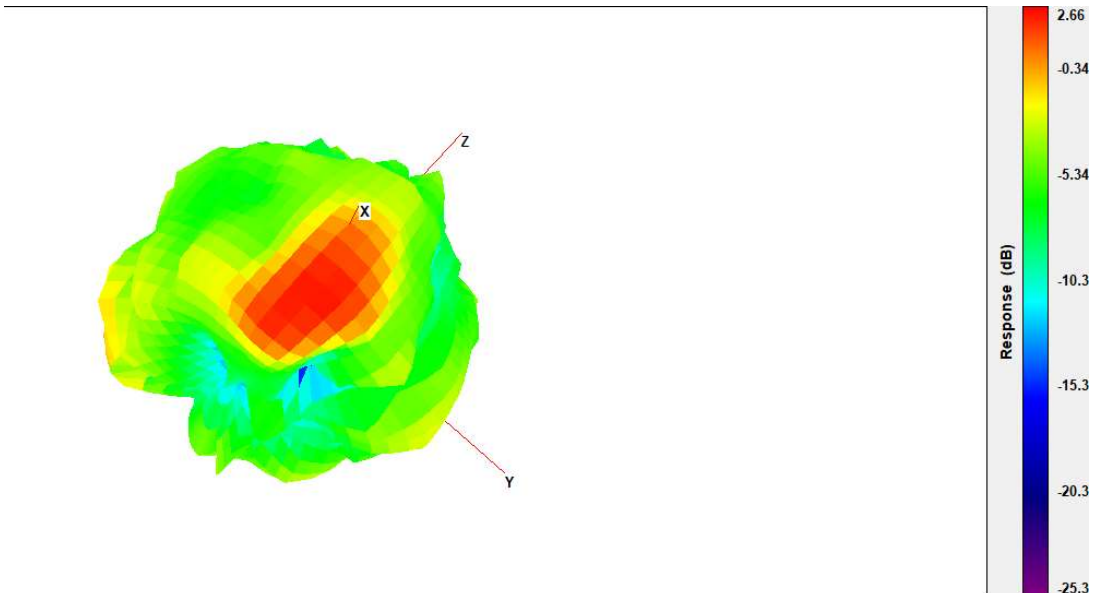
Main Antenna 3D Radiation Pattern 5725-5850 MHz

Frequency (MHz)	Peak Gain w/o Cable Loss (dBi)
5725-5850	2.16



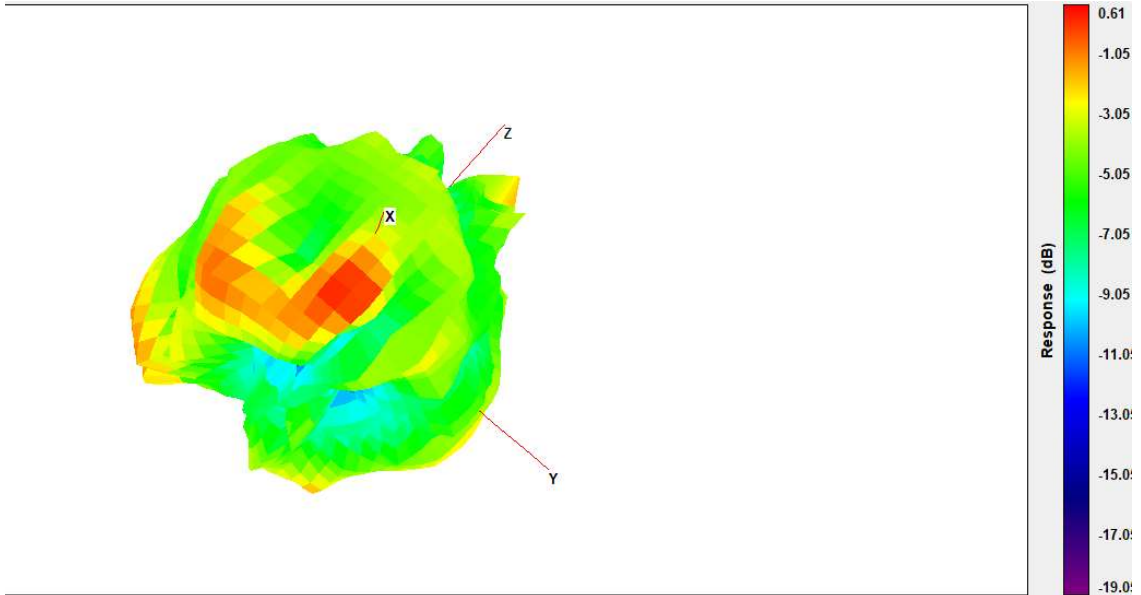
Main Antenna 3D Radiation Pattern 5925-6425 MHz

Frequency (MHz)	Peak Gain w/ Cable Loss (dBi)
5925-6425	2.66



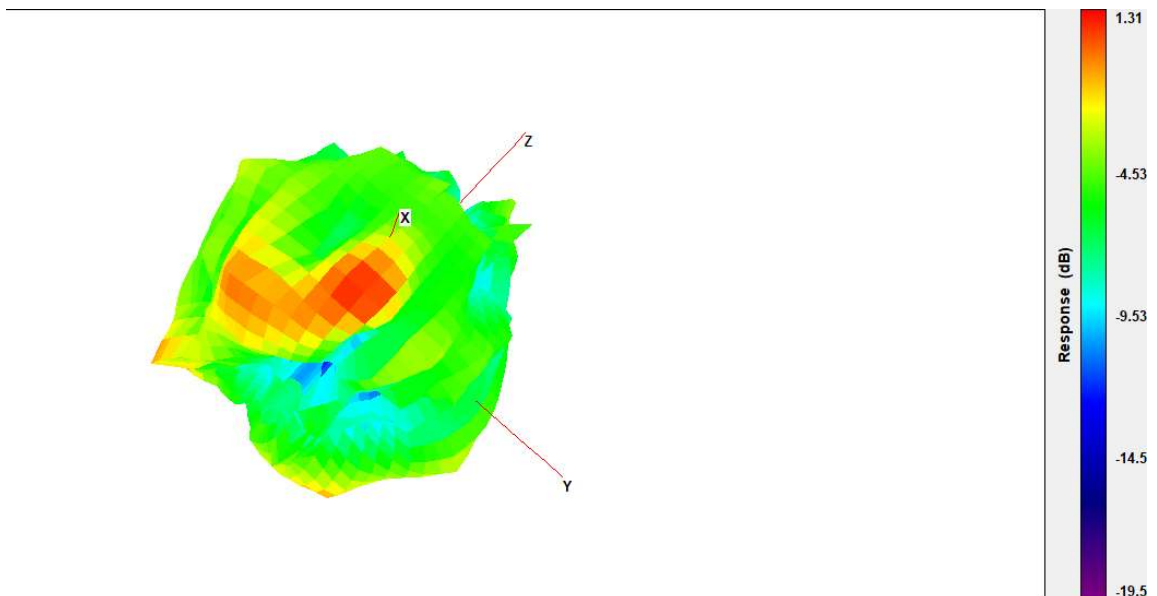
Main Antenna 3D Radiation Pattern 6425-6525 MHz

Frequency (MHz)	Peak Gain w/ Cable Loss (dBi)
6425-6525	0.61



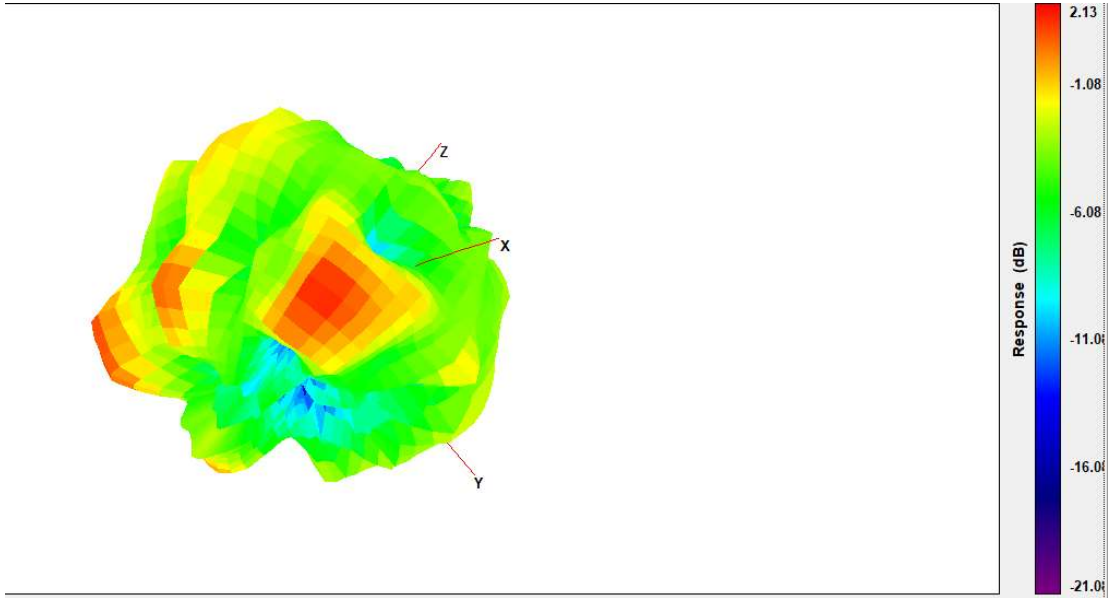
Main Antenna 3D Radiation Pattern 6525-6875 MHz

Frequency (MHz)	Peak Gain w/ Cable Loss (dBi)
6525-6875	1.31



Main Antenna 3D Radiation Pattern 6875-7125 MHz

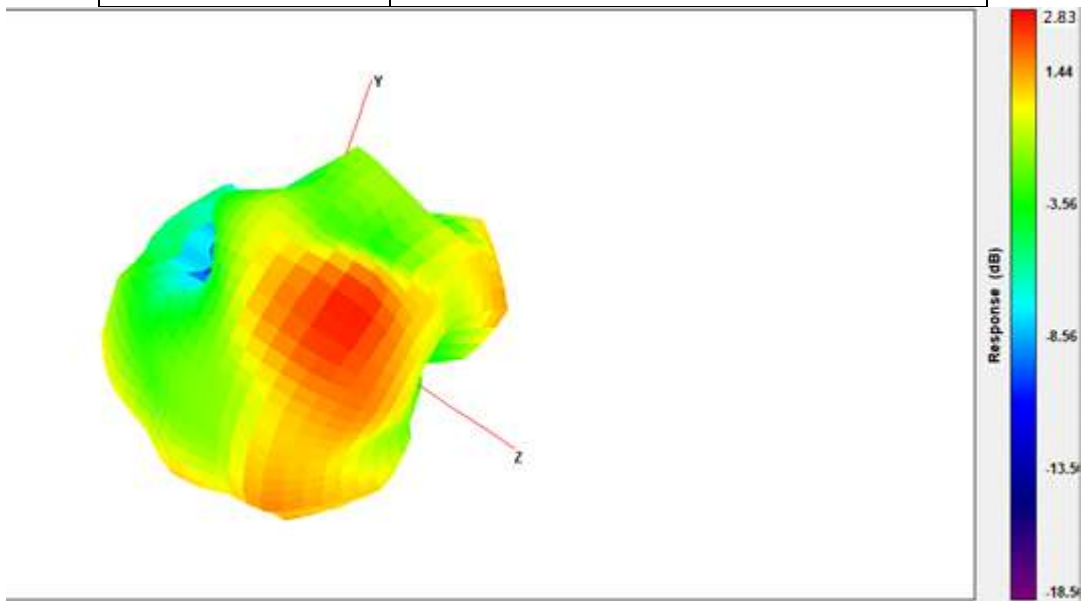
Frequency (MHz)	Peak Gain w/ Cable Loss (dBi)
6875-7125	2.13



Auxiliary Antenna

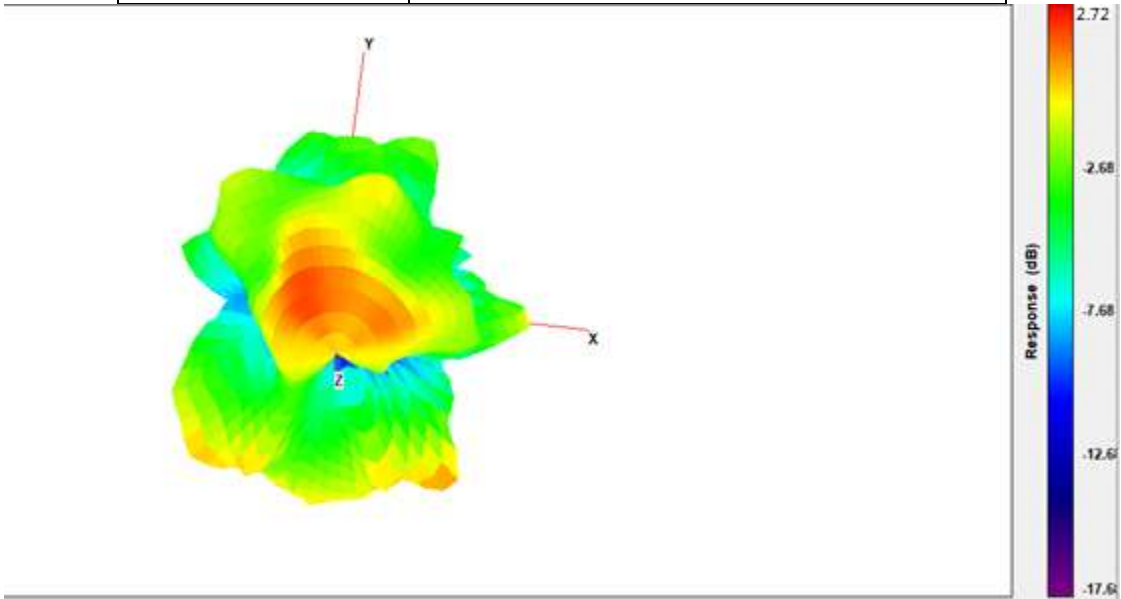
Aux Antenna 3D Radiation Pattern 2400 – 2483.5 MHz

Frequency (MHz)	Peak Gain w/o Cable Loss (dBi)
2400-2483.5	2.83



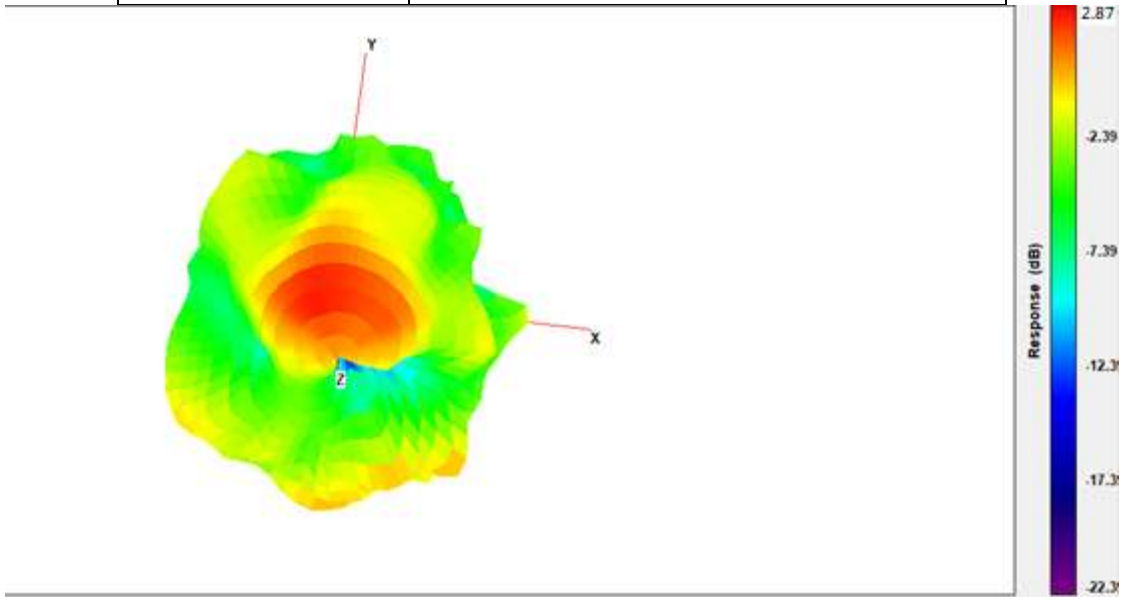
Aux Antenna 3D Radiation Pattern 5150-5250 MHz

Frequency (MHz)	Peak Gain w/o Cable Loss (dBi)
5150-5250	2.72



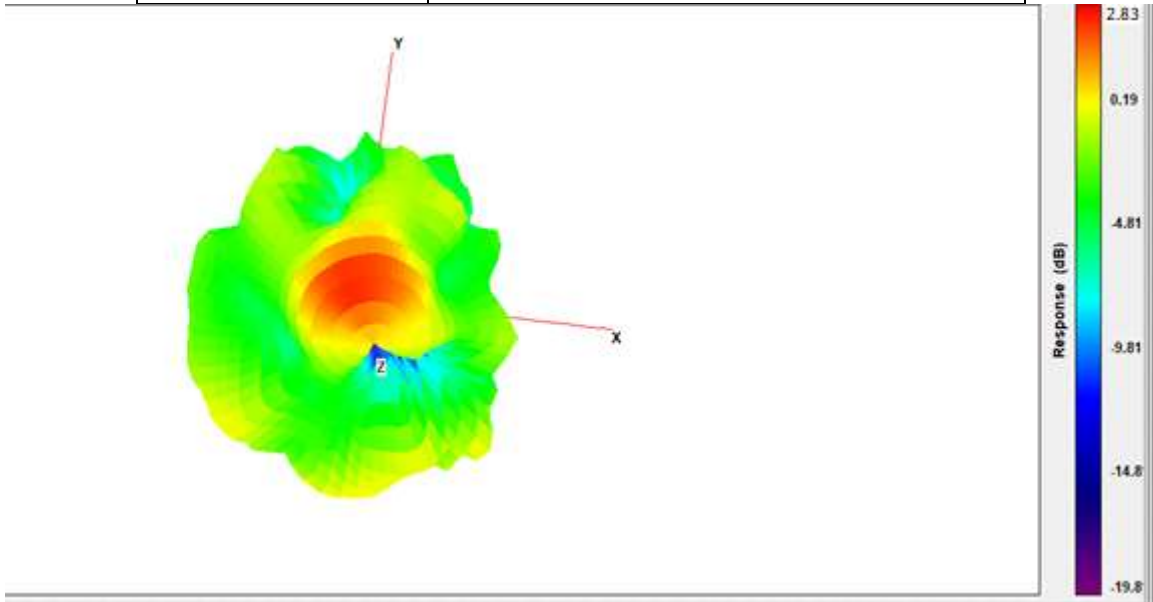
Aux Antenna 3D Radiation Pattern 5250-5350 MHz

Frequency (MHz)	Peak Gain w/o Cable Loss (dBi)
5250-5350	2.87



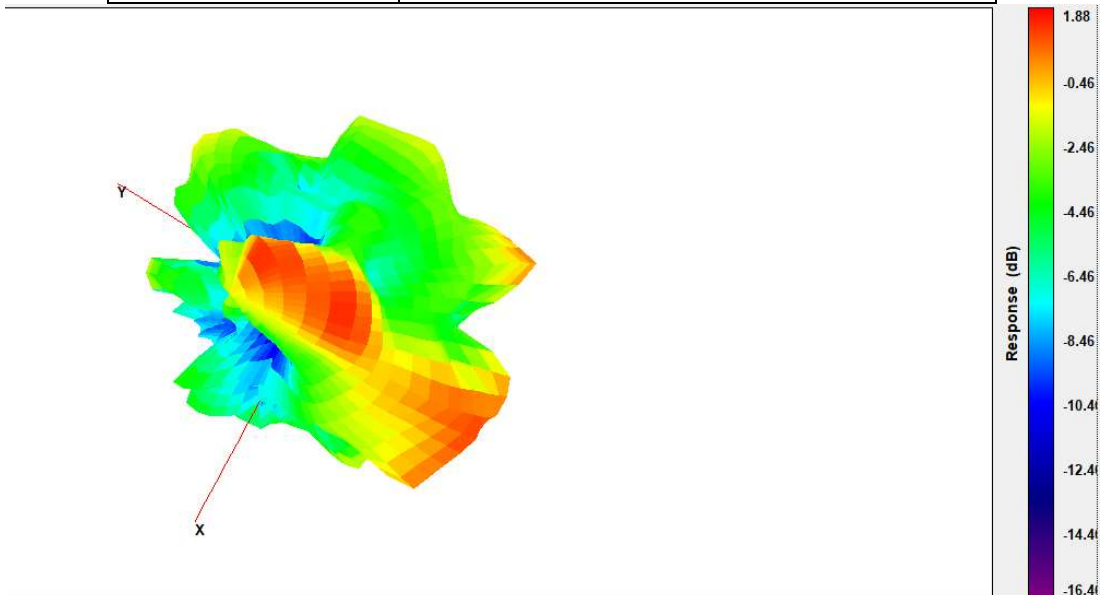
Aux Antenna 3D Radiation Pattern 5470-5725 MHz

Frequency (MHz)	Peak Gain w/o Cable Loss (dBi)
5470-5725	2.83



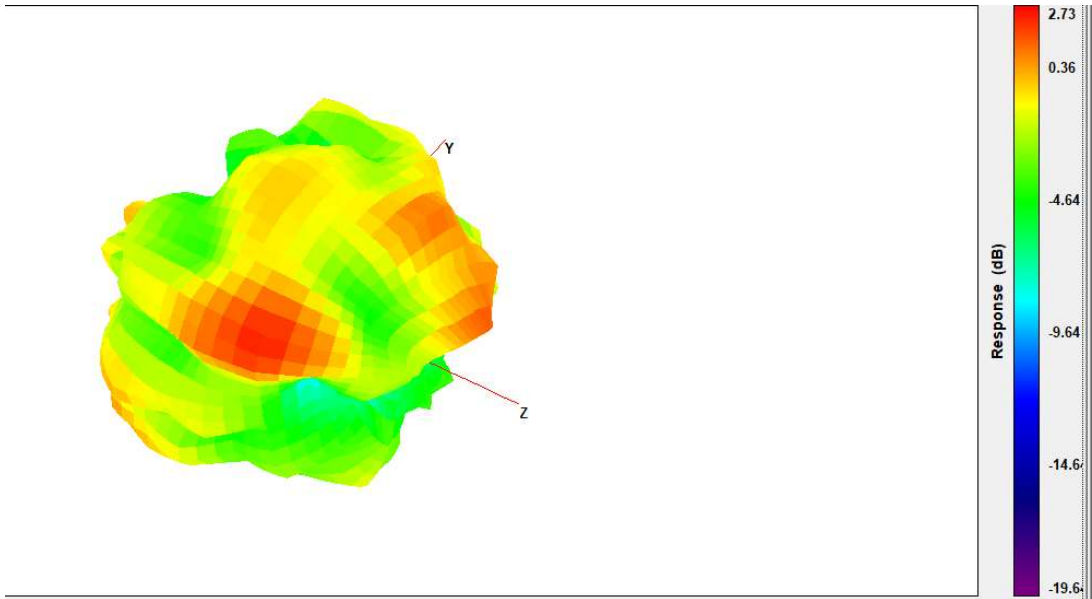
Aux Antenna 3D Radiation Pattern 5725-5850 MHz

Frequency (MHz)	Peak Gain w/o Cable Loss (dBi)
5725-5850	1.88



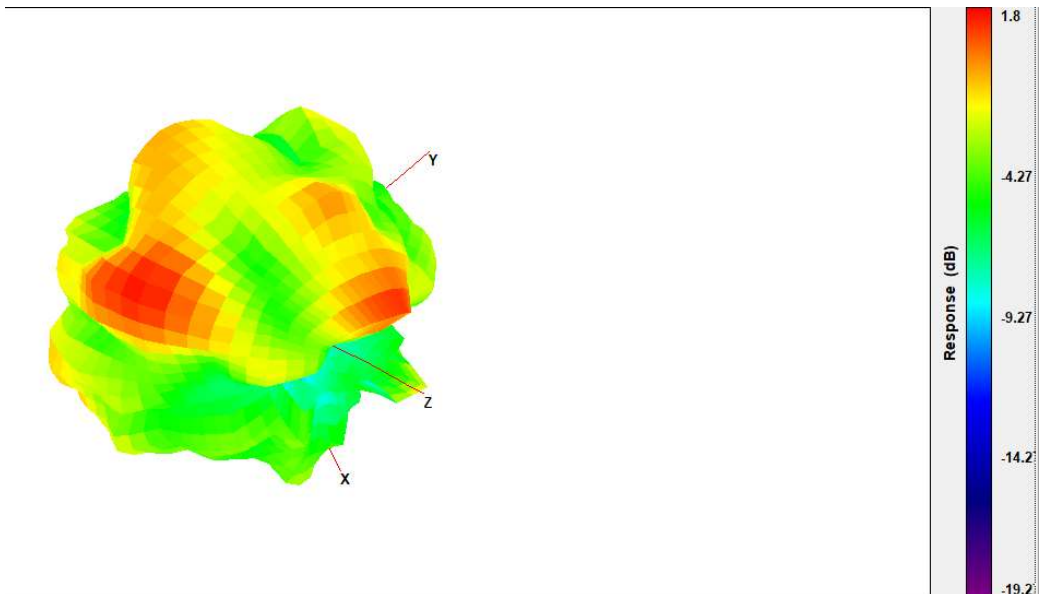
Aux Antenna 3D Radiation Pattern 5925-6425 MHz

Frequency (MHz)	Peak Gain w/ Cable Loss (dBi)
5925-6425	2.73



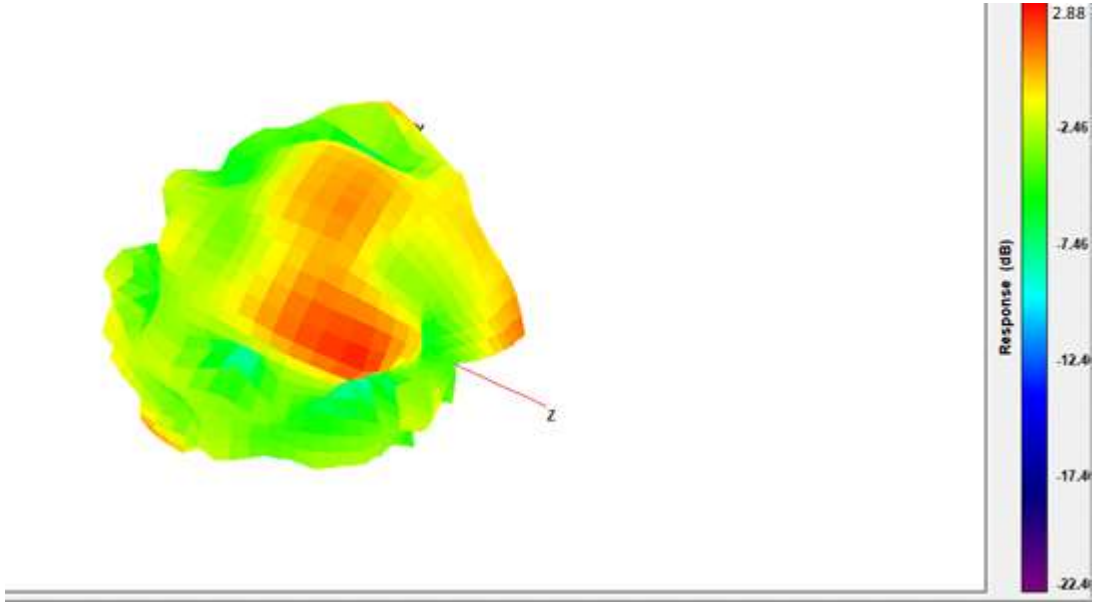
Aux Antenna 3D Radiation Pattern 6425-6525 MHz

Frequency (MHz)	Peak Gain w/ Cable Loss (dBi)
6425-6525	1.80



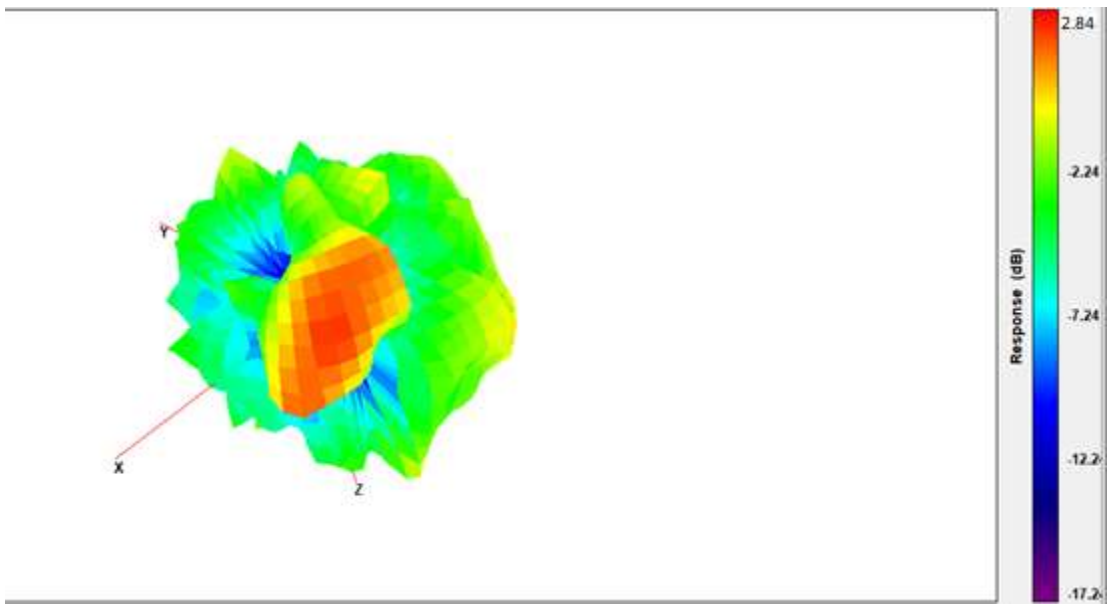
Aux Antenna 3D Radiation Pattern 6525-6875 MHz

Frequency (MHz)	Peak Gain w/ Cable Loss (dBi)
6525-6875	2.88



Aux Antenna 3D Radiation Pattern 6875-7125 MHz

Frequency (MHz)	Peak Gain w/ Cable Loss (dBi)
6875-7125	2.84

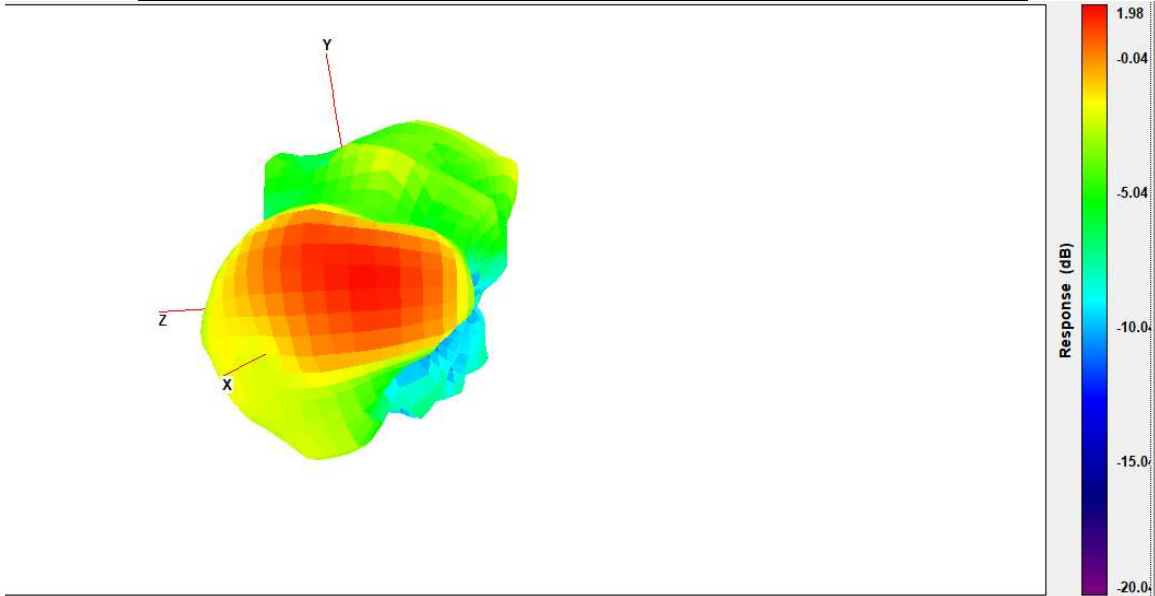


Tablet Mode

Main Antenna

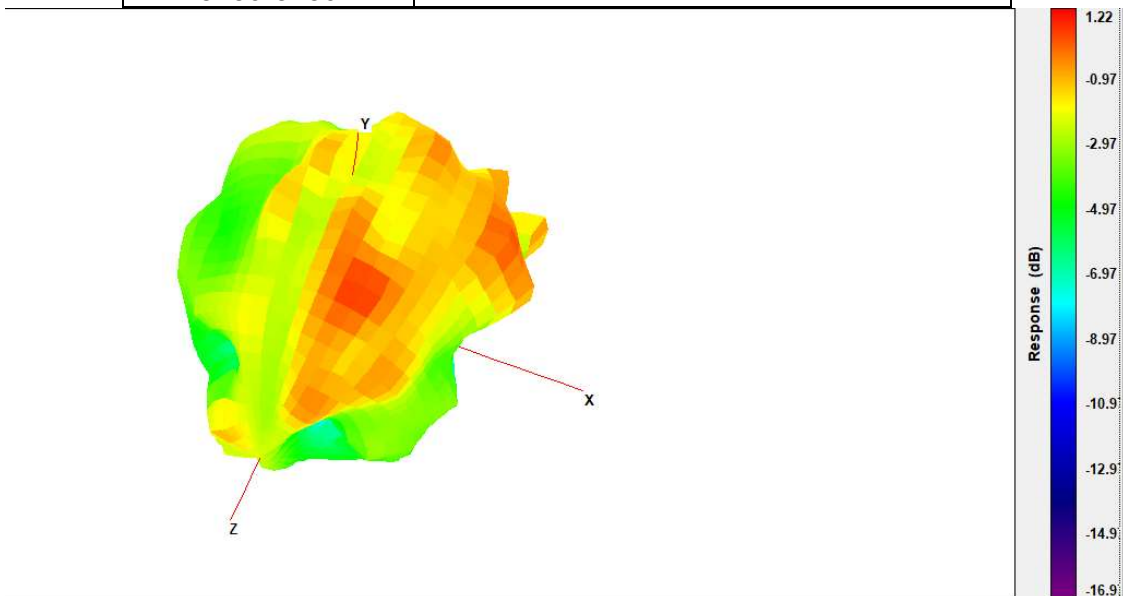
Main Antenna 3D Radiation Pattern 2400 – 2483.5 MHz

Frequency (MHz)	Peak Gain w/o Cable Loss (dBi)
2400-2483.5	1.98



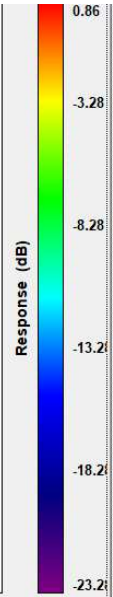
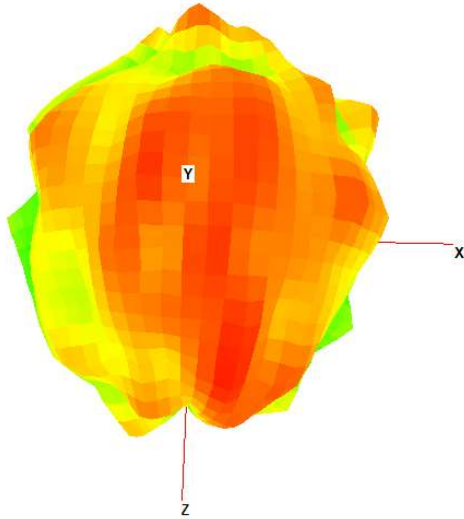
Main Antenna 3D Radiation Pattern 5150-5250 MHz

Frequency (MHz)	Peak Gain w/o Cable Loss (dBi)
5150-5250	1.22



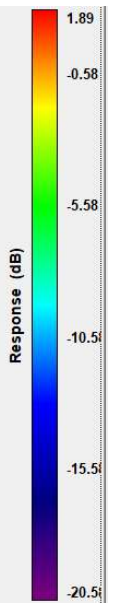
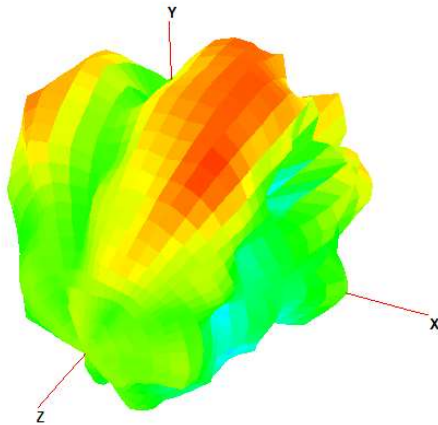
Main Antenna 3D Radiation Pattern 5250-5350 MHz

Frequency (MHz)	Peak Gain w/o Cable Loss (dBi)
5250-5350	0.86



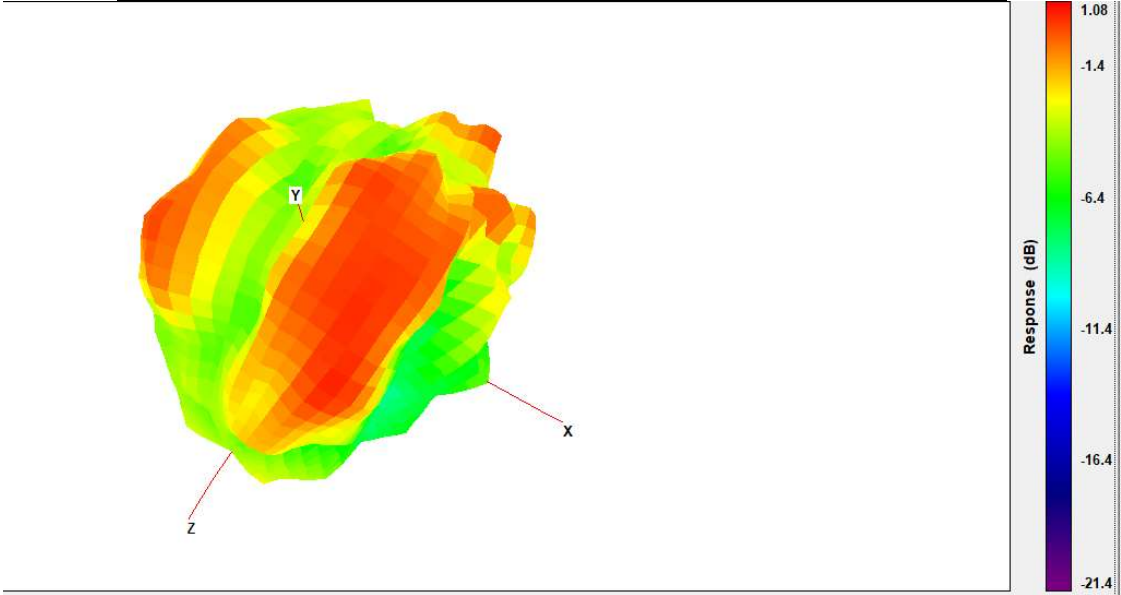
Main Antenna 3D Radiation Pattern 5470-5725 MHz

Frequency (MHz)	Peak Gain w/o Cable Loss (dBi)
5470-5725	1.89



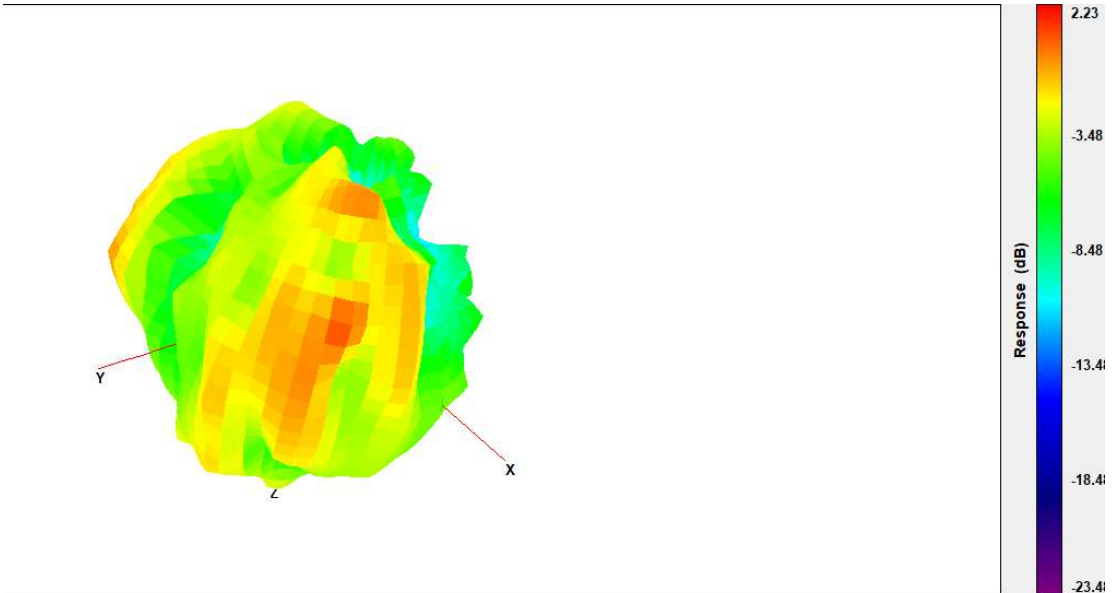
Main Antenna 3D Radiation Pattern 5725-5850 MHz

Frequency (MHz)	Peak Gain w/o Cable Loss (dBi)
5725-5850	1.08



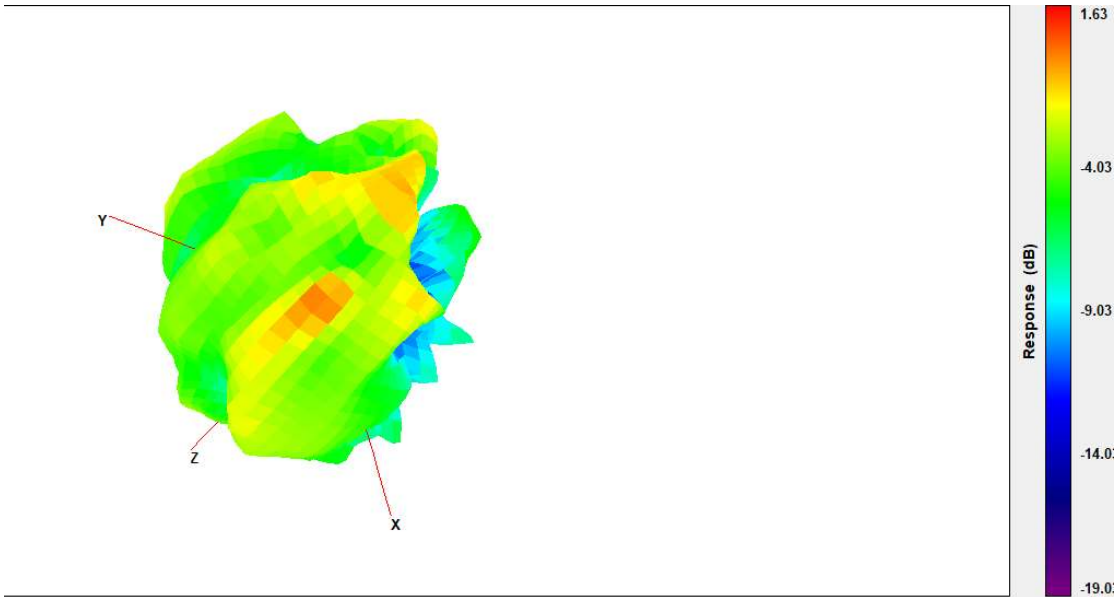
Main Antenna 3D Radiation Pattern 5925-6425 MHz

Frequency (MHz)	Peak Gain w/ Cable Loss (dBi)
5925-6425	2.23



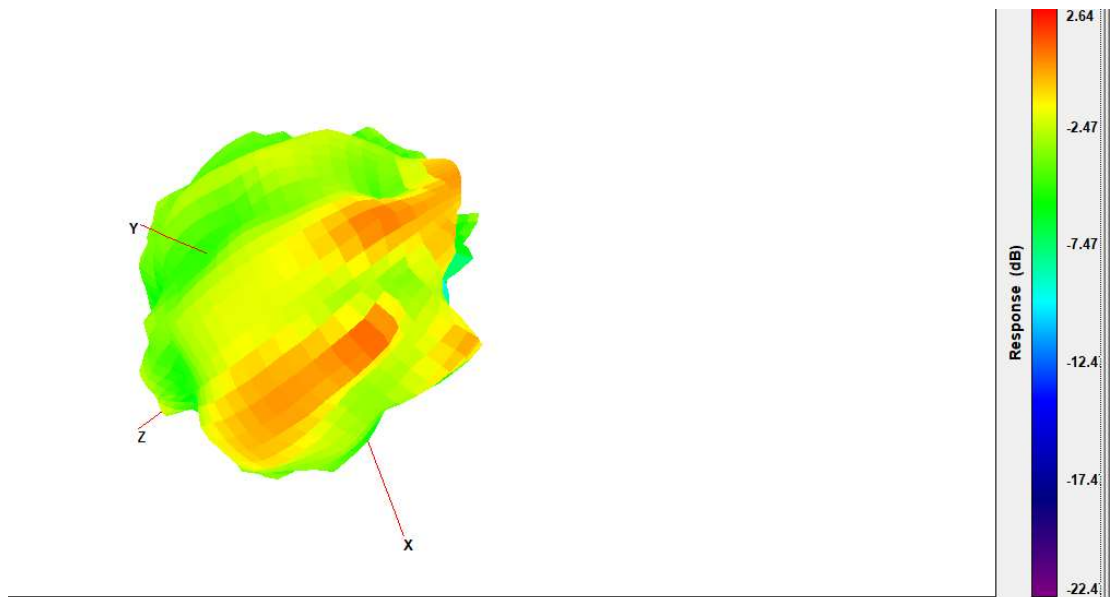
Main Antenna 3D Radiation Pattern 6425-6525 MHz

Frequency (MHz)	Peak Gain w/ Cable Loss (dBi)
6425-6525	1.63



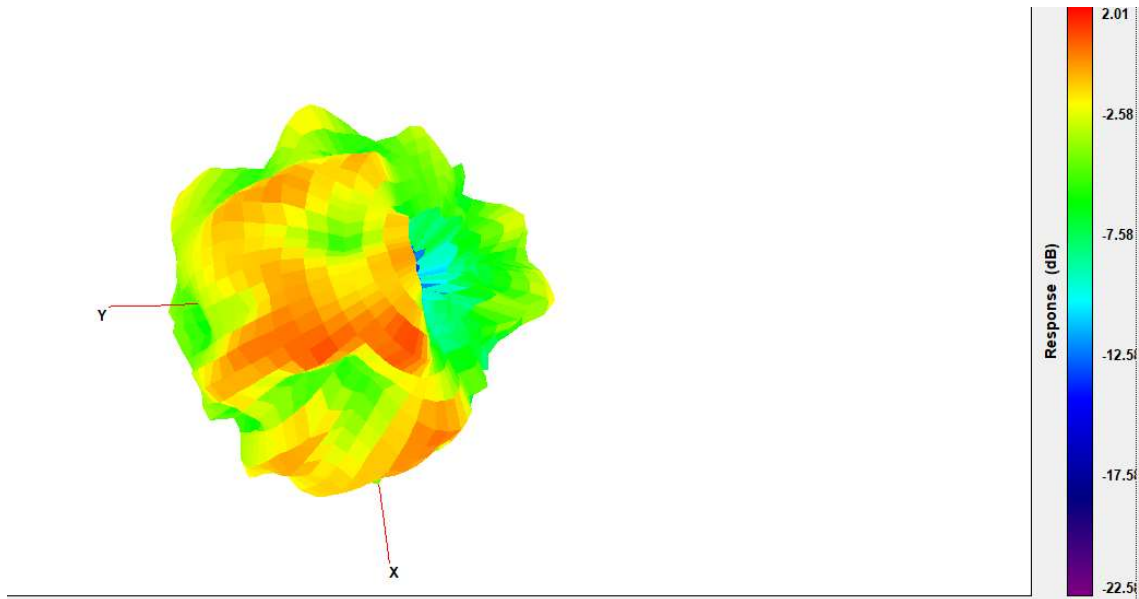
Main Antenna 3D Radiation Pattern 6525-6875 MHz

Frequency (MHz)	Peak Gain w/ Cable Loss (dBi)
6525-6875	2.64



Main Antenna 3D Radiation Pattern 6875-7125 MHz

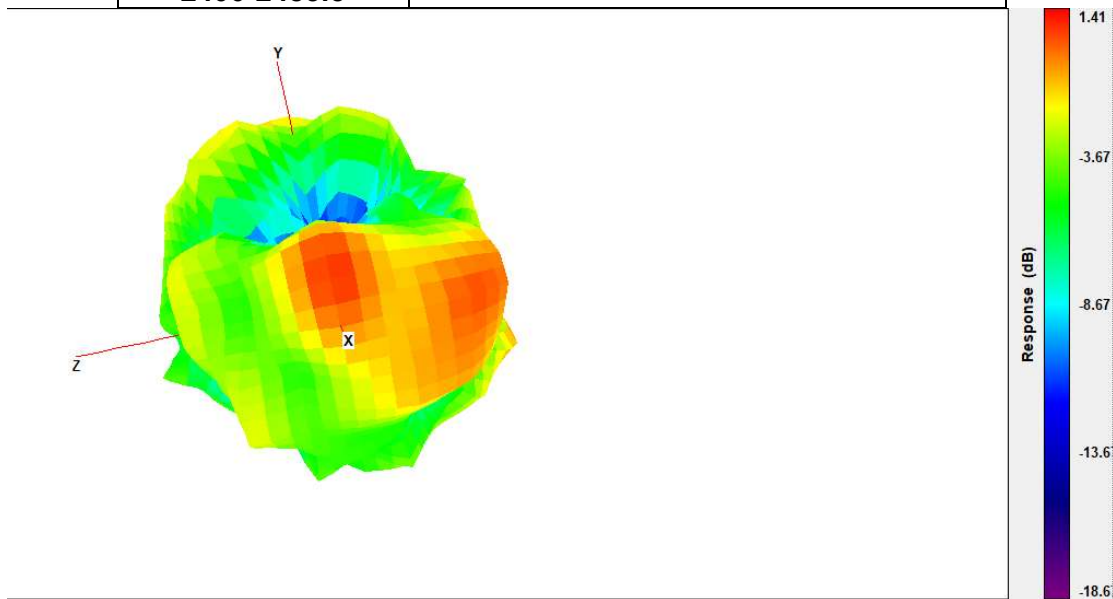
Frequency (MHz)	Peak Gain w/ Cable Loss (dBi)
6875-7125	2.01



Auxiliary Antenna

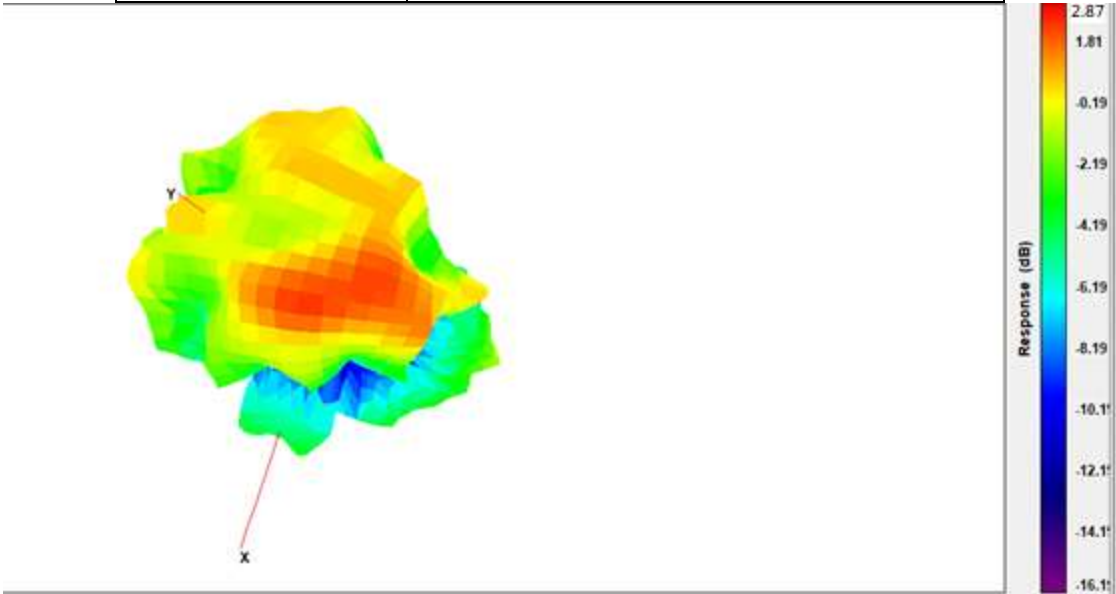
Aux Antenna 3D Radiation Pattern 2400 – 2483.5 MHz

Frequency (MHz)	Peak Gain w/o Cable Loss (dBi)
2400-2483.5	1.41



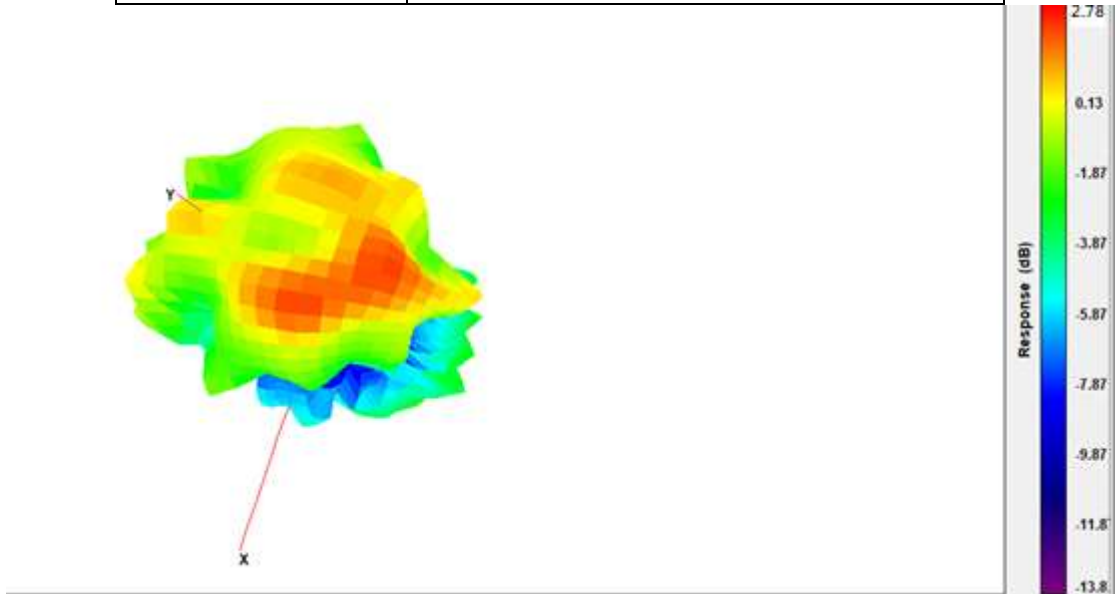
Aux Antenna 3D Radiation Pattern 5150-5250 MHz

Frequency (MHz)	Peak Gain w/o Cable Loss (dBi)
5150-5250	2.87



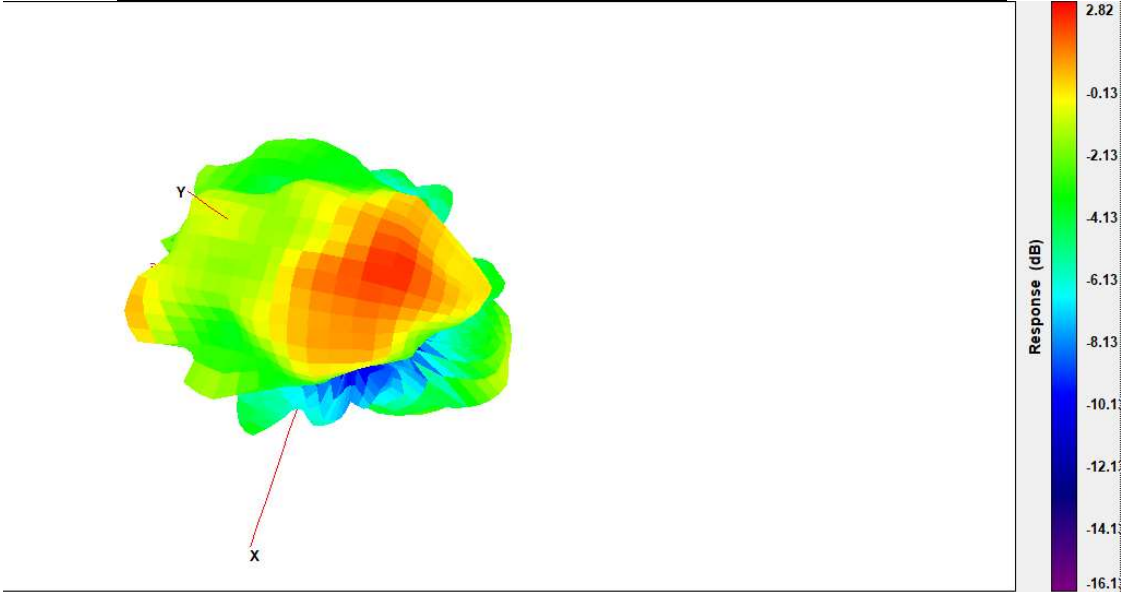
Aux Antenna 3D Radiation Pattern 5250-5350 MHz

Frequency (MHz)	Peak Gain w/o Cable Loss (dBi)
5250-5350	2.78



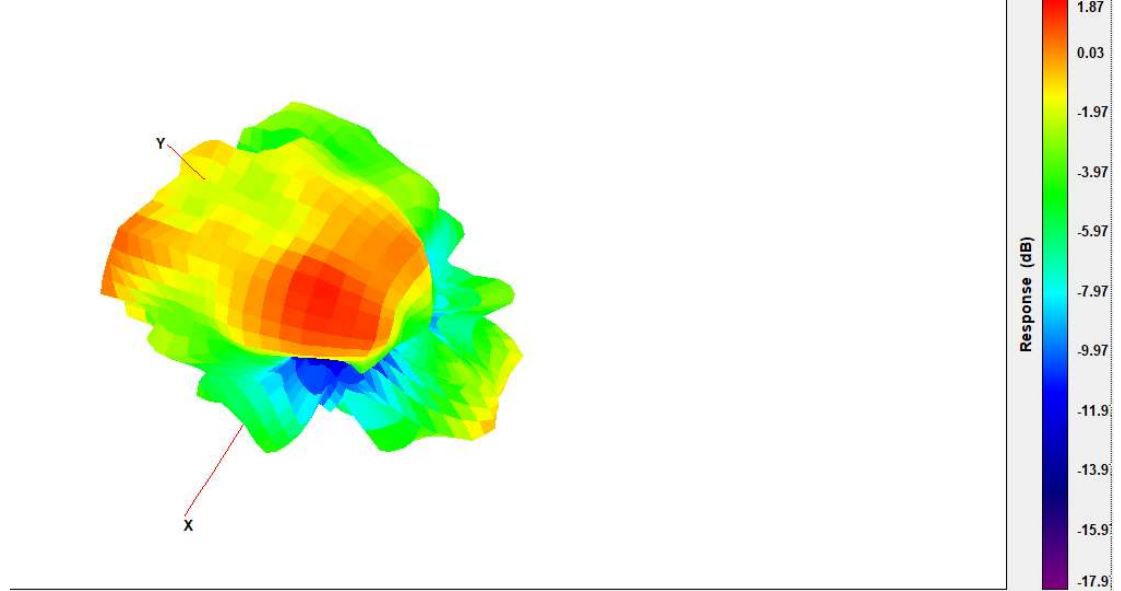
Aux Antenna 3D Radiation Pattern 5470-5725 MHz

Frequency (MHz)	Peak Gain w/o Cable Loss (dBi)
5470-5725	2.82



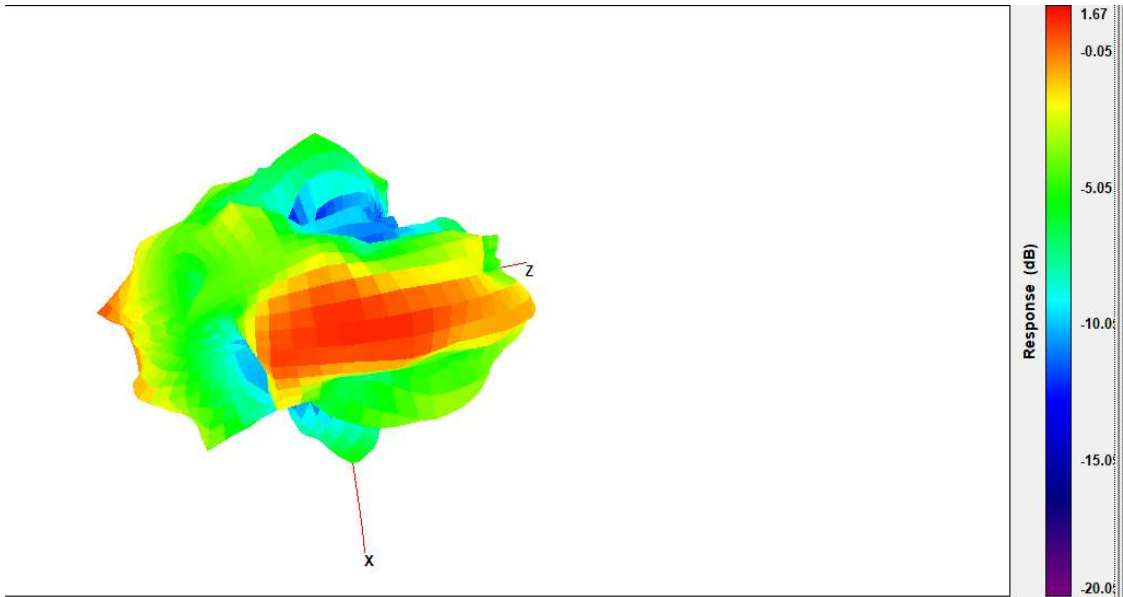
Aux Antenna 3D Radiation Pattern 5725-5850 MHz

Frequency (MHz)	Peak Gain w/o Cable Loss (dBi)
5725-5850	1.87



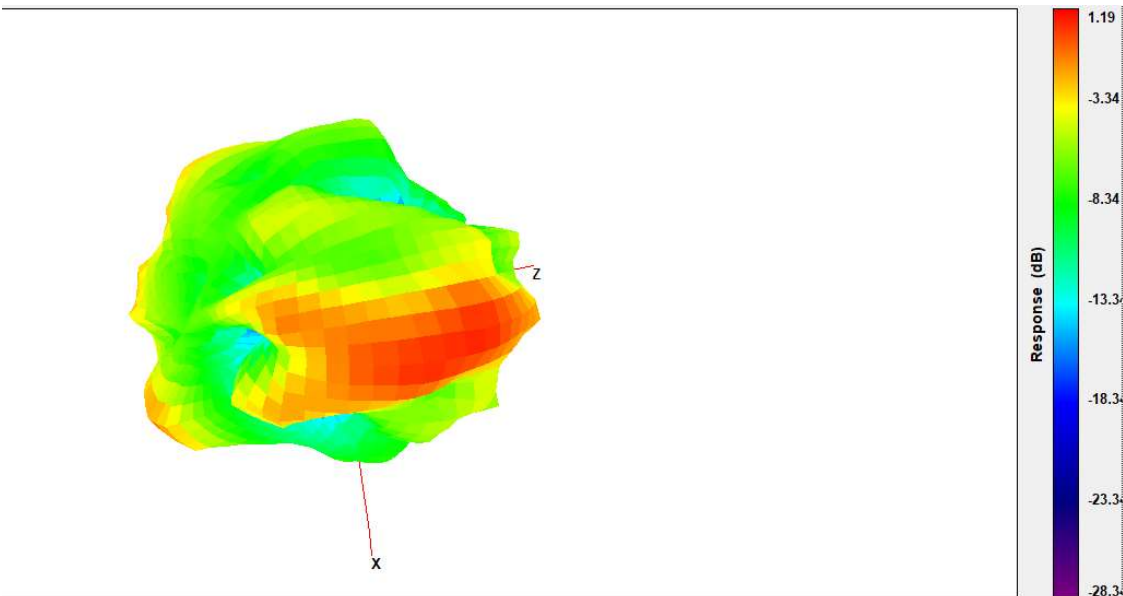
Aux Antenna 3D Radiation Pattern 5925-6425 MHz

Frequency (MHz)	Peak Gain w/ Cable Loss (dBi)
5925-6425	1.67



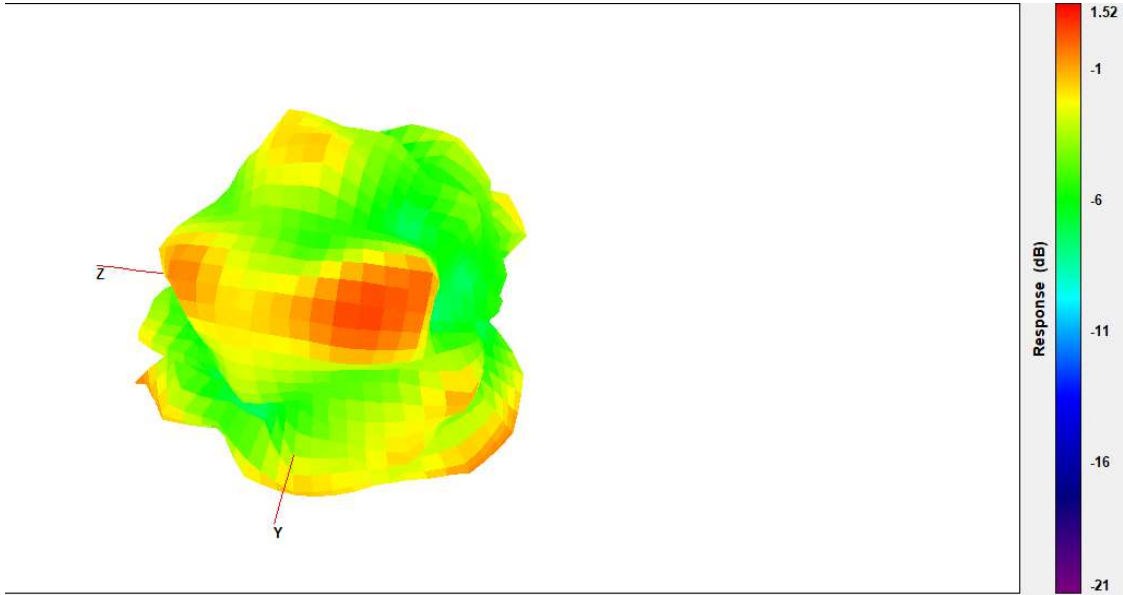
Aux Antenna 3D Radiation Pattern 6425-6525 MHz

Frequency (MHz)	Peak Gain w/ Cable Loss (dBi)
6425-6525	1.19



Aux Antenna 3D Radiation Pattern 6525-6875 MHz

Frequency (MHz)	Peak Gain w/ Cable Loss (dBi)
6525-6875	1.52



Aux Antenna 3D Radiation Pattern 6875-7125 MHz

Frequency (MHz)	Peak Gain w/ Cable Loss (dBi)
6875-7125	2.91

