

# Regulatory WLAN Antenna Information (Template)

*English Language Required for Intel Regulatory Review / Approval*

**(OEM/ODM or antenna vendor is required to complete this document with platform antenna information.**

**Remove Intel references and make this your own document)**

Platform information											
Brand	ODM	****End product model name	Intel platform (ex: Yes, No or NA)	Platform type (ex: regular NB, convertible PC, AIO...etc)	*SAR minimum separation (mm)						
Acer	Quanta	Craask_bowl	Yes	Convertible							
****Please fill in exact product model name and make sure the model name is visible on product cover or any parts for end users recognize for authority inspection.											
Antenna information											
Vendor	Type			Antenna Part number (Main)			Antenna Part number (Aux)				
WNC	PIFA			DQ6U15G7201 (81EABU15.G72)			DQ6U15G7201 (81EABU15.G72)				
Peak gain w/ cable loss (dBi)* Open Mode											
	2.4GHz 2400-2483.5 MHz	5.2GHz 5150-5250MHz	5.3GHz 5250-5350MHz	5.6GHz 5470-5725MHz	5.8GHz 5725-5850MHz	5.9GHz 5850-5895MHz	6.2GHz 5925-6425MHz	6.5GHz 6425-6525MHz	6.7GHz 6525-6875MHz	7.0 GHz 6875-7125MHz	
Main	2.86	1.43	1.14	2.07	2.08	2.08	1.70	1.58	1.58	1.99	
Aux	2.75	1.70	1.58	2.21	2.87	2.87	3.74	3.23	3.84	3.70	
Peak gain w/ cable loss (dBi)* Tablet Mode											
	2.4GHz 2400-2483.5 MHz	5.2GHz 5150-5250MHz	5.3GHz 5250-5350MHz	5.6GHz 5470-5725MHz	5.8GHz 5725-5850MHz	5.9GHz 5850-5895MHz	6.2GHz 5925-6425MHz	6.5GHz 6425-6525MHz	6.7GHz 6525-6875MHz	7.0 GHz 6875-7125MHz	
Main	1.74	0.29	0.50	1.18	2.84	2.84	3.31	1.56	1.53	1.94	
Aux	2.80	1.58	1.58	1.51	1.51	1.51	2.78	3.71	3.71	3.79	
Intel Reference Gain/Type/ Separation distance											
Antenna Type	Antenna Peak gain (In dBi)*										Distance to the end user (mm)
	2.4GHz 2400-2483.5 MHz	5.2GHz 5150-5250MHz	5.3GHz 5250-5350MHz	5.6GHz 5470-5725MHz	5.8GHz 5725-5850MHz	5.9GHz 5850-5895MHz	6.2GHz 5925-6425MHz	6.5GHz 6425-6525MHz	6.7GHz 6525-6875MHz	7.0GHz 6875-7125MHz	Generic: refer to modular FCC SAR report
Design	3.00	5.00	5.00	5.00	5.00	5.00	5.00	5.00	5.00	5.00	Mid-power: ≥ 8 mm
PIFA	3.24	3.64	3.73	4.77	4.97	4.72	4.83	4.30	5.37	5.59	Low power: ≥ 5 mm
Dipole	2.89	2.92	3.19	4.41	4.22	4.22	4.83	4.30	4.49	5.34	
Notes (marked with *)											
* SAR minimum separation (mm)											
- Regular NB: Minimum antenna-to-body (from antenna bottom to the bottom of the device)											
- Tablet / Convertible PC: Minimum antenna-to-edge (5 sides of the device)											
- Mini-tablet: Minimum antenna-to-edge (6 sides of the device)											
* 3D Peak Antenna gain should be equal or greater than -2 dBi											
- If a host integrator plans to use a lower gain antenna of the same type, additional CBP(FCC)/EDT(EU) testing need to be performed while the module is installed in the host.											

# Antenna Information

## Section 1. Antenna Assembly Specifications

Open Mode

1A Antenna Part Number	1B Manufacturer	1C Antenna Type	1D Cable Assembly Part Number and Information	Freq Range MHz	1E * Peak Gain W/ Cable loss (dBi)	1F Peak Gain w/o Cable Loss (dBi)	1G Max VSWR	1H Cable Loss (dB)
(P/N: DQ6U15G7201 81EABU15.G72) Main Antenna	WNC	PIFA	50 ohm Coaxial length: 294mm diameter: 1.13mm  I-pex MHF4L (P/N:20565-001R-13)	2400-2483.5	2.86	3.92	3	1.06
				5150-5250	1.43	2.97	3	1.54
				5250-5350	1.14	2.70	3	1.56
				5470-5725	2.07	3.68	3	1.61
				5725-5850	2.08	3.72	3	1.64
				5850-5895	2.08	3.74	3	1.66
				5925-6425	1.70	3.41	3	1.71
				6425-6525	1.58	3.35	3	1.77
				6525-6875	1.58	3.40	3	1.82
6875-7125	1.99	3.87	3	1.88				
(P/N: DQ6U15G7201 81EABU15.G72) Aux Antenna	WNC	PIFA	50 ohm Coaxial length: 465mm diameter: 1.13mm  I-pex MHF4L (P/N:20565-001R-13)	2400-2483.5	2.75	4.04	3	1.29
				5150-5250	1.70	3.60	3	1.90
				5250-5350	1.58	3.50	3	1.92
				5470-5725	2.21	4.19	3	1.98
				5725-5850	2.87	4.88	3	2.01
				5850-5895	2.87	4.90	3	2.03
				5925-6425	3.74	5.83	3	2.09
				6425-6525	3.23	5.38	3	2.15
				6525-6875	3.84	6.04	3	2.20
6875-7125	3.70	5.97	3	2.27				

- 3D Antenna Peak Gain required being test in system basis.

Tablet mode

1A Antenna Part Number	1B Manufacturer	1C Antenna Type	1D Cable Assembly Part Number and Information	Freq Range MHz	1E * Peak Gain W/ Cable loss (dBi)	1F Peak Gain w/o Cable Loss (dBi)	1G Max VSWR	1H Cable Loss (dB)
(P/N: DQ6U15G7201 81EABU15.G72) Main Antenna	WNC	PIFA	50 ohm Coaxial length: 294mm diameter: 1.13mm  I-pex MHF4L (P/N:20565-001R-13)	2400-2483.5	1.74	2.80	3	1.06
				5150-5250	0.29	1.83	3	1.54
				5250-5350	0.50	2.06	3	1.56
				5470-5725	1.18	2.79	3	1.61
				5725-5850	2.84	4.48	3	1.64
				5850-5895	2.84	4.50	3	1.66
				5925-6425	3.31	5.08	3	1.77
				6425-6525	1.56	3.38	3	1.82
				6525-6875	1.53	3.41	3	1.88
6875-7125	1.94	3.71	3	1.77				
(P/N: DQ6U15G7201 81EABU15.G72) Aux Antenna	WNC	PIFA	50 ohm Coaxial length: 465mm diameter: 1.13mm  I-pex MHF4L (P/N:20565-001R-13)	2400-2483.5	2.80	4.09	3	1.29
				5150-5250	1.58	3.48	3	1.90
				5250-5350	1.58	3.50	3	1.92
				5470-5725	1.51	3.49	3	1.98
				5725-5850	1.51	3.52	3	2.01
				5850-5895	1.51	3.54	3	2.03
				5925-6425	2.78	4.87	3	2.09
				6425-6525	3.71	5.86	3	2.15
				6525-6875	3.71	5.91	3	2.20
6875-7125	3.79	6.06	3	2.27				

- 3D Antenna Peak Gain required being test in system basis.

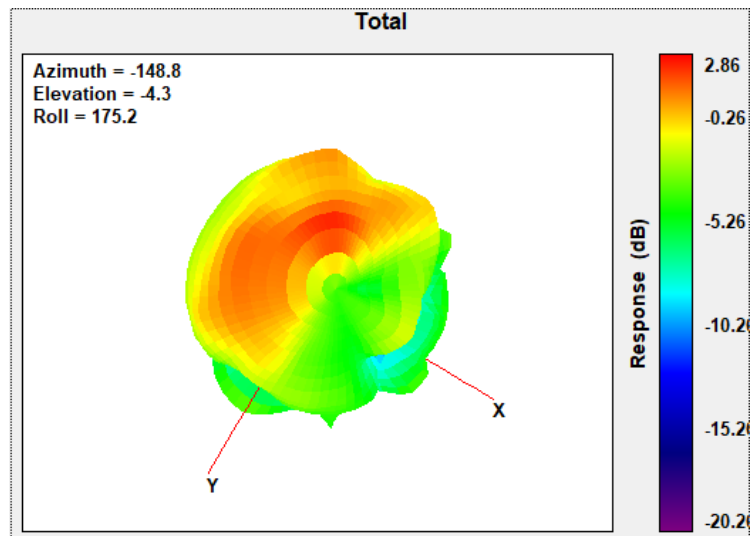
## Section 3. Radiation characteristics of antenna loaded in Host Platform

### Opne Mode

#### Main Antenna

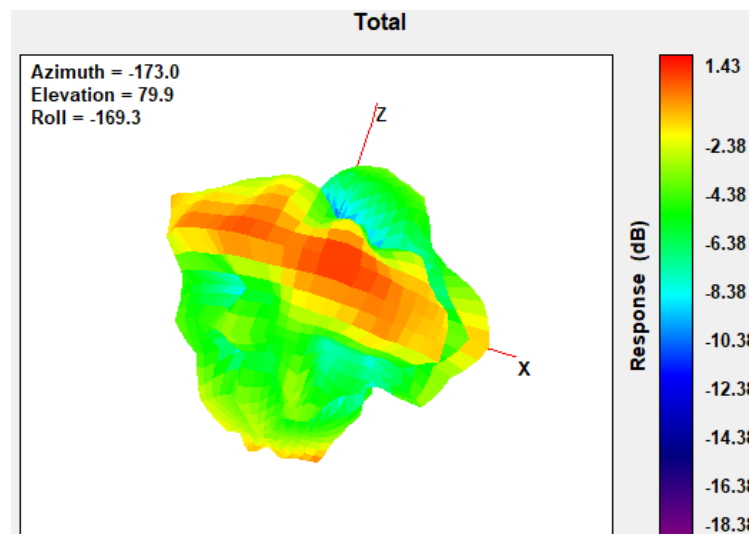
#### Max Antenna 3D Radiation Pattern 2400 – 2483.5 MHz

Frequency (MHz)	Peak Gain w/ Cable Loss (dBi)
2400-2483.5	2.86



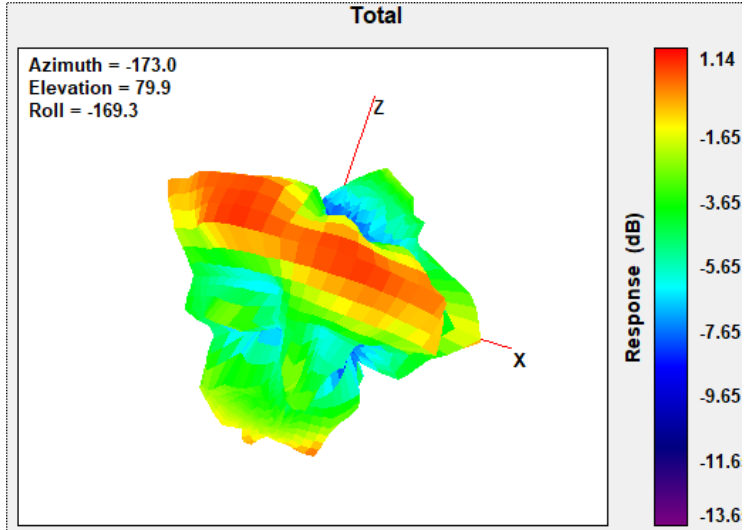
#### Max Antenna 3D Radiation Pattern 5150-5250 MHz

Frequency (MHz)	Peak Gain w/ Cable Loss (dBi)
5150-5250	1.43



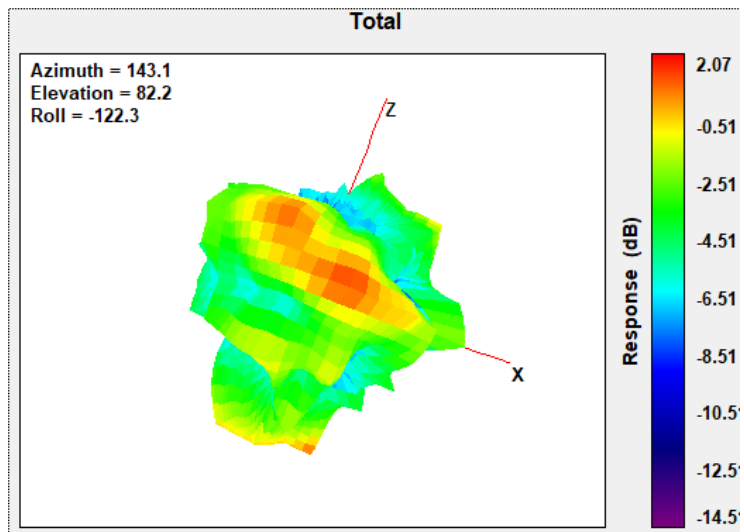
### Max Antenna 3D Radiation Pattern 5250-5350 MHz

Frequency (MHz)	Peak Gain w/ Cable Loss (dBi)
5250-5350	1.14



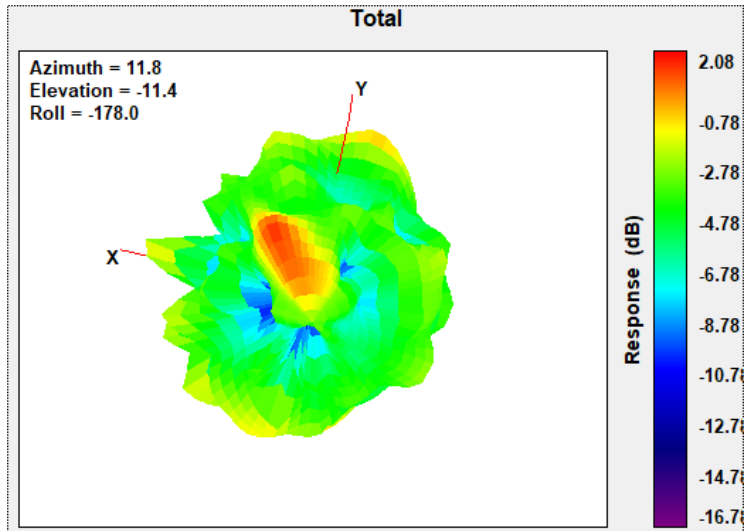
### Max Antenna 3D Radiation Pattern 5470-5725 MHz

Frequency (MHz)	Peak Gain w/ Cable Loss (dBi)
5470-5725	2.07



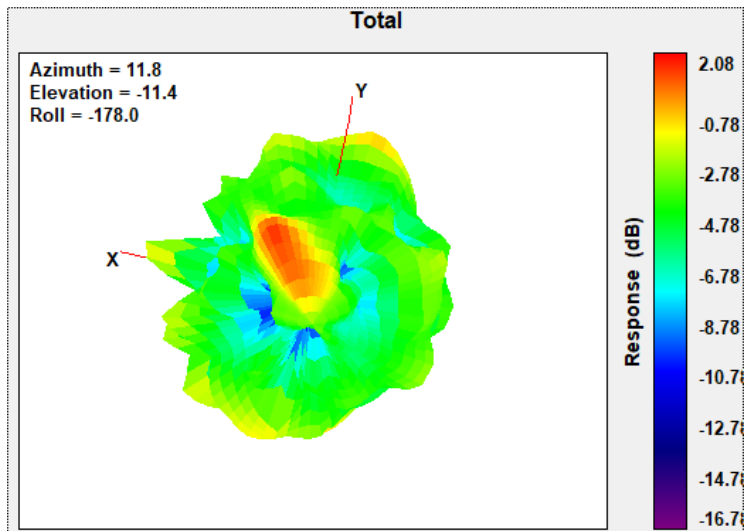
### Max Antenna 3D Radiation Pattern 5725-5850 MHz

Frequency (MHz)	Peak Gain w/ Cable Loss (dBi)
5725-5850	2.08



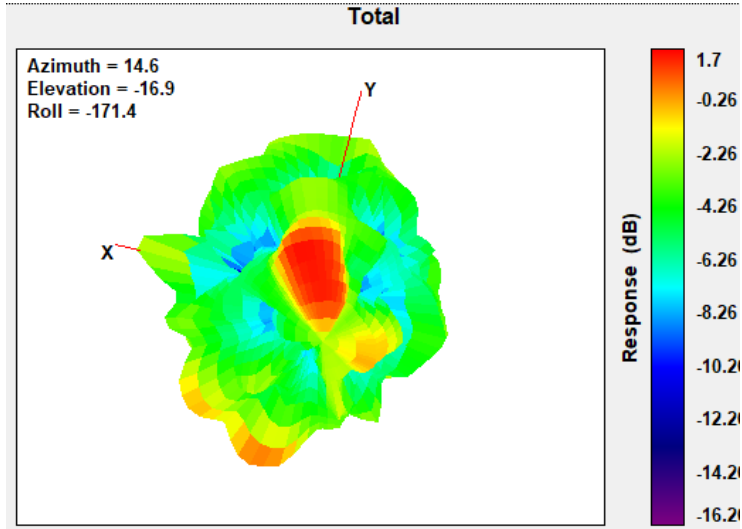
### Max Antenna 3D Radiation Pattern 5850-5895 MHz

Frequency (MHz)	Peak Gain w/ Cable Loss (dBi)
5850-5895	2.08



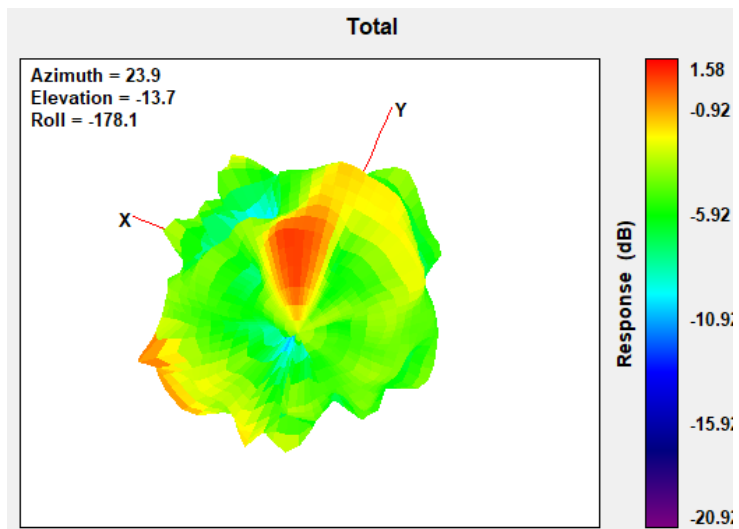
### Max Antenna 3D Radiation Pattern 5925-6425 MHz

Frequency (MHz)	Peak Gain w/ Cable Loss (dBi)
5925-6425	1.7



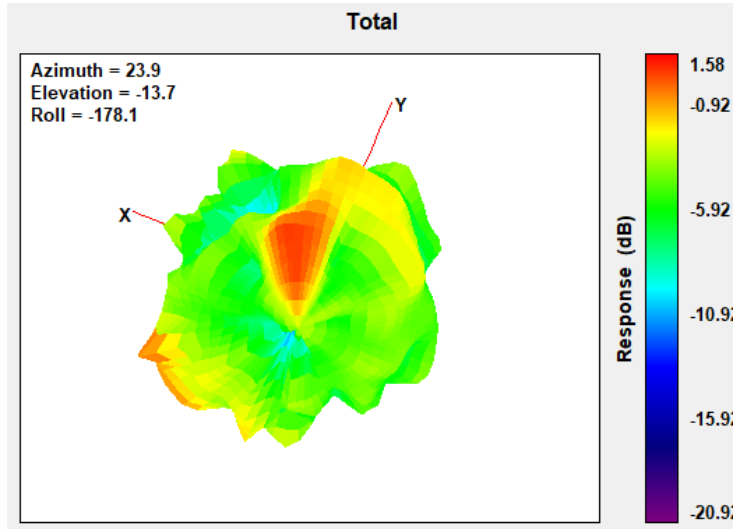
### Max Antenna 3D Radiation Pattern 6425-6525 MHz

Frequency (MHz)	Peak Gain w/ Cable Loss (dBi)
6425-6525	1.58



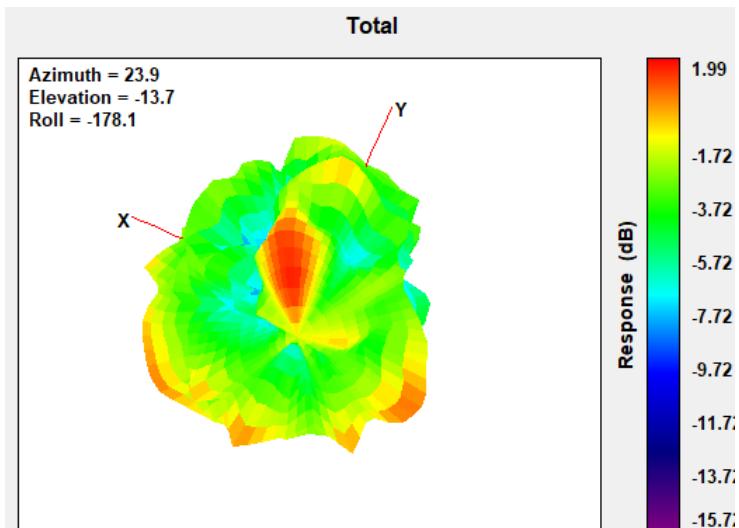
### Max Antenna 3D Radiation Pattern 6525-6875 MHz

Frequency (MHz)	Peak Gain w/ Cable Loss (dBi)
6525-6875	1.58



### Max Antenna 3D Radiation Pattern 6875-7125 MHz

Frequency (MHz)	Peak Gain w/ Cable Loss (dBi)
6875-7125	1.99

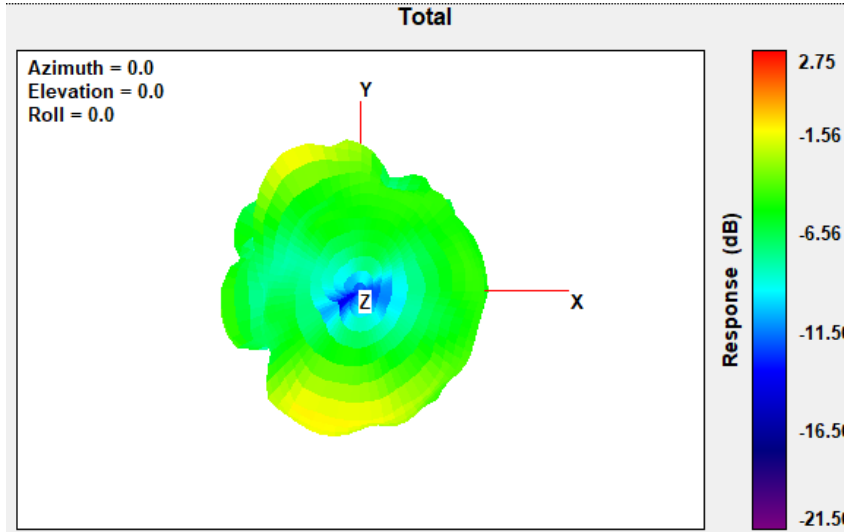




## Auxiliary Antenna

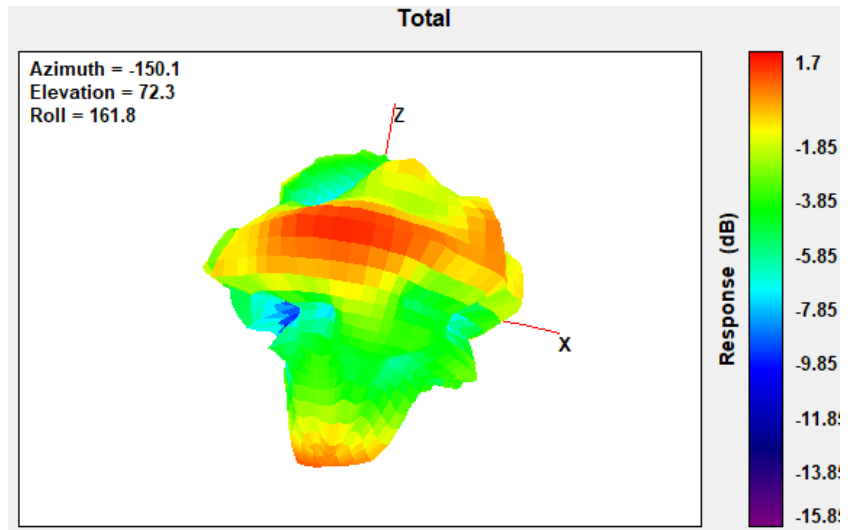
### Max Antenna 3D Radiation Pattern 2400 – 2483.5 MHz

Frequency (MHz)	Peak Gain w/ Cable Loss (dBi)
2400-2483.5	2.75



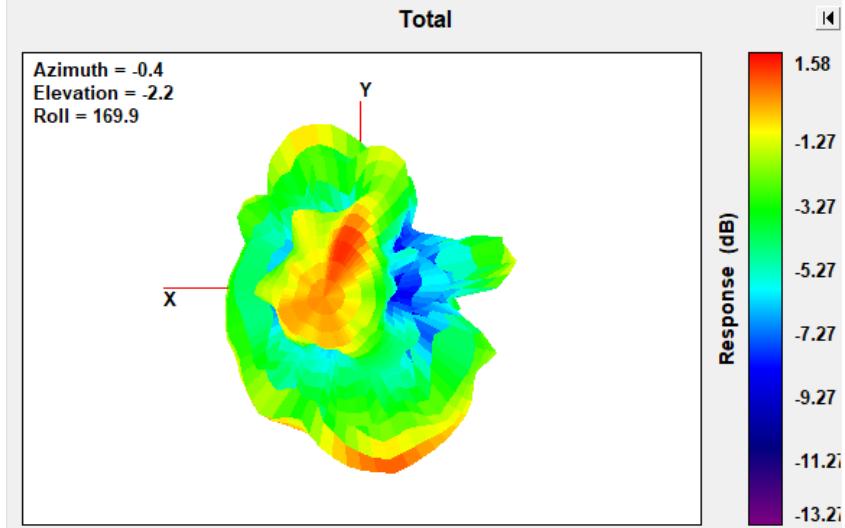
### Max Antenna 3D Radiation Pattern 5150-5250 MHz

Frequency (MHz)	Peak Gain w/ Cable Loss (dBi)
5150-5250	1.7



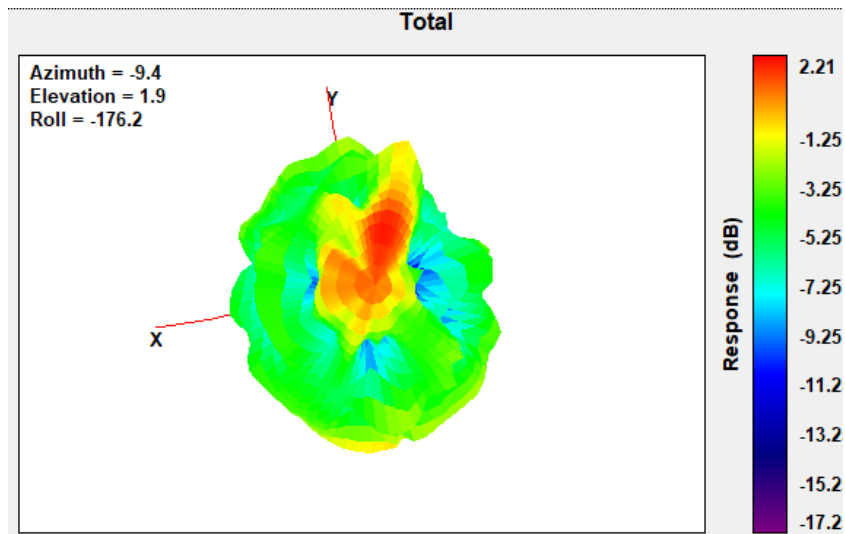
### Max Antenna 3D Radiation Pattern 5250-5350 MHz

Frequency (MHz)	Peak Gain w/ Cable Loss (dBi)
5250-5350	1.58



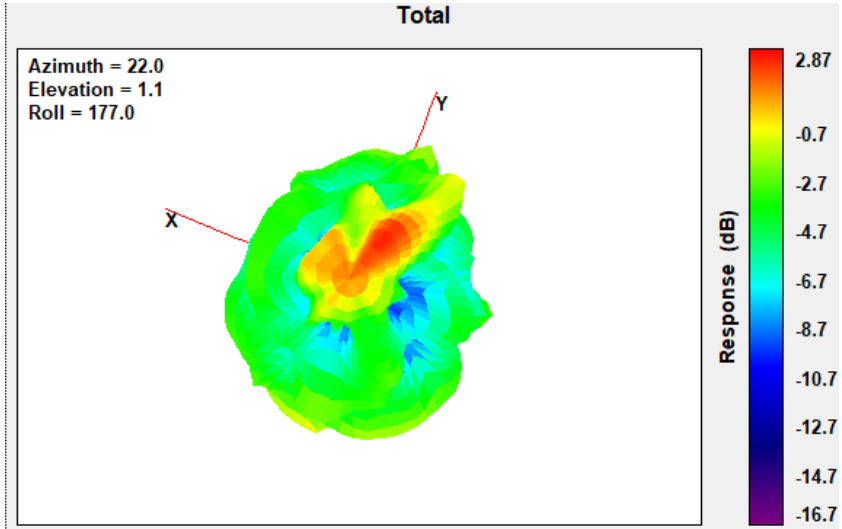
### Max Antenna 3D Radiation Pattern 5470-5725 MHz

Frequency (MHz)	Peak Gain w/ Cable Loss (dBi)
5470-5725	2.21



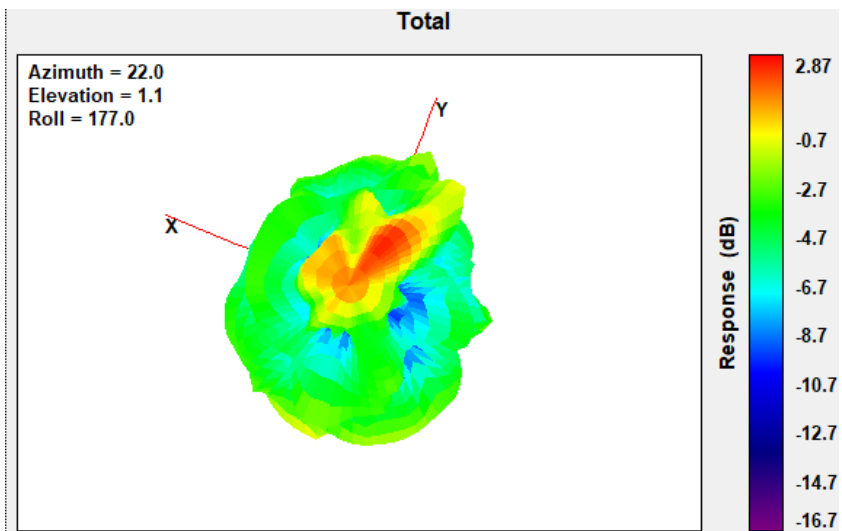
### Max Antenna 3D Radiation Pattern 5725-5850 MHz

Frequency (MHz)	Peak Gain w/ Cable Loss (dBi)
5725-5850	2.87



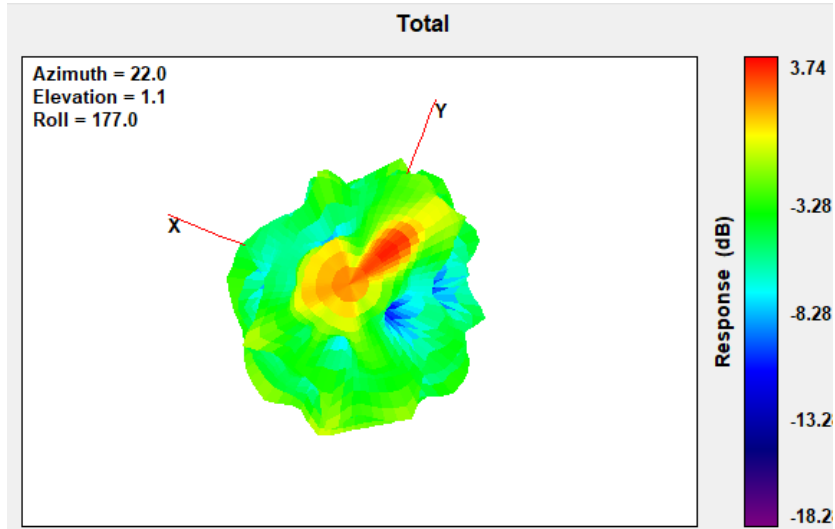
### Max Antenna 3D Radiation Pattern 5850-5895 MHz

Frequency (MHz)	Peak Gain w/ Cable Loss (dBi)
5850-5895	2.87



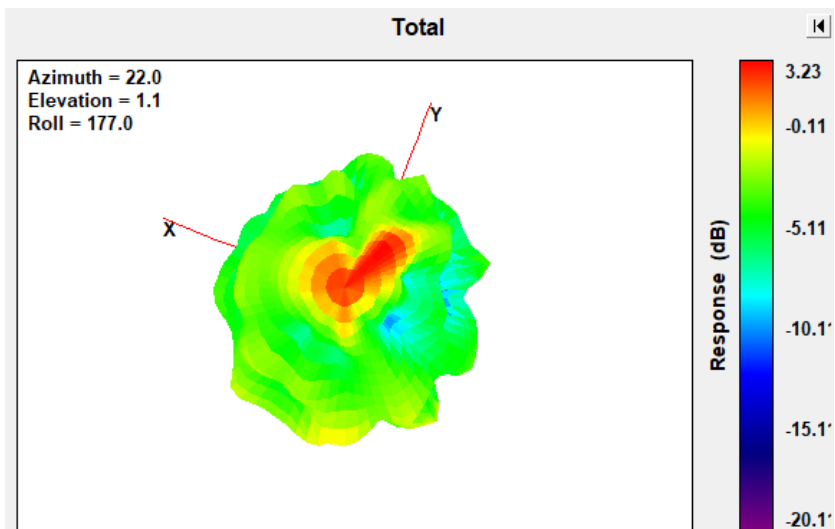
### Max Antenna 3D Radiation Pattern 5925-6425 MHz

Frequency (MHz)	Peak Gain w/ Cable Loss (dBi)
5925-6425	3.74



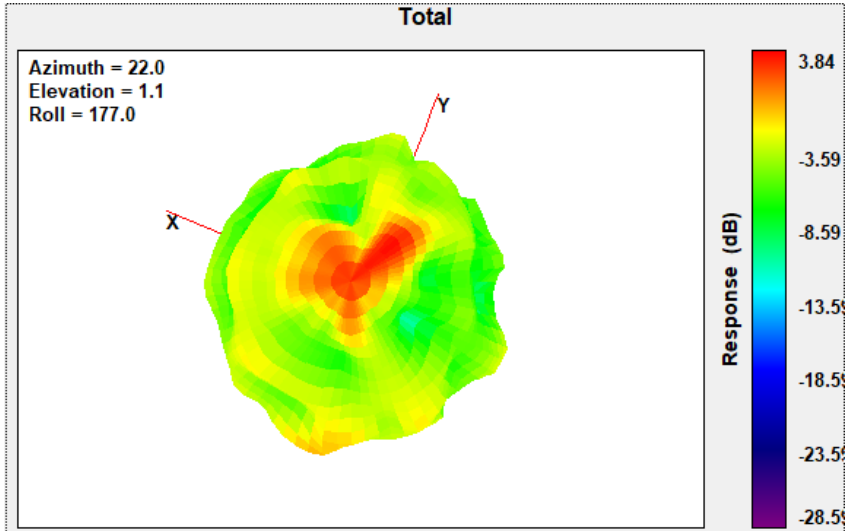
### Max Antenna 3D Radiation Pattern 6425-6525 MHz

Frequency (MHz)	Peak Gain w/ Cable Loss (dBi)
6425-6525	3.23



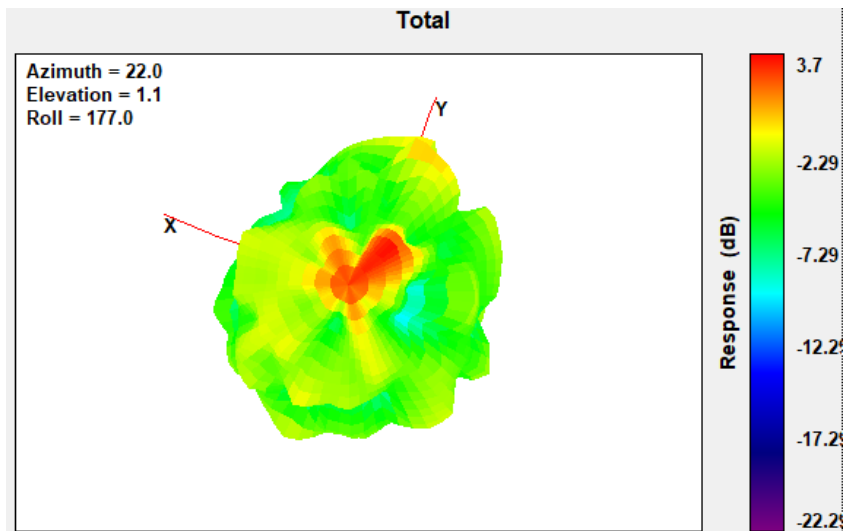
### Max Antenna 3D Radiation Pattern 6525-6875 MHz

Frequency (MHz)	Peak Gain w/ Cable Loss (dBi)
6525-6875	3.84



### Max Antenna 3D Radiation Pattern 6875-7125 MHz

Frequency (MHz)	Peak Gain w/ Cable Loss (dBi)
6875-7125	3.7

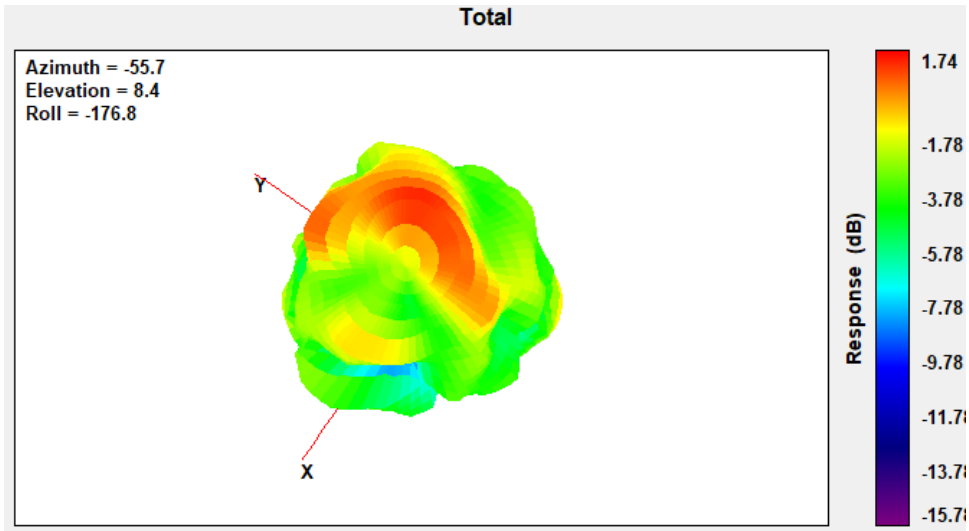


## Tablet Mode

### Main Antenna

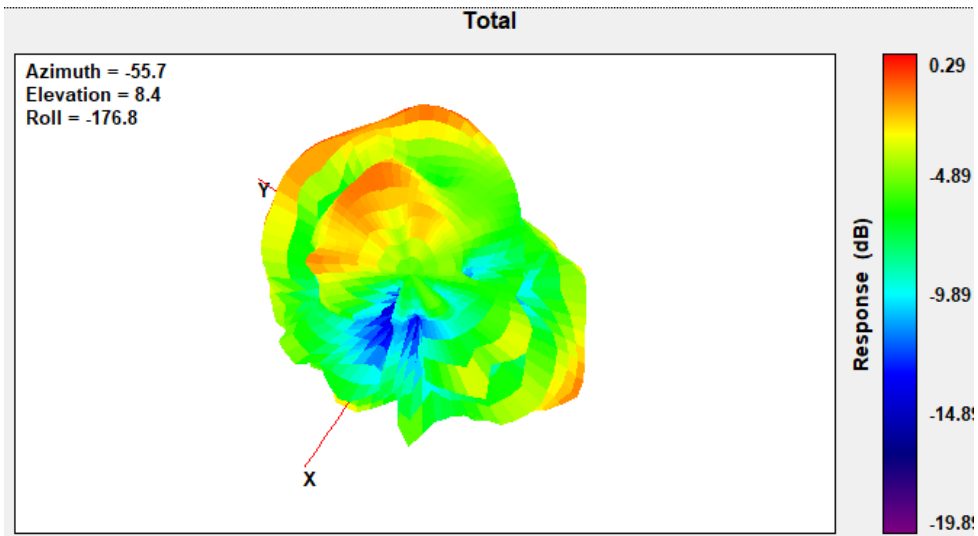
#### Max Antenna 3D Radiation Pattern 2400 – 2483.5 MHz

Frequency (MHz)	Peak Gain w/ Cable Loss (dBi)
2400-2483.5	1.74



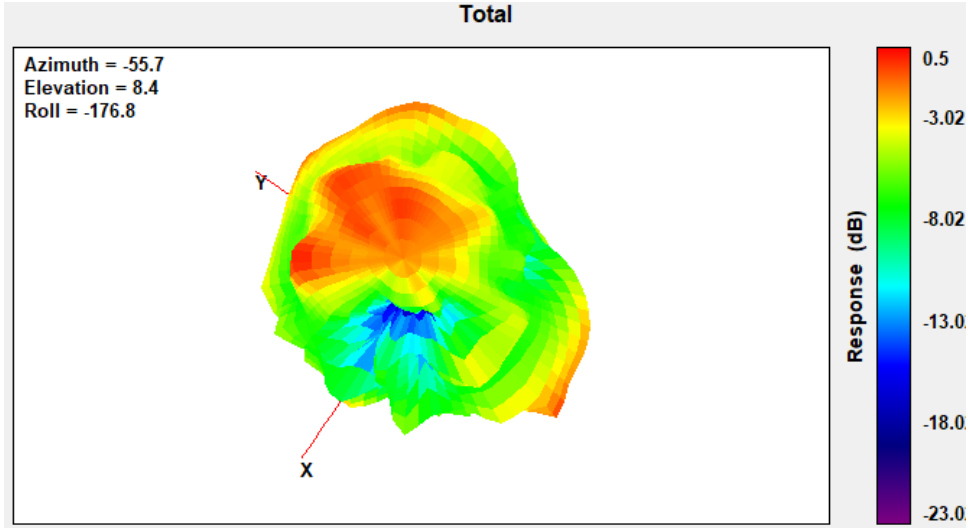
#### Max Antenna 3D Radiation Pattern 5150-5250 MHz

Frequency (MHz)	Peak Gain w/ Cable Loss (dBi)
5150-5250	0.29



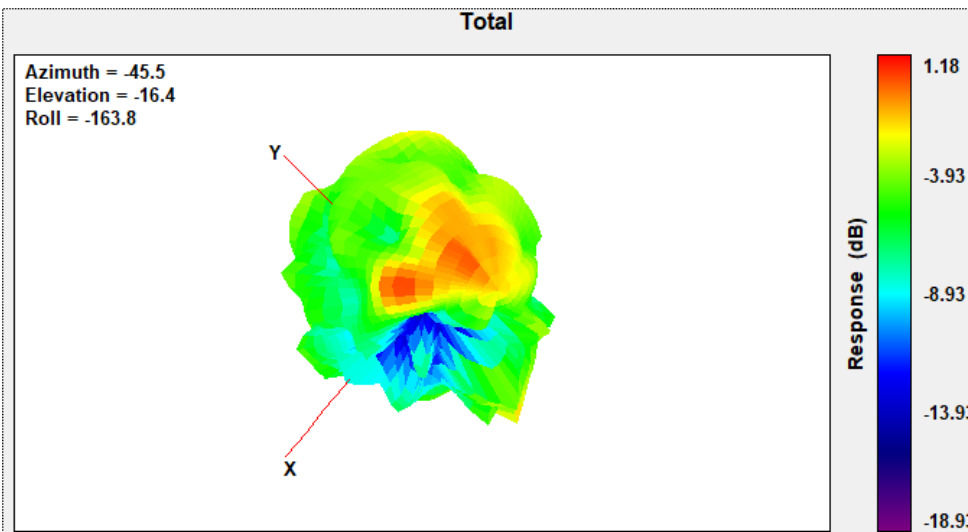
### Max Antenna 3D Radiation Pattern 5250-5350 MHz

Frequency (MHz)	Peak Gain w/ Cable Loss (dBi)
5250-5350	0.5



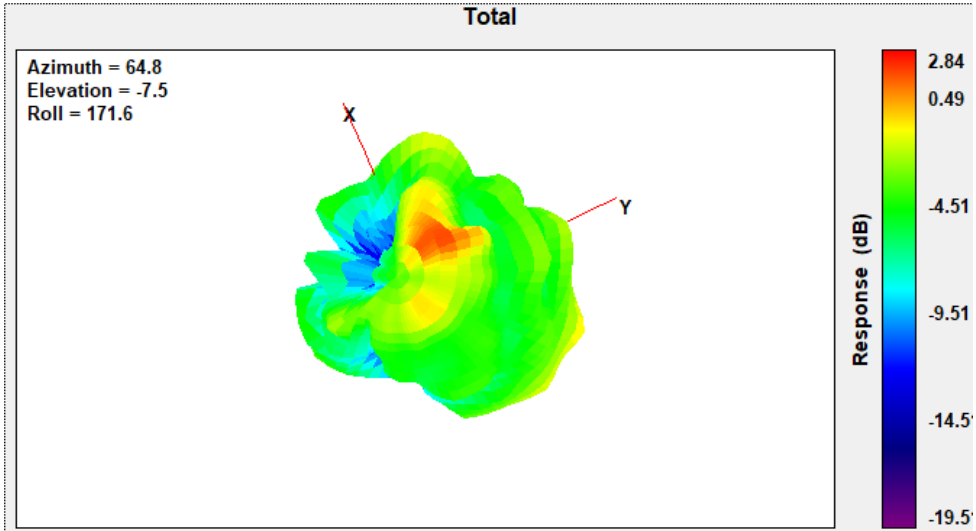
### Max Antenna 3D Radiation Pattern 5470-5725 MHz

Frequency (MHz)	Peak Gain w/ Cable Loss (dBi)
5470-5725	1.18



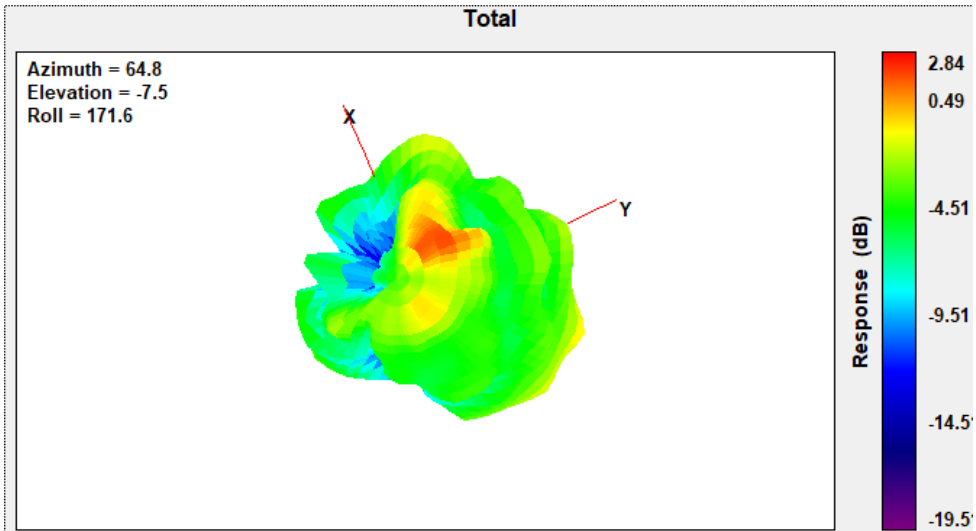
### Max Antenna 3D Radiation Pattern 5725-5850 MHz

Frequency (MHz)	Peak Gain w/ Cable Loss (dBi)
5725-5850	2.84



### Max Antenna 3D Radiation Pattern 5850-5895 MHz

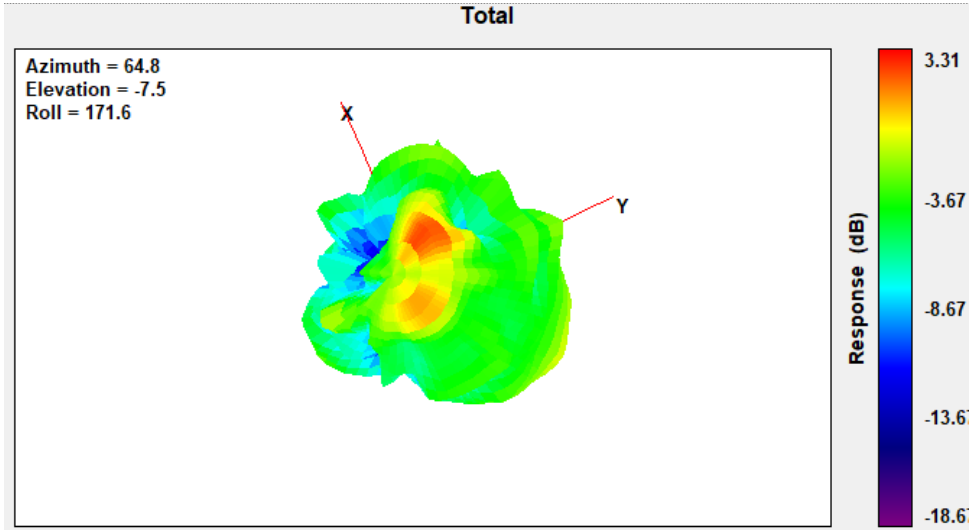
Frequency (MHz)	Peak Gain w/ Cable Loss (dBi)
5850-5895	2.84





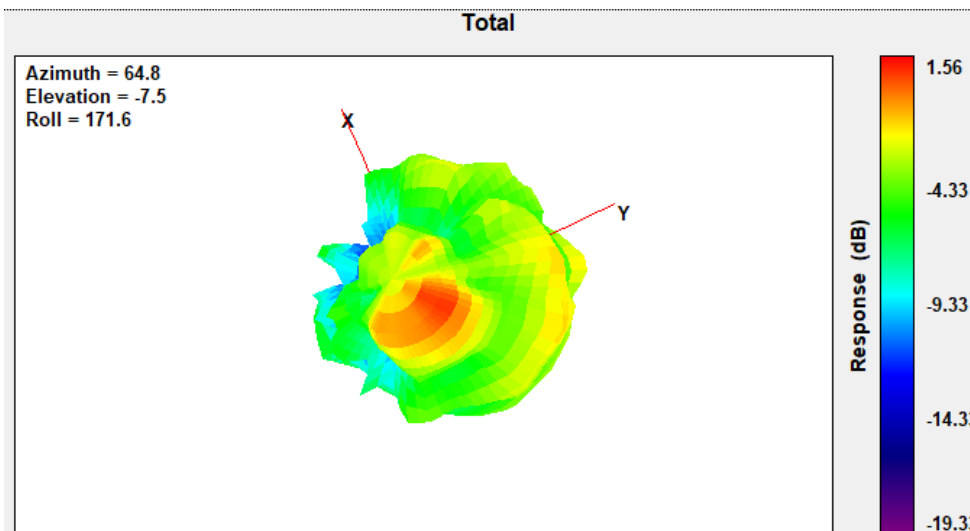
### Max Antenna 3D Radiation Pattern 5925-6425 MHz

Frequency (MHz)	Peak Gain w/ Cable Loss (dBi)
5925-6425	3.31



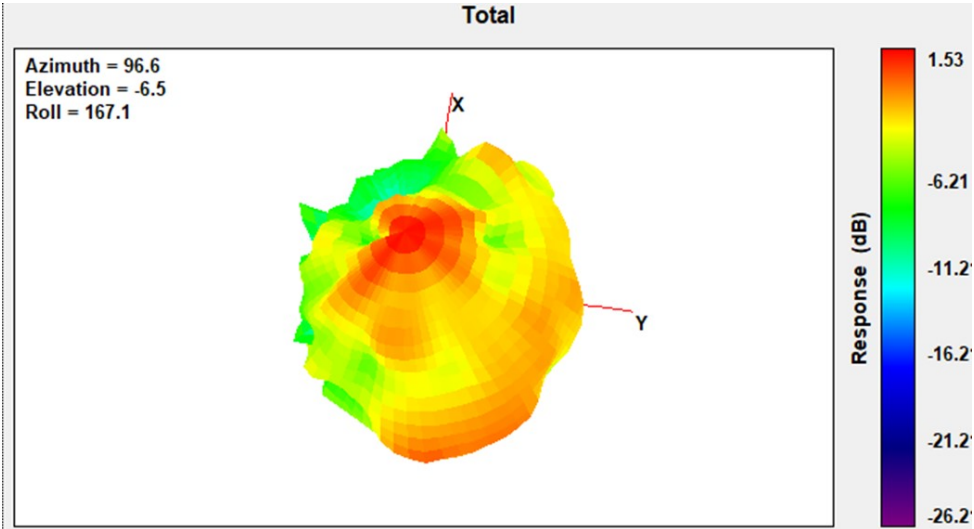
### Max Antenna 3D Radiation Pattern 6425-6525 MHz

Frequency (MHz)	Peak Gain w/ Cable Loss (dBi)
6425-6525	1.56



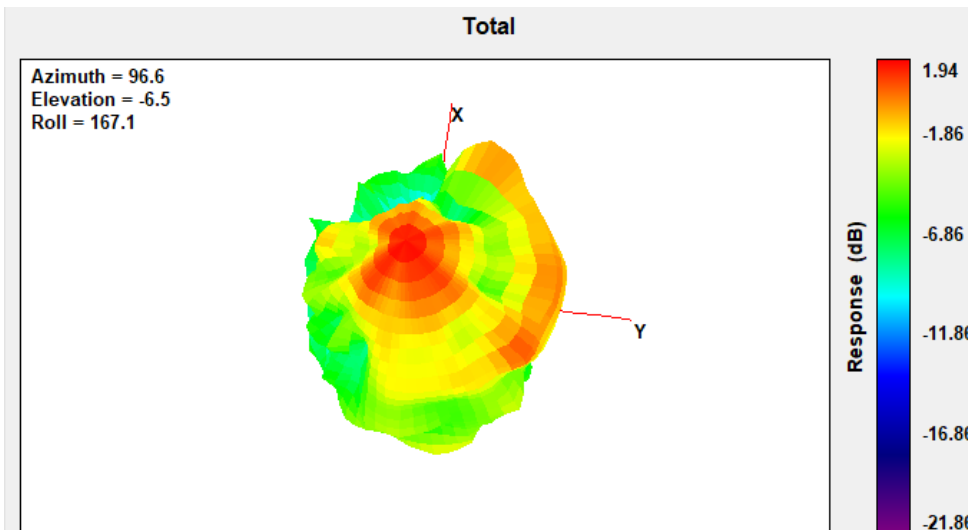
### Max Antenna 3D Radiation Pattern 6525-6875 MHz

Frequency (MHz)	Peak Gain w/ Cable Loss (dBi)
6525-6875	1.53



### Max Antenna 3D Radiation Pattern 6875-7125 MHz

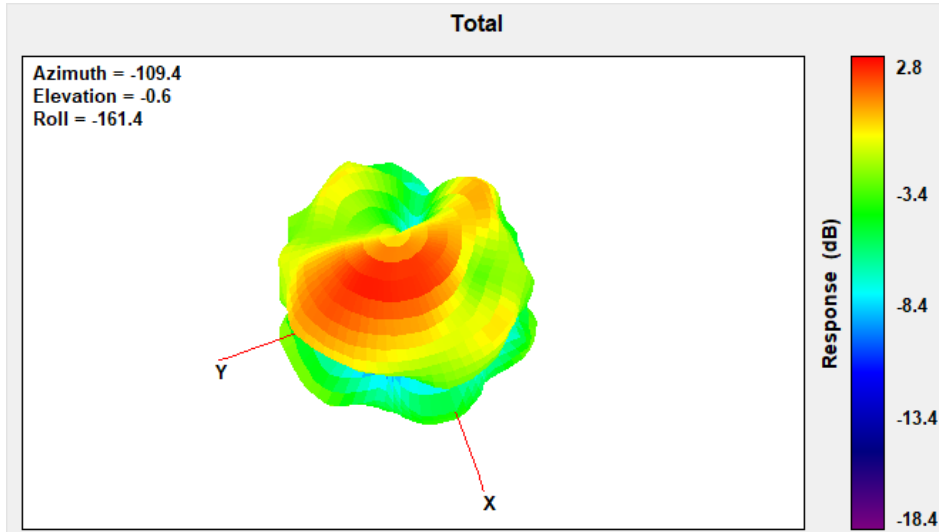
Frequency (MHz)	Peak Gain w/ Cable Loss (dBi)
6875-7125	1.94



## Auxiliary Antenna

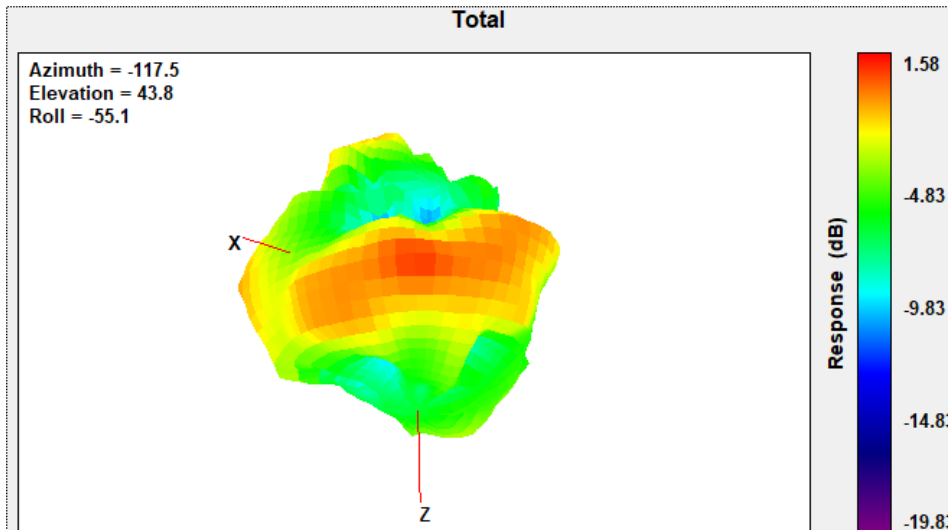
### Max Antenna 3D Radiation Pattern 2400 – 2483.5 MHz

Frequency (MHz)	Peak Gain w/ Cable Loss (dBi)
2400-2483.5	2.8



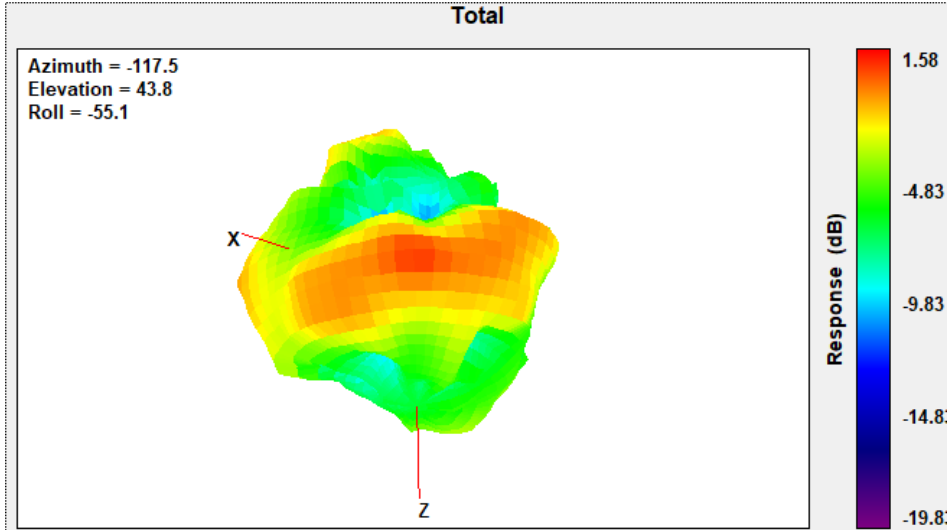
### Max Antenna 3D Radiation Pattern 5150-5250 MHz

Frequency (MHz)	Peak Gain w/ Cable Loss (dBi)
5150-5250	1.58



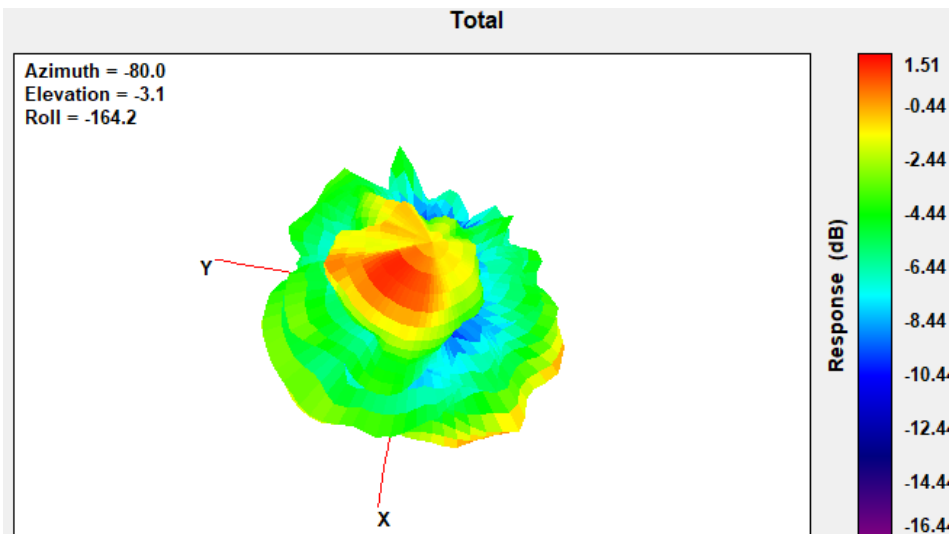
### Max Antenna 3D Radiation Pattern 5250-5350 MHz

Frequency (MHz)	Peak Gain w/ Cable Loss (dBi)
5250-5350	1.58



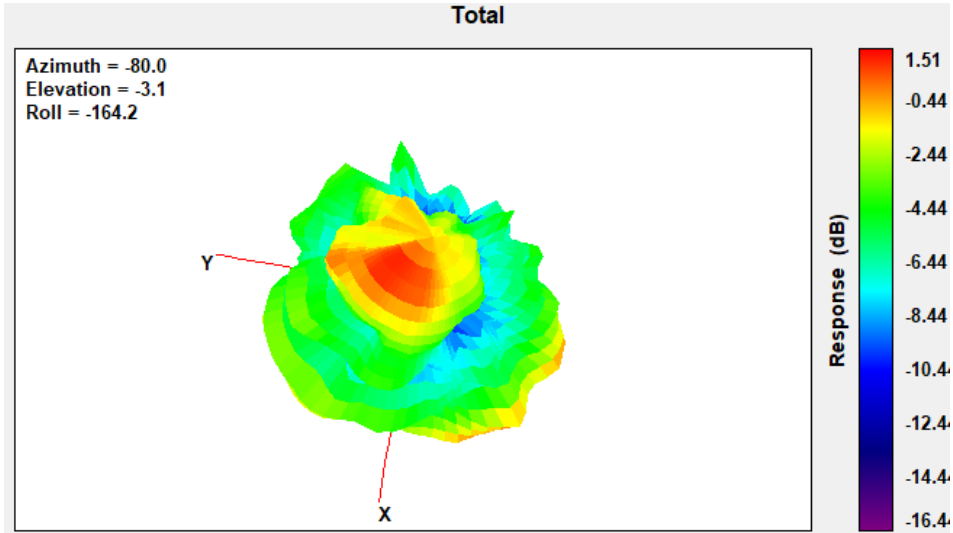
### Max Antenna 3D Radiation Pattern 5470-5725 MHz

Frequency (MHz)	Peak Gain w/ Cable Loss (dBi)
5470-5725	1.51



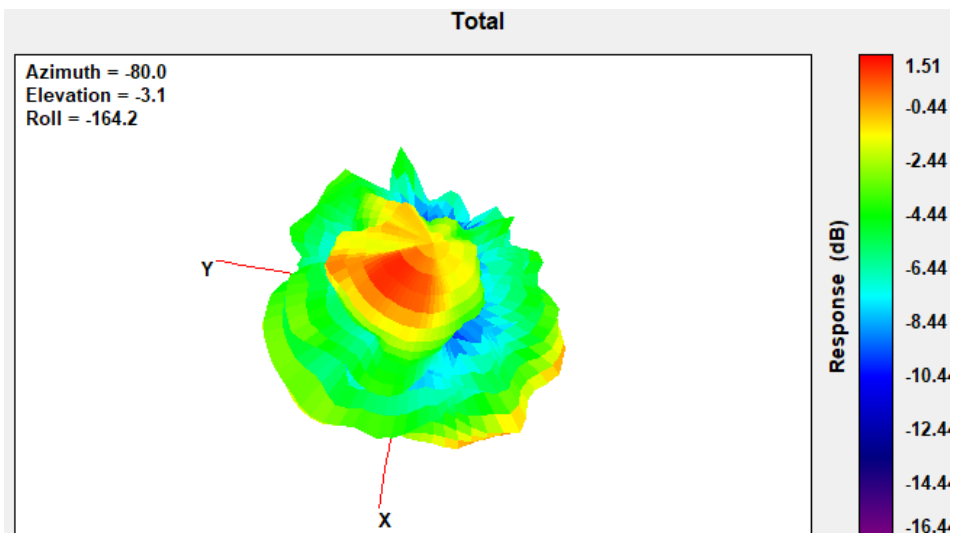
### Max Antenna 3D Radiation Pattern 5725-5850 MHz

Frequency (MHz)	Peak Gain w/ Cable Loss (dBi)
5725-5850	1.51



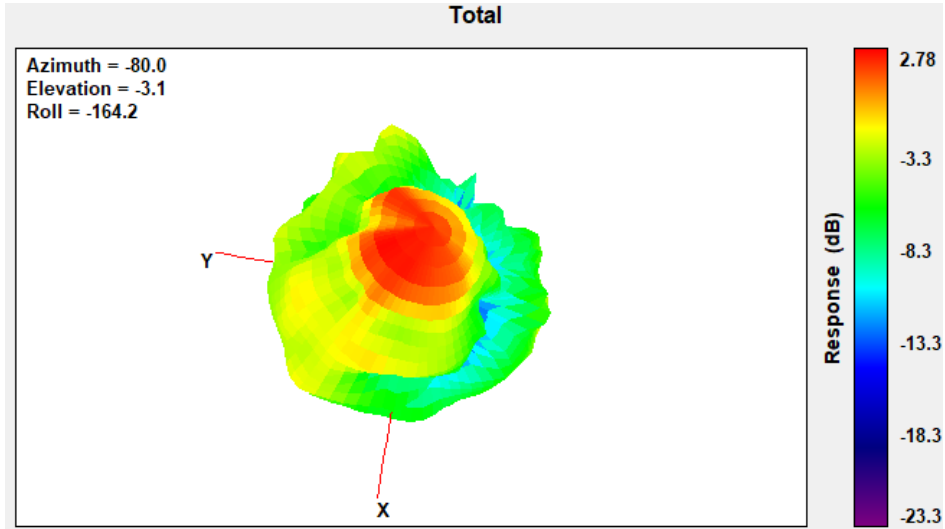
### Max Antenna 3D Radiation Pattern 5850-5895 MHz

Frequency (MHz)	Peak Gain w/ Cable Loss (dBi)
5850-5895	1.51



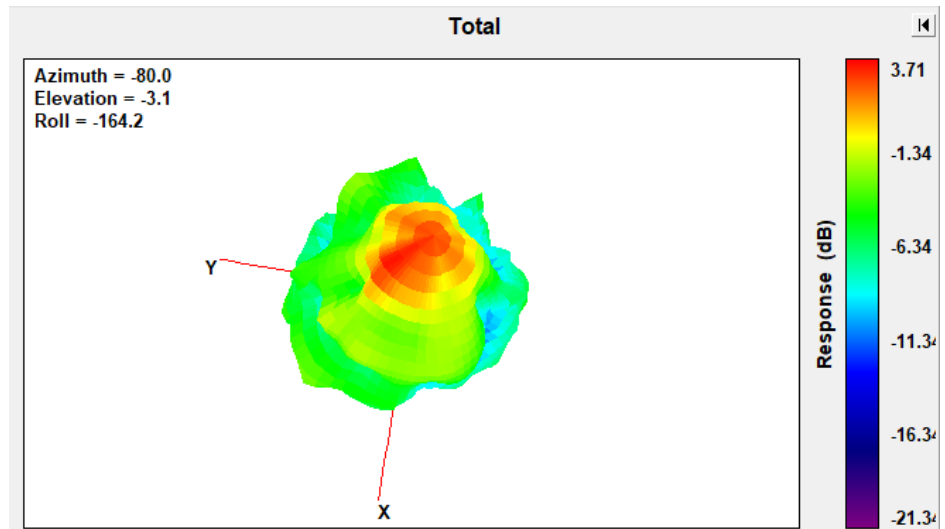
### Max Antenna 3D Radiation Pattern 5925-6425 MHz

Frequency (MHz)	Peak Gain w/ Cable Loss (dBi)
5925-6425	2.78



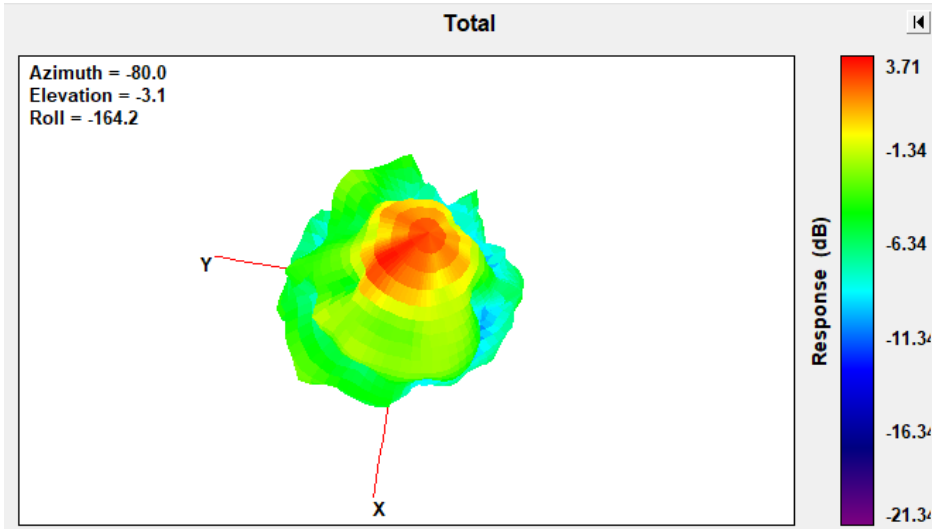
### Max Antenna 3D Radiation Pattern 6425-6525 MHz

Frequency (MHz)	Peak Gain w/ Cable Loss (dBi)
6425-6525	3.71



### Max Antenna 3D Radiation Pattern 6525-6875 MHz

Frequency (MHz)	Peak Gain w/ Cable Loss (dBi)
6525-6875	3.71



### Max Antenna 3D Radiation Pattern 6875-7125 MHz

Frequency (MHz)	Peak Gain w/ Cable Loss (dBi)
6875-7125	3.79

