

802.11b/g Adapter

Model AR5BHB63 802.11b/g Adapter

Dec 2007

Text Conventions

bold	<p>Bold type within paragraph text indicates commands, file names, directory names, paths, output, or returned values.</p> <p>Example: The DK_Client package will not function unless you use the wdreg_install batch file.</p>
<i>italic</i>	<p>Within commands, italics indicate a variable that the user must specify.</p> <p>Example: mem_alloc <i>size_in_bytes</i></p> <p>Titles of manuals or other published documents are also set in italics.</p>
Courier	<p>The Courier font indicates output or display.</p> <p>Example:</p> <pre>Error:Unable to allocate memory for transfer!</pre>
Menu	<p>The Menu character tag is used for menu items.</p> <p>Example: Choose Edit > Copy.</p>
[]	<p>Within commands, items enclosed in square brackets are optional parameters or values that the user can choose to specify or omit.</p>
{ }	<p>Within commands, items enclosed in braces are options from which the user must choose.</p>
	<p>Within commands, the vertical bar separates options.</p>
...	<p>An ellipsis indicates a repetition of the preceding parameter.</p>
>	<p>The right angle bracket separates successive menu selections.</p> <p>Example: Start > Programs > DK > wdreg_install.</p>

Notices

NOTE: This message denotes neutral or positive information that calls out important points to the text. A note provides information that may apply only in special cases.

Revision History

Revision	Description of Changes
Dec 2007	Initial Release

Contents

Introduction.....	5
System Requirements.....	5
Profile Management.....	5
Create or Modify a Configuration Profile.....	5
Remove a Configuration Profile.....	5
Auto Profile Selection Management.....	5
Switching to a Different Configuration Profile.....	5
Import and Export Profiles.....	5
Importing a Profile.....	5
Exporting a Profile.....	5
TCP/IP Configuration.....	5
Configuring the TCP/IP Address for the network device:.....	5
General Tab.....	5
Advanced Tab.....	5
Security Tab.....	5
Using EAP-TLS Security.....	5
Using EAP-TTLS Security.....	5
Using PEAP (EAP-GTC) Security.....	5
Using PEAP-MSCHAP V2 Security.....	5
Using LEAP Security.....	5
Configuring LEAP.....	5
Pre-Shared Encryption Keys.....	5
Defining pre-shared encryption keys:.....	5
Overwriting an Existing Static WEP Key.....	5
Disabling Static WEP.....	5
Using WPA Passphrase Security.....	5
Zero Configuration.....	5
Wireless Network Configuration.....	5
Check the Status Information or Diagnostics.....	5

Current Status.....	5
Adapter Information Button.....	5
Diagnostics Tab	5
Transmitted Frames.....	5
Received Frames.....	5
Scan Available Networks.....	5
Connecting to a different network.....	5
Display Settings.....	5
ACU Tools.....	5
Tray Icon.....	5
Color	5
Quality	5
RSSI*.....	5
Ad Hoc Mode	5
Ad Hoc Mode Profile Configuration.....	5
Infrastructure (Access Point) Mode.....	5
Infrastructure (Access Point) Mode Profile Configuration	5
Uninstall an Old Driver.....	5
Additional Security Features.....	5
Message Integrity Check (MIC)	5
Advanced Status Information	5
Compliance	5
Industry Canada Notice:	錯誤! 尚未定義書籤。
Avis de Conformité à la Réglementation d'Industrie Canada:...	錯誤! 尚未定義書籤。
European Community – CE Notice:	5

Introduction

The 802.11b/g Adapter supports 802.11bg operation. The card uses the Atheros Client Utility (ACU) which is a user-mode utility designed to edit and add profiles for selected Atheros network interface adapters.

System Requirements

- ◆ Laptop/ PC containing:
 - 32-bit PCI Express Bus
 - 32 MB memory or greater
 - 300 MHz processor or higher
- ◆ Microsoft Windows 2000, Windows Millennium Edition, Windows 98 Second Edition, Windows XP, or Windows NT 4.0 (with Service Pack 6)

Profile Management

Configure the wireless network adapter (wireless card) from the Profile Management tab of the Atheros Client Utility.

- | | |
|--------------------|----------------------------------|
| ◆ Add a profile | ◆ Order profiles |
| ◆ Edit a profile | ◆ Switch to a different profile |
| ◆ Import a Profile | ◆ Remove a profile |
| ◆ Export a Profile | ◆ Connect to a Different Network |

The wireless network adapter works in either [infrastructure mode](#) (which uses an access point) or [ad hoc mode](#) (a group of stations participating in the wireless LAN).

Create or Modify a Configuration Profile

To add a new configuration profile, click [New](#) on the Profile Management tab. To modify a configuration profile, select the configuration from the Profile list and click the [Modify](#) button.

The Profile Management dialog box displays the General tab. In profile management:

- ◆ Edit the General tab.
- ◆ Edit the Security tab.
- ◆ Edit the Advanced tab.

To configure a profile for ad hoc or access point (infrastructure) mode, edit the Network Type field on the Advanced tab.

Note that the ACU only allows the creation of 16 configuration profiles. After the creation of 16 profiles, clicking the [New](#) button displays an error message. Remove an old profile or modify an existing profile for a new use.

Remove a Configuration Profile

1. Go to the Profile Management tab.
2. Select the profile to remove from the list of configuration profiles.
3. Click the [Remove](#) button.

Auto Profile Selection Management

Including a profile in the auto selection feature allows the wireless adapter to automatically select that profile from the list of profiles and use it to connect to the network.

Including a profile in auto profile selection:

1. On the Profile Management tab, click the [Order Profiles](#) button.
2. The Auto Profile Selection Management window appears, with a list of all created profiles in the [Available Profiles](#) box.
3. Highlight the profiles to add to auto profile selection, then click [Add](#). The profiles appear in the [Auto Selected Profiles](#) box.

Ordering the auto selected profiles:

1. Highlight a profile in the [Auto Selected Profiles](#) box.
2. Click [Move Up](#), [Move Down](#), or [Remove](#) as appropriate. The first profile in the Auto Selected Profiles box has highest priority, and the last profile has lowest priority.
3. Click [OK](#).
4. Check the [Auto Select Profiles](#) box.
5. Save the modified configuration file.

When auto profile selection is enabled by checking [Auto Select Profiles](#) on the Profile Management tab, the adapter scans for an available network. The profile with the highest priority and the same SSID as one of the found networks is the one that is used to connect to the network. If the connection fails, the adapter tries the next highest priority profile that matches the SSID, and so on.

With auto profile selection enabled, the wireless adapter scans for available networks. The highest priority profile with the same SSID as a found network is used to connect to the network. On a failed connection, the adapter tries with the next highest priority profile.

Switching to a Different Configuration Profile

1. To switch to a different profile, go to the Profile Management tab.
2. Click on the profile name in the Profile List.
3. Click the [Activate](#) button.

The Profile List provides icons that specify the operational state for that profile. The list also provides icons that specify the signal strength for that profile.

Import and Export Profiles

Importing a Profile

1. From the Profile Management tab, click the [Import](#) button. The Import Profile window appears.
2. Browse to the directory where the profile is located.
3. Highlight the profile name.
4. Click [Open](#). The imported profile appears in the profiles list.

Exporting a Profile

1. From the Profile Management tab, highlight the profile to export.
2. Click the [Export](#) button. The Export Profile window appears.
3. Browse to the directory to export the profile to.
4. Click [Save](#). The profile is exported to the specified location.

TCP/IP Configuration

Configuring the TCP/IP Address for the network device:

1. After configuring the wireless network adapter properties, open the Control Panel and open [Network and Dial-up Connections](#).
2. Find the Local Area Connection associated with the wireless network adapter. Right-click that connection, and click [Properties](#).
3. Select [Internet Protocol \(TCP/IP\)](#) and click [Properties](#).
4. Click the radio button [Use the following IP address](#), then enter an IP address and Subnet mask. Assigning an IP address and Subnet mask allows stations to operate in access point mode (infrastructure mode) or in ad hoc mode and to have Internet access. Default gateway and DNS server information is also required. IP configuration information (DHCP to assign the IP address, gateway and DNS server IP addresses) is usually obtained from the corporate IT staff.
5. Click [OK](#) to finish.

General Tab

In the Atheros Client Utility, access the General tab by clicking [New](#) or [Modify](#) on the Profile Management tab. Edit the fields in the General tab to configure the configuration profile. Make sure to also edit the Security and Advanced tabs.

Profile Name	Identifies the configuration profile. This name must be unique. Profile names are not case sensitive.
Client Name	Identifies the client machine.
Network Names (SSIDs)	The IEEE 802.11 wireless network name. This field has a maximum limit of 32 characters. Configure up to three SSIDs (SSID1, SSID2, and SSID3).

Advanced Tab

In the Atheros Client Utility, access the Advanced tab by clicking [New](#) or [Modify](#) on the Profile Management tab, then clicking the Advanced tab in Profile Management. Edit the fields in the Advanced tab of Profile Management to configure the profile.

Transmit Power Level	Selects the transmit power level in mW. Actual transmit power may be limited by hardware.
Power Save Mode	Specify: <ul style="list-style-type: none"> ◆ Maximum mode causes the access point to buffer incoming messages for the wireless adapter. The adapter periodically polls the access point to see if any messages are waiting. ◆ Normal uses maximum when retrieving a large number of packets, then switches back to power save mode after retrieving the packets. ◆ Off turns power saving off, thus powering up the wireless adapter continuously for a short message response time.
Network Type	Specifies the network as either infrastructure or ad hoc.
802.11b Preamble	Specifies the preamble setting in 802.11b. The default setting is Short & Long (access point mode), which allows both short and long headers in the 802.11b frames. The adapter can only use short radio headers if the access point supports and uses them. Set to Long Only to override allowing short frames.
Authentication Mode	Select the mode the wireless adapter uses to authenticate to an AP: <ul style="list-style-type: none"> ◆ Auto causes the adapter to attempt authentication using shared, but switches it to open authentication if shared fails. ◆ Open enables an adapter to attempt authentication regardless of its WEP settings. It will only associate with the access point if the WEP keys on both the adapter and the access point match. ◆ Shared only allows the adapter to associate with access points that have the same WEP key.

For infrastructure (access point) networks, click the [Preferred APs](#) button to specify up to four access points to which the adapter should attempt to associate.

Security Tab

In the Atheros Client Utility, access the Security tab by clicking [New](#) or [Modify](#) on the Profile Management tab. Click the Security tab in the Profile Management window.

Edit the fields in the Security tab of Profile Management to configure the profile. To define the security mode, select the radio button of the desired security mode. Make sure to also edit the General and Advanced tabs.

<p>WPA/WPA2</p>	<p>Enables the use of Wi-Fi Protected Access (WPA). Choosing WPA/WPA2 opens the WPA/WPA2 EAP drop-down menu. The options include:</p> <ul style="list-style-type: none"> ◆ EAP-FAST ◆ EAP-TLS ◆ EAP-TTLS ◆ PEAP (EAP-GTC) ◆ PEAP (EAP-MSCHAP V2) ◆ LEAP
<p>WPA/WPA2 Passphrase</p>	<p>Enables WPA/WPA2 Passphrase security. Click on the Configure button and fill in the WPA/WPA2 Passphrase.</p>
<p>802.1x</p>	<p>Enables 802.1x security. This option requires IT administration. Choosing 802.1x opens the 802.1x EAP type drop-down menu. The options include:</p> <ul style="list-style-type: none"> ◆ EAP-FAST ◆ EAP-TLS ◆ EAP-TTLS ◆ PEAP (EAP-GTC) ◆ PEAP (EAP-MSCHAP V2) ◆ LEAP <p>If the access point that the wireless adapter is associating to has WEP set to Optional and the client has WEP enabled, make sure that Allow Association to Mixed Cells is checked on the Security Tab to allow association. Note: If the Lock checkbox is checked, you cannot change any values in this profile. See your system administrator.</p>
<p>Pre-Shared Key (Static WEP)</p>	<p>Enables the use of pre-shared keys that are defined on both the access point and the station.</p> <p>To define pre-shared encryption keys, choose the Pre-Shared Key radio button and click the Configure button to fill in the Define Pre-Shared Keys window.</p> <p>If the access point that the wireless adapter is associating to has WEP set to Optional and the client has WEP enabled, make sure that Allow Association to Mixed Cells is checked on the Security Tab to allow association.</p>
<p>None</p>	<p>No security (not recommended).</p>

Using EAP-TLS Security

To use EAP-TLS security In the Atheros Client Utility, access the Security tab in the Profile Management window.

1. On the Security tab, choose the WPA radio button.
OR: On the Security tab, choose the 802.1x radio button.
2. Choose EAP-TLS from the drop-down menu.

Enabling EAP-TLS security:

To use EAP-TLS security, the machine must already have the EAP-TLS certificates downloaded onto it. Check with the IT manager.

1. If EAP-TLS is supported, choose EAP-TLS from the drop-down menu on the right, then click the [Configure](#) button.
2. Select the appropriate certificate authority from the list. The server/domain name and the login name are filled in automatically from the certificate information. Click [OK](#).
3. Click [OK](#).
4. Activate the profile.

Using EAP-TTLS Security

To use EAP security In the Atheros Client Utility, access the Security tab in the Profile Management window.

1. On the Security tab, choose the WPA/WPA2 radio button.
OR: On the Security tab, choose the 802.1x radio button.
2. Choose EAP-TTLS from the drop-down menu.

Enabling EAP-TTLS security:

To use EAP-TTLS security, the machine must already have the EAP-TTLS certificates downloaded onto it. Check with the IT manager.

1. If EAP-TTLS is supported, choose EAP-TTLS from the drop-down menu on the right, then click the [Configure](#) button.
2. Select the appropriate certificate from the drop-down list and click [OK](#).
3. Specify a user name for EAP authentication:
 - ◆ Check [Use Windows User Name](#) to use the Windows user name as the EAP user name.
 - ◆ OR: Enter an EAP user name in the User Name field to use a separate user name and password and start the EAP authentication process.
4. Click [Advanced](#) and:
 - ◆ Leave the server name field blank for the client to accept a certificate from any server with a certificate signed by the authority listed in the Network Certificate Authority drop-down list. **(recommended)**
 - ◆ Enter the domain name of the server from which the client will accept a certificate.
 - ◆ Change the login name if needed.
5. Click [OK](#).
6. Enable the profile.

Using PEAP (EAP-GTC) Security

To use PEAP (EAP-GTC) security In the Atheros Client Utility, access the Security tab in the Profile Management window.

1. On the Security tab, choose the WPA radio button.
OR: On the Security tab, choose the 802.1x radio button.
2. Choose PEAP (EAP-GTC) from the drop-down menu.

To use PEAP (EAP-GTC) security, the server must have WPA-PEAP certificates, and the server properties must already be set. Check with the IT manager.

1. Click the [Configure](#) button.
2. To avoid the need to log on again after resuming operation (for example, after your computer goes into standby or hibernate mode), check [Always Resume the Secure Session](#).
3. Select the appropriate network certificate authority from the drop-down list.
4. Specify a user name for inner PEAP tunnel authentication:
 - ◆ Check [Use Windows User Name](#) to use the Windows user name as the PEAP user name.
 - ◆ OR: Enter a PEAP user name in the User Name field to use a separate user name and start the PEAP authentication process.
5. Choose [Token](#) or [Static Password](#), depending on the user database.
Note that Token uses a hardware token device or the Secure Computing SofToken program (version 1.3 or later) to obtain and enter a one-time password during authentication.
6. Click [Settings...](#) and:
 - ◆ Leave the server name field blank for the client to accept a certificate from any server with a certificate signed by the authority listed in the Network Certificate Authority drop-down list. **(recommended)**
 - ◆ Enter the domain name of the server from which the client will accept a certificate.
 - ◆ The login name used for PEAP tunnel authentication fills in automatically as PEAP-xxxxxxxxxxx, where xxxxxxxxxxxx is the computer's MAC address. Change the login name if needed.
7. Click [OK](#).
8. Enable the profile.

Using PEAP-MSCHAP V2 Security

To use PEAP-MSCHAP V2 security In the Atheros Client Utility, access the Security tab in the Profile Management window.

1. On the Security tab, choose the WPA radio button.
OR: On the Security tab, choose the 802.1x radio button.
2. Choose PEAP (EAP-MSCHAP V2) from the drop-down menu.

To use PEAP (EAP-MSCHAP V2) security, the server must have WPA-PEAP certificates, and the server properties must already be set. Check with the IT manager.

1. Click the [Configure](#) button.
2. Select the appropriate certificate from the drop-down list.
3. Specify a user name for inner PEAP tunnel authentication:
 - ◆ Check [Use Windows User Name](#) to use the Windows user name as the PEAP user name.
 - ◆ OR: Enter a PEAP user name in the User Name field to use a separate user name and start the PEAP authentication process.
4. Click [Advanced](#) and:
 - ◆ Leave the server name field blank for the client to accept a certificate from any server with a certificate signed by the authority listed in the Network Certificate Authority drop-down list. **(recommended)**
 - ◆ Enter the domain name of the server from which the client will accept a certificate.
 - ◆ The login name used for PEAP tunnel authentication fills in automatically as PEAP-xxxxxxxxxxx, where xxxxxxxxxxxx is the computer's MAC address. Change the login name if needed.
5. Click [OK](#).
6. Enable the profile.

Using LEAP Security

To use security In the Atheros Client Utility, access the Security tab in the Profile Management window. LEAP security requires that all infrastructure devices (e.g. access points and servers) are configured for LEAP authentication. Check with the IT manager.

Configuring LEAP

- ◆ On the Security tab, choose the WPA radio button. Choose WPA-LEAP from the drop-down menu.
 - ◆ OR: On the Security tab, choose the 802.1x radio button. Choose LEAP from the drop-down menu.
1. Click the [Configure](#) button.
 2. Specify a user name and password. Select to [Use Temporary User Name and Password](#) by choosing the radio button:
 - ◆ Check [Use Windows User Name](#) to use the Windows user name as the LEAP user name.
 - ◆ OR: Check [Manually Prompt for LEAP User Name and Password](#) to manually login and start the LEAP authentication process.

Select to [Use Saved User Name and Password](#) by choosing the radio button:

- ◆ Specify the LEAP user name, password, and domain to save and use.
3. Enter the user name and password.
 4. Confirm the password.
 5. Specify a domain name:
 - ◆ Check the [Include Windows Logon Domain with User Name](#) setting to pass the Windows login domain and user name to the RADIUS server. **(default)**
 - ◆ OR: Enter a specific domain name.
 6. If desired, check [No Network Connection Unless User Is Logged In](#) to force the wireless adapter to disassociate after logging off.
 7. Enter the LEAP authentication timeout time (between 30 and 500 seconds) to specify how long LEAP should wait before declaring authentication failed, and sending an error message. The default is 90 seconds.
 8. Click [OK](#).
 9. Enable the profile.

Pre-Shared Encryption Keys

Defining pre-shared encryption keys:

1. Click the **Pre-Shared Key (Static WEP)** radio button on the Security tab.
2. Click the **Configure** button.
3. Fill in the fields in the Define Pre-Shared Keys dialog box:

Key Entry	Determines the entry method for an encryption key: hexadecimal (0-9, A-F), or ASCII text (all keyboard characters except spaces).
Encryption Keys	Selects the default encryption keys used. Only allows the selection for a shared First, Second, Third, or Fourth key whose corresponding field has been completed.
WEP Keys (1-4)	Defines a set of shared encryption keys for network configuration security. At least one Shared Key field must be populated to enable security using a shared key. Click on the radio button to set the key as the default encryption key.
WEP Key Size	Defines the size for each encryption key. The options include: <ul style="list-style-type: none">◆ 64-bit (enter 10 digits for hexadecimal, 5 ASCII characters)◆ 128-bit (enter 26 digits for hexadecimal, 13 digits for ASCII)◆ 152-bit (enter 32 digits hexadecimal, 16 digits for ASCII)

4. Click **OK** for the changes to take effect.

Overwriting an Existing Static WEP Key

1. Click the **Pre-Shared Key** radio button on the Security tab.
2. Click on **Configure**.
3. In the window, all existing static WEP keys are displayed as asterisks for security reasons. Click in the field of the existing static WEP key to overwrite.
4. Delete the asterisks in that field.
5. Enter a new key.
6. Make sure to select the **Transmit Key** button to the left of this key is selected for the key to transmit packets.
7. Click **OK**.

Disabling Static WEP

- ◆ To disable static WEP for a particular profile, Select any other security option on the Profile Management tab to automatically disable static WEP
- ◆ OR: choose **None** on the Security tab to disable security, and click **OK** (not recommended).

Using WPA Passphrase Security

To use WPA Passphrase security In the Atheros Client Utility, access the Security tab in the Profile Management window.

1. On the Security tab, choose the WPA Passphrase radio button.
2. Click on the [Configure](#) button.
3. Fill in the WPA Passphrase.
4. Click [OK](#).

Zero Configuration

This section describes the operation of the Atheros Client Utility (ACU) and Windows XP Wireless Configuration Service (WZCS).

Wireless Network Configuration

The Windows WZCS is a service that manages the wireless connection in a largely dynamic way. Only minimal connection information must be identified and configured. To set Zero Configuration on Windows XP, take the following steps:

1. In Windows XP, open the Wireless Network Configuration Properties dialog box.
2. Select the check box "Use Windows to configure my wireless network settings" to set Zero Configuration.

When this check box is selected, Windows XP takes control of these settings for all configuration profiles:

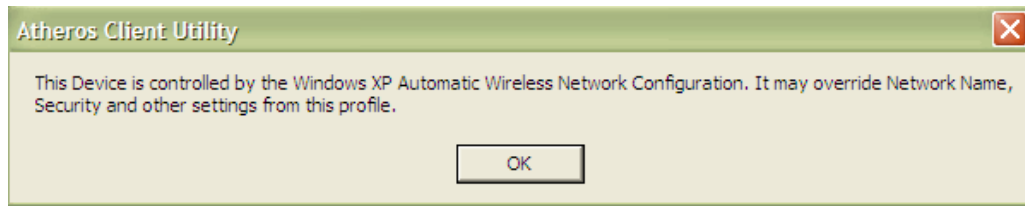
- ◆ SSID
- ◆ Security keys
- ◆ Ad hoc settings

Note that Windows XP takes control of these settings for all configuration profiles, thus users can not (create new profiles with different settings while using Windows Zero Configuration.

The Zero Configuration settings override all configuration profiles, even when you select other options. However, the ACU does still control the following settings when Zero Configuration is set:

- ◆ Power settings
- ◆ Active/Passive scanning (where applicable)
- ◆ Transmit power
- ◆ Wireless band
- ◆ Short/Long preamble (802.11b)

When Zero Configuration is in use, a pop-up message is displayed on the ACU when you attempt to create or edit a configuration profile from the Profile Management tab of the ACU.



To turn Zero Configuration off on Windows XP, take the following steps:

1. In Windows XP, open the Wireless Network Configuration Properties dialog box.
2. Clear the check box "Use Windows to configure my wireless network settings" to set Zero Configuration. When this check box is cleared, all profile settings are controlled by the configuration profile, which is set up from the ACU Profile Management tab.

Check the Status Information or Diagnostics

The Atheros client utility includes a number of tools to display current diagnostics and status information.

- ◆ Check current status
- ◆ Check driver information
- ◆ Check receive and transmit diagnostics

Current Status

The Current Status tab contains general information about the program and its operations. The Current Status tab does not require any configuration. The following table describes the items found on the Current Status screen.

Profile Name	The name of the current selected configuration profile. Set up the configuration name on the General tab.
Link Status	Shows whether the station is associated to the wireless network.
Wireless Mode	Displays the wireless mode. Configure the wireless mode on the Advanced tab.
IP Address	Displays the computer's IP address.
Network Type	The type of network the station is connected to. Options include: <ul style="list-style-type: none"> ◆ Infrastructure (access point) ◆ Ad Hoc Configure the network type on the Advanced tab.
Current Channel	Shows the currently connected channel.
Server Based Authentication	Shows whether server based authentication is used.
Data Encryption	Displays the encryption type the driver is using. Configure the encryption type on the Security tab.
Signal Strength	Shows the strength of the signal.

Click the [Advanced](#) button to see the advanced status diagnostics.

Adapter Information Button

The [Adapter Information](#) button contains general information about the network interface card (the wireless network adapter) and the network driver interface specification (NDIS) driver. Access the adapter information from the Diagnostics tab.

Card Name	Name of the wireless network adapter.
MAC Address	MAC address of the wireless network adapter.
Driver	Driver name and path of the wireless network adapter driver.
Driver Version	Version of the wireless network adapter driver.
Driver Date	Creation date of the wireless network adapter driver.
Client Name	Name of the client computer.

Diagnostics Tab

The ACU Diagnostics tab provides allows retrieval of receive and transmit statistics. The Diagnostics tab does not require any configuration. It lists these receive and transmit diagnostics for frames received by or transmitted by the wireless network adapter:

- ◆ Multicast packets transmitted and received
- ◆ Broadcast packets transmitted and received
- ◆ Unicast packets transmitted and received
- ◆ Total bytes transmitted and received

The [Adapter Information](#) button has general information about the wireless network adapter and NDIS driver. The [Advanced Statistics](#) button to shows statistics for diagnostics for frames received by or transmitted to the wireless network adapter:

Transmitted Frames

- ◆ Frames transmitted OK
- ◆ Frames retried
- ◆ Frames dropped
- ◆ No ACK frames
- ◆ ACK frames
- ◆ RTS frames
- ◆ Clear-to-send (CTS) frames
- ◆ No CTS frames
- ◆ Retried RTS frames
- ◆ Retried data frames

Received Frames

- ◆ Frames received OK
- ◆ Beacons
- ◆ Frames with errors
- ◆ CRC errors
- ◆ Encryption errors
- ◆ Duplicate frames
- ◆ AP mismatches
- ◆ Data rate mismatches
- ◆ Authentication time-out
- ◆ Authentication rejects: the number of AP authentication failures received by the wireless network adapter
- ◆ Association time-out
- ◆ Association rejects: the number of AP authentication rejects received by the wireless network adapter
- ◆ Standard MIC OK
- ◆ Standard MIC errors
- ◆ CKIP MIC OK
- ◆ CKIP MIC errors

Scan Available Networks

Click the [Scan](#) button on the Profile Management tab to scan for available infrastructure and ad hoc networks. On this list, click [Refresh](#) to refresh the list at any time.

Connecting to a different network

- ◆ Highlight a network name and click the [Activate](#) button to connect an available network. If no configuration profile exists for that network, the Profile Management window opens to the General tab. Fill in the profile name and click [OK](#) to create the configuration profile for that network.



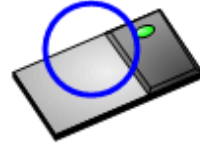
Infrastructure
(AP) Network



Connected
Infrastructure
(AP) Network



Ad Hoc
Network



Connected Ad
Hoc Network



Encryption
Active

Display Settings

To change the display settings, choose Options > Display Settings from the menu. The display settings dialog box contains tools to set the:

- Signal Strength Display Units** Sets the units used when displaying signal strength: percentage (%) or dBm.
- Refresh Interval** Use the up/down arrows to set the display refresh interval in seconds.
- Data Display** Sets the display to cumulative or relative:
- **Relative** displays the change in statistical data since the last update.
 - **Cumulative** displays statistical data collected since opening the profile.

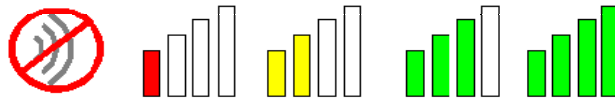
ACU Tools

Use the Action menu to access the Atheros Client Utility tools:

Enable/Disable Radio	Enable or disable the RF Signal on all Atheros station reference designs.
Enable/Disable Tray Icon	Enable or disable the tray icon.
Troubleshooting	Run the optional Troubleshooting Utility.
Manual LEAP Login	Log in to LEAP manually, if LEAP is set to manually prompt for user name and password on each login.
Reauthenticate	Reauthenticate to a LEAP-configured access point.
Exit	Exit the Atheros Client Utility application.

Tray Icon

The tray icon appears at the bottom of the screen, and shows the signal strength using colors and the received signal strength indication (RSSI).



Hold the mouse cursor over the tray icon to display the current configuration profile name and association, as well as transmit and receive speed and the wireless adapter name and IP address. Right-click on the tray icon to:

- Help** Open the online help.
- Open Atheros Client Utility** Launch the Atheros Client Utility (ACU). Use the ACU to configure a profile or view status and statistics information.
- Troubleshooting** Run the Troubleshooting Utility.
- Preferences** Set the ACU startup and menu options. Check to start the program automatically when Windows starts, and check menu items that should appear on the popup menu.
- Enable/Disable Radio** Enable or disable the RF signal.
- Manual LEAP Login** Log in to LEAP manually, if LEAP is set to manually prompt for user name and password on each login.
- Reauthenticate** Reauthenticate to the access point.
- Select Profile** Click a configuration profile name to switch to. If no configuration profile exists for a connection, add a profile.
- Show Connection Status** This window displays connection information:
 - Active Profile** Displays the active configuration profile name.
 - Auto Profile Selection** Shows whether auto profile selection is enabled.
 - Connection Status** Displays whether the adapter is connected to a wireless network.
 - Link Quality** Lists the quality of the link connection.
 - SSID** Displays the SSID of the associated network.
 - Access Point Name** Shows the name of the AP the wireless adapter is connected to.
 - Access Point IP Address** Shows the IP address of the access point the wireless adapter is connected to.
 - Link Speed** Lists the speed of the link connection.
 - Adapter IP Address** Displays the IP address of the wireless adapter.
- Exit** Exit the Atheros Client Utility application.

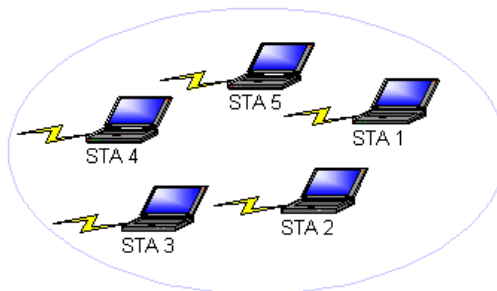
The colors are defined as follows:

Color	Quality	RSSI*
Green	Excellent	20 dB +
Green	Good	10-20 dB +
Yellow	Poor	5-10 dB
Red	Poor	< 5 dB
Gray	No Connection	No Connection

*Received signal strength indication RSSI. Displayed in dB or percentage. Enable or disable the tray icon in the Action menu.

Ad Hoc Mode

In ad hoc mode, a wireless network adapter works within an independent basic service set (IBSS), as illustrated here. All stations communicate directly with other stations without using an access point (AP).



To connect to an ad hoc network, configure the profile for ad hoc mode. *Ad Hoc operation may be limited by Hardware to meet regulatory requirements.*

Ad Hoc Mode Profile Configuration

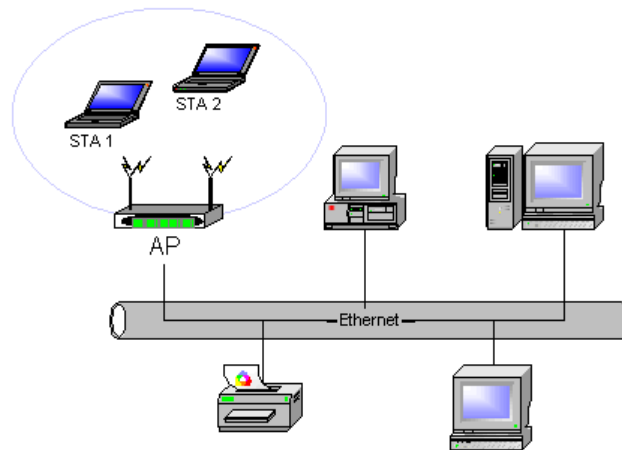
To configure a profile in ad hoc mode, change the Network Type in the Profile Management's Advanced tab. For ad hoc mode, modify the settings:

- ◆ Network Name (on General Tab)
- ◆ Transmit Power Level
- ◆ 802.11b Preamble (if using 802.11b)
- ◆ Wireless Mode When Starting an Ad Hoc Network

Make sure to also edit the General and Security tabs.

Infrastructure (Access Point) Mode

In infrastructure (access point (AP)) mode, the wireless network adapter participates in a basic service set (BSS) as a station, and communicates with the other stations through an AP, as illustrated here.



To connect to an access point network, configure the profile for access point mode.

Infrastructure (Access Point) Mode Profile Configuration

To configure a profile in infrastructure (access point) mode, change the Network Type in the Advanced tab. For access point mode, modify the settings:

- ◆ Power Save Mode
- ◆ 802.11b Preamble (if using 802.11b)
- ◆ Wireless Mode
- ◆ 802.11 Authentication Mode

Make sure to also edit the General and Security tabs.

Uninstall an Old Driver

Uninstall an old driver before upgrading to a new NDIS driver release.

To remove the newly installed driver from the system if the system does not have previously installed versions of the NDIS driver, proceed to Step 4.

1. To remove the NDIS driver from the OS, go to Device Manager, right-click [Atheros AR500x Wireless Network Adapter](#), and choose **Uninstall**.
2. Click **OK** to uninstall the device.
3. When the device is uninstalled from Device Manager, search for and delete the driver files that reside in the system.
 - a. Go to the Start menu and choose Search > For Files or Folders.
 - b. Enter **oem*.inf** in the Search for files or folders named: field, and enter **Atheros** in the **Containing text:** field.
 - c. Click **Search Now**. A few files matching these criteria are possible, if previous drivers have not been removed properly.
 - d. Choose the files that have been found and delete them from the system.
4. To complete the uninstallation, remove the file **ar5211.sys** from the folder **\WINNT\system32\drivers**.

Additional Security Features

These security features prevent attacks on a wireless network's WEP keys. The wireless adapter automatically supports each of these features, but these features must be enabled on the access point.

Message Integrity Check (MIC)

MIC prevents bit-flip attacks on encrypted packets. In a bit-flip attack, someone intercepts an encrypted message retransmits it after some alterations. Thus the receiver accepts the message as legitimate. The MIC adds some bytes to each packet to protect it against tampering.

Temporal Key Integrity Protocol (TKIP)

This feature prevents attacks on WEP in which someone catches encrypted packets and uses their initialization vector (IV) to decipher the WEP key. TKIP removes the predictability to protect both unicast and broadcast WEP keys.

Broadcast Key Rotation

EAP authentication provides dynamic unicast WEP keys for wireless adapters, but uses static broadcast keys. In broadcast WEP key rotation, the access point supplies a dynamic broadcast WEP key and changes it at intervals.

Advanced Status Information

Click the [Advanced](#) button on the Current Status tab of the Atheros Client Utility to see advanced information about the program and its operations. The Current Status tab does not require any configuration. The following table describes the items found on the Advanced Status screen.

Network Name (SSID)	Displays the wireless network name. Configure the network name on the General tab.
Server Based Authentication	Shows whether server based authentication is used.
Data Encryption	Displays the encryption type the driver is using. Configure the encryption type on the Security tab.
Authentication Type	Displays the authentication mode. Configure the authentication mode on the General tab.
Message Integrity Check	Shows whether MIC is enabled. MIC prevents bit-flip attacks on encrypted packets.
Associated AP Name	Displays the name of the access point the wireless adapter is associated to.
Associated AP IP Address	Shows the IP address of the access point the wireless adapter is associated to.
Associated AP MAC Address	Displays the MAC address of the access point the wireless adapter is associated to.
Power Save Mode	Shows the power save mode. Power management is disabled in ad hoc mode. Configure the power save mode on the Advanced tab.
Current Power Level	Displays the transmit power level rate in mW.
Current Signal Strength	Shows the current signal strength in dBm.
Current Noise Level	Displays the current noise level in dBm.
Up Time	Shows how long the client adapter has been receiving power (in hours:minutes:seconds). If the adapter runs for more than 24 hours, the display shows in days:hours:minutes:seconds.
802.11b Preamble	Displays the 802.11b preamble format. Configure the preamble format on the Advanced tab.
Current Receive Rate	Shows the current receive rate in Mbps.
Current Transmit Rate	Displays the current transmit rate in Mbps.
Channel	Shows the currently connected channel.
Frequency	Displays frequency the station is using.
Channel Set	Shows the current channel set.

Regulatory Compliance Notices

USA-Federal Communications Commission (FCC)

FCC Radio-Frequency Exposure & Approval Conditions:

FCC ID#: HLZAR5BHB63

1. Antennas must be installed to provide 20 cm separation distance from the transmitting antenna to the body of user during normal operating condition. This device must not be co-located or operating in conjunction with any other antenna or transmitter.
2. Only those antennas filed under FCC ID:HLZAR5BHB63 can be used with this device.
3. When the Minicard is installed in a system where the antenna location is less than 20 cm separation distance to the body of the user, additional equipment authorization is required.
4. The regulatory label on the final system must include the statement: " Contains FCC ID:HLZAR5BHB63 ".
5. The final system integrator must ensure there is no instruction provided in the user manual or customer documentation indicating how to install or remove the transmitter module.
6. AR5BHB63 must be installed and used in strict accordance with the manufacturer's instructions as described in the user documentation that comes with the product. This device complies with the following radio frequency and safety standards.

This equipment has been tested and found to comply with the limits for a Class B digital device, pursuant to Part 15 of FCC Rules. These limits are designed to provide reasonable protection against harmful interference in a residential installation. This equipment generates, uses, and can radiate radio frequency energy. If not installed and used in accordance with the instructions, it may cause harmful interference to radio communications. However, there is no guarantee that interference will not occur in a particular installation. If this equipment does cause harmful interference to radio or television reception, which can be determined by tuning the equipment off and on, the user is encouraged to try and correct the interference by one or more of the following measures:

-Reorient or relocate the receiving antenna

-Increase the distance between the equipment and the receiver.

-Connect the equipment to outlet on a circuit different from that to which the receiver is connected.

-Consult the dealer or an experienced radio/TV technician for help.

Any changes or modifications not expressly approved by the party responsible for compliance could void the user's authority to operate the equipment.

Caution: Exposure to Radio Frequency Radiation.

To comply with FCC RF exposure compliance requirements, a separation distance of at least 20 cm must be maintained between the antenna of this device and all persons. This device must not be co-located or operating in conjunction with any other antenna or transmitter

Canada – Industry Canada (IC)

This device complies with RSS 210 of Industry Canada.

Operation is subject to the following two conditions: (1) this device may not cause interference, and (2) this device must accept any interference, including interference that may cause undesired operation of this device.”

L' utilisation de ce dispositif est autorisée seulement aux conditions suivantes : (1) il ne doit pas produire de brouillage et (2) l' utilisateur du dispositif doit être prêt à accepter tout brouillage radioélectrique reçu, même si ce brouillage est susceptible de compromettre le fonctionnement du dispositif.

The term "IC" before the equipment certification number only signifies that the Industry Canada technical specifications were met.

To reduce potential radio interference to other users, the antenna type and its gain should be so chosen that the equivalent isotropically radiated power (EIRP) is not more than that required for successful communication.

To prevent radio interference to the licensed service, this device is intended to be operated indoors and away from windows to provide maximum shielding. Equipment (or its transmit antenna) that is installed outdoors is subject to licensing.

Pour empêcher que cet appareil cause du brouillage au service faisant l'objet d'une licence, il doit être utilisé à l'intérieur et devrait être placé loin des fenêtres afin de fournir un écran de blindage maximal. Si le matériel (ou son antenne d'émission) est installé à l'extérieur, il doit faire l'objet d'une licence.

Caution: Exposure to Radio Frequency Radiation.

The installer of this radio equipment must ensure that the antenna is located or pointed such that it does not emit RF field in excess of Health Canada limits for the general population; consult Safety Code 6, obtainable from Health Canada's website www.hc-sc.gc.ca/rpb.

European Community — CE Notice:

The CE! mark indicates compliance with the essential requirements of Directive 1999/5/EC. Such marking is indicative that this equipment meets or exceeds the following technical standards:

- ◆ EN 300 328
- ◆ EN 301 489-17
- ◆ EN 60950

Marking by the symbol: ! indicates that usage restrictions apply in countries listed on this product's packaging.

Taiwan DGT Radio Compliance:

2.4GHz Operation

低功率電波輻射性電機管理辦法

第十二條經型式認證合格之低功率射頻電機，非經許可，公司、商號或使用者均不得擅自變更頻率、加大功率或變更原設計之特性及功能。

第十四條低功率射頻電機之使用不得影響飛航安全及干擾合法通信；經發現有干擾現象時，應立即停用，並改善至無干擾時方得繼續使用。

前項合法通信，指依電信規定作業之無線電信。低功率射頻電機須忍受合法通信或工業、科學及醫療用電波輻射性電機設備之干擾。

