

## APPENDIX

### 11. Photographs of Test Setup



**Fig.1 Photograph of the SAR measurement system**

### Photograph of the Tissue Simulant Fluid Liquid Depth

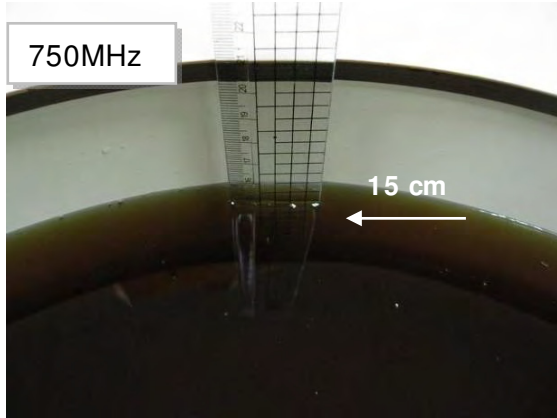


Fig.2.1

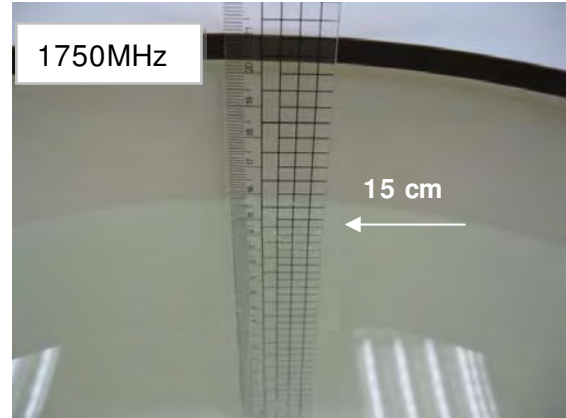


Fig.2.2

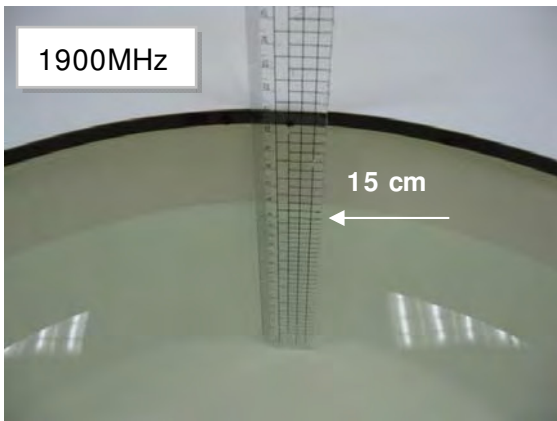


Fig.2.3

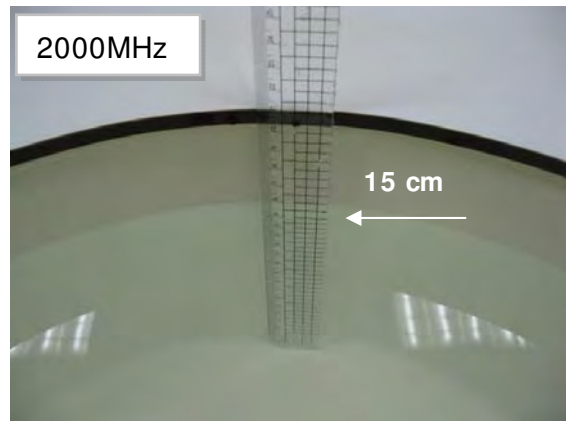


Fig.2.4

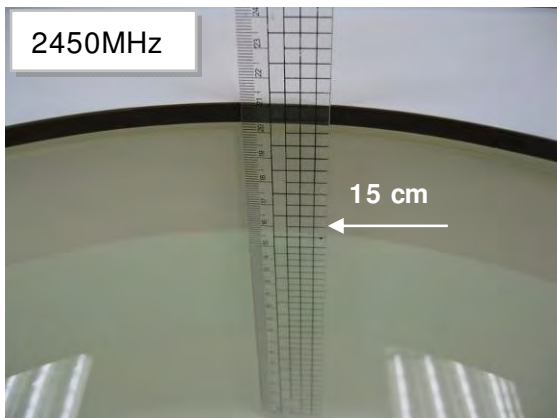


Fig.2.5

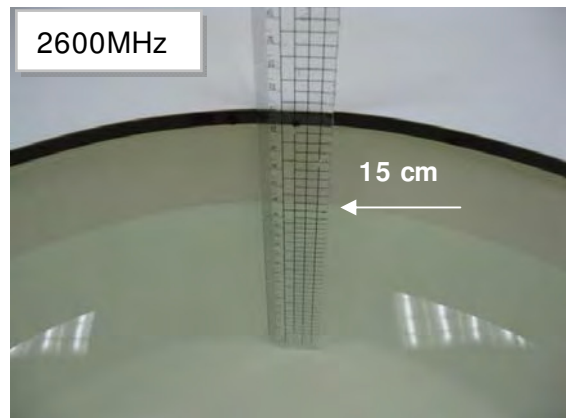
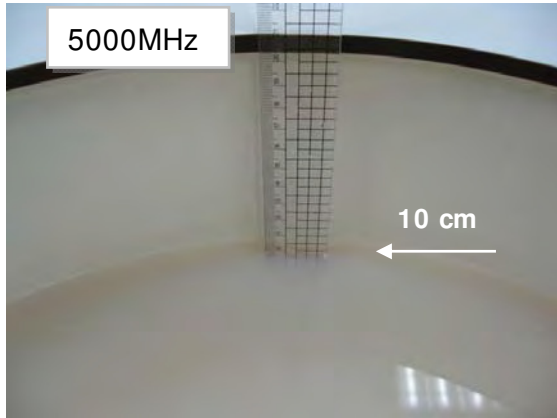


Fig.2.6

**Photograph of the Tissue Simulant Fluid Liquid Depth**



**Fig.2.7**

**Body - distance between flat phantom and EUT is 0 mm & 17mm**



**Fig.3 EUT Back side to flat phantom**

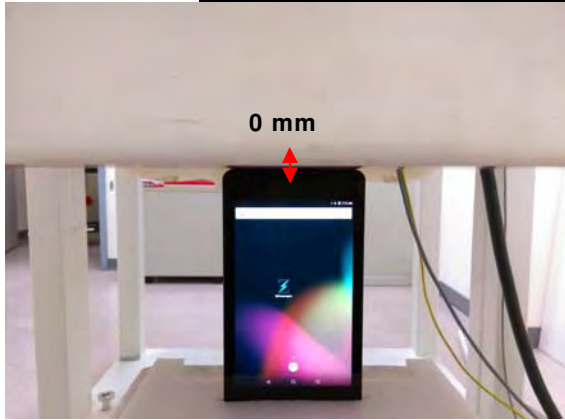


**Fig.4 EUT Back side (17mm) to flat phantom**

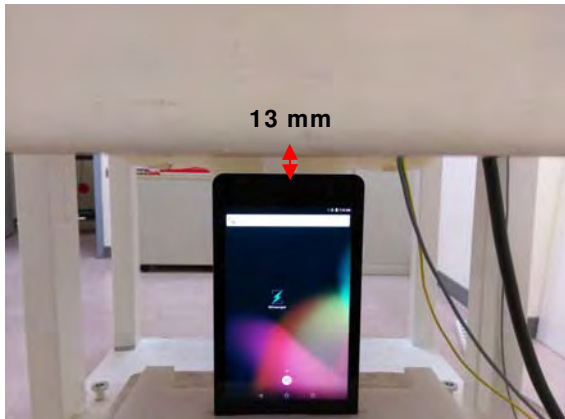


**Fig.5 EUT Right side to flat phantom**

**Body - distance between flat phantom and EUT is 0 mm & 13mm**



**Fig.6 EUT Top side to flat phantom**



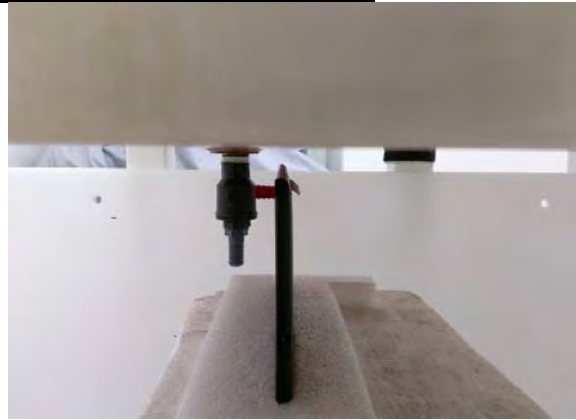
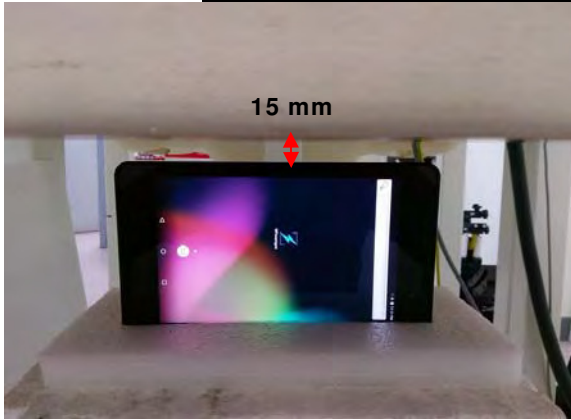
**Fig.7 EUT Top side (13mm) to flat phantom**



**Fig.8 EUT Left side to flat phantom**



**Body - distance between flat phantom and EUT is 0 mm & 15mm**



**Fig.9 EUT Left side (15mm) to flat phantom**



**Fig.10 EUT Bottom side to flat phantom**

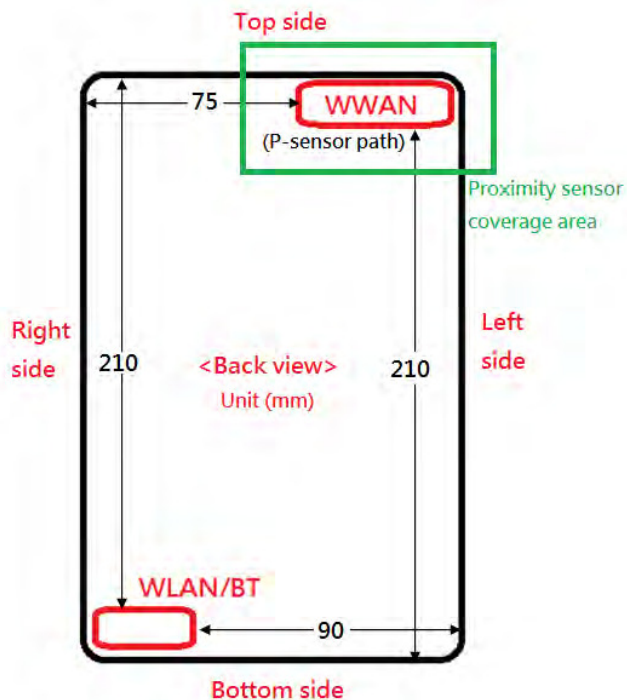
## 12. Photographs of the EUT



**Fig.11 Front view of EUT**



**Fig.12 Back view of EUT**



**Fig.13 Antenna position of EUT (Front view)**

- End of Report -