

Product Name: Tablet Computer
Brand: Acer
Model: A1412

Iconia Tab 8W Setup Guide



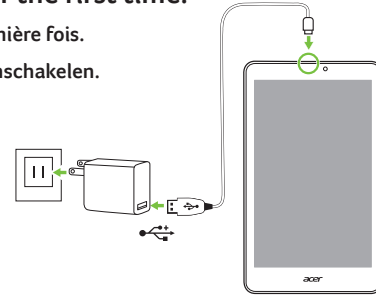
Components may vary by model.
Les composants peuvent varier en fonction du modèle.
Onderdelen kunnen per model verschillen.

Using your computer for the first time

Utiliser votre ordinateur pour la première fois /
Uw computer voor het eerst gebruiken

1 Plug in before turning on for the first time.

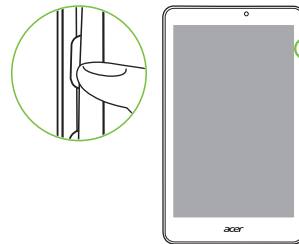
Branchez avant d'allumer pour la première fois.
Eerste gebruik: eerst aansluiten dan inschakelen.



2 Press the power button to turn the computer on.

Appuyez sur le bouton d'alimentation pour allumer l'ordinateur.

Druk op de aan/uit-knop om de computer in te schakelen.



Please make sure your tablet is plugged into an AC power supply (wall outlet) before you turn it on for the first time.
Veuillez vous assurer que votre tablette est bien branchée à une source d'alimentation secteur (prise murale) avant de l'allumer pour la première fois.
Controleer, voordat u uw tablet-PC voor de eerste keer inschakelt, of deze is aangesloten op een netstroombron (wandcontact).

3 Follow the instructions to complete setup.

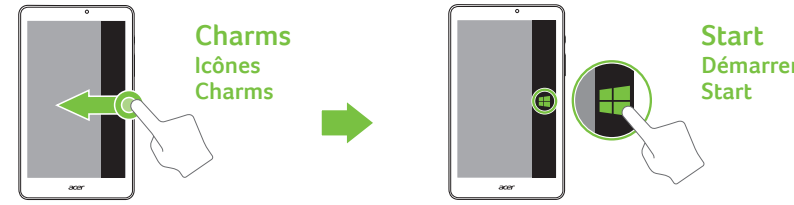
Suivez les instructions pour terminer la configuration.
Volg de aanwijzingen om de set-up te voltooien.

Getting started with Windows 8.1

Pour commencer avec Windows 8.1 / Aan de slag met Windows 8.1

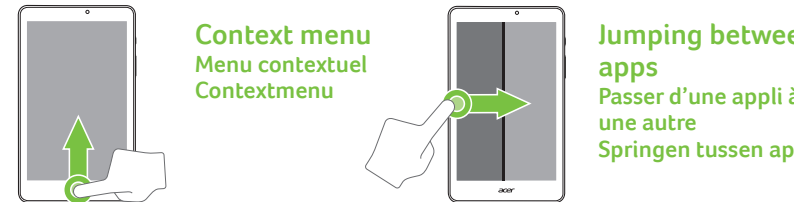
You can launch apps from the Start screen.

Vous pouvez lancer les applis depuis l'écran Démarrer.
U kunt apps openen vanaf het Startscherm.



Charms
Icônes
Charms

Start
Démarrer
Start

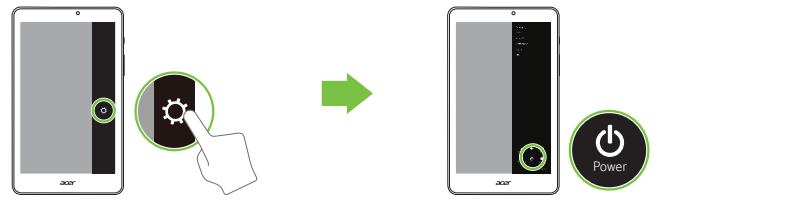


Context menu
Menu contextuel
Contextmenu

Jumping between apps
Passer d'une appli à une autre
Springen tussen apps



Close app
Fermer l'appli
App sluiten



Turn off computer
Éteindre l'ordinateur / Computer uitschakelen

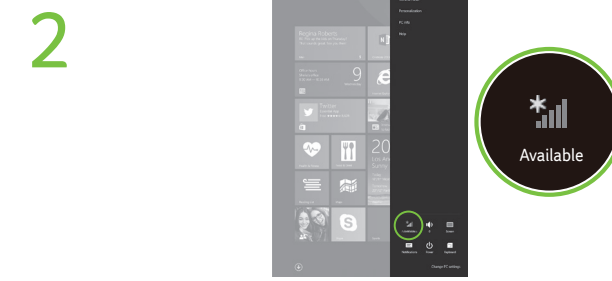
Connecting to the internet

Se connecter à Internet / Verbinding maken met het Internet



Open the Charms by swiping the right-hand edge of the screen inwards. Tap Settings.

Ouvrez la barre des Icônes en faisant glisser le bord droit de l'écran vers l'intérieur. Appuyez sur Paramètres.
Open de Charms door vanaf de rechterzijde van het scherm naar binnen te vegen. Tik op Instellingen.



Tap the Available icon to see a list of available wireless networks. Tap a Wi-Fi network to connect and enter the network security key if necessary.

Appuyez sur l'icône Disponible pour voir une liste des réseaux sans fil disponibles. Appuyez sur un réseau Wi-Fi pour vous connecter et entrez la clé de sécurité réseau si nécessaire.
Tik op het pictogram Beschikbaar voor een lijst met beschikbare draadloze netwerken. Tik op een Wi-Fi-netwerk om verbinding te maken en voer indien nodig de beveiligingsleutel van het netwerk in.

Acer Recovery Management

Acer Recovery Management allows you to create a backup on a USB drive, and to reinstall applications and drivers. You can choose to restore the system from a factory default image or reinstall applications and drivers. Follow the onscreen instructions to complete the process.

• Type "Recovery" from Start and then click on Acer Recovery Management.

User's Manual

For more on how your computer can help you to be more productive, please refer to the User's Manual. The User's Manual can be downloaded from the Acer support website by going to:

• <http://go.acer.com/?id=17883>

For information on using Windows 8.1, please refer to:

• Windows 8/8.1 tutorials: www.acer.com/windows8-tutorial

• Support FAQs: www.acer.com/support

The User's Manual contains important regulatory information for your health and safety. Please take the time to read it.

Acer Recovery Management

Acer Recovery Management permet de créer une sauvegarde sur un lecteur USB et de réinstaller les applications et les pilotes. Vous pouvez choisir de restaurer le système depuis une image par défaut de l'usine ou de réinstaller les applications et les pilotes. Suivez les instructions à l'écran pour terminer le processus.

• Saisissez « Recovery » depuis Démarrer, puis cliquez sur Acer Recovery Management.

Manuel d'utilisation

Pour plus d'information sur l'aide que votre ordinateur peut vous apporter pour être plus productif, veuillez vous reporter au Manuel d'utilisation. Le Manuel d'utilisation peut être téléchargé depuis le site Web de support Acer en allant à :

• <http://go.acer.com/?id=17883>

Pour plus d'informations sur l'utilisation de Windows 8.1, veuillez consulter :

• Tutoriels de Windows 8/8.1 : www.acer.com/windows8-tutorial

• FAQ du support : www.acer.com/support

Le Manuel d'utilisation contient des informations réglementaires importantes concernant votre santé et la sécurité.

Veuillez prendre le temps de le lire.

Acer Recovery Management

Met Acer Recovery Management kunt u een back-up op een usb-station maken en toepassingen en stuurprogramma's opnieuw installeren. U kunt het systeem herstellen via een standaard fabrieksimage of toepassingen en stuurprogramma's opnieuw installeren. Volg de aanwijzingen op het scherm om het proces te voltooien.

• Voer "Recovery" in Start in en klik dan op Acer Recovery Management.

Gebruikershandleiding

Als u meer wilt weten over hoe u met de computer productiever kunt werken, raadpleeg dan de Gebruikershandleiding. De Gebruikershandleiding downloadt u van de ondersteuningswebsite van Acer via:

• <http://go.acer.com/?id=17883>

Voor informatie over het gebruik van Windows 8.1 kijkt u in:

• Windows 8/8.1 handleidingen: www.acer.com/windows8-tutorial

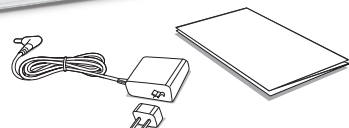
• FAQ's ter ondersteuning: www.acer.com/support

De gebruikershandleiding bevat belangrijke regelgeving over gezondheidsrisico's en veiligheid.

Neem de tijd deze te lezen.



Iconia Tab 8W Setup Guide



Komponenten können sich von Modell zu Modell unterscheiden.
I componenti possono variare in relazione al modello.
قد تختلف المكونات حسب الموديل.

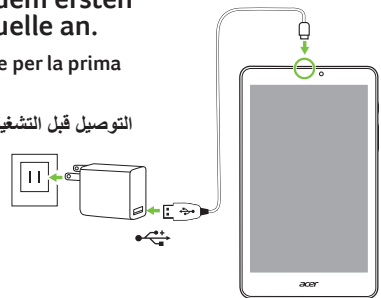
Erstmalige Verwendung des Computers

Utilizzo del computer per la prima volta / استخدام الكمبيوتر للمرة الأولى

1 Schließen Sie das Gerät vor dem ersten Einschalten an eine Stromquelle an.

Collegare alla presa prima di accendere per la prima volta.

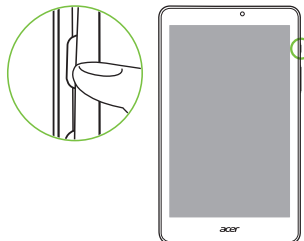
التوصيل قبل التشغيل للمرة الأولى.



2 Drücken Sie die Ein/Aus-Taste, um den Computer hochzufahren.

Premere il pulsante di accensione per accendere il computer.

اضغط على زر الطاقة لتشغيل الكمبيوتر.



Bevor Sie das Tablet zum ersten Mal einschalten, stellen Sie bitte sicher, dass es mit einer Netzquelle (Steckdose) verbunden ist.

Accertarsi che il tablet sia collegato all'alimentazione CA (presa a muro) prima di accenderlo per la prima volta.

برجاء التأكد من توصيل اللوحة الخاصة بك بمصدر طاقة تيار متردد (منفذ الحائط) قبل تشغيلها للمرة الأولى.

3 Folgen Sie den Anweisungen, um die Installation durchzuführen.

Seguire le istruzioni per completare il processo di configurazione.

اتبع التعليمات لإتمام الإعداد.

Erste Schritte mit Windows 8.1

Guida introduttiva a Windows 8.1 / Windows 8.1 مع بدء التشغيل

Sie können Apps von der Startseite ausführen.

È possibile avviare le app dalla schermata Start.

يمكنك تشغيل التطبيقات من شاشة البدء.



Charms
Accessi
Charms

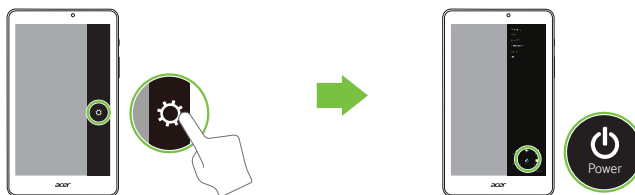
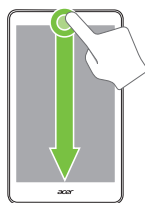
Start
بدء

Kontextmenü
Menu contesto
قائمة السياق

Wechseln
zwischen Apps
Saltare da un'app
all'altra
التنقل بين التطبيقات



App schließen
Chiudi app
إغلاق التطبيق



Computer ausschalten
Spegni il computer / إغلاق الكمبيوتر

Herstellung einer Internetverbindung

Connessione a Internet / الاتصال بالإنترنت

1



Öffnen Sie die Charms-Leiste, indem Sie vom rechten Rand des Bildschirms zur Mitte wischen. Tippen Sie auf Einstellungen.

Aprire la barra accessi scorrendo l'estremità destra dello schermo verso l'interno. Toccare Impostazioni.

افتح شريط Charms عبر الضغط على الحافة اليمنى من الشاشة نحو الداخل. إعدادات النقرة.

2



Tippen Sie auf das Symbol Verfügbar, um eine Liste mit verfügbaren WLAN-Netzwerken anzuzeigen. Tippen Sie auf ein WLAN-Netzwerk, um eine Verbindung herzustellen. Geben Sie bei Bedarf den Netzwerk-Sicherheitsschlüssel ein.

Toccare l'icona Disponibili per visualizzare un elenco delle reti wireless disponibili. Toccare una rete Wi-Fi a cui connettersi e inserire la chiave di sicurezza di rete se necessario.

اضغط على الأيقونة الظاهرة لترى قائمة الشبكات اللاسلكية المتاحة. اضغط على شبكة واي فاي لتتصل وتدخل إلى مفتاح حماية الشبكة عند الضرورة.

Acer Recovery Management

Acer Recovery Management ermöglicht Ihnen die Erstellung einer Sicherungskopie auf einem USB-Laufwerk sowie die Neuinstallation von Applikationen und Treibern. Sie können das System wahlweise von einem Standardabbild wiederherstellen oder die Applikationen und Treiber erneut installieren. Befolgen Sie die Anweisungen auf dem Bildschirm, um diesen Vorgang fertigzustellen.

• Geben Sie bei Anzeige von Start „Recovery“ ein und klicken Sie anschließend auf Acer Recovery Management.

Benutzerhandbuch

Für weitere Informationen dazu, wie Ihnen Ihr Computer helfen kann, noch produktiver zu arbeiten, lesen Sie bitte das Benutzerhandbuch. Das Benutzerhandbuch kann von der folgenden Acer Support Webseite heruntergeladen werden:

• <http://go.acer.com/?id=17883>

Weitere Informationen über die Nutzung von Windows 8.1 finden Sie unter:

• Windows 8/8.1 Anleitungen: www.acer.com/windows8-tutorial

• Support FAQs: www.acer.com/support

Das Benutzerhandbuch enthält wichtige behördliche Hinweise hinsichtlich Gesundheit und Sicherheit.

Lesen Sie diese bitte sorgfältig durch.

Acer Recovery Management

Acer Recovery Management consente di creare un backup su un'unità USB e reinstallare le applicazioni e i driver. È possibile scegliere di ripristinare il sistema da un'immagine predefinita di fabbrica o reinstallare le applicazioni e i driver. Seguire le istruzioni su schermo per completare il processo.

• Digitare "Recovery" da Start quindi fare clic su Acer Recovery Management.

Manuale dell'utente

Per altre nozioni su come il vostro computer può aiutarvi a diventare ancora più produttivi, consultate il Manuale dell'utente. Il Manuale dell'Utente può essere scaricato dal sito web di supporto Acer visitando:

• <http://go.acer.com/?id=17883>

Per ulteriori informazioni sull'uso di Windows 8.1, fare riferimento a:

• Tutorial di Windows 8/8.1: www.acer.com/windows8-tutorial

• FAQ di supporto: www.acer.com/support

Il Manuale per l'Utente contiene informazioni normative importanti per la tua salute e sicurezza.

Dedicare del tempo alla sua lettura.

Acer Recovery Management

تسمح Acer Recovery Management احتياطية على مشغل الناقل المتابعة المشترك (USB) وإعادة تثبيت التطبيقات والمشغلات. يمكنك الاختيار لاستعادة النظام من الصورة الافتراضية للمصنع أو إعادة تثبيت التطبيقات وبرامج التشغيل. اتبع التعليمات التي تظهر على الشاشة لإتمام العملية.

• اكتب "Recovery" من بدء ثم انقر فوق Acer Recovery Management.

دليل المستخدم

لمعرفة المزيد حول كيف يمكن أن يساعدك حاسوبك في أن تكون أكثر إنتاجية يرجى الرجوع إلى دليل المستخدم. يمكن تنزيل دليل المستخدم من موقع الويب التابع لدعم Acer بالانتقال إلى:

• <http://go.acer.com/?id=17883>

للحصول على معلومات عن استخدام Windows 8.1، الرجاء الرجوع إلى:

• دورات تعليمية حول Windows 8/8.1: www.acer.com/windows8-tutorial

• الأسئلة الشائعة حول الدعم: www.acer.com/support

يحتوي دليل المستخدم على معلومات تنظيمية هامة بالنسبة لصحتك وسلامتك،

يرجى بذل بعض الوقت في قراءته.

Iconia Tab 8 W

Quick Guide

Enjoy the benefits of having an Acer ID

With an Acer ID, you can:

- Build Your Own Cloud with Acer BYOC.
- Get the latest offers and product information.
- Register your device for warranty service.

How to sign up for an Acer ID

1. Ensure you are connected to the internet.
2. Open the *Acer Portal* app from the *Start* screen.
3. Install any required updates.
4. Sign up for an Acer ID or sign in if you already have an Acer ID.

Register your Acer product

You can register your product from Acer Portal directly by selecting

Also use this Acer ID to register this product.

After we receive your product registration, you will be sent a confirmation email with important data. Keep this email in a safe place.

Manage your registered products

Once you have completed the registration process, you can log onto **account.acer.com** using your Acer ID and password to see and manage all your registered products.

Note: *It may take a few days for your information to be updated to the database.*

Obtaining Acer accessories

We are happy to inform you that Acer's warranty extension program and notebook accessories are available online. Come and visit our online shop and find what you need at **store.acer.com**.

The Acer Store is being progressively rolled out, and may not yet be available in some regions. Please check regularly to see when it will be available in your country.

© 08/2014. All Rights Reserved.

Iconia Tab 8 W

Covers: W1-8101

This revision: 25 August 2014

Regulatory model number: A1412

Model number: _____

Serial number: _____

Date of purchase: _____

Place of purchase: _____

ENVIRONMENT

Temperature:

- Operating: 5 °C to 35 °C
- Non-operating: -20 °C to 65 °C

Humidity (non-condensing):

- Operating: 20% to 80%
- Non-operating: 20% to 80%

First things first

We would like to thank you for making an Acer tablet your choice for meeting your mobile computing needs.

Your guides

To help you use your Acer computer, we have designed a set of guides:

First off, the **Setup Guide** helps you get started with setting up your computer.

The **Quick Guide** introduces you to the basic features and functions of your new computer.

For more on how your computer can help you to be more productive, please refer to the **Iconia Tab 8 W User's Manual**. The **Iconia Tab 8 W User's Manual** contains useful information applying to your new computer. It covers basic topics such as using the keyboard and audio, etc.

This guide contains detailed information on such subjects as system utilities, data recovery, expansion options and troubleshooting. In addition it contains warranty information and the general regulations and safety notices for your computer.

The User's Manual can be downloaded from the Acer support website by going to: <http://go.acer.com/?id=17883>

Software installation

The first time you turn on your computer, it will automatically install software and set up for use. This may take some time, please do not turn off your computer; wait until the installation has finished.

Recovery

You should create recovery backups as soon as you can. The *Acer Recovery Management* program allows you to create recovery backups and then to restore or reinstall applications and drivers provided by Acer.

Having trouble?

Acer provides several options to support your purchase.

Acer support

Make sure you write down your computer serial number, date and place of purchase and model name on the area provided in this guide; save your proof of purchase. Before you call us, please write down any error message that accompanies the problem, and have the computer in front of you and switched on if possible. Having these items in hand when contacting us will ensure better and quicker service.

Acer website

Remember to visit **www.acer.com** and refer to the support section for up-to-date information, help, drivers and downloads.

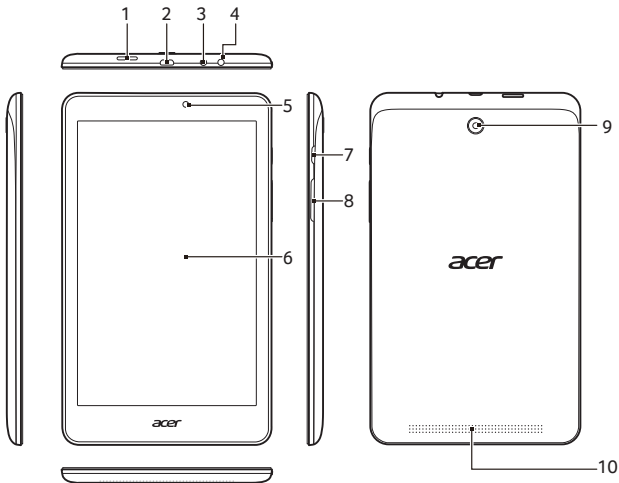
Warranty and contact information

You can find information about the warranty for your computer and how to contact technical support in your computer's warranty.

Your Acer tablet PC tour

After setting up your device as illustrated in the Setup Guide, let us show you around your new Acer computer. You can enter information into your new computer via the touchscreen.

Views



No.	Item	Description
1	MicroSD card slot	Insert a microSD card into this slot.
2	Micro USB connector	Connects to USB devices. A micro USB to USB adapter is needed to connect to USB devices.
3	Headset/speaker jack	Connects to audio devices (e.g., speakers, headphones) or a headset with microphone.
4	Microphone	Internal microphone for sound recording.
5	Front-facing camera	2-megapixel camera for video communication.
6	Touchscreen	8-inch IPS HD 800 x 1280 resolution display
7	Power button	Press to turn the computer on; press again to place the computer in Sleep mode. Press and hold to turn the computer off.
8	Volume control key	Adjusts the system volume.
9	Camera	2-megapixel camera for video communication.
10	Speaker	Delivers stereo audio output.

Here is the CS-03 warning:

IC CS-03 Notice

The Industry Canada label identifies certified equipment. This certification means that the equipment meets certain telecommunications network protective, operational and safety requirements as prescribed in the appropriate Terminal Equipment Technical Requirements document(s). The Department does not guarantee the equipment will operate to the user's satisfaction.

Before installing this equipment, users should ensure that it is permissible to be connected to the facilities of the local telecommunications company. The equipment must also be installed using an acceptable method of connection. The customer should be aware that compliance with the above conditions may not prevent degradation of service in some situations.

Repairs to certified equipment should be coordinated by a representative designated by the supplier. Any repairs or alterations made by the user to this equipment, or equipment malfunctions, may give the telecommunications company cause to request the user to disconnect the equipment.

Users should ensure for their own protection that the electrical ground connections of the power utility, telephone lines and internal metallic water pipe system, if present, are connected together. This precaution may be particularly important to rural areas.



Caution: Users should not attempt to make such connections themselves, but should contact the appropriate electric inspection authority, or electrician, as appropriate.

Canadian Notice

Note: The Canadian Department of Communications label identifies certified equipment. This certification means that the equipment meets certain telecommunications network protective, operational and safety requirements. The Department does not guarantee the equipment will operate to the user's satisfaction.

Before installing this equipment, users should ensure that it is permissible to be connected to the facilities of the local telecommunications company. The equipment must also be installed using an acceptable method of connection. In some cases, the company's inside wiring associated with a single line individual service may be extended by means of a certified connector assembly (telephone extension cord). The customer should be aware that compliance with the above conditions may not prevent degradation of service in some situation.

Repairs to certified equipment should be made by an authorized Canadian maintenance facility designated by the supplier. Any repairs or alterations made by the user to this equipment, or equipment malfunctions, may give the telecommunications company cause to request the user to disconnect the equipment.

Users should ensure for their own protection that the electrical ground connections of the power utility, telephone lines and internal metallic water pipe system, if present, are connected together. This precaution may be particularly important in rural areas.



Caution: Users should not attempt to make such connections themselves, but should contact the appropriate electric inspection authority, or electrician, as appropriate.

The *Load Number (LN)* assigned to each terminal device denotes the percentage of the total load to be connected to a telephone loop which is used by the device, to prevent overloading. The termination on a loop may consist of any combination of devices subject only to the requirement that the total of the Load Numbers of all the devices does not exceed 100.

This equipment does not support line loopbacks.



Warning: THE DIGITAL APPARATUS DOES NOT EXCEED THE CLASS A LIMITS FOR RADIO NOISE EMISSIONS FROM DIGITAL APPARATUS SET OUT IN THE RADIO INTERFERENCE REGULATIONS OF THE CANADIAN DEPARTMENT OF COMMUNICATIONS.

LE PRESENT APPAREIL NUMERIQUE N'EMET PAS DE BRUITS RADIOELECTRIQUES DEPASSANT LES LIMITES APPLICABLES AUX APPAREILS NUMERIQUES DE LA CLASSE A PRESCRITES DANS LE REGLEMENT SUR LE BROUILLAGE RADIOELECTRIQUE EDICTE PAR LE MINISTRE DES COMMUNICATIONS DU CANADA

FCC INFORMATION

This device complies with Part 15 of the FCC Rules. Operation is subject to the following two conditions:

1. This device may not cause harmful interference, and
2. This device must accept any interference received, including interference that may cause undesired operation.

Note: This equipment has been tested and found to comply with the limits for a Class B digital device, pursuant to part 15 of the FCC Rules. These limits are designed to provide reasonable protection against harmful interference in a residential installation. This equipment generates, uses and can radiate radio frequency energy and, if not installed and used in accordance with the instructions, may cause harmful interference to radio communications. However, there is no guarantee that interference will not occur in a particular installation. If this equipment does cause harmful interference to radio or television reception, which can be determined by turning the equipment off

and on, the user is encouraged to try to correct the interference by one or more of the following measures:

- Reorient or relocate the receiving antenna.
- Increase the separation between the equipment and receiver.
- Connect the equipment into an outlet on a circuit different from that to which the receiver is connected.
- Consult the dealer or an experienced radio/TV technician for help.

Caution: Any changes or modifications not expressly approved by the party responsible for compliance could void the user's authority to operate this equipment.

FCC Radiation Exposure Statement

This equipment complies with FCC RF radiation exposure limits set forth for an uncontrolled environment. This equipment should be installed and operated with a minimum distance of 20 centimeters between the radiator and your body.

Article 12

Without permission, any company, firm or user shall not alter the frequency, increase the power, or change the characteristics and functions of the original design of the certified lower power frequency electric machinery.

Article 14

The application of low power frequency electric machineries shall not affect the navigation safety nor interfere a legal communication, if an interference is found, the service will be suspended until improvement is made and the interference no longer exists.