

Convertible Notebook

Guide

Copyright © 2009 All Rights Reserved.

Convertible Notebook Guide
Original Issue: 10/2009

Convertible Notebook Guide

Model number: _____

Serial number: _____

Date of purchase: _____

Place of purchase: _____

Convertible Notebook

The convertible notebook combines the computing power of a traditional notebook PC with the dynamic functionality of a tablet PC. Below you will find useful information to help you get the most out of your new computer.

Turning on your notebook

The power switch is located on the right side of the notebook to provide convenient access while in tablet mode.



Converting to tablet mode

Your notebook features a touch-sensitive, swivel-mount screen which allows it to convert to tablet mode.

- 1 Open the screen.
- 2 Rotate the screen 180° clockwise.
- 3 Fold the screen over the keyboard.

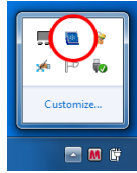
To return to notebook mode, lift the screen and rotate it counter-clockwise.



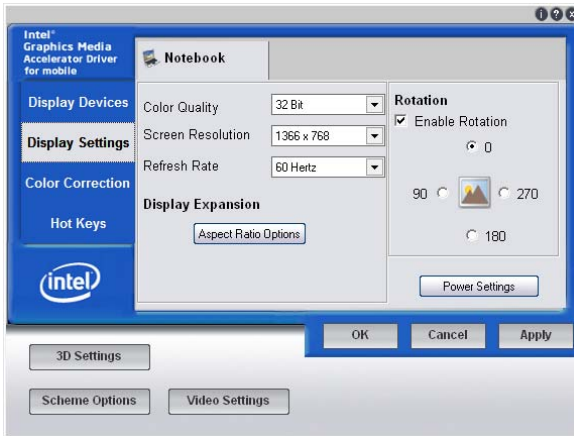
Note: A magnetic lock snaps into place to prevent the screen from inadvertently rotating while in tablet mode. To release the magnetic lock, gently lift the screen.

G-sensor

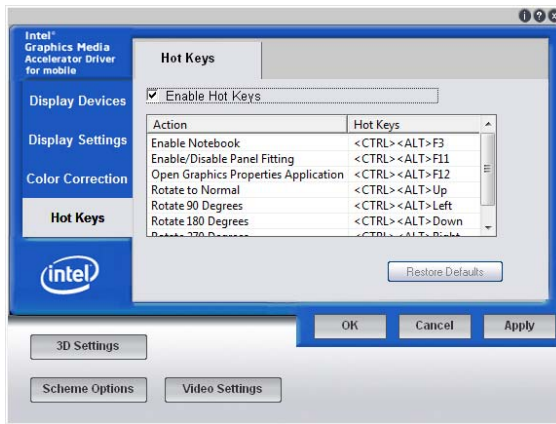
The G-sensor automatically changes the screen orientation depending on how the notebook is held. To set the G-sensor rotation, click on the **Intel Graphics Media Accelerator Driver** (circled) in the **Notification Area** and select **Graphics Properties**.



Select the **Display Settings** tab and check / uncheck **Enable Rotation**.



Under the **Hot Keys** tab, check to see if the **Hot Keys** are enabled. The **Hot Keys** must be enabled for the G-sensor to function properly.



Note: G-sensor is active only in tablet mode. Not all applications will display properly under portrait mode.

Pen-Mode and Finger-Mode

Your computer has a stylus that is stored in the lower right-hand side of the screen.

While Pen-Mode is active, your computer will only react to the stylus. This avoids inadvertently moving the cursor when your hand touches the screen while you are in tablet mode.

A pop-up dialog will ask if you want to enable Pen-Mode or Finger-Mode when launching supported programs.



Note: You may only use the stylus in Pen-Mode.

Calibrating your screen

You may find that you need to recalibrate the screen if it does not react properly to input when in tablet mode. To do this click **Start > Control Panel > Hardware and Sound > Tablet PC Settings**. On the **Display** tab, select **Calibrate**. Using the stylus, follow the instructions to tap the screen on the crosshairs displayed.

Right-clicking

To access right-click features while in tablet-mode, tap and hold on the screen until a ring appears and then lift the stylus.



Programmable key

The programmable key (P) allows you to launch predefined applications or user-defined applications at a push of a button. The first time you press the key, you will be able to select the application the key will launch.

Virtual keyboard

A virtual keyboard is available for text input while in tablet mode. To open the virtual keyboard, tap the screen and then tap the Input Panel tab that appears by default on the left edge of the screen. When you open the virtual keyboard, it floats on top of any open windows.



You can customize the virtual keyboard settings by clicking **Start > Control Panel > Tablet PC Settings** and in the **Other** tab select **Go to Input Panel Settings**.

Additional configuration options are available in **Start > Control Panel** under **Tablet PC settings** and **Pen and Touch**.



Pen and Touch

[Change tablet pen settings](#) | [Change settings for handwriting personalization](#) |
[Turn flicks on and off](#) | [Set flicks to perform certain tasks](#) | [Change touch input settings](#)



Tablet PC Settings

[Calibrate the screen for pen or touch input](#) | [Set tablet buttons to perform certain tasks](#) |
[Choose the order of how your screen rotates](#) | [Specify which hand you write with](#)