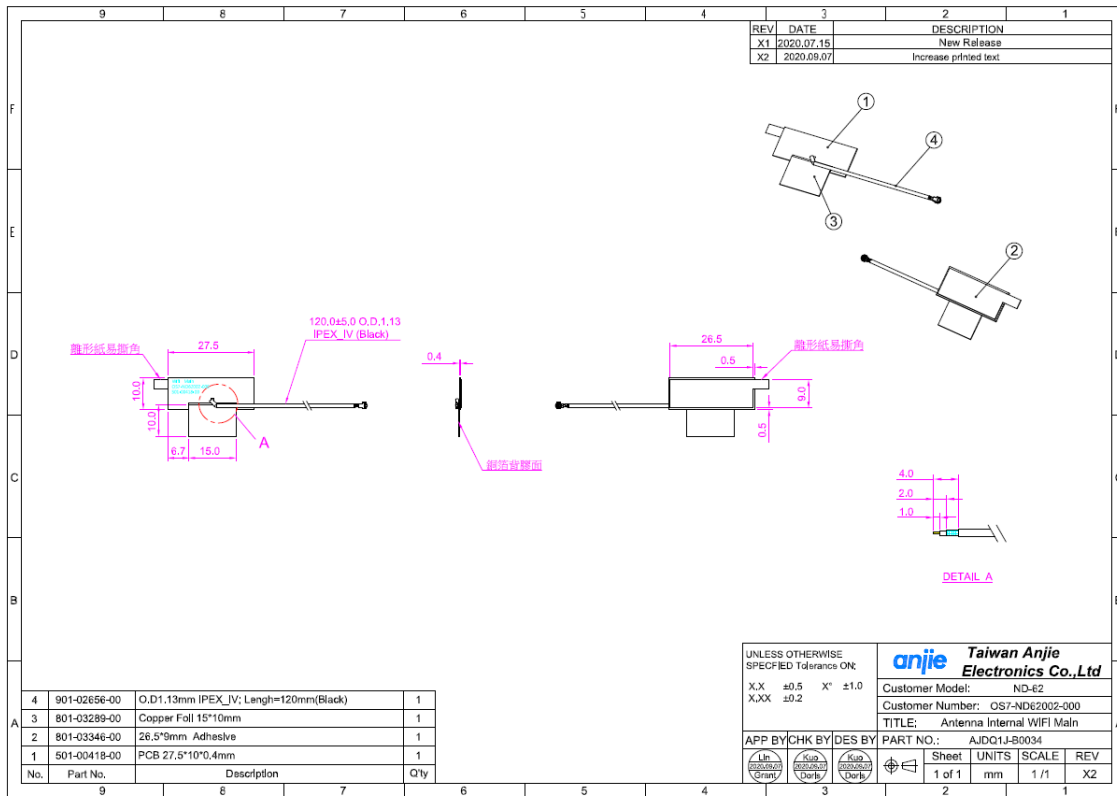


WLAN Antenna Information

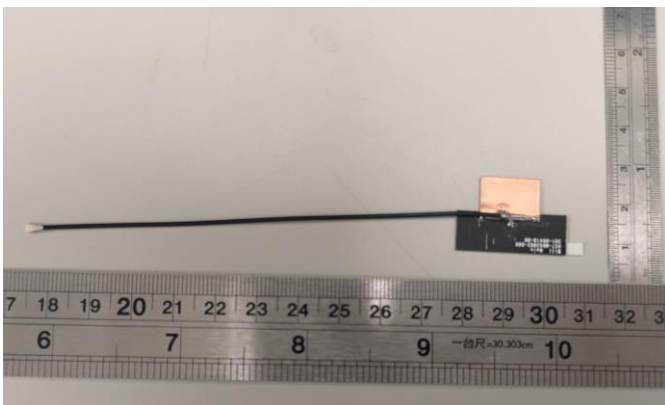
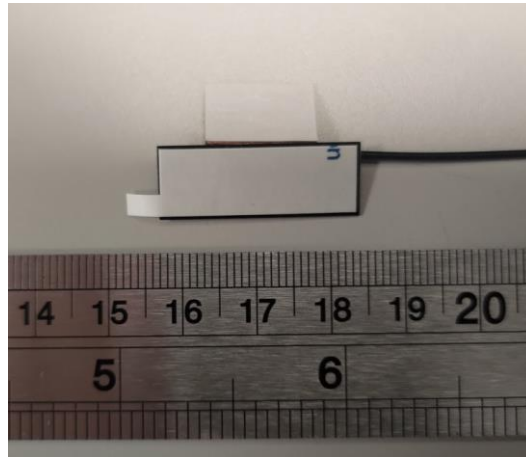
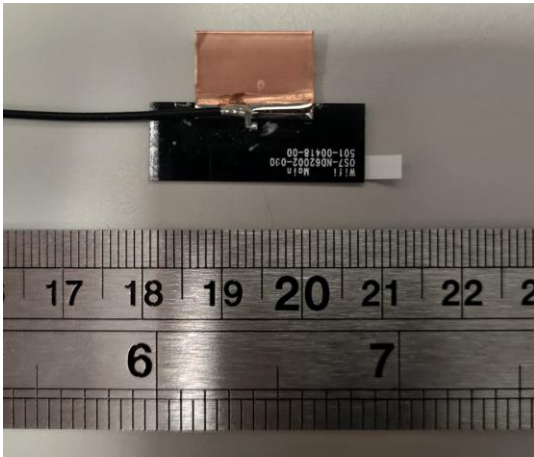
Platform information							
Brand		Product Name		Model Number			
unitech		Rugged Tablet Computer		TB170			
Antenna information				Peak gain w/ cable loss (dBi)			
Vendor	Type	Antenna Part number (Main)	Antenna Part number (Aux)	2.4GHz <small>2400-2500MHz</small>	5.2&5.3GHz <small>5150-5350MHz</small>	5.5GHz <small>5470-5725MHz</small>	5.8GHz <small>5725-5850MHz</small>
Anji	PIFA	OS7-ND62002-000	OS7-ND62001-000	4.5	3.4	4.9	4.9

Section 1. Dimensioned Photos or Drawings of Antennas

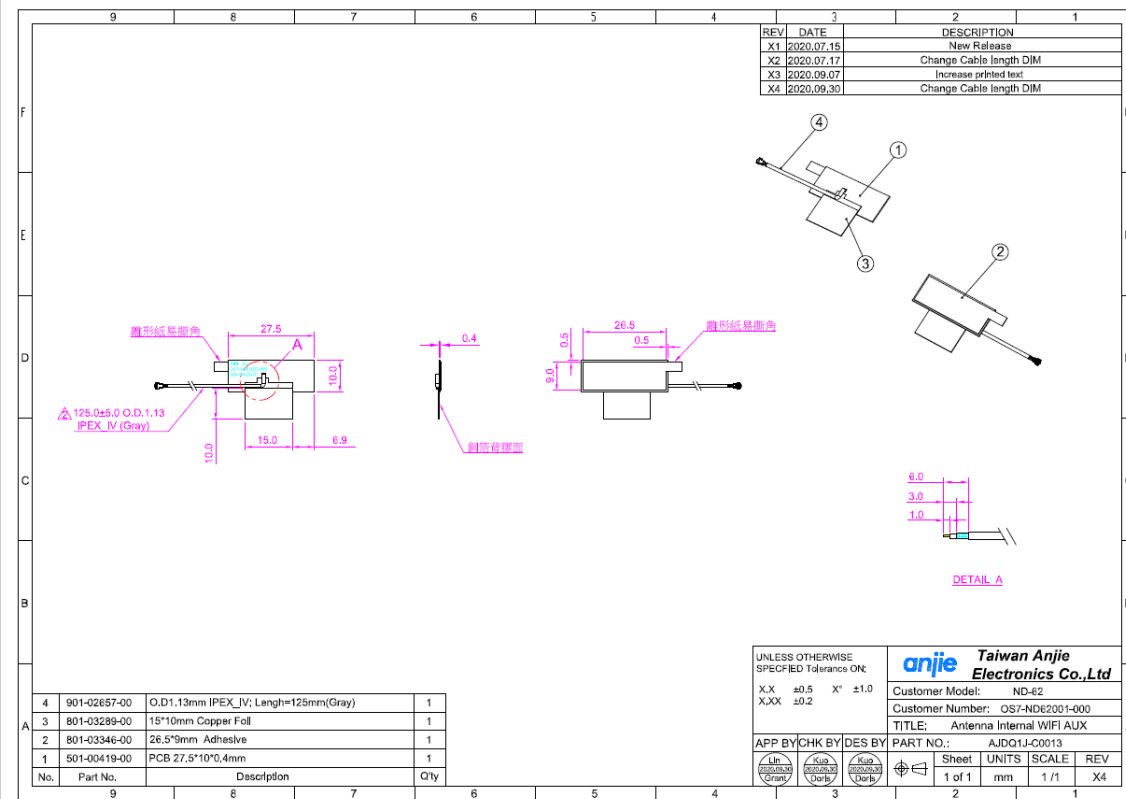
Main Antenna Dimensioned Drawing:



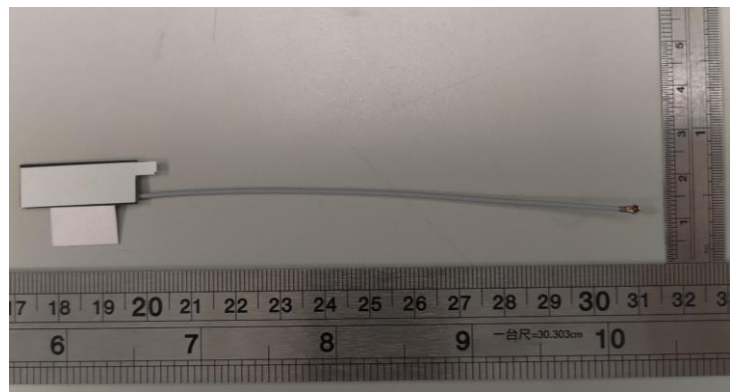
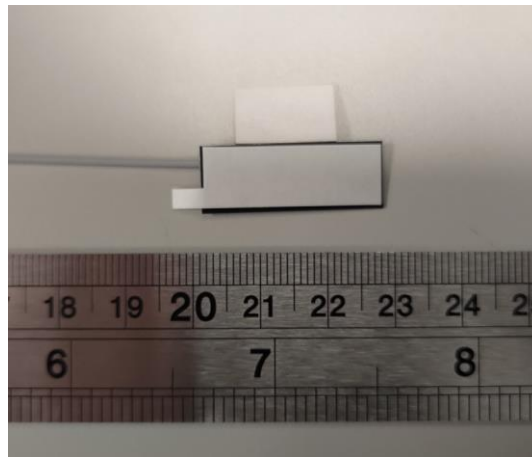
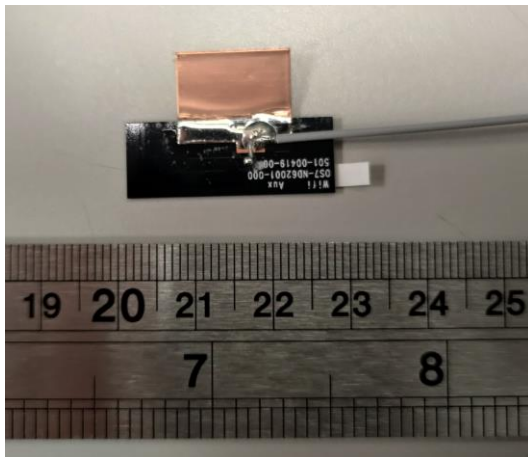
Main Antenna Photo:



Aux Antenna Dimensioned Drawing:



Aux Antenna Photo:



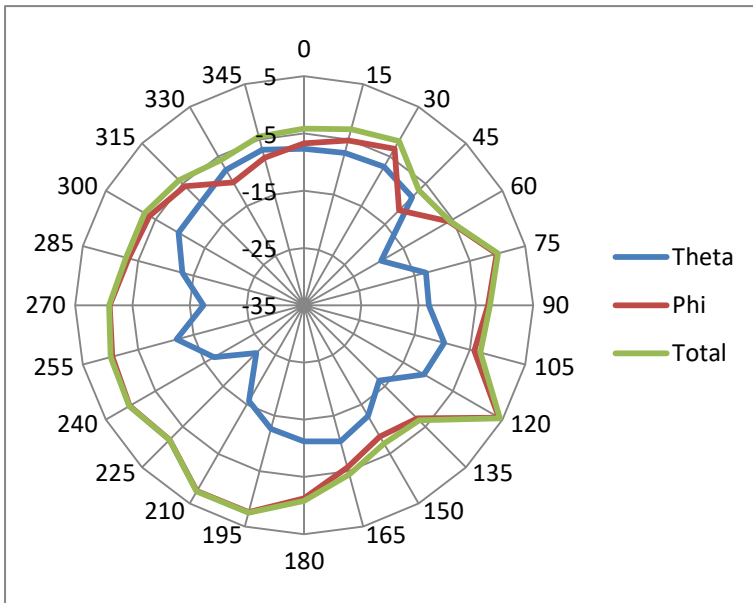
Section 2. Radiation characteristics of antennae Loaded in Host Platform

Antenna Radiation Gain Table:

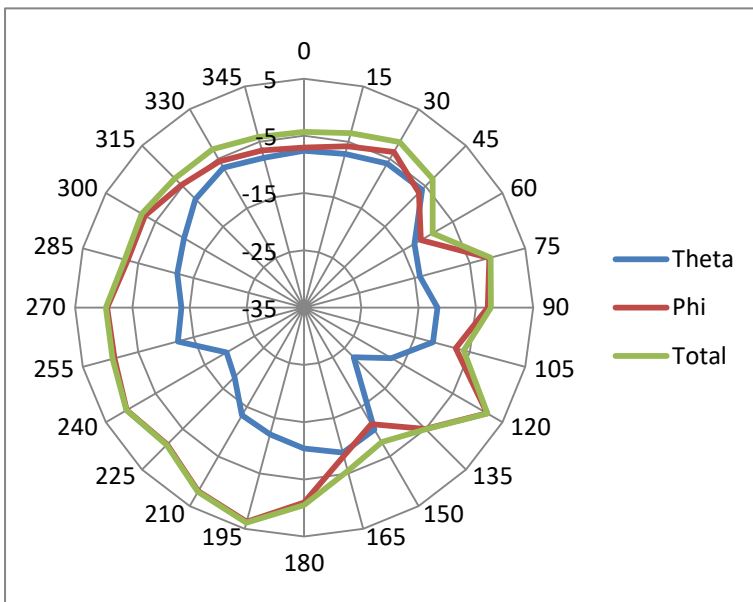
WLAN Antenna		Measured Data				
		Freq.	Efficiency (dB)		Peak Gain (dB)	
		(MHz)	Main	Aux	Main	Aux
WLAN	802.11 b/g	2400	-2.66	-2.41	4.50	3.10
		2450	-2.29	-2.59	3.90	2.50
		2500	-2.19	-2.36	3.70	2.30
	802.11 a/ac	5150	-3.36	-3.91	2.13	1.71
		5250	-3.03	-3.64	2.87	1.98
		5350	-2.69	-3.17	3.40	2.00
		5470	-2.30	-2.90	3.80	4.90
		5600	-3.15	-2.93	2.98	3.73
		5725	-2.89	-2.67	2.77	3.87
		5785	-2.32	-2.62	3.80	4.90
		5850	-2.76	-3.09	3.19	4.49

2400-2500MHz radiation characteristic

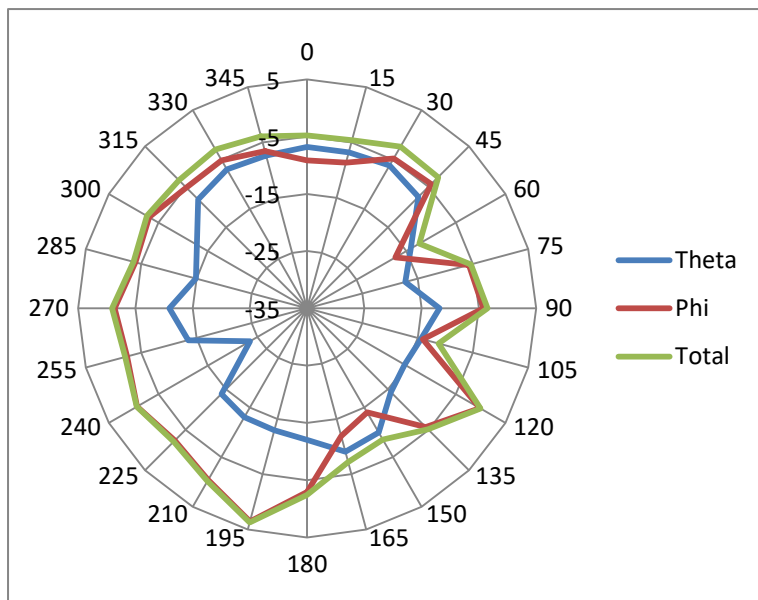
Main antenna: 2400 MHz



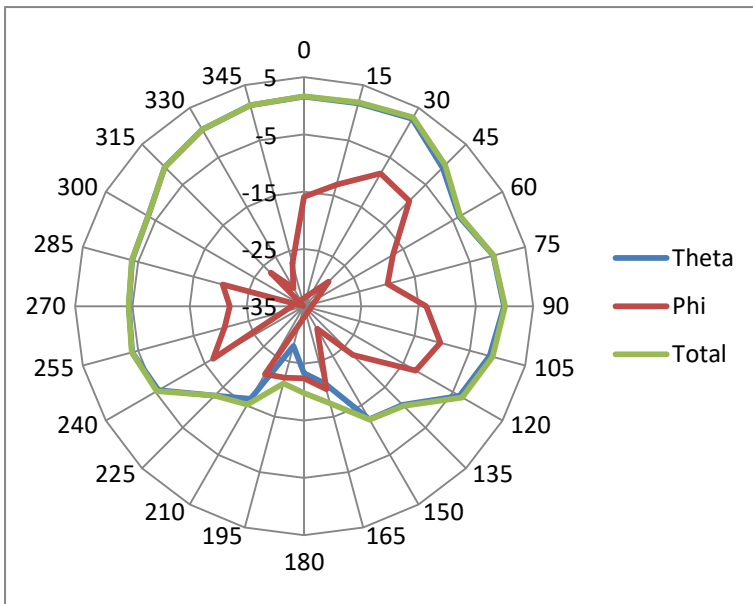
Main antenna: 2450 MHz



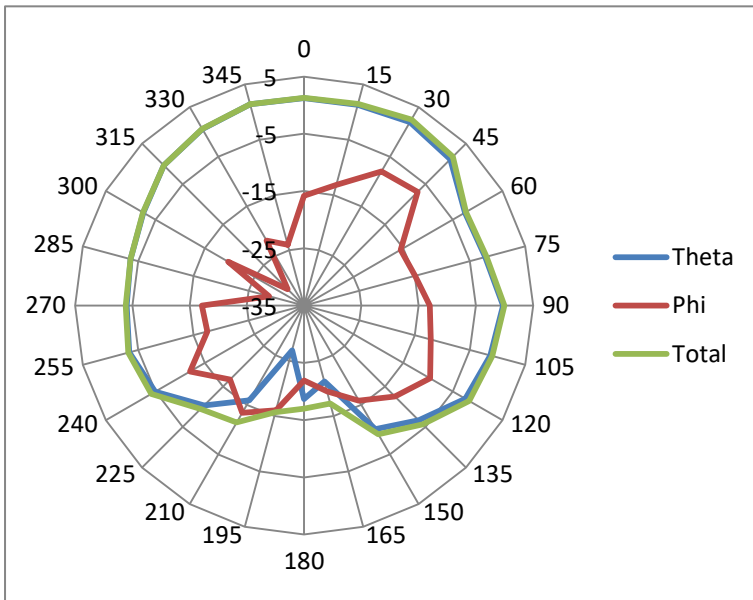
Main antenna: 2500 MHz



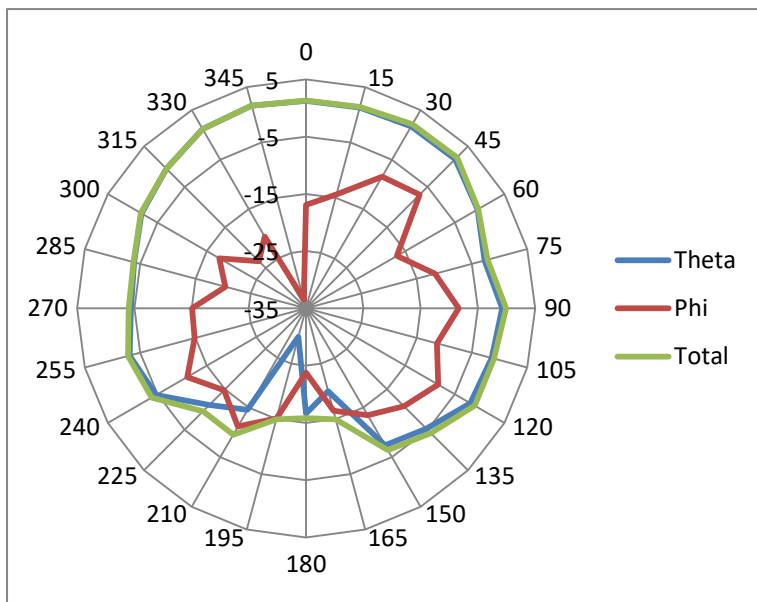
Aux antenna: 2400 MHz



Aux antenna: 2450 MHz

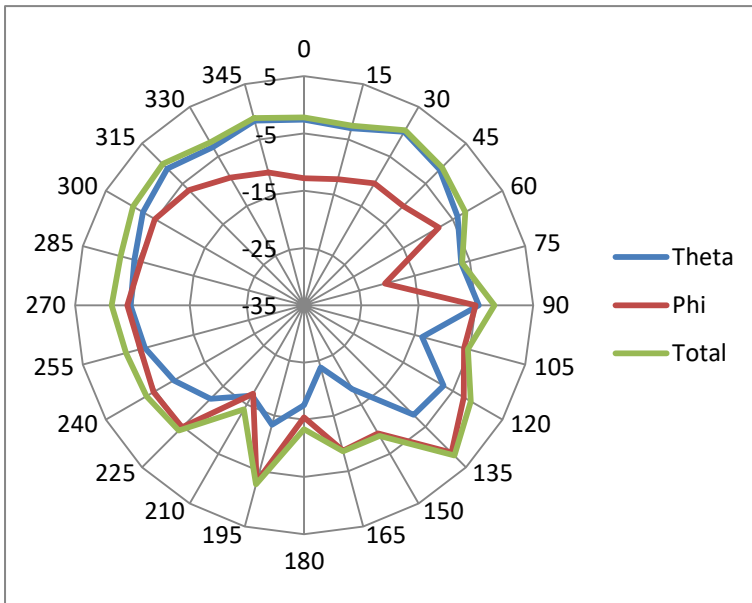


Aux antenna: 2500 MHz

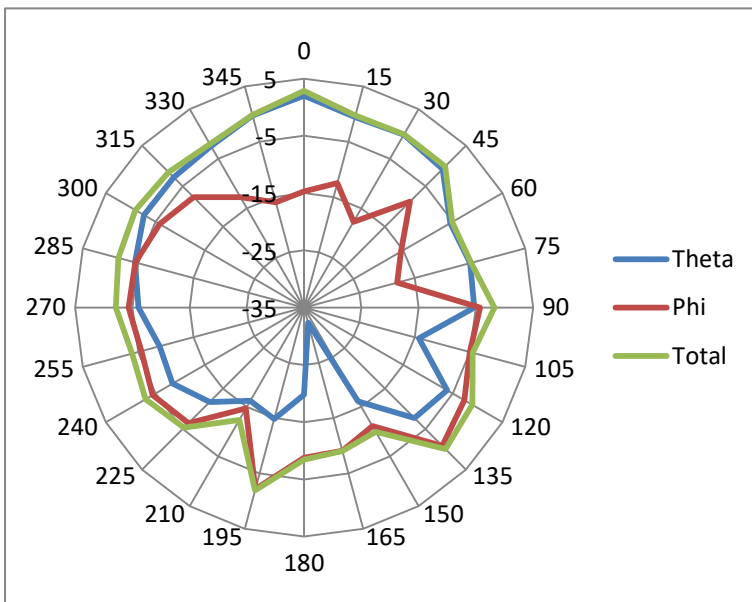


5150-5850 MHz radiation characteristic

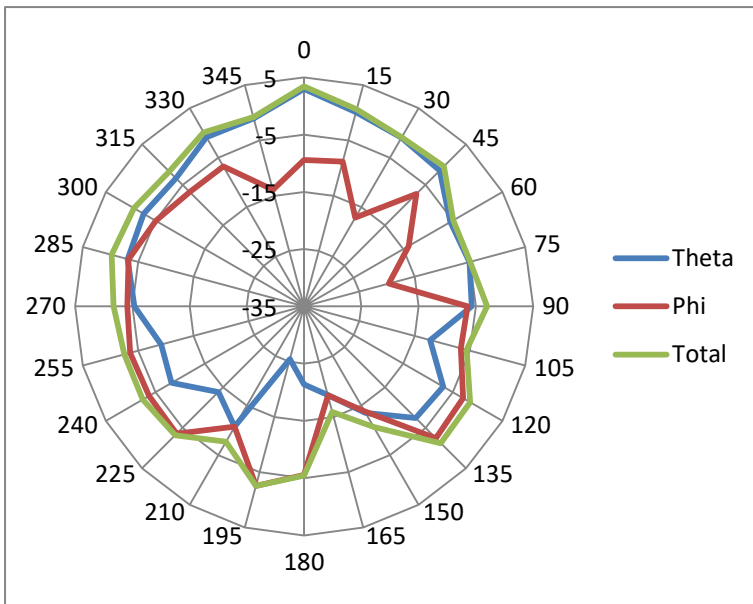
Main antenna: 5150 MHz



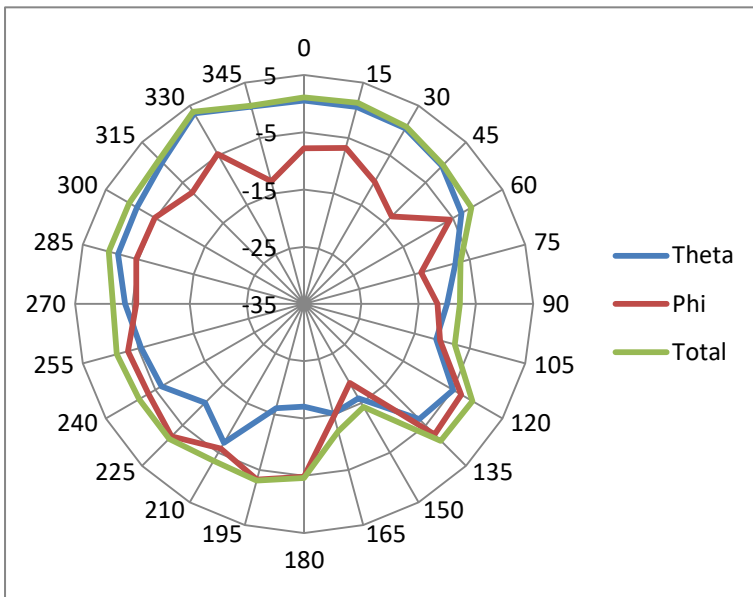
Main antenna: 5250 MHz



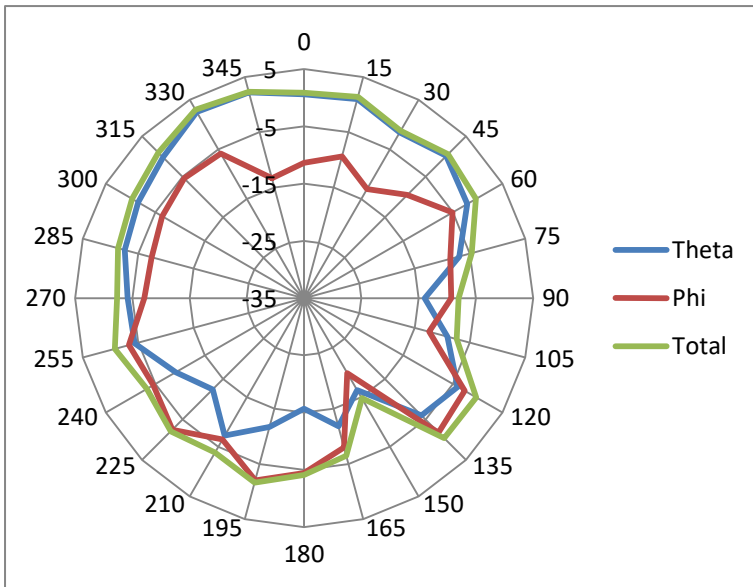
Main antenna: 5350 MHz



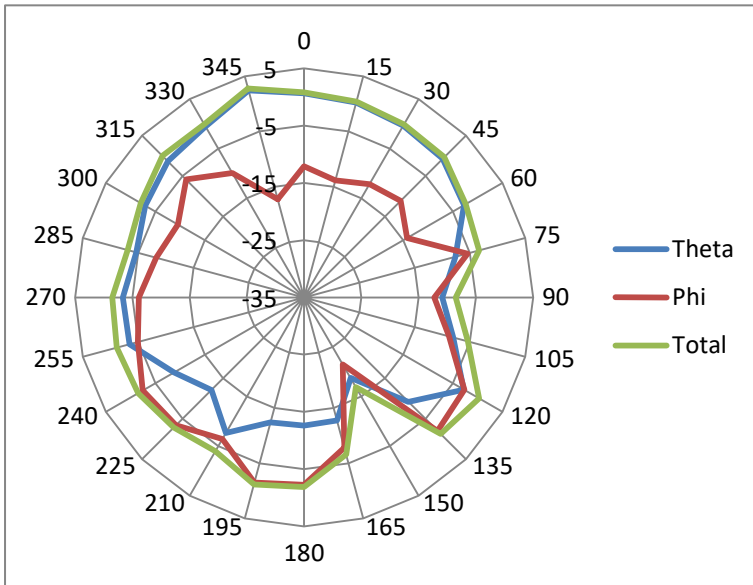
Main antenna: 5470 MHz



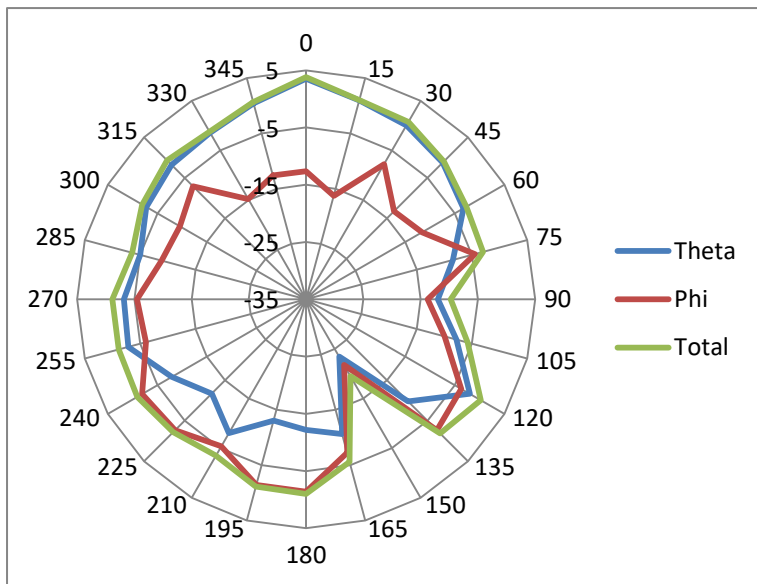
Main antenna: 5600 MHz



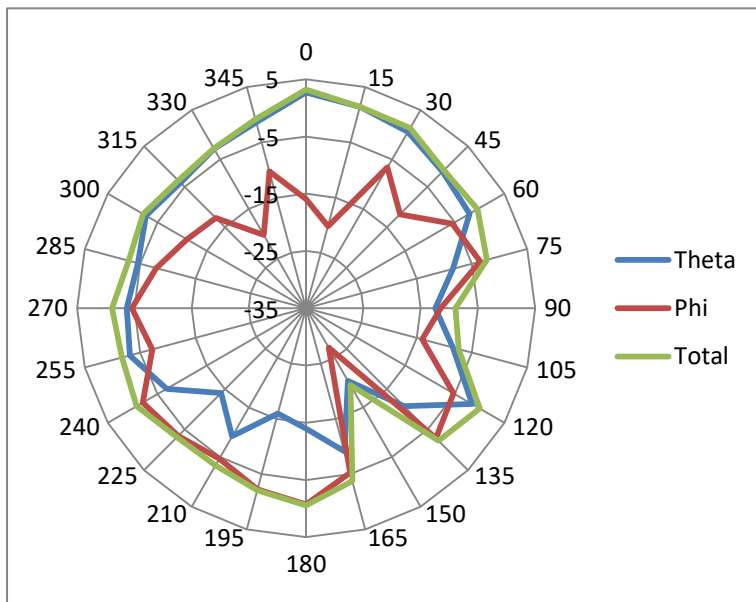
Main antenna: 5725 MHz



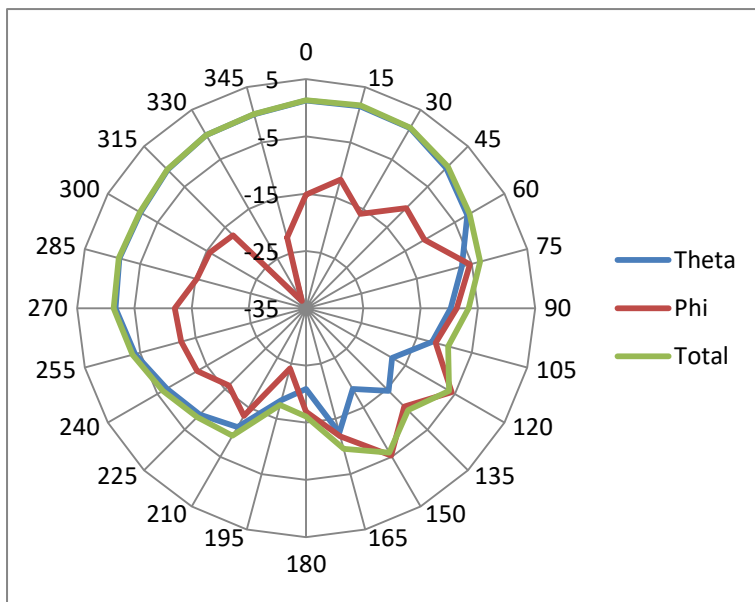
Main antenna: 5785 MHz



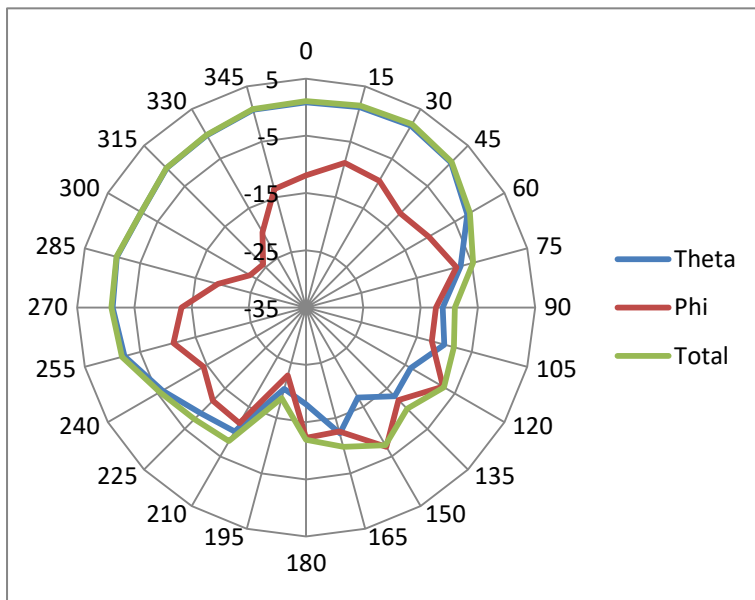
Main antenna: 5850 MHz



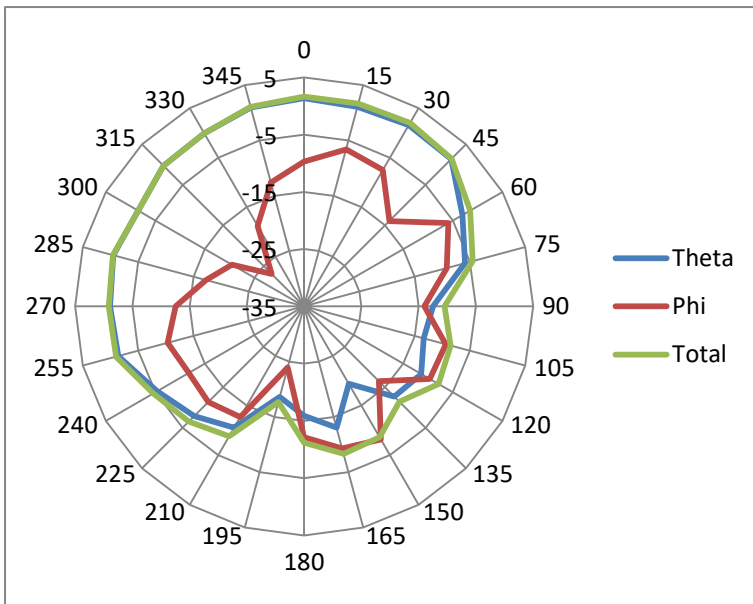
Aux antenna: 5150 MHz



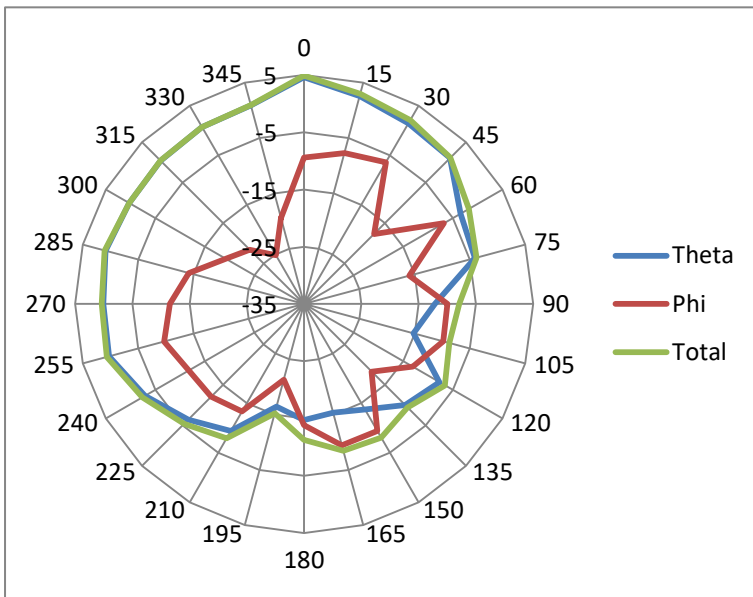
Aux antenna: 5250 MHz



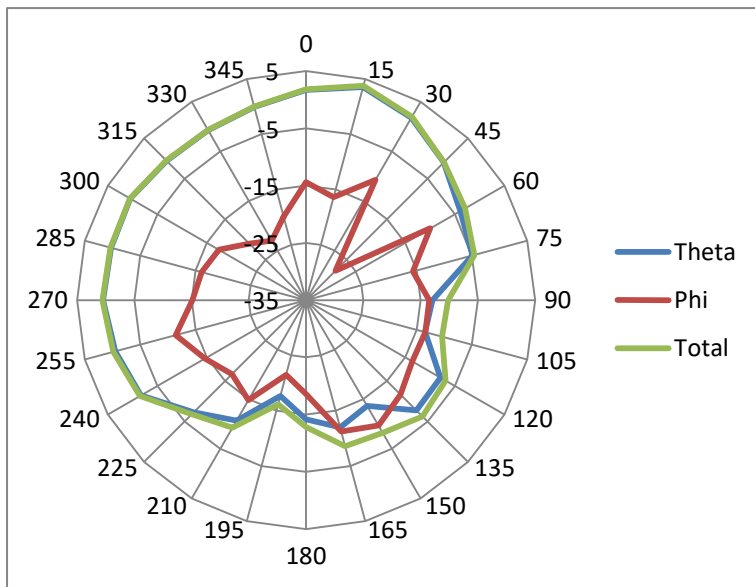
Aux antenna: 5350 MHz



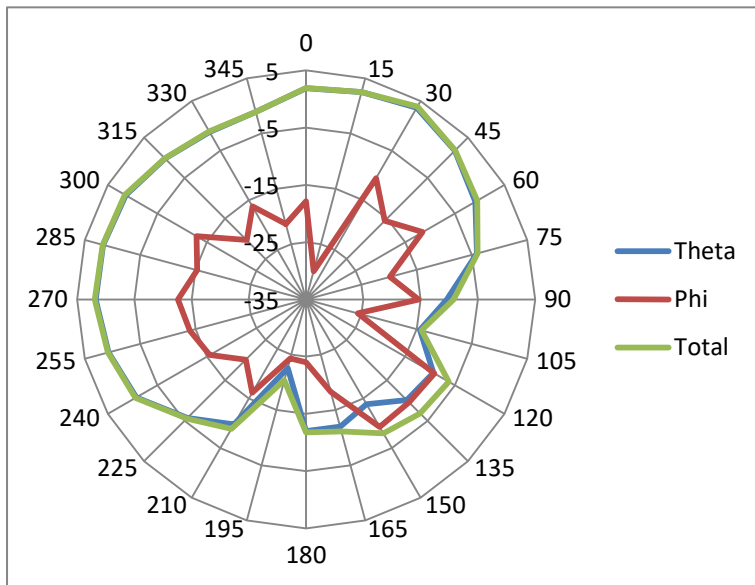
Aux antenna: 5470 MHz



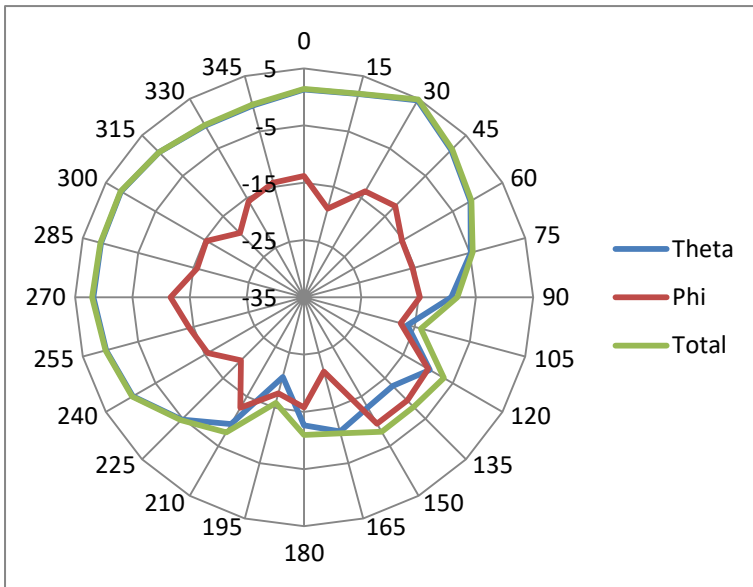
Aux antenna: 5600 MHz



Aux antenna: 5725 MHz



Aux antenna: 5785 MHz



Aux antenna: 5850 MHz

