


9. Click **Finish**.

You may be prompted to restart your computer.

After you have installed ActiveSync and restarted your computer, the ActiveSync icon  appears in your computer's system tray as shown and ActiveSync Connection Wizard starts. For detailed information on how to use ActiveSync on your computer, start ActiveSync then click **Help** → **Microsoft ActiveSync Help**.

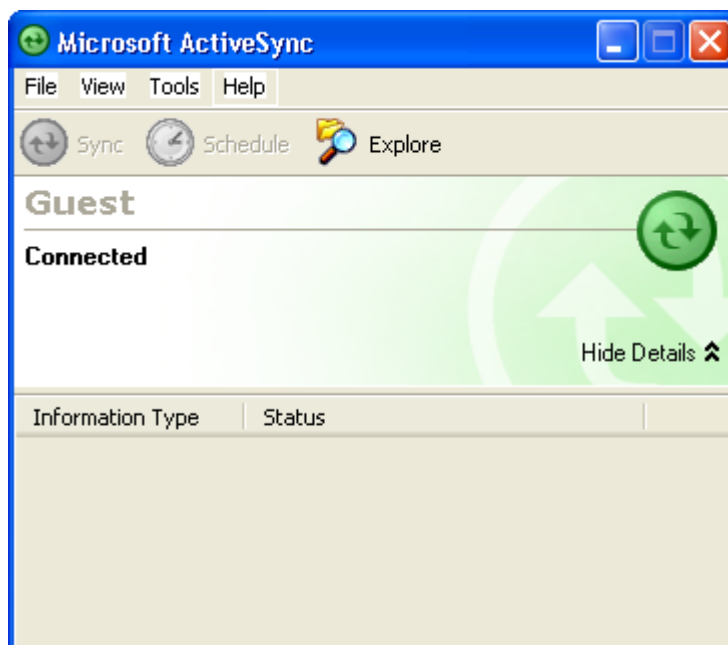
### Connecting the Device to Your Computer

1. After ActiveSync has been installed, connect the USB charging cable to the universal connector on the bottom of your device. If necessary, connect an adapter. Refer to *Connecting the PA600 II to a PC* on page 10.
2. Plug the other end of the USB charging cable into a USB port on your computer.
3. Turn the device on.
4. ActiveSync starts automatically and configure the USB port to work with the PA600 II. The New Partnership setup wizard will automatically start.

**NOTE:** If ActiveSync doesn't start automatically, click **Start** → **Programs** → **Microsoft ActiveSync**.

If a message appears indicating that it is unable to detect a connection, click the **Cancel** button and manually configure the communication settings.

5. Follow the onscreen instructions.
6. When the configuration process is complete, the ActiveSync window appears.



7. Synchronization will be initialized and will take place if you've chosen to synchronize periodically or upon connection.

**NOTE:** Your computer can create a partnership with multiple PA600 IIs. Also, a PA600 II can create a partnership with up to two computers.

## Synchronizing with Your Computer

Synchronization takes place according to the options you choose while setting up ActiveSync on your computer. If you accept the default (On Connect) synchronization option in the Microsoft ActiveSync Setup Wizard, you'll be able to simply connect your PA600 II to your desktop computer and synchronization will take place.

If you have not enabled the On Connect feature in Active Sync, you can start ActiveSync in either of the following ways:

- On your computer, double-click My Computer → Mobile Devices folder.
- Connect the USB cable between the computer and PA600 II.

### Connection options

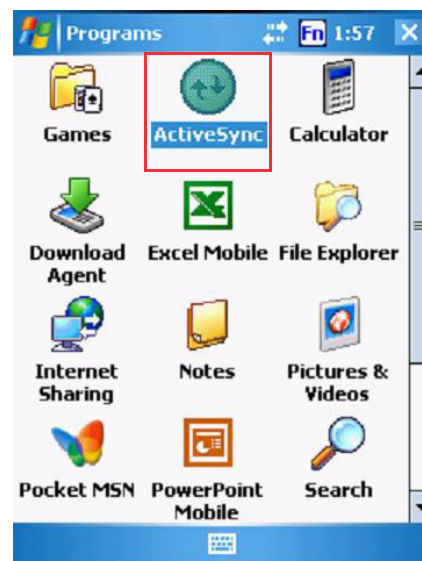
You can set remote synchronization with your computer using the following connection options:

- USB connection
- Bluetooth connection
- GPRS Connection
- WiFi connection

### USB Connection

To synchronize with your computer using a USB connection:

1. Connect your device to your computer using the USB charging cable.
2. Initiate connection by tapping **Start** → **Programs** → **ActiveSync**.
3. Tap **Menu** → **Connections**.
4. Select **Synchronize all PCs** using this connection check box.
5. Select a baud rate or cable type connection.
6. Tap **OK**.



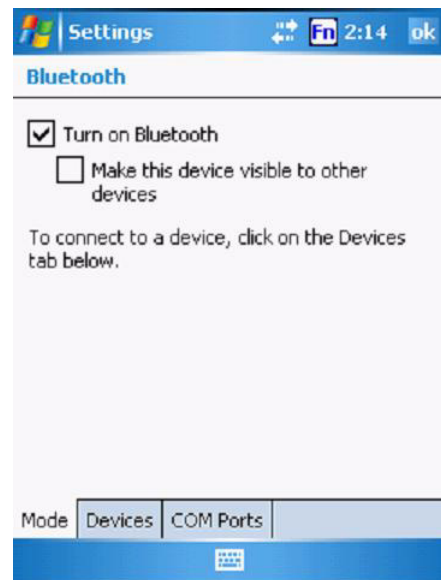
### Bluetooth Connection

Your device is equipped with Bluetooth wireless technology that you can use to synchronize information with a computer equipped with a Bluetooth adapter or access point. Bluetooth wireless technology allows you to communicate with the computer whenever it is within range.

Follow these instructions to set up a Bluetooth connection.

## Chapter 3 Getting Connected

1. Tap **Start** → **Settings** → **Connections** → **Bluetooth** → **Mode** and check **Turn on Bluetooth**.



2. Tap **Devices** → **Add new device**.



3. Select a device from the list and tap **Next**.

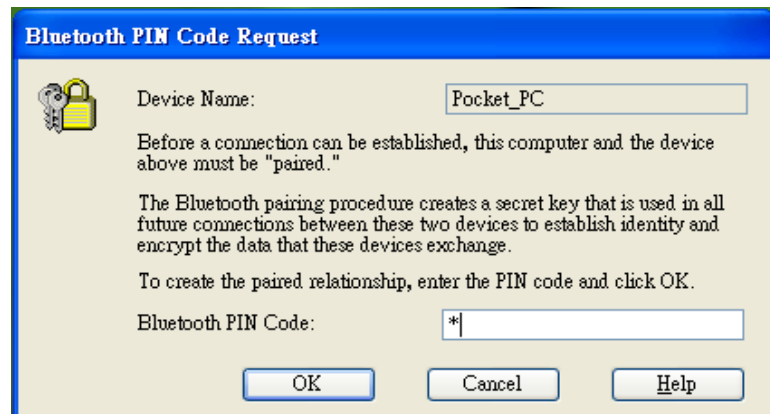


4. You are prompted for a passkey.
5. Enter the Passkey.



On the PC screen, you are prompted to enter the Bluetooth PIN Code Request.

6. Enter the same Bluetooth PIN Code you entered in step 4.



7. Select service. Check **Activesync** and tap **Finish**.
8. To preserve battery power, be sure to end the bluetooth activesync connection when synchronizing is complete. Tap **OK**.
9. From **Start** → **Programs**, double tap **ActiveSync**.
10. Tap Menu at right bottom corner. Select **Connect via Bluetooth**. Terminal connects to the host via Bluetooth Activesync.

### GPRS Connection

PA600 II comes with a built-in GPRS module, which allows you to connect to the internet. Follow the instructions below to access the internet.

**NOTE:** Make sure you insert the SIM card properly. See *Using the SIM Card* on page 19.

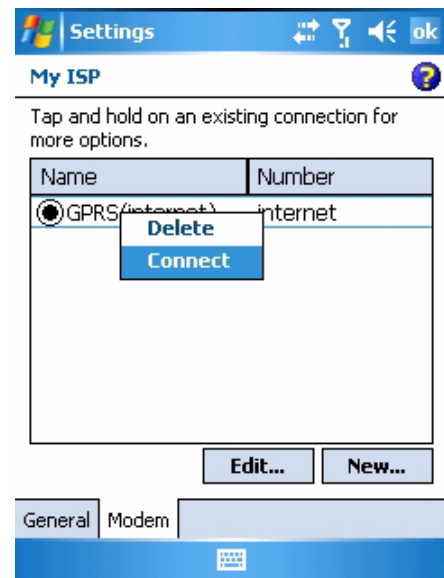
1. Tap **Start** → **Settings**. Under **Connections** tab, tap **Connections**.



2. Under My ISP, tap **Manage existing connections**.



- Tap and hold the GPRS (internet) in the list. Select **Connect**.  
A prompt appears, you are connected to internet via GPRS.



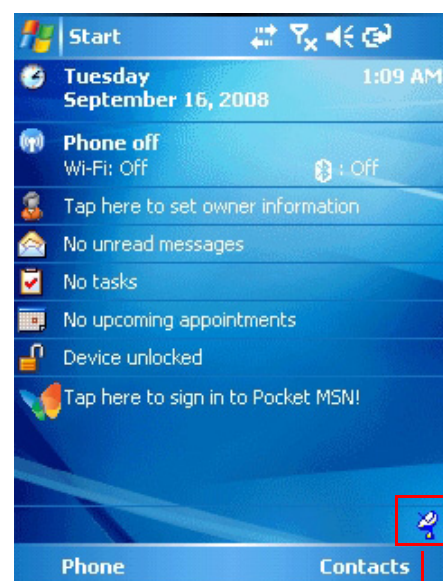
### WiFi Connection

With the device's embedded WLAN module, you can send and receive signals to a WiFi network then synchronize files.

**NOTE:** WiFi access requires a separate purchase of a service contract with a wireless service provider. Contact a wireless service provider for more information.

A wireless network can be added either when the network is detected or by manually entering settings information. Before doing these steps, determine if authentication information is needed.

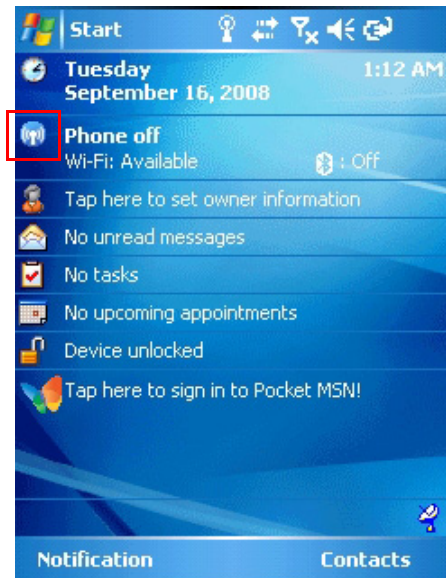
- If the WiFi icon appears on the device, double-tap the icon and tap **enable wireless**.



WiFi icon

## Chapter 3 Getting Connected

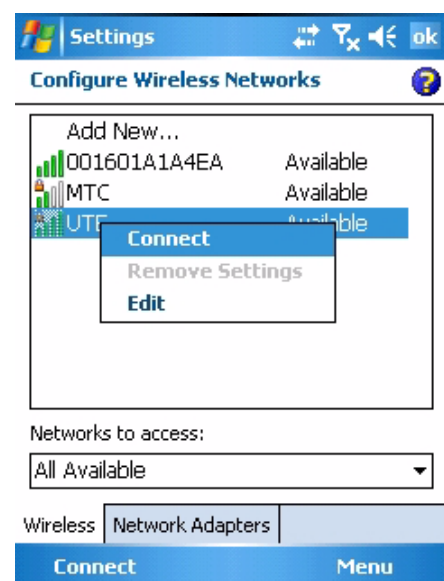
2. Tap the Wireless Manager icon.



3. Tap Menu at the right bottom corner of Wireless Manager. Select **Wi-Fi Settings**.



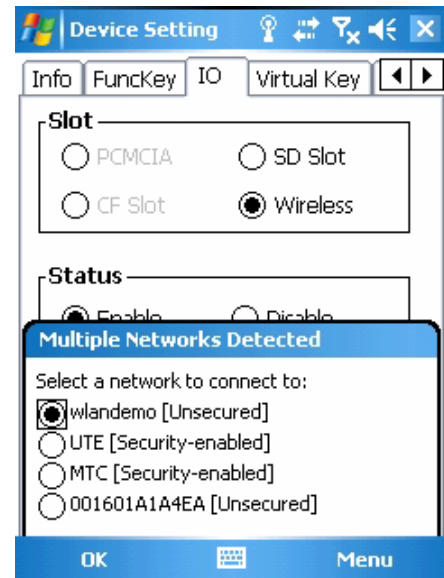
4. If there are available networks detected, tap and hold the network name, and then select **Connect**.





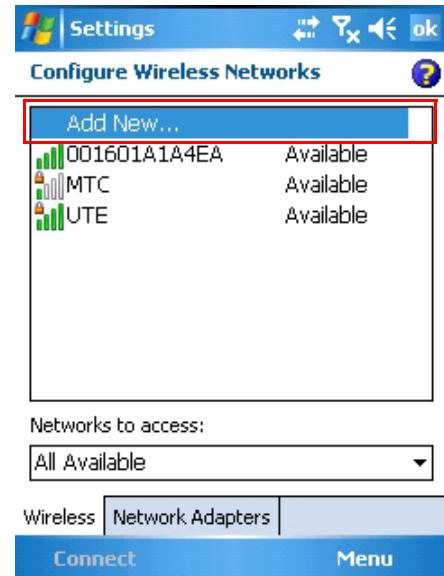
**NOTE:** Press **Func** key and “9” button to bring the **Device Setting** screen.

Under **IO**, select **Wireless** and **Enable**. While Multiple Networks Detected screen pop up, select a network to connect.

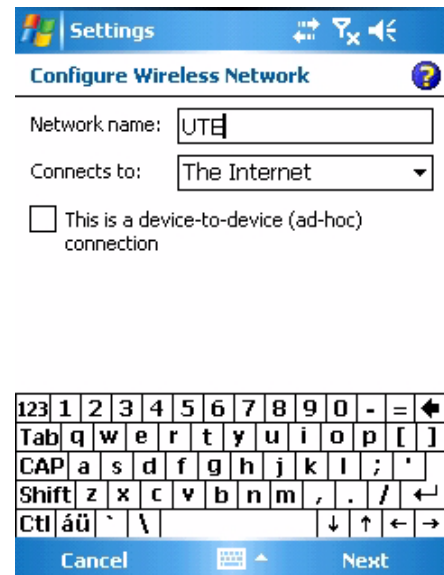


Follow instructions below to add a new wireless network.

1. Tap **Add New**. Configure Wireless Network screen appears.

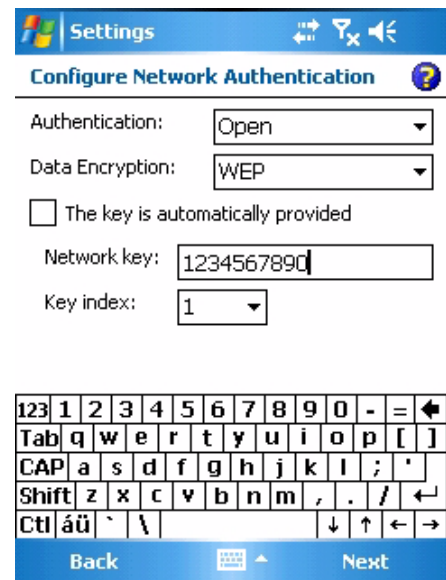


2. Enter a name for the network. Tap **Next**.

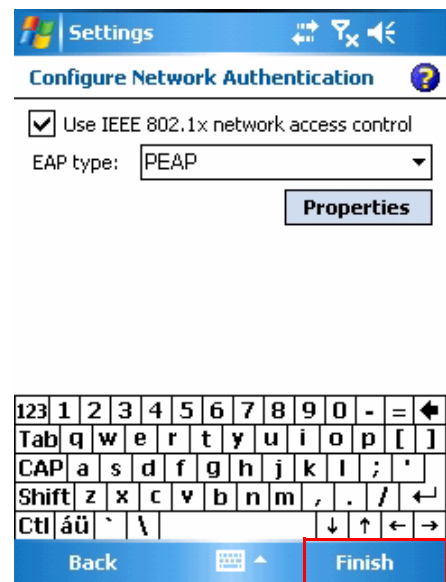




3. Enter the network key. Tap **Next**.



4. Tap **Finish**. Configure Wireless Network screen appears again, and the new wireless network becomes available in the list.



To disable the wireless network, you may do one of the following.

1. Double-tap the WIFI icon and tap **Disable Wireless**.
2. Tap the Wi-Fi bar in the Wireless Manager screen.
3. Press **Func** key and “9” button to bring the Device Setting screen. Under IO, select **Wireless** and **Disable**.

## Synchronizing Information

All files created on the device are stored in My Document/PA600 II My Document folder (if the designated device name is PA600 II). You can view files by double-clicking the PA600 II My Documents icon on your computer.

If you have enabled file synchronization, your PA600 II files are automatically synchronized in the My Documents folder on your computer, unless a different name was chosen for PA600 II.

### Synchronization Options

Synchronization options can be modified, including when you synchronize and what gets synchronized. In the Mobile Device window, click **Tools** → **Sync Options**.

For each type of information, the synchronization process can be hastened by limiting the amount of data to be synchronized. To do this, select a service and click the Settings button. After enabling a service, you must close and reopen the ActiveSync.

## Using ActiveSync to Exchange Files

You can use ActiveSync to exchange information from your device to your computer and vice versa. Changes you made to the information on one location will not affect the information on the other one. If you want to automatically update information on both your device and computer, synchronize the information instead.

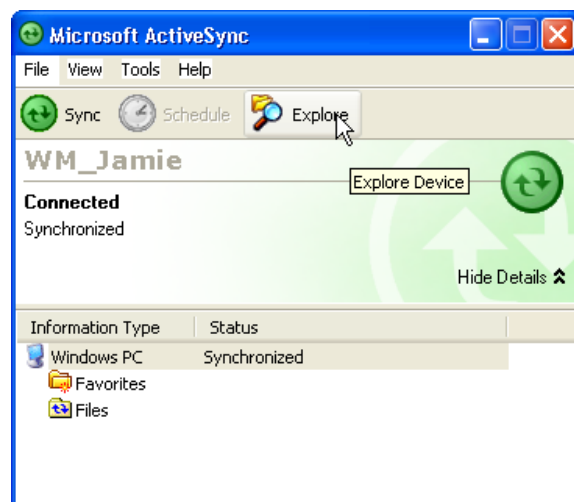
You can copy two types of information to your device: files and Pocket Access Windows CE Store information.

The procedure below only applies to copying files. Refer to the ActiveSync Help on your computer for instructions on how to copy Pocket Access Windows CE Store information.

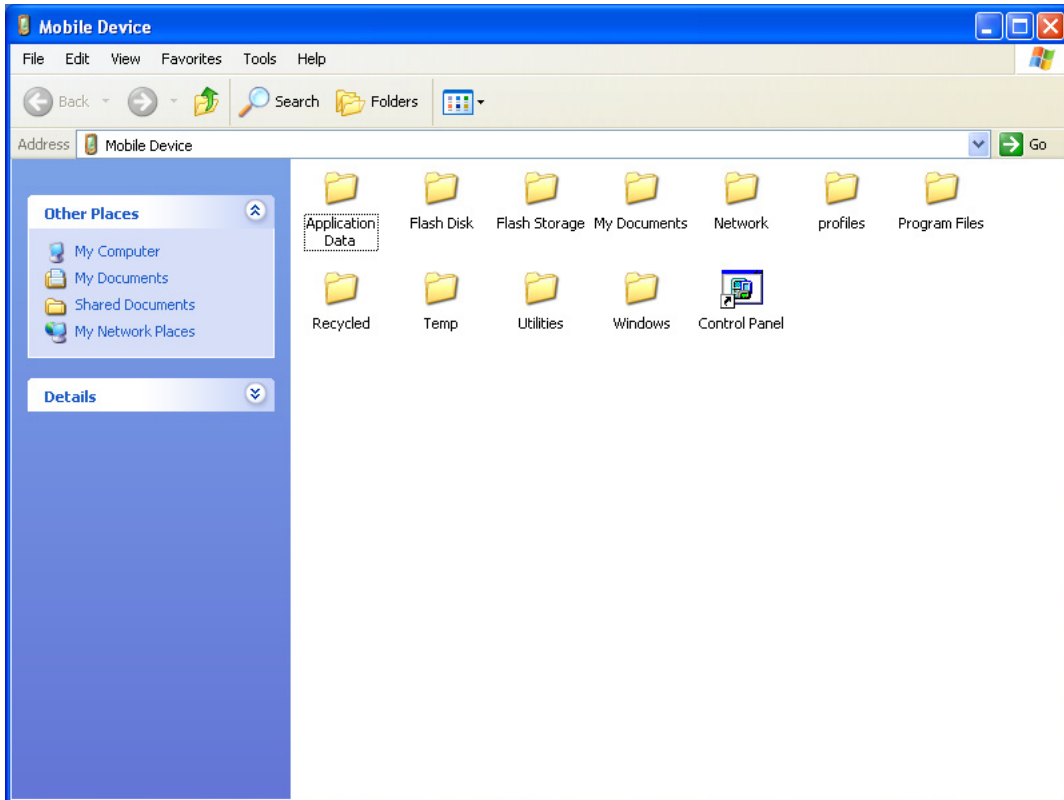
**NOTE:** Files created on your computer may need to be converted by ActiveSync so that they can be viewed and edited on your device, and vice versa.

To copy files:

1. Connect your device to your computer.
2. In ActiveSync on your computer, click **Explore**.



Windows Explorer opens the Mobile Device window for your device.



3. Locate the file that you want to copy on your device or computer.
4. Do either one of the following:
  - To copy the file to your device, right-click the file and click **Copy**. Place the cursor in the desired folder for your device, right-click, then click **Paste**.
  - To copy the file to your computer, right-click the file and click **Copy**. Place the cursor in the desired folder for your computer, right click, then click **Paste**.

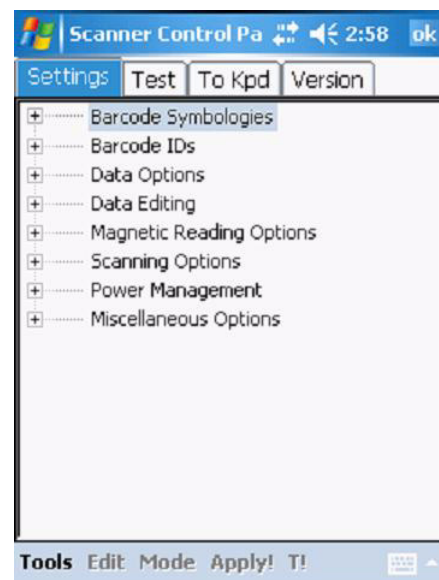
## Barcode Scanner Programs

### Scanner Setting

---

When it is necessary for the user to change the default barcode symbology for a different application, the Scanner Control Panel provides the ability to change default symbology, place delimiter characters behind scanned data, and save the settings.

Tap **Start** → **Settings** → **System** → **Scanner**.



### Scan2Key

---

The Scan2Key application routes input from a scanner port to a keypad buffer, making all input from the scanner emulate input from the keypad. Using Scan2Key, scanned data will be directed from the scanner port to any waiting (active/focused) text editor such as MS Mobile Word or a text box in an application.

### Barcode Symbologies

Barcode Symbology	Enable/Disable	Check Char/Digit verification	Transmit Check Char/digit	Max/Min Length	Transmit Leading Char/digit	Other
Bookland EAN	YES					
Codabar	YES	YES	YES	YES		Transmit start & stop bits, CLSI format, *data length
Code 11	YES		YES	YES		* check digits, *data length
Code 128	YES			YES		*data length
Code 32 (Pharmacy Code)	YES				YES	Transmit tailing digit
Code 39	YES	YES	YES	YES		Full ASCII, Transmit start & stop bits, Function Code, *data length, Double labels decoding, *Double labels separator
Code 93	YES			YES		*data length
Delta Code	YES	YES	YES			
EAN 128	YES					Transmit code ID, *Fields separator
EAN 13	YES		YES		YES	
EAN 8	YES		YES		YES	
Interleaved 2 of 5	YES	YES	YES	YES		*Not suppress start or stop digit, Fixed length, *data length
Label Code IV & V	YES		YES			
MSI/Plessey	YES		YES	YES		*Check digital double module 10, *data length
Standard 2 of 5	YES	YES	YES	YES		Fixed length, *data length
Telepen	YES					*Standard character set
UPC A	YES		YES		YES	
UPC E	YES		YES		YES	Zero expansion, NSC
UPC/EAN Group						Supplement 2, Supplement 5, Insert space before supplement, Must have supplement, *Add-on code try level

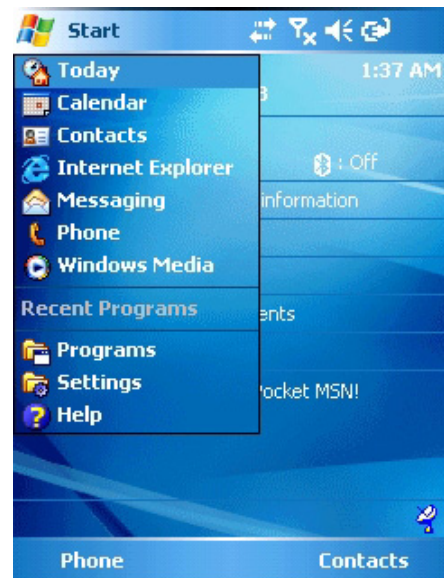
Note: \*Value Adjustable Scanner Control Panel V.5.11

# Advanced Settings

## Adjusting Settings

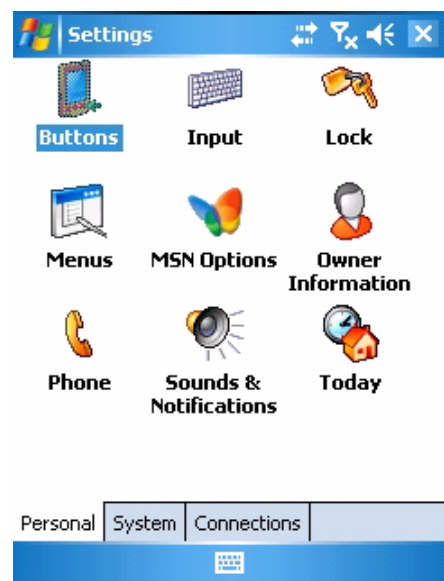
This section describes how to adjust the settings of your device to accommodate your work habits.

To access Settings, tap **Start** → **Settings**.



The **Settings** screen appears.

From here you can adjust such user configurable items as the backlight, auto power off timer, system volume, and processor speed. You can also assign functions to buttons, configure menus, enter owner information, and set up connections.



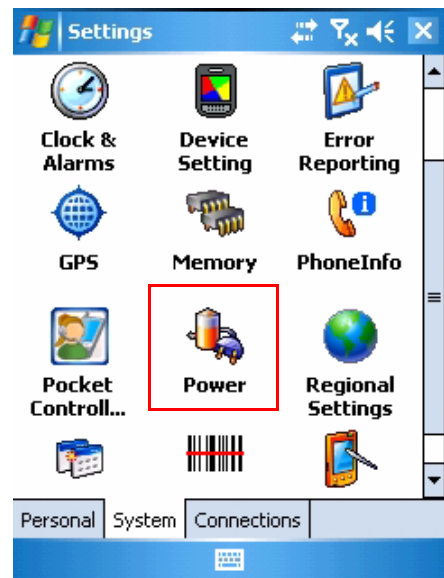
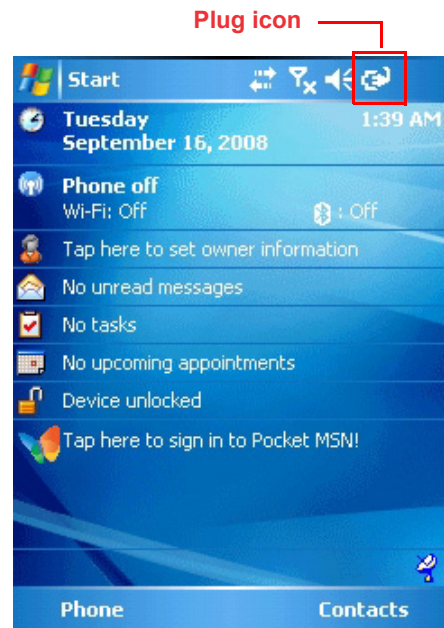
# Checking the Main and Backup Battery Status

This section describes how to view the power level for both the main and backup battery. To minimize power consumption, you can define settings for the auto-off function and the processor's operation speed.

To check the main and backup battery status:

1. Open Power Properties. Do either of the following:
  - If the Plug or Battery icon appears on your device, double-tap the icon to bring the Power Properties screen.

- Tap **Start** → **Settings** → **System** → **Power**.



**NOTE:** Press **Func** key and “**8**” button.

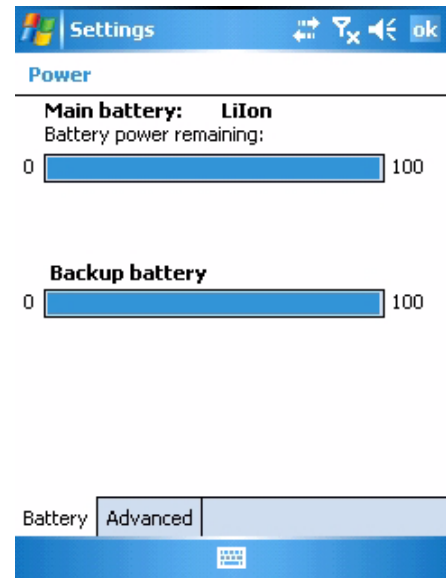


The Power screen appears.

2. The battery menu item displays the status of the main and backup batteries.

On the screen shown here, both batteries are Good.

**NOTE:** It is necessary to charge the battery when the battery charge reaches below 10%. If the battery does not accept a charge, contact unitech Technical Support.



## Extending Battery Life

You can extend the PA600 II battery life by doing either of the following:

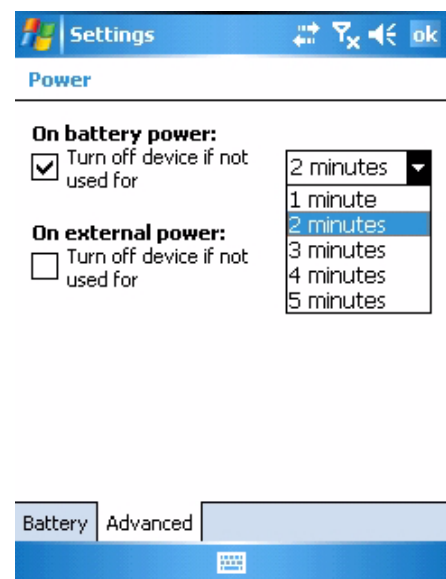
- Change the automatic power settings
- Minimize the use of backlight

### Changing the Automatic Power Settings

The PA600 II will enter idle mode when there is no task, or all tasks are waiting for input. In default setting, the PA600 II automatically turns itself off if it remains idle for 3 minutes and when there is no external charging power connected. Pressing the power button returns the PA600 II to the same point at the time of automatic shutdown.

To change the automatic power settings:

1. In the Power screen tap the **Advanced** tag.
2. Tap the automatic shut off time arrow to select from a list of time periods. The available time periods are 1, 2, 3, 4, and 5 minutes.
3. This function can also be activated when the PA600 II is plugged into the power adapter or placed in its docking station by tapping the **On external power** check box and then tapping the arrow to select from a list of time periods. The available time periods are 1, 2, 5, 10, 15, and 30 minutes.



### Adjusting Backlight Setting

The power consumption of the LCD backlight is high, turn off the backlight function if it is not necessary.

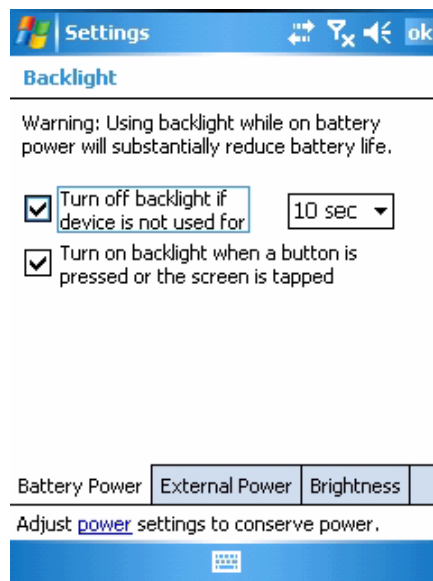
If a backlight is required, set “automatically turn off the backlight” function.

To change backlight settings:

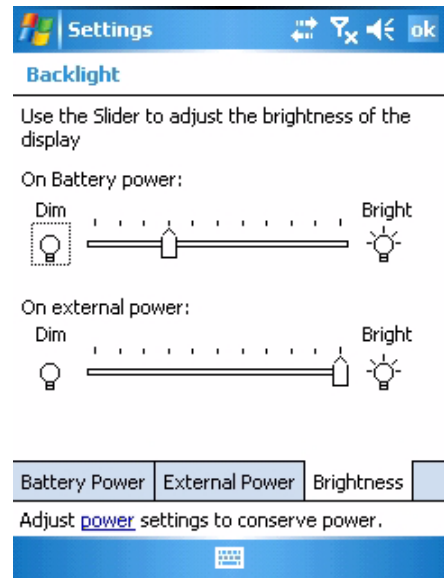
1. Tap **Start** → **Settings** → **System**.
2. Tap **Backlight**.



3. The Backlight screen appears. Do any of the following:
  - In the Battery Power tab, tap the **Turn off backlight if device is not used for** checkbox and select the amount of time before the unit turns off the backlight while running in battery power mode from the drop-down list.
  - In the External Power tab, tap the **Turn off backlight if device is not used for** checkbox and select the amount of time before the unit turns off the backlight while running in external power mode from the drop-down list.
  - Tap the **Turn on backlight when** checkbox to activate the backlight when a button is pressed or the screen is tapped.



- In the Brightness tap, tap and drag the slider to adjust a dimmer backlight.



## Viewing Flash Memory Files

The Flash Storage folder is a rewritable location for programs or data files. The benefit of this feature is that files and programs saved in Flash Storage are unaffected by the PA600 II power status.

To access the Flash Memory files:

1. Tap My Device > Flash Storage folder.

To transfer files to the Device's flash memory:

1. Connect the device to your computer by ActiveSync.
2. On your computer's Activesync, Click Mobile Device > Flash Storage.
3. Select the file that you want to transfer.
4. Drag the file from your terminal's flash storage folder to your computer's folder or drag the file from your computer's folder to the terminal's flash storage folder.

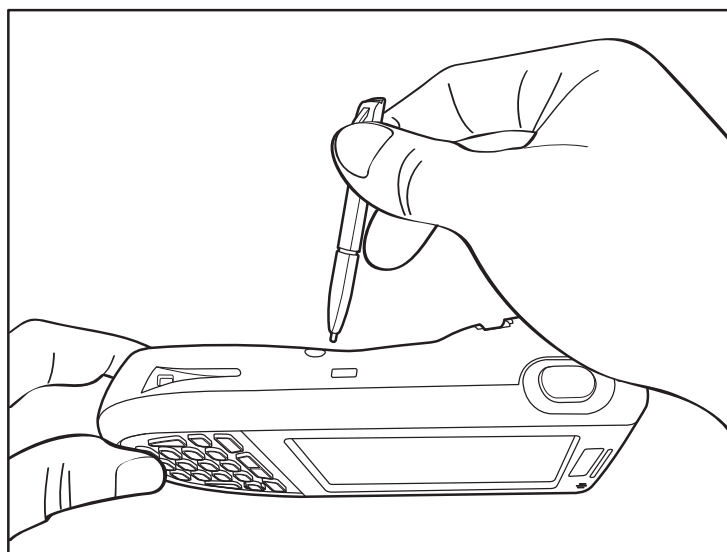
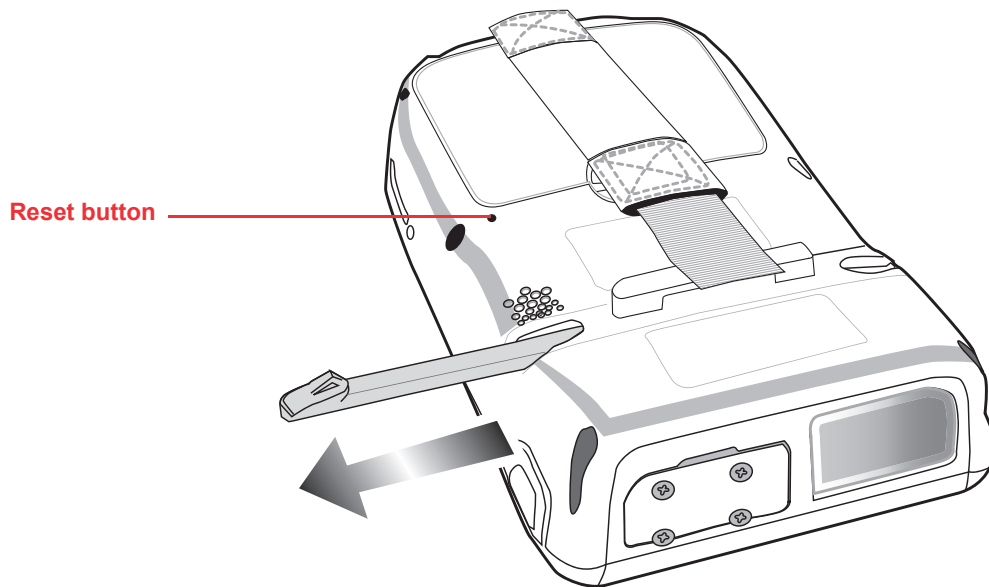
### Performing a hardware reset

You may have to perform a reset if the device freezes (i.e., device no longer responds to the buttons or tapping on the screen).

A soft reset allows your device to get a fresh start, similar to rebooting a computer. This will restart your device and adjust memory allocation. All records and entries are retained after a soft reset. Unsaved data in open programs may in some cases be lost.

#### Performing a Warm Boot

1. Remove the stylus from its holder.
2. Lightly press the tip of the stylus to the reset button located on the rear of the PA600 II.



### Performing a Cold Boot

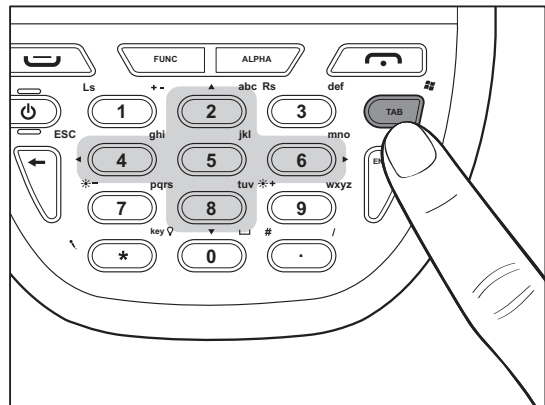
A cold boot cuts off power of your device, erasing all records and entries, deleting all programs you have added, and restoring the device to default factory settings.

When you perform a cold boot, the date and time settings are not be retained. Formats, preferences, and other settings are restored to their default factory settings. Data stored in the flash storage are retained.

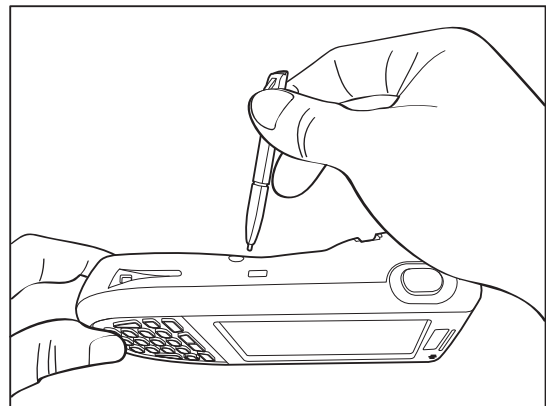
**NOTE:** Never perform a hard reset unless a soft reset does not correct your problem. When you perform your next ActiveSync operation, you can restore any data that you previously synchronized to your computer or you can restore data that you backed up to a storage card.

Follow these instructions to perform a cold boot.

1. Press the TAB key.



2. While holding the TAB key, insert the tip of the stylus into the reset hold on the back of the PA600 II. Press and hold the reset button until you see the unitech splash logo screen. Wait 5 seconds and then release the TAB key.



**NOTE:** The system is returned to the default settings. All registry settings and all files (include the hidden files) are returned to their original factory defaults.

### Performing a Clean Boot

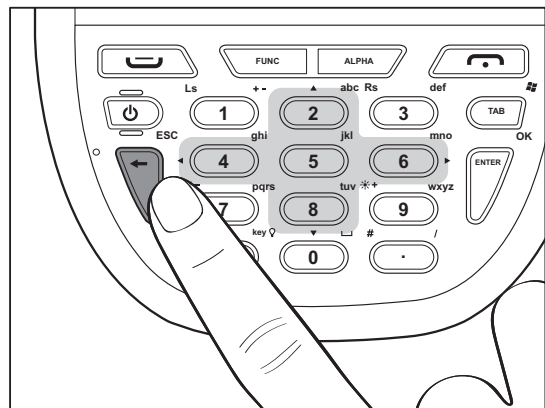
A clean boot, similar to cold boot, cuts off power of your device, erasing all records and entries, deleting all programs you have added, cleaning storage memory, and restoring the device to default factory settings.

When you perform a clean boot, the date and time settings are not be retained. Formats, preferences, and other setting are restored to their default factory settings. Data stored in the flash storage are retained.

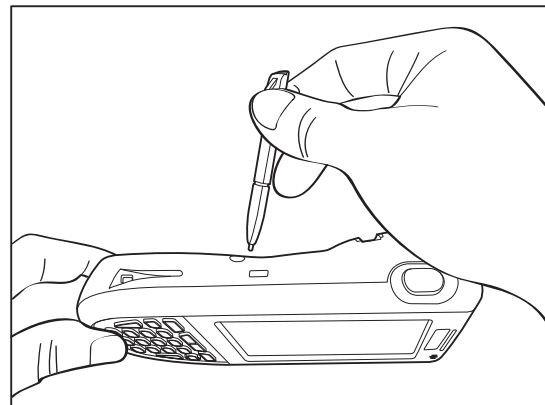
**NOTE:** Never perform a hard reset unless a soft reset does not correct your problem. When you perform your next ActiveSync operation, you can restore any data that you previously synchronized to your computer or you can restore data that you backed up to a storage card.

Follow these instructions to perform a clean boot.

1. Press and hold the Func key and Backspace key.



2. While holding the Func key and Backspace key, insert the tip of the stylus into the reset hold on the back of the PA600 II. Press and hold the reset button until you see the unitech splash logo screen. Wait 5 seconds and then release the Func key and Backspace keys.



**NOTE:** The system is returned to the default settings. All registry settings and all files (include the hidden files) are returned to their original factory defaults. And this will clean up storage memory.

## System Specifications

Processor / Memory	CPU	Intel PXA270 624MHz
	Memory	SDRAM: 128MB Flash ROM: 320MB
OS	Windows Mobile™ version 5.0	
Keypad	20-Key, including phone keys, alphanumeric keys, and function keys	
Display	240x320 QVGA, Color Transflective TFT, with Touch Screen & backlight	
Laser Barcode Scanner	Scan rate	104 scans/sec. ± 12 scans/sec. (bi-directional)
	Scan angle	47°±3° default / 35°±3° reduced
Input Device	Keypad Touch Screen Full Alphanumeric Software Keyboard Barcode Scanner	
Indicator	Led, Vibrator	
Communication	USB Host & Client 802.11b/g Bluetooth 2.0 + EDR Bluetooth supports Bluetooth Printer, Bluetooth Modem, Bluetooth ActiveSync eGPRS (Siemens MC75 Radio Module)	
Audio	MIC Speaker Headset connector Receiver	
Expansion Slot	SDIO slot supports SDHC up to 4G	
Power Source	Main	3.7V 2200mAh Li-ion battery pack
	Backup	One rechargeable Ni-MH backup battery
Enclosure	Weight	290g with battery
	Dimension	L149.5 X H26.6 X W85mm
Environmental	Operating temperature	-10° C~ 50° C (14° F to 122° F)
	Storage temperature	-20° C~ 60° C (-4° F to 140° F)
	Charging temperature	10° C~ 45° C
	Relative Humidity	5% ~ 95% (non-condensing)
	Drop test to Concrete	4 feet (1.2 meter)
	Environmental Sealing	IP64
Certification	CE, CB, FCC, BSMI, CCC, RoHS compliance	
Accessories	Battery Cradle Battery Charger Holster 4 slot Multi-Bay Extended Battery Vehicle Dock	
Software	Microsoft Visual Studio 2005 Microsoft Windows Mobile 5.0 SDK for Pocket PC unitech PA600 SDK Oracle Database Life Wavelink Avalanche MCL development suite	