

System Check_Head_750MHz

DUT:D750V3 - SN:1087

Communication System: ; Frequency: 750.000

Medium: HSL. Medium parameters used: $f= 750.000$ MHz; $\sigma= 0.925$ S/m; $\epsilon_r = 42.4$

Ambient Temperature: 23.1°C; Liquid Temperature: 22.7°C

DASY6 Configuration:

- Probe: EX3DV4 - SN7706; ConvF(10.97, 10.97, 10.97); Calibrated: 2023-01-26
- Sensor-Surface: 1.4 mm
- Electronics: DAE4 Sn1303; Calibrated: 2022-11-24
- Phantom: Twin-SAM V8.0 (30deg probe tilt); Serial: 2024
- Measurement Software: cDASY6 V6.6.0.13926

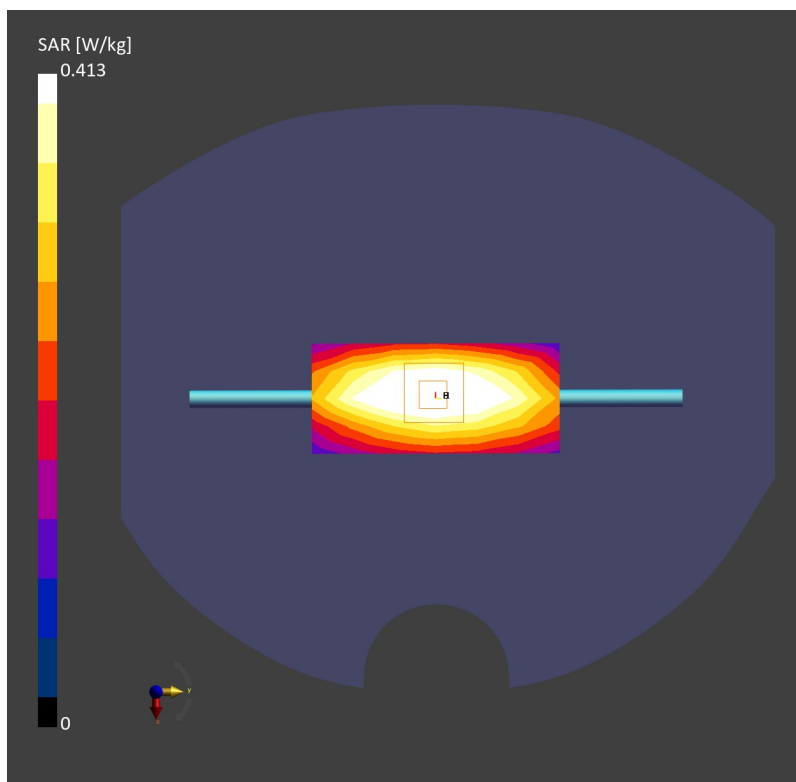
Area Scan (40.0 mm x 90.0 mm): Measurement Grid: 10.0 mm x 15.0 mm

SAR (1g) = 0.420 W/kg; SAR (10g) = 0.279 W/kg;

Zoom Scan (30.0 mm x 30.0 mm x 30.0 mm): Measurement Grid: 6.0 mm x 6.0 mm x 1.5 mm

Power Drift = 0.01 dB

SAR (1g) = 0.413 W/kg; SAR (10g) = 0.270 W/kg;



System Check_Head_835MHz

DUT:D835V2 - SN:4d298

Communication System: ; Frequency: 835.000

Medium: HSL. Medium parameters used: $f = 835.000$ MHz; $\sigma = 0.915$ S/m; $\epsilon_r = 41.3$

Ambient Temperature: 23.3°C; Liquid Temperature: 22.8°C

DASY6 Configuration:

- Probe: EX3DV4 - SN7706; ConvF(10.67, 10.67, 10.67); Calibrated: 2023-01-26
- Sensor-Surface: 1.4 mm
- Electronics: DAE4 Sn1303; Calibrated: 2022-11-24
- Phantom: Twin-SAM V8.0 (30deg probe tilt); Serial: 2024
- Measurement Software: cDASY6 V6.6.0.13926

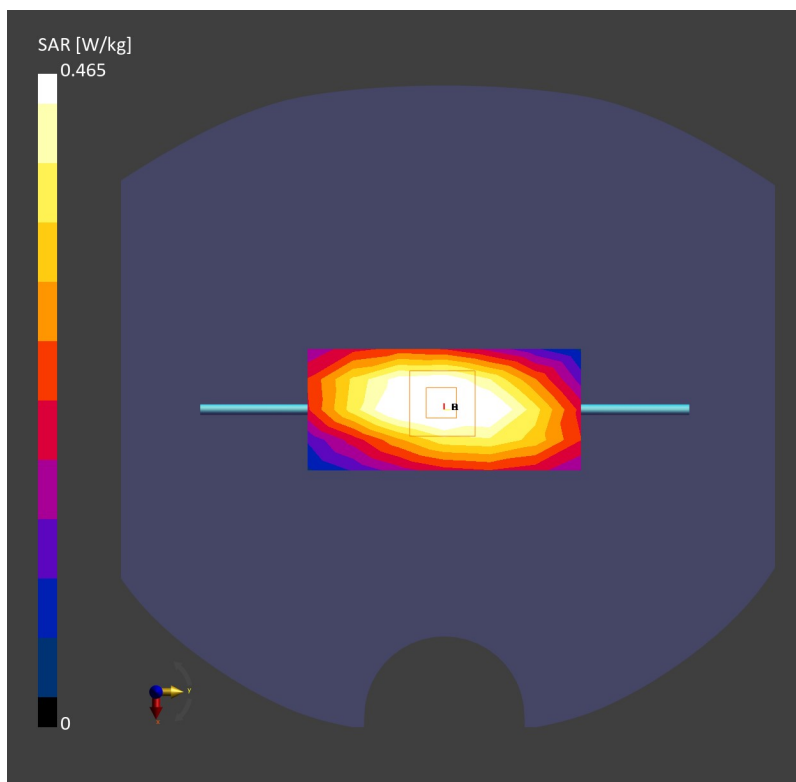
Area Scan (40.0 mm x 90.0 mm): Measurement Grid: 10.0 mm x 15.0 mm

SAR (1g) = 0.473 W/kg; SAR (10g) = 0.310 W/kg;

Zoom Scan (30.0 mm x 30.0 mm x 30.0 mm): Measurement Grid: 6.0 mm x 6.0 mm x 1.5 mm

Power Drift = 0.01 dB

SAR (1g) = 0.465 W/kg; SAR (10g) = 0.301 W/kg;



System Check_Head_1750MHz

DUT:D1750V2 - SN:1090

Communication System: ; Frequency: 1750.000

Medium: HSL. Medium parameters used: $f= 1750.000$ MHz; $\sigma= 1.38$ S/m; $\epsilon_r = 40.2$

Ambient Temperature: 23.1°C; Liquid Temperature: 22.7°C

DASY6 Configuration:

- Probe: EX3DV4 - SN7706; ConvF(9.31, 9.31, 9.31); Calibrated: 2023-01-26
- Sensor-Surface: 1.4 mm
- Electronics: DAE4 Sn1303; Calibrated: 2022-11-24
- Phantom: Twin-SAM V8.0 (30deg probe tilt); Serial: 2024
- Measurement Software: cDASY6 V6.6.0.13926

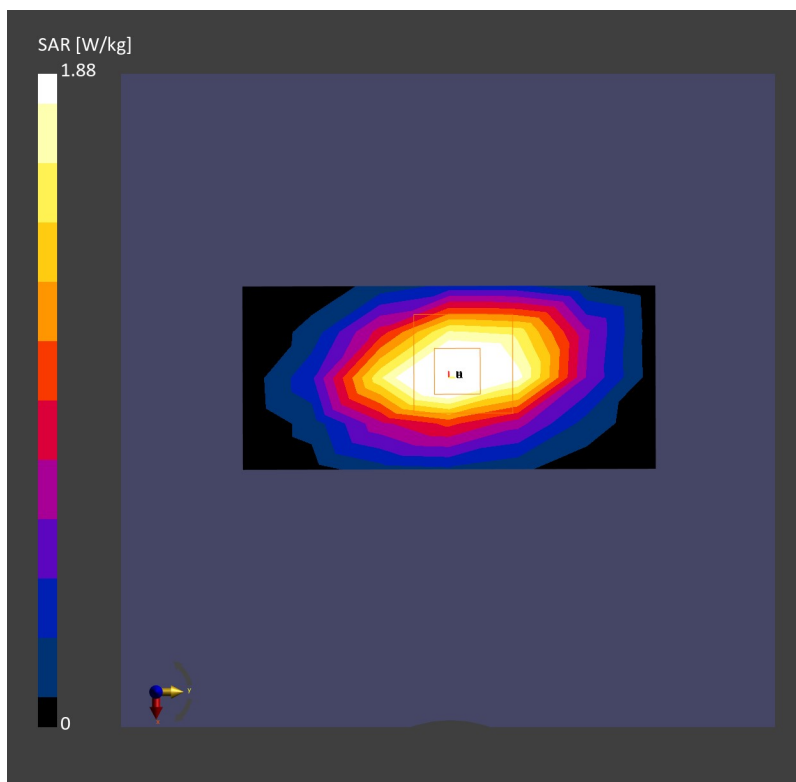
Area Scan (40.0 mm x 90.0 mm): Measurement Grid: 10.0 mm x 15.0 mm

SAR (1g) = 1.91 W/kg; SAR (10g) = 1.02 W/kg;

Zoom Scan (30.0 mm x 30.0 mm x 30.0 mm): Measurement Grid: 6.0 mm x 6.0 mm x 1.5 mm

Power Drift = -0.01 dB

SAR (1g) = 1.88 W/kg; SAR (10g) = 0.989 W/kg;



System Check_Head_1900MHz

DUT:D1900V2 - SN:5d118

Communication System: ; Frequency: 1900.000

Medium: HSL. Medium parameters used: $f= 1900.000$ MHz; $\sigma= 1.45$ S/m; $\epsilon_r = 39.9$

Ambient Temperature: 23.3°C; Liquid Temperature: 22.9°C

DASY6 Configuration:

- Probe: EX3DV4 - SN7706; ConvF(8.89, 8.89, 8.89); Calibrated: 2023-01-26
- Sensor-Surface: 1.4 mm
- Electronics: DAE4 Sn1303; Calibrated: 2022-11-24
- Phantom: Twin-SAM V8.0 (30deg probe tilt); Serial: 2024
- Measurement Software: cDASY6 V6.6.0.13926

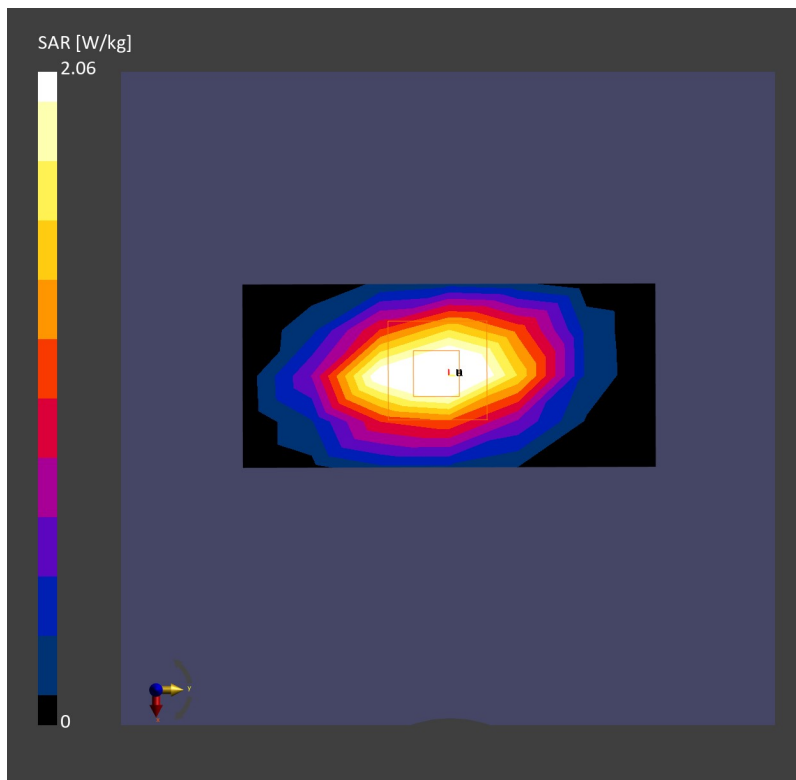
Area Scan (40.0 mm x 90.0 mm): Measurement Grid: 10.0 mm x 15.0 mm

SAR (1g) = 2.05 W/kg; SAR (10g) = 1.06 W/kg;

Zoom Scan (30.0 mm x 30.0 mm x 30.0 mm): Measurement Grid: 6.0 mm x 6.0 mm x 1.5 mm

Power Drift = 0.01 dB

SAR (1g) = 2.06 W/kg; SAR (10g) = 1.06 W/kg;



System Check_Head_2450MHz

DUT:D2450V2 - SN:1040

Communication System: ; Frequency: 2450.000

Medium: HSL. Medium parameters used: $f= 2450.000$ MHz; $\sigma= 1.85$ S/m; $\epsilon_r = 39.1$

Ambient Temperature: 23.2°C; Liquid Temperature: 22.6°C

DASY6 Configuration:

- Probe: EX3DV4 - SN7706; ConvF(8.38, 8.38, 8.38); Calibrated: 2023-01-26
- Sensor-Surface: 1.4 mm
- Electronics: DAE4 Sn1303; Calibrated: 2022-11-24
- Phantom: Twin-SAM V8.0 (30deg probe tilt); Serial: 2024
- Measurement Software: cDASY6 V6.6.0.13926

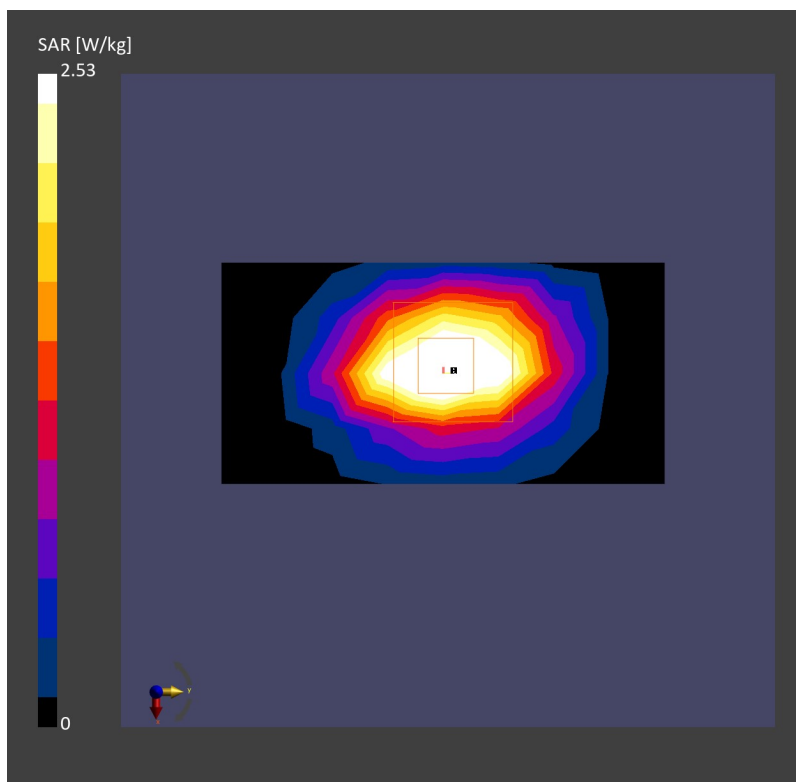
Area Scan (40.0 mm x 80.0 mm): Measurement Grid: 10.0 mm x 10.0 mm

SAR (1g) = 2.60 W/kg; SAR (10g) = 1.21 W/kg;

Zoom Scan (30.0 mm x 30.0 mm x 30.0 mm): Measurement Grid: 5.0 mm x 5.0 mm x 1.5 mm

Power Drift = 0.01 dB

SAR (1g) = 2.53 W/kg; SAR (10g) = 1.18 W/kg;



System Check_Head_2600MHz

DUT:D2600V2 - SN:1061

Communication System: ; Frequency: 2600.000

Medium: HSL. Medium parameters used: $f = 2600.000$ MHz; $\sigma = 1.93$ S/m; $\epsilon_r = 39.0$

Ambient Temperature: 23.3°C; Liquid Temperature: 22.6°C

DASY6 Configuration:

- Probe: EX3DV4 - SN7706; ConvF(8.1, 8.1, 8.1); Calibrated: 2023-01-26
- Sensor-Surface: 1.4 mm
- Electronics: DAE4 Sn1303; Calibrated: 2022-11-24
- Phantom: Twin-SAM V8.0 (30deg probe tilt); Serial: 2024
- Measurement Software: cDASY6 V6.6.0.13926

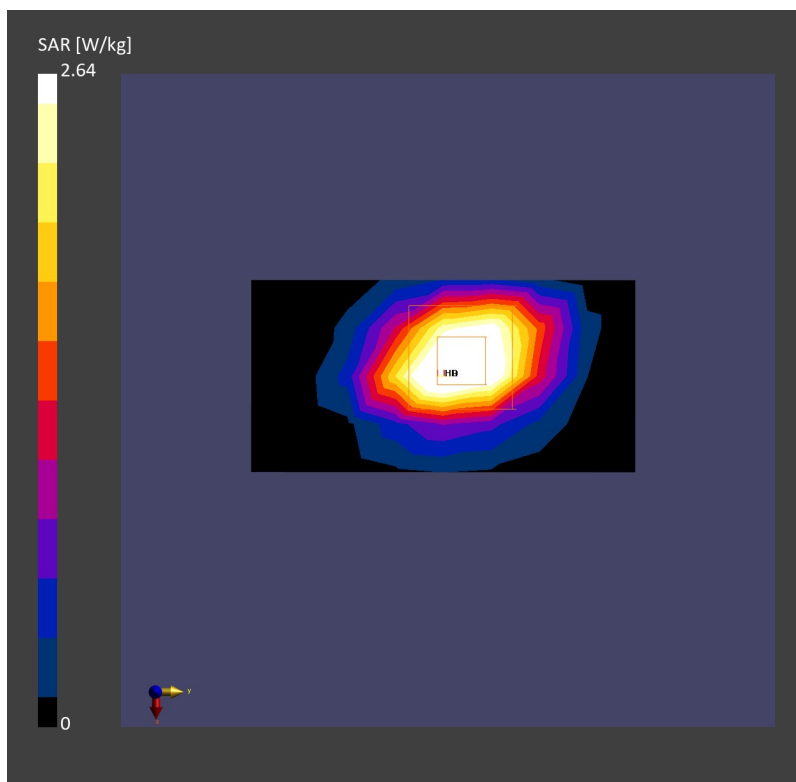
Area Scan (40.0 mm x 80.0 mm): Measurement Grid: 10.0 mm x 10.0 mm

SAR (1g) = 2.69 W/kg; SAR (10g) = 1.24 W/kg;

Zoom Scan (30.0 mm x 30.0 mm x 30.0 mm): Measurement Grid: 5.0 mm x 5.0 mm x 1.5 mm

Power Drift = 0.01 dB

SAR (1g) = 2.64 W/kg; SAR (10g) = 1.19 W/kg;



System Check_Head_3500MHz

DUT:D3500V2 - SN:1037

Communication System: ; Frequency: 3500.000

Medium: HSL. Medium parameters used: $f= 3500.000$ MHz; $\sigma= 2.80$ S/m; $\epsilon_r = 39.0$

Ambient Temperature: 23.3°C; Liquid Temperature: 22.7°C

DASY6 Configuration:

- Probe: EX3DV4 - SN7706; ConvF(7.68, 7.68, 7.68); Calibrated: 2023-01-26
- Sensor-Surface: 1.4 mm
- Electronics: DAE4 Sn1303; Calibrated: 2022-11-24
- Phantom: Twin-SAM V8.0 (30deg probe tilt); Serial: 2024
- Measurement Software: cDASY6 V6.6.0.13926

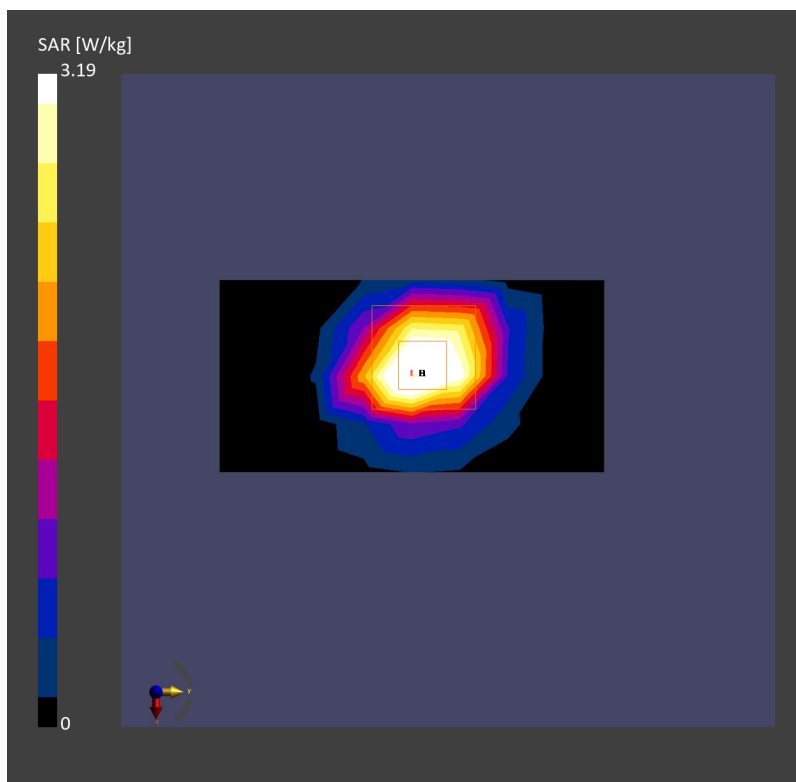
Area Scan (40.0 mm x 80.0 mm): Measurement Grid: 10.0 mm x 10.0 mm

SAR (1g) = 3.13 W/kg; SAR (10g) = 1.22 W/kg;

Zoom Scan (28.0 mm x 28.0 mm x 28.0 mm): Measurement Grid: 4.0 mm x 4.0 mm x 1.4 mm

Power Drift = -0.02 dB

SAR (1g) = 3.19 W/kg; SAR (10g) = 1.20 W/kg;



System Check_Head_3700MHz

DUT:D3700V2 - SN:1008

Communication System: ; Frequency: 3700.000

Medium: HSL. Medium parameters used: $f= 3700.000$ MHz; $\sigma= 2.98$ S/m; $\epsilon_r = 38.6$

Ambient Temperature: 23.3°C; Liquid Temperature: 22.7°C

DASY6 Configuration:

- Probe: EX3DV4 - SN7706; ConvF(7.61, 7.61, 7.61); Calibrated: 2023-01-26
- Sensor-Surface: 1.4 mm
- Electronics: DAE4 Sn1303; Calibrated: 2022-11-24
- Phantom: Twin-SAM V8.0 (30deg probe tilt); Serial: 2024
- Measurement Software: cDASY6 V6.6.0.13926

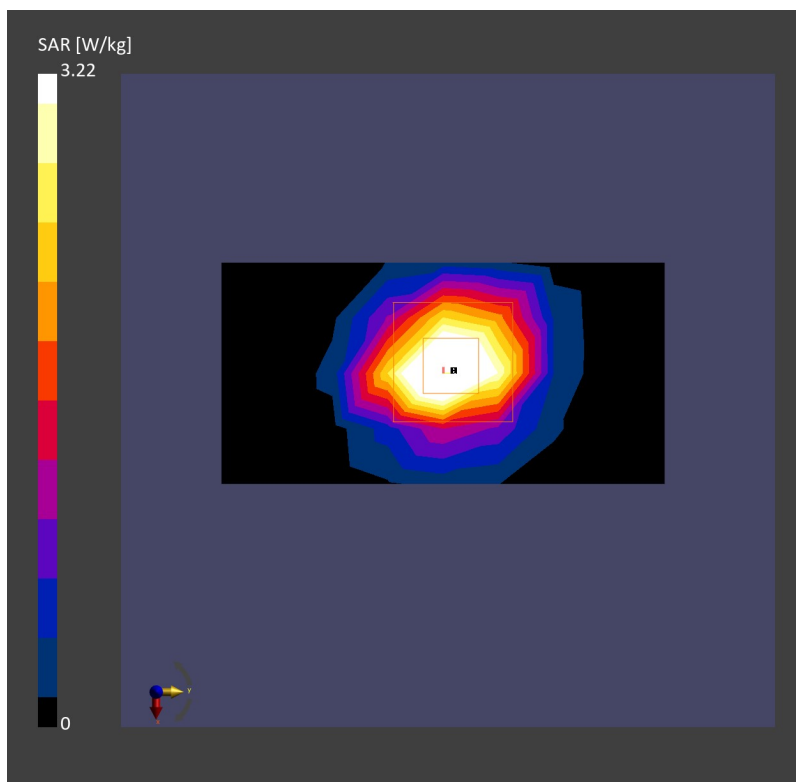
Area Scan (40.0 mm x 80.0 mm): Measurement Grid: 10.0 mm x 10.0 mm

SAR (1g) = 3.20 W/kg; SAR (10g) = 1.19 W/kg;

Zoom Scan (28.0 mm x 28.0 mm x 28.0 mm): Measurement Grid: 4.0 mm x 4.0 mm x 1.4 mm

Power Drift = -0.02 dB

SAR (1g) = 3.22 W/kg; SAR (10g) = 1.19 W/kg;



System Check_Head_3900MHz

DUT:D3900V2 - SN:1048

Communication System: ; Frequency: 3900.000

Medium: HSL. Medium parameters used: $f= 3900.000$ MHz; $\sigma= 3.25$ S/m; $\epsilon_r = 37.8$

Ambient Temperature: 23.1°C; Liquid Temperature: 22.9°C

DASY6 Configuration:

- Probe: EX3DV4 - SN7706; ConvF(7.31, 7.31, 7.31); Calibrated: 2023-01-26
- Sensor-Surface: 1.4 mm
- Electronics: DAE4 Sn1303; Calibrated: 2022-11-24
- Phantom: Twin-SAM V8.0 (30deg probe tilt); Serial: 2024
- Measurement Software: cDASY6 V6.6.0.13926

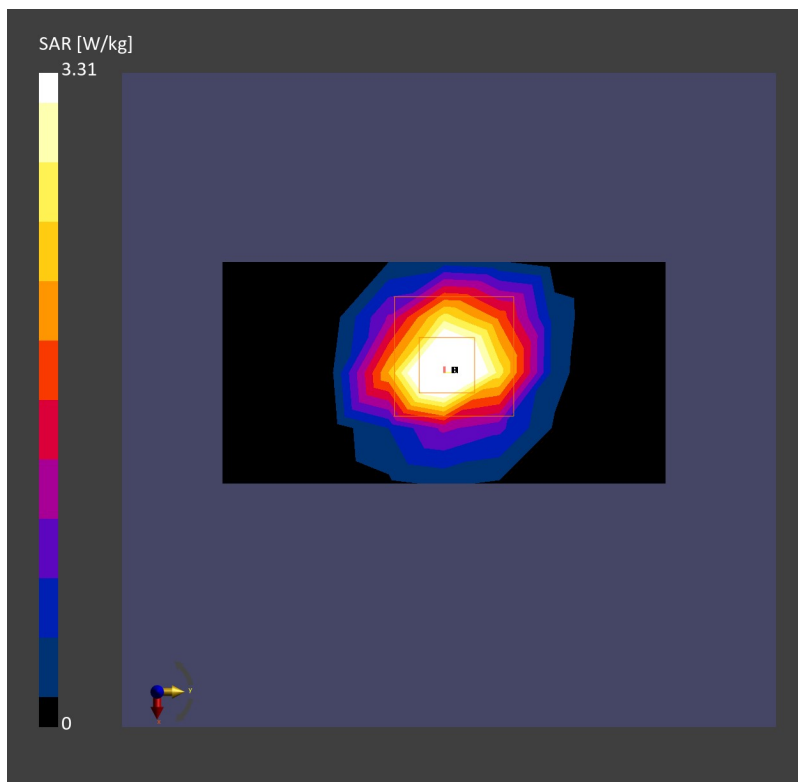
Area Scan (40.0 mm x 80.0 mm): Measurement Grid: 10.0 mm x 10.0 mm

SAR (1g) = 3.16 W/kg; SAR (10g) = 1.13 W/kg;

Zoom Scan (28.0 mm x 28.0 mm x 28.0 mm): Measurement Grid: 4.0 mm x 4.0 mm x 1.4 mm

Power Drift = -0.03 dB

SAR (1g) = 3.31 W/kg; SAR (10g) = 1.17 W/kg;



System Check_Head_5250MHz

DUT:D5GHzV2 - SN:1113

Communication System: ; Frequency: 5250.000

Medium: HSL. Medium parameters used: $f= 5250.000$ MHz; $\sigma= 4.56$ S/m; $\epsilon_r = 35.0$

Ambient Temperature: 23.3°C; Liquid Temperature: 22.9°C

DASY6 Configuration:

- Probe: EX3DV4 - SN7706; ConvF(6.18, 6.18, 6.18); Calibrated: 2023-01-26
- Sensor-Surface: 1.4 mm
- Electronics: DAE4 Sn1303; Calibrated: 2022-11-24
- Phantom: Twin-SAM V8.0 (30deg probe tilt); Serial: 2024
- Measurement Software: cDASY6 V6.6.0.13926

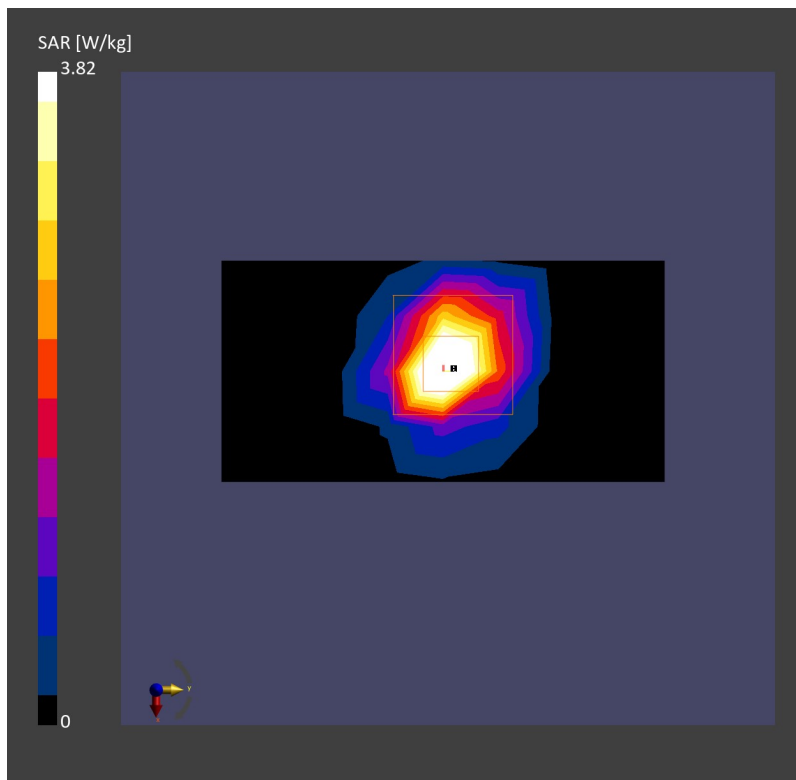
Area Scan (40.0 mm x 80.0 mm): Measurement Grid: 10.0 mm x 10.0 mm

SAR (1g) = 3.37 W/kg; SAR (10g) = 0.987 W/kg;

Zoom Scan (22.0 mm x 22.0 mm x 22.0 mm): Measurement Grid: 4.0 mm x 4.0 mm x 1.4 mm

Power Drift = -0.03 dB

SAR (1g) = 3.82 W/kg; SAR (10g) = 1.09 W/kg;



System Check_Head_5600MHz

DUT:D5GHzV2 - SN:1113

Communication System: ; Frequency: 5600.000

Medium: HSL. Medium parameters used: $f= 5600.000$ MHz; $\sigma= 4.95$ S/m; $\epsilon_r = 34.4$

Ambient Temperature: 23.3°C; Liquid Temperature: 22.9°C

DASY6 Configuration:

- Probe: EX3DV4 - SN7706; ConvF(5.39, 5.39, 5.39); Calibrated: 2023-01-26
- Sensor-Surface: 1.4 mm
- Electronics: DAE4 Sn1303; Calibrated: 2022-11-24
- Phantom: Twin-SAM V8.0 (30deg probe tilt); Serial: 2024
- Measurement Software: cDASY6 V6.6.0.13926

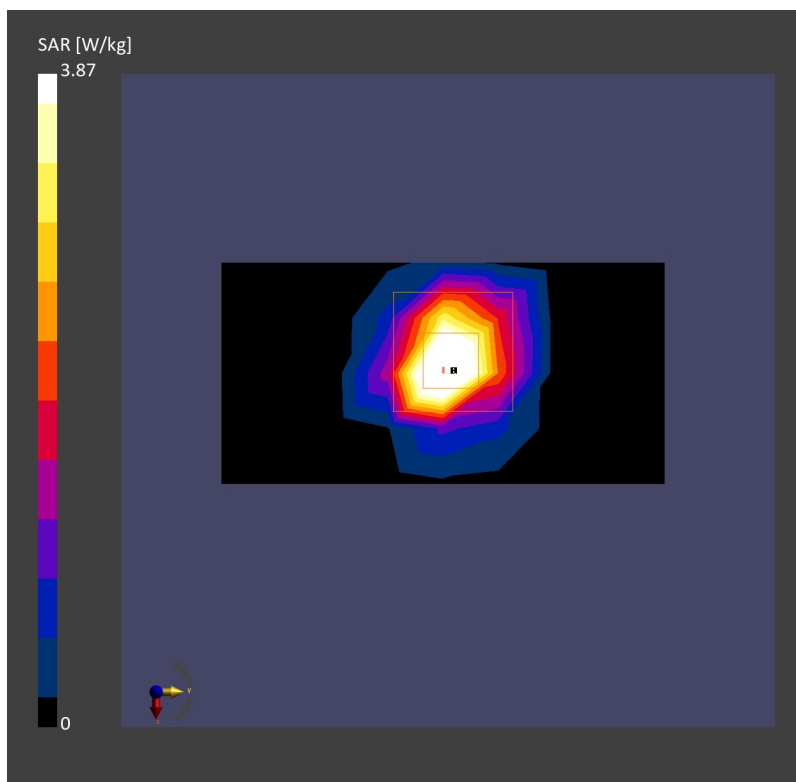
Area Scan (40.0 mm x 80.0 mm): Measurement Grid: 10.0 mm x 10.0 mm

SAR (1g) = 3.63 W/kg; SAR (10g) = 1.06 W/kg;

Zoom Scan (22.0 mm x 22.0 mm x 22.0 mm): Measurement Grid: 4.0 mm x 4.0 mm x 1.4 mm

Power Drift = 0.05 dB

SAR (1g) = 3.87 W/kg; SAR (10g) = 1.11 W/kg;



System Check_Head_5750MHz

DUT:D5GHzV2 - SN:1113

Communication System: ; Frequency: 5750.000

Medium: HSL. Medium parameters used: $f= 5750.000$ MHz; $\sigma= 5.12$ S/m; $\epsilon_r = 34.1$

Ambient Temperature: 23.3°C; Liquid Temperature: 22.9°C

DASY6 Configuration:

- Probe: EX3DV4 - SN7706; ConvF(5.57, 5.57, 5.57); Calibrated: 2023-01-26
- Sensor-Surface: 1.4 mm
- Electronics: DAE4 Sn1303; Calibrated: 2022-11-24
- Phantom: Twin-SAM V8.0 (30deg probe tilt); Serial: 2024
- Measurement Software: cDASY6 V6.6.0.13926

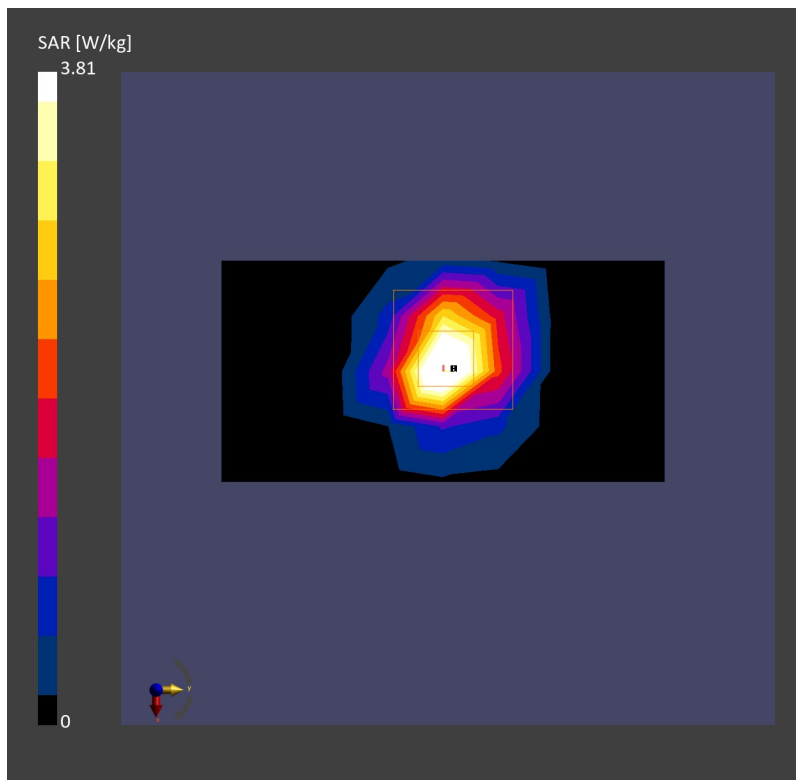
Area Scan (40.0 mm x 80.0 mm): Measurement Grid: 10.0 mm x 10.0 mm

SAR (1g) = 3.26 W/kg; SAR (10g) = 0.960 W/kg;

Zoom Scan (22.0 mm x 22.0 mm x 22.0 mm): Measurement Grid: 4.0 mm x 4.0 mm x 1.4 mm

Power Drift = -0.01 dB

SAR (1g) = 3.81 W/kg; SAR (10g) = 1.09 W/kg;



System Check_Head_750MHz

DUT:D750V3 - SN:1087

Communication System: ; Frequency: 750.000

Medium: HSL. Medium parameters used: $f= 750.000$ MHz; $\sigma= 0.905$ S/m; $\epsilon_r = 42.7$

Ambient Temperature: 23.2°C; Liquid Temperature: 22.7°C

DASY6 Configuration:

- Probe: EX3DV4 - SN7706; ConvF(10.97, 10.97, 10.97); Calibrated: 2023-01-26
- Sensor-Surface: 1.4 mm
- Electronics: DAE4 Sn1303; Calibrated: 2022-11-24
- Phantom: Twin-SAM V8.0 (30deg probe tilt); Serial: 2024
- Measurement Software: cDASY6 V6.6.0.13926

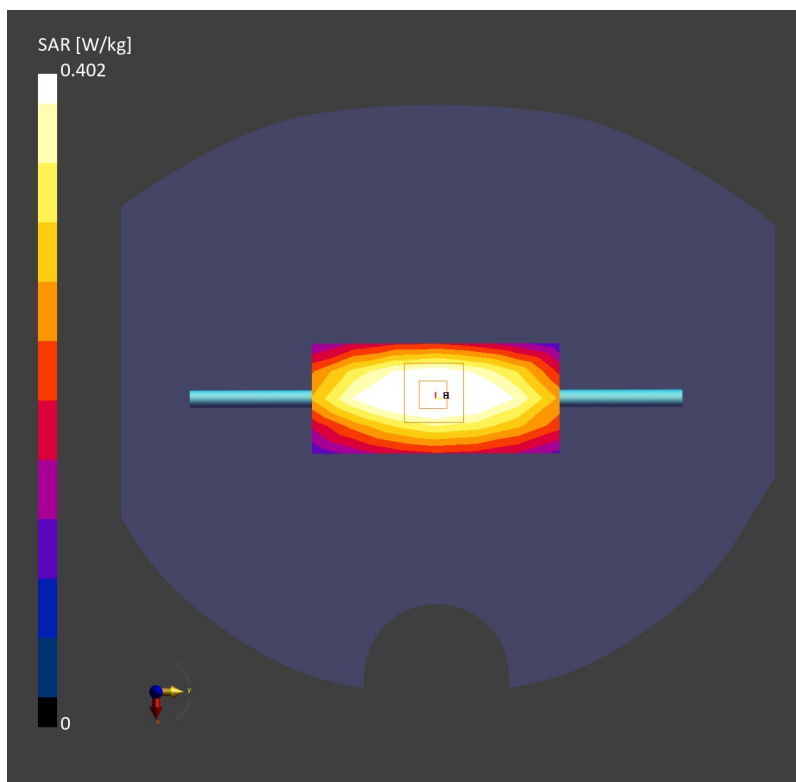
Area Scan (40.0 mm x 90.0 mm): Measurement Grid: 10.0 mm x 15.0 mm

SAR (1g) = 0.410 W/kg; SAR (10g) = 0.272 W/kg;

Zoom Scan (30.0 mm x 30.0 mm x 30.0 mm): Measurement Grid: 6.0 mm x 6.0 mm x 1.5 mm

Power Drift = 0.01 dB

SAR (1g) = 0.402 W/kg; SAR (10g) = 0.263 W/kg;



System Check_Head_835MHz

DUT:D835V2 - SN:4d298

Communication System: ; Frequency: 835.000

Medium: HSL. Medium parameters used: $f = 835.000$ MHz; $\sigma = 0.924$ S/m; $\epsilon_r = 41.4$

Ambient Temperature: 23.1°C; Liquid Temperature: 22.8°C

DASY6 Configuration:

- Probe: EX3DV4 - SN7706; ConvF(10.67, 10.67, 10.67); Calibrated: 2023-01-26
- Sensor-Surface: 1.4 mm
- Electronics: DAE4 Sn1303; Calibrated: 2022-11-24
- Phantom: Twin-SAM V8.0 (30deg probe tilt); Serial: 2024
- Measurement Software: cDASY6 V6.6.0.13926

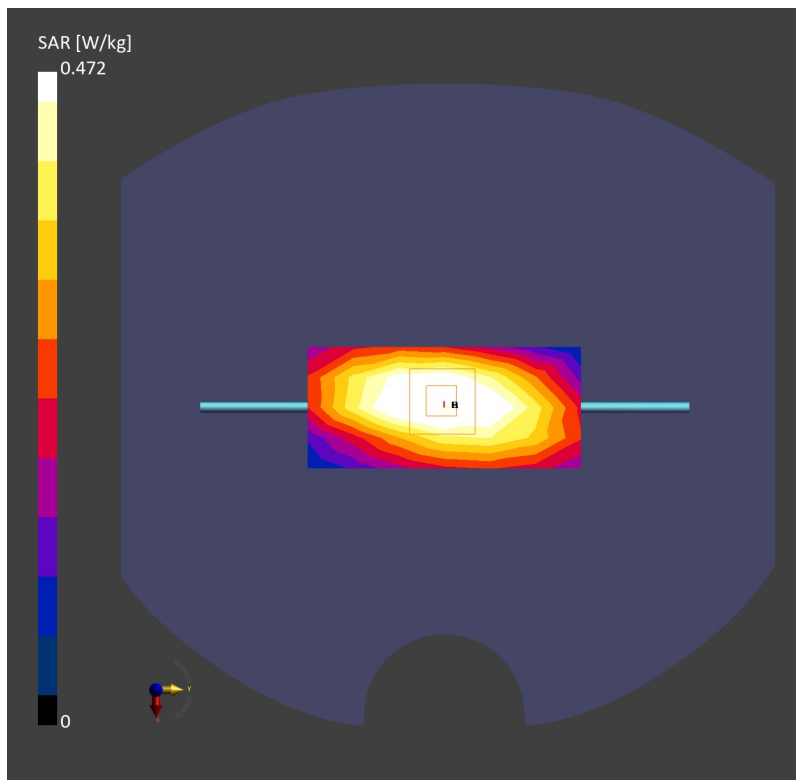
Area Scan (40.0 mm x 90.0 mm): Measurement Grid: 10.0 mm x 15.0 mm

SAR (1g) = 0.487 W/kg; SAR (10g) = 0.319 W/kg;

Zoom Scan (30.0 mm x 30.0 mm x 30.0 mm): Measurement Grid: 6.0 mm x 6.0 mm x 1.5 mm

Power Drift = -0.01 dB

SAR (1g) = 0.472 W/kg; SAR (10g) = 0.305 W/kg;



System Check_Head_1750MHz

DUT:D1750V2 - SN:1090

Communication System: ; Frequency: 1750.000

Medium: HSL. Medium parameters used: $f= 1750.000$ MHz; $\sigma= 1.35$ S/m; $\epsilon_r = 40.1$

Ambient Temperature: 23.1°C; Liquid Temperature: 22.7°C

DASY6 Configuration:

- Probe: EX3DV4 - SN7706; ConvF(9.31, 9.31, 9.31); Calibrated: 2023-01-26
- Sensor-Surface: 1.4 mm
- Electronics: DAE4 Sn1303; Calibrated: 2022-11-24
- Phantom: Twin-SAM V8.0 (30deg probe tilt); Serial: 2024
- Measurement Software: cDASY6 V6.6.0.13926

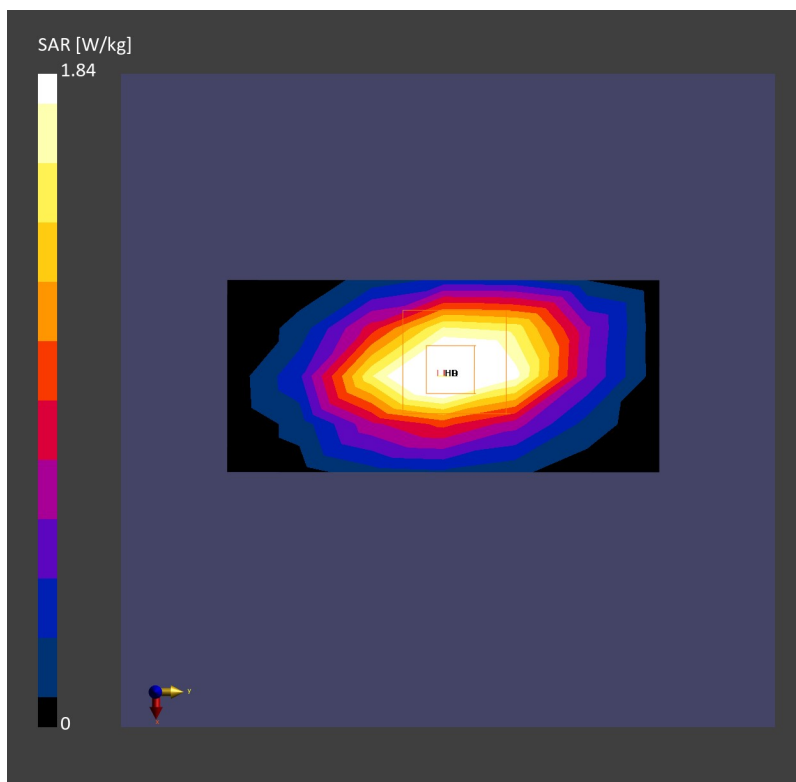
Area Scan (40.0 mm x 90.0 mm): Measurement Grid: 10.0 mm x 15.0 mm

SAR (1g) = 1.87 W/kg; SAR (10g) = 1.00 W/kg;

Zoom Scan (30.0 mm x 30.0 mm x 30.0 mm): Measurement Grid: 6.0 mm x 6.0 mm x 1.5 mm

Power Drift = 0.02 dB

SAR (1g) = 1.84 W/kg; SAR (10g) = 0.968 W/kg;



System Check_Head_1900MHz

DUT:D1900V2 - SN:5d118

Communication System: ; Frequency: 1900.000

Medium: HSL. Medium parameters used: $f= 1900.000$ MHz; $\sigma= 1.43$ S/m; $\epsilon_r = 39.8$

Ambient Temperature: 23.2°C; Liquid Temperature: 22.9°C

DASY6 Configuration:

- Probe: EX3DV4 - SN7706; ConvF(8.89, 8.89, 8.89); Calibrated: 2023-01-26
- Sensor-Surface: 1.4 mm
- Electronics: DAE4 Sn1303; Calibrated: 2022-11-24
- Phantom: Twin-SAM V8.0 (30deg probe tilt); Serial: 2024
- Measurement Software: cDASY6 V6.6.0.13926

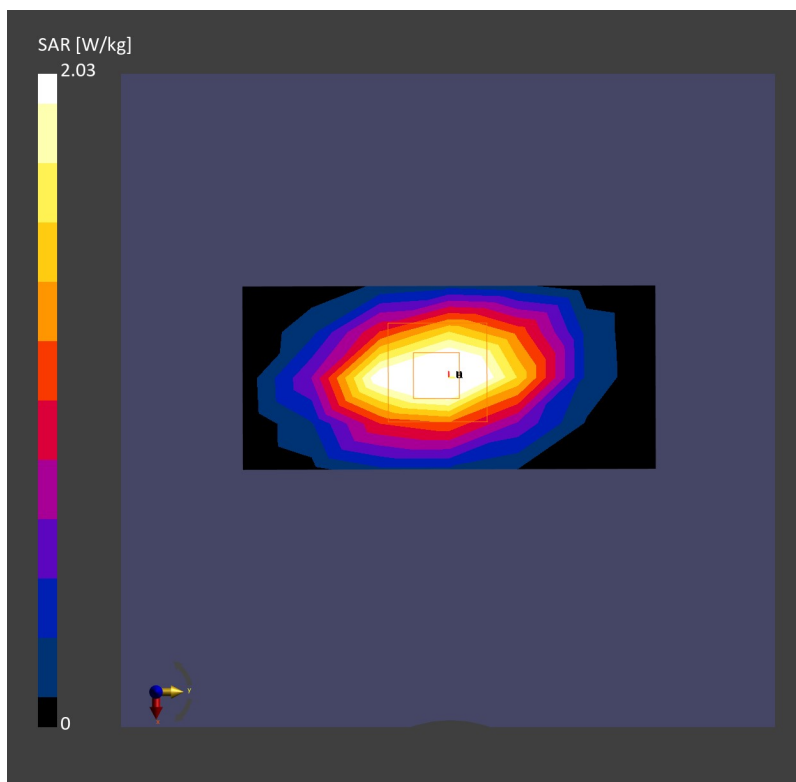
Area Scan (40.0 mm x 90.0 mm): Measurement Grid: 10.0 mm x 15.0 mm

SAR (1g) = 2.02 W/kg; SAR (10g) = 1.05 W/kg;

Zoom Scan (30.0 mm x 30.0 mm x 30.0 mm): Measurement Grid: 6.0 mm x 6.0 mm x 1.5 mm

Power Drift = 0.02 dB

SAR (1g) = 2.03 W/kg; SAR (10g) = 1.04 W/kg;



System Check_Head_2450MHz

DUT:D2450V2 - SN:1040

Communication System: ; Frequency: 2450.000

Medium: HSL. Medium parameters used: $f= 2450.000$ MHz; $\sigma= 1.86$ S/m; $\epsilon_r = 38.4$

Ambient Temperature: 23.2°C; Liquid Temperature: 22.6°C

DASY6 Configuration:

- Probe: EX3DV4 - SN7706; ConvF(8.38, 8.38, 8.38); Calibrated: 2023-01-26
- Sensor-Surface: 1.4 mm
- Electronics: DAE4 Sn1303; Calibrated: 2022-11-24
- Phantom: Twin-SAM V8.0 (30deg probe tilt); Serial: 2024
- Measurement Software: cDASY6 V6.6.0.13926

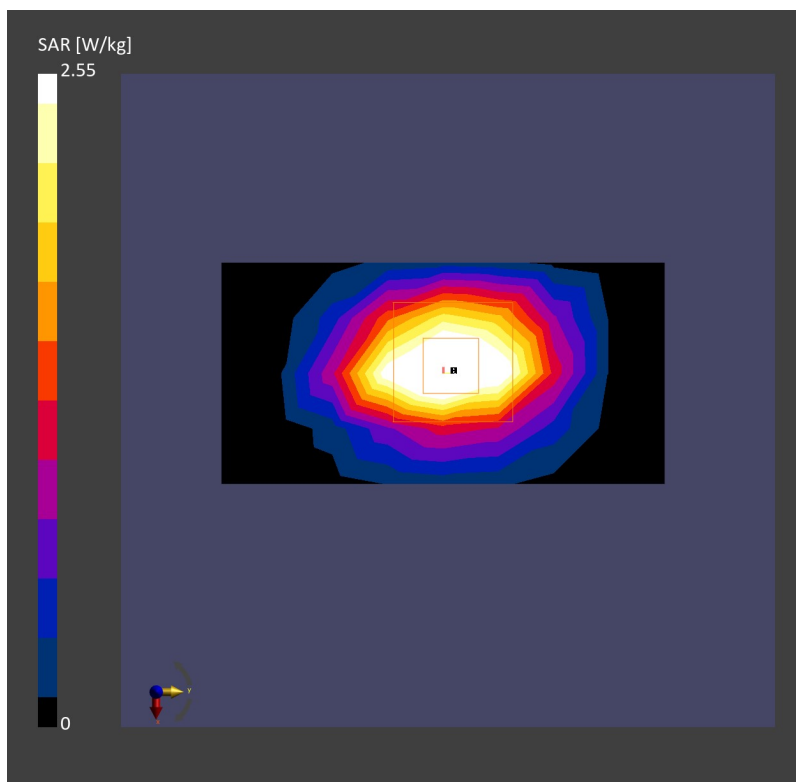
Area Scan (40.0 mm x 80.0 mm): Measurement Grid: 10.0 mm x 10.0 mm

SAR (1g) = 2.61 W/kg; SAR (10g) = 1.21 W/kg;

Zoom Scan (30.0 mm x 30.0 mm x 30.0 mm): Measurement Grid: 5.0 mm x 5.0 mm x 1.5 mm

Power Drift = -0.01 dB

SAR (1g) = 2.55 W/kg; SAR (10g) = 1.19 W/kg;



System Check_Head_2600MHz

DUT:D2600V2 - SN:1061

Communication System: ; Frequency: 2600.000

Medium: HSL. Medium parameters used: $f = 2600.000$ MHz; $\sigma = 1.96$ S/m; $\epsilon_r = 40.4$

Ambient Temperature: 23.2°C; Liquid Temperature: 22.6°C

DASY6 Configuration:

- Probe: EX3DV4 - SN7706; ConvF(8.1, 8.1, 8.1); Calibrated: 2023-01-26
- Sensor-Surface: 1.4 mm
- Electronics: DAE4 Sn1303; Calibrated: 2022-11-24
- Phantom: Twin-SAM V8.0 (30deg probe tilt); Serial: 2024
- Measurement Software: cDASY6 V6.6.0.13926

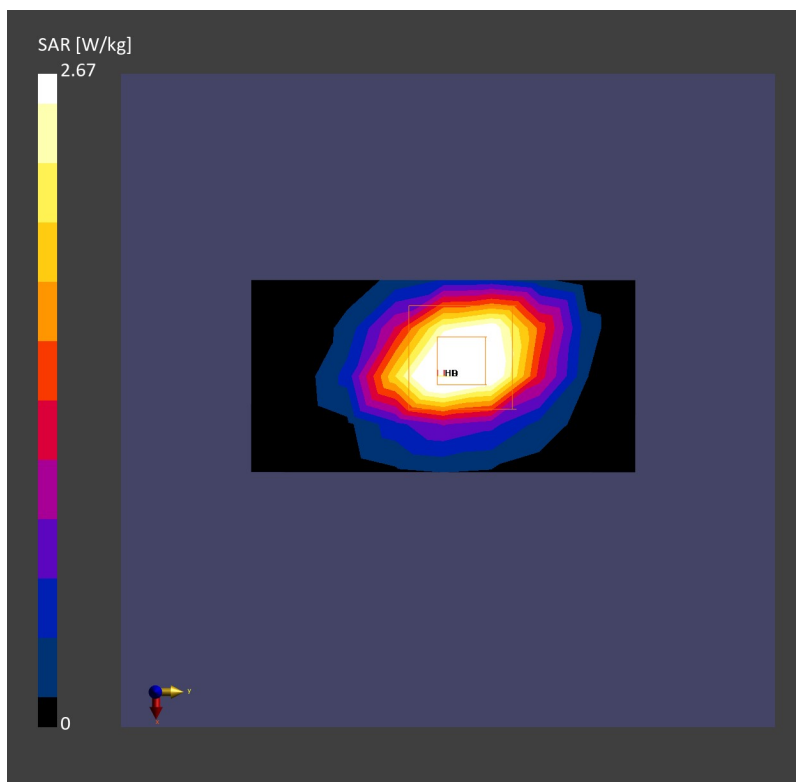
Area Scan (40.0 mm x 80.0 mm): Measurement Grid: 10.0 mm x 10.0 mm

SAR (1g) = 2.72 W/kg; SAR (10g) = 1.25 W/kg;

Zoom Scan (30.0 mm x 30.0 mm x 30.0 mm): Measurement Grid: 5.0 mm x 5.0 mm x 1.5 mm

Power Drift = -0.02 dB

SAR (1g) = 2.67 W/kg; SAR (10g) = 1.20 W/kg;



System Check_Head_3500MHz

DUT:D3500V2 - SN:1037

Communication System: ; Frequency: 3500.000

Medium: HSL. Medium parameters used: $f= 3500.000$ MHz; $\sigma= 2.88$ S/m; $\epsilon_r = 38.5$

Ambient Temperature: 23.3°C; Liquid Temperature: 22.7°C

DASY6 Configuration:

- Probe: EX3DV4 - SN7706; ConvF(7.68, 7.68, 7.68); Calibrated: 2023-01-26
- Sensor-Surface: 1.4 mm
- Electronics: DAE4 Sn1303; Calibrated: 2022-11-24
- Phantom: Twin-SAM V8.0 (30deg probe tilt); Serial: 2024
- Measurement Software: cDASY6 V6.6.0.13926

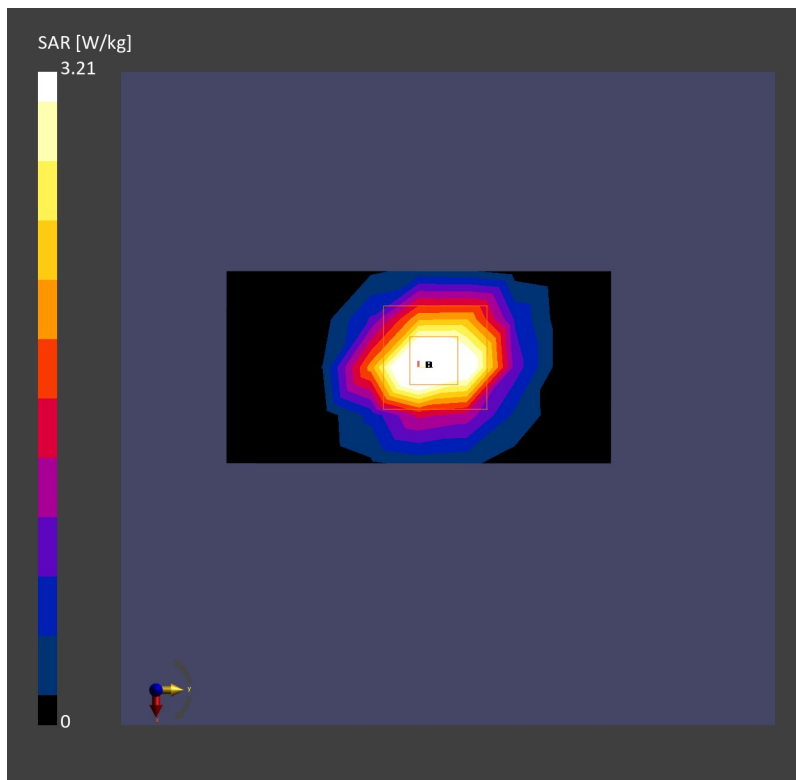
Area Scan (40.0 mm x 80.0 mm): Measurement Grid: 10.0 mm x 10.0 mm

SAR (1g) = 3.18 W/kg; SAR (10g) = 1.22 W/kg;

Zoom Scan (28.0 mm x 28.0 mm x 28.0 mm): Measurement Grid: 4.0 mm x 4.0 mm x 1.4 mm

Power Drift = 0.01 dB

SAR (1g) = 3.21 W/kg; SAR (10g) = 1.23 W/kg;



System Check_Head_3700MHz

DUT:D3700V2 - SN:1008

Communication System: ; Frequency: 3700.000

Medium: HSL. Medium parameters used: $f= 3700.000$ MHz; $\sigma= 3.08$ S/m; $\epsilon_r = 38.0$

Ambient Temperature: 23.2°C; Liquid Temperature: 22.7°C

DASY6 Configuration:

- Probe: EX3DV4 - SN7706; ConvF(7.61, 7.61, 7.61); Calibrated: 2023-01-26
- Sensor-Surface: 1.4 mm
- Electronics: DAE4 Sn1303; Calibrated: 2022-11-24
- Phantom: Twin-SAM V8.0 (30deg probe tilt); Serial: 2024
- Measurement Software: cDASY6 V6.6.0.13926

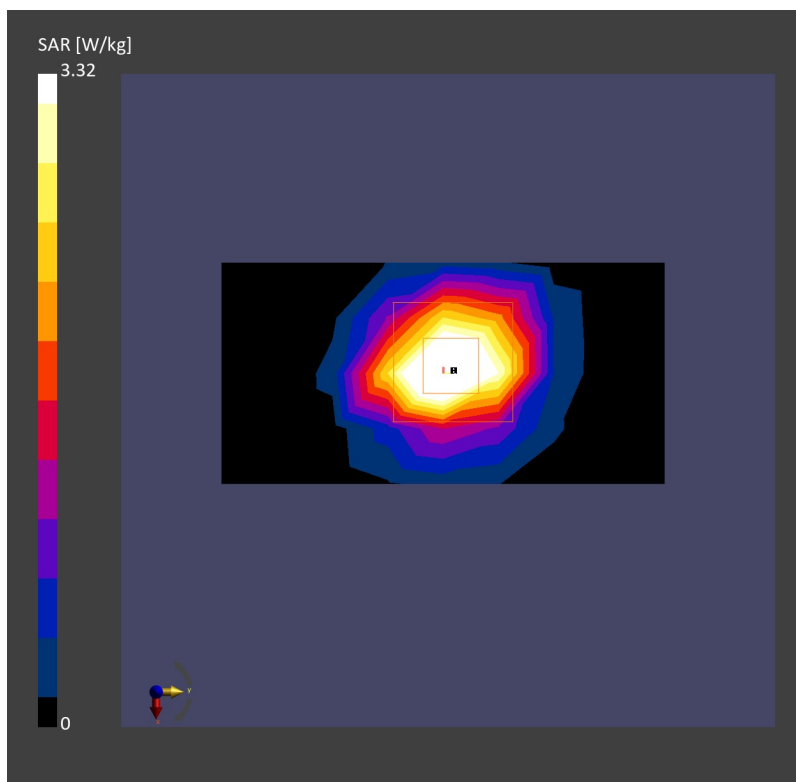
Area Scan (40.0 mm x 80.0 mm): Measurement Grid: 10.0 mm x 10.0 mm

SAR (1g) = 3.32 W/kg; SAR (10g) = 1.23 W/kg;

Zoom Scan (28.0 mm x 28.0 mm x 28.0 mm): Measurement Grid: 4.0 mm x 4.0 mm x 1.4 mm

Power Drift = -0.01 dB

SAR (1g) = 3.32 W/kg; SAR (10g) = 1.23 W/kg;



System Check_Head_3900MHz

DUT:D3900V2 - SN:1048

Communication System: ; Frequency: 3900.000

Medium: HSL. Medium parameters used: $f= 3900.000$ MHz; $\sigma= 3.28$ S/m; $\epsilon_r = 37.6$

Ambient Temperature: 23.1°C; Liquid Temperature: 22.9°C

DASY6 Configuration:

- Probe: EX3DV4 - SN7706; ConvF(7.31, 7.31, 7.31); Calibrated: 2023-01-26
- Sensor-Surface: 1.4 mm
- Electronics: DAE4 Sn1303; Calibrated: 2022-11-24
- Phantom: Twin-SAM V8.0 (30deg probe tilt); Serial: 2024
- Measurement Software: cDASY6 V6.6.0.13926

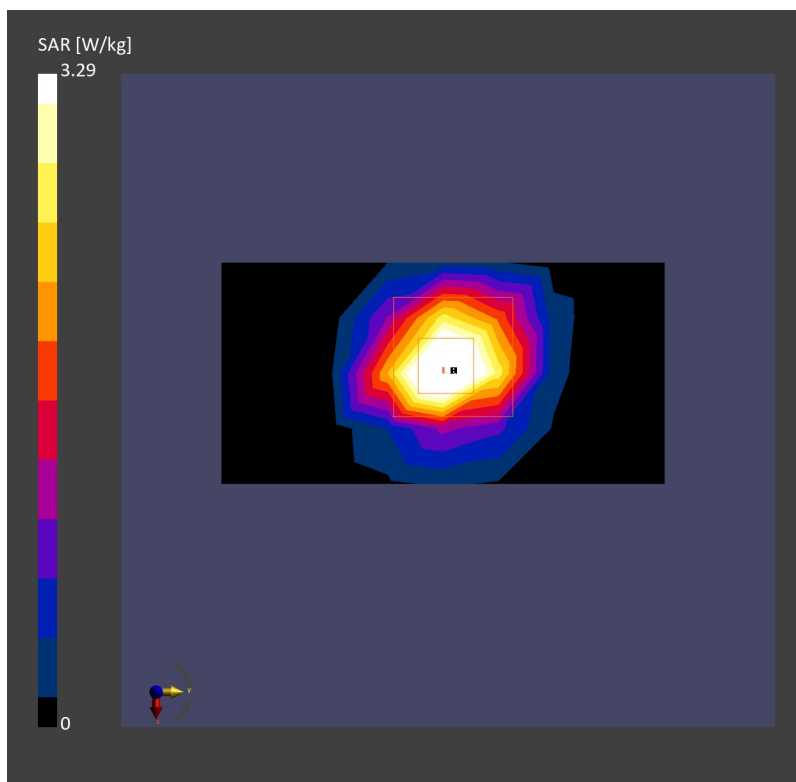
Area Scan (40.0 mm x 80.0 mm): Measurement Grid: 10.0 mm x 10.0 mm

SAR (1g) = 3.16 W/kg; SAR (10g) = 1.13 W/kg;

Zoom Scan (28.0 mm x 28.0 mm x 28.0 mm): Measurement Grid: 4.0 mm x 4.0 mm x 1.4 mm

Power Drift = -0.02 dB

SAR (1g) = 3.29 W/kg; SAR (10g) = 1.18 W/kg;



System Check_Head_5250MHz

DUT:D5GHzV2 - SN:1113

Communication System: ; Frequency: 5250.000

Medium: HSL. Medium parameters used: $f= 5250.000$ MHz; $\sigma= 4.57$ S/m; $\epsilon_r = 35.5$

Ambient Temperature: 23.2°C; Liquid Temperature: 22.8°C

DASY6 Configuration:

- Probe: EX3DV4 - SN7706; ConvF(6.18, 6.18, 6.18); Calibrated: 2023-01-26
- Sensor-Surface: 1.4 mm
- Electronics: DAE4 Sn1303; Calibrated: 2022-11-24
- Phantom: Twin-SAM V8.0 (30deg probe tilt); Serial: 2024
- Measurement Software: cDASY6 V6.6.0.13926

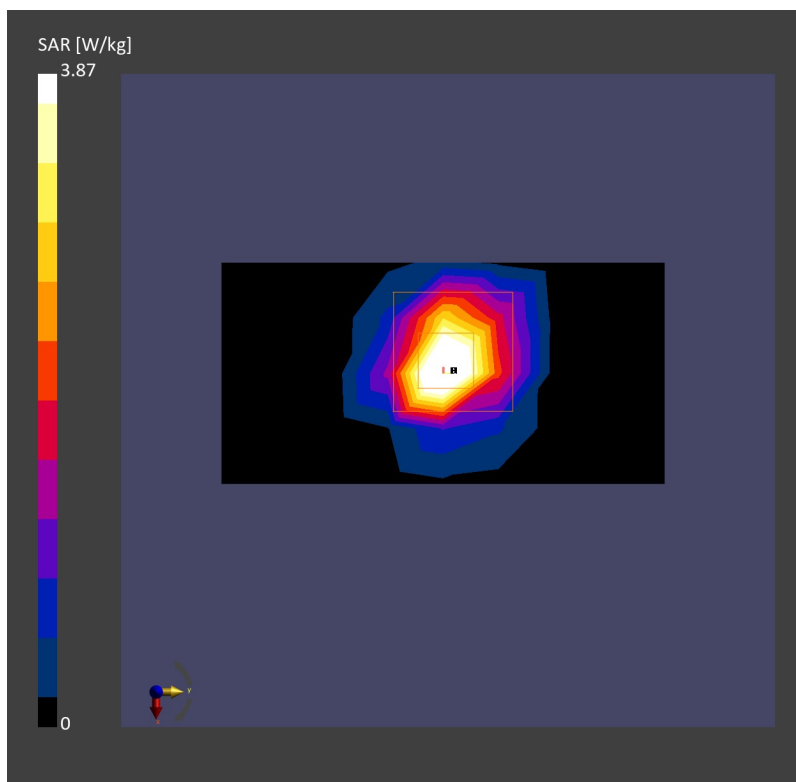
Area Scan (40.0 mm x 80.0 mm): Measurement Grid: 10.0 mm x 10.0 mm

SAR (1g) = 3.30 W/kg; SAR (10g) = 0.977 W/kg;

Zoom Scan (22.0 mm x 22.0 mm x 22.0 mm): Measurement Grid: 4.0 mm x 4.0 mm x 1.4 mm

Power Drift = 0.02 dB

SAR (1g) = 3.87 W/kg; SAR (10g) = 1.09 W/kg;



System Check_Head_5600MHz

DUT:D5GHzV2 - SN:1113

Communication System: ; Frequency: 5600.000

Medium: HSL. Medium parameters used: $f= 5600.000$ MHz; $\sigma= 4.95$ S/m; $\epsilon_r = 34.8$

Ambient Temperature: 23.2°C; Liquid Temperature: 22.8°C

DASY6 Configuration:

- Probe: EX3DV4 - SN7706; ConvF(5.39, 5.39, 5.39); Calibrated: 2023-01-26
- Sensor-Surface: 1.4 mm
- Electronics: DAE4 Sn1303; Calibrated: 2022-11-24
- Phantom: Twin-SAM V8.0 (30deg probe tilt); Serial: 2024
- Measurement Software: cDASY6 V6.6.0.13926

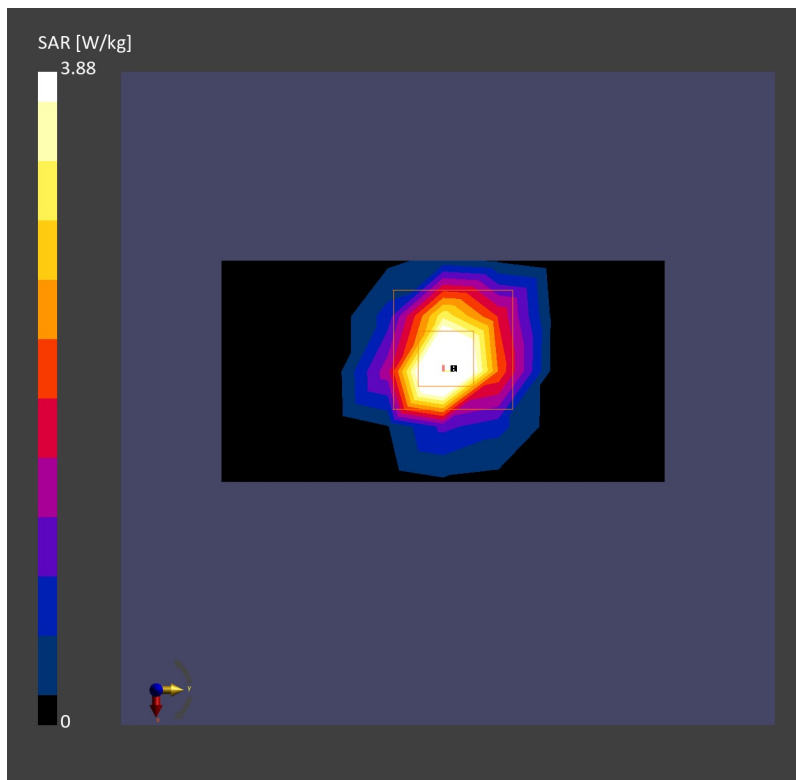
Area Scan (40.0 mm x 80.0 mm): Measurement Grid: 10.0 mm x 10.0 mm

SAR (1g) = 3.64 W/kg; SAR (10g) = 1.06 W/kg;

Zoom Scan (22.0 mm x 22.0 mm x 22.0 mm): Measurement Grid: 4.0 mm x 4.0 mm x 1.4 mm

Power Drift = 0.01 dB

SAR (1g) = 3.88 W/kg; SAR (10g) = 1.11 W/kg;



System Check_Head_5750MHz

DUT:D5GHzV2 - SN:1113

Communication System: ; Frequency: 5750.000

Medium: HSL. Medium parameters used: $f= 5750.000$ MHz; $\sigma= 5.13$ S/m; $\epsilon_r = 34.6$

Ambient Temperature: 23.2°C; Liquid Temperature: 22.8°C

DASY6 Configuration:

- Probe: EX3DV4 - SN7706; ConvF(5.57, 5.57, 5.57); Calibrated: 2023-01-26
- Sensor-Surface: 1.4 mm
- Electronics: DAE4 Sn1303; Calibrated: 2022-11-24
- Phantom: Twin-SAM V8.0 (30deg probe tilt); Serial: 2024
- Measurement Software: cDASY6 V6.6.0.13926

Area Scan (40.0 mm x 80.0 mm): Measurement Grid: 10.0 mm x 10.0 mm

SAR (1g) = 3.27 W/kg; SAR (10g) = 0.960 W/kg;

Zoom Scan (22.0 mm x 22.0 mm x 22.0 mm): Measurement Grid: 4.0 mm x 4.0 mm x 1.4 mm

Power Drift = 0.01 dB

SAR (1g) = 3.79 W/kg; SAR (10g) = 1.08 W/kg;

