
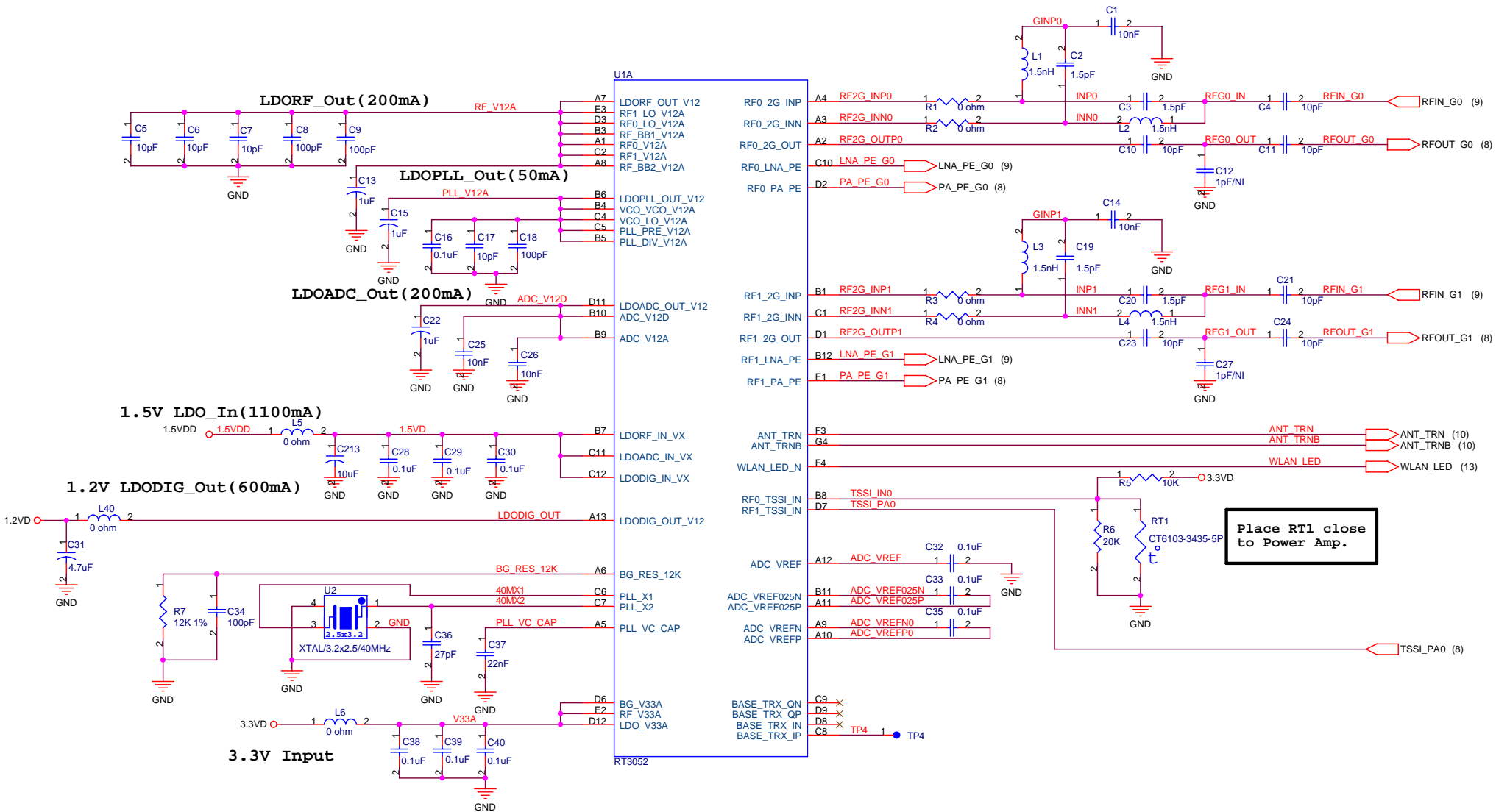


Filename:
AP-RT3052-V22RW-LNA-2X2-080826.DSN

		RALINK TECHNOLOGY, CORP. CONFIDENTIAL	
		Title: 11n 2.4G AP-RT3052	
Size: B	Document Number: AP-RT3052-V22RW-LNA.SCH		Rev: 2.2
Date: Monday, December 21, 2009	Sheet: 1	of 14	



Place RT1 close to Power Amp.



RALINK TECHNOLOGY, CORP. CONFIDENTIAL

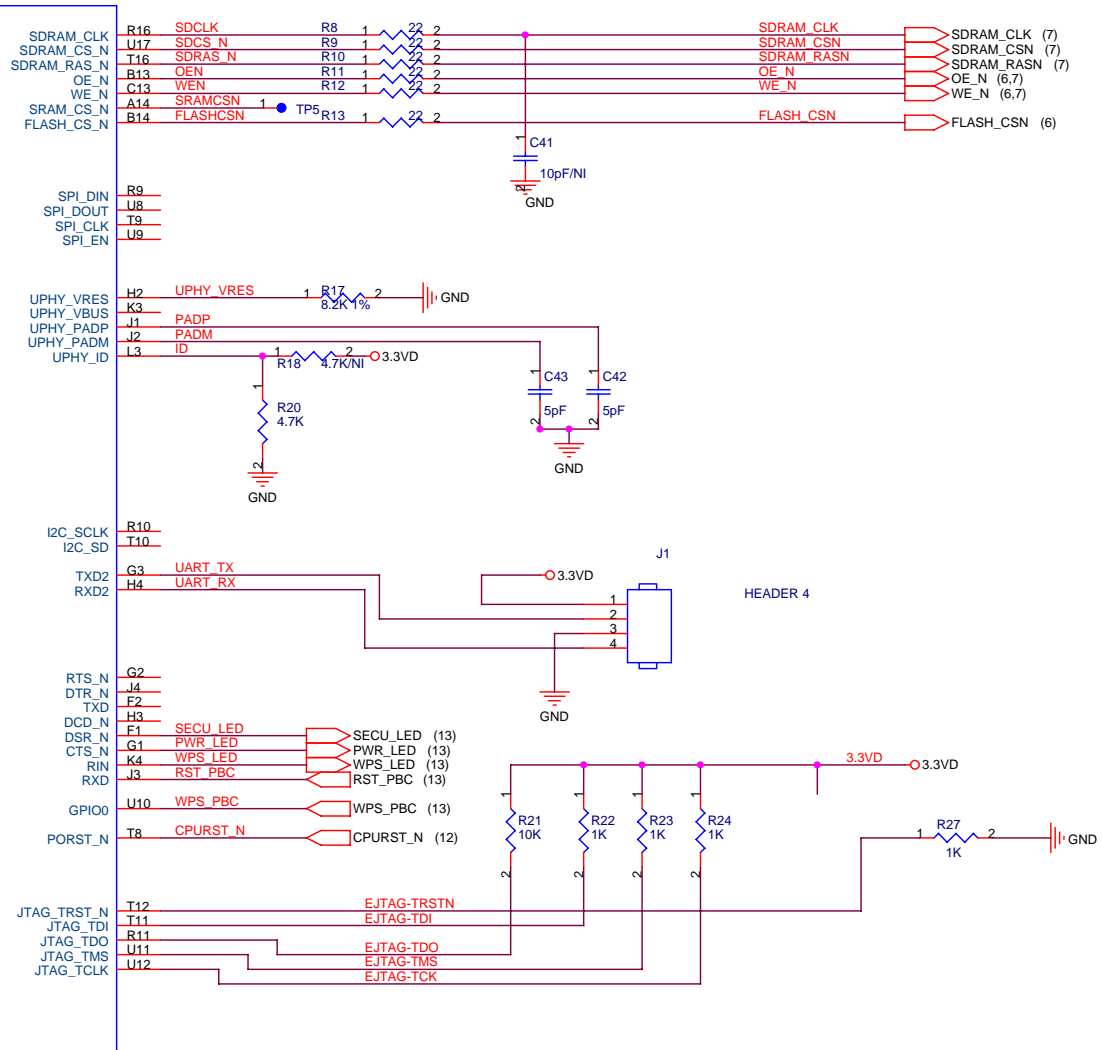
Title		RT3052-A RF	
Size	Document Number	11-RT3052-RF-A.SCH	
B			Rev 2.2
Date:	Monday, December 21, 2009	Sheet	2 of 14

MDATA[0:31] (6,7) ← MDATA[0:31]


- MDATA31 P12 MD31
- MDATA30 R13 MD30
- MDATA29 U13 MD29
- MDATA28 T13 MD28
- MDATA27 P13 MD27
- MDATA26 N14 MD26
- MDATA25 R12 MD25
- MDATA24 U14 MD24
- MDATA23 U15 MD23
- MDATA22 R14 MD22
- MDATA21 P14 MD21
- MDATA20 T14 MD20
- MDATA19 R15 MD19
- MDATA18 P15 MD18
- MDATA17 U16 MD17
- MDATA16 T15 MD16
- MDATA15 E17 MD15
- MDATA14 F16 MD14
- MDATA13 D17 MD13
- MDATA12 G15 MD12
- MDATA11 F15 MD11
- MDATA10 D16 MD10
- MDATA9 C17 MD9
- MDATA8 C16 MD8
- MDATA7 E15 MD7
- MDATA6 A17 MD6
- MDATA5 B16 MD5
- MDATA4 B17 MD4
- MDATA3 C15 MD3
- MDATA2 D15 MD2
- MDATA1 A16 MD1
- MDATA0 B15 MD0
- MADDR22 D13 MA22
- MADDR21 C14 MA21
- MADDR20 A15 MA20
- MADDR19 N15 MA19
- MADDR18 P16 MA18
- MADDR17 R17 MA17
- MADDR16 T17 MA16
- MADDR15 M15 MA15
- MADDR14 N17 MA14
- MADDR13 N16 MA13
- MADDR12 P17 MA12
- MADDR11 M16 MA11
- MADDR10 M17 MA10
- MADDR9 L16 MA9
- MADDR8 L17 MA8
- MADDR7 K16 MA7
- MADDR6 K17 MA6
- MADDR5 K15 MA5
- MADDR4 H15 MA4
- MADDR3 F16 MA3
- MADDR2 F17 MA2
- MADDR1 G16 MA1
- MADDR0 H16 MA0

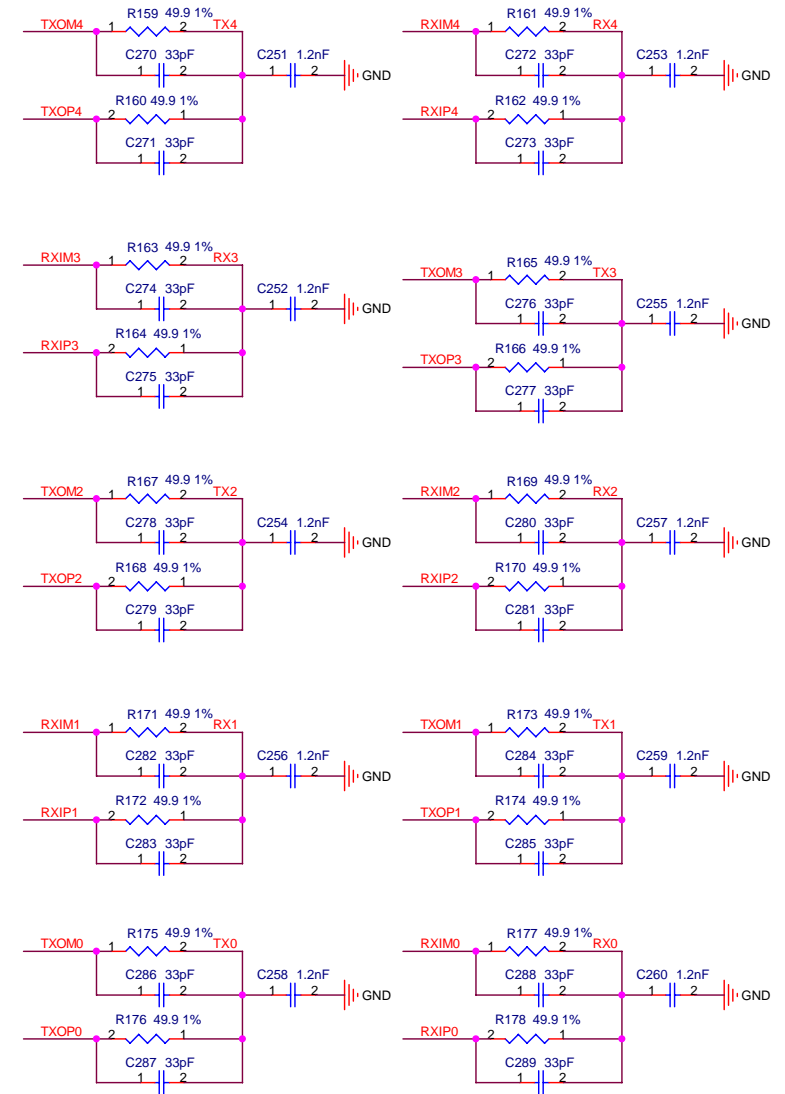
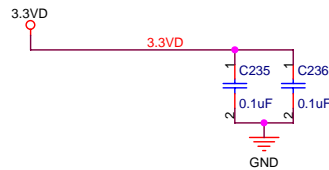
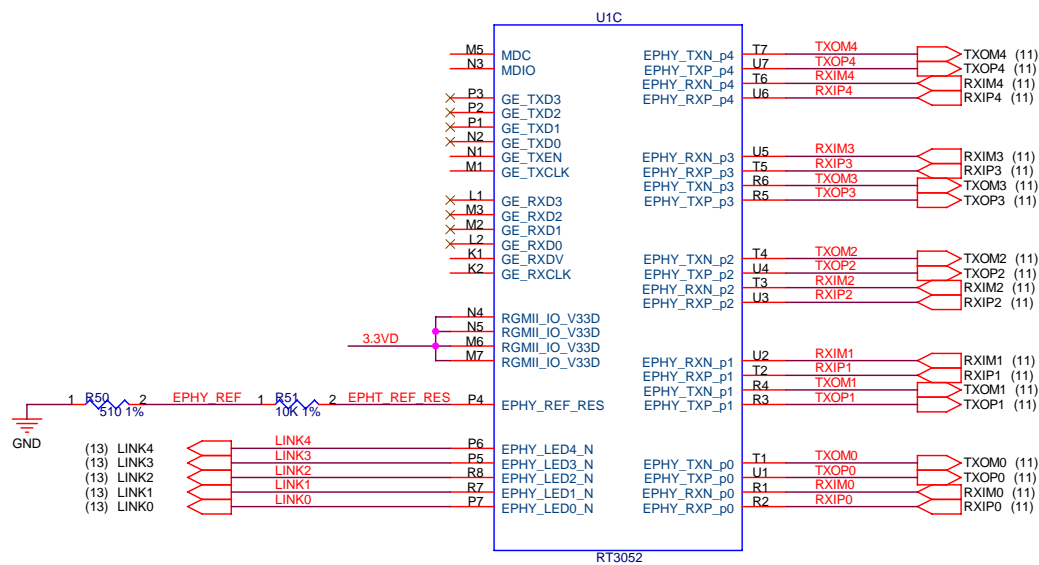
MADDR[0:22] (6,7) ← MADDR[0:22]


U1B

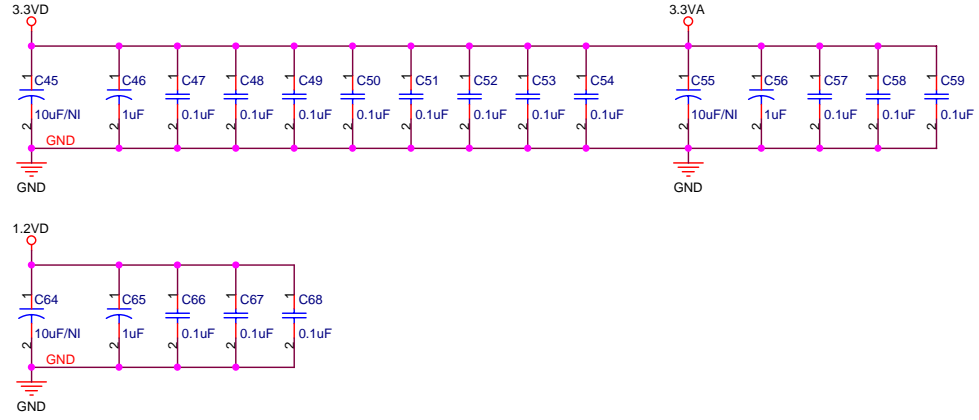
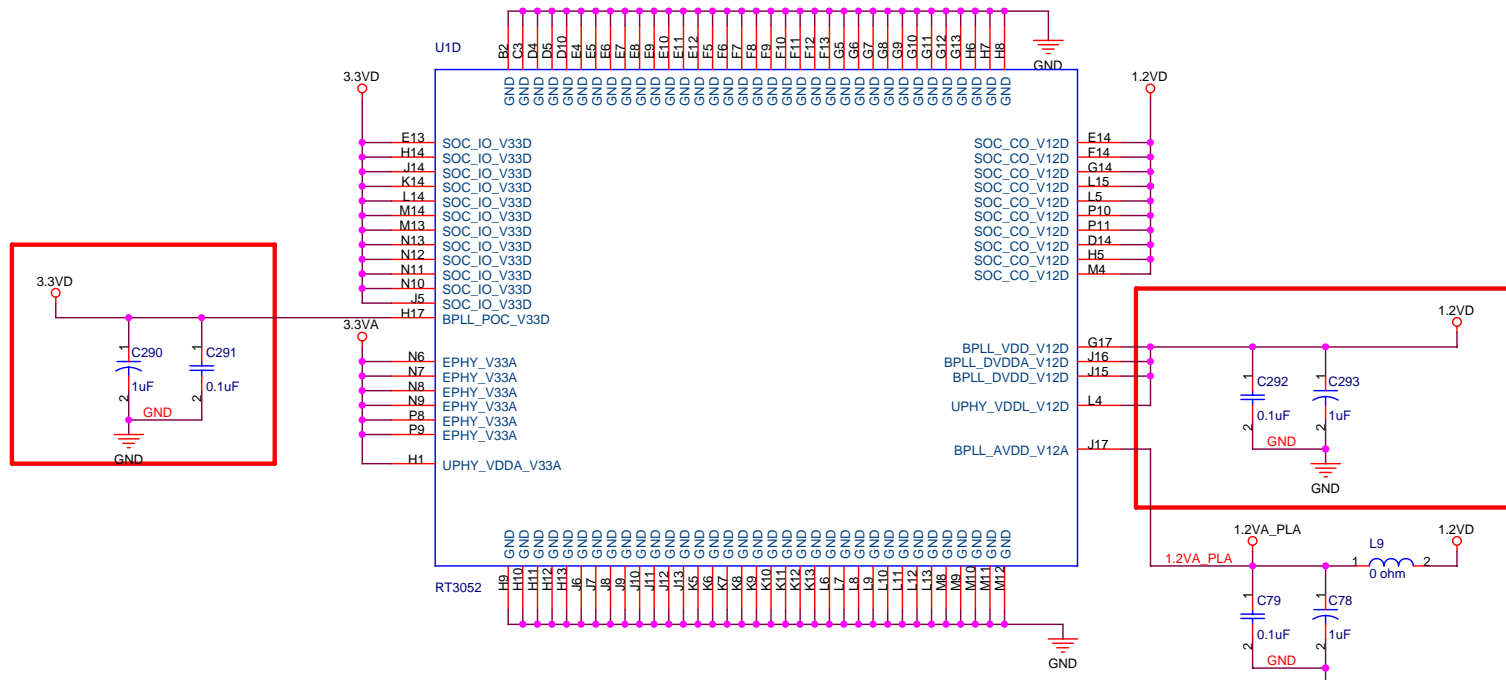



RT3052

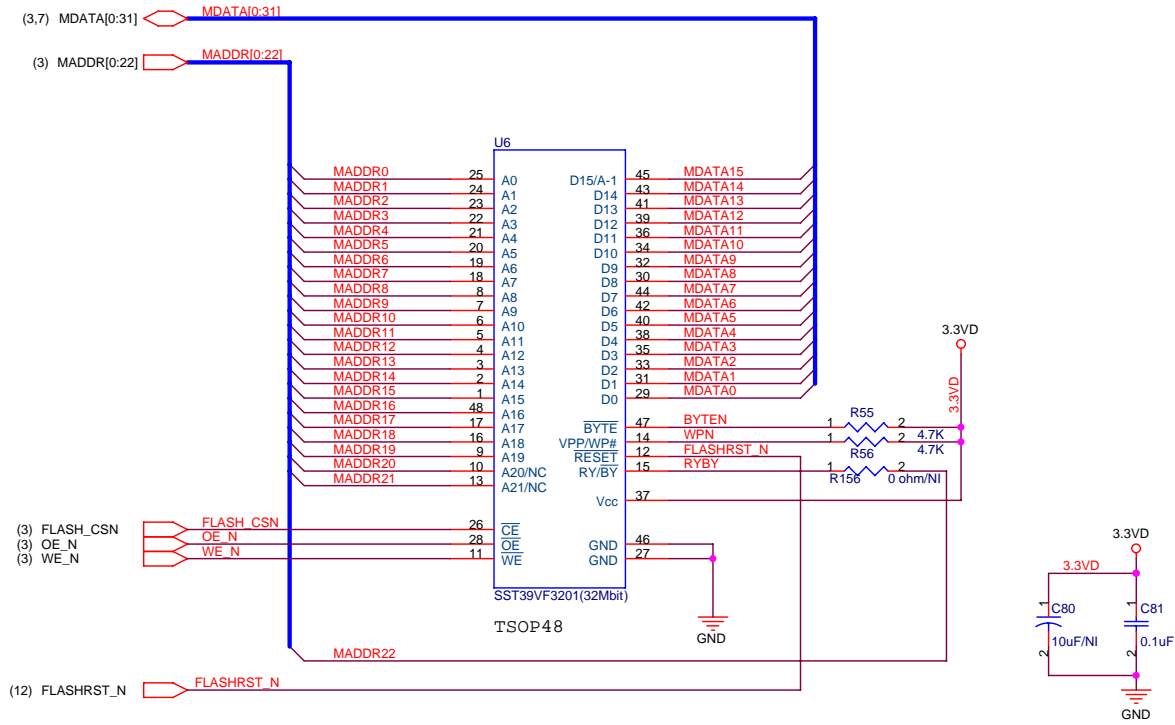
		RALINK TECHNOLOGY, CORP. CONFIDENTIAL	
		Title: RT3052-B Peripheral	
Size: B	Document Number: 12-RT3052-Peripheral-B.SCH	Rev: 2.2	
Date: Friday, April 16, 2010	Sheet: 3	of 14	

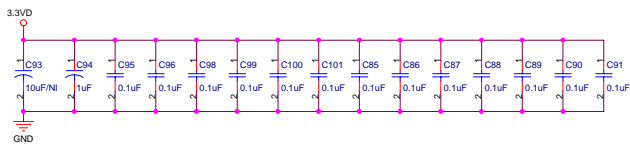
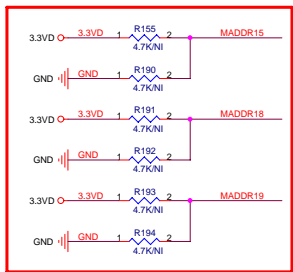
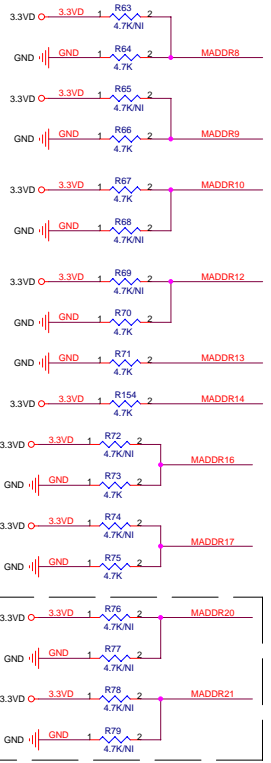
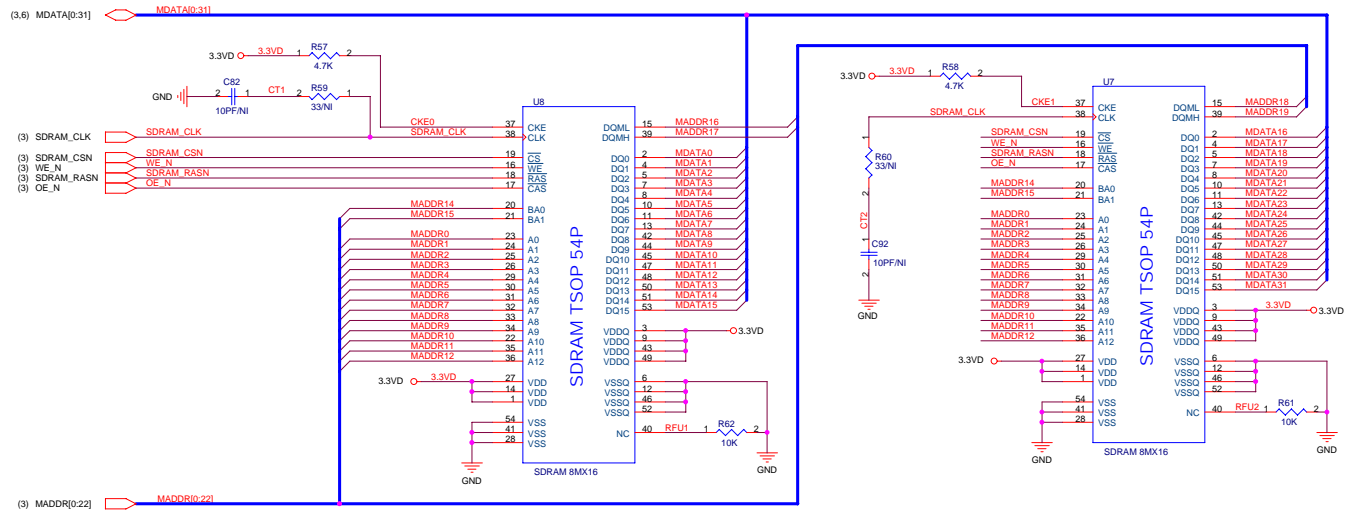


		RALINK TECHNOLOGY, CORP. CONFIDENTIAL	
		Title RT3052-C Ethernet	
Size B	Document Number 13-RT3052-Ethernet-C.SCH	Rev 2.2	
Date: Monday, December 21, 2009	Sheet 4	of 14	



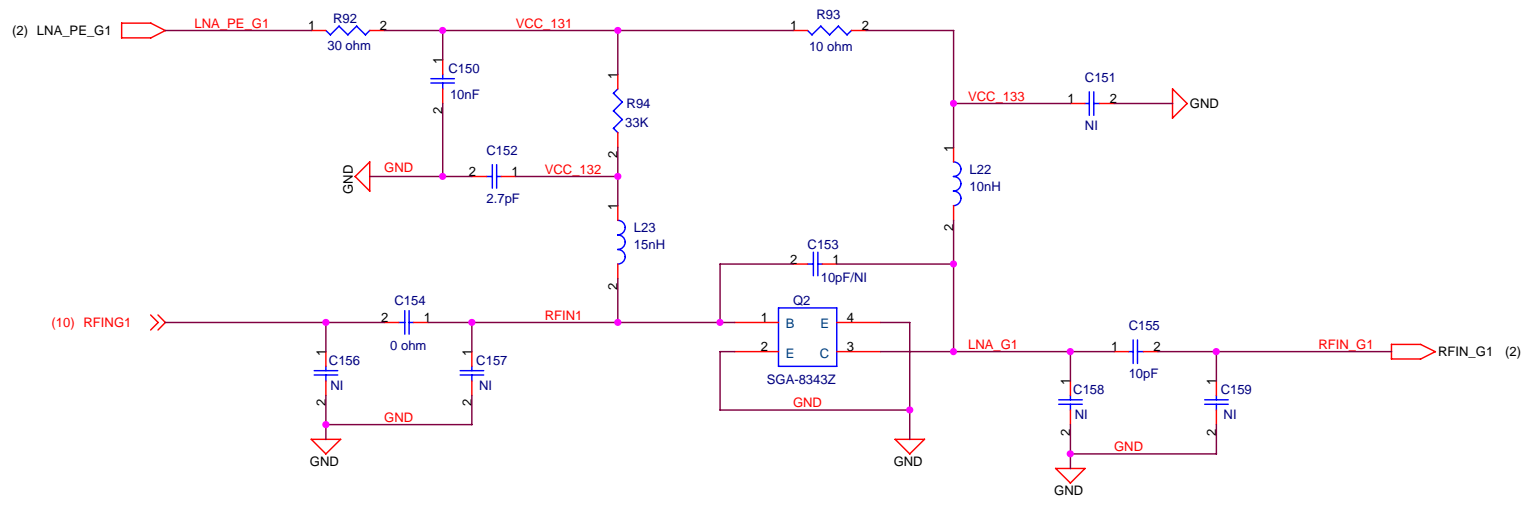
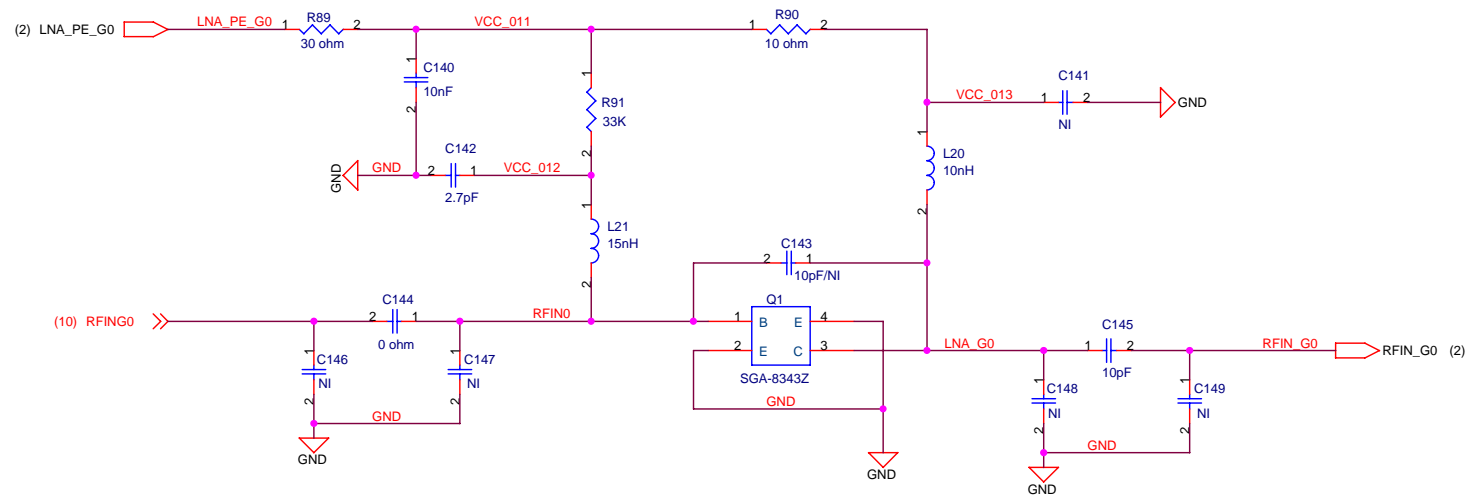
		RALINK TECHNOLOGY, CORP. CONFIDENTIAL	
		Title RT3052-D Power	
Size B	Document Number 14-R3052-Power-D.SCH		Rev 2.2
Date:	Monday, December 21, 2009	Sheet 5	of 14




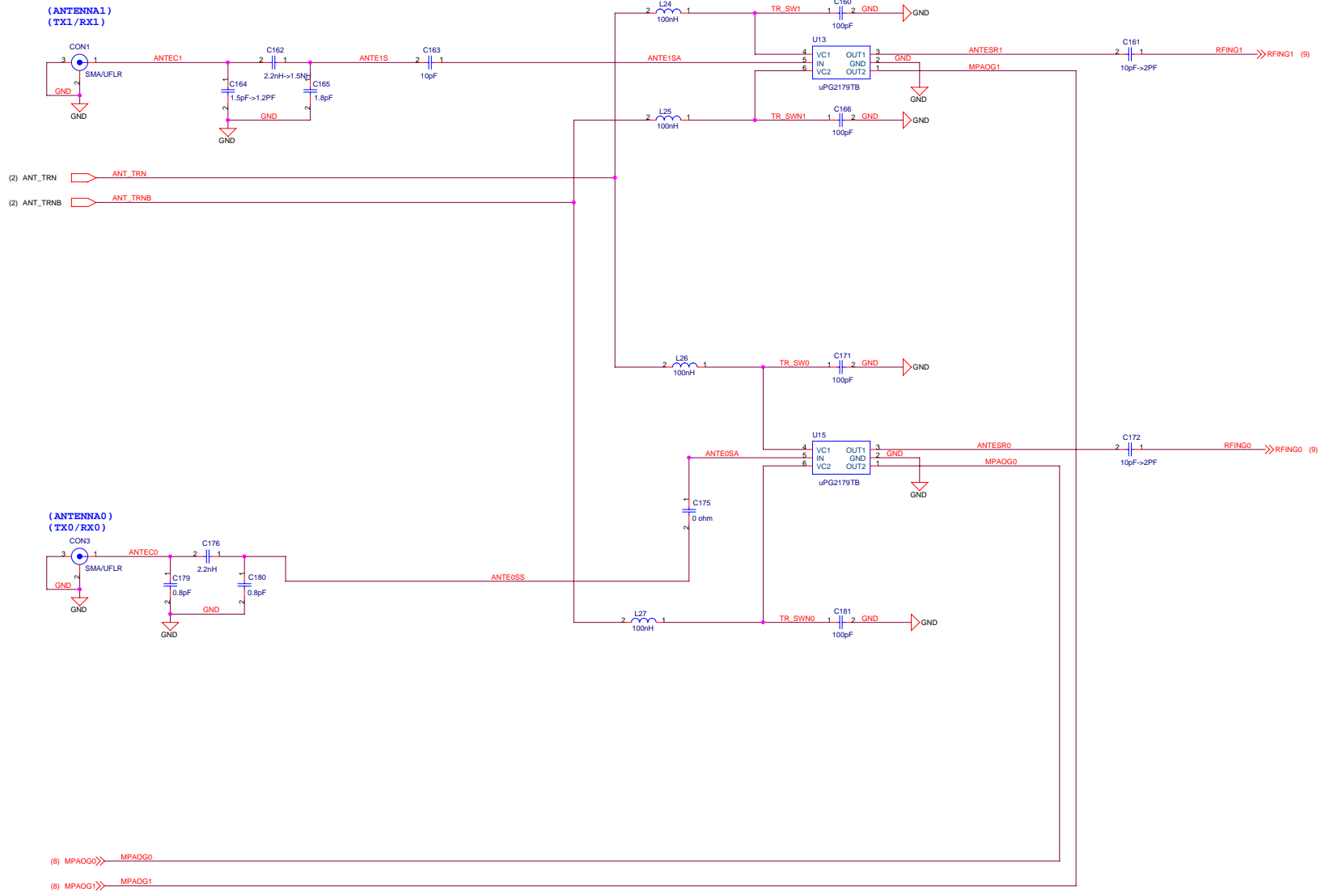


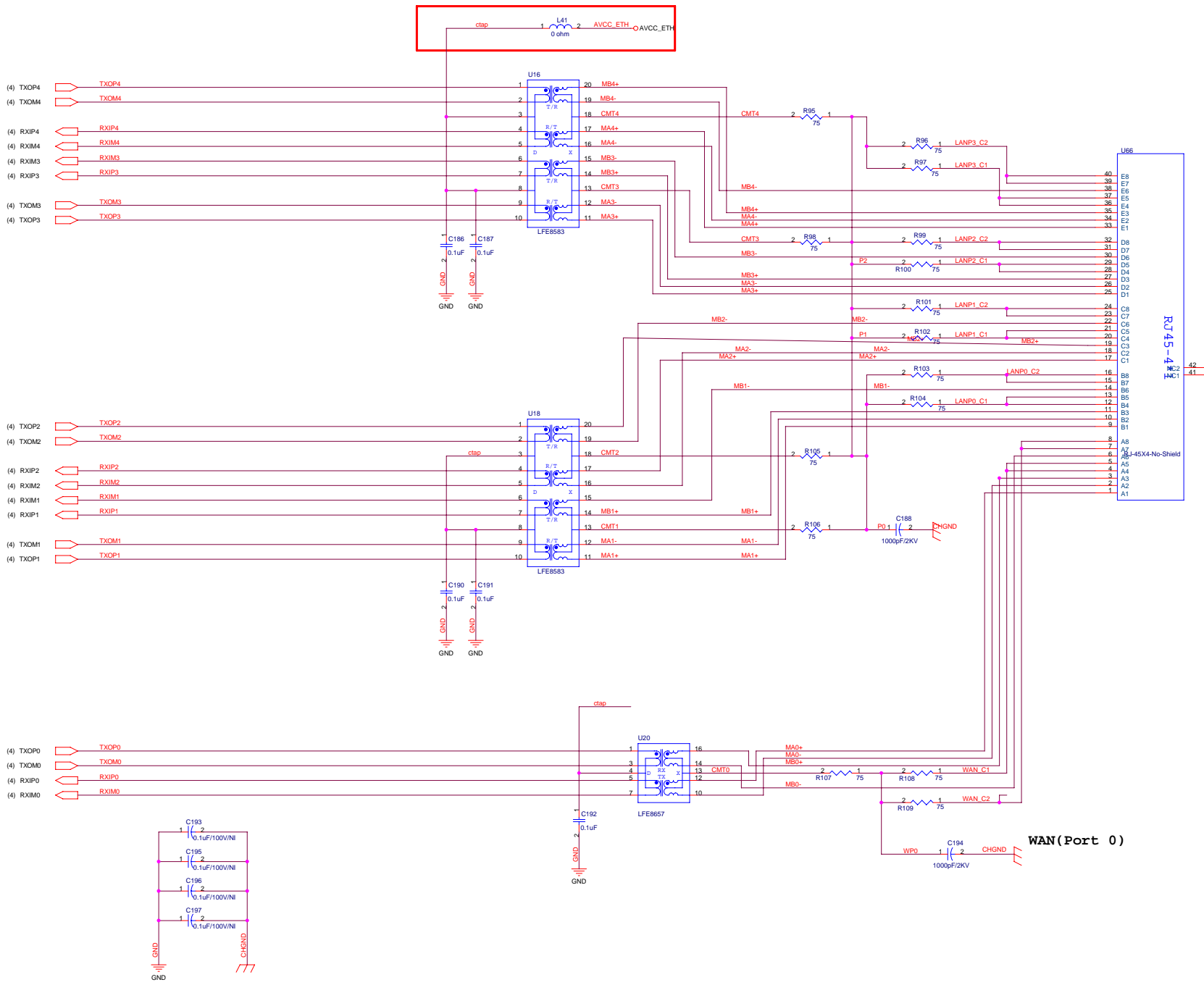
Boot Up Strapping

Pin Name	Description	Value=0	Value=1
MA[9:8]	BOOT FROM	00 : 16bit flash* 01 : 8bit flash 10 : NAND Flash 11 : Internal ROM	
MA10	CPU CLK SEL	320Mhz	384Mhz*
MA12	BIG ENDIAN	Little*	Big
MA13	Bypass PLL	Not Bypass*	Bypass
MA14	Boot Addr	0x1FC0000*	0x1F000000
MA15	Reserved		
MA[17:16]	GE MODE	Gagabit Port Mode 00 : RGMII (10/100/1000M bps)* 01 : MII(10/100M bps) 10 : Reversed MII(10/100M bps) 11 : Reversed	
MA18	Reserved		
MA19	Reserved		
MA20	INIC SDRAM	2MB*	8MB
MA21	INIC Config	NA	EEPROM /MA20



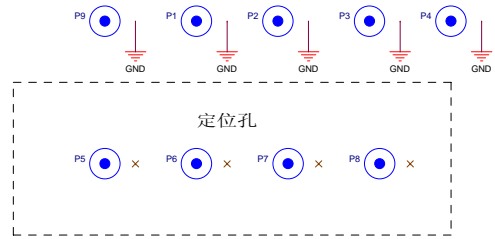
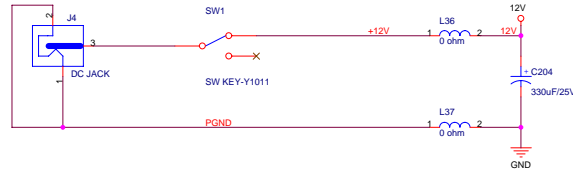
			RALINK TECHNOLOGY, CORP. CONFIDENTIAL		
			Title LNA		
Size B	Document Number 32-LNA.SCH			Rev 2.2	
Date: Thursday, December 30, 2010			Sheet 9 of 14		



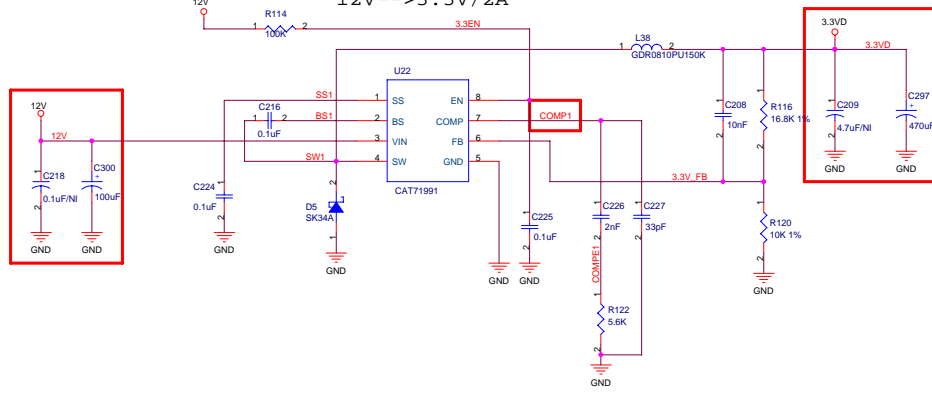


WAN (Port 0)

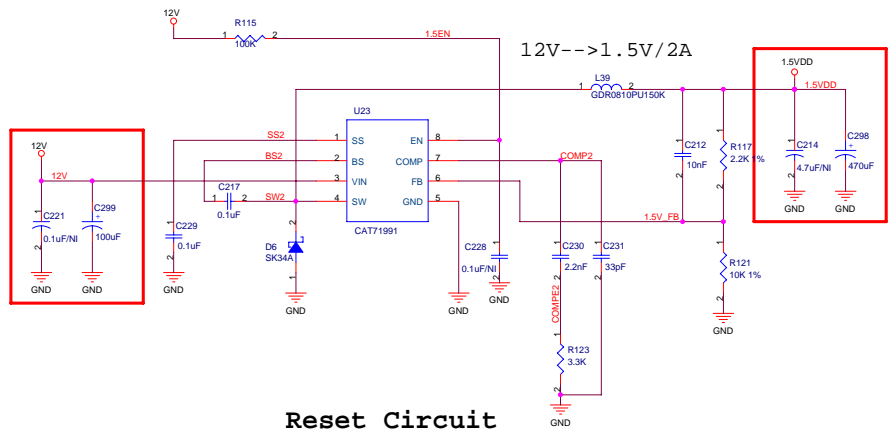
12V DC ADAPTER



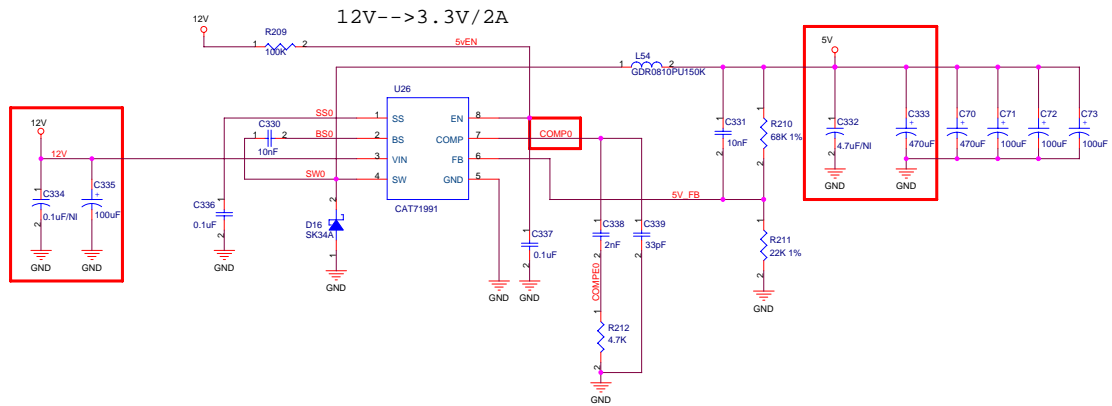
12V-->3.3V/2A



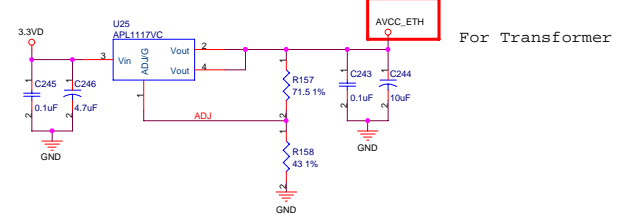
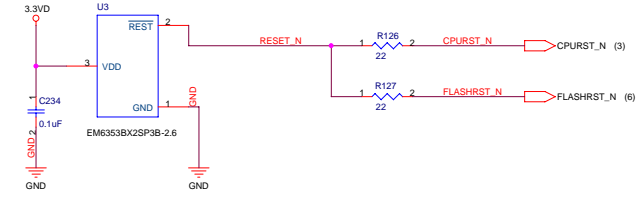
12V-->1.5V/2A

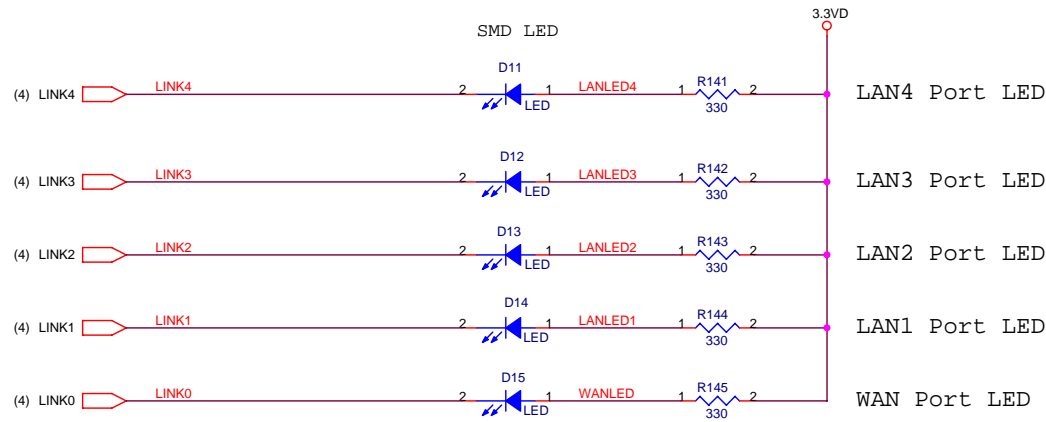
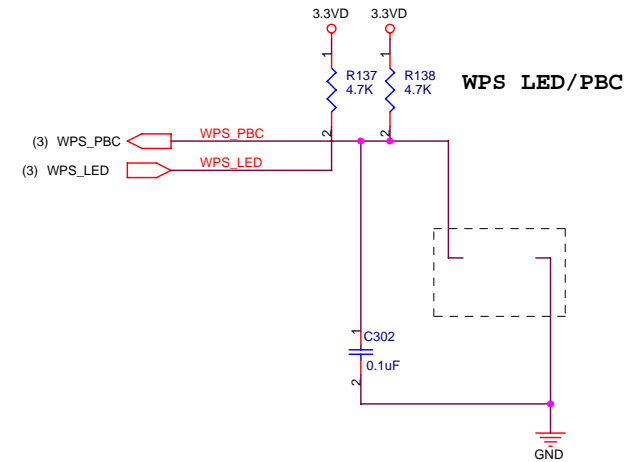
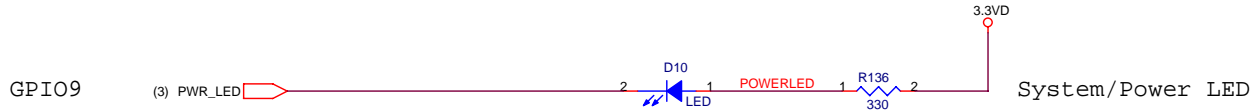
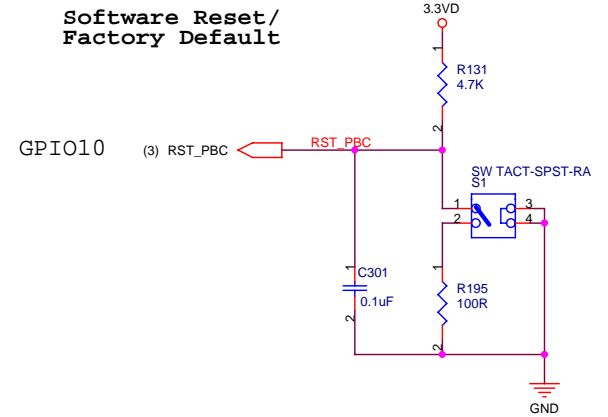
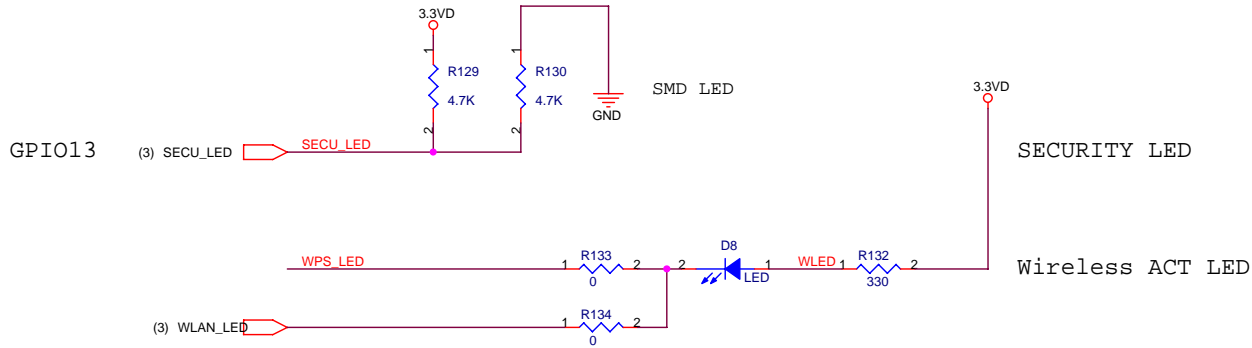



12V-->3.3V/2A



Reset Circuit





		RALINK TECHNOLOGY, CORP. CONFIDENTIAL	
		Title: LED	
Size: B	Document Number: 6-LED.SCH		Rev: 2.2
Date: Monday, December 21, 2009	Sheet: 13	of 14	

