

## **Circuit Description**

When the bluetooth speaker connects to another device, the device send the music to the bluetooth speaker via the bluetooth. The working state of the bluetooth speaker indicate by the LED. There are Multi-function Button, Volume up button and Volume Down button for you to increase the volume or decrease the volume of the speaker. The product has a USB Port, the USB port only use for battery charging. The operating voltage is battery 3.7V.

The bluetooth speaker based on IS1621N-152 chipset, It is compliant to Bluetooth v2.1 + EDR specification. U1(IS1621N-152) is a single chip and baseband IC for Bluetooth systems. It works with a crystal Y1(16MHz) The frequency of the bluetooth speaker is 2402-2480MHz

### Antenna Specification:

Type of Antenna: PCB Antenna

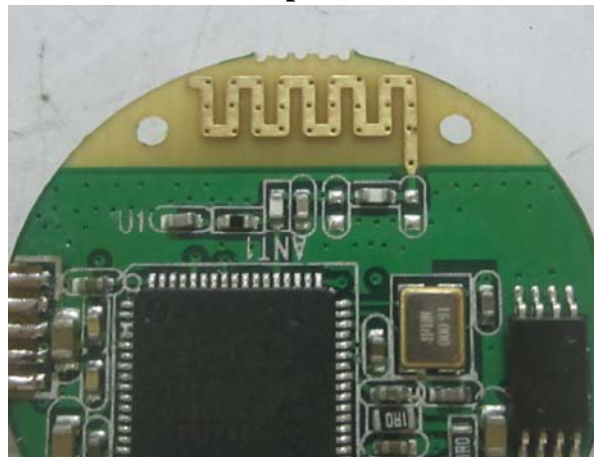
Frequency Range: 2402-2480MHz

Maximum Gain: 0 dBi

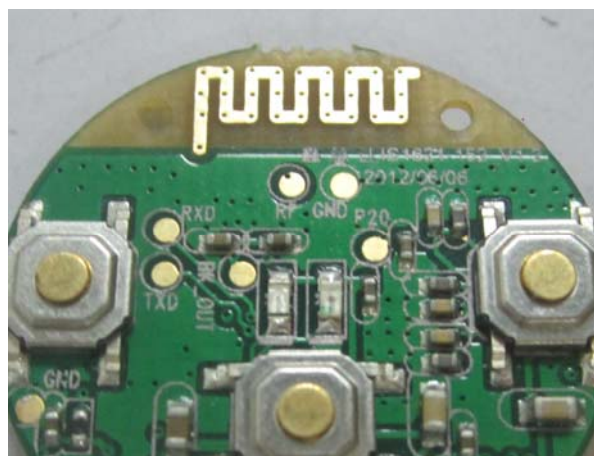
Impedance: 50 ohm

Size: 9mm x 4mm

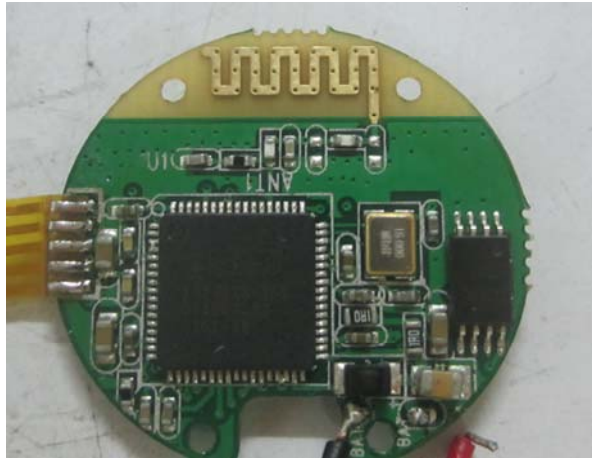
**Antenna View  
Top**



**Bottom**



**Antenna Location  
Top**



**Bottom**

