

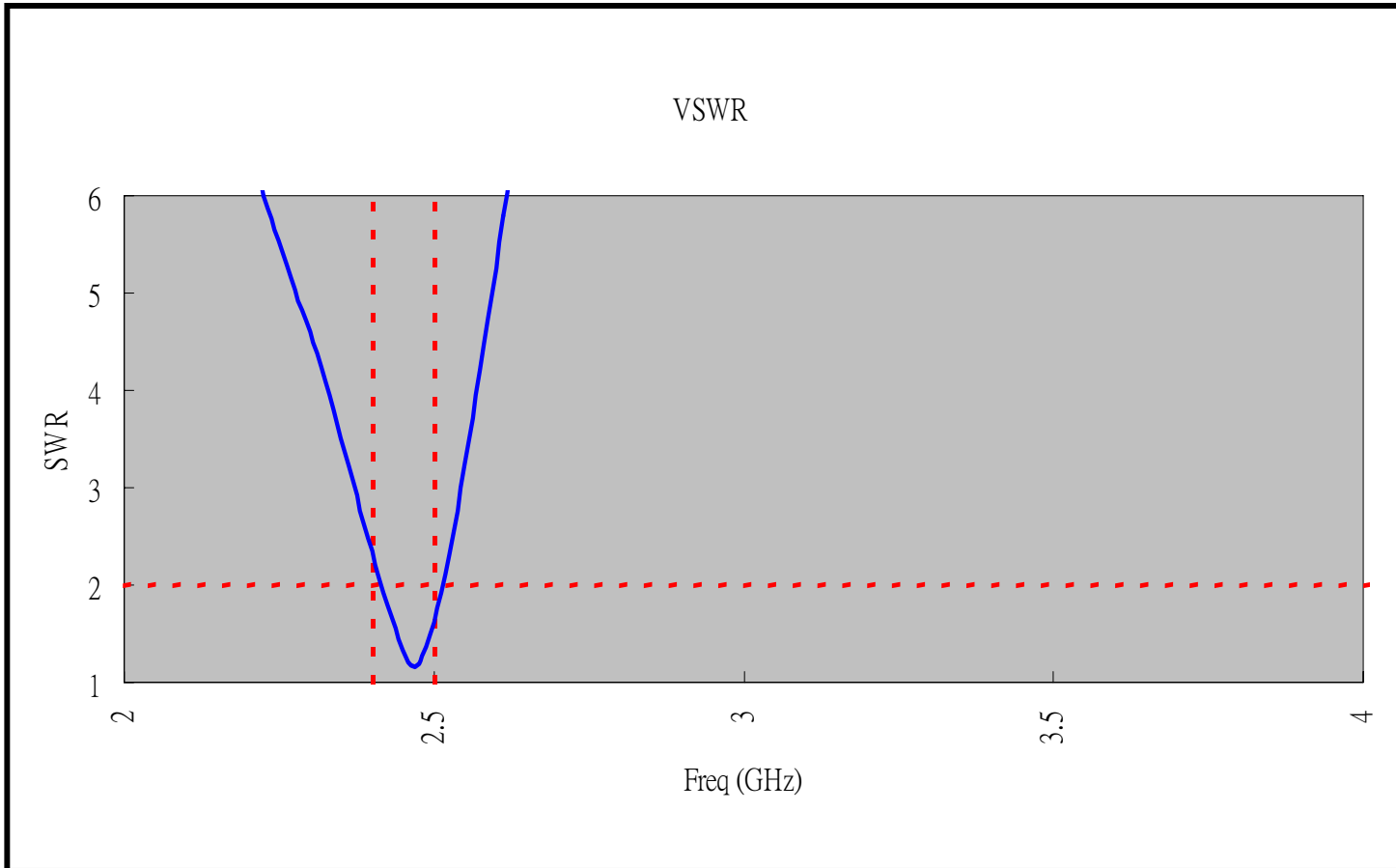
FOXCONN NWInG

Antenna Engineering Test Report

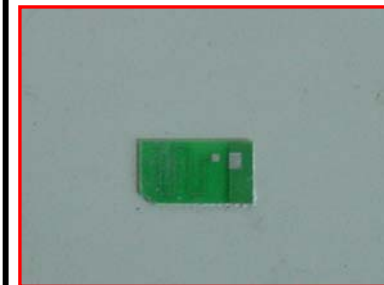
Quanta ZG1S WLAN Antenna



VSWR of Blue-tooth Antenna



2.4 GHz = 2.341
2.45GHz = 1.337
2.5 GHz = 1.618

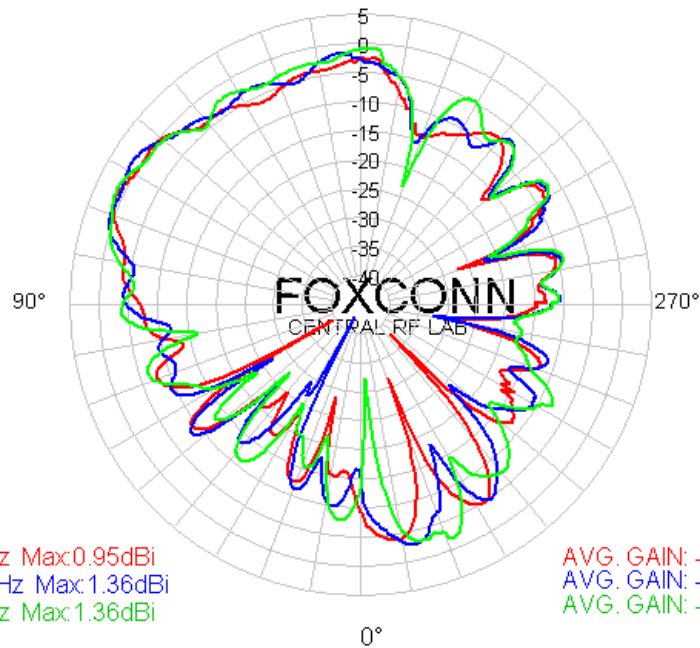


Cable length = 73.5 mm

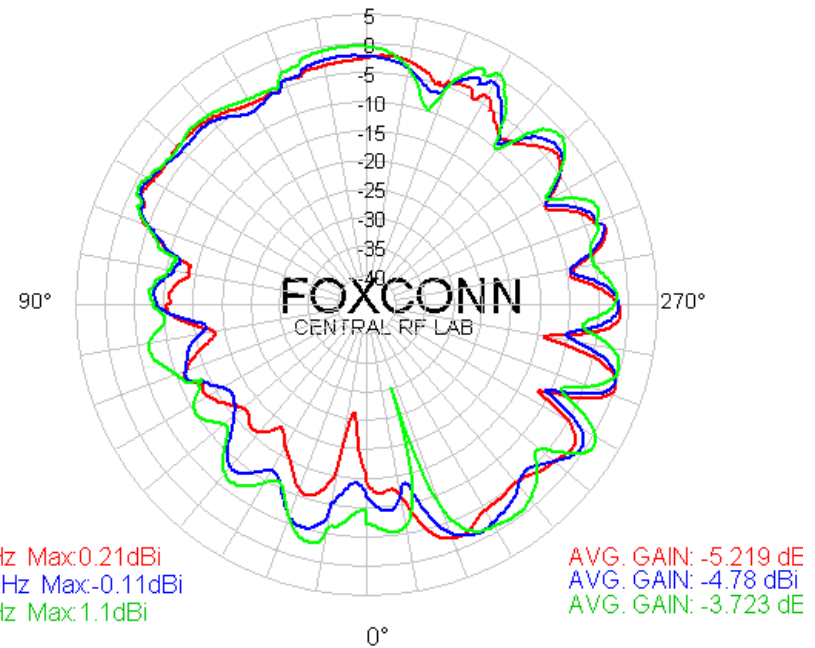
X-Y Plane Radiation Pattern of WLAN BT Antenna

2.4GHz~2.5GHz

HORIZONTAL POLARIZATION



VERTICAL POLARIZATION



X-Y Plane Gain of Blue-tooth Antenna

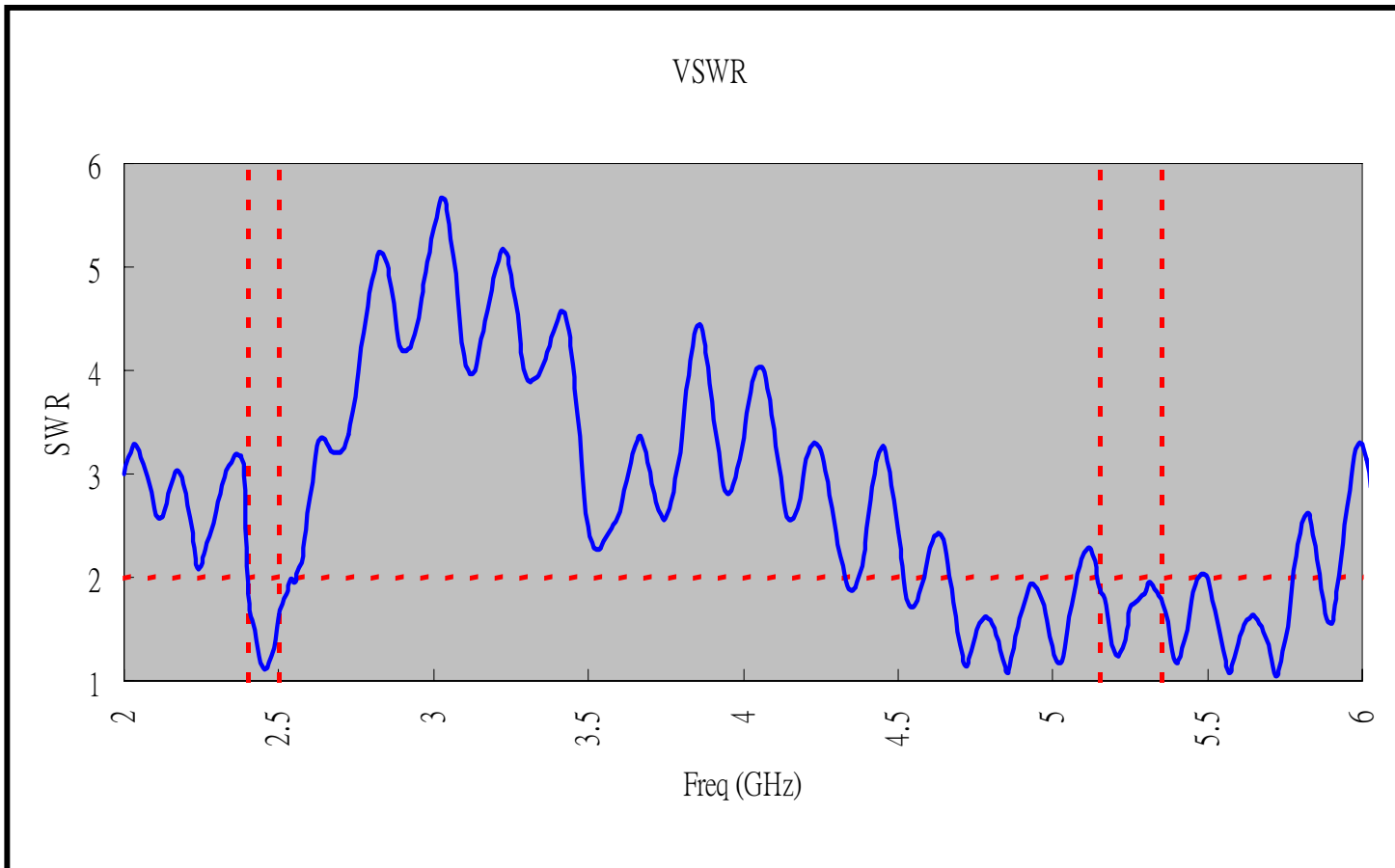
Average Gain

(dBi)	2400MHz	2450 MHz	2500 MHz
XY-H	-6.74	-6.04	-5.67
XY-V	-5.22	-4.78	-3.72
XY-AVG.	-2.90	-2.35	-1.58

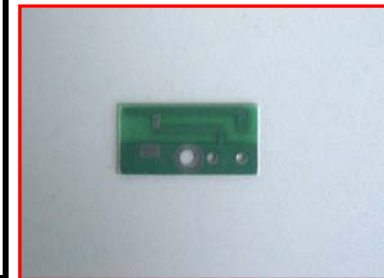
Peak Gain

(dBi)	2400MHz	2450 MHz	2500 MHz
XY-right-H	0.95	1.36	1.36
XY-right-V	0.21	-0.11	1.10

VSWR of WLAN Right Antenna



2.4 GHz = 1.849
2.45GHz = 1.128
2.5 GHz = 1.606
5.15 GHz = 1.901
5.25 GHz = 1.702
5.35 GHz = 1.802

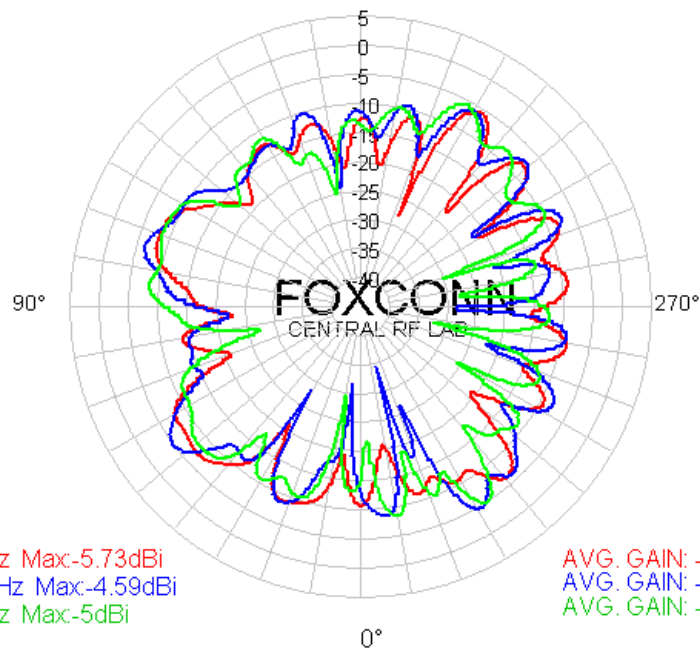


Cable length = 492 mm

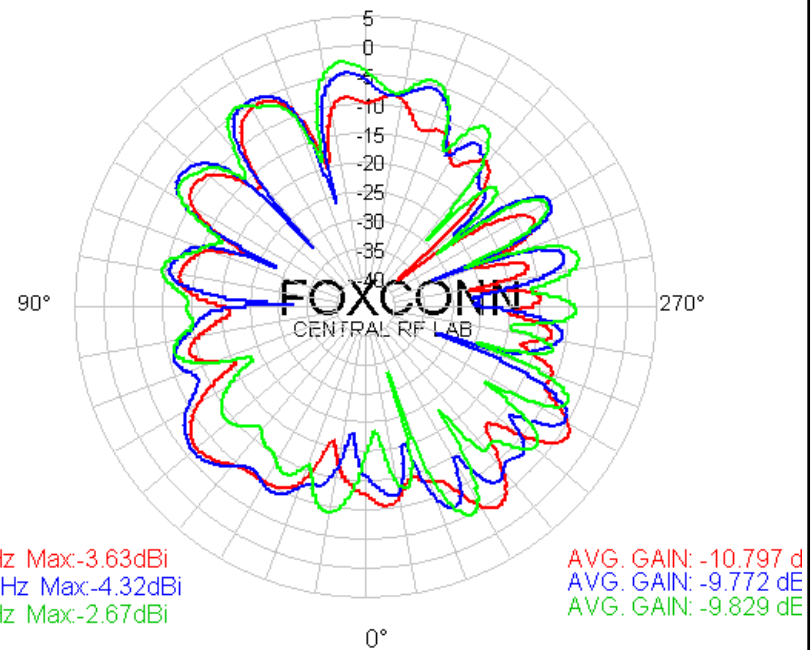
X-Y Plane Radiation Pattern of WLAN Right Antenna

2.4GHz~2.5GHz

HORIZONTAL POLARIZATION



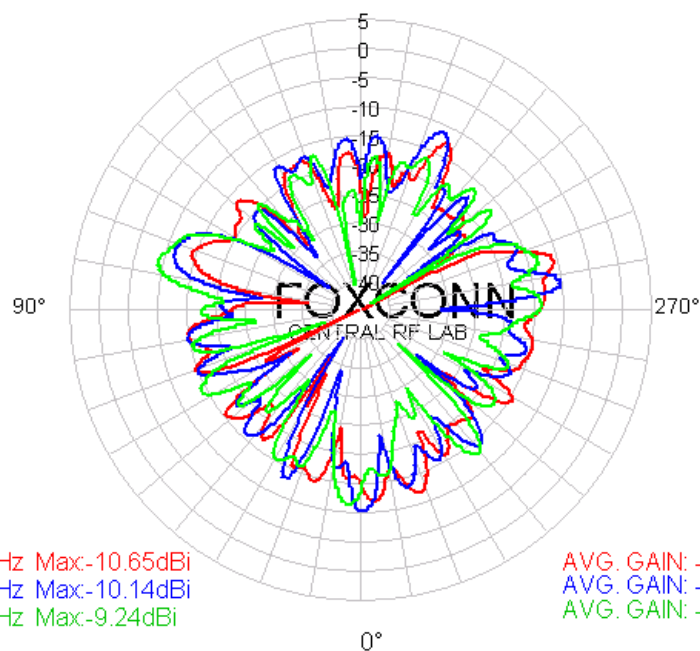
VERTICAL POLARIZATION



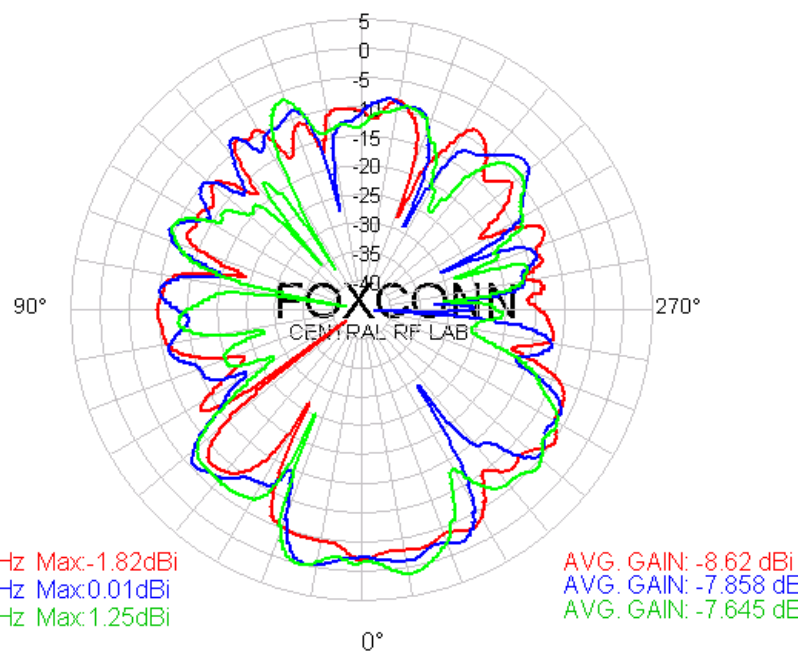
X-Y Plane Radiation Pattern of WLAN Right Antenna

5.15GHz~5.35GHz

HORIZONTAL POLARIZATION



VERTICAL POLARIZATION



X-Y Plane Gain of WLAN Right Antenna

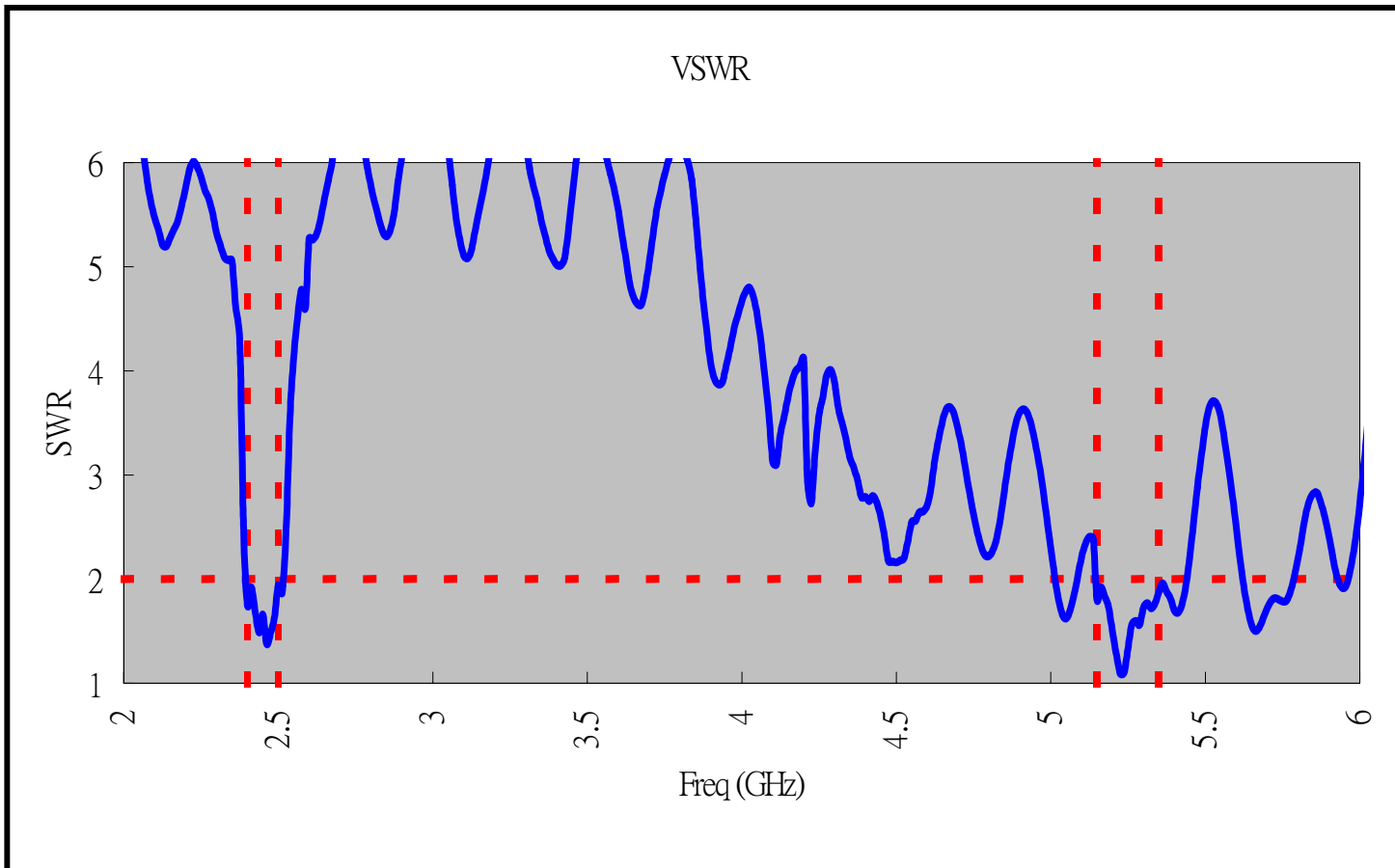
Average Gain

Freq(GHz)	2.4	2.45	2.5	5.15	5.25	5.35
XY-H(dBi)	-11.31	-10.62	-11.58	-17.27	-17.20	-17.59
XY-V(dBi)	-10.80	-9.77	-9.83	-8.62	-7.86	-7.65
Average Gain	-8.03	-7.16	-7.61	-8.06	-7.38	-7.23

Peak Gain

Freq(GHz)	2.4	2.45	2.5	5.15	5.25	5.35
XY-H(dBi)	-5.73	-4.57	-5.00	-10.65	-10.14	-9.24
XY-V(dBi)	-3.63	-4.32	-2.67	-1.82	0.01	1.25

VSWR of WLAN Left Antenna



2.4 GHz = 1.751
2.45GHz = 1.662
2.5 GHz = 1.943
5.15 GHz = 1.820
5.25 GHz = 1.325
5.35 GHz = 1.884

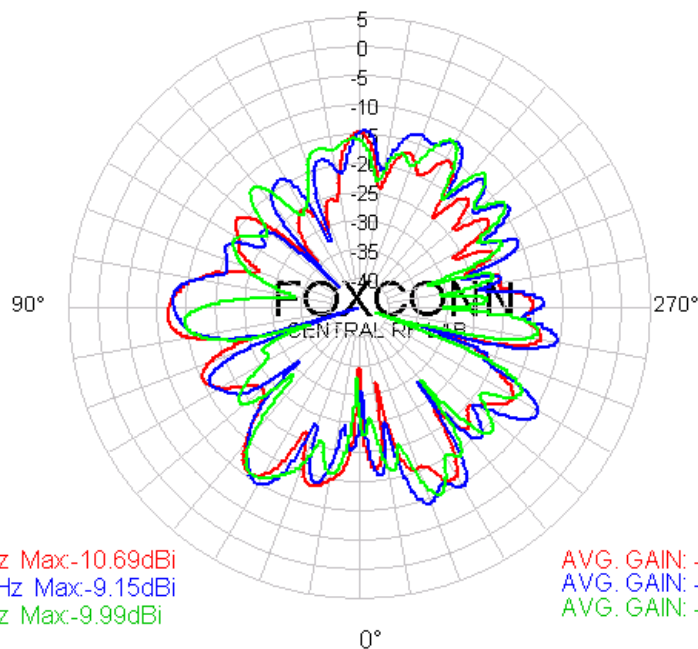


Cable length = 340 mm

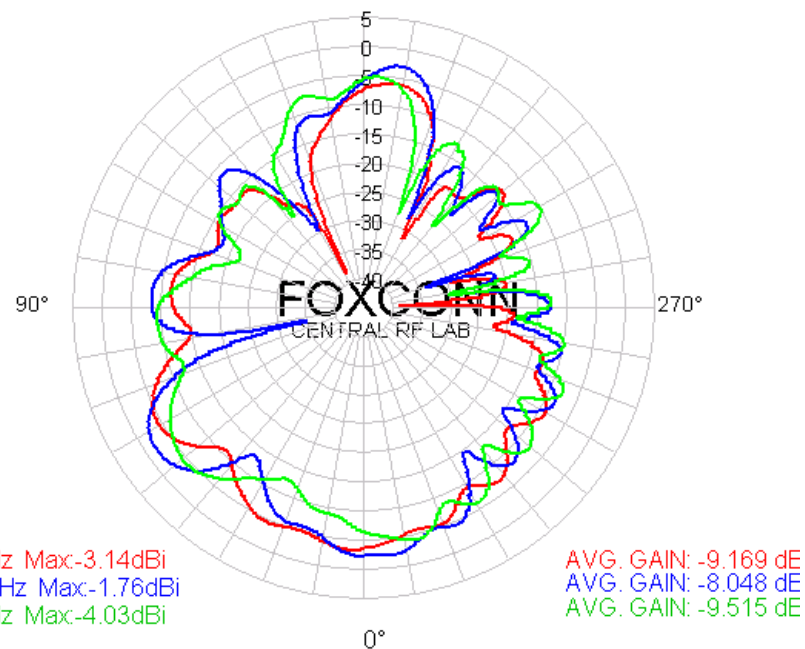
X-Y Plane Radiation Pattern of WLAN Left Antenna

2.4GHz~2.5GHz

HORIZONTAL POLARIZATION



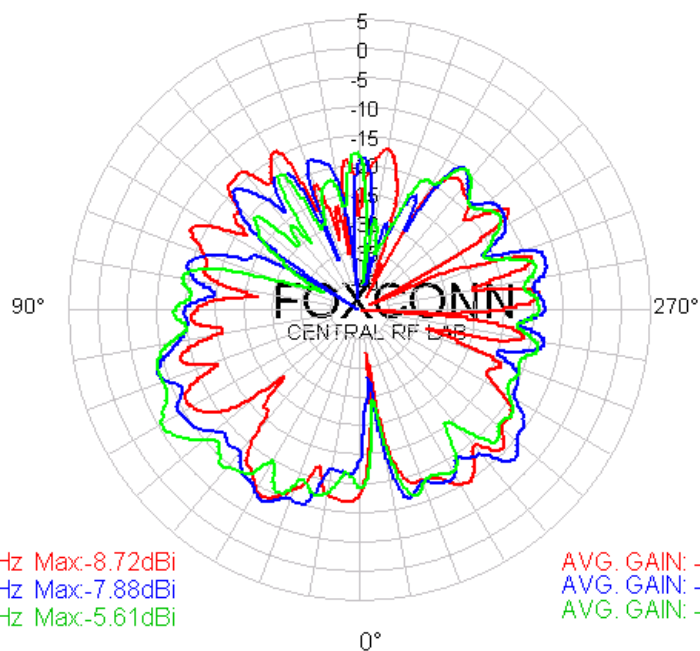
VERTICAL POLARIZATION



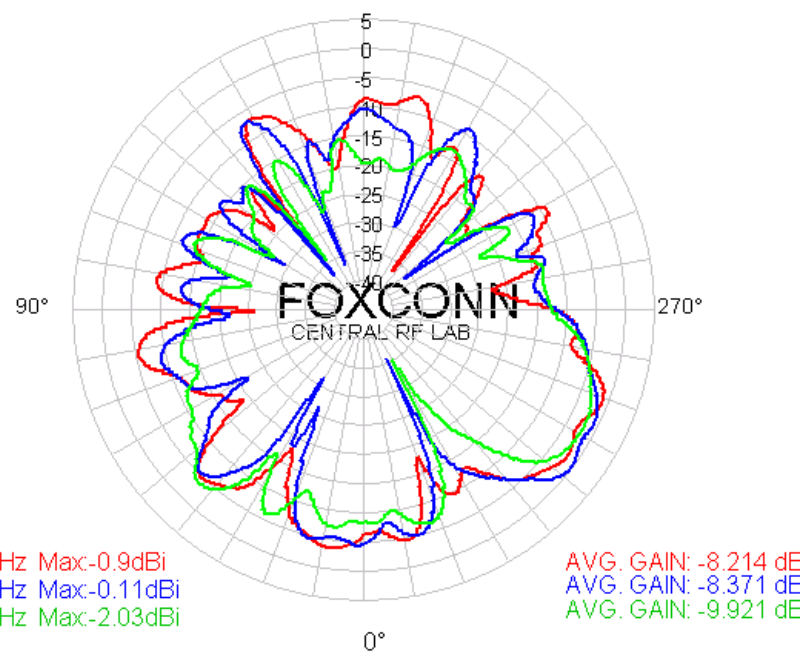
X-Y Plane Radiation Pattern of WLAN Left Antenna

5.15GHz~5.35GHz

HORIZONTAL POLARIZATION



VERTICAL POLARIZATION



X-Y Plane Gain of WLAN Left Antenna

Average Gain

Freq(GHz)	2.4	2.45	2.5	5.15	5.25	5.35
XY-H(dBi)	-17.23	-15.61	-17.35	-15.25	-13.96	-14.16
XY-V(dBi)	-9.17	-8.05	-9.52	-8.21	-8.37	-9.92
Average Gain	-8.54	-7.35	-8.85	-7.43	-7.31	-8.53

Peak Gain

Freq(GHz)	2.4	2.45	2.5	5.15	5.25	5.35
XY-H(dBi)	-10.69	-9.15	-9.99	-8.72	-7.88	-5.61
XY-V(dBi)	-3.14	-1.76	-4.03	-0.90	-0.11	-2.03