

P-sensor off (HPUE)

LTE B41/BW=5M		Average Conducted Power(dBm)				LTE B41/BW=10M		Average Conducted Power(dBm)			
Modulation	RB Size/Offset	Max. Tune-up (dBm)	Channel/Frequency(MHz)			Modulation	RB Size/Offset	Max. Tune-up (dBm)	Channel/Frequency(MHz)		
			39675/2498.5	40620/2593	41565/2687.5				39700/2501	40620/2593	41540/2685
QPSK	1/0	27.00	25.88	26.21	25.96	QPSK	1/0	27.00	26.15	26.25	26.18
	1/12	27.00	25.94	26.18	25.94		1/24	27.00	26.13	26.14	26.14
	1/24	27.00	26.08	26.10	25.98		1/49	27.00	26.08	26.10	26.13
	12/0	26.00	24.97	25.30	25.05		25/0	26.00	25.24	25.34	25.27
	12/6	26.00	24.99	25.23	24.99		25/12	26.00	25.18	25.19	25.19
	12/11	26.00	25.15	25.17	25.05		25/24	26.00	25.15	25.17	25.20
	25/0	26.00	24.92	25.25	25.00		50/0	26.00	25.19	25.29	25.22
16QAM	1/0	26.00	24.95	25.28	25.03	16QAM	1/0	26.00	25.22	25.32	25.25
	1/12	26.00	25.02	25.26	25.02		1/24	26.00	25.21	25.22	25.22
	1/24	26.00	25.18	25.20	25.08		1/49	26.00	25.18	25.20	25.23
	12/0	25.00	24.03	24.36	24.11		25/0	25.00	24.30	24.40	24.33
	12/6	25.00	24.02	24.26	24.02		25/12	25.00	24.21	24.22	24.22
	12/11	25.00	24.18	24.20	24.08		25/25	25.00	24.18	24.20	24.23
	25/0	25.00	23.95	24.28	24.03		50/0	25.00	24.22	24.32	24.25
LTE B41/BW=15M		Average Conducted Power(dBm)				LTE B41/BW=20M		Average Conducted Power(dBm)			
Modulation	RB Size/Offset	Max. Tune-up (dBm)	Channel/Frequency(MHz)			Modulation	RB Size/Offset	Max. Tune-up (dBm)	Channel/Frequency(MHz)		
			39725/2503.5	40620/2593	41515/2682.5				39750/2506	40620/2593	41490/2680
QPSK	1/0	27.00	26.24	26.18	26.20	QPSK	1/0	27.00	26.23	26.33	26.28
	1/37	27.00	26.27	26.14	26.14		1/49	27.00	26.21	26.31	26.24
	1/74	27.00	26.14	26.27	26.32		1/99	27.00	26.14	26.29	26.21
	36/0	26.00	25.33	25.27	25.29		50/0	26.00	25.32	25.42	25.37
	36/18	26.00	25.32	25.19	25.19		50/24	26.00	25.26	25.36	25.29
	36/35	26.00	25.21	25.34	25.39		50/49	26.00	25.21	25.36	25.28
	75/0	26.00	25.28	25.22	25.24		100/0	26.00	25.27	25.37	25.32
16QAM	1/0	26.00	25.31	25.25	25.27	16QAM	1/0	26.00	25.30	25.40	25.35
	1/37	26.00	25.35	25.22	25.22		1/49	26.00	25.29	25.39	25.32
	1/74	26.00	25.24	25.37	25.42		1/99	26.00	25.24	25.39	25.31
	36/0	25.00	24.39	24.33	24.35		50/0	25.00	24.38	24.48	24.43
	36/18	25.00	24.35	24.22	24.22		50/24	25.00	24.29	24.39	24.32
	36/35	25.00	24.24	24.37	24.42		50/49	25.00	24.24	24.39	24.31
	75/0	25.00	24.31	24.25	24.27		100/0	25.00	24.30	24.40	24.35

P-sensor on

LTE B41/BW=5M		Average Conducted Power(dBm)				LTE B41/BW=10M		Average Conducted Power(dBm)			
Modulation	RB Size/Offset	Max. Tune-up (dBm)	Channel/Frequency(MHz)			Modulation	RB Size/Offset	Max. Tune-up (dBm)	Channel/Frequency(MHz)		
			39675/2498.5	40620/2593	41565/2687.5				39700/2501	40620/2593	41540/2685
QPSK	1/0	21.50	21.23	21.25	21.18	QPSK	1/0	21.50	21.32	21.34	21.28
	1/12	21.50	21.18	21.21	21.16		1/24	21.50	21.28	21.31	21.25
	1/24	21.50	21.06	21.14	21.07		1/49	21.50	21.24	21.27	21.23
	12/0	20.50	20.32	20.34	20.27		25/0	20.50	20.41	20.43	20.37
	12/6	20.50	20.23	20.26	20.21		25/12	20.50	20.33	20.36	20.30
	12/11	20.50	20.13	20.21	20.14		25/24	20.50	20.31	20.34	20.30
	25/0	20.50	20.27	20.29	20.22		50/0	20.50	20.36	20.38	20.32
16QAM	1/0	20.50	20.30	20.32	20.25	16QAM	1/0	20.50	20.39	20.41	20.35
	1/12	20.50	20.26	20.29	20.24		1/24	20.50	20.36	20.39	20.33
	1/24	20.50	20.16	20.24	20.17		1/49	20.50	20.34	20.37	20.33
	12/0	19.50	19.38	19.40	19.33		25/0	19.50	19.47	19.49	19.43
	12/6	19.50	19.26	19.29	19.24		25/12	19.50	19.36	19.39	19.33
	12/11	19.50	19.16	19.24	19.17		25/24	19.50	19.34	19.37	19.33
	25/0	19.50	19.30	19.32	19.25		50/0	19.50	19.39	19.41	19.35
LTE B41/BW=15M		Average Conducted Power(dBm)				LTE B41/BW=20M		Average Conducted Power(dBm)			
Modulation	RB Size/Offset	Max. Tune-up (dBm)	Channel/Frequency(MHz)			Modulation	RB Size/Offset	Max. Tune-up (dBm)	Channel/Frequency(MHz)		
			39725/2503.5	40620/2593	41515/2682.5				39750/2506	40620/2593	41490/2680
QPSK	1/0	21.50	21.28	21.34	21.25	QPSK	1/0	21.50	21.38	21.39	21.36
	1/37	21.50	21.25	21.30	21.20		1/49	21.50	21.32	21.35	21.34
	1/74	21.50	21.21	21.28	21.14		1/99	21.50	21.24	21.33	21.30
	36/0	20.50	20.37	20.43	20.34		50/0	20.50	20.47	20.48	20.45
	36/18	20.50	20.30	20.35	20.25		50/24	20.50	20.37	20.40	20.39
	36/35	20.50	20.28	20.35	20.21		50/49	20.50	20.31	20.40	20.37
	75/0	20.50	20.32	20.38	20.29		100/0	20.50	20.412	20.43	20.40
16QAM	1/0	20.50	20.35	20.41	20.32	16QAM	1/0	20.50	20.45	20.46	20.43
	1/37	20.50	20.33	20.38	20.28		1/49	20.50	20.40	20.43	20.42
	1/74	20.50	20.31	20.38	20.24		1/99	20.50	20.34	20.43	20.40
	36/0	19.50	19.43	19.49	19.40		50/0	19.50	19.53	19.54	19.51
	36/18	19.50	19.33	19.38	19.28		50/24	19.50	19.40	19.43	19.42
	36/35	19.50	19.31	19.38	19.24		50/49	19.50	19.34	19.43	19.40
	75/0	19.50	19.35	19.41	19.32		100/0	19.50	19.45	19.46	19.43

LTE Band 48
P-sensor off

LTE B48/BW=5M		Average Conducted Power(dBm)				LTE B48/BW=10M		Average Conducted Power(dBm)			
Modulation	RB Size/Offset	Max. Tune-up	Channel/Frequency(MHz)			Modulation	RB Size/Offset	Max. Tune-up	Channel/Frequency(MHz)		
			55265/3552.5	55900/3625.0	56715/3697.5				55290/3555	55900/3625	56690/3695
QPSK	1/0	22.00	21.75	21.78	21.75	QPSK	1/0	22.00	21.68	21.73	21.71
	1/12	22.00	21.71	21.74	21.70		1/24	22.00	21.64	21.71	21.65
	1/24	22.00	21.68	21.70	21.68		1/49	22.00	21.60	21.68	21.59
	12/0	21.00	20.84	20.87	20.84		25/0	21.00	20.77	20.82	20.80
	12/6	21.00	20.76	20.79	20.75		25/12	21.00	20.69	20.76	20.70
	12/11	21.00	20.75	20.77	20.75		25/24	21.00	20.67	20.75	20.66
	25/0	21.00	20.79	20.82	20.79		50/0	21.00	20.72	20.77	20.75
16QAM	1/0	21.00	20.82	20.85	20.82	16QAM	1/0	21.00	20.75	20.80	20.78
	1/12	21.00	20.79	20.82	20.78		1/24	21.00	20.72	20.79	20.73
	1/24	21.00	20.78	20.80	20.78		1/49	21.00	20.70	20.78	20.69
	12/0	20.00	19.90	19.93	19.90		25/0	20.00	19.83	19.88	19.86
	12/6	20.00	19.79	19.82	19.78		25/12	20.00	19.72	19.79	19.73
	12/11	20.00	19.78	19.80	19.78		25/25	20.00	19.70	19.78	19.69
	25/0	20.00	19.82	19.85	19.82		50/0	20.00	19.75	19.80	19.78
LTE B48/BW=15M		Average Conducted Power(dBm)				LTE B48/BW=20M		Average Conducted Power(dBm)			
Modulation	RB Size/Offset	Max. Tune-up	Channel/Frequency(MHz)			Modulation	RB Size/Offset	Max. Tune-up	Channel/Frequency(MHz)		
			55315/3557.5	55900/3625	56665/3692.5				55340/3560	56207/3646.7	56640/3690
QPSK	1/0	22.00	21.64	21.68	21.68	QPSK	1/0	22.00	21.84	21.86	21.81
	1/37	22.00	21.61	21.61	21.63		1/49	22.00	21.80	21.83	21.79
	1/74	22.00	21.57	21.56	21.61		1/99	22.00	21.75	21.79	21.73
	36/0	21.00	20.73	20.77	20.77		50/0	21.00	20.93	20.95	20.90
	36/18	21.00	20.66	20.66	20.68		50/24	21.00	20.85	20.88	20.84
	36/35	21.00	20.64	20.63	20.68		50/49	21.00	20.82	20.86	20.80
	75/0	21.00	20.68	20.72	20.72		100/0	21.00	20.88	20.90	20.85
16QAM	1/0	21.00	20.71	20.75	20.75	16QAM	1/0	21.00	20.91	20.93	20.88
	1/37	21.00	20.69	20.69	20.71		1/49	21.00	20.88	20.91	20.87
	1/74	21.00	20.67	20.66	20.71		1/99	21.00	20.85	20.89	20.83
	36/0	20.00	19.79	19.83	19.83		50/0	20.00	19.99	20.01	19.96
	36/18	20.00	19.69	19.69	19.71		50/24	20.00	19.88	19.91	19.87
	36/35	20.00	19.67	19.66	19.71		50/49	20.00	19.85	19.89	19.83
	75/0	20.00	19.71	19.75	19.75		100/0	20.00	19.91	19.93	19.88

LTE Band 48
P-sensor on

LTE B48/BW=5M		Average Conducted Power(dBm)				LTE B48/BW=10M		Average Conducted Power(dBm)			
Modulation	RB Size/Offset	Max. Tune-up	Channel/Frequency(MHz)			Modulation	RB Size/Offset	Max. Tune-up	Channel/Frequency(MHz)		
			55265/3552.5	55900/3625.0	56715/3697.5				55290/3555	55900/3625	56690/3695
QPSK	1/0	21.50	21.18	21.23	21.36	QPSK	1/0	21.50	21.34	21.36	21.33
	1/12	21.50	21.14	21.14	21.32		1/24	21.50	21.22	21.28	21.30
	1/24	21.50	21.10	21.12	21.14		1/49	21.50	21.20	21.26	21.27
	12/0	20.50	20.27	20.32	20.45		25/0	20.50	20.43	20.45	20.42
	12/6	20.50	20.19	20.19	20.37		25/12	20.50	20.27	20.33	20.35
	12/11	20.50	20.17	20.19	20.21		25/24	20.50	20.27	20.33	20.34
	25/0	20.50	20.22	20.27	20.40		50/0	20.50	20.38	20.40	20.37
16QAM	1/0	20.50	20.25	20.30	20.43	16QAM	1/0	20.50	20.41	20.43	20.40
	1/12	20.50	20.22	20.22	20.40		1/24	20.50	20.30	20.36	20.38
	1/24	20.50	20.20	20.22	20.24		1/49	20.50	20.30	20.36	20.37
	12/0	19.50	19.33	19.38	19.51		25/0	19.50	19.49	19.51	19.48
	12/6	19.50	19.22	19.22	19.40		25/12	19.50	19.30	19.36	19.38
	12/11	19.50	19.20	19.22	19.24		25/25	19.50	19.30	19.36	19.37
	25/0	19.50	19.25	19.30	19.43		50/0	19.50	19.41	19.43	19.40
LTE B48/BW=15M		Average Conducted Power(dBm)				LTE B48/BW=20M		Average Conducted Power(dBm)			
Modulation	RB Size/Offset	Max. Tune-up	Channel/Frequency(MHz)			Modulation	RB Size/Offset	Max. Tune-up	Channel/Frequency(MHz)		
			55315/3557.5	55900/3625	56665/3692.5				55340/3560	55900/3625	56640/3690
QPSK	1/0	21.50	21.25	21.28	21.25	QPSK	1/0	21.50	21.38	21.42	21.40
	1/37	21.50	21.21	21.24	21.22		1/49	21.50	21.34	21.40	21.37
	1/74	21.50	21.17	21.18	21.14		1/99	21.50	21.30	21.37	21.33
	36/0	20.50	20.34	20.37	20.34		50/0	20.50	20.47	20.49	20.49
	36/18	20.50	20.26	20.29	20.27		50/24	20.50	20.39	20.45	20.42
	36/35	20.50	20.24	20.25	20.21		50/49	20.50	20.37	20.44	20.40
	75/0	20.50	20.29	20.32	20.29		100/0	20.50	20.42	20.46	20.44
16QAM	1/0	20.50	20.32	20.35	20.32	16QAM	1/0	20.50	20.45	20.49	20.47
	1/37	20.50	20.29	20.32	20.30		1/49	20.50	20.42	20.48	20.45
	1/74	20.50	20.27	20.28	20.24		1/99	20.50	20.40	20.47	20.43
	36/0	19.50	19.40	19.43	19.40		50/0	19.50	19.53	19.57	19.55
	36/18	19.50	19.29	19.32	19.30		50/24	19.50	19.42	19.48	19.45
	36/35	19.50	19.27	19.28	19.24		50/49	19.50	19.40	19.47	19.43
	75/0	19.50	19.32	19.35	19.32		100/0	19.50	19.45	19.49	19.47

LTE Band 66
P-sensor off

LTE B66/BW=1.4M		Average Conducted Power(dBm)				LTE B66/BW=3M		Average Conducted Power(dBm)			
Modulation	RB Size/Offset	Max. Tune-up (dBm)	Channel/Frequency(MHz)			Modulation	RB Size/Offset	Max. Tune-up (dBm)	Channel/Frequency(MHz)		
			131979/1710.7	132322/1745.0	132665/1779.3				131987/1711.5	132322/1745.0	132657/1778.5
QPSK	1/0	24.00	22.02	22.41	22.09	QPSK	1/0	24.00	22.08	22.25	22.04
	1/12	24.00	22.01	22.38	22.05		1/12	24.00	22.04	22.21	22.04
	1/24	24.00	22.02	22.27	22.08		1/49	24.00	22.06	22.18	22.02
	12/0	23.00	21.11	21.50	21.18		25/0	23.00	21.17	21.34	21.13
	12/6	23.00	21.06	21.43	21.10		25/12	23.00	21.09	21.26	21.09
	12/11	23.00	21.09	21.34	21.15		25/24	23.00	21.13	21.25	21.09
	25/0	23.00	21.06	21.45	21.13		50/0	23.00	21.12	21.29	21.08
16QAM	1/0	23.00	21.09	21.48	21.16	16QAM	1/0	23.00	21.15	21.32	21.11
	1/12	23.00	21.09	21.46	21.13		1/24	23.00	21.12	21.29	21.12
	1/24	23.00	21.12	21.37	21.18		1/49	23.00	21.16	21.28	21.12
	12/0	22.00	20.17	20.56	20.24		25/0	22.00	20.23	20.40	20.19
	12/6	22.00	20.09	20.46	20.13		25/12	22.00	20.12	20.29	20.12
	12/11	22.00	20.12	20.37	20.18		25/24	22.00	20.16	20.28	20.12
	25/0	22.00	20.09	20.48	20.16		50/0	22.00	20.15	20.32	20.11
LTE B66/BW=5M		Average Conducted Power(dBm)				LTE B66/BW=10M		Average Conducted Power(dBm)			
Modulation	RB Size/Offset	Max. Tune-up (dBm)	Channel/Frequency(MHz)			Modulation	RB Size/Offset	Max. Tune-up (dBm)	Channel/Frequency(MHz)		
			131997/1712.5	132322/1745	132647/1777.5				132022/1715	132322/1745	132621/1775
QPSK	1/0	24.00	22.04	22.40	22.04	QPSK	1/0	24.00	22.05	22.45	22.03
	1/37	24.00	22.02	22.38	22.43		1/49	24.00	22.04	22.41	22.03
	1/74	24.00	22.04	22.25	22.13		1/99	24.00	22.04	22.38	22.02
	36/0	23.00	21.13	21.49	21.13		50/0	23.00	21.14	21.54	21.12
	36/18	23.00	21.07	21.43	21.48		50/24	23.00	21.09	21.46	21.08
	36/35	23.00	21.11	21.32	21.20		50/49	23.00	21.11	21.45	21.09
	75/0	23.00	21.08	21.44	21.08		100/0	23.00	21.09	21.49	21.07
16QAM	1/0	23.00	21.11	21.47	21.11	16QAM	1/0	23.00	21.12	21.52	21.10
	1/37	23.00	21.10	21.46	21.51		1/49	23.00	21.12	21.49	21.11
	1/74	23.00	21.14	21.35	21.23		1/99	23.00	21.14	21.48	21.12
	36/0	22.00	20.19	20.55	20.19		50/0	22.00	20.20	20.60	20.18
	36/18	22.00	20.10	20.46	20.51		50/24	22.00	20.12	20.49	20.11
	36/35	22.00	20.14	20.35	20.23		50/49	22.00	20.14	20.48	20.12
	75/0	22.00	20.11	20.47	20.11		100/0	22.00	20.12	20.52	20.10

LTE B66/BW=15M		Average Conducted Power(dBm)				LTE B66/BW=20M		Average Conducted Power(dBm)			
Modulation	RB Size/Offset	Max. Tune-up (dBm)	Channel/Frequency(MHz)			Modulation	RB Size/Offset	Max. Tune-up (dBm)	Channel/Frequency(MHz)		
			132047/1717.5	132322/1745	132597/1772.5				132072/1720	132322/1745	132572/1770
QPSK	1/0	24.00	22.18	22.43	22.12	QPSK	1/0	24.00	22.21	22.60	22.12
	1/37	24.00	22.14	22.45	22.08		1/49	24.00	22.18	22.58	22.08
	1/74	24.00	22.16	22.41	22.06		1/99	24.00	22.22	22.51	22.10
	36/0	23.00	21.27	21.52	21.21		50/0	23.00	21.30	21.69	21.21
	36/18	23.00	21.19	21.50	21.13		50/24	23.00	21.23	21.63	21.13
	36/35	23.00	21.23	21.48	21.13		50/49	23.00	21.29	21.58	21.17
	75/0	23.00	21.22	21.47	21.16		100/0	23.00	21.25	21.64	21.16
16QAM	1/0	23.00	21.25	21.50	21.19	16QAM	1/0	23.00	21.28	21.67	21.19
	1/37	23.00	21.22	21.53	21.16		1/49	23.00	21.26	21.66	21.16
	1/74	23.00	21.26	21.51	21.16		1/99	23.00	21.32	21.61	21.20
	36/0	22.00	20.33	20.58	20.27		50/0	22.00	20.36	20.75	20.27
	36/18	22.00	20.22	20.53	20.16		50/24	22.00	20.26	20.66	20.16
	36/35	22.00	20.26	20.51	20.16		50/49	22.00	20.32	20.61	20.20
	75/0	22.00	20.25	20.50	20.19		100/0	22.00	20.28	20.67	20.19

P-sensor on

LTE B66/BW=1.4M		Average Conducted Power(dBm)				LTE B66/BW=3M		Average Conducted Power(dBm)			
Modulation	RB Size/Offset	Max. Tune-up (dBm)	Channel/Frequency(MHz)			Modulation	RB Size/Offset	Max. Tune-up (dBm)	Channel/Frequency(MHz)		
			131979/1710.7	132322/1745.0	132665/1779.3				131987/1711.5	132322/1745.0	132657/1778.5
QPSK	1/0	21.50	21.28	21.31	21.27	QPSK	1/0	21.50	21.34	21.35	21.29
	1/2	21.50	21.21	21.27	21.25		1/7	21.50	21.31	21.28	21.24
	1/5	21.50	21.15	21.25	21.18		1/14	21.50	21.27	21.22	21.20
	3/0	20.50	20.37	20.40	20.36		8/0	20.50	20.43	20.44	20.38
	3/1	20.50	20.26	20.32	20.30		8/4	20.50	20.36	20.33	20.29
	3/2	20.50	20.22	20.32	20.25		8/7	20.50	20.34	20.29	20.27
	6/0	20.50	20.32	20.35	20.31		15/0	20.50	20.38	20.39	20.33
16QAM	1/0	20.50	20.35	20.38	20.34	16QAM	1/0	20.50	20.41	20.42	20.36
	1/2	20.50	20.29	20.35	20.33		1/7	20.50	20.39	20.36	20.32
	1/5	20.50	20.25	20.35	20.28		1/14	20.50	20.37	20.32	20.30
	3/0	19.50	19.43	19.46	19.42		8/0	19.50	19.49	19.50	19.44
	3/1	19.50	19.29	19.35	19.33		8/4	19.50	19.39	19.36	19.32
	3/2	19.50	19.25	19.35	19.28		8/7	19.50	19.37	19.32	19.30
	6/0	19.50	19.35	19.38	19.34		15/0	19.50	19.41	19.42	19.36
LTE B66/BW=5M		Average Conducted Power(dBm)				LTE B66/BW=10M		Average Conducted Power(dBm)			
Modulation	RB Size/Offset	Max. Tune-up (dBm)	Channel/Frequency(MHz)			Modulation	RB Size/Offset	Max. Tune-up (dBm)	Channel/Frequency(MHz)		
			131997/1712.5	132322/1745	132647/1777.5				132022/1715	132322/1745	132621/1775
QPSK	1/0	21.50	21.24	21.25	21.31	QPSK	1/0	21.50	21.23	21.32	21.27
	1/12	21.50	21.17	21.21	21.24		1/24	21.50	21.14	21.25	21.22
	1/24	21.50	21.13	21.15	21.20		1/49	21.50	21.08	21.21	21.14
	12/0	20.50	20.33	20.34	20.40		25/0	20.50	20.32	20.41	20.36
	12/6	20.50	20.22	20.26	20.29		25/12	20.50	20.19	20.30	20.27
	12/11	20.50	20.20	20.22	20.27		25/24	20.50	20.15	20.28	20.21
	25/0	20.50	20.28	20.29	20.35		50/0	20.50	20.27	20.36	20.31
16QAM	1/0	20.50	20.31	20.32	20.38	16QAM	1/0	20.50	20.30	20.39	20.34
	1/12	20.50	20.25	20.29	20.32		1/24	20.50	20.22	20.33	20.30
	1/24	20.50	20.23	20.25	20.30		1/49	20.50	20.18	20.31	20.24
	12/0	19.50	19.39	19.40	19.46		25/0	19.50	19.38	19.47	19.42
	12/6	19.50	19.25	19.29	19.32		25/12	19.50	19.22	19.33	19.30
	12/11	19.50	19.23	19.25	19.30		25/24	19.50	19.18	19.31	19.24
	25/0	19.50	19.31	19.32	19.38		50/0	19.50	19.30	19.39	19.34

LTE B66/BW=15M		Average Conducted Power(dBm)				LTE B66/BW=20M		Average Conducted Power(dBm)			
Modulation	RB Size/Offset	Max. Tune-up (dBm)	Channel/Frequency(MHz)			Modulation	RB Size/Offset	Max. Tune-up (dBm)	Channel/Frequency(MHz)		
			132047/1717.5	132322/1745	132597/1772.5				132072/1720	132322/1745	132572/1770
QPSK	1/0	21.50	21.33	21.34	21.33	QPSK	1/0	21.50	21.38	21.39	21.38
	1/37	21.50	21.31	21.31	21.30		1/49	21.50	21.32	21.36	21.32
	1/74	21.50	21.28	21.26	21.25		1/99	21.50	21.27	21.31	21.31
	36/0	20.50	20.42	20.43	20.42		50/0	20.50	20.47	20.48	20.47
	36/18	20.50	20.36	20.36	20.35		50/24	20.50	20.37	20.41	20.37
	36/35	20.50	20.35	20.33	20.32		50/49	20.50	20.34	20.38	20.38
	75/0	20.50	20.37	20.38	20.37		100/0	20.50	20.42	20.43	20.42
16QAM	1/0	20.50	20.40	20.41	20.40	16QAM	1/0	20.50	20.45	20.46	20.45
	1/37	20.50	20.39	20.39	20.38		1/49	20.50	20.40	20.44	20.40
	1/74	20.50	20.38	20.36	20.35		1/99	20.50	20.37	20.41	20.41
	36/0	19.50	19.48	19.49	19.48		50/0	19.50	19.53	19.54	19.53
	36/18	19.50	19.39	19.39	19.38		50/24	19.50	19.40	19.44	19.40
	36/35	19.50	19.38	19.36	19.35		50/49	19.50	19.37	19.41	19.41
	75/0	19.50	19.40	19.41	19.40		100/0	19.50	19.45	19.46	19.45

LTE Band 71
P-sensor off

LTE B71/BW=5M		Average Conducted Power(dBm)				LTE B71/BW=10M		Average Conducted Power(dBm)			
Modulation	RB Size/Offset	Max. Tune-up	Channel/Frequency(MHz)			Modulation	RB Size/Offset	Max. Tune-up	Channel/Frequency(MHz)		
			133147/665.5	133297/680.5	133447/695.5				133172/668	133297/680.5	133421/693
QPSK	1/0	24.00	22.65	22.61	22.75	QPSK	1/0	24.00	22.65	22.69	22.68
	1/12	24.00	22.62	22.58	22.71		1/24	24.00	22.61	22.64	22.63
	1/24	24.00	22.60	22.54	22.64		1/49	24.00	22.53	22.62	22.58
	12/0	23.00	21.74	21.70	21.84		25/0	23.00	21.74	21.78	21.77
	12/6	23.00	21.67	21.63	21.76		25/12	23.00	21.66	21.69	21.68
	12/11	23.00	21.67	21.61	21.71		25/24	23.00	21.60	21.69	21.65
	25/0	23.00	21.69	21.65	21.79		50/0	23.00	21.69	21.73	21.72
16QAM	1/0	23.00	21.72	21.68	21.82	16QAM	1/0	23.00	21.72	21.76	21.75
	1/12	23.00	21.70	21.66	21.79		1/24	23.00	21.69	21.72	21.71
	1/24	23.00	21.70	21.64	21.74		1/49	23.00	21.63	21.72	21.68
	12/0	22.00	20.80	20.76	20.90		25/0	22.00	20.80	20.84	20.83
	12/6	22.00	20.70	20.66	20.79		25/12	22.00	20.69	20.72	20.71
	12/11	22.00	20.70	20.64	20.74		25/25	22.00	20.63	20.72	20.68
	25/0	22.00	20.72	20.68	20.82		50/0	22.00	20.72	20.76	20.75
LTE B71/BW=15M		Average Conducted Power(dBm)				LTE B71/BW=20M		Average Conducted Power(dBm)			
Modulation	RB Size/Offset	Max. Tune-up	Channel/Frequency(MHz)			Modulation	RB Size/Offset	Max. Tune-up	Channel/Frequency(MHz)		
			133197/670.5	133297/680.5	133397/690.5				133222/673	133322/683	133372/688
QPSK	1/0	24.00	22.60	22.68	22.70	QPSK	1/0	24.00	22.69	22.75	22.68
	1/37	24.00	22.58	22.65	22.68		1/49	24.00	22.68	22.73	22.63
	1/74	24.00	22.53	22.63	22.62		1/99	24.00	22.64	22.74	22.59
	36/0	23.00	21.69	21.77	21.79		50/0	23.00	21.78	21.84	21.77
	36/18	23.00	21.63	21.70	21.73		50/24	23.00	21.73	21.78	21.68
	36/35	23.00	21.60	21.70	21.69		50/49	23.00	21.71	21.81	21.66
	75/0	23.00	21.64	21.72	21.74		100/0	23.00	21.73	21.79	21.72
16QAM	1/0	23.00	21.67	21.75	21.77	16QAM	1/0	23.00	21.76	21.82	21.75
	1/37	23.00	21.66	21.73	21.76		1/49	23.00	21.76	21.81	21.71
	1/74	23.00	21.63	21.73	21.72		1/99	23.00	21.74	21.84	21.69
	36/0	22.00	20.75	20.83	20.85		50/0	22.00	20.84	20.90	20.83
	36/18	22.00	20.66	20.73	20.76		50/24	22.00	20.76	20.81	20.71
	36/35	22.00	20.63	20.73	20.72		50/49	22.00	20.74	20.84	20.69
	75/0	22.00	20.67	20.75	20.77		100/0	22.00	20.76	20.82	20.75

P-sensor on

LTE B71/BW=5M		Average Conducted Power(dBm)				LTE B71/BW=10M		Average Conducted Power(dBm)			
Modulation	RB Size/Offset	Max. Tune-up	Channel/Frequency(MHz)			Modulation	RB Size/Offset	Max. Tune-up	Channel/Frequency(MHz)		
			133147/665.5	133297/680.5	133447/695.5				133172/668	133297/680.5	133421/693
QPSK	1/0	21.50	21.32	21.25	21.25	QPSK	1/0	21.50	21.22	21.25	21.28
	1/12	21.50	21.21	21.20	21.18		1/24	21.50	21.14	21.18	21.22
	1/24	21.50	21.18	21.17	21.16		1/49	21.50	21.06	21.14	21.19
	12/0	20.50	20.41	20.34	20.34		25/0	20.50	20.31	20.34	20.37
	12/6	20.50	20.26	20.25	20.23		25/12	20.50	20.19	20.23	20.27
	12/11	20.50	20.25	20.24	20.23		25/24	20.50	20.13	20.21	20.26
	25/0	20.50	20.36	20.29	20.29		50/0	20.50	20.26	20.29	20.32
16QAM	1/0	20.50	20.39	20.32	20.32	16QAM	1/0	20.50	20.29	20.32	20.35
	1/12	20.50	20.29	20.28	20.26		1/24	20.50	20.22	20.26	20.30
	1/24	20.50	20.28	20.27	20.26		1/49	20.50	20.16	20.24	20.29
	12/0	19.50	19.47	19.40	19.40		25/0	19.50	19.37	19.40	19.43
	12/6	19.50	19.29	19.28	19.26		25/12	19.50	19.22	19.26	19.30
	12/11	19.50	19.28	19.27	19.26		25/25	19.50	19.16	19.24	19.29
	25/0	19.50	19.39	19.32	19.32		50/0	19.50	19.29	19.32	19.35
LTE B71/BW=15M		Average Conducted Power(dBm)				LTE B71/BW=20M		Average Conducted Power(dBm)			
Modulation	RB Size/Offset	Max. Tune-up	Channel/Frequency(MHz)			Modulation	RB Size/Offset	Max. Tune-up	Channel/Frequency(MHz)		
			133197/670.5	133297/680.5	133397/690.5				133222/673	133322/683	133372/688
QPSK	1/0	21.50	21.25	21.28	21.31	QPSK	1/0	21.50	21.34	21.39	21.35
	1/37	21.50	21.23	21.21	21.28		1/49	21.50	21.31	21.34	21.31
	1/74	21.50	21.18	21.14	21.25		1/99	21.50	21.30	21.28	21.24
	36/0	20.50	20.34	20.37	20.40		50/0	20.50	20.43	20.48	20.44
	36/18	20.50	20.28	20.26	20.33		50/24	20.50	20.36	20.39	20.36
	36/35	20.50	20.25	20.21	20.32		50/49	20.50	20.37	20.35	20.31
	75/0	20.50	20.29	20.32	20.35		100/0	20.50	20.38	20.43	20.39
16QAM	1/0	20.50	20.32	20.35	20.38	16QAM	1/0	20.50	20.41	20.46	20.42
	1/37	20.50	20.31	20.29	20.36		1/49	20.50	20.39	20.42	20.39
	1/74	20.50	20.28	20.24	20.35		1/99	20.50	20.40	20.38	20.34
	36/0	19.50	19.40	19.43	19.46		50/0	19.50	19.49	19.54	19.50
	36/18	19.50	19.31	19.29	19.36		50/24	19.50	19.39	19.42	19.39
	36/35	19.50	19.28	19.24	19.35		50/49	19.50	19.40	19.38	19.34
	75/0	19.50	19.32	19.35	19.38		100/0	19.50	19.41	19.46	19.42

9.3. SAR TEST RESULTS

General Notes:

Per KDB447498 D04, all measurement SAR results are scaled to the maximum tune-up tolerance limit to demonstrate compliant.

Per KDB447498 D04, testing of other required channels within the operating mode of a frequency band is not required when the reported 1-g or 10-g SAR for the mid-band or highest output power channel is: ≤ 0.8 W/kg or 2.0 W/kg, for 1-g or 10-g respectively, when the transmission band is ≤ 100 MHz. When the maximum output power variation across the required test channels is $> \frac{1}{2}$ dB, instead of the middle channel, the highest output power channel must be used.

Per KDB865664 D01, for each frequency band, repeated SAR measurement is required only when the measured SAR is ≥ 0.8 W/kg; if the deviation among the repeated measurement is $\leq 20\%$, and the measured SAR < 1.45 W/kg, only one repeated measurement is required.

10 SAR TEST RESULTS

10.1 Body SAR test result

SAR test results of WWAN

WCDMA

P-Sensor	Band	Mode	channel	distance (mm)	Test Position	Max Tune-up (dBm)	AVG Power (dBm)	Area Scan	SAR 1g	Reported SAR 1g	Note
on	UMTS Band II	RMC12.2K	9400	0	Bottom	21.50	21.43	0.661	0.597	0.607	
		RMC12.2K	9262	0	Bottom	21.50	21.36	0.644	0.607	0.627	
		RMC12.2K	9538	0	Bottom	21.50	21.21	0.647	0.598	0.639	
off		RMC12.2K	9400	9	Bottom	24.50	23.75	0.237	0.274	0.326	
on	UMTS Band IV	RMC12.2K	1412	0	Bottom	21.50	21.46	0.398	0.390	0.394	
		RMC12.2K	1312	0	Bottom	21.50	21.39	0.651	0.656	0.673	
		RMC12.2K	1513	0	Bottom	21.50	21.43	0.673	0.680	0.691	
off		RMC12.2K	1312	9	Bottom	24.50	23.96	0.225	0.251	0.284	
on	UMTS Band V	RMC12.2K	4182	0	Bottom	21.50	21.36	0.189	0.179	0.185	
		RMC12.2K	4132	0	Bottom	21.50	21.17	0.164	0.156	0.168	
		RMC12.2K	4233	0	Bottom	21.50	21.20	0.202	0.195	0.209	
off		RMC12.2K	4182	9	Bottom	24.50	23.92	0.081	0.088	0.101	

LTE

P-sensor	Band	Mode	channel	RB	Offset	distance (mm)	Test Position	Max Tune-up (dBm)	AVG Power (dBm)	Area Scan	SAR 1g	Reported SAR 1g	Note
on	LTE Band 2	QPSK20M	18900	1	0	0	Bottom	21.50	21.45	0.779	0.726	0.734	
		QPSK20M	18700	1	0	0	Bottom	21.50	21.38	0.750	0.715	0.735	
		QPSK20M	19100	1	0	0	Bottom	21.50	21.44	0.687	0.649	0.658	
off		QPSK20M	18900	1	0	9	Bottom	23.00	22.04	0.212	0.225	0.281	
on	LTE Band 2	QPSK20M	18900	50	0	0	Bottom	20.50	20.49	0.552	0.558	0.559	
off		QPSK20M	18900	50	0	9	Bottom	22.00	21.11	0.159	0.170	0.209	

P-sensor	Band	Mode	channel	RB	Offset	distance (mm)	Test Position	Max Tune-up (dBm)	AVG Power (dBm)	Area Scan	SAR 1g	Reported SAR 1g	Note
on	LTE Band 4	QPSK20M	20175	1	0	0	Bottom	21.50	21.39	0.820	0.789	0.809	
		QPSK20M	20050	1	0	0	Bottom	21.50	21.33	0.825	0.803	0.835	1
		QPSK20M	20300	1	0	0	Bottom	21.50	21.33	0.863	0.811	0.843	1
		QPSK20M	20175	1	49	0	Bottom	21.50	21.34	0.783	0.760	0.789	1
		QPSK20M	20175	1	99	0	Bottom	21.50	21.31	0.749	0.742	0.775	1
		QPSK20M	20175	100	0	0	Bottom	20.50	20.43	0.653	0.633	0.643	1
		QPSK20M	20300	1	0	0	Bottom	21.50	21.33	0.818	0.809	0.841	2
off		QPSK20M	20175	1	0	9	Bottom	23.00	22.60	0.191	0.256	0.281	
on	LTE Band 4	QPSK20M	20175	50	0	0	Bottom	20.50	20.48	0.651	0.640	0.643	
off		QPSK20M	20175	50	0	9	Bottom	22.00	21.69	0.158	0.243	0.261	

P-sensor	Band	Mode	channel	RB	Offset	distance (mm)	Test Position	Max Tune-up (dBm)	AVG Power (dBm)	Area Scan	SAR 1g	Reported SAR 1g	Note
on	LTE Band 5	QPSK10M	20525	1	0	0	Bottom	21.50	21.43	0.169	0.156	0.159	
		QPSK10M	20450	1	0	0	Bottom	21.50	21.32	0.153	0.144	0.150	
		QPSK10M	20600	1	0	0	Bottom	21.50	21.35	0.185	0.166	0.172	
off		QPSK10M	20525	1	0	9	Bottom	25.00	23.65	0.084	0.093	0.126	
on	LTE Band 5	QPSK10M	20525	25	0	0	Bottom	20.50	20.49	0.132	0.125	0.125	
off		QPSK10M	20525	25	0	9	Bottom	24.00	22.74	0.071	0.077	0.102	

P-sensor	Band	Mode	channel	RB	Offset	distance (mm)	Test Position	Max Tune-up (dBm)	AVG Power (dBm)	Area Scan	SAR 1g	Reported SAR 1g	Note
on	LTE Band 7	QPSK20M	21100	1	0	0	Bottom	21.50	21.43	0.575	0.541	0.550	
		QPSK20M	20850	1	0	0	Bottom	21.50	21.38	0.504	0.505	0.519	
		QPSK20M	21350	1	0	0	Bottom	21.50	21.40	0.577	0.570	0.583	
off		QPSK20M	21100	1	0	9	Bottom	24.00	23.22	0.279	0.191	0.229	
on	LTE Band 7	QPSK20M	21100	50	0	0	Bottom	20.50	20.49	0.458	0.445	0.446	
off		QPSK20M	21100	50	0	9	Bottom	23.00	22.31	0.159	0.150	0.176	

P-sensor	Band	Mode	channel	RB	Offset	distance (mm)	Test Position	Max Tune-up (dBm)	AVG Power (dBm)	Area Scan	SAR 1g	Reported SAR 1g	Note
on	LTE Band 12	QPSK10M	23095	1	0	0	Bottom	21.50	21.36	0.050	0.047	0.048	
		QPSK10M	23060	1	0	0	Bottom	21.50	21.34	0.051	0.047	0.048	
		QPSK10M	23130	1	0	0	Bottom	21.50	21.34	0.050	0.046	0.048	
off		QPSK10M	23095	1	0	9	Bottom	25.00	23.73	0.026	0.027	0.036	
on	LTE Band 12	QPSK10M	23095	25	0	0	Bottom	20.50	20.45	0.040	0.037	0.038	
off		QPSK10M	23095	25	0	9	Bottom	24.00	22.82	0.022	0.022	0.029	

P-sensor	Band	Mode	channel	RB	Offset	distance (mm)	Test Position	Max Tune-up (dBm)	AVG Power (dBm)	Area Scan	SAR 1g	Reported SAR 1g	Note
on	LTE Band 13	QPSK10M	23230	1	0	0	Bottom	21.50	21.43	0.084	0.079	0.080	
off		QPSK10M	23230	1	0	9	Bottom	24.00	23.04	0.040	0.040	0.050	
on	LTE Band 13	QPSK10M	23230	25	0	0	Bottom	20.50	20.39	0.071	0.067	0.069	
off		QPSK10M	23230	25	0	9	Bottom	23.00	22.13	0.034	0.034	0.042	

P-sensor	Band	Mode	channel	RB	Offset	distance (mm)	Test Position	Max Tune-up (dBm)	AVG Power (dBm)	Area Scan	SAR 1g	Reported SAR 1g	Note
on	LTE Band 14	QPSK10M	23330	1	0	0	Bottom	21.50	21.43	0.355	0.296	0.301	
off		QPSK10M	23330	1	0	9	Bottom	25.00	23.69	0.049	0.048	0.065	
on	LTE Band 14	QPSK10M	23330	25	0	0	Bottom	20.50	20.49	0.285	0.237	0.238	
off		QPSK10M	23330	25	0	9	Bottom	24.00	22.78	0.042	0.040	0.053	

P-sensor	Band	Mode	channel	RB	Offset	distance (mm)	Test Position	Max Tune-up (dBm)	AVG Power (dBm)	Area Scan	SAR 1g	Reported SAR 1g	Note
on	LTE Band 17	QPSK10M	23790	1	0	0	Bottom	21.50	21.42	0.049	0.047	0.048	
		QPSK10M	23780	1	0	0	Bottom	21.50	21.35	0.048	0.047	0.049	
		QPSK10M	23800	1	0	0	Bottom	21.50	21.39	0.048	0.047	0.048	
off	LTE Band 17	QPSK10M	23790	1	0	9	Bottom	25.00	23.74	0.023	0.021	0.028	
on		QPSK10M	23790	25	0	0	Bottom	20.50	20.49	0.038	0.038	0.038	
off		QPSK10M	23790	25	0	9	Bottom	24.00	22.83	0.018	0.017	0.022	

P-sensor	Band	Mode	channel	RB	Offset	distance (mm)	Test Position	Max Tune-up (dBm)	AVG Power (dBm)	Area Scan	SAR 1g	Reported SAR 1g	Note
on	LTE Band 25	QPSK20M	26365	1	0	0	Bottom	21.50	21.42	0.749	0.699	0.712	
		QPSK20M	26140	1	0	0	Bottom	21.50	21.36	0.748	0.704	0.727	
		QPSK20M	26590	1	0	0	Bottom	21.50	21.39	0.738	0.703	0.721	
		off	QPSK20M	26365	1	0	9	Bottom	23.00	22.10	0.193	0.258	0.317
on	LTE Band 25	QPSK20M	26365	50	0	0	Bottom	20.50	20.49	0.598	0.575	0.576	
off		QPSK20M	26365	50	0	9	Bottom	22.00	21.19	0.155	0.171	0.206	

P-sensor	Band	Mode	channel	RB	Offset	distance (mm)	Test Position	Max Tune-up (dBm)	AVG Power (dBm)	Area Scan	SAR 1g	Reported SAR 1g	Note
on	LTE Band 26	QPSK15M	26915	1	0	0	Bottom	21.50	21.43	0.147	0.139	0.141	
		QPSK15M	26765	1	0	0	Bottom	21.50	21.38	0.133	0.125	0.129	
		QPSK15M	26965	1	0	0	Bottom	21.50	21.39	0.169	0.153	0.157	
		off	QPSK15M	26915	1	0	9	Bottom	25.00	24.85	0.087	0.085	0.088
on	LTE Band 26	QPSK15M	26915	36	0	0	Bottom	20.50	20.49	0.128	0.116	0.116	
off		QPSK15M	26915	36	0	9	Bottom	24.00	23.94	0.074	0.071	0.072	

P-sensor	Band	Mode	channel	RB	Offset	distance (mm)	Test Position	Max Tune-up (dBm)	AVG Power (dBm)	Area Scan	SAR 1g	Reported SAR 1g	Note
on	LTE Band 30	QPSK10M	27710	1	0	0	Bottom	21.50	21.38	0.367	0.355	0.365	
off		QPSK10M	27710	1	0	9	Bottom	23.00	22.84	0.090	0.106	0.110	
on	LTE Band 30	QPSK10M	27710	25	0	0	Bottom	20.50	20.47	0.290	0.285	0.287	
off		QPSK10M	27710	25	0	9	Bottom	22.00	21.93	0.074	0.084	0.085	

P-sensor	Band	Mode	channel	RB	Offset	distance (mm)	Test Position	Max Tune-up (dBm)	AVG Power (dBm)	Area Scan	SAR 1g	Reported SAR 1g	Note
on	LTE Band 38	QPSK20M	38000	1	0	0	Bottom	21.50	21.41	0.265	0.256	0.261	
		QPSK20M	37850	1	0	0	Bottom	21.50	21.36	0.248	0.238	0.246	
		QPSK20M	38150	1	0	0	Bottom	21.50	21.40	0.298	0.269	0.275	
off	LTE Band 38	QPSK20M	38000	1	0	9	Bottom	24.00	23.86	0.097	0.094	0.097	
on		QPSK20M	38000	50	0	0	Bottom	20.50	20.49	0.217	0.206	0.206	
off		QPSK20M	38000	50	0	9	Bottom	23.00	22.95	0.081	0.084	0.085	

P-sensor	Band	Mode	channel	RB	Offset	distance (mm)	Test Position	Max Tune-up (dBm)	AVG Power (dBm)	Area Scan	SAR 1g	Reported SAR 1g	Note
on	LTE Band 41	QPSK20M	40620	1	0	0	Bottom	21.50	21.39	0.255	0.247	0.253	
		QPSK20M	39750	1	0	0	Bottom	21.50	21.38	0.202	0.197	0.203	
		QPSK20M	41490	1	0	0	Bottom	21.50	21.36	0.327	0.323	0.334	
off	LTE Band 41	QPSK20M	40620	1	0	9	Bottom	24.00	23.32	0.155	0.152	0.178	
		QPSK20M	40620	1	0	9	Bottom	27.00	26.33	0.252	0.244	0.285	
on	LTE Band 41	QPSK20M	40620	50	0	0	Bottom	20.50	20.48	0.212	0.212	0.213	
off		QPSK20M	40620	50	0	9	Bottom	23.00	22.27	0.127	0.124	0.147	
		QPSK20M	40620	50	0	9	Bottom	26.00	25.42	0.206	0.200	0.229	

P-sensor	Band	Mode	channel	RB	Offset	distance (mm)	Test Position	Max Tune-up (dBm)	AVG Power (dBm)	Area Scan	SAR 1g	Reported SAR 1g	Note
on	LTE Band 48	QPSK20M	55990	1	0	0	Bottom	21.50	21.42	0.462	0.464	0.473	
		QPSK20M	55340	1	0	0	Bottom	21.50	21.38	0.505	0.502	0.516	
		QPSK20M	56640	1	0	0	Bottom	21.50	21.40	0.408	0.415	0.425	
off	LTE Band 48	QPSK20M	55990	1	0	9	Bottom	22.00	21.86	0.099	0.173	0.179	
on		QPSK20M	55990	50	0	0	Bottom	20.50	20.49	0.378	0.391	0.392	
off		QPSK20M	55990	50	0	9	Bottom	21.00	20.95	0.084	0.143	0.145	

P-sensor	Band	Mode	channel	RB	Offset	distance (mm)	Test Position	Max Tune-up (dBm)	AVG Power (dBm)	Area Scan	SAR 1g	Reported SAR 1g	Note
on	LTE Band 66	QPSK20M	132322	1	0	0	Bottom	21.50	21.39	0.558	0.563	0.577	
		QPSK20M	132072	1	0	0	Bottom	21.50	21.38	0.606	0.586	0.602	
		QPSK20M	132572	1	0	0	Bottom	21.50	21.38	0.546	0.548	0.563	
off	LTE Band 66	QPSK20M	132322	1	0	9	Bottom	24.00	22.60	0.191	0.187	0.258	
on		QPSK20M	132322	50	0	0	Bottom	20.50	20.48	0.453	0.456	0.458	
off		QPSK20M	132322	50	0	9	Bottom	23.00	21.69	0.160	0.155	0.210	

P-sensor	Band	Mode	channel	RB	Offset	distance (mm)	Test Position	Max Tune-up (dBm)	AVG Power (dBm)	Area Scan	SAR 1g	Reported SAR 1g	Note
on	LTE Band 71	QPSK20M	133322	1	0	0	Bottom	21.50	21.39	0.070	0.062	0.064	
		QPSK20M	133222	1	0	0	Bottom	21.50	21.34	0.079	0.070	0.073	
		QPSK20M	133372	1	0	0	Bottom	21.50	21.35	0.063	0.057	0.059	
off	LTE Band 71	QPSK20M	133322	1	0	9	Bottom	24.00	22.75	0.043	0.041	0.054	
on		QPSK20M	133322	50	0	0	Bottom	20.50	20.48	0.057	0.051	0.051	
off		QPSK20M	133322	50	0	9	Bottom	23.00	21.84	0.034	0.031	0.041	

Note:

- Highest reported SAR is > 0.8 W/kg. Added second highest power channel for this test position
- Repeated measurements are required only when the measured SAR is ≥ 0.80 W/kg. If the measured SAR values are < 1.45 W/kg with $\leq 20\%$ variation, only one repeated measurement is required to reaffirm that the results are not expected to have substantial variations, which may introduce significant compliance concerns. (Per KDB 865664 D01 SAR measurement 100 MHz to 6 GHz v01r04)
Original SAR = 0.811 W/kg, therefore second times repeat SAR is required.
Repeat SAR = 0.809 W/kg < 1.45 W/kg
SAR variation = -0.25% < 20%

11. Test Layout

Specific Absorption Rate Test Layout

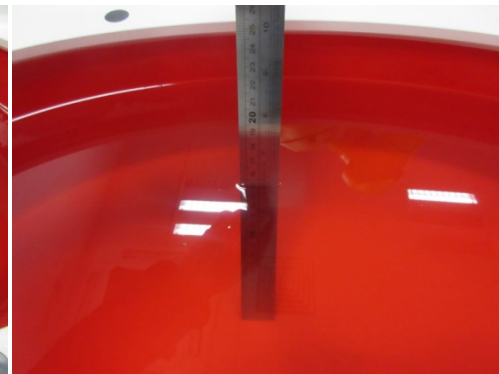


Liquid depth in the flat Phantom ($\geq 15\text{cm}$ depth)
HSL(750MHz)

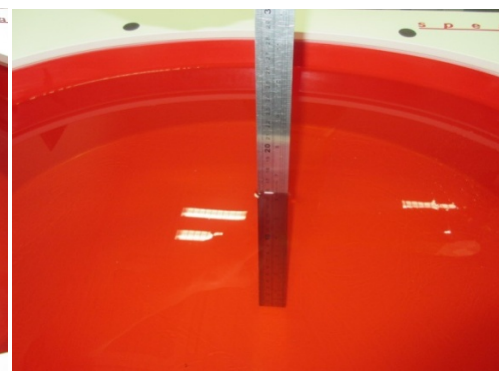
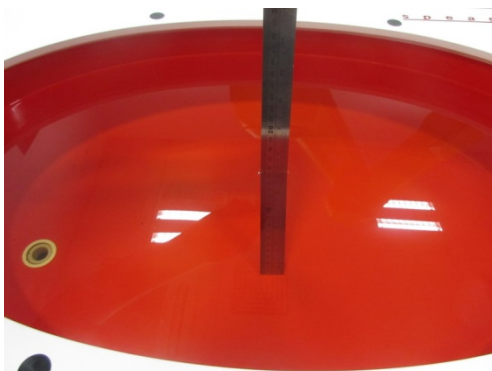
HSL(900MHz)



HSL(1750-2600MHz)



HSL(3500-3700MHz)



Appendix A. SAR Plots of System Verification

(Pls See BTL-FCC SAR-1-2107T083B_Appendix A.)

Appendix B. SAR Plots of SAR Measurement

(Pls See BTL-FCC SAR-1-2107T083B_Appendix B.)

Appendix C. Calibration Certificate

(Pls See BTL-FCC SAR-1-2107T083B_Appendix C.)

Appendix D. Photographs of the Test Set-Up

(Pls See BTL-FCC SAR-1-2107T083B_Appendix D.)

End of Test Report