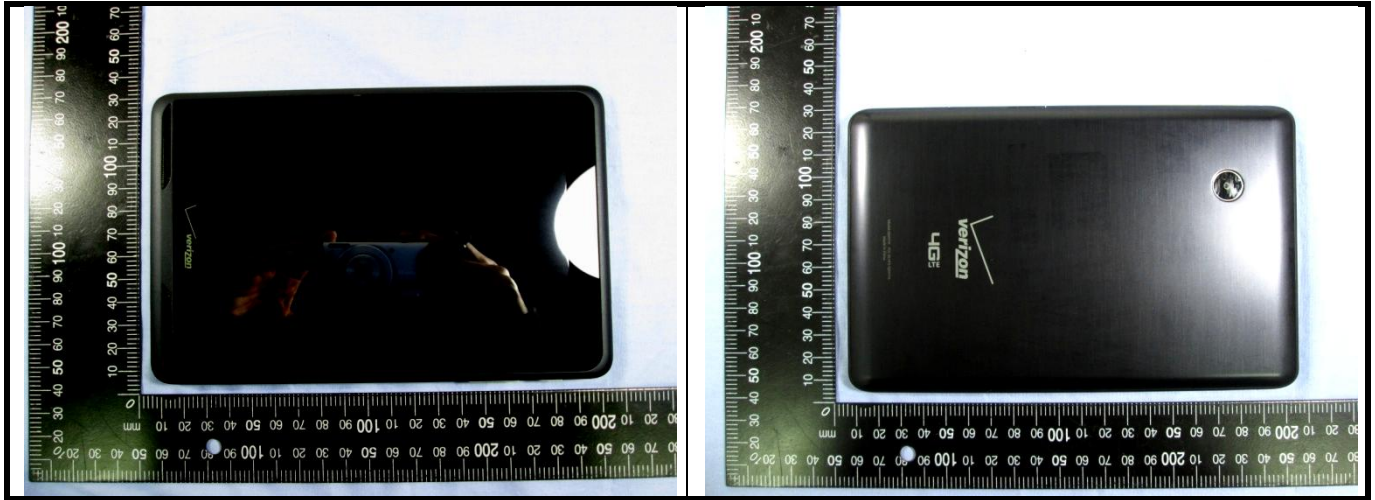




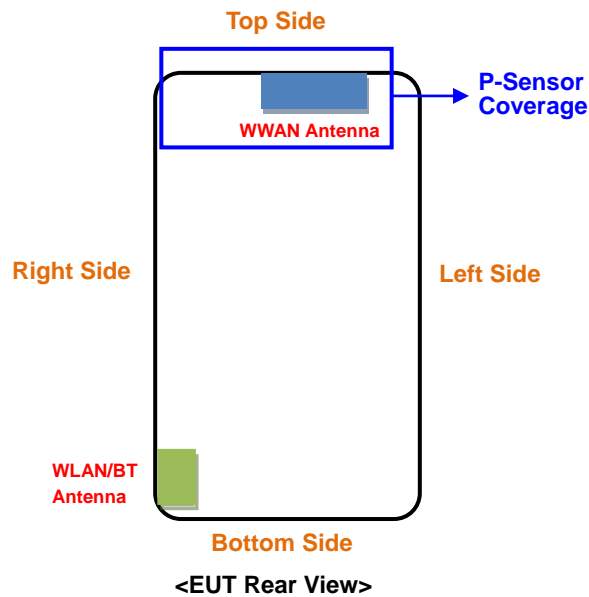
Appendix D. Photographs of EUT and Setup

FCC SAR Test Report

<Photographs of EUT>



<Antenna Location>



The separation distance for antenna to edge:

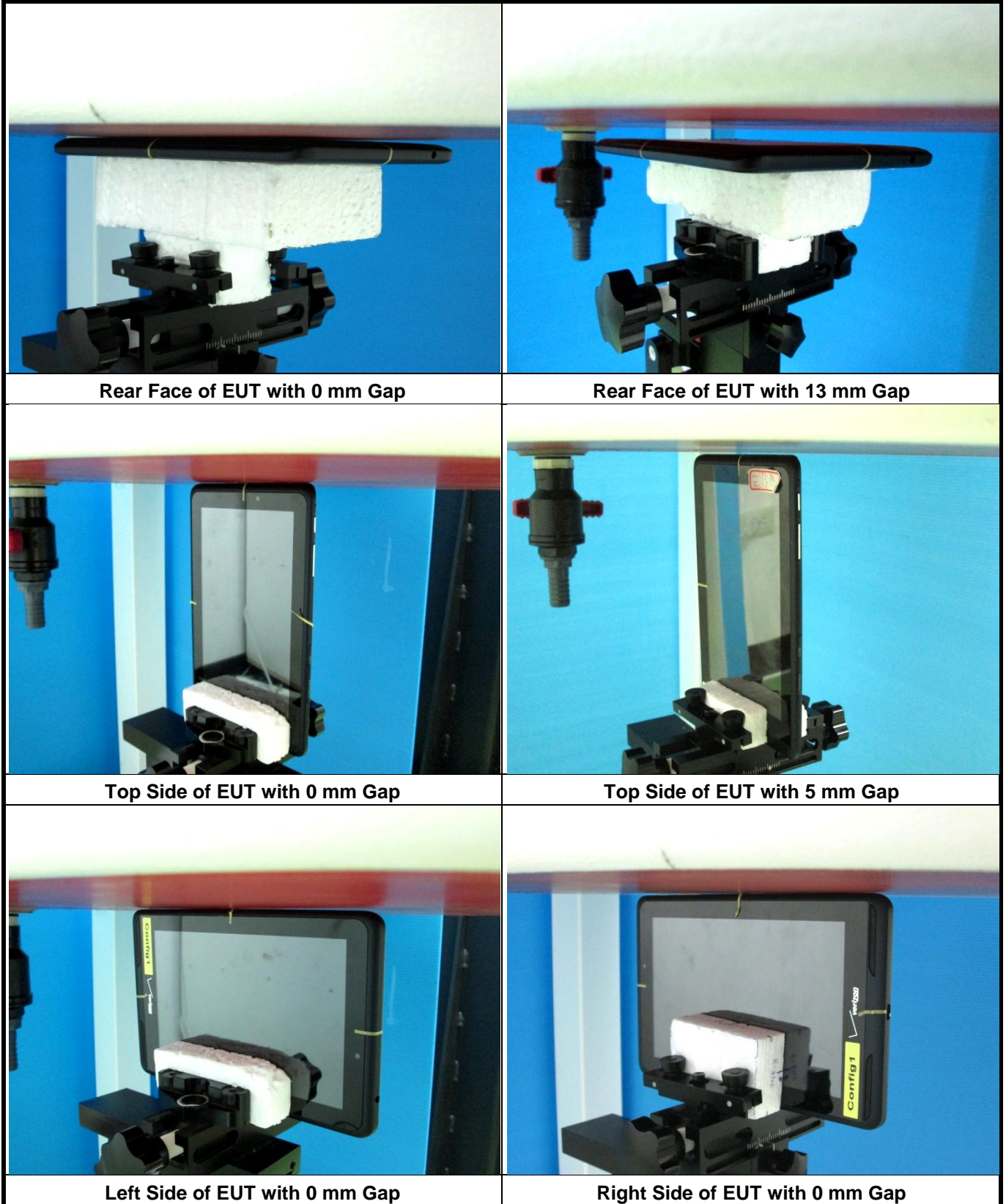
Antenna	To Top Side (mm)	To Bottom Side (mm)	To Left Side (mm)	To Right Side (mm)
WWAN	5	182.1	15.7	44.5
WLAN / BT	168.5	5	103.5	5

Note:

Since the technical document related to the design of proximity sensor and power reduction is confidential, the detail about proximity sensor does not be described in this SAR report. Please refer to the technical documents as "Proximity Sensor Technical Description" for the details.

FCC SAR Test Report

<Photographs of SAR Setup>





Bottom Side of EUT with 0 mm Gap