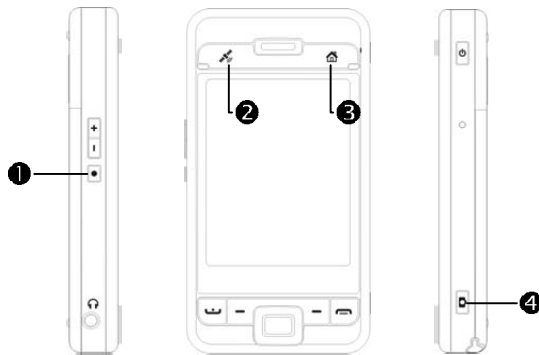




## Redefine Hot Keys

Tap  **Settings**, the **Personal** tab, and then **Buttons**.



These hot keys can be redefined as launch keys for frequently used programs.

 **End Button** and  **Send Button** are exclusive phone functions so they cannot be redefined.

## 6 Microsoft ActiveSync /

---

Using Microsoft<sup>®</sup> ActiveSync<sup>™</sup>, you can *synchronize* the information on your desktop computer with the information on your device. Synchronization compares the data on your device with your desktop computer and updates both computers with the most recent information. For example:

- Keep Pocket Outlook data up-to-date by synchronizing your Pocket PC with Microsoft Outlook data on your desktop computer.
- Synchronize Microsoft Word and Microsoft Excel files between your Pocket PC and desktop computer. Your files are automatically converted to the correct format.
- By default, ActiveSync does not automatically synchronize all types of information. Use ActiveSync options to turn synchronization on and off for specific information type.

With ActiveSync, you can also:

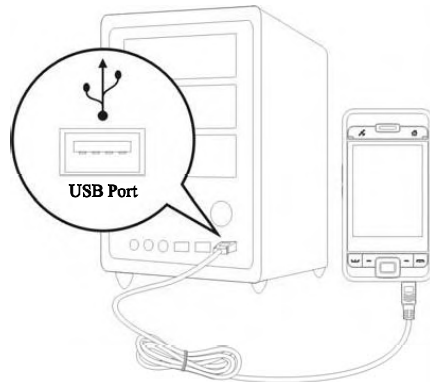
- Back up and restore your Pocket PC data.
- Copy (rather than synchronize) files between your device and desktop computer.
- Control when synchronization occurs by selecting a synchronization mode. For example, you can synchronize continually while connected to your desktop computer or only when you choose the synchronize command.
- Select which information types are synchronized and control how much data is synchronized. For example, you can choose how many weeks of past appointments you want synchronized.

## Installing and Using ActiveSync


### Important Installation Notice

Before you install ActiveSync, make sure that the USB cable on the Pocket PC is not connected to the personal computer. Connect the USB cable only after ActiveSync is installed.

- 1. Installing ActiveSync:** You could use the Getting Started CD to install Microsoft ActiveSync version 4.1 or above on the personal computer. ActiveSync is already installed on your Pocket PC.
- 2. Hardware installation:** The USB cable is a plug-and-play device. Use the USB cable to connect your Pocket PC to your personal computer.



### 3. Using ActiveSync

- ❶ After installation is complete, the ActiveSync Setup Wizard helps you customize your synchronization settings.
- ❷ Once you use the USB cable to connect the two devices properly, the Set Up a Partnership screen appears on the personal computer. Set it up according to your requirements. The green icon  appears on the status bar of your personal computer to indicate that it is Connected.
- ❸ Click **Explore** on the Microsoft ActiveSync on the personal computer to access files in the Pocket PC. Just like using a personal computer, manage the files in the two devices.



- ❹ Windows 95 and Windows NT do not support USB connection.

## ActiveSync Frequently Asked Questions

---

Tap , **Settings**, the **Connections** tab, and then **USB to PC**.



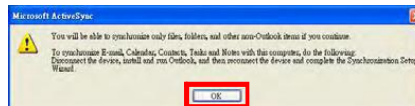
1. **Factory setting defaults to checking the box.**
2. **If you have followed the above installation and operation procedures and find that the connection between your Pocket PC and desktop PC still cannot be established, please uncheck the box shown on the left.**

## USB Synchronization

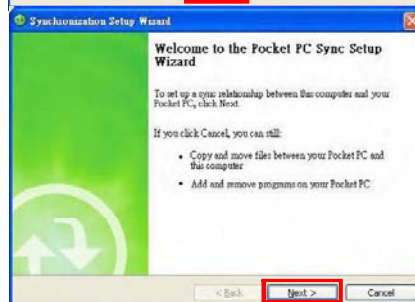
Before you start to synchronize, use the Pocket PC Getting Started CD to install ActiveSync on your personal computer. For more information on how to install ActiveSync, please refer to the ActiveSync CD or online help. ActiveSync is already installed on your Pocket PC.

**ActiveSync synchronization settings:**

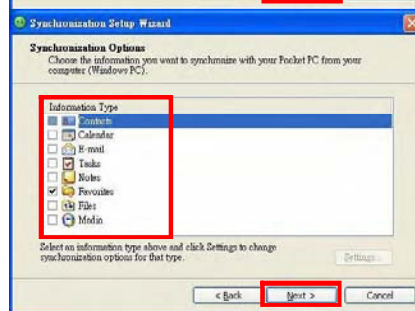
- 1. After installation is complete, the Setup Wizard will continue to guide you. Adjust the specifications according to your actual needs.**
- 2. Use the USB cable to connect the two devices properly and the Set Up a Partnership screen appears on the personal computer. Set it up according to your requirements.**



➊ Click OK.



➋ Click Next.



➌ Check the items you want to synchronize.


➍ Click Next.




⑤ Click **Finish**.




⑥ After installation is complete, the ActiveSync Setup Wizard helps you connect your Pocket PC to your desktop computer, set up a partnership so you can synchronize information between your Pocket PC and your desktop computer, and customize your synchronization settings. Your first synchronization process will automatically begin when you finish using the wizard.

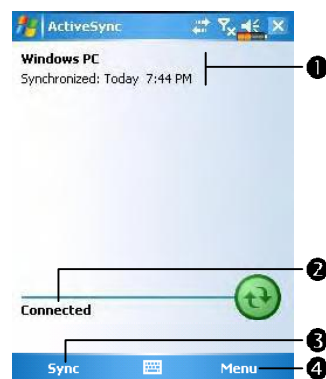
⑦ The green icon  appears on the status bar of the personal computer to indicate that it is Connected.


After your first synchronization, take a look at **Calendar**, **Contacts**, and **Tasks** on your Pocket PC. You'll notice that information you've stored in Microsoft Outlook on your desktop computer has been copied to your device, and you didn't have to type a word. Disconnect your Pocket PC from your computer and you're ready to go!

Once you have set up ActiveSync and completed the first synchronization process, you can initiate synchronization from your Pocket PC. To switch to ActiveSync on your Pocket PC, tap , and then tap **ActiveSync**.

For more information on how to use ActiveSync on your personal computer, run **ActiveSync** and refer to the **ActiveSync** online help. To learn more about the Pocket PC **ActiveSync**, switch to **ActiveSync** and tap  and then **Help**. Just refer to the **Help** for more information.

After the synchronization is complete, tap **Calendar**, **Contacts**, and **Tasks** on the Pocket PC to view if the information saved in Microsoft Outlook on the personal computer is already copied to the Pocket PC.



On the Pocket PC site: Tap  **Programs** and then **ActiveSync**.

- ① View synchronization status.
- ② View connection status.
- ③ Tap to connect and synchronize.
- ④ Tap to synchronize via Bluetooth or change synchronization settings.

## Synchronizing using Bluetooth

Without using the USB cable to connect the two devices, you can still synchronize using Bluetooth. The greatest advantage is that you don't have to plug in and detach from the USB cable so often. This is especially useful for managing several Pocket PCs. For details on Bluetooth devices, refer to "Using Bluetooth" section.





## **7 Connections /**

---


### **Connecting to the Internet**

This section teaches you how to use GPRS wireless network connection. GPRS wireless networking is a convenient function for working at home or while traveling. You can use the Pocket PC to browse websites and read or send E-mails, SMS or MSN messages.

Make sure that your telecom company provides this service and apply for a SIM with GPRS function. If you already have a SIM card, all you need to do is apply for the GPRS function from your service provider. Current SIM cards can support GPRS networking functions.

### **Connection Wizard**


---

Generally, you will only need to install the SIM card to your Pocket PC to simultaneously use the mobile phone functions. The system will automatically add the connection items for this SIM card. To verify: Tap  **Settings**, the **Connections** tab, **Connections**, and then "Manage existing connections," the list will show the newly added network name.

If the system is unable to successfully add the connection to your SIM card, it is possible to use **Connection Wizard**.

Tap  **Settings**, the **Connections** tab, and then **Connection Wizard**.



1. Select the country name from the list.
2. Select the carrier name from the list.
3. According to actual requirements, select the carrier name, and then tap **Add Button** or **Edit Button**. Or use the **New Button** to add the new network connection.
4. **Search Button**: Detect the currently available telecommunication service. If it is found, use the **Add Button** to add the highlighted selection. If it is not found, the “New network” screen will be shown; please manually setup the network.
5. **Recovery Button**: Restore to the original setup value.
6. Tap  **Settings**, the **Connections** tab, **Connections**, and then “Manage existing connections,” the list will show the newly added network name.

## Setting the GPRS Connection

Tap , **Settings**, the **Connections** tab, **Connections**, and then the **Tasks** tab.



1. As shown in the screen on the left tap “Add a new modem connection.”



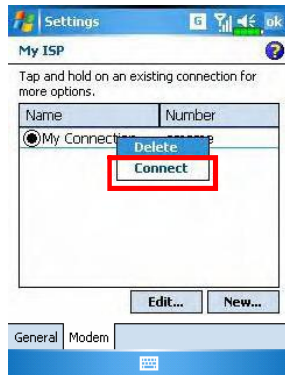
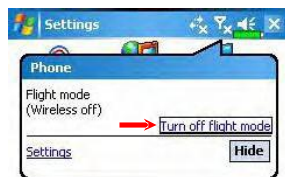
2. Enter the “Make New Connection” screen as shown in the screen on the left.




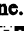





- ① Input a new connection name for convenience in making connections in the future.
- ② Select “Cellular Line (GPRS).”
- ③ Lastly tap Next.



3. Input the Access Point Name provided by your telecom company and tap Next.
4. Input your personal information such as account number, and tap Finish.

## Starting GPRS Connection




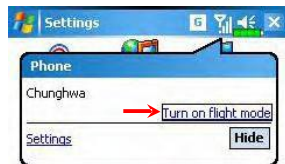
1. Tap the  or  icon at the top of the screen and when a message window appears tap “Turn off flight mode” and input your PIN to turn on the Phone. The  icon will change to  while the  icon changes to .
2. Tap  then tap **Settings** to link to **Connections**. You are ready to connect GPRS.
3. Select “Manage existing connections” in **Connections**. Tap and hold on the newly created connection name, and then select **Connect** to finish GPRS connection.
4. Input your account information in the Logon Network screen and tap to login to the network.
5. After the connection is established, the  icon will change to .
6. Now you can use the appropriate program to access the Internet, receive or send E-mails, etc.


## Disconnecting GPRS

---



1. Disconnect GPRS: Tap  and the message window appears. Tap **Disconnect**.



2. Turn off Phone: Tap  and the message window appears. Tap **“Turn on flight mode.”**

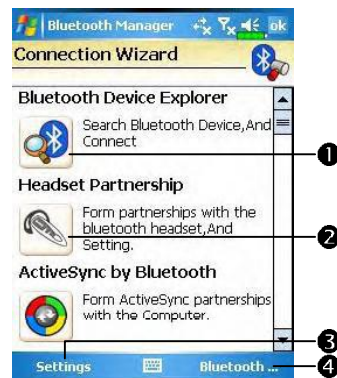
## Using Bluetooth

Bluetooth is a short-distance wireless communication technology with an effective range under 10 meters (30 feet). When you enable Bluetooth function, the blue LED blinks once every 4 seconds.



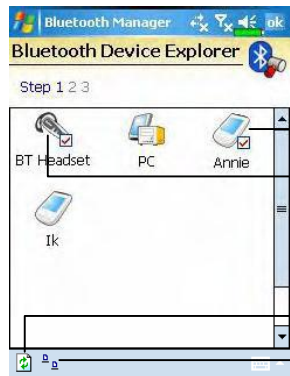
## Bluetooth Connection Wizard

Tap Programs, Utilities, and then Bluetooth Manager.



- 1 Tap on any one of the icons on the left side of the Wizard screen, the system will ask you if you would like to activate Bluetooth. After activation, the LED indicator on the upper left will flash blue.
- 2 Tap here and the system will search for all nearby Bluetooth headsets.
- 3 Tap to configure your Bluetooth device.
- 4 Tap to enter the Bluetooth device pairing screen.





☰ All nearby Bluetooth devices found by the system.

① Tap on any one of the shortcut icons and you will be able to follow the on-screen instructions to pair with that particular device. Devices that have already been paired with are shown with a .

② Tap on one of the icons which represent a Bluetooth headset, when a  is shown, it means that you may use that particular Bluetooth headset.

⌂ Refresh Search Button: re-scan for all nearby Bluetooth devices.

⌂ Change viewing method.

☰ Tap Bluetooth Manager Button in the Wizard Mode screen to enter this screen.

① The system will search once again and add to the number of the devices that you may pair with.

② Return to Bluetooth Wizard.

③ Tap to configure your Bluetooth device.



①

②

③

## Bluetooth Connection Setting

---

Tap **Settings** Button in the Bluetooth Wizard screen to display the **Bluetooth Settings** screen.



Tap the **General** tab

### 1. Bluetooth Status

1 Tap **Open** to enable Bluetooth function.

2 Tap **Close** to disable Bluetooth function.

Make sure that you disable Bluetooth function when you need to save power or if you are in locations such as an airplane or hospital that ban the use of wireless devices.

### 2. Device Identify

1 **Name:** Other devices supporting Bluetooth can identify your Pocket PC by this name.

2 **Address:** This is the unique address of your Pocket PC.

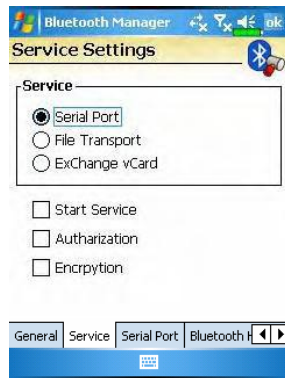
### 3. Access

1 Check **“Discoverable”**: Within an effective range of 10 meters (30 feet), all devices supporting Bluetooth can detect your Pocket PC and data transmission is performed with confirmation from the other party.

2 Uncheck **“Discoverable”**: Your Pocket PC can transmit data to other devices but other devices cannot detect your Pocket PC.

## Service

---



Tap the Service tab

Provide the settings about services of serial port, file transport and exchange vCard.

## Serial Port

If you have Bluetooth GPS software, use the product as instructed and refer to the accompanied documentation and this section to register your Pocket PC as an effective serial port or search for other serial ports.



Tap the Serial Port tab

### Register new serial port

1. Tap Add to enter the Settings screen.

If you no longer need to use a registered serial port, tap this serial port under the “Name” column to highlight and then tap Delete to delete it.

2. The figure on the left shows the settings screen for registering a new serial port.

If you select COM for the “Name” field, then the valid options for the “Index” field are 0, 2, 4, 6 and 7.

If you select BTS for the “Name” field, then the valid options for the “Index” field are 0 to 9.



## Bluetooth Headset

---



Tap the **Bluetooth Headset** tab

1. Select a headset from the paired list.
2. Check "Use Headset."

## FTP Sharing

---



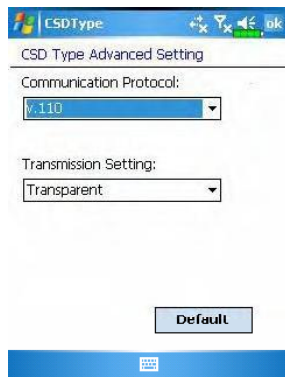
Tap the **FTP** tab

Specify one of the folders on your Pocket PC as a shared directory.

## CSD Type

Tap , **Settings**, the **Connections** tab, and then **CSD Type**.

You must first apply for Circuit-Switched Data (CSD) service from your telecom company before you can use this function. In short, this function is similar to the modem dial-up in a personal computer. By simulating the Pocket PC as a modem and connecting through the built-in GSM device, you can use the Pocket PC to access the web.




 This figure is for reference only.

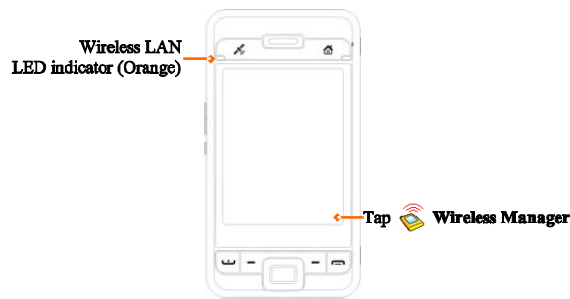
The parameters shown in the screen will be based on the settings provided by your telecom company. The charge rate is regulated by your telecom company.

## Connecting with a Personal Computer

For more information, refer to “Microsoft ActiveSync” section.

### Wireless LAN Transmission

Tap the **Wireless Manager** icon  on the lower right corner of the Today screen. For more information, refer to “Using Wireless LAN” section.




## **8 Using Wireless LAN /**

---

### **Connecting to Wireless LAN**

This section teaches you how to use the Pocket PC's built-in wireless LAN function to connect to the Internet. It is convenient for you to browse websites and send/receive E-mails through wireless networks at certain locations where wireless networking services are provided.

When you purchase credits for connecting to the Internet through a wireless LAN, you will be given the following information: an IP address, DNS name server address, Proxy server, port, and network key, etc. You need this information to setup and activate your connection. In some cases, you may need additional information to use a company's wireless connection, please confirm with the network administrator in your company.

If this is your first time using the wireless LAN function, firstly you should refer to the following "Configure Your Wireless Network" section for instructions for the necessary configuration settings. After you have completed the one-time configuration process, you only need to select the  icon in the **Wireless Manager** main menu for subsequent connections.




☛ Select the  icon on the bottom right of the Today screen.

☛ Tap  Programs and then Wireless Manager.



① This icon will show up on your screen whenever your Pocket PC has detected a usable wireless network and has connected to that network, indicating that your Pocket PC has successfully connected to the network hotspot (Access Point). At this point, the indicator on the upper left of your Pocket PC will flash orange.

② Tap to enter the setup screen.

③ Tap to connect or disconnect to your wireless network, a  means that this function has been disabled.

☛ When the screen shown on the left appears, please choose a wireless network that you can use, and then tap OK Button. Then, select Work, and tap Connect Button.

The first time you use the wireless LAN function, your system will ask you to set the above mentioned settings, after that, your system will continually use the settings from your most recent successful connection.

