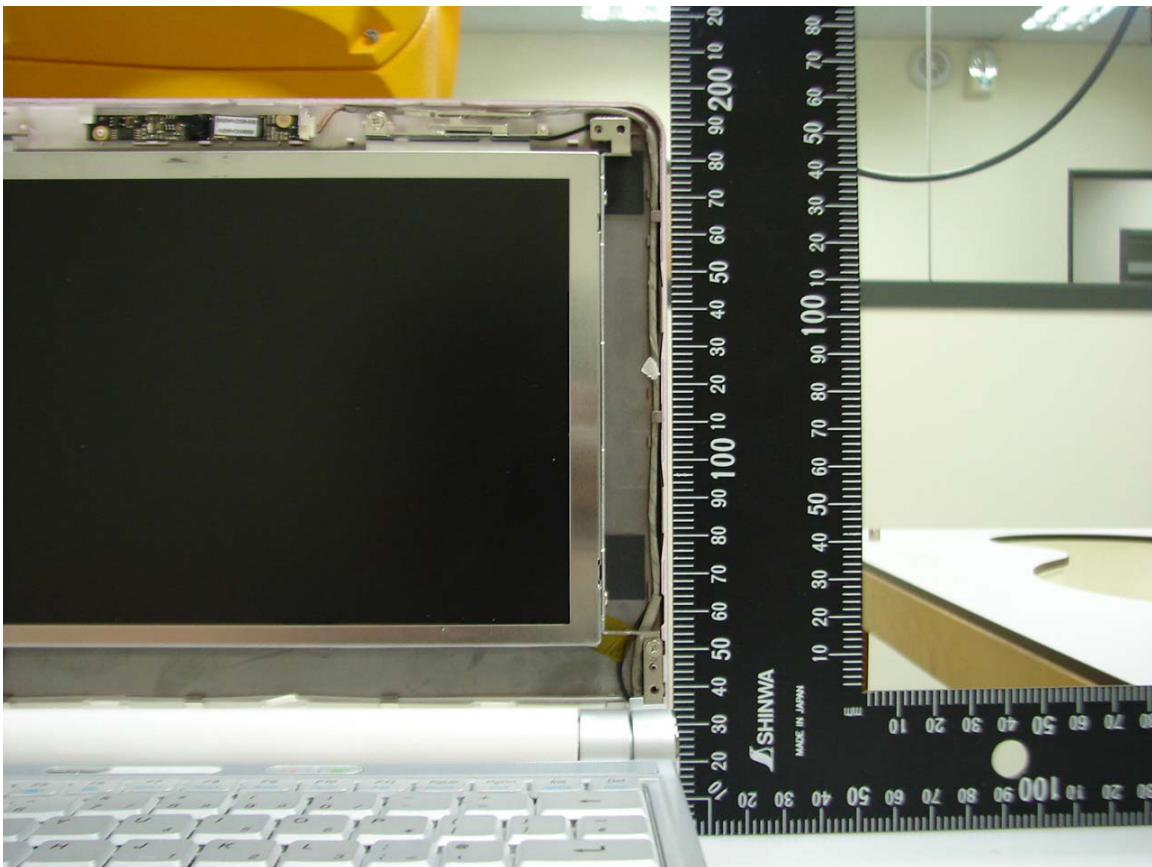


**8.9" LCD antenna distance(19cm)**

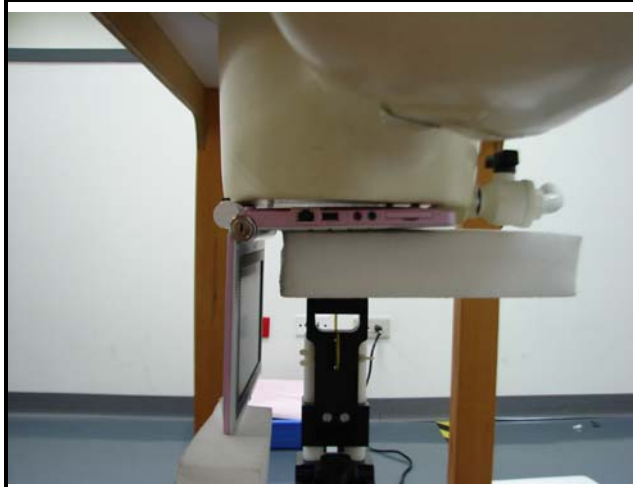


**10" LCD antenna distance(19cm)**



#### 9.4 SAR MEASUREMENTS RESULTS

##### Body position Bottom Flat Touched mode



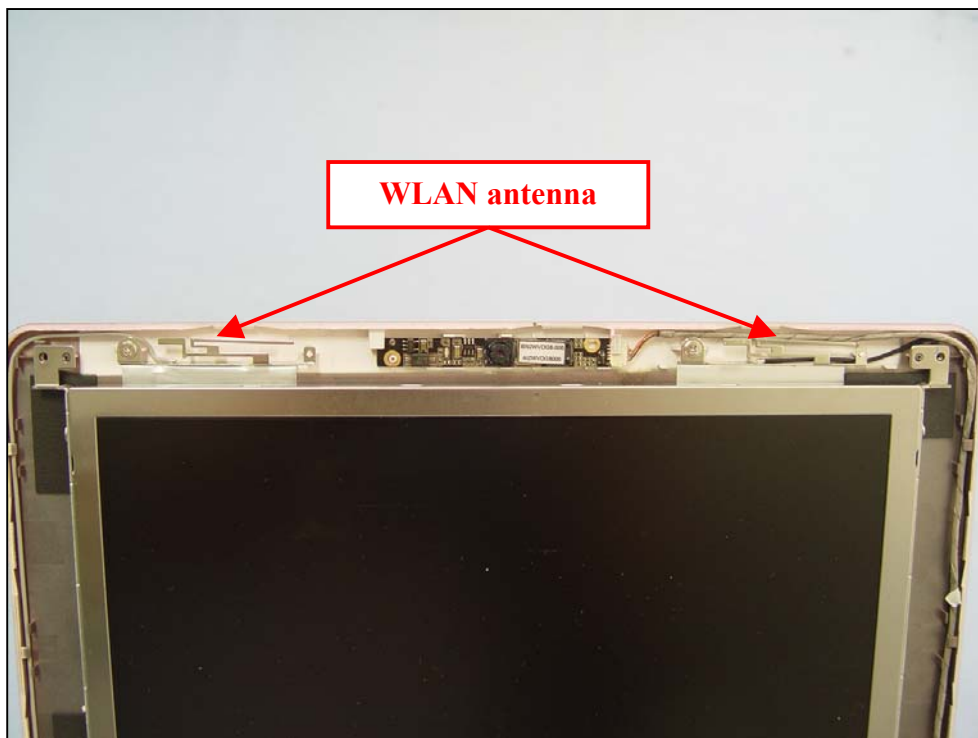
**8.9" Bottom flat Touched**



**10" Bottom flat Touched**

### 10. EUT PHOTOS

#### 8.9" LCD



10" LCD

